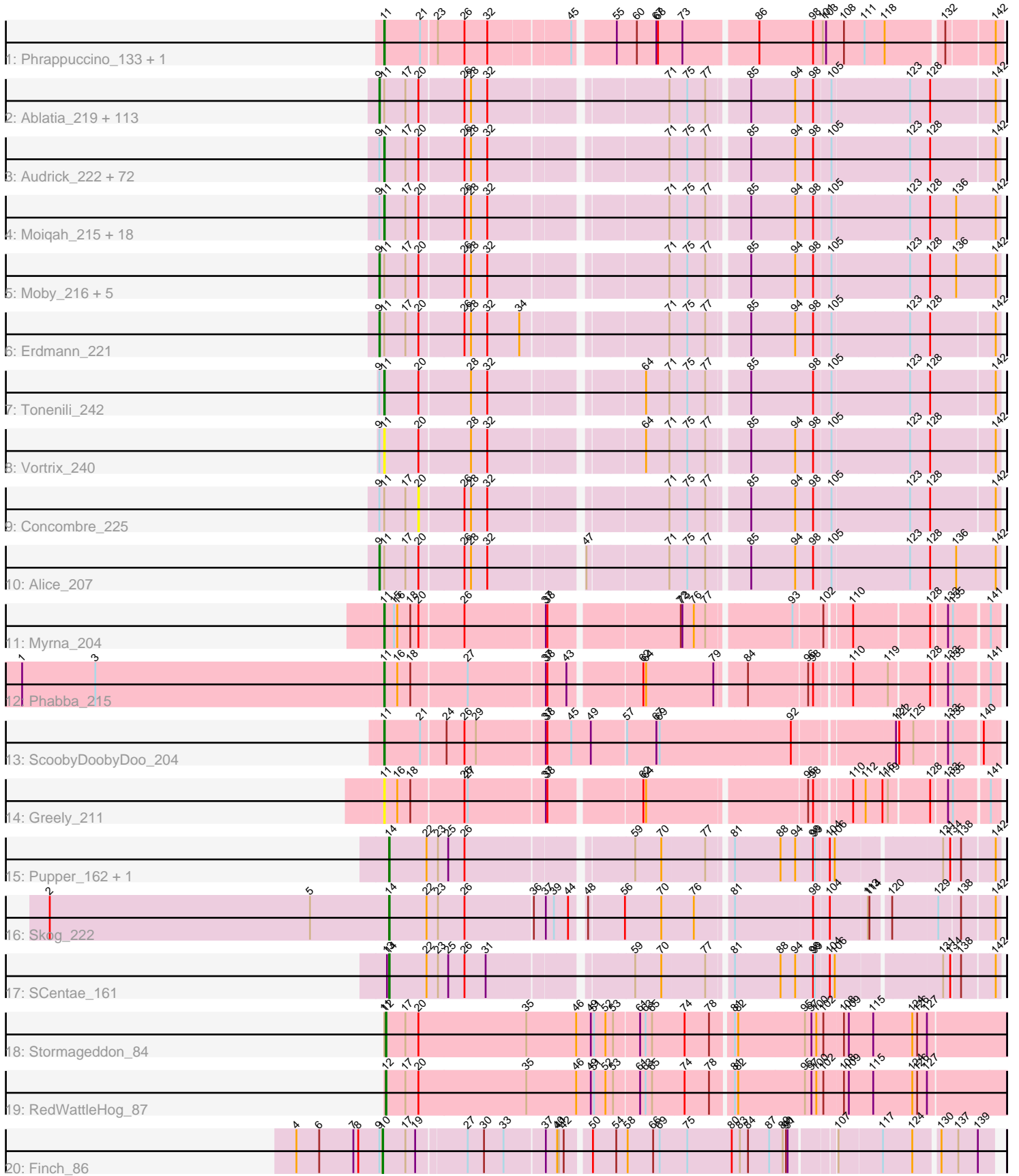


# Pham 294413



Note: Tracks are now grouped by subcluster and scaled. Switching in subcluster is indicated by changes in track color. Track scale is now set by default to display the region 30 bp upstream of start 1 to 30 bp downstream of the last possible start. If this default region is judged to be packed too tightly with annotated starts, the track will be further scaled to only show that region of the ORF with annotated starts. This action will be indicated by adding "Zoomed" to the title. For starts, yellow indicates the location of called starts comprised solely of Glimmer/GeneMark auto-annotations, green indicates the location of called starts with at least 1 manual gene annotation.

## Pham 294413 Report

This analysis was run 04/18/26 on database version 643.

Pham number 294413 has 230 members, 38 are drafts.

Phages represented in each track:

- Track 1 : Phrappuccino\_133, Settecandela\_133
- Track 2 : Ablatia\_219, Gabriel\_223, LRRHood\_213, Drazdys\_218, SrishMeg2525\_217, Loanshark\_217, Ghost\_220, Nidhogg\_221, Nappy\_221, JPickles\_216, Bipolarisk\_218, Iota\_215, ValleyTerrace\_221, BananaFence\_217, Catera\_212, Jezreel\_217, ChaylaJr\_218, ErnieJ\_213, Delylah\_222, Spud\_214, BadAgartude\_214, CindyLou\_221, Ewok\_219, Pivoine\_221, GlutenPhree\_221, Gamgam\_221, Patter\_221, Kboogie\_224, Roots515\_222, Blackdragon\_215, QBert\_212, Megamind\_217, DirtMonster\_213, Mangeria\_221, Yassified\_217, Gizmo\_226, Burrough\_222, Melpomini\_215, Delilah\_218, EasyJones\_223, Phlegm\_224, Pinkcreek\_204, Capablanca\_225, ZygoTaiga\_217, LolaVinca\_218, Latch\_220, McGee\_219, Maby2021\_220, Amataga\_221, Rizal\_212, Jedediah\_220, ChickenPhender\_216, Shnickers\_218, Cane17\_211, Cali\_213, RoMag\_215, Pier\_221, StephanieG\_216, YemiJoy2021\_221, TinyTim\_218, Ronan\_216, Phusco\_218, SmallFry\_220, Atlantean\_220, Specks\_224, Basquiat\_217, Bread\_215, Shrimp\_222, Ngannou\_217, Rahel\_221, Zeenon\_222, Trinitium\_216, MikeLiesIn\_222, Sauce\_216, Naija\_221, Blubba\_209, JulietS\_211, Asterius\_222, FrayBell\_223, Blackbrain\_217, Bxz1\_210, Teardrop\_217, Duckfeet\_214, Lethe\_220, Tortoise16\_218, Jemmno\_219, Substance289\_217, Janiyra\_223, Turret\_213, LordLeafolot\_221, LifeSavor\_219, PurduePete\_220, Ading\_221, Wally\_218, Zalkecks\_219, Tyke\_218, Pio\_228, Adlitam\_219, Norm\_220, StubbySaigey\_225, Yucca\_220, BobaPhatt\_212, InigoMontoya\_223, Domi\_214, NedWong\_219, Darko\_219, Matsumoto\_218, LinStu\_219, Daffodil\_225, Shelob\_221, FudgeTart\_215, ShiaLabeouf\_217, NoodleTree\_226, Littleton\_223
- Track 3 : Audrick\_222, Essence\_217, I3\_230, SVoro\_216, Naval22\_225, DTDevon\_222, SilverDipper\_224, Colt\_211, CharlieB\_214, Grasshills\_228, Koguma\_219, OrediggerDelux\_216, ScottMcG\_214, Dietrick\_209, Rocha\_217, BeanWater\_212, Halldule\_213, Breeniome\_219, Bigswole\_225, Issimir\_213, PharkleMinkus\_222, Quasimodo\_222, Spec\_215, Izajani\_218, Momo\_221, Fixie\_220, Grungle\_204, Lukilu\_211, ArcherS7\_220, Willis\_221, Derek\_217, Astraea\_214, Fludd\_220, Jaygup\_216, ET08\_208, Napoleon13\_217, YoungMoneyMata\_219, DrPhinkDaddy\_217, Pleione\_224, Chargie21\_217, Demodog\_226, Chomp\_220, Bowman\_218, ParkTD\_219, Bangla1971\_220, Phox\_221, Primadonna\_215, Ava3\_219, Morizzled23\_217, Salacia\_220, Dandelion\_228, EmmaElysia\_224, EggyFarm\_229, Lee7\_220, Belieber\_213, Babyland\_223, Mikro\_216, NuevoMundo\_223, Guwapp\_215, Dessert\_218, IkeLoa\_212, Labradorite\_218, Kamryn\_219, JigglyPuff\_227, Fongie\_221, Bezza\_209, InterFolia\_223, Cactojaque\_215, Tainan\_221, FoxtrotP1\_218,

LookingGlass\_219, Pupusa\_224, BigCity\_229

- Track 4 : Moiqah\_215, Sprinklers\_218, Khaleesi\_219, Caravan\_211, Stubby\_204, Jessibeth14\_220, Cleatunium\_213, Sebata\_221, BackyardAgain\_216, JustHall\_214, Shaqnato\_211, Lunareta\_218, Bonray\_222, Flabslab\_215, MoMoMixon\_218, HyRo\_208, Montpel\_218, McWolfish\_217, EmToTheThree\_220
- Track 5 : Moby\_216, Maturis\_217, JayJay\_222, Rabinovish\_213, Shifa\_197, DeejaClivia\_208
- Track 6 : Erdmann\_221
- Track 7 : Tonenili\_242
- Track 8 : Vortrix\_240
- Track 9 : Concombres\_225
- Track 10 : Alice\_207
- Track 11 : Myrna\_204
- Track 12 : Phabba\_215
- Track 13 : ScoobyDoobyDoo\_204
- Track 14 : Greely\_211
- Track 15 : Pupper\_162, CherryTomatoes\_163
- Track 16 : Skog\_222
- Track 17 : SCentae\_161
- Track 18 : Stormageddon\_84
- Track 19 : RedWattleHog\_87
- Track 20 : Finch\_86

### ***Summary of Final Annotations (See graph section above for start numbers):***

The start number called the most often in the published annotations is 9, it was called in 114 of the 192 non-draft genes in the pham.

Genes that call this "Most Annotated" start:

- Ablatia\_219, Ading\_221, Adlitam\_219, Alice\_207, Amataga\_221, Asterius\_222, Atlantean\_220, BadAgartude\_214, BananaFence\_217, Basquiat\_217, Bipolarisk\_218, Blackbrain\_217, Blackdragon\_215, Blubba\_209, BobaPhatt\_212, Bread\_215, Burrough\_222, Bxz1\_210, Cali\_213, Cane17\_211, Capablanca\_225, Catera\_212, ChaylaJr\_218, ChickenPhender\_216, CindyLou\_221, Daffodil\_225, Darko\_219, DeejaClivia\_208, Delilah\_218, Delylah\_222, DirtMonster\_213, Domi\_214, Drazdys\_218, Duckfeet\_214, EasyJones\_223, Erdmann\_221, ErnieJ\_213, Ewok\_219, FrayBell\_223, FudgeTart\_215, Gabriel\_223, Gangam\_221, Ghost\_220, Gizmo\_226, GlutenPhree\_221, InigoMontoya\_223, Iota\_215, JPickles\_216, Janiyra\_223, JayJay\_222, Jedediah\_220, Jemmno\_219, Jezreel\_217, JulietS\_211, Kboogie\_224, LRRHood\_213, Latch\_220, Lethe\_220, LifeSavor\_219, LinStu\_219, Littleton\_223, Loanshark\_217, LolaVinca\_218, LordLeafolot\_221, Maby2021\_220, Mangeria\_221, Matsumoto\_218, Maturis\_217, McGee\_219, Megamind\_217, Melpomini\_215, MikeLiesIn\_222, Moby\_216, Naija\_221, Nappy\_221, NedWong\_219, Ngannou\_217, Nidhogg\_221, NoodleTree\_226, Norm\_220, Patter\_221, Phlegm\_224, Phusco\_218, Pier\_221, Pinkcreek\_204, Pio\_228, Pivoine\_221, PurduePete\_220, QBert\_212, Rabinovish\_213, Rahel\_221, Rizal\_212, RoMag\_215, Ronan\_216, Roots515\_222, Sauce\_216, Shelob\_221, ShiaLabeouf\_217, Shifa\_197, Shnickers\_218, Shrimp\_222, SmallFry\_220, Specks\_224, Spud\_214, SrishMeg2525\_217, StephanieG\_216, StubbySaigey\_225, Substance289\_217, Teardrop\_217, TinyTim\_218, Tortoise16\_218, Trinitium\_216, Turret\_213, Tyke\_218,

ValleyTerrace\_221, Wally\_218, Yassified\_217, YemiJoy2021\_221, Yucca\_220, Zalkecks\_219, Zeenon\_222, ZygoTaiga\_217,

Genes that have the "Most Annotated" start but do not call it:

- ArcherS7\_220, Astraea\_214, Audrick\_222, Ava3\_219, Babyland\_223, BackyardAgain\_216, Bangla1971\_220, BeanWater\_212, Belieber\_213, Bezza\_209, BigCity\_229, Bigswole\_225, Bonray\_222, Bowman\_218, Breeniome\_219, Cactojaque\_215, Caravan\_211, Chargie21\_217, CharlieB\_214, Chomp\_220, Cleatunium\_213, Colt\_211, Concombre\_225, DTDevon\_222, Dandelion\_228, Demodog\_226, Derek\_217, Dessert\_218, Dietrick\_209, DrPhinkDaddy\_217, ET08\_208, EggyFarm\_229, EmToTheThree\_220, EmmaElysia\_224, Essence\_217, Finch\_86, Fixie\_220, Flabslab\_215, Fludd\_220, Fongie\_221, FoxtrotP1\_218, Grasshills\_228, Grungle\_204, Guwapp\_215, Halldule\_213, HyRo\_208, I3\_230, IkeLoa\_212, InterFolia\_223, Issimir\_213, Izajani\_218, Jaygup\_216, Jessibeth14\_220, JigglyPuff\_227, JustHall\_214, Kamryn\_219, Khaleesi\_219, Koguma\_219, Labradorite\_218, Lee7\_220, LookingGlass\_219, Lukilu\_211, Lunareta\_218, McWolfish\_217, Mikro\_216, MoMoMixon\_218, Moiqah\_215, Momo\_221, Montpel\_218, Morizzled23\_217, Napoleon13\_217, Naval22\_225, NuevoMundo\_223, OrediggerDelux\_216, ParkTD\_219, PharkleMinkus\_222, Phox\_221, Pleione\_224, Primadonna\_215, Pupusa\_224, Quasimodo\_222, Rocha\_217, SVoro\_216, Salacia\_220, ScottMcG\_214, Sebata\_221, Shaqnato\_211, SilverDipper\_224, Spec\_215, Sprinklers\_218, Stubby\_204, Tainan\_221, Tonenili\_242, Vortex\_240, Willis\_221, YoungMoneyMata\_219,

Genes that do not have the "Most Annotated" start:

- CherryTomatoes\_163, Greely\_211, Myrna\_204, Phabba\_215, Phrappuccino\_133, Pupper\_162, RedWattleHog\_87, SCentae\_161, ScoobyDoobyDoo\_204, Settecandela\_133, Skog\_222, Stormageddon\_84,

### Summary by start number:

Start 9:

- Found in 218 of 230 ( 94.8% ) of genes in pham
- Manual Annotations of this start: 114 of 192
- Called 56.0% of time when present
- Phage (with cluster) where this start called: Ablatia\_219 (C1), Ading\_221 (C1), Adlitam\_219 (C1), Alice\_207 (C1), Amataga\_221 (C1), Asterius\_222 (C1), Atlantean\_220 (C1), BadAgartude\_214 (C1), BananaFence\_217 (C1), Basquiat\_217 (C1), Bipolarisk\_218 (C1), Blackbrain\_217 (C1), Blackdragon\_215 (C1), Blubba\_209 (C1), BobaPhatt\_212 (C1), Bread\_215 (C1), Burrough\_222 (C1), Bxz1\_210 (C1), Cali\_213 (C1), Cane17\_211 (C1), Capablanca\_225 (C1), Catera\_212 (C1), ChaylaJr\_218 (C1), ChickenPhender\_216 (C1), CindyLou\_221 (C1), Daffodil\_225 (C1), Darko\_219 (C1), DeejaClivia\_208 (C1), Delilah\_218 (C1), Delylah\_222 (C1), DirtMonster\_213 (C1), Domi\_214 (C1), Drazdys\_218 (C1), Duckfeet\_214 (C1), EasyJones\_223 (C1), Erdmann\_221 (C1), ErnieJ\_213 (C1), Ewok\_219 (C1), FrayBell\_223 (C1), FudgeTart\_215 (C1), Gabriel\_223 (C1), Gamgam\_221 (C1), Ghost\_220 (C1), Gizmo\_226 (C1), GlutenPhree\_221 (C1), InigoMontoya\_223 (C1), Iota\_215 (C1), JPickles\_216 (C1), Janiyra\_223 (C1), JayJay\_222 (C1), Jediah\_220 (C1), Jemmno\_219 (C1), Jezreel\_217 (C1), JulietS\_211 (C1), Kboogie\_224 (C1), LRRHood\_213 (C1), Latch\_220 (C1), Lethe\_220 (C1), LifeSavor\_219 (C1), LinStu\_219 (C1), Littleton\_223 (C1), Loanshark\_217 (C1), LolaVinca\_218 (C1), LordLeafolot\_221 (C1), Maby2021\_220 (C1), Mangeria\_221 (C1), Matsumoto\_218 (C1), Maturis\_217 (C1), McGee\_219 (C1), Megamind\_217 (C1), Melpomini\_215 (C1),

MikeLiesIn\_222 (C1), Moby\_216 (C1), Naija\_221 (C1), Nappy\_221 (C1), NedWong\_219 (C1), Ngannou\_217 (C1), Nidhogg\_221 (C1), NoodleTree\_226 (C1), Norm\_220 (C1), Patter\_221 (C1), Phlegm\_224 (C1), Phusco\_218 (C1), Pier\_221 (C1), Pinkcreek\_204 (C1), Pio\_228 (C1), Pivoine\_221 (C1), PurduePete\_220 (C1), QBert\_212 (C1), Rabinovish\_213 (C1), Rahel\_221 (C1), Rizal\_212 (C1), RoMag\_215 (C1), Ronan\_216 (C1), Roots515\_222 (C1), Sauce\_216 (C1), Shelob\_221 (C1), ShiaLabeouf\_217 (C1), Shifa\_197 (C1), Shnickers\_218 (C1), Shrimp\_222 (C1), SmallFry\_220 (C1), Specks\_224 (C1), Spud\_214 (C1), SrishMeg2525\_217 (C1), StephanieG\_216 (C1), StubbySaigey\_225 (C1), Substance289\_217 (C1), Teardrop\_217 (C1), TinyTim\_218 (C1), Tortoise16\_218 (C1), Trinitium\_216 (C1), Turret\_213 (C1), Tyke\_218 (C1), ValleyTerrace\_221 (C1), Wally\_218 (C1), Yassified\_217 (C1), YemiJoy2021\_221 (C1), Yucca\_220 (C1), Zalkecks\_219 (C1), Zeenon\_222 (C1), ZygoTaiga\_217 (C1),

Start 10:

- Found in 1 of 230 ( 0.4% ) of genes in pham
- Manual Annotations of this start: 1 of 192
- Called 100.0% of time when present
- Phage (with cluster) where this start called: Finch\_86 (singleton),

Start 11:

- Found in 224 of 230 ( 97.4% ) of genes in pham
- Manual Annotations of this start: 71 of 192
- Called 44.6% of time when present
- Phage (with cluster) where this start called: ArcherS7\_220 (C1), Astraea\_214 (C1), Audrick\_222 (C1), Ava3\_219 (C1), Babyland\_223 (C1), BackyardAgain\_216 (C1), Bangla1971\_220 (C1), BeanWater\_212 (C1), Belieber\_213 (C1), Bezza\_209 (C1), BigCity\_229 (C1), Bigswole\_225 (C1), Bonray\_222 (C1), Bowman\_218 (C1), Breeniome\_219 (C1), Cactojaque\_215 (C1), Caravan\_211 (C1), Chargie21\_217 (C1), CharlieB\_214 (C1), Chomp\_220 (C1), Cleatunium\_213 (C1), Colt\_211 (C1), DTDevon\_222 (C1), Dandelion\_228 (C1), Demodog\_226 (C1), Derek\_217 (C1), Dessert\_218 (C1), Dietrick\_209 (C1), DrPhinkDaddy\_217 (C1), ET08\_208 (C1), EggyFarm\_229 (C1), EmToTheThree\_220 (C1), EmmaElysia\_224 (C1), Essence\_217 (C1), Fixie\_220 (C1), Flabslab\_215 (C1), Fludd\_220 (C1), Fongie\_221 (C1), FoxtrotP1\_218 (C1), Grasshills\_228 (C1), Greely\_211 (C2), Grungle\_204 (C1), Guwapp\_215 (C1), Halldule\_213 (C1), HyRo\_208 (C1), I3\_230 (C1), IkeLoa\_212 (C1), InterFolia\_223 (C1), Issimir\_213 (C1), Izajani\_218 (C1), Jaygup\_216 (C1), Jessibeth14\_220 (C1), JigglyPuff\_227 (C1), JustHall\_214 (C1), Kamryn\_219 (C1), Khaleesi\_219 (C1), Koguma\_219 (C1), Labradorite\_218 (C1), Lee7\_220 (C1), LookingGlass\_219 (C1), Lukilu\_211 (C1), Lunareta\_218 (C1), McWolfish\_217 (C1), Mikro\_216 (C1), MoMoMixon\_218 (C1), Moiqah\_215 (C1), Momo\_221 (C1), Montpel\_218 (C1), Morizzled23\_217 (C1), Myrna\_204 (C2), Napoleon13\_217 (C1), Naval22\_225 (C1), NuevoMundo\_223 (C1), OrediggerDelux\_216 (C1), ParkTD\_219 (C1), Phabba\_215 (C2), PharkleMinkus\_222 (C1), Phox\_221 (C1), Phrappuccino\_133 (AA), Pleione\_224 (C1), Primadonna\_215 (C1), Pupusa\_224 (C1), Quasimodo\_222 (C1), Rocha\_217 (C1), SVoro\_216 (C1), Salacia\_220 (C1), ScoobyDoobyDoo\_204 (C2), ScottMcG\_214 (C1), Sebata\_221 (C1), Settecandela\_133 (AA), Shaqnato\_211 (C1), SilverDipper\_224 (C1), Spec\_215 (C1), Sprinklers\_218 (C1), Stubby\_204 (C1), Tainan\_221 (C1), Tonenili\_242 (C1), Vortrix\_240 (C1), Willis\_221 (C1), YoungMoneyMata\_219 (C1),

Start 12:

- Found in 2 of 230 ( 0.9% ) of genes in pham

- Manual Annotations of this start: 2 of 192
- Called 100.0% of time when present
- Phage (with cluster) where this start called: RedWattleHog\_87 (DX), Stormageddon\_84 (DX),

Start 14:

- Found in 4 of 230 ( 1.7% ) of genes in pham
- Manual Annotations of this start: 4 of 192
- Called 100.0% of time when present
- Phage (with cluster) where this start called: CherryTomatoes\_163 (DO), Pupper\_162 (DO), SCentae\_161 (DO), Skog\_222 (DO),

Start 20:

- Found in 220 of 230 ( 95.7% ) of genes in pham
- No Manual Annotations of this start.
- Called 0.5% of time when present
- Phage (with cluster) where this start called: Concombre\_225 (C1),

### **Summary by clusters:**

There are 6 clusters represented in this pham: AA, DO, singleton, DX, C2, C1,

Info for manual annotations of cluster AA:

- Start number 11 was manually annotated 2 times for cluster AA.

Info for manual annotations of cluster C1:

- Start number 9 was manually annotated 114 times for cluster C1.
- Start number 11 was manually annotated 66 times for cluster C1.

Info for manual annotations of cluster C2:

- Start number 11 was manually annotated 3 times for cluster C2.

Info for manual annotations of cluster DO:

- Start number 14 was manually annotated 4 times for cluster DO.

Info for manual annotations of cluster DX:

- Start number 12 was manually annotated 2 times for cluster DX.

### **Gene Information:**

Gene: Ablatia\_219 Start: 122696, Stop: 123721, Start Num: 9

Candidate Starts for Ablatia\_219:

(Start: 9 @122696 has 114 MA's), (Start: 11 @122705 has 71 MA's), (17, 122744), (20, 122765), (26, 122840), (28, 122852), (32, 122882), (71, 123164), (75, 123194), (77, 123227), (85, 123290), (94, 123368), (98, 123401), (105, 123431), (123, 123566), (128, 123602), (142, 123716),

Gene: Ading\_221 Start: 124316, Stop: 125341, Start Num: 9

Candidate Starts for Ading\_221:

(Start: 9 @124316 has 114 MA's), (Start: 11 @124325 has 71 MA's), (17, 124364), (20, 124385), (26, 124460), (28, 124472), (32, 124502), (71, 124784), (75, 124814), (77, 124847), (85, 124910), (94, 124988), (98, 125021), (105, 125051), (123, 125186), (128, 125222), (142, 125336),

Gene: Adlitam\_219 Start: 122920, Stop: 123945, Start Num: 9

Candidate Starts for Adlitam\_219:

(Start: 9 @122920 has 114 MA's), (Start: 11 @122929 has 71 MA's), (17, 122968), (20, 122989), (26, 123064), (28, 123076), (32, 123106), (71, 123388), (75, 123418), (77, 123451), (85, 123514), (94, 123592), (98, 123625), (105, 123655), (123, 123790), (128, 123826), (142, 123940),

Gene: Alice\_207 Start: 121883, Stop: 122914, Start Num: 9

Candidate Starts for Alice\_207:

(Start: 9 @121883 has 114 MA's), (Start: 11 @121892 has 71 MA's), (17, 121931), (20, 121952), (26, 122027), (28, 122039), (32, 122069), (47, 122219), (71, 122351), (75, 122381), (77, 122414), (85, 122477), (94, 122555), (98, 122588), (105, 122618), (123, 122753), (128, 122789), (136, 122837), (142, 122909),

Gene: Amataga\_221 Start: 122732, Stop: 123757, Start Num: 9

Candidate Starts for Amataga\_221:

(Start: 9 @122732 has 114 MA's), (Start: 11 @122741 has 71 MA's), (17, 122780), (20, 122801), (26, 122876), (28, 122888), (32, 122918), (71, 123200), (75, 123230), (77, 123263), (85, 123326), (94, 123404), (98, 123437), (105, 123467), (123, 123602), (128, 123638), (142, 123752),

Gene: ArcherS7\_220 Start: 123783, Stop: 124799, Start Num: 11

Candidate Starts for ArcherS7\_220:

(Start: 9 @123774 has 114 MA's), (Start: 11 @123783 has 71 MA's), (17, 123822), (20, 123843), (26, 123918), (28, 123930), (32, 123960), (71, 124242), (75, 124272), (77, 124305), (85, 124368), (94, 124446), (98, 124479), (105, 124509), (123, 124644), (128, 124680), (142, 124794),

Gene: Asterius\_222 Start: 123141, Stop: 124166, Start Num: 9

Candidate Starts for Asterius\_222:

(Start: 9 @123141 has 114 MA's), (Start: 11 @123150 has 71 MA's), (17, 123189), (20, 123210), (26, 123285), (28, 123297), (32, 123327), (71, 123609), (75, 123639), (77, 123672), (85, 123735), (94, 123813), (98, 123846), (105, 123876), (123, 124011), (128, 124047), (142, 124161),

Gene: Astraea\_214 Start: 122345, Stop: 123361, Start Num: 11

Candidate Starts for Astraea\_214:

(Start: 9 @122336 has 114 MA's), (Start: 11 @122345 has 71 MA's), (17, 122384), (20, 122405), (26, 122480), (28, 122492), (32, 122522), (71, 122804), (75, 122834), (77, 122867), (85, 122930), (94, 123008), (98, 123041), (105, 123071), (123, 123206), (128, 123242), (142, 123356),

Gene: Atlantean\_220 Start: 122732, Stop: 123757, Start Num: 9

Candidate Starts for Atlantean\_220:

(Start: 9 @122732 has 114 MA's), (Start: 11 @122741 has 71 MA's), (17, 122780), (20, 122801), (26, 122876), (28, 122888), (32, 122918), (71, 123200), (75, 123230), (77, 123263), (85, 123326), (94, 123404), (98, 123437), (105, 123467), (123, 123602), (128, 123638), (142, 123752),

Gene: Audrick\_222 Start: 122631, Stop: 123647, Start Num: 11

Candidate Starts for Audrick\_222:

(Start: 9 @122622 has 114 MA's), (Start: 11 @122631 has 71 MA's), (17, 122670), (20, 122691), (26, 122766), (28, 122778), (32, 122808), (71, 123090), (75, 123120), (77, 123153), (85, 123216), (94, 123294), (98, 123327), (105, 123357), (123, 123492), (128, 123528), (142, 123642),

Gene: Ava3\_219 Start: 123163, Stop: 124179, Start Num: 11

Candidate Starts for Ava3\_219:

(Start: 9 @123154 has 114 MA's), (Start: 11 @123163 has 71 MA's), (17, 123202), (20, 123223), (26, 123298), (28, 123310), (32, 123340), (71, 123622), (75, 123652), (77, 123685), (85, 123748), (94, 123826), (98, 123859), (105, 123889), (123, 124024), (128, 124060), (142, 124174),

Gene: Babyland\_223 Start: 123518, Stop: 124534, Start Num: 11

Candidate Starts for Babyland\_223:

(Start: 9 @123509 has 114 MA's), (Start: 11 @123518 has 71 MA's), (17, 123557), (20, 123578), (26, 123653), (28, 123665), (32, 123695), (71, 123977), (75, 124007), (77, 124040), (85, 124103), (94, 124181), (98, 124214), (105, 124244), (123, 124379), (128, 124415), (142, 124529),

Gene: BackyardAgain\_216 Start: 120694, Stop: 121716, Start Num: 11

Candidate Starts for BackyardAgain\_216:

(Start: 9 @120685 has 114 MA's), (Start: 11 @120694 has 71 MA's), (17, 120733), (20, 120754), (26, 120829), (28, 120841), (32, 120871), (71, 121153), (75, 121183), (77, 121216), (85, 121279), (94, 121357), (98, 121390), (105, 121420), (123, 121555), (128, 121591), (136, 121639), (142, 121711),

Gene: BadAgartude\_214 Start: 122822, Stop: 123847, Start Num: 9

Candidate Starts for BadAgartude\_214:

(Start: 9 @122822 has 114 MA's), (Start: 11 @122831 has 71 MA's), (17, 122870), (20, 122891), (26, 122966), (28, 122978), (32, 123008), (71, 123290), (75, 123320), (77, 123353), (85, 123416), (94, 123494), (98, 123527), (105, 123557), (123, 123692), (128, 123728), (142, 123842),

Gene: BananaFence\_217 Start: 122965, Stop: 123990, Start Num: 9

Candidate Starts for BananaFence\_217:

(Start: 9 @122965 has 114 MA's), (Start: 11 @122974 has 71 MA's), (17, 123013), (20, 123034), (26, 123109), (28, 123121), (32, 123151), (71, 123433), (75, 123463), (77, 123496), (85, 123559), (94, 123637), (98, 123670), (105, 123700), (123, 123835), (128, 123871), (142, 123985),

Gene: Bangla1971\_220 Start: 122747, Stop: 123763, Start Num: 11

Candidate Starts for Bangla1971\_220:

(Start: 9 @122738 has 114 MA's), (Start: 11 @122747 has 71 MA's), (17, 122786), (20, 122807), (26, 122882), (28, 122894), (32, 122924), (71, 123206), (75, 123236), (77, 123269), (85, 123332), (94, 123410), (98, 123443), (105, 123473), (123, 123608), (128, 123644), (142, 123758),

Gene: Basquiat\_217 Start: 121251, Stop: 122276, Start Num: 9

Candidate Starts for Basquiat\_217:

(Start: 9 @121251 has 114 MA's), (Start: 11 @121260 has 71 MA's), (17, 121299), (20, 121320), (26, 121395), (28, 121407), (32, 121437), (71, 121719), (75, 121749), (77, 121782), (85, 121845), (94, 121923), (98, 121956), (105, 121986), (123, 122121), (128, 122157), (142, 122271),

Gene: BeanWater\_212 Start: 121774, Stop: 122790, Start Num: 11

Candidate Starts for BeanWater\_212:

(Start: 9 @121765 has 114 MA's), (Start: 11 @121774 has 71 MA's), (17, 121813), (20, 121834), (26, 121909), (28, 121921), (32, 121951), (71, 122233), (75, 122263), (77, 122296), (85, 122359), (94, 122437), (98, 122470), (105, 122500), (123, 122635), (128, 122671), (142, 122785),

Gene: Belieber\_213 Start: 120574, Stop: 121590, Start Num: 11

Candidate Starts for Belieber\_213:

(Start: 9 @120565 has 114 MA's), (Start: 11 @120574 has 71 MA's), (17, 120613), (20, 120634), (26, 120709), (28, 120721), (32, 120751), (71, 121033), (75, 121063), (77, 121096), (85, 121159), (94, 121237), (98, 121270), (105, 121300), (123, 121435), (128, 121471), (142, 121585),

Gene: Bezza\_209 Start: 122286, Stop: 123302, Start Num: 11

Candidate Starts for Bezza\_209:

(Start: 9 @122277 has 114 MA's), (Start: 11 @122286 has 71 MA's), (17, 122325), (20, 122346), (26, 122421), (28, 122433), (32, 122463), (71, 122745), (75, 122775), (77, 122808), (85, 122871), (94, 122949), (98, 122982), (105, 123012), (123, 123147), (128, 123183), (142, 123297),

Gene: BigCity\_229 Start: 125345, Stop: 126361, Start Num: 11

Candidate Starts for BigCity\_229:

(Start: 9 @125336 has 114 MA's), (Start: 11 @125345 has 71 MA's), (17, 125384), (20, 125405), (26, 125480), (28, 125492), (32, 125522), (71, 125804), (75, 125834), (77, 125867), (85, 125930), (94, 126008), (98, 126041), (105, 126071), (123, 126206), (128, 126242), (142, 126356),

Gene: Bigswole\_225 Start: 125199, Stop: 126215, Start Num: 11

Candidate Starts for Bigswole\_225:

(Start: 9 @125190 has 114 MA's), (Start: 11 @125199 has 71 MA's), (17, 125238), (20, 125259), (26, 125334), (28, 125346), (32, 125376), (71, 125658), (75, 125688), (77, 125721), (85, 125784), (94, 125862), (98, 125895), (105, 125925), (123, 126060), (128, 126096), (142, 126210),

Gene: Bipolarisk\_218 Start: 123423, Stop: 124448, Start Num: 9

Candidate Starts for Bipolarisk\_218:

(Start: 9 @123423 has 114 MA's), (Start: 11 @123432 has 71 MA's), (17, 123471), (20, 123492), (26, 123567), (28, 123579), (32, 123609), (71, 123891), (75, 123921), (77, 123954), (85, 124017), (94, 124095), (98, 124128), (105, 124158), (123, 124293), (128, 124329), (142, 124443),

Gene: Blackbrain\_217 Start: 122324, Stop: 123349, Start Num: 9

Candidate Starts for Blackbrain\_217:

(Start: 9 @122324 has 114 MA's), (Start: 11 @122333 has 71 MA's), (17, 122372), (20, 122393), (26, 122468), (28, 122480), (32, 122510), (71, 122792), (75, 122822), (77, 122855), (85, 122918), (94, 122996), (98, 123029), (105, 123059), (123, 123194), (128, 123230), (142, 123344),

Gene: Blackdragon\_215 Start: 123056, Stop: 124081, Start Num: 9

Candidate Starts for Blackdragon\_215:

(Start: 9 @123056 has 114 MA's), (Start: 11 @123065 has 71 MA's), (17, 123104), (20, 123125), (26, 123200), (28, 123212), (32, 123242), (71, 123524), (75, 123554), (77, 123587), (85, 123650), (94, 123728), (98, 123761), (105, 123791), (123, 123926), (128, 123962), (142, 124076),

Gene: Blubba\_209 Start: 126405, Stop: 127430, Start Num: 9

Candidate Starts for Blubba\_209:

(Start: 9 @126405 has 114 MA's), (Start: 11 @126414 has 71 MA's), (17, 126453), (20, 126474), (26, 126549), (28, 126561), (32, 126591), (71, 126873), (75, 126903), (77, 126936), (85, 126999), (94, 127077), (98, 127110), (105, 127140), (123, 127275), (128, 127311), (142, 127425),

Gene: BobaPhatt\_212 Start: 121443, Stop: 122468, Start Num: 9

Candidate Starts for BobaPhatt\_212:

(Start: 9 @121443 has 114 MA's), (Start: 11 @121452 has 71 MA's), (17, 121491), (20, 121512), (26, 121587), (28, 121599), (32, 121629), (71, 121911), (75, 121941), (77, 121974), (85, 122037), (94, 122115), (98, 122148), (105, 122178), (123, 122313), (128, 122349), (142, 122463),

Gene: Bonray\_222 Start: 124834, Stop: 125856, Start Num: 11

Candidate Starts for Bonray\_222:

(Start: 9 @124825 has 114 MA's), (Start: 11 @124834 has 71 MA's), (17, 124873), (20, 124894), (26, 124969), (28, 124981), (32, 125011), (71, 125293), (75, 125323), (77, 125356), (85, 125419), (94, 125497), (98, 125530), (105, 125560), (123, 125695), (128, 125731), (136, 125779), (142, 125851),

Gene: Bowman\_218 Start: 123952, Stop: 124968, Start Num: 11

Candidate Starts for Bowman\_218:

(Start: 9 @123943 has 114 MA's), (Start: 11 @123952 has 71 MA's), (17, 123991), (20, 124012), (26, 124087), (28, 124099), (32, 124129), (71, 124411), (75, 124441), (77, 124474), (85, 124537), (94, 124615), (98, 124648), (105, 124678), (123, 124813), (128, 124849), (142, 124963),

Gene: Bread\_215 Start: 122835, Stop: 123860, Start Num: 9

Candidate Starts for Bread\_215:

(Start: 9 @122835 has 114 MA's), (Start: 11 @122844 has 71 MA's), (17, 122883), (20, 122904), (26, 122979), (28, 122991), (32, 123021), (71, 123303), (75, 123333), (77, 123366), (85, 123429), (94, 123507), (98, 123540), (105, 123570), (123, 123705), (128, 123741), (142, 123855),

Gene: Breeniome\_219 Start: 122298, Stop: 123314, Start Num: 11

Candidate Starts for Breeniome\_219:

(Start: 9 @122289 has 114 MA's), (Start: 11 @122298 has 71 MA's), (17, 122337), (20, 122358), (26, 122433), (28, 122445), (32, 122475), (71, 122757), (75, 122787), (77, 122820), (85, 122883), (94, 122961), (98, 122994), (105, 123024), (123, 123159), (128, 123195), (142, 123309),

Gene: Burrough\_222 Start: 124605, Stop: 125630, Start Num: 9

Candidate Starts for Burrough\_222:

(Start: 9 @124605 has 114 MA's), (Start: 11 @124614 has 71 MA's), (17, 124653), (20, 124674), (26, 124749), (28, 124761), (32, 124791), (71, 125073), (75, 125103), (77, 125136), (85, 125199), (94, 125277), (98, 125310), (105, 125340), (123, 125475), (128, 125511), (142, 125625),

Gene: Bxz1\_210 Start: 124811, Stop: 125836, Start Num: 9

Candidate Starts for Bxz1\_210:

(Start: 9 @124811 has 114 MA's), (Start: 11 @124820 has 71 MA's), (17, 124859), (20, 124880), (26, 124955), (28, 124967), (32, 124997), (71, 125279), (75, 125309), (77, 125342), (85, 125405), (94, 125483), (98, 125516), (105, 125546), (123, 125681), (128, 125717), (142, 125831),

Gene: Cactojaque\_215 Start: 121280, Stop: 122296, Start Num: 11

Candidate Starts for Cactojaque\_215:

(Start: 9 @121271 has 114 MA's), (Start: 11 @121280 has 71 MA's), (17, 121319), (20, 121340), (26, 121415), (28, 121427), (32, 121457), (71, 121739), (75, 121769), (77, 121802), (85, 121865), (94, 121943), (98, 121976), (105, 122006), (123, 122141), (128, 122177), (142, 122291),

Gene: Cali\_213 Start: 123206, Stop: 124231, Start Num: 9

Candidate Starts for Cali\_213:

(Start: 9 @123206 has 114 MA's), (Start: 11 @123215 has 71 MA's), (17, 123254), (20, 123275), (26, 123350), (28, 123362), (32, 123392), (71, 123674), (75, 123704), (77, 123737), (85, 123800), (94, 123878), (98, 123911), (105, 123941), (123, 124076), (128, 124112), (142, 124226),

Gene: Cane17\_211 Start: 126814, Stop: 127839, Start Num: 9

Candidate Starts for Cane17\_211:

(Start: 9 @126814 has 114 MA's), (Start: 11 @126823 has 71 MA's), (17, 126862), (20, 126883), (26, 126958), (28, 126970), (32, 127000), (71, 127282), (75, 127312), (77, 127345), (85, 127408), (94, 127486), (98, 127519), (105, 127549), (123, 127684), (128, 127720), (142, 127834),

Gene: Capablanca\_225 Start: 125420, Stop: 126445, Start Num: 9

Candidate Starts for Capablanca\_225:

(Start: 9 @125420 has 114 MA's), (Start: 11 @125429 has 71 MA's), (17, 125468), (20, 125489), (26, 125564), (28, 125576), (32, 125606), (71, 125888), (75, 125918), (77, 125951), (85, 126014), (94, 126092), (98, 126125), (105, 126155), (123, 126290), (128, 126326), (142, 126440),

Gene: Caravan\_211 Start: 123549, Stop: 124571, Start Num: 11

Candidate Starts for Caravan\_211:

(Start: 9 @123540 has 114 MA's), (Start: 11 @123549 has 71 MA's), (17, 123588), (20, 123609), (26, 123684), (28, 123696), (32, 123726), (71, 124008), (75, 124038), (77, 124071), (85, 124134), (94, 124212), (98, 124245), (105, 124275), (123, 124410), (128, 124446), (136, 124494), (142, 124566),

Gene: Catera\_212 Start: 121945, Stop: 122970, Start Num: 9

Candidate Starts for Catera\_212:

(Start: 9 @121945 has 114 MA's), (Start: 11 @121954 has 71 MA's), (17, 121993), (20, 122014), (26, 122089), (28, 122101), (32, 122131), (71, 122413), (75, 122443), (77, 122476), (85, 122539), (94, 122617), (98, 122650), (105, 122680), (123, 122815), (128, 122851), (142, 122965),

Gene: Chargie21\_217 Start: 121260, Stop: 122276, Start Num: 11

Candidate Starts for Chargie21\_217:

(Start: 9 @121251 has 114 MA's), (Start: 11 @121260 has 71 MA's), (17, 121299), (20, 121320), (26, 121395), (28, 121407), (32, 121437), (71, 121719), (75, 121749), (77, 121782), (85, 121845), (94, 121923), (98, 121956), (105, 121986), (123, 122121), (128, 122157), (142, 122271),

Gene: CharlieB\_214 Start: 122969, Stop: 123985, Start Num: 11

Candidate Starts for CharlieB\_214:

(Start: 9 @122960 has 114 MA's), (Start: 11 @122969 has 71 MA's), (17, 123008), (20, 123029), (26, 123104), (28, 123116), (32, 123146), (71, 123428), (75, 123458), (77, 123491), (85, 123554), (94, 123632), (98, 123665), (105, 123695), (123, 123830), (128, 123866), (142, 123980),

Gene: ChaylaJr\_218 Start: 121939, Stop: 122964, Start Num: 9

Candidate Starts for ChaylaJr\_218:

(Start: 9 @121939 has 114 MA's), (Start: 11 @121948 has 71 MA's), (17, 121987), (20, 122008), (26, 122083), (28, 122095), (32, 122125), (71, 122407), (75, 122437), (77, 122470), (85, 122533), (94, 122611), (98, 122644), (105, 122674), (123, 122809), (128, 122845), (142, 122959),

Gene: CherryTomatoes\_163 Start: 114662, Stop: 115654, Start Num: 14

Candidate Starts for CherryTomatoes\_163:

(Start: 14 @114662 has 4 MA's), (22, 114731), (23, 114746), (25, 114764), (26, 114794), (59, 115061), (70, 115106), (77, 115181), (81, 115217), (88, 115295), (94, 115322), (98, 115352), (99, 115355), (104, 115379), (106, 115388), (131, 115562), (134, 115574), (138, 115589), (142, 115646),

Gene: ChickenPhender\_216 Start: 121398, Stop: 122423, Start Num: 9

Candidate Starts for ChickenPhender\_216:

(Start: 9 @121398 has 114 MA's), (Start: 11 @121407 has 71 MA's), (17, 121446), (20, 121467), (26, 121542), (28, 121554), (32, 121584), (71, 121866), (75, 121896), (77, 121929), (85, 121992), (94, 122070), (98, 122103), (105, 122133), (123, 122268), (128, 122304), (142, 122418),

Gene: Chomp\_220 Start: 124030, Stop: 125046, Start Num: 11

Candidate Starts for Chomp\_220:

(Start: 9 @124021 has 114 MA's), (Start: 11 @124030 has 71 MA's), (17, 124069), (20, 124090), (26, 124165), (28, 124177), (32, 124207), (71, 124489), (75, 124519), (77, 124552), (85, 124615), (94, 124693), (98, 124726), (105, 124756), (123, 124891), (128, 124927), (142, 125041),

Gene: CindyLou\_221 Start: 124281, Stop: 125306, Start Num: 9

Candidate Starts for CindyLou\_221:

(Start: 9 @124281 has 114 MA's), (Start: 11 @124290 has 71 MA's), (17, 124329), (20, 124350), (26, 124425), (28, 124437), (32, 124467), (71, 124749), (75, 124779), (77, 124812), (85, 124875), (94,

124953), (98, 124986), (105, 125016), (123, 125151), (128, 125187), (142, 125301),

Gene: Cleatunium\_213 Start: 122661, Stop: 123683, Start Num: 11

Candidate Starts for Cleatunium\_213:

(Start: 9 @122652 has 114 MA's), (Start: 11 @122661 has 71 MA's), (17, 122700), (20, 122721), (26, 122796), (28, 122808), (32, 122838), (71, 123120), (75, 123150), (77, 123183), (85, 123246), (94, 123324), (98, 123357), (105, 123387), (123, 123522), (128, 123558), (136, 123606), (142, 123678),

Gene: Colt\_211 Start: 126054, Stop: 127070, Start Num: 11

Candidate Starts for Colt\_211:

(Start: 9 @126045 has 114 MA's), (Start: 11 @126054 has 71 MA's), (17, 126093), (20, 126114), (26, 126189), (28, 126201), (32, 126231), (71, 126513), (75, 126543), (77, 126576), (85, 126639), (94, 126717), (98, 126750), (105, 126780), (123, 126915), (128, 126951), (142, 127065),

Gene: Concombre\_225 Start: 124948, Stop: 125904, Start Num: 20

Candidate Starts for Concombre\_225:

(Start: 9 @124879 has 114 MA's), (Start: 11 @124888 has 71 MA's), (17, 124927), (20, 124948), (26, 125023), (28, 125035), (32, 125065), (71, 125347), (75, 125377), (77, 125410), (85, 125473), (94, 125551), (98, 125584), (105, 125614), (123, 125749), (128, 125785), (142, 125899),

Gene: DTDevon\_222 Start: 124779, Stop: 125795, Start Num: 11

Candidate Starts for DTDevon\_222:

(Start: 9 @124770 has 114 MA's), (Start: 11 @124779 has 71 MA's), (17, 124818), (20, 124839), (26, 124914), (28, 124926), (32, 124956), (71, 125238), (75, 125268), (77, 125301), (85, 125364), (94, 125442), (98, 125475), (105, 125505), (123, 125640), (128, 125676), (142, 125790),

Gene: Daffodil\_225 Start: 123723, Stop: 124748, Start Num: 9

Candidate Starts for Daffodil\_225:

(Start: 9 @123723 has 114 MA's), (Start: 11 @123732 has 71 MA's), (17, 123771), (20, 123792), (26, 123867), (28, 123879), (32, 123909), (71, 124191), (75, 124221), (77, 124254), (85, 124317), (94, 124395), (98, 124428), (105, 124458), (123, 124593), (128, 124629), (142, 124743),

Gene: Dandelion\_228 Start: 126372, Stop: 127388, Start Num: 11

Candidate Starts for Dandelion\_228:

(Start: 9 @126363 has 114 MA's), (Start: 11 @126372 has 71 MA's), (17, 126411), (20, 126432), (26, 126507), (28, 126519), (32, 126549), (71, 126831), (75, 126861), (77, 126894), (85, 126957), (94, 127035), (98, 127068), (105, 127098), (123, 127233), (128, 127269), (142, 127383),

Gene: Darko\_219 Start: 122969, Stop: 123994, Start Num: 9

Candidate Starts for Darko\_219:

(Start: 9 @122969 has 114 MA's), (Start: 11 @122978 has 71 MA's), (17, 123017), (20, 123038), (26, 123113), (28, 123125), (32, 123155), (71, 123437), (75, 123467), (77, 123500), (85, 123563), (94, 123641), (98, 123674), (105, 123704), (123, 123839), (128, 123875), (142, 123989),

Gene: DeejaClivia\_208 Start: 121099, Stop: 122130, Start Num: 9

Candidate Starts for DeejaClivia\_208:

(Start: 9 @121099 has 114 MA's), (Start: 11 @121108 has 71 MA's), (17, 121147), (20, 121168), (26, 121243), (28, 121255), (32, 121285), (71, 121567), (75, 121597), (77, 121630), (85, 121693), (94, 121771), (98, 121804), (105, 121834), (123, 121969), (128, 122005), (136, 122053), (142, 122125),

Gene: Delilah\_218 Start: 123853, Stop: 124878, Start Num: 9

Candidate Starts for Delilah\_218:

(Start: 9 @123853 has 114 MA's), (Start: 11 @123862 has 71 MA's), (17, 123901), (20, 123922), (26, 123997), (28, 124009), (32, 124039), (71, 124321), (75, 124351), (77, 124384), (85, 124447), (94, 124525), (98, 124558), (105, 124588), (123, 124723), (128, 124759), (142, 124873),

Gene: Delylah\_222 Start: 124130, Stop: 125155, Start Num: 9

Candidate Starts for Delylah\_222:

(Start: 9 @124130 has 114 MA's), (Start: 11 @124139 has 71 MA's), (17, 124178), (20, 124199), (26, 124274), (28, 124286), (32, 124316), (71, 124598), (75, 124628), (77, 124661), (85, 124724), (94, 124802), (98, 124835), (105, 124865), (123, 125000), (128, 125036), (142, 125150),

Gene: Demodog\_226 Start: 124898, Stop: 125914, Start Num: 11

Candidate Starts for Demodog\_226:

(Start: 9 @124889 has 114 MA's), (Start: 11 @124898 has 71 MA's), (17, 124937), (20, 124958), (26, 125033), (28, 125045), (32, 125075), (71, 125357), (75, 125387), (77, 125420), (85, 125483), (94, 125561), (98, 125594), (105, 125624), (123, 125759), (128, 125795), (142, 125909),

Gene: Derek\_217 Start: 123307, Stop: 124323, Start Num: 11

Candidate Starts for Derek\_217:

(Start: 9 @123298 has 114 MA's), (Start: 11 @123307 has 71 MA's), (17, 123346), (20, 123367), (26, 123442), (28, 123454), (32, 123484), (71, 123766), (75, 123796), (77, 123829), (85, 123892), (94, 123970), (98, 124003), (105, 124033), (123, 124168), (128, 124204), (142, 124318),

Gene: Dessert\_218 Start: 122307, Stop: 123323, Start Num: 11

Candidate Starts for Dessert\_218:

(Start: 9 @122298 has 114 MA's), (Start: 11 @122307 has 71 MA's), (17, 122346), (20, 122367), (26, 122442), (28, 122454), (32, 122484), (71, 122766), (75, 122796), (77, 122829), (85, 122892), (94, 122970), (98, 123003), (105, 123033), (123, 123168), (128, 123204), (142, 123318),

Gene: Dietrick\_209 Start: 121983, Stop: 122999, Start Num: 11

Candidate Starts for Dietrick\_209:

(Start: 9 @121974 has 114 MA's), (Start: 11 @121983 has 71 MA's), (17, 122022), (20, 122043), (26, 122118), (28, 122130), (32, 122160), (71, 122442), (75, 122472), (77, 122505), (85, 122568), (94, 122646), (98, 122679), (105, 122709), (123, 122844), (128, 122880), (142, 122994),

Gene: DirtMonster\_213 Start: 123202, Stop: 124227, Start Num: 9

Candidate Starts for DirtMonster\_213:

(Start: 9 @123202 has 114 MA's), (Start: 11 @123211 has 71 MA's), (17, 123250), (20, 123271), (26, 123346), (28, 123358), (32, 123388), (71, 123670), (75, 123700), (77, 123733), (85, 123796), (94, 123874), (98, 123907), (105, 123937), (123, 124072), (128, 124108), (142, 124222),

Gene: Domi\_214 Start: 123313, Stop: 124338, Start Num: 9

Candidate Starts for Domi\_214:

(Start: 9 @123313 has 114 MA's), (Start: 11 @123322 has 71 MA's), (17, 123361), (20, 123382), (26, 123457), (28, 123469), (32, 123499), (71, 123781), (75, 123811), (77, 123844), (85, 123907), (94, 123985), (98, 124018), (105, 124048), (123, 124183), (128, 124219), (142, 124333),

Gene: DrPhinkDaddy\_217 Start: 124510, Stop: 125526, Start Num: 11

Candidate Starts for DrPhinkDaddy\_217:

(Start: 9 @124501 has 114 MA's), (Start: 11 @124510 has 71 MA's), (17, 124549), (20, 124570), (26, 124645), (28, 124657), (32, 124687), (71, 124969), (75, 124999), (77, 125032), (85, 125095), (94, 125173), (98, 125206), (105, 125236), (123, 125371), (128, 125407), (142, 125521),

Gene: Drazdys\_218 Start: 123415, Stop: 124440, Start Num: 9

Candidate Starts for Drazdys\_218:

(Start: 9 @123415 has 114 MA's), (Start: 11 @123424 has 71 MA's), (17, 123463), (20, 123484), (26, 123559), (28, 123571), (32, 123601), (71, 123883), (75, 123913), (77, 123946), (85, 124009), (94, 124087), (98, 124120), (105, 124150), (123, 124285), (128, 124321), (142, 124435),

Gene: Duckfeet\_214 Start: 122929, Stop: 123954, Start Num: 9

Candidate Starts for Duckfeet\_214:

(Start: 9 @122929 has 114 MA's), (Start: 11 @122938 has 71 MA's), (17, 122977), (20, 122998), (26, 123073), (28, 123085), (32, 123115), (71, 123397), (75, 123427), (77, 123460), (85, 123523), (94, 123601), (98, 123634), (105, 123664), (123, 123799), (128, 123835), (142, 123949),

Gene: ET08\_208 Start: 123003, Stop: 124019, Start Num: 11

Candidate Starts for ET08\_208:

(Start: 9 @122994 has 114 MA's), (Start: 11 @123003 has 71 MA's), (17, 123042), (20, 123063), (26, 123138), (28, 123150), (32, 123180), (71, 123462), (75, 123492), (77, 123525), (85, 123588), (94, 123666), (98, 123699), (105, 123729), (123, 123864), (128, 123900), (142, 124014),

Gene: EasyJones\_223 Start: 122494, Stop: 123519, Start Num: 9

Candidate Starts for EasyJones\_223:

(Start: 9 @122494 has 114 MA's), (Start: 11 @122503 has 71 MA's), (17, 122542), (20, 122563), (26, 122638), (28, 122650), (32, 122680), (71, 122962), (75, 122992), (77, 123025), (85, 123088), (94, 123166), (98, 123199), (105, 123229), (123, 123364), (128, 123400), (142, 123514),

Gene: EggyFarm\_229 Start: 125346, Stop: 126362, Start Num: 11

Candidate Starts for EggyFarm\_229:

(Start: 9 @125337 has 114 MA's), (Start: 11 @125346 has 71 MA's), (17, 125385), (20, 125406), (26, 125481), (28, 125493), (32, 125523), (71, 125805), (75, 125835), (77, 125868), (85, 125931), (94, 126009), (98, 126042), (105, 126072), (123, 126207), (128, 126243), (142, 126357),

Gene: EmToTheThree\_220 Start: 123883, Stop: 124905, Start Num: 11

Candidate Starts for EmToTheThree\_220:

(Start: 9 @123874 has 114 MA's), (Start: 11 @123883 has 71 MA's), (17, 123922), (20, 123943), (26, 124018), (28, 124030), (32, 124060), (71, 124342), (75, 124372), (77, 124405), (85, 124468), (94, 124546), (98, 124579), (105, 124609), (123, 124744), (128, 124780), (136, 124828), (142, 124900),

Gene: EmmaElysia\_224 Start: 124186, Stop: 125202, Start Num: 11

Candidate Starts for EmmaElysia\_224:

(Start: 9 @124177 has 114 MA's), (Start: 11 @124186 has 71 MA's), (17, 124225), (20, 124246), (26, 124321), (28, 124333), (32, 124363), (71, 124645), (75, 124675), (77, 124708), (85, 124771), (94, 124849), (98, 124882), (105, 124912), (123, 125047), (128, 125083), (142, 125197),

Gene: Erdmann\_221 Start: 123845, Stop: 124870, Start Num: 9

Candidate Starts for Erdmann\_221:

(Start: 9 @123845 has 114 MA's), (Start: 11 @123854 has 71 MA's), (17, 123893), (20, 123914), (26, 123989), (28, 124001), (32, 124031), (34, 124088), (71, 124313), (75, 124343), (77, 124376), (85, 124439), (94, 124517), (98, 124550), (105, 124580), (123, 124715), (128, 124751), (142, 124865),

Gene: ErnieJ\_213 Start: 120673, Stop: 121698, Start Num: 9

Candidate Starts for ErnieJ\_213:

(Start: 9 @120673 has 114 MA's), (Start: 11 @120682 has 71 MA's), (17, 120721), (20, 120742), (26, 120817), (28, 120829), (32, 120859), (71, 121141), (75, 121171), (77, 121204), (85, 121267), (94, 121345), (98, 121378), (105, 121408), (123, 121543), (128, 121579), (142, 121693),

Gene: Essence\_217 Start: 122636, Stop: 123652, Start Num: 11

Candidate Starts for Essence\_217:

(Start: 9 @122627 has 114 MA's), (Start: 11 @122636 has 71 MA's), (17, 122675), (20, 122696), (26, 122771), (28, 122783), (32, 122813), (71, 123095), (75, 123125), (77, 123158), (85, 123221), (94, 123299), (98, 123332), (105, 123362), (123, 123497), (128, 123533), (142, 123647),

Gene: Ewok\_219 Start: 123751, Stop: 124776, Start Num: 9

Candidate Starts for Ewok\_219:

(Start: 9 @123751 has 114 MA's), (Start: 11 @123760 has 71 MA's), (17, 123799), (20, 123820), (26, 123895), (28, 123907), (32, 123937), (71, 124219), (75, 124249), (77, 124282), (85, 124345), (94, 124423), (98, 124456), (105, 124486), (123, 124621), (128, 124657), (142, 124771),

Gene: Finch\_86 Start: 73939, Stop: 74976, Start Num: 10

Candidate Starts for Finch\_86:

(4, 73780), (6, 73822), (7, 73885), (8, 73894), (Start: 9 @73933 has 114 MA's), (Start: 10 @73939 has 1 MA's), (17, 73981), (19, 73996), (27, 74083), (30, 74113), (33, 74149), (37, 74215), (40, 74236), (41, 74239), (42, 74248), (50, 74287), (54, 74329), (58, 74350), (66, 74395), (69, 74407), (75, 74458), (80, 74539), (83, 74554), (84, 74569), (87, 74608), (89, 74632), (90, 74638), (91, 74641), (107, 74713), (117, 74791), (124, 74842), (130, 74881), (137, 74911), (139, 74947),

Gene: Fixie\_220 Start: 123416, Stop: 124432, Start Num: 11

Candidate Starts for Fixie\_220:

(Start: 9 @123407 has 114 MA's), (Start: 11 @123416 has 71 MA's), (17, 123455), (20, 123476), (26, 123551), (28, 123563), (32, 123593), (71, 123875), (75, 123905), (77, 123938), (85, 124001), (94, 124079), (98, 124112), (105, 124142), (123, 124277), (128, 124313), (142, 124427),

Gene: Flabslab\_215 Start: 120812, Stop: 121834, Start Num: 11

Candidate Starts for Flabslab\_215:

(Start: 9 @120803 has 114 MA's), (Start: 11 @120812 has 71 MA's), (17, 120851), (20, 120872), (26, 120947), (28, 120959), (32, 120989), (71, 121271), (75, 121301), (77, 121334), (85, 121397), (94, 121475), (98, 121508), (105, 121538), (123, 121673), (128, 121709), (136, 121757), (142, 121829),

Gene: Fludd\_220 Start: 122215, Stop: 123231, Start Num: 11

Candidate Starts for Fludd\_220:

(Start: 9 @122206 has 114 MA's), (Start: 11 @122215 has 71 MA's), (17, 122254), (20, 122275), (26, 122350), (28, 122362), (32, 122392), (71, 122674), (75, 122704), (77, 122737), (85, 122800), (94, 122878), (98, 122911), (105, 122941), (123, 123076), (128, 123112), (142, 123226),

Gene: Fongie\_221 Start: 123795, Stop: 124811, Start Num: 11

Candidate Starts for Fongie\_221:

(Start: 9 @123786 has 114 MA's), (Start: 11 @123795 has 71 MA's), (17, 123834), (20, 123855), (26, 123930), (28, 123942), (32, 123972), (71, 124254), (75, 124284), (77, 124317), (85, 124380), (94, 124458), (98, 124491), (105, 124521), (123, 124656), (128, 124692), (142, 124806),

Gene: FoxtrotP1\_218 Start: 124440, Stop: 125456, Start Num: 11

Candidate Starts for FoxtrotP1\_218:

(Start: 9 @124431 has 114 MA's), (Start: 11 @124440 has 71 MA's), (17, 124479), (20, 124500), (26, 124575), (28, 124587), (32, 124617), (71, 124899), (75, 124929), (77, 124962), (85, 125025), (94, 125103), (98, 125136), (105, 125166), (123, 125301), (128, 125337), (142, 125451),

Gene: FrayBell\_223 Start: 122284, Stop: 123309, Start Num: 9

Candidate Starts for FrayBell\_223:

(Start: 9 @122284 has 114 MA's), (Start: 11 @122293 has 71 MA's), (17, 122332), (20, 122353), (26, 122428), (28, 122440), (32, 122470), (71, 122752), (75, 122782), (77, 122815), (85, 122878), (94, 122956), (98, 122989), (105, 123019), (123, 123154), (128, 123190), (142, 123304),

Gene: FudgeTart\_215 Start: 122898, Stop: 123923, Start Num: 9

Candidate Starts for FudgeTart\_215:

(Start: 9 @122898 has 114 MA's), (Start: 11 @122907 has 71 MA's), (17, 122946), (20, 122967), (26, 123042), (28, 123054), (32, 123084), (71, 123366), (75, 123396), (77, 123429), (85, 123492), (94, 123570), (98, 123603), (105, 123633), (123, 123768), (128, 123804), (142, 123918),

Gene: Gabriel\_223 Start: 122365, Stop: 123390, Start Num: 9

Candidate Starts for Gabriel\_223:

(Start: 9 @122365 has 114 MA's), (Start: 11 @122374 has 71 MA's), (17, 122413), (20, 122434), (26, 122509), (28, 122521), (32, 122551), (71, 122833), (75, 122863), (77, 122896), (85, 122959), (94, 123037), (98, 123070), (105, 123100), (123, 123235), (128, 123271), (142, 123385),

Gene: Gamgam\_221 Start: 122722, Stop: 123747, Start Num: 9

Candidate Starts for Gamgam\_221:

(Start: 9 @122722 has 114 MA's), (Start: 11 @122731 has 71 MA's), (17, 122770), (20, 122791), (26, 122866), (28, 122878), (32, 122908), (71, 123190), (75, 123220), (77, 123253), (85, 123316), (94, 123394), (98, 123427), (105, 123457), (123, 123592), (128, 123628), (142, 123742),

Gene: Ghost\_220 Start: 122643, Stop: 123668, Start Num: 9

Candidate Starts for Ghost\_220:

(Start: 9 @122643 has 114 MA's), (Start: 11 @122652 has 71 MA's), (17, 122691), (20, 122712), (26, 122787), (28, 122799), (32, 122829), (71, 123111), (75, 123141), (77, 123174), (85, 123237), (94, 123315), (98, 123348), (105, 123378), (123, 123513), (128, 123549), (142, 123663),

Gene: Gizmo\_226 Start: 125761, Stop: 126786, Start Num: 9

Candidate Starts for Gizmo\_226:

(Start: 9 @125761 has 114 MA's), (Start: 11 @125770 has 71 MA's), (17, 125809), (20, 125830), (26, 125905), (28, 125917), (32, 125947), (71, 126229), (75, 126259), (77, 126292), (85, 126355), (94, 126433), (98, 126466), (105, 126496), (123, 126631), (128, 126667), (142, 126781),

Gene: GlutenPhree\_221 Start: 122733, Stop: 123758, Start Num: 9

Candidate Starts for GlutenPhree\_221:

(Start: 9 @122733 has 114 MA's), (Start: 11 @122742 has 71 MA's), (17, 122781), (20, 122802), (26, 122877), (28, 122889), (32, 122919), (71, 123201), (75, 123231), (77, 123264), (85, 123327), (94, 123405), (98, 123438), (105, 123468), (123, 123603), (128, 123639), (142, 123753),

Gene: Grasshills\_228 Start: 125345, Stop: 126361, Start Num: 11

Candidate Starts for Grasshills\_228:

(Start: 9 @125336 has 114 MA's), (Start: 11 @125345 has 71 MA's), (17, 125384), (20, 125405), (26, 125480), (28, 125492), (32, 125522), (71, 125804), (75, 125834), (77, 125867), (85, 125930), (94, 126008), (98, 126041), (105, 126071), (123, 126206), (128, 126242), (142, 126356),

Gene: Greely\_211 Start: 119945, Stop: 120928, Start Num: 11

Candidate Starts for Greely\_211:

(Start: 11 @119945 has 71 MA's), (16, 119969), (18, 119990), (26, 120080), (27, 120086), (37, 120215), (38, 120218), (62, 120368), (64, 120371), (96, 120635), (98, 120644), (110, 120701), (112, 120722), (116, 120749), (119, 120755), (128, 120821), (133, 120848), (135, 120857), (141, 120914),

Gene: Grungle\_204 Start: 120677, Stop: 121693, Start Num: 11

Candidate Starts for Grungle\_204:

(Start: 9 @120668 has 114 MA's), (Start: 11 @120677 has 71 MA's), (17, 120716), (20, 120737), (26, 120812), (28, 120824), (32, 120854), (71, 121136), (75, 121166), (77, 121199), (85, 121262), (94, 121340), (98, 121373), (105, 121403), (123, 121538), (128, 121574), (142, 121688),

Gene: Guwapp\_215 Start: 121486, Stop: 122502, Start Num: 11

Candidate Starts for Guwapp\_215:

(Start: 9 @121477 has 114 MA's), (Start: 11 @121486 has 71 MA's), (17, 121525), (20, 121546), (26, 121621), (28, 121633), (32, 121663), (71, 121945), (75, 121975), (77, 122008), (85, 122071), (94, 122149), (98, 122182), (105, 122212), (123, 122347), (128, 122383), (142, 122497),

Gene: Halldule\_213 Start: 121859, Stop: 122875, Start Num: 11

Candidate Starts for Halldule\_213:

(Start: 9 @121850 has 114 MA's), (Start: 11 @121859 has 71 MA's), (17, 121898), (20, 121919), (26, 121994), (28, 122006), (32, 122036), (71, 122318), (75, 122348), (77, 122381), (85, 122444), (94, 122522), (98, 122555), (105, 122585), (123, 122720), (128, 122756), (142, 122870),

Gene: HyRo\_208 Start: 121990, Stop: 123012, Start Num: 11

Candidate Starts for HyRo\_208:

(Start: 9 @121981 has 114 MA's), (Start: 11 @121990 has 71 MA's), (17, 122029), (20, 122050), (26, 122125), (28, 122137), (32, 122167), (71, 122449), (75, 122479), (77, 122512), (85, 122575), (94, 122653), (98, 122686), (105, 122716), (123, 122851), (128, 122887), (136, 122935), (142, 123007),

Gene: I3\_230 Start: 124435, Stop: 125451, Start Num: 11

Candidate Starts for I3\_230:

(Start: 9 @124426 has 114 MA's), (Start: 11 @124435 has 71 MA's), (17, 124474), (20, 124495), (26, 124570), (28, 124582), (32, 124612), (71, 124894), (75, 124924), (77, 124957), (85, 125020), (94, 125098), (98, 125131), (105, 125161), (123, 125296), (128, 125332), (142, 125446),

Gene: IkeLoa\_212 Start: 122384, Stop: 123400, Start Num: 11

Candidate Starts for IkeLoa\_212:

(Start: 9 @122375 has 114 MA's), (Start: 11 @122384 has 71 MA's), (17, 122423), (20, 122444), (26, 122519), (28, 122531), (32, 122561), (71, 122843), (75, 122873), (77, 122906), (85, 122969), (94, 123047), (98, 123080), (105, 123110), (123, 123245), (128, 123281), (142, 123395),

Gene: InigoMontoya\_223 Start: 123396, Stop: 124421, Start Num: 9

Candidate Starts for InigoMontoya\_223:

(Start: 9 @123396 has 114 MA's), (Start: 11 @123405 has 71 MA's), (17, 123444), (20, 123465), (26, 123540), (28, 123552), (32, 123582), (71, 123864), (75, 123894), (77, 123927), (85, 123990), (94, 124068), (98, 124101), (105, 124131), (123, 124266), (128, 124302), (142, 124416),

Gene: InterFolia\_223 Start: 124098, Stop: 125114, Start Num: 11

Candidate Starts for InterFolia\_223:

(Start: 9 @124089 has 114 MA's), (Start: 11 @124098 has 71 MA's), (17, 124137), (20, 124158), (26, 124233), (28, 124245), (32, 124275), (71, 124557), (75, 124587), (77, 124620), (85, 124683), (94, 124761), (98, 124794), (105, 124824), (123, 124959), (128, 124995), (142, 125109),

Gene: Iota\_215 Start: 123069, Stop: 124094, Start Num: 9

Candidate Starts for Iota\_215:

(Start: 9 @123069 has 114 MA's), (Start: 11 @123078 has 71 MA's), (17, 123117), (20, 123138), (26, 123213), (28, 123225), (32, 123255), (71, 123537), (75, 123567), (77, 123600), (85, 123663), (94, 123741), (98, 123774), (105, 123804), (123, 123939), (128, 123975), (142, 124089),

Gene: Issimir\_213 Start: 123043, Stop: 124059, Start Num: 11

Candidate Starts for Issimir\_213:

(Start: 9 @123034 has 114 MA's), (Start: 11 @123043 has 71 MA's), (17, 123082), (20, 123103), (26, 123178), (28, 123190), (32, 123220), (71, 123502), (75, 123532), (77, 123565), (85, 123628), (94, 123706), (98, 123739), (105, 123769), (123, 123904), (128, 123940), (142, 124054),

Gene: Izajani\_218 Start: 123900, Stop: 124916, Start Num: 11

Candidate Starts for Izajani\_218:

(Start: 9 @123891 has 114 MA's), (Start: 11 @123900 has 71 MA's), (17, 123939), (20, 123960), (26, 124035), (28, 124047), (32, 124077), (71, 124359), (75, 124389), (77, 124422), (85, 124485), (94, 124563), (98, 124596), (105, 124626), (123, 124761), (128, 124797), (142, 124911),

Gene: JPickles\_216 Start: 121381, Stop: 122406, Start Num: 9

Candidate Starts for JPickles\_216:

(Start: 9 @121381 has 114 MA's), (Start: 11 @121390 has 71 MA's), (17, 121429), (20, 121450), (26, 121525), (28, 121537), (32, 121567), (71, 121849), (75, 121879), (77, 121912), (85, 121975), (94, 122053), (98, 122086), (105, 122116), (123, 122251), (128, 122287), (142, 122401),

Gene: Janiyra\_223 Start: 123621, Stop: 124646, Start Num: 9

Candidate Starts for Janiyra\_223:

(Start: 9 @123621 has 114 MA's), (Start: 11 @123630 has 71 MA's), (17, 123669), (20, 123690), (26, 123765), (28, 123777), (32, 123807), (71, 124089), (75, 124119), (77, 124152), (85, 124215), (94, 124293), (98, 124326), (105, 124356), (123, 124491), (128, 124527), (142, 124641),

Gene: JayJay\_222 Start: 123313, Stop: 124344, Start Num: 9

Candidate Starts for JayJay\_222:

(Start: 9 @123313 has 114 MA's), (Start: 11 @123322 has 71 MA's), (17, 123361), (20, 123382), (26, 123457), (28, 123469), (32, 123499), (71, 123781), (75, 123811), (77, 123844), (85, 123907), (94, 123985), (98, 124018), (105, 124048), (123, 124183), (128, 124219), (136, 124267), (142, 124339),

Gene: Jaygup\_216 Start: 122451, Stop: 123467, Start Num: 11

Candidate Starts for Jaygup\_216:

(Start: 9 @122442 has 114 MA's), (Start: 11 @122451 has 71 MA's), (17, 122490), (20, 122511), (26, 122586), (28, 122598), (32, 122628), (71, 122910), (75, 122940), (77, 122973), (85, 123036), (94, 123114), (98, 123147), (105, 123177), (123, 123312), (128, 123348), (142, 123462),

Gene: Jedediah\_220 Start: 123495, Stop: 124520, Start Num: 9

Candidate Starts for Jedediah\_220:

(Start: 9 @123495 has 114 MA's), (Start: 11 @123504 has 71 MA's), (17, 123543), (20, 123564), (26, 123639), (28, 123651), (32, 123681), (71, 123963), (75, 123993), (77, 124026), (85, 124089), (94, 124167), (98, 124200), (105, 124230), (123, 124365), (128, 124401), (142, 124515),

Gene: Jemmno\_219 Start: 122324, Stop: 123349, Start Num: 9

Candidate Starts for Jemmno\_219:

(Start: 9 @122324 has 114 MA's), (Start: 11 @122333 has 71 MA's), (17, 122372), (20, 122393), (26, 122468), (28, 122480), (32, 122510), (71, 122792), (75, 122822), (77, 122855), (85, 122918), (94, 122996), (98, 123029), (105, 123059), (123, 123194), (128, 123230), (142, 123344),

Gene: Jessibeth14\_220 Start: 124509, Stop: 125531, Start Num: 11

Candidate Starts for Jessibeth14\_220:

(Start: 9 @124500 has 114 MA's), (Start: 11 @124509 has 71 MA's), (17, 124548), (20, 124569), (26, 124644), (28, 124656), (32, 124686), (71, 124968), (75, 124998), (77, 125031), (85, 125094), (94, 125172), (98, 125205), (105, 125235), (123, 125370), (128, 125406), (136, 125454), (142, 125526),

Gene: Jezreel\_217 Start: 123570, Stop: 124595, Start Num: 9

Candidate Starts for Jezreel\_217:

(Start: 9 @123570 has 114 MA's), (Start: 11 @123579 has 71 MA's), (17, 123618), (20, 123639), (26, 123714), (28, 123726), (32, 123756), (71, 124038), (75, 124068), (77, 124101), (85, 124164), (94, 124242), (98, 124275), (105, 124305), (123, 124440), (128, 124476), (142, 124590),

Gene: JigglyPuff\_227 Start: 124896, Stop: 125912, Start Num: 11

Candidate Starts for JigglyPuff\_227:

(Start: 9 @124887 has 114 MA's), (Start: 11 @124896 has 71 MA's), (17, 124935), (20, 124956), (26, 125031), (28, 125043), (32, 125073), (71, 125355), (75, 125385), (77, 125418), (85, 125481), (94, 125559), (98, 125592), (105, 125622), (123, 125757), (128, 125793), (142, 125907),

Gene: JulietS\_211 Start: 120610, Stop: 121635, Start Num: 9

Candidate Starts for JulietS\_211:

(Start: 9 @120610 has 114 MA's), (Start: 11 @120619 has 71 MA's), (17, 120658), (20, 120679), (26, 120754), (28, 120766), (32, 120796), (71, 121078), (75, 121108), (77, 121141), (85, 121204), (94, 121282), (98, 121315), (105, 121345), (123, 121480), (128, 121516), (142, 121630),

Gene: JustHall\_214 Start: 122525, Stop: 123547, Start Num: 11

Candidate Starts for JustHall\_214:

(Start: 9 @122516 has 114 MA's), (Start: 11 @122525 has 71 MA's), (17, 122564), (20, 122585), (26, 122660), (28, 122672), (32, 122702), (71, 122984), (75, 123014), (77, 123047), (85, 123110), (94, 123188), (98, 123221), (105, 123251), (123, 123386), (128, 123422), (136, 123470), (142, 123542),

Gene: Kamryn\_219 Start: 124155, Stop: 125171, Start Num: 11

Candidate Starts for Kamryn\_219:

(Start: 9 @124146 has 114 MA's), (Start: 11 @124155 has 71 MA's), (17, 124194), (20, 124215), (26, 124290), (28, 124302), (32, 124332), (71, 124614), (75, 124644), (77, 124677), (85, 124740), (94, 124818), (98, 124851), (105, 124881), (123, 125016), (128, 125052), (142, 125166),

Gene: Kboogie\_224 Start: 123186, Stop: 124211, Start Num: 9

Candidate Starts for Kboogie\_224:

(Start: 9 @123186 has 114 MA's), (Start: 11 @123195 has 71 MA's), (17, 123234), (20, 123255), (26, 123330), (28, 123342), (32, 123372), (71, 123654), (75, 123684), (77, 123717), (85, 123780), (94, 123858), (98, 123891), (105, 123921), (123, 124056), (128, 124092), (142, 124206),

Gene: Khaleesi\_219 Start: 123976, Stop: 124998, Start Num: 11

Candidate Starts for Khaleesi\_219:

(Start: 9 @123967 has 114 MA's), (Start: 11 @123976 has 71 MA's), (17, 124015), (20, 124036), (26, 124111), (28, 124123), (32, 124153), (71, 124435), (75, 124465), (77, 124498), (85, 124561), (94, 124639), (98, 124672), (105, 124702), (123, 124837), (128, 124873), (136, 124921), (142, 124993),

Gene: Koguma\_219 Start: 122836, Stop: 123852, Start Num: 11

Candidate Starts for Koguma\_219:

(Start: 9 @122827 has 114 MA's), (Start: 11 @122836 has 71 MA's), (17, 122875), (20, 122896), (26, 122971), (28, 122983), (32, 123013), (71, 123295), (75, 123325), (77, 123358), (85, 123421), (94, 123499), (98, 123532), (105, 123562), (123, 123697), (128, 123733), (142, 123847),

Gene: LRRHood\_213 Start: 122179, Stop: 123204, Start Num: 9

Candidate Starts for LRRHood\_213:

(Start: 9 @122179 has 114 MA's), (Start: 11 @122188 has 71 MA's), (17, 122227), (20, 122248), (26, 122323), (28, 122335), (32, 122365), (71, 122647), (75, 122677), (77, 122710), (85, 122773), (94,

122851), (98, 122884), (105, 122914), (123, 123049), (128, 123085), (142, 123199),

Gene: Labradorite\_218 Start: 121942, Stop: 122958, Start Num: 11

Candidate Starts for Labradorite\_218:

(Start: 9 @121933 has 114 MA's), (Start: 11 @121942 has 71 MA's), (17, 121981), (20, 122002), (26, 122077), (28, 122089), (32, 122119), (71, 122401), (75, 122431), (77, 122464), (85, 122527), (94, 122605), (98, 122638), (105, 122668), (123, 122803), (128, 122839), (142, 122953),

Gene: Latch\_220 Start: 122732, Stop: 123757, Start Num: 9

Candidate Starts for Latch\_220:

(Start: 9 @122732 has 114 MA's), (Start: 11 @122741 has 71 MA's), (17, 122780), (20, 122801), (26, 122876), (28, 122888), (32, 122918), (71, 123200), (75, 123230), (77, 123263), (85, 123326), (94, 123404), (98, 123437), (105, 123467), (123, 123602), (128, 123638), (142, 123752),

Gene: Lee7\_220 Start: 125356, Stop: 126372, Start Num: 11

Candidate Starts for Lee7\_220:

(Start: 9 @125347 has 114 MA's), (Start: 11 @125356 has 71 MA's), (17, 125395), (20, 125416), (26, 125491), (28, 125503), (32, 125533), (71, 125815), (75, 125845), (77, 125878), (85, 125941), (94, 126019), (98, 126052), (105, 126082), (123, 126217), (128, 126253), (142, 126367),

Gene: Lethe\_220 Start: 124622, Stop: 125647, Start Num: 9

Candidate Starts for Lethe\_220:

(Start: 9 @124622 has 114 MA's), (Start: 11 @124631 has 71 MA's), (17, 124670), (20, 124691), (26, 124766), (28, 124778), (32, 124808), (71, 125090), (75, 125120), (77, 125153), (85, 125216), (94, 125294), (98, 125327), (105, 125357), (123, 125492), (128, 125528), (142, 125642),

Gene: LifeSavor\_219 Start: 123257, Stop: 124282, Start Num: 9

Candidate Starts for LifeSavor\_219:

(Start: 9 @123257 has 114 MA's), (Start: 11 @123266 has 71 MA's), (17, 123305), (20, 123326), (26, 123401), (28, 123413), (32, 123443), (71, 123725), (75, 123755), (77, 123788), (85, 123851), (94, 123929), (98, 123962), (105, 123992), (123, 124127), (128, 124163), (142, 124277),

Gene: LinStu\_219 Start: 122466, Stop: 123491, Start Num: 9

Candidate Starts for LinStu\_219:

(Start: 9 @122466 has 114 MA's), (Start: 11 @122475 has 71 MA's), (17, 122514), (20, 122535), (26, 122610), (28, 122622), (32, 122652), (71, 122934), (75, 122964), (77, 122997), (85, 123060), (94, 123138), (98, 123171), (105, 123201), (123, 123336), (128, 123372), (142, 123486),

Gene: Littleton\_223 Start: 123969, Stop: 124994, Start Num: 9

Candidate Starts for Littleton\_223:

(Start: 9 @123969 has 114 MA's), (Start: 11 @123978 has 71 MA's), (17, 124017), (20, 124038), (26, 124113), (28, 124125), (32, 124155), (71, 124437), (75, 124467), (77, 124500), (85, 124563), (94, 124641), (98, 124674), (105, 124704), (123, 124839), (128, 124875), (142, 124989),

Gene: Loanshark\_217 Start: 123282, Stop: 124307, Start Num: 9

Candidate Starts for Loanshark\_217:

(Start: 9 @123282 has 114 MA's), (Start: 11 @123291 has 71 MA's), (17, 123330), (20, 123351), (26, 123426), (28, 123438), (32, 123468), (71, 123750), (75, 123780), (77, 123813), (85, 123876), (94, 123954), (98, 123987), (105, 124017), (123, 124152), (128, 124188), (142, 124302),

Gene: LolaVinca\_218 Start: 123519, Stop: 124544, Start Num: 9

Candidate Starts for LolaVinca\_218:

(Start: 9 @123519 has 114 MA's), (Start: 11 @123528 has 71 MA's), (17, 123567), (20, 123588), (26, 123663), (28, 123675), (32, 123705), (71, 123987), (75, 124017), (77, 124050), (85, 124113), (94, 124191), (98, 124224), (105, 124254), (123, 124389), (128, 124425), (142, 124539),

Gene: LookingGlass\_219 Start: 123486, Stop: 124502, Start Num: 11

Candidate Starts for LookingGlass\_219:

(Start: 9 @123477 has 114 MA's), (Start: 11 @123486 has 71 MA's), (17, 123525), (20, 123546), (26, 123621), (28, 123633), (32, 123663), (71, 123945), (75, 123975), (77, 124008), (85, 124071), (94, 124149), (98, 124182), (105, 124212), (123, 124347), (128, 124383), (142, 124497),

Gene: LordLeafolot\_221 Start: 123132, Stop: 124157, Start Num: 9

Candidate Starts for LordLeafolot\_221:

(Start: 9 @123132 has 114 MA's), (Start: 11 @123141 has 71 MA's), (17, 123180), (20, 123201), (26, 123276), (28, 123288), (32, 123318), (71, 123600), (75, 123630), (77, 123663), (85, 123726), (94, 123804), (98, 123837), (105, 123867), (123, 124002), (128, 124038), (142, 124152),

Gene: Lukilu\_211 Start: 124191, Stop: 125207, Start Num: 11

Candidate Starts for Lukilu\_211:

(Start: 9 @124182 has 114 MA's), (Start: 11 @124191 has 71 MA's), (17, 124230), (20, 124251), (26, 124326), (28, 124338), (32, 124368), (71, 124650), (75, 124680), (77, 124713), (85, 124776), (94, 124854), (98, 124887), (105, 124917), (123, 125052), (128, 125088), (142, 125202),

Gene: Lunareta\_218 Start: 123834, Stop: 124856, Start Num: 11

Candidate Starts for Lunareta\_218:

(Start: 9 @123825 has 114 MA's), (Start: 11 @123834 has 71 MA's), (17, 123873), (20, 123894), (26, 123969), (28, 123981), (32, 124011), (71, 124293), (75, 124323), (77, 124356), (85, 124419), (94, 124497), (98, 124530), (105, 124560), (123, 124695), (128, 124731), (136, 124779), (142, 124851),

Gene: Maby2021\_220 Start: 124423, Stop: 125448, Start Num: 9

Candidate Starts for Maby2021\_220:

(Start: 9 @124423 has 114 MA's), (Start: 11 @124432 has 71 MA's), (17, 124471), (20, 124492), (26, 124567), (28, 124579), (32, 124609), (71, 124891), (75, 124921), (77, 124954), (85, 125017), (94, 125095), (98, 125128), (105, 125158), (123, 125293), (128, 125329), (142, 125443),

Gene: Mangeria\_221 Start: 124525, Stop: 125550, Start Num: 9

Candidate Starts for Mangeria\_221:

(Start: 9 @124525 has 114 MA's), (Start: 11 @124534 has 71 MA's), (17, 124573), (20, 124594), (26, 124669), (28, 124681), (32, 124711), (71, 124993), (75, 125023), (77, 125056), (85, 125119), (94, 125197), (98, 125230), (105, 125260), (123, 125395), (128, 125431), (142, 125545),

Gene: Matsumoto\_218 Start: 123174, Stop: 124199, Start Num: 9

Candidate Starts for Matsumoto\_218:

(Start: 9 @123174 has 114 MA's), (Start: 11 @123183 has 71 MA's), (17, 123222), (20, 123243), (26, 123318), (28, 123330), (32, 123360), (71, 123642), (75, 123672), (77, 123705), (85, 123768), (94, 123846), (98, 123879), (105, 123909), (123, 124044), (128, 124080), (142, 124194),

Gene: Maturis\_217 Start: 122681, Stop: 123712, Start Num: 9

Candidate Starts for Maturis\_217:

(Start: 9 @122681 has 114 MA's), (Start: 11 @122690 has 71 MA's), (17, 122729), (20, 122750), (26, 122825), (28, 122837), (32, 122867), (71, 123149), (75, 123179), (77, 123212), (85, 123275), (94, 123353), (98, 123386), (105, 123416), (123, 123551), (128, 123587), (136, 123635), (142, 123707),

Gene: McGee\_219 Start: 122368, Stop: 123393, Start Num: 9

Candidate Starts for McGee\_219:

(Start: 9 @122368 has 114 MA's), (Start: 11 @122377 has 71 MA's), (17, 122416), (20, 122437), (26, 122512), (28, 122524), (32, 122554), (71, 122836), (75, 122866), (77, 122899), (85, 122962), (94, 123040), (98, 123073), (105, 123103), (123, 123238), (128, 123274), (142, 123388),

Gene: McWolfish\_217 Start: 123187, Stop: 124209, Start Num: 11

Candidate Starts for McWolfish\_217:

(Start: 9 @123178 has 114 MA's), (Start: 11 @123187 has 71 MA's), (17, 123226), (20, 123247), (26, 123322), (28, 123334), (32, 123364), (71, 123646), (75, 123676), (77, 123709), (85, 123772), (94, 123850), (98, 123883), (105, 123913), (123, 124048), (128, 124084), (136, 124132), (142, 124204),

Gene: Megamind\_217 Start: 123469, Stop: 124494, Start Num: 9

Candidate Starts for Megamind\_217:

(Start: 9 @123469 has 114 MA's), (Start: 11 @123478 has 71 MA's), (17, 123517), (20, 123538), (26, 123613), (28, 123625), (32, 123655), (71, 123937), (75, 123967), (77, 124000), (85, 124063), (94, 124141), (98, 124174), (105, 124204), (123, 124339), (128, 124375), (142, 124489),

Gene: Melpomini\_215 Start: 122266, Stop: 123291, Start Num: 9

Candidate Starts for Melpomini\_215:

(Start: 9 @122266 has 114 MA's), (Start: 11 @122275 has 71 MA's), (17, 122314), (20, 122335), (26, 122410), (28, 122422), (32, 122452), (71, 122734), (75, 122764), (77, 122797), (85, 122860), (94, 122938), (98, 122971), (105, 123001), (123, 123136), (128, 123172), (142, 123286),

Gene: MikeLiesIn\_222 Start: 124605, Stop: 125630, Start Num: 9

Candidate Starts for MikeLiesIn\_222:

(Start: 9 @124605 has 114 MA's), (Start: 11 @124614 has 71 MA's), (17, 124653), (20, 124674), (26, 124749), (28, 124761), (32, 124791), (71, 125073), (75, 125103), (77, 125136), (85, 125199), (94, 125277), (98, 125310), (105, 125340), (123, 125475), (128, 125511), (142, 125625),

Gene: Mikro\_216 Start: 125163, Stop: 126179, Start Num: 11

Candidate Starts for Mikro\_216:

(Start: 9 @125154 has 114 MA's), (Start: 11 @125163 has 71 MA's), (17, 125202), (20, 125223), (26, 125298), (28, 125310), (32, 125340), (71, 125622), (75, 125652), (77, 125685), (85, 125748), (94, 125826), (98, 125859), (105, 125889), (123, 126024), (128, 126060), (142, 126174),

Gene: MoMoMixon\_218 Start: 123653, Stop: 124675, Start Num: 11

Candidate Starts for MoMoMixon\_218:

(Start: 9 @123644 has 114 MA's), (Start: 11 @123653 has 71 MA's), (17, 123692), (20, 123713), (26, 123788), (28, 123800), (32, 123830), (71, 124112), (75, 124142), (77, 124175), (85, 124238), (94, 124316), (98, 124349), (105, 124379), (123, 124514), (128, 124550), (136, 124598), (142, 124670),

Gene: Moby\_216 Start: 121626, Stop: 122657, Start Num: 9

Candidate Starts for Moby\_216:

(Start: 9 @121626 has 114 MA's), (Start: 11 @121635 has 71 MA's), (17, 121674), (20, 121695), (26, 121770), (28, 121782), (32, 121812), (71, 122094), (75, 122124), (77, 122157), (85, 122220), (94, 122298), (98, 122331), (105, 122361), (123, 122496), (128, 122532), (136, 122580), (142, 122652),

Gene: Moiqah\_215 Start: 121612, Stop: 122634, Start Num: 11

Candidate Starts for Moiqah\_215:

(Start: 9 @121603 has 114 MA's), (Start: 11 @121612 has 71 MA's), (17, 121651), (20, 121672), (26, 121747), (28, 121759), (32, 121789), (71, 122071), (75, 122101), (77, 122134), (85, 122197), (94, 122275), (98, 122308), (105, 122338), (123, 122473), (128, 122509), (136, 122557), (142, 122629),

Gene: Momo\_221 Start: 122741, Stop: 123757, Start Num: 11

Candidate Starts for Momo\_221:

(Start: 9 @122732 has 114 MA's), (Start: 11 @122741 has 71 MA's), (17, 122780), (20, 122801), (26, 122876), (28, 122888), (32, 122918), (71, 123200), (75, 123230), (77, 123263), (85, 123326), (94, 123404), (98, 123437), (105, 123467), (123, 123602), (128, 123638), (142, 123752),

Gene: Montpel\_218 Start: 123832, Stop: 124854, Start Num: 11

Candidate Starts for Montpel\_218:

(Start: 9 @123823 has 114 MA's), (Start: 11 @123832 has 71 MA's), (17, 123871), (20, 123892), (26, 123967), (28, 123979), (32, 124009), (71, 124291), (75, 124321), (77, 124354), (85, 124417), (94, 124495), (98, 124528), (105, 124558), (123, 124693), (128, 124729), (136, 124777), (142, 124849),

Gene: Morizzled23\_217 Start: 122108, Stop: 123124, Start Num: 11

Candidate Starts for Morizzled23\_217:

(Start: 9 @122099 has 114 MA's), (Start: 11 @122108 has 71 MA's), (17, 122147), (20, 122168), (26, 122243), (28, 122255), (32, 122285), (71, 122567), (75, 122597), (77, 122630), (85, 122693), (94, 122771), (98, 122804), (105, 122834), (123, 122969), (128, 123005), (142, 123119),

Gene: Myrna\_204 Start: 119318, Stop: 120304, Start Num: 11

Candidate Starts for Myrna\_204:

(Start: 11 @119318 has 71 MA's), (15, 119336), (16, 119342), (18, 119363), (20, 119378), (26, 119453), (37, 119588), (38, 119591), (72, 119804), (73, 119807), (76, 119828), (77, 119849), (93, 119987), (102, 120035), (110, 120077), (128, 120197), (133, 120224), (135, 120233), (141, 120290),

Gene: Naija\_221 Start: 123435, Stop: 124460, Start Num: 9

Candidate Starts for Naija\_221:

(Start: 9 @123435 has 114 MA's), (Start: 11 @123444 has 71 MA's), (17, 123483), (20, 123504), (26, 123579), (28, 123591), (32, 123621), (71, 123903), (75, 123933), (77, 123966), (85, 124029), (94, 124107), (98, 124140), (105, 124170), (123, 124305), (128, 124341), (142, 124455),

Gene: Napoleon13\_217 Start: 122472, Stop: 123488, Start Num: 11

Candidate Starts for Napoleon13\_217:

(Start: 9 @122463 has 114 MA's), (Start: 11 @122472 has 71 MA's), (17, 122511), (20, 122532), (26, 122607), (28, 122619), (32, 122649), (71, 122931), (75, 122961), (77, 122994), (85, 123057), (94, 123135), (98, 123168), (105, 123198), (123, 123333), (128, 123369), (142, 123483),

Gene: Nappy\_221 Start: 124124, Stop: 125149, Start Num: 9

Candidate Starts for Nappy\_221:

(Start: 9 @124124 has 114 MA's), (Start: 11 @124133 has 71 MA's), (17, 124172), (20, 124193), (26, 124268), (28, 124280), (32, 124310), (71, 124592), (75, 124622), (77, 124655), (85, 124718), (94, 124796), (98, 124829), (105, 124859), (123, 124994), (128, 125030), (142, 125144),

Gene: Naval22\_225 Start: 125221, Stop: 126237, Start Num: 11

Candidate Starts for Naval22\_225:

(Start: 9 @125212 has 114 MA's), (Start: 11 @125221 has 71 MA's), (17, 125260), (20, 125281), (26, 125356), (28, 125368), (32, 125398), (71, 125680), (75, 125710), (77, 125743), (85, 125806), (94, 125884), (98, 125917), (105, 125947), (123, 126082), (128, 126118), (142, 126232),

Gene: NedWong\_219 Start: 123856, Stop: 124881, Start Num: 9

Candidate Starts for NedWong\_219:

(Start: 9 @123856 has 114 MA's), (Start: 11 @123865 has 71 MA's), (17, 123904), (20, 123925), (26, 124000), (28, 124012), (32, 124042), (71, 124324), (75, 124354), (77, 124387), (85, 124450), (94, 124528), (98, 124561), (105, 124591), (123, 124726), (128, 124762), (142, 124876),

Gene: Ngannou\_217 Start: 121714, Stop: 122739, Start Num: 9

Candidate Starts for Ngannou\_217:

(Start: 9 @121714 has 114 MA's), (Start: 11 @121723 has 71 MA's), (17, 121762), (20, 121783), (26, 121858), (28, 121870), (32, 121900), (71, 122182), (75, 122212), (77, 122245), (85, 122308), (94, 122386), (98, 122419), (105, 122449), (123, 122584), (128, 122620), (142, 122734),

Gene: Nidhogg\_221 Start: 124261, Stop: 125286, Start Num: 9

Candidate Starts for Nidhogg\_221:

(Start: 9 @124261 has 114 MA's), (Start: 11 @124270 has 71 MA's), (17, 124309), (20, 124330), (26, 124405), (28, 124417), (32, 124447), (71, 124729), (75, 124759), (77, 124792), (85, 124855), (94, 124933), (98, 124966), (105, 124996), (123, 125131), (128, 125167), (142, 125281),

Gene: NoodleTree\_226 Start: 124156, Stop: 125181, Start Num: 9

Candidate Starts for NoodleTree\_226:

(Start: 9 @124156 has 114 MA's), (Start: 11 @124165 has 71 MA's), (17, 124204), (20, 124225), (26, 124300), (28, 124312), (32, 124342), (71, 124624), (75, 124654), (77, 124687), (85, 124750), (94, 124828), (98, 124861), (105, 124891), (123, 125026), (128, 125062), (142, 125176),

Gene: Norm\_220 Start: 124161, Stop: 125186, Start Num: 9

Candidate Starts for Norm\_220:

(Start: 9 @124161 has 114 MA's), (Start: 11 @124170 has 71 MA's), (17, 124209), (20, 124230), (26, 124305), (28, 124317), (32, 124347), (71, 124629), (75, 124659), (77, 124692), (85, 124755), (94, 124833), (98, 124866), (105, 124896), (123, 125031), (128, 125067), (142, 125181),

Gene: NuevoMundo\_223 Start: 124726, Stop: 125742, Start Num: 11

Candidate Starts for NuevoMundo\_223:

(Start: 9 @124717 has 114 MA's), (Start: 11 @124726 has 71 MA's), (17, 124765), (20, 124786), (26, 124861), (28, 124873), (32, 124903), (71, 125185), (75, 125215), (77, 125248), (85, 125311), (94, 125389), (98, 125422), (105, 125452), (123, 125587), (128, 125623), (142, 125737),

Gene: OrediggerDelux\_216 Start: 124397, Stop: 125413, Start Num: 11

Candidate Starts for OrediggerDelux\_216:

(Start: 9 @124388 has 114 MA's), (Start: 11 @124397 has 71 MA's), (17, 124436), (20, 124457), (26, 124532), (28, 124544), (32, 124574), (71, 124856), (75, 124886), (77, 124919), (85, 124982), (94, 125060), (98, 125093), (105, 125123), (123, 125258), (128, 125294), (142, 125408),

Gene: ParkTD\_219 Start: 123741, Stop: 124757, Start Num: 11

Candidate Starts for ParkTD\_219:

(Start: 9 @123732 has 114 MA's), (Start: 11 @123741 has 71 MA's), (17, 123780), (20, 123801), (26, 123876), (28, 123888), (32, 123918), (71, 124200), (75, 124230), (77, 124263), (85, 124326), (94, 124404), (98, 124437), (105, 124467), (123, 124602), (128, 124638), (142, 124752),

Gene: Patter\_221 Start: 122746, Stop: 123771, Start Num: 9

Candidate Starts for Patter\_221:

(Start: 9 @122746 has 114 MA's), (Start: 11 @122755 has 71 MA's), (17, 122794), (20, 122815), (26, 122890), (28, 122902), (32, 122932), (71, 123214), (75, 123244), (77, 123277), (85, 123340), (94, 123418), (98, 123451), (105, 123481), (123, 123616), (128, 123652), (142, 123766),

Gene: Phabba\_215 Start: 119296, Stop: 120279, Start Num: 11

Candidate Starts for Phabba\_215:

(1, 118633), (3, 118768), (Start: 11 @119296 has 71 MA's), (16, 119320), (18, 119341), (27, 119437), (37, 119566), (38, 119569), (43, 119602), (62, 119719), (64, 119722), (79, 119842), (84, 119884), (96,

119986), (98, 119995), (110, 120052), (119, 120106), (128, 120172), (133, 120199), (135, 120208), (141, 120265),

Gene: PharkleMinkus\_222 Start: 122292, Stop: 123308, Start Num: 11

Candidate Starts for PharkleMinkus\_222:

(Start: 9 @122283 has 114 MA's), (Start: 11 @122292 has 71 MA's), (17, 122331), (20, 122352), (26, 122427), (28, 122439), (32, 122469), (71, 122751), (75, 122781), (77, 122814), (85, 122877), (94, 122955), (98, 122988), (105, 123018), (123, 123153), (128, 123189), (142, 123303),

Gene: Phlegm\_224 Start: 123435, Stop: 124460, Start Num: 9

Candidate Starts for Phlegm\_224:

(Start: 9 @123435 has 114 MA's), (Start: 11 @123444 has 71 MA's), (17, 123483), (20, 123504), (26, 123579), (28, 123591), (32, 123621), (71, 123903), (75, 123933), (77, 123966), (85, 124029), (94, 124107), (98, 124140), (105, 124170), (123, 124305), (128, 124341), (142, 124455),

Gene: Phox\_221 Start: 123394, Stop: 124410, Start Num: 11

Candidate Starts for Phox\_221:

(Start: 9 @123385 has 114 MA's), (Start: 11 @123394 has 71 MA's), (17, 123433), (20, 123454), (26, 123529), (28, 123541), (32, 123571), (71, 123853), (75, 123883), (77, 123916), (85, 123979), (94, 124057), (98, 124090), (105, 124120), (123, 124255), (128, 124291), (142, 124405),

Gene: Phrappuccino\_133 Start: 95976, Stop: 97007, Start Num: 11

Candidate Starts for Phrappuccino\_133:

(Start: 11 @95976 has 71 MA's), (21, 96036), (23, 96060), (26, 96108), (32, 96150), (45, 96288), (55, 96354), (60, 96390), (67, 96426), (68, 96429), (73, 96471), (86, 96594), (98, 96693), (101, 96711), (103, 96717), (108, 96750), (111, 96786), (118, 96822), (132, 96915), (142, 96996),

Gene: Phusco\_218 Start: 122267, Stop: 123292, Start Num: 9

Candidate Starts for Phusco\_218:

(Start: 9 @122267 has 114 MA's), (Start: 11 @122276 has 71 MA's), (17, 122315), (20, 122336), (26, 122411), (28, 122423), (32, 122453), (71, 122735), (75, 122765), (77, 122798), (85, 122861), (94, 122939), (98, 122972), (105, 123002), (123, 123137), (128, 123173), (142, 123287),

Gene: Pier\_221 Start: 124262, Stop: 125287, Start Num: 9

Candidate Starts for Pier\_221:

(Start: 9 @124262 has 114 MA's), (Start: 11 @124271 has 71 MA's), (17, 124310), (20, 124331), (26, 124406), (28, 124418), (32, 124448), (71, 124730), (75, 124760), (77, 124793), (85, 124856), (94, 124934), (98, 124967), (105, 124997), (123, 125132), (128, 125168), (142, 125282),

Gene: Pinkcreek\_204 Start: 121638, Stop: 122663, Start Num: 9

Candidate Starts for Pinkcreek\_204:

(Start: 9 @121638 has 114 MA's), (Start: 11 @121647 has 71 MA's), (17, 121686), (20, 121707), (26, 121782), (28, 121794), (32, 121824), (71, 122106), (75, 122136), (77, 122169), (85, 122232), (94, 122310), (98, 122343), (105, 122373), (123, 122508), (128, 122544), (142, 122658),

Gene: Pio\_228 Start: 125466, Stop: 126491, Start Num: 9

Candidate Starts for Pio\_228:

(Start: 9 @125466 has 114 MA's), (Start: 11 @125475 has 71 MA's), (17, 125514), (20, 125535), (26, 125610), (28, 125622), (32, 125652), (71, 125934), (75, 125964), (77, 125997), (85, 126060), (94, 126138), (98, 126171), (105, 126201), (123, 126336), (128, 126372), (142, 126486),

Gene: Pivoine\_221 Start: 123435, Stop: 124460, Start Num: 9

Candidate Starts for Pivoine\_221:

(Start: 9 @123435 has 114 MA's), (Start: 11 @123444 has 71 MA's), (17, 123483), (20, 123504), (26, 123579), (28, 123591), (32, 123621), (71, 123903), (75, 123933), (77, 123966), (85, 124029), (94, 124107), (98, 124140), (105, 124170), (123, 124305), (128, 124341), (142, 124455),

Gene: Pleione\_224 Start: 124207, Stop: 125223, Start Num: 11

Candidate Starts for Pleione\_224:

(Start: 9 @124198 has 114 MA's), (Start: 11 @124207 has 71 MA's), (17, 124246), (20, 124267), (26, 124342), (28, 124354), (32, 124384), (71, 124666), (75, 124696), (77, 124729), (85, 124792), (94, 124870), (98, 124903), (105, 124933), (123, 125068), (128, 125104), (142, 125218),

Gene: Primadonna\_215 Start: 123105, Stop: 124121, Start Num: 11

Candidate Starts for Primadonna\_215:

(Start: 9 @123096 has 114 MA's), (Start: 11 @123105 has 71 MA's), (17, 123144), (20, 123165), (26, 123240), (28, 123252), (32, 123282), (71, 123564), (75, 123594), (77, 123627), (85, 123690), (94, 123768), (98, 123801), (105, 123831), (123, 123966), (128, 124002), (142, 124116),

Gene: Pupper\_162 Start: 114902, Stop: 115894, Start Num: 14

Candidate Starts for Pupper\_162:

(Start: 14 @114902 has 4 MA's), (22, 114971), (23, 114986), (25, 115004), (26, 115034), (59, 115301), (70, 115346), (77, 115421), (81, 115457), (88, 115535), (94, 115562), (98, 115592), (99, 115595), (104, 115619), (106, 115628), (131, 115802), (134, 115814), (138, 115829), (142, 115886),

Gene: Pupusa\_224 Start: 124771, Stop: 125787, Start Num: 11

Candidate Starts for Pupusa\_224:

(Start: 9 @124762 has 114 MA's), (Start: 11 @124771 has 71 MA's), (17, 124810), (20, 124831), (26, 124906), (28, 124918), (32, 124948), (71, 125230), (75, 125260), (77, 125293), (85, 125356), (94, 125434), (98, 125467), (105, 125497), (123, 125632), (128, 125668), (142, 125782),

Gene: PurduePete\_220 Start: 124426, Stop: 125451, Start Num: 9

Candidate Starts for PurduePete\_220:

(Start: 9 @124426 has 114 MA's), (Start: 11 @124435 has 71 MA's), (17, 124474), (20, 124495), (26, 124570), (28, 124582), (32, 124612), (71, 124894), (75, 124924), (77, 124957), (85, 125020), (94, 125098), (98, 125131), (105, 125161), (123, 125296), (128, 125332), (142, 125446),

Gene: QBert\_212 Start: 121786, Stop: 122811, Start Num: 9

Candidate Starts for QBert\_212:

(Start: 9 @121786 has 114 MA's), (Start: 11 @121795 has 71 MA's), (17, 121834), (20, 121855), (26, 121930), (28, 121942), (32, 121972), (71, 122254), (75, 122284), (77, 122317), (85, 122380), (94, 122458), (98, 122491), (105, 122521), (123, 122656), (128, 122692), (142, 122806),

Gene: Quasimodo\_222 Start: 123077, Stop: 124093, Start Num: 11

Candidate Starts for Quasimodo\_222:

(Start: 9 @123068 has 114 MA's), (Start: 11 @123077 has 71 MA's), (17, 123116), (20, 123137), (26, 123212), (28, 123224), (32, 123254), (71, 123536), (75, 123566), (77, 123599), (85, 123662), (94, 123740), (98, 123773), (105, 123803), (123, 123938), (128, 123974), (142, 124088),

Gene: Rabinovish\_213 Start: 123331, Stop: 124362, Start Num: 9

Candidate Starts for Rabinovish\_213:

(Start: 9 @123331 has 114 MA's), (Start: 11 @123340 has 71 MA's), (17, 123379), (20, 123400), (26, 123475), (28, 123487), (32, 123517), (71, 123799), (75, 123829), (77, 123862), (85, 123925), (94, 124003), (98, 124036), (105, 124066), (123, 124201), (128, 124237), (136, 124285), (142, 124357),

Gene: Rahel\_221 Start: 123170, Stop: 124195, Start Num: 9

Candidate Starts for Rahel\_221:

(Start: 9 @123170 has 114 MA's), (Start: 11 @123179 has 71 MA's), (17, 123218), (20, 123239), (26, 123314), (28, 123326), (32, 123356), (71, 123638), (75, 123668), (77, 123701), (85, 123764), (94, 123842), (98, 123875), (105, 123905), (123, 124040), (128, 124076), (142, 124190),

Gene: RedWattleHog\_87 Start: 79266, Stop: 80351, Start Num: 12

Candidate Starts for RedWattleHog\_87:

(Start: 12 @79266 has 2 MA's), (17, 79302), (20, 79323), (35, 79518), (46, 79608), (49, 79635), (51, 79638), (52, 79659), (53, 79671), (61, 79713), (63, 79722), (65, 79734), (74, 79791), (78, 79836), (81, 79872), (82, 79878), (95, 79995), (97, 80007), (100, 80016), (102, 80025), (108, 80058), (109, 80067), (115, 80112), (124, 80184), (126, 80193), (127, 80211),

Gene: Rizal\_212 Start: 121688, Stop: 122713, Start Num: 9

Candidate Starts for Rizal\_212:

(Start: 9 @121688 has 114 MA's), (Start: 11 @121697 has 71 MA's), (17, 121736), (20, 121757), (26, 121832), (28, 121844), (32, 121874), (71, 122156), (75, 122186), (77, 122219), (85, 122282), (94, 122360), (98, 122393), (105, 122423), (123, 122558), (128, 122594), (142, 122708),

Gene: RoMag\_215 Start: 123469, Stop: 124494, Start Num: 9

Candidate Starts for RoMag\_215:

(Start: 9 @123469 has 114 MA's), (Start: 11 @123478 has 71 MA's), (17, 123517), (20, 123538), (26, 123613), (28, 123625), (32, 123655), (71, 123937), (75, 123967), (77, 124000), (85, 124063), (94, 124141), (98, 124174), (105, 124204), (123, 124339), (128, 124375), (142, 124489),

Gene: Rocha\_217 Start: 122921, Stop: 123937, Start Num: 11

Candidate Starts for Rocha\_217:

(Start: 9 @122912 has 114 MA's), (Start: 11 @122921 has 71 MA's), (17, 122960), (20, 122981), (26, 123056), (28, 123068), (32, 123098), (71, 123380), (75, 123410), (77, 123443), (85, 123506), (94, 123584), (98, 123617), (105, 123647), (123, 123782), (128, 123818), (142, 123932),

Gene: Ronan\_216 Start: 121861, Stop: 122886, Start Num: 9

Candidate Starts for Ronan\_216:

(Start: 9 @121861 has 114 MA's), (Start: 11 @121870 has 71 MA's), (17, 121909), (20, 121930), (26, 122005), (28, 122017), (32, 122047), (71, 122329), (75, 122359), (77, 122392), (85, 122455), (94, 122533), (98, 122566), (105, 122596), (123, 122731), (128, 122767), (142, 122881),

Gene: Roots515\_222 Start: 124977, Stop: 126002, Start Num: 9

Candidate Starts for Roots515\_222:

(Start: 9 @124977 has 114 MA's), (Start: 11 @124986 has 71 MA's), (17, 125025), (20, 125046), (26, 125121), (28, 125133), (32, 125163), (71, 125445), (75, 125475), (77, 125508), (85, 125571), (94, 125649), (98, 125682), (105, 125712), (123, 125847), (128, 125883), (142, 125997),

Gene: SCentae\_161 Start: 115056, Stop: 116048, Start Num: 14

Candidate Starts for SCentae\_161:

(13, 115053), (Start: 14 @115056 has 4 MA's), (22, 115125), (23, 115140), (25, 115158), (26, 115188), (31, 115227), (59, 115455), (70, 115500), (77, 115575), (81, 115611), (88, 115689), (94, 115716), (98, 115746), (99, 115749), (104, 115773), (106, 115782), (131, 115956), (134, 115968), (138, 115983), (142, 116040),

Gene: SVoro\_216 Start: 123780, Stop: 124796, Start Num: 11

Candidate Starts for SVoro\_216:

(Start: 9 @123771 has 114 MA's), (Start: 11 @123780 has 71 MA's), (17, 123819), (20, 123840), (26, 123915), (28, 123927), (32, 123957), (71, 124239), (75, 124269), (77, 124302), (85, 124365), (94,

124443), (98, 124476), (105, 124506), (123, 124641), (128, 124677), (142, 124791),

Gene: Salacia\_220 Start: 123582, Stop: 124598, Start Num: 11

Candidate Starts for Salacia\_220:

(Start: 9 @123573 has 114 MA's), (Start: 11 @123582 has 71 MA's), (17, 123621), (20, 123642), (26, 123717), (28, 123729), (32, 123759), (71, 124041), (75, 124071), (77, 124104), (85, 124167), (94, 124245), (98, 124278), (105, 124308), (123, 124443), (128, 124479), (142, 124593),

Gene: Sauce\_216 Start: 122384, Stop: 123409, Start Num: 9

Candidate Starts for Sauce\_216:

(Start: 9 @122384 has 114 MA's), (Start: 11 @122393 has 71 MA's), (17, 122432), (20, 122453), (26, 122528), (28, 122540), (32, 122570), (71, 122852), (75, 122882), (77, 122915), (85, 122978), (94, 123056), (98, 123089), (105, 123119), (123, 123254), (128, 123290), (142, 123404),

Gene: ScoobyDoobyDoo\_204 Start: 117614, Stop: 118645, Start Num: 11

Candidate Starts for ScoobyDoobyDoo\_204:

(Start: 11 @117614 has 71 MA's), (21, 117677), (24, 117716), (26, 117749), (29, 117770), (37, 117887), (38, 117890), (45, 117932), (49, 117968), (57, 118028), (67, 118076), (69, 118082), (92, 118310), (121, 118475), (122, 118481), (125, 118505), (133, 118562), (135, 118571), (140, 118619),

Gene: ScottMcG\_214 Start: 122475, Stop: 123491, Start Num: 11

Candidate Starts for ScottMcG\_214:

(Start: 9 @122466 has 114 MA's), (Start: 11 @122475 has 71 MA's), (17, 122514), (20, 122535), (26, 122610), (28, 122622), (32, 122652), (71, 122934), (75, 122964), (77, 122997), (85, 123060), (94, 123138), (98, 123171), (105, 123201), (123, 123336), (128, 123372), (142, 123486),

Gene: Sebata\_221 Start: 123900, Stop: 124922, Start Num: 11

Candidate Starts for Sebata\_221:

(Start: 9 @123891 has 114 MA's), (Start: 11 @123900 has 71 MA's), (17, 123939), (20, 123960), (26, 124035), (28, 124047), (32, 124077), (71, 124359), (75, 124389), (77, 124422), (85, 124485), (94, 124563), (98, 124596), (105, 124626), (123, 124761), (128, 124797), (136, 124845), (142, 124917),

Gene: Settecandela\_133 Start: 95976, Stop: 97007, Start Num: 11

Candidate Starts for Settecandela\_133:

(Start: 11 @95976 has 71 MA's), (21, 96036), (23, 96060), (26, 96108), (32, 96150), (45, 96288), (55, 96354), (60, 96390), (67, 96426), (68, 96429), (73, 96471), (86, 96594), (98, 96693), (101, 96711), (103, 96717), (108, 96750), (111, 96786), (118, 96822), (132, 96915), (142, 96996),

Gene: Shaqnato\_211 Start: 122601, Stop: 123623, Start Num: 11

Candidate Starts for Shaqnato\_211:

(Start: 9 @122592 has 114 MA's), (Start: 11 @122601 has 71 MA's), (17, 122640), (20, 122661), (26, 122736), (28, 122748), (32, 122778), (71, 123060), (75, 123090), (77, 123123), (85, 123186), (94, 123264), (98, 123297), (105, 123327), (123, 123462), (128, 123498), (136, 123546), (142, 123618),

Gene: Shelob\_221 Start: 125332, Stop: 126357, Start Num: 9

Candidate Starts for Shelob\_221:

(Start: 9 @125332 has 114 MA's), (Start: 11 @125341 has 71 MA's), (17, 125380), (20, 125401), (26, 125476), (28, 125488), (32, 125518), (71, 125800), (75, 125830), (77, 125863), (85, 125926), (94, 126004), (98, 126037), (105, 126067), (123, 126202), (128, 126238), (142, 126352),

Gene: ShiaLabeouf\_217 Start: 122378, Stop: 123403, Start Num: 9

Candidate Starts for ShiaLabeouf\_217:

(Start: 9 @122378 has 114 MA's), (Start: 11 @122387 has 71 MA's), (17, 122426), (20, 122447), (26, 122522), (28, 122534), (32, 122564), (71, 122846), (75, 122876), (77, 122909), (85, 122972), (94, 123050), (98, 123083), (105, 123113), (123, 123248), (128, 123284), (142, 123398),

Gene: Shifa\_197 Start: 121950, Stop: 122981, Start Num: 9

Candidate Starts for Shifa\_197:

(Start: 9 @121950 has 114 MA's), (Start: 11 @121959 has 71 MA's), (17, 121998), (20, 122019), (26, 122094), (28, 122106), (32, 122136), (71, 122418), (75, 122448), (77, 122481), (85, 122544), (94, 122622), (98, 122655), (105, 122685), (123, 122820), (128, 122856), (136, 122904), (142, 122976),

Gene: Shnickers\_218 Start: 122442, Stop: 123467, Start Num: 9

Candidate Starts for Shnickers\_218:

(Start: 9 @122442 has 114 MA's), (Start: 11 @122451 has 71 MA's), (17, 122490), (20, 122511), (26, 122586), (28, 122598), (32, 122628), (71, 122910), (75, 122940), (77, 122973), (85, 123036), (94, 123114), (98, 123147), (105, 123177), (123, 123312), (128, 123348), (142, 123462),

Gene: Shrimp\_222 Start: 124499, Stop: 125524, Start Num: 9

Candidate Starts for Shrimp\_222:

(Start: 9 @124499 has 114 MA's), (Start: 11 @124508 has 71 MA's), (17, 124547), (20, 124568), (26, 124643), (28, 124655), (32, 124685), (71, 124967), (75, 124997), (77, 125030), (85, 125093), (94, 125171), (98, 125204), (105, 125234), (123, 125369), (128, 125405), (142, 125519),

Gene: SilverDipper\_224 Start: 124000, Stop: 125016, Start Num: 11

Candidate Starts for SilverDipper\_224:

(Start: 9 @123991 has 114 MA's), (Start: 11 @124000 has 71 MA's), (17, 124039), (20, 124060), (26, 124135), (28, 124147), (32, 124177), (71, 124459), (75, 124489), (77, 124522), (85, 124585), (94, 124663), (98, 124696), (105, 124726), (123, 124861), (128, 124897), (142, 125011),

Gene: Skog\_222 Start: 144522, Stop: 145520, Start Num: 14

Candidate Starts for Skog\_222:

(2, 143898), (5, 144378), (Start: 14 @144522 has 4 MA's), (22, 144591), (23, 144609), (26, 144657), (36, 144774), (37, 144792), (39, 144807), (44, 144831), (48, 144849), (56, 144909), (70, 144969), (76, 145026), (81, 145083), (98, 145218), (104, 145245), (113, 145308), (114, 145311), (120, 145341), (129, 145419), (138, 145455), (142, 145512),

Gene: SmallFry\_220 Start: 122536, Stop: 123561, Start Num: 9

Candidate Starts for SmallFry\_220:

(Start: 9 @122536 has 114 MA's), (Start: 11 @122545 has 71 MA's), (17, 122584), (20, 122605), (26, 122680), (28, 122692), (32, 122722), (71, 123004), (75, 123034), (77, 123067), (85, 123130), (94, 123208), (98, 123241), (105, 123271), (123, 123406), (128, 123442), (142, 123556),

Gene: Spec\_215 Start: 122724, Stop: 123740, Start Num: 11

Candidate Starts for Spec\_215:

(Start: 9 @122715 has 114 MA's), (Start: 11 @122724 has 71 MA's), (17, 122763), (20, 122784), (26, 122859), (28, 122871), (32, 122901), (71, 123183), (75, 123213), (77, 123246), (85, 123309), (94, 123387), (98, 123420), (105, 123450), (123, 123585), (128, 123621), (142, 123735),

Gene: Specks\_224 Start: 123840, Stop: 124865, Start Num: 9

Candidate Starts for Specks\_224:

(Start: 9 @123840 has 114 MA's), (Start: 11 @123849 has 71 MA's), (17, 123888), (20, 123909), (26, 123984), (28, 123996), (32, 124026), (71, 124308), (75, 124338), (77, 124371), (85, 124434), (94, 124512), (98, 124545), (105, 124575), (123, 124710), (128, 124746), (142, 124860),

Gene: Sprinklers\_218 Start: 123091, Stop: 124113, Start Num: 11

Candidate Starts for Sprinklers\_218:

(Start: 9 @123082 has 114 MA's), (Start: 11 @123091 has 71 MA's), (17, 123130), (20, 123151), (26, 123226), (28, 123238), (32, 123268), (71, 123550), (75, 123580), (77, 123613), (85, 123676), (94, 123754), (98, 123787), (105, 123817), (123, 123952), (128, 123988), (136, 124036), (142, 124108),

Gene: Spud\_214 Start: 122806, Stop: 123831, Start Num: 9

Candidate Starts for Spud\_214:

(Start: 9 @122806 has 114 MA's), (Start: 11 @122815 has 71 MA's), (17, 122854), (20, 122875), (26, 122950), (28, 122962), (32, 122992), (71, 123274), (75, 123304), (77, 123337), (85, 123400), (94, 123478), (98, 123511), (105, 123541), (123, 123676), (128, 123712), (142, 123826),

Gene: SrishMeg2525\_217 Start: 123958, Stop: 124983, Start Num: 9

Candidate Starts for SrishMeg2525\_217:

(Start: 9 @123958 has 114 MA's), (Start: 11 @123967 has 71 MA's), (17, 124006), (20, 124027), (26, 124102), (28, 124114), (32, 124144), (71, 124426), (75, 124456), (77, 124489), (85, 124552), (94, 124630), (98, 124663), (105, 124693), (123, 124828), (128, 124864), (142, 124978),

Gene: StephanieG\_216 Start: 123992, Stop: 125017, Start Num: 9

Candidate Starts for StephanieG\_216:

(Start: 9 @123992 has 114 MA's), (Start: 11 @124001 has 71 MA's), (17, 124040), (20, 124061), (26, 124136), (28, 124148), (32, 124178), (71, 124460), (75, 124490), (77, 124523), (85, 124586), (94, 124664), (98, 124697), (105, 124727), (123, 124862), (128, 124898), (142, 125012),

Gene: Stormageddon\_84 Start: 79247, Stop: 80332, Start Num: 12

Candidate Starts for Stormageddon\_84:

(Start: 11 @79244 has 71 MA's), (Start: 12 @79247 has 2 MA's), (17, 79283), (20, 79304), (35, 79499), (46, 79589), (49, 79616), (51, 79619), (52, 79640), (53, 79652), (61, 79694), (63, 79703), (65, 79715), (74, 79772), (78, 79817), (81, 79853), (82, 79859), (95, 79976), (97, 79988), (100, 79997), (102, 80006), (108, 80039), (109, 80048), (115, 80093), (124, 80165), (126, 80174), (127, 80192),

Gene: Stubby\_204 Start: 121850, Stop: 122872, Start Num: 11

Candidate Starts for Stubby\_204:

(Start: 9 @121841 has 114 MA's), (Start: 11 @121850 has 71 MA's), (17, 121889), (20, 121910), (26, 121985), (28, 121997), (32, 122027), (71, 122309), (75, 122339), (77, 122372), (85, 122435), (94, 122513), (98, 122546), (105, 122576), (123, 122711), (128, 122747), (136, 122795), (142, 122867),

Gene: StubbySaigey\_225 Start: 123525, Stop: 124550, Start Num: 9

Candidate Starts for StubbySaigey\_225:

(Start: 9 @123525 has 114 MA's), (Start: 11 @123534 has 71 MA's), (17, 123573), (20, 123594), (26, 123669), (28, 123681), (32, 123711), (71, 123993), (75, 124023), (77, 124056), (85, 124119), (94, 124197), (98, 124230), (105, 124260), (123, 124395), (128, 124431), (142, 124545),

Gene: Substance289\_217 Start: 122584, Stop: 123609, Start Num: 9

Candidate Starts for Substance289\_217:

(Start: 9 @122584 has 114 MA's), (Start: 11 @122593 has 71 MA's), (17, 122632), (20, 122653), (26, 122728), (28, 122740), (32, 122770), (71, 123052), (75, 123082), (77, 123115), (85, 123178), (94, 123256), (98, 123289), (105, 123319), (123, 123454), (128, 123490), (142, 123604),

Gene: Tainan\_221 Start: 122868, Stop: 123884, Start Num: 11

Candidate Starts for Tainan\_221:

(Start: 9 @122859 has 114 MA's), (Start: 11 @122868 has 71 MA's), (17, 122907), (20, 122928), (26, 123003), (28, 123015), (32, 123045), (71, 123327), (75, 123357), (77, 123390), (85, 123453), (94,

123531), (98, 123564), (105, 123594), (123, 123729), (128, 123765), (142, 123879),

Gene: Teardrop\_217 Start: 122038, Stop: 123063, Start Num: 9

Candidate Starts for Teardrop\_217:

(Start: 9 @122038 has 114 MA's), (Start: 11 @122047 has 71 MA's), (17, 122086), (20, 122107), (26, 122182), (28, 122194), (32, 122224), (71, 122506), (75, 122536), (77, 122569), (85, 122632), (94, 122710), (98, 122743), (105, 122773), (123, 122908), (128, 122944), (142, 123058),

Gene: TinyTim\_218 Start: 122819, Stop: 123844, Start Num: 9

Candidate Starts for TinyTim\_218:

(Start: 9 @122819 has 114 MA's), (Start: 11 @122828 has 71 MA's), (17, 122867), (20, 122888), (26, 122963), (28, 122975), (32, 123005), (71, 123287), (75, 123317), (77, 123350), (85, 123413), (94, 123491), (98, 123524), (105, 123554), (123, 123689), (128, 123725), (142, 123839),

Gene: Tonenili\_242 Start: 128649, Stop: 129665, Start Num: 11

Candidate Starts for Tonenili\_242:

(Start: 9 @128640 has 114 MA's), (Start: 11 @128649 has 71 MA's), (20, 128709), (28, 128796), (32, 128826), (64, 129066), (71, 129108), (75, 129138), (77, 129171), (85, 129234), (98, 129345), (105, 129375), (123, 129510), (128, 129546), (142, 129660),

Gene: Tortoise16\_218 Start: 123281, Stop: 124306, Start Num: 9

Candidate Starts for Tortoise16\_218:

(Start: 9 @123281 has 114 MA's), (Start: 11 @123290 has 71 MA's), (17, 123329), (20, 123350), (26, 123425), (28, 123437), (32, 123467), (71, 123749), (75, 123779), (77, 123812), (85, 123875), (94, 123953), (98, 123986), (105, 124016), (123, 124151), (128, 124187), (142, 124301),

Gene: Trinitium\_216 Start: 121573, Stop: 122598, Start Num: 9

Candidate Starts for Trinitium\_216:

(Start: 9 @121573 has 114 MA's), (Start: 11 @121582 has 71 MA's), (17, 121621), (20, 121642), (26, 121717), (28, 121729), (32, 121759), (71, 122041), (75, 122071), (77, 122104), (85, 122167), (94, 122245), (98, 122278), (105, 122308), (123, 122443), (128, 122479), (142, 122593),

Gene: Turret\_213 Start: 121155, Stop: 122180, Start Num: 9

Candidate Starts for Turret\_213:

(Start: 9 @121155 has 114 MA's), (Start: 11 @121164 has 71 MA's), (17, 121203), (20, 121224), (26, 121299), (28, 121311), (32, 121341), (71, 121623), (75, 121653), (77, 121686), (85, 121749), (94, 121827), (98, 121860), (105, 121890), (123, 122025), (128, 122061), (142, 122175),

Gene: Tyke\_218 Start: 124648, Stop: 125673, Start Num: 9

Candidate Starts for Tyke\_218:

(Start: 9 @124648 has 114 MA's), (Start: 11 @124657 has 71 MA's), (17, 124696), (20, 124717), (26, 124792), (28, 124804), (32, 124834), (71, 125116), (75, 125146), (77, 125179), (85, 125242), (94, 125320), (98, 125353), (105, 125383), (123, 125518), (128, 125554), (142, 125668),

Gene: ValleyTerrace\_221 Start: 122732, Stop: 123757, Start Num: 9

Candidate Starts for ValleyTerrace\_221:

(Start: 9 @122732 has 114 MA's), (Start: 11 @122741 has 71 MA's), (17, 122780), (20, 122801), (26, 122876), (28, 122888), (32, 122918), (71, 123200), (75, 123230), (77, 123263), (85, 123326), (94, 123404), (98, 123437), (105, 123467), (123, 123602), (128, 123638), (142, 123752),

Gene: Vortrix\_240 Start: 127436, Stop: 128452, Start Num: 11

Candidate Starts for Vortrix\_240:

(Start: 9 @127427 has 114 MA's), (Start: 11 @127436 has 71 MA's), (20, 127496), (28, 127583), (32, 127613), (64, 127853), (71, 127895), (75, 127925), (77, 127958), (85, 128021), (94, 128099), (98, 128132), (105, 128162), (123, 128297), (128, 128333), (142, 128447),

Gene: Wally\_218 Start: 122716, Stop: 123741, Start Num: 9

Candidate Starts for Wally\_218:

(Start: 9 @122716 has 114 MA's), (Start: 11 @122725 has 71 MA's), (17, 122764), (20, 122785), (26, 122860), (28, 122872), (32, 122902), (71, 123184), (75, 123214), (77, 123247), (85, 123310), (94, 123388), (98, 123421), (105, 123451), (123, 123586), (128, 123622), (142, 123736),

Gene: Willis\_221 Start: 123627, Stop: 124643, Start Num: 11

Candidate Starts for Willis\_221:

(Start: 9 @123618 has 114 MA's), (Start: 11 @123627 has 71 MA's), (17, 123666), (20, 123687), (26, 123762), (28, 123774), (32, 123804), (71, 124086), (75, 124116), (77, 124149), (85, 124212), (94, 124290), (98, 124323), (105, 124353), (123, 124488), (128, 124524), (142, 124638),

Gene: Yassified\_217 Start: 123068, Stop: 124093, Start Num: 9

Candidate Starts for Yassified\_217:

(Start: 9 @123068 has 114 MA's), (Start: 11 @123077 has 71 MA's), (17, 123116), (20, 123137), (26, 123212), (28, 123224), (32, 123254), (71, 123536), (75, 123566), (77, 123599), (85, 123662), (94, 123740), (98, 123773), (105, 123803), (123, 123938), (128, 123974), (142, 124088),

Gene: YemiJoy2021\_221 Start: 124386, Stop: 125411, Start Num: 9

Candidate Starts for YemiJoy2021\_221:

(Start: 9 @124386 has 114 MA's), (Start: 11 @124395 has 71 MA's), (17, 124434), (20, 124455), (26, 124530), (28, 124542), (32, 124572), (71, 124854), (75, 124884), (77, 124917), (85, 124980), (94, 125058), (98, 125091), (105, 125121), (123, 125256), (128, 125292), (142, 125406),

Gene: YoungMoneyMata\_219 Start: 123209, Stop: 124225, Start Num: 11

Candidate Starts for YoungMoneyMata\_219:

(Start: 9 @123200 has 114 MA's), (Start: 11 @123209 has 71 MA's), (17, 123248), (20, 123269), (26, 123344), (28, 123356), (32, 123386), (71, 123668), (75, 123698), (77, 123731), (85, 123794), (94, 123872), (98, 123905), (105, 123935), (123, 124070), (128, 124106), (142, 124220),

Gene: Yucca\_220 Start: 124378, Stop: 125403, Start Num: 9

Candidate Starts for Yucca\_220:

(Start: 9 @124378 has 114 MA's), (Start: 11 @124387 has 71 MA's), (17, 124426), (20, 124447), (26, 124522), (28, 124534), (32, 124564), (71, 124846), (75, 124876), (77, 124909), (85, 124972), (94, 125050), (98, 125083), (105, 125113), (123, 125248), (128, 125284), (142, 125398),

Gene: Zalkecks\_219 Start: 123447, Stop: 124472, Start Num: 9

Candidate Starts for Zalkecks\_219:

(Start: 9 @123447 has 114 MA's), (Start: 11 @123456 has 71 MA's), (17, 123495), (20, 123516), (26, 123591), (28, 123603), (32, 123633), (71, 123915), (75, 123945), (77, 123978), (85, 124041), (94, 124119), (98, 124152), (105, 124182), (123, 124317), (128, 124353), (142, 124467),

Gene: Zeenon\_222 Start: 124018, Stop: 125043, Start Num: 9

Candidate Starts for Zeenon\_222:

(Start: 9 @124018 has 114 MA's), (Start: 11 @124027 has 71 MA's), (17, 124066), (20, 124087), (26, 124162), (28, 124174), (32, 124204), (71, 124486), (75, 124516), (77, 124549), (85, 124612), (94, 124690), (98, 124723), (105, 124753), (123, 124888), (128, 124924), (142, 125038),

Gene: ZygoTaiga\_217 Start: 124638, Stop: 125663, Start Num: 9

Candidate Starts for ZygoTaiga\_217:

(Start: 9 @124638 has 114 MA's), (Start: 11 @124647 has 71 MA's), (17, 124686), (20, 124707), (26, 124782), (28, 124794), (32, 124824), (71, 125106), (75, 125136), (77, 125169), (85, 125232), (94, 125310), (98, 125343), (105, 125373), (123, 125508), (128, 125544), (142, 125658),