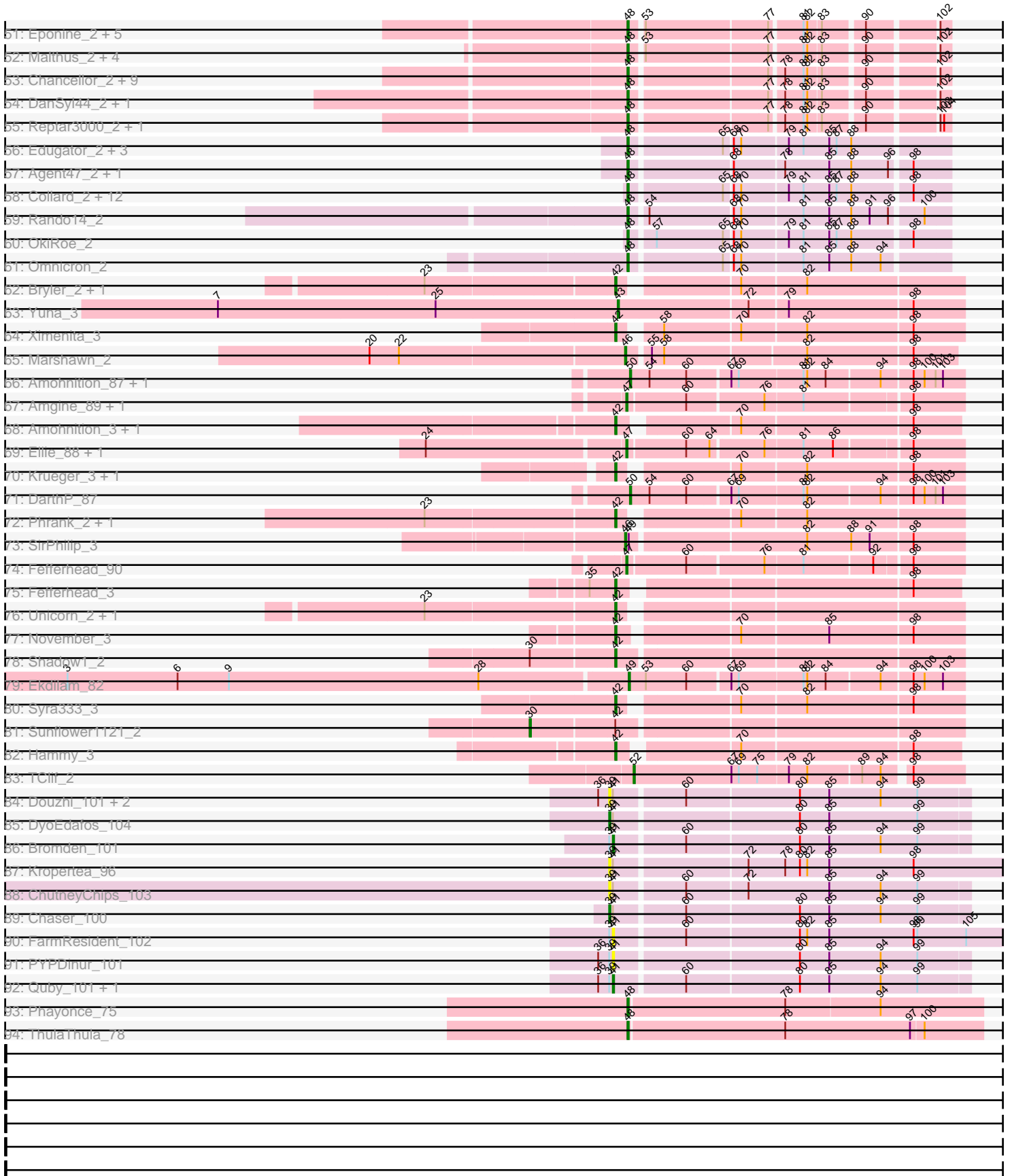


Pham 294427



Note: Tracks are now grouped by subcluster and scaled. Switching in subcluster is indicated by changes in track color. Track scale is now set by default to display the region 30 bp upstream of start 1 to 30 bp downstream of the last possible start. If this default region is judged to be packed too tightly with annotated starts, the track will be further scaled to only show that region of the ORF with annotated starts. This action will be indicated by adding "Zoomed" to the title. For starts, yellow indicates the location of called starts comprised solely of Glimmer/GeneMark auto-annotations, green indicates the location of called starts with at least 1 manual gene annotation.

Pham 294427 Report

This analysis was run 04/18/26 on database version 643.

Pham number 294427 has 213 members, 26 are drafts.

Phages represented in each track:

- Track 1 : Terror_60, Taheera_60
- Track 2 : Paito_66
- Track 3 : Pace1224_68
- Track 4 : Oscar_2
- Track 5 : Spock_3, Capricorn_3, Belladonna_3, Durfee_3, Blizzard_3, ShiaSurprise_3, Homura_3, Boiiii_3, BGIlluviae_3, Topper_3, Twitch_3, Piatt_3, Dalmuri_3, Lunahalos_3, BEEST_3, Llorens_3, Jarvi_3, Asayake_3, Hyperbowlee_3, Jeckyll_3, Rosmarinus_3, Peel_3, CREW_3, Padfoot_3, Inky_3, CaseJules_3
- Track 6 : Megsy_3, Prithvi_3, LindNT_3, TreyKay_3, MacKat_3, YoureAdopted_3, TaiwanKao_3, Clipper_3, MeaningOfLife_3, BaghaKamala_3
- Track 7 : Atiba_3, Tachez_3
- Track 8 : Murucutumbu_3
- Track 9 : Ganymede_3, Adonis_3, CallaLilly_3, QuincyRose_3, Zavala_3
- Track 10 : JAWS_3, BarrelRoll_3, Anaya_3, Adephagia_3, Zabiza_3, Padpat_3, ActinUp_3, HedwigODU_3, Emerson_3, Slimphazie_3, Jayhawk_3, Rapunzel97_3, Ramen_3
- Track 11 : TruffulaTree_3
- Track 12 : Pisa4_3, Pisa1_3
- Track 13 : Ageofdapage_3
- Track 14 : LeMond_2, KiSi_2
- Track 15 : AlishaPH_3
- Track 16 : Devera_3, Dole_3, Illumine_3
- Track 17 : Chavito_3
- Track 18 : Beezoo_3, Geraldini_3
- Track 19 : Angelica_3, Apocalypse_3, Sulley_3
- Track 20 : DartGoblin_3, Bella96_3
- Track 21 : Urkel_3, DrHayes_3, Anma_3, TiniBug_3, SamuelLPlaqson_3
- Track 22 : Dartin_3, Niklas_3, McMater_3, Shaobing_3, Richo_3
- Track 23 : Scarlett_2
- Track 24 : Curiosium_3
- Track 25 : Chris_2
- Track 26 : Pokerus_3
- Track 27 : Tiri_3
- Track 28 : CheetoDust_3
- Track 29 : Validus_4
- Track 30 : LaterM_3, Stinson_3
- Track 31 : Bern_3

- Track 32 : CrimD_3
- Track 33 : Veliki_3
- Track 34 : Guanica15_3, Yunkel11_3
- Track 35 : TingHuaYa_3, LastHope_3
- Track 36 : Joy99_3
- Track 37 : Nibb_2
- Track 38 : Deby_3
- Track 39 : MarkPhew_2
- Track 40 : Efra2_3
- Track 41 : Peanam_3
- Track 42 : Mynx_3
- Track 43 : Pharb_89
- Track 44 : MacnCheese_90
- Track 45 : Pixie_88, TBond007_85
- Track 46 : ShedlockHolmes_91
- Track 47 : Hurricane_89
- Track 48 : Lea83_89
- Track 49 : Keshu_91
- Track 50 : TribbleTrouble_91
- Track 51 : Eponine_2, Y10_02, Wintermute_2, Fionnbharth_2, Y2_02, JF1_2
- Track 52 : Malthus_2, Kraw_2, Juliette_2, YasnayaPolyana_2, Ruthiejr_2
- Track 53 : Chancellor_2, Cheetobro_2, Patt_2, MissDaisy_2, Qhanda_2, Taquito_2, OmniCritical_2, Slarp_2, Mitti_2, SamScheppers_2
- Track 54 : DanSyl44_2, Lebo14_2
- Track 55 : Reptar3000_2, Bobquesha_2
- Track 56 : Edugator_2, AlleyCat_2, Psycho_2, Dadosky_2
- Track 57 : Agent47_2, InvictusManeo_2
- Track 58 : Collard_2, Waterfoul_2, Heftyboy_2, Paola_2, Thyatira_2, Gengar_2, SoSeph_2, Guillsminger_2, BananenDer11_2, Feyre_2, Miryou_2, Leston_2, DoubleChamp_2
- Track 59 : Rando14_2
- Track 60 : OkiRoe_2
- Track 61 : Omnicron_2
- Track 62 : Bryler_2, Cain_2
- Track 63 : Yuna_3
- Track 64 : Ximenita_3
- Track 65 : Marshawn_2
- Track 66 : Amohnition_87, Hammy_87
- Track 67 : Amgine_89, Lavahound_89
- Track 68 : Amohnition_3, DarthP_3
- Track 69 : Ellie_88, Applecrisp_87
- Track 70 : Krueger_3, Tigress9_3
- Track 71 : DarthP_87
- Track 72 : Phrank_2, Tierra_2
- Track 73 : SirPhilip_3
- Track 74 : Fefferhead_90
- Track 75 : Fefferhead_3
- Track 76 : Unicorn_2, PhelpsODU_2
- Track 77 : November_3
- Track 78 : Shadow1_2
- Track 79 : Ekdilam_82
- Track 80 : Syra333_3
- Track 81 : Sunflower1121_2

- Track 82 : Hammy_3
- Track 83 : TClif_2
- Track 84 : Douzhi_101, BrainDrainer_102, Sheng711_102
- Track 85 : DyoEdafos_104
- Track 86 : Bromden_101
- Track 87 : Kropertea_96
- Track 88 : ChutneyChips_103
- Track 89 : Chaser_100
- Track 90 : FarmResident_102
- Track 91 : PYPDinur_101
- Track 92 : Quby_101, Douge_101
- Track 93 : Phayonce_75
- Track 94 : ThulaThula_78

Summary of Final Annotations (See graph section above for start numbers):

The start number called the most often in the published annotations is 37, it was called in 88 of the 187 non-draft genes in the pham.

Genes that call this "Most Annotated" start:

- ActinUp_3, Adephagia_3, Adonis_3, Ageofdapage_3, AlishaPH_3, Anaya_3, Angelica_3, Anma_3, Apocalypse_3, Asayake_3, Atiba_3, BEEST_3, BGIlluviae_3, BaghaKamala_3, BarrelRoll_3, Beezoo_3, Bella96_3, Belladonna_3, Bern_3, Blizzard_3, Boiiii_3, CREW_3, CallaLilly_3, Capricorn_3, CaseJules_3, CheetoDust_3, Clipper_3, CrimD_3, Curiosium_3, Dalmuri_3, DartGoblin_3, Deby_3, Devera_3, Dole_3, DrHayes_3, Durfee_3, Efra2_3, Emerson_3, Ganymede_3, Geraldini_3, Guanica15_3, HedwigODU_3, Homura_3, Hyperbowlee_3, Illumine_3, Inky_3, JAWS_3, Jarvi_3, Jayhawk_3, Jeckyll_3, Joy99_3, LastHope_3, LaterM_3, LindNT_3, Llorens_3, Lunahalos_3, MacKat_3, MeaningOfLife_3, Megsy_3, Murucutumbu_3, Mynx_3, Padfoot_3, Padpat_3, Peel_3, Piatt_3, Pokerus_3, Prithvi_3, QuincyRose_3, Ramen_3, Rapunzel97_3, Rosmarinus_3, SamuelLPlaqson_3, ShiaSurprise_3, Slimphazie_3, Spock_3, Stinson_3, Sulley_3, Tachez_3, TaiwanKao_3, TingHuaYa_3, TiniBug_3, Tiri_3, Topper_3, TreyKay_3, TruffulaTree_3, Twitch_3, Urkel_3, Veliki_3, YoureAdopted_3, Yunkel11_3, Zabiza_3, Zavala_3,

Genes that have the "Most Annotated" start but do not call it:

- Chavito_3,

Genes that do not have the "Most Annotated" start:

- Agent47_2, AlleyCat_2, Amgine_89, Amohnition_3, Amohnition_87, Applecrisp_87, BananenDer11_2, Bobquesha_2, BrainDrainer_102, Bromden_101, Bryler_2, Cain_2, Chancellor_2, Chaser_100, Cheetobro_2, Chris_2, ChutneyChips_103, Collard_2, Dadosky_2, DanSyl44_2, DarthP_3, DarthP_87, Dartin_3, DoubleChamp_2, Douge_101, Douzhi_101, DyoEdafos_104, Edugator_2, Ekdilam_82, Ellie_88, Eponine_2, FarmResident_102, Fefferhead_3, Fefferhead_90, Feyre_2, Fionnbharth_2, Gengar_2, Guillsminger_2, Hammy_3, Hammy_87, Heftyboy_2, Hurricane_89, InvictusManeo_2, JF1_2, Juliette_2, Keshu_91, KiSi_2, Kraw_2, Kropertea_96, Krueger_3, Lavahound_89, LeMond_2, Lea83_89, Lebo14_2, Leston_2, MacnCheese_90, Malthus_2, MarkPhew_2, Marshawn_2, McMater_3,

Miryou_2, MissDaisy_2, Mitti_2, Nibb_2, Niklas_3, November_3, OkiRoe_2, OmniCritical_2, Omnicron_2, Oscar_2, PYPDinur_101, Pace1224_68, Paito_66, Paola_2, Patt_2, Peanam_3, Pharb_89, Phayonce_75, PhelpsODU_2, Phrank_2, Pisa1_3, Pisa4_3, Pixie_88, Psycho_2, Qhanda_2, Quby_101, Rando14_2, Reptar3000_2, Richo_3, Ruthiejr_2, SamScheppers_2, Scarlett_2, Shadow1_2, Shaobing_3, ShedlockHolmes_91, Sheng711_102, SirPhilip_3, Slarp_2, SoSeph_2, Sunflower1121_2, Syra333_3, TBond007_85, TClif_2, Taheera_60, Taquito_2, Terror_60, ThulaThula_78, Thyatira_2, Tierra_2, Tigress9_3, TribbleTrouble_91, Unicorn_2, Validus_4, Waterfoul_2, Wintermute_2, Ximenita_3, Y10_02, Y2_02, YasnayaPolyana_2, Yuna_3,

Summary by start number:

Start 30:

- Found in 2 of 213 (0.9%) of genes in pham
- Manual Annotations of this start: 1 of 187
- Called 50.0% of time when present
- Phage (with cluster) where this start called: Sunflower1121_2 (K6),

Start 32:

- Found in 2 of 213 (0.9%) of genes in pham
- Manual Annotations of this start: 2 of 187
- Called 100.0% of time when present
- Phage (with cluster) where this start called: Chris_2 (K1), MarkPhew_2 (K1),

Start 34:

- Found in 2 of 213 (0.9%) of genes in pham
- Manual Annotations of this start: 1 of 187
- Called 50.0% of time when present
- Phage (with cluster) where this start called: Nibb_2 (K1),

Start 37:

- Found in 93 of 213 (43.7%) of genes in pham
- Manual Annotations of this start: 88 of 187
- Called 98.9% of time when present
- Phage (with cluster) where this start called: ActinUp_3 (K1), Adephagia_3 (K1), Adonis_3 (K1), Ageofdapage_3 (K1), AlishaPH_3 (K1), Anaya_3 (K1), Angelica_3 (K1), Anma_3 (K1), Apocalypse_3 (K1), Asayake_3 (K1), Atiba_3 (K1), BEEST_3 (K1), BGlluviae_3 (K1), BaghaKamala_3 (K1), BarrelRoll_3 (K1), Beezoo_3 (K1), Bella96_3 (K1), Belladonna_3 (K1), Bern_3 (K1), Blizzard_3 (K1), Boiii_3 (K1), CREW_3 (K1), CallaLilly_3 (K1), Capricorn_3 (K1), CaseJules_3 (K1), CheetoDust_3 (K1), Clipper_3 (K1), CrimD_3 (K1), Curiosium_3 (K1), Dalmuri_3 (K1), DartGoblin_3 (K1), Deby_3 (K1), Devera_3 (K1), Dole_3 (K1), DrHayes_3 (K1), Durfee_3 (K1), Efra2_3 (K1), Emerson_3 (K1), Ganymede_3 (K1), Geraldini_3 (K1), Guanica15_3 (K1), HedwigODU_3 (K1), Homura_3 (K1), Hyperbowlee_3 (K1), Illumine_3 (K1), Inky_3 (K1), JAWS_3 (K1), Jarvi_3 (K1), Jayhawk_3 (K1), Jeckyll_3 (K1), Joy99_3 (K1), LastHope_3 (K1), LaterM_3 (K1), LindNT_3 (K1), Llorens_3 (K1), Lunahalos_3 (K1), MacKat_3 (K1), MeaningOfLife_3 (K1), Megsy_3 (K1), Murucutumbu_3 (K1), Mynx_3 (K1), Padfoot_3 (K1), Padpat_3 (K1), Peel_3 (K1), Piatt_3 (K1), Pokerus_3 (K1), Prithvi_3 (K1), QuincyRose_3 (K1), Ramen_3 (K1), Rapunzel97_3 (K1), Rosmarinus_3 (K1), SamuelLPlaqsom_3 (K1), ShiaSurprise_3 (K1), Slimphazie_3 (K1), Spock_3 (K1), Stinson_3 (K1), Sulley_3 (K1), Tachez_3 (K1), TaiwanKao_3 (K1), TingHuaYa_3 (K1), TiniBug_3 (K1), Tiri_3 (K1), Topper_3 (K1), TreyKay_3 (K1),

TruffulaTree_3 (K1), Twitch_3 (K1), Urkel_3 (K1), Veliki_3 (K1), YoureAdopted_3 (K1), Yunkel11_3 (K1), Zabiza_3 (K1), Zavala_3 (K1),

Start 39:

- Found in 12 of 213 (5.6%) of genes in pham
- Manual Annotations of this start: 2 of 187
- Called 58.3% of time when present
- Phage (with cluster) where this start called: BrainDrainer_102 (L4), Chaser_100 (L4), ChutneyChips_103 (L4), Douzhi_101 (L4), DyoEdafos_104 (L4), Kropertea_96 (L4), Sheng711_102 (L4),

Start 40:

- Found in 2 of 213 (0.9%) of genes in pham
- Manual Annotations of this start: 1 of 187
- Called 100.0% of time when present
- Phage (with cluster) where this start called: Chavito_3 (K1), Validus_4 (K1),

Start 41:

- Found in 12 of 213 (5.6%) of genes in pham
- Manual Annotations of this start: 2 of 187
- Called 41.7% of time when present
- Phage (with cluster) where this start called: Bromden_101 (L4), Douge_101 (L4), FarmResident_102 (L4), PYPDinur_101 (L4), Quby_101 (L4),

Start 42:

- Found in 17 of 213 (8.0%) of genes in pham
- Manual Annotations of this start: 15 of 187
- Called 94.1% of time when present
- Phage (with cluster) where this start called: Amohnition_3 (K6), Bryler_2 (K6), Cain_2 (K6), DarthP_3 (K6), Fefferhead_3 (K6), Hammy_3 (K6), Krueger_3 (K6), November_3 (K6), PhelpsODU_2 (K6), Phrank_2 (K6), Shadow1_2 (K6), Syra333_3 (K6), Tierra_2 (K6), Tigress9_3 (K6), Unicorn_2 (K6), Ximenita_3 (K6),

Start 43:

- Found in 1 of 213 (0.5%) of genes in pham
- Manual Annotations of this start: 1 of 187
- Called 100.0% of time when present
- Phage (with cluster) where this start called: Yuna_3 (K6),

Start 44:

- Found in 4 of 213 (1.9%) of genes in pham
- Manual Annotations of this start: 4 of 187
- Called 100.0% of time when present
- Phage (with cluster) where this start called: KiSi_2 (K1), LeMond_2 (K1), Oscar_2 (K1), Scarlett_2 (K1),

Start 45:

- Found in 11 of 213 (5.2%) of genes in pham
- Manual Annotations of this start: 5 of 187
- Called 100.0% of time when present
- Phage (with cluster) where this start called: Dartin_3 (K1), McMater_3 (K1), Niklas_3 (K1), Pace1224_68 (G2), Peanam_3 (K1), Pisa1_3 (K1), Pisa4_3 (K1), Richo_3 (K1), Shaobing_3 (K1), Taheera_60 (G1), Terror_60 (G1),

Start 46:

- Found in 2 of 213 (0.9%) of genes in pham
- Manual Annotations of this start: 2 of 187
- Called 100.0% of time when present
- Phage (with cluster) where this start called: Marshawn_2 (K6), SirPhilip_3 (K6),

Start 47:

- Found in 12 of 213 (5.6%) of genes in pham
- Manual Annotations of this start: 11 of 187
- Called 100.0% of time when present
- Phage (with cluster) where this start called: Amgine_89 (K6), Applecrisp_87 (K6), Ellie_88 (K6), Fefferhead_90 (K6), Hurricane_89 (K3), Keshu_91 (K3), Lavahound_89 (K6), Lea83_89 (K3), MacnCheese_90 (K3), Pixie_88 (K3), ShedlockHolmes_91 (K3), TBond007_85 (K3),

Start 48:

- Found in 51 of 213 (23.9%) of genes in pham
- Manual Annotations of this start: 45 of 187
- Called 98.0% of time when present
- Phage (with cluster) where this start called: Agent47_2 (K5), AlleyCat_2 (K5), BananenDer11_2 (K5), Bobquesha_2 (K4), Chancellor_2 (K4), Cheetobro_2 (K4), Collard_2 (K5), Dadosky_2 (K5), DanSyl44_2 (K4), DoubleChamp_2 (K5), Edugator_2 (K5), Eponine_2 (K4), Feyre_2 (K5), Fionnbharth_2 (K4), Gengar_2 (K5), Guillsminger_2 (K5), Heftyboy_2 (K5), InvictusManeo_2 (K5), JF1_2 (K4), Juliette_2 (K4), Kraw_2 (K4), Lebo14_2 (K4), Leston_2 (K5), Malthus_2 (K4), Miryou_2 (K5), MissDaisy_2 (K4), Mitti_2 (K4), OkiRoe_2 (K5), OmniCritical_2 (K4), Omnicron_2 (K5), Paola_2 (K5), Patt_2 (K4), Phayonce_75 (P5), Psycho_2 (K5), Qhanda_2 (K4), Rando14_2 (K5), Reptar3000_2 (K4), Ruthiejr_2 (K4), SamScheppers_2 (K4), Slarp_2 (K4), SoSeph_2 (K5), Taquito_2 (K4), ThulaThula_78 (P5), Thyatira_2 (K5), TribbleTrouble_91 (K3), Waterfoul_2 (K5), Wintermute_2 (K4), Y10_02 (K4), Y2_02 (K4), YasnayaPolyana_2 (K4),

Start 49:

- Found in 2 of 213 (0.9%) of genes in pham
- Manual Annotations of this start: 1 of 187
- Called 50.0% of time when present
- Phage (with cluster) where this start called: Ekdilam_82 (K6),

Start 50:

- Found in 3 of 213 (1.4%) of genes in pham
- Manual Annotations of this start: 3 of 187
- Called 100.0% of time when present
- Phage (with cluster) where this start called: Amohnition_87 (K6), DARTH_P_87 (K6), Hammy_87 (K6),

Start 51:

- Found in 1 of 213 (0.5%) of genes in pham
- Manual Annotations of this start: 1 of 187
- Called 100.0% of time when present
- Phage (with cluster) where this start called: Paito_66 (G1),

Start 52:

- Found in 1 of 213 (0.5%) of genes in pham
- Manual Annotations of this start: 1 of 187
- Called 100.0% of time when present
- Phage (with cluster) where this start called: TClif_2 (K6),

Start 54:

- Found in 98 of 213 (46.0%) of genes in pham
- Manual Annotations of this start: 1 of 187
- Called 1.0% of time when present
- Phage (with cluster) where this start called: Pharb_89 (K3),

Summary by clusters:

There are 9 clusters represented in this pham: G2, G1, P5, K1, K3, L4, K6, K5, K4,

Info for manual annotations of cluster G1:

- Start number 45 was manually annotated 2 times for cluster G1.
- Start number 51 was manually annotated 1 time for cluster G1.

Info for manual annotations of cluster K1:

- Start number 32 was manually annotated 2 times for cluster K1.
- Start number 34 was manually annotated 1 time for cluster K1.
- Start number 37 was manually annotated 88 times for cluster K1.
- Start number 40 was manually annotated 1 time for cluster K1.
- Start number 44 was manually annotated 4 times for cluster K1.
- Start number 45 was manually annotated 3 times for cluster K1.

Info for manual annotations of cluster K3:

- Start number 47 was manually annotated 7 times for cluster K3.
- Start number 48 was manually annotated 1 time for cluster K3.
- Start number 54 was manually annotated 1 time for cluster K3.

Info for manual annotations of cluster K4:

- Start number 48 was manually annotated 22 times for cluster K4.

Info for manual annotations of cluster K5:

- Start number 48 was manually annotated 20 times for cluster K5.

Info for manual annotations of cluster K6:

- Start number 30 was manually annotated 1 time for cluster K6.
- Start number 42 was manually annotated 15 times for cluster K6.
- Start number 43 was manually annotated 1 time for cluster K6.
- Start number 46 was manually annotated 2 times for cluster K6.
- Start number 47 was manually annotated 4 times for cluster K6.
- Start number 49 was manually annotated 1 time for cluster K6.
- Start number 50 was manually annotated 3 times for cluster K6.
- Start number 52 was manually annotated 1 time for cluster K6.

Info for manual annotations of cluster L4:

- Start number 39 was manually annotated 2 times for cluster L4.
- Start number 41 was manually annotated 2 times for cluster L4.

Info for manual annotations of cluster P5:

•Start number 48 was manually annotated 2 times for cluster P5.

Gene Information:

Gene: ActinUp_3 Start: 476, Stop: 730, Start Num: 37

Candidate Starts for ActinUp_3:

(26, 350), (Start: 37 @476 has 88 MA's), (Start: 54 @497 has 1 MA's), (63, 545), (68, 563), (70, 569), (81, 617), (84, 635), (85, 638), (88, 656), (90, 668), (94, 680), (98, 701),

Gene: Adephagia_3 Start: 476, Stop: 730, Start Num: 37

Candidate Starts for Adephagia_3:

(26, 350), (Start: 37 @476 has 88 MA's), (Start: 54 @497 has 1 MA's), (63, 545), (68, 563), (70, 569), (81, 617), (84, 635), (85, 638), (88, 656), (90, 668), (94, 680), (98, 701),

Gene: Adonis_3 Start: 452, Stop: 706, Start Num: 37

Candidate Starts for Adonis_3:

(15, 227), (26, 326), (Start: 37 @452 has 88 MA's), (Start: 54 @473 has 1 MA's), (63, 521), (68, 539), (70, 545), (81, 593), (84, 611), (85, 614), (88, 632), (90, 644), (94, 656), (98, 677),

Gene: Agent47_2 Start: 300, Stop: 545, Start Num: 48

Candidate Starts for Agent47_2:

(Start: 48 @300 has 45 MA's), (68, 378), (78, 417), (85, 453), (88, 471), (96, 501), (98, 516),

Gene: Ageofdapage_3 Start: 435, Stop: 689, Start Num: 37

Candidate Starts for Ageofdapage_3:

(10, 174), (11, 180), (26, 309), (Start: 37 @435 has 88 MA's), (Start: 54 @456 has 1 MA's), (61, 495), (68, 522), (70, 528), (81, 576), (85, 597), (88, 615), (96, 645), (98, 660),

Gene: AlishaPH_3 Start: 475, Stop: 729, Start Num: 37

Candidate Starts for AlishaPH_3:

(26, 349), (Start: 37 @475 has 88 MA's), (Start: 54 @496 has 1 MA's), (63, 544), (68, 562), (70, 568), (81, 616), (84, 634), (85, 637), (88, 655), (90, 667), (94, 679),

Gene: AlleyCat_2 Start: 300, Stop: 545, Start Num: 48

Candidate Starts for AlleyCat_2:

(Start: 48 @300 has 45 MA's), (65, 372), (68, 378), (70, 384), (79, 420), (81, 432), (85, 453), (87, 459), (88, 471),

Gene: Amgine_89 Start: 58064, Stop: 58318, Start Num: 47

Candidate Starts for Amgine_89:

(Start: 47 @58064 has 11 MA's), (60, 58109), (76, 58166), (81, 58196), (98, 58277),

Gene: Amohntion_87 Start: 57065, Stop: 57322, Start Num: 50

Candidate Starts for Amohntion_87:

(Start: 50 @57065 has 3 MA's), (Start: 54 @57080 has 1 MA's), (60, 57110), (67, 57140), (69, 57146), (81, 57197), (82, 57200), (84, 57215), (94, 57257), (98, 57281), (100, 57290), (101, 57299), (103, 57305),

Gene: Amohntion_3 Start: 416, Stop: 673, Start Num: 42

Candidate Starts for Amohntion_3:

(Start: 42 @416 has 15 MA's), (70, 500), (98, 635),

Gene: Anaya_3 Start: 476, Stop: 730, Start Num: 37

Candidate Starts for Anaya_3:

(26, 350), (Start: 37 @476 has 88 MA's), (Start: 54 @497 has 1 MA's), (63, 545), (68, 563), (70, 569), (81, 617), (84, 635), (85, 638), (88, 656), (90, 668), (94, 680), (98, 701),

Gene: Angelica_3 Start: 476, Stop: 730, Start Num: 37

Candidate Starts for Angelica_3:

(18, 278), (26, 350), (Start: 37 @476 has 88 MA's), (Start: 54 @497 has 1 MA's), (63, 545), (68, 563), (70, 569), (81, 617), (84, 635), (85, 638), (88, 656), (90, 668), (94, 680), (98, 701),

Gene: Anma_3 Start: 440, Stop: 694, Start Num: 37

Candidate Starts for Anma_3:

(15, 215), (26, 314), (Start: 37 @440 has 88 MA's), (Start: 54 @461 has 1 MA's), (61, 500), (68, 527), (70, 533), (81, 581), (84, 599), (88, 620), (90, 632), (98, 665),

Gene: Apocalypse_3 Start: 476, Stop: 730, Start Num: 37

Candidate Starts for Apocalypse_3:

(18, 278), (26, 350), (Start: 37 @476 has 88 MA's), (Start: 54 @497 has 1 MA's), (63, 545), (68, 563), (70, 569), (81, 617), (84, 635), (85, 638), (88, 656), (90, 668), (94, 680), (98, 701),

Gene: Applecrisp_87 Start: 57244, Stop: 57498, Start Num: 47

Candidate Starts for Applecrisp_87:

(24, 57088), (Start: 47 @57244 has 11 MA's), (60, 57289), (64, 57307), (76, 57346), (81, 57376), (86, 57400), (98, 57457),

Gene: Asayake_3 Start: 476, Stop: 730, Start Num: 37

Candidate Starts for Asayake_3:

(26, 350), (Start: 37 @476 has 88 MA's), (Start: 54 @497 has 1 MA's), (61, 536), (63, 545), (68, 563), (70, 569), (81, 617), (85, 638), (88, 656), (94, 680), (98, 701),

Gene: Atiba_3 Start: 452, Stop: 706, Start Num: 37

Candidate Starts for Atiba_3:

(15, 227), (26, 326), (Start: 37 @452 has 88 MA's), (Start: 54 @473 has 1 MA's), (63, 521), (68, 539), (70, 545), (78, 578), (81, 593), (84, 611), (85, 614), (88, 632), (90, 644), (94, 656), (98, 677),

Gene: BEEST_3 Start: 476, Stop: 730, Start Num: 37

Candidate Starts for BEEST_3:

(26, 350), (Start: 37 @476 has 88 MA's), (Start: 54 @497 has 1 MA's), (61, 536), (63, 545), (68, 563), (70, 569), (81, 617), (85, 638), (88, 656), (94, 680), (98, 701),

Gene: BGlluviae_3 Start: 476, Stop: 730, Start Num: 37

Candidate Starts for BGlluviae_3:

(26, 350), (Start: 37 @476 has 88 MA's), (Start: 54 @497 has 1 MA's), (61, 536), (63, 545), (68, 563), (70, 569), (81, 617), (85, 638), (88, 656), (94, 680), (98, 701),

Gene: BaghaKamala_3 Start: 452, Stop: 706, Start Num: 37

Candidate Starts for BaghaKamala_3:

(15, 227), (26, 326), (Start: 37 @452 has 88 MA's), (Start: 54 @473 has 1 MA's), (63, 521), (68, 539), (70, 545), (81, 593), (84, 611), (85, 614), (88, 632), (94, 656), (98, 677),

Gene: BananenDer11_2 Start: 274, Stop: 519, Start Num: 48

Candidate Starts for BananenDer11_2:

(Start: 48 @274 has 45 MA's), (65, 346), (68, 352), (70, 358), (79, 394), (81, 406), (85, 427), (87, 433), (88, 445), (98, 490),

Gene: BarrelRoll_3 Start: 476, Stop: 730, Start Num: 37

Candidate Starts for BarrelRoll_3:

(26, 350), (Start: 37 @476 has 88 MA's), (Start: 54 @497 has 1 MA's), (63, 545), (68, 563), (70, 569), (81, 617), (84, 635), (85, 638), (88, 656), (90, 668), (94, 680), (98, 701),

Gene: Beezoo_3 Start: 473, Stop: 727, Start Num: 37

Candidate Starts for Beezoo_3:

(17, 275), (26, 347), (Start: 37 @473 has 88 MA's), (Start: 54 @494 has 1 MA's), (63, 542), (68, 560), (70, 566), (81, 614), (84, 632), (85, 635), (88, 653), (94, 677), (98, 698),

Gene: Bella96_3 Start: 440, Stop: 694, Start Num: 37

Candidate Starts for Bella96_3:

(Start: 37 @440 has 88 MA's), (Start: 54 @461 has 1 MA's), (61, 500), (68, 527), (70, 533), (81, 581), (84, 599), (85, 602), (88, 620), (90, 632), (98, 665),

Gene: Belladonna_3 Start: 476, Stop: 730, Start Num: 37

Candidate Starts for Belladonna_3:

(26, 350), (Start: 37 @476 has 88 MA's), (Start: 54 @497 has 1 MA's), (61, 536), (63, 545), (68, 563), (70, 569), (81, 617), (85, 638), (88, 656), (94, 680), (98, 701),

Gene: Bern_3 Start: 436, Stop: 690, Start Num: 37

Candidate Starts for Bern_3:

(15, 214), (19, 244), (26, 310), (Start: 37 @436 has 88 MA's), (Start: 54 @457 has 1 MA's), (68, 523), (70, 529), (81, 577), (84, 595), (85, 598), (88, 616), (90, 628), (98, 661),

Gene: Blizzard_3 Start: 476, Stop: 730, Start Num: 37

Candidate Starts for Blizzard_3:

(26, 350), (Start: 37 @476 has 88 MA's), (Start: 54 @497 has 1 MA's), (61, 536), (63, 545), (68, 563), (70, 569), (81, 617), (85, 638), (88, 656), (94, 680), (98, 701),

Gene: Bobquesha_2 Start: 251, Stop: 481, Start Num: 48

Candidate Starts for Bobquesha_2:

(Start: 48 @251 has 45 MA's), (77, 356), (78, 365), (81, 380), (82, 383), (83, 392), (90, 422), (102, 473), (104, 476),

Gene: Boiiii_3 Start: 476, Stop: 730, Start Num: 37

Candidate Starts for Boiiii_3:

(26, 350), (Start: 37 @476 has 88 MA's), (Start: 54 @497 has 1 MA's), (61, 536), (63, 545), (68, 563), (70, 569), (81, 617), (85, 638), (88, 656), (94, 680), (98, 701),

Gene: BrainDrainer_102 Start: 61701, Stop: 61985, Start Num: 39

Candidate Starts for BrainDrainer_102:

(36, 61692), (Start: 39 @61701 has 2 MA's), (Start: 41 @61704 has 2 MA's), (60, 61758), (80, 61848), (85, 61872), (94, 61914), (99, 61944),

Gene: Bromden_101 Start: 62440, Stop: 62721, Start Num: 41

Candidate Starts for Bromden_101:

(Start: 39 @62437 has 2 MA's), (Start: 41 @62440 has 2 MA's), (60, 62494), (80, 62584), (85, 62608), (94, 62650), (99, 62680),

Gene: Bryler_2 Start: 388, Stop: 648, Start Num: 42

Candidate Starts for Bryler_2:

(23, 241), (Start: 42 @388 has 15 MA's), (70, 472), (82, 523),

Gene: CREW_3 Start: 476, Stop: 730, Start Num: 37

Candidate Starts for CREW_3:

(26, 350), (Start: 37 @476 has 88 MA's), (Start: 54 @497 has 1 MA's), (61, 536), (63, 545), (68, 563), (70, 569), (81, 617), (85, 638), (88, 656), (94, 680), (98, 701),

Gene: Cain_2 Start: 388, Stop: 648, Start Num: 42

Candidate Starts for Cain_2:

(23, 241), (Start: 42 @388 has 15 MA's), (70, 472), (82, 523),

Gene: CallaLilly_3 Start: 452, Stop: 706, Start Num: 37

Candidate Starts for CallaLilly_3:

(15, 227), (26, 326), (Start: 37 @452 has 88 MA's), (Start: 54 @473 has 1 MA's), (63, 521), (68, 539), (70, 545), (81, 593), (84, 611), (85, 614), (88, 632), (90, 644), (94, 656), (98, 677),

Gene: Capricorn_3 Start: 476, Stop: 730, Start Num: 37

Candidate Starts for Capricorn_3:

(26, 350), (Start: 37 @476 has 88 MA's), (Start: 54 @497 has 1 MA's), (61, 536), (63, 545), (68, 563), (70, 569), (81, 617), (85, 638), (88, 656), (94, 680), (98, 701),

Gene: CaseJules_3 Start: 476, Stop: 730, Start Num: 37

Candidate Starts for CaseJules_3:

(26, 350), (Start: 37 @476 has 88 MA's), (Start: 54 @497 has 1 MA's), (61, 536), (63, 545), (68, 563), (70, 569), (81, 617), (85, 638), (88, 656), (94, 680), (98, 701),

Gene: Chancellor_2 Start: 251, Stop: 481, Start Num: 48

Candidate Starts for Chancellor_2:

(Start: 48 @251 has 45 MA's), (77, 356), (78, 365), (81, 380), (82, 383), (83, 392), (90, 422), (102, 473),

Gene: Chaser_100 Start: 61053, Stop: 61337, Start Num: 39

Candidate Starts for Chaser_100:

(Start: 39 @61053 has 2 MA's), (Start: 41 @61056 has 2 MA's), (60, 61110), (80, 61200), (85, 61224), (94, 61266), (99, 61296),

Gene: Chavito_3 Start: 474, Stop: 734, Start Num: 40

Candidate Starts for Chavito_3:

(Start: 37 @471 has 88 MA's), (Start: 40 @474 has 1 MA's), (70, 558), (82, 609),

Gene: CheetoDust_3 Start: 452, Stop: 706, Start Num: 37

Candidate Starts for CheetoDust_3:

(Start: 37 @452 has 88 MA's), (Start: 54 @473 has 1 MA's), (63, 521), (68, 539), (70, 545), (81, 593), (84, 611), (85, 614), (88, 632), (90, 644), (94, 656), (98, 677),

Gene: Cheetobro_2 Start: 251, Stop: 481, Start Num: 48

Candidate Starts for Cheetobro_2:

(Start: 48 @251 has 45 MA's), (77, 356), (78, 365), (81, 380), (82, 383), (83, 392), (90, 422), (102, 473),

Gene: Chris_2 Start: 375, Stop: 665, Start Num: 32

Candidate Starts for Chris_2:

(31, 369), (Start: 32 @375 has 2 MA's), (38, 411), (70, 507), (91, 609), (94, 618), (95, 621),

Gene: ChutneyChips_103 Start: 61749, Stop: 62033, Start Num: 39

Candidate Starts for ChutneyChips_103:

(Start: 39 @61749 has 2 MA's), (Start: 41 @61752 has 2 MA's), (60, 61806), (72, 61854), (85, 61920), (94, 61962), (99, 61992),

Gene: Clipper_3 Start: 452, Stop: 706, Start Num: 37

Candidate Starts for Clipper_3:

(15, 227), (26, 326), (Start: 37 @452 has 88 MA's), (Start: 54 @473 has 1 MA's), (63, 521), (68, 539), (70, 545), (81, 593), (84, 611), (85, 614), (88, 632), (94, 656), (98, 677),

Gene: Collard_2 Start: 274, Stop: 519, Start Num: 48

Candidate Starts for Collard_2:

(Start: 48 @274 has 45 MA's), (65, 346), (68, 352), (70, 358), (79, 394), (81, 406), (85, 427), (87, 433), (88, 445), (98, 490),

Gene: CrimD_3 Start: 452, Stop: 706, Start Num: 37

Candidate Starts for CrimD_3:

(15, 227), (26, 326), (Start: 37 @452 has 88 MA's), (Start: 54 @473 has 1 MA's), (68, 539), (70, 545), (81, 593), (84, 611), (85, 614), (88, 632), (94, 656), (98, 677),

Gene: Curiosium_3 Start: 517, Stop: 777, Start Num: 37

Candidate Starts for Curiosium_3:

(26, 391), (Start: 37 @517 has 88 MA's), (Start: 54 @544 has 1 MA's), (61, 583), (63, 592), (65, 604), (68, 610), (70, 616), (81, 664), (84, 682), (85, 685), (88, 703), (98, 748),

Gene: Dadosky_2 Start: 300, Stop: 545, Start Num: 48

Candidate Starts for Dadosky_2:

(Start: 48 @300 has 45 MA's), (65, 372), (68, 378), (70, 384), (79, 420), (81, 432), (85, 453), (87, 459), (88, 471),

Gene: Dalmuri_3 Start: 476, Stop: 730, Start Num: 37

Candidate Starts for Dalmuri_3:

(26, 350), (Start: 37 @476 has 88 MA's), (Start: 54 @497 has 1 MA's), (61, 536), (63, 545), (68, 563), (70, 569), (81, 617), (85, 638), (88, 656), (94, 680), (98, 701),

Gene: DanSyl44_2 Start: 251, Stop: 481, Start Num: 48

Candidate Starts for DanSyl44_2:

(Start: 48 @251 has 45 MA's), (77, 356), (78, 365), (81, 380), (82, 383), (83, 392), (90, 422), (102, 473),

Gene: DartGoblin_3 Start: 440, Stop: 694, Start Num: 37

Candidate Starts for DartGoblin_3:

(Start: 37 @440 has 88 MA's), (Start: 54 @461 has 1 MA's), (61, 500), (68, 527), (70, 533), (81, 581), (84, 599), (85, 602), (88, 620), (90, 632), (98, 665),

Gene: DarthP_87 Start: 56918, Stop: 57175, Start Num: 50

Candidate Starts for DarthP_87:

(Start: 50 @56918 has 3 MA's), (Start: 54 @56933 has 1 MA's), (60, 56963), (67, 56993), (69, 56999), (81, 57050), (82, 57053), (94, 57110), (98, 57134), (100, 57143), (101, 57152), (103, 57158),

Gene: DarthP_3 Start: 416, Stop: 673, Start Num: 42

Candidate Starts for DarthP_3:

(Start: 42 @416 has 15 MA's), (70, 500), (98, 635),

Gene: Dartin_3 Start: 469, Stop: 732, Start Num: 45

Candidate Starts for Dartin_3:

(1, 1), (2, 7), (4, 91), (8, 154), (26, 331), (Start: 45 @469 has 5 MA's), (70, 556), (82, 607), (98, 691),

Gene: Deby_3 Start: 476, Stop: 730, Start Num: 37

Candidate Starts for Deby_3:

(26, 350), (Start: 37 @476 has 88 MA's), (Start: 54 @497 has 1 MA's), (63, 545), (68, 563), (70, 569), (81, 617), (84, 635), (85, 638), (88, 656), (90, 668), (94, 680), (98, 701),

Gene: Devera_3 Start: 452, Stop: 706, Start Num: 37

Candidate Starts for Devera_3:

(15, 227), (26, 326), (Start: 37 @452 has 88 MA's), (Start: 54 @473 has 1 MA's), (61, 512), (68, 539), (70, 545), (81, 593), (85, 614), (88, 632), (98, 677),

Gene: Dole_3 Start: 452, Stop: 706, Start Num: 37

Candidate Starts for Dole_3:

(15, 227), (26, 326), (Start: 37 @452 has 88 MA's), (Start: 54 @473 has 1 MA's), (61, 512), (68, 539), (70, 545), (81, 593), (85, 614), (88, 632), (98, 677),

Gene: DoubleChamp_2 Start: 274, Stop: 519, Start Num: 48

Candidate Starts for DoubleChamp_2:

(Start: 48 @274 has 45 MA's), (65, 346), (68, 352), (70, 358), (79, 394), (81, 406), (85, 427), (87, 433), (88, 445), (98, 490),

Gene: Douge_101 Start: 61124, Stop: 61405, Start Num: 41

Candidate Starts for Douge_101:

(36, 61112), (Start: 39 @61121 has 2 MA's), (Start: 41 @61124 has 2 MA's), (60, 61178), (80, 61268), (85, 61292), (94, 61334), (99, 61364),

Gene: Douzhi_101 Start: 61390, Stop: 61674, Start Num: 39

Candidate Starts for Douzhi_101:

(36, 61381), (Start: 39 @61390 has 2 MA's), (Start: 41 @61393 has 2 MA's), (60, 61447), (80, 61537), (85, 61561), (94, 61603), (99, 61633),

Gene: DrHayes_3 Start: 440, Stop: 694, Start Num: 37

Candidate Starts for DrHayes_3:

(15, 215), (26, 314), (Start: 37 @440 has 88 MA's), (Start: 54 @461 has 1 MA's), (61, 500), (68, 527), (70, 533), (81, 581), (84, 599), (88, 620), (90, 632), (98, 665),

Gene: Durfee_3 Start: 476, Stop: 730, Start Num: 37

Candidate Starts for Durfee_3:

(26, 350), (Start: 37 @476 has 88 MA's), (Start: 54 @497 has 1 MA's), (61, 536), (63, 545), (68, 563), (70, 569), (81, 617), (85, 638), (88, 656), (94, 680), (98, 701),

Gene: DyoEdafos_104 Start: 61681, Stop: 61965, Start Num: 39

Candidate Starts for DyoEdafos_104:

(Start: 39 @61681 has 2 MA's), (Start: 41 @61684 has 2 MA's), (80, 61828), (85, 61852), (99, 61924),

Gene: Edugator_2 Start: 300, Stop: 545, Start Num: 48

Candidate Starts for Edugator_2:

(Start: 48 @300 has 45 MA's), (65, 372), (68, 378), (70, 384), (79, 420), (81, 432), (85, 453), (87, 459), (88, 471),

Gene: Efra2_3 Start: 445, Stop: 699, Start Num: 37

Candidate Starts for Efra2_3:

(Start: 37 @445 has 88 MA's), (Start: 54 @466 has 1 MA's), (61, 505), (68, 532), (70, 538), (81, 586), (84, 604), (85, 607), (88, 625), (98, 670), (100, 679),

Gene: Ekdilam_82 Start: 56617, Stop: 56874, Start Num: 49

Candidate Starts for Ekdilam_82:

(3, 56164), (6, 56254), (9, 56296), (28, 56500), (Start: 49 @56617 has 1 MA's), (53, 56629), (60, 56662), (67, 56692), (69, 56698), (81, 56749), (82, 56752), (84, 56767), (94, 56809), (98, 56833), (100, 56842), (103, 56857),

Gene: Ellie_88 Start: 57234, Stop: 57488, Start Num: 47

Candidate Starts for Ellie_88:

(24, 57078), (Start: 47 @57234 has 11 MA's), (60, 57279), (64, 57297), (76, 57336), (81, 57366), (86, 57390), (98, 57447),

Gene: Emerson_3 Start: 476, Stop: 730, Start Num: 37

Candidate Starts for Emerson_3:

(26, 350), (Start: 37 @476 has 88 MA's), (Start: 54 @497 has 1 MA's), (63, 545), (68, 563), (70, 569), (81, 617), (84, 635), (85, 638), (88, 656), (90, 668), (94, 680), (98, 701),

Gene: Eponine_2 Start: 251, Stop: 481, Start Num: 48

Candidate Starts for Eponine_2:

(Start: 48 @251 has 45 MA's), (53, 260), (77, 356), (81, 380), (82, 383), (83, 392), (90, 422), (102, 473),

Gene: FarmResident_102 Start: 61280, Stop: 61591, Start Num: 41

Candidate Starts for FarmResident_102:

(Start: 39 @61277 has 2 MA's), (Start: 41 @61280 has 2 MA's), (60, 61334), (80, 61424), (82, 61430), (85, 61448), (98, 61517), (99, 61520), (105, 61559),

Gene: Fefferhead_90 Start: 57025, Stop: 57279, Start Num: 47

Candidate Starts for Fefferhead_90:

(Start: 47 @57025 has 11 MA's), (60, 57070), (76, 57127), (81, 57157), (92, 57211), (98, 57238),

Gene: Fefferhead_3 Start: 410, Stop: 667, Start Num: 42

Candidate Starts for Fefferhead_3:

(35, 389), (Start: 42 @410 has 15 MA's), (98, 629),

Gene: Feyre_2 Start: 275, Stop: 520, Start Num: 48

Candidate Starts for Feyre_2:

(Start: 48 @275 has 45 MA's), (65, 347), (68, 353), (70, 359), (79, 395), (81, 407), (85, 428), (87, 434), (88, 446), (98, 491),

Gene: Fionnbharth_2 Start: 251, Stop: 481, Start Num: 48

Candidate Starts for Fionnbharth_2:

(Start: 48 @251 has 45 MA's), (53, 260), (77, 356), (81, 380), (82, 383), (83, 392), (90, 422), (102, 473),

Gene: Ganymede_3 Start: 452, Stop: 706, Start Num: 37

Candidate Starts for Ganymede_3:

(15, 227), (26, 326), (Start: 37 @452 has 88 MA's), (Start: 54 @473 has 1 MA's), (63, 521), (68, 539), (70, 545), (81, 593), (84, 611), (85, 614), (88, 632), (90, 644), (94, 656), (98, 677),

Gene: Gengar_2 Start: 300, Stop: 545, Start Num: 48

Candidate Starts for Gengar_2:

(Start: 48 @300 has 45 MA's), (65, 372), (68, 378), (70, 384), (79, 420), (81, 432), (85, 453), (87, 459), (88, 471), (98, 516),

Gene: Geraldini_3 Start: 473, Stop: 727, Start Num: 37

Candidate Starts for Geraldini_3:

(17, 275), (26, 347), (Start: 37 @473 has 88 MA's), (Start: 54 @494 has 1 MA's), (63, 542), (68, 560), (70, 566), (81, 614), (84, 632), (85, 635), (88, 653), (94, 677), (98, 698),

Gene: Guanica15_3 Start: 445, Stop: 702, Start Num: 37

Candidate Starts for Guanica15_3:

(26, 325), (Start: 37 @445 has 88 MA's), (Start: 54 @466 has 1 MA's), (61, 505), (68, 532), (70, 538), (78, 571), (81, 586), (84, 604), (85, 607), (88, 625), (98, 673),

Gene: Guillsminger_2 Start: 275, Stop: 520, Start Num: 48

Candidate Starts for Guillsminger_2:

(Start: 48 @275 has 45 MA's), (65, 347), (68, 353), (70, 359), (79, 395), (81, 407), (85, 428), (87, 434), (88, 446), (98, 491),

Gene: Hammy_87 Start: 56908, Stop: 57165, Start Num: 50

Candidate Starts for Hammy_87:

(Start: 50 @56908 has 3 MA's), (Start: 54 @56923 has 1 MA's), (60, 56953), (67, 56983), (69, 56989), (81, 57040), (82, 57043), (84, 57058), (94, 57100), (98, 57124), (100, 57133), (101, 57142), (103, 57148),

Gene: Hammy_3 Start: 413, Stop: 670, Start Num: 42

Candidate Starts for Hammy_3:

(Start: 42 @413 has 15 MA's), (70, 497), (98, 632),

Gene: HedwigODU_3 Start: 476, Stop: 730, Start Num: 37

Candidate Starts for HedwigODU_3:

(26, 350), (Start: 37 @476 has 88 MA's), (Start: 54 @497 has 1 MA's), (63, 545), (68, 563), (70, 569), (81, 617), (84, 635), (85, 638), (88, 656), (90, 668), (94, 680), (98, 701),

Gene: Heftyboy_2 Start: 296, Stop: 541, Start Num: 48

Candidate Starts for Heftyboy_2:

(Start: 48 @296 has 45 MA's), (65, 368), (68, 374), (70, 380), (79, 416), (81, 428), (85, 449), (87, 455), (88, 467), (98, 512),

Gene: Homura_3 Start: 476, Stop: 730, Start Num: 37

Candidate Starts for Homura_3:

(26, 350), (Start: 37 @476 has 88 MA's), (Start: 54 @497 has 1 MA's), (61, 536), (63, 545), (68, 563), (70, 569), (81, 617), (85, 638), (88, 656), (94, 680), (98, 701),

Gene: Hurricane_89 Start: 56085, Stop: 56348, Start Num: 47

Candidate Starts for Hurricane_89:

(Start: 47 @56085 has 11 MA's), (58, 56115), (64, 56151), (65, 56157), (75, 56184), (79, 56208), (81, 56220), (86, 56244), (88, 56256), (94, 56280), (95, 56283), (98, 56307), (101, 56325),

Gene: Hyperbowlee_3 Start: 476, Stop: 730, Start Num: 37

Candidate Starts for Hyperbowlee_3:

(26, 350), (Start: 37 @476 has 88 MA's), (Start: 54 @497 has 1 MA's), (61, 536), (63, 545), (68, 563), (70, 569), (81, 617), (85, 638), (88, 656), (94, 680), (98, 701),

Gene: Illumine_3 Start: 452, Stop: 706, Start Num: 37

Candidate Starts for Illumine_3:

(15, 227), (26, 326), (Start: 37 @452 has 88 MA's), (Start: 54 @473 has 1 MA's), (61, 512), (68, 539), (70, 545), (81, 593), (85, 614), (88, 632), (98, 677),

Gene: Inky_3 Start: 476, Stop: 730, Start Num: 37

Candidate Starts for Inky_3:

(26, 350), (Start: 37 @476 has 88 MA's), (Start: 54 @497 has 1 MA's), (61, 536), (63, 545), (68, 563), (70, 569), (81, 617), (85, 638), (88, 656), (94, 680), (98, 701),

Gene: InvictusManeo_2 Start: 300, Stop: 545, Start Num: 48

Candidate Starts for InvictusManeo_2:

(Start: 48 @300 has 45 MA's), (68, 378), (78, 417), (85, 453), (88, 471), (96, 501), (98, 516),

Gene: JAWS_3 Start: 476, Stop: 730, Start Num: 37

Candidate Starts for JAWS_3:

(26, 350), (Start: 37 @476 has 88 MA's), (Start: 54 @497 has 1 MA's), (63, 545), (68, 563), (70, 569), (81, 617), (84, 635), (85, 638), (88, 656), (90, 668), (94, 680), (98, 701),

Gene: JF1_2 Start: 251, Stop: 481, Start Num: 48

Candidate Starts for JF1_2:

(Start: 48 @251 has 45 MA's), (53, 260), (77, 356), (81, 380), (82, 383), (83, 392), (90, 422), (102, 473),

Gene: Jarvi_3 Start: 476, Stop: 730, Start Num: 37

Candidate Starts for Jarvi_3:

(26, 350), (Start: 37 @476 has 88 MA's), (Start: 54 @497 has 1 MA's), (61, 536), (63, 545), (68, 563), (70, 569), (81, 617), (85, 638), (88, 656), (94, 680), (98, 701),

Gene: Jayhawk_3 Start: 476, Stop: 730, Start Num: 37

Candidate Starts for Jayhawk_3:

(26, 350), (Start: 37 @476 has 88 MA's), (Start: 54 @497 has 1 MA's), (63, 545), (68, 563), (70, 569), (81, 617), (84, 635), (85, 638), (88, 656), (90, 668), (94, 680), (98, 701),

Gene: Jeckyll_3 Start: 476, Stop: 730, Start Num: 37

Candidate Starts for Jeckyll_3:

(26, 350), (Start: 37 @476 has 88 MA's), (Start: 54 @497 has 1 MA's), (61, 536), (63, 545), (68, 563), (70, 569), (81, 617), (85, 638), (88, 656), (94, 680), (98, 701),

Gene: Joy99_3 Start: 452, Stop: 706, Start Num: 37

Candidate Starts for Joy99_3:

(15, 227), (26, 326), (Start: 37 @452 has 88 MA's), (Start: 54 @473 has 1 MA's), (63, 521), (68, 539), (70, 545), (81, 593), (84, 611), (85, 614), (88, 632), (98, 677),

Gene: Juliette_2 Start: 251, Stop: 481, Start Num: 48

Candidate Starts for Juliette_2:

(Start: 48 @251 has 45 MA's), (53, 260), (77, 356), (81, 380), (82, 383), (83, 392), (90, 422), (102, 473),

Gene: Keshu_91 Start: 56377, Stop: 56640, Start Num: 47

Candidate Starts for Keshu_91:

(Start: 47 @56377 has 11 MA's), (62, 56434), (66, 56455), (69, 56461), (76, 56482), (79, 56500), (86, 56536), (98, 56599), (101, 56617),

Gene: KiSi_2 Start: 346, Stop: 612, Start Num: 44

Candidate Starts for KiSi_2:

(5, 1), (22, 187), (Start: 44 @346 has 4 MA's), (82, 487), (88, 523), (91, 538),

Gene: Kraw_2 Start: 251, Stop: 481, Start Num: 48

Candidate Starts for Kraw_2:

(Start: 48 @251 has 45 MA's), (53, 260), (77, 356), (81, 380), (82, 383), (83, 392), (90, 422), (102, 473),

Gene: Kropertea_96 Start: 60883, Stop: 61203, Start Num: 39

Candidate Starts for Kropertea_96:

(Start: 39 @60883 has 2 MA's), (Start: 41 @60886 has 2 MA's), (72, 60988), (78, 61018), (80, 61030), (82, 61036), (85, 61054), (98, 61123),

Gene: Krueger_3 Start: 500, Stop: 760, Start Num: 42

Candidate Starts for Krueger_3:

(Start: 42 @500 has 15 MA's), (70, 584), (82, 635), (98, 719),

Gene: LastHope_3 Start: 447, Stop: 701, Start Num: 37

Candidate Starts for LastHope_3:

(15, 225), (26, 321), (Start: 37 @447 has 88 MA's), (Start: 54 @468 has 1 MA's), (65, 528), (68, 534), (70, 540), (81, 588), (84, 606), (85, 609), (88, 627),

Gene: LaterM_3 Start: 452, Stop: 706, Start Num: 37

Candidate Starts for LaterM_3:

(12, 197), (15, 227), (26, 326), (Start: 37 @452 has 88 MA's), (Start: 54 @473 has 1 MA's), (61, 512), (68, 539), (81, 593), (85, 614), (88, 632), (96, 662), (98, 677),

Gene: Lavahound_89 Start: 58194, Stop: 58448, Start Num: 47

Candidate Starts for Lavahound_89:

(Start: 47 @58194 has 11 MA's), (60, 58239), (76, 58296), (81, 58326), (98, 58407),

Gene: LeMond_2 Start: 346, Stop: 612, Start Num: 44

Candidate Starts for LeMond_2:

(5, 1), (22, 187), (Start: 44 @346 has 4 MA's), (82, 487), (88, 523), (91, 538),

Gene: Lea83_89 Start: 56206, Stop: 56469, Start Num: 47

Candidate Starts for Lea83_89:

(Start: 47 @56206 has 11 MA's), (53, 56221), (58, 56236), (64, 56272), (65, 56278), (75, 56305), (79, 56329), (80, 56338), (81, 56341), (86, 56365), (88, 56377), (94, 56401), (98, 56428), (101, 56446),

Gene: Lebo14_2 Start: 251, Stop: 481, Start Num: 48

Candidate Starts for Lebo14_2:

(Start: 48 @251 has 45 MA's), (77, 356), (78, 365), (81, 380), (82, 383), (83, 392), (90, 422), (102, 473),

Gene: Leston_2 Start: 300, Stop: 545, Start Num: 48

Candidate Starts for Leston_2:

(Start: 48 @300 has 45 MA's), (65, 372), (68, 378), (70, 384), (79, 420), (81, 432), (85, 453), (87, 459), (88, 471), (98, 516),

Gene: LindNT_3 Start: 452, Stop: 706, Start Num: 37

Candidate Starts for LindNT_3:

(15, 227), (26, 326), (Start: 37 @452 has 88 MA's), (Start: 54 @473 has 1 MA's), (63, 521), (68, 539), (70, 545), (81, 593), (84, 611), (85, 614), (88, 632), (94, 656), (98, 677),

Gene: Llorens_3 Start: 476, Stop: 730, Start Num: 37

Candidate Starts for Llorens_3:

(26, 350), (Start: 37 @476 has 88 MA's), (Start: 54 @497 has 1 MA's), (61, 536), (63, 545), (68, 563), (70, 569), (81, 617), (85, 638), (88, 656), (94, 680), (98, 701),

Gene: Lunahalos_3 Start: 476, Stop: 730, Start Num: 37

Candidate Starts for Lunahalos_3:

(26, 350), (Start: 37 @476 has 88 MA's), (Start: 54 @497 has 1 MA's), (61, 536), (63, 545), (68, 563), (70, 569), (81, 617), (85, 638), (88, 656), (94, 680), (98, 701),

Gene: MacKat_3 Start: 452, Stop: 706, Start Num: 37

Candidate Starts for MacKat_3:

(15, 227), (26, 326), (Start: 37 @452 has 88 MA's), (Start: 54 @473 has 1 MA's), (63, 521), (68, 539), (70, 545), (81, 593), (84, 611), (85, 614), (88, 632), (94, 656), (98, 677),

Gene: MacnCheese_90 Start: 56613, Stop: 56876, Start Num: 47

Candidate Starts for MacnCheese_90:

(27, 56478), (Start: 47 @56613 has 11 MA's), (58, 56643), (64, 56679), (65, 56685), (79, 56736), (81, 56748), (86, 56772), (88, 56784), (94, 56808), (98, 56835), (100, 56844), (101, 56853),

Gene: Malthus_2 Start: 251, Stop: 481, Start Num: 48

Candidate Starts for Malthus_2:

(Start: 48 @251 has 45 MA's), (53, 260), (77, 356), (81, 380), (82, 383), (83, 392), (90, 422), (102, 473),

Gene: MarkPhew_2 Start: 323, Stop: 568, Start Num: 32

Candidate Starts for MarkPhew_2:

(Start: 32 @323 has 2 MA's), (59, 359), (70, 410), (82, 461), (94, 521),

Gene: Marshawn_2 Start: 329, Stop: 583, Start Num: 46

Candidate Starts for Marshawn_2:

(20, 125), (22, 149), (Start: 46 @329 has 2 MA's), (55, 344), (58, 353), (82, 464), (98, 548),

Gene: McMater_3 Start: 469, Stop: 732, Start Num: 45

Candidate Starts for McMater_3:

(1, 1), (2, 7), (4, 91), (8, 154), (26, 331), (Start: 45 @469 has 5 MA's), (70, 556), (82, 607), (98, 691),

Gene: MeaningOfLife_3 Start: 452, Stop: 706, Start Num: 37

Candidate Starts for MeaningOfLife_3:

(15, 227), (26, 326), (Start: 37 @452 has 88 MA's), (Start: 54 @473 has 1 MA's), (63, 521), (68, 539), (70, 545), (81, 593), (84, 611), (85, 614), (88, 632), (94, 656), (98, 677),

Gene: Megsy_3 Start: 452, Stop: 706, Start Num: 37

Candidate Starts for Megsy_3:

(15, 227), (26, 326), (Start: 37 @452 has 88 MA's), (Start: 54 @473 has 1 MA's), (63, 521), (68, 539), (70, 545), (81, 593), (84, 611), (85, 614), (88, 632), (94, 656), (98, 677),

Gene: Miryou_2 Start: 275, Stop: 520, Start Num: 48

Candidate Starts for Miryou_2:

(Start: 48 @275 has 45 MA's), (65, 347), (68, 353), (70, 359), (79, 395), (81, 407), (85, 428), (87, 434), (88, 446), (98, 491),

Gene: MissDaisy_2 Start: 251, Stop: 427, Start Num: 48

Candidate Starts for MissDaisy_2:

(Start: 48 @251 has 45 MA's), (77, 302), (78, 311), (81, 326), (82, 329), (83, 338), (90, 368), (102, 419),

Gene: Mitti_2 Start: 251, Stop: 481, Start Num: 48

Candidate Starts for Mitti_2:

(Start: 48 @251 has 45 MA's), (77, 356), (78, 365), (81, 380), (82, 383), (83, 392), (90, 422), (102, 473),

Gene: Murucutumbu_3 Start: 452, Stop: 706, Start Num: 37

Candidate Starts for Murucutumbu_3:

(13, 206), (15, 227), (26, 326), (Start: 37 @452 has 88 MA's), (Start: 54 @473 has 1 MA's), (63, 521), (68, 539), (70, 545), (80, 590), (81, 593), (84, 611), (85, 614), (88, 632), (94, 656), (98, 677),

Gene: Mynx_3 Start: 452, Stop: 706, Start Num: 37

Candidate Starts for Mynx_3:

(15, 227), (26, 326), (Start: 37 @452 has 88 MA's), (Start: 54 @473 has 1 MA's), (63, 521), (68, 539), (70, 545), (78, 578), (81, 593), (84, 611), (85, 614), (88, 632), (94, 656), (98, 677),

Gene: Nibb_2 Start: 333, Stop: 605, Start Num: 34

Candidate Starts for Nibb_2:

(Start: 34 @333 has 1 MA's), (62, 393), (88, 513), (90, 525), (95, 540),

Gene: Niklas_3 Start: 469, Stop: 732, Start Num: 45

Candidate Starts for Niklas_3:

(1, 1), (2, 7), (4, 91), (8, 154), (26, 331), (Start: 45 @469 has 5 MA's), (70, 556), (82, 607), (98, 691),

Gene: November_3 Start: 424, Stop: 687, Start Num: 42

Candidate Starts for November_3:

(Start: 42 @424 has 15 MA's), (70, 511), (85, 580), (98, 646),

Gene: OkiRoe_2 Start: 275, Stop: 520, Start Num: 48

Candidate Starts for OkiRoe_2:

(Start: 48 @275 has 45 MA's), (57, 293), (65, 347), (68, 353), (70, 359), (79, 395), (81, 407), (85, 428), (87, 434), (88, 446), (98, 491),

Gene: OmniCritical_2 Start: 251, Stop: 481, Start Num: 48

Candidate Starts for OmniCritical_2:

(Start: 48 @251 has 45 MA's), (77, 356), (78, 365), (81, 380), (82, 383), (83, 392), (90, 422), (102, 473),

Gene: Omnicron_2 Start: 241, Stop: 486, Start Num: 48

Candidate Starts for Omnicron_2:

(Start: 48 @241 has 45 MA's), (65, 313), (68, 319), (70, 325), (81, 373), (85, 394), (88, 412), (94, 436),

Gene: Oscar_2 Start: 346, Stop: 612, Start Num: 44

Candidate Starts for Oscar_2:

(Start: 44 @346 has 4 MA's), (82, 487), (88, 523), (91, 538),

Gene: PYPDinur_101 Start: 61956, Stop: 62237, Start Num: 41

Candidate Starts for PYPDinur_101:

(36, 61944), (Start: 39 @61953 has 2 MA's), (Start: 41 @61956 has 2 MA's), (80, 62100), (85, 62124), (94, 62166), (99, 62196),

Gene: Pace1224_68 Start: 44266, Stop: 44490, Start Num: 45

Candidate Starts for Pace1224_68:

(11, 43984), (14, 44005), (16, 44026), (21, 44077), (29, 44161), (33, 44233), (Start: 34 @44236 has 1 MA's), (Start: 45 @44266 has 5 MA's), (81, 44410),

Gene: Padfoot_3 Start: 476, Stop: 730, Start Num: 37

Candidate Starts for Padfoot_3:

(26, 350), (Start: 37 @476 has 88 MA's), (Start: 54 @497 has 1 MA's), (61, 536), (63, 545), (68, 563), (70, 569), (81, 617), (85, 638), (88, 656), (94, 680), (98, 701),

Gene: Padpat_3 Start: 476, Stop: 730, Start Num: 37

Candidate Starts for Padpat_3:

(26, 350), (Start: 37 @476 has 88 MA's), (Start: 54 @497 has 1 MA's), (63, 545), (68, 563), (70, 569), (81, 617), (84, 635), (85, 638), (88, 656), (90, 668), (94, 680), (98, 701),

Gene: Paito_66 Start: 41579, Stop: 41797, Start Num: 51

Candidate Starts for Paito_66:

(Start: 51 @41579 has 1 MA's), (68, 41660), (74, 41675), (81, 41717), (89, 41765), (93, 41777),

Gene: Paola_2 Start: 275, Stop: 520, Start Num: 48

Candidate Starts for Paola_2:

(Start: 48 @275 has 45 MA's), (65, 347), (68, 353), (70, 359), (79, 395), (81, 407), (85, 428), (87, 434), (88, 446), (98, 491),

Gene: Patt_2 Start: 251, Stop: 481, Start Num: 48

Candidate Starts for Patt_2:

(Start: 48 @251 has 45 MA's), (77, 356), (78, 365), (81, 380), (82, 383), (83, 392), (90, 422), (102, 473),

Gene: Peanam_3 Start: 469, Stop: 732, Start Num: 45

Candidate Starts for Peanam_3:

(26, 331), (Start: 45 @469 has 5 MA's), (70, 556), (82, 607), (98, 691),

Gene: Peel_3 Start: 476, Stop: 730, Start Num: 37

Candidate Starts for Peel_3:

(26, 350), (Start: 37 @476 has 88 MA's), (Start: 54 @497 has 1 MA's), (61, 536), (63, 545), (68, 563), (70, 569), (81, 617), (85, 638), (88, 656), (94, 680), (98, 701),

Gene: Pharb_89 Start: 56013, Stop: 56249, Start Num: 54

Candidate Starts for Pharb_89:

(Start: 48 @56001 has 45 MA's), (Start: 54 @56013 has 1 MA's), (56, 56016), (71, 56079), (73, 56085), (80, 56124), (85, 56148), (91, 56181), (98, 56214),

Gene: Phayonce_75 Start: 47994, Stop: 48278, Start Num: 48

Candidate Starts for Phayonce_75:

(Start: 48 @47994 has 45 MA's), (78, 48120), (94, 48195),

Gene: PhelpsODU_2 Start: 389, Stop: 649, Start Num: 42

Candidate Starts for PhelpsODU_2:

(23, 242), (Start: 42 @389 has 15 MA's),

Gene: Phrank_2 Start: 394, Stop: 654, Start Num: 42

Candidate Starts for Phrank_2:

(23, 247), (Start: 42 @394 has 15 MA's), (70, 478), (82, 529),

Gene: Piatt_3 Start: 476, Stop: 730, Start Num: 37

Candidate Starts for Piatt_3:

(26, 350), (Start: 37 @476 has 88 MA's), (Start: 54 @497 has 1 MA's), (61, 536), (63, 545), (68, 563), (70, 569), (81, 617), (85, 638), (88, 656), (94, 680), (98, 701),

Gene: Pisa1_3 Start: 442, Stop: 696, Start Num: 45

Candidate Starts for Pisa1_3:

(26, 310), (Start: 45 @442 has 5 MA's), (79, 556), (98, 655),

Gene: Pisa4_3 Start: 442, Stop: 696, Start Num: 45

Candidate Starts for Pisa4_3:

(26, 310), (Start: 45 @442 has 5 MA's), (79, 556), (98, 655),

Gene: Pixie_88 Start: 55789, Stop: 56052, Start Num: 47

Candidate Starts for Pixie_88:

(Start: 47 @55789 has 11 MA's), (58, 55819), (60, 55837), (64, 55855), (65, 55861), (75, 55888), (79, 55912), (80, 55921), (81, 55924), (86, 55948), (88, 55960), (94, 55984), (98, 56011), (101, 56029),

Gene: Pokerus_3 Start: 452, Stop: 706, Start Num: 37

Candidate Starts for Pokerus_3:

(15, 227), (26, 326), (Start: 37 @452 has 88 MA's), (Start: 54 @473 has 1 MA's), (63, 521), (68, 539), (81, 593), (84, 611), (85, 614), (88, 632), (94, 656), (98, 677),

Gene: Prithvi_3 Start: 452, Stop: 706, Start Num: 37

Candidate Starts for Prithvi_3:

(15, 227), (26, 326), (Start: 37 @452 has 88 MA's), (Start: 54 @473 has 1 MA's), (63, 521), (68, 539), (70, 545), (81, 593), (84, 611), (85, 614), (88, 632), (94, 656), (98, 677),

Gene: Psycho_2 Start: 300, Stop: 545, Start Num: 48

Candidate Starts for Psycho_2:

(Start: 48 @300 has 45 MA's), (65, 372), (68, 378), (70, 384), (79, 420), (81, 432), (85, 453), (87, 459), (88, 471),

Gene: Qhanda_2 Start: 251, Stop: 481, Start Num: 48

Candidate Starts for Qhanda_2:

(Start: 48 @251 has 45 MA's), (77, 356), (78, 365), (81, 380), (82, 383), (83, 392), (90, 422), (102, 473),

Gene: Quby_101 Start: 61285, Stop: 61566, Start Num: 41

Candidate Starts for Quby_101:

(36, 61273), (Start: 39 @61282 has 2 MA's), (Start: 41 @61285 has 2 MA's), (60, 61339), (80, 61429), (85, 61453), (94, 61495), (99, 61525),

Gene: QuincyRose_3 Start: 452, Stop: 706, Start Num: 37

Candidate Starts for QuincyRose_3:

(15, 227), (26, 326), (Start: 37 @452 has 88 MA's), (Start: 54 @473 has 1 MA's), (63, 521), (68, 539), (70, 545), (81, 593), (84, 611), (85, 614), (88, 632), (90, 644), (94, 656), (98, 677),

Gene: Ramen_3 Start: 476, Stop: 730, Start Num: 37

Candidate Starts for Ramen_3:

(26, 350), (Start: 37 @476 has 88 MA's), (Start: 54 @497 has 1 MA's), (63, 545), (68, 563), (70, 569), (81, 617), (84, 635), (85, 638), (88, 656), (90, 668), (94, 680), (98, 701),

Gene: Rando14_2 Start: 304, Stop: 549, Start Num: 48

Candidate Starts for Rando14_2:

(Start: 48 @304 has 45 MA's), (Start: 54 @316 has 1 MA's), (68, 382), (70, 388), (81, 436), (85, 457), (88, 475), (91, 490), (96, 505), (100, 529),

Gene: Rapunzel97_3 Start: 476, Stop: 730, Start Num: 37

Candidate Starts for Rapunzel97_3:

(26, 350), (Start: 37 @476 has 88 MA's), (Start: 54 @497 has 1 MA's), (63, 545), (68, 563), (70, 569), (81, 617), (84, 635), (85, 638), (88, 656), (90, 668), (94, 680), (98, 701),

Gene: Reptar3000_2 Start: 250, Stop: 480, Start Num: 48

Candidate Starts for Reptar3000_2:

(Start: 48 @250 has 45 MA's), (77, 355), (78, 364), (81, 379), (82, 382), (83, 391), (90, 421), (102, 472), (104, 475),

Gene: Richo_3 Start: 469, Stop: 732, Start Num: 45

Candidate Starts for Richo_3:

(1, 1), (2, 7), (4, 91), (8, 154), (26, 331), (Start: 45 @469 has 5 MA's), (70, 556), (82, 607), (98, 691),

Gene: Rosmarinus_3 Start: 476, Stop: 730, Start Num: 37

Candidate Starts for Rosmarinus_3:

(26, 350), (Start: 37 @476 has 88 MA's), (Start: 54 @497 has 1 MA's), (61, 536), (63, 545), (68, 563), (70, 569), (81, 617), (85, 638), (88, 656), (94, 680), (98, 701),

Gene: Ruthiejr_2 Start: 251, Stop: 481, Start Num: 48

Candidate Starts for Ruthiejr_2:

(Start: 48 @251 has 45 MA's), (53, 260), (77, 356), (81, 380), (82, 383), (83, 392), (90, 422), (102, 473),

Gene: SamScheppers_2 Start: 250, Stop: 480, Start Num: 48

Candidate Starts for SamScheppers_2:

(Start: 48 @250 has 45 MA's), (77, 355), (78, 364), (81, 379), (82, 382), (83, 391), (90, 421), (102, 472),

Gene: SamuelLPlaqson_3 Start: 440, Stop: 694, Start Num: 37

Candidate Starts for SamuelLPlaqson_3:

(15, 215), (26, 314), (Start: 37 @440 has 88 MA's), (Start: 54 @461 has 1 MA's), (61, 500), (68, 527), (70, 533), (81, 581), (84, 599), (88, 620), (90, 632), (98, 665),

Gene: Scarlett_2 Start: 346, Stop: 612, Start Num: 44

Candidate Starts for Scarlett_2:

(22, 187), (Start: 44 @346 has 4 MA's), (82, 487), (88, 523), (91, 538),

Gene: Shadow1_2 Start: 396, Stop: 665, Start Num: 42

Candidate Starts for Shadow1_2:

(Start: 30 @330 has 1 MA's), (Start: 42 @396 has 15 MA's),

Gene: Shaobing_3 Start: 469, Stop: 732, Start Num: 45

Candidate Starts for Shaobing_3:

(1, 1), (2, 7), (4, 91), (8, 154), (26, 331), (Start: 45 @469 has 5 MA's), (70, 556), (82, 607), (98, 691),

Gene: ShedlockHolmes_91 Start: 56212, Stop: 56475, Start Num: 47

Candidate Starts for ShedlockHolmes_91:

(Start: 47 @56212 has 11 MA's), (58, 56242), (64, 56278), (65, 56284), (75, 56311), (79, 56335), (81, 56347), (86, 56371), (88, 56383), (94, 56407), (98, 56434), (101, 56452),

Gene: Sheng711_102 Start: 61477, Stop: 61761, Start Num: 39

Candidate Starts for Sheng711_102:

(36, 61468), (Start: 39 @61477 has 2 MA's), (Start: 41 @61480 has 2 MA's), (60, 61534), (80, 61624), (85, 61648), (94, 61690), (99, 61720),

Gene: ShiaSurprise_3 Start: 476, Stop: 730, Start Num: 37

Candidate Starts for ShiaSurprise_3:

(26, 350), (Start: 37 @476 has 88 MA's), (Start: 54 @497 has 1 MA's), (61, 536), (63, 545), (68, 563), (70, 569), (81, 617), (85, 638), (88, 656), (94, 680), (98, 701),

Gene: SirPhilip_3 Start: 468, Stop: 731, Start Num: 46

Candidate Starts for SirPhilip_3:

(Start: 46 @468 has 2 MA's), (Start: 49 @471 has 1 MA's), (82, 606), (88, 642), (91, 657), (98, 690),

Gene: Slarp_2 Start: 251, Stop: 481, Start Num: 48

Candidate Starts for Slarp_2:

(Start: 48 @251 has 45 MA's), (77, 356), (78, 365), (81, 380), (82, 383), (83, 392), (90, 422), (102, 473),

Gene: Slimphazie_3 Start: 476, Stop: 730, Start Num: 37

Candidate Starts for Slimphazie_3:

(26, 350), (Start: 37 @476 has 88 MA's), (Start: 54 @497 has 1 MA's), (63, 545), (68, 563), (70, 569), (81, 617), (84, 635), (85, 638), (88, 656), (90, 668), (94, 680), (98, 701),

Gene: SoSeph_2 Start: 296, Stop: 541, Start Num: 48

Candidate Starts for SoSeph_2:

(Start: 48 @296 has 45 MA's), (65, 368), (68, 374), (70, 380), (79, 416), (81, 428), (85, 449), (87, 455), (88, 467), (98, 512),

Gene: Spock_3 Start: 476, Stop: 730, Start Num: 37

Candidate Starts for Spock_3:

(26, 350), (Start: 37 @476 has 88 MA's), (Start: 54 @497 has 1 MA's), (61, 536), (63, 545), (68, 563), (70, 569), (81, 617), (85, 638), (88, 656), (94, 680), (98, 701),

Gene: Stinson_3 Start: 452, Stop: 706, Start Num: 37

Candidate Starts for Stinson_3:

(12, 197), (15, 227), (26, 326), (Start: 37 @452 has 88 MA's), (Start: 54 @473 has 1 MA's), (61, 512), (68, 539), (81, 593), (85, 614), (88, 632), (96, 662), (98, 677),

Gene: Sulley_3 Start: 476, Stop: 730, Start Num: 37

Candidate Starts for Sulley_3:

(18, 278), (26, 350), (Start: 37 @476 has 88 MA's), (Start: 54 @497 has 1 MA's), (63, 545), (68, 563), (70, 569), (81, 617), (84, 635), (85, 638), (88, 656), (90, 668), (94, 680), (98, 701),

Gene: Sunflower1121_2 Start: 329, Stop: 664, Start Num: 30

Candidate Starts for Sunflower1121_2:

(Start: 30 @329 has 1 MA's), (Start: 42 @395 has 15 MA's),

Gene: Syra333_3 Start: 509, Stop: 769, Start Num: 42

Candidate Starts for Syra333_3:

(Start: 42 @509 has 15 MA's), (70, 593), (82, 644), (98, 728),

Gene: TBond007_85 Start: 55787, Stop: 56050, Start Num: 47

Candidate Starts for TBond007_85:

(Start: 47 @55787 has 11 MA's), (58, 55817), (60, 55835), (64, 55853), (65, 55859), (75, 55886), (79, 55910), (80, 55919), (81, 55922), (86, 55946), (88, 55958), (94, 55982), (98, 56009), (101, 56027),

Gene: TClif_2 Start: 240, Stop: 494, Start Num: 52

Candidate Starts for TClif_2:

(Start: 52 @240 has 1 MA's), (67, 318), (69, 324), (75, 339), (79, 363), (82, 378), (89, 420), (94, 435), (98, 453),

Gene: Tachez_3 Start: 452, Stop: 706, Start Num: 37

Candidate Starts for Tachez_3:

(15, 227), (26, 326), (Start: 37 @452 has 88 MA's), (Start: 54 @473 has 1 MA's), (63, 521), (68, 539), (70, 545), (78, 578), (81, 593), (84, 611), (85, 614), (88, 632), (90, 644), (94, 656), (98, 677),

Gene: Taheera_60 Start: 40724, Stop: 40945, Start Num: 45

Candidate Starts for Taheera_60:

(Start: 45 @40724 has 5 MA's), (68, 40808), (74, 40823), (81, 40865), (93, 40925),

Gene: TaiwanKao_3 Start: 452, Stop: 706, Start Num: 37

Candidate Starts for TaiwanKao_3:

(15, 227), (26, 326), (Start: 37 @452 has 88 MA's), (Start: 54 @473 has 1 MA's), (63, 521), (68, 539), (70, 545), (81, 593), (84, 611), (85, 614), (88, 632), (94, 656), (98, 677),

Gene: Taquito_2 Start: 251, Stop: 481, Start Num: 48

Candidate Starts for Taquito_2:

(Start: 48 @251 has 45 MA's), (77, 356), (78, 365), (81, 380), (82, 383), (83, 392), (90, 422), (102, 473),

Gene: Terror_60 Start: 40724, Stop: 40945, Start Num: 45

Candidate Starts for Terror_60:

(Start: 45 @40724 has 5 MA's), (68, 40808), (74, 40823), (81, 40865), (93, 40925),

Gene: ThulaThula_78 Start: 49203, Stop: 49487, Start Num: 48
Candidate Starts for ThulaThula_78:
(Start: 48 @49203 has 45 MA's), (78, 49329), (97, 49431), (100, 49440),

Gene: Thyatira_2 Start: 275, Stop: 520, Start Num: 48
Candidate Starts for Thyatira_2:
(Start: 48 @275 has 45 MA's), (65, 347), (68, 353), (70, 359), (79, 395), (81, 407), (85, 428), (87, 434),
(88, 446), (98, 491),

Gene: Tierra_2 Start: 395, Stop: 655, Start Num: 42
Candidate Starts for Tierra_2:
(23, 248), (Start: 42 @395 has 15 MA's), (70, 479), (82, 530),

Gene: Tigress9_3 Start: 500, Stop: 760, Start Num: 42
Candidate Starts for Tigress9_3:
(Start: 42 @500 has 15 MA's), (70, 584), (82, 635), (98, 719),

Gene: TingHuaYa_3 Start: 447, Stop: 701, Start Num: 37
Candidate Starts for TingHuaYa_3:
(15, 225), (26, 321), (Start: 37 @447 has 88 MA's), (Start: 54 @468 has 1 MA's), (65, 528), (68, 534),
(70, 540), (81, 588), (84, 606), (85, 609), (88, 627),

Gene: TiniBug_3 Start: 440, Stop: 694, Start Num: 37
Candidate Starts for TiniBug_3:
(15, 215), (26, 314), (Start: 37 @440 has 88 MA's), (Start: 54 @461 has 1 MA's), (61, 500), (68, 527),
(70, 533), (81, 581), (84, 599), (88, 620), (90, 632), (98, 665),

Gene: Tiri_3 Start: 452, Stop: 706, Start Num: 37
Candidate Starts for Tiri_3:
(Start: 37 @452 has 88 MA's), (Start: 54 @473 has 1 MA's), (63, 521), (68, 539), (70, 545), (78, 578),
(81, 593), (84, 611), (85, 614), (88, 632), (90, 644), (94, 656), (98, 677),

Gene: Topper_3 Start: 476, Stop: 730, Start Num: 37
Candidate Starts for Topper_3:
(26, 350), (Start: 37 @476 has 88 MA's), (Start: 54 @497 has 1 MA's), (61, 536), (63, 545), (68, 563),
(70, 569), (81, 617), (85, 638), (88, 656), (94, 680), (98, 701),

Gene: TreyKay_3 Start: 452, Stop: 706, Start Num: 37
Candidate Starts for TreyKay_3:
(15, 227), (26, 326), (Start: 37 @452 has 88 MA's), (Start: 54 @473 has 1 MA's), (63, 521), (68, 539),
(70, 545), (81, 593), (84, 611), (85, 614), (88, 632), (94, 656), (98, 677),

Gene: TribbleTrouble_91 Start: 58049, Stop: 58294, Start Num: 48
Candidate Starts for TribbleTrouble_91:
(Start: 48 @58049 has 45 MA's), (Start: 54 @58061 has 1 MA's), (71, 58124), (85, 58193), (91, 58226),
(98, 58259),

Gene: TruffulaTree_3 Start: 476, Stop: 730, Start Num: 37
Candidate Starts for TruffulaTree_3:
(26, 350), (Start: 37 @476 has 88 MA's), (Start: 54 @497 has 1 MA's), (61, 536), (63, 545), (68, 563),
(70, 569), (81, 617), (84, 635), (85, 638), (88, 656), (90, 668), (94, 680), (98, 701),

Gene: Twitch_3 Start: 476, Stop: 730, Start Num: 37

Candidate Starts for Twitch_3:

(26, 350), (Start: 37 @476 has 88 MA's), (Start: 54 @497 has 1 MA's), (61, 536), (63, 545), (68, 563), (70, 569), (81, 617), (85, 638), (88, 656), (94, 680), (98, 701),

Gene: Unicorn_2 Start: 389, Stop: 649, Start Num: 42

Candidate Starts for Unicorn_2:

(23, 242), (Start: 42 @389 has 15 MA's),

Gene: Urkel_3 Start: 440, Stop: 694, Start Num: 37

Candidate Starts for Urkel_3:

(15, 215), (26, 314), (Start: 37 @440 has 88 MA's), (Start: 54 @461 has 1 MA's), (61, 500), (68, 527), (70, 533), (81, 581), (84, 599), (88, 620), (90, 632), (98, 665),

Gene: Validus_4 Start: 682, Stop: 942, Start Num: 40

Candidate Starts for Validus_4:

(Start: 40 @682 has 1 MA's), (62, 736), (79, 802), (82, 817), (98, 901),

Gene: Veliki_3 Start: 476, Stop: 730, Start Num: 37

Candidate Starts for Veliki_3:

(26, 350), (Start: 37 @476 has 88 MA's), (Start: 54 @497 has 1 MA's), (63, 545), (68, 563), (70, 569), (81, 617), (85, 638), (88, 656), (94, 680), (98, 701),

Gene: Waterfoul_2 Start: 296, Stop: 541, Start Num: 48

Candidate Starts for Waterfoul_2:

(Start: 48 @296 has 45 MA's), (65, 368), (68, 374), (70, 380), (79, 416), (81, 428), (85, 449), (87, 455), (88, 467), (98, 512),

Gene: Wintermute_2 Start: 250, Stop: 480, Start Num: 48

Candidate Starts for Wintermute_2:

(Start: 48 @250 has 45 MA's), (53, 259), (77, 355), (81, 379), (82, 382), (83, 391), (90, 421), (102, 472),

Gene: Ximenita_3 Start: 509, Stop: 769, Start Num: 42

Candidate Starts for Ximenita_3:

(Start: 42 @509 has 15 MA's), (58, 533), (70, 593), (82, 644), (98, 728),

Gene: Y10_02 Start: 251, Stop: 481, Start Num: 48

Candidate Starts for Y10_02:

(Start: 48 @251 has 45 MA's), (53, 260), (77, 356), (81, 380), (82, 383), (83, 392), (90, 422), (102, 473),

Gene: Y2_02 Start: 251, Stop: 481, Start Num: 48

Candidate Starts for Y2_02:

(Start: 48 @251 has 45 MA's), (53, 260), (77, 356), (81, 380), (82, 383), (83, 392), (90, 422), (102, 473),

Gene: YasnayaPolyana_2 Start: 251, Stop: 481, Start Num: 48

Candidate Starts for YasnayaPolyana_2:

(Start: 48 @251 has 45 MA's), (53, 260), (77, 356), (81, 380), (82, 383), (83, 392), (90, 422), (102, 473),

Gene: YoureAdopted_3 Start: 452, Stop: 706, Start Num: 37

Candidate Starts for YoureAdopted_3:

(15, 227), (26, 326), (Start: 37 @452 has 88 MA's), (Start: 54 @473 has 1 MA's), (63, 521), (68, 539), (70, 545), (81, 593), (84, 611), (85, 614), (88, 632), (94, 656), (98, 677),

Gene: Yuna_3 Start: 525, Stop: 797, Start Num: 43

Candidate Starts for Yuna_3:

(7, 201), (25, 378), (Start: 43 @525 has 1 MA's), (72, 627), (79, 657), (98, 756),

Gene: Yunkel11_3 Start: 445, Stop: 702, Start Num: 37

Candidate Starts for Yunkel11_3:

(26, 325), (Start: 37 @445 has 88 MA's), (Start: 54 @466 has 1 MA's), (61, 505), (68, 532), (70, 538), (78, 571), (81, 586), (84, 604), (85, 607), (88, 625), (98, 673),

Gene: Zabiza_3 Start: 476, Stop: 730, Start Num: 37

Candidate Starts for Zabiza_3:

(26, 350), (Start: 37 @476 has 88 MA's), (Start: 54 @497 has 1 MA's), (63, 545), (68, 563), (70, 569), (81, 617), (84, 635), (85, 638), (88, 656), (90, 668), (94, 680), (98, 701),

Gene: Zavala_3 Start: 452, Stop: 706, Start Num: 37

Candidate Starts for Zavala_3:

(15, 227), (26, 326), (Start: 37 @452 has 88 MA's), (Start: 54 @473 has 1 MA's), (63, 521), (68, 539), (70, 545), (81, 593), (84, 611), (85, 614), (88, 632), (90, 644), (94, 656), (98, 677),