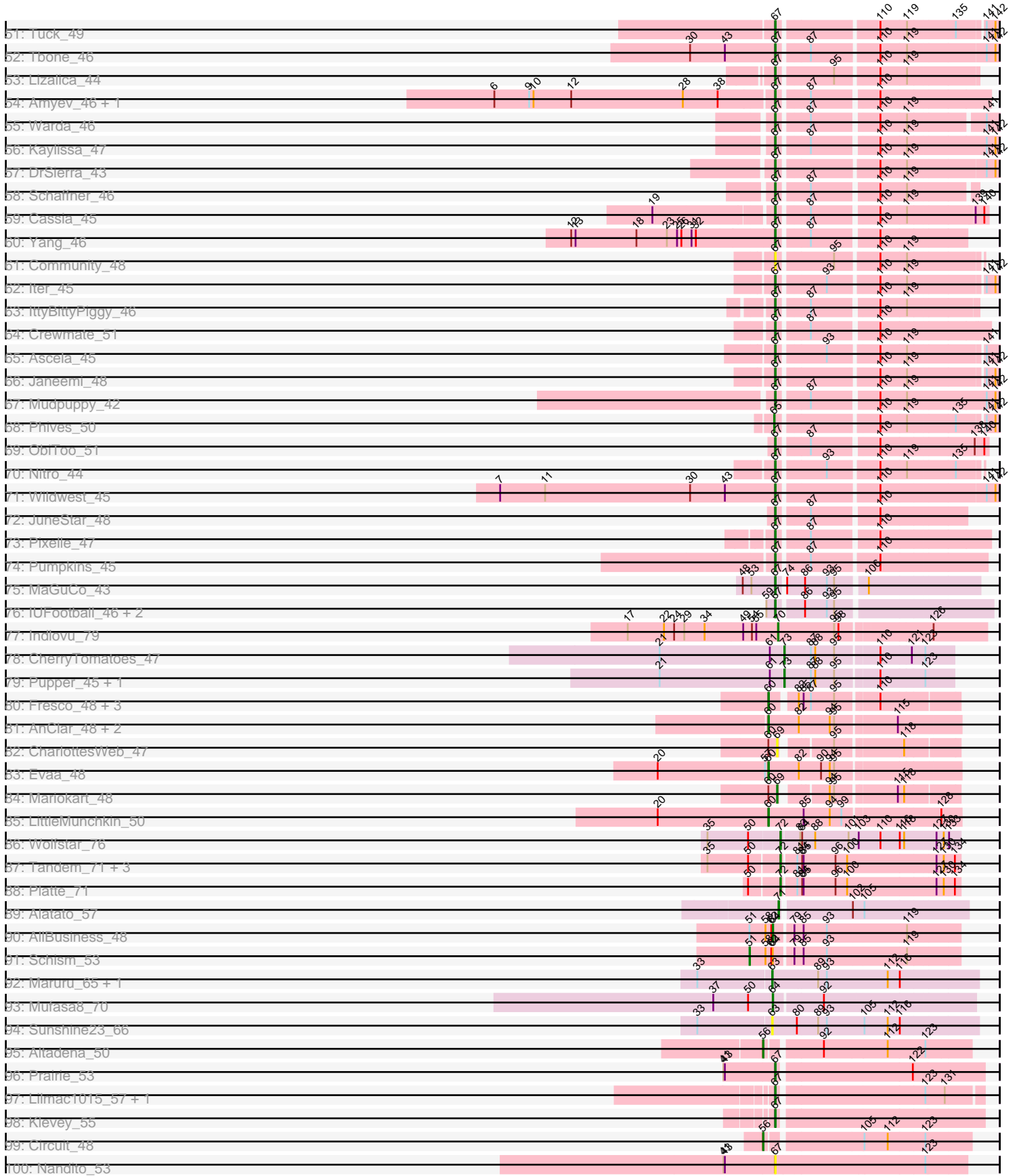


Pham 294431



Pham 294431



Note: Tracks are now grouped by subcluster and scaled. Switching in subcluster is indicated by changes in track color. Track scale is now set by default to display the region 30 bp upstream of start 1 to 30 bp downstream of the last possible start. If this default region is judged to be packed too tightly with annotated starts, the track will be further scaled to only show that region of the ORF with annotated starts. This action will be indicated by adding "Zoomed" to the title. For starts, yellow indicates the location of called starts comprised solely of Glimmer/GeneMark auto-annotations, green indicates the location of called starts with at least 1 manual gene annotation.

Pham 294431 Report

This analysis was run 04/18/26 on database version 643.

Pham number 294431 has 211 members, 45 are drafts.

Phages represented in each track:

- Track 1 : StAugustine_140
- Track 2 : Causa_142
- Track 3 : Basilisk_31
- Track 4 : Ruchi_30
- Track 5 : Chickaboom_31
- Track 6 : WileyE_31
- Track 7 : Vulpecula_30
- Track 8 : Abidatro_30
- Track 9 : Brynnie_30
- Track 10 : Antrice_35
- Track 11 : Zhuangyuan_35
- Track 12 : Cygnet_32
- Track 13 : LittleTokyo_33
- Track 14 : PhluffyCoco_31, Atlantica_31, RedFox_31, AdoptaAdorbs_30, HamCheese_31, Camara_31, Glotell_32, Laphuphu24k_30, Amphitrite_31, Fingolfin_31, AmiCi24_30, Juno112_30, Oppalora_30, Rattail_31, DanHam62_31
- Track 15 : AlexMinion_33
- Track 16 : Babushka_28, Renna12_30
- Track 17 : Andrew_32
- Track 18 : KHumphrey_31
- Track 19 : Leona_30
- Track 20 : Hillester_80, Lasker_78, BasketStar_76, DarwinJr_81, RadFad_81, Crescenzo_81
- Track 21 : Ding_76
- Track 22 : Raphaella_77, Mapleville_72, Kabloowy_76, Hestia_70, AdaS_72, Faja_79, YoungHarleezy_76, BenchScraper_76, JellyBread_73, CookieBear_75, Sporco_78
- Track 23 : Aikyam_75, Gorpy_74, SonDevVon_83, MaterMagnus_76, Sakai_73
- Track 24 : BlueShadow_74
- Track 25 : CosmicBrownie_73
- Track 26 : Persistence_70
- Track 27 : Anekin_78
- Track 28 : Windest_80, BillyTP_77, Lawnathon_78
- Track 29 : JakeTheSnake_79
- Track 30 : Isolde_74
- Track 31 : SpicyFrank_78, MidnightRain_81
- Track 32 : GumGum_81

- Track 33 : Raqqa_74
- Track 34 : Globfish_76, ThayneTheZag_81, EvePickles_75
- Track 35 : LeBruni_79
- Track 36 : Tiff81_72
- Track 37 : Richie_79
- Track 38 : MurphyJoseph_72
- Track 39 : Seahorse_84
- Track 40 : Phrank15_80
- Track 41 : MUWow_78
- Track 42 : Shukran_73
- Track 43 : Bhageatrice_80
- Track 44 : Sashimi_74
- Track 45 : Auxilium_74
- Track 46 : NewKitty_78
- Track 47 : AbbyDaisy_79
- Track 48 : ThursdayNight_48
- Track 49 : Simpson_48, JohnDoe_46, Joemato_46, Flutur_45
- Track 50 : Tutumahutu_47, Powerpuff_48, AGrandiflora_48, Cyan_46, Lego_45, YesChef_46
- Track 51 : Tuck_49
- Track 52 : Tbone_46
- Track 53 : Lizalica_44
- Track 54 : Amyev_46, Tian_45
- Track 55 : Warda_46
- Track 56 : Kaylissa_47
- Track 57 : DrSierra_43
- Track 58 : Schaffner_46
- Track 59 : Cassia_45
- Track 60 : Yang_46
- Track 61 : Community_48
- Track 62 : lter_45
- Track 63 : IttyBittyPiggy_46
- Track 64 : Crewmate_51
- Track 65 : Ascela_45
- Track 66 : Janeemi_48
- Track 67 : Mudpuppy_42
- Track 68 : Phives_50
- Track 69 : ObiToo_51
- Track 70 : Nitro_44
- Track 71 : Wildwest_45
- Track 72 : JuneStar_48
- Track 73 : Pixelle_47
- Track 74 : Pumpkins_45
- Track 75 : MaGuCo_43
- Track 76 : IUFootball_46, Liebe_46, Maureen_46
- Track 77 : Indlovu_79
- Track 78 : CherryTomatoes_47
- Track 79 : Pupper_45, SCentae_45
- Track 80 : Fresco_48, Axumite_48, Ligma_48, Shatter_48
- Track 81 : AnClar_48, Sisko_47, Yago84_47
- Track 82 : CharlottesWeb_47
- Track 83 : Evaa_48
- Track 84 : Mariokart_48

- Track 85 : LittleMunchkin_50
- Track 86 : Wolfstar_76
- Track 87 : Tandem_71, Pioneer3_71, Hortus1_71, OlinDD_71
- Track 88 : Platte_71
- Track 89 : Alatato_57
- Track 90 : AllBusiness_48
- Track 91 : Schism_53
- Track 92 : Maruru_65, Sonali_65
- Track 93 : Mufasa8_70
- Track 94 : Sunshine23_66
- Track 95 : Altadena_50
- Track 96 : Prairie_53
- Track 97 : Lilmac1015_57, CalWood4100_57
- Track 98 : Klevey_55
- Track 99 : Circuit_48
- Track 100 : Nandito_53
- Track 101 : Bolt007_53
- Track 102 : Bumble_49
- Track 103 : Vitus_45
- Track 104 : Hirko_43
- Track 105 : Vibaki_44, GoldDust_45, Gooberta_45
- Track 106 : Music_44
- Track 107 : BlackSpider_65
- Track 108 : Zucker_73
- Track 109 : Cassini_73
- Track 110 : BellaJr_70
- Track 111 : Bagrid_145, Kalah2_135, Optimus_135, Schatzie_140, Duke13_140, Halley_146, Wanda_144, ThreeRngTarjay_139, BAKA_144, EricMillard_136, Constella_138, Dove_130, Dallas_145, NihilNomen_146, JuicyJay_140, Odette_148, DmpstrDiver_145, Beem_146, Ejimix_137, Minerva_144, Hughesyang_143, Klein_142, Phoebus_144, Zelink_139, Bombitas_132
- Track 112 : HokkenD_137, Redno2_139, MiaZeal_143, Lucky2013_136, Porcelain_140, Yeet_138, KashFlow_143
- Track 113 : Bobby_134, Hidrated_130, Marleymoo_127
- Track 114 : Pound_136
- Track 115 : Thibault_127
- Track 116 : Footloose_58

Summary of Final Annotations (See graph section above for start numbers):

The start number called the most often in the published annotations is 67, it was called in 59 of the 166 non-draft genes in the pham.

Genes that call this "Most Annotated" start:

- AGrandiflora_48, Abidatro_30, AdoptaAdorbs_30, AlexMinion_33, AmiCi24_30, Amphitrite_31, Amyev_46, Andrew_32, Ascela_45, Atlantica_31, Babushka_28, Basilisk_31, Bolt007_53, Brynnie_30, CalWood4100_57, Camara_31, Cassia_45, Community_48, Crewmate_51, Cyan_46, DanHam62_31, DrSierra_43, Fingolfin_31, Flutur_45, Glotell_32, GoldDust_45, Gooberta_45, HamCheese_31, Hirko_43, IUFootball_46, Iter_45, IttyBittyPiggy_46, Janeemi_48, Joemato_46, JohnDoe_46,

JuneStar_48, Juno112_30, Kaylissa_47, Klevey_55, Laphuphu24k_30, Lego_45, Leona_30, Liebe_46, Lilmac1015_57, LittleTokyo_33, Lizalica_44, MaGuCo_43, Maureen_46, Mudpuppy_42, Music_44, Nandito_53, Nitro_44, ObiToo_51, Oppalora_30, PhluffyCoco_31, Pixelle_47, Powerpuff_48, Prairie_53, Pumpkins_45, Rattail_31, RedFox_31, Renna12_30, Ruchi_30, Schaffner_46, Simpson_48, Tbone_46, ThursdayNight_48, Tian_45, Tuck_49, Tutumahutu_47, Vibaki_44, Vitus_45, Vulpecula_30, Warda_46, Wildwest_45, WileyE_31, Yang_46, YesChef_46,

Genes that have the "Most Annotated" start but do not call it:

- Chickaboom_31, KHumphrey_31,

Genes that do not have the "Most Annotated" start:

- AbbyDaisy_79, AdaS_72, Aikyam_75, Alatato_57, AllBusiness_48, Altadena_50, AnClar_48, Anekin_78, Antrice_35, Auxilium_74, Axumite_48, BAKA_144, Bagrid_145, BasketStar_76, Beem_146, BellaJr_70, BenchScraper_76, Bhageatrice_80, BillyTP_77, BlackSpider_65, BlueShadow_74, Bobby_134, Bombitas_132, Bumble_49, Cassini_73, Causa_142, CharlottesWeb_47, CherryTomatoes_47, Circuit_48, Constella_138, CookieBear_75, CosmicBrownie_73, Crescenzo_81, Cygnet_32, Dallas_145, DarwinJr_81, Ding_76, DmpstrDiver_145, Dove_130, Duke13_140, Ejimix_137, EricMillard_136, Evaa_48, EvePickles_75, Faja_79, Footloose_58, Fresco_48, Globfish_76, Gorpy_74, GumGum_81, Halley_146, Hestia_70, Hidrated_130, Hillester_80, HokkenD_137, Hortus1_71, Hughesyang_143, Indlovu_79, Isolde_74, JakeTheSnake_79, JellyBread_73, JuicyJay_140, Kabloowy_76, Kalah2_135, KashFlow_143, Klein_142, Lasker_78, Lawnathon_78, LeBruni_79, Ligma_48, LittleMunchkin_50, Lucky2013_136, MUWow_78, Mapleville_72, Mariokart_48, Marleymoo_127, Maruru_65, MaterMagnus_76, MiaZeal_143, MidnightRain_81, Minerva_144, Mufasa8_70, MurphyJoseph_72, NewKitty_78, NihilNomen_146, Odette_148, OlinDD_71, Optimus_135, Persistence_70, Phives_50, Phoebus_144, Phrank15_80, Pioneer3_71, Platte_71, Porcelain_140, Pound_136, Pupper_45, RadFad_81, Raphaella_77, Raqqa_74, Redno2_139, Richie_79, SCentae_45, Sakai_73, Sashimi_74, Schatzie_140, Schism_53, Seahorse_84, Shatter_48, Shukran_73, Sisko_47, SonDevVon_83, Sonali_65, SpicyFrank_78, Sporco_78, StAugustine_140, Sunshine23_66, Tandem_71, ThayneTheZag_81, Thibault_127, ThreeRngTarjay_139, Tiff81_72, Wanda_144, Windest_80, Wolfstar_76, Yago84_47, Yeet_138, YoungHarleezy_76, Zelink_139, Zhuangyuan_35, Zucker_73,

Summary by start number:

Start 51:

- Found in 2 of 211 (0.9%) of genes in pham
- Manual Annotations of this start: 1 of 166
- Called 50.0% of time when present
- Phage (with cluster) where this start called: Schism_53 (FF),

Start 56:

- Found in 6 of 211 (2.8%) of genes in pham
- Manual Annotations of this start: 6 of 166
- Called 100.0% of time when present
- Phage (with cluster) where this start called: Altadena_50 (FH), Antrice_35 (AS2), Bumble_49 (FH), Circuit_48 (FH), Cygnet_32 (AS2), Zhuangyuan_35 (AS2),

Start 60:

- Found in 14 of 211 (6.6%) of genes in pham
- Manual Annotations of this start: 10 of 166
- Called 71.4% of time when present
- Phage (with cluster) where this start called: AnClar_48 (DR), Axumite_48 (DR), Evaa_48 (DR), Footloose_58 (singleton), Fresco_48 (DR), Ligma_48 (DR), LittleMunchkin_50 (DR), Shatter_48 (DR), Sisko_47 (DR), Yago84_47 (DR),

Start 63:

- Found in 3 of 211 (1.4%) of genes in pham
- Manual Annotations of this start: 2 of 166
- Called 100.0% of time when present
- Phage (with cluster) where this start called: Maruru_65 (FG), Sonali_65 (FG), Sunshine23_66 (FG),

Start 64:

- Found in 4 of 211 (1.9%) of genes in pham
- Manual Annotations of this start: 2 of 166
- Called 50.0% of time when present
- Phage (with cluster) where this start called: AllBusiness_48 (FF), Mufasa8_70 (FG),

Start 65:

- Found in 2 of 211 (0.9%) of genes in pham
- Manual Annotations of this start: 1 of 166
- Called 50.0% of time when present
- Phage (with cluster) where this start called: Phives_50 (AZ1),

Start 66:

- Found in 37 of 211 (17.5%) of genes in pham
- Manual Annotations of this start: 33 of 166
- Called 100.0% of time when present
- Phage (with cluster) where this start called: BAKA_144 (J), Bagrid_145 (J), Beem_146 (J), Bobby_134 (J), Bombitas_132 (J), Constella_138 (J), Dallas_145 (J), DmpstrDiver_145 (J), Dove_130 (J), Duke13_140 (J), Ejimix_137 (J), EricMillard_136 (J), Halley_146 (J), Hidrated_130 (J), HokkenD_137 (J), Hughesyang_143 (J), JuicyJay_140 (J), Kalah2_135 (J), KashFlow_143 (J), Klein_142 (J), Lucky2013_136 (J), Marleymoo_127 (J), MiaZeal_143 (J), Minerva_144 (J), NihilNomen_146 (J), Odette_148 (J), Optimus_135 (J), Phoebus_144 (J), Porcelain_140 (J), Pound_136 (J), Redno2_139 (J), Schatzie_140 (J), Thibault_127 (J), ThreeRngTarjay_139 (J), Wanda_144 (J), Yeet_138 (J), Zelink_139 (J),

Start 67:

- Found in 80 of 211 (37.9%) of genes in pham
- Manual Annotations of this start: 59 of 166
- Called 97.5% of time when present
- Phage (with cluster) where this start called: AGrandiflora_48 (AZ1), Abidatro_30 (AS1), AdoptaAdorbs_30 (AS3), AlexMinion_33 (AS3), AmiCi24_30 (AS3), Amphitrite_31 (AS3), Amyev_46 (AZ1), Andrew_32 (AS3), Ascela_45 (AZ1), Atlantica_31 (AS3), Babushka_28 (AS3), Basilisk_31 (AS1), Bolt007_53 (FH), Brynnie_30 (AS1), CalWood4100_57 (FH), Camara_31 (AS3), Cassia_45 (AZ1), Community_48 (AZ1), Crewmate_51 (AZ1), Cyan_46 (AZ1), DanHam62_31 (AS3), DrSierra_43 (AZ1), Fingolfin_31 (AS3), Flutur_45 (AZ), Glotell_32 (AS3), GoldDust_45 (FL), Gooberta_45 (FL), HamCheese_31 (AS3), Hirko_43 (FL),

IUFootball_46 (AZ2), Iter_45 (AZ1), IttyBittyPiggy_46 (AZ1), Janeemi_48 (AZ1), Joemato_46 (AZ1), JohnDoe_46 (AZ1), JuneStar_48 (AZ1), Juno112_30 (AS3), Kaylissa_47 (AZ1), Klevey_55 (FH), Laphuphu24k_30 (AS3), Lego_45 (AZ1), Leona_30 (AS3), Liebe_46 (AZ2), Lilmac1015_57 (FH), LittleTokyo_33 (AS2), Lizalica_44 (AZ1), MaGuCo_43 (AZ2), Maureen_46 (AZ2), Mudpuppy_42 (AZ1), Music_44 (FL), Nandito_53 (FH), Nitro_44 (AZ1), ObiToo_51 (AZ1), Oppalora_30 (AS3), PhluffyCoco_31 (AS3), Pixelle_47 (AZ1), Powerpuff_48 (AZ1), Prairie_53 (FH), Pumpkins_45 (AZ1), Rattail_31 (AS3), RedFox_31 (AS3), Renna12_30 (AS3), Ruchi_30 (AS1), Schaffner_46 (AZ1), Simpson_48 (AZ1), Tbone_46 (AZ1), ThursdayNight_48 (AZ), Tian_45 (AZ1), Tuck_49 (AZ1), Tutumahutu_47 (AZ1), Vibaki_44 (FL), Vitus_45 (FL), Vulpecula_30 (AS1), Warda_46 (AZ1), Wildwest_45 (AZ1), WileyE_31 (AS1), Yang_46 (AZ1), YesChef_46 (AZ1),

Start 68:

- Found in 2 of 211 (0.9%) of genes in pham
- Manual Annotations of this start: 2 of 166
- Called 100.0% of time when present
- Phage (with cluster) where this start called: Causa_142 (AI), StAugustine_140 (AI),

Start 69:

- Found in 2 of 211 (0.9%) of genes in pham
- Manual Annotations of this start: 1 of 166
- Called 100.0% of time when present
- Phage (with cluster) where this start called: CharlottesWeb_47 (DR), Mariokart_48 (DR),

Start 70:

- Found in 1 of 211 (0.5%) of genes in pham
- Manual Annotations of this start: 1 of 166
- Called 100.0% of time when present
- Phage (with cluster) where this start called: Indlovu_79 (B11),

Start 71:

- Found in 57 of 211 (27.0%) of genes in pham
- Manual Annotations of this start: 37 of 166
- Called 98.2% of time when present
- Phage (with cluster) where this start called: AbbyDaisy_79 (AY), AdaS_72 (AY), Aikyam_75 (AY), Alatato_57 (FB), Anekin_78 (AY), Auxilium_74 (AY), BasketStar_76 (AY), BellaJr_70 (FN), BenchScraper_76 (AY), Bhageatrice_80 (AY), BillyTP_77 (AY), BlackSpider_65 (FN), BlueShadow_74 (AY), Cassini_73 (FN), CookieBear_75 (AY), CosmicBrownie_73 (AY), Crescenzo_81 (AY), DarwinJr_81 (AY), Ding_76 (AY), EvePickles_75 (AY), Faja_79 (AY), Globfish_76 (AY), Gorpy_74 (AY), GumGum_81 (AY), Hestia_70 (AY), Hillester_80 (AY), Isolde_74 (AY), JakeTheSnake_79 (AY), JellyBread_73 (AY), Kabloowy_76 (AY), Lasker_78 (AY), Lawnathon_78 (AY), LeBruni_79 (AY), MUWow_78 (AY), Mapleville_72 (AY), MaterMagnus_76 (AY), MidnightRain_81 (AY), MurphyJoseph_72 (AY), NewKitty_78 (AY), Persistence_70 (AY), Phrank15_80 (AY), RadFad_81 (AY), Raphaella_77 (AY), Richie_79 (AY), Sakai_73 (AY), Sashimi_74 (AY), Seahorse_84 (AY), Shukran_73 (AY), SonDevVon_83 (AY), SpicyFrank_78 (AY), Sporco_78 (AY), ThayneTheZag_81 (AY), Tiff81_72 (AY), Windest_80 (AY), YoungHarleezy_76 (AY), Zucker_73 (FN),

Start 72:

- Found in 8 of 211 (3.8%) of genes in pham

- Manual Annotations of this start: 6 of 166
- Called 75.0% of time when present
- Phage (with cluster) where this start called: Hortus1_71 (ED1), OlinDD_71 (ED1), Pioneer3_71 (ED1), Platte_71 (ED1), Tandem_71 (ED1), Wolfstar_76 (ED),

Start 73:

- Found in 3 of 211 (1.4%) of genes in pham
- Manual Annotations of this start: 3 of 166
- Called 100.0% of time when present
- Phage (with cluster) where this start called: CherryTomatoes_47 (DO), Pupper_45 (DO), SCentae_45 (DO),

Start 75:

- Found in 16 of 211 (7.6%) of genes in pham
- Manual Annotations of this start: 1 of 166
- Called 6.2% of time when present
- Phage (with cluster) where this start called: KHumphrey_31 (AS3),

Start 76:

- Found in 12 of 211 (5.7%) of genes in pham
- Manual Annotations of this start: 1 of 166
- Called 16.7% of time when present
- Phage (with cluster) where this start called: Chickaboom_31 (AS1), Raqqa_74 (AY),

Summary by clusters:

There are 21 clusters represented in this pham: AS3, AS2, AS1, DO, AI, FL, ED, J, singleton, B11, FH, FB, ED1, FF, FG, AY, AZ1, AZ2, AZ, DR, FN,

Info for manual annotations of cluster AI:

- Start number 68 was manually annotated 2 times for cluster AI.

Info for manual annotations of cluster AS1:

- Start number 67 was manually annotated 6 times for cluster AS1.
- Start number 76 was manually annotated 1 time for cluster AS1.

Info for manual annotations of cluster AS2:

- Start number 56 was manually annotated 3 times for cluster AS2.
- Start number 67 was manually annotated 1 time for cluster AS2.

Info for manual annotations of cluster AS3:

- Start number 67 was manually annotated 12 times for cluster AS3.
- Start number 75 was manually annotated 1 time for cluster AS3.

Info for manual annotations of cluster AY:

- Start number 71 was manually annotated 34 times for cluster AY.

Info for manual annotations of cluster AZ1:

- Start number 65 was manually annotated 1 time for cluster AZ1.
- Start number 67 was manually annotated 29 times for cluster AZ1.

Info for manual annotations of cluster AZ2:

- Start number 67 was manually annotated 3 times for cluster AZ2.

Info for manual annotations of cluster B11:

- Start number 70 was manually annotated 1 time for cluster B11.

Info for manual annotations of cluster DO:

- Start number 73 was manually annotated 3 times for cluster DO.

Info for manual annotations of cluster DR:

- Start number 60 was manually annotated 9 times for cluster DR.
- Start number 69 was manually annotated 1 time for cluster DR.

Info for manual annotations of cluster ED:

- Start number 72 was manually annotated 1 time for cluster ED.

Info for manual annotations of cluster ED1:

- Start number 72 was manually annotated 5 times for cluster ED1.

Info for manual annotations of cluster FB:

- Start number 71 was manually annotated 1 time for cluster FB.

Info for manual annotations of cluster FF:

- Start number 51 was manually annotated 1 time for cluster FF.
- Start number 64 was manually annotated 1 time for cluster FF.

Info for manual annotations of cluster FG:

- Start number 63 was manually annotated 2 times for cluster FG.
- Start number 64 was manually annotated 1 time for cluster FG.

Info for manual annotations of cluster FH:

- Start number 56 was manually annotated 3 times for cluster FH.
- Start number 67 was manually annotated 4 times for cluster FH.

Info for manual annotations of cluster FL:

- Start number 67 was manually annotated 4 times for cluster FL.

Info for manual annotations of cluster FN:

- Start number 71 was manually annotated 2 times for cluster FN.

Info for manual annotations of cluster J:

- Start number 66 was manually annotated 33 times for cluster J.

Gene Information:

Gene: AGrandiflora_48 Start: 33790, Stop: 34203, Start Num: 67

Candidate Starts for AGrandiflora_48:

(Start: 67 @33790 has 59 MA's), (87, 33844), (110, 33970), (119, 34024), (141, 34177), (142, 34195),

Gene: AbbyDaisy_79 Start: 44094, Stop: 44489, Start Num: 71

Candidate Starts for AbbyDaisy_79:

(Start: 71 @44094 has 37 MA's), (Start: 76 @44118 has 1 MA's), (84, 44139), (105, 44265), (136, 44463),

Gene: Abidatro_30 Start: 21728, Stop: 21387, Start Num: 67

Candidate Starts for Abidatro_30:

(Start: 67 @21728 has 59 MA's), (Start: 76 @21707 has 1 MA's), (114, 21497), (132, 21401),

Gene: AdaS_72 Start: 39804, Stop: 40205, Start Num: 71

Candidate Starts for AdaS_72:

(Start: 71 @39804 has 37 MA's), (105, 39972), (115, 40041),

Gene: AdoptaAdorbs_30 Start: 21209, Stop: 20868, Start Num: 67

Candidate Starts for AdoptaAdorbs_30:

(Start: 67 @21209 has 59 MA's), (Start: 75 @21191 has 1 MA's),

Gene: Aikyam_75 Start: 40510, Stop: 40911, Start Num: 71

Candidate Starts for Aikyam_75:

(21, 40264), (Start: 71 @40510 has 37 MA's), (105, 40678), (115, 40747),

Gene: Alatato_57 Start: 32552, Stop: 32914, Start Num: 71

Candidate Starts for Alatato_57:

(Start: 71 @32552 has 37 MA's), (102, 32687), (105, 32708),

Gene: AlexMinion_33 Start: 21398, Stop: 21057, Start Num: 67

Candidate Starts for AlexMinion_33:

(Start: 67 @21398 has 59 MA's),

Gene: AllBusiness_48 Start: 35021, Stop: 35380, Start Num: 64

Candidate Starts for AllBusiness_48:

(Start: 51 @34973 has 1 MA's), (58, 35006), (62, 35018), (Start: 64 @35021 has 2 MA's), (79, 35054), (85, 35072), (93, 35120), (119, 35279),

Gene: Altadena_50 Start: 34978, Stop: 35370, Start Num: 56

Candidate Starts for Altadena_50:

(Start: 56 @34978 has 6 MA's), (92, 35077), (112, 35206), (123, 35281),

Gene: AmiCi24_30 Start: 21208, Stop: 20867, Start Num: 67

Candidate Starts for AmiCi24_30:

(Start: 67 @21208 has 59 MA's), (Start: 75 @21190 has 1 MA's),

Gene: Amphitrite_31 Start: 21207, Stop: 20866, Start Num: 67

Candidate Starts for Amphitrite_31:

(Start: 67 @21207 has 59 MA's), (Start: 75 @21189 has 1 MA's),

Gene: Amyev_46 Start: 34828, Stop: 35223, Start Num: 67

Candidate Starts for Amyev_46:

(6, 34264), (9, 34336), (10, 34345), (12, 34423), (28, 34654), (38, 34726), (Start: 67 @34828 has 59 MA's), (87, 34882), (110, 35008),

Gene: AnClar_48 Start: 43435, Stop: 43061, Start Num: 60

Candidate Starts for AnClar_48:

(Start: 60 @43435 has 10 MA's), (82, 43375), (94, 43312), (95, 43303), (115, 43183),

Gene: Andrew_32 Start: 21174, Stop: 20812, Start Num: 67
Candidate Starts for Andrew_32:
(Start: 67 @21174 has 59 MA's), (93, 21087), (113, 20958), (123, 20892),

Gene: Anekin_78 Start: 43082, Stop: 43483, Start Num: 71
Candidate Starts for Anekin_78:
(21, 42836), (Start: 71 @43082 has 37 MA's), (105, 43250), (115, 43319),

Gene: Antrice_35 Start: 22982, Stop: 22596, Start Num: 56
Candidate Starts for Antrice_35:
(Start: 56 @22982 has 6 MA's), (100, 22820), (107, 22775), (108, 22766), (130, 22634),

Gene: Ascela_45 Start: 33111, Stop: 33515, Start Num: 67
Candidate Starts for Ascela_45:
(Start: 67 @33111 has 59 MA's), (93, 33198), (110, 33291), (119, 33345), (141, 33489),

Gene: Atlantica_31 Start: 21209, Stop: 20868, Start Num: 67
Candidate Starts for Atlantica_31:
(Start: 67 @21209 has 59 MA's), (Start: 75 @21191 has 1 MA's),

Gene: Auxilium_74 Start: 40053, Stop: 40418, Start Num: 71
Candidate Starts for Auxilium_74:
(Start: 71 @40053 has 37 MA's), (89, 40116), (95, 40149), (105, 40209), (114, 40272),

Gene: Axumite_48 Start: 41091, Stop: 40741, Start Num: 60
Candidate Starts for Axumite_48:
(Start: 60 @41091 has 10 MA's), (82, 41046), (85, 41037), (87, 41022), (95, 40974), (110, 40893),

Gene: BAKA_144 Start: 76097, Stop: 76450, Start Num: 66
Candidate Starts for BAKA_144:
(Start: 66 @76097 has 33 MA's), (110, 76298), (117, 76340),

Gene: Babushka_28 Start: 21123, Stop: 20782, Start Num: 67
Candidate Starts for Babushka_28:
(Start: 67 @21123 has 59 MA's), (77, 21102),

Gene: Bagrid_145 Start: 76792, Stop: 77145, Start Num: 66
Candidate Starts for Bagrid_145:
(Start: 66 @76792 has 33 MA's), (110, 76993), (117, 77035),

Gene: Basilisk_31 Start: 22679, Stop: 22335, Start Num: 67
Candidate Starts for Basilisk_31:
(Start: 67 @22679 has 59 MA's), (Start: 76 @22658 has 1 MA's), (78, 22652), (85, 22634), (93, 22586),

Gene: BasketStar_76 Start: 42848, Stop: 43237, Start Num: 71
Candidate Starts for BasketStar_76:
(1, 41279), (2, 41414), (3, 41525), (4, 41561), (5, 41624), (8, 42302), (15, 42518), (Start: 71 @42848 has 37 MA's), (100, 42971), (105, 43004), (107, 43019), (115, 43073), (132, 43163),

Gene: Beem_146 Start: 77695, Stop: 78048, Start Num: 66
Candidate Starts for Beem_146:
(Start: 66 @77695 has 33 MA's), (110, 77896), (117, 77938),

Gene: BellaJr_70 Start: 41160, Stop: 41555, Start Num: 71
Candidate Starts for BellaJr_70:
(24, 40953), (Start: 71 @41160 has 37 MA's), (Start: 76 @41184 has 1 MA's), (84, 41205), (100, 41298), (105, 41331), (136, 41529),

Gene: BenchScraper_76 Start: 41215, Stop: 41616, Start Num: 71
Candidate Starts for BenchScraper_76:
(Start: 71 @41215 has 37 MA's), (105, 41383), (115, 41452),

Gene: Bhageatrice_80 Start: 44894, Stop: 45259, Start Num: 71
Candidate Starts for Bhageatrice_80:
(Start: 71 @44894 has 37 MA's), (89, 44957), (95, 44990), (105, 45050), (114, 45113),

Gene: BillyTP_77 Start: 43046, Stop: 43435, Start Num: 71
Candidate Starts for BillyTP_77:
(Start: 71 @43046 has 37 MA's), (100, 43169), (105, 43202), (107, 43217), (115, 43271),

Gene: BlackSpider_65 Start: 39612, Stop: 40001, Start Num: 71
Candidate Starts for BlackSpider_65:
(45, 39510), (Start: 71 @39612 has 37 MA's), (100, 39735), (105, 39768), (107, 39783), (111, 39804), (115, 39837),

Gene: BlueShadow_74 Start: 42358, Stop: 42759, Start Num: 71
Candidate Starts for BlueShadow_74:
(Start: 71 @42358 has 37 MA's), (105, 42526), (115, 42595),

Gene: Bobby_134 Start: 77532, Stop: 77885, Start Num: 66
Candidate Starts for Bobby_134:
(Start: 66 @77532 has 33 MA's), (110, 77733), (117, 77775),

Gene: Bolt007_53 Start: 38007, Stop: 38369, Start Num: 67
Candidate Starts for Bolt007_53:
(41, 37902), (43, 37905), (Start: 67 @38007 has 59 MA's), (123, 38295),

Gene: Bombitas_132 Start: 75106, Stop: 75459, Start Num: 66
Candidate Starts for Bombitas_132:
(Start: 66 @75106 has 33 MA's), (110, 75307), (117, 75349),

Gene: Brynnie_30 Start: 22557, Stop: 22213, Start Num: 67
Candidate Starts for Brynnie_30:
(Start: 67 @22557 has 59 MA's), (Start: 76 @22536 has 1 MA's), (105, 22389), (132, 22230),

Gene: Bumble_49 Start: 35709, Stop: 36101, Start Num: 56
Candidate Starts for Bumble_49:
(Start: 56 @35709 has 6 MA's), (111, 35925), (123, 36012),

Gene: CalWood4100_57 Start: 38014, Stop: 38406, Start Num: 67
Candidate Starts for CalWood4100_57:
(Start: 67 @38014 has 59 MA's), (123, 38299), (131, 38335),

Gene: Camara_31 Start: 21210, Stop: 20869, Start Num: 67
Candidate Starts for Camara_31:
(Start: 67 @21210 has 59 MA's), (Start: 75 @21192 has 1 MA's),

Gene: Cassia_45 Start: 33045, Stop: 33434, Start Num: 67
Candidate Starts for Cassia_45:
(19, 32820), (Start: 67 @33045 has 59 MA's), (87, 33099), (110, 33225), (119, 33279), (139, 33408),
(140, 33426),

Gene: Cassini_73 Start: 42039, Stop: 42428, Start Num: 71
Candidate Starts for Cassini_73:
(Start: 71 @42039 has 37 MA's), (100, 42162), (107, 42210), (115, 42264),

Gene: Causa_142 Start: 83302, Stop: 82940, Start Num: 68
Candidate Starts for Causa_142:
(Start: 60 @83317 has 10 MA's), (Start: 68 @83302 has 2 MA's), (Start: 72 @83293 has 6 MA's),
(Start: 76 @83278 has 1 MA's), (89, 83221), (91, 83212),

Gene: CharlottesWeb_47 Start: 40439, Stop: 40119, Start Num: 69
Candidate Starts for CharlottesWeb_47:
(Start: 60 @40457 has 10 MA's), (Start: 69 @40439 has 1 MA's), (95, 40352), (118, 40223),

Gene: CherryTomatoes_47 Start: 15930, Stop: 16262, Start Num: 73
Candidate Starts for CherryTomatoes_47:
(21, 15675), (61, 15903), (Start: 73 @15930 has 3 MA's), (87, 15984), (88, 15993), (95, 16032), (110,
16116), (121, 16179), (123, 16206),

Gene: Chickaboom_31 Start: 21673, Stop: 21350, Start Num: 76
Candidate Starts for Chickaboom_31:
(Start: 67 @21694 has 59 MA's), (Start: 76 @21673 has 1 MA's), (93, 21601), (120, 21430), (132,
21367),

Gene: Circuit_48 Start: 36342, Stop: 36734, Start Num: 56
Candidate Starts for Circuit_48:
(Start: 56 @36342 has 6 MA's), (105, 36522), (112, 36570), (123, 36645),

Gene: Community_48 Start: 35107, Stop: 35478, Start Num: 67
Candidate Starts for Community_48:
(Start: 67 @35107 has 59 MA's), (95, 35209), (110, 35287), (119, 35341),

Gene: Constella_138 Start: 76348, Stop: 76701, Start Num: 66
Candidate Starts for Constella_138:
(Start: 66 @76348 has 33 MA's), (110, 76549), (117, 76591),

Gene: CookieBear_75 Start: 41689, Stop: 42090, Start Num: 71
Candidate Starts for CookieBear_75:
(Start: 71 @41689 has 37 MA's), (105, 41857), (115, 41926),

Gene: CosmicBrownie_73 Start: 41072, Stop: 41473, Start Num: 71
Candidate Starts for CosmicBrownie_73:
(24, 40865), (Start: 71 @41072 has 37 MA's), (85, 41117), (110, 41273), (120, 41336),

Gene: Crescenzo_81 Start: 44484, Stop: 44873, Start Num: 71
Candidate Starts for Crescenzo_81:
(1, 42915), (2, 43050), (3, 43161), (4, 43197), (5, 43260), (8, 43938), (15, 44154), (Start: 71 @44484
has 37 MA's), (100, 44607), (105, 44640), (107, 44655), (115, 44709), (132, 44799),

Gene: Crewmate_51 Start: 33740, Stop: 34135, Start Num: 67
Candidate Starts for Crewmate_51:
(Start: 67 @33740 has 59 MA's), (87, 33794), (110, 33920),

Gene: Cyan_46 Start: 33389, Stop: 33802, Start Num: 67
Candidate Starts for Cyan_46:
(Start: 67 @33389 has 59 MA's), (87, 33443), (110, 33569), (119, 33623), (141, 33776), (142, 33794),

Gene: Cygnet_32 Start: 22555, Stop: 22169, Start Num: 56
Candidate Starts for Cygnet_32:
(Start: 56 @22555 has 6 MA's), (130, 22207),

Gene: Dallas_145 Start: 77162, Stop: 77515, Start Num: 66
Candidate Starts for Dallas_145:
(Start: 66 @77162 has 33 MA's), (110, 77363), (117, 77405),

Gene: DanHam62_31 Start: 21209, Stop: 20868, Start Num: 67
Candidate Starts for DanHam62_31:
(Start: 67 @21209 has 59 MA's), (Start: 75 @21191 has 1 MA's),

Gene: DarwinJr_81 Start: 44439, Stop: 44828, Start Num: 71
Candidate Starts for DarwinJr_81:
(1, 42870), (2, 43005), (3, 43116), (4, 43152), (5, 43215), (8, 43893), (15, 44109), (Start: 71 @44439 has 37 MA's), (100, 44562), (105, 44595), (107, 44610), (115, 44664), (132, 44754),

Gene: Ding_76 Start: 42235, Stop: 42624, Start Num: 71
Candidate Starts for Ding_76:
(15, 41905), (16, 41920), (Start: 71 @42235 has 37 MA's), (85, 42268), (100, 42358), (105, 42391), (110, 42424), (111, 42427), (114, 42454), (115, 42460), (135, 42571),

Gene: DmpstrDiver_145 Start: 77081, Stop: 77434, Start Num: 66
Candidate Starts for DmpstrDiver_145:
(Start: 66 @77081 has 33 MA's), (110, 77282), (117, 77324),

Gene: Dove_130 Start: 72680, Stop: 73033, Start Num: 66
Candidate Starts for Dove_130:
(Start: 66 @72680 has 33 MA's), (110, 72881), (117, 72923),

Gene: DrSierra_43 Start: 31383, Stop: 31799, Start Num: 67
Candidate Starts for DrSierra_43:
(Start: 67 @31383 has 59 MA's), (110, 31566), (119, 31620), (141, 31773), (142, 31791),

Gene: Duke13_140 Start: 74382, Stop: 74735, Start Num: 66
Candidate Starts for Duke13_140:
(Start: 66 @74382 has 33 MA's), (110, 74583), (117, 74625),

Gene: Ejimix_137 Start: 77230, Stop: 77583, Start Num: 66
Candidate Starts for Ejimix_137:
(Start: 66 @77230 has 33 MA's), (110, 77431), (117, 77473),

Gene: EricMillard_136 Start: 75734, Stop: 76087, Start Num: 66
Candidate Starts for EricMillard_136:

(Start: 66 @75734 has 33 MA's), (110, 75935), (117, 75977),

Gene: Evaa_48 Start: 41735, Stop: 41361, Start Num: 60

Candidate Starts for Evaa_48:

(20, 41960), (57, 41741), (Start: 60 @41735 has 10 MA's), (82, 41675), (90, 41630), (94, 41612), (95, 41603),

Gene: EvePickles_75 Start: 42959, Stop: 43348, Start Num: 71

Candidate Starts for EvePickles_75:

(Start: 71 @42959 has 37 MA's), (100, 43082), (105, 43115), (107, 43130), (115, 43184),

Gene: Faja_79 Start: 43731, Stop: 44132, Start Num: 71

Candidate Starts for Faja_79:

(Start: 71 @43731 has 37 MA's), (105, 43899), (115, 43968),

Gene: Fingolfin_31 Start: 21210, Stop: 20869, Start Num: 67

Candidate Starts for Fingolfin_31:

(Start: 67 @21210 has 59 MA's), (Start: 75 @21192 has 1 MA's),

Gene: Flutur_45 Start: 33645, Stop: 34058, Start Num: 67

Candidate Starts for Flutur_45:

(14, 33315), (Start: 67 @33645 has 59 MA's), (87, 33699), (110, 33825), (119, 33879), (141, 34032), (142, 34050),

Gene: Footloose_58 Start: 33452, Stop: 33814, Start Num: 60

Candidate Starts for Footloose_58:

(46, 33380), (47, 33398), (52, 33416), (Start: 60 @33452 has 10 MA's), (Start: 65 @33464 has 1 MA's), (87, 33524), (93, 33557), (95, 33572), (100, 33599), (104, 33623), (110, 33659),

Gene: Fresco_48 Start: 41091, Stop: 40741, Start Num: 60

Candidate Starts for Fresco_48:

(Start: 60 @41091 has 10 MA's), (82, 41046), (85, 41037), (87, 41022), (95, 40974), (110, 40893),

Gene: Globfish_76 Start: 41426, Stop: 41815, Start Num: 71

Candidate Starts for Globfish_76:

(Start: 71 @41426 has 37 MA's), (100, 41549), (105, 41582), (107, 41597), (115, 41651),

Gene: Glotell_32 Start: 21366, Stop: 21025, Start Num: 67

Candidate Starts for Glotell_32:

(Start: 67 @21366 has 59 MA's), (Start: 75 @21348 has 1 MA's),

Gene: GoldDust_45 Start: 35305, Stop: 35673, Start Num: 67

Candidate Starts for GoldDust_45:

(Start: 67 @35305 has 59 MA's), (105, 35458), (110, 35491), (112, 35506),

Gene: Gooberta_45 Start: 35304, Stop: 35672, Start Num: 67

Candidate Starts for Gooberta_45:

(Start: 67 @35304 has 59 MA's), (105, 35457), (110, 35490), (112, 35505),

Gene: Gorpy_74 Start: 42930, Stop: 43331, Start Num: 71

Candidate Starts for Gorpy_74:

(21, 42684), (Start: 71 @42930 has 37 MA's), (105, 43098), (115, 43167),

Gene: GumGum_81 Start: 42873, Stop: 43274, Start Num: 71
Candidate Starts for GumGum_81:
(Start: 71 @42873 has 37 MA's), (105, 43041), (115, 43110),

Gene: Halley_146 Start: 77546, Stop: 77899, Start Num: 66
Candidate Starts for Halley_146:
(Start: 66 @77546 has 33 MA's), (110, 77747), (117, 77789),

Gene: HamCheese_31 Start: 21194, Stop: 20853, Start Num: 67
Candidate Starts for HamCheese_31:
(Start: 67 @21194 has 59 MA's), (Start: 75 @21176 has 1 MA's),

Gene: Hestia_70 Start: 39954, Stop: 40355, Start Num: 71
Candidate Starts for Hestia_70:
(Start: 71 @39954 has 37 MA's), (105, 40122), (115, 40191),

Gene: Hidrated_130 Start: 75865, Stop: 76218, Start Num: 66
Candidate Starts for Hidrated_130:
(Start: 66 @75865 has 33 MA's), (110, 76066), (117, 76108),

Gene: Hillester_80 Start: 42975, Stop: 43364, Start Num: 71
Candidate Starts for Hillester_80:
(1, 41406), (2, 41541), (3, 41652), (4, 41688), (5, 41751), (8, 42429), (15, 42645), (Start: 71 @42975 has 37 MA's), (100, 43098), (105, 43131), (107, 43146), (115, 43200), (132, 43290),

Gene: Hirko_43 Start: 34532, Stop: 34897, Start Num: 67
Candidate Starts for Hirko_43:
(Start: 67 @34532 has 59 MA's), (105, 34685), (110, 34718), (112, 34733), (125, 34814),

Gene: HokkenD_137 Start: 76705, Stop: 77058, Start Num: 66
Candidate Starts for HokkenD_137:
(42, 76603), (Start: 66 @76705 has 33 MA's), (110, 76906), (117, 76948),

Gene: Hortus1_71 Start: 44930, Stop: 44580, Start Num: 72
Candidate Starts for Hortus1_71:
(35, 45071), (50, 44987), (Start: 72 @44930 has 6 MA's), (81, 44903), (84, 44894), (85, 44891), (96, 44828), (100, 44804), (127, 44627), (130, 44612), (134, 44591),

Gene: Hughesyang_143 Start: 77316, Stop: 77669, Start Num: 66
Candidate Starts for Hughesyang_143:
(Start: 66 @77316 has 33 MA's), (110, 77517), (117, 77559),

Gene: IUFootball_46 Start: 34755, Stop: 35162, Start Num: 67
Candidate Starts for IUFootball_46:
(59, 34737), (Start: 67 @34755 has 59 MA's), (86, 34800), (93, 34845), (95, 34860),

Gene: Indlovu_79 Start: 64345, Stop: 63932, Start Num: 70
Candidate Starts for Indlovu_79:
(17, 64654), (22, 64579), (24, 64558), (29, 64537), (34, 64495), (49, 64417), (54, 64399), (55, 64390), (Start: 70 @64345 has 1 MA's), (95, 64231), (98, 64222), (126, 64042),

Gene: Isolde_74 Start: 41800, Stop: 42201, Start Num: 71
Candidate Starts for Isolde_74:

(43, 41689), (Start: 71 @41800 has 37 MA's), (105, 41968), (115, 42037),

Gene: Iter_45 Start: 33105, Stop: 33509, Start Num: 67

Candidate Starts for Iter_45:

(Start: 67 @33105 has 59 MA's), (93, 33192), (110, 33285), (119, 33339), (141, 33483), (142, 33501),

Gene: IttyBittyPiggy_46 Start: 32844, Stop: 33215, Start Num: 67

Candidate Starts for IttyBittyPiggy_46:

(Start: 67 @32844 has 59 MA's), (87, 32898), (110, 33024), (119, 33078),

Gene: JakeTheSnake_79 Start: 44784, Stop: 45149, Start Num: 71

Candidate Starts for JakeTheSnake_79:

(Start: 71 @44784 has 37 MA's), (85, 44817), (95, 44880), (105, 44940), (114, 45003),

Gene: Janeemi_48 Start: 35112, Stop: 35516, Start Num: 67

Candidate Starts for Janeemi_48:

(Start: 67 @35112 has 59 MA's), (110, 35292), (119, 35346), (141, 35490), (142, 35508),

Gene: JellyBread_73 Start: 41945, Stop: 42346, Start Num: 71

Candidate Starts for JellyBread_73:

(Start: 71 @41945 has 37 MA's), (105, 42113), (115, 42182),

Gene: Joemato_46 Start: 33415, Stop: 33828, Start Num: 67

Candidate Starts for Joemato_46:

(14, 33085), (Start: 67 @33415 has 59 MA's), (87, 33469), (110, 33595), (119, 33649), (141, 33802), (142, 33820),

Gene: JohnDoe_46 Start: 33411, Stop: 33824, Start Num: 67

Candidate Starts for JohnDoe_46:

(14, 33081), (Start: 67 @33411 has 59 MA's), (87, 33465), (110, 33591), (119, 33645), (141, 33798), (142, 33816),

Gene: JuicyJay_140 Start: 78831, Stop: 79184, Start Num: 66

Candidate Starts for JuicyJay_140:

(Start: 66 @78831 has 33 MA's), (110, 79032), (117, 79074),

Gene: JuneStar_48 Start: 35661, Stop: 36011, Start Num: 67

Candidate Starts for JuneStar_48:

(Start: 67 @35661 has 59 MA's), (87, 35715), (110, 35841),

Gene: Juno112_30 Start: 21210, Stop: 20869, Start Num: 67

Candidate Starts for Juno112_30:

(Start: 67 @21210 has 59 MA's), (Start: 75 @21192 has 1 MA's),

Gene: KHumphrey_31 Start: 21190, Stop: 20867, Start Num: 75

Candidate Starts for KHumphrey_31:

(Start: 67 @21208 has 59 MA's), (Start: 75 @21190 has 1 MA's),

Gene: Kabloowy_76 Start: 42829, Stop: 43230, Start Num: 71

Candidate Starts for Kabloowy_76:

(Start: 71 @42829 has 37 MA's), (105, 42997), (115, 43066),

Gene: Kalah2_135 Start: 76437, Stop: 76790, Start Num: 66

Candidate Starts for Kalah2_135:
(Start: 66 @76437 has 33 MA's), (110, 76638), (117, 76680),

Gene: KashFlow_143 Start: 75737, Stop: 76090, Start Num: 66
Candidate Starts for KashFlow_143:
(42, 75635), (Start: 66 @75737 has 33 MA's), (110, 75938), (117, 75980),

Gene: Kaylissa_47 Start: 33807, Stop: 34220, Start Num: 67
Candidate Starts for Kaylissa_47:
(Start: 67 @33807 has 59 MA's), (87, 33861), (110, 33987), (119, 34041), (141, 34194), (142, 34212),

Gene: Klein_142 Start: 75039, Stop: 75392, Start Num: 66
Candidate Starts for Klein_142:
(Start: 66 @75039 has 33 MA's), (110, 75240), (117, 75282),

Gene: Klevey_55 Start: 37550, Stop: 37951, Start Num: 67
Candidate Starts for Klevey_55:
(Start: 67 @37550 has 59 MA's),

Gene: Laphuphu24k_30 Start: 21194, Stop: 20853, Start Num: 67
Candidate Starts for Laphuphu24k_30:
(Start: 67 @21194 has 59 MA's), (Start: 75 @21176 has 1 MA's),

Gene: Lasker_78 Start: 43324, Stop: 43713, Start Num: 71
Candidate Starts for Lasker_78:
(1, 41755), (2, 41890), (3, 42001), (4, 42037), (5, 42100), (8, 42778), (15, 42994), (Start: 71 @43324 has 37 MA's), (100, 43447), (105, 43480), (107, 43495), (115, 43549), (132, 43639),

Gene: Lawnathon_78 Start: 42050, Stop: 42439, Start Num: 71
Candidate Starts for Lawnathon_78:
(Start: 71 @42050 has 37 MA's), (100, 42173), (105, 42206), (107, 42221), (115, 42275),

Gene: LeBruni_79 Start: 41868, Stop: 42263, Start Num: 71
Candidate Starts for LeBruni_79:
(Start: 71 @41868 has 37 MA's), (84, 41913), (100, 42006), (105, 42039), (119, 42126), (120, 42135), (136, 42237),

Gene: Lego_45 Start: 33126, Stop: 33539, Start Num: 67
Candidate Starts for Lego_45:
(Start: 67 @33126 has 59 MA's), (87, 33180), (110, 33306), (119, 33360), (141, 33513), (142, 33531),

Gene: Leona_30 Start: 21281, Stop: 20940, Start Num: 67
Candidate Starts for Leona_30:
(Start: 67 @21281 has 59 MA's), (97, 21173), (100, 21152),

Gene: Liebe_46 Start: 34755, Stop: 35162, Start Num: 67
Candidate Starts for Liebe_46:
(59, 34737), (Start: 67 @34755 has 59 MA's), (86, 34800), (93, 34845), (95, 34860),

Gene: Ligma_48 Start: 41091, Stop: 40741, Start Num: 60
Candidate Starts for Ligma_48:
(Start: 60 @41091 has 10 MA's), (82, 41046), (85, 41037), (87, 41022), (95, 40974), (110, 40893),

Gene: Lilmac1015_57 Start: 38014, Stop: 38406, Start Num: 67

Candidate Starts for Lilmac1015_57:

(Start: 67 @38014 has 59 MA's), (123, 38299), (131, 38335),

Gene: LittleMunchkin_50 Start: 44298, Stop: 43924, Start Num: 60

Candidate Starts for LittleMunchkin_50:

(20, 44523), (Start: 60 @44298 has 10 MA's), (85, 44229), (94, 44175), (99, 44151), (128, 43965),

Gene: LittleTokyo_33 Start: 21980, Stop: 21597, Start Num: 67

Candidate Starts for LittleTokyo_33:

(Start: 67 @21980 has 59 MA's), (113, 21776),

Gene: Lizalica_44 Start: 32567, Stop: 32941, Start Num: 67

Candidate Starts for Lizalica_44:

(Start: 67 @32567 has 59 MA's), (95, 32672), (110, 32750), (119, 32804),

Gene: Lucky2013_136 Start: 72791, Stop: 73144, Start Num: 66

Candidate Starts for Lucky2013_136:

(42, 72689), (Start: 66 @72791 has 33 MA's), (110, 72992), (117, 73034),

Gene: MUWow_78 Start: 43655, Stop: 44044, Start Num: 71

Candidate Starts for MUWow_78:

(21, 43409), (Start: 71 @43655 has 37 MA's), (100, 43778), (105, 43811), (107, 43826), (115, 43880),

Gene: MaGuCo_43 Start: 33237, Stop: 33617, Start Num: 67

Candidate Starts for MaGuCo_43:

(48, 33171), (53, 33189), (Start: 67 @33237 has 59 MA's), (74, 33249), (86, 33282), (93, 33327), (95, 33342), (106, 33396),

Gene: Mapleville_72 Start: 41369, Stop: 41770, Start Num: 71

Candidate Starts for Mapleville_72:

(Start: 71 @41369 has 37 MA's), (105, 41537), (115, 41606),

Gene: Mariokart_48 Start: 41216, Stop: 40896, Start Num: 69

Candidate Starts for Mariokart_48:

(Start: 60 @41234 has 10 MA's), (Start: 69 @41216 has 1 MA's), (94, 41138), (95, 41129), (115, 41012), (118, 41000),

Gene: Marleymoo_127 Start: 73278, Stop: 73631, Start Num: 66

Candidate Starts for Marleymoo_127:

(Start: 66 @73278 has 33 MA's), (110, 73479), (117, 73521),

Gene: Maruru_65 Start: 44640, Stop: 45053, Start Num: 63

Candidate Starts for Maruru_65:

(33, 44490), (Start: 63 @44640 has 2 MA's), (89, 44730), (93, 44748), (112, 44871), (116, 44895),

Gene: MaterMagnus_76 Start: 42682, Stop: 43083, Start Num: 71

Candidate Starts for MaterMagnus_76:

(21, 42436), (Start: 71 @42682 has 37 MA's), (105, 42850), (115, 42919),

Gene: Maureen_46 Start: 34755, Stop: 35162, Start Num: 67

Candidate Starts for Maureen_46:

(59, 34737), (Start: 67 @34755 has 59 MA's), (86, 34800), (93, 34845), (95, 34860),

Gene: MiaZeal_143 Start: 73930, Stop: 74283, Start Num: 66

Candidate Starts for MiaZeal_143:

(42, 73828), (Start: 66 @73930 has 33 MA's), (110, 74131), (117, 74173),

Gene: MidnightRain_81 Start: 43270, Stop: 43659, Start Num: 71

Candidate Starts for MidnightRain_81:

(Start: 71 @43270 has 37 MA's), (100, 43393), (105, 43426), (107, 43441), (115, 43495),

Gene: Minerva_144 Start: 76488, Stop: 76841, Start Num: 66

Candidate Starts for Minerva_144:

(Start: 66 @76488 has 33 MA's), (110, 76689), (117, 76731),

Gene: Mudpuppy_42 Start: 33064, Stop: 33480, Start Num: 67

Candidate Starts for Mudpuppy_42:

(Start: 67 @33064 has 59 MA's), (87, 33118), (110, 33244), (119, 33298), (141, 33454), (142, 33472),

Gene: Mufasa8_70 Start: 44952, Stop: 45344, Start Num: 64

Candidate Starts for Mufasa8_70:

(37, 44829), (50, 44901), (Start: 64 @44952 has 2 MA's), (92, 45045),

Gene: MurphyJoseph_72 Start: 40710, Stop: 41099, Start Num: 71

Candidate Starts for MurphyJoseph_72:

(Start: 71 @40710 has 37 MA's), (100, 40833), (105, 40866), (107, 40881), (115, 40935), (132, 41025),

Gene: Music_44 Start: 34907, Stop: 35269, Start Num: 67

Candidate Starts for Music_44:

(Start: 67 @34907 has 59 MA's), (87, 34958), (110, 35090),

Gene: Nandito_53 Start: 37649, Stop: 38023, Start Num: 67

Candidate Starts for Nandito_53:

(41, 37544), (43, 37547), (Start: 67 @37649 has 59 MA's), (123, 37946),

Gene: NewKitty_78 Start: 43640, Stop: 44041, Start Num: 71

Candidate Starts for NewKitty_78:

(Start: 71 @43640 has 37 MA's), (105, 43808), (109, 43835), (115, 43877),

Gene: NihilNomen_146 Start: 76776, Stop: 77129, Start Num: 66

Candidate Starts for NihilNomen_146:

(Start: 66 @76776 has 33 MA's), (110, 76977), (117, 77019),

Gene: Nitro_44 Start: 33699, Stop: 34070, Start Num: 67

Candidate Starts for Nitro_44:

(Start: 67 @33699 has 59 MA's), (93, 33786), (110, 33879), (119, 33933), (135, 34026),

Gene: ObiToo_51 Start: 34185, Stop: 34577, Start Num: 67

Candidate Starts for ObiToo_51:

(Start: 67 @34185 has 59 MA's), (87, 34239), (110, 34365), (138, 34551), (140, 34569),

Gene: Odette_148 Start: 78919, Stop: 79272, Start Num: 66

Candidate Starts for Odette_148:

(Start: 66 @78919 has 33 MA's), (110, 79120), (117, 79162),

Gene: OlinDD_71 Start: 44929, Stop: 44579, Start Num: 72
Candidate Starts for OlinDD_71:
(35, 45070), (50, 44986), (Start: 72 @44929 has 6 MA's), (81, 44902), (84, 44893), (85, 44890), (96, 44827), (100, 44803), (127, 44626), (130, 44611), (134, 44590),

Gene: Oppalora_30 Start: 21208, Stop: 20867, Start Num: 67
Candidate Starts for Oppalora_30:
(Start: 67 @21208 has 59 MA's), (Start: 75 @21190 has 1 MA's),

Gene: Optimus_135 Start: 74056, Stop: 74409, Start Num: 66
Candidate Starts for Optimus_135:
(Start: 66 @74056 has 33 MA's), (110, 74257), (117, 74299),

Gene: Persistence_70 Start: 40343, Stop: 40708, Start Num: 71
Candidate Starts for Persistence_70:
(Start: 71 @40343 has 37 MA's), (85, 40376), (87, 40391), (95, 40439), (105, 40499), (114, 40562),

Gene: Phives_50 Start: 35604, Stop: 36011, Start Num: 65
Candidate Starts for Phives_50:
(Start: 65 @35604 has 1 MA's), (110, 35787), (119, 35841), (135, 35934), (141, 35985), (142, 36003),

Gene: PhluffyCoco_31 Start: 21194, Stop: 20853, Start Num: 67
Candidate Starts for PhluffyCoco_31:
(Start: 67 @21194 has 59 MA's), (Start: 75 @21176 has 1 MA's),

Gene: Phoebus_144 Start: 78670, Stop: 79023, Start Num: 66
Candidate Starts for Phoebus_144:
(Start: 66 @78670 has 33 MA's), (110, 78871), (117, 78913),

Gene: Phrank15_80 Start: 42781, Stop: 43146, Start Num: 71
Candidate Starts for Phrank15_80:
(45, 42679), (Start: 71 @42781 has 37 MA's), (85, 42814), (92, 42856), (95, 42877), (105, 42937), (114, 43000),

Gene: Pioneer3_71 Start: 44751, Stop: 44401, Start Num: 72
Candidate Starts for Pioneer3_71:
(35, 44892), (50, 44808), (Start: 72 @44751 has 6 MA's), (81, 44724), (84, 44715), (85, 44712), (96, 44649), (100, 44625), (127, 44448), (130, 44433), (134, 44412),

Gene: Pixelle_47 Start: 35172, Stop: 35567, Start Num: 67
Candidate Starts for Pixelle_47:
(Start: 67 @35172 has 59 MA's), (87, 35226), (110, 35352),

Gene: Platte_71 Start: 44704, Stop: 44354, Start Num: 72
Candidate Starts for Platte_71:
(50, 44761), (Start: 72 @44704 has 6 MA's), (81, 44677), (84, 44668), (85, 44665), (96, 44602), (100, 44578), (127, 44401), (130, 44386), (134, 44365),

Gene: Porcelain_140 Start: 73737, Stop: 74090, Start Num: 66
Candidate Starts for Porcelain_140:
(42, 73635), (Start: 66 @73737 has 33 MA's), (110, 73938), (117, 73980),

Gene: Pound_136 Start: 76489, Stop: 76842, Start Num: 66

Candidate Starts for Pound_136:

(40, 76375), (42, 76387), (Start: 66 @76489 has 33 MA's), (110, 76690), (117, 76732),

Gene: Powerpuff_48 Start: 34514, Stop: 34927, Start Num: 67

Candidate Starts for Powerpuff_48:

(Start: 67 @34514 has 59 MA's), (87, 34568), (110, 34694), (119, 34748), (141, 34901), (142, 34919),

Gene: Prairie_53 Start: 36909, Stop: 37310, Start Num: 67

Candidate Starts for Prairie_53:

(41, 36807), (43, 36810), (Start: 67 @36909 has 59 MA's), (122, 37170),

Gene: Pumpkins_45 Start: 33566, Stop: 33961, Start Num: 67

Candidate Starts for Pumpkins_45:

(Start: 67 @33566 has 59 MA's), (87, 33620), (110, 33749),

Gene: Pupper_45 Start: 15769, Stop: 16101, Start Num: 73

Candidate Starts for Pupper_45:

(21, 15514), (61, 15742), (Start: 73 @15769 has 3 MA's), (87, 15823), (88, 15832), (95, 15871), (110, 15955), (123, 16045),

Gene: RadFad_81 Start: 42975, Stop: 43364, Start Num: 71

Candidate Starts for RadFad_81:

(1, 41406), (2, 41541), (3, 41652), (4, 41688), (5, 41751), (8, 42429), (15, 42645), (Start: 71 @42975 has 37 MA's), (100, 43098), (105, 43131), (107, 43146), (115, 43200), (132, 43290),

Gene: Raphaella_77 Start: 41746, Stop: 42147, Start Num: 71

Candidate Starts for Raphaella_77:

(Start: 71 @41746 has 37 MA's), (105, 41914), (115, 41983),

Gene: Raqqa_74 Start: 42460, Stop: 42840, Start Num: 76

Candidate Starts for Raqqa_74:

(Start: 71 @42436 has 37 MA's), (Start: 76 @42460 has 1 MA's), (84, 42481), (100, 42574), (105, 42607), (120, 42703),

Gene: Rattail_31 Start: 21290, Stop: 20949, Start Num: 67

Candidate Starts for Rattail_31:

(Start: 67 @21290 has 59 MA's), (Start: 75 @21272 has 1 MA's),

Gene: RedFox_31 Start: 21207, Stop: 20866, Start Num: 67

Candidate Starts for RedFox_31:

(Start: 67 @21207 has 59 MA's), (Start: 75 @21189 has 1 MA's),

Gene: Redno2_139 Start: 74778, Stop: 75131, Start Num: 66

Candidate Starts for Redno2_139:

(42, 74676), (Start: 66 @74778 has 33 MA's), (110, 74979), (117, 75021),

Gene: Renna12_30 Start: 21228, Stop: 20887, Start Num: 67

Candidate Starts for Renna12_30:

(Start: 67 @21228 has 59 MA's), (77, 21207),

Gene: Richie_79 Start: 43614, Stop: 44015, Start Num: 71

Candidate Starts for Richie_79:

(21, 43368), (Start: 71 @43614 has 37 MA's), (105, 43782), (115, 43851),

Gene: Ruchi_30 Start: 22625, Stop: 22281, Start Num: 67

Candidate Starts for Ruchi_30:

(Start: 67 @22625 has 59 MA's), (Start: 76 @22604 has 1 MA's), (85, 22580), (93, 22532), (132, 22298),

Gene: SCentae_45 Start: 15768, Stop: 16100, Start Num: 73

Candidate Starts for SCentae_45:

(21, 15513), (61, 15741), (Start: 73 @15768 has 3 MA's), (87, 15822), (88, 15831), (95, 15870), (110, 15954), (123, 16044),

Gene: Sakai_73 Start: 41641, Stop: 42042, Start Num: 71

Candidate Starts for Sakai_73:

(21, 41395), (Start: 71 @41641 has 37 MA's), (105, 41809), (115, 41878),

Gene: Sashimi_74 Start: 42326, Stop: 42715, Start Num: 71

Candidate Starts for Sashimi_74:

(Start: 71 @42326 has 37 MA's), (100, 42449), (115, 42551), (132, 42641),

Gene: Schaffner_46 Start: 33571, Stop: 33933, Start Num: 67

Candidate Starts for Schaffner_46:

(Start: 67 @33571 has 59 MA's), (87, 33625), (110, 33751), (119, 33805),

Gene: Schatzie_140 Start: 77338, Stop: 77691, Start Num: 66

Candidate Starts for Schatzie_140:

(Start: 66 @77338 has 33 MA's), (110, 77539), (117, 77581),

Gene: Schism_53 Start: 34682, Stop: 35089, Start Num: 51

Candidate Starts for Schism_53:

(Start: 51 @34682 has 1 MA's), (58, 34715), (62, 34727), (Start: 64 @34730 has 2 MA's), (79, 34763), (85, 34781), (93, 34829), (119, 34988),

Gene: Seahorse_84 Start: 47304, Stop: 47699, Start Num: 71

Candidate Starts for Seahorse_84:

(Start: 71 @47304 has 37 MA's), (84, 47349), (105, 47475), (120, 47571), (136, 47673),

Gene: Shatter_48 Start: 41091, Stop: 40741, Start Num: 60

Candidate Starts for Shatter_48:

(Start: 60 @41091 has 10 MA's), (82, 41046), (85, 41037), (87, 41022), (95, 40974), (110, 40893),

Gene: Shukran_73 Start: 41223, Stop: 41588, Start Num: 71

Candidate Starts for Shukran_73:

(25, 41013), (44, 41118), (Start: 64 @41211 has 2 MA's), (Start: 71 @41223 has 37 MA's), (85, 41256), (95, 41319), (105, 41379),

Gene: Simpson_48 Start: 33419, Stop: 33832, Start Num: 67

Candidate Starts for Simpson_48:

(14, 33089), (Start: 67 @33419 has 59 MA's), (87, 33473), (110, 33599), (119, 33653), (141, 33806), (142, 33824),

Gene: Sisko_47 Start: 41439, Stop: 41065, Start Num: 60

Candidate Starts for Sisko_47:

(Start: 60 @41439 has 10 MA's), (82, 41379), (94, 41316), (95, 41307), (115, 41187),

Gene: SonDevVon_83 Start: 42690, Stop: 43091, Start Num: 71
Candidate Starts for SonDevVon_83:
(21, 42444), (Start: 71 @42690 has 37 MA's), (105, 42858), (115, 42927),

Gene: Sonali_65 Start: 45108, Stop: 45521, Start Num: 63
Candidate Starts for Sonali_65:
(33, 44958), (Start: 63 @45108 has 2 MA's), (89, 45198), (93, 45216), (112, 45339), (116, 45363),

Gene: SpicyFrank_78 Start: 42043, Stop: 42432, Start Num: 71
Candidate Starts for SpicyFrank_78:
(Start: 71 @42043 has 37 MA's), (100, 42166), (105, 42199), (107, 42214), (115, 42268),

Gene: Sporco_78 Start: 43426, Stop: 43827, Start Num: 71
Candidate Starts for Sporco_78:
(Start: 71 @43426 has 37 MA's), (105, 43594), (115, 43663),

Gene: StAugustine_140 Start: 84499, Stop: 84137, Start Num: 68
Candidate Starts for StAugustine_140:
(Start: 60 @84514 has 10 MA's), (Start: 68 @84499 has 2 MA's), (Start: 72 @84490 has 6 MA's),
(Start: 76 @84475 has 1 MA's), (89, 84418), (91, 84409), (124, 84211),

Gene: Sunshine23_66 Start: 44762, Stop: 45172, Start Num: 63
Candidate Starts for Sunshine23_66:
(33, 44612), (Start: 63 @44762 has 2 MA's), (80, 44810), (89, 44852), (93, 44870), (105, 44945), (112, 44993), (116, 45017),

Gene: Tandem_71 Start: 44831, Stop: 44481, Start Num: 72
Candidate Starts for Tandem_71:
(35, 44972), (50, 44888), (Start: 72 @44831 has 6 MA's), (81, 44804), (84, 44795), (85, 44792), (96, 44729), (100, 44705), (127, 44528), (130, 44513), (134, 44492),

Gene: Tbone_46 Start: 33975, Stop: 34388, Start Num: 67
Candidate Starts for Tbone_46:
(30, 33801), (43, 33873), (Start: 67 @33975 has 59 MA's), (87, 34029), (110, 34155), (119, 34209),
(141, 34362), (142, 34380),

Gene: ThayneTheZag_81 Start: 42670, Stop: 43059, Start Num: 71
Candidate Starts for ThayneTheZag_81:
(Start: 71 @42670 has 37 MA's), (100, 42793), (105, 42826), (107, 42841), (115, 42895),

Gene: Thibault_127 Start: 73673, Stop: 74026, Start Num: 66
Candidate Starts for Thibault_127:
(36, 73550), (39, 73562), (Start: 66 @73673 has 33 MA's), (110, 73874), (117, 73916),

Gene: ThreeRngTarjay_139 Start: 77261, Stop: 77614, Start Num: 66
Candidate Starts for ThreeRngTarjay_139:
(Start: 66 @77261 has 33 MA's), (110, 77462), (117, 77504),

Gene: ThursdayNight_48 Start: 33913, Stop: 34314, Start Num: 67
Candidate Starts for ThursdayNight_48:
(Start: 67 @33913 has 59 MA's), (95, 34021), (110, 34105), (129, 34225), (137, 34288),

Gene: Tian_45 Start: 34828, Stop: 35223, Start Num: 67
Candidate Starts for Tian_45:
(6, 34264), (9, 34336), (10, 34345), (12, 34423), (28, 34654), (38, 34726), (Start: 67 @34828 has 59 MA's), (87, 34882), (110, 35008),

Gene: Tiff81_72 Start: 40921, Stop: 41316, Start Num: 71
Candidate Starts for Tiff81_72:
(Start: 71 @40921 has 37 MA's), (84, 40966), (105, 41092), (120, 41188), (136, 41290),

Gene: Tuck_49 Start: 35489, Stop: 35893, Start Num: 67
Candidate Starts for Tuck_49:
(Start: 67 @35489 has 59 MA's), (110, 35669), (119, 35723), (135, 35816), (141, 35867), (142, 35885),

Gene: Tutumahutu_47 Start: 33397, Stop: 33810, Start Num: 67
Candidate Starts for Tutumahutu_47:
(Start: 67 @33397 has 59 MA's), (87, 33451), (110, 33577), (119, 33631), (141, 33784), (142, 33802),

Gene: Vibaki_44 Start: 34927, Stop: 35295, Start Num: 67
Candidate Starts for Vibaki_44:
(Start: 67 @34927 has 59 MA's), (105, 35080), (110, 35113), (112, 35128),

Gene: Vitus_45 Start: 33911, Stop: 34246, Start Num: 67
Candidate Starts for Vitus_45:
(Start: 67 @33911 has 59 MA's), (105, 34061), (110, 34094),

Gene: Vulpecula_30 Start: 22301, Stop: 21957, Start Num: 67
Candidate Starts for Vulpecula_30:
(Start: 67 @22301 has 59 MA's), (Start: 76 @22280 has 1 MA's), (85, 22256), (93, 22208),

Gene: Wanda_144 Start: 74968, Stop: 75321, Start Num: 66
Candidate Starts for Wanda_144:
(Start: 66 @74968 has 33 MA's), (110, 75169), (117, 75211),

Gene: Warda_46 Start: 33470, Stop: 33874, Start Num: 67
Candidate Starts for Warda_46:
(Start: 67 @33470 has 59 MA's), (87, 33524), (110, 33650), (119, 33704), (141, 33848),

Gene: Wildwest_45 Start: 33392, Stop: 33811, Start Num: 67
Candidate Starts for Wildwest_45:
(7, 32825), (11, 32918), (30, 33218), (43, 33290), (Start: 67 @33392 has 59 MA's), (110, 33578), (141, 33785), (142, 33803),

Gene: WileyE_31 Start: 21694, Stop: 21350, Start Num: 67
Candidate Starts for WileyE_31:
(Start: 67 @21694 has 59 MA's), (Start: 76 @21673 has 1 MA's), (93, 21601), (120, 21430), (132, 21367),

Gene: Windest_80 Start: 41108, Stop: 41497, Start Num: 71
Candidate Starts for Windest_80:
(Start: 71 @41108 has 37 MA's), (100, 41231), (105, 41264), (107, 41279), (115, 41333),

Gene: Wolfstar_76 Start: 46237, Stop: 45881, Start Num: 72
Candidate Starts for Wolfstar_76:

(35, 46384), (50, 46300), (Start: 72 @46237 has 6 MA's), (83, 46201), (84, 46198), (88, 46171), (101, 46102), (103, 46081), (110, 46036), (116, 45997), (118, 45988), (127, 45928), (130, 45913), (133, 45904),

Gene: Yago84_47 Start: 41514, Stop: 41140, Start Num: 60

Candidate Starts for Yago84_47:

(Start: 60 @41514 has 10 MA's), (82, 41454), (94, 41391), (95, 41382), (115, 41262),

Gene: Yang_46 Start: 33276, Stop: 33626, Start Num: 67

Candidate Starts for Yang_46:

(12, 32868), (13, 32877), (18, 33003), (23, 33066), (25, 33087), (26, 33096), (31, 33114), (32, 33123), (Start: 67 @33276 has 59 MA's), (87, 33330), (110, 33456),

Gene: Yeet_138 Start: 76734, Stop: 77087, Start Num: 66

Candidate Starts for Yeet_138:

(42, 76632), (Start: 66 @76734 has 33 MA's), (110, 76935), (117, 76977),

Gene: YesChef_46 Start: 33373, Stop: 33786, Start Num: 67

Candidate Starts for YesChef_46:

(Start: 67 @33373 has 59 MA's), (87, 33427), (110, 33553), (119, 33607), (141, 33760), (142, 33778),

Gene: YoungHarleezy_76 Start: 42016, Stop: 42417, Start Num: 71

Candidate Starts for YoungHarleezy_76:

(Start: 71 @42016 has 37 MA's), (105, 42184), (115, 42253),

Gene: Zelink_139 Start: 77780, Stop: 78133, Start Num: 66

Candidate Starts for Zelink_139:

(Start: 66 @77780 has 33 MA's), (110, 77981), (117, 78023),

Gene: Zhuangyuan_35 Start: 22960, Stop: 22577, Start Num: 56

Candidate Starts for Zhuangyuan_35:

(27, 23122), (Start: 56 @22960 has 6 MA's), (108, 22747), (130, 22615),

Gene: Zucker_73 Start: 43088, Stop: 43483, Start Num: 71

Candidate Starts for Zucker_73:

(24, 42881), (Start: 71 @43088 has 37 MA's), (84, 43133), (100, 43226), (105, 43259), (136, 43457),