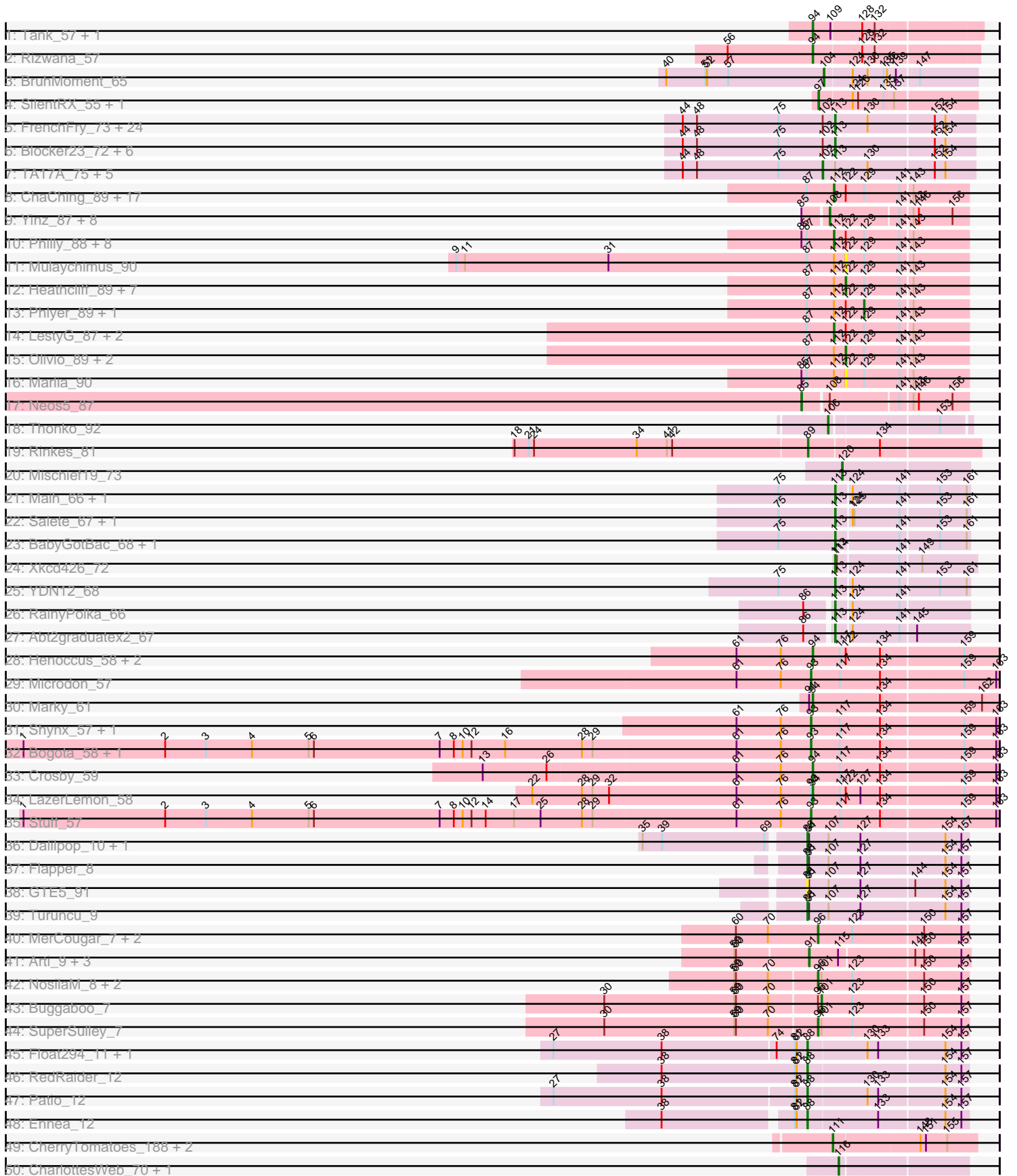
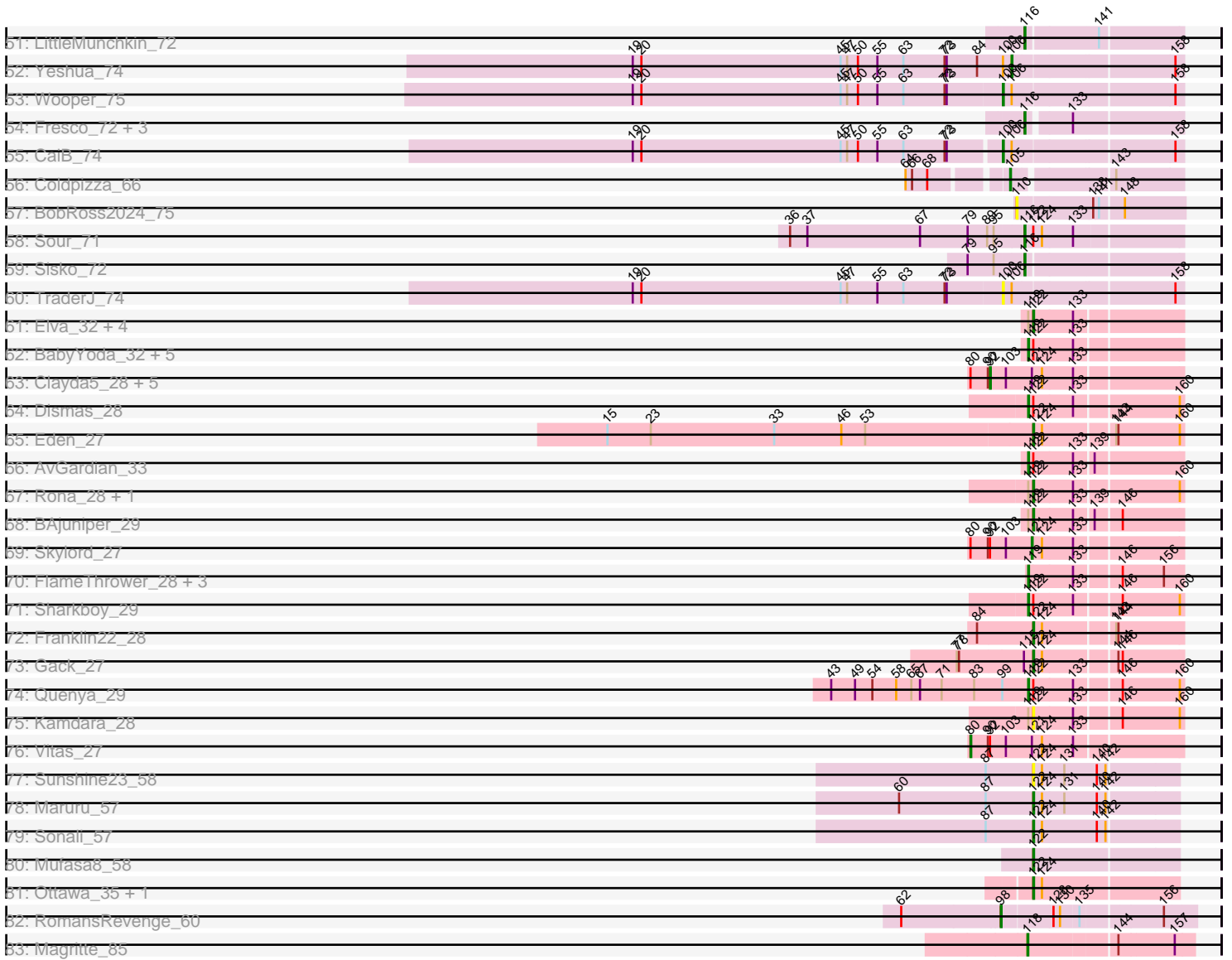


Pham 294434



Pham 294434



Note: Tracks are now grouped by subcluster and scaled. Switching in subcluster is indicated by changes in track color. Track scale is now set by default to display the region 30 bp upstream of start 1 to 30 bp downstream of the last possible start. If this default region is judged to be packed too tightly with annotated starts, the track will be further scaled to only show that region of the ORF with annotated starts. This action will be indicated by adding "Zoomed" to the title. For starts, yellow indicates the location of called starts comprised solely of Glimmer/GeneMark auto-annotations, green indicates the location of called starts with at least 1 manual gene annotation.

Pham 294434 Report

This analysis was run 04/18/26 on database version 643.

Pham number 294434 has 206 members, 16 are drafts.

Phages represented in each track:

- Track 1 : Tank_57, Wilde_59
- Track 2 : Rizwana_57
- Track 3 : BruhMoment_65
- Track 4 : SilentRX_55, AWGoat_53
- Track 5 : FrenchFry_73, Ares_72, Tinciduntolum_73, Lars_73, Allegro_72, Sabella_72, Kheth_72, Kolhan_73, Faze9_71, Lephleur_72, Godines_73, Glass_74, Eaglehorse_72, Brownie5_72, Boyle_72, Calamitous_73, LizLemon_72, Rhinoforte_72, Rosebush_70, Kaleb_72, MasterPo_73, Coffee_72, Laurie_73, LilSmirk_72, Phantasmagoria_71
- Track 6 : Blocker23_72, PrinceCharming_73, Bananafish_73, Tres_72, ItsyBitsy1_70, Holeinone_72, West99_72
- Track 7 : TA17A_75, Hedgerow_72, Opia_73, Arbiter_69, Vic9_00072, Qyrzula_65
- Track 8 : ChaChing_89, Gervas_90, Ben11_89, RagingRooster_88, Corofin_89, SynergyX_89, GlenHope_90, Audrey_89, Chentzyk_91, Briakila_89, Baloo_88, Devonte_87, Deenasa_89, Chalmers_88, Yahalom_87, OrangeOswald_88, MmasiCarm_90, RomaT_89
- Track 9 : Yinz_87, HarveySr_86, Marley1013_88, Gadget_87, Glubnar_89, Morty007_86, Bernardo_87, Phayeta_92, SwainyDoc_89
- Track 10 : Philly_88, Halfpint_88, TinyTerror_90, Kronus_89, Rita1961_90, Nozo_89, Compostia_88, Casbah_89, Jackstina_83
- Track 11 : Mulaychimus_90
- Track 12 : Heathcliff_89, Akoma_89, SlippinJimmy_92, Chandler_89, Daisy_88, Phaedrus_84, Kamiyu_89, Shenandoah_88
- Track 13 : Phlyer_89, Athena_91
- Track 14 : LestyG_87, Obutu_91, Abinghost_89
- Track 15 : Olivio_89, Mortcellus_89, Tydolla_85
- Track 16 : Marlia_90
- Track 17 : Neos5_87
- Track 18 : Thonko_92
- Track 19 : Rinkes_81
- Track 20 : Mischief19_73
- Track 21 : Maih_66, Asis_68
- Track 22 : Salete_67, BayC_67
- Track 23 : BabyGotBac_68, TP1604_67
- Track 24 : Xkcd426_72
- Track 25 : YDN12_68
- Track 26 : RainyPolka_66

- Track 27 : Abt2graduatex2_67
- Track 28 : Henoccus_58, JackieB_58, Araceli_57
- Track 29 : Microdon_57
- Track 30 : Marky_61
- Track 31 : Shynx_57, Intolerant_55
- Track 32 : Bogota_58, UNTPL_59
- Track 33 : Crosby_59
- Track 34 : LazerLemon_58
- Track 35 : Stuff_57
- Track 36 : Dalilpop_10, GRU1_92
- Track 37 : Flapper_8
- Track 38 : GTE5_91
- Track 39 : Turuncu_9
- Track 40 : MerCougar_7, Outis_7, StarStruck_7
- Track 41 : Arti_9, GrootJr_11, NovumRegina_9, Wheezy_9
- Track 42 : NosilaM_8, Kabluna_8, Bonum_8
- Track 43 : Buggaboo_7
- Track 44 : SuperSulley_7
- Track 45 : Float294_11, Skysand_11
- Track 46 : RedRaider_12
- Track 47 : Patio_12
- Track 48 : Ennea_12
- Track 49 : CherryTomatoes_188, SCentae_185, Pupper_186
- Track 50 : CharlottesWeb_70, Mariokart_70
- Track 51 : LittleMunchkin_72
- Track 52 : Yeshua_74
- Track 53 : Wooper_75
- Track 54 : Fresco_72, Ligma_72, Axumite_72, Shatter_72
- Track 55 : CaiB_74
- Track 56 : Coldpizza_66
- Track 57 : BobRoss2024_75
- Track 58 : Sour_71
- Track 59 : Sisko_72
- Track 60 : TraderJ_74
- Track 61 : Elva_32, Stromboli_32, Icarian_34, Stoor_32, WalkingDead_32
- Track 62 : BabyYoda_32, Loviatar_33, SanaSana_34, Akino08_32, DirtyBubble_31, PondAmelia_41
- Track 63 : Clayda5_28, Coltrane_27, Rollins_27, Bernstein_27, Brahms_27, Armstrong_27
- Track 64 : Dismas_28
- Track 65 : Eden_27
- Track 66 : AvGardian_33
- Track 67 : Rona_28, Kieran_28
- Track 68 : BAjuniper_29
- Track 69 : Skylord_27
- Track 70 : FlameThrower_28, Katzastrophic_28, Celaena_28, Bachaco_28
- Track 71 : Sharkboy_29
- Track 72 : Franklin22_28
- Track 73 : Gack_27
- Track 74 : Quenya_29
- Track 75 : Kamdara_28
- Track 76 : Vitas_27
- Track 77 : Sunshine23_58

- Track 78 : Maruru_57
- Track 79 : Sonali_57
- Track 80 : Mufasa8_58
- Track 81 : Ottawa_35, Kharcho_35
- Track 82 : RomansRevenge_60
- Track 83 : Magritte_85

Summary of Final Annotations (See graph section above for start numbers):

The start number called the most often in the published annotations is 113, it was called in 41 of the 190 non-draft genes in the pham.

Genes that call this "Most Annotated" start:

- Abt2graduatex2_67, Allegro_72, Ares_72, Asis_68, BabyGotBac_68, Bananafish_73, BayC_67, Blocker23_72, Boyle_72, Brownie5_72, Calamitous_73, Coffee_72, Eaglehorse_72, Faze9_71, FrenchFry_73, Glass_74, Godines_73, Holeinone_72, ItsyBitsy1_70, Kaleb_72, Kheth_72, Kolhan_73, Lars_73, Laurie_73, Lephleur_72, LilSmirk_72, LizLemon_72, Maih_66, MasterPo_73, Phantasmagoria_71, PrinceCharming_73, RainyPolka_66, Rhinoforte_72, Rosebush_70, Sabella_72, Salete_67, TP1604_67, Tinciduntolum_73, Tres_72, West99_72, Xkcd426_72, YDN12_68,

Genes that have the "Most Annotated" start but do not call it:

- Arbiter_69, Hedgerow_72, Opia_73, Qyrzula_65, TA17A_75, Vic9_00072,

Genes that do not have the "Most Annotated" start:

- AWGoat_53, Abinghost_89, Akino08_32, Akoma_89, Araceli_57, Armstrong_27, Arti_9, Athena_91, Audrey_89, AvGuardian_33, Axumite_72, BAjuniper_29, BabyYoda_32, Bachaco_28, Baloo_88, Ben11_89, Bernardo_87, Bernstein_27, BobRoss2024_75, Bogota_58, Bonum_8, Brahms_27, Briakila_89, BruhMoment_65, Buggaboo_7, CaiB_74, Casbah_89, Celaena_28, ChaChing_89, Chalmers_88, Chandler_89, CharlottesWeb_70, Chentzyk_91, CherryTomatoes_188, Clayda5_28, Coldpizza_66, Coltrane_27, Compostia_88, Corofin_89, Crosby_59, Daisy_88, Dalilpop_10, Deenasa_89, Devonte_87, DirtyBubble_31, Dismas_28, Eden_27, Elva_32, Ennea_12, FlameThrower_28, Flapper_8, Float294_11, Franklin22_28, Fresco_72, GRU1_92, GTE5_91, Gack_27, Gadget_87, Gervas_90, GlenHope_90, Glubnar_89, GrootJr_11, Halfpint_88, HarveySr_86, Heathcliff_89, Henoccus_58, Icarian_34, Intolerant_55, JackieB_58, Jackstina_83, Kabluna_8, Kamdara_28, Kamiyu_89, Katzastrophic_28, Kharcho_35, Kieran_28, Kronus_89, LazerLemon_58, LestyG_87, Ligma_72, LittleMunchkin_72, Loviatar_33, Magritte_85, Mariokart_70, Marky_61, Marley1013_88, Marlia_90, Maruru_57, MerCougar_7, Microdon_57, Mischieff19_73, MmasiCarm_90, Mortcellus_89, Morty007_86, Mufasa8_58, Mulaychimus_90, Neos5_87, NosilaM_8, NovumRegina_9, Nozo_89, Obutu_91, Olivio_89, OrangeOswald_88, Ottawa_35, Outis_7, Patio_12, Phaedrus_84, Phayeta_92, Philly_88, Phlyer_89, PondAmelia_41, Pupper_186, Quenya_29, RagingRooster_88, RedRaider_12, Rinkes_81, Rita1961_90, Rizwana_57, Rollins_27, RomaT_89, RomansRevenge_60, Rona_28, SCentae_185, SanaSana_34, Sharkboy_29, Shatter_72, Shenandoah_88, Shynx_57, SilentRX_55, Sisko_72, Skylord_27, Skysand_11, SlippinJimmy_92, Sonali_57, Sour_71, StarStruck_7, Stoor_32, Stromboli_32, Stuff_57, Sunshine23_58, SuperSulley_7,

SwainyDoc_89, SynergyX_89, Tank_57, Thonko_92, TinyTerror_90, TraderJ_74, Turuncu_9, Tydolla_85, UNTPL_59, Vitas_27, WalkingDead_32, Wheezy_9, Wilde_59, Wooper_75, Yahalom_87, Yeshua_74, Yinz_87,

Summary by start number:

Start 80:

- Found in 8 of 206 (3.9%) of genes in pham
- Manual Annotations of this start: 1 of 190
- Called 12.5% of time when present
- Phage (with cluster) where this start called: Vitas_27 (EB),

Start 85:

- Found in 20 of 206 (9.7%) of genes in pham
- Manual Annotations of this start: 1 of 190
- Called 5.0% of time when present
- Phage (with cluster) where this start called: Neos5_87 (B3),

Start 88:

- Found in 10 of 206 (4.9%) of genes in pham
- Manual Annotations of this start: 8 of 190
- Called 100.0% of time when present
- Phage (with cluster) where this start called: Dalilpop_10 (CR1), Ennea_12 (CR3), Flapper_8 (CR1), Float294_11 (CR3), GRU1_92 (CR1), GTE5_91 (CR1), Patio_12 (CR3), RedRaider_12 (CR3), Skysand_11 (CR3), Turuncu_9 (CR1),

Start 89:

- Found in 2 of 206 (1.0%) of genes in pham
- Manual Annotations of this start: 1 of 190
- Called 50.0% of time when present
- Phage (with cluster) where this start called: Rinkes_81 (B9),

Start 91:

- Found in 10 of 206 (4.9%) of genes in pham
- Manual Annotations of this start: 4 of 190
- Called 40.0% of time when present
- Phage (with cluster) where this start called: Arti_9 (CR2), GrootJr_11 (CR2), NovumRegina_9 (CR2), Wheezy_9 (CR2),

Start 92:

- Found in 8 of 206 (3.9%) of genes in pham
- Manual Annotations of this start: 6 of 190
- Called 75.0% of time when present
- Phage (with cluster) where this start called: Armstrong_27 (EB), Bernstein_27 (EB), Brahms_27 (EB), Clayda5_28 (EB), Coltrane_27 (EB), Rollins_27 (EB),

Start 93:

- Found in 7 of 206 (3.4%) of genes in pham
- Manual Annotations of this start: 6 of 190
- Called 85.7% of time when present
- Phage (with cluster) where this start called: Bogota_58 (BH), Intolerant_55 (BH), Microdon_57 (BH), Shynx_57 (BH), Stuff_57 (BH), UNTPL_59 (BH),

Start 94:

- Found in 9 of 206 (4.4%) of genes in pham
- Manual Annotations of this start: 9 of 190
- Called 100.0% of time when present
- Phage (with cluster) where this start called: Araceli_57 (BH), Crosby_59 (BH), Henoccus_58 (BH), JackieB_58 (BH), LazerLemon_58 (BH), Marky_61 (BH), Rizwana_57 (AP1), Tank_57 (AP1), Wilde_59 (AP1),

Start 96:

- Found in 8 of 206 (3.9%) of genes in pham
- Manual Annotations of this start: 7 of 190
- Called 87.5% of time when present
- Phage (with cluster) where this start called: Bonum_8 (CR2), Kabluna_8 (CR2), MerCougar_7 (CR2), NosilaM_8 (CR2), Outis_7 (CR2), StarStruck_7 (CR2), SuperSulley_7 (CR2),

Start 97:

- Found in 2 of 206 (1.0%) of genes in pham
- Manual Annotations of this start: 2 of 190
- Called 100.0% of time when present
- Phage (with cluster) where this start called: AWGoat_53 (AP4), SilentRX_55 (AP4),

Start 98:

- Found in 1 of 206 (0.5%) of genes in pham
- Manual Annotations of this start: 1 of 190
- Called 100.0% of time when present
- Phage (with cluster) where this start called: RomansRevenge_60 (FT),

Start 100:

- Found in 4 of 206 (1.9%) of genes in pham
- Manual Annotations of this start: 2 of 190
- Called 75.0% of time when present
- Phage (with cluster) where this start called: CaiB_74 (DR), TraderJ_74 (DR), Wooper_75 (DR),

Start 101:

- Found in 5 of 206 (2.4%) of genes in pham
- Manual Annotations of this start: 1 of 190
- Called 20.0% of time when present
- Phage (with cluster) where this start called: Buggaboo_7 (CR2),

Start 102:

- Found in 38 of 206 (18.4%) of genes in pham
- Manual Annotations of this start: 6 of 190
- Called 15.8% of time when present
- Phage (with cluster) where this start called: Arbiter_69 (B2), Hedgerow_72 (B2), Opia_73 (B2), Qyrzula_65 (B2), TA17A_75 (B2), Vic9_00072 (B2),

Start 104:

- Found in 1 of 206 (0.5%) of genes in pham
- Manual Annotations of this start: 1 of 190
- Called 100.0% of time when present
- Phage (with cluster) where this start called: BruhMoment_65 (AP3),

Start 105:

- Found in 1 of 206 (0.5%) of genes in pham
- Manual Annotations of this start: 1 of 190
- Called 100.0% of time when present
- Phage (with cluster) where this start called: Coldpizza_66 (DR),

Start 106:

- Found in 5 of 206 (2.4%) of genes in pham
- Manual Annotations of this start: 2 of 190
- Called 40.0% of time when present
- Phage (with cluster) where this start called: Thonko_92 (B8), Yeshua_74 (DR),

Start 108:

- Found in 10 of 206 (4.9%) of genes in pham
- Manual Annotations of this start: 8 of 190
- Called 90.0% of time when present
- Phage (with cluster) where this start called: Bernardo_87 (B3), Gadget_87 (B3), Glubnar_89 (B3), HarveySr_86 (B3), Marley1013_88 (B3), Morty007_86 (B3), Phayeta_92 (B3), SwainyDoc_89 (B3), Yinz_87 (B3),

Start 110:

- Found in 1 of 206 (0.5%) of genes in pham
- No Manual Annotations of this start.
- Called 100.0% of time when present
- Phage (with cluster) where this start called: BobRoss2024_75 (DR),

Start 111:

- Found in 3 of 206 (1.5%) of genes in pham
- Manual Annotations of this start: 3 of 190
- Called 100.0% of time when present
- Phage (with cluster) where this start called: CherryTomatoes_188 (DO), Pupper_186 (DO), SCentae_185 (DO),

Start 112:

- Found in 45 of 206 (21.8%) of genes in pham
- Manual Annotations of this start: 30 of 190
- Called 66.7% of time when present
- Phage (with cluster) where this start called: Abinghost_89 (B3), Audrey_89 (B3), Baloo_88 (B3), Ben11_89 (B3), Briakila_89 (B3), Casbah_89 (B3), ChaChing_89 (B3), Chalmers_88 (B3), Chentzyk_91 (B3), Compostia_88 (B3), Corofin_89 (B3), Deenasa_89 (B3), Devonte_87 (B3), Gervas_90 (B3), GlenHope_90 (B3), Halfpint_88 (B3), Jackstina_83 (B3), Kronus_89 (B3), LestyG_87 (B3), MmasiCarm_90 (B3), Nozo_89 (B3), Obutu_91 (B3), OrangeOswald_88 (B3), Philly_88 (B3), RagingRooster_88 (B3), Rita1961_90 (B3), RomaT_89 (B3), SynergyX_89 (B3), TinyTerror_90 (B3), Yahalom_87 (B3),

Start 113:

- Found in 48 of 206 (23.3%) of genes in pham
- Manual Annotations of this start: 41 of 190
- Called 87.5% of time when present
- Phage (with cluster) where this start called: Abt2graduatex2_67 (BG), Allegro_72 (B2), Ares_72 (B2), Asis_68 (BG), BabyGotBac_68 (BG), Bananafish_73 (B2),

BayC_67 (BG), Blocker23_72 (B2), Boyle_72 (B2), Brownie5_72 (B2), Calamitous_73 (B2), Coffee_72 (B2), Eaglehorse_72 (B2), Faze9_71 (B2), FrenchFry_73 (B2), Glass_74 (B2), Godines_73 (B2), Holeinone_72 (B2), ItsyBitsy1_70 (B2), Kaleb_72 (B2), Kheth_72 (B2), Kolhan_73 (B2), Lars_73 (B2), Laurie_73 (B2), Lephleur_72 (B2), LilSmirk_72 (B2), LizLemon_72 (B2), Maih_66 (BG), MasterPo_73 (B2), Phantasmagoria_71 (B2), PrinceCharming_73 (B2), RainyPolka_66 (BG), Rhinoforte_72 (B2), Rosebush_70 (B2), Sabella_72 (B2), Salete_67 (BG), TP1604_67 (BG), Tinciduntolum_73 (B2), Tres_72 (B2), West99_72 (B2), Xkcd426_72 (BG), YDN12_68 (BG),

Start 116:

- Found in 9 of 206 (4.4%) of genes in pham
- Manual Annotations of this start: 8 of 190
- Called 100.0% of time when present
- Phage (with cluster) where this start called: Axumite_72 (DR), CharlottesWeb_70 (DR), Fresco_72 (DR), Ligma_72 (DR), LittleMunchkin_72 (DR), Mariokart_70 (DR), Shatter_72 (DR), Sisko_72 (DR), Sour_71 (DR),

Start 118:

- Found in 1 of 206 (0.5%) of genes in pham
- Manual Annotations of this start: 1 of 190
- Called 100.0% of time when present
- Phage (with cluster) where this start called: Magritte_85 (singleton),

Start 119:

- Found in 23 of 206 (11.2%) of genes in pham
- Manual Annotations of this start: 13 of 190
- Called 60.9% of time when present
- Phage (with cluster) where this start called: Akino08_32 (EB), AvGardian_33 (EB), BabyYoda_32 (EB), Bachaco_28 (EB), Celaena_28 (EB), DirtyBubble_31 (EB), Dismas_28 (EB), FlameThrower_28 (EB), Katzastrophic_28 (EB), Loviatar_33 (EB), PondAmelia_41 (EB), Quenya_29 (EB), SanaSana_34 (EB), Sharkboy_29 (EB),

Start 120:

- Found in 1 of 206 (0.5%) of genes in pham
- Manual Annotations of this start: 1 of 190
- Called 100.0% of time when present
- Phage (with cluster) where this start called: Mischief19_73 (BG),

Start 121:

- Found in 8 of 206 (3.9%) of genes in pham
- Manual Annotations of this start: 1 of 190
- Called 12.5% of time when present
- Phage (with cluster) where this start called: Skylord_27 (EB),

Start 122:

- Found in 78 of 206 (37.9%) of genes in pham
- Manual Annotations of this start: 23 of 190
- Called 39.7% of time when present
- Phage (with cluster) where this start called: Akoma_89 (B3), BAjuniper_29 (EB), Chandler_89 (B3), Daisy_88 (B3), Eden_27 (EB), Elva_32 (EB), Franklin22_28 (EB), Gack_27 (EB), Heathcliff_89 (B3), Icarian_34 (EB), Kamdara_28 (EB), Kamiyu_89 (B3), Kharcho_35 (FM), Kieran_28 (EB), Marlia_90 (B3), Maruru_57 (FG),

Mortcellus_89 (B3), Mufasa8_58 (FG), Mulaychimus_90 (B3), Olivio_89 (B3), Ottawa_35 (FM), Phaedrus_84 (B3), Rona_28 (EB), Shenandoah_88 (B3), SlippinJimmy_92 (B3), Sonali_57 (FG), Stoor_32 (EB), Stromboli_32 (EB), Sunshine23_58 (FG), Tydolla_85 (B3), WalkingDead_32 (EB),

Start 129:

- Found in 45 of 206 (21.8%) of genes in pham
- Manual Annotations of this start: 2 of 190
- Called 4.4% of time when present
- Phage (with cluster) where this start called: Athena_91 (B3), Phlyer_89 (B3),

Summary by clusters:

There are 19 clusters represented in this pham: CR2, CR3, singleton, BG, FT, DO, AP3, AP1, BH, AP4, EB, CR1, B9, B8, B2, B3, DR, FM, FG,

Info for manual annotations of cluster AP1:

- Start number 94 was manually annotated 3 times for cluster AP1.

Info for manual annotations of cluster AP3:

- Start number 104 was manually annotated 1 time for cluster AP3.

Info for manual annotations of cluster AP4:

- Start number 97 was manually annotated 2 times for cluster AP4.

Info for manual annotations of cluster B2:

- Start number 102 was manually annotated 6 times for cluster B2.
- Start number 113 was manually annotated 31 times for cluster B2.

Info for manual annotations of cluster B3:

- Start number 85 was manually annotated 1 time for cluster B3.
- Start number 108 was manually annotated 8 times for cluster B3.
- Start number 112 was manually annotated 30 times for cluster B3.
- Start number 122 was manually annotated 8 times for cluster B3.
- Start number 129 was manually annotated 2 times for cluster B3.

Info for manual annotations of cluster B8:

- Start number 106 was manually annotated 1 time for cluster B8.

Info for manual annotations of cluster B9:

- Start number 89 was manually annotated 1 time for cluster B9.

Info for manual annotations of cluster BG:

- Start number 113 was manually annotated 10 times for cluster BG.
- Start number 120 was manually annotated 1 time for cluster BG.

Info for manual annotations of cluster BH:

- Start number 93 was manually annotated 6 times for cluster BH.
- Start number 94 was manually annotated 6 times for cluster BH.

Info for manual annotations of cluster CR1:

- Start number 88 was manually annotated 3 times for cluster CR1.

Info for manual annotations of cluster CR2:

- Start number 91 was manually annotated 4 times for cluster CR2.
- Start number 96 was manually annotated 7 times for cluster CR2.
- Start number 101 was manually annotated 1 time for cluster CR2.

Info for manual annotations of cluster CR3:

- Start number 88 was manually annotated 5 times for cluster CR3.

Info for manual annotations of cluster DO:

- Start number 111 was manually annotated 3 times for cluster DO.

Info for manual annotations of cluster DR:

- Start number 100 was manually annotated 2 times for cluster DR.
- Start number 105 was manually annotated 1 time for cluster DR.
- Start number 106 was manually annotated 1 time for cluster DR.
- Start number 116 was manually annotated 8 times for cluster DR.

Info for manual annotations of cluster EB:

- Start number 80 was manually annotated 1 time for cluster EB.
- Start number 92 was manually annotated 6 times for cluster EB.
- Start number 119 was manually annotated 13 times for cluster EB.
- Start number 121 was manually annotated 1 time for cluster EB.
- Start number 122 was manually annotated 10 times for cluster EB.

Info for manual annotations of cluster FG:

- Start number 122 was manually annotated 3 times for cluster FG.

Info for manual annotations of cluster FM:

- Start number 122 was manually annotated 2 times for cluster FM.

Info for manual annotations of cluster FT:

- Start number 98 was manually annotated 1 time for cluster FT.

Gene Information:

Gene: AWGoat_53 Start: 40310, Stop: 40074, Start Num: 97

Candidate Starts for AWGoat_53:

(Start: 97 @40310 has 2 MA's), (124, 40259), (126, 40250), (135, 40211), (137, 40196),

Gene: Abinghost_89 Start: 63262, Stop: 63050, Start Num: 112

Candidate Starts for Abinghost_89:

(87, 63307), (Start: 112 @63262 has 30 MA's), (Start: 122 @63244 has 23 MA's), (Start: 129 @63214 has 2 MA's), (141, 63157), (143, 63139),

Gene: Abt2graduatex2_67 Start: 52651, Stop: 52863, Start Num: 113

Candidate Starts for Abt2graduatex2_67:

(86, 52615), (Start: 113 @52651 has 41 MA's), (124, 52675), (141, 52753), (145, 52774),

Gene: Akino08_32 Start: 24821, Stop: 24624, Start Num: 119

Candidate Starts for Akino08_32:

(Start: 119 @24821 has 13 MA's), (Start: 122 @24815 has 23 MA's), (133, 24761),

Gene: Akoma_89 Start: 63284, Stop: 63090, Start Num: 122

Candidate Starts for Akoma_89:

(87, 63347), (Start: 112 @63302 has 30 MA's), (Start: 122 @63284 has 23 MA's), (Start: 129 @63254 has 2 MA's), (141, 63197), (143, 63179),

Gene: Allegro_72 Start: 59331, Stop: 59107, Start Num: 113

Candidate Starts for Allegro_72:

(44, 59589), (48, 59565), (75, 59427), (Start: 102 @59352 has 6 MA's), (Start: 113 @59331 has 41 MA's), (130, 59277), (152, 59172), (154, 59157),

Gene: Araceli_57 Start: 42438, Stop: 42737, Start Num: 94

Candidate Starts for Araceli_57:

(61, 42309), (76, 42384), (Start: 94 @42438 has 9 MA's), (117, 42483), (Start: 122 @42492 has 23 MA's), (134, 42546), (159, 42678),

Gene: Arbiter_69 Start: 59393, Stop: 59148, Start Num: 102

Candidate Starts for Arbiter_69:

(44, 59630), (48, 59606), (75, 59468), (Start: 102 @59393 has 6 MA's), (Start: 113 @59372 has 41 MA's), (130, 59318), (152, 59213), (154, 59198),

Gene: Ares_72 Start: 59337, Stop: 59113, Start Num: 113

Candidate Starts for Ares_72:

(44, 59595), (48, 59571), (75, 59433), (Start: 102 @59358 has 6 MA's), (Start: 113 @59337 has 41 MA's), (130, 59283), (152, 59178), (154, 59163),

Gene: Armstrong_27 Start: 20896, Stop: 20648, Start Num: 92

Candidate Starts for Armstrong_27:

(Start: 80 @20923 has 1 MA's), (90, 20899), (Start: 92 @20896 has 6 MA's), (103, 20875), (Start: 121 @20839 has 1 MA's), (124, 20827), (133, 20785),

Gene: Arti_9 Start: 5743, Stop: 5994, Start Num: 91

Candidate Starts for Arti_9:

(59, 5623), (60, 5626), (Start: 91 @5743 has 4 MA's), (115, 5791), (144, 5905), (150, 5920), (157, 5980),

Gene: Asis_68 Start: 52546, Stop: 52758, Start Num: 113

Candidate Starts for Asis_68:

(75, 52453), (Start: 113 @52546 has 41 MA's), (124, 52570), (141, 52648), (153, 52708), (161, 52753),

Gene: Athena_91 Start: 63989, Stop: 63825, Start Num: 129

Candidate Starts for Athena_91:

(87, 64082), (Start: 112 @64037 has 30 MA's), (Start: 122 @64019 has 23 MA's), (Start: 129 @63989 has 2 MA's), (141, 63932), (143, 63914),

Gene: Audrey_89 Start: 63291, Stop: 63079, Start Num: 112

Candidate Starts for Audrey_89:

(87, 63336), (Start: 112 @63291 has 30 MA's), (Start: 122 @63273 has 23 MA's), (Start: 129 @63243 has 2 MA's), (141, 63186), (143, 63168),

Gene: AvGardian_33 Start: 23504, Stop: 23307, Start Num: 119

Candidate Starts for AvGardian_33:

(Start: 119 @23504 has 13 MA's), (Start: 122 @23498 has 23 MA's), (133, 23444), (139, 23420),

Gene: Axumite_72 Start: 54547, Stop: 54353, Start Num: 116

Candidate Starts for Axumite_72:

(Start: 116 @54547 has 8 MA's), (133, 54493),

Gene: BAjuniper_29 Start: 23728, Stop: 23537, Start Num: 122

Candidate Starts for BAjuniper_29:

(Start: 119 @23734 has 13 MA's), (Start: 122 @23728 has 23 MA's), (133, 23674), (139, 23650), (146, 23617),

Gene: BabyGotBac_68 Start: 52472, Stop: 52684, Start Num: 113

Candidate Starts for BabyGotBac_68:

(75, 52379), (Start: 113 @52472 has 41 MA's), (141, 52574), (153, 52634), (161, 52679),

Gene: BabyYoda_32 Start: 24023, Stop: 23826, Start Num: 119

Candidate Starts for BabyYoda_32:

(Start: 119 @24023 has 13 MA's), (Start: 122 @24017 has 23 MA's), (133, 23963),

Gene: Bachaco_28 Start: 23946, Stop: 23749, Start Num: 119

Candidate Starts for Bachaco_28:

(Start: 119 @23946 has 13 MA's), (133, 23886), (146, 23829), (156, 23775),

Gene: Baloo_88 Start: 63143, Stop: 62931, Start Num: 112

Candidate Starts for Baloo_88:

(87, 63188), (Start: 112 @63143 has 30 MA's), (Start: 122 @63125 has 23 MA's), (Start: 129 @63095 has 2 MA's), (141, 63038), (143, 63020),

Gene: Bananafish_73 Start: 59267, Stop: 59043, Start Num: 113

Candidate Starts for Bananafish_73:

(44, 59525), (48, 59501), (75, 59363), (Start: 102 @59288 has 6 MA's), (Start: 113 @59267 has 41 MA's), (152, 59108), (154, 59093),

Gene: BayC_67 Start: 52550, Stop: 52762, Start Num: 113

Candidate Starts for BayC_67:

(75, 52457), (Start: 113 @52550 has 41 MA's), (124, 52574), (125, 52577), (141, 52652), (153, 52712), (161, 52757),

Gene: Ben11_89 Start: 63518, Stop: 63306, Start Num: 112

Candidate Starts for Ben11_89:

(87, 63563), (Start: 112 @63518 has 30 MA's), (Start: 122 @63500 has 23 MA's), (Start: 129 @63470 has 2 MA's), (141, 63413), (143, 63395),

Gene: Bernardo_87 Start: 62697, Stop: 62485, Start Num: 108

Candidate Starts for Bernardo_87:

(Start: 85 @62736 has 1 MA's), (Start: 108 @62697 has 8 MA's), (141, 62592), (143, 62574), (146, 62565), (156, 62511),

Gene: Bernstein_27 Start: 20951, Stop: 20703, Start Num: 92

Candidate Starts for Bernstein_27:

(Start: 80 @20978 has 1 MA's), (90, 20954), (Start: 92 @20951 has 6 MA's), (103, 20930), (Start: 121 @20894 has 1 MA's), (124, 20882), (133, 20840),

Gene: Blocker23_72 Start: 59332, Stop: 59108, Start Num: 113

Candidate Starts for Blocker23_72:

(44, 59590), (48, 59566), (75, 59428), (Start: 102 @59353 has 6 MA's), (Start: 113 @59332 has 41 MA's), (152, 59173), (154, 59158),

Gene: BobRoss2024_75 Start: 55799, Stop: 55587, Start Num: 110

Candidate Starts for BobRoss2024_75:

(110, 55799), (138, 55703), (141, 55697), (148, 55667),

Gene: Bogota_58 Start: 42749, Stop: 43051, Start Num: 93

Candidate Starts for Bogota_58:

(1, 41420), (2, 41660), (3, 41729), (4, 41807), (5, 41903), (6, 41912), (7, 42125), (8, 42149), (10, 42164), (12, 42179), (16, 42236), (28, 42365), (29, 42383), (61, 42623), (76, 42698), (Start: 93 @42749 has 6 MA's), (117, 42797), (134, 42860), (159, 42992), (163, 43046),

Gene: Bonum_8 Start: 5088, Stop: 5327, Start Num: 96

Candidate Starts for Bonum_8:

(59, 4953), (60, 4956), (70, 5010), (Start: 96 @5088 has 7 MA's), (Start: 101 @5094 has 1 MA's), (123, 5145), (150, 5256), (157, 5316),

Gene: Boyle_72 Start: 59376, Stop: 59152, Start Num: 113

Candidate Starts for Boyle_72:

(44, 59634), (48, 59610), (75, 59472), (Start: 102 @59397 has 6 MA's), (Start: 113 @59376 has 41 MA's), (130, 59322), (152, 59217), (154, 59202),

Gene: Brahms_27 Start: 20898, Stop: 20650, Start Num: 92

Candidate Starts for Brahms_27:

(Start: 80 @20925 has 1 MA's), (90, 20901), (Start: 92 @20898 has 6 MA's), (103, 20877), (Start: 121 @20841 has 1 MA's), (124, 20829), (133, 20787),

Gene: Briakila_89 Start: 63489, Stop: 63277, Start Num: 112

Candidate Starts for Briakila_89:

(87, 63534), (Start: 112 @63489 has 30 MA's), (Start: 122 @63471 has 23 MA's), (Start: 129 @63441 has 2 MA's), (141, 63384), (143, 63366),

Gene: Brownie5_72 Start: 59377, Stop: 59153, Start Num: 113

Candidate Starts for Brownie5_72:

(44, 59635), (48, 59611), (75, 59473), (Start: 102 @59398 has 6 MA's), (Start: 113 @59377 has 41 MA's), (130, 59323), (152, 59218), (154, 59203),

Gene: BruhMoment_65 Start: 44738, Stop: 44514, Start Num: 104

Candidate Starts for BruhMoment_65:

(40, 45002), (51, 44936), (52, 44933), (57, 44897), (Start: 104 @44738 has 1 MA's), (124, 44693), (130, 44669), (135, 44648), (136, 44642), (139, 44630), (147, 44600),

Gene: Buggaboo_7 Start: 4613, Stop: 4846, Start Num: 101

Candidate Starts for Buggaboo_7:

(30, 4253), (59, 4472), (60, 4475), (70, 4529), (Start: 96 @4607 has 7 MA's), (Start: 101 @4613 has 1 MA's), (123, 4664), (150, 4775), (157, 4835),

Gene: CaiB_74 Start: 56451, Stop: 56221, Start Num: 100

Candidate Starts for CaiB_74:

(19, 56955), (20, 56943), (45, 56667), (47, 56658), (50, 56643), (55, 56616), (63, 56580), (72, 56523), (73, 56520), (Start: 100 @56451 has 2 MA's), (Start: 106 @56439 has 2 MA's), (158, 56232),

Gene: Calamitous_73 Start: 59266, Stop: 59042, Start Num: 113

Candidate Starts for Calamitous_73:

(44, 59524), (48, 59500), (75, 59362), (Start: 102 @59287 has 6 MA's), (Start: 113 @59266 has 41 MA's), (130, 59212), (152, 59107), (154, 59092),

Gene: Casbah_89 Start: 63602, Stop: 63390, Start Num: 112

Candidate Starts for Casbah_89:

(Start: 85 @63656 has 1 MA's), (87, 63647), (Start: 112 @63602 has 30 MA's), (Start: 122 @63584 has 23 MA's), (Start: 129 @63554 has 2 MA's), (141, 63497), (143, 63479),

Gene: Celaena_28 Start: 23631, Stop: 23434, Start Num: 119

Candidate Starts for Celaena_28:

(Start: 119 @23631 has 13 MA's), (133, 23571), (146, 23514), (156, 23460),

Gene: ChaChing_89 Start: 63304, Stop: 63092, Start Num: 112

Candidate Starts for ChaChing_89:

(87, 63349), (Start: 112 @63304 has 30 MA's), (Start: 122 @63286 has 23 MA's), (Start: 129 @63256 has 2 MA's), (141, 63199), (143, 63181),

Gene: Chalmers_88 Start: 63737, Stop: 63525, Start Num: 112

Candidate Starts for Chalmers_88:

(87, 63782), (Start: 112 @63737 has 30 MA's), (Start: 122 @63719 has 23 MA's), (Start: 129 @63689 has 2 MA's), (141, 63632), (143, 63614),

Gene: Chandler_89 Start: 64060, Stop: 63866, Start Num: 122

Candidate Starts for Chandler_89:

(87, 64123), (Start: 112 @64078 has 30 MA's), (Start: 122 @64060 has 23 MA's), (Start: 129 @64030 has 2 MA's), (141, 63973), (143, 63955),

Gene: CharlottesWeb_70 Start: 53821, Stop: 53621, Start Num: 116

Candidate Starts for CharlottesWeb_70:

(Start: 116 @53821 has 8 MA's),

Gene: Chentzyk_91 Start: 64236, Stop: 64024, Start Num: 112

Candidate Starts for Chentzyk_91:

(87, 64281), (Start: 112 @64236 has 30 MA's), (Start: 122 @64218 has 23 MA's), (Start: 129 @64188 has 2 MA's), (141, 64131), (143, 64113),

Gene: CherryTomatoes_188 Start: 133666, Stop: 133899, Start Num: 111

Candidate Starts for CherryTomatoes_188:

(Start: 111 @133666 has 3 MA's), (148, 133807), (151, 133816), (155, 133849),

Gene: Clayda5_28 Start: 20885, Stop: 20637, Start Num: 92

Candidate Starts for Clayda5_28:

(Start: 80 @20912 has 1 MA's), (90, 20888), (Start: 92 @20885 has 6 MA's), (103, 20864), (Start: 121 @20828 has 1 MA's), (124, 20816), (133, 20774),

Gene: Coffee_72 Start: 59370, Stop: 59146, Start Num: 113

Candidate Starts for Coffee_72:

(44, 59628), (48, 59604), (75, 59466), (Start: 102 @59391 has 6 MA's), (Start: 113 @59370 has 41 MA's), (130, 59316), (152, 59211), (154, 59196),

Gene: Coldpizza_66 Start: 54844, Stop: 54632, Start Num: 105

Candidate Starts for Coldpizza_66:

(64, 54964), (66, 54955), (68, 54934), (Start: 105 @54844 has 1 MA's), (143, 54721),

Gene: Coltrane_27 Start: 20898, Stop: 20650, Start Num: 92

Candidate Starts for Coltrane_27:

(Start: 80 @20925 has 1 MA's), (90, 20901), (Start: 92 @20898 has 6 MA's), (103, 20877), (Start: 121 @20841 has 1 MA's), (124, 20829), (133, 20787),

Gene: Compostia_88 Start: 63744, Stop: 63532, Start Num: 112

Candidate Starts for Compostia_88:

(Start: 85 @63798 has 1 MA's), (87, 63789), (Start: 112 @63744 has 30 MA's), (Start: 122 @63726 has 23 MA's), (Start: 129 @63696 has 2 MA's), (141, 63639), (143, 63621),

Gene: Corofin_89 Start: 63313, Stop: 63101, Start Num: 112

Candidate Starts for Corofin_89:

(87, 63358), (Start: 112 @63313 has 30 MA's), (Start: 122 @63295 has 23 MA's), (Start: 129 @63265 has 2 MA's), (141, 63208), (143, 63190),

Gene: Crosby_59 Start: 42804, Stop: 43103, Start Num: 94

Candidate Starts for Crosby_59:

(13, 42252), (26, 42360), (61, 42675), (76, 42750), (Start: 94 @42804 has 9 MA's), (117, 42849), (134, 42912), (159, 43044), (163, 43098),

Gene: Daisy_88 Start: 62846, Stop: 62652, Start Num: 122

Candidate Starts for Daisy_88:

(87, 62909), (Start: 112 @62864 has 30 MA's), (Start: 122 @62846 has 23 MA's), (Start: 129 @62816 has 2 MA's), (141, 62759), (143, 62741),

Gene: Dalilpop_10 Start: 5833, Stop: 6087, Start Num: 88

Candidate Starts for Dalilpop_10:

(35, 5575), (39, 5608), (69, 5776), (Start: 88 @5833 has 8 MA's), (Start: 91 @5836 has 4 MA's), (107, 5869), (127, 5917), (154, 6049), (157, 6076),

Gene: Deenasa_89 Start: 64213, Stop: 64001, Start Num: 112

Candidate Starts for Deenasa_89:

(87, 64258), (Start: 112 @64213 has 30 MA's), (Start: 122 @64195 has 23 MA's), (Start: 129 @64165 has 2 MA's), (141, 64108), (143, 64090),

Gene: Devonte_87 Start: 62930, Stop: 62718, Start Num: 112

Candidate Starts for Devonte_87:

(87, 62975), (Start: 112 @62930 has 30 MA's), (Start: 122 @62912 has 23 MA's), (Start: 129 @62882 has 2 MA's), (141, 62825), (143, 62807),

Gene: DirtyBubble_31 Start: 23650, Stop: 23453, Start Num: 119

Candidate Starts for DirtyBubble_31:

(Start: 119 @23650 has 13 MA's), (Start: 122 @23644 has 23 MA's), (133, 23590),

Gene: Dismas_28 Start: 23310, Stop: 23113, Start Num: 119

Candidate Starts for Dismas_28:

(Start: 119 @23310 has 13 MA's), (Start: 122 @23304 has 23 MA's), (133, 23250), (160, 23118),

Gene: Eaglehorse_72 Start: 59256, Stop: 59032, Start Num: 113

Candidate Starts for Eaglehorse_72:

(44, 59514), (48, 59490), (75, 59352), (Start: 102 @59277 has 6 MA's), (Start: 113 @59256 has 41 MA's), (130, 59202), (152, 59097), (154, 59082),

Gene: Eden_27 Start: 21061, Stop: 20870, Start Num: 122

Candidate Starts for Eden_27:

(15, 21646), (23, 21586), (33, 21415), (46, 21322), (53, 21289), (Start: 122 @21061 has 23 MA's), (124, 21049), (143, 20959), (144, 20956), (160, 20875),

Gene: Elva_32 Start: 23679, Stop: 23488, Start Num: 122

Candidate Starts for Elva_32:

(Start: 119 @23685 has 13 MA's), (Start: 122 @23679 has 23 MA's), (133, 23625),

Gene: Ennea_12 Start: 6510, Stop: 6764, Start Num: 88

Candidate Starts for Ennea_12:

(38, 6291), (81, 6489), (82, 6492), (Start: 88 @6510 has 8 MA's), (133, 6624), (154, 6726), (157, 6753),

Gene: Faze9_71 Start: 59394, Stop: 59170, Start Num: 113

Candidate Starts for Faze9_71:

(44, 59652), (48, 59628), (75, 59490), (Start: 102 @59415 has 6 MA's), (Start: 113 @59394 has 41 MA's), (130, 59340), (152, 59235), (154, 59220),

Gene: FlameThrower_28 Start: 23117, Stop: 22920, Start Num: 119

Candidate Starts for FlameThrower_28:

(Start: 119 @23117 has 13 MA's), (133, 23057), (146, 23000), (156, 22946),

Gene: Flapper_8 Start: 4720, Stop: 4974, Start Num: 88

Candidate Starts for Flapper_8:

(Start: 88 @4720 has 8 MA's), (Start: 91 @4723 has 4 MA's), (107, 4756), (127, 4804), (154, 4936), (157, 4963),

Gene: Float294_11 Start: 6342, Stop: 6596, Start Num: 88

Candidate Starts for Float294_11:

(27, 5922), (38, 6105), (74, 6291), (81, 6321), (82, 6324), (Start: 88 @6342 has 8 MA's), (130, 6438), (133, 6456), (154, 6558), (157, 6585),

Gene: Franklin22_28 Start: 21221, Stop: 21030, Start Num: 122

Candidate Starts for Franklin22_28:

(84, 21296), (Start: 122 @21221 has 23 MA's), (124, 21209), (143, 21119), (144, 21116),

Gene: FrenchFry_73 Start: 59381, Stop: 59157, Start Num: 113

Candidate Starts for FrenchFry_73:

(44, 59639), (48, 59615), (75, 59477), (Start: 102 @59402 has 6 MA's), (Start: 113 @59381 has 41 MA's), (130, 59327), (152, 59222), (154, 59207),

Gene: Fresco_72 Start: 54553, Stop: 54359, Start Num: 116

Candidate Starts for Fresco_72:

(Start: 116 @54553 has 8 MA's), (133, 54499),

Gene: GRU1_92 Start: 64016, Stop: 64270, Start Num: 88

Candidate Starts for GRU1_92:

(35, 63758), (39, 63791), (69, 63959), (Start: 88 @64016 has 8 MA's), (Start: 91 @64019 has 4 MA's), (107, 64052), (127, 64100), (154, 64232), (157, 64259),

Gene: GTE5_91 Start: 64905, Stop: 65159, Start Num: 88

Candidate Starts for GTE5_91:

(Start: 88 @64905 has 8 MA's), (Start: 91 @64908 has 4 MA's), (107, 64941), (127, 64989), (144, 65073), (154, 65121), (157, 65148),

Gene: Gack_27 Start: 21104, Stop: 20913, Start Num: 122

Candidate Starts for Gack_27:

(77, 21206), (78, 21203), (115, 21116), (Start: 122 @21104 has 23 MA's), (124, 21092), (144, 20999), (146, 20993),

Gene: Gadjet_87 Start: 62880, Stop: 62668, Start Num: 108

Candidate Starts for Gadjet_87:

(Start: 85 @62919 has 1 MA's), (Start: 108 @62880 has 8 MA's), (141, 62775), (143, 62757), (146, 62748), (156, 62694),

Gene: Gervas_90 Start: 63758, Stop: 63546, Start Num: 112

Candidate Starts for Gervas_90:

(87, 63803), (Start: 112 @63758 has 30 MA's), (Start: 122 @63740 has 23 MA's), (Start: 129 @63710 has 2 MA's), (141, 63653), (143, 63635),

Gene: Glass_74 Start: 59382, Stop: 59158, Start Num: 113

Candidate Starts for Glass_74:

(44, 59640), (48, 59616), (75, 59478), (Start: 102 @59403 has 6 MA's), (Start: 113 @59382 has 41 MA's), (130, 59328), (152, 59223), (154, 59208),

Gene: GlenHope_90 Start: 63334, Stop: 63122, Start Num: 112

Candidate Starts for GlenHope_90:

(87, 63379), (Start: 112 @63334 has 30 MA's), (Start: 122 @63316 has 23 MA's), (Start: 129 @63286 has 2 MA's), (141, 63229), (143, 63211),

Gene: Glubnar_89 Start: 63012, Stop: 62800, Start Num: 108

Candidate Starts for Glubnar_89:

(Start: 85 @63051 has 1 MA's), (Start: 108 @63012 has 8 MA's), (141, 62907), (143, 62889), (146, 62880), (156, 62826),

Gene: Godines_73 Start: 59635, Stop: 59411, Start Num: 113

Candidate Starts for Godines_73:

(44, 59893), (48, 59869), (75, 59731), (Start: 102 @59656 has 6 MA's), (Start: 113 @59635 has 41 MA's), (130, 59581), (152, 59476), (154, 59461),

Gene: GrootJr_11 Start: 6138, Stop: 6389, Start Num: 91

Candidate Starts for GrootJr_11:

(59, 6018), (60, 6021), (Start: 91 @6138 has 4 MA's), (115, 6186), (144, 6300), (150, 6315), (157, 6375),

Gene: Halfpint_88 Start: 63076, Stop: 62864, Start Num: 112

Candidate Starts for Halfpint_88:

(Start: 85 @63130 has 1 MA's), (87, 63121), (Start: 112 @63076 has 30 MA's), (Start: 122 @63058 has 23 MA's), (Start: 129 @63028 has 2 MA's), (141, 62971), (143, 62953),

Gene: HarveySr_86 Start: 62323, Stop: 62111, Start Num: 108

Candidate Starts for HarveySr_86:

(Start: 85 @62362 has 1 MA's), (Start: 108 @62323 has 8 MA's), (141, 62218), (143, 62200), (146, 62191), (156, 62137),

Gene: Heathcliff_89 Start: 63240, Stop: 63046, Start Num: 122

Candidate Starts for Heathcliff_89:

(87, 63303), (Start: 112 @63258 has 30 MA's), (Start: 122 @63240 has 23 MA's), (Start: 129 @63210 has 2 MA's), (141, 63153), (143, 63135),

Gene: Hedgerow_72 Start: 59353, Stop: 59108, Start Num: 102

Candidate Starts for Hedgerow_72:

(44, 59590), (48, 59566), (75, 59428), (Start: 102 @59353 has 6 MA's), (Start: 113 @59332 has 41 MA's), (130, 59278), (152, 59173), (154, 59158),

Gene: Henococcus_58 Start: 42450, Stop: 42749, Start Num: 94

Candidate Starts for Henococcus_58:

(61, 42321), (76, 42396), (Start: 94 @42450 has 9 MA's), (117, 42495), (Start: 122 @42504 has 23 MA's), (134, 42558), (159, 42690),

Gene: Holeinone_72 Start: 59237, Stop: 59013, Start Num: 113

Candidate Starts for Holeinone_72:

(44, 59495), (48, 59471), (75, 59333), (Start: 102 @59258 has 6 MA's), (Start: 113 @59237 has 41 MA's), (152, 59078), (154, 59063),

Gene: Icarian_34 Start: 24278, Stop: 24087, Start Num: 122

Candidate Starts for Icarian_34:

(Start: 119 @24284 has 13 MA's), (Start: 122 @24278 has 23 MA's), (133, 24224),

Gene: Intolerant_55 Start: 42453, Stop: 42755, Start Num: 93

Candidate Starts for Intolerant_55:

(61, 42327), (76, 42402), (Start: 93 @42453 has 6 MA's), (117, 42501), (134, 42564), (159, 42696), (163, 42750),

Gene: ItsyBitsy1_70 Start: 59473, Stop: 59249, Start Num: 113

Candidate Starts for ItsyBitsy1_70:

(44, 59731), (48, 59707), (75, 59569), (Start: 102 @59494 has 6 MA's), (Start: 113 @59473 has 41 MA's), (152, 59314), (154, 59299),

Gene: JackieB_58 Start: 42282, Stop: 42581, Start Num: 94

Candidate Starts for JackieB_58:

(61, 42153), (76, 42228), (Start: 94 @42282 has 9 MA's), (117, 42327), (Start: 122 @42336 has 23 MA's), (134, 42390), (159, 42522),

Gene: Jackstina_83 Start: 63172, Stop: 62960, Start Num: 112

Candidate Starts for Jackstina_83:

(Start: 85 @63226 has 1 MA's), (87, 63217), (Start: 112 @63172 has 30 MA's), (Start: 122 @63154 has 23 MA's), (Start: 129 @63124 has 2 MA's), (141, 63067), (143, 63049),

Gene: Kabluna_8 Start: 4479, Stop: 4718, Start Num: 96

Candidate Starts for Kabluna_8:

(59, 4344), (60, 4347), (70, 4401), (Start: 96 @4479 has 7 MA's), (Start: 101 @4485 has 1 MA's), (123, 4536), (150, 4647), (157, 4707),

Gene: Kaleb_72 Start: 59388, Stop: 59164, Start Num: 113

Candidate Starts for Kaleb_72:

(44, 59646), (48, 59622), (75, 59484), (Start: 102 @59409 has 6 MA's), (Start: 113 @59388 has 41 MA's), (130, 59334), (152, 59229), (154, 59214),

Gene: Kamdara_28 Start: 23303, Stop: 23112, Start Num: 122

Candidate Starts for Kamdara_28:

(Start: 119 @23309 has 13 MA's), (Start: 122 @23303 has 23 MA's), (133, 23249), (146, 23192), (160, 23117),

Gene: Kamiyu_89 Start: 63243, Stop: 63049, Start Num: 122

Candidate Starts for Kamiyu_89:

(87, 63306), (Start: 112 @63261 has 30 MA's), (Start: 122 @63243 has 23 MA's), (Start: 129 @63213 has 2 MA's), (141, 63156), (143, 63138),

Gene: Katzastrophic_28 Start: 23235, Stop: 23038, Start Num: 119

Candidate Starts for Katzastrophic_28:

(Start: 119 @23235 has 13 MA's), (133, 23175), (146, 23118), (156, 23064),

Gene: Kharcho_35 Start: 14505, Stop: 14696, Start Num: 122

Candidate Starts for Kharcho_35:

(Start: 122 @14505 has 23 MA's), (124, 14517),

Gene: Kheth_72 Start: 59299, Stop: 59075, Start Num: 113

Candidate Starts for Kheth_72:

(44, 59557), (48, 59533), (75, 59395), (Start: 102 @59320 has 6 MA's), (Start: 113 @59299 has 41 MA's), (130, 59245), (152, 59140), (154, 59125),

Gene: Kieran_28 Start: 23307, Stop: 23116, Start Num: 122

Candidate Starts for Kieran_28:

(Start: 119 @23313 has 13 MA's), (Start: 122 @23307 has 23 MA's), (133, 23253), (160, 23121),

Gene: Kolhan_73 Start: 59276, Stop: 59052, Start Num: 113

Candidate Starts for Kolhan_73:

(44, 59534), (48, 59510), (75, 59372), (Start: 102 @59297 has 6 MA's), (Start: 113 @59276 has 41 MA's), (130, 59222), (152, 59117), (154, 59102),

Gene: Kronus_89 Start: 64345, Stop: 64133, Start Num: 112

Candidate Starts for Kronus_89:

(Start: 85 @64399 has 1 MA's), (87, 64390), (Start: 112 @64345 has 30 MA's), (Start: 122 @64327 has 23 MA's), (Start: 129 @64297 has 2 MA's), (141, 64240), (143, 64222),

Gene: Lars_73 Start: 59360, Stop: 59136, Start Num: 113

Candidate Starts for Lars_73:

(44, 59618), (48, 59594), (75, 59456), (Start: 102 @59381 has 6 MA's), (Start: 113 @59360 has 41 MA's), (130, 59306), (152, 59201), (154, 59186),

Gene: Laurie_73 Start: 59044, Stop: 58820, Start Num: 113

Candidate Starts for Laurie_73:

(44, 59302), (48, 59278), (75, 59140), (Start: 102 @59065 has 6 MA's), (Start: 113 @59044 has 41 MA's), (130, 58990), (152, 58885), (154, 58870),

Gene: LazerLemon_58 Start: 42972, Stop: 43271, Start Num: 94

Candidate Starts for LazerLemon_58:

(22, 42498), (28, 42582), (29, 42600), (32, 42627), (61, 42843), (76, 42918), (Start: 93 @42969 has 6 MA's), (Start: 94 @42972 has 9 MA's), (117, 43017), (Start: 122 @43026 has 23 MA's), (127, 43050), (134, 43080), (159, 43212), (163, 43266),

Gene: Lephleur_72 Start: 59222, Stop: 58998, Start Num: 113

Candidate Starts for Lephleur_72:

(44, 59480), (48, 59456), (75, 59318), (Start: 102 @59243 has 6 MA's), (Start: 113 @59222 has 41 MA's), (130, 59168), (152, 59063), (154, 59048),

Gene: LestyG_87 Start: 62831, Stop: 62619, Start Num: 112

Candidate Starts for LestyG_87:

(87, 62876), (Start: 112 @62831 has 30 MA's), (Start: 122 @62813 has 23 MA's), (Start: 129 @62783 has 2 MA's), (141, 62726), (143, 62708),

Gene: Ligma_72 Start: 54547, Stop: 54353, Start Num: 116

Candidate Starts for Ligma_72:

(Start: 116 @54547 has 8 MA's), (133, 54493),

Gene: LilSmirk_72 Start: 59259, Stop: 59035, Start Num: 113

Candidate Starts for LilSmirk_72:

(44, 59517), (48, 59493), (75, 59355), (Start: 102 @59280 has 6 MA's), (Start: 113 @59259 has 41 MA's), (130, 59205), (152, 59100), (154, 59085),

Gene: LittleMunchkin_72 Start: 57116, Stop: 56916, Start Num: 116

Candidate Starts for LittleMunchkin_72:

(Start: 116 @57116 has 8 MA's), (141, 57023),

Gene: LizLemon_72 Start: 59387, Stop: 59163, Start Num: 113

Candidate Starts for LizLemon_72:

(44, 59645), (48, 59621), (75, 59483), (Start: 102 @59408 has 6 MA's), (Start: 113 @59387 has 41 MA's), (130, 59333), (152, 59228), (154, 59213),

Gene: Loviatar_33 Start: 24836, Stop: 24639, Start Num: 119

Candidate Starts for Loviatar_33:

(Start: 119 @24836 has 13 MA's), (Start: 122 @24830 has 23 MA's), (133, 24776),

Gene: Magritte_85 Start: 68142, Stop: 68354, Start Num: 118

Candidate Starts for Magritte_85:

(Start: 118 @68142 has 1 MA's), (144, 68256), (157, 68328),

Gene: Maih_66 Start: 52563, Stop: 52775, Start Num: 113

Candidate Starts for Maih_66:

(75, 52470), (Start: 113 @52563 has 41 MA's), (124, 52587), (141, 52665), (153, 52725), (161, 52770),

Gene: Mariokart_70 Start: 54105, Stop: 53905, Start Num: 116

Candidate Starts for Mariokart_70:

(Start: 116 @54105 has 8 MA's),

Gene: Marky_61 Start: 43378, Stop: 43677, Start Num: 94

Candidate Starts for Marky_61:

(Start: 91 @43372 has 4 MA's), (Start: 94 @43378 has 9 MA's), (134, 43486), (162, 43648),

Gene: Marley1013_88 Start: 63672, Stop: 63460, Start Num: 108

Candidate Starts for Marley1013_88:

(Start: 85 @63711 has 1 MA's), (Start: 108 @63672 has 8 MA's), (141, 63567), (143, 63549), (146, 63540), (156, 63486),

Gene: Marlia_90 Start: 63709, Stop: 63515, Start Num: 122

Candidate Starts for Marlia_90:

(Start: 85 @63781 has 1 MA's), (87, 63772), (Start: 112 @63727 has 30 MA's), (Start: 122 @63709 has 23 MA's), (Start: 129 @63679 has 2 MA's), (141, 63622), (143, 63604),

Gene: Maruru_57 Start: 42255, Stop: 42449, Start Num: 122

Candidate Starts for Maruru_57:

(60, 42069), (87, 42189), (Start: 122 @42255 has 23 MA's), (124, 42267), (131, 42297), (140, 42342), (142, 42354),

Gene: MasterPo_73 Start: 59254, Stop: 59030, Start Num: 113

Candidate Starts for MasterPo_73:

(44, 59512), (48, 59488), (75, 59350), (Start: 102 @59275 has 6 MA's), (Start: 113 @59254 has 41 MA's), (130, 59200), (152, 59095), (154, 59080),

Gene: MerCougar_7 Start: 4830, Stop: 5069, Start Num: 96

Candidate Starts for MerCougar_7:

(60, 4692), (70, 4746), (Start: 96 @4830 has 7 MA's), (123, 4887), (150, 4998), (157, 5058),

Gene: Microdon_57 Start: 42516, Stop: 42818, Start Num: 93

Candidate Starts for Microdon_57:

(61, 42390), (76, 42465), (Start: 93 @42516 has 6 MA's), (117, 42564), (134, 42627), (159, 42759), (163, 42813),

Gene: Mischief19_73 Start: 61963, Stop: 62172, Start Num: 120

Candidate Starts for Mischief19_73:

(Start: 120 @61963 has 1 MA's),

Gene: MmasiCarm_90 Start: 63688, Stop: 63476, Start Num: 112

Candidate Starts for MmasiCarm_90:

(87, 63733), (Start: 112 @63688 has 30 MA's), (Start: 122 @63670 has 23 MA's), (Start: 129 @63640 has 2 MA's), (141, 63583), (143, 63565),

Gene: Mortcellus_89 Start: 64408, Stop: 64214, Start Num: 122

Candidate Starts for Mortcellus_89:

(87, 64471), (Start: 112 @64426 has 30 MA's), (Start: 122 @64408 has 23 MA's), (Start: 129 @64378 has 2 MA's), (141, 64321), (143, 64303),

Gene: Morty007_86 Start: 63672, Stop: 63460, Start Num: 108

Candidate Starts for Morty007_86:

(Start: 85 @63711 has 1 MA's), (Start: 108 @63672 has 8 MA's), (141, 63567), (143, 63549), (146, 63540), (156, 63486),

Gene: Mufasa8_58 Start: 41034, Stop: 41228, Start Num: 122

Candidate Starts for Mufasa8_58:

(Start: 122 @41034 has 23 MA's),

Gene: Mulaychimus_90 Start: 63689, Stop: 63495, Start Num: 122

Candidate Starts for Mulaychimus_90:

(9, 64346), (11, 64331), (31, 64088), (87, 63752), (Start: 112 @63707 has 30 MA's), (Start: 122 @63689 has 23 MA's), (Start: 129 @63659 has 2 MA's), (141, 63602), (143, 63584),

Gene: Neos5_87 Start: 63173, Stop: 62922, Start Num: 85

Candidate Starts for Neos5_87:

(Start: 85 @63173 has 1 MA's), (Start: 108 @63134 has 8 MA's), (141, 63029), (143, 63011), (146, 63002), (156, 62948),

Gene: NosilaM_8 Start: 5367, Stop: 5606, Start Num: 96

Candidate Starts for NosilaM_8:

(59, 5232), (60, 5235), (70, 5289), (Start: 96 @5367 has 7 MA's), (Start: 101 @5373 has 1 MA's), (123, 5424), (150, 5535), (157, 5595),

Gene: NovumRegina_9 Start: 6137, Stop: 6388, Start Num: 91

Candidate Starts for NovumRegina_9:

(59, 6017), (60, 6020), (Start: 91 @6137 has 4 MA's), (115, 6185), (144, 6299), (150, 6314), (157, 6374),

Gene: Nozo_89 Start: 64068, Stop: 63856, Start Num: 112

Candidate Starts for Nozo_89:

(Start: 85 @64122 has 1 MA's), (87, 64113), (Start: 112 @64068 has 30 MA's), (Start: 122 @64050 has 23 MA's), (Start: 129 @64020 has 2 MA's), (141, 63963), (143, 63945),

Gene: Obutu_91 Start: 63871, Stop: 63659, Start Num: 112

Candidate Starts for Obutu_91:

(87, 63916), (Start: 112 @63871 has 30 MA's), (Start: 122 @63853 has 23 MA's), (Start: 129 @63823 has 2 MA's), (141, 63766), (143, 63748),

Gene: Olivio_89 Start: 63491, Stop: 63297, Start Num: 122

Candidate Starts for Olivio_89:

(87, 63554), (Start: 112 @63509 has 30 MA's), (Start: 122 @63491 has 23 MA's), (Start: 129 @63461 has 2 MA's), (141, 63404), (143, 63386),

Gene: Opia_73 Start: 59301, Stop: 59056, Start Num: 102

Candidate Starts for Opia_73:

(44, 59538), (48, 59514), (75, 59376), (Start: 102 @59301 has 6 MA's), (Start: 113 @59280 has 41 MA's), (130, 59226), (152, 59121), (154, 59106),

Gene: OrangeOswald_88 Start: 63303, Stop: 63091, Start Num: 112

Candidate Starts for OrangeOswald_88:

(87, 63348), (Start: 112 @63303 has 30 MA's), (Start: 122 @63285 has 23 MA's), (Start: 129 @63255 has 2 MA's), (141, 63198), (143, 63180),

Gene: Ottawa_35 Start: 14503, Stop: 14694, Start Num: 122

Candidate Starts for Ottawa_35:

(Start: 122 @14503 has 23 MA's), (124, 14515),

Gene: Outis_7 Start: 4521, Stop: 4760, Start Num: 96

Candidate Starts for Outis_7:

(60, 4383), (70, 4437), (Start: 96 @4521 has 7 MA's), (123, 4578), (150, 4689), (157, 4749),

Gene: Patio_12 Start: 7018, Stop: 7272, Start Num: 88

Candidate Starts for Patio_12:

(27, 6598), (38, 6781), (81, 6997), (82, 7000), (Start: 88 @7018 has 8 MA's), (130, 7114), (133, 7132), (154, 7234), (157, 7261),

Gene: Phaedrus_84 Start: 62701, Stop: 62507, Start Num: 122

Candidate Starts for Phaedrus_84:

(87, 62764), (Start: 112 @62719 has 30 MA's), (Start: 122 @62701 has 23 MA's), (Start: 129 @62671 has 2 MA's), (141, 62614), (143, 62596),

Gene: Phantasmagoria_71 Start: 59269, Stop: 59045, Start Num: 113

Candidate Starts for Phantasmagoria_71:

(44, 59527), (48, 59503), (75, 59365), (Start: 102 @59290 has 6 MA's), (Start: 113 @59269 has 41 MA's), (130, 59215), (152, 59110), (154, 59095),

Gene: Phayeta_92 Start: 63775, Stop: 63563, Start Num: 108

Candidate Starts for Phayeta_92:

(Start: 85 @63814 has 1 MA's), (Start: 108 @63775 has 8 MA's), (141, 63670), (143, 63652), (146, 63643), (156, 63589),

Gene: Philly_88 Start: 63149, Stop: 62937, Start Num: 112

Candidate Starts for Philly_88:

(Start: 85 @63203 has 1 MA's), (87, 63194), (Start: 112 @63149 has 30 MA's), (Start: 122 @63131 has 23 MA's), (Start: 129 @63101 has 2 MA's), (141, 63044), (143, 63026),

Gene: Phlyer_89 Start: 63966, Stop: 63802, Start Num: 129

Candidate Starts for Phlyer_89:

(87, 64059), (Start: 112 @64014 has 30 MA's), (Start: 122 @63996 has 23 MA's), (Start: 129 @63966 has 2 MA's), (141, 63909), (143, 63891),

Gene: PondAmelia_41 Start: 23850, Stop: 23653, Start Num: 119

Candidate Starts for PondAmelia_41:

(Start: 119 @23850 has 13 MA's), (Start: 122 @23844 has 23 MA's), (133, 23790),

Gene: PrinceCharming_73 Start: 59309, Stop: 59085, Start Num: 113

Candidate Starts for PrinceCharming_73:

(44, 59567), (48, 59543), (75, 59405), (Start: 102 @59330 has 6 MA's), (Start: 113 @59309 has 41 MA's), (152, 59150), (154, 59135),

Gene: Pupper_186 Start: 133528, Stop: 133761, Start Num: 111

Candidate Starts for Pupper_186:

(Start: 111 @133528 has 3 MA's), (148, 133669), (151, 133678), (155, 133711),

Gene: Quenya_29 Start: 23125, Stop: 22928, Start Num: 119

Candidate Starts for Quenya_29:

(43, 23398), (49, 23365), (54, 23341), (58, 23308), (65, 23287), (67, 23275), (71, 23245), (83, 23200), (99, 23161), (Start: 119 @23125 has 13 MA's), (Start: 122 @23119 has 23 MA's), (133, 23065), (146, 23008), (160, 22933),

Gene: Qyrzula_65 Start: 59423, Stop: 59178, Start Num: 102

Candidate Starts for Qyrzula_65:

(44, 59660), (48, 59636), (75, 59498), (Start: 102 @59423 has 6 MA's), (Start: 113 @59402 has 41 MA's), (130, 59348), (152, 59243), (154, 59228),

Gene: RagingRooster_88 Start: 62994, Stop: 62782, Start Num: 112

Candidate Starts for RagingRooster_88:

(87, 63039), (Start: 112 @62994 has 30 MA's), (Start: 122 @62976 has 23 MA's), (Start: 129 @62946 has 2 MA's), (141, 62889), (143, 62871),

Gene: RainyPolka_66 Start: 52034, Stop: 52246, Start Num: 113

Candidate Starts for RainyPolka_66:

(86, 51998), (Start: 113 @52034 has 41 MA's), (124, 52058), (141, 52136),

Gene: RedRaider_12 Start: 6444, Stop: 6698, Start Num: 88

Candidate Starts for RedRaider_12:

(38, 6201), (81, 6423), (82, 6426), (Start: 88 @6444 has 8 MA's), (154, 6660), (157, 6687),

Gene: Rhinoforte_72 Start: 59307, Stop: 59083, Start Num: 113

Candidate Starts for Rhinoforte_72:

(44, 59565), (48, 59541), (75, 59403), (Start: 102 @59328 has 6 MA's), (Start: 113 @59307 has 41 MA's), (130, 59253), (152, 59148), (154, 59133),

Gene: Rinkes_81 Start: 64713, Stop: 64441, Start Num: 89

Candidate Starts for Rinkes_81:

(18, 65202), (21, 65178), (24, 65169), (34, 64995), (41, 64944), (42, 64935), (Start: 89 @64713 has 1 MA's), (134, 64602),

Gene: Rita1961_90 Start: 63645, Stop: 63433, Start Num: 112

Candidate Starts for Rita1961_90:

(Start: 85 @63699 has 1 MA's), (87, 63690), (Start: 112 @63645 has 30 MA's), (Start: 122 @63627 has 23 MA's), (Start: 129 @63597 has 2 MA's), (141, 63540), (143, 63522),

Gene: Rizwana_57 Start: 42532, Stop: 42281, Start Num: 94

Candidate Starts for Rizwana_57:

(56, 42676), (Start: 94 @42532 has 9 MA's), (128, 42454), (132, 42433),

Gene: Rollins_27 Start: 20951, Stop: 20703, Start Num: 92

Candidate Starts for Rollins_27:

(Start: 80 @20978 has 1 MA's), (90, 20954), (Start: 92 @20951 has 6 MA's), (103, 20930), (Start: 121 @20894 has 1 MA's), (124, 20882), (133, 20840),

Gene: RomaT_89 Start: 63868, Stop: 63656, Start Num: 112

Candidate Starts for RomaT_89:

(87, 63913), (Start: 112 @63868 has 30 MA's), (Start: 122 @63850 has 23 MA's), (Start: 129 @63820 has 2 MA's), (141, 63763), (143, 63745),

Gene: RomansRevenge_60 Start: 43210, Stop: 42971, Start Num: 98

Candidate Starts for RomansRevenge_60:

(62, 43345), (Start: 98 @43210 has 1 MA's), (128, 43144), (130, 43135), (135, 43111), (156, 43012),

Gene: Rona_28 Start: 23304, Stop: 23113, Start Num: 122

Candidate Starts for Rona_28:

(Start: 119 @23310 has 13 MA's), (Start: 122 @23304 has 23 MA's), (133, 23250), (160, 23118),

Gene: Rosebush_70 Start: 59374, Stop: 59150, Start Num: 113

Candidate Starts for Rosebush_70:

(44, 59632), (48, 59608), (75, 59470), (Start: 102 @59395 has 6 MA's), (Start: 113 @59374 has 41 MA's), (130, 59320), (152, 59215), (154, 59200),

Gene: SCentae_185 Start: 133720, Stop: 133953, Start Num: 111
Candidate Starts for SCentae_185:
(Start: 111 @133720 has 3 MA's), (148, 133861), (151, 133870), (155, 133903),

Gene: Sabella_72 Start: 59209, Stop: 58985, Start Num: 113
Candidate Starts for Sabella_72:
(44, 59467), (48, 59443), (75, 59305), (Start: 102 @59230 has 6 MA's), (Start: 113 @59209 has 41 MA's), (130, 59155), (152, 59050), (154, 59035),

Gene: Salete_67 Start: 52550, Stop: 52762, Start Num: 113
Candidate Starts for Salete_67:
(75, 52457), (Start: 113 @52550 has 41 MA's), (124, 52574), (125, 52577), (141, 52652), (153, 52712), (161, 52757),

Gene: SanaSana_34 Start: 24486, Stop: 24289, Start Num: 119
Candidate Starts for SanaSana_34:
(Start: 119 @24486 has 13 MA's), (Start: 122 @24480 has 23 MA's), (133, 24426),

Gene: Sharkboy_29 Start: 23394, Stop: 23197, Start Num: 119
Candidate Starts for Sharkboy_29:
(Start: 119 @23394 has 13 MA's), (Start: 122 @23388 has 23 MA's), (133, 23334), (146, 23277), (160, 23202),

Gene: Shatter_72 Start: 54547, Stop: 54353, Start Num: 116
Candidate Starts for Shatter_72:
(Start: 116 @54547 has 8 MA's), (133, 54493),

Gene: Shenandoah_88 Start: 62896, Stop: 62702, Start Num: 122
Candidate Starts for Shenandoah_88:
(87, 62959), (Start: 112 @62914 has 30 MA's), (Start: 122 @62896 has 23 MA's), (Start: 129 @62866 has 2 MA's), (141, 62809), (143, 62791),

Gene: Shynx_57 Start: 42680, Stop: 42982, Start Num: 93
Candidate Starts for Shynx_57:
(61, 42554), (76, 42629), (Start: 93 @42680 has 6 MA's), (117, 42728), (134, 42791), (159, 42923), (163, 42977),

Gene: SilentRX_55 Start: 41558, Stop: 41322, Start Num: 97
Candidate Starts for SilentRX_55:
(Start: 97 @41558 has 2 MA's), (124, 41507), (126, 41498), (135, 41459), (137, 41444),

Gene: Sisko_72 Start: 55626, Stop: 55426, Start Num: 116
Candidate Starts for Sisko_72:
(79, 55698), (95, 55662), (Start: 116 @55626 has 8 MA's),

Gene: Skylord_27 Start: 20825, Stop: 20634, Start Num: 121
Candidate Starts for Skylord_27:
(Start: 80 @20909 has 1 MA's), (90, 20885), (Start: 92 @20882 has 6 MA's), (103, 20861), (Start: 121 @20825 has 1 MA's), (124, 20813), (133, 20771),

Gene: Skysand_11 Start: 6344, Stop: 6598, Start Num: 88
Candidate Starts for Skysand_11:

(27, 5924), (38, 6107), (74, 6293), (81, 6323), (82, 6326), (Start: 88 @6344 has 8 MA's), (130, 6440), (133, 6458), (154, 6560), (157, 6587),

Gene: SlippinJimmy_92 Start: 64660, Stop: 64466, Start Num: 122

Candidate Starts for SlippinJimmy_92:

(87, 64723), (Start: 112 @64678 has 30 MA's), (Start: 122 @64660 has 23 MA's), (Start: 129 @64630 has 2 MA's), (141, 64573), (143, 64555),

Gene: Sonali_57 Start: 42711, Stop: 42905, Start Num: 122

Candidate Starts for Sonali_57:

(87, 42645), (Start: 122 @42711 has 23 MA's), (124, 42723), (140, 42798), (142, 42810),

Gene: Sour_71 Start: 56576, Stop: 56373, Start Num: 116

Candidate Starts for Sour_71:

(36, 56897), (37, 56873), (67, 56717), (79, 56651), (Start: 89 @56624 has 1 MA's), (95, 56615), (Start: 116 @56576 has 8 MA's), (Start: 122 @56564 has 23 MA's), (124, 56552), (133, 56510),

Gene: StarStruck_7 Start: 4521, Stop: 4760, Start Num: 96

Candidate Starts for StarStruck_7:

(60, 4383), (70, 4437), (Start: 96 @4521 has 7 MA's), (123, 4578), (150, 4689), (157, 4749),

Gene: Stoor_32 Start: 24148, Stop: 23957, Start Num: 122

Candidate Starts for Stoor_32:

(Start: 119 @24154 has 13 MA's), (Start: 122 @24148 has 23 MA's), (133, 24094),

Gene: Stromboli_32 Start: 24014, Stop: 23823, Start Num: 122

Candidate Starts for Stromboli_32:

(Start: 119 @24020 has 13 MA's), (Start: 122 @24014 has 23 MA's), (133, 23960),

Gene: Stuff_57 Start: 42753, Stop: 43055, Start Num: 93

Candidate Starts for Stuff_57:

(1, 41424), (2, 41664), (3, 41733), (4, 41811), (5, 41907), (6, 41916), (7, 42129), (8, 42153), (10, 42168), (12, 42183), (14, 42207), (17, 42255), (25, 42300), (28, 42369), (29, 42387), (61, 42627), (76, 42702), (Start: 93 @42753 has 6 MA's), (117, 42801), (134, 42864), (159, 42996), (163, 43050),

Gene: Sunshine23_58 Start: 42392, Stop: 42586, Start Num: 122

Candidate Starts for Sunshine23_58:

(87, 42326), (Start: 122 @42392 has 23 MA's), (124, 42404), (131, 42434), (140, 42479), (142, 42491),

Gene: SuperSulley_7 Start: 4607, Stop: 4846, Start Num: 96

Candidate Starts for SuperSulley_7:

(30, 4253), (59, 4472), (60, 4475), (70, 4529), (Start: 96 @4607 has 7 MA's), (Start: 101 @4613 has 1 MA's), (123, 4664), (150, 4775), (157, 4835),

Gene: SwainyDoc_89 Start: 63493, Stop: 63281, Start Num: 108

Candidate Starts for SwainyDoc_89:

(Start: 85 @63532 has 1 MA's), (Start: 108 @63493 has 8 MA's), (141, 63388), (143, 63370), (146, 63361), (156, 63307),

Gene: SynergyX_89 Start: 63305, Stop: 63093, Start Num: 112

Candidate Starts for SynergyX_89:

(87, 63350), (Start: 112 @63305 has 30 MA's), (Start: 122 @63287 has 23 MA's), (Start: 129 @63257 has 2 MA's), (141, 63200), (143, 63182),

Gene: TA17A_75 Start: 59238, Stop: 58993, Start Num: 102

Candidate Starts for TA17A_75:

(44, 59475), (48, 59451), (75, 59313), (Start: 102 @59238 has 6 MA's), (Start: 113 @59217 has 41 MA's), (130, 59163), (152, 59058), (154, 59043),

Gene: TP1604_67 Start: 52475, Stop: 52687, Start Num: 113

Candidate Starts for TP1604_67:

(75, 52382), (Start: 113 @52475 has 41 MA's), (141, 52577), (153, 52637), (161, 52682),

Gene: Tank_57 Start: 42579, Stop: 42322, Start Num: 94

Candidate Starts for Tank_57:

(Start: 94 @42579 has 9 MA's), (109, 42549), (128, 42501), (132, 42480),

Gene: Thonko_92 Start: 64640, Stop: 64431, Start Num: 106

Candidate Starts for Thonko_92:

(Start: 106 @64640 has 2 MA's), (153, 64478),

Gene: Tinciduntolum_73 Start: 59376, Stop: 59152, Start Num: 113

Candidate Starts for Tinciduntolum_73:

(44, 59634), (48, 59610), (75, 59472), (Start: 102 @59397 has 6 MA's), (Start: 113 @59376 has 41 MA's), (130, 59322), (152, 59217), (154, 59202),

Gene: TinyTerror_90 Start: 63728, Stop: 63516, Start Num: 112

Candidate Starts for TinyTerror_90:

(Start: 85 @63782 has 1 MA's), (87, 63773), (Start: 112 @63728 has 30 MA's), (Start: 122 @63710 has 23 MA's), (Start: 129 @63680 has 2 MA's), (141, 63623), (143, 63605),

Gene: TraderJ_74 Start: 56029, Stop: 55799, Start Num: 100

Candidate Starts for TraderJ_74:

(19, 56539), (20, 56527), (45, 56251), (47, 56242), (55, 56200), (63, 56164), (72, 56107), (73, 56104), (Start: 100 @56029 has 2 MA's), (Start: 106 @56017 has 2 MA's), (158, 55810),

Gene: Tres_72 Start: 59230, Stop: 59006, Start Num: 113

Candidate Starts for Tres_72:

(44, 59488), (48, 59464), (75, 59326), (Start: 102 @59251 has 6 MA's), (Start: 113 @59230 has 41 MA's), (152, 59071), (154, 59056),

Gene: Turuncu_9 Start: 4891, Stop: 5145, Start Num: 88

Candidate Starts for Turuncu_9:

(Start: 88 @4891 has 8 MA's), (Start: 91 @4894 has 4 MA's), (107, 4927), (127, 4975), (154, 5107), (157, 5134),

Gene: Tydolla_85 Start: 63266, Stop: 63072, Start Num: 122

Candidate Starts for Tydolla_85:

(87, 63329), (Start: 112 @63284 has 30 MA's), (Start: 122 @63266 has 23 MA's), (Start: 129 @63236 has 2 MA's), (141, 63179), (143, 63161),

Gene: UNTPL_59 Start: 42784, Stop: 43086, Start Num: 93

Candidate Starts for UNTPL_59:

(1, 41455), (2, 41695), (3, 41764), (4, 41842), (5, 41938), (6, 41947), (7, 42160), (8, 42184), (10, 42199), (12, 42214), (16, 42271), (28, 42400), (29, 42418), (61, 42658), (76, 42733), (Start: 93 @42784 has 6 MA's), (117, 42832), (134, 42895), (159, 43027), (163, 43081),

Gene: Vic9_00072 Start: 60094, Stop: 59849, Start Num: 102

Candidate Starts for Vic9_00072:

(44, 60331), (48, 60307), (75, 60169), (Start: 102 @60094 has 6 MA's), (Start: 113 @60073 has 41 MA's), (130, 60019), (152, 59914), (154, 59899),

Gene: Vitas_27 Start: 20918, Stop: 20643, Start Num: 80

Candidate Starts for Vitas_27:

(Start: 80 @20918 has 1 MA's), (90, 20894), (Start: 92 @20891 has 6 MA's), (103, 20870), (Start: 121 @20834 has 1 MA's), (124, 20822), (133, 20780),

Gene: WalkingDead_32 Start: 24254, Stop: 24063, Start Num: 122

Candidate Starts for WalkingDead_32:

(Start: 119 @24260 has 13 MA's), (Start: 122 @24254 has 23 MA's), (133, 24200),

Gene: West99_72 Start: 59407, Stop: 59183, Start Num: 113

Candidate Starts for West99_72:

(44, 59665), (48, 59641), (75, 59503), (Start: 102 @59428 has 6 MA's), (Start: 113 @59407 has 41 MA's), (152, 59248), (154, 59233),

Gene: Wheezy_9 Start: 5755, Stop: 6006, Start Num: 91

Candidate Starts for Wheezy_9:

(59, 5635), (60, 5638), (Start: 91 @5755 has 4 MA's), (115, 5803), (144, 5917), (150, 5932), (157, 5992),

Gene: Wilde_59 Start: 42878, Stop: 42621, Start Num: 94

Candidate Starts for Wilde_59:

(Start: 94 @42878 has 9 MA's), (109, 42848), (128, 42800), (132, 42779),

Gene: Wooper_75 Start: 55974, Stop: 55744, Start Num: 100

Candidate Starts for Wooper_75:

(19, 56484), (20, 56472), (45, 56196), (47, 56187), (50, 56172), (55, 56145), (63, 56109), (72, 56052), (73, 56049), (Start: 100 @55974 has 2 MA's), (Start: 106 @55962 has 2 MA's), (158, 55755),

Gene: Xkcd426_72 Start: 59054, Stop: 59275, Start Num: 113

Candidate Starts for Xkcd426_72:

(Start: 113 @59054 has 41 MA's), (114, 59057), (141, 59153), (149, 59183),

Gene: YDN12_68 Start: 52246, Stop: 52458, Start Num: 113

Candidate Starts for YDN12_68:

(75, 52153), (Start: 113 @52246 has 41 MA's), (124, 52270), (141, 52348), (153, 52408), (161, 52453),

Gene: Yahalom_87 Start: 63111, Stop: 62899, Start Num: 112

Candidate Starts for Yahalom_87:

(87, 63156), (Start: 112 @63111 has 30 MA's), (Start: 122 @63093 has 23 MA's), (Start: 129 @63063 has 2 MA's), (141, 63006), (143, 62988),

Gene: Yeshua_74 Start: 55939, Stop: 55721, Start Num: 106

Candidate Starts for Yeshua_74:

(19, 56464), (20, 56452), (45, 56176), (47, 56167), (50, 56152), (55, 56125), (63, 56089), (72, 56032), (73, 56029), (84, 55987), (Start: 100 @55951 has 2 MA's), (Start: 106 @55939 has 2 MA's), (158, 55732),

Gene: Yinz_87 Start: 62651, Stop: 62439, Start Num: 108

Candidate Starts for Yinz_87:

(Start: 85 @62690 has 1 MA's), (Start: 108 @62651 has 8 MA's), (141, 62546), (143, 62528), (146, 62519), (156, 62465),