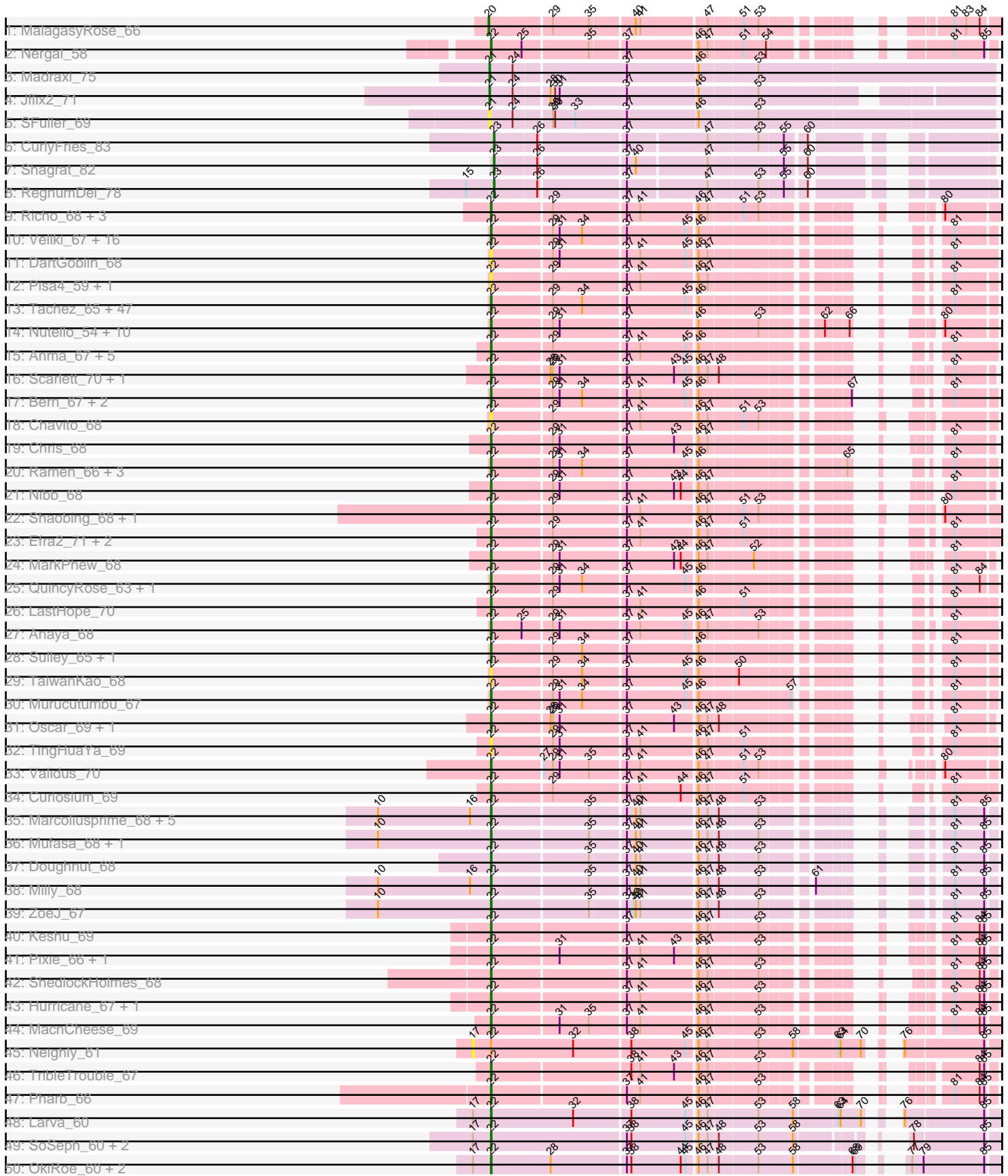
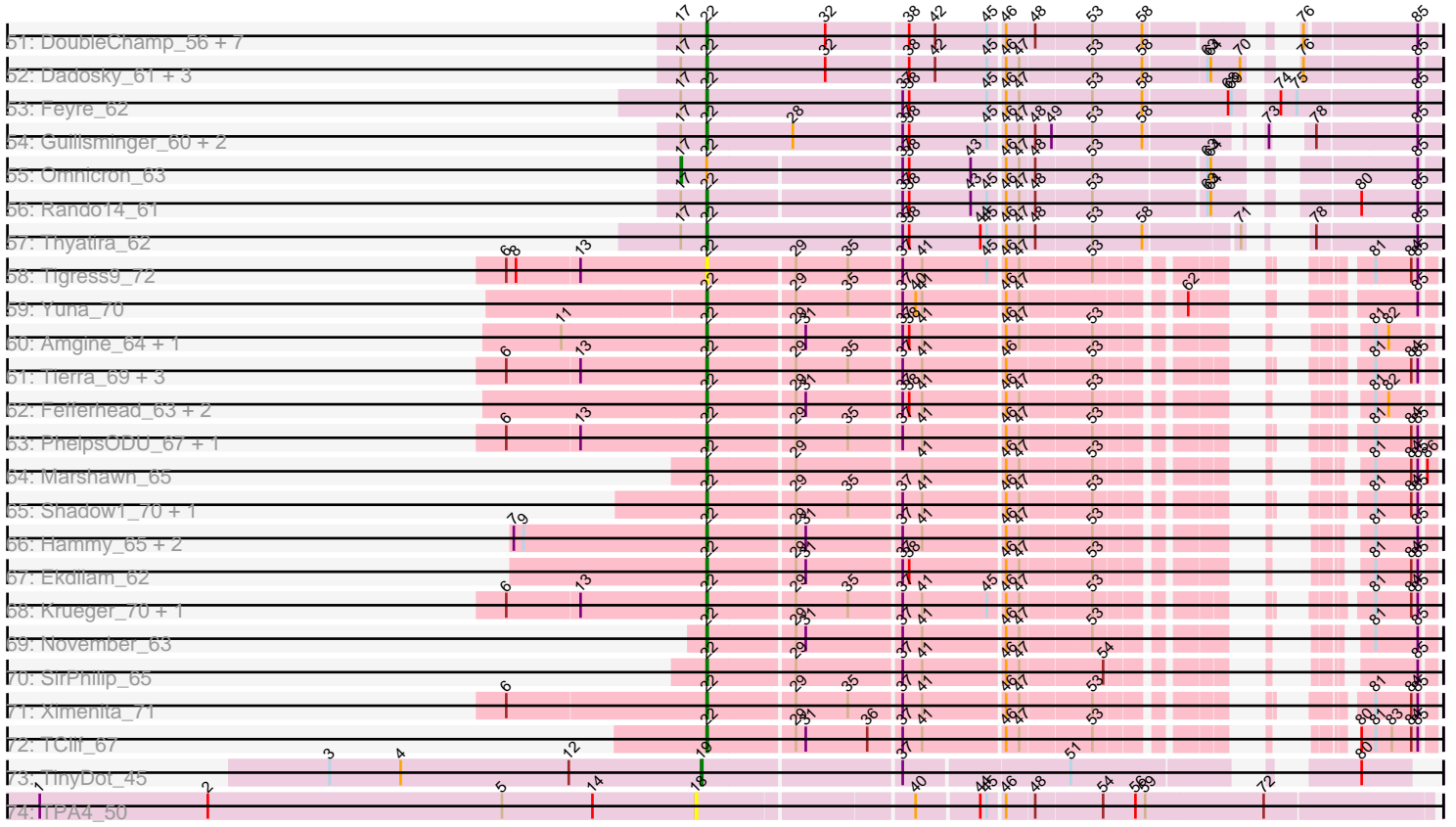


Pham 294438



Pham 294438



Note: Tracks are now grouped by subcluster and scaled. Switching in subcluster is indicated by changes in track color. Track scale is now set by default to display the region 30 bp upstream of start 1 to 30 bp downstream of the last possible start. If this default region is judged to be packed too tightly with annotated starts, the track will be further scaled to only show that region of the ORF with annotated starts. This action will be indicated by adding "Zoomed" to the title. For starts, yellow indicates the location of called starts comprised solely of Glimmer/GeneMark auto-annotations, green indicates the location of called starts with at least 1 manual gene annotation.

Pham 294438 Report

This analysis was run 04/18/26 on database version 643.

Pham number 294438 has 203 members, 20 are drafts.

Phages represented in each track:

- Track 1 : MalagasyRose_66
- Track 2 : Nergal_58
- Track 3 : Madraxi_75
- Track 4 : Jflix2_71
- Track 5 : SFuller_69
- Track 6 : CurlyFries_83
- Track 7 : Shagrat_82
- Track 8 : RegnumDei_78
- Track 9 : Richo_68, McMater_68, Niklas_68, Dartin_68
- Track 10 : Veliki_67, LaterM_66, Stinson_67, JAWS_66, Ageofdapage_69, Devera_73, TruffulaTree_66, BarrelRoll_66, Rapunzel97_67, Apocalypse_68, Dole_71, Slimphazie_66, Deby_66, Zavala_68, Illumine_71, Mynx_67, MeaningOfLife_66
- Track 11 : DartGoblin_68
- Track 12 : Pisa4_59, Pisa1_65
- Track 13 : Tachez_65, BGIluviae_65, Inky_65, Durfee_65, Padpat_68, Twitch_65, CREW_65, Emerson_67, Blizzard_65, LindNT_65, Atiba_66, CaseJules_67, Adephagia_65, Llorens_65, Hyperbowlee_65, Asayake_65, Homura_65, Pokerus_65, Clipper_69, Spock_65, Rosmarinus_65, Megsy_68, Lunahalos_65, YoureAdopted_65, Boiiii_65, Piatt_65, Joy99_65, CrimD_67, Tiri_66, Peel_65, Belladonna_65, Adonis_65, Beezoo_67, Padfoot_65, Topper_65, Jayhawk_67, Dalmuri_65, ShiaSurprise_66, Capricorn_65, CallaLilly_65, TreyKay_67, Jarvi_65, Jeckyll_65, MacKat_61, Prithvi_67, AlishaPH_65, Geraldini_68, BEEST_65
- Track 14 : Nutello_54, Teejan_56, SgtBeansprout_55, Torres_57, Binglebops_54, LilPharaoh_55, Nikao_57, Mdavu_55, Enkosi_56, Amelie_54, Trice_54
- Track 15 : Anma_67, TiniBug_66, Urkel_66, DrHayes_66, Bella96_66, SamuelLPlaqson_66
- Track 16 : Scarlett_70, KiSi_70
- Track 17 : Bern_67, BaghaKamala_65, CheetoDust_65
- Track 18 : Chavito_68
- Track 19 : Chris_68
- Track 20 : Ramen_66, Zabiza_60, ActinUp_65, HedwigODU_65
- Track 21 : Nibb_68
- Track 22 : Shaobing_68, Peanam_68
- Track 23 : Efra2_71, Yunkel11_70, Guanica15_70
- Track 24 : MarkPhew_68
- Track 25 : QuincyRose_63, Ganymede_65

- Track 26 : LastHope_70
- Track 27 : Anaya_68
- Track 28 : Sulley_65, Angelica_65
- Track 29 : TaiwanKao_68
- Track 30 : Murucutumbu_67
- Track 31 : Oscar_69, LeMond_69
- Track 32 : TingHuaYa_69
- Track 33 : Validus_70
- Track 34 : Curiosium_69
- Track 35 : Marcoliusprime_68, DismalFunk_68, TM4_66, Findley_68, DismalStressor_68, Strobilo_69
- Track 36 : Mufasa_68, BoostSeason_68
- Track 37 : Doughnut_68
- Track 38 : Milly_68
- Track 39 : ZoeJ_67
- Track 40 : Keshu_69
- Track 41 : Pixie_66, TBond007_63
- Track 42 : ShedlockHolmes_68
- Track 43 : Hurricane_67, Lea83_67
- Track 44 : MacnCheese_69
- Track 45 : Neighly_61
- Track 46 : TribbleTrouble_67
- Track 47 : Pharb_66
- Track 48 : Larva_60
- Track 49 : SoSeph_60, Heftyboy_60, Waterfoul_61
- Track 50 : OkiRoe_60, Miryou_63, Gengar_59
- Track 51 : DoubleChamp_56, Agent47_59, BananenDer11_56, Collard_57, LilDirt_56, Kratio_57, InvictusManeo_57, ViviJ_58
- Track 52 : Dadosky_61, Edugator_58, AlleyCat_61, Psycho_59
- Track 53 : Feyre_62
- Track 54 : Guillsminger_60, Paola_59, Leston_59
- Track 55 : Omnicron_63
- Track 56 : Rando14_61
- Track 57 : Thyatira_62
- Track 58 : Tigress9_72
- Track 59 : Yuna_70
- Track 60 : Amgine_64, Lavahound_64
- Track 61 : Tierra_69, Cain_69, Phrank_69, Bryler_69
- Track 62 : Fefferhead_63, Applecrisp_62, Ellie_61
- Track 63 : PhelpsODU_67, Unicorn_67
- Track 64 : Marshawn_65
- Track 65 : Shadow1_70, Sunflower1121_71
- Track 66 : Hammy_65, Amohnition_65, DarthP_65
- Track 67 : Ekdilam_62
- Track 68 : Krueger_70, Syra333_69
- Track 69 : November_63
- Track 70 : SirPhilip_65
- Track 71 : Ximenita_71
- Track 72 : TClif_67
- Track 73 : TinyDot_45
- Track 74 : TPA4_50

Summary of Final Annotations (See graph section above for start numbers):

The start number called the most often in the published annotations is 22, it was called in 175 of the 183 non-draft genes in the pham.

Genes that call this "Most Annotated" start:

- ActinUp_65, Adephegia_65, Adonis_65, Agent47_59, Ageofdapage_69, AlishaPH_65, AlleyCat_61, Amelie_54, Amgine_64, Amohnition_65, Anaya_68, Angelica_65, Anma_67, Apocalypse_68, Applecrisp_62, Asayake_65, Atiba_66, BEEST_65, BGIlluviae_65, BaghaKamala_65, BananenDer11_56, BarrelRoll_66, Beezoo_67, Bella96_66, Belladonna_65, Bern_67, Binglebops_54, Blizzard_65, Boiiii_65, BoostSeason_68, Bryler_69, CREW_65, Cain_69, CallaLilly_65, Capricorn_65, CaseJules_67, Chavito_68, CheetoDust_65, Chris_68, Clipper_69, Collard_57, CrimD_67, Curiosium_69, Dadosky_61, Dalmuri_65, DartGoblin_68, DarthP_65, Dartin_68, Deby_66, Devera_73, DismalFunk_68, DismalStressor_68, Dole_71, DoubleChamp_56, Doughnut_68, DrHayes_66, Durfee_65, Edugator_58, Efra2_71, Ekdilam_62, Ellie_61, Emerson_67, Enkosi_56, Fefferhead_63, Feyre_62, Findley_68, Ganymede_65, Gengar_59, Geraldini_68, Guanica15_70, Guillsminger_60, Hammy_65, HedwigODU_65, Heftyboy_60, Homura_65, Hurricane_67, Hyperbowlee_65, Illumine_71, Inky_65, InvictusManeo_57, JAWS_66, Jarvi_65, Jayhawk_67, Jeckyll_65, Joy99_65, Keshu_69, KiSi_70, Kratio_57, Krueger_70, Larva_60, LastHope_70, LaterM_66, Lavahound_64, LeMond_69, Lea83_67, Leston_59, LilDirt_56, LilPharaoh_55, LindNT_65, Llorens_65, Lunahalos_65, MacKat_61, MacnCheese_69, Marcoliusprime_68, MarkPhew_68, Marshawn_65, McMater_68, Mdavu_55, MeaningOfLife_66, Megsy_68, Milly_68, Miryou_63, Mufasa_68, Murucutumbu_67, Mynx_67, Nergal_58, Nibb_68, Nikao_57, Niklas_68, November_63, Nutello_54, OkiRoe_60, Oscar_69, Padfoot_65, Padpat_68, Paola_59, Peanam_68, Peel_65, Pharb_66, PhelpsODU_67, Phrank_69, Piatt_65, Pisa1_65, Pisa4_59, Pixie_66, Pokerus_65, Prithvi_67, Psycho_59, QuincyRose_63, Ramen_66, Rando14_61, Rapunzel97_67, Richo_68, Rosmarinus_65, SamuelLPlaqson_66, Scarlett_70, SgtBeansprout_55, Shadow1_70, Shaobing_68, ShedlockHolmes_68, ShiaSurprise_66, SirPhilip_65, Slimphazie_66, SoSeph_60, Spock_65, Stinson_67, Strobilo_69, Sulley_65, Sunflower1121_71, Syra333_69, TBond007_63, TClif_67, TM4_66, Tachez_65, TaiwanKao_68, Teejan_56, Thyatira_62, Tierra_69, Tigress9_72, TingHuaYa_69, TiniBug_66, Tiri_66, Topper_65, Torres_57, TreyKay_67, TripleTrouble_67, Trice_54, TruffulaTree_66, Twitch_65, Unicorn_67, Urkel_66, Validus_70, Veliki_67, ViviJ_58, Waterfoul_61, Ximenita_71, YoureAdopted_65, Yuna_70, Yunkel11_70, Zabiza_60, Zavala_68, ZoeJ_67,

Genes that have the "Most Annotated" start but do not call it:

- Neighly_61, Omnicron_63,

Genes that do not have the "Most Annotated" start:

- CurlyFries_83, Jflix2_71, Madraxi_75, MalagasyRose_66, RegnumDei_78, SFuller_69, Shagrat_82, TPA4_50, TinyDot_45,

Summary by start number:

Start 17:

- Found in 27 of 203 (13.3%) of genes in pham
- Manual Annotations of this start: 1 of 183

- Called 7.4% of time when present
- Phage (with cluster) where this start called: Neighly_61 (K3), Omnicron_63 (K5),

Start 18:

- Found in 1 of 203 (0.5%) of genes in pham
- No Manual Annotations of this start.
- Called 100.0% of time when present
- Phage (with cluster) where this start called: TPA4_50 (singleton),

Start 19:

- Found in 1 of 203 (0.5%) of genes in pham
- Manual Annotations of this start: 1 of 183
- Called 100.0% of time when present
- Phage (with cluster) where this start called: TinyDot_45 (singleton),

Start 20:

- Found in 1 of 203 (0.5%) of genes in pham
- Manual Annotations of this start: 1 of 183
- Called 100.0% of time when present
- Phage (with cluster) where this start called: MalagasyRose_66 (AG),

Start 21:

- Found in 3 of 203 (1.5%) of genes in pham
- Manual Annotations of this start: 2 of 183
- Called 100.0% of time when present
- Phage (with cluster) where this start called: Jflix2_71 (CF), Madraxi_75 (CF), SFuller_69 (CF),

Start 22:

- Found in 194 of 203 (95.6%) of genes in pham
- Manual Annotations of this start: 175 of 183
- Called 99.0% of time when present
- Phage (with cluster) where this start called: ActinUp_65 (K1), Adephagia_65 (K1), Adonis_65 (K1), Agent47_59 (K5), Ageofdapage_69 (K1), AlishaPH_65 (K1), AlleyCat_61 (K5), Amelie_54 (K1), Amgine_64 (K6), Amohnition_65 (K6), Anaya_68 (K1), Angelica_65 (K1), Anma_67 (K1), Apocalypse_68 (K1), Applecrisp_62 (K6), Asayake_65 (K1), Atiba_66 (K1), BEEST_65 (K1), BGIlluviae_65 (K1), BaghaKamala_65 (K1), BananenDer11_56 (K5), BarrelRoll_66 (K1), Beezoo_67 (K1), Bella96_66 (K1), Belladonna_65 (K1), Bern_67 (K1), Binglebops_54 (K1), Blizzard_65 (K1), Boiiii_65 (K1), BoostSeason_68 (K2), Bryler_69 (K6), CREW_65 (K1), Cain_69 (K6), CallaLilly_65 (K1), Capricorn_65 (K1), CaseJules_67 (K1), Chavito_68 (K1), CheetoDust_65 (K1), Chris_68 (K1), Clipper_69 (K1), Collard_57 (K5), CrimD_67 (K1), Curiosium_69 (K1), Dadosky_61 (K5), Dalmuri_65 (K1), DartGoblin_68 (K1), DarthP_65 (K6), Dartin_68 (K1), Deby_66 (K1), Devera_73 (K1), DismalFunk_68 (K2), DismalStressor_68 (K2), Dole_71 (K1), DoubleChamp_56 (K5), Doughnut_68 (K2), DrHayes_66 (K1), Durfee_65 (K1), Edugator_58 (K5), Efra2_71 (K1), Ekdilam_62 (K6), Ellie_61 (K6), Emerson_67 (K1), Enkosi_56 (K1), Fefferhead_63 (K6), Feyre_62 (K5), Findley_68 (K2), Ganymede_65 (K1), Gengar_59 (K5), Geraldini_68 (K1), Guanica15_70 (K1), Guillsminger_60 (K5), Hammy_65 (K6), HedwigODU_65 (K1), Heftyboy_60 (K5), Homura_65 (K1), Hurricane_67 (K3), Hyperbowlee_65 (K1), Illumine_71 (K1), Inky_65 (K1), InvictusManeo_57 (K5), JAWS_66 (K1), Jarvi_65 (K1), Jayhawk_67 (K1), Jeckyll_65 (K1), Joy99_65 (K1), Keshu_69 (K3), KiSi_70 (K1), Kratio_57 (K5), Krueger_70 (K6), Larva_60 (K5),

LastHope_70 (K1), LaterM_66 (K1), Lavahound_64 (K6), LeMond_69 (K1), Lea83_67 (K3), Leston_59 (K5), LilDirt_56 (K5), LilPharaoh_55 (K1), LindNT_65 (K1), Llorens_65 (K1), Lunahalos_65 (K1), MacKat_61 (K1), MacnCheese_69 (K3), Marcoliusprime_68 (K2), MarkPhew_68 (K1), Marshawn_65 (K6), McMater_68 (K1), Mdavu_55 (K1), MeaningOfLife_66 (K1), Megsy_68 (K1), Milly_68 (K2), Miryou_63 (K5), Mufasa_68 (K2), Murucutumbu_67 (K1), Mynx_67 (K1), Nergal_58 (AG), Nibb_68 (K1), Nikao_57 (K1), Niklas_68 (K1), November_63 (K6), Nutello_54 (K1), OkiRoe_60 (K5), Oscar_69 (K1), Padfoot_65 (K1), Padpat_68 (K1), Paola_59 (K5), Peanam_68 (K1), Peel_65 (K1), Pharb_66 (K3), PhelpsODU_67 (K6), Phrank_69 (K6), Piatt_65 (K1), Pisa1_65 (K1), Pisa4_59 (K1), Pixie_66 (K3), Pokerus_65 (K1), Prithvi_67 (K1), Psycho_59 (K5), QuincyRose_63 (K1), Ramen_66 (K1), Rando14_61 (K5), Rapunzel97_67 (K1), Richo_68 (K1), Rosmarinus_65 (K1), SamuelLPlaqson_66 (K1), Scarlett_70 (K1), SgtBeansprout_55 (K1), Shadow1_70 (K6), Shaobing_68 (K1), ShedlockHolmes_68 (K3), ShiaSurprise_66 (K1), SirPhilip_65 (K6), Slimphazie_66 (K1), SoSeph_60 (K5), Spock_65 (K1), Stinson_67 (K1), Strobilo_69 (K2), Sulley_65 (K1), Sunflower1121_71 (K6), Syra333_69 (K6), TBond007_63 (K3), TClif_67 (K6), TM4_66 (K2), Tachez_65 (K1), TaiwanKao_68 (K1), Teejan_56 (K1), Thyatira_62 (K5), Tierra_69 (K6), Tigress9_72 (K6), TingHuaYa_69 (K1), TiniBug_66 (K1), Tiri_66 (K1), Topper_65 (K1), Torres_57 (K1), TreyKay_67 (K1), TribbleTrouble_67 (K3), Trice_54 (K1), TruffulaTree_66 (K1), Twitch_65 (K1), Unicorn_67 (K6), Urkel_66 (K1), Validus_70 (K1), Veliki_67 (K1), ViviJ_58 (K5), Waterfoul_61 (K5), Ximenita_71 (K6), YoureAdopted_65 (K1), Yuna_70 (K6), Yunkel11_70 (K1), Zabiza_60 (K1), Zavala_68 (K1), ZoeJ_67 (K2),

Start 23:

- Found in 3 of 203 (1.5%) of genes in pham
- Manual Annotations of this start: 3 of 183
- Called 100.0% of time when present
- Phage (with cluster) where this start called: CurlyFries_83 (CF), RegnumDei_78 (CF), Shagrat_82 (CF),

Summary by clusters:

There are 8 clusters represented in this pham: singleton, AG, CF, K3, K2, K1, K6, K5,

Info for manual annotations of cluster AG:

- Start number 20 was manually annotated 1 time for cluster AG.
- Start number 22 was manually annotated 1 time for cluster AG.

Info for manual annotations of cluster CF:

- Start number 21 was manually annotated 2 times for cluster CF.
- Start number 23 was manually annotated 3 times for cluster CF.

Info for manual annotations of cluster K1:

- Start number 22 was manually annotated 108 times for cluster K1.

Info for manual annotations of cluster K2:

- Start number 22 was manually annotated 11 times for cluster K2.

Info for manual annotations of cluster K3:

- Start number 22 was manually annotated 9 times for cluster K3.

Info for manual annotations of cluster K5:

- Start number 17 was manually annotated 1 time for cluster K5.
- Start number 22 was manually annotated 22 times for cluster K5.

Info for manual annotations of cluster K6:

- Start number 22 was manually annotated 24 times for cluster K6.

Gene Information:

Gene: ActinUp_65 Start: 42856, Stop: 43365, Start Num: 22

Candidate Starts for ActinUp_65:

(Start: 22 @42856 has 175 MA's), (29, 42931), (31, 42940), (34, 42970), (37, 43024), (45, 43102), (46, 43114), (65, 43273), (81, 43315),

Gene: Adephagia_65 Start: 42893, Stop: 43402, Start Num: 22

Candidate Starts for Adephagia_65:

(Start: 22 @42893 has 175 MA's), (29, 42968), (34, 43007), (37, 43061), (45, 43139), (46, 43151), (81, 43352),

Gene: Adonis_65 Start: 43128, Stop: 43637, Start Num: 22

Candidate Starts for Adonis_65:

(Start: 22 @43128 has 175 MA's), (29, 43203), (34, 43242), (37, 43296), (45, 43374), (46, 43386), (81, 43587),

Gene: Agent47_59 Start: 40081, Stop: 40656, Start Num: 22

Candidate Starts for Agent47_59:

(Start: 17 @40057 has 1 MA's), (Start: 22 @40081 has 175 MA's), (32, 40189), (38, 40261), (42, 40285), (45, 40333), (46, 40345), (48, 40369), (53, 40417), (58, 40462), (76, 40552), (85, 40645),

Gene: Ageofdapage_69 Start: 44287, Stop: 44796, Start Num: 22

Candidate Starts for Ageofdapage_69:

(Start: 22 @44287 has 175 MA's), (29, 44362), (31, 44371), (34, 44401), (37, 44455), (45, 44533), (46, 44545), (81, 44746),

Gene: AlishaPH_65 Start: 43154, Stop: 43663, Start Num: 22

Candidate Starts for AlishaPH_65:

(Start: 22 @43154 has 175 MA's), (29, 43229), (34, 43268), (37, 43322), (45, 43400), (46, 43412), (81, 43613),

Gene: AlleyCat_61 Start: 40379, Stop: 40972, Start Num: 22

Candidate Starts for AlleyCat_61:

(Start: 17 @40355 has 1 MA's), (Start: 22 @40379 has 175 MA's), (32, 40487), (38, 40559), (42, 40583), (45, 40631), (46, 40643), (47, 40655), (53, 40715), (58, 40760), (63, 40814), (64, 40817), (70, 40844), (76, 40859), (85, 40958),

Gene: Amelie_54 Start: 40324, Stop: 40845, Start Num: 22

Candidate Starts for Amelie_54:

(Start: 22 @40324 has 175 MA's), (29, 40399), (31, 40408), (37, 40492), (46, 40582), (53, 40654), (62, 40717), (66, 40744), (80, 40783),

Gene: Amgine_64 Start: 43961, Stop: 44473, Start Num: 22

Candidate Starts for Amgine_64:

(11, 43832), (Start: 22 @43961 has 175 MA's), (29, 44036), (31, 44045), (37, 44129), (38, 44135), (41, 44147), (46, 44219), (47, 44231), (53, 44291), (81, 44426), (82, 44438),

Gene: Amohnition_65 Start: 43500, Stop: 44012, Start Num: 22

Candidate Starts for Amohnition_65:

(7, 43323), (9, 43332), (Start: 22 @43500 has 175 MA's), (29, 43575), (31, 43584), (37, 43668), (41, 43686), (46, 43758), (47, 43770), (53, 43830), (81, 43962), (85, 44001),

Gene: Anaya_68 Start: 43839, Stop: 44357, Start Num: 22

Candidate Starts for Anaya_68:

(Start: 22 @43839 has 175 MA's), (25, 43878), (29, 43914), (31, 43923), (37, 44007), (41, 44025), (45, 44085), (46, 44097), (47, 44109), (53, 44169), (81, 44301),

Gene: Angelica_65 Start: 43046, Stop: 43555, Start Num: 22

Candidate Starts for Angelica_65:

(Start: 22 @43046 has 175 MA's), (29, 43121), (34, 43160), (37, 43214), (46, 43304), (81, 43505),

Gene: Anma_67 Start: 43745, Stop: 44260, Start Num: 22

Candidate Starts for Anma_67:

(Start: 22 @43745 has 175 MA's), (29, 43820), (37, 43913), (41, 43931), (45, 43991), (46, 44003), (81, 44204),

Gene: Apocalypse_68 Start: 43810, Stop: 44319, Start Num: 22

Candidate Starts for Apocalypse_68:

(Start: 22 @43810 has 175 MA's), (29, 43885), (31, 43894), (34, 43924), (37, 43978), (45, 44056), (46, 44068), (81, 44269),

Gene: Applecrisp_62 Start: 43091, Stop: 43603, Start Num: 22

Candidate Starts for Applecrisp_62:

(Start: 22 @43091 has 175 MA's), (29, 43166), (31, 43175), (37, 43259), (38, 43265), (41, 43277), (46, 43349), (47, 43361), (53, 43421), (81, 43556), (82, 43568),

Gene: Asayake_65 Start: 43208, Stop: 43717, Start Num: 22

Candidate Starts for Asayake_65:

(Start: 22 @43208 has 175 MA's), (29, 43283), (34, 43322), (37, 43376), (45, 43454), (46, 43466), (81, 43667),

Gene: Atiba_66 Start: 42856, Stop: 43365, Start Num: 22

Candidate Starts for Atiba_66:

(Start: 22 @42856 has 175 MA's), (29, 42931), (34, 42970), (37, 43024), (45, 43102), (46, 43114), (81, 43315),

Gene: BEEST_65 Start: 43208, Stop: 43717, Start Num: 22

Candidate Starts for BEEST_65:

(Start: 22 @43208 has 175 MA's), (29, 43283), (34, 43322), (37, 43376), (45, 43454), (46, 43466), (81, 43667),

Gene: BGlluviae_65 Start: 43011, Stop: 43520, Start Num: 22

Candidate Starts for BGlluviae_65:

(Start: 22 @43011 has 175 MA's), (29, 43086), (34, 43125), (37, 43179), (45, 43257), (46, 43269), (81, 43470),

Gene: BaghaKamala_65 Start: 42675, Stop: 43184, Start Num: 22

Candidate Starts for BaghaKamala_65:

(Start: 22 @42675 has 175 MA's), (29, 42750), (31, 42759), (34, 42789), (37, 42843), (41, 42861), (45, 42921), (46, 42933), (67, 43098), (81, 43134),

Gene: BananenDer11_56 Start: 40042, Stop: 40617, Start Num: 22

Candidate Starts for BananenDer11_56:

(Start: 17 @40018 has 1 MA's), (Start: 22 @40042 has 175 MA's), (32, 40150), (38, 40222), (42, 40246), (45, 40294), (46, 40306), (48, 40330), (53, 40378), (58, 40423), (76, 40513), (85, 40606),

Gene: BarrelRoll_66 Start: 43294, Stop: 43803, Start Num: 22

Candidate Starts for BarrelRoll_66:

(Start: 22 @43294 has 175 MA's), (29, 43369), (31, 43378), (34, 43408), (37, 43462), (45, 43540), (46, 43552), (81, 43753),

Gene: Beezoo_67 Start: 43806, Stop: 44315, Start Num: 22

Candidate Starts for Beezoo_67:

(Start: 22 @43806 has 175 MA's), (29, 43881), (34, 43920), (37, 43974), (45, 44052), (46, 44064), (81, 44265),

Gene: Bella96_66 Start: 43591, Stop: 44106, Start Num: 22

Candidate Starts for Bella96_66:

(Start: 22 @43591 has 175 MA's), (29, 43666), (37, 43759), (41, 43777), (45, 43837), (46, 43849), (81, 44050),

Gene: Belladonna_65 Start: 43011, Stop: 43520, Start Num: 22

Candidate Starts for Belladonna_65:

(Start: 22 @43011 has 175 MA's), (29, 43086), (34, 43125), (37, 43179), (45, 43257), (46, 43269), (81, 43470),

Gene: Bern_67 Start: 42268, Stop: 42777, Start Num: 22

Candidate Starts for Bern_67:

(Start: 22 @42268 has 175 MA's), (29, 42343), (31, 42352), (34, 42382), (37, 42436), (41, 42454), (45, 42514), (46, 42526), (67, 42691), (81, 42727),

Gene: Biglebops_54 Start: 40324, Stop: 40845, Start Num: 22

Candidate Starts for Biglebops_54:

(Start: 22 @40324 has 175 MA's), (29, 40399), (31, 40408), (37, 40492), (46, 40582), (53, 40654), (62, 40717), (66, 40744), (80, 40783),

Gene: Blizzard_65 Start: 43208, Stop: 43717, Start Num: 22

Candidate Starts for Blizzard_65:

(Start: 22 @43208 has 175 MA's), (29, 43283), (34, 43322), (37, 43376), (45, 43454), (46, 43466), (81, 43667),

Gene: Boiiii_65 Start: 43210, Stop: 43719, Start Num: 22

Candidate Starts for Boiiii_65:

(Start: 22 @43210 has 175 MA's), (29, 43285), (34, 43324), (37, 43378), (45, 43456), (46, 43468), (81, 43669),

Gene: BoostSeason_68 Start: 45062, Stop: 45580, Start Num: 22

Candidate Starts for BoostSeason_68:

(10, 44912), (Start: 22 @45062 has 175 MA's), (35, 45185), (37, 45227), (40, 45239), (41, 45245), (46, 45317), (47, 45329), (48, 45341), (53, 45389), (81, 45530), (85, 45569),

Gene: Bryler_69 Start: 42843, Stop: 43361, Start Num: 22

Candidate Starts for Bryler_69:

(6, 42663), (13, 42729), (Start: 22 @42843 has 175 MA's), (29, 42918), (35, 42966), (37, 43011), (41, 43029), (46, 43101), (53, 43173), (81, 43311), (84, 43344), (85, 43350),

Gene: CREW_65 Start: 43011, Stop: 43520, Start Num: 22

Candidate Starts for CREW_65:

(Start: 22 @43011 has 175 MA's), (29, 43086), (34, 43125), (37, 43179), (45, 43257), (46, 43269), (81, 43470),

Gene: Cain_69 Start: 42831, Stop: 43349, Start Num: 22

Candidate Starts for Cain_69:

(6, 42651), (13, 42717), (Start: 22 @42831 has 175 MA's), (29, 42906), (35, 42954), (37, 42999), (41, 43017), (46, 43089), (53, 43161), (81, 43299), (84, 43332), (85, 43338),

Gene: CallaLilly_65 Start: 42934, Stop: 43443, Start Num: 22

Candidate Starts for CallaLilly_65:

(Start: 22 @42934 has 175 MA's), (29, 43009), (34, 43048), (37, 43102), (45, 43180), (46, 43192), (81, 43393),

Gene: Capricorn_65 Start: 43011, Stop: 43520, Start Num: 22

Candidate Starts for Capricorn_65:

(Start: 22 @43011 has 175 MA's), (29, 43086), (34, 43125), (37, 43179), (45, 43257), (46, 43269), (81, 43470),

Gene: CaseJules_67 Start: 43208, Stop: 43717, Start Num: 22

Candidate Starts for CaseJules_67:

(Start: 22 @43208 has 175 MA's), (29, 43283), (34, 43322), (37, 43376), (45, 43454), (46, 43466), (81, 43667),

Gene: Chavito_68 Start: 44040, Stop: 44564, Start Num: 22

Candidate Starts for Chavito_68:

(Start: 22 @44040 has 175 MA's), (29, 44115), (37, 44208), (41, 44226), (46, 44298), (47, 44310), (51, 44352), (53, 44370),

Gene: CheetoDust_65 Start: 42722, Stop: 43231, Start Num: 22

Candidate Starts for CheetoDust_65:

(Start: 22 @42722 has 175 MA's), (29, 42797), (31, 42806), (34, 42836), (37, 42890), (41, 42908), (45, 42968), (46, 42980), (67, 43145), (81, 43181),

Gene: Chris_68 Start: 44067, Stop: 44573, Start Num: 22

Candidate Starts for Chris_68:

(Start: 22 @44067 has 175 MA's), (29, 44142), (31, 44151), (37, 44235), (43, 44298), (46, 44325), (47, 44337), (81, 44526),

Gene: Clipper_69 Start: 43910, Stop: 44419, Start Num: 22

Candidate Starts for Clipper_69:

(Start: 22 @43910 has 175 MA's), (29, 43985), (34, 44024), (37, 44078), (45, 44156), (46, 44168), (81, 44369),

Gene: Collard_57 Start: 40042, Stop: 40617, Start Num: 22

Candidate Starts for Collard_57:

(Start: 17 @40018 has 1 MA's), (Start: 22 @40042 has 175 MA's), (32, 40150), (38, 40222), (42, 40246), (45, 40294), (46, 40306), (48, 40330), (53, 40378), (58, 40423), (76, 40513), (85, 40606),

Gene: CrimD_67 Start: 43833, Stop: 44342, Start Num: 22

Candidate Starts for CrimD_67:

(Start: 22 @43833 has 175 MA's), (29, 43908), (34, 43947), (37, 44001), (45, 44079), (46, 44091), (81, 44292),

Gene: Curiosium_69 Start: 42524, Stop: 43036, Start Num: 22

Candidate Starts for Curiosium_69:

(Start: 22 @42524 has 175 MA's), (29, 42599), (37, 42692), (41, 42710), (44, 42764), (46, 42782), (47, 42794), (51, 42836), (81, 42983),

Gene: CurlyFries_83 Start: 45467, Stop: 46030, Start Num: 23

Candidate Starts for CurlyFries_83:

(Start: 23 @45467 has 3 MA's), (26, 45521), (37, 45629), (47, 45731), (53, 45791), (55, 45821), (60, 45845),

Gene: Dadosky_61 Start: 40381, Stop: 40974, Start Num: 22

Candidate Starts for Dadosky_61:

(Start: 17 @40357 has 1 MA's), (Start: 22 @40381 has 175 MA's), (32, 40489), (38, 40561), (42, 40585), (45, 40633), (46, 40645), (47, 40657), (53, 40717), (58, 40762), (63, 40816), (64, 40819), (70, 40846), (76, 40861), (85, 40960),

Gene: Dalmuri_65 Start: 43011, Stop: 43520, Start Num: 22

Candidate Starts for Dalmuri_65:

(Start: 22 @43011 has 175 MA's), (29, 43086), (34, 43125), (37, 43179), (45, 43257), (46, 43269), (81, 43470),

Gene: DartGoblin_68 Start: 43563, Stop: 44078, Start Num: 22

Candidate Starts for DartGoblin_68:

(Start: 22 @43563 has 175 MA's), (29, 43638), (31, 43647), (37, 43731), (41, 43749), (45, 43809), (46, 43821), (47, 43833), (81, 44022),

Gene: DarthP_65 Start: 43354, Stop: 43866, Start Num: 22

Candidate Starts for DarthP_65:

(7, 43177), (9, 43186), (Start: 22 @43354 has 175 MA's), (29, 43429), (31, 43438), (37, 43522), (41, 43540), (46, 43612), (47, 43624), (53, 43684), (81, 43816), (85, 43855),

Gene: Dartin_68 Start: 43499, Stop: 44026, Start Num: 22

Candidate Starts for Dartin_68:

(Start: 22 @43499 has 175 MA's), (29, 43574), (37, 43667), (41, 43685), (46, 43757), (47, 43769), (51, 43811), (53, 43829), (80, 43961),

Gene: Deby_66 Start: 43494, Stop: 44003, Start Num: 22

Candidate Starts for Deby_66:

(Start: 22 @43494 has 175 MA's), (29, 43569), (31, 43578), (34, 43608), (37, 43662), (45, 43740), (46, 43752), (81, 43953),

Gene: Devera_73 Start: 44850, Stop: 45359, Start Num: 22

Candidate Starts for Devera_73:

(Start: 22 @44850 has 175 MA's), (29, 44925), (31, 44934), (34, 44964), (37, 45018), (45, 45096), (46, 45108), (81, 45309),

Gene: DismalFunk_68 Start: 45487, Stop: 46005, Start Num: 22

Candidate Starts for DismalFunk_68:

(10, 45337), (16, 45460), (Start: 22 @45487 has 175 MA's), (35, 45610), (37, 45652), (40, 45664), (41, 45670), (46, 45742), (47, 45754), (48, 45766), (53, 45814), (81, 45955), (85, 45994),

Gene: DismalStressor_68 Start: 45487, Stop: 46005, Start Num: 22

Candidate Starts for DismalStressor_68:

(10, 45337), (16, 45460), (Start: 22 @45487 has 175 MA's), (35, 45610), (37, 45652), (40, 45664), (41, 45670), (46, 45742), (47, 45754), (48, 45766), (53, 45814), (81, 45955), (85, 45994),

Gene: Dole_71 Start: 44853, Stop: 45362, Start Num: 22

Candidate Starts for Dole_71:

(Start: 22 @44853 has 175 MA's), (29, 44928), (31, 44937), (34, 44967), (37, 45021), (45, 45099), (46, 45111), (81, 45312),

Gene: DoubleChamp_56 Start: 40042, Stop: 40617, Start Num: 22

Candidate Starts for DoubleChamp_56:

(Start: 17 @40018 has 1 MA's), (Start: 22 @40042 has 175 MA's), (32, 40150), (38, 40222), (42, 40246), (45, 40294), (46, 40306), (48, 40330), (53, 40378), (58, 40423), (76, 40513), (85, 40606),

Gene: Doughnut_68 Start: 45102, Stop: 45620, Start Num: 22

Candidate Starts for Doughnut_68:

(Start: 22 @45102 has 175 MA's), (35, 45225), (37, 45267), (40, 45279), (41, 45285), (46, 45357), (47, 45369), (48, 45381), (53, 45429), (81, 45570), (85, 45609),

Gene: DrHayes_66 Start: 43745, Stop: 44260, Start Num: 22

Candidate Starts for DrHayes_66:

(Start: 22 @43745 has 175 MA's), (29, 43820), (37, 43913), (41, 43931), (45, 43991), (46, 44003), (81, 44204),

Gene: Durfee_65 Start: 43208, Stop: 43717, Start Num: 22

Candidate Starts for Durfee_65:

(Start: 22 @43208 has 175 MA's), (29, 43283), (34, 43322), (37, 43376), (45, 43454), (46, 43466), (81, 43667),

Gene: Edugator_58 Start: 41802, Stop: 42395, Start Num: 22

Candidate Starts for Edugator_58:

(Start: 17 @41778 has 1 MA's), (Start: 22 @41802 has 175 MA's), (32, 41910), (38, 41982), (42, 42006), (45, 42054), (46, 42066), (47, 42078), (53, 42138), (58, 42183), (63, 42237), (64, 42240), (70, 42267), (76, 42282), (85, 42381),

Gene: Efra2_71 Start: 43581, Stop: 44105, Start Num: 22

Candidate Starts for Efra2_71:

(Start: 22 @43581 has 175 MA's), (29, 43656), (37, 43749), (41, 43767), (46, 43839), (47, 43851), (51, 43893), (81, 44049),

Gene: Ekdilam_62 Start: 43584, Stop: 44096, Start Num: 22

Candidate Starts for Ekdilam_62:

(Start: 22 @43584 has 175 MA's), (29, 43659), (31, 43668), (37, 43752), (38, 43758), (46, 43842), (47, 43854), (53, 43914), (81, 44046), (84, 44079), (85, 44085),

Gene: Ellie_61 Start: 42821, Stop: 43333, Start Num: 22

Candidate Starts for Ellie_61:

(Start: 22 @42821 has 175 MA's), (29, 42896), (31, 42905), (37, 42989), (38, 42995), (41, 43007), (46, 43079), (47, 43091), (53, 43151), (81, 43286), (82, 43298),

Gene: Emerson_67 Start: 43328, Stop: 43837, Start Num: 22

Candidate Starts for Emerson_67:

(Start: 22 @43328 has 175 MA's), (29, 43403), (34, 43442), (37, 43496), (45, 43574), (46, 43586), (81, 43787),

Gene: Enkosi_56 Start: 42937, Stop: 43458, Start Num: 22

Candidate Starts for Enkosi_56:

(Start: 22 @42937 has 175 MA's), (29, 43012), (31, 43021), (37, 43105), (46, 43195), (53, 43267), (62, 43330), (66, 43357), (80, 43396),

Gene: Fefferhead_63 Start: 42730, Stop: 43242, Start Num: 22

Candidate Starts for Fefferhead_63:

(Start: 22 @42730 has 175 MA's), (29, 42805), (31, 42814), (37, 42898), (38, 42904), (41, 42916), (46, 42988), (47, 43000), (53, 43060), (81, 43195), (82, 43207),

Gene: Feyre_62 Start: 43763, Stop: 44383, Start Num: 22

Candidate Starts for Feyre_62:

(Start: 17 @43739 has 1 MA's), (Start: 22 @43763 has 175 MA's), (37, 43937), (38, 43943), (45, 44015), (46, 44027), (47, 44039), (53, 44099), (58, 44144), (68, 44219), (69, 44222), (74, 44249), (75, 44264), (85, 44369),

Gene: Findley_68 Start: 45480, Stop: 45998, Start Num: 22

Candidate Starts for Findley_68:

(10, 45330), (16, 45453), (Start: 22 @45480 has 175 MA's), (35, 45603), (37, 45645), (40, 45657), (41, 45663), (46, 45735), (47, 45747), (48, 45759), (53, 45807), (81, 45948), (85, 45987),

Gene: Ganymede_65 Start: 43234, Stop: 43743, Start Num: 22

Candidate Starts for Ganymede_65:

(Start: 22 @43234 has 175 MA's), (29, 43309), (31, 43318), (34, 43348), (37, 43402), (45, 43480), (46, 43492), (81, 43693), (84, 43726),

Gene: Gengar_59 Start: 41780, Stop: 42370, Start Num: 22

Candidate Starts for Gengar_59:

(Start: 17 @41756 has 1 MA's), (Start: 22 @41780 has 175 MA's), (28, 41858), (37, 41954), (38, 41960), (44, 42026), (45, 42032), (46, 42044), (47, 42056), (48, 42068), (53, 42116), (58, 42161), (68, 42233), (69, 42236), (77, 42263), (79, 42278), (85, 42356),

Gene: Geraldini_68 Start: 43890, Stop: 44399, Start Num: 22

Candidate Starts for Geraldini_68:

(Start: 22 @43890 has 175 MA's), (29, 43965), (34, 44004), (37, 44058), (45, 44136), (46, 44148), (81, 44349),

Gene: Guanica15_70 Start: 43322, Stop: 43843, Start Num: 22

Candidate Starts for Guanica15_70:

(Start: 22 @43322 has 175 MA's), (29, 43397), (37, 43490), (41, 43508), (46, 43580), (47, 43592), (51, 43634), (81, 43790),

Gene: Guillsminger_60 Start: 41751, Stop: 42323, Start Num: 22

Candidate Starts for Guillsminger_60:

(Start: 17 @41727 has 1 MA's), (Start: 22 @41751 has 175 MA's), (28, 41829), (37, 41925), (38, 41931), (45, 42003), (46, 42015), (47, 42027), (48, 42039), (49, 42054), (53, 42087), (58, 42132), (73, 42210), (78, 42222), (85, 42309),

Gene: Hammy_65 Start: 43342, Stop: 43854, Start Num: 22

Candidate Starts for Hammy_65:

(7, 43165), (9, 43174), (Start: 22 @43342 has 175 MA's), (29, 43417), (31, 43426), (37, 43510), (41, 43528), (46, 43600), (47, 43612), (53, 43672), (81, 43804), (85, 43843),

Gene: HedwigODU_65 Start: 42856, Stop: 43365, Start Num: 22

Candidate Starts for HedwigODU_65:

(Start: 22 @42856 has 175 MA's), (29, 42931), (31, 42940), (34, 42970), (37, 43024), (45, 43102), (46, 43114), (65, 43273), (81, 43315),

Gene: Heftyboy_60 Start: 42125, Stop: 42691, Start Num: 22

Candidate Starts for Heftyboy_60:

(Start: 17 @42101 has 1 MA's), (Start: 22 @42125 has 175 MA's), (37, 42299), (38, 42305), (45, 42377), (46, 42389), (47, 42401), (48, 42413), (53, 42461), (58, 42506), (78, 42590), (85, 42677),

Gene: Homura_65 Start: 43011, Stop: 43520, Start Num: 22

Candidate Starts for Homura_65:

(Start: 22 @43011 has 175 MA's), (29, 43086), (34, 43125), (37, 43179), (45, 43257), (46, 43269), (81, 43470),

Gene: Hurricane_67 Start: 43488, Stop: 44006, Start Num: 22

Candidate Starts for Hurricane_67:

(Start: 22 @43488 has 175 MA's), (37, 43656), (41, 43674), (46, 43746), (47, 43758), (53, 43818), (81, 43956), (84, 43989), (85, 43995),

Gene: Hyperbowlee_65 Start: 43208, Stop: 43717, Start Num: 22

Candidate Starts for Hyperbowlee_65:

(Start: 22 @43208 has 175 MA's), (29, 43283), (34, 43322), (37, 43376), (45, 43454), (46, 43466), (81, 43667),

Gene: Illumine_71 Start: 44852, Stop: 45361, Start Num: 22

Candidate Starts for Illumine_71:

(Start: 22 @44852 has 175 MA's), (29, 44927), (31, 44936), (34, 44966), (37, 45020), (45, 45098), (46, 45110), (81, 45311),

Gene: Inky_65 Start: 43011, Stop: 43520, Start Num: 22

Candidate Starts for Inky_65:

(Start: 22 @43011 has 175 MA's), (29, 43086), (34, 43125), (37, 43179), (45, 43257), (46, 43269), (81, 43470),

Gene: InvictusManeo_57 Start: 40085, Stop: 40660, Start Num: 22

Candidate Starts for InvictusManeo_57:

(Start: 17 @40061 has 1 MA's), (Start: 22 @40085 has 175 MA's), (32, 40193), (38, 40265), (42, 40289), (45, 40337), (46, 40349), (48, 40373), (53, 40421), (58, 40466), (76, 40556), (85, 40649),

Gene: JAWS_66 Start: 43287, Stop: 43796, Start Num: 22

Candidate Starts for JAWS_66:

(Start: 22 @43287 has 175 MA's), (29, 43362), (31, 43371), (34, 43401), (37, 43455), (45, 43533), (46, 43545), (81, 43746),

Gene: Jarvi_65 Start: 43011, Stop: 43520, Start Num: 22

Candidate Starts for Jarvi_65:

(Start: 22 @43011 has 175 MA's), (29, 43086), (34, 43125), (37, 43179), (45, 43257), (46, 43269), (81, 43470),

Gene: Jayhawk_67 Start: 43354, Stop: 43863, Start Num: 22

Candidate Starts for Jayhawk_67:

(Start: 22 @43354 has 175 MA's), (29, 43429), (34, 43468), (37, 43522), (45, 43600), (46, 43612), (81, 43813),

Gene: Jeckyll_65 Start: 43011, Stop: 43520, Start Num: 22

Candidate Starts for Jeckyll_65:

(Start: 22 @43011 has 175 MA's), (29, 43086), (34, 43125), (37, 43179), (45, 43257), (46, 43269), (81, 43470),

Gene: Jflix2_71 Start: 44931, Stop: 45539, Start Num: 21

Candidate Starts for Jflix2_71:

(Start: 21 @44931 has 2 MA's), (24, 44961), (28, 45003), (30, 45009), (31, 45015), (37, 45105), (46, 45198), (53, 45270),

Gene: Joy99_65 Start: 42940, Stop: 43449, Start Num: 22

Candidate Starts for Joy99_65:

(Start: 22 @42940 has 175 MA's), (29, 43015), (34, 43054), (37, 43108), (45, 43186), (46, 43198), (81, 43399),

Gene: Keshu_69 Start: 43586, Stop: 44104, Start Num: 22

Candidate Starts for Keshu_69:

(Start: 22 @43586 has 175 MA's), (37, 43754), (46, 43844), (47, 43856), (53, 43916), (81, 44054), (84, 44087), (85, 44093),

Gene: KiSi_70 Start: 44046, Stop: 44552, Start Num: 22

Candidate Starts for KiSi_70:

(Start: 22 @44046 has 175 MA's), (28, 44118), (29, 44121), (31, 44130), (37, 44214), (43, 44277), (45, 44292), (46, 44304), (47, 44316), (48, 44328), (81, 44505),

Gene: Kratio_57 Start: 39821, Stop: 40396, Start Num: 22

Candidate Starts for Kratio_57:

(Start: 17 @39797 has 1 MA's), (Start: 22 @39821 has 175 MA's), (32, 39929), (38, 40001), (42, 40025), (45, 40073), (46, 40085), (48, 40109), (53, 40157), (58, 40202), (76, 40292), (85, 40385),

Gene: Krueger_70 Start: 43119, Stop: 43637, Start Num: 22

Candidate Starts for Krueger_70:

(6, 42939), (13, 43005), (Start: 22 @43119 has 175 MA's), (29, 43194), (35, 43242), (37, 43287), (41, 43305), (45, 43365), (46, 43377), (47, 43389), (53, 43449), (81, 43587), (84, 43620), (85, 43626),

Gene: Larva_60 Start: 41253, Stop: 41846, Start Num: 22

Candidate Starts for Larva_60:

(Start: 17 @41229 has 1 MA's), (Start: 22 @41253 has 175 MA's), (32, 41361), (38, 41433), (45, 41505), (46, 41517), (47, 41529), (53, 41589), (58, 41634), (63, 41688), (64, 41691), (70, 41718), (76, 41733), (85, 41832),

Gene: LastHope_70 Start: 42442, Stop: 42954, Start Num: 22

Candidate Starts for LastHope_70:

(Start: 22 @42442 has 175 MA's), (29, 42517), (37, 42610), (41, 42628), (46, 42700), (51, 42754), (81, 42901),

Gene: LaterM_66 Start: 43705, Stop: 44214, Start Num: 22

Candidate Starts for LaterM_66:

(Start: 22 @43705 has 175 MA's), (29, 43780), (31, 43789), (34, 43819), (37, 43873), (45, 43951), (46, 43963), (81, 44164),

Gene: Lavahound_64 Start: 44098, Stop: 44610, Start Num: 22

Candidate Starts for Lavahound_64:

(11, 43969), (Start: 22 @44098 has 175 MA's), (29, 44173), (31, 44182), (37, 44266), (38, 44272), (41, 44284), (46, 44356), (47, 44368), (53, 44428), (81, 44563), (82, 44575),

Gene: LeMond_69 Start: 43680, Stop: 44186, Start Num: 22

Candidate Starts for LeMond_69:

(Start: 22 @43680 has 175 MA's), (28, 43752), (29, 43755), (31, 43764), (37, 43848), (43, 43911), (46, 43938), (47, 43950), (48, 43962), (81, 44139),

Gene: Lea83_67 Start: 43524, Stop: 44036, Start Num: 22

Candidate Starts for Lea83_67:

(Start: 22 @43524 has 175 MA's), (37, 43692), (41, 43710), (46, 43782), (47, 43794), (53, 43854), (81, 43986), (84, 44019), (85, 44025),

Gene: Leston_59 Start: 41880, Stop: 42452, Start Num: 22

Candidate Starts for Leston_59:

(Start: 17 @41856 has 1 MA's), (Start: 22 @41880 has 175 MA's), (28, 41958), (37, 42054), (38, 42060), (45, 42132), (46, 42144), (47, 42156), (48, 42168), (49, 42183), (53, 42216), (58, 42261), (73, 42339), (78, 42351), (85, 42438),

Gene: LilDirt_56 Start: 39843, Stop: 40418, Start Num: 22

Candidate Starts for LilDirt_56:

(Start: 17 @39819 has 1 MA's), (Start: 22 @39843 has 175 MA's), (32, 39951), (38, 40023), (42, 40047), (45, 40095), (46, 40107), (48, 40131), (53, 40179), (58, 40224), (76, 40314), (85, 40407),

Gene: LilPharaoh_55 Start: 40052, Stop: 40573, Start Num: 22

Candidate Starts for LilPharaoh_55:

(Start: 22 @40052 has 175 MA's), (29, 40127), (31, 40136), (37, 40220), (46, 40310), (53, 40382), (62, 40445), (66, 40472), (80, 40511),

Gene: LindNT_65 Start: 43499, Stop: 44008, Start Num: 22

Candidate Starts for LindNT_65:

(Start: 22 @43499 has 175 MA's), (29, 43574), (34, 43613), (37, 43667), (45, 43745), (46, 43757), (81, 43958),

Gene: Llorens_65 Start: 43011, Stop: 43520, Start Num: 22

Candidate Starts for Llorens_65:

(Start: 22 @43011 has 175 MA's), (29, 43086), (34, 43125), (37, 43179), (45, 43257), (46, 43269), (81, 43470),

Gene: Lunahalos_65 Start: 43011, Stop: 43520, Start Num: 22

Candidate Starts for Lunahalos_65:

(Start: 22 @43011 has 175 MA's), (29, 43086), (34, 43125), (37, 43179), (45, 43257), (46, 43269), (81, 43470),

Gene: MacKat_61 Start: 38794, Stop: 39303, Start Num: 22

Candidate Starts for MacKat_61:

(Start: 22 @38794 has 175 MA's), (29, 38869), (34, 38908), (37, 38962), (45, 39040), (46, 39052), (81, 39253),

Gene: MacnCheese_69 Start: 44105, Stop: 44629, Start Num: 22

Candidate Starts for MacnCheese_69:

(Start: 22 @44105 has 175 MA's), (31, 44189), (35, 44228), (37, 44273), (41, 44291), (46, 44363), (47, 44375), (53, 44435), (81, 44576), (84, 44609), (85, 44615),

Gene: Madraxi_75 Start: 47623, Stop: 48270, Start Num: 21

Candidate Starts for Madraxi_75:

(Start: 21 @47623 has 2 MA's), (24, 47653), (37, 47797), (46, 47890), (53, 47962),

Gene: MalagasyRose_66 Start: 42483, Stop: 43022, Start Num: 20

Candidate Starts for MalagasyRose_66:

(Start: 20 @42483 has 1 MA's), (29, 42558), (35, 42606), (40, 42660), (41, 42666), (47, 42750), (51, 42792), (53, 42810), (81, 42966), (83, 42981), (84, 42999),

Gene: Marcoliusprime_68 Start: 45487, Stop: 46005, Start Num: 22

Candidate Starts for Marcoliusprime_68:

(10, 45337), (16, 45460), (Start: 22 @45487 has 175 MA's), (35, 45610), (37, 45652), (40, 45664), (41, 45670), (46, 45742), (47, 45754), (48, 45766), (53, 45814), (81, 45955), (85, 45994),

Gene: MarkPhew_68 Start: 43181, Stop: 43687, Start Num: 22

Candidate Starts for MarkPhew_68:

(Start: 22 @43181 has 175 MA's), (29, 43256), (31, 43265), (37, 43349), (43, 43412), (44, 43421), (46, 43439), (47, 43451), (52, 43505), (81, 43640),

Gene: Marshawn_65 Start: 43539, Stop: 44048, Start Num: 22

Candidate Starts for Marshawn_65:

(Start: 22 @43539 has 175 MA's), (29, 43614), (41, 43725), (46, 43797), (47, 43809), (53, 43869), (81, 43998), (84, 44031), (85, 44037), (86, 44040),

Gene: McMater_68 Start: 43499, Stop: 44026, Start Num: 22

Candidate Starts for McMater_68:

(Start: 22 @43499 has 175 MA's), (29, 43574), (37, 43667), (41, 43685), (46, 43757), (47, 43769), (51, 43811), (53, 43829), (80, 43961),

Gene: Mdavu_55 Start: 40313, Stop: 40834, Start Num: 22

Candidate Starts for Mdavu_55:

(Start: 22 @40313 has 175 MA's), (29, 40388), (31, 40397), (37, 40481), (46, 40571), (53, 40643), (62, 40706), (66, 40733), (80, 40772),

Gene: MeaningOfLife_66 Start: 43763, Stop: 44272, Start Num: 22

Candidate Starts for MeaningOfLife_66:

(Start: 22 @43763 has 175 MA's), (29, 43838), (31, 43847), (34, 43877), (37, 43931), (45, 44009), (46, 44021), (81, 44222),

Gene: Megsy_68 Start: 43420, Stop: 43929, Start Num: 22

Candidate Starts for Megsy_68:

(Start: 22 @43420 has 175 MA's), (29, 43495), (34, 43534), (37, 43588), (45, 43666), (46, 43678), (81, 43879),

Gene: Milly_68 Start: 45460, Stop: 45978, Start Num: 22

Candidate Starts for Milly_68:

(10, 45310), (16, 45433), (Start: 22 @45460 has 175 MA's), (35, 45583), (37, 45625), (40, 45637), (41, 45643), (46, 45715), (47, 45727), (48, 45739), (53, 45787), (61, 45841), (81, 45928), (85, 45967),

Gene: Miryou_63 Start: 44477, Stop: 45067, Start Num: 22

Candidate Starts for Miryou_63:

(Start: 17 @44453 has 1 MA's), (Start: 22 @44477 has 175 MA's), (28, 44555), (37, 44651), (38, 44657), (44, 44723), (45, 44729), (46, 44741), (47, 44753), (48, 44765), (53, 44813), (58, 44858), (68, 44930), (69, 44933), (77, 44960), (79, 44975), (85, 45053),

Gene: Mufasa_68 Start: 45047, Stop: 45565, Start Num: 22

Candidate Starts for Mufasa_68:

(10, 44897), (Start: 22 @45047 has 175 MA's), (35, 45170), (37, 45212), (40, 45224), (41, 45230), (46, 45302), (47, 45314), (48, 45326), (53, 45374), (81, 45515), (85, 45554),

Gene: Murucutumbu_67 Start: 44280, Stop: 44789, Start Num: 22

Candidate Starts for Murucutumbu_67:

(Start: 22 @44280 has 175 MA's), (29, 44355), (31, 44364), (34, 44394), (37, 44448), (45, 44526), (46, 44538), (57, 44646), (81, 44739),

Gene: Mynx_67 Start: 43623, Stop: 44132, Start Num: 22

Candidate Starts for Mynx_67:

(Start: 22 @43623 has 175 MA's), (29, 43698), (31, 43707), (34, 43737), (37, 43791), (45, 43869), (46, 43881), (81, 44082),

Gene: Neighly_61 Start: 41228, Stop: 41845, Start Num: 17

Candidate Starts for Neighly_61:

(Start: 17 @41228 has 1 MA's), (Start: 22 @41252 has 175 MA's), (32, 41360), (38, 41432), (45, 41504), (46, 41516), (47, 41528), (53, 41588), (58, 41633), (63, 41687), (64, 41690), (70, 41717), (76, 41732), (85, 41831),

Gene: Nergal_58 Start: 39813, Stop: 40349, Start Num: 22

Candidate Starts for Nergal_58:

(Start: 22 @39813 has 175 MA's), (25, 39852), (35, 39936), (37, 39978), (46, 40068), (47, 40080), (51, 40122), (54, 40149), (81, 40299), (85, 40338),

Gene: Nibb_68 Start: 43393, Stop: 43899, Start Num: 22

Candidate Starts for Nibb_68:

(Start: 22 @43393 has 175 MA's), (29, 43468), (31, 43477), (37, 43561), (43, 43624), (44, 43633), (46, 43651), (47, 43663), (81, 43852),

Gene: Nikao_57 Start: 42937, Stop: 43458, Start Num: 22

Candidate Starts for Nikao_57:

(Start: 22 @42937 has 175 MA's), (29, 43012), (31, 43021), (37, 43105), (46, 43195), (53, 43267), (62, 43330), (66, 43357), (80, 43396),

Gene: Niklas_68 Start: 43560, Stop: 44087, Start Num: 22

Candidate Starts for Niklas_68:

(Start: 22 @43560 has 175 MA's), (29, 43635), (37, 43728), (41, 43746), (46, 43818), (47, 43830), (51, 43872), (53, 43890), (80, 44022),

Gene: November_63 Start: 43249, Stop: 43761, Start Num: 22

Candidate Starts for November_63:

(Start: 22 @43249 has 175 MA's), (29, 43324), (31, 43333), (37, 43417), (41, 43435), (46, 43507), (47, 43519), (53, 43579), (81, 43711), (85, 43750),

Gene: Nutello_54 Start: 40324, Stop: 40845, Start Num: 22

Candidate Starts for Nutello_54:

(Start: 22 @40324 has 175 MA's), (29, 40399), (31, 40408), (37, 40492), (46, 40582), (53, 40654), (62, 40717), (66, 40744), (80, 40783),

Gene: OkiRoe_60 Start: 42149, Stop: 42739, Start Num: 22

Candidate Starts for OkiRoe_60:

(Start: 17 @42125 has 1 MA's), (Start: 22 @42149 has 175 MA's), (28, 42227), (37, 42323), (38, 42329), (44, 42395), (45, 42401), (46, 42413), (47, 42425), (48, 42437), (53, 42485), (58, 42530), (68, 42602), (69, 42605), (77, 42632), (79, 42647), (85, 42725),

Gene: Omnicron_63 Start: 42235, Stop: 42843, Start Num: 17

Candidate Starts for Omnicron_63:

(Start: 17 @42235 has 1 MA's), (Start: 22 @42259 has 175 MA's), (37, 42427), (38, 42433), (43, 42490), (46, 42517), (47, 42529), (48, 42541), (53, 42589), (63, 42685), (64, 42688), (85, 42829),

Gene: Oscar_69 Start: 43597, Stop: 44103, Start Num: 22

Candidate Starts for Oscar_69:

(Start: 22 @43597 has 175 MA's), (28, 43669), (29, 43672), (31, 43681), (37, 43765), (43, 43828), (46, 43855), (47, 43867), (48, 43879), (81, 44056),

Gene: Padfoot_65 Start: 43208, Stop: 43717, Start Num: 22

Candidate Starts for Padfoot_65:

(Start: 22 @43208 has 175 MA's), (29, 43283), (34, 43322), (37, 43376), (45, 43454), (46, 43466), (81, 43667),

Gene: Padpat_68 Start: 43328, Stop: 43837, Start Num: 22

Candidate Starts for Padpat_68:

(Start: 22 @43328 has 175 MA's), (29, 43403), (34, 43442), (37, 43496), (45, 43574), (46, 43586), (81, 43787),

Gene: Paola_59 Start: 41751, Stop: 42323, Start Num: 22

Candidate Starts for Paola_59:

(Start: 17 @41727 has 1 MA's), (Start: 22 @41751 has 175 MA's), (28, 41829), (37, 41925), (38, 41931), (45, 42003), (46, 42015), (47, 42027), (48, 42039), (49, 42054), (53, 42087), (58, 42132), (73, 42210), (78, 42222), (85, 42309),

Gene: Peanam_68 Start: 43517, Stop: 44044, Start Num: 22

Candidate Starts for Peanam_68:

(Start: 22 @43517 has 175 MA's), (29, 43592), (37, 43685), (41, 43703), (46, 43775), (47, 43787), (51, 43829), (53, 43847), (80, 43979),

Gene: Peel_65 Start: 43013, Stop: 43522, Start Num: 22

Candidate Starts for Peel_65:

(Start: 22 @43013 has 175 MA's), (29, 43088), (34, 43127), (37, 43181), (45, 43259), (46, 43271), (81, 43472),

Gene: Pharb_66 Start: 42835, Stop: 43353, Start Num: 22

Candidate Starts for Pharb_66:

(Start: 22 @42835 has 175 MA's), (37, 43003), (41, 43021), (46, 43093), (47, 43105), (53, 43165), (81, 43303), (84, 43336), (85, 43342),

Gene: PhelpsODU_67 Start: 42757, Stop: 43275, Start Num: 22

Candidate Starts for PhelpsODU_67:

(6, 42577), (13, 42643), (Start: 22 @42757 has 175 MA's), (29, 42832), (35, 42880), (37, 42925), (41, 42943), (46, 43015), (47, 43027), (53, 43087), (81, 43225), (84, 43258), (85, 43264),

Gene: Phrank_69 Start: 42821, Stop: 43339, Start Num: 22

Candidate Starts for Phrank_69:

(6, 42641), (13, 42707), (Start: 22 @42821 has 175 MA's), (29, 42896), (35, 42944), (37, 42989), (41, 43007), (46, 43079), (53, 43151), (81, 43289), (84, 43322), (85, 43328),

Gene: Piatt_65 Start: 43208, Stop: 43717, Start Num: 22

Candidate Starts for Piatt_65:

(Start: 22 @43208 has 175 MA's), (29, 43283), (34, 43322), (37, 43376), (45, 43454), (46, 43466), (81, 43667),

Gene: Pisa1_65 Start: 43826, Stop: 44335, Start Num: 22

Candidate Starts for Pisa1_65:

(Start: 22 @43826 has 175 MA's), (29, 43901), (37, 43994), (41, 44012), (46, 44084), (47, 44096), (81, 44285),

Gene: Pisa4_59 Start: 39195, Stop: 39704, Start Num: 22

Candidate Starts for Pisa4_59:

(Start: 22 @39195 has 175 MA's), (29, 39270), (37, 39363), (41, 39381), (46, 39453), (47, 39465), (81, 39654),

Gene: Pixie_66 Start: 43008, Stop: 43526, Start Num: 22

Candidate Starts for Pixie_66:

(Start: 22 @43008 has 175 MA's), (31, 43092), (37, 43176), (41, 43194), (43, 43239), (46, 43266), (47, 43278), (53, 43338), (81, 43476), (84, 43509), (85, 43515),

Gene: Pokerus_65 Start: 43353, Stop: 43862, Start Num: 22

Candidate Starts for Pokerus_65:

(Start: 22 @43353 has 175 MA's), (29, 43428), (34, 43467), (37, 43521), (45, 43599), (46, 43611), (81, 43812),

Gene: Prithvi_67 Start: 43499, Stop: 44008, Start Num: 22

Candidate Starts for Prithvi_67:

(Start: 22 @43499 has 175 MA's), (29, 43574), (34, 43613), (37, 43667), (45, 43745), (46, 43757), (81, 43958),

Gene: Psycho_59 Start: 40378, Stop: 40971, Start Num: 22

Candidate Starts for Psycho_59:

(Start: 17 @40354 has 1 MA's), (Start: 22 @40378 has 175 MA's), (32, 40486), (38, 40558), (42, 40582), (45, 40630), (46, 40642), (47, 40654), (53, 40714), (58, 40759), (63, 40813), (64, 40816), (70, 40843), (76, 40858), (85, 40957),

Gene: QuincyRose_63 Start: 43234, Stop: 43743, Start Num: 22

Candidate Starts for QuincyRose_63:

(Start: 22 @43234 has 175 MA's), (29, 43309), (31, 43318), (34, 43348), (37, 43402), (45, 43480), (46, 43492), (81, 43693), (84, 43726),

Gene: Ramen_66 Start: 42858, Stop: 43367, Start Num: 22

Candidate Starts for Ramen_66:

(Start: 22 @42858 has 175 MA's), (29, 42933), (31, 42942), (34, 42972), (37, 43026), (45, 43104), (46, 43116), (65, 43275), (81, 43317),

Gene: Rando14_61 Start: 39976, Stop: 40557, Start Num: 22

Candidate Starts for Rando14_61:

(Start: 17 @39952 has 1 MA's), (Start: 22 @39976 has 175 MA's), (37, 40144), (38, 40150), (43, 40207), (45, 40222), (46, 40234), (47, 40246), (48, 40258), (53, 40306), (63, 40402), (64, 40405), (80, 40492), (85, 40543),

Gene: Rapunzel97_67 Start: 43309, Stop: 43818, Start Num: 22

Candidate Starts for Rapunzel97_67:

(Start: 22 @43309 has 175 MA's), (29, 43384), (31, 43393), (34, 43423), (37, 43477), (45, 43555), (46, 43567), (81, 43768),

Gene: RegnumDei_78 Start: 46080, Stop: 46646, Start Num: 23

Candidate Starts for RegnumDei_78:

(15, 46044), (Start: 23 @46080 has 3 MA's), (26, 46134), (37, 46242), (47, 46344), (53, 46404), (55, 46434), (60, 46458),

Gene: Richo_68 Start: 43499, Stop: 44026, Start Num: 22

Candidate Starts for Richo_68:

(Start: 22 @43499 has 175 MA's), (29, 43574), (37, 43667), (41, 43685), (46, 43757), (47, 43769), (51, 43811), (53, 43829), (80, 43961),

Gene: Rosmarinus_65 Start: 42999, Stop: 43508, Start Num: 22

Candidate Starts for Rosmarinus_65:

(Start: 22 @42999 has 175 MA's), (29, 43074), (34, 43113), (37, 43167), (45, 43245), (46, 43257), (81, 43458),

Gene: SFuller_69 Start: 45080, Stop: 45724, Start Num: 21

Candidate Starts for SFuller_69:

(Start: 21 @45080 has 2 MA's), (24, 45110), (29, 45155), (30, 45158), (33, 45185), (37, 45254), (46, 45347), (53, 45419),

Gene: SamuelLPlaqson_66 Start: 43745, Stop: 44260, Start Num: 22

Candidate Starts for SamuelLPlaqson_66:

(Start: 22 @43745 has 175 MA's), (29, 43820), (37, 43913), (41, 43931), (45, 43991), (46, 44003), (81, 44204),

Gene: Scarlett_70 Start: 43927, Stop: 44433, Start Num: 22

Candidate Starts for Scarlett_70:

(Start: 22 @43927 has 175 MA's), (28, 43999), (29, 44002), (31, 44011), (37, 44095), (43, 44158), (45, 44173), (46, 44185), (47, 44197), (48, 44209), (81, 44386),

Gene: SgtBeansprout_55 Start: 40324, Stop: 40845, Start Num: 22

Candidate Starts for SgtBeansprout_55:

(Start: 22 @40324 has 175 MA's), (29, 40399), (31, 40408), (37, 40492), (46, 40582), (53, 40654), (62, 40717), (66, 40744), (80, 40783),

Gene: Shadow1_70 Start: 43271, Stop: 43789, Start Num: 22

Candidate Starts for Shadow1_70:

(Start: 22 @43271 has 175 MA's), (29, 43346), (35, 43394), (37, 43439), (41, 43457), (46, 43529), (47, 43541), (53, 43601), (81, 43739), (84, 43772), (85, 43778),

Gene: Shagrat_82 Start: 45931, Stop: 46494, Start Num: 23

Candidate Starts for Shagrat_82:

(Start: 23 @45931 has 3 MA's), (26, 45985), (37, 46093), (40, 46105), (47, 46195), (55, 46285), (60, 46309),

Gene: Shaobing_68 Start: 43535, Stop: 44062, Start Num: 22

Candidate Starts for Shaobing_68:

(Start: 22 @43535 has 175 MA's), (29, 43610), (37, 43703), (41, 43721), (46, 43793), (47, 43805), (51, 43847), (53, 43865), (80, 43997),

Gene: ShedlockHolmes_68 Start: 43528, Stop: 44040, Start Num: 22

Candidate Starts for ShedlockHolmes_68:

(Start: 22 @43528 has 175 MA's), (37, 43696), (41, 43714), (46, 43786), (47, 43798), (53, 43858), (81, 43990), (84, 44023), (85, 44029),

Gene: ShiaSurprise_66 Start: 43208, Stop: 43717, Start Num: 22

Candidate Starts for ShiaSurprise_66:

(Start: 22 @43208 has 175 MA's), (29, 43283), (34, 43322), (37, 43376), (45, 43454), (46, 43466), (81, 43667),

Gene: SirPhilip_65 Start: 43696, Stop: 44205, Start Num: 22

Candidate Starts for SirPhilip_65:

(Start: 22 @43696 has 175 MA's), (29, 43771), (37, 43864), (41, 43882), (46, 43954), (47, 43966), (54, 44035), (85, 44194),

Gene: Slimphazie_66 Start: 43309, Stop: 43818, Start Num: 22

Candidate Starts for Slimphazie_66:

(Start: 22 @43309 has 175 MA's), (29, 43384), (31, 43393), (34, 43423), (37, 43477), (45, 43555), (46, 43567), (81, 43768),

Gene: SoSeph_60 Start: 42125, Stop: 42691, Start Num: 22

Candidate Starts for SoSeph_60:

(Start: 17 @42101 has 1 MA's), (Start: 22 @42125 has 175 MA's), (37, 42299), (38, 42305), (45, 42377), (46, 42389), (47, 42401), (48, 42413), (53, 42461), (58, 42506), (78, 42590), (85, 42677),

Gene: Spock_65 Start: 43012, Stop: 43521, Start Num: 22

Candidate Starts for Spock_65:

(Start: 22 @43012 has 175 MA's), (29, 43087), (34, 43126), (37, 43180), (45, 43258), (46, 43270), (81, 43471),

Gene: Stinson_67 Start: 43637, Stop: 44149, Start Num: 22

Candidate Starts for Stinson_67:

(Start: 22 @43637 has 175 MA's), (29, 43712), (31, 43721), (34, 43751), (37, 43805), (45, 43883), (46, 43895), (81, 44096),

Gene: Strobilo_69 Start: 45462, Stop: 45980, Start Num: 22

Candidate Starts for Strobilo_69:

(10, 45312), (16, 45435), (Start: 22 @45462 has 175 MA's), (35, 45585), (37, 45627), (40, 45639), (41, 45645), (46, 45717), (47, 45729), (48, 45741), (53, 45789), (81, 45930), (85, 45969),

Gene: Sulley_65 Start: 43072, Stop: 43581, Start Num: 22

Candidate Starts for Sulley_65:

(Start: 22 @43072 has 175 MA's), (29, 43147), (34, 43186), (37, 43240), (46, 43330), (81, 43531),

Gene: Sunflower1121_71 Start: 43417, Stop: 43935, Start Num: 22

Candidate Starts for Sunflower1121_71:

(Start: 22 @43417 has 175 MA's), (29, 43492), (35, 43540), (37, 43585), (41, 43603), (46, 43675), (47, 43687), (53, 43747), (81, 43885), (84, 43918), (85, 43924),

Gene: Syra333_69 Start: 43131, Stop: 43649, Start Num: 22

Candidate Starts for Syra333_69:

(6, 42951), (13, 43017), (Start: 22 @43131 has 175 MA's), (29, 43206), (35, 43254), (37, 43299), (41, 43317), (45, 43377), (46, 43389), (47, 43401), (53, 43461), (81, 43599), (84, 43632), (85, 43638),

Gene: TBond007_63 Start: 43007, Stop: 43525, Start Num: 22

Candidate Starts for TBond007_63:

(Start: 22 @43007 has 175 MA's), (31, 43091), (37, 43175), (41, 43193), (43, 43238), (46, 43265), (47, 43277), (53, 43337), (81, 43475), (84, 43508), (85, 43514),

Gene: TClif_67 Start: 43102, Stop: 43614, Start Num: 22

Candidate Starts for TClif_67:

(Start: 22 @43102 has 175 MA's), (29, 43177), (31, 43186), (36, 43243), (37, 43270), (41, 43288), (46, 43360), (47, 43372), (53, 43432), (80, 43552), (81, 43564), (83, 43579), (84, 43597), (85, 43603),

Gene: TM4_66 Start: 40125, Stop: 40643, Start Num: 22

Candidate Starts for TM4_66:

(10, 39975), (16, 40098), (Start: 22 @40125 has 175 MA's), (35, 40248), (37, 40290), (40, 40302), (41, 40308), (46, 40380), (47, 40392), (48, 40404), (53, 40452), (81, 40593), (85, 40632),

Gene: TPA4_50 Start: 38139, Stop: 38771, Start Num: 18

Candidate Starts for TPA4_50:

(1, 37530), (2, 37686), (5, 37959), (14, 38043), (18, 38139), (40, 38325), (44, 38379), (45, 38385), (46, 38397), (48, 38421), (54, 38478), (56, 38508), (59, 38517), (72, 38622),

Gene: Tachez_65 Start: 42856, Stop: 43365, Start Num: 22

Candidate Starts for Tachez_65:

(Start: 22 @42856 has 175 MA's), (29, 42931), (34, 42970), (37, 43024), (45, 43102), (46, 43114), (81, 43315),

Gene: TaiwanKao_68 Start: 43561, Stop: 44070, Start Num: 22

Candidate Starts for TaiwanKao_68:

(Start: 22 @43561 has 175 MA's), (29, 43636), (34, 43675), (37, 43729), (45, 43807), (46, 43819), (50, 43867), (81, 44020),

Gene: Teejan_56 Start: 42937, Stop: 43458, Start Num: 22

Candidate Starts for Teejan_56:

(Start: 22 @42937 has 175 MA's), (29, 43012), (31, 43021), (37, 43105), (46, 43195), (53, 43267), (62, 43330), (66, 43357), (80, 43396),

Gene: Thyatira_62 Start: 44083, Stop: 44655, Start Num: 22

Candidate Starts for Thyatira_62:

(Start: 17 @44059 has 1 MA's), (Start: 22 @44083 has 175 MA's), (37, 44257), (38, 44263), (44, 44329), (45, 44335), (46, 44347), (47, 44359), (48, 44371), (53, 44419), (58, 44464), (71, 44542), (78, 44554), (85, 44641),

Gene: Tierra_69 Start: 43632, Stop: 44150, Start Num: 22

Candidate Starts for Tierra_69:

(6, 43452), (13, 43518), (Start: 22 @43632 has 175 MA's), (29, 43707), (35, 43755), (37, 43800), (41, 43818), (46, 43890), (53, 43962), (81, 44100), (84, 44133), (85, 44139),

Gene: Tigress9_72 Start: 43448, Stop: 43966, Start Num: 22

Candidate Starts for Tigress9_72:

(6, 43268), (8, 43277), (13, 43334), (Start: 22 @43448 has 175 MA's), (29, 43523), (35, 43571), (37, 43616), (41, 43634), (45, 43694), (46, 43706), (47, 43718), (53, 43778), (81, 43916), (84, 43949), (85, 43955),

Gene: TingHuaYa_69 Start: 42808, Stop: 43320, Start Num: 22

Candidate Starts for TingHuaYa_69:

(Start: 22 @42808 has 175 MA's), (29, 42883), (31, 42892), (37, 42976), (41, 42994), (46, 43066), (47, 43078), (51, 43120), (81, 43267),

Gene: TiniBug_66 Start: 43741, Stop: 44256, Start Num: 22

Candidate Starts for TiniBug_66:

(Start: 22 @43741 has 175 MA's), (29, 43816), (37, 43909), (41, 43927), (45, 43987), (46, 43999), (81, 44200),

Gene: TinyDot_45 Start: 30672, Stop: 31235, Start Num: 19

Candidate Starts for TinyDot_45:

(3, 30327), (4, 30393), (12, 30549), (Start: 19 @30672 has 1 MA's), (37, 30846), (51, 30993), (80, 31191),

Gene: Tiri_66 Start: 43145, Stop: 43654, Start Num: 22

Candidate Starts for Tiri_66:

(Start: 22 @43145 has 175 MA's), (29, 43220), (34, 43259), (37, 43313), (45, 43391), (46, 43403), (81, 43604),

Gene: Topper_65 Start: 43011, Stop: 43520, Start Num: 22

Candidate Starts for Topper_65:

(Start: 22 @43011 has 175 MA's), (29, 43086), (34, 43125), (37, 43179), (45, 43257), (46, 43269), (81, 43470),

Gene: Torres_57 Start: 42938, Stop: 43459, Start Num: 22

Candidate Starts for Torres_57:

(Start: 22 @42938 has 175 MA's), (29, 43013), (31, 43022), (37, 43106), (46, 43196), (53, 43268), (62, 43331), (66, 43358), (80, 43397),

Gene: TreyKay_67 Start: 43499, Stop: 44008, Start Num: 22

Candidate Starts for TreyKay_67:

(Start: 22 @43499 has 175 MA's), (29, 43574), (34, 43613), (37, 43667), (45, 43745), (46, 43757), (81, 43958),

Gene: TribelTrouble_67 Start: 44010, Stop: 44528, Start Num: 22

Candidate Starts for TribelTrouble_67:

(Start: 22 @44010 has 175 MA's), (38, 44184), (41, 44196), (43, 44241), (46, 44268), (47, 44280), (53, 44340), (84, 44511), (85, 44517),

Gene: Trice_54 Start: 40325, Stop: 40846, Start Num: 22

Candidate Starts for Trice_54:

(Start: 22 @40325 has 175 MA's), (29, 40400), (31, 40409), (37, 40493), (46, 40583), (53, 40655), (62, 40718), (66, 40745), (80, 40784),

Gene: TruffulaTree_66 Start: 43305, Stop: 43814, Start Num: 22

Candidate Starts for TruffulaTree_66:

(Start: 22 @43305 has 175 MA's), (29, 43380), (31, 43389), (34, 43419), (37, 43473), (45, 43551), (46, 43563), (81, 43764),

Gene: Twitch_65 Start: 43013, Stop: 43522, Start Num: 22

Candidate Starts for Twitch_65:

(Start: 22 @43013 has 175 MA's), (29, 43088), (34, 43127), (37, 43181), (45, 43259), (46, 43271), (81, 43472),

Gene: Unicorn_67 Start: 42757, Stop: 43275, Start Num: 22

Candidate Starts for Unicorn_67:

(6, 42577), (13, 42643), (Start: 22 @42757 has 175 MA's), (29, 42832), (35, 42880), (37, 42925), (41, 42943), (46, 43015), (47, 43027), (53, 43087), (81, 43225), (84, 43258), (85, 43264),

Gene: Urkel_66 Start: 43745, Stop: 44260, Start Num: 22

Candidate Starts for Urkel_66:

(Start: 22 @43745 has 175 MA's), (29, 43820), (37, 43913), (41, 43931), (45, 43991), (46, 44003), (81, 44204),

Gene: Validus_70 Start: 43876, Stop: 44394, Start Num: 22

Candidate Starts for Validus_70:

(Start: 22 @43876 has 175 MA's), (27, 43939), (29, 43951), (31, 43960), (35, 43999), (37, 44044), (41, 44062), (46, 44134), (47, 44146), (51, 44188), (53, 44206), (80, 44332),

Gene: Veliki_67 Start: 43278, Stop: 43787, Start Num: 22

Candidate Starts for Veliki_67:

(Start: 22 @43278 has 175 MA's), (29, 43353), (31, 43362), (34, 43392), (37, 43446), (45, 43524), (46, 43536), (81, 43737),

Gene: ViviJ_58 Start: 39842, Stop: 40417, Start Num: 22

Candidate Starts for ViviJ_58:

(Start: 17 @39818 has 1 MA's), (Start: 22 @39842 has 175 MA's), (32, 39950), (38, 40022), (42, 40046), (45, 40094), (46, 40106), (48, 40130), (53, 40178), (58, 40223), (76, 40313), (85, 40406),

Gene: Waterfoul_61 Start: 42187, Stop: 42753, Start Num: 22

Candidate Starts for Waterfoul_61:

(Start: 17 @42163 has 1 MA's), (Start: 22 @42187 has 175 MA's), (37, 42361), (38, 42367), (45, 42439), (46, 42451), (47, 42463), (48, 42475), (53, 42523), (58, 42568), (78, 42652), (85, 42739),

Gene: Ximenita_71 Start: 43457, Stop: 43978, Start Num: 22

Candidate Starts for Ximenita_71:

(6, 43277), (Start: 22 @43457 has 175 MA's), (29, 43532), (35, 43580), (37, 43625), (41, 43643), (46, 43715), (47, 43727), (53, 43787), (81, 43928), (84, 43961), (85, 43967),

Gene: YoureAdopted_65 Start: 43424, Stop: 43933, Start Num: 22

Candidate Starts for YoureAdopted_65:

(Start: 22 @43424 has 175 MA's), (29, 43499), (34, 43538), (37, 43592), (45, 43670), (46, 43682), (81, 43883),

Gene: Yuna_70 Start: 44572, Stop: 45099, Start Num: 22

Candidate Starts for Yuna_70:

(Start: 22 @44572 has 175 MA's), (29, 44647), (35, 44695), (37, 44740), (40, 44752), (41, 44758), (46, 44830), (47, 44842), (62, 44965), (85, 45088),

Gene: Yunkel11_70 Start: 43327, Stop: 43848, Start Num: 22

Candidate Starts for Yunkel11_70:

(Start: 22 @43327 has 175 MA's), (29, 43402), (37, 43495), (41, 43513), (46, 43585), (47, 43597), (51, 43639), (81, 43795),

Gene: Zabiza_60 Start: 39161, Stop: 39670, Start Num: 22

Candidate Starts for Zabiza_60:

(Start: 22 @39161 has 175 MA's), (29, 39236), (31, 39245), (34, 39275), (37, 39329), (45, 39407), (46, 39419), (65, 39578), (81, 39620),

Gene: Zavala_68 Start: 43583, Stop: 44092, Start Num: 22

Candidate Starts for Zavala_68:

(Start: 22 @43583 has 175 MA's), (29, 43658), (31, 43667), (34, 43697), (37, 43751), (45, 43829), (46, 43841), (81, 44042),

Gene: ZoeJ_67 Start: 44866, Stop: 45384, Start Num: 22

Candidate Starts for ZoeJ_67:

(10, 44716), (Start: 22 @44866 has 175 MA's), (35, 44989), (37, 45031), (39, 45040), (40, 45043), (41, 45049), (46, 45121), (47, 45133), (48, 45145), (53, 45193), (81, 45334), (85, 45373),