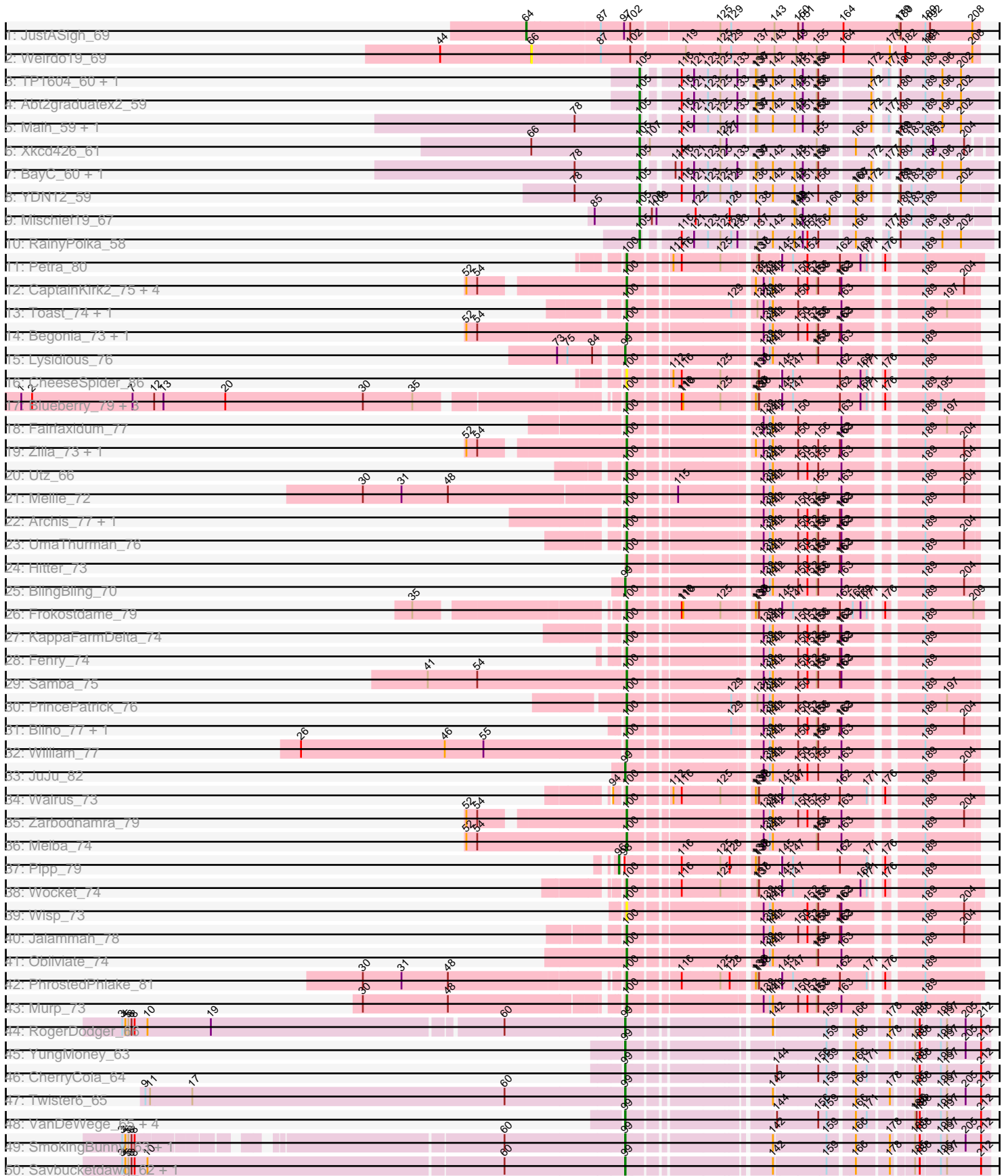
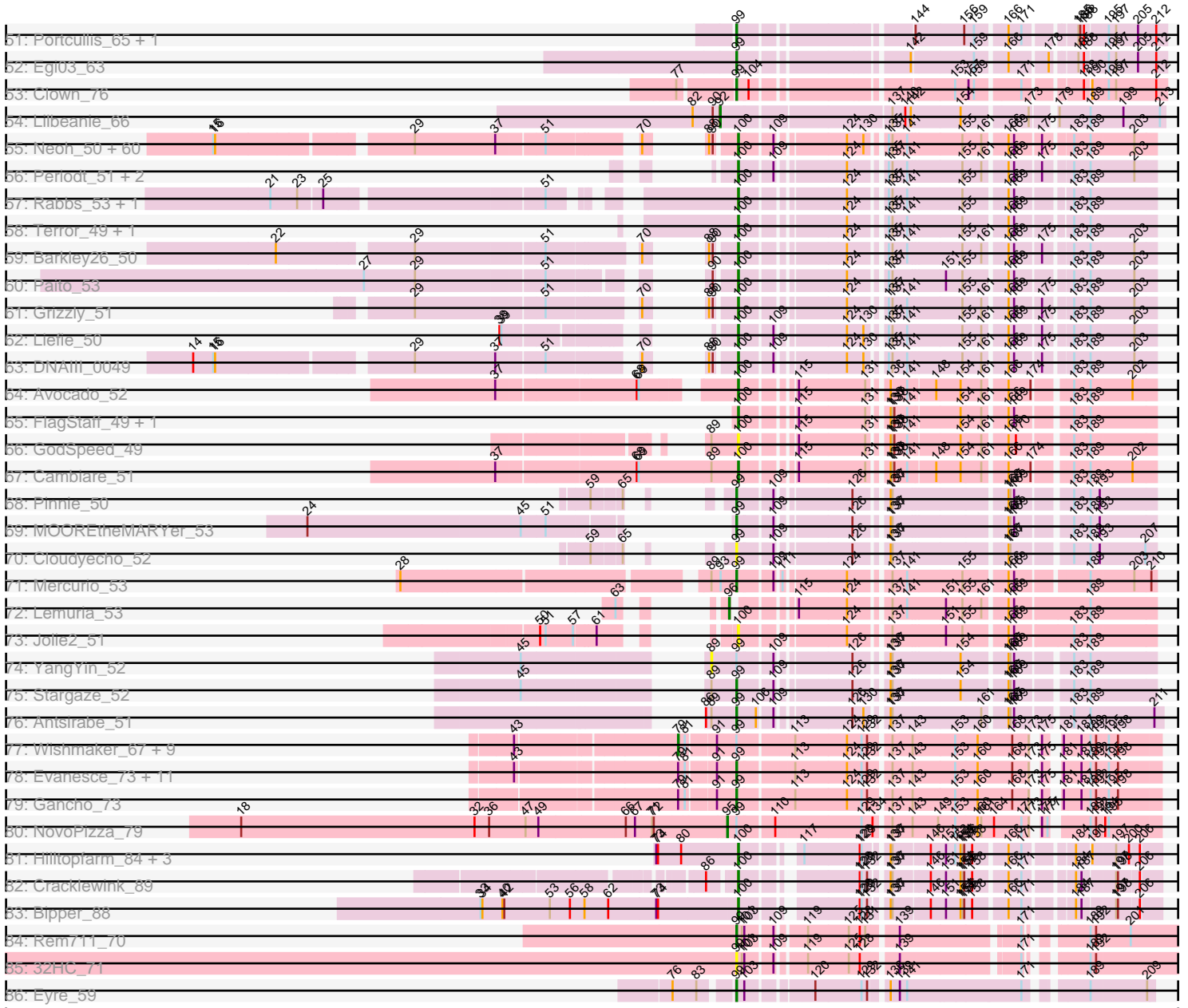


Pham 294446



Pham 294446



Note: Tracks are now grouped by subcluster and scaled. Switching in subcluster is indicated by changes in track color. Track scale is now set by default to display the region 30 bp upstream of start 1 to 30 bp downstream of the last possible start. If this default region is judged to be packed too tightly with annotated starts, the track will be further scaled to only show that region of the ORF with annotated starts. This action will be indicated by adding "Zoomed" to the title. For starts, yellow indicates the location of called starts comprised solely of Glimmer/GeneMark auto-annotations, green indicates the location of called starts with at least 1 manual gene annotation.

Pham 294446 Report

This analysis was run 04/18/26 on database version 643.

Pham number 294446 has 196 members, 23 are drafts.

Phages represented in each track:

- Track 1 : JustASigh_69
- Track 2 : Weirido19_69
- Track 3 : TP1604_60, BabyGotBac_61
- Track 4 : Abt2graduatex2_59
- Track 5 : Maih_59, Asis_60
- Track 6 : Xkcd426_61
- Track 7 : BayC_60, Salete_60
- Track 8 : YDN12_59
- Track 9 : Mischief19_67
- Track 10 : RainyPolka_58
- Track 11 : Petra_80
- Track 12 : CaptainKirk2_75, Guacamole_73, Delian_78, MintFen_75, JasperJr_73
- Track 13 : Toast_74, PCoral7_74
- Track 14 : Begonia_73, Malachai_73
- Track 15 : Lysidious_76
- Track 16 : CheeseSpider_86
- Track 17 : Blueberry_79, Gambino_82, Azula_80, MissRona_80
- Track 18 : Fairfaxidum_77
- Track 19 : Zilla_73, Barco_72
- Track 20 : Utz_66
- Track 21 : Mellie_72
- Track 22 : Archis_77, ZiggyZoo_76
- Track 23 : UmaThurman_76
- Track 24 : Hitter_73
- Track 25 : BlingBling_70
- Track 26 : Frokostdame_79
- Track 27 : KappaFarmDelta_74
- Track 28 : Fenry_74
- Track 29 : Samba_75
- Track 30 : PrincePatrick_76
- Track 31 : Blino_77, CarolAnn_76
- Track 32 : William_77
- Track 33 : JuJu_82
- Track 34 : Walrus_73
- Track 35 : Zarbodnamra_79
- Track 36 : Melba_74
- Track 37 : Pipp_79

- Track 38 : Wocket_74
- Track 39 : Wisp_73
- Track 40 : Jalamah_78
- Track 41 : Obliviate_74
- Track 42 : PhrostedPhlake_81
- Track 43 : Murp_73
- Track 44 : RogerDodger_66
- Track 45 : YungMoney_63
- Track 46 : CherryCola_64
- Track 47 : Twister6_65
- Track 48 : VanDeWege_65, Valary_64, Gezellig_61, CoveyB_64, Wizard_61
- Track 49 : SmokingBunny_63, Togo_62
- Track 50 : Savbucketdawg_62, Jambalaya_62
- Track 51 : Portcullis_65, Halo3_62
- Track 52 : Egi03_63
- Track 53 : Clown_76
- Track 54 : Lilbeanie_66
- Track 55 : Neoh_50, MZKinsey_49, Maliketh_49, Avrafan_51, Sizemore_51, Frosty24_51, Olga_51, Phloodle_49, Zombie_50, Phish_50, Wendigo_49, Hotshotbaby7_51, Hope_51, BPs_51, Kareem_51, BruceB_51, TinaBug_51, Aroostook_51, Plagueis_51, JorRay_51, Gideon_52, Cedasite_51, Cherrybomb426_51, Ruriko_49, Annihilator_51, Phreak_51, Mowgli_51, Renaissance_51, GoldenAsh_50, Remy19_51, Darionha_51, Crespo_50, Jeillious_50, ShaboiShabazz_50, AizenPogi_50, CLED96_51, Gomashi_50, Camri_51, Richarlison_49, PinkYoshi_51, DingDing_49, BQuat_51, Jane_51, Peeb_50, CassieYates_51, AzulaCat_51, TomBrady_51, Coleslaw_51, OctaviousRex_50, Angel_51, Sweets_50, Kasen3_51, ZoMa_49, DMoney_50, ECartman_49, Schiebel_51, Halo_51, Marmie_51, Jonghyun_49, Chance64_51, LouisV14_53
- Track 56 : Periodt_51, Jolene_51, Rattrick_51
- Track 57 : Rabbs_53, Sneeze_52
- Track 58 : Terror_49, Taheera_49
- Track 59 : Barkley26_50
- Track 60 : Paito_53
- Track 61 : Grizzly_51
- Track 62 : Liefie_50
- Track 63 : DNAlII_0049
- Track 64 : Avocado_52
- Track 65 : FlagStaff_49, Pace1224_50
- Track 66 : GodSpeed_49
- Track 67 : Cambiare_51
- Track 68 : Pinnie_50
- Track 69 : MOOREtheMARYer_53
- Track 70 : Cloudyecho_52
- Track 71 : Mercurio_53
- Track 72 : Lemuria_53
- Track 73 : Jolie2_51
- Track 74 : YangYin_52
- Track 75 : Stargaze_52
- Track 76 : Antsirabe_51
- Track 77 : Wishmaker_67, Luna22_67, Hadrien_71, Luke_71, Daegal_76, Giles_67, Dewey_67, Hail_67, Gravallia_68, Forge_67

- Track 78 : Evanesce_73, Amymech_74, Ein37_74, Webster2_74, OBUpride_73, Amochick_75, LilHazelNut_74, Kinbote_72, Ubuntu_74, DeepSoil15_74, HH92_73, BloominB_74
- Track 79 : Gancho_73
- Track 80 : NovoPizza_79
- Track 81 : Hilltopfarm_84, Faiyaz_85, AuntGwenStacy_83, Typha_83
- Track 82 : Cracklewink_89
- Track 83 : Bipper_88
- Track 84 : Rem711_70
- Track 85 : 32HC_71
- Track 86 : Eyre_59

Summary of Final Annotations (See graph section above for start numbers):

The start number called the most often in the published annotations is 100, it was called in 108 of the 173 non-draft genes in the pham.

Genes that call this "Most Annotated" start:

- AizenPogi_50, Angel_51, Annihilator_51, Archis_77, Aroostook_51, AuntGwenStacy_83, Avocado_52, Avrafan_51, AzulaCat_51, Azula_80, BPs_51, BQuat_51, Barco_72, Barkley26_50, Begonia_73, Bipper_88, Blino_77, Blueberry_79, BruceB_51, CLED96_51, Cambiare_51, Camri_51, CaptainKirk2_75, CarolAnn_76, CassieYates_51, Cedasite_51, Chance64_51, CheeseSpider_86, Cherrybomb426_51, Coleslaw_51, Cracklewink_89, Crespo_50, DMoney_50, DNAIII_0049, Darionha_51, Delian_78, DingDing_49, ECartman_49, Fairfaxidum_77, Faiyaz_85, Fenry_74, FlagStaff_49, Frokostdame_79, Frosty24_51, Gambino_82, Gideon_52, GodSpeed_49, GoldenAsh_50, Gomashi_50, Grizzly_51, Guacamole_73, Halo_51, Hilltopfarm_84, Hitter_73, Hope_51, Hotshotbaby7_51, Jalammah_78, Jane_51, JasperJr_73, Jeilious_50, Jolene_51, Jolie2_51, Jonghyun_49, JorRay_51, KappaFarmDelta_74, Kareem_51, Kasen3_51, Liefie_50, LouisV14_53, MZKinsey_49, Malachai_73, Maliketh_49, Marmie_51, Melba_74, Mellie_72, MintFen_75, MissRona_80, Mowgli_51, Murp_73, Neoh_50, Obliviate_74, OctaviousRex_50, Olga_51, PCoral7_74, Pace1224_50, Paito_53, Peeb_50, Periodt_51, Petra_80, Phish_50, Phloodle_49, Phreak_51, PhrostedPhlake_81, PinkYoshi_51, Plagueis_51, PrincePatrick_76, Rabbs_53, Rattrick_51, Remy19_51, Renaissance_51, Richarlison_49, Ruriko_49, Samba_75, Schiebel_51, ShaboiShabazz_50, Sizemore_51, Sneeze_52, Sweets_50, Taheera_49, Terror_49, TinaBug_51, Toast_74, TomBrady_51, Typha_83, UmaThurman_76, Utz_66, Walrus_73, Wendigo_49, William_77, Wisp_73, Wocket_74, Zarbodnamra_79, ZiggyZoo_76, Zilla_73, ZoMa_49, Zombie_50,

Genes that have the "Most Annotated" start but do not call it:

-

Genes that do not have the "Most Annotated" start:

- 32HC_71, Abt2graduatex2_59, Amochick_75, Amymech_74, Antsirabe_51, Asis_60, BabyGotBac_61, BayC_60, BlingBling_70, BloominB_74, CherryCola_64, Cloudyecho_52, Clown_76, CoveyB_64, Daegal_76, DeepSoil15_74, Dewey_67, Egi03_63, Ein37_74, Evanesce_73, Eyre_59, Forge_67, Gancho_73, Gezellig_61, Giles_67, Gravaillia_68, HH92_73, Hadrien_71, Hail_67, Halo3_62, Jambalaya_62,

JuJu_82, JustASigh_69, Kinbote_72, Lemuria_53, LilHazelNut_74, Lilbeanie_66, Luke_71, Luna22_67, Lysidious_76, MOOREtheMARYer_53, Maih_59, Mercurio_53, Mischief19_67, NovoPizza_79, OBUpride_73, Pinnie_50, Pipp_79, Portcullis_65, RainyPolka_58, Rem711_70, RogerDodger_66, Salete_60, Savbucketdawg_62, SmokingBunny_63, Stargaze_52, TP1604_60, Togo_62, Twister6_65, Ubuntu_74, Valary_64, VanDeWege_65, Webster2_74, Weirido19_69, Wishmaker_67, Wizard_61, Xkcd426_61, YDN12_59, YangYin_52, YungMoney_63,

Summary by start number:

Start 64:

- Found in 1 of 196 (0.5%) of genes in pham
- Manual Annotations of this start: 1 of 173
- Called 100.0% of time when present
- Phage (with cluster) where this start called: JustASigh_69 (AH),

Start 66:

- Found in 3 of 196 (1.5%) of genes in pham
- No Manual Annotations of this start.
- Called 33.3% of time when present
- Phage (with cluster) where this start called: Weirido19_69 (AH),

Start 79:

- Found in 23 of 196 (11.7%) of genes in pham
- Manual Annotations of this start: 10 of 173
- Called 43.5% of time when present
- Phage (with cluster) where this start called: Daegal_76 (Q), Dewey_67 (Q), Forge_67 (Q), Giles_67 (Q), Gravaillia_68 (Q), Hadrien_71 (Q), Hail_67 (Q), Luke_71 (Q), Luna22_67 (Q), Wishmaker_67 (Q),

Start 89:

- Found in 6 of 196 (3.1%) of genes in pham
- No Manual Annotations of this start.
- Called 16.7% of time when present
- Phage (with cluster) where this start called: YangYin_52 (G5),

Start 92:

- Found in 1 of 196 (0.5%) of genes in pham
- Manual Annotations of this start: 1 of 173
- Called 100.0% of time when present
- Phage (with cluster) where this start called: Lilbeanie_66 (DE5),

Start 95:

- Found in 1 of 196 (0.5%) of genes in pham
- Manual Annotations of this start: 1 of 173
- Called 100.0% of time when present
- Phage (with cluster) where this start called: NovoPizza_79 (Q),

Start 96:

- Found in 2 of 196 (1.0%) of genes in pham
- Manual Annotations of this start: 2 of 173
- Called 100.0% of time when present
- Phage (with cluster) where this start called: Lemuria_53 (G4), Pipp_79 (CV),

Start 99:

- Found in 54 of 196 (27.6%) of genes in pham
- Manual Annotations of this start: 39 of 173
- Called 77.8% of time when present
- Phage (with cluster) where this start called: 32HC_71 (Z), Amochick_75 (Q), Amymech_74 (Q), Antsirabe_51 (G5), BlingBling_70 (CV), BloominB_74 (Q), CherryCola_64 (DC1), Cloudyecho_52 (G3), Clown_76 (DC2), CoveyB_64 (DC1), DeepSoil15_74 (Q), Egi03_63 (DC1), Ein37_74 (Q), Evanesce_73 (Q), Eyre_59 (singleton), Gancho_73 (Q), Gezellig_61 (DC1), HH92_73 (Q), Halo3_62 (DC1), Jambalaya_62 (DC1), JuJu_82 (CV), Kinbote_72 (Q), LilHazelNut_74 (Q), Lysidious_76 (CV), MOOREtheMARYer_53 (G3), Mercurio_53 (G4), OBUpride_73 (Q), Pinnie_50 (G3), Portcullis_65 (DC1), Rem711_70 (Z), RogerDodger_66 (DC1), Savbucketdawg_62 (DC1), SmokingBunny_63 (DC1), Stargaze_52 (G5), Togo_62 (DC1), Twister6_65 (DC1), Ubuntu_74 (Q), Valary_64 (DC1), VanDeWege_65 (DC1), Webster2_74 (Q), Wizard_61 (DC1), YungMoney_63 (DC1),

Start 100:

- Found in 126 of 196 (64.3%) of genes in pham
- Manual Annotations of this start: 108 of 173
- Called 100.0% of time when present
- Phage (with cluster) where this start called: AizenPogi_50 (G1), Angel_51 (G1), Annihilator_51 (G1), Archis_77 (CV), Aroostook_51 (G1), AuntGwenStacy_83 (Y), Avocado_52 (G2), Avrafan_51 (G1), AzulaCat_51 (G1), Azula_80 (CV), BPs_51 (G1), BQuat_51 (G1), Barco_72 (CV), Barkley26_50 (G1), Begonia_73 (CV), Bipper_88 (Y), Blino_77 (CV), Blueberry_79 (CV), BruceB_51 (G1), CLED96_51 (G1), Cambiare_51 (G2), Camri_51 (G1), CaptainKirk2_75 (CV), CarolAnn_76 (CV), CassieYates_51 (G1), Cedasite_51 (G1), Chance64_51 (G1), CheeseSpider_86 (CV), Cherrybomb426_51 (G1), Coleslaw_51 (G1), Cracklewink_89 (Y), Crespo_50 (G1), DMoney_50 (G1), DNAlII_0049 (G1), Darionha_51 (G1), Delian_78 (CV), DingDing_49 (G1), ECartman_49 (G1), Fairfaxidum_77 (CV), Faiyaz_85 (Y), Ferry_74 (CV), FlagStaff_49 (G2), Frokostdame_79 (CV), Frosty24_51 (G1), Gambino_82 (CV), Gideon_52 (G1), GodSpeed_49 (G2), GoldenAsh_50 (G1), Gomashi_50 (G1), Grizzly_51 (G1), Guacamole_73 (CV), Halo_51 (G1), Hilltopfarm_84 (Y), Hitter_73 (CV), Hope_51 (G1), Hotshotbaby7_51 (G1), Jalammah_78 (CV), Jane_51 (G1), JasperJr_73 (CV), Jeilious_50 (G), Jolene_51 (G1), Jolie2_51 (G4), Jonghyun_49 (G1), JorRay_51 (G1), KappaFarmDelta_74 (CV), Kareem_51 (G1), Kasen3_51 (G1), Liefie_50 (G1), LouisV14_53 (G1), MZKinsey_49 (G1), Malachai_73 (CV), Maliketh_49 (G1), Marmie_51 (G1), Melba_74 (CV), Mellie_72 (CV), MintFen_75 (CV), MissRona_80 (CV), Mowgli_51 (G1), Murp_73 (CV), Neoh_50 (G), Obliviate_74 (CV), OctaviousRex_50 (G1), Olga_51 (G1), PCoral7_74 (CV), Pace1224_50 (G2), Paito_53 (G1), Peeb_50 (G1), Periodt_51 (G1), Petra_80 (CV), Phish_50 (G1), Phloodle_49 (G1), Phreak_51 (G1), PhrostedPhlake_81 (CV), PinkYoshi_51 (G1), Plagueis_51 (G1), PrincePatrick_76 (CV), Rabbs_53 (G1), Rattrick_51 (G1), Remy19_51 (G1), Renaissance_51 (G1), Richarlison_49 (G1), Ruriko_49 (G1), Samba_75 (CV), Schiebel_51 (G1), ShaboiShabazz_50 (G1), Sizemore_51 (G1), Sneeze_52 (G1), Sweets_50 (G1), Taheera_49 (G1), Terror_49 (G1), TinaBug_51 (G1), Toast_74 (CV), TomBrady_51 (G1), Typha_83 (Y), UmaThurman_76 (CV), Utz_66 (CV), Walrus_73 (CV), Wendigo_49 (G1), William_77 (CV), Wisp_73 (CV), Wocket_74 (CV), Zarbodnamra_79 (CV), ZiggyZoo_76 (CV), Zilla_73 (CV), ZoMa_49 (G1), Zombie_50 (G1),

Start 105:

- Found in 11 of 196 (5.6%) of genes in pham
- Manual Annotations of this start: 11 of 173
- Called 100.0% of time when present
- Phage (with cluster) where this start called: Abt2graduatex2_59 (BG), Asis_60 (BG), BabyGotBac_61 (BG), BayC_60 (BG), Maih_59 (BG), Mischief19_67 (BG), RainyPolka_58 (BG), Salete_60 (BG), TP1604_60 (BG), Xkcd426_61 (BG), YDN12_59 (BG),

Summary by clusters:

There are 16 clusters represented in this pham: G5, BG, G3, G, G1, AH, G2, singleton, DE5, Q, G4, Y, Z, DC2, CV, DC1,

Info for manual annotations of cluster AH:

- Start number 64 was manually annotated 1 time for cluster AH.

Info for manual annotations of cluster BG:

- Start number 105 was manually annotated 11 times for cluster BG.

Info for manual annotations of cluster CV:

- Start number 96 was manually annotated 1 time for cluster CV.
- Start number 99 was manually annotated 3 times for cluster CV.
- Start number 100 was manually annotated 38 times for cluster CV.

Info for manual annotations of cluster DC1:

- Start number 99 was manually annotated 16 times for cluster DC1.

Info for manual annotations of cluster DC2:

- Start number 99 was manually annotated 1 time for cluster DC2.

Info for manual annotations of cluster DE5:

- Start number 92 was manually annotated 1 time for cluster DE5.

Info for manual annotations of cluster G1:

- Start number 100 was manually annotated 62 times for cluster G1.

Info for manual annotations of cluster G2:

- Start number 100 was manually annotated 3 times for cluster G2.

Info for manual annotations of cluster G3:

- Start number 99 was manually annotated 2 times for cluster G3.

Info for manual annotations of cluster G4:

- Start number 96 was manually annotated 1 time for cluster G4.
- Start number 99 was manually annotated 1 time for cluster G4.

Info for manual annotations of cluster G5:

- Start number 99 was manually annotated 2 times for cluster G5.

Info for manual annotations of cluster Q:

- Start number 79 was manually annotated 10 times for cluster Q.

- Start number 95 was manually annotated 1 time for cluster Q.
- Start number 99 was manually annotated 12 times for cluster Q.

Info for manual annotations of cluster Y:

- Start number 100 was manually annotated 5 times for cluster Y.

Info for manual annotations of cluster Z:

- Start number 99 was manually annotated 1 time for cluster Z.

Gene Information:

Gene: 32HC_71 Start: 43501, Stop: 44121, Start Num: 99

Candidate Starts for 32HC_71:

(Start: 99 @43501 has 39 MA's), (101, 43510), (103, 43513), (109, 43552), (119, 43591), (125, 43657), (128, 43675), (139, 43726), (171, 43900), (189, 43969), (192, 43978),

Gene: Abt2graduatex2_59 Start: 48650, Stop: 49240, Start Num: 105

Candidate Starts for Abt2graduatex2_59:

(Start: 105 @48650 has 11 MA's), (116, 48701), (121, 48725), (123, 48752), (125, 48776), (133, 48809), (136, 48836), (137, 48839), (142, 48869), (148, 48908), (151, 48923), (155, 48950), (156, 48953), (172, 49043), (180, 49064), (189, 49112), (196, 49142), (202, 49178),

Gene: AizenPogi_50 Start: 36914, Stop: 37504, Start Num: 100

Candidate Starts for AizenPogi_50:

(15, 36242), (16, 36245), (29, 36536), (37, 36665), (51, 36737), (70, 36860), (88, 36881), (90, 36887), (Start: 100 @36914 has 108 MA's), (109, 36962), (124, 37058), (130, 37085), (135, 37106), (137, 37112), (141, 37136), (155, 37223), (161, 37253), (166, 37286), (169, 37295), (175, 37334), (183, 37373), (189, 37400), (203, 37469),

Gene: Amochick_75 Start: 48792, Stop: 49403, Start Num: 99

Candidate Starts for Amochick_75:

(43, 48474), (Start: 79 @48711 has 10 MA's), (81, 48720), (91, 48762), (Start: 99 @48792 has 39 MA's), (113, 48873), (124, 48957), (129, 48981), (132, 48990), (137, 49020), (143, 49053), (153, 49119), (160, 49155), (168, 49209), (173, 49233), (175, 49236), (181, 49251), (187, 49278), (189, 49293), (192, 49302), (195, 49320), (198, 49335),

Gene: Amymech_74 Start: 48245, Stop: 48856, Start Num: 99

Candidate Starts for Amymech_74:

(43, 47927), (Start: 79 @48164 has 10 MA's), (81, 48173), (91, 48215), (Start: 99 @48245 has 39 MA's), (113, 48326), (124, 48410), (129, 48434), (132, 48443), (137, 48473), (143, 48506), (153, 48572), (160, 48608), (168, 48662), (173, 48686), (175, 48689), (181, 48704), (187, 48731), (189, 48746), (192, 48755), (195, 48773), (198, 48788),

Gene: Angel_51 Start: 36899, Stop: 37489, Start Num: 100

Candidate Starts for Angel_51:

(15, 36227), (16, 36230), (29, 36521), (37, 36650), (51, 36722), (70, 36845), (88, 36866), (90, 36872), (Start: 100 @36899 has 108 MA's), (109, 36947), (124, 37043), (130, 37070), (135, 37091), (137, 37097), (141, 37121), (155, 37208), (161, 37238), (166, 37271), (169, 37280), (175, 37319), (183, 37358), (189, 37385), (203, 37454),

Gene: Annihilator_51 Start: 36905, Stop: 37495, Start Num: 100

Candidate Starts for Annihilator_51:

(15, 36233), (16, 36236), (29, 36527), (37, 36656), (51, 36728), (70, 36851), (88, 36872), (90, 36878), (Start: 100 @36905 has 108 MA's), (109, 36953), (124, 37049), (130, 37076), (135, 37097), (137, 37103), (141, 37127), (155, 37214), (161, 37244), (166, 37277), (169, 37286), (175, 37325), (183, 37364), (189, 37391), (203, 37460),

Gene: Antsirabe_51 Start: 38179, Stop: 38778, Start Num: 99

Candidate Starts for Antsirabe_51:

(86, 38131), (89, 38140), (Start: 99 @38179 has 39 MA's), (106, 38206), (109, 38227), (126, 38332), (130, 38350), (136, 38374), (137, 38377), (161, 38518), (166, 38551), (167, 38554), (169, 38560), (183, 38635), (189, 38662), (211, 38764),

Gene: Archis_77 Start: 45860, Stop: 46450, Start Num: 100

Candidate Starts for Archis_77:

(Start: 100 @45860 has 108 MA's), (139, 46082), (141, 46094), (142, 46100), (150, 46145), (152, 46163), (155, 46181), (156, 46184), (162, 46223), (163, 46226), (189, 46352),

Gene: Aroostook_51 Start: 36914, Stop: 37504, Start Num: 100

Candidate Starts for Aroostook_51:

(15, 36242), (16, 36245), (29, 36536), (37, 36665), (51, 36737), (70, 36860), (88, 36881), (90, 36887), (Start: 100 @36914 has 108 MA's), (109, 36962), (124, 37058), (130, 37085), (135, 37106), (137, 37112), (141, 37136), (155, 37223), (161, 37253), (166, 37286), (169, 37295), (175, 37334), (183, 37373), (189, 37400), (203, 37469),

Gene: Asis_60 Start: 48756, Stop: 49346, Start Num: 105

Candidate Starts for Asis_60:

(78, 48633), (Start: 105 @48756 has 11 MA's), (116, 48807), (121, 48831), (123, 48858), (125, 48882), (133, 48915), (136, 48942), (137, 48945), (142, 48975), (148, 49014), (151, 49029), (155, 49056), (156, 49059), (172, 49149), (177, 49164), (180, 49170), (189, 49218), (196, 49248), (202, 49284),

Gene: AuntGwenStacy_83 Start: 54897, Stop: 55466, Start Num: 100

Candidate Starts for AuntGwenStacy_83:

(73, 54768), (74, 54771), (80, 54807), (Start: 100 @54897 has 108 MA's), (117, 54963), (128, 55053), (129, 55056), (136, 55086), (137, 55089), (146, 55146), (151, 55170), (153, 55185), (154, 55194), (155, 55197), (156, 55200), (158, 55212), (166, 55260), (171, 55281), (184, 55347), (190, 55368), (197, 55401), (200, 55422), (206, 55434),

Gene: Avocado_52 Start: 39158, Stop: 39742, Start Num: 100

Candidate Starts for Avocado_52:

(37, 38822), (68, 39035), (69, 39038), (Start: 100 @39158 has 108 MA's), (115, 39224), (131, 39332), (136, 39353), (141, 39380), (148, 39422), (154, 39461), (161, 39494), (166, 39527), (174, 39563), (183, 39611), (189, 39638), (202, 39704),

Gene: Avrafan_51 Start: 36914, Stop: 37504, Start Num: 100

Candidate Starts for Avrafan_51:

(15, 36242), (16, 36245), (29, 36536), (37, 36665), (51, 36737), (70, 36860), (88, 36881), (90, 36887), (Start: 100 @36914 has 108 MA's), (109, 36962), (124, 37058), (130, 37085), (135, 37106), (137, 37112), (141, 37136), (155, 37223), (161, 37253), (166, 37286), (169, 37295), (175, 37334), (183, 37373), (189, 37400), (203, 37469),

Gene: Azula_80 Start: 50046, Stop: 50630, Start Num: 100

Candidate Starts for Azula_80:

(1, 48945), (2, 48966), (7, 49161), (12, 49203), (13, 49221), (20, 49341), (30, 49608), (35, 49704), (Start: 100 @50046 has 108 MA's), (116, 50127), (118, 50130), (125, 50199), (136, 50250), (137, 50253), (138, 50256), (145, 50295), (147, 50316), (162, 50403), (169, 50442), (171, 50454), (176, 50463), (189, 50523), (195, 50550),

Gene: AzulaCat_51 Start: 36914, Stop: 37504, Start Num: 100

Candidate Starts for AzulaCat_51:

(15, 36242), (16, 36245), (29, 36536), (37, 36665), (51, 36737), (70, 36860), (88, 36881), (90, 36887), (Start: 100 @36914 has 108 MA's), (109, 36962), (124, 37058), (130, 37085), (135, 37106), (137, 37112), (141, 37136), (155, 37223), (161, 37253), (166, 37286), (169, 37295), (175, 37334), (183, 37373), (189, 37400), (203, 37469),

Gene: BPs_51 Start: 36914, Stop: 37504, Start Num: 100

Candidate Starts for BPs_51:

(15, 36242), (16, 36245), (29, 36536), (37, 36665), (51, 36737), (70, 36860), (88, 36881), (90, 36887), (Start: 100 @36914 has 108 MA's), (109, 36962), (124, 37058), (130, 37085), (135, 37106), (137, 37112), (141, 37136), (155, 37223), (161, 37253), (166, 37286), (169, 37295), (175, 37334), (183, 37373), (189, 37400), (203, 37469),

Gene: BQuat_51 Start: 37351, Stop: 37941, Start Num: 100

Candidate Starts for BQuat_51:

(15, 36679), (16, 36682), (29, 36973), (37, 37102), (51, 37174), (70, 37297), (88, 37318), (90, 37324), (Start: 100 @37351 has 108 MA's), (109, 37399), (124, 37495), (130, 37522), (135, 37543), (137, 37549), (141, 37573), (155, 37660), (161, 37690), (166, 37723), (169, 37732), (175, 37771), (183, 37810), (189, 37837), (203, 37906),

Gene: BabyGotBac_61 Start: 48762, Stop: 49352, Start Num: 105

Candidate Starts for BabyGotBac_61:

(Start: 105 @48762 has 11 MA's), (116, 48813), (121, 48837), (123, 48864), (125, 48888), (133, 48921), (136, 48948), (137, 48951), (142, 48981), (148, 49020), (151, 49035), (155, 49062), (156, 49065), (172, 49155), (177, 49170), (180, 49176), (189, 49224), (196, 49254), (202, 49290),

Gene: Barco_72 Start: 45671, Stop: 46261, Start Num: 100

Candidate Starts for Barco_72:

(52, 45398), (54, 45419), (Start: 100 @45671 has 108 MA's), (136, 45878), (139, 45893), (141, 45905), (142, 45911), (150, 45956), (156, 45995), (162, 46034), (163, 46037), (189, 46163), (204, 46235),

Gene: Barkley26_50 Start: 36819, Stop: 37409, Start Num: 100

Candidate Starts for Barkley26_50:

(22, 36237), (29, 36438), (51, 36639), (70, 36765), (88, 36786), (90, 36792), (Start: 100 @36819 has 108 MA's), (124, 36963), (135, 37011), (137, 37017), (141, 37041), (155, 37128), (161, 37158), (166, 37191), (169, 37200), (175, 37239), (183, 37278), (189, 37305), (203, 37374),

Gene: BayC_60 Start: 48760, Stop: 49350, Start Num: 105

Candidate Starts for BayC_60:

(78, 48637), (Start: 105 @48760 has 11 MA's), (114, 48799), (116, 48811), (121, 48835), (123, 48862), (125, 48886), (133, 48919), (136, 48946), (137, 48949), (142, 48979), (148, 49018), (151, 49033), (155, 49060), (156, 49063), (172, 49153), (177, 49168), (180, 49174), (189, 49222), (196, 49252), (202, 49288),

Gene: Begonia_73 Start: 48471, Stop: 49061, Start Num: 100

Candidate Starts for Begonia_73:

(52, 48171), (54, 48192), (Start: 100 @48471 has 108 MA's), (139, 48693), (141, 48705), (142, 48711), (150, 48756), (152, 48774), (155, 48792), (156, 48795), (162, 48834), (163, 48837), (189, 48963),

Gene: Bipper_88 Start: 56814, Stop: 57383, Start Num: 100

Candidate Starts for Bipper_88:

(33, 56400), (34, 56403), (40, 56436), (42, 56439), (53, 56514), (56, 56547), (58, 56571), (62, 56610), (73, 56688), (74, 56691), (Start: 100 @56814 has 108 MA's), (128, 56970), (129, 56973), (132, 56982), (136, 57003), (137, 57006), (146, 57063), (151, 57087), (154, 57111), (155, 57114), (156, 57117), (158, 57129), (166, 57177), (171, 57198), (184, 57264), (187, 57273), (197, 57318), (198, 57321), (206, 57351),

Gene: BlingBling_70 Start: 45443, Stop: 46036, Start Num: 99

Candidate Starts for BlingBling_70:

(Start: 99 @45443 has 39 MA's), (139, 45668), (141, 45680), (142, 45686), (150, 45731), (152, 45749), (155, 45767), (156, 45770), (163, 45812), (189, 45938), (204, 46010),

Gene: Blino_77 Start: 51275, Stop: 51865, Start Num: 100

Candidate Starts for Blino_77:

(Start: 100 @51275 has 108 MA's), (129, 51452), (139, 51497), (141, 51509), (142, 51515), (150, 51560), (152, 51578), (155, 51596), (156, 51599), (162, 51638), (163, 51641), (189, 51767), (204, 51839),

Gene: BloominB_74 Start: 48245, Stop: 48856, Start Num: 99

Candidate Starts for BloominB_74:

(43, 47927), (Start: 79 @48164 has 10 MA's), (81, 48173), (91, 48215), (Start: 99 @48245 has 39 MA's), (113, 48326), (124, 48410), (129, 48434), (132, 48443), (137, 48473), (143, 48506), (153, 48572), (160, 48608), (168, 48662), (173, 48686), (175, 48689), (181, 48704), (187, 48731), (189, 48746), (192, 48755), (195, 48773), (198, 48788),

Gene: Blueberry_79 Start: 50046, Stop: 50630, Start Num: 100

Candidate Starts for Blueberry_79:

(1, 48945), (2, 48966), (7, 49161), (12, 49203), (13, 49221), (20, 49341), (30, 49608), (35, 49704), (Start: 100 @50046 has 108 MA's), (116, 50127), (118, 50130), (125, 50199), (136, 50250), (137, 50253), (138, 50256), (145, 50295), (147, 50316), (162, 50403), (169, 50442), (171, 50454), (176, 50463), (189, 50523), (195, 50550),

Gene: BruceB_51 Start: 36914, Stop: 37504, Start Num: 100

Candidate Starts for BruceB_51:

(15, 36242), (16, 36245), (29, 36536), (37, 36665), (51, 36737), (70, 36860), (88, 36881), (90, 36887), (Start: 100 @36914 has 108 MA's), (109, 36962), (124, 37058), (130, 37085), (135, 37106), (137, 37112), (141, 37136), (155, 37223), (161, 37253), (166, 37286), (169, 37295), (175, 37334), (183, 37373), (189, 37400), (203, 37469),

Gene: CLED96_51 Start: 36914, Stop: 37504, Start Num: 100

Candidate Starts for CLED96_51:

(15, 36242), (16, 36245), (29, 36536), (37, 36665), (51, 36737), (70, 36860), (88, 36881), (90, 36887), (Start: 100 @36914 has 108 MA's), (109, 36962), (124, 37058), (130, 37085), (135, 37106), (137, 37112), (141, 37136), (155, 37223), (161, 37253), (166, 37286), (169, 37295), (175, 37334), (183, 37373), (189, 37400), (203, 37469),

Gene: Cambiare_51 Start: 38958, Stop: 39542, Start Num: 100

Candidate Starts for Cambiare_51:

(37, 38583), (68, 38796), (69, 38799), (89, 38916), (Start: 100 @38958 has 108 MA's), (115, 39024), (131, 39132), (136, 39153), (137, 39156), (138, 39159), (141, 39180), (148, 39222), (154, 39261), (161, 39294), (166, 39327), (174, 39363), (183, 39411), (189, 39438), (202, 39504),

Gene: Camri_51 Start: 36914, Stop: 37504, Start Num: 100

Candidate Starts for Camri_51:

(15, 36242), (16, 36245), (29, 36536), (37, 36665), (51, 36737), (70, 36860), (88, 36881), (90, 36887), (Start: 100 @36914 has 108 MA's), (109, 36962), (124, 37058), (130, 37085), (135, 37106), (137, 37112), (141, 37136), (155, 37223), (161, 37253), (166, 37286), (169, 37295), (175, 37334), (183, 37373), (189, 37400), (203, 37469),

Gene: CaptainKirk2_75 Start: 45228, Stop: 45818, Start Num: 100

Candidate Starts for CaptainKirk2_75:

(52, 44955), (54, 44976), (Start: 100 @45228 has 108 MA's), (136, 45435), (139, 45450), (141, 45462), (142, 45468), (150, 45513), (152, 45531), (155, 45549), (156, 45552), (162, 45591), (163, 45594), (189, 45720), (204, 45792),

Gene: CarolAnn_76 Start: 51274, Stop: 51864, Start Num: 100

Candidate Starts for CarolAnn_76:

(Start: 100 @51274 has 108 MA's), (129, 51451), (139, 51496), (141, 51508), (142, 51514), (150, 51559), (152, 51577), (155, 51595), (156, 51598), (162, 51637), (163, 51640), (189, 51766), (204, 51838),

Gene: CassieYates_51 Start: 36914, Stop: 37504, Start Num: 100

Candidate Starts for CassieYates_51:

(15, 36242), (16, 36245), (29, 36536), (37, 36665), (51, 36737), (70, 36860), (88, 36881), (90, 36887), (Start: 100 @36914 has 108 MA's), (109, 36962), (124, 37058), (130, 37085), (135, 37106), (137, 37112), (141, 37136), (155, 37223), (161, 37253), (166, 37286), (169, 37295), (175, 37334), (183, 37373), (189, 37400), (203, 37469),

Gene: Cedasite_51 Start: 36914, Stop: 37504, Start Num: 100

Candidate Starts for Cedasite_51:

(15, 36242), (16, 36245), (29, 36536), (37, 36665), (51, 36737), (70, 36860), (88, 36881), (90, 36887), (Start: 100 @36914 has 108 MA's), (109, 36962), (124, 37058), (130, 37085), (135, 37106), (137, 37112), (141, 37136), (155, 37223), (161, 37253), (166, 37286), (169, 37295), (175, 37334), (183, 37373), (189, 37400), (203, 37469),

Gene: Chance64_51 Start: 36914, Stop: 37504, Start Num: 100

Candidate Starts for Chance64_51:

(15, 36242), (16, 36245), (29, 36536), (37, 36665), (51, 36737), (70, 36860), (88, 36881), (90, 36887), (Start: 100 @36914 has 108 MA's), (109, 36962), (124, 37058), (130, 37085), (135, 37106), (137, 37112), (141, 37136), (155, 37223), (161, 37253), (166, 37286), (169, 37295), (175, 37334), (183, 37373), (189, 37400), (203, 37469),

Gene: CheeseSpider_86 Start: 49892, Stop: 50476, Start Num: 100

Candidate Starts for CheeseSpider_86:

(Start: 100 @49892 has 108 MA's), (112, 49958), (116, 49973), (125, 50045), (137, 50099), (138, 50102), (145, 50141), (147, 50162), (162, 50249), (169, 50288), (171, 50300), (176, 50309), (189, 50369),

Gene: CherryCola_64 Start: 47836, Stop: 48438, Start Num: 99

Candidate Starts for CherryCola_64:

(Start: 99 @47836 has 39 MA's), (144, 48076), (156, 48154), (159, 48169), (166, 48214), (171, 48235), (185, 48304), (188, 48313), (195, 48343), (197, 48355), (212, 48421),

Gene: Cherrybomb426_51 Start: 36914, Stop: 37504, Start Num: 100

Candidate Starts for Cherrybomb426_51:

(15, 36242), (16, 36245), (29, 36536), (37, 36665), (51, 36737), (70, 36860), (88, 36881), (90, 36887), (Start: 100 @36914 has 108 MA's), (109, 36962), (124, 37058), (130, 37085), (135, 37106), (137, 37112), (141, 37136), (155, 37223), (161, 37253), (166, 37286), (169, 37295), (175, 37334), (183, 37373), (189, 37400), (203, 37469),

Gene: Cloudyecho_52 Start: 38916, Stop: 39503, Start Num: 99

Candidate Starts for Cloudyecho_52:

(59, 38832), (65, 38877), (Start: 99 @38916 has 39 MA's), (109, 38964), (126, 39069), (136, 39111), (137, 39114), (166, 39288), (167, 39291), (183, 39372), (189, 39399), (193, 39414), (207, 39486),

Gene: Clown_76 Start: 51335, Stop: 51934, Start Num: 99

Candidate Starts for Clown_76:

(77, 51254), (Start: 99 @51335 has 39 MA's), (104, 51353), (153, 51635), (157, 51656), (159, 51665), (171, 51731), (188, 51809), (190, 51818), (195, 51839), (197, 51851), (212, 51917),

Gene: Coleslaw_51 Start: 37351, Stop: 37941, Start Num: 100

Candidate Starts for Coleslaw_51:

(15, 36679), (16, 36682), (29, 36973), (37, 37102), (51, 37174), (70, 37297), (88, 37318), (90, 37324), (Start: 100 @37351 has 108 MA's), (109, 37399), (124, 37495), (130, 37522), (135, 37543), (137, 37549), (141, 37573), (155, 37660), (161, 37690), (166, 37723), (169, 37732), (175, 37771), (183, 37810), (189, 37837), (203, 37906),

Gene: CoveyB_64 Start: 46929, Stop: 47531, Start Num: 99

Candidate Starts for CoveyB_64:

(Start: 99 @46929 has 39 MA's), (144, 47169), (156, 47247), (159, 47262), (166, 47307), (171, 47328), (185, 47397), (186, 47400), (188, 47406), (195, 47436), (197, 47448), (212, 47514),

Gene: Cracklewink_89 Start: 56009, Stop: 56578, Start Num: 100

Candidate Starts for Cracklewink_89:

(86, 55973), (Start: 100 @56009 has 108 MA's), (128, 56165), (129, 56168), (132, 56177), (136, 56198), (137, 56201), (146, 56258), (151, 56282), (154, 56306), (155, 56309), (156, 56312), (158, 56324), (166, 56372), (171, 56393), (184, 56459), (187, 56468), (197, 56513), (198, 56516), (206, 56546),

Gene: Crespo_50 Start: 36915, Stop: 37505, Start Num: 100

Candidate Starts for Crespo_50:

(15, 36243), (16, 36246), (29, 36537), (37, 36666), (51, 36738), (70, 36861), (88, 36882), (90, 36888), (Start: 100 @36915 has 108 MA's), (109, 36963), (124, 37059), (130, 37086), (135, 37107), (137, 37113), (141, 37137), (155, 37224), (161, 37254), (166, 37287), (169, 37296), (175, 37335), (183, 37374), (189, 37401), (203, 37470),

Gene: DMoney_50 Start: 36914, Stop: 37504, Start Num: 100

Candidate Starts for DMoney_50:

(15, 36242), (16, 36245), (29, 36536), (37, 36665), (51, 36737), (70, 36860), (88, 36881), (90, 36887), (Start: 100 @36914 has 108 MA's), (109, 36962), (124, 37058), (130, 37085), (135, 37106), (137, 37112), (141, 37136), (155, 37223), (161, 37253), (166, 37286), (169, 37295), (175, 37334), (183, 37373), (189, 37400), (203, 37469),

Gene: DNAIII_0049 Start: 35449, Stop: 36039, Start Num: 100

Candidate Starts for DNAIII_0049:

(14, 34744), (15, 34777), (16, 34780), (29, 35071), (37, 35200), (51, 35272), (70, 35395), (88, 35416), (90, 35422), (Start: 100 @35449 has 108 MA's), (109, 35497), (124, 35593), (130, 35620), (135, 35641), (137, 35647), (141, 35671), (155, 35758), (161, 35788), (166, 35821), (169, 35830), (175, 35869), (183, 35908), (189, 35935), (203, 36004),

Gene: Daegal_76 Start: 49270, Stop: 49962, Start Num: 79

Candidate Starts for Daegal_76:

(43, 49033), (Start: 79 @49270 has 10 MA's), (81, 49279), (91, 49321), (Start: 99 @49351 has 39 MA's), (113, 49432), (124, 49516), (129, 49540), (132, 49549), (137, 49579), (143, 49612), (153, 49678), (160, 49714), (168, 49768), (173, 49792), (175, 49795), (181, 49810), (187, 49837), (189, 49852), (192, 49861), (195, 49879), (198, 49894),

Gene: Darionha_51 Start: 36914, Stop: 37504, Start Num: 100

Candidate Starts for Darionha_51:

(15, 36242), (16, 36245), (29, 36536), (37, 36665), (51, 36737), (70, 36860), (88, 36881), (90, 36887), (Start: 100 @36914 has 108 MA's), (109, 36962), (124, 37058), (130, 37085), (135, 37106), (137, 37112), (141, 37136), (155, 37223), (161, 37253), (166, 37286), (169, 37295), (175, 37334), (183, 37373), (189, 37400), (203, 37469),

Gene: DeepSoil15_74 Start: 48245, Stop: 48856, Start Num: 99

Candidate Starts for DeepSoil15_74:

(43, 47927), (Start: 79 @48164 has 10 MA's), (81, 48173), (91, 48215), (Start: 99 @48245 has 39 MA's), (113, 48326), (124, 48410), (129, 48434), (132, 48443), (137, 48473), (143, 48506), (153, 48572), (160, 48608), (168, 48662), (173, 48686), (175, 48689), (181, 48704), (187, 48731), (189, 48746), (192, 48755), (195, 48773), (198, 48788),

Gene: Delian_78 Start: 45226, Stop: 45816, Start Num: 100

Candidate Starts for Delian_78:

(52, 44953), (54, 44974), (Start: 100 @45226 has 108 MA's), (136, 45433), (139, 45448), (141, 45460), (142, 45466), (150, 45511), (152, 45529), (155, 45547), (156, 45550), (162, 45589), (163, 45592), (189, 45718), (204, 45790),

Gene: Dewey_67 Start: 48164, Stop: 48856, Start Num: 79

Candidate Starts for Dewey_67:

(43, 47927), (Start: 79 @48164 has 10 MA's), (81, 48173), (91, 48215), (Start: 99 @48245 has 39 MA's), (113, 48326), (124, 48410), (129, 48434), (132, 48443), (137, 48473), (143, 48506), (153, 48572), (160, 48608), (168, 48662), (173, 48686), (175, 48689), (181, 48704), (187, 48731), (189, 48746), (192, 48755), (195, 48773), (198, 48788),

Gene: DingDing_49 Start: 36914, Stop: 37504, Start Num: 100

Candidate Starts for DingDing_49:

(15, 36242), (16, 36245), (29, 36536), (37, 36665), (51, 36737), (70, 36860), (88, 36881), (90, 36887), (Start: 100 @36914 has 108 MA's), (109, 36962), (124, 37058), (130, 37085), (135, 37106), (137, 37112), (141, 37136), (155, 37223), (161, 37253), (166, 37286), (169, 37295), (175, 37334), (183, 37373), (189, 37400), (203, 37469),

Gene: ECartman_49 Start: 36914, Stop: 37504, Start Num: 100

Candidate Starts for ECartman_49:

(15, 36242), (16, 36245), (29, 36536), (37, 36665), (51, 36737), (70, 36860), (88, 36881), (90, 36887), (Start: 100 @36914 has 108 MA's), (109, 36962), (124, 37058), (130, 37085), (135, 37106), (137, 37112), (141, 37136), (155, 37223), (161, 37253), (166, 37286), (169, 37295), (175, 37334), (183,

37373), (189, 37400), (203, 37469),

Gene: Egi03_63 Start: 46955, Stop: 47554, Start Num: 99

Candidate Starts for Egi03_63:

(Start: 99 @46955 has 39 MA's), (142, 47189), (159, 47285), (166, 47330), (178, 47387), (185, 47420), (188, 47429), (195, 47459), (197, 47471), (205, 47507), (212, 47537),

Gene: Ein37_74 Start: 48245, Stop: 48856, Start Num: 99

Candidate Starts for Ein37_74:

(43, 47927), (Start: 79 @48164 has 10 MA's), (81, 48173), (91, 48215), (Start: 99 @48245 has 39 MA's), (113, 48326), (124, 48410), (129, 48434), (132, 48443), (137, 48473), (143, 48506), (153, 48572), (160, 48608), (168, 48662), (173, 48686), (175, 48689), (181, 48704), (187, 48731), (189, 48746), (192, 48755), (195, 48773), (198, 48788),

Gene: Evanesce_73 Start: 48245, Stop: 48856, Start Num: 99

Candidate Starts for Evanesce_73:

(43, 47927), (Start: 79 @48164 has 10 MA's), (81, 48173), (91, 48215), (Start: 99 @48245 has 39 MA's), (113, 48326), (124, 48410), (129, 48434), (132, 48443), (137, 48473), (143, 48506), (153, 48572), (160, 48608), (168, 48662), (173, 48686), (175, 48689), (181, 48704), (187, 48731), (189, 48746), (192, 48755), (195, 48773), (198, 48788),

Gene: Eyre_59 Start: 38628, Stop: 39218, Start Num: 99

Candidate Starts for Eyre_59:

(76, 38547), (83, 38586), (Start: 99 @38628 has 39 MA's), (103, 38640), (120, 38730), (129, 38805), (132, 38814), (136, 38835), (139, 38850), (141, 38862), (171, 39042), (189, 39117), (209, 39207),

Gene: Fairfaxidum_77 Start: 47701, Stop: 48291, Start Num: 100

Candidate Starts for Fairfaxidum_77:

(Start: 100 @47701 has 108 MA's), (139, 47923), (141, 47935), (142, 47941), (150, 47986), (163, 48067), (189, 48193), (197, 48232),

Gene: Faiyaz_85 Start: 54903, Stop: 55472, Start Num: 100

Candidate Starts for Faiyaz_85:

(73, 54774), (74, 54777), (80, 54813), (Start: 100 @54903 has 108 MA's), (117, 54969), (128, 55059), (129, 55062), (136, 55092), (137, 55095), (146, 55152), (151, 55176), (153, 55191), (154, 55200), (155, 55203), (156, 55206), (158, 55218), (166, 55266), (171, 55287), (184, 55353), (190, 55374), (197, 55407), (200, 55428), (206, 55440),

Gene: Fenry_74 Start: 47299, Stop: 47889, Start Num: 100

Candidate Starts for Fenry_74:

(Start: 100 @47299 has 108 MA's), (139, 47521), (141, 47533), (142, 47539), (150, 47584), (152, 47602), (155, 47620), (156, 47623), (162, 47662), (163, 47665), (189, 47791),

Gene: FlagStaff_49 Start: 37465, Stop: 38049, Start Num: 100

Candidate Starts for FlagStaff_49:

(Start: 100 @37465 has 108 MA's), (115, 37531), (131, 37639), (136, 37660), (137, 37663), (138, 37666), (141, 37687), (154, 37768), (161, 37801), (166, 37834), (169, 37843), (183, 37918), (189, 37945),

Gene: Forge_67 Start: 48164, Stop: 48856, Start Num: 79

Candidate Starts for Forge_67:

(43, 47927), (Start: 79 @48164 has 10 MA's), (81, 48173), (91, 48215), (Start: 99 @48245 has 39 MA's), (113, 48326), (124, 48410), (129, 48434), (132, 48443), (137, 48473), (143, 48506), (153,

48572), (160, 48608), (168, 48662), (173, 48686), (175, 48689), (181, 48704), (187, 48731), (189, 48746), (192, 48755), (195, 48773), (198, 48788),

Gene: Frokostdame_79 Start: 49511, Stop: 50095, Start Num: 100

Candidate Starts for Frokostdame_79:

(35, 49172), (Start: 100 @49511 has 108 MA's), (116, 49592), (118, 49595), (125, 49664), (136, 49715), (137, 49718), (138, 49721), (145, 49760), (147, 49781), (162, 49868), (165, 49892), (169, 49907), (171, 49919), (176, 49928), (189, 49988), (209, 50078),

Gene: Frosty24_51 Start: 36914, Stop: 37504, Start Num: 100

Candidate Starts for Frosty24_51:

(15, 36242), (16, 36245), (29, 36536), (37, 36665), (51, 36737), (70, 36860), (88, 36881), (90, 36887), (Start: 100 @36914 has 108 MA's), (109, 36962), (124, 37058), (130, 37085), (135, 37106), (137, 37112), (141, 37136), (155, 37223), (161, 37253), (166, 37286), (169, 37295), (175, 37334), (183, 37373), (189, 37400), (203, 37469),

Gene: Gambino_82 Start: 50046, Stop: 50630, Start Num: 100

Candidate Starts for Gambino_82:

(1, 48945), (2, 48966), (7, 49161), (12, 49203), (13, 49221), (20, 49341), (30, 49608), (35, 49704), (Start: 100 @50046 has 108 MA's), (116, 50127), (118, 50130), (125, 50199), (136, 50250), (137, 50253), (138, 50256), (145, 50295), (147, 50316), (162, 50403), (169, 50442), (171, 50454), (176, 50463), (189, 50523), (195, 50550),

Gene: Gancho_73 Start: 48020, Stop: 48631, Start Num: 99

Candidate Starts for Gancho_73:

(Start: 79 @47939 has 10 MA's), (81, 47948), (91, 47990), (Start: 99 @48020 has 39 MA's), (113, 48101), (124, 48185), (129, 48209), (132, 48218), (137, 48248), (143, 48281), (153, 48347), (160, 48383), (168, 48437), (173, 48461), (175, 48464), (181, 48479), (187, 48506), (189, 48521), (192, 48530), (195, 48548), (198, 48563),

Gene: Gezellig_61 Start: 47082, Stop: 47684, Start Num: 99

Candidate Starts for Gezellig_61:

(Start: 99 @47082 has 39 MA's), (144, 47322), (156, 47400), (159, 47415), (166, 47460), (171, 47481), (185, 47550), (186, 47553), (188, 47559), (195, 47589), (197, 47601), (212, 47667),

Gene: Gideon_52 Start: 37361, Stop: 37951, Start Num: 100

Candidate Starts for Gideon_52:

(15, 36689), (16, 36692), (29, 36983), (37, 37112), (51, 37184), (70, 37307), (88, 37328), (90, 37334), (Start: 100 @37361 has 108 MA's), (109, 37409), (124, 37505), (130, 37532), (135, 37553), (137, 37559), (141, 37583), (155, 37670), (161, 37700), (166, 37733), (169, 37742), (175, 37781), (183, 37820), (189, 37847), (203, 37916),

Gene: Giles_67 Start: 48164, Stop: 48856, Start Num: 79

Candidate Starts for Giles_67:

(43, 47927), (Start: 79 @48164 has 10 MA's), (81, 48173), (91, 48215), (Start: 99 @48245 has 39 MA's), (113, 48326), (124, 48410), (129, 48434), (132, 48443), (137, 48473), (143, 48506), (153, 48572), (160, 48608), (168, 48662), (173, 48686), (175, 48689), (181, 48704), (187, 48731), (189, 48746), (192, 48755), (195, 48773), (198, 48788),

Gene: GodSpeed_49 Start: 37283, Stop: 37867, Start Num: 100

Candidate Starts for GodSpeed_49:

(89, 37244), (Start: 100 @37283 has 108 MA's), (115, 37349), (131, 37457), (136, 37478), (137, 37481), (138, 37484), (141, 37505), (154, 37586), (161, 37619), (166, 37652), (170, 37664), (183,

37736), (189, 37763),

Gene: GoldenAsh_50 Start: 36899, Stop: 37489, Start Num: 100

Candidate Starts for GoldenAsh_50:

(15, 36227), (16, 36230), (29, 36521), (37, 36650), (51, 36722), (70, 36845), (88, 36866), (90, 36872), (Start: 100 @36899 has 108 MA's), (109, 36947), (124, 37043), (130, 37070), (135, 37091), (137, 37097), (141, 37121), (155, 37208), (161, 37238), (166, 37271), (169, 37280), (175, 37319), (183, 37358), (189, 37385), (203, 37454),

Gene: Gomashi_50 Start: 36915, Stop: 37505, Start Num: 100

Candidate Starts for Gomashi_50:

(15, 36243), (16, 36246), (29, 36537), (37, 36666), (51, 36738), (70, 36861), (88, 36882), (90, 36888), (Start: 100 @36915 has 108 MA's), (109, 36963), (124, 37059), (130, 37086), (135, 37107), (137, 37113), (141, 37137), (155, 37224), (161, 37254), (166, 37287), (169, 37296), (175, 37335), (183, 37374), (189, 37401), (203, 37470),

Gene: Gravaillia_68 Start: 48220, Stop: 48912, Start Num: 79

Candidate Starts for Gravaillia_68:

(43, 47983), (Start: 79 @48220 has 10 MA's), (81, 48229), (91, 48271), (Start: 99 @48301 has 39 MA's), (113, 48382), (124, 48466), (129, 48490), (132, 48499), (137, 48529), (143, 48562), (153, 48628), (160, 48664), (168, 48718), (173, 48742), (175, 48745), (181, 48760), (187, 48787), (189, 48802), (192, 48811), (195, 48829), (198, 48844),

Gene: Grizzly_51 Start: 36986, Stop: 37576, Start Num: 100

Candidate Starts for Grizzly_51:

(29, 36608), (51, 36809), (70, 36932), (88, 36953), (90, 36959), (Start: 100 @36986 has 108 MA's), (124, 37130), (135, 37178), (137, 37184), (141, 37208), (155, 37295), (161, 37325), (166, 37358), (169, 37367), (175, 37406), (183, 37445), (189, 37472), (203, 37541),

Gene: Guacamole_73 Start: 46646, Stop: 47236, Start Num: 100

Candidate Starts for Guacamole_73:

(52, 46373), (54, 46394), (Start: 100 @46646 has 108 MA's), (136, 46853), (139, 46868), (141, 46880), (142, 46886), (150, 46931), (152, 46949), (155, 46967), (156, 46970), (162, 47009), (163, 47012), (189, 47138), (204, 47210),

Gene: HH92_73 Start: 48245, Stop: 48856, Start Num: 99

Candidate Starts for HH92_73:

(43, 47927), (Start: 79 @48164 has 10 MA's), (81, 48173), (91, 48215), (Start: 99 @48245 has 39 MA's), (113, 48326), (124, 48410), (129, 48434), (132, 48443), (137, 48473), (143, 48506), (153, 48572), (160, 48608), (168, 48662), (173, 48686), (175, 48689), (181, 48704), (187, 48731), (189, 48746), (192, 48755), (195, 48773), (198, 48788),

Gene: Hadrien_71 Start: 48164, Stop: 48856, Start Num: 79

Candidate Starts for Hadrien_71:

(43, 47927), (Start: 79 @48164 has 10 MA's), (81, 48173), (91, 48215), (Start: 99 @48245 has 39 MA's), (113, 48326), (124, 48410), (129, 48434), (132, 48443), (137, 48473), (143, 48506), (153, 48572), (160, 48608), (168, 48662), (173, 48686), (175, 48689), (181, 48704), (187, 48731), (189, 48746), (192, 48755), (195, 48773), (198, 48788),

Gene: Hail_67 Start: 48164, Stop: 48856, Start Num: 79

Candidate Starts for Hail_67:

(43, 47927), (Start: 79 @48164 has 10 MA's), (81, 48173), (91, 48215), (Start: 99 @48245 has 39 MA's), (113, 48326), (124, 48410), (129, 48434), (132, 48443), (137, 48473), (143, 48506), (153,

48572), (160, 48608), (168, 48662), (173, 48686), (175, 48689), (181, 48704), (187, 48731), (189, 48746), (192, 48755), (195, 48773), (198, 48788),

Gene: Halo_51 Start: 36909, Stop: 37499, Start Num: 100

Candidate Starts for Halo_51:

(15, 36237), (16, 36240), (29, 36531), (37, 36660), (51, 36732), (70, 36855), (88, 36876), (90, 36882), (Start: 100 @36909 has 108 MA's), (109, 36957), (124, 37053), (130, 37080), (135, 37101), (137, 37107), (141, 37131), (155, 37218), (161, 37248), (166, 37281), (169, 37290), (175, 37329), (183, 37368), (189, 37395), (203, 37464),

Gene: Halo3_62 Start: 47667, Stop: 48269, Start Num: 99

Candidate Starts for Halo3_62:

(Start: 99 @47667 has 39 MA's), (144, 47907), (156, 47985), (159, 48000), (166, 48045), (171, 48066), (185, 48135), (186, 48138), (188, 48144), (195, 48174), (197, 48186), (205, 48222), (212, 48252),

Gene: Hilltopfarm_84 Start: 54597, Stop: 55166, Start Num: 100

Candidate Starts for Hilltopfarm_84:

(73, 54468), (74, 54471), (80, 54507), (Start: 100 @54597 has 108 MA's), (117, 54663), (128, 54753), (129, 54756), (136, 54786), (137, 54789), (146, 54846), (151, 54870), (153, 54885), (154, 54894), (155, 54897), (156, 54900), (158, 54912), (166, 54960), (171, 54981), (184, 55047), (190, 55068), (197, 55101), (200, 55122), (206, 55134),

Gene: Hitter_73 Start: 44905, Stop: 45495, Start Num: 100

Candidate Starts for Hitter_73:

(Start: 100 @44905 has 108 MA's), (139, 45127), (141, 45139), (142, 45145), (150, 45190), (152, 45208), (155, 45226), (156, 45229), (162, 45268), (163, 45271), (189, 45397),

Gene: Hope_51 Start: 36914, Stop: 37504, Start Num: 100

Candidate Starts for Hope_51:

(15, 36242), (16, 36245), (29, 36536), (37, 36665), (51, 36737), (70, 36860), (88, 36881), (90, 36887), (Start: 100 @36914 has 108 MA's), (109, 36962), (124, 37058), (130, 37085), (135, 37106), (137, 37112), (141, 37136), (155, 37223), (161, 37253), (166, 37286), (169, 37295), (175, 37334), (183, 37373), (189, 37400), (203, 37469),

Gene: Hotshotbaby7_51 Start: 36914, Stop: 37504, Start Num: 100

Candidate Starts for Hotshotbaby7_51:

(15, 36242), (16, 36245), (29, 36536), (37, 36665), (51, 36737), (70, 36860), (88, 36881), (90, 36887), (Start: 100 @36914 has 108 MA's), (109, 36962), (124, 37058), (130, 37085), (135, 37106), (137, 37112), (141, 37136), (155, 37223), (161, 37253), (166, 37286), (169, 37295), (175, 37334), (183, 37373), (189, 37400), (203, 37469),

Gene: Jalammah_78 Start: 48811, Stop: 49401, Start Num: 100

Candidate Starts for Jalammah_78:

(Start: 100 @48811 has 108 MA's), (139, 49033), (141, 49045), (142, 49051), (150, 49096), (152, 49114), (155, 49132), (156, 49135), (162, 49174), (163, 49177), (189, 49303), (204, 49375),

Gene: Jambalaya_62 Start: 46938, Stop: 47537, Start Num: 99

Candidate Starts for Jambalaya_62:

(3, 45984), (4, 45990), (5, 45996), (6, 46002), (8, 46008), (10, 46032), (60, 46710), (Start: 99 @46938 has 39 MA's), (142, 47172), (159, 47268), (166, 47313), (178, 47370), (185, 47403), (188, 47412), (195, 47442), (197, 47454), (212, 47520),

Gene: Jane_51 Start: 36914, Stop: 37504, Start Num: 100

Candidate Starts for Jane_51:

(15, 36242), (16, 36245), (29, 36536), (37, 36665), (51, 36737), (70, 36860), (88, 36881), (90, 36887), (Start: 100 @36914 has 108 MA's), (109, 36962), (124, 37058), (130, 37085), (135, 37106), (137, 37112), (141, 37136), (155, 37223), (161, 37253), (166, 37286), (169, 37295), (175, 37334), (183, 37373), (189, 37400), (203, 37469),

Gene: JasperJr_73 Start: 46646, Stop: 47236, Start Num: 100

Candidate Starts for JasperJr_73:

(52, 46373), (54, 46394), (Start: 100 @46646 has 108 MA's), (136, 46853), (139, 46868), (141, 46880), (142, 46886), (150, 46931), (152, 46949), (155, 46967), (156, 46970), (162, 47009), (163, 47012), (189, 47138), (204, 47210),

Gene: Jeilious_50 Start: 36913, Stop: 37503, Start Num: 100

Candidate Starts for Jeilious_50:

(15, 36241), (16, 36244), (29, 36535), (37, 36664), (51, 36736), (70, 36859), (88, 36880), (90, 36886), (Start: 100 @36913 has 108 MA's), (109, 36961), (124, 37057), (130, 37084), (135, 37105), (137, 37111), (141, 37135), (155, 37222), (161, 37252), (166, 37285), (169, 37294), (175, 37333), (183, 37372), (189, 37399), (203, 37468),

Gene: Jolene_51 Start: 37076, Stop: 37666, Start Num: 100

Candidate Starts for Jolene_51:

(Start: 100 @37076 has 108 MA's), (109, 37124), (124, 37220), (135, 37268), (137, 37274), (141, 37298), (155, 37385), (161, 37415), (166, 37448), (169, 37457), (175, 37496), (183, 37535), (189, 37562), (203, 37631),

Gene: Jolie2_51 Start: 38020, Stop: 38622, Start Num: 100

Candidate Starts for Jolie2_51:

(50, 37849), (51, 37858), (57, 37903), (61, 37936), (Start: 100 @38020 has 108 MA's), (124, 38164), (137, 38218), (151, 38302), (155, 38329), (166, 38392), (169, 38401), (183, 38491), (189, 38518),

Gene: Jonghyun_49 Start: 36914, Stop: 37504, Start Num: 100

Candidate Starts for Jonghyun_49:

(15, 36242), (16, 36245), (29, 36536), (37, 36665), (51, 36737), (70, 36860), (88, 36881), (90, 36887), (Start: 100 @36914 has 108 MA's), (109, 36962), (124, 37058), (130, 37085), (135, 37106), (137, 37112), (141, 37136), (155, 37223), (161, 37253), (166, 37286), (169, 37295), (175, 37334), (183, 37373), (189, 37400), (203, 37469),

Gene: JorRay_51 Start: 36914, Stop: 37504, Start Num: 100

Candidate Starts for JorRay_51:

(15, 36242), (16, 36245), (29, 36536), (37, 36665), (51, 36737), (70, 36860), (88, 36881), (90, 36887), (Start: 100 @36914 has 108 MA's), (109, 36962), (124, 37058), (130, 37085), (135, 37106), (137, 37112), (141, 37136), (155, 37223), (161, 37253), (166, 37286), (169, 37295), (175, 37334), (183, 37373), (189, 37400), (203, 37469),

Gene: JuJu_82 Start: 50269, Stop: 50862, Start Num: 99

Candidate Starts for JuJu_82:

(Start: 99 @50269 has 39 MA's), (139, 50494), (141, 50506), (142, 50512), (150, 50557), (152, 50575), (156, 50596), (163, 50638), (189, 50764), (204, 50836),

Gene: JustASigh_69 Start: 44678, Stop: 45514, Start Num: 64

Candidate Starts for JustASigh_69:

(Start: 64 @44678 has 1 MA's), (87, 44810), (97, 44855), (102, 44867), (125, 45023), (129, 45044), (143, 45128), (150, 45170), (151, 45179), (164, 45257), (179, 45365), (180, 45368), (189, 45416),

(192, 45425), (208, 45503),

Gene: KappaFarmDelta_74 Start: 46258, Stop: 46848, Start Num: 100

Candidate Starts for KappaFarmDelta_74:

(Start: 100 @46258 has 108 MA's), (139, 46480), (141, 46492), (142, 46498), (150, 46543), (152, 46561), (155, 46579), (156, 46582), (162, 46621), (163, 46624), (189, 46750),

Gene: Kareem_51 Start: 36914, Stop: 37504, Start Num: 100

Candidate Starts for Kareem_51:

(15, 36242), (16, 36245), (29, 36536), (37, 36665), (51, 36737), (70, 36860), (88, 36881), (90, 36887), (Start: 100 @36914 has 108 MA's), (109, 36962), (124, 37058), (130, 37085), (135, 37106), (137, 37112), (141, 37136), (155, 37223), (161, 37253), (166, 37286), (169, 37295), (175, 37334), (183, 37373), (189, 37400), (203, 37469),

Gene: Kasen3_51 Start: 36900, Stop: 37490, Start Num: 100

Candidate Starts for Kasen3_51:

(15, 36228), (16, 36231), (29, 36522), (37, 36651), (51, 36723), (70, 36846), (88, 36867), (90, 36873), (Start: 100 @36900 has 108 MA's), (109, 36948), (124, 37044), (130, 37071), (135, 37092), (137, 37098), (141, 37122), (155, 37209), (161, 37239), (166, 37272), (169, 37281), (175, 37320), (183, 37359), (189, 37386), (203, 37455),

Gene: Kinbote_72 Start: 48245, Stop: 48856, Start Num: 99

Candidate Starts for Kinbote_72:

(43, 47927), (Start: 79 @48164 has 10 MA's), (81, 48173), (91, 48215), (Start: 99 @48245 has 39 MA's), (113, 48326), (124, 48410), (129, 48434), (132, 48443), (137, 48473), (143, 48506), (153, 48572), (160, 48608), (168, 48662), (173, 48686), (175, 48689), (181, 48704), (187, 48731), (189, 48746), (192, 48755), (195, 48773), (198, 48788),

Gene: Lemuria_53 Start: 39211, Stop: 39813, Start Num: 96

Candidate Starts for Lemuria_53:

(63, 39169), (Start: 96 @39211 has 2 MA's), (115, 39277), (124, 39355), (137, 39409), (141, 39433), (151, 39493), (155, 39520), (161, 39550), (166, 39583), (169, 39592), (189, 39709),

Gene: Liefie_50 Start: 37020, Stop: 37610, Start Num: 100

Candidate Starts for Liefie_50:

(38, 36801), (39, 36804), (Start: 100 @37020 has 108 MA's), (109, 37068), (124, 37164), (130, 37191), (135, 37212), (137, 37218), (141, 37242), (155, 37329), (161, 37359), (166, 37392), (169, 37401), (175, 37440), (183, 37479), (189, 37506), (203, 37575),

Gene: LilHazelnut_74 Start: 48245, Stop: 48856, Start Num: 99

Candidate Starts for LilHazelnut_74:

(43, 47927), (Start: 79 @48164 has 10 MA's), (81, 48173), (91, 48215), (Start: 99 @48245 has 39 MA's), (113, 48326), (124, 48410), (129, 48434), (132, 48443), (137, 48473), (143, 48506), (153, 48572), (160, 48608), (168, 48662), (173, 48686), (175, 48689), (181, 48704), (187, 48731), (189, 48746), (192, 48755), (195, 48773), (198, 48788),

Gene: Lilbeanie_66 Start: 45819, Stop: 46490, Start Num: 92

Candidate Starts for Lilbeanie_66:

(82, 45774), (90, 45807), (Start: 92 @45819 has 1 MA's), (137, 46077), (140, 46098), (142, 46107), (154, 46188), (173, 46287), (179, 46317), (189, 46368), (199, 46422), (213, 46482),

Gene: LouisV14_53 Start: 39179, Stop: 39769, Start Num: 100

Candidate Starts for LouisV14_53:

(15, 38507), (16, 38510), (29, 38801), (37, 38930), (51, 39002), (70, 39125), (88, 39146), (90, 39152), (Start: 100 @39179 has 108 MA's), (109, 39227), (124, 39323), (130, 39350), (135, 39371), (137, 39377), (141, 39401), (155, 39488), (161, 39518), (166, 39551), (169, 39560), (175, 39599), (183, 39638), (189, 39665), (203, 39734),

Gene: Luke_71 Start: 48119, Stop: 48811, Start Num: 79

Candidate Starts for Luke_71:

(43, 47882), (Start: 79 @48119 has 10 MA's), (81, 48128), (91, 48170), (Start: 99 @48200 has 39 MA's), (113, 48281), (124, 48365), (129, 48389), (132, 48398), (137, 48428), (143, 48461), (153, 48527), (160, 48563), (168, 48617), (173, 48641), (175, 48644), (181, 48659), (187, 48686), (189, 48701), (192, 48710), (195, 48728), (198, 48743),

Gene: Luna22_67 Start: 48148, Stop: 48840, Start Num: 79

Candidate Starts for Luna22_67:

(43, 47911), (Start: 79 @48148 has 10 MA's), (81, 48157), (91, 48199), (Start: 99 @48229 has 39 MA's), (113, 48310), (124, 48394), (129, 48418), (132, 48427), (137, 48457), (143, 48490), (153, 48556), (160, 48592), (168, 48646), (173, 48670), (175, 48673), (181, 48688), (187, 48715), (189, 48730), (192, 48739), (195, 48757), (198, 48772),

Gene: Lysidious_76 Start: 47074, Stop: 47670, Start Num: 99

Candidate Starts for Lysidious_76:

(73, 46966), (75, 46984), (84, 47026), (Start: 99 @47074 has 39 MA's), (139, 47299), (141, 47311), (142, 47317), (155, 47398), (156, 47401), (163, 47443), (189, 47569),

Gene: MOOREtheMARYer_53 Start: 38622, Stop: 39209, Start Num: 99

Candidate Starts for MOOREtheMARYer_53:

(24, 38118), (45, 38466), (51, 38505), (Start: 99 @38622 has 39 MA's), (109, 38670), (126, 38775), (136, 38817), (137, 38820), (166, 38994), (167, 38997), (169, 39003), (183, 39078), (189, 39105), (193, 39120),

Gene: MZKinsey_49 Start: 36914, Stop: 37504, Start Num: 100

Candidate Starts for MZKinsey_49:

(15, 36242), (16, 36245), (29, 36536), (37, 36665), (51, 36737), (70, 36860), (88, 36881), (90, 36887), (Start: 100 @36914 has 108 MA's), (109, 36962), (124, 37058), (130, 37085), (135, 37106), (137, 37112), (141, 37136), (155, 37223), (161, 37253), (166, 37286), (169, 37295), (175, 37334), (183, 37373), (189, 37400), (203, 37469),

Gene: Maih_59 Start: 48773, Stop: 49363, Start Num: 105

Candidate Starts for Maih_59:

(78, 48650), (Start: 105 @48773 has 11 MA's), (116, 48824), (121, 48848), (123, 48875), (125, 48899), (133, 48932), (136, 48959), (137, 48962), (142, 48992), (148, 49031), (151, 49046), (155, 49073), (156, 49076), (172, 49166), (177, 49181), (180, 49187), (189, 49235), (196, 49265), (202, 49301),

Gene: Malachai_73 Start: 48471, Stop: 49061, Start Num: 100

Candidate Starts for Malachai_73:

(52, 48171), (54, 48192), (Start: 100 @48471 has 108 MA's), (139, 48693), (141, 48705), (142, 48711), (150, 48756), (152, 48774), (155, 48792), (156, 48795), (162, 48834), (163, 48837), (189, 48963),

Gene: Maliketh_49 Start: 36914, Stop: 37504, Start Num: 100

Candidate Starts for Maliketh_49:

(15, 36242), (16, 36245), (29, 36536), (37, 36665), (51, 36737), (70, 36860), (88, 36881), (90, 36887), (Start: 100 @36914 has 108 MA's), (109, 36962), (124, 37058), (130, 37085), (135, 37106), (137, 37112), (141, 37136), (155, 37223), (161, 37253), (166, 37286), (169, 37295), (175, 37334), (183,

37373), (189, 37400), (203, 37469),

Gene: Marmie_51 Start: 36914, Stop: 37504, Start Num: 100

Candidate Starts for Marmie_51:

(15, 36242), (16, 36245), (29, 36536), (37, 36665), (51, 36737), (70, 36860), (88, 36881), (90, 36887), (Start: 100 @36914 has 108 MA's), (109, 36962), (124, 37058), (130, 37085), (135, 37106), (137, 37112), (141, 37136), (155, 37223), (161, 37253), (166, 37286), (169, 37295), (175, 37334), (183, 37373), (189, 37400), (203, 37469),

Gene: Melba_74 Start: 45340, Stop: 45930, Start Num: 100

Candidate Starts for Melba_74:

(52, 45037), (54, 45058), (Start: 100 @45340 has 108 MA's), (139, 45562), (141, 45574), (142, 45580), (155, 45661), (156, 45664), (163, 45706), (189, 45832),

Gene: Mellie_72 Start: 45623, Stop: 46213, Start Num: 100

Candidate Starts for Mellie_72:

(30, 45134), (31, 45209), (48, 45299), (Start: 100 @45623 has 108 MA's), (115, 45698), (139, 45845), (141, 45857), (142, 45863), (155, 45944), (163, 45989), (189, 46115), (204, 46187),

Gene: Mercurio_53 Start: 39622, Stop: 40209, Start Num: 99

Candidate Starts for Mercurio_53:

(28, 39133), (89, 39583), (93, 39598), (Start: 99 @39622 has 39 MA's), (109, 39670), (111, 39676), (124, 39766), (137, 39820), (141, 39841), (155, 39928), (166, 39991), (169, 40000), (189, 40105), (203, 40174), (210, 40201),

Gene: MintFen_75 Start: 45842, Stop: 46432, Start Num: 100

Candidate Starts for MintFen_75:

(52, 45569), (54, 45590), (Start: 100 @45842 has 108 MA's), (136, 46049), (139, 46064), (141, 46076), (142, 46082), (150, 46127), (152, 46145), (155, 46163), (156, 46166), (162, 46205), (163, 46208), (189, 46334), (204, 46406),

Gene: Mischief19_67 Start: 58954, Stop: 59559, Start Num: 105

Candidate Starts for Mischief19_67:

(85, 58867), (Start: 105 @58954 has 11 MA's), (108, 58978), (109, 58987), (122, 59062), (128, 59128), (138, 59176), (148, 59242), (149, 59245), (151, 59257), (160, 59308), (166, 59347), (180, 59398), (183, 59419), (189, 59446),

Gene: MissRona_80 Start: 50047, Stop: 50631, Start Num: 100

Candidate Starts for MissRona_80:

(1, 48946), (2, 48967), (7, 49162), (12, 49204), (13, 49222), (20, 49342), (30, 49609), (35, 49705), (Start: 100 @50047 has 108 MA's), (116, 50128), (118, 50131), (125, 50200), (136, 50251), (137, 50254), (138, 50257), (145, 50296), (147, 50317), (162, 50404), (169, 50443), (171, 50455), (176, 50464), (189, 50524), (195, 50551),

Gene: Mowgli_51 Start: 36914, Stop: 37504, Start Num: 100

Candidate Starts for Mowgli_51:

(15, 36242), (16, 36245), (29, 36536), (37, 36665), (51, 36737), (70, 36860), (88, 36881), (90, 36887), (Start: 100 @36914 has 108 MA's), (109, 36962), (124, 37058), (130, 37085), (135, 37106), (137, 37112), (141, 37136), (155, 37223), (161, 37253), (166, 37286), (169, 37295), (175, 37334), (183, 37373), (189, 37400), (203, 37469),

Gene: Murp_73 Start: 48722, Stop: 49312, Start Num: 100

Candidate Starts for Murp_73:

(30, 48254), (48, 48419), (Start: 100 @48722 has 108 MA's), (139, 48944), (141, 48956), (142, 48962), (150, 49007), (152, 49025), (155, 49043), (156, 49046), (163, 49088), (189, 49214),

Gene: Neoh_50 Start: 37352, Stop: 37942, Start Num: 100

Candidate Starts for Neoh_50:

(15, 36680), (16, 36683), (29, 36974), (37, 37103), (51, 37175), (70, 37298), (88, 37319), (90, 37325), (Start: 100 @37352 has 108 MA's), (109, 37400), (124, 37496), (130, 37523), (135, 37544), (137, 37550), (141, 37574), (155, 37661), (161, 37691), (166, 37724), (169, 37733), (175, 37772), (183, 37811), (189, 37838), (203, 37907),

Gene: NovoPizza_79 Start: 50384, Stop: 51010, Start Num: 95

Candidate Starts for NovoPizza_79:

(18, 49607), (32, 49991), (36, 50015), (47, 50075), (49, 50096), (66, 50231), (67, 50246), (71, 50273), (72, 50276), (Start: 95 @50384 has 1 MA's), (Start: 99 @50399 has 39 MA's), (110, 50453), (129, 50588), (134, 50606), (137, 50627), (143, 50660), (149, 50699), (153, 50726), (160, 50762), (161, 50768), (164, 50786), (171, 50831), (173, 50840), (175, 50843), (177, 50852), (189, 50900), (192, 50909), (194, 50921), (195, 50927),

Gene: OBUpride_73 Start: 48289, Stop: 48900, Start Num: 99

Candidate Starts for OBUpride_73:

(43, 47971), (Start: 79 @48208 has 10 MA's), (81, 48217), (91, 48259), (Start: 99 @48289 has 39 MA's), (113, 48370), (124, 48454), (129, 48478), (132, 48487), (137, 48517), (143, 48550), (153, 48616), (160, 48652), (168, 48706), (173, 48730), (175, 48733), (181, 48748), (187, 48775), (189, 48790), (192, 48799), (195, 48817), (198, 48832),

Gene: Obliviate_74 Start: 45891, Stop: 46481, Start Num: 100

Candidate Starts for Obliviate_74:

(Start: 100 @45891 has 108 MA's), (139, 46113), (141, 46125), (142, 46131), (155, 46212), (156, 46215), (163, 46257), (189, 46383),

Gene: OctaviousRex_50 Start: 36914, Stop: 37504, Start Num: 100

Candidate Starts for OctaviousRex_50:

(15, 36242), (16, 36245), (29, 36536), (37, 36665), (51, 36737), (70, 36860), (88, 36881), (90, 36887), (Start: 100 @36914 has 108 MA's), (109, 36962), (124, 37058), (130, 37085), (135, 37106), (137, 37112), (141, 37136), (155, 37223), (161, 37253), (166, 37286), (169, 37295), (175, 37334), (183, 37373), (189, 37400), (203, 37469),

Gene: Olga_51 Start: 36914, Stop: 37504, Start Num: 100

Candidate Starts for Olga_51:

(15, 36242), (16, 36245), (29, 36536), (37, 36665), (51, 36737), (70, 36860), (88, 36881), (90, 36887), (Start: 100 @36914 has 108 MA's), (109, 36962), (124, 37058), (130, 37085), (135, 37106), (137, 37112), (141, 37136), (155, 37223), (161, 37253), (166, 37286), (169, 37295), (175, 37334), (183, 37373), (189, 37400), (203, 37469),

Gene: PCoral7_74 Start: 46525, Stop: 47115, Start Num: 100

Candidate Starts for PCoral7_74:

(Start: 100 @46525 has 108 MA's), (129, 46702), (137, 46735), (139, 46747), (141, 46759), (142, 46765), (150, 46810), (163, 46891), (189, 47017), (197, 47056),

Gene: Pace1224_50 Start: 37494, Stop: 38078, Start Num: 100

Candidate Starts for Pace1224_50:

(Start: 100 @37494 has 108 MA's), (115, 37560), (131, 37668), (136, 37689), (137, 37692), (138, 37695), (141, 37716), (154, 37797), (161, 37830), (166, 37863), (169, 37872), (183, 37947), (189,

37974),

Gene: Paito_53 Start: 37596, Stop: 38186, Start Num: 100

Candidate Starts for Paito_53:

(27, 37146), (29, 37230), (51, 37431), (90, 37569), (Start: 100 @37596 has 108 MA's), (124, 37740), (135, 37788), (137, 37794), (151, 37878), (155, 37905), (166, 37968), (169, 37977), (183, 38055), (189, 38082), (203, 38151),

Gene: Peeb_50 Start: 36905, Stop: 37495, Start Num: 100

Candidate Starts for Peeb_50:

(15, 36233), (16, 36236), (29, 36527), (37, 36656), (51, 36728), (70, 36851), (88, 36872), (90, 36878), (Start: 100 @36905 has 108 MA's), (109, 36953), (124, 37049), (130, 37076), (135, 37097), (137, 37103), (141, 37127), (155, 37214), (161, 37244), (166, 37277), (169, 37286), (175, 37325), (183, 37364), (189, 37391), (203, 37460),

Gene: Periodt_51 Start: 37067, Stop: 37657, Start Num: 100

Candidate Starts for Periodt_51:

(Start: 100 @37067 has 108 MA's), (109, 37115), (124, 37211), (135, 37259), (137, 37265), (141, 37289), (155, 37376), (161, 37406), (166, 37439), (169, 37448), (175, 37487), (183, 37526), (189, 37553), (203, 37622),

Gene: Petra_80 Start: 48158, Stop: 48742, Start Num: 100

Candidate Starts for Petra_80:

(Start: 100 @48158 has 108 MA's), (112, 48224), (116, 48239), (125, 48311), (137, 48365), (138, 48368), (145, 48407), (147, 48428), (152, 48455), (162, 48515), (169, 48554), (171, 48566), (176, 48575), (189, 48635),

Gene: Phish_50 Start: 36914, Stop: 37504, Start Num: 100

Candidate Starts for Phish_50:

(15, 36242), (16, 36245), (29, 36536), (37, 36665), (51, 36737), (70, 36860), (88, 36881), (90, 36887), (Start: 100 @36914 has 108 MA's), (109, 36962), (124, 37058), (130, 37085), (135, 37106), (137, 37112), (141, 37136), (155, 37223), (161, 37253), (166, 37286), (169, 37295), (175, 37334), (183, 37373), (189, 37400), (203, 37469),

Gene: Phloodle_49 Start: 36929, Stop: 37519, Start Num: 100

Candidate Starts for Phloodle_49:

(15, 36257), (16, 36260), (29, 36551), (37, 36680), (51, 36752), (70, 36875), (88, 36896), (90, 36902), (Start: 100 @36929 has 108 MA's), (109, 36977), (124, 37073), (130, 37100), (135, 37121), (137, 37127), (141, 37151), (155, 37238), (161, 37268), (166, 37301), (169, 37310), (175, 37349), (183, 37388), (189, 37415), (203, 37484),

Gene: Phreak_51 Start: 36914, Stop: 37504, Start Num: 100

Candidate Starts for Phreak_51:

(15, 36242), (16, 36245), (29, 36536), (37, 36665), (51, 36737), (70, 36860), (88, 36881), (90, 36887), (Start: 100 @36914 has 108 MA's), (109, 36962), (124, 37058), (130, 37085), (135, 37106), (137, 37112), (141, 37136), (155, 37223), (161, 37253), (166, 37286), (169, 37295), (175, 37334), (183, 37373), (189, 37400), (203, 37469),

Gene: PhrostedPhlake_81 Start: 48308, Stop: 48892, Start Num: 100

Candidate Starts for PhrostedPhlake_81:

(30, 47840), (31, 47915), (48, 48005), (Start: 100 @48308 has 108 MA's), (116, 48389), (125, 48461), (128, 48479), (136, 48512), (137, 48515), (138, 48518), (145, 48557), (147, 48578), (162, 48665), (171, 48716), (176, 48725), (189, 48785),

Gene: PinkYoshi_51 Start: 36905, Stop: 37495, Start Num: 100

Candidate Starts for PinkYoshi_51:

(15, 36233), (16, 36236), (29, 36527), (37, 36656), (51, 36728), (70, 36851), (88, 36872), (90, 36878), (Start: 100 @36905 has 108 MA's), (109, 36953), (124, 37049), (130, 37076), (135, 37097), (137, 37103), (141, 37127), (155, 37214), (161, 37244), (166, 37277), (169, 37286), (175, 37325), (183, 37364), (189, 37391), (203, 37460),

Gene: Pinnie_50 Start: 38254, Stop: 38841, Start Num: 99

Candidate Starts for Pinnie_50:

(59, 38170), (65, 38215), (Start: 99 @38254 has 39 MA's), (109, 38302), (126, 38407), (136, 38449), (137, 38452), (166, 38626), (167, 38629), (169, 38635), (183, 38710), (189, 38737), (193, 38752),

Gene: Pipp_79 Start: 47870, Stop: 48448, Start Num: 96

Candidate Starts for Pipp_79:

(Start: 96 @47870 has 2 MA's), (98, 47873), (116, 47954), (125, 48026), (128, 48044), (136, 48077), (137, 48080), (138, 48083), (145, 48122), (147, 48143), (162, 48230), (171, 48281), (176, 48290), (189, 48350),

Gene: Plagueis_51 Start: 36734, Stop: 37324, Start Num: 100

Candidate Starts for Plagueis_51:

(15, 36062), (16, 36065), (29, 36356), (37, 36485), (51, 36557), (70, 36680), (88, 36701), (90, 36707), (Start: 100 @36734 has 108 MA's), (109, 36782), (124, 36878), (130, 36905), (135, 36926), (137, 36932), (141, 36956), (155, 37043), (161, 37073), (166, 37106), (169, 37115), (175, 37154), (183, 37193), (189, 37220), (203, 37289),

Gene: Portcullis_65 Start: 47219, Stop: 47821, Start Num: 99

Candidate Starts for Portcullis_65:

(Start: 99 @47219 has 39 MA's), (144, 47459), (156, 47537), (159, 47552), (166, 47597), (171, 47618), (185, 47687), (186, 47690), (188, 47696), (195, 47726), (197, 47738), (205, 47774), (212, 47804),

Gene: PrincePatrick_76 Start: 45859, Stop: 46449, Start Num: 100

Candidate Starts for PrincePatrick_76:

(Start: 100 @45859 has 108 MA's), (129, 46036), (137, 46069), (139, 46081), (141, 46093), (142, 46099), (150, 46144), (189, 46351), (197, 46390),

Gene: Rabbs_53 Start: 37053, Stop: 37640, Start Num: 100

Candidate Starts for Rabbs_53:

(21, 36564), (23, 36606), (25, 36642), (51, 36975), (Start: 100 @37053 has 108 MA's), (124, 37197), (135, 37245), (137, 37251), (141, 37275), (155, 37362), (166, 37425), (169, 37434), (183, 37509), (189, 37536),

Gene: RainyPolka_58 Start: 48033, Stop: 48623, Start Num: 105

Candidate Starts for RainyPolka_58:

(Start: 105 @48033 has 11 MA's), (116, 48084), (121, 48108), (123, 48135), (125, 48159), (129, 48180), (133, 48192), (137, 48222), (142, 48252), (148, 48291), (151, 48306), (152, 48315), (156, 48336), (166, 48396), (177, 48441), (180, 48447), (189, 48495), (196, 48525), (202, 48561),

Gene: Rattrick_51 Start: 37067, Stop: 37657, Start Num: 100

Candidate Starts for Rattrick_51:

(Start: 100 @37067 has 108 MA's), (109, 37115), (124, 37211), (135, 37259), (137, 37265), (141, 37289), (155, 37376), (161, 37406), (166, 37439), (169, 37448), (175, 37487), (183, 37526), (189, 37553), (203, 37622),

Gene: Rem711_70 Start: 43454, Stop: 44074, Start Num: 99

Candidate Starts for Rem711_70:

(Start: 99 @43454 has 39 MA's), (101, 43463), (103, 43466), (109, 43505), (119, 43544), (125, 43610), (128, 43628), (131, 43637), (139, 43679), (171, 43853), (189, 43922), (192, 43931), (201, 43985),

Gene: Remy19_51 Start: 36914, Stop: 37504, Start Num: 100

Candidate Starts for Remy19_51:

(15, 36242), (16, 36245), (29, 36536), (37, 36665), (51, 36737), (70, 36860), (88, 36881), (90, 36887), (Start: 100 @36914 has 108 MA's), (109, 36962), (124, 37058), (130, 37085), (135, 37106), (137, 37112), (141, 37136), (155, 37223), (161, 37253), (166, 37286), (169, 37295), (175, 37334), (183, 37373), (189, 37400), (203, 37469),

Gene: Renaissance_51 Start: 36914, Stop: 37504, Start Num: 100

Candidate Starts for Renaissance_51:

(15, 36242), (16, 36245), (29, 36536), (37, 36665), (51, 36737), (70, 36860), (88, 36881), (90, 36887), (Start: 100 @36914 has 108 MA's), (109, 36962), (124, 37058), (130, 37085), (135, 37106), (137, 37112), (141, 37136), (155, 37223), (161, 37253), (166, 37286), (169, 37295), (175, 37334), (183, 37373), (189, 37400), (203, 37469),

Gene: Richarlison_49 Start: 36899, Stop: 37489, Start Num: 100

Candidate Starts for Richarlison_49:

(15, 36227), (16, 36230), (29, 36521), (37, 36650), (51, 36722), (70, 36845), (88, 36866), (90, 36872), (Start: 100 @36899 has 108 MA's), (109, 36947), (124, 37043), (130, 37070), (135, 37091), (137, 37097), (141, 37121), (155, 37208), (161, 37238), (166, 37271), (169, 37280), (175, 37319), (183, 37358), (189, 37385), (203, 37454),

Gene: RogerDodger_66 Start: 47394, Stop: 47993, Start Num: 99

Candidate Starts for RogerDodger_66:

(3, 46452), (4, 46458), (5, 46464), (6, 46470), (8, 46476), (10, 46500), (19, 46623), (60, 47166), (Start: 99 @47394 has 39 MA's), (142, 47628), (159, 47724), (166, 47769), (178, 47826), (185, 47859), (188, 47868), (195, 47898), (197, 47910), (205, 47946), (212, 47976),

Gene: Ruriko_49 Start: 36914, Stop: 37504, Start Num: 100

Candidate Starts for Ruriko_49:

(15, 36242), (16, 36245), (29, 36536), (37, 36665), (51, 36737), (70, 36860), (88, 36881), (90, 36887), (Start: 100 @36914 has 108 MA's), (109, 36962), (124, 37058), (130, 37085), (135, 37106), (137, 37112), (141, 37136), (155, 37223), (161, 37253), (166, 37286), (169, 37295), (175, 37334), (183, 37373), (189, 37400), (203, 37469),

Gene: Salete_60 Start: 48760, Stop: 49350, Start Num: 105

Candidate Starts for Salete_60:

(78, 48637), (Start: 105 @48760 has 11 MA's), (114, 48799), (116, 48811), (121, 48835), (123, 48862), (125, 48886), (133, 48919), (136, 48946), (137, 48949), (142, 48979), (148, 49018), (151, 49033), (155, 49060), (156, 49063), (172, 49153), (177, 49168), (180, 49174), (189, 49222), (196, 49252), (202, 49288),

Gene: Samba_75 Start: 48756, Stop: 49346, Start Num: 100

Candidate Starts for Samba_75:

(41, 48378), (54, 48474), (Start: 100 @48756 has 108 MA's), (139, 48978), (141, 48990), (142, 48996), (150, 49041), (152, 49059), (155, 49077), (156, 49080), (162, 49119), (163, 49122), (189, 49248),

Gene: Savbucketdawg_62 Start: 46938, Stop: 47537, Start Num: 99

Candidate Starts for Savbucketdawg_62:

(3, 45984), (4, 45990), (5, 45996), (6, 46002), (8, 46008), (10, 46032), (60, 46710), (Start: 99 @46938 has 39 MA's), (142, 47172), (159, 47268), (166, 47313), (178, 47370), (185, 47403), (188, 47412), (195, 47442), (197, 47454), (212, 47520),

Gene: Schiebel_51 Start: 36899, Stop: 37489, Start Num: 100

Candidate Starts for Schiebel_51:

(15, 36227), (16, 36230), (29, 36521), (37, 36650), (51, 36722), (70, 36845), (88, 36866), (90, 36872), (Start: 100 @36899 has 108 MA's), (109, 36947), (124, 37043), (130, 37070), (135, 37091), (137, 37097), (141, 37121), (155, 37208), (161, 37238), (166, 37271), (169, 37280), (175, 37319), (183, 37358), (189, 37385), (203, 37454),

Gene: ShaboiShabazz_50 Start: 36914, Stop: 37504, Start Num: 100

Candidate Starts for ShaboiShabazz_50:

(15, 36242), (16, 36245), (29, 36536), (37, 36665), (51, 36737), (70, 36860), (88, 36881), (90, 36887), (Start: 100 @36914 has 108 MA's), (109, 36962), (124, 37058), (130, 37085), (135, 37106), (137, 37112), (141, 37136), (155, 37223), (161, 37253), (166, 37286), (169, 37295), (175, 37334), (183, 37373), (189, 37400), (203, 37469),

Gene: Sizemore_51 Start: 36900, Stop: 37490, Start Num: 100

Candidate Starts for Sizemore_51:

(15, 36228), (16, 36231), (29, 36522), (37, 36651), (51, 36723), (70, 36846), (88, 36867), (90, 36873), (Start: 100 @36900 has 108 MA's), (109, 36948), (124, 37044), (130, 37071), (135, 37092), (137, 37098), (141, 37122), (155, 37209), (161, 37239), (166, 37272), (169, 37281), (175, 37320), (183, 37359), (189, 37386), (203, 37455),

Gene: SmokingBunny_63 Start: 47232, Stop: 47831, Start Num: 99

Candidate Starts for SmokingBunny_63:

(3, 46362), (4, 46368), (5, 46374), (6, 46380), (8, 46386), (60, 47004), (Start: 99 @47232 has 39 MA's), (142, 47466), (159, 47562), (166, 47607), (178, 47664), (185, 47697), (188, 47706), (195, 47736), (197, 47748), (205, 47784), (212, 47814),

Gene: Sneeze_52 Start: 37052, Stop: 37639, Start Num: 100

Candidate Starts for Sneeze_52:

(21, 36563), (23, 36605), (25, 36641), (51, 36974), (Start: 100 @37052 has 108 MA's), (124, 37196), (135, 37244), (137, 37250), (141, 37274), (155, 37361), (166, 37424), (169, 37433), (183, 37508), (189, 37535),

Gene: Stargaze_52 Start: 38445, Stop: 39032, Start Num: 99

Candidate Starts for Stargaze_52:

(45, 38190), (89, 38406), (Start: 99 @38445 has 39 MA's), (109, 38493), (126, 38598), (136, 38640), (137, 38643), (154, 38751), (166, 38817), (167, 38820), (169, 38826), (183, 38901), (189, 38928),

Gene: Sweets_50 Start: 36909, Stop: 37499, Start Num: 100

Candidate Starts for Sweets_50:

(15, 36237), (16, 36240), (29, 36531), (37, 36660), (51, 36732), (70, 36855), (88, 36876), (90, 36882), (Start: 100 @36909 has 108 MA's), (109, 36957), (124, 37053), (130, 37080), (135, 37101), (137, 37107), (141, 37131), (155, 37218), (161, 37248), (166, 37281), (169, 37290), (175, 37329), (183, 37368), (189, 37395), (203, 37464),

Gene: TP1604_60 Start: 48765, Stop: 49355, Start Num: 105

Candidate Starts for TP1604_60:

(Start: 105 @48765 has 11 MA's), (116, 48816), (121, 48840), (123, 48867), (125, 48891), (133, 48924), (136, 48951), (137, 48954), (142, 48984), (148, 49023), (151, 49038), (155, 49065), (156, 49068), (172, 49158), (177, 49173), (180, 49179), (189, 49227), (196, 49257), (202, 49293),

Gene: Taheera_49 Start: 36701, Stop: 37288, Start Num: 100

Candidate Starts for Taheera_49:

(Start: 100 @36701 has 108 MA's), (124, 36845), (135, 36893), (137, 36899), (141, 36923), (155, 37010), (166, 37073), (169, 37082), (183, 37157), (189, 37184),

Gene: Terror_49 Start: 36701, Stop: 37288, Start Num: 100

Candidate Starts for Terror_49:

(Start: 100 @36701 has 108 MA's), (124, 36845), (135, 36893), (137, 36899), (141, 36923), (155, 37010), (166, 37073), (169, 37082), (183, 37157), (189, 37184),

Gene: TinaBug_51 Start: 36909, Stop: 37499, Start Num: 100

Candidate Starts for TinaBug_51:

(15, 36237), (16, 36240), (29, 36531), (37, 36660), (51, 36732), (70, 36855), (88, 36876), (90, 36882), (Start: 100 @36909 has 108 MA's), (109, 36957), (124, 37053), (130, 37080), (135, 37101), (137, 37107), (141, 37131), (155, 37218), (161, 37248), (166, 37281), (169, 37290), (175, 37329), (183, 37368), (189, 37395), (203, 37464),

Gene: Toast_74 Start: 46525, Stop: 47115, Start Num: 100

Candidate Starts for Toast_74:

(Start: 100 @46525 has 108 MA's), (129, 46702), (137, 46735), (139, 46747), (141, 46759), (142, 46765), (150, 46810), (163, 46891), (189, 47017), (197, 47056),

Gene: Togo_62 Start: 47232, Stop: 47831, Start Num: 99

Candidate Starts for Togo_62:

(3, 46362), (4, 46368), (5, 46374), (6, 46380), (8, 46386), (60, 47004), (Start: 99 @47232 has 39 MA's), (142, 47466), (159, 47562), (166, 47607), (178, 47664), (185, 47697), (188, 47706), (195, 47736), (197, 47748), (205, 47784), (212, 47814),

Gene: TomBrady_51 Start: 36915, Stop: 37505, Start Num: 100

Candidate Starts for TomBrady_51:

(15, 36243), (16, 36246), (29, 36537), (37, 36666), (51, 36738), (70, 36861), (88, 36882), (90, 36888), (Start: 100 @36915 has 108 MA's), (109, 36963), (124, 37059), (130, 37086), (135, 37107), (137, 37113), (141, 37137), (155, 37224), (161, 37254), (166, 37287), (169, 37296), (175, 37335), (183, 37374), (189, 37401), (203, 37470),

Gene: Twister6_65 Start: 46992, Stop: 47591, Start Num: 99

Candidate Starts for Twister6_65:

(9, 46068), (11, 46077), (17, 46158), (60, 46764), (Start: 99 @46992 has 39 MA's), (142, 47226), (159, 47322), (166, 47367), (178, 47424), (185, 47457), (188, 47466), (195, 47496), (197, 47508), (205, 47544), (212, 47574),

Gene: Typha_83 Start: 54897, Stop: 55466, Start Num: 100

Candidate Starts for Typha_83:

(73, 54768), (74, 54771), (80, 54807), (Start: 100 @54897 has 108 MA's), (117, 54963), (128, 55053), (129, 55056), (136, 55086), (137, 55089), (146, 55146), (151, 55170), (153, 55185), (154, 55194), (155, 55197), (156, 55200), (158, 55212), (166, 55260), (171, 55281), (184, 55347), (190, 55368), (197, 55401), (200, 55422), (206, 55434),

Gene: Ubuntu_74 Start: 48245, Stop: 48856, Start Num: 99

Candidate Starts for Ubuntu_74:

(43, 47927), (Start: 79 @48164 has 10 MA's), (81, 48173), (91, 48215), (Start: 99 @48245 has 39 MA's), (113, 48326), (124, 48410), (129, 48434), (132, 48443), (137, 48473), (143, 48506), (153, 48572), (160, 48608), (168, 48662), (173, 48686), (175, 48689), (181, 48704), (187, 48731), (189, 48746), (192, 48755), (195, 48773), (198, 48788),

Gene: UmaThurman_76 Start: 46447, Stop: 47037, Start Num: 100

Candidate Starts for UmaThurman_76:

(Start: 100 @46447 has 108 MA's), (139, 46669), (141, 46681), (142, 46687), (150, 46732), (152, 46750), (155, 46768), (156, 46771), (162, 46810), (163, 46813), (189, 46939), (204, 47011),

Gene: Utz_66 Start: 46364, Stop: 46954, Start Num: 100

Candidate Starts for Utz_66:

(Start: 100 @46364 has 108 MA's), (139, 46586), (141, 46598), (142, 46604), (150, 46649), (152, 46667), (156, 46688), (163, 46730), (189, 46856), (204, 46928),

Gene: Valary_64 Start: 47836, Stop: 48438, Start Num: 99

Candidate Starts for Valary_64:

(Start: 99 @47836 has 39 MA's), (144, 48076), (156, 48154), (159, 48169), (166, 48214), (171, 48235), (185, 48304), (186, 48307), (188, 48313), (195, 48343), (197, 48355), (212, 48421),

Gene: VanDeWege_65 Start: 47176, Stop: 47778, Start Num: 99

Candidate Starts for VanDeWege_65:

(Start: 99 @47176 has 39 MA's), (144, 47416), (156, 47494), (159, 47509), (166, 47554), (171, 47575), (185, 47644), (186, 47647), (188, 47653), (195, 47683), (197, 47695), (212, 47761),

Gene: Walrus_73 Start: 47019, Stop: 47603, Start Num: 100

Candidate Starts for Walrus_73:

(94, 47004), (Start: 100 @47019 has 108 MA's), (112, 47085), (116, 47100), (125, 47172), (136, 47223), (137, 47226), (138, 47229), (145, 47268), (147, 47289), (162, 47376), (171, 47427), (176, 47436), (189, 47496),

Gene: Webster2_74 Start: 48245, Stop: 48856, Start Num: 99

Candidate Starts for Webster2_74:

(43, 47927), (Start: 79 @48164 has 10 MA's), (81, 48173), (91, 48215), (Start: 99 @48245 has 39 MA's), (113, 48326), (124, 48410), (129, 48434), (132, 48443), (137, 48473), (143, 48506), (153, 48572), (160, 48608), (168, 48662), (173, 48686), (175, 48689), (181, 48704), (187, 48731), (189, 48746), (192, 48755), (195, 48773), (198, 48788),

Gene: Weirido19_69 Start: 44467, Stop: 45291, Start Num: 66

Candidate Starts for Weirido19_69:

(44, 44290), (66, 44467), (87, 44593), (102, 44650), (119, 44746), (125, 44812), (129, 44833), (137, 44884), (143, 44917), (149, 44956), (155, 44995), (164, 45046), (178, 45130), (182, 45154), (189, 45193), (191, 45199), (208, 45280),

Gene: Wendigo_49 Start: 36914, Stop: 37504, Start Num: 100

Candidate Starts for Wendigo_49:

(15, 36242), (16, 36245), (29, 36536), (37, 36665), (51, 36737), (70, 36860), (88, 36881), (90, 36887), (Start: 100 @36914 has 108 MA's), (109, 36962), (124, 37058), (130, 37085), (135, 37106), (137, 37112), (141, 37136), (155, 37223), (161, 37253), (166, 37286), (169, 37295), (175, 37334), (183, 37373), (189, 37400), (203, 37469),

Gene: William_77 Start: 47824, Stop: 48414, Start Num: 100

Candidate Starts for William_77:

(26, 47206), (46, 47485), (55, 47560), (Start: 100 @47824 has 108 MA's), (139, 48046), (141, 48058), (142, 48064), (150, 48109), (155, 48145), (156, 48148), (163, 48190), (189, 48316),

Gene: Wishmaker_67 Start: 48164, Stop: 48856, Start Num: 79

Candidate Starts for Wishmaker_67:

(43, 47927), (Start: 79 @48164 has 10 MA's), (81, 48173), (91, 48215), (Start: 99 @48245 has 39 MA's), (113, 48326), (124, 48410), (129, 48434), (132, 48443), (137, 48473), (143, 48506), (153, 48572), (160, 48608), (168, 48662), (173, 48686), (175, 48689), (181, 48704), (187, 48731), (189, 48746), (192, 48755), (195, 48773), (198, 48788),

Gene: Wisp_73 Start: 46479, Stop: 47069, Start Num: 100

Candidate Starts for Wisp_73:

(Start: 100 @46479 has 108 MA's), (139, 46701), (141, 46713), (142, 46719), (152, 46782), (155, 46800), (156, 46803), (162, 46842), (163, 46845), (189, 46971), (204, 47043),

Gene: Wizard_61 Start: 47082, Stop: 47684, Start Num: 99

Candidate Starts for Wizard_61:

(Start: 99 @47082 has 39 MA's), (144, 47322), (156, 47400), (159, 47415), (166, 47460), (171, 47481), (185, 47550), (186, 47553), (188, 47559), (195, 47589), (197, 47601), (212, 47667),

Gene: Wocket_74 Start: 46904, Stop: 47488, Start Num: 100

Candidate Starts for Wocket_74:

(Start: 100 @46904 has 108 MA's), (116, 46985), (125, 47057), (137, 47111), (138, 47114), (145, 47153), (147, 47174), (169, 47300), (171, 47312), (176, 47321), (189, 47381),

Gene: Xkcd426_61 Start: 53906, Stop: 54505, Start Num: 105

Candidate Starts for Xkcd426_61:

(66, 53699), (Start: 105 @53906 has 11 MA's), (107, 53921), (116, 53981), (125, 54056), (127, 54068), (155, 54233), (166, 54296), (179, 54344), (180, 54347), (183, 54368), (189, 54395), (193, 54410), (204, 54467),

Gene: YDN12_59 Start: 47595, Stop: 48179, Start Num: 105

Candidate Starts for YDN12_59:

(78, 47472), (Start: 105 @47595 has 11 MA's), (116, 47646), (121, 47670), (123, 47697), (125, 47721), (129, 47742), (136, 47781), (142, 47814), (148, 47853), (151, 47868), (156, 47898), (166, 47958), (167, 47961), (172, 47988), (179, 48006), (180, 48009), (183, 48030), (189, 48057), (202, 48123),

Gene: YangYin_52 Start: 38427, Stop: 39053, Start Num: 89

Candidate Starts for YangYin_52:

(45, 38211), (89, 38427), (Start: 99 @38466 has 39 MA's), (109, 38514), (126, 38619), (136, 38661), (137, 38664), (154, 38772), (166, 38838), (167, 38841), (169, 38847), (183, 38922), (189, 38949),

Gene: YungMoney_63 Start: 49207, Stop: 49806, Start Num: 99

Candidate Starts for YungMoney_63:

(Start: 99 @49207 has 39 MA's), (159, 49537), (166, 49582), (178, 49639), (185, 49672), (188, 49681), (195, 49711), (197, 49723), (205, 49759), (212, 49789),

Gene: Zarbodnamra_79 Start: 46838, Stop: 47428, Start Num: 100

Candidate Starts for Zarbodnamra_79:

(52, 46565), (54, 46586), (Start: 100 @46838 has 108 MA's), (139, 47060), (141, 47072), (142, 47078), (150, 47123), (152, 47141), (156, 47162), (163, 47204), (189, 47330), (204, 47402),

Gene: ZiggyZoo_76 Start: 48324, Stop: 48914, Start Num: 100

Candidate Starts for ZiggyZoo_76:

(Start: 100 @48324 has 108 MA's), (139, 48546), (141, 48558), (142, 48564), (150, 48609), (152, 48627), (155, 48645), (156, 48648), (162, 48687), (163, 48690), (189, 48816),

Gene: Zilla_73 Start: 45688, Stop: 46278, Start Num: 100

Candidate Starts for Zilla_73:

(52, 45415), (54, 45436), (Start: 100 @45688 has 108 MA's), (136, 45895), (139, 45910), (141, 45922), (142, 45928), (150, 45973), (156, 46012), (162, 46051), (163, 46054), (189, 46180), (204, 46252),

Gene: ZoMa_49 Start: 36914, Stop: 37504, Start Num: 100

Candidate Starts for ZoMa_49:

(15, 36242), (16, 36245), (29, 36536), (37, 36665), (51, 36737), (70, 36860), (88, 36881), (90, 36887), (Start: 100 @36914 has 108 MA's), (109, 36962), (124, 37058), (130, 37085), (135, 37106), (137, 37112), (141, 37136), (155, 37223), (161, 37253), (166, 37286), (169, 37295), (175, 37334), (183, 37373), (189, 37400), (203, 37469),

Gene: Zombie_50 Start: 36914, Stop: 37504, Start Num: 100

Candidate Starts for Zombie_50:

(15, 36242), (16, 36245), (29, 36536), (37, 36665), (51, 36737), (70, 36860), (88, 36881), (90, 36887), (Start: 100 @36914 has 108 MA's), (109, 36962), (124, 37058), (130, 37085), (135, 37106), (137, 37112), (141, 37136), (155, 37223), (161, 37253), (166, 37286), (169, 37295), (175, 37334), (183, 37373), (189, 37400), (203, 37469),