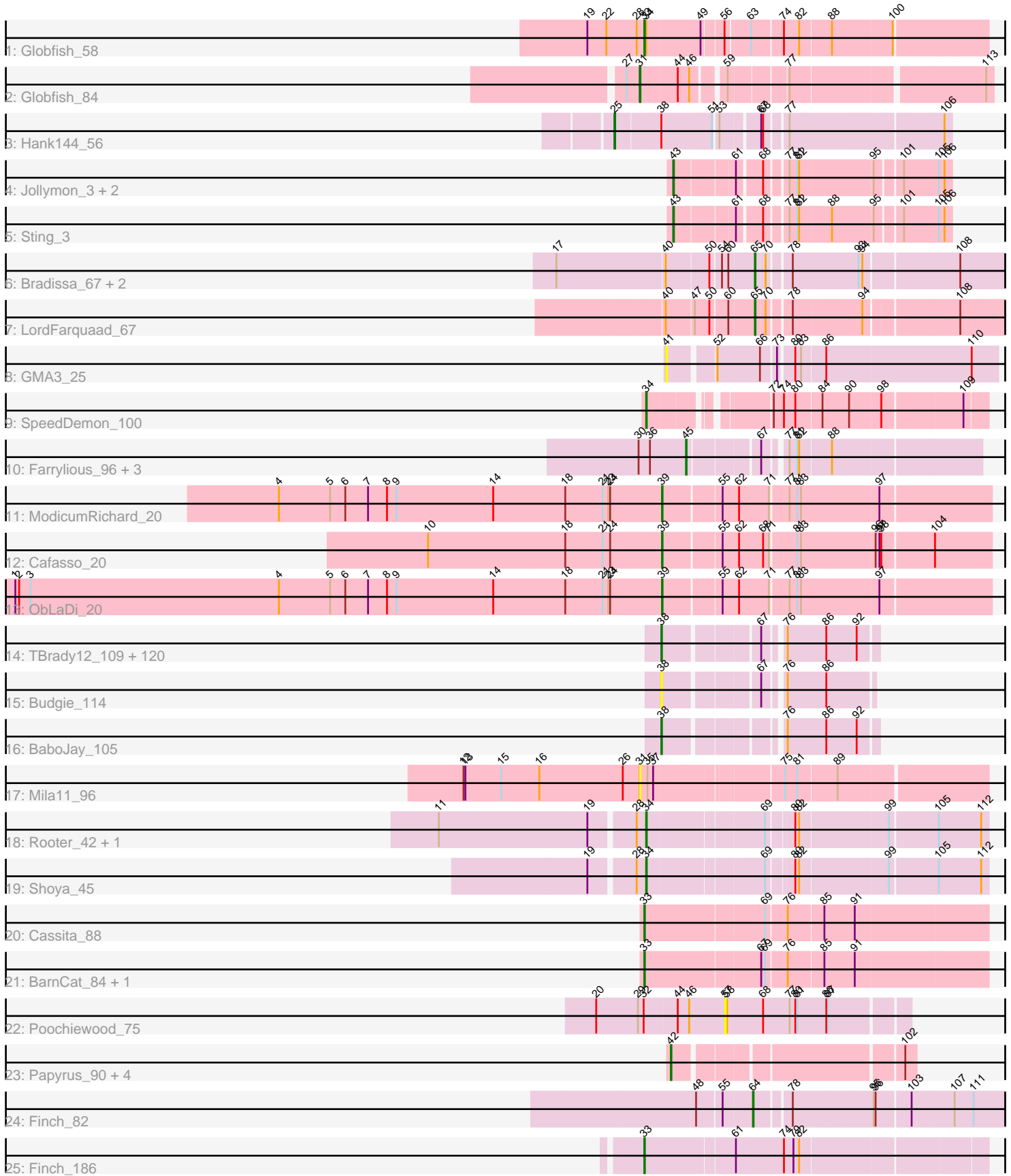


Pham 294481



Note: Tracks are now grouped by subcluster and scaled. Switching in subcluster is indicated by changes in track color. Track scale is now set by default to display the region 30 bp upstream of start 1 to 30 bp downstream of the last possible start. If this default region is judged to be packed too tightly with annotated starts, the track will be further scaled to only show that region of the ORF with annotated starts. This action will be indicated by adding "Zoomed" to the title. For starts, yellow indicates the location of called starts comprised solely of Glimmer/GeneMark auto-annotations, green indicates the location of called starts with at least 1 manual gene annotation.

Pham 294481 Report

This analysis was run 04/18/26 on database version 643.

Pham number 294481 has 158 members, 10 are drafts.

Phages represented in each track:

- Track 1 : Globfish_58
- Track 2 : Globfish_84
- Track 3 : Hank144_56
- Track 4 : Jollymon_3, ColdSoup_3, Amo99_3
- Track 5 : Sting_3
- Track 6 : Bradissa_67, Lilas_67, EnalisNailo_66
- Track 7 : LordFarquaad_67
- Track 8 : GMA3_25
- Track 9 : SpeedDemon_100
- Track 10 : Farrylious_96, ChisanaKitsune_96, MintFritos_94, Argena_96
- Track 11 : ModicumRichard_20
- Track 12 : Cafasso_20
- Track 13 : ObLaDi_20
- Track 14 : TBrady12_109, Lilizi_106, Glexan_105, Bench_108, JeTaime_104, Lilpickle_105, Nimrod_106, Hopey_106, Murphy_105, Paperbeatsrock_105, DrDrey_106, Stark_106, Nala_108, Moldemort_108, ShamWow_106, Kimchi_110, Emmina_106, Traaww1_102, RiverMonster_105, Contagion_102, Adnama_110, Gage_108, Cjw1_106, Pat3_103, Misfit_107, Teaspoon_106, Inca_103, Henry_103, Murica_109, GooberAzure_109, Phaja_104, Cookies_103, HanKaySha_106, StolenFromERC_108, Bruin_103, Tarkin_105, PhatBacter_109, Buck_107, Elite2014_105, Manda_107, GoldenSpark_110, Phaux_108, ChosenOne_106, Miniwave_101, Harella_106, Kostya_106, Wiggin_108, NelitzaMV_103, Dumbo_105, Mindy_105, Pumpkin_107, CrystalP_105, ChotaBhai_106, Bask21_106, Ukulele_100, Barbarian_105, DoctorDiddles_105, xkcd_109, Gator_104, Hoonter_109, Easy2Say_106, TeardropMSU_102, Flypotenuse_102, ABCat_103, Saints25_102, FireRed_109, Lilac_107, Thresher_107, YassJohnny_103, 244_106, Sassay_101, Cactus_110, Sotrice96_107, Gemini_111, Goldilocks_109, SirDuracell_106, SophKB_104, Dusk_103, Icee_107, Balomoji_106, BadStone_103, Asriel_104, Thimble_108, Youngblood_109, Tuco_107, Rimmer_104, Argent26_110, Terminus_109, Phrux_102, Pharsalus_103, HufflyPuff_108, Command613_108, Highbury_102, Czyszczonek_106, Elph10_105, Filch_107, ShereKhan_104, Willez_101, MISSy_107, BigBubba_106, Goku_105, Mosby_102, Stank_108, Myrale_106, Marshmallow_103, Amao_106, MadamMonkfish_105, Kanye_103, Eureka_105, StellaBean_105, OrionPax_104, NoSleep_106, Holt_111, MPhalcon_107, Toto_104, Porky_104, Tomaszewski_101, Rakim_107, Simpliphy_104, Maxxinista_107, IHOP_104
- Track 15 : Budgie_114

- Track 16 : BaboJay_105
- Track 17 : Mila11_96
- Track 18 : Rooter_42, Sarge_39
- Track 19 : Shoya_45
- Track 20 : Cassita_88
- Track 21 : BarnCat_84, LeeroyJenkins_94
- Track 22 : Poochiewood_75
- Track 23 : Papyrus_90, Nilo_93, Riparian_92, Weiss13_90, Zenon_92
- Track 24 : Finch_82
- Track 25 : Finch_186

Summary of Final Annotations (See graph section above for start numbers):

The start number called the most often in the published annotations is 38, it was called in 122 of the 148 non-draft genes in the pham.

Genes that call this "Most Annotated" start:

- 244_106, ABCat_103, Adnama_110, Amao_106, Argent26_110, Asriel_104, BaboJay_105, BadStone_103, Balomoji_106, Barbarian_105, Bask21_106, Bench_108, BigBubba_106, Bruin_103, Buck_107, Budgie_114, Cactus_110, ChosenOne_106, ChotaBhai_106, Cjw1_106, Command613_108, Contagion_102, Cookies_103, CrystalP_105, Czyszczonek_106, DoctorDiddles_105, DrDrey_106, Dumbo_105, Dusk_103, Easy2Say_106, Elite2014_105, Elph10_105, Emmina_106, Eureka_105, Filch_107, FireRed_109, Flypotenuse_102, Gage_108, Gator_104, Gemini_111, Glexan_105, Goku_105, GoldenSpark_110, Goldilocks_109, GooberAzure_109, HankKaySha_106, Harella_106, Henry_103, Highbury_102, Holt_111, Hoonter_109, Hopey_106, HufflyPuff_108, IHOP_104, Icee_107, Inca_103, JeTaime_104, Kanye_103, Kimchi_110, Kostya_106, Lilac_107, Lilizi_106, Lilpickle_105, MISSy_107, MPalcon_107, MadamMonkfish_105, Manda_107, Marshmallow_103, Maxxinista_107, Mindy_105, Miniwave_101, Misfit_107, Moldemort_108, Mosby_102, Murica_109, Murphy_105, Myrale_106, Nala_108, NelitzaMV_103, Nimrod_106, NoSleep_106, OrionPax_104, Paperbeatsrock_105, Pat3_103, Phaja_104, Pharsalus_103, PhatBacter_109, Phaux_108, Phrux_102, Porky_104, Pumpkin_107, Rakim_107, Rimmer_104, RiverMonster_105, Saints25_102, Sassay_101, ShamWow_106, ShereKhan_104, Simpliphy_104, SirDuracell_106, SophKB_104, Sotrice96_107, Stank_108, Stark_106, StellaBean_105, StolenFromERC_108, TBrady12_109, Tarkin_105, TeardropMSU_102, Teaspoon_106, Terminus_109, Thimble_108, Thresher_107, Tomaszewski_101, Toto_104, Traaww1_102, Tuco_107, Ukulele_100, Wiggin_108, Willez_101, YassJohnny_103, Youngblood_109, xkcd_109,

Genes that have the "Most Annotated" start but do not call it:

- Hank144_56,

Genes that do not have the "Most Annotated" start:

- Amo99_3, Argena_96, BarnCat_84, Bradissa_67, Cafasso_20, Cassita_88, ChisanaKitsune_96, ColdSoup_3, EnalisNailo_66, Farrylious_96, Finch_186, Finch_82, GMA3_25, Globfish_58, Globfish_84, Jollymon_3, LeeroyJenkins_94, Lilas_67, LordFarquaad_67, Mila11_96, MintFritos_94, ModicumRichard_20, Nilo_93, ObLaDi_20, Papyrus_90, Poochiewood_75, Riparian_92, Rooter_42, Sarge_39,

Shoya_45, SpeedDemon_100, Sting_3, Weiss13_90, Zenon_92,

Summary by start number:

Start 25:

- Found in 1 of 158 (0.6%) of genes in pham
- Manual Annotations of this start: 1 of 148
- Called 100.0% of time when present
- Phage (with cluster) where this start called: Hank144_56 (BD2),

Start 31:

- Found in 2 of 158 (1.3%) of genes in pham
- Manual Annotations of this start: 1 of 148
- Called 100.0% of time when present
- Phage (with cluster) where this start called: Globfish_84 (AY), Mila11_96 (EG),

Start 33:

- Found in 5 of 158 (3.2%) of genes in pham
- Manual Annotations of this start: 5 of 148
- Called 100.0% of time when present
- Phage (with cluster) where this start called: BarnCat_84 (GB), Cassita_88 (GB), Finch_186 (singleton), Globfish_58 (AY), LeeroyJenkins_94 (GB),

Start 34:

- Found in 5 of 158 (3.2%) of genes in pham
- Manual Annotations of this start: 3 of 148
- Called 80.0% of time when present
- Phage (with cluster) where this start called: Rooter_42 (FB), Sarge_39 (FB), Shoya_45 (FB), SpeedDemon_100 (DL),

Start 38:

- Found in 124 of 158 (78.5%) of genes in pham
- Manual Annotations of this start: 122 of 148
- Called 99.2% of time when present
- Phage (with cluster) where this start called: 244_106 (E), ABCat_103 (E), Adnama_110 (E), Amao_106 (E), Argent26_110 (E), Asriel_104 (E), BaboJay_105 (E), BadStone_103 (E), Balomoji_106 (E), Barbarian_105 (E), Bask21_106 (E), Bench_108 (E), BigBubba_106 (E), Bruin_103 (E), Buck_107 (E), Budgie_114 (E), Cactus_110 (E), ChosenOne_106 (E), ChotaBhai_106 (E), Cjw1_106 (E), Command613_108 (E), Contagion_102 (E), Cookies_103 (E), CrystalP_105 (E), Czyszczonek_106 (E), DoctorDiddles_105 (E), DrDrey_106 (E), Dumbo_105 (E), Dusk_103 (E), Easy2Say_106 (E), Elite2014_105 (E), Elph10_105 (E), Emmina_106 (E), Eureka_105 (E), Filch_107 (E), FireRed_109 (E), Flypotenuse_102 (E), Gage_108 (E), Gator_104 (E), Gemini_111 (E), Glexan_105 (E), Goku_105 (E), GoldenSpark_110 (E), Goldilocks_109 (E), GooberAzure_109 (E), HanKaySha_106 (E), Harella_106 (E), Henry_103 (E), Highbury_102 (E), Holt_111 (E), Hoonter_109 (E), Hopey_106 (E), HufflyPuff_108 (E), IHOP_104 (E), Icee_107 (E), Inca_103 (E), JeTaimie_104 (E), Kanye_103 (E), Kimchi_110 (E), Kostya_106 (E), Lilac_107 (E), Lilizi_106 (E), Lilpickle_105 (E), MISSy_107 (E), MPhalcon_107 (E), MadamMonkfish_105 (E), Manda_107 (E), Marshmallow_103 (E), Maxxinista_107 (E), Mindy_105 (E), Miniwave_101 (E), Misfit_107 (E), Moldemort_108 (E), Mosby_102 (E), Murica_109 (E), Murphy_105 (E), Myrale_106 (E), Nala_108 (E), NelitzaMV_103 (E), Nimrod_106 (E), NoSleep_106 (E), OrionPax_104 (E),

Paperbeatsrock_105 (E), Pat3_103 (E), Phaja_104 (E), Pharsalus_103 (E), PhatBacter_109 (E), Phaux_108 (E), Phrux_102 (E), Porky_104 (E), Pumpkin_107 (E), Rakim_107 (E), Rimmer_104 (E), RiverMonster_105 (E), Saints25_102 (E), Sassay_101 (E), ShamWow_106 (E), ShereKhan_104 (E), Simpliphy_104 (E), SirDuracell_106 (E), SophKB_104 (E), Sotrice96_107 (E), Stank_108 (E), Stark_106 (E), StellaBean_105 (E), StolenFromERC_108 (E), TBrady12_109 (E), Tarkin_105 (E), TeardropMSU_102 (E), Teaspoon_106 (E), Terminus_109 (E), Thimble_108 (E), Thresher_107 (E), Tomaszewski_101 (E), Toto_104 (E), Traaww1_102 (E), Tuco_107 (E), Ukulele_100 (E), Wiggin_108 (E), Willez_101 (E), YassJohnny_103 (E), Youngblood_109 (E), xkcd_109 (E),

Start 39:

- Found in 3 of 158 (1.9%) of genes in pham
- Manual Annotations of this start: 3 of 148
- Called 100.0% of time when present
- Phage (with cluster) where this start called: Cafasso_20 (DZ), ModicumRichard_20 (DZ), ObLaDi_20 (DZ),

Start 41:

- Found in 1 of 158 (0.6%) of genes in pham
- No Manual Annotations of this start.
- Called 100.0% of time when present
- Phage (with cluster) where this start called: GMA3_25 (DF2),

Start 42:

- Found in 5 of 158 (3.2%) of genes in pham
- Manual Annotations of this start: 5 of 148
- Called 100.0% of time when present
- Phage (with cluster) where this start called: Nilo_93 (R), Papyrus_90 (R), Riparian_92 (R), Weiss13_90 (R), Zenon_92 (R),

Start 43:

- Found in 4 of 158 (2.5%) of genes in pham
- Manual Annotations of this start: 2 of 148
- Called 100.0% of time when present
- Phage (with cluster) where this start called: Amo99_3 (CP), ColdSoup_3 (CP), Jollymon_3 (CP), Sting_3 (CP),

Start 45:

- Found in 4 of 158 (2.5%) of genes in pham
- Manual Annotations of this start: 1 of 148
- Called 100.0% of time when present
- Phage (with cluster) where this start called: Argena_96 (DQ), ChisanaKitsune_96 (DQ), Farrylous_96 (DQ), MintFritos_94 (DQ),

Start 57:

- Found in 1 of 158 (0.6%) of genes in pham
- No Manual Annotations of this start.
- Called 100.0% of time when present
- Phage (with cluster) where this start called: Poochiewood_75 (L1),

Start 64:

- Found in 1 of 158 (0.6%) of genes in pham

- Manual Annotations of this start: 1 of 148
- Called 100.0% of time when present
- Phage (with cluster) where this start called: Finch_82 (singleton),

Start 65:

- Found in 4 of 158 (2.5%) of genes in pham
- Manual Annotations of this start: 4 of 148
- Called 100.0% of time when present
- Phage (with cluster) where this start called: Bradissa_67 (CY1), EnalisNailo_66 (CY1), Lilas_67 (CY1), LordFarquaad_67 (CZ2),

Summary by clusters:

There are 16 clusters represented in this pham: singleton, E, CZ2, EG, L1, CY1, DF2, FB, R, DZ, GB, BD2, AY, CP, DL, DQ,

Info for manual annotations of cluster AY:

- Start number 31 was manually annotated 1 time for cluster AY.
- Start number 33 was manually annotated 1 time for cluster AY.

Info for manual annotations of cluster BD2:

- Start number 25 was manually annotated 1 time for cluster BD2.

Info for manual annotations of cluster CP:

- Start number 43 was manually annotated 2 times for cluster CP.

Info for manual annotations of cluster CY1:

- Start number 65 was manually annotated 3 times for cluster CY1.

Info for manual annotations of cluster CZ2:

- Start number 65 was manually annotated 1 time for cluster CZ2.

Info for manual annotations of cluster DL:

- Start number 34 was manually annotated 1 time for cluster DL.

Info for manual annotations of cluster DQ:

- Start number 45 was manually annotated 1 time for cluster DQ.

Info for manual annotations of cluster DZ:

- Start number 39 was manually annotated 3 times for cluster DZ.

Info for manual annotations of cluster E:

- Start number 38 was manually annotated 122 times for cluster E.

Info for manual annotations of cluster FB:

- Start number 34 was manually annotated 2 times for cluster FB.

Info for manual annotations of cluster GB:

- Start number 33 was manually annotated 3 times for cluster GB.

Info for manual annotations of cluster R:

•Start number 42 was manually annotated 5 times for cluster R.

Gene Information:

Gene: 244_106 Start: 61588, Stop: 61878, Start Num: 38

Candidate Starts for 244_106:

(Start: 38 @61588 has 122 MA's), (67, 61717), (76, 61741), (86, 61801), (92, 61849),

Gene: ABCat_103 Start: 62792, Stop: 63082, Start Num: 38

Candidate Starts for ABCat_103:

(Start: 38 @62792 has 122 MA's), (67, 62921), (76, 62945), (86, 63005), (92, 63053),

Gene: Adnama_110 Start: 62081, Stop: 62371, Start Num: 38

Candidate Starts for Adnama_110:

(Start: 38 @62081 has 122 MA's), (67, 62210), (76, 62234), (86, 62294), (92, 62342),

Gene: Amao_106 Start: 62234, Stop: 62521, Start Num: 38

Candidate Starts for Amao_106:

(Start: 38 @62234 has 122 MA's), (67, 62363), (76, 62387), (86, 62447), (92, 62495),

Gene: Amo99_3 Start: 2875, Stop: 3255, Start Num: 43

Candidate Starts for Amo99_3:

(Start: 43 @2875 has 2 MA's), (61, 2959), (68, 2992), (77, 3019), (81, 3031), (82, 3034), (95, 3145), (101, 3181), (105, 3235), (106, 3244),

Gene: Argena_96 Start: 72813, Stop: 73226, Start Num: 45

Candidate Starts for Argena_96:

(30, 72738), (36, 72756), (Start: 45 @72813 has 1 MA's), (67, 72909), (77, 72936), (81, 72948), (82, 72951), (88, 72999),

Gene: Argent26_110 Start: 62005, Stop: 62295, Start Num: 38

Candidate Starts for Argent26_110:

(Start: 38 @62005 has 122 MA's), (67, 62134), (76, 62158), (86, 62218), (92, 62266),

Gene: Asriel_104 Start: 60418, Stop: 60708, Start Num: 38

Candidate Starts for Asriel_104:

(Start: 38 @60418 has 122 MA's), (67, 60547), (76, 60571), (86, 60631), (92, 60679),

Gene: BaboJay_105 Start: 62761, Stop: 63051, Start Num: 38

Candidate Starts for BaboJay_105:

(Start: 38 @62761 has 122 MA's), (76, 62914), (86, 62974), (92, 63022),

Gene: BadStone_103 Start: 62340, Stop: 62630, Start Num: 38

Candidate Starts for BadStone_103:

(Start: 38 @62340 has 122 MA's), (67, 62469), (76, 62493), (86, 62553), (92, 62601),

Gene: Balomoji_106 Start: 62201, Stop: 62491, Start Num: 38

Candidate Starts for Balomoji_106:

(Start: 38 @62201 has 122 MA's), (67, 62330), (76, 62354), (86, 62414), (92, 62462),

Gene: Barbarian_105 Start: 60418, Stop: 60708, Start Num: 38

Candidate Starts for Barbarian_105:

(Start: 38 @60418 has 122 MA's), (67, 60547), (76, 60571), (86, 60631), (92, 60679),

Gene: BarnCat_84 Start: 47542, Stop: 47033, Start Num: 33

Candidate Starts for BarnCat_84:

(Start: 33 @47542 has 5 MA's), (67, 47371), (69, 47365), (76, 47335), (85, 47281), (91, 47233),

Gene: Bask21_106 Start: 61036, Stop: 61323, Start Num: 38

Candidate Starts for Bask21_106:

(Start: 38 @61036 has 122 MA's), (67, 61165), (76, 61189), (86, 61249), (92, 61297),

Gene: Bench_108 Start: 62762, Stop: 63052, Start Num: 38

Candidate Starts for Bench_108:

(Start: 38 @62762 has 122 MA's), (67, 62891), (76, 62915), (86, 62975), (92, 63023),

Gene: BigBubba_106 Start: 61114, Stop: 61404, Start Num: 38

Candidate Starts for BigBubba_106:

(Start: 38 @61114 has 122 MA's), (67, 61243), (76, 61267), (86, 61327), (92, 61375),

Gene: Bradissa_67 Start: 46915, Stop: 47334, Start Num: 65

Candidate Starts for Bradissa_67:

(17, 46627), (40, 46789), (50, 46852), (54, 46867), (60, 46876), (Start: 65 @46915 has 4 MA's), (70, 46927), (78, 46957), (93, 47056), (94, 47062), (108, 47200),

Gene: Bruin_103 Start: 61446, Stop: 61736, Start Num: 38

Candidate Starts for Bruin_103:

(Start: 38 @61446 has 122 MA's), (67, 61575), (76, 61599), (86, 61659), (92, 61707),

Gene: Buck_107 Start: 63262, Stop: 63552, Start Num: 38

Candidate Starts for Buck_107:

(Start: 38 @63262 has 122 MA's), (67, 63391), (76, 63415), (86, 63475), (92, 63523),

Gene: Budgie_114 Start: 62448, Stop: 62732, Start Num: 38

Candidate Starts for Budgie_114:

(Start: 38 @62448 has 122 MA's), (67, 62577), (76, 62601), (86, 62661),

Gene: Cactus_110 Start: 61700, Stop: 61990, Start Num: 38

Candidate Starts for Cactus_110:

(Start: 38 @61700 has 122 MA's), (67, 61829), (76, 61853), (86, 61913), (92, 61961),

Gene: Cafasso_20 Start: 18713, Stop: 18225, Start Num: 39

Candidate Starts for Cafasso_20:

(10, 19079), (18, 18863), (21, 18806), (24, 18794), (Start: 39 @18713 has 3 MA's), (55, 18629), (62, 18605), (68, 18569), (71, 18560), (81, 18521), (83, 18515), (96, 18401), (97, 18395), (98, 18392), (104, 18314),

Gene: Cassita_88 Start: 48685, Stop: 48176, Start Num: 33

Candidate Starts for Cassita_88:

(Start: 33 @48685 has 5 MA's), (69, 48508), (76, 48478), (85, 48424), (91, 48376),

Gene: ChisanaKitsune_96 Start: 72440, Stop: 72853, Start Num: 45

Candidate Starts for ChisanaKitsune_96:

(30, 72365), (36, 72383), (Start: 45 @72440 has 1 MA's), (67, 72536), (77, 72563), (81, 72575), (82, 72578), (88, 72626),

Gene: ChosenOne_106 Start: 61646, Stop: 61936, Start Num: 38

Candidate Starts for ChosenOne_106:

(Start: 38 @61646 has 122 MA's), (67, 61775), (76, 61799), (86, 61859), (92, 61907),

Gene: ChotaBhai_106 Start: 62098, Stop: 62385, Start Num: 38

Candidate Starts for ChotaBhai_106:

(Start: 38 @62098 has 122 MA's), (67, 62227), (76, 62251), (86, 62311), (92, 62359),

Gene: Cjw1_106 Start: 63455, Stop: 63745, Start Num: 38

Candidate Starts for Cjw1_106:

(Start: 38 @63455 has 122 MA's), (67, 63584), (76, 63608), (86, 63668), (92, 63716),

Gene: ColdSoup_3 Start: 2875, Stop: 3255, Start Num: 43

Candidate Starts for ColdSoup_3:

(Start: 43 @2875 has 2 MA's), (61, 2959), (68, 2992), (77, 3019), (81, 3031), (82, 3034), (95, 3145), (101, 3181), (105, 3235), (106, 3244),

Gene: Command613_108 Start: 62194, Stop: 62484, Start Num: 38

Candidate Starts for Command613_108:

(Start: 38 @62194 has 122 MA's), (67, 62323), (76, 62347), (86, 62407), (92, 62455),

Gene: Contagion_102 Start: 61808, Stop: 62098, Start Num: 38

Candidate Starts for Contagion_102:

(Start: 38 @61808 has 122 MA's), (67, 61937), (76, 61961), (86, 62021), (92, 62069),

Gene: Cookies_103 Start: 61964, Stop: 62251, Start Num: 38

Candidate Starts for Cookies_103:

(Start: 38 @61964 has 122 MA's), (67, 62093), (76, 62117), (86, 62177), (92, 62225),

Gene: CrystalP_105 Start: 62698, Stop: 62988, Start Num: 38

Candidate Starts for CrystalP_105:

(Start: 38 @62698 has 122 MA's), (67, 62827), (76, 62851), (86, 62911), (92, 62959),

Gene: Czyszczone1_106 Start: 61801, Stop: 62091, Start Num: 38

Candidate Starts for Czyszczone1_106:

(Start: 38 @61801 has 122 MA's), (67, 61930), (76, 61954), (86, 62014), (92, 62062),

Gene: DoctorDiddles_105 Start: 61466, Stop: 61753, Start Num: 38

Candidate Starts for DoctorDiddles_105:

(Start: 38 @61466 has 122 MA's), (67, 61595), (76, 61619), (86, 61679), (92, 61727),

Gene: DrDrey_106 Start: 63478, Stop: 63768, Start Num: 38

Candidate Starts for DrDrey_106:

(Start: 38 @63478 has 122 MA's), (67, 63607), (76, 63631), (86, 63691), (92, 63739),

Gene: Dumbo_105 Start: 61838, Stop: 62128, Start Num: 38

Candidate Starts for Dumbo_105:

(Start: 38 @61838 has 122 MA's), (67, 61967), (76, 61991), (86, 62051), (92, 62099),

Gene: Dusk_103 Start: 62000, Stop: 62290, Start Num: 38

Candidate Starts for Dusk_103:

(Start: 38 @62000 has 122 MA's), (67, 62129), (76, 62153), (86, 62213), (92, 62261),

Gene: Easy2Say_106 Start: 62472, Stop: 62762, Start Num: 38

Candidate Starts for Easy2Say_106:

(Start: 38 @62472 has 122 MA's), (67, 62601), (76, 62625), (86, 62685), (92, 62733),

Gene: Elite2014_105 Start: 61645, Stop: 61935, Start Num: 38

Candidate Starts for Elite2014_105:

(Start: 38 @61645 has 122 MA's), (67, 61774), (76, 61798), (86, 61858), (92, 61906),

Gene: Elph10_105 Start: 61484, Stop: 61774, Start Num: 38

Candidate Starts for Elph10_105:

(Start: 38 @61484 has 122 MA's), (67, 61613), (76, 61637), (86, 61697), (92, 61745),

Gene: Emmina_106 Start: 61423, Stop: 61713, Start Num: 38

Candidate Starts for Emmina_106:

(Start: 38 @61423 has 122 MA's), (67, 61552), (76, 61576), (86, 61636), (92, 61684),

Gene: EnalisNailo_66 Start: 46449, Stop: 46868, Start Num: 65

Candidate Starts for EnalisNailo_66:

(17, 46161), (40, 46323), (50, 46386), (54, 46401), (60, 46410), (Start: 65 @46449 has 4 MA's), (70, 46461), (78, 46491), (93, 46590), (94, 46596), (108, 46734),

Gene: Eureka_105 Start: 62611, Stop: 62901, Start Num: 38

Candidate Starts for Eureka_105:

(Start: 38 @62611 has 122 MA's), (67, 62740), (76, 62764), (86, 62824), (92, 62872),

Gene: Farrylious_96 Start: 72578, Stop: 72991, Start Num: 45

Candidate Starts for Farrylious_96:

(30, 72503), (36, 72521), (Start: 45 @72578 has 1 MA's), (67, 72674), (77, 72701), (81, 72713), (82, 72716), (88, 72764),

Gene: Filch_107 Start: 61797, Stop: 62087, Start Num: 38

Candidate Starts for Filch_107:

(Start: 38 @61797 has 122 MA's), (67, 61926), (76, 61950), (86, 62010), (92, 62058),

Gene: Finch_82 Start: 71334, Stop: 71777, Start Num: 64

Candidate Starts for Finch_82:

(48, 71253), (55, 71289), (Start: 64 @71334 has 1 MA's), (78, 71382), (95, 71505), (96, 71508), (103, 71559), (107, 71625), (111, 71655),

Gene: Finch_186 Start: 111122, Stop: 111628, Start Num: 33

Candidate Starts for Finch_186:

(Start: 33 @111122 has 5 MA's), (61, 111254), (74, 111326), (79, 111341), (82, 111350),

Gene: FireRed_109 Start: 62887, Stop: 63177, Start Num: 38

Candidate Starts for FireRed_109:

(Start: 38 @62887 has 122 MA's), (67, 63016), (76, 63040), (86, 63100), (92, 63148),

Gene: Flypotenuse_102 Start: 61072, Stop: 61362, Start Num: 38

Candidate Starts for Flypotenuse_102:

(Start: 38 @61072 has 122 MA's), (67, 61201), (76, 61225), (86, 61285), (92, 61333),

Gene: GMA3_25 Start: 35593, Stop: 36075, Start Num: 41
Candidate Starts for GMA3_25:
(41, 35593), (52, 35656), (66, 35722), (73, 35743), (80, 35764), (83, 35773), (86, 35809), (110, 36034),

Gene: Gage_108 Start: 62143, Stop: 62433, Start Num: 38
Candidate Starts for Gage_108:
(Start: 38 @62143 has 122 MA's), (67, 62272), (76, 62296), (86, 62356), (92, 62404),

Gene: Gator_104 Start: 61931, Stop: 62218, Start Num: 38
Candidate Starts for Gator_104:
(Start: 38 @61931 has 122 MA's), (67, 62060), (76, 62084), (86, 62144), (92, 62192),

Gene: Gemini_111 Start: 62522, Stop: 62812, Start Num: 38
Candidate Starts for Gemini_111:
(Start: 38 @62522 has 122 MA's), (67, 62651), (76, 62675), (86, 62735), (92, 62783),

Gene: Glexan_105 Start: 62202, Stop: 62492, Start Num: 38
Candidate Starts for Glexan_105:
(Start: 38 @62202 has 122 MA's), (67, 62331), (76, 62355), (86, 62415), (92, 62463),

Gene: Globfish_58 Start: 33704, Stop: 34201, Start Num: 33
Candidate Starts for Globfish_58:
(19, 33614), (22, 33644), (28, 33692), (Start: 33 @33704 has 5 MA's), (Start: 34 @33707 has 3 MA's),
(49, 33788), (56, 33818), (63, 33851), (74, 33896), (82, 33917), (88, 33965), (100, 34058),

Gene: Globfish_84 Start: 46529, Stop: 47017, Start Num: 31
Candidate Starts for Globfish_84:
(27, 46508), (Start: 31 @46529 has 1 MA's), (44, 46586), (46, 46604), (59, 46646), (77, 46721), (113, 47006),

Gene: Goku_105 Start: 62340, Stop: 62630, Start Num: 38
Candidate Starts for Goku_105:
(Start: 38 @62340 has 122 MA's), (67, 62469), (76, 62493), (86, 62553), (92, 62601),

Gene: GoldenSpark_110 Start: 62005, Stop: 62295, Start Num: 38
Candidate Starts for GoldenSpark_110:
(Start: 38 @62005 has 122 MA's), (67, 62134), (76, 62158), (86, 62218), (92, 62266),

Gene: Goldilocks_109 Start: 61901, Stop: 62191, Start Num: 38
Candidate Starts for Goldilocks_109:
(Start: 38 @61901 has 122 MA's), (67, 62030), (76, 62054), (86, 62114), (92, 62162),

Gene: GooberAzure_109 Start: 62005, Stop: 62295, Start Num: 38
Candidate Starts for GooberAzure_109:
(Start: 38 @62005 has 122 MA's), (67, 62134), (76, 62158), (86, 62218), (92, 62266),

Gene: HanKaySha_106 Start: 62193, Stop: 62483, Start Num: 38
Candidate Starts for HanKaySha_106:
(Start: 38 @62193 has 122 MA's), (67, 62322), (76, 62346), (86, 62406), (92, 62454),

Gene: Hank144_56 Start: 39762, Stop: 39295, Start Num: 25
Candidate Starts for Hank144_56:

(Start: 25 @39762 has 1 MA's), (Start: 38 @39693 has 122 MA's), (51, 39615), (53, 39609), (67, 39561), (68, 39558), (77, 39531), (106, 39306),

Gene: Harella_106 Start: 62718, Stop: 63008, Start Num: 38

Candidate Starts for Harella_106:

(Start: 38 @62718 has 122 MA's), (67, 62847), (76, 62871), (86, 62931), (92, 62979),

Gene: Henry_103 Start: 62003, Stop: 62293, Start Num: 38

Candidate Starts for Henry_103:

(Start: 38 @62003 has 122 MA's), (67, 62132), (76, 62156), (86, 62216), (92, 62264),

Gene: Highbury_102 Start: 60350, Stop: 60640, Start Num: 38

Candidate Starts for Highbury_102:

(Start: 38 @60350 has 122 MA's), (67, 60479), (76, 60503), (86, 60563), (92, 60611),

Gene: Holt_111 Start: 62419, Stop: 62709, Start Num: 38

Candidate Starts for Holt_111:

(Start: 38 @62419 has 122 MA's), (67, 62548), (76, 62572), (86, 62632), (92, 62680),

Gene: Hoonter_109 Start: 62498, Stop: 62788, Start Num: 38

Candidate Starts for Hoonter_109:

(Start: 38 @62498 has 122 MA's), (67, 62627), (76, 62651), (86, 62711), (92, 62759),

Gene: Hokey_106 Start: 62804, Stop: 63094, Start Num: 38

Candidate Starts for Hokey_106:

(Start: 38 @62804 has 122 MA's), (67, 62933), (76, 62957), (86, 63017), (92, 63065),

Gene: HufflyPuff_108 Start: 63113, Stop: 63403, Start Num: 38

Candidate Starts for HufflyPuff_108:

(Start: 38 @63113 has 122 MA's), (67, 63242), (76, 63266), (86, 63326), (92, 63374),

Gene: IHOP_104 Start: 61721, Stop: 62011, Start Num: 38

Candidate Starts for IHOP_104:

(Start: 38 @61721 has 122 MA's), (67, 61850), (76, 61874), (86, 61934), (92, 61982),

Gene: Icee_107 Start: 61529, Stop: 61819, Start Num: 38

Candidate Starts for Icee_107:

(Start: 38 @61529 has 122 MA's), (67, 61658), (76, 61682), (86, 61742), (92, 61790),

Gene: Inca_103 Start: 60210, Stop: 60500, Start Num: 38

Candidate Starts for Inca_103:

(Start: 38 @60210 has 122 MA's), (67, 60339), (76, 60363), (86, 60423), (92, 60471),

Gene: JeTaime_104 Start: 61629, Stop: 61919, Start Num: 38

Candidate Starts for JeTaime_104:

(Start: 38 @61629 has 122 MA's), (67, 61758), (76, 61782), (86, 61842), (92, 61890),

Gene: Jollymon_3 Start: 2875, Stop: 3255, Start Num: 43

Candidate Starts for Jollymon_3:

(Start: 43 @2875 has 2 MA's), (61, 2959), (68, 2992), (77, 3019), (81, 3031), (82, 3034), (95, 3145), (101, 3181), (105, 3235), (106, 3244),

Gene: Kanye_103 Start: 62254, Stop: 62544, Start Num: 38

Candidate Starts for Kanye_103:

(Start: 38 @62254 has 122 MA's), (67, 62383), (76, 62407), (86, 62467), (92, 62515),

Gene: Kimchi_110 Start: 62146, Stop: 62436, Start Num: 38

Candidate Starts for Kimchi_110:

(Start: 38 @62146 has 122 MA's), (67, 62275), (76, 62299), (86, 62359), (92, 62407),

Gene: Kostya_106 Start: 61823, Stop: 62113, Start Num: 38

Candidate Starts for Kostya_106:

(Start: 38 @61823 has 122 MA's), (67, 61952), (76, 61976), (86, 62036), (92, 62084),

Gene: LeeroyJenkins_94 Start: 49860, Stop: 49351, Start Num: 33

Candidate Starts for LeeroyJenkins_94:

(Start: 33 @49860 has 5 MA's), (67, 49689), (69, 49683), (76, 49653), (85, 49599), (91, 49551),

Gene: Lilac_107 Start: 62947, Stop: 63237, Start Num: 38

Candidate Starts for Lilac_107:

(Start: 38 @62947 has 122 MA's), (67, 63076), (76, 63100), (86, 63160), (92, 63208),

Gene: Lilas_67 Start: 47987, Stop: 48406, Start Num: 65

Candidate Starts for Lilas_67:

(17, 47699), (40, 47861), (50, 47924), (54, 47939), (60, 47948), (Start: 65 @47987 has 4 MA's), (70, 47999), (78, 48029), (93, 48128), (94, 48134), (108, 48272),

Gene: Lilizi_106 Start: 62233, Stop: 62523, Start Num: 38

Candidate Starts for Lilizi_106:

(Start: 38 @62233 has 122 MA's), (67, 62362), (76, 62386), (86, 62446), (92, 62494),

Gene: Lilpickle_105 Start: 61645, Stop: 61935, Start Num: 38

Candidate Starts for Lilpickle_105:

(Start: 38 @61645 has 122 MA's), (67, 61774), (76, 61798), (86, 61858), (92, 61906),

Gene: LordFarquaad_67 Start: 43212, Stop: 43631, Start Num: 65

Candidate Starts for LordFarquaad_67:

(40, 43086), (47, 43128), (50, 43149), (60, 43173), (Start: 65 @43212 has 4 MA's), (70, 43224), (78, 43254), (94, 43359), (108, 43497),

Gene: MISSy_107 Start: 62930, Stop: 63220, Start Num: 38

Candidate Starts for MISSy_107:

(Start: 38 @62930 has 122 MA's), (67, 63059), (76, 63083), (86, 63143), (92, 63191),

Gene: MPhalcon_107 Start: 62348, Stop: 62638, Start Num: 38

Candidate Starts for MPhalcon_107:

(Start: 38 @62348 has 122 MA's), (67, 62477), (76, 62501), (86, 62561), (92, 62609),

Gene: MadamMonkfish_105 Start: 61655, Stop: 61945, Start Num: 38

Candidate Starts for MadamMonkfish_105:

(Start: 38 @61655 has 122 MA's), (67, 61784), (76, 61808), (86, 61868), (92, 61916),

Gene: Manda_107 Start: 62385, Stop: 62675, Start Num: 38

Candidate Starts for Manda_107:

(Start: 38 @62385 has 122 MA's), (67, 62514), (76, 62538), (86, 62598), (92, 62646),

Gene: Marshmallow_103 Start: 62343, Stop: 62633, Start Num: 38
Candidate Starts for Marshmallow_103:
(Start: 38 @62343 has 122 MA's), (67, 62472), (76, 62496), (86, 62556), (92, 62604),

Gene: Maxxinista_107 Start: 62132, Stop: 62422, Start Num: 38
Candidate Starts for Maxxinista_107:
(Start: 38 @62132 has 122 MA's), (67, 62261), (76, 62285), (86, 62345), (92, 62393),

Gene: Mila11_96 Start: 59511, Stop: 59011, Start Num: 31
Candidate Starts for Mila11_96:
(12, 59790), (13, 59787), (15, 59730), (16, 59670), (26, 59538), (Start: 31 @59511 has 1 MA's), (35, 59499), (37, 59490), (75, 59310), (81, 59292), (89, 59232),

Gene: Mindy_105 Start: 61664, Stop: 61954, Start Num: 38
Candidate Starts for Mindy_105:
(Start: 38 @61664 has 122 MA's), (67, 61793), (76, 61817), (86, 61877), (92, 61925),

Gene: Miniwave_101 Start: 61841, Stop: 62131, Start Num: 38
Candidate Starts for Miniwave_101:
(Start: 38 @61841 has 122 MA's), (67, 61970), (76, 61994), (86, 62054), (92, 62102),

Gene: MintFritos_94 Start: 72730, Stop: 73143, Start Num: 45
Candidate Starts for MintFritos_94:
(30, 72655), (36, 72673), (Start: 45 @72730 has 1 MA's), (67, 72826), (77, 72853), (81, 72865), (82, 72868), (88, 72916),

Gene: Misfit_107 Start: 63444, Stop: 63734, Start Num: 38
Candidate Starts for Misfit_107:
(Start: 38 @63444 has 122 MA's), (67, 63573), (76, 63597), (86, 63657), (92, 63705),

Gene: ModicumRichard_20 Start: 18713, Stop: 18225, Start Num: 39
Candidate Starts for ModicumRichard_20:
(4, 19316), (5, 19235), (6, 19211), (7, 19175), (8, 19145), (9, 19130), (14, 18977), (18, 18863), (21, 18806), (23, 18797), (24, 18794), (Start: 39 @18713 has 3 MA's), (55, 18629), (62, 18605), (71, 18560), (77, 18533), (81, 18521), (83, 18515), (97, 18395),

Gene: Moldemort_108 Start: 62113, Stop: 62403, Start Num: 38
Candidate Starts for Moldemort_108:
(Start: 38 @62113 has 122 MA's), (67, 62242), (76, 62266), (86, 62326), (92, 62374),

Gene: Mosby_102 Start: 61808, Stop: 62098, Start Num: 38
Candidate Starts for Mosby_102:
(Start: 38 @61808 has 122 MA's), (67, 61937), (76, 61961), (86, 62021), (92, 62069),

Gene: Murica_109 Start: 64147, Stop: 64437, Start Num: 38
Candidate Starts for Murica_109:
(Start: 38 @64147 has 122 MA's), (67, 64276), (76, 64300), (86, 64360), (92, 64408),

Gene: Murphy_105 Start: 62505, Stop: 62795, Start Num: 38
Candidate Starts for Murphy_105:
(Start: 38 @62505 has 122 MA's), (67, 62634), (76, 62658), (86, 62718), (92, 62766),

Gene: Myrale_106 Start: 62482, Stop: 62772, Start Num: 38

Candidate Starts for Myrale_106:

(Start: 38 @62482 has 122 MA's), (67, 62611), (76, 62635), (86, 62695), (92, 62743),

Gene: Nala_108 Start: 62857, Stop: 63147, Start Num: 38

Candidate Starts for Nala_108:

(Start: 38 @62857 has 122 MA's), (67, 62986), (76, 63010), (86, 63070), (92, 63118),

Gene: NelitzaMV_103 Start: 60830, Stop: 61120, Start Num: 38

Candidate Starts for NelitzaMV_103:

(Start: 38 @60830 has 122 MA's), (67, 60959), (76, 60983), (86, 61043), (92, 61091),

Gene: Nilo_93 Start: 65105, Stop: 65443, Start Num: 42

Candidate Starts for Nilo_93:

(Start: 42 @65105 has 5 MA's), (102, 65426),

Gene: Nimrod_106 Start: 62491, Stop: 62781, Start Num: 38

Candidate Starts for Nimrod_106:

(Start: 38 @62491 has 122 MA's), (67, 62620), (76, 62644), (86, 62704), (92, 62752),

Gene: NoSleep_106 Start: 61665, Stop: 61955, Start Num: 38

Candidate Starts for NoSleep_106:

(Start: 38 @61665 has 122 MA's), (67, 61794), (76, 61818), (86, 61878), (92, 61926),

Gene: ObLaDi_20 Start: 18692, Stop: 18204, Start Num: 39

Candidate Starts for ObLaDi_20:

(1, 19712), (2, 19706), (3, 19688), (4, 19295), (5, 19214), (6, 19190), (7, 19154), (8, 19124), (9, 19109), (14, 18956), (18, 18842), (21, 18785), (23, 18776), (24, 18773), (Start: 39 @18692 has 3 MA's), (55, 18608), (62, 18584), (71, 18539), (77, 18512), (81, 18500), (83, 18494), (97, 18374),

Gene: OrionPax_104 Start: 61738, Stop: 62028, Start Num: 38

Candidate Starts for OrionPax_104:

(Start: 38 @61738 has 122 MA's), (67, 61867), (76, 61891), (86, 61951), (92, 61999),

Gene: Paperbeatsrock_105 Start: 62519, Stop: 62809, Start Num: 38

Candidate Starts for Paperbeatsrock_105:

(Start: 38 @62519 has 122 MA's), (67, 62648), (76, 62672), (86, 62732), (92, 62780),

Gene: Papyrus_90 Start: 64039, Stop: 64377, Start Num: 42

Candidate Starts for Papyrus_90:

(Start: 42 @64039 has 5 MA's), (102, 64360),

Gene: Pat3_103 Start: 61036, Stop: 61323, Start Num: 38

Candidate Starts for Pat3_103:

(Start: 38 @61036 has 122 MA's), (67, 61165), (76, 61189), (86, 61249), (92, 61297),

Gene: Phaja_104 Start: 61723, Stop: 62013, Start Num: 38

Candidate Starts for Phaja_104:

(Start: 38 @61723 has 122 MA's), (67, 61852), (76, 61876), (86, 61936), (92, 61984),

Gene: Pharsalus_103 Start: 62218, Stop: 62508, Start Num: 38

Candidate Starts for Pharsalus_103:

(Start: 38 @62218 has 122 MA's), (67, 62347), (76, 62371), (86, 62431), (92, 62479),

Gene: PhatBacter_109 Start: 62887, Stop: 63177, Start Num: 38
Candidate Starts for PhatBacter_109:
(Start: 38 @62887 has 122 MA's), (67, 63016), (76, 63040), (86, 63100), (92, 63148),

Gene: Phaux_108 Start: 63447, Stop: 63737, Start Num: 38
Candidate Starts for Phaux_108:
(Start: 38 @63447 has 122 MA's), (67, 63576), (76, 63600), (86, 63660), (92, 63708),

Gene: Phrux_102 Start: 61525, Stop: 61815, Start Num: 38
Candidate Starts for Phrux_102:
(Start: 38 @61525 has 122 MA's), (67, 61654), (76, 61678), (86, 61738), (92, 61786),

Gene: Poochiewood_75 Start: 51959, Stop: 52237, Start Num: 57
Candidate Starts for Poochiewood_75:
(20, 51758), (29, 51824), (32, 51833), (44, 51884), (46, 51902), (57, 51959), (58, 51962), (68, 52019),
(77, 52061), (80, 52070), (81, 52073), (86, 52118), (87, 52121),

Gene: Porky_104 Start: 61269, Stop: 61559, Start Num: 38
Candidate Starts for Porky_104:
(Start: 38 @61269 has 122 MA's), (67, 61398), (76, 61422), (86, 61482), (92, 61530),

Gene: Pumpkin_107 Start: 61865, Stop: 62155, Start Num: 38
Candidate Starts for Pumpkin_107:
(Start: 38 @61865 has 122 MA's), (67, 61994), (76, 62018), (86, 62078), (92, 62126),

Gene: Rakim_107 Start: 61934, Stop: 62221, Start Num: 38
Candidate Starts for Rakim_107:
(Start: 38 @61934 has 122 MA's), (67, 62063), (76, 62087), (86, 62147), (92, 62195),

Gene: Rimmer_104 Start: 62324, Stop: 62614, Start Num: 38
Candidate Starts for Rimmer_104:
(Start: 38 @62324 has 122 MA's), (67, 62453), (76, 62477), (86, 62537), (92, 62585),

Gene: Riparian_92 Start: 64551, Stop: 64889, Start Num: 42
Candidate Starts for Riparian_92:
(Start: 42 @64551 has 5 MA's), (102, 64872),

Gene: RiverMonster_105 Start: 62420, Stop: 62710, Start Num: 38
Candidate Starts for RiverMonster_105:
(Start: 38 @62420 has 122 MA's), (67, 62549), (76, 62573), (86, 62633), (92, 62681),

Gene: Rooter_42 Start: 26895, Stop: 27386, Start Num: 34
Candidate Starts for Rooter_42:
(11, 26580), (19, 26814), (28, 26880), (Start: 34 @26895 has 3 MA's), (69, 27060), (80, 27096), (82,
27102), (99, 27237), (105, 27309), (112, 27375),

Gene: Saints25_102 Start: 60350, Stop: 60640, Start Num: 38
Candidate Starts for Saints25_102:
(Start: 38 @60350 has 122 MA's), (67, 60479), (76, 60503), (86, 60563), (92, 60611),

Gene: Sarge_39 Start: 25703, Stop: 26194, Start Num: 34
Candidate Starts for Sarge_39:

(11, 25388), (19, 25622), (28, 25688), (Start: 34 @25703 has 3 MA's), (69, 25868), (80, 25904), (82, 25910), (99, 26045), (105, 26117), (112, 26183),

Gene: Sassay_101 Start: 60770, Stop: 61060, Start Num: 38

Candidate Starts for Sassay_101:

(Start: 38 @60770 has 122 MA's), (67, 60899), (76, 60923), (86, 60983), (92, 61031),

Gene: ShamWow_106 Start: 62698, Stop: 62988, Start Num: 38

Candidate Starts for ShamWow_106:

(Start: 38 @62698 has 122 MA's), (67, 62827), (76, 62851), (86, 62911), (92, 62959),

Gene: ShereKhan_104 Start: 63179, Stop: 63469, Start Num: 38

Candidate Starts for ShereKhan_104:

(Start: 38 @63179 has 122 MA's), (67, 63308), (76, 63332), (86, 63392), (92, 63440),

Gene: Shoya_45 Start: 27671, Stop: 28162, Start Num: 34

Candidate Starts for Shoya_45:

(19, 27590), (28, 27656), (Start: 34 @27671 has 3 MA's), (69, 27836), (80, 27872), (82, 27878), (99, 28013), (105, 28085), (112, 28151),

Gene: Simpliphy_104 Start: 61991, Stop: 62281, Start Num: 38

Candidate Starts for Simpliphy_104:

(Start: 38 @61991 has 122 MA's), (67, 62120), (76, 62144), (86, 62204), (92, 62252),

Gene: SirDuracell_106 Start: 61536, Stop: 61823, Start Num: 38

Candidate Starts for SirDuracell_106:

(Start: 38 @61536 has 122 MA's), (67, 61665), (76, 61689), (86, 61749), (92, 61797),

Gene: SophKB_104 Start: 61980, Stop: 62270, Start Num: 38

Candidate Starts for SophKB_104:

(Start: 38 @61980 has 122 MA's), (67, 62109), (76, 62133), (86, 62193), (92, 62241),

Gene: Sotrice96_107 Start: 62444, Stop: 62734, Start Num: 38

Candidate Starts for Sotrice96_107:

(Start: 38 @62444 has 122 MA's), (67, 62573), (76, 62597), (86, 62657), (92, 62705),

Gene: SpeedDemon_100 Start: 4893, Stop: 5351, Start Num: 34

Candidate Starts for SpeedDemon_100:

(Start: 34 @4893 has 3 MA's), (72, 5040), (74, 5055), (80, 5070), (84, 5109), (90, 5151), (98, 5199), (109, 5319),

Gene: Stank_108 Start: 62218, Stop: 62508, Start Num: 38

Candidate Starts for Stank_108:

(Start: 38 @62218 has 122 MA's), (67, 62347), (76, 62371), (86, 62431), (92, 62479),

Gene: Stark_106 Start: 62304, Stop: 62594, Start Num: 38

Candidate Starts for Stark_106:

(Start: 38 @62304 has 122 MA's), (67, 62433), (76, 62457), (86, 62517), (92, 62565),

Gene: StellaBean_105 Start: 62601, Stop: 62891, Start Num: 38

Candidate Starts for StellaBean_105:

(Start: 38 @62601 has 122 MA's), (67, 62730), (76, 62754), (86, 62814), (92, 62862),

Gene: Sting_3 Start: 2872, Stop: 3252, Start Num: 43
Candidate Starts for Sting_3:
(Start: 43 @2872 has 2 MA's), (61, 2956), (68, 2989), (77, 3016), (81, 3028), (82, 3031), (88, 3079),
(95, 3142), (101, 3178), (105, 3232), (106, 3241),

Gene: StolenFromERC_108 Start: 62143, Stop: 62433, Start Num: 38
Candidate Starts for StolenFromERC_108:
(Start: 38 @62143 has 122 MA's), (67, 62272), (76, 62296), (86, 62356), (92, 62404),

Gene: TBrady12_109 Start: 61655, Stop: 61945, Start Num: 38
Candidate Starts for TBrady12_109:
(Start: 38 @61655 has 122 MA's), (67, 61784), (76, 61808), (86, 61868), (92, 61916),

Gene: Tarkin_105 Start: 63044, Stop: 63334, Start Num: 38
Candidate Starts for Tarkin_105:
(Start: 38 @63044 has 122 MA's), (67, 63173), (76, 63197), (86, 63257), (92, 63305),

Gene: TeardropMSU_102 Start: 61546, Stop: 61836, Start Num: 38
Candidate Starts for TeardropMSU_102:
(Start: 38 @61546 has 122 MA's), (67, 61675), (76, 61699), (86, 61759), (92, 61807),

Gene: Teaspoon_106 Start: 62203, Stop: 62493, Start Num: 38
Candidate Starts for Teaspoon_106:
(Start: 38 @62203 has 122 MA's), (67, 62332), (76, 62356), (86, 62416), (92, 62464),

Gene: Terminus_109 Start: 63444, Stop: 63734, Start Num: 38
Candidate Starts for Terminus_109:
(Start: 38 @63444 has 122 MA's), (67, 63573), (76, 63597), (86, 63657), (92, 63705),

Gene: Thimble_108 Start: 61405, Stop: 61695, Start Num: 38
Candidate Starts for Thimble_108:
(Start: 38 @61405 has 122 MA's), (67, 61534), (76, 61558), (86, 61618), (92, 61666),

Gene: Thresher_107 Start: 63084, Stop: 63374, Start Num: 38
Candidate Starts for Thresher_107:
(Start: 38 @63084 has 122 MA's), (67, 63213), (76, 63237), (86, 63297), (92, 63345),

Gene: Tomaszewski_101 Start: 61982, Stop: 62272, Start Num: 38
Candidate Starts for Tomaszewski_101:
(Start: 38 @61982 has 122 MA's), (67, 62111), (76, 62135), (86, 62195), (92, 62243),

Gene: Toto_104 Start: 62698, Stop: 62988, Start Num: 38
Candidate Starts for Toto_104:
(Start: 38 @62698 has 122 MA's), (67, 62827), (76, 62851), (86, 62911), (92, 62959),

Gene: Traaww1_102 Start: 61247, Stop: 61537, Start Num: 38
Candidate Starts for Traaww1_102:
(Start: 38 @61247 has 122 MA's), (67, 61376), (76, 61400), (86, 61460), (92, 61508),

Gene: Tuco_107 Start: 63605, Stop: 63895, Start Num: 38
Candidate Starts for Tuco_107:
(Start: 38 @63605 has 122 MA's), (67, 63734), (76, 63758), (86, 63818), (92, 63866),

Gene: Ukulele_100 Start: 61803, Stop: 62093, Start Num: 38
Candidate Starts for Ukulele_100:
(Start: 38 @61803 has 122 MA's), (67, 61932), (76, 61956), (86, 62016), (92, 62064),

Gene: Weiss13_90 Start: 64788, Stop: 65126, Start Num: 42
Candidate Starts for Weiss13_90:
(Start: 42 @64788 has 5 MA's), (102, 65109),

Gene: Wiggin_108 Start: 61648, Stop: 61938, Start Num: 38
Candidate Starts for Wiggin_108:
(Start: 38 @61648 has 122 MA's), (67, 61777), (76, 61801), (86, 61861), (92, 61909),

Gene: Willez_101 Start: 60770, Stop: 61060, Start Num: 38
Candidate Starts for Willez_101:
(Start: 38 @60770 has 122 MA's), (67, 60899), (76, 60923), (86, 60983), (92, 61031),

Gene: YassJohnny_103 Start: 60791, Stop: 61081, Start Num: 38
Candidate Starts for YassJohnny_103:
(Start: 38 @60791 has 122 MA's), (67, 60920), (76, 60944), (86, 61004), (92, 61052),

Gene: Youngblood_109 Start: 62940, Stop: 63230, Start Num: 38
Candidate Starts for Youngblood_109:
(Start: 38 @62940 has 122 MA's), (67, 63069), (76, 63093), (86, 63153), (92, 63201),

Gene: Zenon_92 Start: 65114, Stop: 65452, Start Num: 42
Candidate Starts for Zenon_92:
(Start: 42 @65114 has 5 MA's), (102, 65435),

Gene: xkcd_109 Start: 63125, Stop: 63415, Start Num: 38
Candidate Starts for xkcd_109:
(Start: 38 @63125 has 122 MA's), (67, 63254), (76, 63278), (86, 63338), (92, 63386),