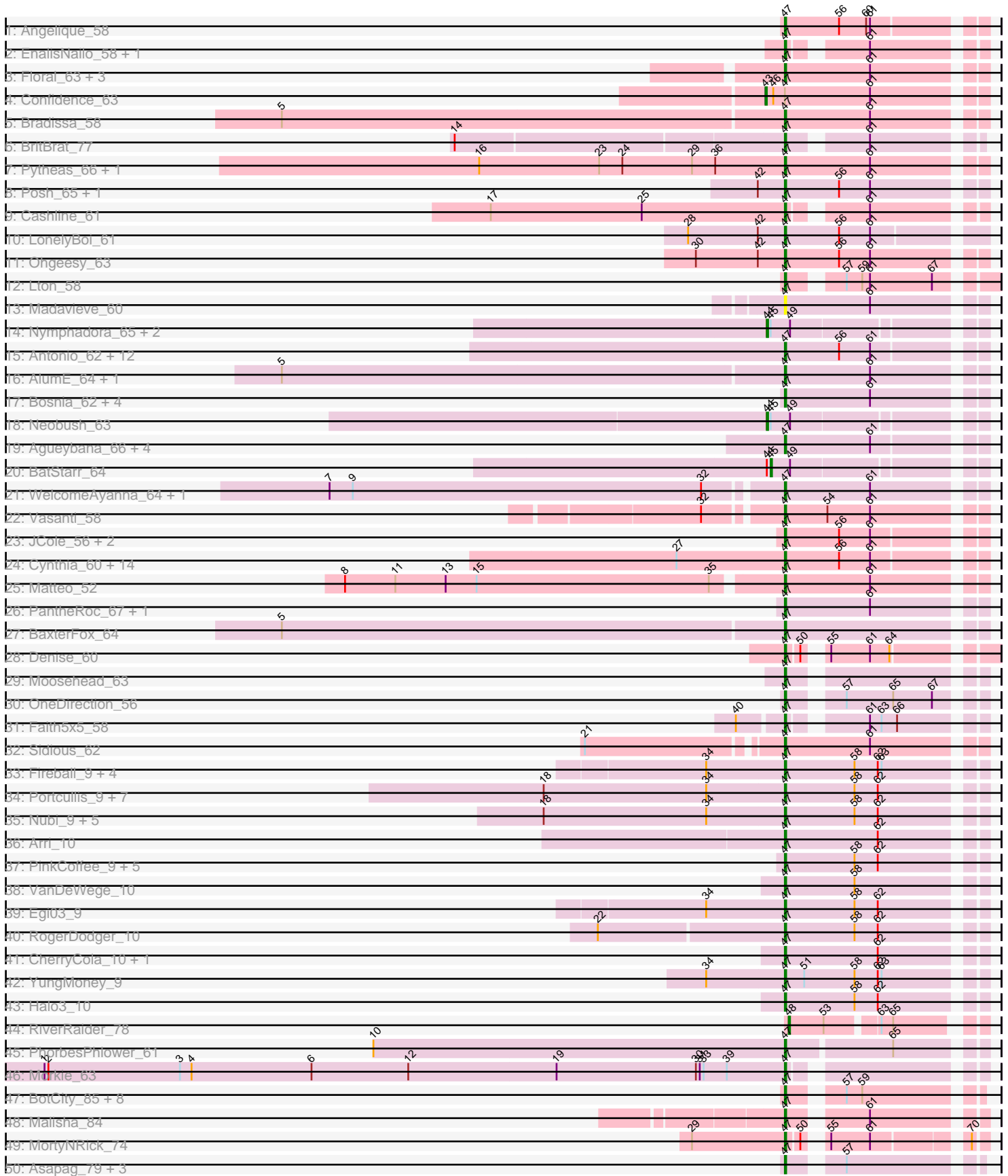
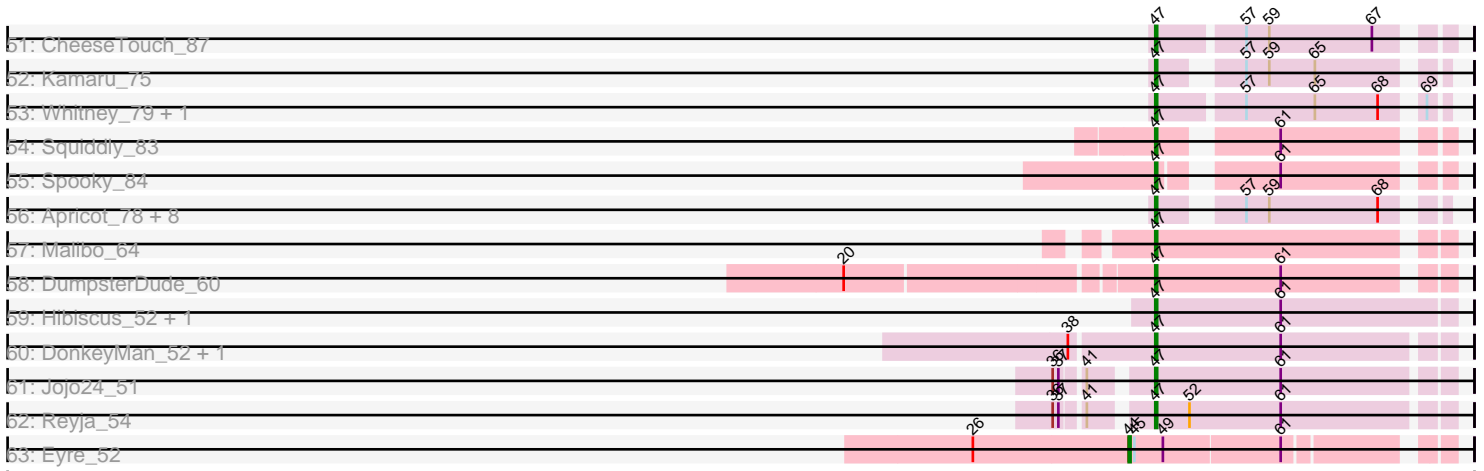


Pham 294486





Note: Tracks are now grouped by subcluster and scaled. Switching in subcluster is indicated by changes in track color. Track scale is now set by default to display the region 30 bp upstream of start 1 to 30 bp downstream of the last possible start. If this default region is judged to be packed too tightly with annotated starts, the track will be further scaled to only show that region of the ORF with annotated starts. This action will be indicated by adding "Zoomed" to the title. For starts, yellow indicates the location of called starts comprised solely of Glimmer/GeneMark auto-annotations, green indicates the location of called starts with at least 1 manual gene annotation.

Pham 294486 Report

This analysis was run 04/18/26 on database version 643.

Pham number 294486 has 154 members, 9 are drafts.

Phages represented in each track:

- Track 1 : Angelique_58
- Track 2 : EnalisNailo_58, Lilas_60
- Track 3 : Floral_63, EMsquaredA_62, Pollux_65, Marteena_61
- Track 4 : Confidence_63
- Track 5 : Bradissa_58
- Track 6 : BritBrat_77
- Track 7 : Pytheas_66, Jablanski_66
- Track 8 : Posh_65, Wrigley_67
- Track 9 : Cashline_61
- Track 10 : LonelyBoi_61
- Track 11 : Ohgeesy_63
- Track 12 : Lton_58
- Track 13 : Madavieve_60
- Track 14 : Nymphadora_65, Eviarto_65, TimTam_65
- Track 15 : Antonio_62, EdnaMode_56, Trumpet_62, Eudoria_62, Pickett_55, Polly_59, Kita_63, Suscepit_62, Tayonia_62, Zirinka_59, Manasvini_63, Zameen_62, Bialota_60
- Track 16 : AlumE_64, BoyNamedSue_64
- Track 17 : Bosnia_62, Herod_65, Hugley_63, Kuwabara_81, Jalleen_62
- Track 18 : Neobush_63
- Track 19 : Agueybana_66, FroggyToad_58, LordFarquaad_60, Attis_58, SoilAssassin_58
- Track 20 : BatStarr_64
- Track 21 : WelcomeAyanna_64, ThankyouJordi_64
- Track 22 : Vasanti_58
- Track 23 : JCole_56, Yeet412_57, BeeGee_68
- Track 24 : Cynthia_60, Bjanes7_57, TuertoX_60, Nettuno_56, Ebert_64, Sproutie_60, Whiteclaw_60, Clap_60, Gizermo_60, Mocha12_60, Lamberg_56, Sahara_59, GemG_60, Savage_60, Haley23_60
- Track 25 : Matteo_52
- Track 26 : PantheRoc_67, RavenCo17_60
- Track 27 : BaxterFox_64
- Track 28 : Denise_60
- Track 29 : Moosehead_63
- Track 30 : OneDirection_56
- Track 31 : Faith5x5_58
- Track 32 : Sidious_62

- Track 33 : Fireball_9, Wizard_9, Gezellig_9, PullumCavea_9, Phlop_9
- Track 34 : Portcullis_9, Savbucketdawg_9, Evamon_9, Togo_9, SmokingBunny_9, Salvador_9, TillyBobJoe_9, Jambalaya_9
- Track 35 : Nubi_9, CoveyB_9, Shinji_9, Danyall_9, Mutzi_9, Twister6_9
- Track 36 : Arri_10
- Track 37 : PinkCoffee_9, Fugax_9, ClamChowder_9, Bakery_10, KimmyK_9, Barb_9
- Track 38 : VanDeWege_10
- Track 39 : Egi03_9
- Track 40 : RogerDodger_10
- Track 41 : CherryCola_10, Valary_10
- Track 42 : YungMoney_9
- Track 43 : Halo3_10
- Track 44 : RiverRaider_78
- Track 45 : PhorbesPhlower_61
- Track 46 : Morkie_63
- Track 47 : BotCity_85, Pepperoni_57, BENtherdunthat_83, Lucky10_59, Lutum_84, Frickyeah_86, Holliday_83, Kenna_78, ODay_88
- Track 48 : Malisha_84
- Track 49 : MortyNRick_74
- Track 50 : Asapag_79, Budski_86, Birdsong_78, Phabuloso_88
- Track 51 : CheeseTouch_87
- Track 52 : Kamaru_75
- Track 53 : Whitney_79, Getalong_84
- Track 54 : Squiddly_83
- Track 55 : Spooky_84
- Track 56 : Apricot_78, Ecliptus_85, Leroy_80, LitninMcQueen_83, Horus_81, Periwinkle_90, ShawBrad_85, Phistory_78, Crater_79
- Track 57 : Malibo_64
- Track 58 : DumpsterDude_60
- Track 59 : Hibiscus_52, Heinz_51
- Track 60 : DonkeyMan_52, Tarzan_52
- Track 61 : Jojo24_51
- Track 62 : Reyja_54
- Track 63 : Eyre_52

Summary of Final Annotations (See graph section above for start numbers):

The start number called the most often in the published annotations is 47, it was called in 137 of the 145 non-draft genes in the pham.

Genes that call this "Most Annotated" start:

- Agueybana_66, AlumE_64, Angelique_58, Antonio_62, Apricot_78, Arri_10, Asapag_79, Attis_58, BENtherdunthat_83, Bakery_10, Barb_9, BaxterFox_64, BeeGee_68, Bialota_60, Birdsong_78, Bjaner7_57, Bosnia_62, BotCity_85, BoyNamedSue_64, Bradissa_58, BritBrat_77, Budski_86, Cashline_61, CheeseTouch_87, CherryCola_10, ClamChowder_9, Clap_60, CoveyB_9, Crater_79, Cynthia_60, Danyall_9, Denise_60, DonkeyMan_52, DumpsterDude_60, EMSquaredA_62, Ebert_64, Ecliptus_85, EdnaMode_56, Egi03_9, EnalisNailo_58, Eudoria_62, Evamon_9, Faith5x5_58, Fireball_9, Floral_63, Frickyeah_86,

FroggyToad_58, Fugax_9, GemG_60, Getalong_84, Gezellig_9, Gizermo_60, Haley23_60, Halo3_10, Heinz_51, Herod_65, Hibiscus_52, Holliday_83, Horus_81, Hugley_63, JCole_56, Jablanski_66, Jalleen_62, Jambalaya_9, Jojo24_51, Kamaru_75, Kenna_78, KimmyK_9, Kita_63, Kuwabara_81, Lamberg_56, Leroy_80, Lilas_60, LitninMcQueen_83, LonelyBoi_61, LordFarquaad_60, Lton_58, Lucky10_59, Lutum_84, Madavieve_60, Malibo_64, Malisha_84, Manasvini_63, Marteena_61, Matteo_52, Mocha12_60, Moosehead_63, Morkie_63, MortyNRick_74, Mutzi_9, Nettuno_56, Nubi_9, ODay_88, Ohgeesy_63, OneDirection_56, PantheRoc_67, Pepperoni_57, Periwinkle_90, Phabuloso_88, Phistory_78, Phlop_9, PhorbesPhlower_61, Pickett_55, PinkCoffee_9, Pollux_65, Polly_59, Portcullis_9, Posh_65, PullumCavea_9, Pytheas_66, RavenCo17_60, Reyja_54, RogerDodger_10, Sahara_59, Salvador_9, Savage_60, Savbucketdawg_9, ShawBrad_85, Shinji_9, Sidious_62, SmokingBunny_9, SoilAssassin_58, Spooky_84, Sproutie_60, Squiddly_83, Suscepit_62, Tarzan_52, Tayonia_62, ThankyouJordi_64, TillyBobJoe_9, Togo_9, Trumpet_62, TuertoX_60, Twister6_9, Valary_10, VanDeWege_10, Vasanti_58, WelcomeAyanna_64, Whiteclaw_60, Whitney_79, Wizard_9, Wrigley_67, Yeet412_57, YungMoney_9, Zameen_62, Zirinka_59,

Genes that have the "Most Annotated" start but do not call it:

- Confidence_63,

Genes that do not have the "Most Annotated" start:

- BatStarr_64, Eviarto_65, Eyre_52, Neobush_63, Nymphadora_65, RiverRaider_78, TimTam_65,

Summary by start number:

Start 43:

- Found in 1 of 154 (0.6%) of genes in pham
- Manual Annotations of this start: 1 of 145
- Called 100.0% of time when present
- Phage (with cluster) where this start called: Confidence_63 (CY1),

Start 44:

- Found in 6 of 154 (3.9%) of genes in pham
- Manual Annotations of this start: 5 of 145
- Called 83.3% of time when present
- Phage (with cluster) where this start called: Eviarto_65 (CZ1), Eyre_52 (singleton), Neobush_63 (CZ1), Nymphadora_65 (CZ1), TimTam_65 (CZ1),

Start 45:

- Found in 6 of 154 (3.9%) of genes in pham
- Manual Annotations of this start: 1 of 145
- Called 16.7% of time when present
- Phage (with cluster) where this start called: BatStarr_64 (CZ1),

Start 47:

- Found in 147 of 154 (95.5%) of genes in pham
- Manual Annotations of this start: 137 of 145
- Called 99.3% of time when present
- Phage (with cluster) where this start called: Agueybana_66 (CZ1), AlumE_64 (CZ1), Angelique_58 (CY1), Antonio_62 (CZ1), Apricot_78 (DN3), Arri_10 (DC1), Asapag_79 (DN1), Attis_58 (CZ2), BENtherdunthat_83 (DN1), Bakery_10 (DC1), Barb_9 (DC1),

BaxterFox_64 (CZ3), BeeGee_68 (CY5), Bialota_60 (CZ1), Birdsong_78 (DN), Bjaness7_57 (CZ2), Bosnia_62 (CZ1), BotCity_85 (DN), BoyNamedSue_64 (CZ1), Bradissa_58 (CY1), BritBrat_77 (CY2), Budski_86 (DN), Cashline_61 (CY6), CheeseTouch_87 (DN1), CherryCola_10 (DC1), ClamChowder_9 (DC1), Clap_60 (CZ2), CoveyB_9 (DC1), Crater_79 (DN3), Cynthia_60 (CZ2), Danyall_9 (DC1), Denise_60 (CZ5), DonkeyMan_52 (DY), DumpsterDude_60 (DW), EMSquaredA_62 (CY1), Ebert_64 (CZ2), Ecliptus_85 (DN), EdnaMode_56 (CZ2), Egi03_9 (DC1), EnalisNailo_58 (CY1), Eudoria_62 (CZ1), Evamon_9 (DC1), Faith5x5_58 (CZ6), Fireball_9 (DC1), Floral_63 (CY1), Frickyeah_86 (DN1), FroggyToad_58 (CZ2), Fugax_9 (DC1), GemG_60 (CZ2), Getalong_84 (DN1), Gezellig_9 (DC1), Gizermo_60 (CZ2), Haley23_60 (CZ2), Halo3_10 (DC1), Heinz_51 (DY), Herod_65 (CZ1), Hibiscus_52 (DY), Holliday_83 (DN1), Horus_81 (DN1), Hugley_63 (CZ1), JCole_56 (CZ2), Jablanski_66 (CY3), Jalleen_62 (CZ2), Jambalaya_9 (DC1), Jojo24_51 (DY), Kamaru_75 (DN1), Kenna_78 (DN1), KimmyK_9 (DC1), Kita_63 (CZ1), Kuwabara_81 (DN4), Lamberg_56 (CZ2), Leroy_80 (DN1), Lilas_60 (CY1), LitninMcQueen_83 (DN1), LonelyBoi_61 (CY7), LordFarquaad_60 (CZ2), Lton_58 (CZ), Lucky10_59 (DH), Lutum_84 (DN1), Madavieve_60 (CZ1), Malibo_64 (DW), Malisha_84 (DN), Manasvini_63 (CZ1), Marteena_61 (CY1), Matteo_52 (CZ2), Mocha12_60 (CZ2), Moosehead_63 (CZ6), Morkie_63 (DH), MortyNRick_74 (DN), Mutzi_9 (DC1), Nettuno_56 (CZ2), Nubi_9 (DC1), ODay_88 (DN), Ohgeesy_63 (CZ), OneDirection_56 (CZ6), PantheRoc_67 (CZ3), Pepperoni_57 (CZ), Periwinkle_90 (DN1), Phabuloso_88 (DN1), Phistory_78 (DN1), Phlop_9 (DC1), PhorbesPhlower_61 (DH), Pickett_55 (CZ2), PinkCoffee_9 (DC1), Pollux_65 (CY1), Polly_59 (CZ1), Portcullis_9 (DC1), Posh_65 (CY4), PullumCavea_9 (DC1), Pytheas_66 (CY3), RavenCo17_60 (CZ8), Reyja_54 (DY), RogerDodger_10 (DC1), Sahara_59 (CZ2), Salvador_9 (DC1), Savage_60 (CZ2), Savbucketdawg_9 (DC1), ShawBrad_85 (DN1), Shinji_9 (DC1), Sidious_62 (CZ7), SmokingBunny_9 (DC1), SoilAssassin_58 (CZ2), Spooky_84 (DN2), Sproutie_60 (CZ2), Squiddly_83 (DN2), Suscepit_62 (CZ1), Tarzan_52 (DY), Tayonia_62 (CZ1), ThankyouJordi_64 (CZ1), TillyBobJoe_9 (DC1), Togo_9 (DC1), Trumpet_62 (CZ1), TuertoX_60 (CZ2), Twister6_9 (DC1), Valary_10 (DC1), VanDeWege_10 (DC1), Vasanti_58 (CZ2), WelcomeAyanna_64 (CZ1), Whiteclaw_60 (CZ2), Whitney_79 (DN1), Wizard_9 (DC1), Wrigley_67 (CY4), Yeet412_57 (CZ2), YungMoney_9 (DC1), Zameen_62 (CZ1), Zirinka_59 (CZ1),

Start 48:

- Found in 1 of 154 (0.6%) of genes in pham
- Manual Annotations of this start: 1 of 145
- Called 100.0% of time when present
- Phage (with cluster) where this start called: RiverRaider_78 (DE1),

Summary by clusters:

There are 26 clusters represented in this pham: DN, singleton, DH, CZ2, CZ3, CZ1, CZ6, CZ7, CZ5, CZ8, DY, DW, DN4, DN1, DN3, DN2, CY3, CY2, CY1, CY7, CY6, CY5, CY4, CZ, DC1, DE1,

Info for manual annotations of cluster CY1:

- Start number 43 was manually annotated 1 time for cluster CY1.
- Start number 47 was manually annotated 8 times for cluster CY1.

Info for manual annotations of cluster CY2:

- Start number 47 was manually annotated 1 time for cluster CY2.

Info for manual annotations of cluster CY3:

- Start number 47 was manually annotated 2 times for cluster CY3.

Info for manual annotations of cluster CY4:

- Start number 47 was manually annotated 2 times for cluster CY4.

Info for manual annotations of cluster CY5:

- Start number 47 was manually annotated 1 time for cluster CY5.

Info for manual annotations of cluster CY6:

- Start number 47 was manually annotated 1 time for cluster CY6.

Info for manual annotations of cluster CY7:

- Start number 47 was manually annotated 1 time for cluster CY7.

Info for manual annotations of cluster CZ:

- Start number 47 was manually annotated 2 times for cluster CZ.

Info for manual annotations of cluster CZ1:

- Start number 44 was manually annotated 4 times for cluster CZ1.
- Start number 45 was manually annotated 1 time for cluster CZ1.
- Start number 47 was manually annotated 18 times for cluster CZ1.

Info for manual annotations of cluster CZ2:

- Start number 47 was manually annotated 23 times for cluster CZ2.

Info for manual annotations of cluster CZ3:

- Start number 47 was manually annotated 2 times for cluster CZ3.

Info for manual annotations of cluster CZ5:

- Start number 47 was manually annotated 1 time for cluster CZ5.

Info for manual annotations of cluster CZ6:

- Start number 47 was manually annotated 3 times for cluster CZ6.

Info for manual annotations of cluster CZ7:

- Start number 47 was manually annotated 1 time for cluster CZ7.

Info for manual annotations of cluster CZ8:

- Start number 47 was manually annotated 1 time for cluster CZ8.

Info for manual annotations of cluster DC1:

- Start number 47 was manually annotated 32 times for cluster DC1.

Info for manual annotations of cluster DE1:

- Start number 48 was manually annotated 1 time for cluster DE1.

Info for manual annotations of cluster DH:

- Start number 47 was manually annotated 3 times for cluster DH.

Info for manual annotations of cluster DN:

- Start number 47 was manually annotated 7 times for cluster DN.

Info for manual annotations of cluster DN1:

- Start number 47 was manually annotated 15 times for cluster DN1.

Info for manual annotations of cluster DN2:

- Start number 47 was manually annotated 2 times for cluster DN2.

Info for manual annotations of cluster DN3:

- Start number 47 was manually annotated 2 times for cluster DN3.

Info for manual annotations of cluster DN4:

- Start number 47 was manually annotated 1 time for cluster DN4.

Info for manual annotations of cluster DW:

- Start number 47 was manually annotated 2 times for cluster DW.

Info for manual annotations of cluster DY:

- Start number 47 was manually annotated 6 times for cluster DY.

Gene Information:

Gene: Agueybana_66 Start: 44544, Stop: 44684, Start Num: 47

Candidate Starts for Agueybana_66:

(Start: 47 @44544 has 137 MA's), (61, 44610),

Gene: AlumE_64 Start: 44204, Stop: 44347, Start Num: 47

Candidate Starts for AlumE_64:

(5, 43820), (Start: 47 @44204 has 137 MA's), (61, 44270),

Gene: Angelique_58 Start: 42751, Stop: 42891, Start Num: 47

Candidate Starts for Angelique_58:

(Start: 47 @42751 has 137 MA's), (56, 42793), (60, 42814), (61, 42817),

Gene: Antonio_62 Start: 42026, Stop: 42166, Start Num: 47

Candidate Starts for Antonio_62:

(Start: 47 @42026 has 137 MA's), (56, 42068), (61, 42092),

Gene: Apricot_78 Start: 44909, Stop: 45034, Start Num: 47

Candidate Starts for Apricot_78:

(Start: 47 @44909 has 137 MA's), (57, 44942), (59, 44954), (68, 45011),

Gene: Arri_10 Start: 4536, Stop: 4679, Start Num: 47

Candidate Starts for Arri_10:

(Start: 47 @4536 has 137 MA's), (62, 4608),

Gene: Asapag_79 Start: 45783, Stop: 45908, Start Num: 47

Candidate Starts for Asapag_79:

(Start: 47 @45783 has 137 MA's), (57, 45816),

Gene: Attis_58 Start: 40273, Stop: 40416, Start Num: 47

Candidate Starts for Attis_58:

(Start: 47 @40273 has 137 MA's), (61, 40339),

Gene: BENtherdunthat_83 Start: 46733, Stop: 46858, Start Num: 47
Candidate Starts for BENtherdunthat_83:
(Start: 47 @46733 has 137 MA's), (57, 46766), (59, 46778),

Gene: Bakery_10 Start: 4597, Stop: 4740, Start Num: 47
Candidate Starts for Bakery_10:
(Start: 47 @4597 has 137 MA's), (58, 4651), (62, 4669),

Gene: Barb_9 Start: 4492, Stop: 4635, Start Num: 47
Candidate Starts for Barb_9:
(Start: 47 @4492 has 137 MA's), (58, 4546), (62, 4564),

Gene: BatStarr_64 Start: 44581, Stop: 44727, Start Num: 45
Candidate Starts for BatStarr_64:
(Start: 44 @44578 has 5 MA's), (Start: 45 @44581 has 1 MA's), (49, 44596),

Gene: BaxterFox_64 Start: 44136, Stop: 44279, Start Num: 47
Candidate Starts for BaxterFox_64:
(5, 43752), (Start: 47 @44136 has 137 MA's),

Gene: BeeGee_68 Start: 44042, Stop: 44182, Start Num: 47
Candidate Starts for BeeGee_68:
(Start: 47 @44042 has 137 MA's), (56, 44084), (61, 44108),

Gene: Bialota_60 Start: 42658, Stop: 42798, Start Num: 47
Candidate Starts for Bialota_60:
(Start: 47 @42658 has 137 MA's), (56, 42700), (61, 42724),

Gene: Birdsong_78 Start: 45519, Stop: 45644, Start Num: 47
Candidate Starts for Birdsong_78:
(Start: 47 @45519 has 137 MA's), (57, 45552),

Gene: Bjanes7_57 Start: 38405, Stop: 38545, Start Num: 47
Candidate Starts for Bjanes7_57:
(27, 38321), (Start: 47 @38405 has 137 MA's), (56, 38447), (61, 38471),

Gene: Bosnia_62 Start: 44730, Stop: 44873, Start Num: 47
Candidate Starts for Bosnia_62:
(Start: 47 @44730 has 137 MA's), (61, 44796),

Gene: BotCity_85 Start: 48262, Stop: 48387, Start Num: 47
Candidate Starts for BotCity_85:
(Start: 47 @48262 has 137 MA's), (57, 48295), (59, 48307),

Gene: BoyNamedSue_64 Start: 44204, Stop: 44347, Start Num: 47
Candidate Starts for BoyNamedSue_64:
(5, 43820), (Start: 47 @44204 has 137 MA's), (61, 44270),

Gene: Bradissa_58 Start: 43290, Stop: 43433, Start Num: 47
Candidate Starts for Bradissa_58:
(5, 42906), (Start: 47 @43290 has 137 MA's), (61, 43356),

Gene: BritBrat_77 Start: 48245, Stop: 48370, Start Num: 47
Candidate Starts for BritBrat_77:
(14, 47999), (Start: 47 @48245 has 137 MA's), (61, 48296),

Gene: Budski_86 Start: 47711, Stop: 47848, Start Num: 47
Candidate Starts for Budski_86:
(Start: 47 @47711 has 137 MA's), (57, 47753),

Gene: Cashline_61 Start: 43921, Stop: 44046, Start Num: 47
Candidate Starts for Cashline_61:
(17, 43693), (25, 43810), (Start: 47 @43921 has 137 MA's), (61, 43969),

Gene: CheeseTouch_87 Start: 43339, Stop: 43476, Start Num: 47
Candidate Starts for CheeseTouch_87:
(Start: 47 @43339 has 137 MA's), (57, 43381), (59, 43393), (67, 43447),

Gene: CherryCola_10 Start: 4728, Stop: 4871, Start Num: 47
Candidate Starts for CherryCola_10:
(Start: 47 @4728 has 137 MA's), (62, 4800),

Gene: ClamChowder_9 Start: 4492, Stop: 4635, Start Num: 47
Candidate Starts for ClamChowder_9:
(Start: 47 @4492 has 137 MA's), (58, 4546), (62, 4564),

Gene: Clap_60 Start: 38584, Stop: 38724, Start Num: 47
Candidate Starts for Clap_60:
(27, 38500), (Start: 47 @38584 has 137 MA's), (56, 38626), (61, 38650),

Gene: Confidence_63 Start: 42119, Stop: 42277, Start Num: 43
Candidate Starts for Confidence_63:
(Start: 43 @42119 has 1 MA's), (46, 42125), (Start: 47 @42134 has 137 MA's), (61, 42200),

Gene: CoveyB_9 Start: 4364, Stop: 4507, Start Num: 47
Candidate Starts for CoveyB_9:
(18, 4178), (34, 4304), (Start: 47 @4364 has 137 MA's), (58, 4418), (62, 4436),

Gene: Crater_79 Start: 45646, Stop: 45771, Start Num: 47
Candidate Starts for Crater_79:
(Start: 47 @45646 has 137 MA's), (57, 45679), (59, 45691), (68, 45748),

Gene: Cynthia_60 Start: 38582, Stop: 38722, Start Num: 47
Candidate Starts for Cynthia_60:
(27, 38498), (Start: 47 @38582 has 137 MA's), (56, 38624), (61, 38648),

Gene: Danyall_9 Start: 4364, Stop: 4507, Start Num: 47
Candidate Starts for Danyall_9:
(18, 4178), (34, 4304), (Start: 47 @4364 has 137 MA's), (58, 4418), (62, 4436),

Gene: Denise_60 Start: 37655, Stop: 37786, Start Num: 47
Candidate Starts for Denise_60:
(Start: 47 @37655 has 137 MA's), (50, 37664), (55, 37673), (61, 37703), (64, 37718),

Gene: DonkeyMan_52 Start: 34611, Stop: 34760, Start Num: 47

Candidate Starts for DonkeyMan_52:
(38, 34569), (Start: 47 @34611 has 137 MA's), (61, 34677),

Gene: DumpsterDude_60 Start: 45393, Stop: 45536, Start Num: 47
Candidate Starts for DumpsterDude_60:
(20, 45243), (Start: 47 @45393 has 137 MA's), (61, 45459),

Gene: EMSquaredA_62 Start: 42676, Stop: 42819, Start Num: 47
Candidate Starts for EMSquaredA_62:
(Start: 47 @42676 has 137 MA's), (61, 42742),

Gene: Ebert_64 Start: 39016, Stop: 39156, Start Num: 47
Candidate Starts for Ebert_64:
(27, 38932), (Start: 47 @39016 has 137 MA's), (56, 39058), (61, 39082),

Gene: Ecliptus_85 Start: 48615, Stop: 48740, Start Num: 47
Candidate Starts for Ecliptus_85:
(Start: 47 @48615 has 137 MA's), (57, 48648), (59, 48660), (68, 48717),

Gene: EdnaMode_56 Start: 37847, Stop: 37987, Start Num: 47
Candidate Starts for EdnaMode_56:
(Start: 47 @37847 has 137 MA's), (56, 37889), (61, 37913),

Gene: Egi03_9 Start: 4263, Stop: 4406, Start Num: 47
Candidate Starts for Egi03_9:
(34, 4203), (Start: 47 @4263 has 137 MA's), (58, 4317), (62, 4335),

Gene: EnalisNailo_58 Start: 42500, Stop: 42625, Start Num: 47
Candidate Starts for EnalisNailo_58:
(Start: 47 @42500 has 137 MA's), (61, 42548),

Gene: Eudoria_62 Start: 42026, Stop: 42166, Start Num: 47
Candidate Starts for Eudoria_62:
(Start: 47 @42026 has 137 MA's), (56, 42068), (61, 42092),

Gene: Evamon_9 Start: 4345, Stop: 4488, Start Num: 47
Candidate Starts for Evamon_9:
(18, 4159), (34, 4285), (Start: 47 @4345 has 137 MA's), (58, 4399), (62, 4417),

Gene: Eviarto_65 Start: 44553, Stop: 44702, Start Num: 44
Candidate Starts for Eviarto_65:
(Start: 44 @44553 has 5 MA's), (Start: 45 @44556 has 1 MA's), (49, 44571),

Gene: Eyre_52 Start: 35630, Stop: 35779, Start Num: 44
Candidate Starts for Eyre_52:
(26, 35549), (Start: 44 @35630 has 5 MA's), (Start: 45 @35633 has 1 MA's), (49, 35648), (61, 35708),

Gene: Faith5x5_58 Start: 36024, Stop: 36149, Start Num: 47
Candidate Starts for Faith5x5_58:
(40, 35991), (Start: 47 @36024 has 137 MA's), (61, 36072), (63, 36081), (66, 36093),

Gene: Fireball_9 Start: 4263, Stop: 4406, Start Num: 47
Candidate Starts for Fireball_9:

(34, 4203), (Start: 47 @4263 has 137 MA's), (58, 4317), (62, 4335), (63, 4338),

Gene: Floral_63 Start: 44561, Stop: 44704, Start Num: 47

Candidate Starts for Floral_63:

(Start: 47 @44561 has 137 MA's), (61, 44627),

Gene: Frickyeah_86 Start: 47022, Stop: 47147, Start Num: 47

Candidate Starts for Frickyeah_86:

(Start: 47 @47022 has 137 MA's), (57, 47055), (59, 47067),

Gene: FroggyToad_58 Start: 38804, Stop: 38947, Start Num: 47

Candidate Starts for FroggyToad_58:

(Start: 47 @38804 has 137 MA's), (61, 38870),

Gene: Fugax_9 Start: 4492, Stop: 4635, Start Num: 47

Candidate Starts for Fugax_9:

(Start: 47 @4492 has 137 MA's), (58, 4546), (62, 4564),

Gene: GemG_60 Start: 38588, Stop: 38728, Start Num: 47

Candidate Starts for GemG_60:

(27, 38504), (Start: 47 @38588 has 137 MA's), (56, 38630), (61, 38654),

Gene: Getalong_84 Start: 48039, Stop: 48173, Start Num: 47

Candidate Starts for Getalong_84:

(Start: 47 @48039 has 137 MA's), (57, 48081), (65, 48117), (68, 48150), (69, 48165),

Gene: Gezellig_9 Start: 4263, Stop: 4406, Start Num: 47

Candidate Starts for Gezellig_9:

(34, 4203), (Start: 47 @4263 has 137 MA's), (58, 4317), (62, 4335), (63, 4338),

Gene: Gizermo_60 Start: 38584, Stop: 38724, Start Num: 47

Candidate Starts for Gizermo_60:

(27, 38500), (Start: 47 @38584 has 137 MA's), (56, 38626), (61, 38650),

Gene: Haley23_60 Start: 38584, Stop: 38724, Start Num: 47

Candidate Starts for Haley23_60:

(27, 38500), (Start: 47 @38584 has 137 MA's), (56, 38626), (61, 38650),

Gene: Halo3_10 Start: 4803, Stop: 4946, Start Num: 47

Candidate Starts for Halo3_10:

(Start: 47 @4803 has 137 MA's), (58, 4857), (62, 4875),

Gene: Heinz_51 Start: 33427, Stop: 33582, Start Num: 47

Candidate Starts for Heinz_51:

(Start: 47 @33427 has 137 MA's), (61, 33493),

Gene: Herod_65 Start: 45084, Stop: 45227, Start Num: 47

Candidate Starts for Herod_65:

(Start: 47 @45084 has 137 MA's), (61, 45150),

Gene: Hibiscus_52 Start: 33376, Stop: 33531, Start Num: 47

Candidate Starts for Hibiscus_52:

(Start: 47 @33376 has 137 MA's), (61, 33442),

Gene: Holliday_83 Start: 49327, Stop: 49452, Start Num: 47
Candidate Starts for Holliday_83:
(Start: 47 @49327 has 137 MA's), (57, 49360), (59, 49372),

Gene: Horus_81 Start: 47713, Stop: 47838, Start Num: 47
Candidate Starts for Horus_81:
(Start: 47 @47713 has 137 MA's), (57, 47746), (59, 47758), (68, 47815),

Gene: Hugley_63 Start: 45064, Stop: 45207, Start Num: 47
Candidate Starts for Hugley_63:
(Start: 47 @45064 has 137 MA's), (61, 45130),

Gene: JCole_56 Start: 36913, Stop: 37053, Start Num: 47
Candidate Starts for JCole_56:
(Start: 47 @36913 has 137 MA's), (56, 36955), (61, 36979),

Gene: Jablanski_66 Start: 46418, Stop: 46561, Start Num: 47
Candidate Starts for Jablanski_66:
(16, 46181), (23, 46274), (24, 46292), (29, 46346), (36, 46364), (Start: 47 @46418 has 137 MA's), (61, 46484),

Gene: Jalleen_62 Start: 38902, Stop: 39045, Start Num: 47
Candidate Starts for Jalleen_62:
(Start: 47 @38902 has 137 MA's), (61, 38968),

Gene: Jambalaya_9 Start: 4175, Stop: 4318, Start Num: 47
Candidate Starts for Jambalaya_9:
(18, 3989), (34, 4115), (Start: 47 @4175 has 137 MA's), (58, 4229), (62, 4247),

Gene: Jojo24_51 Start: 33913, Stop: 34062, Start Num: 47
Candidate Starts for Jojo24_51:
(36, 33874), (37, 33877), (41, 33886), (Start: 47 @33913 has 137 MA's), (61, 33979),

Gene: Kamaru_75 Start: 44811, Stop: 44936, Start Num: 47
Candidate Starts for Kamaru_75:
(Start: 47 @44811 has 137 MA's), (57, 44844), (59, 44856), (65, 44880),

Gene: Kenna_78 Start: 46006, Stop: 46131, Start Num: 47
Candidate Starts for Kenna_78:
(Start: 47 @46006 has 137 MA's), (57, 46039), (59, 46051),

Gene: KimmyK_9 Start: 4492, Stop: 4635, Start Num: 47
Candidate Starts for KimmyK_9:
(Start: 47 @4492 has 137 MA's), (58, 4546), (62, 4564),

Gene: Kita_63 Start: 42035, Stop: 42175, Start Num: 47
Candidate Starts for Kita_63:
(Start: 47 @42035 has 137 MA's), (56, 42077), (61, 42101),

Gene: Kuwabara_81 Start: 48077, Stop: 48205, Start Num: 47
Candidate Starts for Kuwabara_81:
(Start: 47 @48077 has 137 MA's), (61, 48128),

Gene: Lamberg_56 Start: 37093, Stop: 37233, Start Num: 47
Candidate Starts for Lamberg_56:
(27, 37009), (Start: 47 @37093 has 137 MA's), (56, 37135), (61, 37159),

Gene: Leroy_80 Start: 45908, Stop: 46033, Start Num: 47
Candidate Starts for Leroy_80:
(Start: 47 @45908 has 137 MA's), (57, 45941), (59, 45953), (68, 46010),

Gene: Lilas_60 Start: 44253, Stop: 44378, Start Num: 47
Candidate Starts for Lilas_60:
(Start: 47 @44253 has 137 MA's), (61, 44301),

Gene: LitninMcQueen_83 Start: 46751, Stop: 46876, Start Num: 47
Candidate Starts for LitninMcQueen_83:
(Start: 47 @46751 has 137 MA's), (57, 46784), (59, 46796), (68, 46853),

Gene: LonelyBoi_61 Start: 45136, Stop: 45279, Start Num: 47
Candidate Starts for LonelyBoi_61:
(28, 45061), (42, 45115), (Start: 47 @45136 has 137 MA's), (56, 45178), (61, 45202),

Gene: LordFarquaad_60 Start: 40254, Stop: 40397, Start Num: 47
Candidate Starts for LordFarquaad_60:
(Start: 47 @40254 has 137 MA's), (61, 40320),

Gene: Lton_58 Start: 34944, Stop: 35081, Start Num: 47
Candidate Starts for Lton_58:
(Start: 47 @34944 has 137 MA's), (57, 34977), (59, 34989), (61, 34995), (67, 35043),

Gene: Lucky10_59 Start: 37676, Stop: 37801, Start Num: 47
Candidate Starts for Lucky10_59:
(Start: 47 @37676 has 137 MA's), (57, 37709), (59, 37718),

Gene: Lutum_84 Start: 47168, Stop: 47293, Start Num: 47
Candidate Starts for Lutum_84:
(Start: 47 @47168 has 137 MA's), (57, 47201), (59, 47213),

Gene: Madavieve_60 Start: 43329, Stop: 43472, Start Num: 47
Candidate Starts for Madavieve_60:
(Start: 47 @43329 has 137 MA's), (61, 43395),

Gene: Malibo_64 Start: 42931, Stop: 43074, Start Num: 47
Candidate Starts for Malibo_64:
(Start: 47 @42931 has 137 MA's),

Gene: Malisha_84 Start: 50153, Stop: 50281, Start Num: 47
Candidate Starts for Malisha_84:
(Start: 47 @50153 has 137 MA's), (61, 50204),

Gene: Manasvini_63 Start: 42050, Stop: 42190, Start Num: 47
Candidate Starts for Manasvini_63:
(Start: 47 @42050 has 137 MA's), (56, 42092), (61, 42116),

Gene: Marteena_61 Start: 42676, Stop: 42819, Start Num: 47

Candidate Starts for Marteena_61:

(Start: 47 @42676 has 137 MA's), (61, 42742),

Gene: Matteo_52 Start: 35712, Stop: 35855, Start Num: 47

Candidate Starts for Matteo_52:

(8, 35382), (11, 35421), (13, 35460), (15, 35484), (35, 35664), (Start: 47 @35712 has 137 MA's), (61, 35778),

Gene: Mocha12_60 Start: 38584, Stop: 38724, Start Num: 47

Candidate Starts for Mocha12_60:

(27, 38500), (Start: 47 @38584 has 137 MA's), (56, 38626), (61, 38650),

Gene: Moosehead_63 Start: 36248, Stop: 36376, Start Num: 47

Candidate Starts for Moosehead_63:

(Start: 47 @36248 has 137 MA's),

Gene: Morkie_63 Start: 37576, Stop: 37701, Start Num: 47

Candidate Starts for Morkie_63:

(1, 37003), (2, 37006), (3, 37108), (4, 37117), (6, 37210), (12, 37285), (19, 37399), (30, 37507), (31, 37510), (33, 37513), (39, 37531), (Start: 47 @37576 has 137 MA's),

Gene: MortyNRick_74 Start: 45894, Stop: 46013, Start Num: 47

Candidate Starts for MortyNRick_74:

(29, 45822), (Start: 47 @45894 has 137 MA's), (50, 45903), (55, 45912), (61, 45942), (70, 46005),

Gene: Mutzi_9 Start: 4364, Stop: 4507, Start Num: 47

Candidate Starts for Mutzi_9:

(18, 4178), (34, 4304), (Start: 47 @4364 has 137 MA's), (58, 4418), (62, 4436),

Gene: Neobush_63 Start: 42127, Stop: 42276, Start Num: 44

Candidate Starts for Neobush_63:

(Start: 44 @42127 has 5 MA's), (Start: 45 @42130 has 1 MA's), (49, 42145),

Gene: Nettuno_56 Start: 37093, Stop: 37233, Start Num: 47

Candidate Starts for Nettuno_56:

(27, 37009), (Start: 47 @37093 has 137 MA's), (56, 37135), (61, 37159),

Gene: Nubi_9 Start: 4364, Stop: 4507, Start Num: 47

Candidate Starts for Nubi_9:

(18, 4178), (34, 4304), (Start: 47 @4364 has 137 MA's), (58, 4418), (62, 4436),

Gene: Nymphadora_65 Start: 44577, Stop: 44726, Start Num: 44

Candidate Starts for Nymphadora_65:

(Start: 44 @44577 has 5 MA's), (Start: 45 @44580 has 1 MA's), (49, 44595),

Gene: ODay_88 Start: 49002, Stop: 49139, Start Num: 47

Candidate Starts for ODay_88:

(Start: 47 @49002 has 137 MA's), (57, 49044), (59, 49056),

Gene: Ohgeesy_63 Start: 43522, Stop: 43665, Start Num: 47

Candidate Starts for Ohgeesy_63:

(30, 43453), (42, 43501), (Start: 47 @43522 has 137 MA's), (56, 43564), (61, 43588),

Gene: OneDirection_56 Start: 34748, Stop: 34876, Start Num: 47
Candidate Starts for OneDirection_56:
(Start: 47 @34748 has 137 MA's), (57, 34781), (65, 34817), (67, 34847),

Gene: PantheRoc_67 Start: 44266, Stop: 44409, Start Num: 47
Candidate Starts for PantheRoc_67:
(Start: 47 @44266 has 137 MA's), (61, 44332),

Gene: Pepperoni_57 Start: 36388, Stop: 36516, Start Num: 47
Candidate Starts for Pepperoni_57:
(Start: 47 @36388 has 137 MA's), (57, 36421), (59, 36433),

Gene: Periwinkle_90 Start: 48715, Stop: 48840, Start Num: 47
Candidate Starts for Periwinkle_90:
(Start: 47 @48715 has 137 MA's), (57, 48748), (59, 48760), (68, 48817),

Gene: Phabuloso_88 Start: 47735, Stop: 47860, Start Num: 47
Candidate Starts for Phabuloso_88:
(Start: 47 @47735 has 137 MA's), (57, 47768),

Gene: Phistory_78 Start: 44811, Stop: 44936, Start Num: 47
Candidate Starts for Phistory_78:
(Start: 47 @44811 has 137 MA's), (57, 44844), (59, 44856), (68, 44913),

Gene: Phlop_9 Start: 4263, Stop: 4406, Start Num: 47
Candidate Starts for Phlop_9:
(34, 4203), (Start: 47 @4263 has 137 MA's), (58, 4317), (62, 4335), (63, 4338),

Gene: PhorbesPhlower_61 Start: 36673, Stop: 36810, Start Num: 47
Candidate Starts for PhorbesPhlower_61:
(10, 36355), (Start: 47 @36673 has 137 MA's), (65, 36751),

Gene: Pickett_55 Start: 36323, Stop: 36463, Start Num: 47
Candidate Starts for Pickett_55:
(Start: 47 @36323 has 137 MA's), (56, 36365), (61, 36389),

Gene: PinkCoffee_9 Start: 4501, Stop: 4644, Start Num: 47
Candidate Starts for PinkCoffee_9:
(Start: 47 @4501 has 137 MA's), (58, 4555), (62, 4573),

Gene: Pollux_65 Start: 44561, Stop: 44704, Start Num: 47
Candidate Starts for Pollux_65:
(Start: 47 @44561 has 137 MA's), (61, 44627),

Gene: Polly_59 Start: 41469, Stop: 41609, Start Num: 47
Candidate Starts for Polly_59:
(Start: 47 @41469 has 137 MA's), (56, 41511), (61, 41535),

Gene: Portcullis_9 Start: 4423, Stop: 4566, Start Num: 47
Candidate Starts for Portcullis_9:
(18, 4237), (34, 4363), (Start: 47 @4423 has 137 MA's), (58, 4477), (62, 4495),

Gene: Posh_65 Start: 45063, Stop: 45206, Start Num: 47
Candidate Starts for Posh_65:
(42, 45042), (Start: 47 @45063 has 137 MA's), (56, 45105), (61, 45129),

Gene: PullumCavea_9 Start: 4263, Stop: 4406, Start Num: 47
Candidate Starts for PullumCavea_9:
(34, 4203), (Start: 47 @4263 has 137 MA's), (58, 4317), (62, 4335), (63, 4338),

Gene: Pytheas_66 Start: 46417, Stop: 46560, Start Num: 47
Candidate Starts for Pytheas_66:
(16, 46180), (23, 46273), (24, 46291), (29, 46345), (36, 46363), (Start: 47 @46417 has 137 MA's), (61, 46483),

Gene: RavenCo17_60 Start: 42838, Stop: 42981, Start Num: 47
Candidate Starts for RavenCo17_60:
(Start: 47 @42838 has 137 MA's), (61, 42904),

Gene: Reyja_54 Start: 35199, Stop: 35348, Start Num: 47
Candidate Starts for Reyja_54:
(36, 35160), (37, 35163), (41, 35172), (Start: 47 @35199 has 137 MA's), (52, 35217), (61, 35265),

Gene: RiverRaider_78 Start: 53776, Stop: 53904, Start Num: 48
Candidate Starts for RiverRaider_78:
(Start: 48 @53776 has 1 MA's), (53, 53803), (63, 53839), (65, 53848),

Gene: RogerDodger_10 Start: 4728, Stop: 4871, Start Num: 47
Candidate Starts for RogerDodger_10:
(22, 4587), (Start: 47 @4728 has 137 MA's), (58, 4782), (62, 4800),

Gene: Sahara_59 Start: 38331, Stop: 38471, Start Num: 47
Candidate Starts for Sahara_59:
(27, 38247), (Start: 47 @38331 has 137 MA's), (56, 38373), (61, 38397),

Gene: Salvador_9 Start: 4343, Stop: 4486, Start Num: 47
Candidate Starts for Salvador_9:
(18, 4157), (34, 4283), (Start: 47 @4343 has 137 MA's), (58, 4397), (62, 4415),

Gene: Savage_60 Start: 38584, Stop: 38724, Start Num: 47
Candidate Starts for Savage_60:
(27, 38500), (Start: 47 @38584 has 137 MA's), (56, 38626), (61, 38650),

Gene: Savbucketdawg_9 Start: 4175, Stop: 4318, Start Num: 47
Candidate Starts for Savbucketdawg_9:
(18, 3989), (34, 4115), (Start: 47 @4175 has 137 MA's), (58, 4229), (62, 4247),

Gene: ShawBrad_85 Start: 45964, Stop: 46089, Start Num: 47
Candidate Starts for ShawBrad_85:
(Start: 47 @45964 has 137 MA's), (57, 45997), (59, 46009), (68, 46066),

Gene: Shinji_9 Start: 4364, Stop: 4507, Start Num: 47
Candidate Starts for Shinji_9:
(18, 4178), (34, 4304), (Start: 47 @4364 has 137 MA's), (58, 4418), (62, 4436),

Gene: Sidious_62 Start: 43734, Stop: 43877, Start Num: 47
Candidate Starts for Sidious_62:
(21, 43593), (Start: 47 @43734 has 137 MA's), (61, 43800),

Gene: SmokingBunny_9 Start: 4343, Stop: 4486, Start Num: 47
Candidate Starts for SmokingBunny_9:
(18, 4157), (34, 4283), (Start: 47 @4343 has 137 MA's), (58, 4397), (62, 4415),

Gene: SoilAssassin_58 Start: 40272, Stop: 40415, Start Num: 47
Candidate Starts for SoilAssassin_58:
(Start: 47 @40272 has 137 MA's), (61, 40338),

Gene: Spooky_84 Start: 47413, Stop: 47538, Start Num: 47
Candidate Starts for Spooky_84:
(Start: 47 @47413 has 137 MA's), (61, 47461),

Gene: Sproutie_60 Start: 38584, Stop: 38724, Start Num: 47
Candidate Starts for Sproutie_60:
(27, 38500), (Start: 47 @38584 has 137 MA's), (56, 38626), (61, 38650),

Gene: Squiddly_83 Start: 49948, Stop: 50076, Start Num: 47
Candidate Starts for Squiddly_83:
(Start: 47 @49948 has 137 MA's), (61, 49999),

Gene: Suscepit_62 Start: 42027, Stop: 42167, Start Num: 47
Candidate Starts for Suscepit_62:
(Start: 47 @42027 has 137 MA's), (56, 42069), (61, 42093),

Gene: Tarzan_52 Start: 33866, Stop: 34015, Start Num: 47
Candidate Starts for Tarzan_52:
(38, 33824), (Start: 47 @33866 has 137 MA's), (61, 33932),

Gene: Tayonia_62 Start: 42026, Stop: 42166, Start Num: 47
Candidate Starts for Tayonia_62:
(Start: 47 @42026 has 137 MA's), (56, 42068), (61, 42092),

Gene: ThankyouJordi_64 Start: 45185, Stop: 45328, Start Num: 47
Candidate Starts for ThankyouJordi_64:
(7, 44843), (9, 44861), (32, 45131), (Start: 47 @45185 has 137 MA's), (61, 45251),

Gene: TillyBobJoe_9 Start: 4178, Stop: 4321, Start Num: 47
Candidate Starts for TillyBobJoe_9:
(18, 3992), (34, 4118), (Start: 47 @4178 has 137 MA's), (58, 4232), (62, 4250),

Gene: TimTam_65 Start: 44577, Stop: 44726, Start Num: 44
Candidate Starts for TimTam_65:
(Start: 44 @44577 has 5 MA's), (Start: 45 @44580 has 1 MA's), (49, 44595),

Gene: Togo_9 Start: 4343, Stop: 4486, Start Num: 47
Candidate Starts for Togo_9:
(18, 4157), (34, 4283), (Start: 47 @4343 has 137 MA's), (58, 4397), (62, 4415),

Gene: Trumpet_62 Start: 42027, Stop: 42167, Start Num: 47

Candidate Starts for Trumpet_62:

(Start: 47 @42027 has 137 MA's), (56, 42069), (61, 42093),

Gene: TuertoX_60 Start: 38584, Stop: 38724, Start Num: 47

Candidate Starts for TuertoX_60:

(27, 38500), (Start: 47 @38584 has 137 MA's), (56, 38626), (61, 38650),

Gene: Twister6_9 Start: 4275, Stop: 4418, Start Num: 47

Candidate Starts for Twister6_9:

(18, 4089), (34, 4215), (Start: 47 @4275 has 137 MA's), (58, 4329), (62, 4347),

Gene: Valary_10 Start: 4728, Stop: 4871, Start Num: 47

Candidate Starts for Valary_10:

(Start: 47 @4728 has 137 MA's), (62, 4800),

Gene: VanDeWege_10 Start: 4656, Stop: 4799, Start Num: 47

Candidate Starts for VanDeWege_10:

(Start: 47 @4656 has 137 MA's), (58, 4710),

Gene: Vasanti_58 Start: 38563, Stop: 38706, Start Num: 47

Candidate Starts for Vasanti_58:

(32, 38509), (Start: 47 @38563 has 137 MA's), (54, 38596), (61, 38629),

Gene: WelcomeAyanna_64 Start: 45332, Stop: 45475, Start Num: 47

Candidate Starts for WelcomeAyanna_64:

(7, 44990), (9, 45008), (32, 45278), (Start: 47 @45332 has 137 MA's), (61, 45398),

Gene: Whiteclaw_60 Start: 38584, Stop: 38724, Start Num: 47

Candidate Starts for Whiteclaw_60:

(27, 38500), (Start: 47 @38584 has 137 MA's), (56, 38626), (61, 38650),

Gene: Whitney_79 Start: 47360, Stop: 47494, Start Num: 47

Candidate Starts for Whitney_79:

(Start: 47 @47360 has 137 MA's), (57, 47402), (65, 47438), (68, 47471), (69, 47486),

Gene: Wizard_9 Start: 4263, Stop: 4406, Start Num: 47

Candidate Starts for Wizard_9:

(34, 4203), (Start: 47 @4263 has 137 MA's), (58, 4317), (62, 4335), (63, 4338),

Gene: Wrigley_67 Start: 44646, Stop: 44789, Start Num: 47

Candidate Starts for Wrigley_67:

(42, 44625), (Start: 47 @44646 has 137 MA's), (56, 44688), (61, 44712),

Gene: Yeet412_57 Start: 39130, Stop: 39270, Start Num: 47

Candidate Starts for Yeet412_57:

(Start: 47 @39130 has 137 MA's), (56, 39172), (61, 39196),

Gene: YungMoney_9 Start: 5428, Stop: 5571, Start Num: 47

Candidate Starts for YungMoney_9:

(34, 5368), (Start: 47 @5428 has 137 MA's), (51, 5443), (58, 5482), (62, 5500), (63, 5503),

Gene: Zameen_62 Start: 42026, Stop: 42166, Start Num: 47

Candidate Starts for Zameen_62:

(Start: 47 @42026 has 137 MA's), (56, 42068), (61, 42092),

Gene: Zirinka_59 Start: 42646, Stop: 42786, Start Num: 47

Candidate Starts for Zirinka_59:

(Start: 47 @42646 has 137 MA's), (56, 42688), (61, 42712),