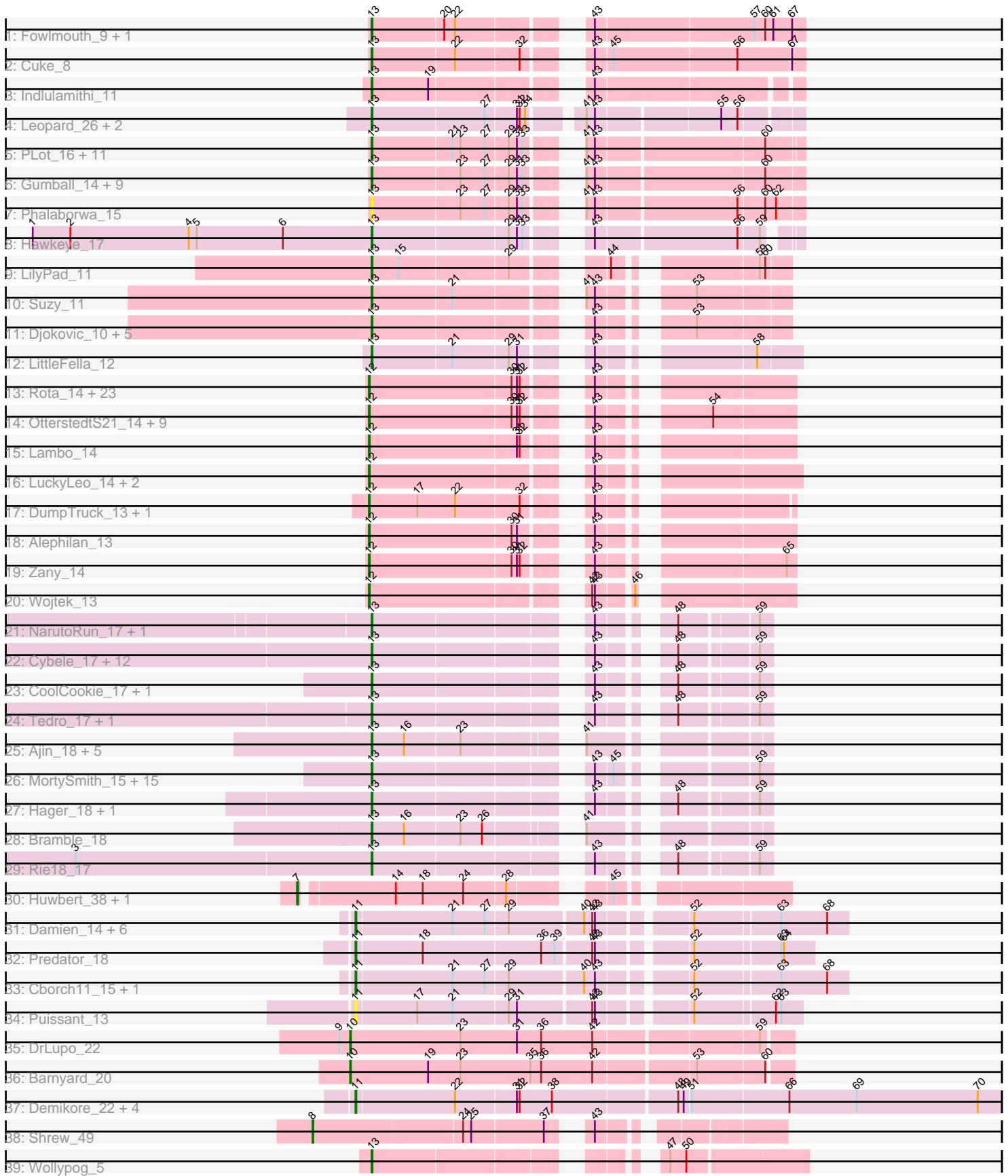


Pham 294494



Note: Tracks are now grouped by subcluster and scaled. Switching in subcluster is indicated by changes in track color. Track scale is now set by default to display the region 30 bp upstream of start 1 to 30 bp downstream of the last possible start. If this default region is judged to be packed too tightly with annotated starts, the track will be further scaled to only show that region of the ORF with annotated starts. This action will be indicated by adding "Zoomed" to the title. For starts, yellow indicates the location of called starts comprised solely of Glimmer/GeneMark auto-annotations, green indicates the location of called starts with at least 1 manual gene annotation.

Pham 294494 Report

This analysis was run 04/18/26 on database version 643.

Pham number 294494 has 150 members, 15 are drafts.

Phages represented in each track:

- Track 1 : Fowlmouth_9, MrMiyagi_9
- Track 2 : Cuke_8
- Track 3 : Indlulamithi_11
- Track 4 : Leopard_26, Onyinye_27, Aikoy_26
- Track 5 : PLOT_16, Giuseppe_15, WaldoWhy_16, Helpful_16, Delton_15, Thoth_15, Chill_16, Visconti_15, SuperheroCarly_15, Penelope2018_15, Troll4_15, Mopey_15
- Track 6 : Gumball_14, KandZ_15, SirHarley_14, Nova_15, BigMama_13, Prager_15, Erk16_15, Adjutor_16, PBI1_16, Butterscotch_15
- Track 7 : Phalaborwa_15
- Track 8 : Hawkeye_17
- Track 9 : LilyPad_11
- Track 10 : Suzy_11
- Track 11 : Djokovic_10, Terapin_10, BiteSize_10, Madi_10, Sienna_10, Beyoncage_10
- Track 12 : LittleFella_12
- Track 13 : Rota_14, RazorC_13, Ranch_14, Charminar_13, Alyssamiracle_13, Stormer_13, Sampudon_15, Genamy16_13, Patos_15, DaviePasture_14, Rumi_13, Gretellyn_14, Riduram_13, Avian_13, Sadboi_14, Jalebi_15, Astralis_13, NovaSharks_13, Yikes_15, Jamemuya19_13, NorManre_15, Erutan_14, Rukungu_15, Mima20_14
- Track 14 : OtterstedtS21_14, Fulcrum_15, Lila22_15, BirthdayBoy_15, ParvusTarda_14, DoobyDoo_13, Gibbin_15, MoiGyank_16, LavAbarElk_13, GOATification_15
- Track 15 : Lambo_14
- Track 16 : LuckyLeo_14, Apeppi_13, Tillicus_15
- Track 17 : DumpTruck_13, Xenia2_14
- Track 18 : Alephilan_13
- Track 19 : Zany_14
- Track 20 : Wojtek_13
- Track 21 : NarutoRun_17, Anakin_17
- Track 22 : Cybele_17, Kate_17, Krampus_17, OhDear_17, OverHedge_17, Rachella_17, PhunaPhoke_17, Artiphact_17, Gilda_17, Pharpay_17, Karate_16, Neptune_17, AnnaSerena_17
- Track 23 : CoolCookie_17, FountainFog_16
- Track 24 : Tedro_17, Haunter_17
- Track 25 : Ajin_18, TinyMiny_18, RikSengupta_18, Kors_18, Sparcetus_18, LordBart_18

- Track 26 : MortySmith_15, Chivey_16, Dauntless_16, Erudite_16, FreddieHg_16, Annapurna_16, DannyDe_16, Snakehole_18, Aesir_16, SilentWarrior_16, JDawG_16, Crestdrop_16, JingleBells_16, Tongui_16, Hiddenleaf_16, Poultruss_16
- Track 27 : Hager_18, Potty_17
- Track 28 : Bramble_18
- Track 29 : Rie18_17
- Track 30 : Huwbart_38, Triscuit_37
- Track 31 : Damien_14, Phreeze_14, Beckerton_14, BobtimousPrime_13, Thumb_14, Konstantine_19, Oaker_14
- Track 32 : Predator_18
- Track 33 : Cborch11_15, Megatron06_16
- Track 34 : Puissant_13
- Track 35 : DrLupo_22
- Track 36 : Barnyard_20
- Track 37 : Demikore_22, Labelle_21, SuperSonics_21, Madruga_20, Patience_22
- Track 38 : Shrew_49
- Track 39 : Wollypog_5

Summary of Final Annotations (See graph section above for start numbers):

The start number called the most often in the published annotations is 13, it was called in 81 of the 135 non-draft genes in the pham.

Genes that call this "Most Annotated" start:

- Adjutor_16, Aesir_16, Aikoy_26, Ajin_18, Anakin_17, AnnaSerena_17, Annapurna_16, Artiphact_17, Beyonccage_10, BigMama_13, BiteSize_10, Bramble_18, Butterscotch_15, Chill_16, Chivey_16, CoolCookie_17, Crestdrop_16, Cuke_8, Cybele_17, DannyDe_16, Dauntless_16, Delton_15, Djokovic_10, Erk16_15, Erudite_16, FountainFog_16, Fowlmouth_9, FreddieHg_16, Gilda_17, Giuseppe_15, Gumball_14, Hager_18, Haunter_17, Hawkeye_17, Helpful_16, Hiddenleaf_16, Indlulamithi_11, JDawG_16, JingleBells_16, KandZ_15, Karate_16, Kate_17, Kors_18, Krampus_17, Leopard_26, LilyPad_11, LittleFella_12, LordBart_18, Madi_10, Mopey_15, MortySmith_15, MrMiyagi_9, NarutoRun_17, Neptune_17, Nova_15, OhDear_17, Onyinye_27, OverHedge_17, PBI1_16, PLOT_16, Penelope2018_15, Phalaborwa_15, Pharpay_17, PhunaPhoke_17, Potty_17, Poultruss_16, Prager_15, Rachella_17, Rie18_17, RikSengupta_18, Sienna_10, SilentWarrior_16, SirHarley_14, Snakehole_18, Sparcetus_18, SuperheroCarly_15, Suzy_11, Tedro_17, Terapin_10, Thoth_15, TinyMiny_18, Tongui_16, Troll4_15, Visconti_15, WaldoWhy_16, Wollypog_5,

Genes that have the "Most Annotated" start but do not call it:

-

Genes that do not have the "Most Annotated" start:

- Alephlan_13, Alyssamiracle_13, Apeppi_13, Astralis_13, Avian_13, Barnyard_20, Beckerton_14, BirthdayBoy_15, BobtimousPrime_13, Cborch11_15, Charminar_13, Damien_14, DaviePasture_14, Demikore_22, DoobyDoo_13, DrLupo_22, DumpTruck_13, Erutan_14, Fulcrum_15, GOATification_15, Genamy16_13, Gibbin_15, Gretellyn_14, Huwbart_38, Jalebi_15, Jamemuya19_13, Konstantine_19, Labelle_21, Lambo_14, LavAbarElk_13, Lila22_15, LuckyLeo_14, Madruga_20,

Megatron06_16, Mima20_14, MoiGyank_16, NorManre_15, NovaSharks_13, Oaker_14, OtterstedtS21_14, ParvusTarda_14, Patience_22, Patos_15, Phreeze_14, Predator_18, Puissant_13, Ranch_14, RazorC_13, Riduram_13, Rota_14, Rukungu_15, Rumi_13, Sadboi_14, Sampudon_15, Shrew_49, Stormer_13, SuperSonics_21, Thumb_14, Tillicus_15, Triscuit_37, Wojtek_13, Xenia2_14, Yikes_15, Zany_14,

Summary by start number:

Start 7:

- Found in 2 of 150 (1.3%) of genes in pham
- Manual Annotations of this start: 2 of 135
- Called 100.0% of time when present
- Phage (with cluster) where this start called: Huwbert_38 (GG), Triscuit_37 (GG),

Start 8:

- Found in 1 of 150 (0.7%) of genes in pham
- Manual Annotations of this start: 1 of 135
- Called 100.0% of time when present
- Phage (with cluster) where this start called: Shrew_49 (singleton),

Start 10:

- Found in 2 of 150 (1.3%) of genes in pham
- Manual Annotations of this start: 2 of 135
- Called 100.0% of time when present
- Phage (with cluster) where this start called: Barnyard_20 (H2), DrLupo_22 (H2),

Start 11:

- Found in 16 of 150 (10.7%) of genes in pham
- Manual Annotations of this start: 12 of 135
- Called 100.0% of time when present
- Phage (with cluster) where this start called: Beckerton_14 (H1), BobtimousPrime_13 (H1), Cborch11_15 (H1), Damien_14 (H1), Demikore_22 (U), Konstantine_19 (H1), Labelle_21 (U), Madrugua_20 (U), Megatron06_16 (H1), Oaker_14 (H1), Patience_22 (U), Phreeze_14 (H1), Predator_18 (H1), Puissant_13 (H1), SuperSonics_21 (U), Thumb_14 (H1),

Start 12:

- Found in 43 of 150 (28.7%) of genes in pham
- Manual Annotations of this start: 37 of 135
- Called 100.0% of time when present
- Phage (with cluster) where this start called: Alephilan_13 (DV), Alyssamiracle_13 (DV), Apeppi_13 (DV), Astralis_13 (DV), Avian_13 (DV), BirthdayBoy_15 (DV), Charminar_13 (DV), DaviePasture_14 (DV), DoobyDoo_13 (DV), DumpTruck_13 (DV), Erutan_14 (DV), Fulcrum_15 (DV), GOATification_15 (DV), Genamy16_13 (DV), Gibbin_15 (DV), GretelLyn_14 (DV), Jalebi_15 (DV), Jamemuya19_13 (DV), Lambo_14 (DV), LavAbarElk_13 (DV), Lila22_15 (DV), LuckyLeo_14 (DV), Mima20_14 (DV), MoiGyank_16 (DV), NorManre_15 (DV), NovaSharks_13 (DV), OtterstedtS21_14 (DV), ParvusTarda_14 (DV), Patos_15 (DV), Ranch_14 (DV), RazorC_13 (DV), Riduram_13 (DV), Rota_14 (DV), Rukungu_15 (DV), Rumi_13 (DV), Sadboi_14 (DV), Sampudon_15 (DV), Stormer_13 (DV), Tillicus_15 (DV), Wojtek_13 (DV), Xenia2_14 (DV), Yikes_15 (DV), Zany_14 (DV),

Start 13:

- Found in 86 of 150 (57.3%) of genes in pham
- Manual Annotations of this start: 81 of 135
- Called 100.0% of time when present
- Phage (with cluster) where this start called: Adjutor_16 (D1), Aesir_16 (EF), Aikoy_26 (AE), Ajin_18 (EF), Anakin_17 (EF), AnnaSerena_17 (EF), Annapurna_16 (EF), Artiphact_17 (EF), Beyoncage_10 (DG1), BigMama_13 (D1), BiteSize_10 (DG1), Bramble_18 (EF), Butterscotch_15 (D1), Chill_16 (D1), Chivey_16 (EF), CoolCookie_17 (EF), Crestdrop_16 (EF), Cuke_8 (AC), Cybele_17 (EF), DannyDe_16 (EF), Dauntless_16 (EF), Delton_15 (D1), Djokovic_10 (DG1), Erk16_15 (D1), Erudite_16 (EF), FountainFog_16 (EF), Fowlmouth_9 (AC), FreddieHg_16 (EF), Gilda_17 (EF), Giuseppe_15 (D1), Gumball_14 (D1), Hager_18 (EF), Haunter_17 (EF), Hawkeye_17 (D2), Helpful_16 (D1), Hiddenleaf_16 (EF), Indlulamithi_11 (AC), JDawG_16 (EF), JingleBells_16 (EF), KandZ_15 (D1), Karate_16 (EF), Kate_17 (EF), Kors_18 (EF), Krampus_17 (EF), Leopard_26 (AE), LilyPad_11 (DG1), LittleFella_12 (DG2), LordBart_18 (EF), Madi_10 (DG1), Mopey_15 (D1), MortySmith_15 (EF), MrMiyagi_9 (AC), NarutoRun_17 (EF), Neptune_17 (EF), Nova_15 (D1), OhDear_17 (EF), Onyinye_27 (AE), OverHedge_17 (EF), PBI1_16 (D1), PLOt_16 (D1), Penelope2018_15 (D1), Phalaborwa_15 (D1), Pharpay_17 (EF), PhunaPhoke_17 (EF), Potty_17 (EF), Poultruss_16 (EF), Prager_15 (D1), Rachella_17 (EF), Rie18_17 (EF), RikSengupta_18 (EF), Sienna_10 (DG1), SilentWarrior_16 (EF), SirHarley_14 (D1), Snakehole_18 (EF), Sparcetus_18 (EF), SuperheroCarly_15 (D1), Suzy_11 (DG1), Tedro_17 (EF), Terapin_10 (DG1), Thoth_15 (D1), TinyMiny_18 (EF), Tongui_16 (EF), Troll4_15 (D1), Visconti_15 (D1), WaldoWhy_16 (D1), Wollypog_5 (singleton),

Summary by clusters:

There are 13 clusters represented in this pham: DG2, AC, H1, AE, H2, EF, singleton, GG, DG1, U, DV, D2, D1,

Info for manual annotations of cluster AC:

- Start number 13 was manually annotated 4 times for cluster AC.

Info for manual annotations of cluster AE:

- Start number 13 was manually annotated 3 times for cluster AE.

Info for manual annotations of cluster D1:

- Start number 13 was manually annotated 22 times for cluster D1.

Info for manual annotations of cluster D2:

- Start number 13 was manually annotated 1 time for cluster D2.

Info for manual annotations of cluster DG1:

- Start number 13 was manually annotated 8 times for cluster DG1.

Info for manual annotations of cluster DG2:

- Start number 13 was manually annotated 1 time for cluster DG2.

Info for manual annotations of cluster DV:

- Start number 12 was manually annotated 37 times for cluster DV.

Info for manual annotations of cluster EF:

- Start number 13 was manually annotated 41 times for cluster EF.

Info for manual annotations of cluster GG:

- Start number 7 was manually annotated 2 times for cluster GG.

Info for manual annotations of cluster H1:

- Start number 11 was manually annotated 9 times for cluster H1.

Info for manual annotations of cluster H2:

- Start number 10 was manually annotated 2 times for cluster H2.

Info for manual annotations of cluster U:

- Start number 11 was manually annotated 3 times for cluster U.

Gene Information:

Gene: Adjutor_16 Start: 10392, Stop: 10811, Start Num: 13

Candidate Starts for Adjutor_16:

(Start: 13 @10392 has 81 MA's), (23, 10488), (27, 10515), (29, 10539), (31, 10548), (33, 10554), (41, 10587), (43, 10596), (60, 10773),

Gene: Aesir_16 Start: 9070, Stop: 9429, Start Num: 13

Candidate Starts for Aesir_16:

(Start: 13 @9070 has 81 MA's), (43, 9277), (45, 9295), (59, 9415),

Gene: Aikoy_26 Start: 16296, Stop: 16724, Start Num: 13

Candidate Starts for Aikoy_26:

(Start: 13 @16296 has 81 MA's), (27, 16419), (31, 16452), (32, 16455), (34, 16461), (41, 16509), (43, 16518), (55, 16647), (56, 16665),

Gene: Ajin_18 Start: 9126, Stop: 9482, Start Num: 13

Candidate Starts for Ajin_18:

(Start: 13 @9126 has 81 MA's), (16, 9162), (23, 9222), (41, 9321),

Gene: Alephilan_13 Start: 10817, Stop: 11206, Start Num: 12

Candidate Starts for Alephilan_13:

(Start: 12 @10817 has 37 MA's), (30, 10973), (31, 10979), (43, 11027),

Gene: Alyssamiracle_13 Start: 9224, Stop: 9613, Start Num: 12

Candidate Starts for Alyssamiracle_13:

(Start: 12 @9224 has 37 MA's), (30, 9380), (31, 9386), (32, 9389), (43, 9434),

Gene: Anakin_17 Start: 9282, Stop: 9638, Start Num: 13

Candidate Starts for Anakin_17:

(Start: 13 @9282 has 81 MA's), (43, 9489), (48, 9546), (59, 9624),

Gene: AnnaSerena_17 Start: 9288, Stop: 9644, Start Num: 13

Candidate Starts for AnnaSerena_17:

(Start: 13 @9288 has 81 MA's), (43, 9495), (48, 9552), (59, 9630),

Gene: Annapurna_16 Start: 8489, Stop: 8848, Start Num: 13

Candidate Starts for Annapurna_16:
(Start: 13 @8489 has 81 MA's), (43, 8696), (45, 8714), (59, 8834),

Gene: Apeppi_13 Start: 10933, Stop: 11331, Start Num: 12
Candidate Starts for Apeppi_13:
(Start: 12 @10933 has 37 MA's), (43, 11143),

Gene: Artiphact_17 Start: 9280, Stop: 9636, Start Num: 13
Candidate Starts for Artiphact_17:
(Start: 13 @9280 has 81 MA's), (43, 9487), (48, 9544), (59, 9622),

Gene: Astralis_13 Start: 9224, Stop: 9613, Start Num: 12
Candidate Starts for Astralis_13:
(Start: 12 @9224 has 37 MA's), (30, 9380), (31, 9386), (32, 9389), (43, 9434),

Gene: Avian_13 Start: 9224, Stop: 9613, Start Num: 12
Candidate Starts for Avian_13:
(Start: 12 @9224 has 37 MA's), (30, 9380), (31, 9386), (32, 9389), (43, 9434),

Gene: Barnyard_20 Start: 11230, Stop: 11703, Start Num: 10
Candidate Starts for Barnyard_20:
(Start: 10 @11230 has 2 MA's), (19, 11317), (23, 11353), (35, 11431), (36, 11443), (42, 11500), (53, 11605), (60, 11677),

Gene: Beckerton_14 Start: 10316, Stop: 10822, Start Num: 11
Candidate Starts for Beckerton_14:
(Start: 11 @10316 has 12 MA's), (21, 10421), (27, 10457), (29, 10481), (40, 10559), (42, 10568), (43, 10571), (52, 10658), (63, 10748), (68, 10799),

Gene: Beyoncage_10 Start: 6697, Stop: 7074, Start Num: 13
Candidate Starts for Beyoncage_10:
(Start: 13 @6697 has 81 MA's), (43, 6901), (53, 6976),

Gene: BigMama_13 Start: 10465, Stop: 10884, Start Num: 13
Candidate Starts for BigMama_13:
(Start: 13 @10465 has 81 MA's), (23, 10561), (27, 10588), (29, 10612), (31, 10621), (33, 10627), (41, 10660), (43, 10669), (60, 10846),

Gene: BirthdayBoy_15 Start: 11670, Stop: 12059, Start Num: 12
Candidate Starts for BirthdayBoy_15:
(Start: 12 @11670 has 37 MA's), (30, 11826), (31, 11832), (32, 11835), (43, 11880), (54, 11973),

Gene: BiteSize_10 Start: 6697, Stop: 7074, Start Num: 13
Candidate Starts for BiteSize_10:
(Start: 13 @6697 has 81 MA's), (43, 6901), (53, 6976),

Gene: BobtimousPrime_13 Start: 10236, Stop: 10742, Start Num: 11
Candidate Starts for BobtimousPrime_13:
(Start: 11 @10236 has 12 MA's), (21, 10341), (27, 10377), (29, 10401), (40, 10479), (42, 10488), (43, 10491), (52, 10578), (63, 10668), (68, 10719),

Gene: Bramble_18 Start: 9093, Stop: 9449, Start Num: 13
Candidate Starts for Bramble_18:

(Start: 13 @9093 has 81 MA's), (16, 9129), (23, 9189), (26, 9213), (41, 9288),

Gene: Butterscotch_15 Start: 10452, Stop: 10871, Start Num: 13

Candidate Starts for Butterscotch_15:

(Start: 13 @10452 has 81 MA's), (23, 10548), (27, 10575), (29, 10599), (31, 10608), (33, 10614), (41, 10647), (43, 10656), (60, 10833),

Gene: Cborch11_15 Start: 9778, Stop: 10284, Start Num: 11

Candidate Starts for Cborch11_15:

(Start: 11 @9778 has 12 MA's), (21, 9883), (27, 9919), (29, 9943), (40, 10021), (43, 10033), (52, 10120), (63, 10210), (68, 10261),

Gene: Charminar_13 Start: 9224, Stop: 9613, Start Num: 12

Candidate Starts for Charminar_13:

(Start: 12 @9224 has 37 MA's), (30, 9380), (31, 9386), (32, 9389), (43, 9434),

Gene: Chill_16 Start: 10455, Stop: 10874, Start Num: 13

Candidate Starts for Chill_16:

(Start: 13 @10455 has 81 MA's), (21, 10542), (23, 10551), (27, 10578), (29, 10602), (31, 10611), (33, 10617), (41, 10650), (43, 10659), (60, 10836),

Gene: Chivey_16 Start: 8482, Stop: 8841, Start Num: 13

Candidate Starts for Chivey_16:

(Start: 13 @8482 has 81 MA's), (43, 8689), (45, 8707), (59, 8827),

Gene: CoolCookie_17 Start: 9286, Stop: 9642, Start Num: 13

Candidate Starts for CoolCookie_17:

(Start: 13 @9286 has 81 MA's), (43, 9493), (48, 9550), (59, 9628),

Gene: Crestdrop_16 Start: 8356, Stop: 8715, Start Num: 13

Candidate Starts for Crestdrop_16:

(Start: 13 @8356 has 81 MA's), (43, 8563), (45, 8581), (59, 8701),

Gene: Cuke_8 Start: 5912, Stop: 6340, Start Num: 13

Candidate Starts for Cuke_8:

(Start: 13 @5912 has 81 MA's), (22, 6002), (32, 6071), (43, 6116), (45, 6134), (56, 6269), (67, 6326),

Gene: Cybele_17 Start: 9256, Stop: 9612, Start Num: 13

Candidate Starts for Cybele_17:

(Start: 13 @9256 has 81 MA's), (43, 9463), (48, 9520), (59, 9598),

Gene: Damien_14 Start: 9778, Stop: 10284, Start Num: 11

Candidate Starts for Damien_14:

(Start: 11 @9778 has 12 MA's), (21, 9883), (27, 9919), (29, 9943), (40, 10021), (42, 10030), (43, 10033), (52, 10120), (63, 10210), (68, 10261),

Gene: DannyDe_16 Start: 8474, Stop: 8833, Start Num: 13

Candidate Starts for DannyDe_16:

(Start: 13 @8474 has 81 MA's), (43, 8681), (45, 8699), (59, 8819),

Gene: Dauntless_16 Start: 8999, Stop: 9358, Start Num: 13

Candidate Starts for Dauntless_16:

(Start: 13 @8999 has 81 MA's), (43, 9206), (45, 9224), (59, 9344),

Gene: DaviePasture_14 Start: 11427, Stop: 11816, Start Num: 12
Candidate Starts for DaviePasture_14:
(Start: 12 @11427 has 37 MA's), (30, 11583), (31, 11589), (32, 11592), (43, 11637),

Gene: Delton_15 Start: 10461, Stop: 10880, Start Num: 13
Candidate Starts for Delton_15:
(Start: 13 @10461 has 81 MA's), (21, 10548), (23, 10557), (27, 10584), (29, 10608), (31, 10617), (33, 10623), (41, 10656), (43, 10665), (60, 10842),

Gene: Demikore_22 Start: 12751, Stop: 13449, Start Num: 11
Candidate Starts for Demikore_22:
(Start: 11 @12751 has 12 MA's), (22, 12859), (31, 12925), (32, 12928), (38, 12964), (48, 13096), (49, 13102), (51, 13108), (66, 13213), (69, 13288), (70, 13423),

Gene: Djokovic_10 Start: 6697, Stop: 7074, Start Num: 13
Candidate Starts for Djokovic_10:
(Start: 13 @6697 has 81 MA's), (43, 6901), (53, 6976),

Gene: DoobyDoo_13 Start: 10604, Stop: 10993, Start Num: 12
Candidate Starts for DoobyDoo_13:
(Start: 12 @10604 has 37 MA's), (30, 10760), (31, 10766), (32, 10769), (43, 10814), (54, 10907),

Gene: DrLupo_22 Start: 11658, Stop: 12131, Start Num: 10
Candidate Starts for DrLupo_22:
(9, 11646), (Start: 10 @11658 has 2 MA's), (23, 11781), (31, 11844), (36, 11871), (42, 11928), (59, 12099),

Gene: DumpTruck_13 Start: 10861, Stop: 11247, Start Num: 12
Candidate Starts for DumpTruck_13:
(Start: 12 @10861 has 37 MA's), (17, 10915), (22, 10957), (32, 11026), (43, 11071),

Gene: Erk16_15 Start: 10455, Stop: 10874, Start Num: 13
Candidate Starts for Erk16_15:
(Start: 13 @10455 has 81 MA's), (23, 10551), (27, 10578), (29, 10602), (31, 10611), (33, 10617), (41, 10650), (43, 10659), (60, 10836),

Gene: Erudite_16 Start: 8999, Stop: 9358, Start Num: 13
Candidate Starts for Erudite_16:
(Start: 13 @8999 has 81 MA's), (43, 9206), (45, 9224), (59, 9344),

Gene: Erutan_14 Start: 11117, Stop: 11506, Start Num: 12
Candidate Starts for Erutan_14:
(Start: 12 @11117 has 37 MA's), (30, 11273), (31, 11279), (32, 11282), (43, 11327),

Gene: FountainFog_16 Start: 8616, Stop: 8972, Start Num: 13
Candidate Starts for FountainFog_16:
(Start: 13 @8616 has 81 MA's), (43, 8823), (48, 8880), (59, 8958),

Gene: Fowlmouth_9 Start: 6076, Stop: 6507, Start Num: 13
Candidate Starts for Fowlmouth_9:
(Start: 13 @6076 has 81 MA's), (20, 6154), (22, 6166), (43, 6280), (57, 6451), (60, 6463), (61, 6472), (67, 6493),

Gene: FreddieHg_16 Start: 8498, Stop: 8857, Start Num: 13
Candidate Starts for FreddieHg_16:
(Start: 13 @8498 has 81 MA's), (43, 8705), (45, 8723), (59, 8843),

Gene: Fulcrum_15 Start: 11650, Stop: 12039, Start Num: 12
Candidate Starts for Fulcrum_15:
(Start: 12 @11650 has 37 MA's), (30, 11806), (31, 11812), (32, 11815), (43, 11860), (54, 11953),

Gene: GOATification_15 Start: 11650, Stop: 12039, Start Num: 12
Candidate Starts for GOATification_15:
(Start: 12 @11650 has 37 MA's), (30, 11806), (31, 11812), (32, 11815), (43, 11860), (54, 11953),

Gene: Genamy16_13 Start: 9224, Stop: 9613, Start Num: 12
Candidate Starts for Genamy16_13:
(Start: 12 @9224 has 37 MA's), (30, 9380), (31, 9386), (32, 9389), (43, 9434),

Gene: Gibbin_15 Start: 11710, Stop: 12099, Start Num: 12
Candidate Starts for Gibbin_15:
(Start: 12 @11710 has 37 MA's), (30, 11866), (31, 11872), (32, 11875), (43, 11920), (54, 12013),

Gene: Gilda_17 Start: 9280, Stop: 9636, Start Num: 13
Candidate Starts for Gilda_17:
(Start: 13 @9280 has 81 MA's), (43, 9487), (48, 9544), (59, 9622),

Gene: Giuseppe_15 Start: 10444, Stop: 10863, Start Num: 13
Candidate Starts for Giuseppe_15:
(Start: 13 @10444 has 81 MA's), (21, 10531), (23, 10540), (27, 10567), (29, 10591), (31, 10600), (33, 10606), (41, 10639), (43, 10648), (60, 10825),

Gene: Gretellyn_14 Start: 11984, Stop: 12373, Start Num: 12
Candidate Starts for Gretellyn_14:
(Start: 12 @11984 has 37 MA's), (30, 12140), (31, 12146), (32, 12149), (43, 12194),

Gene: Gumball_14 Start: 10399, Stop: 10821, Start Num: 13
Candidate Starts for Gumball_14:
(Start: 13 @10399 has 81 MA's), (23, 10495), (27, 10522), (29, 10546), (31, 10555), (33, 10561), (41, 10594), (43, 10603), (60, 10780),

Gene: Hager_18 Start: 8855, Stop: 9211, Start Num: 13
Candidate Starts for Hager_18:
(Start: 13 @8855 has 81 MA's), (43, 9062), (48, 9119), (59, 9197),

Gene: Haunter_17 Start: 8696, Stop: 9052, Start Num: 13
Candidate Starts for Haunter_17:
(Start: 13 @8696 has 81 MA's), (43, 8903), (48, 8960), (59, 9038),

Gene: Hawkeye_17 Start: 10361, Stop: 10765, Start Num: 13
Candidate Starts for Hawkeye_17:
(1, 9983), (2, 10025), (4, 10157), (5, 10166), (6, 10262), (Start: 13 @10361 has 81 MA's), (29, 10508), (31, 10517), (33, 10523), (43, 10565), (56, 10715), (59, 10736),

Gene: Helpful_16 Start: 10452, Stop: 10871, Start Num: 13

Candidate Starts for Helpful_16:

(Start: 13 @10452 has 81 MA's), (21, 10539), (23, 10548), (27, 10575), (29, 10599), (31, 10608), (33, 10614), (41, 10647), (43, 10656), (60, 10833),

Gene: Hiddenleaf_16 Start: 8482, Stop: 8841, Start Num: 13

Candidate Starts for Hiddenleaf_16:

(Start: 13 @8482 has 81 MA's), (43, 8689), (45, 8707), (59, 8827),

Gene: Huwbert_38 Start: 19477, Stop: 19938, Start Num: 7

Candidate Starts for Huwbert_38:

(Start: 7 @19477 has 2 MA's), (14, 19573), (18, 19603), (24, 19648), (28, 19693), (45, 19774),

Gene: Indlulamithi_11 Start: 7639, Stop: 8055, Start Num: 13

Candidate Starts for Indlulamithi_11:

(Start: 13 @7639 has 81 MA's), (19, 7702), (43, 7843),

Gene: JDawG_16 Start: 9064, Stop: 9423, Start Num: 13

Candidate Starts for JDawG_16:

(Start: 13 @9064 has 81 MA's), (43, 9271), (45, 9289), (59, 9409),

Gene: Jalebi_15 Start: 12160, Stop: 12549, Start Num: 12

Candidate Starts for Jalebi_15:

(Start: 12 @12160 has 37 MA's), (30, 12316), (31, 12322), (32, 12325), (43, 12370),

Gene: Jamemuya19_13 Start: 9224, Stop: 9613, Start Num: 12

Candidate Starts for Jamemuya19_13:

(Start: 12 @9224 has 37 MA's), (30, 9380), (31, 9386), (32, 9389), (43, 9434),

Gene: JingleBells_16 Start: 8559, Stop: 8918, Start Num: 13

Candidate Starts for JingleBells_16:

(Start: 13 @8559 has 81 MA's), (43, 8766), (45, 8784), (59, 8904),

Gene: KandZ_15 Start: 10549, Stop: 10971, Start Num: 13

Candidate Starts for KandZ_15:

(Start: 13 @10549 has 81 MA's), (23, 10645), (27, 10672), (29, 10696), (31, 10705), (33, 10711), (41, 10744), (43, 10753), (60, 10930),

Gene: Karate_16 Start: 8704, Stop: 9060, Start Num: 13

Candidate Starts for Karate_16:

(Start: 13 @8704 has 81 MA's), (43, 8911), (48, 8968), (59, 9046),

Gene: Kate_17 Start: 9288, Stop: 9644, Start Num: 13

Candidate Starts for Kate_17:

(Start: 13 @9288 has 81 MA's), (43, 9495), (48, 9552), (59, 9630),

Gene: Konstantine_19 Start: 10980, Stop: 11486, Start Num: 11

Candidate Starts for Konstantine_19:

(Start: 11 @10980 has 12 MA's), (21, 11085), (27, 11121), (29, 11145), (40, 11223), (42, 11232), (43, 11235), (52, 11322), (63, 11412), (68, 11463),

Gene: Kors_18 Start: 9156, Stop: 9512, Start Num: 13

Candidate Starts for Kors_18:

(Start: 13 @9156 has 81 MA's), (16, 9192), (23, 9252), (41, 9351),

Gene: Krampus_17 Start: 9286, Stop: 9642, Start Num: 13
Candidate Starts for Krampus_17:
(Start: 13 @9286 has 81 MA's), (43, 9493), (48, 9550), (59, 9628),

Gene: Labelle_21 Start: 12753, Stop: 13451, Start Num: 11
Candidate Starts for Labelle_21:
(Start: 11 @12753 has 12 MA's), (22, 12861), (31, 12927), (32, 12930), (38, 12966), (48, 13098), (49, 13104), (51, 13110), (66, 13215), (69, 13290), (70, 13425),

Gene: Lambo_14 Start: 11654, Stop: 12043, Start Num: 12
Candidate Starts for Lambo_14:
(Start: 12 @11654 has 37 MA's), (31, 11816), (32, 11819), (43, 11864),

Gene: LavAbarElk_13 Start: 10087, Stop: 10476, Start Num: 12
Candidate Starts for LavAbarElk_13:
(Start: 12 @10087 has 37 MA's), (30, 10243), (31, 10249), (32, 10252), (43, 10297), (54, 10390),

Gene: Leopard_26 Start: 16581, Stop: 17009, Start Num: 13
Candidate Starts for Leopard_26:
(Start: 13 @16581 has 81 MA's), (27, 16704), (31, 16737), (32, 16740), (34, 16746), (41, 16794), (43, 16803), (55, 16932), (56, 16950),

Gene: Lila22_15 Start: 11608, Stop: 11997, Start Num: 12
Candidate Starts for Lila22_15:
(Start: 12 @11608 has 37 MA's), (30, 11764), (31, 11770), (32, 11773), (43, 11818), (54, 11911),

Gene: LilyPad_11 Start: 7439, Stop: 7816, Start Num: 13
Candidate Starts for LilyPad_11:
(Start: 13 @7439 has 81 MA's), (15, 7469), (29, 7586), (44, 7658), (59, 7784), (60, 7790),

Gene: LittleFella_12 Start: 9274, Stop: 9663, Start Num: 13
Candidate Starts for LittleFella_12:
(Start: 13 @9274 has 81 MA's), (21, 9361), (29, 9421), (31, 9430), (43, 9478), (58, 9616),

Gene: LordBart_18 Start: 9129, Stop: 9485, Start Num: 13
Candidate Starts for LordBart_18:
(Start: 13 @9129 has 81 MA's), (16, 9165), (23, 9225), (41, 9324),

Gene: LuckyLeo_14 Start: 10933, Stop: 11331, Start Num: 12
Candidate Starts for LuckyLeo_14:
(Start: 12 @10933 has 37 MA's), (43, 11143),

Gene: Madi_10 Start: 6697, Stop: 7074, Start Num: 13
Candidate Starts for Madi_10:
(Start: 13 @6697 has 81 MA's), (43, 6901), (53, 6976),

Gene: Madruga_20 Start: 12421, Stop: 13119, Start Num: 11
Candidate Starts for Madruga_20:
(Start: 11 @12421 has 12 MA's), (22, 12529), (31, 12595), (32, 12598), (38, 12634), (48, 12766), (49, 12772), (51, 12778), (66, 12883), (69, 12958), (70, 13093),

Gene: Megatron06_16 Start: 10313, Stop: 10819, Start Num: 11

Candidate Starts for Megatron06_16:

(Start: 11 @10313 has 12 MA's), (21, 10418), (27, 10454), (29, 10478), (40, 10556), (43, 10568), (52, 10655), (63, 10745), (68, 10796),

Gene: Mima20_14 Start: 11337, Stop: 11726, Start Num: 12

Candidate Starts for Mima20_14:

(Start: 12 @11337 has 37 MA's), (30, 11493), (31, 11499), (32, 11502), (43, 11547),

Gene: MoiGyank_16 Start: 12021, Stop: 12410, Start Num: 12

Candidate Starts for MoiGyank_16:

(Start: 12 @12021 has 37 MA's), (30, 12177), (31, 12183), (32, 12186), (43, 12231), (54, 12324),

Gene: Mopey_15 Start: 10452, Stop: 10871, Start Num: 13

Candidate Starts for Mopey_15:

(Start: 13 @10452 has 81 MA's), (21, 10539), (23, 10548), (27, 10575), (29, 10599), (31, 10608), (33, 10614), (41, 10647), (43, 10656), (60, 10833),

Gene: MortySmith_15 Start: 8461, Stop: 8820, Start Num: 13

Candidate Starts for MortySmith_15:

(Start: 13 @8461 has 81 MA's), (43, 8668), (45, 8686), (59, 8806),

Gene: MrMiyagi_9 Start: 6076, Stop: 6507, Start Num: 13

Candidate Starts for MrMiyagi_9:

(Start: 13 @6076 has 81 MA's), (20, 6154), (22, 6166), (43, 6280), (57, 6451), (60, 6463), (61, 6472), (67, 6493),

Gene: NarutoRun_17 Start: 9282, Stop: 9638, Start Num: 13

Candidate Starts for NarutoRun_17:

(Start: 13 @9282 has 81 MA's), (43, 9489), (48, 9546), (59, 9624),

Gene: Neptune_17 Start: 9256, Stop: 9612, Start Num: 13

Candidate Starts for Neptune_17:

(Start: 13 @9256 has 81 MA's), (43, 9463), (48, 9520), (59, 9598),

Gene: NorManre_15 Start: 11216, Stop: 11605, Start Num: 12

Candidate Starts for NorManre_15:

(Start: 12 @11216 has 37 MA's), (30, 11372), (31, 11378), (32, 11381), (43, 11426),

Gene: Nova_15 Start: 10876, Stop: 11298, Start Num: 13

Candidate Starts for Nova_15:

(Start: 13 @10876 has 81 MA's), (23, 10972), (27, 10999), (29, 11023), (31, 11032), (33, 11038), (41, 11071), (43, 11080), (60, 11257),

Gene: NovaSharks_13 Start: 9224, Stop: 9613, Start Num: 12

Candidate Starts for NovaSharks_13:

(Start: 12 @9224 has 37 MA's), (30, 9380), (31, 9386), (32, 9389), (43, 9434),

Gene: Oaker_14 Start: 10037, Stop: 10543, Start Num: 11

Candidate Starts for Oaker_14:

(Start: 11 @10037 has 12 MA's), (21, 10142), (27, 10178), (29, 10202), (40, 10280), (42, 10289), (43, 10292), (52, 10379), (63, 10469), (68, 10520),

Gene: OhDear_17 Start: 9285, Stop: 9641, Start Num: 13

Candidate Starts for OhDear_17:

(Start: 13 @9285 has 81 MA's), (43, 9492), (48, 9549), (59, 9627),

Gene: Onyinye_27 Start: 16462, Stop: 16890, Start Num: 13

Candidate Starts for Onyinye_27:

(Start: 13 @16462 has 81 MA's), (27, 16585), (31, 16618), (32, 16621), (34, 16627), (41, 16675), (43, 16684), (55, 16813), (56, 16831),

Gene: OtterstedtS21_14 Start: 11306, Stop: 11695, Start Num: 12

Candidate Starts for OtterstedtS21_14:

(Start: 12 @11306 has 37 MA's), (30, 11462), (31, 11468), (32, 11471), (43, 11516), (54, 11609),

Gene: OverHedge_17 Start: 9253, Stop: 9609, Start Num: 13

Candidate Starts for OverHedge_17:

(Start: 13 @9253 has 81 MA's), (43, 9460), (48, 9517), (59, 9595),

Gene: PBI1_16 Start: 10383, Stop: 10802, Start Num: 13

Candidate Starts for PBI1_16:

(Start: 13 @10383 has 81 MA's), (23, 10479), (27, 10506), (29, 10530), (31, 10539), (33, 10545), (41, 10578), (43, 10587), (60, 10764),

Gene: PLOT_16 Start: 10455, Stop: 10874, Start Num: 13

Candidate Starts for PLOT_16:

(Start: 13 @10455 has 81 MA's), (21, 10542), (23, 10551), (27, 10578), (29, 10602), (31, 10611), (33, 10617), (41, 10650), (43, 10659), (60, 10836),

Gene: ParvusTarda_14 Start: 10788, Stop: 11177, Start Num: 12

Candidate Starts for ParvusTarda_14:

(Start: 12 @10788 has 37 MA's), (30, 10944), (31, 10950), (32, 10953), (43, 10998), (54, 11091),

Gene: Patience_22 Start: 13312, Stop: 14010, Start Num: 11

Candidate Starts for Patience_22:

(Start: 11 @13312 has 12 MA's), (22, 13420), (31, 13486), (32, 13489), (38, 13525), (48, 13657), (49, 13663), (51, 13669), (66, 13774), (69, 13849), (70, 13984),

Gene: Patos_15 Start: 11216, Stop: 11605, Start Num: 12

Candidate Starts for Patos_15:

(Start: 12 @11216 has 37 MA's), (30, 11372), (31, 11378), (32, 11381), (43, 11426),

Gene: Penelope2018_15 Start: 10452, Stop: 10871, Start Num: 13

Candidate Starts for Penelope2018_15:

(Start: 13 @10452 has 81 MA's), (21, 10539), (23, 10548), (27, 10575), (29, 10599), (31, 10608), (33, 10614), (41, 10647), (43, 10656), (60, 10833),

Gene: Phalaborwa_15 Start: 10494, Stop: 10916, Start Num: 13

Candidate Starts for Phalaborwa_15:

(Start: 13 @10494 has 81 MA's), (23, 10590), (27, 10617), (29, 10641), (31, 10650), (33, 10656), (41, 10689), (43, 10698), (56, 10848), (60, 10875), (62, 10887),

Gene: Pharpay_17 Start: 9301, Stop: 9657, Start Num: 13

Candidate Starts for Pharpay_17:

(Start: 13 @9301 has 81 MA's), (43, 9508), (48, 9565), (59, 9643),

Gene: Phreeze_14 Start: 9778, Stop: 10284, Start Num: 11

Candidate Starts for Phreeze_14:

(Start: 11 @9778 has 12 MA's), (21, 9883), (27, 9919), (29, 9943), (40, 10021), (42, 10030), (43, 10033), (52, 10120), (63, 10210), (68, 10261),

Gene: PhunaPhoke_17 Start: 9274, Stop: 9630, Start Num: 13

Candidate Starts for PhunaPhoke_17:

(Start: 13 @9274 has 81 MA's), (43, 9481), (48, 9538), (59, 9616),

Gene: Potty_17 Start: 9279, Stop: 9635, Start Num: 13

Candidate Starts for Potty_17:

(Start: 13 @9279 has 81 MA's), (43, 9486), (48, 9543), (59, 9621),

Gene: Poultress_16 Start: 9053, Stop: 9412, Start Num: 13

Candidate Starts for Poultress_16:

(Start: 13 @9053 has 81 MA's), (43, 9260), (45, 9278), (59, 9398),

Gene: Prager_15 Start: 10461, Stop: 10880, Start Num: 13

Candidate Starts for Prager_15:

(Start: 13 @10461 has 81 MA's), (23, 10557), (27, 10584), (29, 10608), (31, 10617), (33, 10623), (41, 10656), (43, 10665), (60, 10842),

Gene: Predator_18 Start: 11335, Stop: 11802, Start Num: 11

Candidate Starts for Predator_18:

(Start: 11 @11335 has 12 MA's), (18, 11407), (36, 11536), (39, 11551), (42, 11587), (43, 11590), (52, 11677), (63, 11767), (64, 11770),

Gene: Puissant_13 Start: 10247, Stop: 10702, Start Num: 11

Candidate Starts for Puissant_13:

(Start: 11 @10247 has 12 MA's), (17, 10313), (21, 10352), (29, 10412), (31, 10421), (42, 10499), (43, 10502), (52, 10589), (62, 10673), (63, 10679),

Gene: Rachella_17 Start: 9285, Stop: 9641, Start Num: 13

Candidate Starts for Rachella_17:

(Start: 13 @9285 has 81 MA's), (43, 9492), (48, 9549), (59, 9627),

Gene: Ranch_14 Start: 10154, Stop: 10543, Start Num: 12

Candidate Starts for Ranch_14:

(Start: 12 @10154 has 37 MA's), (30, 10310), (31, 10316), (32, 10319), (43, 10364),

Gene: RazorC_13 Start: 9224, Stop: 9613, Start Num: 12

Candidate Starts for RazorC_13:

(Start: 12 @9224 has 37 MA's), (30, 9380), (31, 9386), (32, 9389), (43, 9434),

Gene: Riduram_13 Start: 9194, Stop: 9583, Start Num: 12

Candidate Starts for Riduram_13:

(Start: 12 @9194 has 37 MA's), (30, 9350), (31, 9356), (32, 9359), (43, 9404),

Gene: Rie18_17 Start: 8639, Stop: 8995, Start Num: 13

Candidate Starts for Rie18_17:

(3, 8312), (Start: 13 @8639 has 81 MA's), (43, 8846), (48, 8903), (59, 8981),

Gene: RikSengupta_18 Start: 9208, Stop: 9564, Start Num: 13

Candidate Starts for RikSengupta_18:

(Start: 13 @9208 has 81 MA's), (16, 9244), (23, 9304), (41, 9403),

Gene: Rota_14 Start: 11112, Stop: 11501, Start Num: 12

Candidate Starts for Rota_14:

(Start: 12 @11112 has 37 MA's), (30, 11268), (31, 11274), (32, 11277), (43, 11322),

Gene: Rukungu_15 Start: 11853, Stop: 12242, Start Num: 12

Candidate Starts for Rukungu_15:

(Start: 12 @11853 has 37 MA's), (30, 12009), (31, 12015), (32, 12018), (43, 12063),

Gene: Rumi_13 Start: 9224, Stop: 9613, Start Num: 12

Candidate Starts for Rumi_13:

(Start: 12 @9224 has 37 MA's), (30, 9380), (31, 9386), (32, 9389), (43, 9434),

Gene: Sadboi_14 Start: 11984, Stop: 12373, Start Num: 12

Candidate Starts for Sadboi_14:

(Start: 12 @11984 has 37 MA's), (30, 12140), (31, 12146), (32, 12149), (43, 12194),

Gene: Sampudon_15 Start: 12160, Stop: 12549, Start Num: 12

Candidate Starts for Sampudon_15:

(Start: 12 @12160 has 37 MA's), (30, 12316), (31, 12322), (32, 12325), (43, 12370),

Gene: Shrew_49 Start: 23926, Stop: 24369, Start Num: 8

Candidate Starts for Shrew_49:

(Start: 8 @23926 has 1 MA's), (24, 24088), (25, 24097), (37, 24175), (43, 24199),

Gene: Sienna_10 Start: 6697, Stop: 7074, Start Num: 13

Candidate Starts for Sienna_10:

(Start: 13 @6697 has 81 MA's), (43, 6901), (53, 6976),

Gene: SilentWarrior_16 Start: 8490, Stop: 8849, Start Num: 13

Candidate Starts for SilentWarrior_16:

(Start: 13 @8490 has 81 MA's), (43, 8697), (45, 8715), (59, 8835),

Gene: SirHarley_14 Start: 10381, Stop: 10803, Start Num: 13

Candidate Starts for SirHarley_14:

(Start: 13 @10381 has 81 MA's), (23, 10477), (27, 10504), (29, 10528), (31, 10537), (33, 10543), (41, 10576), (43, 10585), (60, 10762),

Gene: Snakehole_18 Start: 8578, Stop: 8937, Start Num: 13

Candidate Starts for Snakehole_18:

(Start: 13 @8578 has 81 MA's), (43, 8785), (45, 8803), (59, 8923),

Gene: Sparcetus_18 Start: 9087, Stop: 9443, Start Num: 13

Candidate Starts for Sparcetus_18:

(Start: 13 @9087 has 81 MA's), (16, 9123), (23, 9183), (41, 9282),

Gene: Stormer_13 Start: 9224, Stop: 9613, Start Num: 12

Candidate Starts for Stormer_13:

(Start: 12 @9224 has 37 MA's), (30, 9380), (31, 9386), (32, 9389), (43, 9434),

Gene: SuperSonics_21 Start: 12479, Stop: 13177, Start Num: 11

Candidate Starts for SuperSonics_21:

(Start: 11 @12479 has 12 MA's), (22, 12587), (31, 12653), (32, 12656), (38, 12692), (48, 12824), (49, 12830), (51, 12836), (66, 12941), (69, 13016), (70, 13151),

Gene: SuperheroCarly_15 Start: 10314, Stop: 10733, Start Num: 13

Candidate Starts for SuperheroCarly_15:

(Start: 13 @10314 has 81 MA's), (21, 10401), (23, 10410), (27, 10437), (29, 10461), (31, 10470), (33, 10476), (41, 10509), (43, 10518), (60, 10695),

Gene: Suzy_11 Start: 7940, Stop: 8317, Start Num: 13

Candidate Starts for Suzy_11:

(Start: 13 @7940 has 81 MA's), (21, 8027), (41, 8135), (43, 8144), (53, 8219),

Gene: Tedro_17 Start: 8752, Stop: 9108, Start Num: 13

Candidate Starts for Tedro_17:

(Start: 13 @8752 has 81 MA's), (43, 8959), (48, 9016), (59, 9094),

Gene: Terapin_10 Start: 6697, Stop: 7074, Start Num: 13

Candidate Starts for Terapin_10:

(Start: 13 @6697 has 81 MA's), (43, 6901), (53, 6976),

Gene: Thoth_15 Start: 10449, Stop: 10868, Start Num: 13

Candidate Starts for Thoth_15:

(Start: 13 @10449 has 81 MA's), (21, 10536), (23, 10545), (27, 10572), (29, 10596), (31, 10605), (33, 10611), (41, 10644), (43, 10653), (60, 10830),

Gene: Thumb_14 Start: 9779, Stop: 10285, Start Num: 11

Candidate Starts for Thumb_14:

(Start: 11 @9779 has 12 MA's), (21, 9884), (27, 9920), (29, 9944), (40, 10022), (42, 10031), (43, 10034), (52, 10121), (63, 10211), (68, 10262),

Gene: Tillicus_15 Start: 10534, Stop: 10923, Start Num: 12

Candidate Starts for Tillicus_15:

(Start: 12 @10534 has 37 MA's), (43, 10744),

Gene: TinyMiny_18 Start: 9106, Stop: 9462, Start Num: 13

Candidate Starts for TinyMiny_18:

(Start: 13 @9106 has 81 MA's), (16, 9142), (23, 9202), (41, 9301),

Gene: Tongui_16 Start: 8625, Stop: 8984, Start Num: 13

Candidate Starts for Tongui_16:

(Start: 13 @8625 has 81 MA's), (43, 8832), (45, 8850), (59, 8970),

Gene: Triscuit_37 Start: 19392, Stop: 19853, Start Num: 7

Candidate Starts for Triscuit_37:

(Start: 7 @19392 has 2 MA's), (14, 19488), (18, 19518), (24, 19563), (28, 19608), (45, 19689),

Gene: Troll4_15 Start: 10453, Stop: 10872, Start Num: 13

Candidate Starts for Troll4_15:

(Start: 13 @10453 has 81 MA's), (21, 10540), (23, 10549), (27, 10576), (29, 10600), (31, 10609), (33, 10615), (41, 10648), (43, 10657), (60, 10834),

Gene: Visconti_15 Start: 10462, Stop: 10881, Start Num: 13

Candidate Starts for Visconti_15:

(Start: 13 @10462 has 81 MA's), (21, 10549), (23, 10558), (27, 10585), (29, 10609), (31, 10618), (33, 10624), (41, 10657), (43, 10666), (60, 10843),

Gene: WaldoWhy_16 Start: 10455, Stop: 10874, Start Num: 13

Candidate Starts for WaldoWhy_16:

(Start: 13 @10455 has 81 MA's), (21, 10542), (23, 10551), (27, 10578), (29, 10602), (31, 10611), (33, 10617), (41, 10650), (43, 10659), (60, 10836),

Gene: Wojtek_13 Start: 10861, Stop: 11250, Start Num: 12

Candidate Starts for Wojtek_13:

(Start: 12 @10861 has 37 MA's), (42, 11068), (43, 11071), (46, 11104),

Gene: Wollypog_5 Start: 5809, Stop: 6210, Start Num: 13

Candidate Starts for Wollypog_5:

(Start: 13 @5809 has 81 MA's), (47, 6064), (50, 6082),

Gene: Xenia2_14 Start: 10903, Stop: 11289, Start Num: 12

Candidate Starts for Xenia2_14:

(Start: 12 @10903 has 37 MA's), (17, 10957), (22, 10999), (32, 11068), (43, 11113),

Gene: Yikes_15 Start: 12245, Stop: 12634, Start Num: 12

Candidate Starts for Yikes_15:

(Start: 12 @12245 has 37 MA's), (30, 12401), (31, 12407), (32, 12410), (43, 12455),

Gene: Zany_14 Start: 11374, Stop: 11763, Start Num: 12

Candidate Starts for Zany_14:

(Start: 12 @11374 has 37 MA's), (30, 11530), (31, 11536), (32, 11539), (43, 11584), (65, 11755),