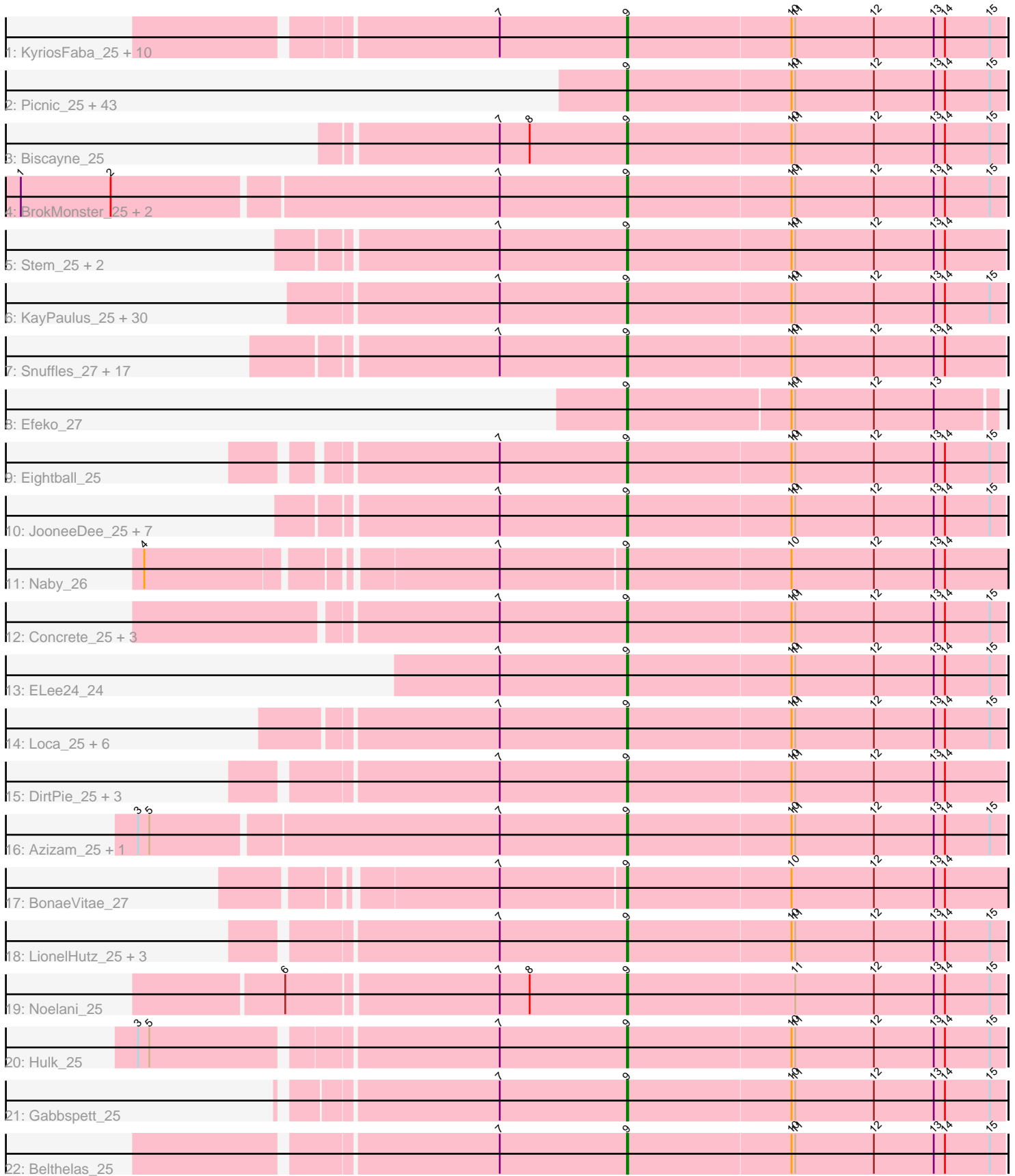


Pham 294498



Note: Tracks are now grouped by subcluster and scaled. Switching in subcluster is indicated by changes in track color. Track scale is now set by default to display the region 30 bp upstream of start 1 to 30 bp downstream of the last possible start. If this default region is judged to be packed too tightly with annotated starts, the track will be further scaled to only show that region of the ORF with annotated starts. This action will be indicated by adding "Zoomed" to the title. For starts, yellow indicates the location of called starts comprised solely of Glimmer/GeneMark auto-annotations, green indicates the location of called starts with at least 1 manual gene annotation.

Pham 294498 Report

This analysis was run 04/18/26 on database version 643.

Pham number 294498 has 149 members, 11 are drafts.

Phages represented in each track:

- Track 1 : KyriosFaba_25, Bradley2_25, Anseraureola_25, Lola20_25, Jahseh_25, Gillker_25, EdElric_25, Yasuo_25, Danimal_25, Cayde6_25, Baine_25
- Track 2 : Picnic_25, Majesty_25, Luxx_25, Goobery_25, JaimeB_25, Ciel_25, NeumannU_25, GoldenBlanche_25, BarBear_25, Aztec_25, Pondwater_25, Jannah_25, Sachet_26, Witch_25, Goulash_26, Erin_25, Yubaba_25, Astro16_25, Minima_25, Chatham_25, Myram_25, Dongwon_25, Horacetta_25, Gardevoir_25, SeaWolves_25, Slentz_25, Jella_27, YertPhresh_25, Hernandez44_25, JoBros_25, Alucard_25, BurtonThePup_25, ManAs_25, Dooby_25, LemonPepper_25, Puddles3_26, Sara_25, Owens_25, Picconator_26, Scrunchy_25, Octopus_25, Tyrellus_26, PaoPu_25, BinkBonk_25
- Track 3 : Biscayne_25
- Track 4 : BrokMonster_25, JRok_25, McShie_25
- Track 5 : Stem_25, Nobel_25, Niffler_25
- Track 6 : KayPaulus_25, Kaijohn_25, MrGreen_25, Avvas_25, OdetoJoy_28, Scamander_25, Kojax4_25, Burgy_25, Madebyisha_25, Otwor_25, Wolfpack_25, Vanisius_25, Jerky_25, LaviMo_25, Bodhi17_25, SantasSleigh_25, Maneater_25, Zahlia_25, Godfather_25, Sage7_25, Cheesecake_25, Rhysand_25, Danno_25, Grayscar_27, RoscoWindex_25, Charbie_25, TimoTea_25, Sippinontea_25, Aries55_25, VitulaEligans_25, Josuke_25
- Track 7 : Snuffles_27, TinyTruffula_25, Mauilvory_24, Publix_26, IzzyPants24_25, Clownery_25, Trireme_25, Rira_25, Trackstar_25, Yami_25, Bullzi2019_26, Slizam_25, TomBrady12_26, Miaurora_25, Lunatic_25, Namsahir_27, Cazares_25, PuffyCat_25
- Track 8 : Efeko_27
- Track 9 : Eightball_25
- Track 10 : JooneeDee_25, Bintii_25, MirimarMandM_25, Elspeth_26, HarperAnne_26, Ekko14_26, PoRanda_25, Upsilon_25
- Track 11 : Naby_26
- Track 12 : Concrete_25, KillerTomato_25, BoomRoasted_25, Bri160_25
- Track 13 : ELee24_24
- Track 14 : Loca_25, Leafy_25, Kevanna_25, Livingwater_25, Douggie_25, MelBee03_25, Quaker_25
- Track 15 : DirtPie_25, Marichuy_26, MasterPitts_25, DaftyDuck_25
- Track 16 : Azizam_25, Oaklynn_25
- Track 17 : BonaeVitae_27
- Track 18 : LionelHutz_25, HeadMave_25, TeddyBoy_25, Rhogar_25
- Track 19 : Noelani_25

- Track 20 : Hulk_25
- Track 21 : Gabbspett_25
- Track 22 : Belthelas_25

Summary of Final Annotations (See graph section above for start numbers):

The start number called the most often in the published annotations is 9, it was called in 138 of the 138 non-draft genes in the pham.

Genes that call this "Most Annotated" start:

- Alucard_25, Anseraureola_25, Aries55_25, Astro16_25, Avvas_25, Azizam_25, Aztec_25, Baine_25, BarBear_25, Belthelas_25, BinkBonk_25, Bintii_25, Biscayne_25, Bodhi17_25, BonaeVitae_27, BoomRoasted_25, Bradley2_25, Bri160_25, BrokMonster_25, Bullzi2019_26, Burgy_25, BurtonThePup_25, Cayde6_25, Cazares_25, Charbie_25, Chatham_25, Cheesecake_25, Ciel_25, Clownery_25, Concrete_25, DaftyDuck_25, Danimal_25, Danno_25, DirtPie_25, Dongwon_25, Dooby_25, Douggie_25, ELee24_24, EdElric_25, Efeko_27, Eightball_25, Ekko14_26, Elspeth_26, Erin_25, Gabbspett_25, Gardevoir_25, Gillker_25, Godfather_25, GoldenBlanche_25, Goobery_25, Goulash_26, Grayscar_27, HarperAnne_26, HeadMave_25, Hernandez44_25, Horacetta_25, Hulk_25, IzzyPants24_25, JRok_25, Jahseh_25, JaimeB_25, Jannah_25, Jella_27, Jerky_25, JoBros_25, JooneeDee_25, Josuke_25, Kaijohn_25, KayPaulus_25, Kevanna_25, KillerTomato_25, Kojax4_25, KyriosFaba_25, LaviMo_25, Leafy_25, LemonPepper_25, LionelHutz_25, Livingwater_25, Loca_25, Lola20_25, Lunatic_25, Luxx_25, Madebyisha_25, Majesty_25, ManAs_25, Maneater_25, Marichuy_26, MasterPitts_25, Mauilvory_24, McShie_25, MelBee03_25, Miaurora_25, Minima_25, MirimarMandM_25, MrGreen_25, Myram_25, Naby_26, Namsahir_27, NeumannU_25, Niffler_25, Nobel_25, Noelani_25, Oaklynn_25, Octopus_25, OdetoJoy_28, Otwor_25, Owens_25, PaoPu_25, Picconator_26, Picnic_25, PoRanda_25, Pondwater_25, Publix_26, Puddles3_26, PuffyCat_25, Quaker_25, Rhogar_25, Rhysand_25, Rira_25, RoscoWindex_25, Sachet_26, Sage7_25, SantasSleigh_25, Sara_25, Scamander_25, Scrunchy_25, SeaWolves_25, Sippinontea_25, Slentz_25, Slizam_25, Snuffles_27, Stem_25, TeddyBoy_25, TimoTea_25, TinyTruffula_25, TomBrady12_26, Trackstar_25, Trireme_25, Tyrellus_26, Upsilon_25, Vanisius_25, VitulaEligans_25, Witch_25, Wolfpack_25, Yami_25, Yasuo_25, YertPhresh_25, Yubaba_25, Zahlia_25,

Genes that have the "Most Annotated" start but do not call it:

-

Genes that do not have the "Most Annotated" start:

-

Summary by start number:

Start 9:

- Found in 149 of 149 (100.0%) of genes in pham
- Manual Annotations of this start: 138 of 138
- Called 100.0% of time when present

- Phage (with cluster) where this start called: Alucard_25 (EE), Anseraureola_25 (EE), Aries55_25 (EE), Astro16_25 (EE), Avvas_25 (EE), Azizam_25 (EE), Aztec_25 (EE), Baine_25 (EE), BarBear_25 (EE), Belthelas_25 (EE), BinkBonk_25 (EE), Bintii_25 (EE), Biscayne_25 (EE), Bodhi17_25 (EE), BonaeVitae_27 (EE), BoomRoasted_25 (EE), Bradley2_25 (EE), Bri160_25 (EE), BrokMonster_25 (EE), Bullzi2019_26 (EE), Burgy_25 (EE), BurtonThePup_25 (EE), Cayde6_25 (EE), Cazares_25 (EE), Charbie_25 (EE), Chatham_25 (EE), Cheesecake_25 (EE), Ciel_25 (EE), Clownery_25 (EE), Concrete_25 (EE), DaftyDuck_25 (EE), Danimal_25 (EE), Danno_25 (EE), DirtPie_25 (EE), Dongwon_25 (EE), Dooby_25 (EE), Duggie_25 (EE), ELee24_24 (EE), EdElric_25 (EE), Efeko_27 (EE), Eightball_25 (EE), Ekko14_26 (EE), Elspeth_26 (EE), Erin_25 (EE), Gabbspett_25 (EE), Gardevoir_25 (EE), Gillker_25 (EE), Godfather_25 (EE), GoldenBlanche_25 (EE), Goobery_25 (EE), Goulash_26 (EE), Grayscar_27 (EE), HarperAnne_26 (EE), HeadMave_25 (EE), Hernandez44_25 (EE), Horacetta_25 (EE), Hulk_25 (EE), IzzyPants24_25 (EE), JRok_25 (EE), Jahseh_25 (EE), JaimeB_25 (EE), Jannah_25 (EE), Jella_27 (EE), Jerky_25 (EE), JoBros_25 (EE), JooneeDee_25 (EE), Josuke_25 (EE), Kaijohn_25 (EE), KayPaulus_25 (EE), Kevanna_25 (EE), KillerTomato_25 (EE), Kojax4_25 (EE), KyriosFaba_25 (EE), LaviMo_25 (EE), Leafy_25 (EE), LemonPepper_25 (EE), LionelHutz_25 (EE), Livingwater_25 (EE), Loca_25 (EE), Lola20_25 (EE), Lunatic_25 (EE), Luxx_25 (EE), Madebyisha_25 (EE), Majesty_25 (EE), ManAs_25 (EE), Maneater_25 (EE), Marichuy_26 (EE), MasterPitts_25 (EE), Mauilvory_24 (EE), McShie_25 (EE), MelBee03_25 (EE), Miaurora_25 (EE), Minima_25 (EE), MirimarMandM_25 (EE), MrGreen_25 (EE), Myram_25 (EE), Naby_26 (EE), Namsahir_27 (EE), NeumannU_25 (EE), Niffler_25 (EE), Nobel_25 (EE), Noelani_25 (EE), Oaklynn_25 (EE), Octopus_25 (EE), OdetoJoy_28 (EE), Otwor_25 (EE), Owens_25 (EE), PaoPu_25 (EE), Picconator_26 (EE), Picnic_25 (EE), PoRanda_25 (EE), Pondwater_25 (EE), Publix_26 (EE), Puddles3_26 (EE), PuffyCat_25 (EE), Quaker_25 (EE), Rhogar_25 (EE), Rhysand_25 (EE), Rira_25 (EE), RoscoWindex_25 (EE), Sachet_26 (EE), Sage7_25 (EE), SantasSleigh_25 (EE), Sara_25 (EE), Scamander_25 (EE), Scrunchy_25 (EE), SeaWolves_25 (EE), Sippinontea_25 (EE), Slentz_25 (EE), Slizam_25 (EE), Snuffles_27 (EE), Stem_25 (EE), TeddyBoy_25 (EE), TimoTea_25 (EE), TinyTruffula_25 (EE), TomBrady12_26 (EE), Trackstar_25 (EE), Trireme_25 (EE), Tyrellus_26 (EE), Upsilon_25 (EE), Vanisius_25 (EE), VitulaEligans_25 (EE), Witch_25 (EE), Wolfpack_25 (EE), Yami_25 (EE), Yasuo_25 (EE), YertPhresh_25 (EE), Yubaba_25 (EE), Zahlia_25 (EE),

Summary by clusters:

There is one cluster represented in this pham: EE

Info for manual annotations of cluster EE:

- Start number 9 was manually annotated 138 times for cluster EE.

Gene Information:

Gene: Alucard_25 Start: 16990, Stop: 17289, Start Num: 9

Candidate Starts for Alucard_25:

(Start: 9 @16990 has 138 MA's), (10, 17119), (11, 17122), (12, 17185), (13, 17233), (14, 17242), (15, 17278),

Gene: Anseraureola_25 Start: 17052, Stop: 17351, Start Num: 9

Candidate Starts for Anseraureola_25:

(7, 16950), (Start: 9 @17052 has 138 MA's), (10, 17181), (11, 17184), (12, 17247), (13, 17295), (14, 17304), (15, 17340),

Gene: Aries55_25 Start: 17079, Stop: 17378, Start Num: 9

Candidate Starts for Aries55_25:

(7, 16977), (Start: 9 @17079 has 138 MA's), (10, 17208), (11, 17211), (12, 17274), (13, 17322), (14, 17331), (15, 17367),

Gene: Astro16_25 Start: 17072, Stop: 17371, Start Num: 9

Candidate Starts for Astro16_25:

(Start: 9 @17072 has 138 MA's), (10, 17201), (11, 17204), (12, 17267), (13, 17315), (14, 17324), (15, 17360),

Gene: Avvas_25 Start: 17079, Stop: 17378, Start Num: 9

Candidate Starts for Avvas_25:

(7, 16977), (Start: 9 @17079 has 138 MA's), (10, 17208), (11, 17211), (12, 17274), (13, 17322), (14, 17331), (15, 17367),

Gene: Azizam_25 Start: 17012, Stop: 17311, Start Num: 9

Candidate Starts for Azizam_25:

(3, 16631), (5, 16640), (7, 16910), (Start: 9 @17012 has 138 MA's), (10, 17141), (11, 17144), (12, 17207), (13, 17255), (14, 17264), (15, 17300),

Gene: Aztec_25 Start: 16995, Stop: 17294, Start Num: 9

Candidate Starts for Aztec_25:

(Start: 9 @16995 has 138 MA's), (10, 17124), (11, 17127), (12, 17190), (13, 17238), (14, 17247), (15, 17283),

Gene: Baine_25 Start: 17015, Stop: 17314, Start Num: 9

Candidate Starts for Baine_25:

(7, 16913), (Start: 9 @17015 has 138 MA's), (10, 17144), (11, 17147), (12, 17210), (13, 17258), (14, 17267), (15, 17303),

Gene: BarBear_25 Start: 17072, Stop: 17371, Start Num: 9

Candidate Starts for BarBear_25:

(Start: 9 @17072 has 138 MA's), (10, 17201), (11, 17204), (12, 17267), (13, 17315), (14, 17324), (15, 17360),

Gene: Belthelas_25 Start: 17128, Stop: 17427, Start Num: 9

Candidate Starts for Belthelas_25:

(7, 17026), (Start: 9 @17128 has 138 MA's), (10, 17257), (11, 17260), (12, 17323), (13, 17371), (14, 17380), (15, 17416),

Gene: BinkBonk_25 Start: 17072, Stop: 17371, Start Num: 9

Candidate Starts for BinkBonk_25:

(Start: 9 @17072 has 138 MA's), (10, 17201), (11, 17204), (12, 17267), (13, 17315), (14, 17324), (15, 17360),

Gene: Bintii_25 Start: 17094, Stop: 17393, Start Num: 9

Candidate Starts for Bintii_25:

(7, 16992), (Start: 9 @17094 has 138 MA's), (10, 17223), (11, 17226), (12, 17289), (13, 17337), (14, 17346), (15, 17382),

Gene: Biscayne_25 Start: 17155, Stop: 17454, Start Num: 9

Candidate Starts for Biscayne_25:

(7, 17053), (8, 17077), (Start: 9 @17155 has 138 MA's), (10, 17284), (11, 17287), (12, 17350), (13, 17398), (14, 17407), (15, 17443),

Gene: Bodhi17_25 Start: 17109, Stop: 17408, Start Num: 9

Candidate Starts for Bodhi17_25:

(7, 17007), (Start: 9 @17109 has 138 MA's), (10, 17238), (11, 17241), (12, 17304), (13, 17352), (14, 17361), (15, 17397),

Gene: BonaeVitae_27 Start: 17082, Stop: 17384, Start Num: 9

Candidate Starts for BonaeVitae_27:

(7, 16983), (Start: 9 @17082 has 138 MA's), (10, 17211), (12, 17277), (13, 17325), (14, 17334),

Gene: BoomRoasted_25 Start: 17082, Stop: 17381, Start Num: 9

Candidate Starts for BoomRoasted_25:

(7, 16980), (Start: 9 @17082 has 138 MA's), (10, 17211), (11, 17214), (12, 17277), (13, 17325), (14, 17334), (15, 17370),

Gene: Bradley2_25 Start: 16994, Stop: 17293, Start Num: 9

Candidate Starts for Bradley2_25:

(7, 16892), (Start: 9 @16994 has 138 MA's), (10, 17123), (11, 17126), (12, 17189), (13, 17237), (14, 17246), (15, 17282),

Gene: Bri160_25 Start: 17069, Stop: 17368, Start Num: 9

Candidate Starts for Bri160_25:

(7, 16967), (Start: 9 @17069 has 138 MA's), (10, 17198), (11, 17201), (12, 17264), (13, 17312), (14, 17321), (15, 17357),

Gene: BrokMonster_25 Start: 17060, Stop: 17359, Start Num: 9

Candidate Starts for BrokMonster_25:

(1, 16586), (2, 16658), (7, 16958), (Start: 9 @17060 has 138 MA's), (10, 17189), (11, 17192), (12, 17255), (13, 17303), (14, 17312), (15, 17348),

Gene: Bullzi2019_26 Start: 16770, Stop: 17069, Start Num: 9

Candidate Starts for Bullzi2019_26:

(7, 16668), (Start: 9 @16770 has 138 MA's), (10, 16899), (11, 16902), (12, 16965), (13, 17013), (14, 17022),

Gene: Burgy_25 Start: 17080, Stop: 17379, Start Num: 9

Candidate Starts for Burgy_25:

(7, 16978), (Start: 9 @17080 has 138 MA's), (10, 17209), (11, 17212), (12, 17275), (13, 17323), (14, 17332), (15, 17368),

Gene: BurtonThePup_25 Start: 17072, Stop: 17371, Start Num: 9

Candidate Starts for BurtonThePup_25:

(Start: 9 @17072 has 138 MA's), (10, 17201), (11, 17204), (12, 17267), (13, 17315), (14, 17324), (15, 17360),

Gene: Cayde6_25 Start: 17015, Stop: 17314, Start Num: 9

Candidate Starts for Cayde6_25:

(7, 16913), (Start: 9 @17015 has 138 MA's), (10, 17144), (11, 17147), (12, 17210), (13, 17258), (14, 17267), (15, 17303),

Gene: Cazares_25 Start: 16542, Stop: 16841, Start Num: 9

Candidate Starts for Cazares_25:

(7, 16440), (Start: 9 @16542 has 138 MA's), (10, 16671), (11, 16674), (12, 16737), (13, 16785), (14, 16794),

Gene: Charbie_25 Start: 17055, Stop: 17354, Start Num: 9

Candidate Starts for Charbie_25:

(7, 16953), (Start: 9 @17055 has 138 MA's), (10, 17184), (11, 17187), (12, 17250), (13, 17298), (14, 17307), (15, 17343),

Gene: Chatham_25 Start: 16989, Stop: 17288, Start Num: 9

Candidate Starts for Chatham_25:

(Start: 9 @16989 has 138 MA's), (10, 17118), (11, 17121), (12, 17184), (13, 17232), (14, 17241), (15, 17277),

Gene: Cheesecake_25 Start: 17080, Stop: 17379, Start Num: 9

Candidate Starts for Cheesecake_25:

(7, 16978), (Start: 9 @17080 has 138 MA's), (10, 17209), (11, 17212), (12, 17275), (13, 17323), (14, 17332), (15, 17368),

Gene: Ciel_25 Start: 17072, Stop: 17371, Start Num: 9

Candidate Starts for Ciel_25:

(Start: 9 @17072 has 138 MA's), (10, 17201), (11, 17204), (12, 17267), (13, 17315), (14, 17324), (15, 17360),

Gene: Clownery_25 Start: 16668, Stop: 16967, Start Num: 9

Candidate Starts for Clownery_25:

(7, 16566), (Start: 9 @16668 has 138 MA's), (10, 16797), (11, 16800), (12, 16863), (13, 16911), (14, 16920),

Gene: Concrete_25 Start: 17059, Stop: 17358, Start Num: 9

Candidate Starts for Concrete_25:

(7, 16957), (Start: 9 @17059 has 138 MA's), (10, 17188), (11, 17191), (12, 17254), (13, 17302), (14, 17311), (15, 17347),

Gene: DaftyDuck_25 Start: 17012, Stop: 17311, Start Num: 9

Candidate Starts for DaftyDuck_25:

(7, 16910), (Start: 9 @17012 has 138 MA's), (10, 17141), (11, 17144), (12, 17207), (13, 17255), (14, 17264),

Gene: Danimal_25 Start: 16991, Stop: 17290, Start Num: 9

Candidate Starts for Danimal_25:

(7, 16889), (Start: 9 @16991 has 138 MA's), (10, 17120), (11, 17123), (12, 17186), (13, 17234), (14, 17243), (15, 17279),

Gene: Danno_25 Start: 17079, Stop: 17378, Start Num: 9

Candidate Starts for Danno_25:

(7, 16977), (Start: 9 @17079 has 138 MA's), (10, 17208), (11, 17211), (12, 17274), (13, 17322), (14, 17331), (15, 17367),

Gene: DirtPie_25 Start: 17105, Stop: 17404, Start Num: 9

Candidate Starts for DirtPie_25:

(7, 17003), (Start: 9 @17105 has 138 MA's), (10, 17234), (11, 17237), (12, 17300), (13, 17348), (14, 17357),

Gene: Dongwon_25 Start: 16989, Stop: 17288, Start Num: 9

Candidate Starts for Dongwon_25:

(Start: 9 @16989 has 138 MA's), (10, 17118), (11, 17121), (12, 17184), (13, 17232), (14, 17241), (15, 17277),

Gene: Dooby_25 Start: 16989, Stop: 17288, Start Num: 9

Candidate Starts for Dooby_25:

(Start: 9 @16989 has 138 MA's), (10, 17118), (11, 17121), (12, 17184), (13, 17232), (14, 17241), (15, 17277),

Gene: Douggie_25 Start: 17065, Stop: 17364, Start Num: 9

Candidate Starts for Douggie_25:

(7, 16963), (Start: 9 @17065 has 138 MA's), (10, 17194), (11, 17197), (12, 17260), (13, 17308), (14, 17317), (15, 17353),

Gene: ELee24_24 Start: 16858, Stop: 17157, Start Num: 9

Candidate Starts for ELee24_24:

(7, 16756), (Start: 9 @16858 has 138 MA's), (10, 16987), (11, 16990), (12, 17053), (13, 17101), (14, 17110), (15, 17146),

Gene: EdElric_25 Start: 16989, Stop: 17288, Start Num: 9

Candidate Starts for EdElric_25:

(7, 16887), (Start: 9 @16989 has 138 MA's), (10, 17118), (11, 17121), (12, 17184), (13, 17232), (14, 17241), (15, 17277),

Gene: Efeke_27 Start: 16867, Stop: 17157, Start Num: 9

Candidate Starts for Efeke_27:

(Start: 9 @16867 has 138 MA's), (10, 16996), (11, 16999), (12, 17062), (13, 17110),

Gene: Eightball_25 Start: 17066, Stop: 17365, Start Num: 9

Candidate Starts for Eightball_25:

(7, 16964), (Start: 9 @17066 has 138 MA's), (10, 17195), (11, 17198), (12, 17261), (13, 17309), (14, 17318), (15, 17354),

Gene: Ekko14_26 Start: 16744, Stop: 17043, Start Num: 9

Candidate Starts for Ekko14_26:

(7, 16642), (Start: 9 @16744 has 138 MA's), (10, 16873), (11, 16876), (12, 16939), (13, 16987), (14, 16996), (15, 17032),

Gene: Elspeth_26 Start: 16744, Stop: 17043, Start Num: 9

Candidate Starts for Elspeth_26:

(7, 16642), (Start: 9 @16744 has 138 MA's), (10, 16873), (11, 16876), (12, 16939), (13, 16987), (14, 16996), (15, 17032),

Gene: Erin_25 Start: 16987, Stop: 17286, Start Num: 9

Candidate Starts for Erin_25:

(Start: 9 @16987 has 138 MA's), (10, 17116), (11, 17119), (12, 17182), (13, 17230), (14, 17239), (15, 17275),

Gene: Gabbspett_25 Start: 17109, Stop: 17408, Start Num: 9

Candidate Starts for Gabbspett_25:

(7, 17007), (Start: 9 @17109 has 138 MA's), (10, 17238), (11, 17241), (12, 17304), (13, 17352), (14, 17361), (15, 17397),

Gene: Gardevoir_25 Start: 17023, Stop: 17322, Start Num: 9

Candidate Starts for Gardevoir_25:

(Start: 9 @17023 has 138 MA's), (10, 17152), (11, 17155), (12, 17218), (13, 17266), (14, 17275), (15, 17311),

Gene: Gillker_25 Start: 16988, Stop: 17287, Start Num: 9

Candidate Starts for Gillker_25:

(7, 16886), (Start: 9 @16988 has 138 MA's), (10, 17117), (11, 17120), (12, 17183), (13, 17231), (14, 17240), (15, 17276),

Gene: Godfather_25 Start: 17079, Stop: 17378, Start Num: 9

Candidate Starts for Godfather_25:

(7, 16977), (Start: 9 @17079 has 138 MA's), (10, 17208), (11, 17211), (12, 17274), (13, 17322), (14, 17331), (15, 17367),

Gene: GoldenBlanche_25 Start: 16989, Stop: 17288, Start Num: 9

Candidate Starts for GoldenBlanche_25:

(Start: 9 @16989 has 138 MA's), (10, 17118), (11, 17121), (12, 17184), (13, 17232), (14, 17241), (15, 17277),

Gene: Goobery_25 Start: 17072, Stop: 17371, Start Num: 9

Candidate Starts for Goobery_25:

(Start: 9 @17072 has 138 MA's), (10, 17201), (11, 17204), (12, 17267), (13, 17315), (14, 17324), (15, 17360),

Gene: Goulash_26 Start: 16989, Stop: 17288, Start Num: 9

Candidate Starts for Goulash_26:

(Start: 9 @16989 has 138 MA's), (10, 17118), (11, 17121), (12, 17184), (13, 17232), (14, 17241), (15, 17277),

Gene: Grayscar_27 Start: 17080, Stop: 17379, Start Num: 9

Candidate Starts for Grayscar_27:

(7, 16978), (Start: 9 @17080 has 138 MA's), (10, 17209), (11, 17212), (12, 17275), (13, 17323), (14, 17332), (15, 17368),

Gene: HarperAnne_26 Start: 16743, Stop: 17042, Start Num: 9

Candidate Starts for HarperAnne_26:

(7, 16641), (Start: 9 @16743 has 138 MA's), (10, 16872), (11, 16875), (12, 16938), (13, 16986), (14, 16995), (15, 17031),

Gene: HeadMave_25 Start: 17075, Stop: 17374, Start Num: 9

Candidate Starts for HeadMave_25:

(7, 16973), (Start: 9 @17075 has 138 MA's), (10, 17204), (11, 17207), (12, 17270), (13, 17318), (14, 17327), (15, 17363),

Gene: Hernandez44_25 Start: 17104, Stop: 17403, Start Num: 9
Candidate Starts for Hernandez44_25:
(Start: 9 @17104 has 138 MA's), (10, 17233), (11, 17236), (12, 17299), (13, 17347), (14, 17356), (15, 17392),

Gene: Horacetta_25 Start: 16989, Stop: 17288, Start Num: 9
Candidate Starts for Horacetta_25:
(Start: 9 @16989 has 138 MA's), (10, 17118), (11, 17121), (12, 17184), (13, 17232), (14, 17241), (15, 17277),

Gene: Hulk_25 Start: 17022, Stop: 17321, Start Num: 9
Candidate Starts for Hulk_25:
(3, 16653), (5, 16662), (7, 16920), (Start: 9 @17022 has 138 MA's), (10, 17151), (11, 17154), (12, 17217), (13, 17265), (14, 17274), (15, 17310),

Gene: IzzyPants24_25 Start: 16598, Stop: 16897, Start Num: 9
Candidate Starts for IzzyPants24_25:
(7, 16496), (Start: 9 @16598 has 138 MA's), (10, 16727), (11, 16730), (12, 16793), (13, 16841), (14, 16850),

Gene: JRok_25 Start: 17009, Stop: 17308, Start Num: 9
Candidate Starts for JRok_25:
(1, 16535), (2, 16607), (7, 16907), (Start: 9 @17009 has 138 MA's), (10, 17138), (11, 17141), (12, 17204), (13, 17252), (14, 17261), (15, 17297),

Gene: Jahseh_25 Start: 16995, Stop: 17294, Start Num: 9
Candidate Starts for Jahseh_25:
(7, 16893), (Start: 9 @16995 has 138 MA's), (10, 17124), (11, 17127), (12, 17190), (13, 17238), (14, 17247), (15, 17283),

Gene: JaimeB_25 Start: 17072, Stop: 17371, Start Num: 9
Candidate Starts for JaimeB_25:
(Start: 9 @17072 has 138 MA's), (10, 17201), (11, 17204), (12, 17267), (13, 17315), (14, 17324), (15, 17360),

Gene: Jannah_25 Start: 17055, Stop: 17354, Start Num: 9
Candidate Starts for Jannah_25:
(Start: 9 @17055 has 138 MA's), (10, 17184), (11, 17187), (12, 17250), (13, 17298), (14, 17307), (15, 17343),

Gene: Jella_27 Start: 17090, Stop: 17389, Start Num: 9
Candidate Starts for Jella_27:
(Start: 9 @17090 has 138 MA's), (10, 17219), (11, 17222), (12, 17285), (13, 17333), (14, 17342), (15, 17378),

Gene: Jerky_25 Start: 17154, Stop: 17453, Start Num: 9
Candidate Starts for Jerky_25:
(7, 17052), (Start: 9 @17154 has 138 MA's), (10, 17283), (11, 17286), (12, 17349), (13, 17397), (14, 17406), (15, 17442),

Gene: JoBros_25 Start: 16990, Stop: 17289, Start Num: 9
Candidate Starts for JoBros_25:

(Start: 9 @16990 has 138 MA's), (10, 17119), (11, 17122), (12, 17185), (13, 17233), (14, 17242), (15, 17278),

Gene: JooneeDee_25 Start: 17094, Stop: 17393, Start Num: 9

Candidate Starts for JooneeDee_25:

(7, 16992), (Start: 9 @17094 has 138 MA's), (10, 17223), (11, 17226), (12, 17289), (13, 17337), (14, 17346), (15, 17382),

Gene: Josuke_25 Start: 17080, Stop: 17379, Start Num: 9

Candidate Starts for Josuke_25:

(7, 16978), (Start: 9 @17080 has 138 MA's), (10, 17209), (11, 17212), (12, 17275), (13, 17323), (14, 17332), (15, 17368),

Gene: Kaijohn_25 Start: 17052, Stop: 17351, Start Num: 9

Candidate Starts for Kaijohn_25:

(7, 16950), (Start: 9 @17052 has 138 MA's), (10, 17181), (11, 17184), (12, 17247), (13, 17295), (14, 17304), (15, 17340),

Gene: KayPaulus_25 Start: 17082, Stop: 17381, Start Num: 9

Candidate Starts for KayPaulus_25:

(7, 16980), (Start: 9 @17082 has 138 MA's), (10, 17211), (11, 17214), (12, 17277), (13, 17325), (14, 17334), (15, 17370),

Gene: Kevanna_25 Start: 17068, Stop: 17367, Start Num: 9

Candidate Starts for Kevanna_25:

(7, 16966), (Start: 9 @17068 has 138 MA's), (10, 17197), (11, 17200), (12, 17263), (13, 17311), (14, 17320), (15, 17356),

Gene: KillerTomato_25 Start: 17069, Stop: 17368, Start Num: 9

Candidate Starts for KillerTomato_25:

(7, 16967), (Start: 9 @17069 has 138 MA's), (10, 17198), (11, 17201), (12, 17264), (13, 17312), (14, 17321), (15, 17357),

Gene: Kojax4_25 Start: 17079, Stop: 17378, Start Num: 9

Candidate Starts for Kojax4_25:

(7, 16977), (Start: 9 @17079 has 138 MA's), (10, 17208), (11, 17211), (12, 17274), (13, 17322), (14, 17331), (15, 17367),

Gene: KyriosFaba_25 Start: 16989, Stop: 17288, Start Num: 9

Candidate Starts for KyriosFaba_25:

(7, 16887), (Start: 9 @16989 has 138 MA's), (10, 17118), (11, 17121), (12, 17184), (13, 17232), (14, 17241), (15, 17277),

Gene: LaviMo_25 Start: 17080, Stop: 17379, Start Num: 9

Candidate Starts for LaviMo_25:

(7, 16978), (Start: 9 @17080 has 138 MA's), (10, 17209), (11, 17212), (12, 17275), (13, 17323), (14, 17332), (15, 17368),

Gene: Leafy_25 Start: 17034, Stop: 17333, Start Num: 9

Candidate Starts for Leafy_25:

(7, 16932), (Start: 9 @17034 has 138 MA's), (10, 17163), (11, 17166), (12, 17229), (13, 17277), (14, 17286), (15, 17322),

Gene: LemonPepper_25 Start: 16989, Stop: 17288, Start Num: 9
Candidate Starts for LemonPepper_25:
(Start: 9 @16989 has 138 MA's), (10, 17118), (11, 17121), (12, 17184), (13, 17232), (14, 17241), (15, 17277),

Gene: LionelHutz_25 Start: 17075, Stop: 17374, Start Num: 9
Candidate Starts for LionelHutz_25:
(7, 16973), (Start: 9 @17075 has 138 MA's), (10, 17204), (11, 17207), (12, 17270), (13, 17318), (14, 17327), (15, 17363),

Gene: Livingwater_25 Start: 17077, Stop: 17376, Start Num: 9
Candidate Starts for Livingwater_25:
(7, 16975), (Start: 9 @17077 has 138 MA's), (10, 17206), (11, 17209), (12, 17272), (13, 17320), (14, 17329), (15, 17365),

Gene: Loca_25 Start: 17102, Stop: 17401, Start Num: 9
Candidate Starts for Loca_25:
(7, 17000), (Start: 9 @17102 has 138 MA's), (10, 17231), (11, 17234), (12, 17297), (13, 17345), (14, 17354), (15, 17390),

Gene: Lola20_25 Start: 17015, Stop: 17314, Start Num: 9
Candidate Starts for Lola20_25:
(7, 16913), (Start: 9 @17015 has 138 MA's), (10, 17144), (11, 17147), (12, 17210), (13, 17258), (14, 17267), (15, 17303),

Gene: Lunatic_25 Start: 16542, Stop: 16841, Start Num: 9
Candidate Starts for Lunatic_25:
(7, 16440), (Start: 9 @16542 has 138 MA's), (10, 16671), (11, 16674), (12, 16737), (13, 16785), (14, 16794),

Gene: Luxx_25 Start: 17090, Stop: 17389, Start Num: 9
Candidate Starts for Luxx_25:
(Start: 9 @17090 has 138 MA's), (10, 17219), (11, 17222), (12, 17285), (13, 17333), (14, 17342), (15, 17378),

Gene: Madebyisha_25 Start: 17154, Stop: 17453, Start Num: 9
Candidate Starts for Madebyisha_25:
(7, 17052), (Start: 9 @17154 has 138 MA's), (10, 17283), (11, 17286), (12, 17349), (13, 17397), (14, 17406), (15, 17442),

Gene: Majesty_25 Start: 17071, Stop: 17370, Start Num: 9
Candidate Starts for Majesty_25:
(Start: 9 @17071 has 138 MA's), (10, 17200), (11, 17203), (12, 17266), (13, 17314), (14, 17323), (15, 17359),

Gene: ManAs_25 Start: 16989, Stop: 17288, Start Num: 9
Candidate Starts for ManAs_25:
(Start: 9 @16989 has 138 MA's), (10, 17118), (11, 17121), (12, 17184), (13, 17232), (14, 17241), (15, 17277),

Gene: Maneater_25 Start: 17054, Stop: 17353, Start Num: 9
Candidate Starts for Maneater_25:

(7, 16952), (Start: 9 @17054 has 138 MA's), (10, 17183), (11, 17186), (12, 17249), (13, 17297), (14, 17306), (15, 17342),

Gene: Marichuy_26 Start: 17105, Stop: 17404, Start Num: 9

Candidate Starts for Marichuy_26:

(7, 17003), (Start: 9 @17105 has 138 MA's), (10, 17234), (11, 17237), (12, 17300), (13, 17348), (14, 17357),

Gene: MasterPitts_25 Start: 17012, Stop: 17311, Start Num: 9

Candidate Starts for MasterPitts_25:

(7, 16910), (Start: 9 @17012 has 138 MA's), (10, 17141), (11, 17144), (12, 17207), (13, 17255), (14, 17264),

Gene: Mauilvory_24 Start: 16465, Stop: 16764, Start Num: 9

Candidate Starts for Mauilvory_24:

(7, 16363), (Start: 9 @16465 has 138 MA's), (10, 16594), (11, 16597), (12, 16660), (13, 16708), (14, 16717),

Gene: McShie_25 Start: 17061, Stop: 17360, Start Num: 9

Candidate Starts for McShie_25:

(1, 16587), (2, 16659), (7, 16959), (Start: 9 @17061 has 138 MA's), (10, 17190), (11, 17193), (12, 17256), (13, 17304), (14, 17313), (15, 17349),

Gene: MelBee03_25 Start: 17068, Stop: 17367, Start Num: 9

Candidate Starts for MelBee03_25:

(7, 16966), (Start: 9 @17068 has 138 MA's), (10, 17197), (11, 17200), (12, 17263), (13, 17311), (14, 17320), (15, 17356),

Gene: Miaurora_25 Start: 16659, Stop: 16958, Start Num: 9

Candidate Starts for Miaurora_25:

(7, 16557), (Start: 9 @16659 has 138 MA's), (10, 16788), (11, 16791), (12, 16854), (13, 16902), (14, 16911),

Gene: Minima_25 Start: 16989, Stop: 17288, Start Num: 9

Candidate Starts for Minima_25:

(Start: 9 @16989 has 138 MA's), (10, 17118), (11, 17121), (12, 17184), (13, 17232), (14, 17241), (15, 17277),

Gene: MirimarMandM_25 Start: 17137, Stop: 17436, Start Num: 9

Candidate Starts for MirimarMandM_25:

(7, 17035), (Start: 9 @17137 has 138 MA's), (10, 17266), (11, 17269), (12, 17332), (13, 17380), (14, 17389), (15, 17425),

Gene: MrGreen_25 Start: 17048, Stop: 17347, Start Num: 9

Candidate Starts for MrGreen_25:

(7, 16946), (Start: 9 @17048 has 138 MA's), (10, 17177), (11, 17180), (12, 17243), (13, 17291), (14, 17300), (15, 17336),

Gene: Myram_25 Start: 16989, Stop: 17288, Start Num: 9

Candidate Starts for Myram_25:

(Start: 9 @16989 has 138 MA's), (10, 17118), (11, 17121), (12, 17184), (13, 17232), (14, 17241), (15, 17277),

Gene: Naby_26 Start: 17079, Stop: 17381, Start Num: 9

Candidate Starts for Naby_26:

(4, 16722), (7, 16980), (Start: 9 @17079 has 138 MA's), (10, 17208), (12, 17274), (13, 17322), (14, 17331),

Gene: Namsahir_27 Start: 16803, Stop: 17102, Start Num: 9

Candidate Starts for Namsahir_27:

(7, 16701), (Start: 9 @16803 has 138 MA's), (10, 16932), (11, 16935), (12, 16998), (13, 17046), (14, 17055),

Gene: NeumannU_25 Start: 17072, Stop: 17371, Start Num: 9

Candidate Starts for NeumannU_25:

(Start: 9 @17072 has 138 MA's), (10, 17201), (11, 17204), (12, 17267), (13, 17315), (14, 17324), (15, 17360),

Gene: Niffler_25 Start: 16650, Stop: 16949, Start Num: 9

Candidate Starts for Niffler_25:

(7, 16548), (Start: 9 @16650 has 138 MA's), (10, 16779), (11, 16782), (12, 16845), (13, 16893), (14, 16902),

Gene: Nobel_25 Start: 16676, Stop: 16975, Start Num: 9

Candidate Starts for Nobel_25:

(7, 16574), (Start: 9 @16676 has 138 MA's), (10, 16805), (11, 16808), (12, 16871), (13, 16919), (14, 16928),

Gene: Noelani_25 Start: 16975, Stop: 17274, Start Num: 9

Candidate Starts for Noelani_25:

(6, 16711), (7, 16873), (8, 16897), (Start: 9 @16975 has 138 MA's), (11, 17107), (12, 17170), (13, 17218), (14, 17227), (15, 17263),

Gene: Oaklynn_25 Start: 17012, Stop: 17311, Start Num: 9

Candidate Starts for Oaklynn_25:

(3, 16631), (5, 16640), (7, 16910), (Start: 9 @17012 has 138 MA's), (10, 17141), (11, 17144), (12, 17207), (13, 17255), (14, 17264), (15, 17300),

Gene: Octopus_25 Start: 16995, Stop: 17294, Start Num: 9

Candidate Starts for Octopus_25:

(Start: 9 @16995 has 138 MA's), (10, 17124), (11, 17127), (12, 17190), (13, 17238), (14, 17247), (15, 17283),

Gene: OdetoJoy_28 Start: 17154, Stop: 17453, Start Num: 9

Candidate Starts for OdetoJoy_28:

(7, 17052), (Start: 9 @17154 has 138 MA's), (10, 17283), (11, 17286), (12, 17349), (13, 17397), (14, 17406), (15, 17442),

Gene: Otwor_25 Start: 17081, Stop: 17380, Start Num: 9

Candidate Starts for Otwor_25:

(7, 16979), (Start: 9 @17081 has 138 MA's), (10, 17210), (11, 17213), (12, 17276), (13, 17324), (14, 17333), (15, 17369),

Gene: Owens_25 Start: 17072, Stop: 17371, Start Num: 9

Candidate Starts for Owens_25:

(Start: 9 @17072 has 138 MA's), (10, 17201), (11, 17204), (12, 17267), (13, 17315), (14, 17324), (15, 17360),

Gene: PaoPu_25 Start: 16989, Stop: 17288, Start Num: 9

Candidate Starts for PaoPu_25:

(Start: 9 @16989 has 138 MA's), (10, 17118), (11, 17121), (12, 17184), (13, 17232), (14, 17241), (15, 17277),

Gene: Picconator_26 Start: 17072, Stop: 17371, Start Num: 9

Candidate Starts for Picconator_26:

(Start: 9 @17072 has 138 MA's), (10, 17201), (11, 17204), (12, 17267), (13, 17315), (14, 17324), (15, 17360),

Gene: Picnic_25 Start: 16989, Stop: 17288, Start Num: 9

Candidate Starts for Picnic_25:

(Start: 9 @16989 has 138 MA's), (10, 17118), (11, 17121), (12, 17184), (13, 17232), (14, 17241), (15, 17277),

Gene: PoRanda_25 Start: 17137, Stop: 17436, Start Num: 9

Candidate Starts for PoRanda_25:

(7, 17035), (Start: 9 @17137 has 138 MA's), (10, 17266), (11, 17269), (12, 17332), (13, 17380), (14, 17389), (15, 17425),

Gene: Pondwater_25 Start: 16989, Stop: 17288, Start Num: 9

Candidate Starts for Pondwater_25:

(Start: 9 @16989 has 138 MA's), (10, 17118), (11, 17121), (12, 17184), (13, 17232), (14, 17241), (15, 17277),

Gene: Publix_26 Start: 16803, Stop: 17102, Start Num: 9

Candidate Starts for Publix_26:

(7, 16701), (Start: 9 @16803 has 138 MA's), (10, 16932), (11, 16935), (12, 16998), (13, 17046), (14, 17055),

Gene: Puddles3_26 Start: 16989, Stop: 17288, Start Num: 9

Candidate Starts for Puddles3_26:

(Start: 9 @16989 has 138 MA's), (10, 17118), (11, 17121), (12, 17184), (13, 17232), (14, 17241), (15, 17277),

Gene: PuffyCat_25 Start: 16593, Stop: 16892, Start Num: 9

Candidate Starts for PuffyCat_25:

(7, 16491), (Start: 9 @16593 has 138 MA's), (10, 16722), (11, 16725), (12, 16788), (13, 16836), (14, 16845),

Gene: Quaker_25 Start: 17077, Stop: 17376, Start Num: 9

Candidate Starts for Quaker_25:

(7, 16975), (Start: 9 @17077 has 138 MA's), (10, 17206), (11, 17209), (12, 17272), (13, 17320), (14, 17329), (15, 17365),

Gene: Rhogar_25 Start: 17075, Stop: 17374, Start Num: 9

Candidate Starts for Rhogar_25:

(7, 16973), (Start: 9 @17075 has 138 MA's), (10, 17204), (11, 17207), (12, 17270), (13, 17318), (14, 17327), (15, 17363),

Gene: Rhysand_25 Start: 17080, Stop: 17379, Start Num: 9

Candidate Starts for Rhysand_25:

(7, 16978), (Start: 9 @17080 has 138 MA's), (10, 17209), (11, 17212), (12, 17275), (13, 17323), (14, 17332), (15, 17368),

Gene: Rira_25 Start: 16598, Stop: 16897, Start Num: 9

Candidate Starts for Rira_25:

(7, 16496), (Start: 9 @16598 has 138 MA's), (10, 16727), (11, 16730), (12, 16793), (13, 16841), (14, 16850),

Gene: RoscoWindex_25 Start: 17080, Stop: 17379, Start Num: 9

Candidate Starts for RoscoWindex_25:

(7, 16978), (Start: 9 @17080 has 138 MA's), (10, 17209), (11, 17212), (12, 17275), (13, 17323), (14, 17332), (15, 17368),

Gene: Sachet_26 Start: 16989, Stop: 17288, Start Num: 9

Candidate Starts for Sachet_26:

(Start: 9 @16989 has 138 MA's), (10, 17118), (11, 17121), (12, 17184), (13, 17232), (14, 17241), (15, 17277),

Gene: Sage7_25 Start: 17079, Stop: 17378, Start Num: 9

Candidate Starts for Sage7_25:

(7, 16977), (Start: 9 @17079 has 138 MA's), (10, 17208), (11, 17211), (12, 17274), (13, 17322), (14, 17331), (15, 17367),

Gene: SantasSleigh_25 Start: 17103, Stop: 17402, Start Num: 9

Candidate Starts for SantasSleigh_25:

(7, 17001), (Start: 9 @17103 has 138 MA's), (10, 17232), (11, 17235), (12, 17298), (13, 17346), (14, 17355), (15, 17391),

Gene: Sara_25 Start: 16989, Stop: 17288, Start Num: 9

Candidate Starts for Sara_25:

(Start: 9 @16989 has 138 MA's), (10, 17118), (11, 17121), (12, 17184), (13, 17232), (14, 17241), (15, 17277),

Gene: Scamander_25 Start: 17079, Stop: 17378, Start Num: 9

Candidate Starts for Scamander_25:

(7, 16977), (Start: 9 @17079 has 138 MA's), (10, 17208), (11, 17211), (12, 17274), (13, 17322), (14, 17331), (15, 17367),

Gene: Scrunchy_25 Start: 17072, Stop: 17371, Start Num: 9

Candidate Starts for Scrunchy_25:

(Start: 9 @17072 has 138 MA's), (10, 17201), (11, 17204), (12, 17267), (13, 17315), (14, 17324), (15, 17360),

Gene: SeaWolves_25 Start: 16989, Stop: 17288, Start Num: 9

Candidate Starts for SeaWolves_25:

(Start: 9 @16989 has 138 MA's), (10, 17118), (11, 17121), (12, 17184), (13, 17232), (14, 17241), (15, 17277),

Gene: Sippinontea_25 Start: 17100, Stop: 17399, Start Num: 9

Candidate Starts for Sippinontea_25:

(7, 16998), (Start: 9 @17100 has 138 MA's), (10, 17229), (11, 17232), (12, 17295), (13, 17343), (14, 17352), (15, 17388),

Gene: Slentz_25 Start: 17072, Stop: 17371, Start Num: 9

Candidate Starts for Slentz_25:

(Start: 9 @17072 has 138 MA's), (10, 17201), (11, 17204), (12, 17267), (13, 17315), (14, 17324), (15, 17360),

Gene: Slizam_25 Start: 16598, Stop: 16897, Start Num: 9

Candidate Starts for Slizam_25:

(7, 16496), (Start: 9 @16598 has 138 MA's), (10, 16727), (11, 16730), (12, 16793), (13, 16841), (14, 16850),

Gene: Snuffles_27 Start: 16951, Stop: 17250, Start Num: 9

Candidate Starts for Snuffles_27:

(7, 16849), (Start: 9 @16951 has 138 MA's), (10, 17080), (11, 17083), (12, 17146), (13, 17194), (14, 17203),

Gene: Stem_25 Start: 16608, Stop: 16907, Start Num: 9

Candidate Starts for Stem_25:

(7, 16506), (Start: 9 @16608 has 138 MA's), (10, 16737), (11, 16740), (12, 16803), (13, 16851), (14, 16860),

Gene: TeddyBoy_25 Start: 17076, Stop: 17375, Start Num: 9

Candidate Starts for TeddyBoy_25:

(7, 16974), (Start: 9 @17076 has 138 MA's), (10, 17205), (11, 17208), (12, 17271), (13, 17319), (14, 17328), (15, 17364),

Gene: TimoTea_25 Start: 17054, Stop: 17353, Start Num: 9

Candidate Starts for TimoTea_25:

(7, 16952), (Start: 9 @17054 has 138 MA's), (10, 17183), (11, 17186), (12, 17249), (13, 17297), (14, 17306), (15, 17342),

Gene: TinyTruffula_25 Start: 16677, Stop: 16976, Start Num: 9

Candidate Starts for TinyTruffula_25:

(7, 16575), (Start: 9 @16677 has 138 MA's), (10, 16806), (11, 16809), (12, 16872), (13, 16920), (14, 16929),

Gene: TomBrady12_26 Start: 16780, Stop: 17079, Start Num: 9

Candidate Starts for TomBrady12_26:

(7, 16678), (Start: 9 @16780 has 138 MA's), (10, 16909), (11, 16912), (12, 16975), (13, 17023), (14, 17032),

Gene: Trackstar_25 Start: 16660, Stop: 16959, Start Num: 9

Candidate Starts for Trackstar_25:

(7, 16558), (Start: 9 @16660 has 138 MA's), (10, 16789), (11, 16792), (12, 16855), (13, 16903), (14, 16912),

Gene: Trireme_25 Start: 16657, Stop: 16956, Start Num: 9

Candidate Starts for Trireme_25:

(7, 16555), (Start: 9 @16657 has 138 MA's), (10, 16786), (11, 16789), (12, 16852), (13, 16900), (14, 16909),

Gene: Tyrellus_26 Start: 17072, Stop: 17371, Start Num: 9
Candidate Starts for Tyrellus_26:
(Start: 9 @17072 has 138 MA's), (10, 17201), (11, 17204), (12, 17267), (13, 17315), (14, 17324), (15, 17360),

Gene: Upsilon_25 Start: 17137, Stop: 17436, Start Num: 9
Candidate Starts for Upsilon_25:
(7, 17035), (Start: 9 @17137 has 138 MA's), (10, 17266), (11, 17269), (12, 17332), (13, 17380), (14, 17389), (15, 17425),

Gene: Vanisius_25 Start: 17080, Stop: 17379, Start Num: 9
Candidate Starts for Vanisius_25:
(7, 16978), (Start: 9 @17080 has 138 MA's), (10, 17209), (11, 17212), (12, 17275), (13, 17323), (14, 17332), (15, 17368),

Gene: VitulaEligans_25 Start: 17161, Stop: 17460, Start Num: 9
Candidate Starts for VitulaEligans_25:
(7, 17059), (Start: 9 @17161 has 138 MA's), (10, 17290), (11, 17293), (12, 17356), (13, 17404), (14, 17413), (15, 17449),

Gene: Witch_25 Start: 16990, Stop: 17289, Start Num: 9
Candidate Starts for Witch_25:
(Start: 9 @16990 has 138 MA's), (10, 17119), (11, 17122), (12, 17185), (13, 17233), (14, 17242), (15, 17278),

Gene: Wolfpack_25 Start: 17082, Stop: 17381, Start Num: 9
Candidate Starts for Wolfpack_25:
(7, 16980), (Start: 9 @17082 has 138 MA's), (10, 17211), (11, 17214), (12, 17277), (13, 17325), (14, 17334), (15, 17370),

Gene: Yami_25 Start: 16551, Stop: 16850, Start Num: 9
Candidate Starts for Yami_25:
(7, 16449), (Start: 9 @16551 has 138 MA's), (10, 16680), (11, 16683), (12, 16746), (13, 16794), (14, 16803),

Gene: Yasuo_25 Start: 17060, Stop: 17359, Start Num: 9
Candidate Starts for Yasuo_25:
(7, 16958), (Start: 9 @17060 has 138 MA's), (10, 17189), (11, 17192), (12, 17255), (13, 17303), (14, 17312), (15, 17348),

Gene: YertPhresh_25 Start: 16989, Stop: 17288, Start Num: 9
Candidate Starts for YertPhresh_25:
(Start: 9 @16989 has 138 MA's), (10, 17118), (11, 17121), (12, 17184), (13, 17232), (14, 17241), (15, 17277),

Gene: Yubaba_25 Start: 17023, Stop: 17322, Start Num: 9
Candidate Starts for Yubaba_25:
(Start: 9 @17023 has 138 MA's), (10, 17152), (11, 17155), (12, 17218), (13, 17266), (14, 17275), (15, 17311),

Gene: Zahlia_25 Start: 17108, Stop: 17407, Start Num: 9
Candidate Starts for Zahlia_25:

(7, 17006), (Start: 9 @17108 has 138 MA's), (10, 17237), (11, 17240), (12, 17303), (13, 17351), (14, 17360), (15, 17396),