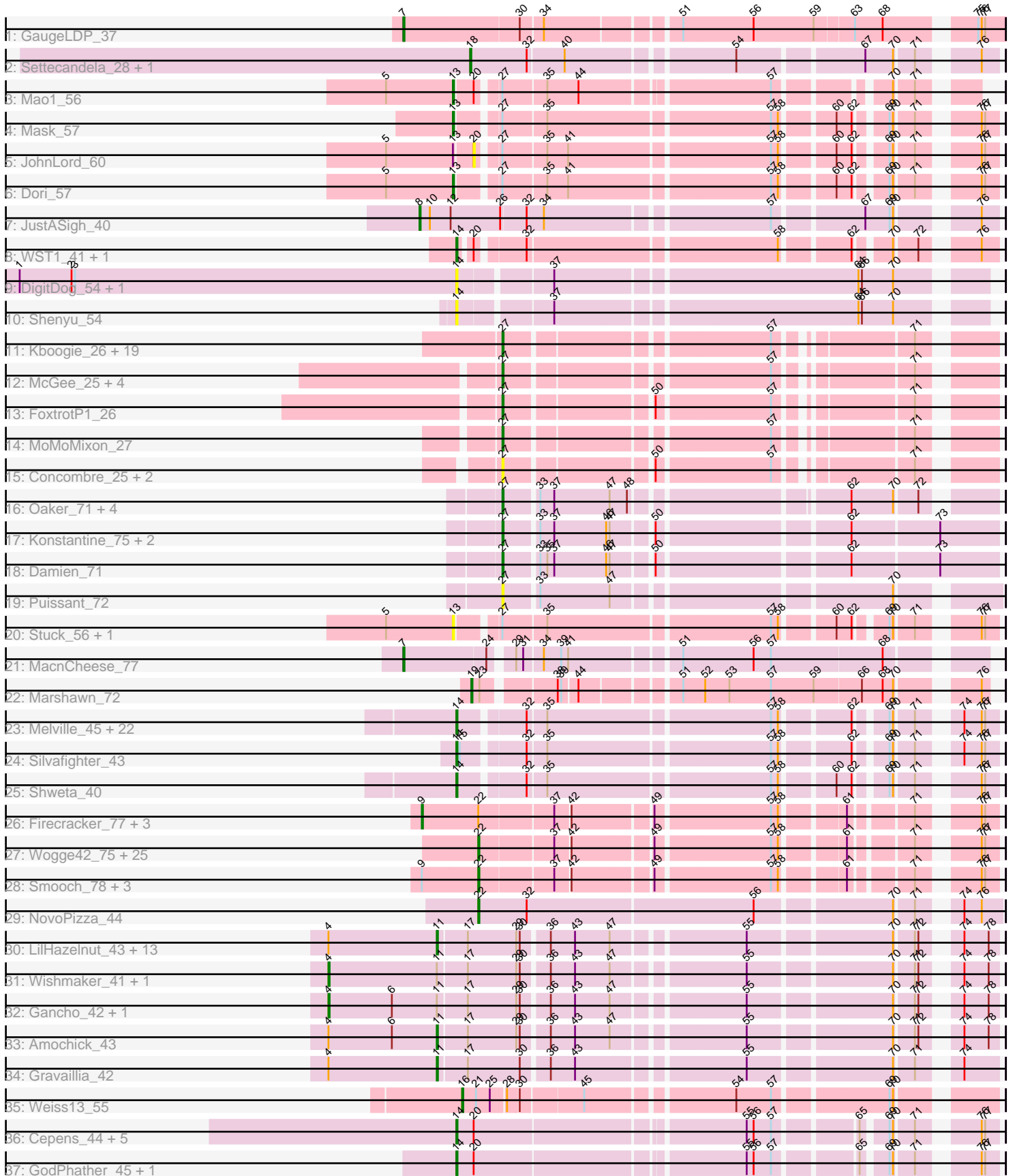


Pham 294507



Note: Tracks are now grouped by subcluster and scaled. Switching in subcluster is indicated by changes in track color. Track scale is now set by default to display the region 30 bp upstream of start 1 to 30 bp downstream of the last possible start. If this default region is judged to be packed too tightly with annotated starts, the track will be further scaled to only show that region of the ORF with annotated starts. This action will be indicated by adding "Zoomed" to the title. For starts, yellow indicates the location of called starts comprised solely of Glimmer/GeneMark auto-annotations, green indicates the location of called starts with at least 1 manual gene annotation.

Pham 294507 Report

This analysis was run 04/18/26 on database version 643.

Pham number 294507 has 146 members, 22 are drafts.

Phages represented in each track:

- Track 1 : GaugeLDP_37
- Track 2 : Settecandela_28, Phrappuccino_28
- Track 3 : Mao1_56
- Track 4 : Mask_57
- Track 5 : JohnLord_60
- Track 6 : Dori_57
- Track 7 : JustASigh_40
- Track 8 : WST1_41, IdentityCrisis_40
- Track 9 : DigitDog_54, Nangang_54
- Track 10 : Shenyu_54
- Track 11 : Kboogie_26, ChickenPhender_25, Babyland_25, DeejaClivia_22, Turret_24, Blackbrain_24, Rabinovish_25, Basquiat_25, Trinitium_25, ChaylaJr_25, Cactojaque_23, Sebata_26, QBert_24, EmmaElysia_24, ErnieJ_27, Fludd_25, Chargie21_25, LinStu_26, Dietrick_21, JPickles_24
- Track 12 : McGee_25, BobaPhatt_23, Belieber_22, Fixie_23, Lethe_25
- Track 13 : FoxtrotP1_26
- Track 14 : MoMoMixon_27
- Track 15 : Concombre_25, JigglyPuff_26, Demodog_24
- Track 16 : Oaker_71, Thumb_72, BobtimousPrime_71, Phreeze_70, Beckerton_70
- Track 17 : Konstantine_75, Megatron06_72, Cborch11_73
- Track 18 : Damien_71
- Track 19 : Puissant_72
- Track 20 : Stuck_56, Bluvara_47
- Track 21 : MacnCheese_77
- Track 22 : Marshawn_72
- Track 23 : Melville_45, Schnauzer_43, Fulbright_41, Jamie19_40, Panchino_39, Parmesanjohn_42, Phloss_40, Magsby_42, Andies_40, Duplicity_42, SpongeBob_40, Scitech_39, Tortoise12_41, Gex_42, Xerxes_42, Pipsqueaks_42, Smurph_42, Snekmaggon_40, Tapioca_44, Tessdabest_43, Phrann_44, Chewbacca_44, Carcharodon_42
- Track 24 : Silvafighter_43
- Track 25 : Shweta_40
- Track 26 : Firecracker_77, Dylan_76, Corndog_78, Ashwin_77
- Track 27 : Wogge42_75, Imara_74, Winget_76, SchoolBus_75, TelAviv_72, Shida_75, Catdawg_75, KingPhillip3_74, Krili_75, Schuy_77, Blessica_76, Ryadel_79, JangDynasty_75, Familton_76, Alkhayr_76, Vagabond_76, YoyoKar_73, Vorrs_76, Mori_76, NiebruSaylor_75, MadKillah_77, Bora_73, Murai_76,

FoulBall_76, Idergollasper_75, Zebo_75

- Track 28 : Smooch_78, Wildflower_76, YungJamal_80, Zakhe101_75
- Track 29 : NovoPizza_44
- Track 30 : LilHazelNut_43, Giles_41, Luna22_41, Luke_43, Hadrien_43, Amymech_43, OBUpride_43, Forge_41, Kinbote_43, Ubuntu_43, Evanesce_42, HH92_42, Dewey_41, Hail_41
- Track 31 : Wishmaker_41, DeepSoil15_43
- Track 32 : Gancho_42, Daegal_45
- Track 33 : Amochick_43
- Track 34 : Gravaillia_42
- Track 35 : Weiss13_55
- Track 36 : Cepens_44, D12_43, PR_44, Taptic_44, Argie_45, Megabear_44
- Track 37 : GodPhather_45, Jeon_44

Summary of Final Annotations (See graph section above for start numbers):

The start number called the most often in the published annotations is 14, it was called in 32 of the 124 non-draft genes in the pham.

Genes that call this "Most Annotated" start:

- Andies_40, Argie_45, Carcharodon_42, Cepens_44, Chewbacca_44, D12_43, DigitDog_54, Duplicity_42, Fulbright_41, Gex_42, GodPhather_45, IdentityCrisis_40, Jamie19_40, Jeon_44, Magsby_42, Megabear_44, Melville_45, Nangang_54, PR_44, Panchino_39, Parmesanjohn_42, Phloss_40, Phrann_44, Pipsqueaks_42, Schnauzer_43, Scitech_39, Shenyu_54, Shweta_40, Silvafighter_43, Smurph_42, Snekmaggon_40, SpongeBob_40, Tapioca_44, Taptic_44, Tessdabest_43, Tortoise12_41, WST1_41, Xerxes_42,

Genes that have the "Most Annotated" start but do not call it:

-

Genes that do not have the "Most Annotated" start:

- Alkhayr_76, Amochick_43, Amymech_43, Ashwin_77, Babyland_25, Basquiat_25, Beckerton_70, Belieber_22, Blackbrain_24, Blessica_76, Bluvana_47, BobaPhatt_23, BobtimousPrime_71, Bora_73, Cactojaque_23, Catdawg_75, Cborch11_73, Chargie21_25, ChaylaJr_25, ChickenPhender_25, Concombre_25, Corndog_78, Daegal_45, Damien_71, DeejaClivia_22, DeepSoil15_43, Demodog_24, Dewey_41, Dietrick_21, Dori_57, Dylan_76, EmmaElysia_24, ErnieJ_27, Evanesce_42, Familton_76, Firecracker_77, Fixie_23, Fludd_25, Forge_41, FoulBall_76, FoxtrotP1_26, Gancho_42, GaugeLDP_37, Giles_41, Gravaillia_42, HH92_42, Hadrien_43, Hail_41, Idergollasper_75, Imara_74, JPickles_24, JangDynasty_75, JigglyPuff_26, JohnLord_60, JustASigh_40, Kboogie_26, Kinbote_43, KingPhillip3_74, Konstantine_75, Krili_75, Lethe_25, LilHazelNut_43, LinStu_26, Luke_43, Luna22_41, MacnCheese_77, MadKillah_77, Mao1_56, Marshawn_72, Mask_57, McGee_25, Megatron06_72, MoMoMixon_27, Mori_76, Murai_76, NiebruSaylor_75, NovoPizza_44, OBUpride_43, Oaker_71, Phrappuccino_28, Phreeze_70, Puissant_72, QBert_24, Rabinovish_25, Ryadel_79, SchoolBus_75, Schuy_77, Sebata_26, Settecandela_28, Shida_75, Smooch_78, Stuck_56, TelAviv_72, Thumb_72, Trinitium_25, Turret_24, Ubuntu_43, Vagabond_76, Vorrrps_76, Weiss13_55, Wildflower_76, Winget_76, Wishmaker_41, Wogge42_75,

YoyoKar_73, YungJamal_80, Zakhe101_75, Zebo_75,

Summary by start number:

Start 4:

- Found in 20 of 146 (13.7%) of genes in pham
- Manual Annotations of this start: 4 of 124
- Called 20.0% of time when present
- Phage (with cluster) where this start called: Daegal_45 (Q), DeepSoil15_43 (Q), Gancho_42 (Q), Wishmaker_41 (Q),

Start 7:

- Found in 2 of 146 (1.4%) of genes in pham
- Manual Annotations of this start: 2 of 124
- Called 100.0% of time when present
- Phage (with cluster) where this start called: GaugeLDP_37 (A2), MacnCheese_77 (K3),

Start 8:

- Found in 1 of 146 (0.7%) of genes in pham
- Manual Annotations of this start: 1 of 124
- Called 100.0% of time when present
- Phage (with cluster) where this start called: JustASigh_40 (AH),

Start 9:

- Found in 8 of 146 (5.5%) of genes in pham
- Manual Annotations of this start: 4 of 124
- Called 50.0% of time when present
- Phage (with cluster) where this start called: Ashwin_77 (O), Corndog_78 (O), Dylan_76 (O), Firecracker_77 (O),

Start 11:

- Found in 20 of 146 (13.7%) of genes in pham
- Manual Annotations of this start: 16 of 124
- Called 80.0% of time when present
- Phage (with cluster) where this start called: Amochick_43 (Q), Amymech_43 (Q), Dewey_41 (Q), Evanesce_42 (Q), Forge_41 (Q), Giles_41 (Q), Gravaillia_42 (Q), HH92_42 (Q), Hadrien_43 (Q), Hail_41 (Q), Kinbote_43 (Q), LilHazelNut_43 (Q), Luke_43 (Q), Luna22_41 (Q), OBUpride_43 (Q), Ubuntu_43 (Q),

Start 13:

- Found in 6 of 146 (4.1%) of genes in pham
- Manual Annotations of this start: 3 of 124
- Called 83.3% of time when present
- Phage (with cluster) where this start called: Bluvara_47 (I3), Dori_57 (AD), Mao1_56 (AD), Mask_57 (AD), Stuck_56 (I2),

Start 14:

- Found in 38 of 146 (26.0%) of genes in pham
- Manual Annotations of this start: 32 of 124
- Called 100.0% of time when present
- Phage (with cluster) where this start called: Andies_40 (N), Argie_45 (W), Carcharodon_42 (N), Cepens_44 (W), Chewbacca_44 (N), D12_43 (W), DigitDog_54

(B5), Duplicity_42 (N), Fulbright_41 (N), Gex_42 (N), GodPhather_45 (W), IdentityCrisis_40 (AJ), Jamie19_40 (N), Jeon_44 (W), Magsby_42 (N), Megabear_44 (W), Melville_45 (N), Nangang_54 (B5), PR_44 (W), Panchino_39 (N), Parmesanjohn_42 (N), Phloss_40 (N), Phrann_44 (N), Pipsqueaks_42 (N), Schnauzer_43 (N), Scitech_39 (N), Shenyu_54 (B5), Shweta_40 (N), Silvafighter_43 (N), Smurph_42 (N), Snekmaggedon_40 (N), SpongeBob_40 (N), Tapioca_44 (N), Taptic_44 (W), Tessdabest_43 (N), Tortoise12_41 (N), WST1_41 (AJ), Xerxes_42 (N),

Start 16:

- Found in 1 of 146 (0.7%) of genes in pham
- Manual Annotations of this start: 1 of 124
- Called 100.0% of time when present
- Phage (with cluster) where this start called: Weiss13_55 (R),

Start 18:

- Found in 2 of 146 (1.4%) of genes in pham
- Manual Annotations of this start: 2 of 124
- Called 100.0% of time when present
- Phage (with cluster) where this start called: Phrappuccino_28 (AA), Settecandela_28 (AA),

Start 19:

- Found in 1 of 146 (0.7%) of genes in pham
- Manual Annotations of this start: 1 of 124
- Called 100.0% of time when present
- Phage (with cluster) where this start called: Marshawn_72 (K6),

Start 20:

- Found in 12 of 146 (8.2%) of genes in pham
- No Manual Annotations of this start.
- Called 8.3% of time when present
- Phage (with cluster) where this start called: JohnLord_60 (AD),

Start 22:

- Found in 35 of 146 (24.0%) of genes in pham
- Manual Annotations of this start: 27 of 124
- Called 88.6% of time when present
- Phage (with cluster) where this start called: Alkhayr_76 (O), Blessica_76 (O), Bora_73 (O), Catdawg_75 (O), Familton_76 (O), FoulBall_76 (O), Idergollasper_75 (O), Imara_74 (O), JangDynasty_75 (O), KingPhillip3_74 (O), Krili_75 (O), MadKillah_77 (O), Mori_76 (O), Murai_76 (O), NiebruSaylor_75 (O), NovoPizza_44 (Q), Ryadel_79 (O), SchoolBus_75 (O), Schuy_77 (O), Shida_75 (O), Smooch_78 (O), TelAviv_72 (O), Vagabond_76 (O), Vorrrps_76 (O), Wildflower_76 (O), Winget_76 (O), Wogge42_75 (O), YoyoKar_73 (O), YungJamal_80 (O), Zakhe101_75 (O), Zebo_75 (O),

Start 27:

- Found in 46 of 146 (31.5%) of genes in pham
- Manual Annotations of this start: 31 of 124
- Called 87.0% of time when present
- Phage (with cluster) where this start called: Babyland_25 (C1), Basquiat_25 (C1), Beckerton_70 (H1), Belieber_22 (C1), Blackbrain_24 (C1), BobaPhatt_23 (C1),

BobtimousPrime_71 (H1), Cactojaque_23 (C1), Cborch11_73 (H1), Chargie21_25 (C1), ChaylaJr_25 (C1), ChickenPhender_25 (C1), Concombre_25 (C1), Damien_71 (H1), DeejaClivia_22 (C1), Demodog_24 (C1), Dietrick_21 (C1), EmmaElysia_24 (C1), ErnieJ_27 (C1), Fixie_23 (C1), Fludd_25 (C1), FoxtrotP1_26 (C1), JPickles_24 (C1), JigglyPuff_26 (C1), Kboogie_26 (C1), Konstantine_75 (H1), Lethe_25 (C1), LinStu_26 (C1), McGee_25 (C1), Megatron06_72 (H1), MoMoMixon_27 (C1), Oaker_71 (H1), Phreeze_70 (H1), Puissant_72 (H1), QBert_24 (C1), Rabinovish_25 (C1), Sebata_26 (C1), Thumb_72 (H1), Trinitium_25 (C1), Turret_24 (C1),

Summary by clusters:

There are 17 clusters represented in this pham: AA, K3, AJ, AD, AH, I3, H1, O, N, Q, B5, R, A2, K6, W, C1, I2,

Info for manual annotations of cluster A2:

- Start number 7 was manually annotated 1 time for cluster A2.

Info for manual annotations of cluster AA:

- Start number 18 was manually annotated 2 times for cluster AA.

Info for manual annotations of cluster AD:

- Start number 13 was manually annotated 3 times for cluster AD.

Info for manual annotations of cluster AH:

- Start number 8 was manually annotated 1 time for cluster AH.

Info for manual annotations of cluster AJ:

- Start number 14 was manually annotated 1 time for cluster AJ.

Info for manual annotations of cluster C1:

- Start number 27 was manually annotated 23 times for cluster C1.

Info for manual annotations of cluster H1:

- Start number 27 was manually annotated 8 times for cluster H1.

Info for manual annotations of cluster K3:

- Start number 7 was manually annotated 1 time for cluster K3.

Info for manual annotations of cluster K6:

- Start number 19 was manually annotated 1 time for cluster K6.

Info for manual annotations of cluster N:

- Start number 14 was manually annotated 23 times for cluster N.

Info for manual annotations of cluster O:

- Start number 9 was manually annotated 4 times for cluster O.
- Start number 22 was manually annotated 26 times for cluster O.

Info for manual annotations of cluster Q:

- Start number 4 was manually annotated 4 times for cluster Q.

- Start number 11 was manually annotated 16 times for cluster Q.
- Start number 22 was manually annotated 1 time for cluster Q.

Info for manual annotations of cluster R:

- Start number 16 was manually annotated 1 time for cluster R.

Info for manual annotations of cluster W:

- Start number 14 was manually annotated 8 times for cluster W.

Gene Information:

Gene: Alkhayr_76 Start: 47301, Stop: 46924, Start Num: 22

Candidate Starts for Alkhayr_76:

(Start: 22 @47301 has 27 MA's), (37, 47241), (42, 47229), (49, 47166), (57, 47073), (58, 47067), (61, 47022), (71, 46977), (76, 46938), (77, 46935),

Gene: Amochick_43 Start: 33322, Stop: 32897, Start Num: 11

Candidate Starts for Amochick_43:

(Start: 4 @33415 has 4 MA's), (6, 33361), (Start: 11 @33322 has 16 MA's), (17, 33298), (29, 33256), (30, 33253), (36, 33232), (43, 33211), (47, 33181), (55, 33079), (70, 32965), (71, 32950), (72, 32947), (74, 32926), (78, 32905),

Gene: Amymech_43 Start: 33316, Stop: 32891, Start Num: 11

Candidate Starts for Amymech_43:

(Start: 4 @33409 has 4 MA's), (Start: 11 @33316 has 16 MA's), (17, 33292), (29, 33250), (30, 33247), (36, 33226), (43, 33205), (47, 33175), (55, 33073), (70, 32959), (71, 32944), (72, 32941), (74, 32920), (78, 32899),

Gene: Andies_40 Start: 29966, Stop: 30364, Start Num: 14

Candidate Starts for Andies_40:

(Start: 14 @29966 has 32 MA's), (32, 30017), (35, 30032), (57, 30215), (58, 30221), (62, 30272), (69, 30293), (70, 30296), (71, 30311), (74, 30335), (76, 30350), (77, 30353),

Gene: Argie_45 Start: 40492, Stop: 40893, Start Num: 14

Candidate Starts for Argie_45:

(Start: 14 @40492 has 32 MA's), (20, 40507), (55, 40723), (56, 40729), (57, 40744), (65, 40804), (69, 40822), (70, 40825), (71, 40840), (76, 40879), (77, 40882),

Gene: Ashwin_77 Start: 48095, Stop: 47670, Start Num: 9

Candidate Starts for Ashwin_77:

(Start: 9 @48095 has 4 MA's), (Start: 22 @48047 has 27 MA's), (37, 47987), (42, 47975), (49, 47912), (57, 47819), (58, 47813), (61, 47768), (71, 47723), (76, 47684), (77, 47681),

Gene: Babyland_25 Start: 7595, Stop: 7951, Start Num: 27

Candidate Starts for Babyland_25:

(Start: 27 @7595 has 31 MA's), (57, 7802), (71, 7898),

Gene: Basquiat_25 Start: 7576, Stop: 7932, Start Num: 27

Candidate Starts for Basquiat_25:

(Start: 27 @7576 has 31 MA's), (57, 7783), (71, 7879),

Gene: Beckerton_70 Start: 52660, Stop: 53028, Start Num: 27

Candidate Starts for Beckerton_70:

(Start: 27 @52660 has 31 MA's), (33, 52687), (37, 52699), (47, 52747), (48, 52762), (62, 52924), (70, 52960), (72, 52978),

Gene: Belieber_22 Start: 7343, Stop: 7699, Start Num: 27

Candidate Starts for Belieber_22:

(Start: 27 @7343 has 31 MA's), (57, 7550), (71, 7646),

Gene: Blackbrain_24 Start: 7392, Stop: 7748, Start Num: 27

Candidate Starts for Blackbrain_24:

(Start: 27 @7392 has 31 MA's), (57, 7599), (71, 7695),

Gene: Blessica_76 Start: 47851, Stop: 47474, Start Num: 22

Candidate Starts for Blessica_76:

(Start: 22 @47851 has 27 MA's), (37, 47791), (42, 47779), (49, 47716), (57, 47623), (58, 47617), (61, 47572), (71, 47527), (76, 47488), (77, 47485),

Gene: Bluvara_47 Start: 35598, Stop: 35996, Start Num: 13

Candidate Starts for Bluvara_47:

(5, 35541), (Start: 13 @35598 has 3 MA's), (Start: 27 @35628 has 31 MA's), (35, 35664), (57, 35847), (58, 35853), (60, 35892), (62, 35904), (69, 35925), (70, 35928), (71, 35943), (76, 35982), (77, 35985),

Gene: BobaPhatt_23 Start: 7587, Stop: 7943, Start Num: 27

Candidate Starts for BobaPhatt_23:

(Start: 27 @7587 has 31 MA's), (57, 7794), (71, 7890),

Gene: BobtimousPrime_71 Start: 52962, Stop: 53330, Start Num: 27

Candidate Starts for BobtimousPrime_71:

(Start: 27 @52962 has 31 MA's), (33, 52989), (37, 53001), (47, 53049), (48, 53064), (62, 53226), (70, 53262), (72, 53280),

Gene: Bora_73 Start: 47232, Stop: 46855, Start Num: 22

Candidate Starts for Bora_73:

(Start: 22 @47232 has 27 MA's), (37, 47172), (42, 47160), (49, 47097), (57, 47004), (58, 46998), (61, 46953), (71, 46908), (76, 46869), (77, 46866),

Gene: Cactojaque_23 Start: 7281, Stop: 7637, Start Num: 27

Candidate Starts for Cactojaque_23:

(Start: 27 @7281 has 31 MA's), (57, 7488), (71, 7584),

Gene: Carcharodon_42 Start: 30650, Stop: 31048, Start Num: 14

Candidate Starts for Carcharodon_42:

(Start: 14 @30650 has 32 MA's), (32, 30701), (35, 30716), (57, 30899), (58, 30905), (62, 30956), (69, 30977), (70, 30980), (71, 30995), (74, 31019), (76, 31034), (77, 31037),

Gene: Catdawg_75 Start: 47587, Stop: 47210, Start Num: 22

Candidate Starts for Catdawg_75:

(Start: 22 @47587 has 27 MA's), (37, 47527), (42, 47515), (49, 47452), (57, 47359), (58, 47353), (61, 47308), (71, 47263), (76, 47224), (77, 47221),

Gene: Cborch11_73 Start: 52182, Stop: 52571, Start Num: 27

Candidate Starts for Cborch11_73:

(Start: 27 @52182 has 31 MA's), (33, 52209), (37, 52221), (46, 52266), (47, 52269), (50, 52299), (62, 52449), (73, 52521),

Gene: Cepens_44 Start: 40207, Stop: 40608, Start Num: 14

Candidate Starts for Cepens_44:

(Start: 14 @40207 has 32 MA's), (20, 40222), (55, 40438), (56, 40444), (57, 40459), (65, 40519), (69, 40537), (70, 40540), (71, 40555), (76, 40594), (77, 40597),

Gene: Chargie21_25 Start: 7576, Stop: 7932, Start Num: 27

Candidate Starts for Chargie21_25:

(Start: 27 @7576 has 31 MA's), (57, 7783), (71, 7879),

Gene: ChaylaJr_25 Start: 7663, Stop: 8019, Start Num: 27

Candidate Starts for ChaylaJr_25:

(Start: 27 @7663 has 31 MA's), (57, 7870), (71, 7966),

Gene: Chewbacca_44 Start: 30650, Stop: 31048, Start Num: 14

Candidate Starts for Chewbacca_44:

(Start: 14 @30650 has 32 MA's), (32, 30701), (35, 30716), (57, 30899), (58, 30905), (62, 30956), (69, 30977), (70, 30980), (71, 30995), (74, 31019), (76, 31034), (77, 31037),

Gene: ChickenPhender_25 Start: 7621, Stop: 7977, Start Num: 27

Candidate Starts for ChickenPhender_25:

(Start: 27 @7621 has 31 MA's), (57, 7828), (71, 7924),

Gene: Concombres_25 Start: 8646, Stop: 9002, Start Num: 27

Candidate Starts for Concombres_25:

(Start: 27 @8646 has 31 MA's), (50, 8760), (57, 8853), (71, 8949),

Gene: Corndog_78 Start: 48615, Stop: 48190, Start Num: 9

Candidate Starts for Corndog_78:

(Start: 9 @48615 has 4 MA's), (Start: 22 @48567 has 27 MA's), (37, 48507), (42, 48495), (49, 48432), (57, 48339), (58, 48333), (61, 48288), (71, 48243), (76, 48204), (77, 48201),

Gene: D12_43 Start: 40755, Stop: 41156, Start Num: 14

Candidate Starts for D12_43:

(Start: 14 @40755 has 32 MA's), (20, 40770), (55, 40986), (56, 40992), (57, 41007), (65, 41067), (69, 41085), (70, 41088), (71, 41103), (76, 41142), (77, 41145),

Gene: Daegal_45 Start: 33993, Stop: 33472, Start Num: 4

Candidate Starts for Daegal_45:

(Start: 4 @33993 has 4 MA's), (6, 33939), (Start: 11 @33900 has 16 MA's), (17, 33873), (29, 33831), (30, 33828), (36, 33807), (43, 33786), (47, 33756), (55, 33654), (70, 33540), (71, 33525), (72, 33522), (74, 33501), (78, 33480),

Gene: Damien_71 Start: 52144, Stop: 52533, Start Num: 27

Candidate Starts for Damien_71:

(Start: 27 @52144 has 31 MA's), (33, 52171), (35, 52177), (37, 52183), (46, 52228), (47, 52231), (50, 52261), (62, 52411), (73, 52483),

Gene: DeejaClivia_22 Start: 7240, Stop: 7596, Start Num: 27

Candidate Starts for DeejaClivia_22:

(Start: 27 @7240 has 31 MA's), (57, 7447), (71, 7543),

Gene: DeepSoil15_43 Start: 33409, Stop: 32891, Start Num: 4

Candidate Starts for DeepSoil15_43:

(Start: 4 @33409 has 4 MA's), (Start: 11 @33316 has 16 MA's), (17, 33292), (29, 33250), (30, 33247), (36, 33226), (43, 33205), (47, 33175), (55, 33073), (70, 32959), (71, 32944), (72, 32941), (74, 32920), (78, 32899),

Gene: Demodog_24 Start: 8646, Stop: 9002, Start Num: 27

Candidate Starts for Demodog_24:

(Start: 27 @8646 has 31 MA's), (50, 8760), (57, 8853), (71, 8949),

Gene: Dewey_41 Start: 33316, Stop: 32891, Start Num: 11

Candidate Starts for Dewey_41:

(Start: 4 @33409 has 4 MA's), (Start: 11 @33316 has 16 MA's), (17, 33292), (29, 33250), (30, 33247), (36, 33226), (43, 33205), (47, 33175), (55, 33073), (70, 32959), (71, 32944), (72, 32941), (74, 32920), (78, 32899),

Gene: Dietrick_21 Start: 7349, Stop: 7705, Start Num: 27

Candidate Starts for Dietrick_21:

(Start: 27 @7349 has 31 MA's), (57, 7556), (71, 7652),

Gene: DigitDog_54 Start: 48511, Stop: 48098, Start Num: 14

Candidate Starts for DigitDog_54:

(1, 48889), (2, 48844), (3, 48841), (Start: 14 @48511 has 32 MA's), (37, 48439), (64, 48193), (66, 48190), (70, 48163),

Gene: Dori_57 Start: 47308, Stop: 47706, Start Num: 13

Candidate Starts for Dori_57:

(5, 47251), (Start: 13 @47308 has 3 MA's), (Start: 27 @47338 has 31 MA's), (35, 47374), (41, 47392), (57, 47557), (58, 47563), (60, 47602), (62, 47614), (69, 47635), (70, 47638), (71, 47653), (76, 47692), (77, 47695),

Gene: Duplicity_42 Start: 30659, Stop: 31057, Start Num: 14

Candidate Starts for Duplicity_42:

(Start: 14 @30659 has 32 MA's), (32, 30710), (35, 30725), (57, 30908), (58, 30914), (62, 30965), (69, 30986), (70, 30989), (71, 31004), (74, 31028), (76, 31043), (77, 31046),

Gene: Dylan_76 Start: 47811, Stop: 47386, Start Num: 9

Candidate Starts for Dylan_76:

(Start: 9 @47811 has 4 MA's), (Start: 22 @47763 has 27 MA's), (37, 47703), (42, 47691), (49, 47628), (57, 47535), (58, 47529), (61, 47484), (71, 47439), (76, 47400), (77, 47397),

Gene: EmmaElysia_24 Start: 7341, Stop: 7697, Start Num: 27

Candidate Starts for EmmaElysia_24:

(Start: 27 @7341 has 31 MA's), (57, 7548), (71, 7644),

Gene: ErnieJ_27 Start: 8522, Stop: 8878, Start Num: 27

Candidate Starts for ErnieJ_27:

(Start: 27 @8522 has 31 MA's), (57, 8729), (71, 8825),

Gene: Evanesce_42 Start: 33316, Stop: 32891, Start Num: 11

Candidate Starts for Evanesce_42:

(Start: 4 @33409 has 4 MA's), (Start: 11 @33316 has 16 MA's), (17, 33292), (29, 33250), (30, 33247), (36, 33226), (43, 33205), (47, 33175), (55, 33073), (70, 32959), (71, 32944), (72, 32941), (74, 32920), (78, 32899),

Gene: Familton_76 Start: 47544, Stop: 47167, Start Num: 22

Candidate Starts for Familton_76:

(Start: 22 @47544 has 27 MA's), (37, 47484), (42, 47472), (49, 47409), (57, 47316), (58, 47310), (61, 47265), (71, 47220), (76, 47181), (77, 47178),

Gene: Firecracker_77 Start: 47969, Stop: 47544, Start Num: 9

Candidate Starts for Firecracker_77:

(Start: 9 @47969 has 4 MA's), (Start: 22 @47921 has 27 MA's), (37, 47861), (42, 47849), (49, 47786), (57, 47693), (58, 47687), (61, 47642), (71, 47597), (76, 47558), (77, 47555),

Gene: Fixie_23 Start: 7324, Stop: 7680, Start Num: 27

Candidate Starts for Fixie_23:

(Start: 27 @7324 has 31 MA's), (57, 7531), (71, 7627),

Gene: Fludd_25 Start: 7577, Stop: 7933, Start Num: 27

Candidate Starts for Fludd_25:

(Start: 27 @7577 has 31 MA's), (57, 7784), (71, 7880),

Gene: Forge_41 Start: 33316, Stop: 32891, Start Num: 11

Candidate Starts for Forge_41:

(Start: 4 @33409 has 4 MA's), (Start: 11 @33316 has 16 MA's), (17, 33292), (29, 33250), (30, 33247), (36, 33226), (43, 33205), (47, 33175), (55, 33073), (70, 32959), (71, 32944), (72, 32941), (74, 32920), (78, 32899),

Gene: FoulBall_76 Start: 47587, Stop: 47210, Start Num: 22

Candidate Starts for FoulBall_76:

(Start: 22 @47587 has 27 MA's), (37, 47527), (42, 47515), (49, 47452), (57, 47359), (58, 47353), (61, 47308), (71, 47263), (76, 47224), (77, 47221),

Gene: FoxtrotP1_26 Start: 9027, Stop: 9383, Start Num: 27

Candidate Starts for FoxtrotP1_26:

(Start: 27 @9027 has 31 MA's), (50, 9141), (57, 9234), (71, 9330),

Gene: Fulbright_41 Start: 29739, Stop: 30137, Start Num: 14

Candidate Starts for Fulbright_41:

(Start: 14 @29739 has 32 MA's), (32, 29790), (35, 29805), (57, 29988), (58, 29994), (62, 30045), (69, 30066), (70, 30069), (71, 30084), (74, 30108), (76, 30123), (77, 30126),

Gene: Gancho_42 Start: 33132, Stop: 32614, Start Num: 4

Candidate Starts for Gancho_42:

(Start: 4 @33132 has 4 MA's), (6, 33078), (Start: 11 @33039 has 16 MA's), (17, 33015), (29, 32973), (30, 32970), (36, 32949), (43, 32928), (47, 32898), (55, 32796), (70, 32682), (71, 32667), (72, 32664), (74, 32643), (78, 32622),

Gene: GaugeLDP_37 Start: 27993, Stop: 28460, Start Num: 7

Candidate Starts for GaugeLDP_37:

(Start: 7 @27993 has 2 MA's), (30, 28089), (34, 28107), (51, 28209), (56, 28269), (59, 28320), (63, 28350), (68, 28374), (75, 28437), (76, 28440), (77, 28443),

Gene: Gex_42 Start: 30666, Stop: 31064, Start Num: 14

Candidate Starts for Gex_42:

(Start: 14 @30666 has 32 MA's), (32, 30717), (35, 30732), (57, 30915), (58, 30921), (62, 30972), (69, 30993), (70, 30996), (71, 31011), (74, 31035), (76, 31050), (77, 31053),

Gene: Giles_41 Start: 33316, Stop: 32891, Start Num: 11

Candidate Starts for Giles_41:

(Start: 4 @33409 has 4 MA's), (Start: 11 @33316 has 16 MA's), (17, 33292), (29, 33250), (30, 33247), (36, 33226), (43, 33205), (47, 33175), (55, 33073), (70, 32959), (71, 32944), (72, 32941), (74, 32920), (78, 32899),

Gene: GodPhather_45 Start: 40971, Stop: 41372, Start Num: 14

Candidate Starts for GodPhather_45:

(Start: 14 @40971 has 32 MA's), (20, 40986), (55, 41202), (56, 41208), (57, 41223), (65, 41283), (69, 41301), (70, 41304), (71, 41319), (76, 41358), (77, 41361),

Gene: Gravaillia_42 Start: 33359, Stop: 32934, Start Num: 11

Candidate Starts for Gravaillia_42:

(Start: 4 @33452 has 4 MA's), (Start: 11 @33359 has 16 MA's), (17, 33335), (30, 33290), (36, 33269), (43, 33248), (55, 33116), (70, 33002), (71, 32987), (74, 32963),

Gene: HH92_42 Start: 33316, Stop: 32891, Start Num: 11

Candidate Starts for HH92_42:

(Start: 4 @33409 has 4 MA's), (Start: 11 @33316 has 16 MA's), (17, 33292), (29, 33250), (30, 33247), (36, 33226), (43, 33205), (47, 33175), (55, 33073), (70, 32959), (71, 32944), (72, 32941), (74, 32920), (78, 32899),

Gene: Hadrien_43 Start: 33316, Stop: 32891, Start Num: 11

Candidate Starts for Hadrien_43:

(Start: 4 @33409 has 4 MA's), (Start: 11 @33316 has 16 MA's), (17, 33292), (29, 33250), (30, 33247), (36, 33226), (43, 33205), (47, 33175), (55, 33073), (70, 32959), (71, 32944), (72, 32941), (74, 32920), (78, 32899),

Gene: Hail_41 Start: 33316, Stop: 32891, Start Num: 11

Candidate Starts for Hail_41:

(Start: 4 @33409 has 4 MA's), (Start: 11 @33316 has 16 MA's), (17, 33292), (29, 33250), (30, 33247), (36, 33226), (43, 33205), (47, 33175), (55, 33073), (70, 32959), (71, 32944), (72, 32941), (74, 32920), (78, 32899),

Gene: IdentityCrisis_40 Start: 28510, Stop: 28902, Start Num: 14

Candidate Starts for IdentityCrisis_40:

(Start: 14 @28510 has 32 MA's), (20, 28519), (32, 28555), (58, 28759), (62, 28810), (70, 28834), (72, 28852), (76, 28888),

Gene: Idergollasper_75 Start: 47538, Stop: 47161, Start Num: 22

Candidate Starts for Idergollasper_75:

(Start: 22 @47538 has 27 MA's), (37, 47478), (42, 47466), (49, 47403), (57, 47310), (58, 47304), (61, 47259), (71, 47214), (76, 47175), (77, 47172),

Gene: Imara_74 Start: 47387, Stop: 47010, Start Num: 22

Candidate Starts for Imara_74:

(Start: 22 @47387 has 27 MA's), (37, 47327), (42, 47315), (49, 47252), (57, 47159), (58, 47153), (61, 47108), (71, 47063), (76, 47024), (77, 47021),

Gene: JPickles_24 Start: 7351, Stop: 7707, Start Num: 27

Candidate Starts for JPickles_24:

(Start: 27 @7351 has 31 MA's), (57, 7558), (71, 7654),

Gene: Jamie19_40 Start: 29847, Stop: 30245, Start Num: 14

Candidate Starts for Jamie19_40:

(Start: 14 @29847 has 32 MA's), (32, 29898), (35, 29913), (57, 30096), (58, 30102), (62, 30153), (69, 30174), (70, 30177), (71, 30192), (74, 30216), (76, 30231), (77, 30234),

Gene: JangDynasty_75 Start: 47605, Stop: 47228, Start Num: 22

Candidate Starts for JangDynasty_75:

(Start: 22 @47605 has 27 MA's), (37, 47545), (42, 47533), (49, 47470), (57, 47377), (58, 47371), (61, 47326), (71, 47281), (76, 47242), (77, 47239),

Gene: Jeon_44 Start: 40713, Stop: 41114, Start Num: 14

Candidate Starts for Jeon_44:

(Start: 14 @40713 has 32 MA's), (20, 40728), (55, 40944), (56, 40950), (57, 40965), (65, 41025), (69, 41043), (70, 41046), (71, 41061), (76, 41100), (77, 41103),

Gene: JigglyPuff_26 Start: 8695, Stop: 9051, Start Num: 27

Candidate Starts for JigglyPuff_26:

(Start: 27 @8695 has 31 MA's), (50, 8809), (57, 8902), (71, 8998),

Gene: JohnLord_60 Start: 46724, Stop: 47107, Start Num: 20

Candidate Starts for JohnLord_60:

(5, 46652), (Start: 13 @46709 has 3 MA's), (20, 46724), (Start: 27 @46739 has 31 MA's), (35, 46775), (41, 46793), (57, 46958), (58, 46964), (60, 47003), (62, 47015), (69, 47036), (70, 47039), (71, 47054), (76, 47093), (77, 47096),

Gene: JustASigh_40 Start: 31548, Stop: 31102, Start Num: 8

Candidate Starts for JustASigh_40:

(Start: 8 @31548 has 1 MA's), (10, 31539), (12, 31521), (26, 31479), (32, 31458), (34, 31443), (57, 31263), (67, 31194), (69, 31173), (70, 31170), (76, 31116),

Gene: Kboogie_26 Start: 7632, Stop: 7988, Start Num: 27

Candidate Starts for Kboogie_26:

(Start: 27 @7632 has 31 MA's), (57, 7839), (71, 7935),

Gene: Kinbote_43 Start: 33316, Stop: 32891, Start Num: 11

Candidate Starts for Kinbote_43:

(Start: 4 @33409 has 4 MA's), (Start: 11 @33316 has 16 MA's), (17, 33292), (29, 33250), (30, 33247), (36, 33226), (43, 33205), (47, 33175), (55, 33073), (70, 32959), (71, 32944), (72, 32941), (74, 32920), (78, 32899),

Gene: KingPhillip3_74 Start: 47553, Stop: 47176, Start Num: 22

Candidate Starts for KingPhillip3_74:

(Start: 22 @47553 has 27 MA's), (37, 47493), (42, 47481), (49, 47418), (57, 47325), (58, 47319), (61, 47274), (71, 47229), (76, 47190), (77, 47187),

Gene: Konstantine_75 Start: 52975, Stop: 53364, Start Num: 27

Candidate Starts for Konstantine_75:

(Start: 27 @52975 has 31 MA's), (33, 53002), (37, 53014), (46, 53059), (47, 53062), (50, 53092), (62, 53242), (73, 53314),

Gene: Krili_75 Start: 47097, Stop: 46720, Start Num: 22

Candidate Starts for Krili_75:

(Start: 22 @47097 has 27 MA's), (37, 47037), (42, 47025), (49, 46962), (57, 46869), (58, 46863), (61, 46818), (71, 46773), (76, 46734), (77, 46731),

Gene: Lethe_25 Start: 8393, Stop: 8749, Start Num: 27

Candidate Starts for Lethe_25:

(Start: 27 @8393 has 31 MA's), (57, 8600), (71, 8696),

Gene: LilHazelnut_43 Start: 33316, Stop: 32891, Start Num: 11

Candidate Starts for LilHazelnut_43:

(Start: 4 @33409 has 4 MA's), (Start: 11 @33316 has 16 MA's), (17, 33292), (29, 33250), (30, 33247), (36, 33226), (43, 33205), (47, 33175), (55, 33073), (70, 32959), (71, 32944), (72, 32941), (74, 32920), (78, 32899),

Gene: LinStu_26 Start: 9052, Stop: 9408, Start Num: 27

Candidate Starts for LinStu_26:

(Start: 27 @9052 has 31 MA's), (57, 9259), (71, 9355),

Gene: Luke_43 Start: 33271, Stop: 32846, Start Num: 11

Candidate Starts for Luke_43:

(Start: 4 @33364 has 4 MA's), (Start: 11 @33271 has 16 MA's), (17, 33247), (29, 33205), (30, 33202), (36, 33181), (43, 33160), (47, 33130), (55, 33028), (70, 32914), (71, 32899), (72, 32896), (74, 32875), (78, 32854),

Gene: Luna22_41 Start: 33316, Stop: 32891, Start Num: 11

Candidate Starts for Luna22_41:

(Start: 4 @33409 has 4 MA's), (Start: 11 @33316 has 16 MA's), (17, 33292), (29, 33250), (30, 33247), (36, 33226), (43, 33205), (47, 33175), (55, 33073), (70, 32959), (71, 32944), (72, 32941), (74, 32920), (78, 32899),

Gene: MacnCheese_77 Start: 50498, Stop: 50944, Start Num: 7

Candidate Starts for MacnCheese_77:

(Start: 7 @50498 has 2 MA's), (24, 50567), (29, 50582), (31, 50588), (34, 50603), (39, 50618), (41, 50624), (51, 50708), (56, 50768), (57, 50783), (68, 50876),

Gene: MadKillah_77 Start: 47366, Stop: 46989, Start Num: 22

Candidate Starts for MadKillah_77:

(Start: 22 @47366 has 27 MA's), (37, 47306), (42, 47294), (49, 47231), (57, 47138), (58, 47132), (61, 47087), (71, 47042), (76, 47003), (77, 47000),

Gene: Magsby_42 Start: 30667, Stop: 31065, Start Num: 14

Candidate Starts for Magsby_42:

(Start: 14 @30667 has 32 MA's), (32, 30718), (35, 30733), (57, 30916), (58, 30922), (62, 30973), (69, 30994), (70, 30997), (71, 31012), (74, 31036), (76, 31051), (77, 31054),

Gene: Mao1_56 Start: 45715, Stop: 46089, Start Num: 13

Candidate Starts for Mao1_56:

(5, 45658), (Start: 13 @45715 has 3 MA's), (20, 45730), (Start: 27 @45745 has 31 MA's), (35, 45781), (44, 45808), (57, 45958), (70, 46036), (71, 46051),

Gene: Marshawn_72 Start: 49975, Stop: 50358, Start Num: 19

Candidate Starts for Marshawn_72:

(Start: 19 @49975 has 1 MA's), (23, 49981), (38, 50035), (39, 50038), (44, 50050), (51, 50122), (52, 50140), (53, 50161), (57, 50197), (59, 50233), (66, 50272), (68, 50290), (70, 50299), (76, 50353),

Gene: Mask_57 Start: 48051, Stop: 48449, Start Num: 13

Candidate Starts for Mask_57:

(Start: 13 @48051 has 3 MA's), (Start: 27 @48081 has 31 MA's), (35, 48117), (57, 48300), (58, 48306), (60, 48345), (62, 48357), (69, 48378), (70, 48381), (71, 48396), (76, 48435), (77, 48438),

Gene: McGee_25 Start: 7341, Stop: 7697, Start Num: 27

Candidate Starts for McGee_25:

(Start: 27 @7341 has 31 MA's), (57, 7548), (71, 7644),

Gene: Megabear_44 Start: 40128, Stop: 40529, Start Num: 14

Candidate Starts for Megabear_44:

(Start: 14 @40128 has 32 MA's), (20, 40143), (55, 40359), (56, 40365), (57, 40380), (65, 40440), (69, 40458), (70, 40461), (71, 40476), (76, 40515), (77, 40518),

Gene: Megatron06_72 Start: 52721, Stop: 53110, Start Num: 27

Candidate Starts for Megatron06_72:

(Start: 27 @52721 has 31 MA's), (33, 52748), (37, 52760), (46, 52805), (47, 52808), (50, 52838), (62, 52988), (73, 53060),

Gene: Melville_45 Start: 30651, Stop: 31049, Start Num: 14

Candidate Starts for Melville_45:

(Start: 14 @30651 has 32 MA's), (32, 30702), (35, 30717), (57, 30900), (58, 30906), (62, 30957), (69, 30978), (70, 30981), (71, 30996), (74, 31020), (76, 31035), (77, 31038),

Gene: MoMoMixon_27 Start: 9016, Stop: 9372, Start Num: 27

Candidate Starts for MoMoMixon_27:

(Start: 27 @9016 has 31 MA's), (57, 9223), (71, 9319),

Gene: Mori_76 Start: 47628, Stop: 47251, Start Num: 22

Candidate Starts for Mori_76:

(Start: 22 @47628 has 27 MA's), (37, 47568), (42, 47556), (49, 47493), (57, 47400), (58, 47394), (61, 47349), (71, 47304), (76, 47265), (77, 47262),

Gene: Murai_76 Start: 47760, Stop: 47383, Start Num: 22

Candidate Starts for Murai_76:

(Start: 22 @47760 has 27 MA's), (37, 47700), (42, 47688), (49, 47625), (57, 47532), (58, 47526), (61, 47481), (71, 47436), (76, 47397), (77, 47394),

Gene: Nangang_54 Start: 48876, Stop: 48463, Start Num: 14

Candidate Starts for Nangang_54:

(1, 49254), (2, 49209), (3, 49206), (Start: 14 @48876 has 32 MA's), (37, 48804), (64, 48558), (66, 48555), (70, 48528),

Gene: NiebruSaylor_75 Start: 47016, Stop: 46639, Start Num: 22

Candidate Starts for NiebruSaylor_75:

(Start: 22 @47016 has 27 MA's), (37, 46956), (42, 46944), (49, 46881), (57, 46788), (58, 46782), (61, 46737), (71, 46692), (76, 46653), (77, 46650),

Gene: NovoPizza_44 Start: 34983, Stop: 34570, Start Num: 22

Candidate Starts for NovoPizza_44:

(Start: 22 @34983 has 27 MA's), (32, 34941), (56, 34749), (70, 34641), (71, 34626), (74, 34602), (76, 34587),

Gene: OBUpride_43 Start: 33310, Stop: 32885, Start Num: 11

Candidate Starts for OBUpride_43:

(Start: 4 @33403 has 4 MA's), (Start: 11 @33310 has 16 MA's), (17, 33286), (29, 33244), (30, 33241), (36, 33220), (43, 33199), (47, 33169), (55, 33067), (70, 32953), (71, 32938), (72, 32935), (74, 32914), (78, 32893),

Gene: Oaker_71 Start: 52771, Stop: 53139, Start Num: 27

Candidate Starts for Oaker_71:

(Start: 27 @52771 has 31 MA's), (33, 52798), (37, 52810), (47, 52858), (48, 52873), (62, 53035), (70, 53071), (72, 53089),

Gene: PR_44 Start: 40732, Stop: 41133, Start Num: 14

Candidate Starts for PR_44:

(Start: 14 @40732 has 32 MA's), (20, 40747), (55, 40963), (56, 40969), (57, 40984), (65, 41044), (69, 41062), (70, 41065), (71, 41080), (76, 41119), (77, 41122),

Gene: Panchino_39 Start: 31193, Stop: 31591, Start Num: 14

Candidate Starts for Panchino_39:

(Start: 14 @31193 has 32 MA's), (32, 31244), (35, 31259), (57, 31442), (58, 31448), (62, 31499), (69, 31520), (70, 31523), (71, 31538), (74, 31562), (76, 31577), (77, 31580),

Gene: Parmesanjohn_42 Start: 30670, Stop: 31068, Start Num: 14

Candidate Starts for Parmesanjohn_42:

(Start: 14 @30670 has 32 MA's), (32, 30721), (35, 30736), (57, 30919), (58, 30925), (62, 30976), (69, 30997), (70, 31000), (71, 31015), (74, 31039), (76, 31054), (77, 31057),

Gene: Phloss_40 Start: 30077, Stop: 30475, Start Num: 14

Candidate Starts for Phloss_40:

(Start: 14 @30077 has 32 MA's), (32, 30128), (35, 30143), (57, 30326), (58, 30332), (62, 30383), (69, 30404), (70, 30407), (71, 30422), (74, 30446), (76, 30461), (77, 30464),

Gene: Phrann_44 Start: 31873, Stop: 32271, Start Num: 14

Candidate Starts for Phrann_44:

(Start: 14 @31873 has 32 MA's), (32, 31924), (35, 31939), (57, 32122), (58, 32128), (62, 32179), (69, 32200), (70, 32203), (71, 32218), (74, 32242), (76, 32257), (77, 32260),

Gene: Phrappuccino_28 Start: 15030, Stop: 15431, Start Num: 18

Candidate Starts for Phrappuccino_28:

(Start: 18 @15030 has 2 MA's), (32, 15078), (40, 15108), (54, 15240), (67, 15339), (70, 15363), (71, 15378), (76, 15417),

Gene: Phreeze_70 Start: 51738, Stop: 52106, Start Num: 27

Candidate Starts for Phreeze_70:

(Start: 27 @51738 has 31 MA's), (33, 51765), (37, 51777), (47, 51825), (48, 51840), (62, 52002), (70, 52038), (72, 52056),

Gene: Pipsqueaks_42 Start: 30647, Stop: 31045, Start Num: 14

Candidate Starts for Pipsqueaks_42:

(Start: 14 @30647 has 32 MA's), (32, 30698), (35, 30713), (57, 30896), (58, 30902), (62, 30953), (69, 30974), (70, 30977), (71, 30992), (74, 31016), (76, 31031), (77, 31034),

Gene: Puissant_72 Start: 51841, Stop: 52215, Start Num: 27

Candidate Starts for Puissant_72:

(Start: 27 @51841 has 31 MA's), (33, 51868), (47, 51928), (70, 52144),

Gene: QBert_24 Start: 8866, Stop: 9222, Start Num: 27

Candidate Starts for QBert_24:

(Start: 27 @8866 has 31 MA's), (57, 9073), (71, 9169),

Gene: Rabinovish_25 Start: 9154, Stop: 9510, Start Num: 27

Candidate Starts for Rabinovish_25:

(Start: 27 @9154 has 31 MA's), (57, 9361), (71, 9457),

Gene: Ryadel_79 Start: 48372, Stop: 47995, Start Num: 22

Candidate Starts for Ryadel_79:

(Start: 22 @48372 has 27 MA's), (37, 48312), (42, 48300), (49, 48237), (57, 48144), (58, 48138), (61, 48093), (71, 48048), (76, 48009), (77, 48006),

Gene: Schnauzer_43 Start: 30670, Stop: 31068, Start Num: 14

Candidate Starts for Schnauzer_43:

(Start: 14 @30670 has 32 MA's), (32, 30721), (35, 30736), (57, 30919), (58, 30925), (62, 30976), (69, 30997), (70, 31000), (71, 31015), (74, 31039), (76, 31054), (77, 31057),

Gene: SchoolBus_75 Start: 47520, Stop: 47143, Start Num: 22

Candidate Starts for SchoolBus_75:

(Start: 22 @47520 has 27 MA's), (37, 47460), (42, 47448), (49, 47385), (57, 47292), (58, 47286), (61, 47241), (71, 47196), (76, 47157), (77, 47154),

Gene: Schuy_77 Start: 47372, Stop: 46995, Start Num: 22

Candidate Starts for Schuy_77:

(Start: 22 @47372 has 27 MA's), (37, 47312), (42, 47300), (49, 47237), (57, 47144), (58, 47138), (61, 47093), (71, 47048), (76, 47009), (77, 47006),

Gene: Scitech_39 Start: 28686, Stop: 29084, Start Num: 14

Candidate Starts for Scitech_39:

(Start: 14 @28686 has 32 MA's), (32, 28737), (35, 28752), (57, 28935), (58, 28941), (62, 28992), (69, 29013), (70, 29016), (71, 29031), (74, 29055), (76, 29070), (77, 29073),

Gene: Sebata_26 Start: 9052, Stop: 9408, Start Num: 27

Candidate Starts for Sebata_26:

(Start: 27 @9052 has 31 MA's), (57, 9259), (71, 9355),

Gene: Settecandela_28 Start: 15030, Stop: 15431, Start Num: 18

Candidate Starts for Settecandela_28:

(Start: 18 @15030 has 2 MA's), (32, 15078), (40, 15108), (54, 15240), (67, 15339), (70, 15363), (71, 15378), (76, 15417),

Gene: Shenyu_54 Start: 48876, Stop: 48463, Start Num: 14

Candidate Starts for Shenyu_54:

(Start: 14 @48876 has 32 MA's), (37, 48804), (64, 48558), (66, 48555), (70, 48528),

Gene: Shida_75 Start: 47211, Stop: 46834, Start Num: 22

Candidate Starts for Shida_75:

(Start: 22 @47211 has 27 MA's), (37, 47151), (42, 47139), (49, 47076), (57, 46983), (58, 46977), (61, 46932), (71, 46887), (76, 46848), (77, 46845),

Gene: Shweta_40 Start: 29977, Stop: 30375, Start Num: 14

Candidate Starts for Shweta_40:

(Start: 14 @29977 has 32 MA's), (32, 30028), (35, 30043), (57, 30226), (58, 30232), (60, 30271), (62, 30283), (69, 30304), (70, 30307), (71, 30322), (76, 30361), (77, 30364),

Gene: Silvafighter_43 Start: 30643, Stop: 31041, Start Num: 14

Candidate Starts for Silvafighter_43:

(Start: 14 @30643 has 32 MA's), (15, 30646), (32, 30694), (35, 30709), (57, 30892), (58, 30898), (62, 30949), (69, 30970), (70, 30973), (71, 30988), (74, 31012), (76, 31027), (77, 31030),

Gene: Smooch_78 Start: 49262, Stop: 48885, Start Num: 22

Candidate Starts for Smooch_78:

(Start: 9 @49310 has 4 MA's), (Start: 22 @49262 has 27 MA's), (37, 49202), (42, 49190), (49, 49127), (57, 49034), (58, 49028), (61, 48983), (71, 48938), (76, 48899), (77, 48896),

Gene: Smurph_42 Start: 30670, Stop: 31068, Start Num: 14

Candidate Starts for Smurph_42:

(Start: 14 @30670 has 32 MA's), (32, 30721), (35, 30736), (57, 30919), (58, 30925), (62, 30976), (69, 30997), (70, 31000), (71, 31015), (74, 31039), (76, 31054), (77, 31057),

Gene: Snekmaggedon_40 Start: 29847, Stop: 30245, Start Num: 14

Candidate Starts for Snekmaggedon_40:

(Start: 14 @29847 has 32 MA's), (32, 29898), (35, 29913), (57, 30096), (58, 30102), (62, 30153), (69, 30174), (70, 30177), (71, 30192), (74, 30216), (76, 30231), (77, 30234),

Gene: SpongeBob_40 Start: 29847, Stop: 30245, Start Num: 14

Candidate Starts for SpongeBob_40:

(Start: 14 @29847 has 32 MA's), (32, 29898), (35, 29913), (57, 30096), (58, 30102), (62, 30153), (69, 30174), (70, 30177), (71, 30192), (74, 30216), (76, 30231), (77, 30234),

Gene: Stuck_56 Start: 40451, Stop: 40849, Start Num: 13

Candidate Starts for Stuck_56:

(5, 40394), (Start: 13 @40451 has 3 MA's), (Start: 27 @40481 has 31 MA's), (35, 40517), (57, 40700), (58, 40706), (60, 40745), (62, 40757), (69, 40778), (70, 40781), (71, 40796), (76, 40835), (77, 40838),

Gene: Tapioca_44 Start: 30636, Stop: 31034, Start Num: 14

Candidate Starts for Tapioca_44:

(Start: 14 @30636 has 32 MA's), (32, 30687), (35, 30702), (57, 30885), (58, 30891), (62, 30942), (69, 30963), (70, 30966), (71, 30981), (74, 31005), (76, 31020), (77, 31023),

Gene: Taptic_44 Start: 40128, Stop: 40529, Start Num: 14

Candidate Starts for Taptic_44:

(Start: 14 @40128 has 32 MA's), (20, 40143), (55, 40359), (56, 40365), (57, 40380), (65, 40440), (69, 40458), (70, 40461), (71, 40476), (76, 40515), (77, 40518),

Gene: TelAviv_72 Start: 47505, Stop: 47128, Start Num: 22

Candidate Starts for TelAviv_72:

(Start: 22 @47505 has 27 MA's), (37, 47445), (42, 47433), (49, 47370), (57, 47277), (58, 47271), (61, 47226), (71, 47181), (76, 47142), (77, 47139),

Gene: Tessdabest_43 Start: 30667, Stop: 31065, Start Num: 14

Candidate Starts for Tessdabest_43:

(Start: 14 @30667 has 32 MA's), (32, 30718), (35, 30733), (57, 30916), (58, 30922), (62, 30973), (69, 30994), (70, 30997), (71, 31012), (74, 31036), (76, 31051), (77, 31054),

Gene: Thumb_72 Start: 52173, Stop: 52541, Start Num: 27

Candidate Starts for Thumb_72:

(Start: 27 @52173 has 31 MA's), (33, 52200), (37, 52212), (47, 52260), (48, 52275), (62, 52437), (70, 52473), (72, 52491),

Gene: Tortoise12_41 Start: 29353, Stop: 29751, Start Num: 14

Candidate Starts for Tortoise12_41:

(Start: 14 @29353 has 32 MA's), (32, 29404), (35, 29419), (57, 29602), (58, 29608), (62, 29659), (69, 29680), (70, 29683), (71, 29698), (74, 29722), (76, 29737), (77, 29740),

Gene: Trinitium_25 Start: 7591, Stop: 7947, Start Num: 27

Candidate Starts for Trinitium_25:

(Start: 27 @7591 has 31 MA's), (57, 7798), (71, 7894),

Gene: Turret_24 Start: 7330, Stop: 7686, Start Num: 27

Candidate Starts for Turret_24:

(Start: 27 @7330 has 31 MA's), (57, 7537), (71, 7633),

Gene: Ubuntu_43 Start: 33316, Stop: 32891, Start Num: 11

Candidate Starts for Ubuntu_43:

(Start: 4 @33409 has 4 MA's), (Start: 11 @33316 has 16 MA's), (17, 33292), (29, 33250), (30, 33247), (36, 33226), (43, 33205), (47, 33175), (55, 33073), (70, 32959), (71, 32944), (72, 32941), (74, 32920), (78, 32899),

Gene: Vagabond_76 Start: 47417, Stop: 47040, Start Num: 22

Candidate Starts for Vagabond_76:

(Start: 22 @47417 has 27 MA's), (37, 47357), (42, 47345), (49, 47282), (57, 47189), (58, 47183), (61, 47138), (71, 47093), (76, 47054), (77, 47051),

Gene: Vorrrps_76 Start: 47629, Stop: 47252, Start Num: 22

Candidate Starts for Vorrrps_76:

(Start: 22 @47629 has 27 MA's), (37, 47569), (42, 47557), (49, 47494), (57, 47401), (58, 47395), (61, 47350), (71, 47305), (76, 47266), (77, 47263),

Gene: WST1_41 Start: 28367, Stop: 28759, Start Num: 14

Candidate Starts for WST1_41:

(Start: 14 @28367 has 32 MA's), (20, 28376), (32, 28412), (58, 28616), (62, 28667), (70, 28691), (72, 28709), (76, 28745),

Gene: Weiss13_55 Start: 42405, Stop: 42806, Start Num: 16

Candidate Starts for Weiss13_55:

(Start: 16 @42405 has 1 MA's), (21, 42417), (25, 42429), (28, 42441), (30, 42450), (45, 42501), (54, 42615), (57, 42645), (69, 42735), (70, 42738),

Gene: Wildflower_76 Start: 47353, Stop: 46976, Start Num: 22

Candidate Starts for Wildflower_76:

(Start: 9 @47401 has 4 MA's), (Start: 22 @47353 has 27 MA's), (37, 47293), (42, 47281), (49, 47218), (57, 47125), (58, 47119), (61, 47074), (71, 47029), (76, 46990), (77, 46987),

Gene: Winget_76 Start: 47798, Stop: 47421, Start Num: 22

Candidate Starts for Winget_76:

(Start: 22 @47798 has 27 MA's), (37, 47738), (42, 47726), (49, 47663), (57, 47570), (58, 47564), (61, 47519), (71, 47474), (76, 47435), (77, 47432),

Gene: Wishmaker_41 Start: 33409, Stop: 32891, Start Num: 4

Candidate Starts for Wishmaker_41:

(Start: 4 @33409 has 4 MA's), (Start: 11 @33316 has 16 MA's), (17, 33292), (29, 33250), (30, 33247), (36, 33226), (43, 33205), (47, 33175), (55, 33073), (70, 32959), (71, 32944), (72, 32941), (74, 32920), (78, 32899),

Gene: Wogge42_75 Start: 47288, Stop: 46911, Start Num: 22

Candidate Starts for Wogge42_75:

(Start: 22 @47288 has 27 MA's), (37, 47228), (42, 47216), (49, 47153), (57, 47060), (58, 47054), (61, 47009), (71, 46964), (76, 46925), (77, 46922),

Gene: Xerxes_42 Start: 30667, Stop: 31065, Start Num: 14

Candidate Starts for Xerxes_42:

(Start: 14 @30667 has 32 MA's), (32, 30718), (35, 30733), (57, 30916), (58, 30922), (62, 30973), (69, 30994), (70, 30997), (71, 31012), (74, 31036), (76, 31051), (77, 31054),

Gene: YoyoKar_73 Start: 47082, Stop: 46705, Start Num: 22

Candidate Starts for YoyoKar_73:

(Start: 22 @47082 has 27 MA's), (37, 47022), (42, 47010), (49, 46947), (57, 46854), (58, 46848), (61, 46803), (71, 46758), (76, 46719), (77, 46716),

Gene: YungJamal_80 Start: 48976, Stop: 48599, Start Num: 22

Candidate Starts for YungJamal_80:

(Start: 9 @49024 has 4 MA's), (Start: 22 @48976 has 27 MA's), (37, 48916), (42, 48904), (49, 48841), (57, 48748), (58, 48742), (61, 48697), (71, 48652), (76, 48613), (77, 48610),

Gene: Zakhe101_75 Start: 47767, Stop: 47390, Start Num: 22

Candidate Starts for Zakhe101_75:

(Start: 9 @47815 has 4 MA's), (Start: 22 @47767 has 27 MA's), (37, 47707), (42, 47695), (49, 47632), (57, 47539), (58, 47533), (61, 47488), (71, 47443), (76, 47404), (77, 47401),

Gene: Zebo_75 Start: 47529, Stop: 47152, Start Num: 22

Candidate Starts for Zebo_75:

(Start: 22 @47529 has 27 MA's), (37, 47469), (42, 47457), (49, 47394), (57, 47301), (58, 47295), (61, 47250), (71, 47205), (76, 47166), (77, 47163),