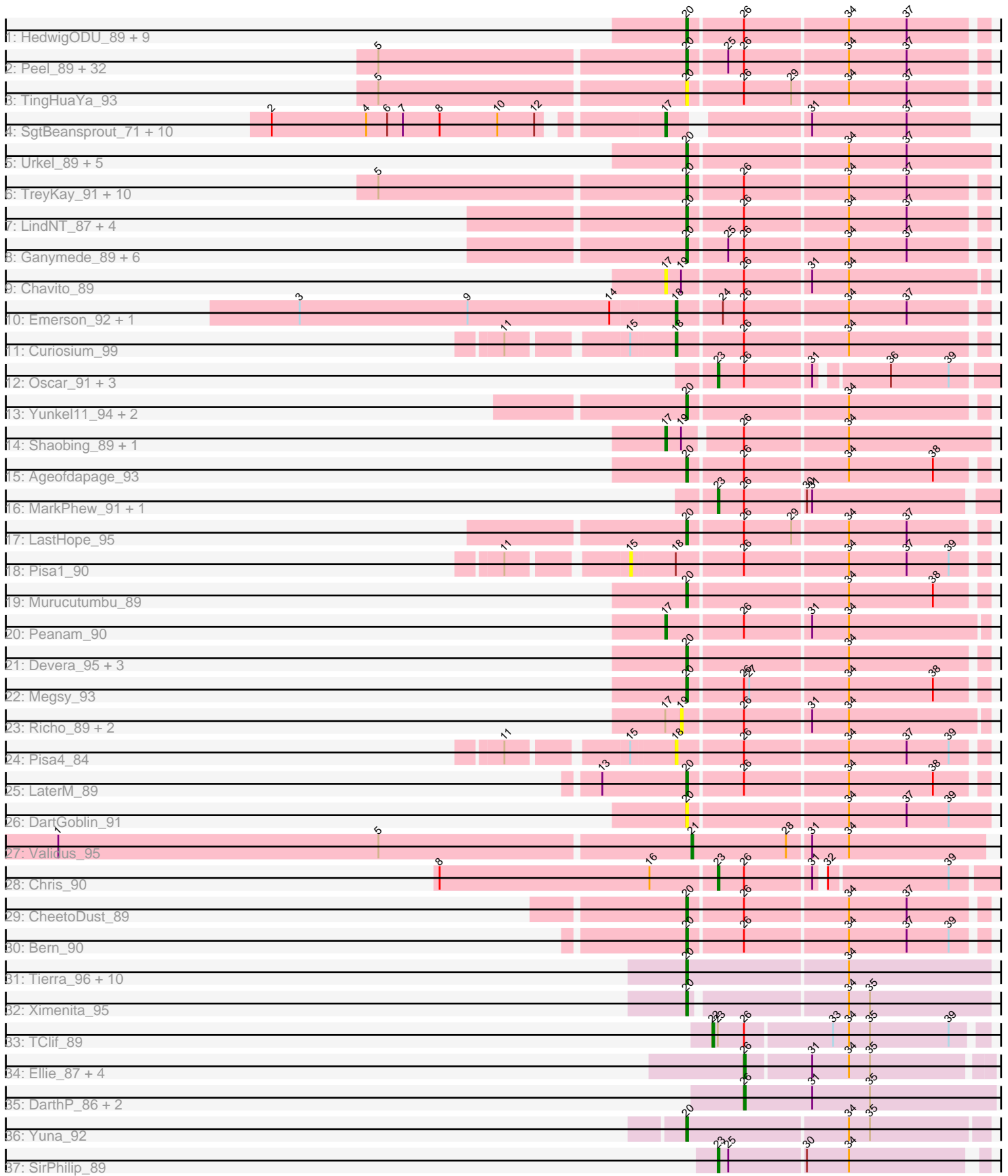


Pham 294515



Note: Tracks are now grouped by subcluster and scaled. Switching in subcluster is indicated by changes in track color. Track scale is now set by default to display the region 30 bp upstream of start 1 to 30 bp downstream of the last possible start. If this default region is judged to be packed too tightly with annotated starts, the track will be further scaled to only show that region of the ORF with annotated starts. This action will be indicated by adding "Zoomed" to the title. For starts, yellow indicates the location of called starts comprised solely of Glimmer/GeneMark auto-annotations, green indicates the location of called starts with at least 1 manual gene annotation.

Pham 294515 Report

This analysis was run 04/18/26 on database version 643.

Pham number 294515 has 142 members, 14 are drafts.

Phages represented in each track:

- Track 1 : HedwigODU_89, Adephagia_88, Clipper_93, TaiwanKao_90, JAWS_88, MacKat_85, ActinUp_90, BGlluviae_88, Zabiza_85, Veliki_90
- Track 2 : Peel_89, Pokerus_89, BEEEST_89, ShiaSurprise_90, Homura_88, CallaLilly_89, Lunahalos_89, Spock_89, Capricorn_89, MeaningOfLife_91, Tachez_89, Twitch_89, CaseJules_91, Durfee_89, Rosmarinus_89, Topper_89, Dalmuri_89, Hyperbowlee_88, Jarvi_89, Piatt_88, Jeckyll_89, Llorens_89, Padfoot_89, CREW_88, BaghaKamala_88, Boiiii_89, Asayake_89, Joy99_90, Mynx_90, Inky_89, Atiba_90, Blizzard_89, Belladonna_89
- Track 3 : TingHuaYa_93
- Track 4 : SgtBeansprout_71, Torres_73, Nikao_73, Nutello_70, Teejan_72, Trice_70, LilPharaoh_71, Enkosi_72, Mdavu_71, Binglebops_70, Amelie_70
- Track 5 : Urkel_89, SamuelLPlaqson_89, DrHayes_89, Bella96_90, Anma_89, TiniBug_88
- Track 6 : TreyKay_91, Anaya_92, CrimD_89, Jayhawk_91, Rapunzel97_91, AlishaPH_82, TruffulaTree_91, BarrelRoll_89, Prithvi_91, Slimphazie_91, Adonis_89
- Track 7 : LindNT_87, Deby_89, Angelica_86, Sulley_86, Tiri_89
- Track 8 : Ganymede_89, Beezoo_92, QuincyRose_87, Ramen_90, Apocalypse_91, YoureAdopted_88, Zavala_91
- Track 9 : Chavito_89
- Track 10 : Emerson_92, Padpat_93
- Track 11 : Curiosium_99
- Track 12 : Oscar_91, KiSi_91, LeMond_90, Scarlett_90
- Track 13 : Yunkel11_94, Guanica15_95, Efra2_96
- Track 14 : Shaobing_89, Niklas_90
- Track 15 : Ageofdapage_93
- Track 16 : MarkPhew_91, Nibb_91
- Track 17 : LastHope_95
- Track 18 : Pisa1_90
- Track 19 : Murucutumbu_89
- Track 20 : Peanam_90
- Track 21 : Devera_95, Stinson_90, Illumine_93, Dole_92
- Track 22 : Megsy_93
- Track 23 : Richo_89, McMater_89, Dartin_89
- Track 24 : Pisa4_84
- Track 25 : LaterM_89
- Track 26 : DartGoblin_91
- Track 27 : Validus_95

- Track 28 : Chris_90
- Track 29 : CheetoDust_89
- Track 30 : Bern_90
- Track 31 : Tierra_96, PhelpsODU_86, Cain_96, Bryler_88, Shadow1_93, Unicorn_96, Sunflower1121_93, Phrank_96, Tigress9_94, Syra333_92, Krueger_93
- Track 32 : Ximenita_95
- Track 33 : TClif_89
- Track 34 : Ellie_87, Amgine_88, Lavahound_88, Fefferhead_89, Applecrisp_86
- Track 35 : DarthP_86, Hammy_86, Amohnition_86
- Track 36 : Yuna_92
- Track 37 : SirPhilip_89

Summary of Final Annotations (See graph section above for start numbers):

The start number called the most often in the published annotations is 20, it was called in 96 of the 128 non-draft genes in the pham.

Genes that call this "Most Annotated" start:

- ActinUp_90, Adephegia_88, Adonis_89, Ageofdapage_93, AlishaPH_82, Anaya_92, Angelica_86, Anma_89, Apocalypse_91, Asayake_89, Atiba_90, BEEST_89, BGlluviae_88, BaghaKamala_88, BarrelRoll_89, Beezoo_92, Bella96_90, Belladonna_89, Bern_90, Blizzard_89, Boiiii_89, Bryler_88, CREW_88, Cain_96, CallaLilly_89, Capricorn_89, CaseJules_91, CheetoDust_89, Clipper_93, CrimD_89, Dalmuri_89, DartGoblin_91, Deby_89, Devera_95, Dole_92, DrHayes_89, Durfee_89, Efra2_96, Ganymede_89, Guanica15_95, HedwigODU_89, Homura_88, Hyperbowlee_88, Illumine_93, Inky_89, JAWS_88, Jarvi_89, Jayhawk_91, Jeckyll_89, Joy99_90, Krueger_93, LastHope_95, LaterM_89, LindNT_87, Llorens_89, Lunahalos_89, MacKat_85, MeaningOfLife_91, Megsy_93, Murucutumbu_89, Mynx_90, Padfoot_89, Peel_89, PhelpsODU_86, Phrank_96, Piatt_88, Pokerus_89, Prithvi_91, QuincyRose_87, Ramen_90, Rapunzel97_91, Rosmarinus_89, SamuelLPlaqson_89, Shadow1_93, ShiaSurprise_90, Slimphazie_91, Spock_89, Stinson_90, Sulley_86, Sunflower1121_93, Syra333_92, Tachez_89, TaiwanKao_90, Tierra_96, Tigress9_94, TingHuaYa_93, TiniBug_88, Tiri_89, Topper_89, TreyKay_91, TruffulaTree_91, Twitch_89, Unicorn_96, Urkel_89, Veliki_90, Ximenita_95, YoureAdopted_88, Yuna_92, Yunkel11_94, Zabiza_85, Zavala_91,

Genes that have the "Most Annotated" start but do not call it:

-

Genes that do not have the "Most Annotated" start:

- Amelie_70, Amgine_88, Amohnition_86, Applecrisp_86, Biglebops_70, Chavito_89, Chris_90, Curiosium_99, DarthP_86, Dartin_89, Ellie_87, Emerson_92, Enkosi_72, Fefferhead_89, Hammy_86, KiSi_91, Lavahound_88, LeMond_90, LilPharaoh_71, MarkPhew_91, McMater_89, Mdavu_71, Nibb_91, Nikao_73, Niklas_90, Nutello_70, Oscar_91, Padpat_93, Peanam_90, Pisa1_90, Pisa4_84, Richo_89, Scarlett_90, SgtBeansprout_71, Shaobing_89, SirPhilip_89, TClif_89, Teejan_72, Torres_73, Trice_70, Validus_95,

Summary by start number:

Start 15:

- Found in 3 of 142 (2.1%) of genes in pham
- No Manual Annotations of this start.
- Called 33.3% of time when present
- Phage (with cluster) where this start called: Pisa1_90 (K1),

Start 17:

- Found in 18 of 142 (12.7%) of genes in pham
- Manual Annotations of this start: 12 of 128
- Called 83.3% of time when present
- Phage (with cluster) where this start called: Amelie_70 (K1), Binglebops_70 (K1), Chavito_89 (K1), Enkosi_72 (K1), LilPharaoh_71 (K1), Mdavu_71 (K1), Nikao_73 (K1), Niklas_90 (K1), Nutello_70 (K1), Peanam_90 (K1), SgtBeansprout_71 (K1), Shaobing_89 (K1), Teejan_72 (K1), Torres_73 (K1), Trice_70 (K1),

Start 18:

- Found in 5 of 142 (3.5%) of genes in pham
- Manual Annotations of this start: 3 of 128
- Called 80.0% of time when present
- Phage (with cluster) where this start called: Curiosium_99 (K1), Emerson_92 (K1), Padpat_93 (K1), Pisa4_84 (K1),

Start 19:

- Found in 6 of 142 (4.2%) of genes in pham
- No Manual Annotations of this start.
- Called 50.0% of time when present
- Phage (with cluster) where this start called: Dartin_89 (K1), McMater_89 (K1), Richo_89 (K1),

Start 20:

- Found in 101 of 142 (71.1%) of genes in pham
- Manual Annotations of this start: 96 of 128
- Called 100.0% of time when present
- Phage (with cluster) where this start called: ActinUp_90 (K1), Adephagia_88 (K1), Adonis_89 (K1), Ageofdapage_93 (K1), AlishaPH_82 (K1), Anaya_92 (K1), Angelica_86 (K1), Anma_89 (K1), Apocalypse_91 (K1), Asayake_89 (K1), Atiba_90 (K1), BEEST_89 (K1), BGlluviae_88 (K1), BaghaKamala_88 (K1), BarrelRoll_89 (K1), Beezoo_92 (K1), Bella96_90 (K1), Belladonna_89 (K1), Bern_90 (K1), Blizzard_89 (K1), Boiiii_89 (K1), Bryler_88 (K6), CREW_88 (K1), Cain_96 (K6), CallaLilly_89 (K1), Capricorn_89 (K1), CaseJules_91 (K1), CheetoDust_89 (K1), Clipper_93 (K1), CrimD_89 (K1), Dalmuri_89 (K1), DartGoblin_91 (K1), Deby_89 (K1), Devera_95 (K1), Dole_92 (K1), DrHayes_89 (K1), Durfee_89 (K1), Efra2_96 (K1), Ganymede_89 (K1), Guanica15_95 (K1), HedwigODU_89 (K1), Homura_88 (K1), Hyperbowlee_88 (K1), Illumine_93 (K1), Inky_89 (K1), JAWS_88 (K1), Jarvi_89 (K1), Jayhawk_91 (K1), Jeckyll_89 (K1), Joy99_90 (K1), Krueger_93 (K6), LastHope_95 (K1), LaterM_89 (K1), LindNT_87 (K1), Llorens_89 (K1), Lunahalos_89 (K1), MacKat_85 (K1), MeaningOfLife_91 (K1), Megsy_93 (K1), Murucutumbu_89 (K1), Mynx_90 (K1), Padfoot_89 (K1), Peel_89 (K1), PhelpsODU_86 (K6), Phrank_96 (K6), Piatt_88 (K1), Pokerus_89 (K1), Prithvi_91 (K1), QuincyRose_87 (K1), Ramen_90 (K1), Rapunzel97_91 (K1), Rosmarinus_89 (K1), SamuelLPlaqson_89 (K1), Shadow1_93 (K6), ShiaSurprise_90 (K1), Slimphazie_91 (K1), Spock_89 (K1), Stinson_90 (K1), Sulley_86 (K1), Sunflower1121_93 (K6), Syra333_92 (K6), Tachez_89 (K1),

TaiwanKao_90 (K1), Tierra_96 (K6), Tigress9_94 (K6), TingHuaYa_93 (K1), TiniBug_88 (K1), Tiri_89 (K1), Topper_89 (K1), TreyKay_91 (K1), TruffulaTree_91 (K1), Twitch_89 (K1), Unicorn_96 (K6), Urkel_89 (K1), Veliki_90 (K1), Ximenita_95 (K6), YoureAdopted_88 (K1), Yuna_92 (K6), Yunkel11_94 (K1), Zabiza_85 (K1), Zavala_91 (K1),

Start 21:

- Found in 1 of 142 (0.7%) of genes in pham
- Manual Annotations of this start: 1 of 128
- Called 100.0% of time when present
- Phage (with cluster) where this start called: Validus_95 (K1),

Start 22:

- Found in 1 of 142 (0.7%) of genes in pham
- Manual Annotations of this start: 1 of 128
- Called 100.0% of time when present
- Phage (with cluster) where this start called: TClif_89 (K6),

Start 23:

- Found in 9 of 142 (6.3%) of genes in pham
- Manual Annotations of this start: 8 of 128
- Called 88.9% of time when present
- Phage (with cluster) where this start called: Chris_90 (K1), KiSi_91 (K1), LeMond_90 (K1), MarkPheW_91 (K1), Nibb_91 (K1), Oscar_91 (K1), Scarlett_90 (K1), SirPhilip_89 (K6),

Start 26:

- Found in 101 of 142 (71.1%) of genes in pham
- Manual Annotations of this start: 7 of 128
- Called 7.9% of time when present
- Phage (with cluster) where this start called: Amgine_88 (K6), Amohntion_86 (K6), Applecrisp_86 (K6), DarthP_86 (K6), Ellie_87 (K6), Fefferhead_89 (K6), Hammy_86 (K6), Lavahound_88 (K6),

Summary by clusters:

There are 2 clusters represented in this pham: K1, K6,

Info for manual annotations of cluster K1:

- Start number 17 was manually annotated 12 times for cluster K1.
- Start number 18 was manually annotated 3 times for cluster K1.
- Start number 20 was manually annotated 84 times for cluster K1.
- Start number 21 was manually annotated 1 time for cluster K1.
- Start number 23 was manually annotated 7 times for cluster K1.

Info for manual annotations of cluster K6:

- Start number 20 was manually annotated 12 times for cluster K6.
- Start number 22 was manually annotated 1 time for cluster K6.
- Start number 23 was manually annotated 1 time for cluster K6.
- Start number 26 was manually annotated 7 times for cluster K6.

Gene Information:

Gene: ActinUp_90 Start: 56657, Stop: 56818, Start Num: 20

Candidate Starts for ActinUp_90:

(Start: 20 @56657 has 96 MA's), (Start: 26 @56687 has 7 MA's), (34, 56744), (37, 56777),

Gene: Adephagia_88 Start: 56500, Stop: 56661, Start Num: 20

Candidate Starts for Adephagia_88:

(Start: 20 @56500 has 96 MA's), (Start: 26 @56530 has 7 MA's), (34, 56587), (37, 56620),

Gene: Adonis_89 Start: 56698, Stop: 56859, Start Num: 20

Candidate Starts for Adonis_89:

(5, 56527), (Start: 20 @56698 has 96 MA's), (Start: 26 @56728 has 7 MA's), (34, 56785), (37, 56818),

Gene: Ageofdapage_93 Start: 57508, Stop: 57669, Start Num: 20

Candidate Starts for Ageofdapage_93:

(Start: 20 @57508 has 96 MA's), (Start: 26 @57538 has 7 MA's), (34, 57595), (38, 57643),

Gene: AlishaPH_82 Start: 53889, Stop: 54050, Start Num: 20

Candidate Starts for AlishaPH_82:

(5, 53718), (Start: 20 @53889 has 96 MA's), (Start: 26 @53919 has 7 MA's), (34, 53976), (37, 54009),

Gene: Amelie_70 Start: 52418, Stop: 52576, Start Num: 17

Candidate Starts for Amelie_70:

(2, 52208), (4, 52262), (6, 52274), (7, 52283), (8, 52304), (10, 52337), (12, 52358), (Start: 17 @52418 has 12 MA's), (31, 52487), (37, 52541),

Gene: Amgine_88 Start: 57933, Stop: 58067, Start Num: 26

Candidate Starts for Amgine_88:

(Start: 26 @57933 has 7 MA's), (31, 57969), (34, 57990), (35, 58002),

Gene: Amohnition_86 Start: 56925, Stop: 57068, Start Num: 26

Candidate Starts for Amohnition_86:

(Start: 26 @56925 has 7 MA's), (31, 56964), (35, 56997),

Gene: Anaya_92 Start: 57721, Stop: 57882, Start Num: 20

Candidate Starts for Anaya_92:

(5, 57550), (Start: 20 @57721 has 96 MA's), (Start: 26 @57751 has 7 MA's), (34, 57808), (37, 57841),

Gene: Angelica_86 Start: 55917, Stop: 56078, Start Num: 20

Candidate Starts for Angelica_86:

(Start: 20 @55917 has 96 MA's), (Start: 26 @55947 has 7 MA's), (34, 56004), (37, 56037),

Gene: Anma_89 Start: 56880, Stop: 57047, Start Num: 20

Candidate Starts for Anma_89:

(Start: 20 @56880 has 96 MA's), (34, 56967), (37, 57000),

Gene: Apocalypse_91 Start: 56863, Stop: 57024, Start Num: 20

Candidate Starts for Apocalypse_91:

(Start: 20 @56863 has 96 MA's), (25, 56884), (Start: 26 @56893 has 7 MA's), (34, 56950), (37, 56983),

Gene: Applecrisp_86 Start: 57113, Stop: 57247, Start Num: 26

Candidate Starts for Applecrisp_86:

(Start: 26 @57113 has 7 MA's), (31, 57149), (34, 57170), (35, 57182),

Gene: Asayake_89 Start: 56818, Stop: 56979, Start Num: 20

Candidate Starts for Asayake_89:

(5, 56647), (Start: 20 @56818 has 96 MA's), (25, 56839), (Start: 26 @56848 has 7 MA's), (34, 56905), (37, 56938),

Gene: Atiba_90 Start: 56466, Stop: 56627, Start Num: 20

Candidate Starts for Atiba_90:

(5, 56295), (Start: 20 @56466 has 96 MA's), (25, 56487), (Start: 26 @56496 has 7 MA's), (34, 56553), (37, 56586),

Gene: BEEST_89 Start: 56818, Stop: 56979, Start Num: 20

Candidate Starts for BEEST_89:

(5, 56647), (Start: 20 @56818 has 96 MA's), (25, 56839), (Start: 26 @56848 has 7 MA's), (34, 56905), (37, 56938),

Gene: BGlluviae_88 Start: 56198, Stop: 56359, Start Num: 20

Candidate Starts for BGlluviae_88:

(Start: 20 @56198 has 96 MA's), (Start: 26 @56228 has 7 MA's), (34, 56285), (37, 56318),

Gene: BaghaKamala_88 Start: 56046, Stop: 56207, Start Num: 20

Candidate Starts for BaghaKamala_88:

(5, 55875), (Start: 20 @56046 has 96 MA's), (25, 56067), (Start: 26 @56076 has 7 MA's), (34, 56133), (37, 56166),

Gene: BarrelRoll_89 Start: 56574, Stop: 56735, Start Num: 20

Candidate Starts for BarrelRoll_89:

(5, 56403), (Start: 20 @56574 has 96 MA's), (Start: 26 @56604 has 7 MA's), (34, 56661), (37, 56694),

Gene: Beezoo_92 Start: 57404, Stop: 57565, Start Num: 20

Candidate Starts for Beezoo_92:

(Start: 20 @57404 has 96 MA's), (25, 57425), (Start: 26 @57434 has 7 MA's), (34, 57491), (37, 57524),

Gene: Bella96_90 Start: 57068, Stop: 57235, Start Num: 20

Candidate Starts for Bella96_90:

(Start: 20 @57068 has 96 MA's), (34, 57155), (37, 57188),

Gene: Belladonna_89 Start: 56621, Stop: 56782, Start Num: 20

Candidate Starts for Belladonna_89:

(5, 56450), (Start: 20 @56621 has 96 MA's), (25, 56642), (Start: 26 @56651 has 7 MA's), (34, 56708), (37, 56741),

Gene: Bern_90 Start: 55076, Stop: 55237, Start Num: 20

Candidate Starts for Bern_90:

(Start: 20 @55076 has 96 MA's), (Start: 26 @55106 has 7 MA's), (34, 55163), (37, 55196), (39, 55220),

Gene: Biglebops_70 Start: 52433, Stop: 52591, Start Num: 17

Candidate Starts for Biglebops_70:

(2, 52223), (4, 52277), (6, 52289), (7, 52298), (8, 52319), (10, 52352), (12, 52373), (Start: 17 @52433 has 12 MA's), (31, 52502), (37, 52556),

Gene: Blizzard_89 Start: 56818, Stop: 56979, Start Num: 20

Candidate Starts for Blizzard_89:

(5, 56647), (Start: 20 @56818 has 96 MA's), (25, 56839), (Start: 26 @56848 has 7 MA's), (34, 56905), (37, 56938),

Gene: Boiiii_89 Start: 56820, Stop: 56981, Start Num: 20

Candidate Starts for Boiiii_89:

(5, 56649), (Start: 20 @56820 has 96 MA's), (25, 56841), (Start: 26 @56850 has 7 MA's), (34, 56907), (37, 56940),

Gene: Bryler_88 Start: 54748, Stop: 54918, Start Num: 20

Candidate Starts for Bryler_88:

(Start: 20 @54748 has 96 MA's), (34, 54838),

Gene: CREW_88 Start: 56621, Stop: 56782, Start Num: 20

Candidate Starts for CREW_88:

(5, 56450), (Start: 20 @56621 has 96 MA's), (25, 56642), (Start: 26 @56651 has 7 MA's), (34, 56708), (37, 56741),

Gene: Cain_96 Start: 57895, Stop: 58065, Start Num: 20

Candidate Starts for Cain_96:

(Start: 20 @57895 has 96 MA's), (34, 57985),

Gene: CallaLilly_89 Start: 56544, Stop: 56705, Start Num: 20

Candidate Starts for CallaLilly_89:

(5, 56373), (Start: 20 @56544 has 96 MA's), (25, 56565), (Start: 26 @56574 has 7 MA's), (34, 56631), (37, 56664),

Gene: Capricorn_89 Start: 56621, Stop: 56782, Start Num: 20

Candidate Starts for Capricorn_89:

(5, 56450), (Start: 20 @56621 has 96 MA's), (25, 56642), (Start: 26 @56651 has 7 MA's), (34, 56708), (37, 56741),

Gene: CaseJules_91 Start: 56818, Stop: 56979, Start Num: 20

Candidate Starts for CaseJules_91:

(5, 56647), (Start: 20 @56818 has 96 MA's), (25, 56839), (Start: 26 @56848 has 7 MA's), (34, 56905), (37, 56938),

Gene: Chavito_89 Start: 57982, Stop: 58158, Start Num: 17

Candidate Starts for Chavito_89:

(Start: 17 @57982 has 12 MA's), (19, 57991), (Start: 26 @58024 has 7 MA's), (31, 58060), (34, 58081),

Gene: CheetoDust_89 Start: 56016, Stop: 56177, Start Num: 20

Candidate Starts for CheetoDust_89:

(Start: 20 @56016 has 96 MA's), (Start: 26 @56046 has 7 MA's), (34, 56103), (37, 56136),

Gene: Chris_90 Start: 57170, Stop: 57322, Start Num: 23

Candidate Starts for Chris_90:

(8, 57014), (16, 57134), (Start: 23 @57170 has 8 MA's), (Start: 26 @57185 has 7 MA's), (31, 57221), (32, 57224), (39, 57290),

Gene: Clipper_93 Start: 57298, Stop: 57459, Start Num: 20

Candidate Starts for Clipper_93:

(Start: 20 @57298 has 96 MA's), (Start: 26 @57328 has 7 MA's), (34, 57385), (37, 57418),

Gene: CrimD_89 Start: 56666, Stop: 56827, Start Num: 20

Candidate Starts for CrimD_89:

(5, 56495), (Start: 20 @56666 has 96 MA's), (Start: 26 @56696 has 7 MA's), (34, 56753), (37, 56786),

Gene: Curiosium_99 Start: 58643, Stop: 58810, Start Num: 18

Candidate Starts for Curiosium_99:

(11, 58559), (15, 58619), (Start: 18 @58643 has 3 MA's), (Start: 26 @58679 has 7 MA's), (34, 58736),

Gene: Dalmuri_89 Start: 56621, Stop: 56782, Start Num: 20

Candidate Starts for Dalmuri_89:

(5, 56450), (Start: 20 @56621 has 96 MA's), (25, 56642), (Start: 26 @56651 has 7 MA's), (34, 56708), (37, 56741),

Gene: DartGoblin_91 Start: 56728, Stop: 56895, Start Num: 20

Candidate Starts for DartGoblin_91:

(Start: 20 @56728 has 96 MA's), (34, 56815), (37, 56848), (39, 56872),

Gene: DarthP_86 Start: 56778, Stop: 56921, Start Num: 26

Candidate Starts for DarthP_86:

(Start: 26 @56778 has 7 MA's), (31, 56817), (35, 56850),

Gene: Dartin_89 Start: 57633, Stop: 57800, Start Num: 19

Candidate Starts for Dartin_89:

(Start: 17 @57624 has 12 MA's), (19, 57633), (Start: 26 @57666 has 7 MA's), (31, 57702), (34, 57723),

Gene: Deby_89 Start: 57192, Stop: 57353, Start Num: 20

Candidate Starts for Deby_89:

(Start: 20 @57192 has 96 MA's), (Start: 26 @57222 has 7 MA's), (34, 57279), (37, 57312),

Gene: Devera_95 Start: 57498, Stop: 57659, Start Num: 20

Candidate Starts for Devera_95:

(Start: 20 @57498 has 96 MA's), (34, 57585),

Gene: Dole_92 Start: 57501, Stop: 57662, Start Num: 20

Candidate Starts for Dole_92:

(Start: 20 @57501 has 96 MA's), (34, 57588),

Gene: DrHayes_89 Start: 56880, Stop: 57047, Start Num: 20

Candidate Starts for DrHayes_89:

(Start: 20 @56880 has 96 MA's), (34, 56967), (37, 57000),

Gene: Durfee_89 Start: 56818, Stop: 56979, Start Num: 20

Candidate Starts for Durfee_89:

(5, 56647), (Start: 20 @56818 has 96 MA's), (25, 56839), (Start: 26 @56848 has 7 MA's), (34, 56905), (37, 56938),

Gene: Efra2_96 Start: 57967, Stop: 58128, Start Num: 20

Candidate Starts for Efra2_96:

(Start: 20 @57967 has 96 MA's), (34, 58054),

Gene: Ellie_87 Start: 57103, Stop: 57237, Start Num: 26

Candidate Starts for Ellie_87:

(Start: 26 @57103 has 7 MA's), (31, 57139), (34, 57160), (35, 57172),

Gene: Emerson_92 Start: 57216, Stop: 57383, Start Num: 18

Candidate Starts for Emerson_92:

(3, 57003), (9, 57099), (14, 57180), (Start: 18 @57216 has 3 MA's), (24, 57240), (Start: 26 @57252 has 7 MA's), (34, 57309), (37, 57342),

Gene: Enkosi_72 Start: 55031, Stop: 55189, Start Num: 17

Candidate Starts for Enkosi_72:

(2, 54821), (4, 54875), (6, 54887), (7, 54896), (8, 54917), (10, 54950), (12, 54971), (Start: 17 @55031 has 12 MA's), (31, 55100), (37, 55154),

Gene: Fefferhead_89 Start: 56894, Stop: 57028, Start Num: 26

Candidate Starts for Fefferhead_89:

(Start: 26 @56894 has 7 MA's), (31, 56930), (34, 56951), (35, 56963),

Gene: Ganymede_89 Start: 56630, Stop: 56791, Start Num: 20

Candidate Starts for Ganymede_89:

(Start: 20 @56630 has 96 MA's), (25, 56651), (Start: 26 @56660 has 7 MA's), (34, 56717), (37, 56750),

Gene: Guanica15_95 Start: 57656, Stop: 57817, Start Num: 20

Candidate Starts for Guanica15_95:

(Start: 20 @57656 has 96 MA's), (34, 57743),

Gene: Hammy_86 Start: 56768, Stop: 56911, Start Num: 26

Candidate Starts for Hammy_86:

(Start: 26 @56768 has 7 MA's), (31, 56807), (35, 56840),

Gene: HedwigODU_89 Start: 56657, Stop: 56818, Start Num: 20

Candidate Starts for HedwigODU_89:

(Start: 20 @56657 has 96 MA's), (Start: 26 @56687 has 7 MA's), (34, 56744), (37, 56777),

Gene: Homura_88 Start: 56621, Stop: 56782, Start Num: 20

Candidate Starts for Homura_88:

(5, 56450), (Start: 20 @56621 has 96 MA's), (25, 56642), (Start: 26 @56651 has 7 MA's), (34, 56708), (37, 56741),

Gene: Hyperbowlee_88 Start: 56818, Stop: 56979, Start Num: 20

Candidate Starts for Hyperbowlee_88:

(5, 56647), (Start: 20 @56818 has 96 MA's), (25, 56839), (Start: 26 @56848 has 7 MA's), (34, 56905), (37, 56938),

Gene: Illumine_93 Start: 57500, Stop: 57661, Start Num: 20

Candidate Starts for Illumine_93:

(Start: 20 @57500 has 96 MA's), (34, 57587),

Gene: Inky_89 Start: 56621, Stop: 56782, Start Num: 20

Candidate Starts for Inky_89:

(5, 56450), (Start: 20 @56621 has 96 MA's), (25, 56642), (Start: 26 @56651 has 7 MA's), (34, 56708), (37, 56741),

Gene: JAWS_88 Start: 56604, Stop: 56765, Start Num: 20

Candidate Starts for JAWS_88:

(Start: 20 @56604 has 96 MA's), (Start: 26 @56634 has 7 MA's), (34, 56691), (37, 56724),

Gene: Jarvi_89 Start: 56621, Stop: 56782, Start Num: 20

Candidate Starts for Jarvi_89:

(5, 56450), (Start: 20 @56621 has 96 MA's), (25, 56642), (Start: 26 @56651 has 7 MA's), (34, 56708), (37, 56741),

Gene: Jayhawk_91 Start: 56634, Stop: 56795, Start Num: 20

Candidate Starts for Jayhawk_91:

(5, 56463), (Start: 20 @56634 has 96 MA's), (Start: 26 @56664 has 7 MA's), (34, 56721), (37, 56754),

Gene: Jeckyll_89 Start: 56621, Stop: 56782, Start Num: 20

Candidate Starts for Jeckyll_89:

(5, 56450), (Start: 20 @56621 has 96 MA's), (25, 56642), (Start: 26 @56651 has 7 MA's), (34, 56708), (37, 56741),

Gene: Joy99_90 Start: 56750, Stop: 56911, Start Num: 20

Candidate Starts for Joy99_90:

(5, 56579), (Start: 20 @56750 has 96 MA's), (25, 56771), (Start: 26 @56780 has 7 MA's), (34, 56837), (37, 56870),

Gene: KiSi_91 Start: 56904, Stop: 57056, Start Num: 23

Candidate Starts for KiSi_91:

(Start: 23 @56904 has 8 MA's), (Start: 26 @56919 has 7 MA's), (31, 56955), (36, 56991), (39, 57024),

Gene: Krueger_93 Start: 57088, Stop: 57258, Start Num: 20

Candidate Starts for Krueger_93:

(Start: 20 @57088 has 96 MA's), (34, 57178),

Gene: LastHope_95 Start: 57401, Stop: 57562, Start Num: 20

Candidate Starts for LastHope_95:

(Start: 20 @57401 has 96 MA's), (Start: 26 @57431 has 7 MA's), (29, 57458), (34, 57488), (37, 57521),

Gene: LaterM_89 Start: 57037, Stop: 57198, Start Num: 20

Candidate Starts for LaterM_89:

(13, 56989), (Start: 20 @57037 has 96 MA's), (Start: 26 @57067 has 7 MA's), (34, 57124), (38, 57172),

Gene: Lavahound_88 Start: 58063, Stop: 58197, Start Num: 26

Candidate Starts for Lavahound_88:

(Start: 26 @58063 has 7 MA's), (31, 58099), (34, 58120), (35, 58132),

Gene: LeMond_90 Start: 56860, Stop: 57012, Start Num: 23

Candidate Starts for LeMond_90:

(Start: 23 @56860 has 8 MA's), (Start: 26 @56875 has 7 MA's), (31, 56911), (36, 56947), (39, 56980),

Gene: LilPharaoh_71 Start: 52146, Stop: 52304, Start Num: 17

Candidate Starts for LilPharaoh_71:

(2, 51936), (4, 51990), (6, 52002), (7, 52011), (8, 52032), (10, 52065), (12, 52086), (Start: 17 @52146 has 12 MA's), (31, 52215), (37, 52269),

Gene: LindNT_87 Start: 56732, Stop: 56893, Start Num: 20

Candidate Starts for LindNT_87:

(Start: 20 @56732 has 96 MA's), (Start: 26 @56762 has 7 MA's), (34, 56819), (37, 56852),

Gene: Llorens_89 Start: 56621, Stop: 56782, Start Num: 20

Candidate Starts for Llorens_89:

(5, 56450), (Start: 20 @56621 has 96 MA's), (25, 56642), (Start: 26 @56651 has 7 MA's), (34, 56708), (37, 56741),

Gene: Lunahalos_89 Start: 56621, Stop: 56782, Start Num: 20

Candidate Starts for Lunahalos_89:

(5, 56450), (Start: 20 @56621 has 96 MA's), (25, 56642), (Start: 26 @56651 has 7 MA's), (34, 56708), (37, 56741),

Gene: MacKat_85 Start: 52182, Stop: 52343, Start Num: 20

Candidate Starts for MacKat_85:

(Start: 20 @52182 has 96 MA's), (Start: 26 @52212 has 7 MA's), (34, 52269), (37, 52302),

Gene: MarkPhew_91 Start: 56993, Stop: 57151, Start Num: 23

Candidate Starts for MarkPhew_91:

(Start: 23 @56993 has 8 MA's), (Start: 26 @57008 has 7 MA's), (30, 57041), (31, 57044),

Gene: McMater_89 Start: 57633, Stop: 57800, Start Num: 19

Candidate Starts for McMater_89:

(Start: 17 @57624 has 12 MA's), (19, 57633), (Start: 26 @57666 has 7 MA's), (31, 57702), (34, 57723),

Gene: Mdavu_71 Start: 52422, Stop: 52580, Start Num: 17

Candidate Starts for Mdavu_71:

(2, 52212), (4, 52266), (6, 52278), (7, 52287), (8, 52308), (10, 52341), (12, 52362), (Start: 17 @52422 has 12 MA's), (31, 52491), (37, 52545),

Gene: MeaningOfLife_91 Start: 57306, Stop: 57467, Start Num: 20

Candidate Starts for MeaningOfLife_91:

(5, 57135), (Start: 20 @57306 has 96 MA's), (25, 57327), (Start: 26 @57336 has 7 MA's), (34, 57393), (37, 57426),

Gene: Megsy_93 Start: 56961, Stop: 57122, Start Num: 20

Candidate Starts for Megsy_93:

(Start: 20 @56961 has 96 MA's), (Start: 26 @56991 has 7 MA's), (27, 56994), (34, 57048), (38, 57096),

Gene: Murucutumbu_89 Start: 57519, Stop: 57680, Start Num: 20

Candidate Starts for Murucutumbu_89:

(Start: 20 @57519 has 96 MA's), (34, 57606), (38, 57654),

Gene: Mynx_90 Start: 56929, Stop: 57090, Start Num: 20

Candidate Starts for Mynx_90:

(5, 56758), (Start: 20 @56929 has 96 MA's), (25, 56950), (Start: 26 @56959 has 7 MA's), (34, 57016), (37, 57049),

Gene: Nibb_91 Start: 56666, Stop: 56824, Start Num: 23

Candidate Starts for Nibb_91:

(Start: 23 @56666 has 8 MA's), (Start: 26 @56681 has 7 MA's), (30, 56714), (31, 56717),

Gene: Nikao_73 Start: 55031, Stop: 55189, Start Num: 17

Candidate Starts for Nikao_73:

(2, 54821), (4, 54875), (6, 54887), (7, 54896), (8, 54917), (10, 54950), (12, 54971), (Start: 17 @55031 has 12 MA's), (31, 55100), (37, 55154),

Gene: Niklas_90 Start: 57664, Stop: 57840, Start Num: 17

Candidate Starts for Niklas_90:

(Start: 17 @57664 has 12 MA's), (19, 57673), (Start: 26 @57703 has 7 MA's), (34, 57760),

Gene: Nutello_70 Start: 52418, Stop: 52576, Start Num: 17

Candidate Starts for Nutello_70:

(2, 52208), (4, 52262), (6, 52274), (7, 52283), (8, 52304), (10, 52337), (12, 52358), (Start: 17 @52418 has 12 MA's), (31, 52487), (37, 52541),

Gene: Oscar_91 Start: 56784, Stop: 56936, Start Num: 23

Candidate Starts for Oscar_91:

(Start: 23 @56784 has 8 MA's), (Start: 26 @56799 has 7 MA's), (31, 56835), (36, 56871), (39, 56904),

Gene: Padfoot_89 Start: 56818, Stop: 56979, Start Num: 20

Candidate Starts for Padfoot_89:

(5, 56647), (Start: 20 @56818 has 96 MA's), (25, 56839), (Start: 26 @56848 has 7 MA's), (34, 56905), (37, 56938),

Gene: Padpat_93 Start: 57216, Stop: 57383, Start Num: 18

Candidate Starts for Padpat_93:

(3, 57003), (9, 57099), (14, 57180), (Start: 18 @57216 has 3 MA's), (24, 57240), (Start: 26 @57252 has 7 MA's), (34, 57309), (37, 57342),

Gene: Peanam_90 Start: 57643, Stop: 57819, Start Num: 17

Candidate Starts for Peanam_90:

(Start: 17 @57643 has 12 MA's), (Start: 26 @57685 has 7 MA's), (31, 57721), (34, 57742),

Gene: Peel_89 Start: 56623, Stop: 56784, Start Num: 20

Candidate Starts for Peel_89:

(5, 56452), (Start: 20 @56623 has 96 MA's), (25, 56644), (Start: 26 @56653 has 7 MA's), (34, 56710), (37, 56743),

Gene: PhelpsODU_86 Start: 53663, Stop: 53833, Start Num: 20

Candidate Starts for PhelpsODU_86:

(Start: 20 @53663 has 96 MA's), (34, 53753),

Gene: Phrank_96 Start: 57882, Stop: 58046, Start Num: 20

Candidate Starts for Phrank_96:

(Start: 20 @57882 has 96 MA's), (34, 57972),

Gene: Piatt_88 Start: 56818, Stop: 56979, Start Num: 20

Candidate Starts for Piatt_88:

(5, 56647), (Start: 20 @56818 has 96 MA's), (25, 56839), (Start: 26 @56848 has 7 MA's), (34, 56905), (37, 56938),

Gene: Pisa1_90 Start: 57122, Stop: 57313, Start Num: 15

Candidate Starts for Pisa1_90:

(11, 57062), (15, 57122), (Start: 18 @57146 has 3 MA's), (Start: 26 @57182 has 7 MA's), (34, 57239), (37, 57272), (39, 57296),

Gene: Pisa4_84 Start: 52515, Stop: 52682, Start Num: 18

Candidate Starts for Pisa4_84:

(11, 52431), (15, 52491), (Start: 18 @52515 has 3 MA's), (Start: 26 @52551 has 7 MA's), (34, 52608), (37, 52641), (39, 52665),

Gene: Pokerus_89 Start: 56627, Stop: 56788, Start Num: 20

Candidate Starts for Pokerus_89:

(5, 56456), (Start: 20 @56627 has 96 MA's), (25, 56648), (Start: 26 @56657 has 7 MA's), (34, 56714), (37, 56747),

Gene: Prithvi_91 Start: 57030, Stop: 57191, Start Num: 20

Candidate Starts for Prithvi_91:

(5, 56859), (Start: 20 @57030 has 96 MA's), (Start: 26 @57060 has 7 MA's), (34, 57117), (37, 57150),

Gene: QuincyRose_87 Start: 56630, Stop: 56791, Start Num: 20

Candidate Starts for QuincyRose_87:

(Start: 20 @56630 has 96 MA's), (25, 56651), (Start: 26 @56660 has 7 MA's), (34, 56717), (37, 56750),

Gene: Ramen_90 Start: 56373, Stop: 56534, Start Num: 20

Candidate Starts for Ramen_90:

(Start: 20 @56373 has 96 MA's), (25, 56394), (Start: 26 @56403 has 7 MA's), (34, 56460), (37, 56493),

Gene: Rapunzel97_91 Start: 56589, Stop: 56750, Start Num: 20

Candidate Starts for Rapunzel97_91:

(5, 56418), (Start: 20 @56589 has 96 MA's), (Start: 26 @56619 has 7 MA's), (34, 56676), (37, 56709),

Gene: Richo_89 Start: 57633, Stop: 57800, Start Num: 19

Candidate Starts for Richo_89:

(Start: 17 @57624 has 12 MA's), (19, 57633), (Start: 26 @57666 has 7 MA's), (31, 57702), (34, 57723),

Gene: Rosmarinus_89 Start: 56609, Stop: 56770, Start Num: 20

Candidate Starts for Rosmarinus_89:

(5, 56438), (Start: 20 @56609 has 96 MA's), (25, 56630), (Start: 26 @56639 has 7 MA's), (34, 56696), (37, 56729),

Gene: SamuelLPlaqson_89 Start: 56880, Stop: 57047, Start Num: 20

Candidate Starts for SamuelLPlaqson_89:

(Start: 20 @56880 has 96 MA's), (34, 56967), (37, 57000),

Gene: Scarlett_90 Start: 56652, Stop: 56804, Start Num: 23

Candidate Starts for Scarlett_90:

(Start: 23 @56652 has 8 MA's), (Start: 26 @56667 has 7 MA's), (31, 56703), (36, 56739), (39, 56772),

Gene: SgtBeansprout_71 Start: 52418, Stop: 52576, Start Num: 17

Candidate Starts for SgtBeansprout_71:

(2, 52208), (4, 52262), (6, 52274), (7, 52283), (8, 52304), (10, 52337), (12, 52358), (Start: 17 @52418 has 12 MA's), (31, 52487), (37, 52541),

Gene: Shadow1_93 Start: 57228, Stop: 57392, Start Num: 20

Candidate Starts for Shadow1_93:

(Start: 20 @57228 has 96 MA's), (34, 57318),

Gene: Shaobing_89 Start: 57705, Stop: 57881, Start Num: 17

Candidate Starts for Shaobing_89:

(Start: 17 @57705 has 12 MA's), (19, 57714), (Start: 26 @57744 has 7 MA's), (34, 57801),

Gene: ShiaSurprise_90 Start: 56818, Stop: 56979, Start Num: 20

Candidate Starts for ShiaSurprise_90:

(5, 56647), (Start: 20 @56818 has 96 MA's), (25, 56839), (Start: 26 @56848 has 7 MA's), (34, 56905), (37, 56938),

Gene: SirPhilip_89 Start: 56815, Stop: 56958, Start Num: 23

Candidate Starts for SirPhilip_89:

(Start: 23 @56815 has 8 MA's), (25, 56821), (30, 56863), (34, 56887),

Gene: Slimphazie_91 Start: 57045, Stop: 57206, Start Num: 20

Candidate Starts for Slimphazie_91:

(5, 56874), (Start: 20 @57045 has 96 MA's), (Start: 26 @57075 has 7 MA's), (34, 57132), (37, 57165),

Gene: Spock_89 Start: 56622, Stop: 56783, Start Num: 20

Candidate Starts for Spock_89:

(5, 56451), (Start: 20 @56622 has 96 MA's), (25, 56643), (Start: 26 @56652 has 7 MA's), (34, 56709), (37, 56742),

Gene: Stinson_90 Start: 56798, Stop: 56959, Start Num: 20

Candidate Starts for Stinson_90:

(Start: 20 @56798 has 96 MA's), (34, 56885),

Gene: Sulley_86 Start: 56193, Stop: 56354, Start Num: 20

Candidate Starts for Sulley_86:

(Start: 20 @56193 has 96 MA's), (Start: 26 @56223 has 7 MA's), (34, 56280), (37, 56313),

Gene: Sunflower1121_93 Start: 56987, Stop: 57151, Start Num: 20

Candidate Starts for Sunflower1121_93:

(Start: 20 @56987 has 96 MA's), (34, 57077),

Gene: Syra333_92 Start: 57044, Stop: 57214, Start Num: 20

Candidate Starts for Syra333_92:

(Start: 20 @57044 has 96 MA's), (34, 57134),

Gene: TClif_89 Start: 56195, Stop: 56344, Start Num: 22

Candidate Starts for TClif_89:

(Start: 22 @56195 has 1 MA's), (Start: 23 @56198 has 8 MA's), (Start: 26 @56213 has 7 MA's), (33, 56261), (34, 56270), (35, 56282), (39, 56327),

Gene: Tachez_89 Start: 56466, Stop: 56627, Start Num: 20

Candidate Starts for Tachez_89:

(5, 56295), (Start: 20 @56466 has 96 MA's), (25, 56487), (Start: 26 @56496 has 7 MA's), (34, 56553), (37, 56586),

Gene: TaiwanKao_90 Start: 56670, Stop: 56831, Start Num: 20

Candidate Starts for TaiwanKao_90:

(Start: 20 @56670 has 96 MA's), (Start: 26 @56700 has 7 MA's), (34, 56757), (37, 56790),

Gene: Teejan_72 Start: 55031, Stop: 55189, Start Num: 17

Candidate Starts for Teejan_72:

(2, 54821), (4, 54875), (6, 54887), (7, 54896), (8, 54917), (10, 54950), (12, 54971), (Start: 17 @55031 has 12 MA's), (31, 55100), (37, 55154),

Gene: Tierra_96 Start: 58508, Stop: 58678, Start Num: 20
Candidate Starts for Tierra_96:
(Start: 20 @58508 has 96 MA's), (34, 58598),

Gene: Tigress9_94 Start: 57416, Stop: 57586, Start Num: 20
Candidate Starts for Tigress9_94:
(Start: 20 @57416 has 96 MA's), (34, 57506),

Gene: TingHuaYa_93 Start: 57729, Stop: 57890, Start Num: 20
Candidate Starts for TingHuaYa_93:
(5, 57558), (Start: 20 @57729 has 96 MA's), (Start: 26 @57759 has 7 MA's), (29, 57786), (34, 57816), (37, 57849),

Gene: TiniBug_88 Start: 56996, Stop: 57163, Start Num: 20
Candidate Starts for TiniBug_88:
(Start: 20 @56996 has 96 MA's), (34, 57083), (37, 57116),

Gene: Tiri_89 Start: 56360, Stop: 56521, Start Num: 20
Candidate Starts for Tiri_89:
(Start: 20 @56360 has 96 MA's), (Start: 26 @56390 has 7 MA's), (34, 56447), (37, 56480),

Gene: Topper_89 Start: 56621, Stop: 56782, Start Num: 20
Candidate Starts for Topper_89:
(5, 56450), (Start: 20 @56621 has 96 MA's), (25, 56642), (Start: 26 @56651 has 7 MA's), (34, 56708), (37, 56741),

Gene: Torres_73 Start: 55032, Stop: 55190, Start Num: 17
Candidate Starts for Torres_73:
(2, 54822), (4, 54876), (6, 54888), (7, 54897), (8, 54918), (10, 54951), (12, 54972), (Start: 17 @55032 has 12 MA's), (31, 55101), (37, 55155),

Gene: TreyKay_91 Start: 57030, Stop: 57191, Start Num: 20
Candidate Starts for TreyKay_91:
(5, 56859), (Start: 20 @57030 has 96 MA's), (Start: 26 @57060 has 7 MA's), (34, 57117), (37, 57150),

Gene: Trice_70 Start: 52419, Stop: 52577, Start Num: 17
Candidate Starts for Trice_70:
(2, 52209), (4, 52263), (6, 52275), (7, 52284), (8, 52305), (10, 52338), (12, 52359), (Start: 17 @52419 has 12 MA's), (31, 52488), (37, 52542),

Gene: TruffulaTree_91 Start: 57011, Stop: 57172, Start Num: 20
Candidate Starts for TruffulaTree_91:
(5, 56840), (Start: 20 @57011 has 96 MA's), (Start: 26 @57041 has 7 MA's), (34, 57098), (37, 57131),

Gene: Twitch_89 Start: 56623, Stop: 56784, Start Num: 20
Candidate Starts for Twitch_89:
(5, 56452), (Start: 20 @56623 has 96 MA's), (25, 56644), (Start: 26 @56653 has 7 MA's), (34, 56710), (37, 56743),

Gene: Unicorn_96 Start: 58291, Stop: 58461, Start Num: 20

Candidate Starts for Unicorn_96:
(Start: 20 @58291 has 96 MA's), (34, 58381),

Gene: Urkel_89 Start: 56880, Stop: 57047, Start Num: 20
Candidate Starts for Urkel_89:
(Start: 20 @56880 has 96 MA's), (34, 56967), (37, 57000),

Gene: Validus_95 Start: 58505, Stop: 58669, Start Num: 21
Candidate Starts for Validus_95:
(1, 58148), (5, 58331), (Start: 21 @58505 has 1 MA's), (28, 58559), (31, 58571), (34, 58592),

Gene: Veliki_90 Start: 56589, Stop: 56750, Start Num: 20
Candidate Starts for Veliki_90:
(Start: 20 @56589 has 96 MA's), (Start: 26 @56619 has 7 MA's), (34, 56676), (37, 56709),

Gene: Ximenita_95 Start: 57796, Stop: 57960, Start Num: 20
Candidate Starts for Ximenita_95:
(Start: 20 @57796 has 96 MA's), (34, 57880), (35, 57892),

Gene: YoureAdopted_88 Start: 56415, Stop: 56576, Start Num: 20
Candidate Starts for YoureAdopted_88:
(Start: 20 @56415 has 96 MA's), (25, 56436), (Start: 26 @56445 has 7 MA's), (34, 56502), (37, 56535),

Gene: Yuna_92 Start: 58580, Stop: 58747, Start Num: 20
Candidate Starts for Yuna_92:
(Start: 20 @58580 has 96 MA's), (34, 58670), (35, 58682),

Gene: Yunkel11_94 Start: 57232, Stop: 57393, Start Num: 20
Candidate Starts for Yunkel11_94:
(Start: 20 @57232 has 96 MA's), (34, 57319),

Gene: Zabiza_85 Start: 52962, Stop: 53123, Start Num: 20
Candidate Starts for Zabiza_85:
(Start: 20 @52962 has 96 MA's), (Start: 26 @52992 has 7 MA's), (34, 53049), (37, 53082),

Gene: Zavala_91 Start: 56880, Stop: 57041, Start Num: 20
Candidate Starts for Zavala_91:
(Start: 20 @56880 has 96 MA's), (25, 56901), (Start: 26 @56910 has 7 MA's), (34, 56967), (37, 57000),