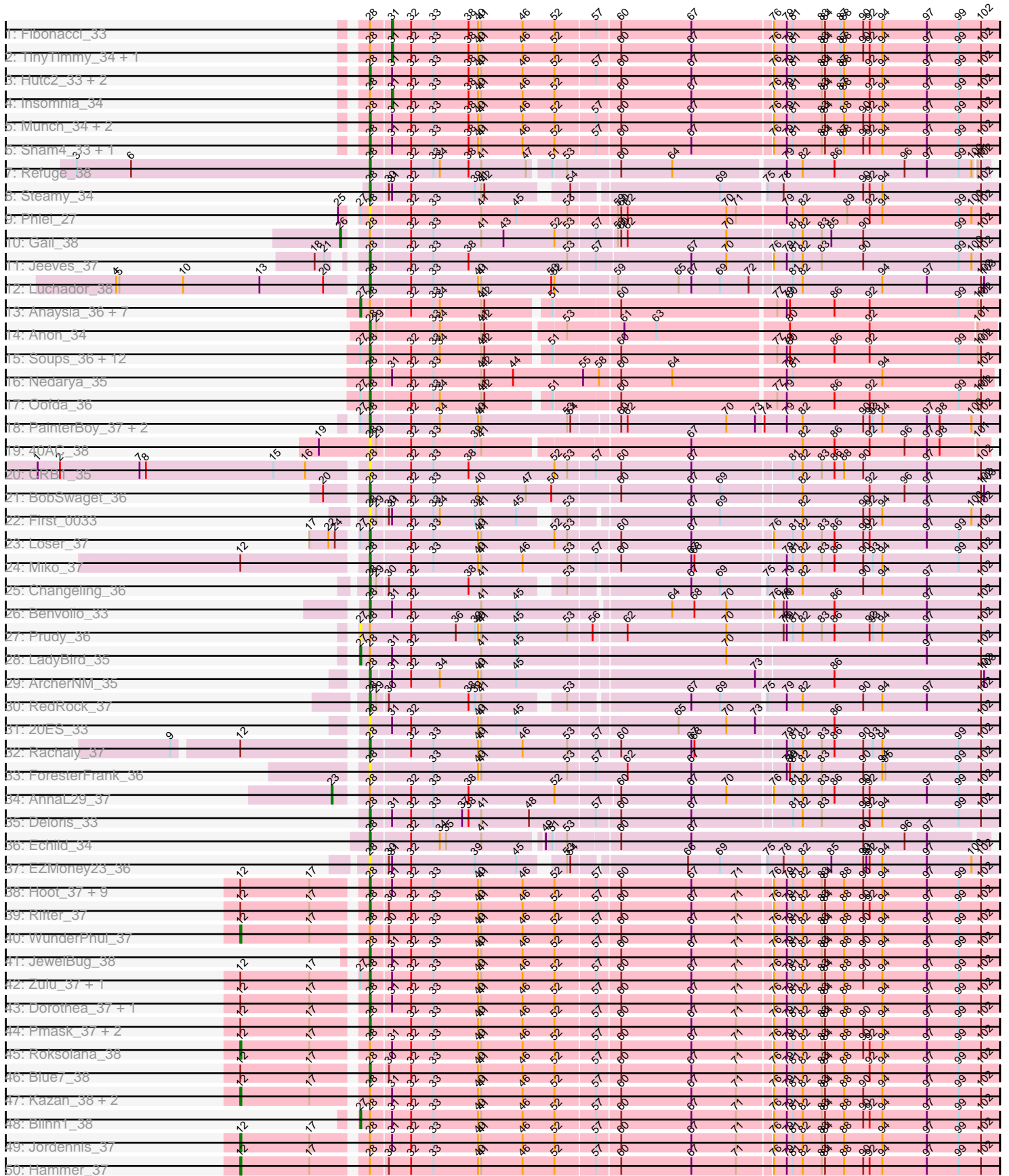
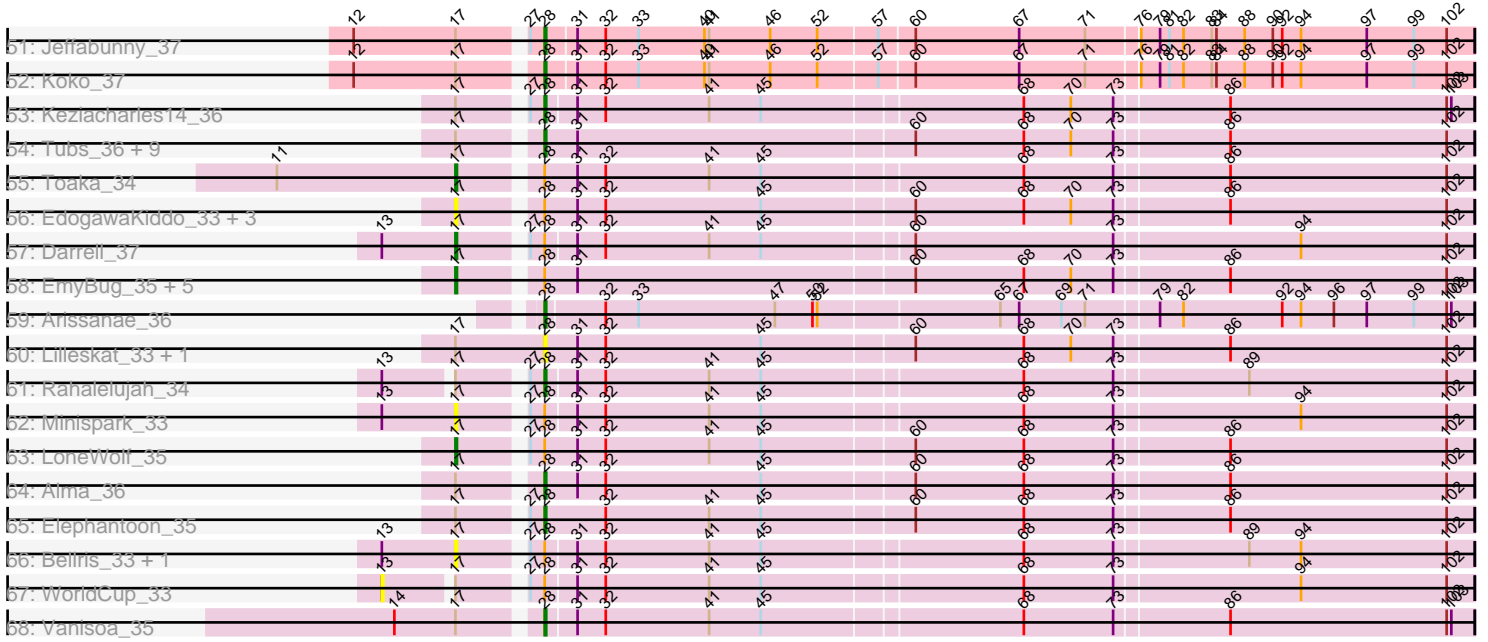


Pham 294532



Pham 294532



Note: Tracks are now grouped by subcluster and scaled. Switching in subcluster is indicated by changes in track color. Track scale is now set by default to display the region 30 bp upstream of start 1 to 30 bp downstream of the last possible start. If this default region is judged to be packed too tightly with annotated starts, the track will be further scaled to only show that region of the ORF with annotated starts. This action will be indicated by adding "Zoomed" to the title. For starts, yellow indicates the location of called starts comprised solely of Glimmer/GeneMark auto-annotations, green indicates the location of called starts with at least 1 manual gene annotation.

Pham 294532 Report

This analysis was run 04/18/26 on database version 643.

Pham number 294532 has 129 members, 19 are drafts.

Phages represented in each track:

- Track 1 : Fibonacci_33
- Track 2 : TinyTimmy_34, Et2Brutus_33
- Track 3 : Hutc2_33, Bud_33, Bowtie_34
- Track 4 : Insomnia_34
- Track 5 : Munch_34, Jabith_34, Aneem_34
- Track 6 : Sham4_33, Flaverint_34
- Track 7 : Refuge_38
- Track 8 : Steamy_34
- Track 9 : Phlei_27
- Track 10 : Gail_38
- Track 11 : Jeeves_37
- Track 12 : Luchador_38
- Track 13 : Anaysia_36, Ravana_37, MinecraftSteve_37, Switzerland_36, Boohoo_36, DekHockey33_36, Battleship_37, Strosahl_36
- Track 14 : Anon_34
- Track 15 : Soups_36, Warrior24_36, LastResort_36, Waits_36, Remus_36, KatherineG_36, Rosalind_36, Nebulosus_36, Epsocamisio_36, JSwag_36, ReMo_36, Looper_37, ShayRa_37
- Track 16 : Nedarya_35
- Track 17 : Oofda_36
- Track 18 : PainterBoy_37, EagleEye_38, Lucyedi_37
- Track 19 : 40AC_38
- Track 20 : CRB1_35
- Track 21 : BobSwaget_36
- Track 22 : First_0033
- Track 23 : Loser_37
- Track 24 : Miko_37
- Track 25 : Changeling_36
- Track 26 : Benvolio_33
- Track 27 : Prudy_36
- Track 28 : LadyBird_35
- Track 29 : ArcherNM_35
- Track 30 : RedRock_37
- Track 31 : 20ES_33
- Track 32 : Rachaly_37
- Track 33 : ForesterFrank_36
- Track 34 : AnnaL29_37

- Track 35 : Deloris_33
- Track 36 : Echild_34
- Track 37 : EZMoney23_36
- Track 38 : Hoot_37, EricB_37, BABullseye_37, Helmet_38, Newrala_37, Chartreuse_37, Indra_39, Cookiedough_37, Temprado_37, Isiphiwo_37
- Track 39 : Rifter_37
- Track 40 : WunderPhul_37
- Track 41 : JewelBug_38
- Track 42 : Zulu_37, Lilbunny_36
- Track 43 : Dorothea_37, Polyphemus_37
- Track 44 : Pmask_37, Gladiator_37, SuperAwesome_37
- Track 45 : Roksolana_38
- Track 46 : Blue7_38
- Track 47 : Kazan_38, VohminGhazi_37, McFly_37
- Track 48 : Blinn1_38
- Track 49 : Jordennis_37
- Track 50 : Hammer_37
- Track 51 : Jeffabunny_37
- Track 52 : Koko_37
- Track 53 : Keziacharles14_36
- Track 54 : Tubs_36, Catalina_37, PackMan_35, Phaeder_36, Aliter_36, Eidsmoe_36, Conquerage_36, Myxus_36, Priya_36, HortumSL17_36
- Track 55 : Toaka_34
- Track 56 : EdogawaKiddo_33, Jiawan_34, Onglai_34, Hanray_34
- Track 57 : Darrell_37
- Track 58 : EmyBug_35, Ugenie5_32, Fayely_36, Spouty_36, Scherzo_35, Qobbit_36
- Track 59 : Arissanae_36
- Track 60 : Lilleskat_33, Halex_34
- Track 61 : Rahalelujah_34
- Track 62 : Minispark_33
- Track 63 : LoneWolf_35
- Track 64 : Alma_36
- Track 65 : Elephantoon_35
- Track 66 : Bellris_33, CogOmlette_33
- Track 67 : WorldCup_33
- Track 68 : Vanisoa_35

Summary of Final Annotations (See graph section above for start numbers):

The start number called the most often in the published annotations is 28, it was called in 79 of the 110 non-draft genes in the pham.

Genes that call this "Most Annotated" start:

- 20ES_33, 40AC_38, Aliter_36, Alma_36, Aneem_34, Anon_34, ArcherNM_35, Arissanae_36, BABullseye_37, Benvolio_33, Blue7_38, BobSwaget_36, Bowtie_34, Bud_33, CRB1_35, Catalina_37, Changeling_36, Chartreuse_37, Conquerage_36, Cookiedough_37, Deloris_33, Dorothea_37, EZMoney23_36, EagleEye_38, Echild_34, Eidsmoe_36, Elephantoon_35, Epsocamisio_36, EricB_37, First_0033, Flaverint_34, ForesterFrank_36, Gladiator_37, Helmet_38, Halex_34, Hoot_37,

HortumSL17_36, Hutc2_33, Indra_39, Isiphiwo_37, JSwag_36, Jabith_34, Jeeves_37, Jeffabunny_37, JewelBug_38, KatherineG_36, Keziacharles14_36, Koko_37, LastResort_36, Lilbunny_36, Lilleskat_33, Looper_37, Loser_37, Luchador_38, Lucyedi_37, Miko_37, Munch_34, Myxus_36, Nebulosus_36, Nedarya_35, Newrala_37, Oofda_36, PackMan_35, PainterBoy_37, Phaeder_36, Phlei_27, Pmask_37, Polyphemus_37, Priya_36, Rachaly_37, Rahalelujah_34, ReMo_36, RedRock_37, Refuge_38, Remus_36, Rifter_37, Rosalind_36, Sham4_33, ShayRa_37, Soups_36, Steamy_34, SuperAwesome_37, Temprado_37, Tubs_36, Vanisoa_35, Waits_36, Warrior24_36, Zulu_37,

Genes that have the "Most Annotated" start but do not call it:

- Anaysia_36, AnnaL29_37, Battleship_37, Bellris_33, Blinn1_38, Boohoo_36, CogOmlette_33, Darrell_37, DekHockey33_36, EdogawaKiddo_33, EmyBug_35, Et2Brutus_33, Fayely_36, Fibonacci_33, Gail_38, Hammer_37, Hanray_34, Insomnia_34, Jiawan_34, Jordennis_37, Kazan_38, LadyBird_35, LoneWolf_35, McFly_37, MinecraftSteve_37, Minispark_33, Onglai_34, Prudy_36, Qobbit_36, Ravana_37, Roksolana_38, Scherzo_35, Spouty_36, Strosahl_36, Switzerland_36, TinyTimmy_34, Toaka_34, Ugenie5_32, VohminGhazi_37, WorldCup_33, WunderPhul_37,

Genes that do not have the "Most Annotated" start:

-

Summary by start number:

Start 12:

- Found in 30 of 129 (23.3%) of genes in pham
- Manual Annotations of this start: 7 of 110
- Called 23.3% of time when present
- Phage (with cluster) where this start called: Hammer_37 (A6), Jordennis_37 (A6), Kazan_38 (A6), McFly_37 (A6), Roksolana_38 (A6), VohminGhazi_37 (A6), WunderPhul_37 (A6),

Start 13:

- Found in 7 of 129 (5.4%) of genes in pham
- No Manual Annotations of this start.
- Called 14.3% of time when present
- Phage (with cluster) where this start called: WorldCup_33 (A9),

Start 17:

- Found in 63 of 129 (48.8%) of genes in pham
- Manual Annotations of this start: 9 of 110
- Called 25.4% of time when present
- Phage (with cluster) where this start called: Bellris_33 (A9), CogOmlette_33 (A9), Darrell_37 (A9), EdogawaKiddo_33 (A9), EmyBug_35 (A9), Fayely_36 (A9), Hanray_34 (A9), Jiawan_34 (A9), LoneWolf_35 (A9), Minispark_33 (A9), Onglai_34 (A9), Qobbit_36 (A9), Scherzo_35 (A9), Spouty_36 (A9), Toaka_34 (A9), Ugenie5_32 (A9),

Start 23:

- Found in 1 of 129 (0.8%) of genes in pham
- Manual Annotations of this start: 1 of 110
- Called 100.0% of time when present

- Phage (with cluster) where this start called: AnnaL29_37 (A2),

Start 26:

- Found in 1 of 129 (0.8%) of genes in pham
- Manual Annotations of this start: 1 of 110
- Called 100.0% of time when present
- Phage (with cluster) where this start called: Gail_38 (A14),

Start 27:

- Found in 42 of 129 (32.6%) of genes in pham
- Manual Annotations of this start: 9 of 110
- Called 26.2% of time when present
- Phage (with cluster) where this start called: Anaysia_36 (A15), Battleship_37 (A15), Blinn1_38 (A6), Boohoo_36 (A15), DekHockey33_36 (A15), LadyBird_35 (A2), MinecraftSteve_37 (A15), Prudy_36 (A2), Ravana_37 (A15), Strosahl_36 (A15), Switzerland_36 (A15),

Start 28:

- Found in 129 of 129 (100.0%) of genes in pham
- Manual Annotations of this start: 79 of 110
- Called 68.2% of time when present
- Phage (with cluster) where this start called: 20ES_33 (A2), 40AC_38 (A17), Aliter_36 (A9), Alma_36 (A9), Aneem_34 (A11), Anon_34 (A15), ArcherNM_35 (A2), Arissanae_36 (A9), BABullseye_37 (A6), Benvolio_33 (A2), Blue7_38 (A6), BobSwaget_36 (A2), Bowtie_34 (A11), Bud_33 (A11), CRB1_35 (A2), Catalina_37 (A9), Changeling_36 (A2), Chartreuse_37 (A6), Conquerage_36 (A9), Cookiedough_37 (A6), Deloris_33 (A2), Dorothea_37 (A6), EZMoney23_36 (A2), EagleEye_38 (A16), Echild_34 (A2), Eidsmoe_36 (A9), Elephantoon_35 (A9), Epsocamisio_36 (A15), EricB_37 (A6), First_0033 (A2), Flaverint_34 (A11), ForesterFrank_36 (A2), Gladiator_37 (A6), Helmet_38 (A6), Horex_34 (A9), Hoot_37 (A6), HortumSL17_36 (A9), Hutc2_33 (A11), Indra_39 (A6), Isiphiwo_37 (A6), JSwag_36 (A15), Jabith_34 (A11), Jeeves_37 (A14), Jeffabunny_37 (A6), JewelBug_38 (A6), KatherineG_36 (A15), Keziacharles14_36 (A9), Koko_37 (A6), LastResort_36 (A15), Lilbunny_36 (A6), Lilleskat_33 (A9), Looper_37 (A15), Loser_37 (A2), Luchador_38 (A14), Lucyedi_37 (A16), Miko_37 (A2), Munch_34 (A11), Myxus_36 (A9), Nebulosus_36 (A15), Nedarya_35 (A15), Newrala_37 (A6), Oofda_36 (A15), PackMan_35 (A9), PainterBoy_37 (A16), Phaeder_36 (A9), Phlei_27 (A13), Pmask_37 (A6), Polyphemus_37 (A6), Priya_36 (A9), Rachaly_37 (A2), Rahalelujah_34 (A9), ReMo_36 (A15), RedRock_37 (A2), Refuge_38 (A12), Remus_36 (A15), Rifter_37 (A6), Rosalind_36 (A15), Sham4_33 (A11), ShayRa_37 (A15), Soups_36 (A15), Steamy_34 (A12), SuperAwesome_37 (A6), Temprado_37 (A6), Tubs_36 (A9), Vanisoa_35 (A9), Waits_36 (A15), Warrior24_36 (A15), Zulu_37 (A6),

Start 31:

- Found in 77 of 129 (59.7%) of genes in pham
- Manual Annotations of this start: 4 of 110
- Called 5.2% of time when present
- Phage (with cluster) where this start called: Et2Brutus_33 (A11), Fibonacci_33 (A11), Insomnia_34 (A11), TinyTimmy_34 (A11),

Summary by clusters:

There are 10 clusters represented in this pham: A15, A14, A17, A16, A11, A13, A12, A2, A6, A9,

Info for manual annotations of cluster A11:

- Start number 28 was manually annotated 8 times for cluster A11.
- Start number 31 was manually annotated 4 times for cluster A11.

Info for manual annotations of cluster A12:

- Start number 28 was manually annotated 2 times for cluster A12.

Info for manual annotations of cluster A14:

- Start number 26 was manually annotated 1 time for cluster A14.
- Start number 28 was manually annotated 2 times for cluster A14.

Info for manual annotations of cluster A15:

- Start number 27 was manually annotated 7 times for cluster A15.
- Start number 28 was manually annotated 16 times for cluster A15.

Info for manual annotations of cluster A16:

- Start number 28 was manually annotated 3 times for cluster A16.

Info for manual annotations of cluster A2:

- Start number 23 was manually annotated 1 time for cluster A2.
- Start number 27 was manually annotated 1 time for cluster A2.
- Start number 28 was manually annotated 10 times for cluster A2.

Info for manual annotations of cluster A6:

- Start number 12 was manually annotated 7 times for cluster A6.
- Start number 27 was manually annotated 1 time for cluster A6.
- Start number 28 was manually annotated 22 times for cluster A6.

Info for manual annotations of cluster A9:

- Start number 17 was manually annotated 9 times for cluster A9.
- Start number 28 was manually annotated 16 times for cluster A9.

Gene Information:

Gene: 20ES_33 Start: 26076, Stop: 26657, Start Num: 28

Candidate Starts for 20ES_33:

(Start: 28 @26076 has 79 MA's), (Start: 31 @26097 has 4 MA's), (32, 26115), (40, 26178), (41, 26181), (45, 26214), (65, 26358), (70, 26403), (73, 26430), (86, 26502), (102, 26640),

Gene: 40AC_38 Start: 28399, Stop: 28962, Start Num: 28

Candidate Starts for 40AC_38:

(19, 28351), (Start: 28 @28399 has 79 MA's), (29, 28405), (32, 28435), (33, 28456), (39, 28495), (41, 28501), (67, 28684), (82, 28789), (86, 28819), (92, 28852), (96, 28885), (97, 28906), (98, 28918), (101, 28951),

Gene: Aliter_36 Start: 26941, Stop: 27522, Start Num: 28

Candidate Starts for Aliter_36:

(Start: 17 @26896 has 9 MA's), (Start: 28 @26941 has 79 MA's), (Start: 31 @26962 has 4 MA's), (60, 27172), (68, 27241), (70, 27271), (73, 27298), (86, 27367), (102, 27505),

Gene: Alma_36 Start: 27061, Stop: 27642, Start Num: 28

Candidate Starts for Alma_36:

(Start: 17 @27016 has 9 MA's), (Start: 28 @27061 has 79 MA's), (Start: 31 @27082 has 4 MA's), (32, 27100), (45, 27199), (60, 27292), (68, 27361), (73, 27418), (86, 27487), (102, 27625),

Gene: Anaysia_36 Start: 24673, Stop: 25248, Start Num: 27

Candidate Starts for Anaysia_36:

(Start: 27 @24673 has 9 MA's), (Start: 28 @24682 has 79 MA's), (32, 24718), (33, 24739), (34, 24745), (41, 24784), (42, 24787), (51, 24841), (60, 24898), (77, 25039), (79, 25048), (80, 25051), (86, 25093), (92, 25126), (99, 25210), (101, 25228), (102, 25231),

Gene: Aneem_34 Start: 26120, Stop: 26698, Start Num: 28

Candidate Starts for Aneem_34:

(Start: 28 @26120 has 79 MA's), (Start: 31 @26138 has 4 MA's), (32, 26156), (33, 26177), (38, 26210), (40, 26219), (41, 26222), (46, 26261), (52, 26291), (57, 26327), (60, 26348), (67, 26414), (76, 26486), (79, 26498), (81, 26504), (83, 26531), (84, 26534), (88, 26552), (90, 26570), (92, 26576), (94, 26588), (97, 26630), (99, 26660), (102, 26681),

Gene: AnnaL29_37 Start: 27751, Stop: 28353, Start Num: 23

Candidate Starts for AnnaL29_37:

(Start: 23 @27751 has 1 MA's), (Start: 28 @27775 has 79 MA's), (32, 27811), (33, 27832), (38, 27865), (52, 27946), (60, 28003), (67, 28069), (70, 28102), (76, 28141), (81, 28159), (82, 28168), (83, 28186), (86, 28198), (90, 28225), (92, 28231), (97, 28285), (99, 28315), (102, 28336),

Gene: Anon_34 Start: 24634, Stop: 25200, Start Num: 28

Candidate Starts for Anon_34:

(Start: 28 @24634 has 79 MA's), (29, 24640), (33, 24691), (34, 24697), (41, 24736), (42, 24739), (53, 24808), (61, 24859), (63, 24889), (80, 25009), (92, 25084), (101, 25183),

Gene: ArcherNM_35 Start: 27722, Stop: 28297, Start Num: 28

Candidate Starts for ArcherNM_35:

(Start: 28 @27722 has 79 MA's), (Start: 31 @27740 has 4 MA's), (32, 27758), (34, 27785), (40, 27821), (41, 27824), (45, 27857), (73, 28073), (86, 28142), (102, 28280), (103, 28283),

Gene: Arissanae_36 Start: 27790, Stop: 28368, Start Num: 28

Candidate Starts for Arissanae_36:

(Start: 28 @27790 has 79 MA's), (32, 27826), (33, 27847), (47, 27934), (50, 27958), (52, 27961), (65, 28072), (67, 28084), (69, 28111), (71, 28126), (79, 28168), (82, 28183), (92, 28246), (94, 28258), (96, 28279), (97, 28300), (99, 28330), (102, 28351), (103, 28354),

Gene: BABullseye_37 Start: 25152, Stop: 25730, Start Num: 28

Candidate Starts for BABullseye_37:

(Start: 12 @25044 has 7 MA's), (Start: 17 @25107 has 9 MA's), (Start: 28 @25152 has 79 MA's), (Start: 31 @25170 has 4 MA's), (32, 25188), (33, 25209), (40, 25251), (41, 25254), (46, 25293), (52, 25323), (57, 25359), (60, 25380), (67, 25446), (71, 25488), (76, 25518), (79, 25530), (81, 25536), (82, 25545), (83, 25563), (84, 25566), (88, 25584), (90, 25602), (94, 25620), (97, 25662), (99, 25692), (102, 25713),

Gene: Battleship_37 Start: 24785, Stop: 25360, Start Num: 27

Candidate Starts for Battleship_37:

(Start: 27 @24785 has 9 MA's), (Start: 28 @24794 has 79 MA's), (32, 24830), (33, 24851), (34, 24857), (41, 24896), (42, 24899), (51, 24953), (60, 25010), (77, 25151), (79, 25160), (80, 25163), (86, 25205), (92, 25238), (99, 25322), (101, 25340), (102, 25343),

Gene: Bellris_33 Start: 26070, Stop: 26690, Start Num: 17

Candidate Starts for Bellris_33:

(13, 26031), (Start: 17 @26070 has 9 MA's), (Start: 27 @26106 has 9 MA's), (Start: 28 @26115 has 79 MA's), (Start: 31 @26133 has 4 MA's), (32, 26151), (41, 26217), (45, 26250), (68, 26409), (73, 26466), (89, 26547), (94, 26580), (102, 26673),

Gene: Benvolio_33 Start: 26067, Stop: 26642, Start Num: 28

Candidate Starts for Benvolio_33:

(Start: 28 @26067 has 79 MA's), (Start: 31 @26088 has 4 MA's), (32, 26106), (41, 26172), (45, 26205), (64, 26340), (68, 26361), (70, 26391), (76, 26430), (78, 26439), (79, 26442), (86, 26487), (97, 26574), (102, 26625),

Gene: Blinn1_38 Start: 25132, Stop: 25719, Start Num: 27

Candidate Starts for Blinn1_38:

(Start: 27 @25132 has 9 MA's), (Start: 28 @25141 has 79 MA's), (Start: 31 @25159 has 4 MA's), (32, 25177), (33, 25198), (40, 25240), (41, 25243), (46, 25282), (52, 25312), (57, 25348), (60, 25369), (67, 25435), (71, 25477), (76, 25507), (79, 25519), (81, 25525), (82, 25534), (83, 25552), (84, 25555), (88, 25573), (90, 25591), (92, 25597), (94, 25609), (97, 25651), (99, 25681), (102, 25702),

Gene: Blue7_38 Start: 25064, Stop: 25642, Start Num: 28

Candidate Starts for Blue7_38:

(Start: 12 @24956 has 7 MA's), (Start: 17 @25019 has 9 MA's), (Start: 28 @25064 has 79 MA's), (30, 25079), (32, 25100), (33, 25121), (40, 25163), (41, 25166), (46, 25205), (52, 25235), (57, 25271), (60, 25292), (67, 25358), (71, 25400), (76, 25430), (79, 25442), (81, 25448), (82, 25457), (83, 25475), (84, 25478), (88, 25496), (92, 25520), (94, 25532), (97, 25574), (99, 25604), (102, 25625),

Gene: BobSwaget_36 Start: 27033, Stop: 27614, Start Num: 28

Candidate Starts for BobSwaget_36:

(20, 27000), (Start: 28 @27033 has 79 MA's), (32, 27072), (33, 27093), (40, 27135), (47, 27180), (50, 27204), (60, 27264), (67, 27330), (69, 27357), (82, 27429), (92, 27492), (96, 27525), (97, 27546), (102, 27597), (103, 27600),

Gene: Boohoo_36 Start: 24673, Stop: 25248, Start Num: 27

Candidate Starts for Boohoo_36:

(Start: 27 @24673 has 9 MA's), (Start: 28 @24682 has 79 MA's), (32, 24718), (33, 24739), (34, 24745), (41, 24784), (42, 24787), (51, 24841), (60, 24898), (77, 25039), (79, 25048), (80, 25051), (86, 25093), (92, 25126), (99, 25210), (101, 25228), (102, 25231),

Gene: Bowtie_34 Start: 26120, Stop: 26698, Start Num: 28

Candidate Starts for Bowtie_34:

(Start: 28 @26120 has 79 MA's), (Start: 31 @26138 has 4 MA's), (32, 26156), (33, 26177), (38, 26210), (40, 26219), (41, 26222), (46, 26261), (52, 26291), (57, 26327), (60, 26348), (67, 26414), (76, 26486), (79, 26498), (81, 26504), (83, 26531), (84, 26534), (87, 26549), (88, 26552), (92, 26576), (94, 26588), (97, 26630), (99, 26660), (102, 26681),

Gene: Bud_33 Start: 25675, Stop: 26253, Start Num: 28

Candidate Starts for Bud_33:

(Start: 28 @25675 has 79 MA's), (Start: 31 @25693 has 4 MA's), (32, 25711), (33, 25732), (38, 25765), (40, 25774), (41, 25777), (46, 25816), (52, 25846), (57, 25882), (60, 25903), (67, 25969), (76, 26041), (79, 26053), (81, 26059), (83, 26086), (84, 26089), (87, 26104), (88, 26107), (92, 26131), (94, 26143), (97, 26185), (99, 26215), (102, 26236),

Gene: CRB1_35 Start: 26733, Stop: 27314, Start Num: 28

Candidate Starts for CRB1_35:

(1, 26433), (2, 26454), (7, 26529), (8, 26535), (15, 26655), (16, 26685), (Start: 28 @26733 has 79 MA's), (32, 26769), (33, 26790), (38, 26823), (52, 26904), (53, 26916), (57, 26940), (60, 26964), (67, 27030), (81, 27120), (82, 27129), (83, 27147), (86, 27159), (88, 27168), (90, 27186), (97, 27246), (102, 27297),

Gene: Catalina_37 Start: 27014, Stop: 27595, Start Num: 28

Candidate Starts for Catalina_37:

(Start: 17 @26969 has 9 MA's), (Start: 28 @27014 has 79 MA's), (Start: 31 @27035 has 4 MA's), (60, 27245), (68, 27314), (70, 27344), (73, 27371), (86, 27440), (102, 27578),

Gene: Changeling_36 Start: 27759, Stop: 28316, Start Num: 28

Candidate Starts for Changeling_36:

(Start: 28 @27759 has 79 MA's), (29, 27765), (30, 27774), (32, 27795), (38, 27849), (41, 27861), (53, 27927), (67, 28032), (69, 28059), (75, 28098), (79, 28116), (82, 28131), (90, 28188), (94, 28206), (97, 28248), (102, 28299),

Gene: Chartreuse_37 Start: 25021, Stop: 25599, Start Num: 28

Candidate Starts for Chartreuse_37:

(Start: 12 @24913 has 7 MA's), (Start: 17 @24976 has 9 MA's), (Start: 28 @25021 has 79 MA's), (Start: 31 @25039 has 4 MA's), (32, 25057), (33, 25078), (40, 25120), (41, 25123), (46, 25162), (52, 25192), (57, 25228), (60, 25249), (67, 25315), (71, 25357), (76, 25387), (79, 25399), (81, 25405), (82, 25414), (83, 25432), (84, 25435), (88, 25453), (90, 25471), (94, 25489), (97, 25531), (99, 25561), (102, 25582),

Gene: CogOmlette_33 Start: 26070, Stop: 26690, Start Num: 17

Candidate Starts for CogOmlette_33:

(13, 26031), (Start: 17 @26070 has 9 MA's), (Start: 27 @26106 has 9 MA's), (Start: 28 @26115 has 79 MA's), (Start: 31 @26133 has 4 MA's), (32, 26151), (41, 26217), (45, 26250), (68, 26409), (73, 26466), (89, 26547), (94, 26580), (102, 26673),

Gene: Conquerage_36 Start: 27043, Stop: 27624, Start Num: 28

Candidate Starts for Conquerage_36:

(Start: 17 @26998 has 9 MA's), (Start: 28 @27043 has 79 MA's), (Start: 31 @27064 has 4 MA's), (60, 27274), (68, 27343), (70, 27373), (73, 27400), (86, 27469), (102, 27607),

Gene: Cookiedough_37 Start: 25068, Stop: 25646, Start Num: 28

Candidate Starts for Cookiedough_37:

(Start: 12 @24960 has 7 MA's), (Start: 17 @25023 has 9 MA's), (Start: 28 @25068 has 79 MA's), (Start: 31 @25086 has 4 MA's), (32, 25104), (33, 25125), (40, 25167), (41, 25170), (46, 25209), (52, 25239), (57, 25275), (60, 25296), (67, 25362), (71, 25404), (76, 25434), (79, 25446), (81, 25452), (82, 25461), (83, 25479), (84, 25482), (88, 25500), (90, 25518), (94, 25536), (97, 25578), (99, 25608), (102, 25629),

Gene: Darrell_37 Start: 27413, Stop: 28033, Start Num: 17

Candidate Starts for Darrell_37:

(13, 27374), (Start: 17 @27413 has 9 MA's), (Start: 27 @27449 has 9 MA's), (Start: 28 @27458 has 79 MA's), (Start: 31 @27476 has 4 MA's), (32, 27494), (41, 27560), (45, 27593), (60, 27683), (73, 27809), (94, 27923), (102, 28016),

Gene: DekHockey33_36 Start: 24792, Stop: 25367, Start Num: 27

Candidate Starts for DekHockey33_36:

(Start: 27 @24792 has 9 MA's), (Start: 28 @24801 has 79 MA's), (32, 24837), (33, 24858), (34, 24864), (41, 24903), (42, 24906), (51, 24960), (60, 25017), (77, 25158), (79, 25167), (80, 25170), (86, 25212), (92, 25245), (99, 25329), (101, 25347), (102, 25350),

Gene: Deloris_33 Start: 26086, Stop: 26664, Start Num: 28

Candidate Starts for Deloris_33:

(Start: 28 @26086 has 79 MA's), (Start: 31 @26104 has 4 MA's), (32, 26122), (33, 26143), (37, 26170), (38, 26176), (41, 26188), (48, 26233), (57, 26293), (60, 26314), (67, 26380), (81, 26470), (82, 26479), (83, 26497), (90, 26536), (92, 26542), (94, 26554), (99, 26626), (102, 26647),

Gene: Dorothea_37 Start: 25075, Stop: 25653, Start Num: 28

Candidate Starts for Dorothea_37:

(Start: 12 @24967 has 7 MA's), (Start: 17 @25030 has 9 MA's), (Start: 28 @25075 has 79 MA's), (Start: 31 @25093 has 4 MA's), (32, 25111), (33, 25132), (40, 25174), (41, 25177), (46, 25216), (52, 25246), (57, 25282), (60, 25303), (67, 25369), (71, 25411), (76, 25441), (79, 25453), (81, 25459), (82, 25468), (83, 25486), (84, 25489), (88, 25507), (94, 25543), (97, 25585), (99, 25615), (102, 25636),

Gene: EZMoney23_36 Start: 27269, Stop: 27826, Start Num: 28

Candidate Starts for EZMoney23_36:

(Start: 28 @27269 has 79 MA's), (30, 27284), (Start: 31 @27287 has 4 MA's), (32, 27305), (39, 27365), (45, 27404), (53, 27437), (54, 27440), (66, 27539), (69, 27569), (75, 27608), (78, 27623), (82, 27641), (85, 27668), (90, 27698), (91, 27701), (92, 27704), (94, 27716), (97, 27758), (100, 27800), (102, 27809),

Gene: EagleEye_38 Start: 26541, Stop: 27119, Start Num: 28

Candidate Starts for EagleEye_38:

(Start: 27 @26532 has 9 MA's), (Start: 28 @26541 has 79 MA's), (32, 26577), (34, 26604), (40, 26640), (41, 26643), (53, 26724), (54, 26727), (60, 26766), (62, 26772), (70, 26865), (73, 26892), (74, 26898), (79, 26919), (82, 26934), (90, 26991), (92, 26997), (93, 27000), (94, 27009), (97, 27051), (98, 27063), (100, 27093), (102, 27102),

Gene: Echild_34 Start: 26075, Stop: 26632, Start Num: 28

Candidate Starts for Echild_34:

(Start: 28 @26075 has 79 MA's), (32, 26111), (34, 26138), (35, 26144), (41, 26177), (49, 26228), (51, 26234), (53, 26246), (60, 26291), (67, 26357), (90, 26519), (96, 26558), (97, 26579),

Gene: EdogawaKiddo_33 Start: 26975, Stop: 27601, Start Num: 17

Candidate Starts for EdogawaKiddo_33:

(Start: 17 @26975 has 9 MA's), (Start: 28 @27020 has 79 MA's), (Start: 31 @27041 has 4 MA's), (32, 27059), (45, 27158), (60, 27251), (68, 27320), (70, 27350), (73, 27377), (86, 27446), (102, 27584),

Gene: Eidsmoe_36 Start: 27077, Stop: 27658, Start Num: 28

Candidate Starts for Eidsmoe_36:

(Start: 17 @27032 has 9 MA's), (Start: 28 @27077 has 79 MA's), (Start: 31 @27098 has 4 MA's), (60, 27308), (68, 27377), (70, 27407), (73, 27434), (86, 27503), (102, 27641),

Gene: Elephantoon_35 Start: 26446, Stop: 27027, Start Num: 28

Candidate Starts for Elephantoon_35:

(Start: 17 @26401 has 9 MA's), (Start: 27 @26437 has 9 MA's), (Start: 28 @26446 has 79 MA's), (32, 26485), (41, 26551), (45, 26584), (60, 26677), (68, 26746), (73, 26803), (86, 26872), (102, 27010),

Gene: EmyBug_35 Start: 27034, Stop: 27660, Start Num: 17

Candidate Starts for EmyBug_35:

(Start: 17 @27034 has 9 MA's), (Start: 28 @27079 has 79 MA's), (Start: 31 @27100 has 4 MA's), (60, 27310), (68, 27379), (70, 27409), (73, 27436), (86, 27505), (102, 27643),

Gene: Epsocamisio_36 Start: 24680, Stop: 25246, Start Num: 28

Candidate Starts for Epsocamisio_36:

(Start: 27 @24671 has 9 MA's), (Start: 28 @24680 has 79 MA's), (32, 24716), (33, 24737), (34, 24743), (41, 24782), (42, 24785), (51, 24839), (60, 24896), (77, 25037), (79, 25046), (80, 25049), (86, 25091), (92, 25124), (99, 25208), (101, 25226), (102, 25229),

Gene: EricB_37 Start: 25067, Stop: 25645, Start Num: 28

Candidate Starts for EricB_37:

(Start: 12 @24959 has 7 MA's), (Start: 17 @25022 has 9 MA's), (Start: 28 @25067 has 79 MA's), (Start: 31 @25085 has 4 MA's), (32, 25103), (33, 25124), (40, 25166), (41, 25169), (46, 25208), (52, 25238), (57, 25274), (60, 25295), (67, 25361), (71, 25403), (76, 25433), (79, 25445), (81, 25451), (82, 25460), (83, 25478), (84, 25481), (88, 25499), (90, 25517), (94, 25535), (97, 25577), (99, 25607), (102, 25628),

Gene: Et2Brutus_33 Start: 26053, Stop: 26613, Start Num: 31

Candidate Starts for Et2Brutus_33:

(Start: 28 @26035 has 79 MA's), (Start: 31 @26053 has 4 MA's), (32, 26071), (33, 26092), (38, 26125), (40, 26134), (41, 26137), (46, 26176), (52, 26206), (60, 26263), (67, 26329), (76, 26401), (79, 26413), (81, 26419), (83, 26446), (84, 26449), (87, 26464), (88, 26467), (90, 26485), (92, 26491), (94, 26503), (97, 26545), (99, 26575), (102, 26596),

Gene: Fayely_36 Start: 27001, Stop: 27627, Start Num: 17

Candidate Starts for Fayely_36:

(Start: 17 @27001 has 9 MA's), (Start: 28 @27046 has 79 MA's), (Start: 31 @27067 has 4 MA's), (60, 27277), (68, 27346), (70, 27376), (73, 27403), (86, 27472), (102, 27610),

Gene: Fibonacci_33 Start: 25684, Stop: 26244, Start Num: 31

Candidate Starts for Fibonacci_33:

(Start: 28 @25666 has 79 MA's), (Start: 31 @25684 has 4 MA's), (32, 25702), (33, 25723), (38, 25756), (40, 25765), (41, 25768), (46, 25807), (52, 25837), (57, 25873), (60, 25894), (67, 25960), (76, 26032), (79, 26044), (81, 26050), (83, 26077), (84, 26080), (87, 26095), (88, 26098), (90, 26116), (92, 26122), (94, 26134), (97, 26176), (99, 26206), (102, 26227),

Gene: First_0033 Start: 26162, Stop: 26722, Start Num: 28

Candidate Starts for First_0033:

(Start: 28 @26162 has 79 MA's), (29, 26168), (30, 26177), (Start: 31 @26180 has 4 MA's), (32, 26198), (33, 26219), (34, 26225), (39, 26258), (41, 26264), (45, 26297), (53, 26330), (67, 26435), (69, 26462), (82, 26537), (90, 26594), (92, 26600), (94, 26612), (97, 26654), (100, 26696), (102, 26705),

Gene: Flaverint_34 Start: 26114, Stop: 26692, Start Num: 28

Candidate Starts for Flaverint_34:

(Start: 28 @26114 has 79 MA's), (Start: 31 @26132 has 4 MA's), (32, 26150), (33, 26171), (38, 26204), (40, 26213), (41, 26216), (46, 26255), (52, 26285), (57, 26321), (60, 26342), (67, 26408), (76, 26480), (79, 26492), (81, 26498), (83, 26525), (84, 26528), (87, 26543), (88, 26546), (90, 26564), (92, 26570),

(94, 26582), (97, 26624), (99, 26654), (102, 26675),

Gene: ForesterFrank_36 Start: 28004, Stop: 28585, Start Num: 28

Candidate Starts for ForesterFrank_36:

(Start: 28 @28004 has 79 MA's), (33, 28061), (40, 28103), (41, 28106), (53, 28187), (57, 28211), (62, 28241), (67, 28301), (79, 28385), (80, 28388), (81, 28391), (82, 28400), (83, 28418), (90, 28457), (94, 28475), (95, 28478), (99, 28547), (102, 28568),

Gene: Gail_38 Start: 27949, Stop: 28542, Start Num: 26

Candidate Starts for Gail_38:

(Start: 26 @27949 has 1 MA's), (Start: 28 @27964 has 79 MA's), (32, 28000), (33, 28021), (41, 28066), (43, 28087), (52, 28135), (53, 28147), (57, 28171), (59, 28189), (60, 28192), (62, 28198), (70, 28291), (81, 28348), (82, 28357), (83, 28375), (85, 28384), (90, 28414), (99, 28504), (102, 28525),

Gene: Gladiator_37 Start: 25063, Stop: 25641, Start Num: 28

Candidate Starts for Gladiator_37:

(Start: 12 @24955 has 7 MA's), (Start: 17 @25018 has 9 MA's), (Start: 28 @25063 has 79 MA's), (32, 25099), (33, 25120), (40, 25162), (41, 25165), (46, 25204), (52, 25234), (57, 25270), (60, 25291), (67, 25357), (71, 25399), (76, 25429), (79, 25441), (81, 25447), (82, 25456), (83, 25474), (84, 25477), (88, 25495), (90, 25513), (94, 25531), (97, 25573), (99, 25603), (102, 25624),

Gene: Hammer_37 Start: 24767, Stop: 25453, Start Num: 12

Candidate Starts for Hammer_37:

(Start: 12 @24767 has 7 MA's), (Start: 17 @24830 has 9 MA's), (Start: 28 @24875 has 79 MA's), (30, 24890), (32, 24911), (33, 24932), (40, 24974), (41, 24977), (46, 25016), (52, 25046), (57, 25082), (60, 25103), (67, 25169), (71, 25211), (76, 25241), (79, 25253), (81, 25259), (82, 25268), (83, 25286), (84, 25289), (88, 25307), (90, 25325), (92, 25331), (94, 25343), (97, 25385), (99, 25415), (102, 25436),

Gene: Hanray_34 Start: 26979, Stop: 27605, Start Num: 17

Candidate Starts for Hanray_34:

(Start: 17 @26979 has 9 MA's), (Start: 28 @27024 has 79 MA's), (Start: 31 @27045 has 4 MA's), (32, 27063), (45, 27162), (60, 27255), (68, 27324), (70, 27354), (73, 27381), (86, 27450), (102, 27588),

Gene: Helmet_38 Start: 25075, Stop: 25653, Start Num: 28

Candidate Starts for Helmet_38:

(Start: 12 @24967 has 7 MA's), (Start: 17 @25030 has 9 MA's), (Start: 28 @25075 has 79 MA's), (Start: 31 @25093 has 4 MA's), (32, 25111), (33, 25132), (40, 25174), (41, 25177), (46, 25216), (52, 25246), (57, 25282), (60, 25303), (67, 25369), (71, 25411), (76, 25441), (79, 25453), (81, 25459), (82, 25468), (83, 25486), (84, 25489), (88, 25507), (90, 25525), (94, 25543), (97, 25585), (99, 25615), (102, 25636),

Gene: Horex_34 Start: 27037, Stop: 27618, Start Num: 28

Candidate Starts for Horex_34:

(Start: 17 @26980 has 9 MA's), (Start: 28 @27037 has 79 MA's), (Start: 31 @27058 has 4 MA's), (32, 27076), (45, 27175), (60, 27268), (68, 27337), (70, 27367), (73, 27394), (86, 27463), (102, 27601),

Gene: Hoot_37 Start: 25052, Stop: 25630, Start Num: 28

Candidate Starts for Hoot_37:

(Start: 12 @24944 has 7 MA's), (Start: 17 @25007 has 9 MA's), (Start: 28 @25052 has 79 MA's), (Start: 31 @25070 has 4 MA's), (32, 25088), (33, 25109), (40, 25151), (41, 25154), (46, 25193), (52, 25223), (57, 25259), (60, 25280), (67, 25346), (71, 25388), (76, 25418), (79, 25430), (81, 25436), (82, 25445), (83, 25463), (84, 25466), (88, 25484), (90, 25502), (94, 25520), (97, 25562), (99, 25592), (102, 25613),

Gene: HortumSL17_36 Start: 27013, Stop: 27594, Start Num: 28

Candidate Starts for HortumSL17_36:

(Start: 17 @26968 has 9 MA's), (Start: 28 @27013 has 79 MA's), (Start: 31 @27034 has 4 MA's), (60, 27244), (68, 27313), (70, 27343), (73, 27370), (86, 27439), (102, 27577),

Gene: Hutc2_33 Start: 25667, Stop: 26245, Start Num: 28

Candidate Starts for Hutc2_33:

(Start: 28 @25667 has 79 MA's), (Start: 31 @25685 has 4 MA's), (32, 25703), (33, 25724), (38, 25757), (40, 25766), (41, 25769), (46, 25808), (52, 25838), (57, 25874), (60, 25895), (67, 25961), (76, 26033), (79, 26045), (81, 26051), (83, 26078), (84, 26081), (87, 26096), (88, 26099), (92, 26123), (94, 26135), (97, 26177), (99, 26207), (102, 26228),

Gene: Indra_39 Start: 25076, Stop: 25654, Start Num: 28

Candidate Starts for Indra_39:

(Start: 12 @24968 has 7 MA's), (Start: 17 @25031 has 9 MA's), (Start: 28 @25076 has 79 MA's), (Start: 31 @25094 has 4 MA's), (32, 25112), (33, 25133), (40, 25175), (41, 25178), (46, 25217), (52, 25247), (57, 25283), (60, 25304), (67, 25370), (71, 25412), (76, 25442), (79, 25454), (81, 25460), (82, 25469), (83, 25487), (84, 25490), (88, 25508), (90, 25526), (94, 25544), (97, 25586), (99, 25616), (102, 25637),

Gene: Insomnia_34 Start: 26190, Stop: 26750, Start Num: 31

Candidate Starts for Insomnia_34:

(Start: 28 @26172 has 79 MA's), (Start: 31 @26190 has 4 MA's), (32, 26208), (33, 26229), (38, 26262), (40, 26271), (41, 26274), (46, 26313), (52, 26343), (60, 26400), (67, 26466), (76, 26538), (79, 26550), (81, 26556), (83, 26583), (84, 26586), (87, 26601), (88, 26604), (92, 26628), (94, 26640), (97, 26682), (99, 26712), (102, 26733),

Gene: Isiphiwo_37 Start: 25146, Stop: 25724, Start Num: 28

Candidate Starts for Isiphiwo_37:

(Start: 12 @25038 has 7 MA's), (Start: 17 @25101 has 9 MA's), (Start: 28 @25146 has 79 MA's), (Start: 31 @25164 has 4 MA's), (32, 25182), (33, 25203), (40, 25245), (41, 25248), (46, 25287), (52, 25317), (57, 25353), (60, 25374), (67, 25440), (71, 25482), (76, 25512), (79, 25524), (81, 25530), (82, 25539), (83, 25557), (84, 25560), (88, 25578), (90, 25596), (94, 25614), (97, 25656), (99, 25686), (102, 25707),

Gene: JSwag_36 Start: 24665, Stop: 25231, Start Num: 28

Candidate Starts for JSwag_36:

(Start: 27 @24656 has 9 MA's), (Start: 28 @24665 has 79 MA's), (32, 24701), (33, 24722), (34, 24728), (41, 24767), (42, 24770), (51, 24824), (60, 24881), (77, 25022), (79, 25031), (80, 25034), (86, 25076), (92, 25109), (99, 25193), (101, 25211), (102, 25214),

Gene: Jabith_34 Start: 26172, Stop: 26750, Start Num: 28

Candidate Starts for Jabith_34:

(Start: 28 @26172 has 79 MA's), (Start: 31 @26190 has 4 MA's), (32, 26208), (33, 26229), (38, 26262), (40, 26271), (41, 26274), (46, 26313), (52, 26343), (57, 26379), (60, 26400), (67, 26466), (76, 26538), (79, 26550), (81, 26556), (83, 26583), (84, 26586), (88, 26604), (90, 26622), (92, 26628), (94, 26640), (97, 26682), (99, 26712), (102, 26733),

Gene: Jeeves_37 Start: 26658, Stop: 27236, Start Num: 28

Candidate Starts for Jeeves_37:

(18, 26631), (21, 26640), (Start: 28 @26658 has 79 MA's), (32, 26694), (33, 26715), (38, 26748), (53, 26841), (57, 26865), (67, 26952), (70, 26985), (76, 27024), (79, 27036), (81, 27042), (82, 27051), (83,

27069), (90, 27108), (99, 27198), (100, 27210), (102, 27219),

Gene: Jeffabunny_37 Start: 24873, Stop: 25451, Start Num: 28

Candidate Starts for Jeffabunny_37:

(Start: 12 @24765 has 7 MA's), (Start: 17 @24828 has 9 MA's), (Start: 27 @24864 has 9 MA's), (Start: 28 @24873 has 79 MA's), (Start: 31 @24891 has 4 MA's), (32, 24909), (33, 24930), (40, 24972), (41, 24975), (46, 25014), (52, 25044), (57, 25080), (60, 25101), (67, 25167), (71, 25209), (76, 25239), (79, 25251), (81, 25257), (82, 25266), (83, 25284), (84, 25287), (88, 25305), (90, 25323), (92, 25329), (94, 25341), (97, 25383), (99, 25413), (102, 25434),

Gene: JewelBug_38 Start: 25080, Stop: 25658, Start Num: 28

Candidate Starts for JewelBug_38:

(Start: 28 @25080 has 79 MA's), (Start: 31 @25098 has 4 MA's), (32, 25116), (33, 25137), (40, 25179), (41, 25182), (46, 25221), (52, 25251), (57, 25287), (60, 25308), (67, 25374), (71, 25416), (76, 25446), (79, 25458), (81, 25464), (82, 25473), (83, 25491), (84, 25494), (88, 25512), (90, 25530), (94, 25548), (97, 25590), (99, 25620), (102, 25641),

Gene: Jiawan_34 Start: 27011, Stop: 27637, Start Num: 17

Candidate Starts for Jiawan_34:

(Start: 17 @27011 has 9 MA's), (Start: 28 @27056 has 79 MA's), (Start: 31 @27077 has 4 MA's), (32, 27095), (45, 27194), (60, 27287), (68, 27356), (70, 27386), (73, 27413), (86, 27482), (102, 27620),

Gene: Jordennis_37 Start: 24956, Stop: 25642, Start Num: 12

Candidate Starts for Jordennis_37:

(Start: 12 @24956 has 7 MA's), (Start: 17 @25019 has 9 MA's), (Start: 28 @25064 has 79 MA's), (Start: 31 @25082 has 4 MA's), (32, 25100), (33, 25121), (40, 25163), (41, 25166), (46, 25205), (52, 25235), (57, 25271), (60, 25292), (67, 25358), (71, 25400), (76, 25430), (79, 25442), (81, 25448), (82, 25457), (83, 25475), (84, 25478), (88, 25496), (94, 25532), (97, 25574), (99, 25604), (102, 25625),

Gene: KatherineG_36 Start: 24801, Stop: 25367, Start Num: 28

Candidate Starts for KatherineG_36:

(Start: 27 @24792 has 9 MA's), (Start: 28 @24801 has 79 MA's), (32, 24837), (33, 24858), (34, 24864), (41, 24903), (42, 24906), (51, 24960), (60, 25017), (77, 25158), (79, 25167), (80, 25170), (86, 25212), (92, 25245), (99, 25329), (101, 25347), (102, 25350),

Gene: Kazan_38 Start: 24972, Stop: 25658, Start Num: 12

Candidate Starts for Kazan_38:

(Start: 12 @24972 has 7 MA's), (Start: 17 @25035 has 9 MA's), (Start: 28 @25080 has 79 MA's), (Start: 31 @25098 has 4 MA's), (32, 25116), (33, 25137), (40, 25179), (41, 25182), (46, 25221), (52, 25251), (57, 25287), (60, 25308), (67, 25374), (71, 25416), (76, 25446), (79, 25458), (81, 25464), (82, 25473), (83, 25491), (84, 25494), (88, 25512), (90, 25530), (94, 25548), (97, 25590), (99, 25620), (102, 25641),

Gene: Keziacharles14_36 Start: 27979, Stop: 28554, Start Num: 28

Candidate Starts for Keziacharles14_36:

(Start: 17 @27934 has 9 MA's), (Start: 27 @27970 has 9 MA's), (Start: 28 @27979 has 79 MA's), (Start: 31 @27997 has 4 MA's), (32, 28015), (41, 28081), (45, 28114), (68, 28273), (70, 28303), (73, 28330), (86, 28399), (102, 28537), (103, 28540),

Gene: Koko_37 Start: 25413, Stop: 25991, Start Num: 28

Candidate Starts for Koko_37:

(Start: 12 @25305 has 7 MA's), (Start: 17 @25368 has 9 MA's), (Start: 28 @25413 has 79 MA's), (Start: 31 @25431 has 4 MA's), (32, 25449), (33, 25470), (40, 25512), (41, 25515), (46, 25554), (52,

25584), (57, 25620), (60, 25641), (67, 25707), (71, 25749), (76, 25779), (79, 25791), (81, 25797), (82, 25806), (83, 25824), (84, 25827), (88, 25845), (90, 25863), (92, 25869), (94, 25881), (97, 25923), (99, 25953), (102, 25974),

Gene: LadyBird_35 Start: 26523, Stop: 27110, Start Num: 27

Candidate Starts for LadyBird_35:

(Start: 27 @26523 has 9 MA's), (Start: 28 @26532 has 79 MA's), (Start: 31 @26553 has 4 MA's), (32, 26571), (41, 26637), (45, 26670), (70, 26859), (97, 27042), (102, 27093),

Gene: LastResort_36 Start: 24682, Stop: 25248, Start Num: 28

Candidate Starts for LastResort_36:

(Start: 27 @24673 has 9 MA's), (Start: 28 @24682 has 79 MA's), (32, 24718), (33, 24739), (34, 24745), (41, 24784), (42, 24787), (51, 24841), (60, 24898), (77, 25039), (79, 25048), (80, 25051), (86, 25093), (92, 25126), (99, 25210), (101, 25228), (102, 25231),

Gene: Lilbunny_36 Start: 24847, Stop: 25425, Start Num: 28

Candidate Starts for Lilbunny_36:

(Start: 12 @24739 has 7 MA's), (Start: 17 @24802 has 9 MA's), (Start: 27 @24838 has 9 MA's), (Start: 28 @24847 has 79 MA's), (Start: 31 @24865 has 4 MA's), (32, 24883), (33, 24904), (40, 24946), (41, 24949), (46, 24988), (52, 25018), (57, 25054), (60, 25075), (67, 25141), (71, 25183), (76, 25213), (79, 25225), (81, 25231), (82, 25240), (83, 25258), (84, 25261), (88, 25279), (90, 25297), (94, 25315), (97, 25357), (99, 25387), (102, 25408),

Gene: Lilleskat_33 Start: 27032, Stop: 27613, Start Num: 28

Candidate Starts for Lilleskat_33:

(Start: 17 @26975 has 9 MA's), (Start: 28 @27032 has 79 MA's), (Start: 31 @27053 has 4 MA's), (32, 27071), (45, 27170), (60, 27263), (68, 27332), (70, 27362), (73, 27389), (86, 27458), (102, 27596),

Gene: LoneWolf_35 Start: 26563, Stop: 27189, Start Num: 17

Candidate Starts for LoneWolf_35:

(Start: 17 @26563 has 9 MA's), (Start: 27 @26599 has 9 MA's), (Start: 28 @26608 has 79 MA's), (Start: 31 @26629 has 4 MA's), (32, 26647), (41, 26713), (45, 26746), (60, 26839), (68, 26908), (73, 26965), (86, 27034), (102, 27172),

Gene: Looper_37 Start: 24679, Stop: 25245, Start Num: 28

Candidate Starts for Looper_37:

(Start: 27 @24670 has 9 MA's), (Start: 28 @24679 has 79 MA's), (32, 24715), (33, 24736), (34, 24742), (41, 24781), (42, 24784), (51, 24838), (60, 24895), (77, 25036), (79, 25045), (80, 25048), (86, 25090), (92, 25123), (99, 25207), (101, 25225), (102, 25228),

Gene: Loser_37 Start: 27695, Stop: 28273, Start Num: 28

Candidate Starts for Loser_37:

(Start: 17 @27650 has 9 MA's), (22, 27668), (24, 27674), (Start: 27 @27686 has 9 MA's), (Start: 28 @27695 has 79 MA's), (32, 27731), (33, 27752), (40, 27794), (41, 27797), (52, 27866), (53, 27878), (60, 27923), (67, 27989), (76, 28061), (81, 28079), (82, 28088), (83, 28106), (86, 28118), (90, 28145), (92, 28151), (97, 28205), (99, 28235), (102, 28256),

Gene: Luchador_38 Start: 28694, Stop: 29275, Start Num: 28

Candidate Starts for Luchador_38:

(4, 28466), (5, 28469), (10, 28529), (13, 28601), (20, 28661), (Start: 28 @28694 has 79 MA's), (32, 28733), (33, 28754), (40, 28796), (41, 28799), (50, 28865), (52, 28868), (59, 28922), (65, 28979), (67, 28991), (69, 29018), (72, 29045), (81, 29081), (82, 29090), (94, 29165), (97, 29207), (102, 29258), (103, 29261),

Gene: Lucyedi_37 Start: 26542, Stop: 27120, Start Num: 28

Candidate Starts for Lucyedi_37:

(Start: 27 @26533 has 9 MA's), (Start: 28 @26542 has 79 MA's), (32, 26578), (34, 26605), (40, 26641), (41, 26644), (53, 26725), (54, 26728), (60, 26767), (62, 26773), (70, 26866), (73, 26893), (74, 26899), (79, 26920), (82, 26935), (90, 26992), (92, 26998), (93, 27001), (94, 27010), (97, 27052), (98, 27064), (100, 27094), (102, 27103),

Gene: McFly_37 Start: 24966, Stop: 25652, Start Num: 12

Candidate Starts for McFly_37:

(Start: 12 @24966 has 7 MA's), (Start: 17 @25029 has 9 MA's), (Start: 28 @25074 has 79 MA's), (Start: 31 @25092 has 4 MA's), (32, 25110), (33, 25131), (40, 25173), (41, 25176), (46, 25215), (52, 25245), (57, 25281), (60, 25302), (67, 25368), (71, 25410), (76, 25440), (79, 25452), (81, 25458), (82, 25467), (83, 25485), (84, 25488), (88, 25506), (90, 25524), (94, 25542), (97, 25584), (99, 25614), (102, 25635),

Gene: Miko_37 Start: 27726, Stop: 28304, Start Num: 28

Candidate Starts for Miko_37:

(Start: 12 @27618 has 7 MA's), (Start: 28 @27726 has 79 MA's), (32, 27762), (33, 27783), (40, 27825), (41, 27828), (46, 27867), (53, 27909), (57, 27933), (60, 27954), (67, 28020), (68, 28023), (79, 28104), (81, 28110), (82, 28119), (83, 28137), (86, 28149), (90, 28176), (93, 28185), (94, 28194), (99, 28266), (102, 28287),

Gene: MinecraftSteve_37 Start: 24792, Stop: 25367, Start Num: 27

Candidate Starts for MinecraftSteve_37:

(Start: 27 @24792 has 9 MA's), (Start: 28 @24801 has 79 MA's), (32, 24837), (33, 24858), (34, 24864), (41, 24903), (42, 24906), (51, 24960), (60, 25017), (77, 25158), (79, 25167), (80, 25170), (86, 25212), (92, 25245), (99, 25329), (101, 25347), (102, 25350),

Gene: Minispark_33 Start: 26070, Stop: 26690, Start Num: 17

Candidate Starts for Minispark_33:

(13, 26031), (Start: 17 @26070 has 9 MA's), (Start: 27 @26106 has 9 MA's), (Start: 28 @26115 has 79 MA's), (Start: 31 @26133 has 4 MA's), (32, 26151), (41, 26217), (45, 26250), (68, 26409), (73, 26466), (94, 26580), (102, 26673),

Gene: Munch_34 Start: 26120, Stop: 26698, Start Num: 28

Candidate Starts for Munch_34:

(Start: 28 @26120 has 79 MA's), (Start: 31 @26138 has 4 MA's), (32, 26156), (33, 26177), (38, 26210), (40, 26219), (41, 26222), (46, 26261), (52, 26291), (57, 26327), (60, 26348), (67, 26414), (76, 26486), (79, 26498), (81, 26504), (83, 26531), (84, 26534), (88, 26552), (90, 26570), (92, 26576), (94, 26588), (97, 26630), (99, 26660), (102, 26681),

Gene: Myxus_36 Start: 27013, Stop: 27594, Start Num: 28

Candidate Starts for Myxus_36:

(Start: 17 @26968 has 9 MA's), (Start: 28 @27013 has 79 MA's), (Start: 31 @27034 has 4 MA's), (60, 27244), (68, 27313), (70, 27343), (73, 27370), (86, 27439), (102, 27577),

Gene: Nebulosus_36 Start: 24679, Stop: 25245, Start Num: 28

Candidate Starts for Nebulosus_36:

(Start: 27 @24670 has 9 MA's), (Start: 28 @24679 has 79 MA's), (32, 24715), (33, 24736), (34, 24742), (41, 24781), (42, 24784), (51, 24838), (60, 24895), (77, 25036), (79, 25045), (80, 25048), (86, 25090), (92, 25123), (99, 25207), (101, 25225), (102, 25228),

Gene: Nedarya_35 Start: 25262, Stop: 25837, Start Num: 28

Candidate Starts for Nedarya_35:

(Start: 28 @25262 has 79 MA's), (Start: 31 @25280 has 4 MA's), (32, 25298), (33, 25319), (41, 25364), (42, 25367), (44, 25394), (55, 25460), (58, 25475), (60, 25493), (64, 25541), (79, 25643), (81, 25649), (94, 25733), (102, 25826),

Gene: Newrala_37 Start: 25067, Stop: 25645, Start Num: 28

Candidate Starts for Newrala_37:

(Start: 12 @24959 has 7 MA's), (Start: 17 @25022 has 9 MA's), (Start: 28 @25067 has 79 MA's), (Start: 31 @25085 has 4 MA's), (32, 25103), (33, 25124), (40, 25166), (41, 25169), (46, 25208), (52, 25238), (57, 25274), (60, 25295), (67, 25361), (71, 25403), (76, 25433), (79, 25445), (81, 25451), (82, 25460), (83, 25478), (84, 25481), (88, 25499), (90, 25517), (94, 25535), (97, 25577), (99, 25607), (102, 25628),

Gene: Onglai_34 Start: 25309, Stop: 25935, Start Num: 17

Candidate Starts for Onglai_34:

(Start: 17 @25309 has 9 MA's), (Start: 28 @25354 has 79 MA's), (Start: 31 @25375 has 4 MA's), (32, 25393), (45, 25492), (60, 25585), (68, 25654), (70, 25684), (73, 25711), (86, 25780), (102, 25918),

Gene: Oofda_36 Start: 24653, Stop: 25219, Start Num: 28

Candidate Starts for Oofda_36:

(Start: 27 @24644 has 9 MA's), (Start: 28 @24653 has 79 MA's), (32, 24689), (33, 24710), (34, 24716), (41, 24755), (42, 24758), (51, 24812), (60, 24869), (77, 25010), (79, 25019), (86, 25064), (92, 25097), (99, 25181), (101, 25199), (102, 25202),

Gene: PackMan_35 Start: 27013, Stop: 27594, Start Num: 28

Candidate Starts for PackMan_35:

(Start: 17 @26968 has 9 MA's), (Start: 28 @27013 has 79 MA's), (Start: 31 @27034 has 4 MA's), (60, 27244), (68, 27313), (70, 27343), (73, 27370), (86, 27439), (102, 27577),

Gene: PainterBoy_37 Start: 26478, Stop: 27056, Start Num: 28

Candidate Starts for PainterBoy_37:

(Start: 27 @26469 has 9 MA's), (Start: 28 @26478 has 79 MA's), (32, 26514), (34, 26541), (40, 26577), (41, 26580), (53, 26661), (54, 26664), (60, 26703), (62, 26709), (70, 26802), (73, 26829), (74, 26835), (79, 26856), (82, 26871), (90, 26928), (92, 26934), (93, 26937), (94, 26946), (97, 26988), (98, 27000), (100, 27030), (102, 27039),

Gene: Phaeder_36 Start: 27013, Stop: 27594, Start Num: 28

Candidate Starts for Phaeder_36:

(Start: 17 @26968 has 9 MA's), (Start: 28 @27013 has 79 MA's), (Start: 31 @27034 has 4 MA's), (60, 27244), (68, 27313), (70, 27343), (73, 27370), (86, 27439), (102, 27577),

Gene: Phlei_27 Start: 26952, Stop: 27530, Start Num: 28

Candidate Starts for Phlei_27:

(25, 26934), (Start: 27 @26943 has 9 MA's), (Start: 28 @26952 has 79 MA's), (32, 26988), (33, 27009), (41, 27054), (45, 27087), (53, 27135), (59, 27174), (60, 27177), (62, 27183), (70, 27276), (71, 27285), (79, 27330), (82, 27345), (89, 27387), (92, 27408), (94, 27420), (99, 27492), (100, 27504), (102, 27513),

Gene: Pmask_37 Start: 25068, Stop: 25646, Start Num: 28

Candidate Starts for Pmask_37:

(Start: 12 @24960 has 7 MA's), (Start: 17 @25023 has 9 MA's), (Start: 28 @25068 has 79 MA's), (32, 25104), (33, 25125), (40, 25167), (41, 25170), (46, 25209), (52, 25239), (57, 25275), (60, 25296), (67,

25362), (71, 25404), (76, 25434), (79, 25446), (81, 25452), (82, 25461), (83, 25479), (84, 25482), (88, 25500), (90, 25518), (94, 25536), (97, 25578), (99, 25608), (102, 25629),

Gene: Polyphemus_37 Start: 25066, Stop: 25644, Start Num: 28

Candidate Starts for Polyphemus_37:

(Start: 12 @24958 has 7 MA's), (Start: 17 @25021 has 9 MA's), (Start: 28 @25066 has 79 MA's), (Start: 31 @25084 has 4 MA's), (32, 25102), (33, 25123), (40, 25165), (41, 25168), (46, 25207), (52, 25237), (57, 25273), (60, 25294), (67, 25360), (71, 25402), (76, 25432), (79, 25444), (81, 25450), (82, 25459), (83, 25477), (84, 25480), (88, 25498), (94, 25534), (97, 25576), (99, 25606), (102, 25627),

Gene: Priya_36 Start: 27080, Stop: 27661, Start Num: 28

Candidate Starts for Priya_36:

(Start: 17 @27035 has 9 MA's), (Start: 28 @27080 has 79 MA's), (Start: 31 @27101 has 4 MA's), (60, 27311), (68, 27380), (70, 27410), (73, 27437), (86, 27506), (102, 27644),

Gene: Prudy_36 Start: 27742, Stop: 28332, Start Num: 27

Candidate Starts for Prudy_36:

(Start: 27 @27742 has 9 MA's), (Start: 28 @27751 has 79 MA's), (32, 27790), (36, 27832), (39, 27850), (40, 27853), (41, 27856), (45, 27889), (53, 27937), (56, 27958), (62, 27985), (70, 28078), (78, 28129), (79, 28132), (81, 28138), (82, 28147), (83, 28165), (86, 28177), (92, 28210), (93, 28213), (94, 28222), (97, 28264), (102, 28315),

Gene: Qobbit_36 Start: 26997, Stop: 27623, Start Num: 17

Candidate Starts for Qobbit_36:

(Start: 17 @26997 has 9 MA's), (Start: 28 @27042 has 79 MA's), (Start: 31 @27063 has 4 MA's), (60, 27273), (68, 27342), (70, 27372), (73, 27399), (86, 27468), (102, 27606),

Gene: Rachaly_37 Start: 27592, Stop: 28170, Start Num: 28

Candidate Starts for Rachaly_37:

(9, 27427), (Start: 12 @27484 has 7 MA's), (Start: 28 @27592 has 79 MA's), (32, 27628), (33, 27649), (40, 27691), (41, 27694), (46, 27733), (53, 27775), (57, 27799), (60, 27820), (67, 27886), (68, 27889), (79, 27970), (81, 27976), (82, 27985), (83, 28003), (86, 28015), (90, 28042), (93, 28051), (94, 28060), (99, 28132), (102, 28153),

Gene: Rahalelujah_34 Start: 26115, Stop: 26690, Start Num: 28

Candidate Starts for Rahalelujah_34:

(13, 26031), (Start: 17 @26070 has 9 MA's), (Start: 27 @26106 has 9 MA's), (Start: 28 @26115 has 79 MA's), (Start: 31 @26133 has 4 MA's), (32, 26151), (41, 26217), (45, 26250), (68, 26409), (73, 26466), (89, 26547), (102, 26673),

Gene: Ravana_37 Start: 24634, Stop: 25209, Start Num: 27

Candidate Starts for Ravana_37:

(Start: 27 @24634 has 9 MA's), (Start: 28 @24643 has 79 MA's), (32, 24679), (33, 24700), (34, 24706), (41, 24745), (42, 24748), (51, 24802), (60, 24859), (77, 25000), (79, 25009), (80, 25012), (86, 25054), (92, 25087), (99, 25171), (101, 25189), (102, 25192),

Gene: ReMo_36 Start: 24679, Stop: 25245, Start Num: 28

Candidate Starts for ReMo_36:

(Start: 27 @24670 has 9 MA's), (Start: 28 @24679 has 79 MA's), (32, 24715), (33, 24736), (34, 24742), (41, 24781), (42, 24784), (51, 24838), (60, 24895), (77, 25036), (79, 25045), (80, 25048), (86, 25090), (92, 25123), (99, 25207), (101, 25225), (102, 25228),

Gene: RedRock_37 Start: 27898, Stop: 28455, Start Num: 28

Candidate Starts for RedRock_37:

(Start: 28 @27898 has 79 MA's), (29, 27904), (30, 27913), (38, 27988), (39, 27994), (41, 28000), (53, 28066), (67, 28171), (69, 28198), (75, 28237), (79, 28255), (82, 28270), (90, 28327), (94, 28345), (97, 28387), (102, 28438),

Gene: Refuge_38 Start: 28887, Stop: 29447, Start Num: 28

Candidate Starts for Refuge_38:

(3, 28611), (6, 28662), (Start: 28 @28887 has 79 MA's), (32, 28923), (33, 28944), (34, 28950), (38, 28977), (41, 28989), (47, 29031), (51, 29049), (53, 29061), (60, 29109), (64, 29157), (79, 29259), (82, 29274), (86, 29304), (96, 29370), (97, 29391), (99, 29421), (100, 29433), (101, 29436), (102, 29439),

Gene: Remus_36 Start: 24643, Stop: 25209, Start Num: 28

Candidate Starts for Remus_36:

(Start: 27 @24634 has 9 MA's), (Start: 28 @24643 has 79 MA's), (32, 24679), (33, 24700), (34, 24706), (41, 24745), (42, 24748), (51, 24802), (60, 24859), (77, 25000), (79, 25009), (80, 25012), (86, 25054), (92, 25087), (99, 25171), (101, 25189), (102, 25192),

Gene: Rifter_37 Start: 24837, Stop: 25415, Start Num: 28

Candidate Starts for Rifter_37:

(Start: 12 @24729 has 7 MA's), (Start: 17 @24792 has 9 MA's), (Start: 28 @24837 has 79 MA's), (30, 24852), (32, 24873), (33, 24894), (40, 24936), (41, 24939), (46, 24978), (52, 25008), (57, 25044), (60, 25065), (67, 25131), (71, 25173), (76, 25203), (79, 25215), (81, 25221), (82, 25230), (83, 25248), (84, 25251), (88, 25269), (90, 25287), (92, 25293), (94, 25305), (97, 25347), (99, 25377), (102, 25398),

Gene: Roksolana_38 Start: 24980, Stop: 25666, Start Num: 12

Candidate Starts for Roksolana_38:

(Start: 12 @24980 has 7 MA's), (Start: 17 @25043 has 9 MA's), (Start: 28 @25088 has 79 MA's), (Start: 31 @25106 has 4 MA's), (32, 25124), (33, 25145), (40, 25187), (41, 25190), (46, 25229), (52, 25259), (57, 25295), (60, 25316), (67, 25382), (71, 25424), (76, 25454), (79, 25466), (81, 25472), (82, 25481), (83, 25499), (84, 25502), (88, 25520), (90, 25538), (92, 25544), (94, 25556), (97, 25598), (99, 25628), (102, 25649),

Gene: Rosalind_36 Start: 24801, Stop: 25367, Start Num: 28

Candidate Starts for Rosalind_36:

(Start: 27 @24792 has 9 MA's), (Start: 28 @24801 has 79 MA's), (32, 24837), (33, 24858), (34, 24864), (41, 24903), (42, 24906), (51, 24960), (60, 25017), (77, 25158), (79, 25167), (80, 25170), (86, 25212), (92, 25245), (99, 25329), (101, 25347), (102, 25350),

Gene: Scherzo_35 Start: 26980, Stop: 27606, Start Num: 17

Candidate Starts for Scherzo_35:

(Start: 17 @26980 has 9 MA's), (Start: 28 @27025 has 79 MA's), (Start: 31 @27046 has 4 MA's), (60, 27256), (68, 27325), (70, 27355), (73, 27382), (86, 27451), (102, 27589),

Gene: Sham4_33 Start: 25667, Stop: 26245, Start Num: 28

Candidate Starts for Sham4_33:

(Start: 28 @25667 has 79 MA's), (Start: 31 @25685 has 4 MA's), (32, 25703), (33, 25724), (38, 25757), (40, 25766), (41, 25769), (46, 25808), (52, 25838), (57, 25874), (60, 25895), (67, 25961), (76, 26033), (79, 26045), (81, 26051), (83, 26078), (84, 26081), (87, 26096), (88, 26099), (90, 26117), (92, 26123), (94, 26135), (97, 26177), (99, 26207), (102, 26228),

Gene: ShayRa_37 Start: 24801, Stop: 25367, Start Num: 28

Candidate Starts for ShayRa_37:

(Start: 27 @24792 has 9 MA's), (Start: 28 @24801 has 79 MA's), (32, 24837), (33, 24858), (34, 24864), (41, 24903), (42, 24906), (51, 24960), (60, 25017), (77, 25158), (79, 25167), (80, 25170), (86, 25212), (92, 25245), (99, 25329), (101, 25347), (102, 25350),

Gene: Soups_36 Start: 24801, Stop: 25367, Start Num: 28

Candidate Starts for Soups_36:

(Start: 27 @24792 has 9 MA's), (Start: 28 @24801 has 79 MA's), (32, 24837), (33, 24858), (34, 24864), (41, 24903), (42, 24906), (51, 24960), (60, 25017), (77, 25158), (79, 25167), (80, 25170), (86, 25212), (92, 25245), (99, 25329), (101, 25347), (102, 25350),

Gene: Spouty_36 Start: 27034, Stop: 27660, Start Num: 17

Candidate Starts for Spouty_36:

(Start: 17 @27034 has 9 MA's), (Start: 28 @27079 has 79 MA's), (Start: 31 @27100 has 4 MA's), (60, 27310), (68, 27379), (70, 27409), (73, 27436), (86, 27505), (102, 27643),

Gene: Steamy_34 Start: 26828, Stop: 27385, Start Num: 28

Candidate Starts for Steamy_34:

(Start: 28 @26828 has 79 MA's), (30, 26843), (Start: 31 @26846 has 4 MA's), (32, 26864), (39, 26924), (41, 26930), (42, 26933), (54, 26999), (69, 27128), (75, 27167), (78, 27182), (90, 27257), (92, 27263), (94, 27275), (102, 27368),

Gene: Strosahl_36 Start: 24634, Stop: 25209, Start Num: 27

Candidate Starts for Strosahl_36:

(Start: 27 @24634 has 9 MA's), (Start: 28 @24643 has 79 MA's), (32, 24679), (33, 24700), (34, 24706), (41, 24745), (42, 24748), (51, 24802), (60, 24859), (77, 25000), (79, 25009), (80, 25012), (86, 25054), (92, 25087), (99, 25171), (101, 25189), (102, 25192),

Gene: SuperAwesome_37 Start: 25067, Stop: 25645, Start Num: 28

Candidate Starts for SuperAwesome_37:

(Start: 12 @24959 has 7 MA's), (Start: 17 @25022 has 9 MA's), (Start: 28 @25067 has 79 MA's), (32, 25103), (33, 25124), (40, 25166), (41, 25169), (46, 25208), (52, 25238), (57, 25274), (60, 25295), (67, 25361), (71, 25403), (76, 25433), (79, 25445), (81, 25451), (82, 25460), (83, 25478), (84, 25481), (88, 25499), (90, 25517), (94, 25535), (97, 25577), (99, 25607), (102, 25628),

Gene: Switzerland_36 Start: 24786, Stop: 25361, Start Num: 27

Candidate Starts for Switzerland_36:

(Start: 27 @24786 has 9 MA's), (Start: 28 @24795 has 79 MA's), (32, 24831), (33, 24852), (34, 24858), (41, 24897), (42, 24900), (51, 24954), (60, 25011), (77, 25152), (79, 25161), (80, 25164), (86, 25206), (92, 25239), (99, 25323), (101, 25341), (102, 25344),

Gene: Temprado_37 Start: 25075, Stop: 25653, Start Num: 28

Candidate Starts for Temprado_37:

(Start: 12 @24967 has 7 MA's), (Start: 17 @25030 has 9 MA's), (Start: 28 @25075 has 79 MA's), (Start: 31 @25093 has 4 MA's), (32, 25111), (33, 25132), (40, 25174), (41, 25177), (46, 25216), (52, 25246), (57, 25282), (60, 25303), (67, 25369), (71, 25411), (76, 25441), (79, 25453), (81, 25459), (82, 25468), (83, 25486), (84, 25489), (88, 25507), (90, 25525), (94, 25543), (97, 25585), (99, 25615), (102, 25636),

Gene: TinyTimmy_34 Start: 26087, Stop: 26647, Start Num: 31

Candidate Starts for TinyTimmy_34:

(Start: 28 @26069 has 79 MA's), (Start: 31 @26087 has 4 MA's), (32, 26105), (33, 26126), (38, 26159), (40, 26168), (41, 26171), (46, 26210), (52, 26240), (60, 26297), (67, 26363), (76, 26435), (79, 26447), (81, 26453), (83, 26480), (84, 26483), (87, 26498), (88, 26501), (90, 26519), (92, 26525), (94, 26537),

(97, 26579), (99, 26609), (102, 26630),

Gene: Toaka_34 Start: 26261, Stop: 26884, Start Num: 17

Candidate Starts for Toaka_34:

(11, 26147), (Start: 17 @26261 has 9 MA's), (Start: 28 @26306 has 79 MA's), (Start: 31 @26327 has 4 MA's), (32, 26345), (41, 26411), (45, 26444), (68, 26603), (73, 26660), (86, 26729), (102, 26867),

Gene: Tubs_36 Start: 27013, Stop: 27594, Start Num: 28

Candidate Starts for Tubs_36:

(Start: 17 @26968 has 9 MA's), (Start: 28 @27013 has 79 MA's), (Start: 31 @27034 has 4 MA's), (60, 27244), (68, 27313), (70, 27343), (73, 27370), (86, 27439), (102, 27577),

Gene: Ugenie5_32 Start: 26979, Stop: 27605, Start Num: 17

Candidate Starts for Ugenie5_32:

(Start: 17 @26979 has 9 MA's), (Start: 28 @27024 has 79 MA's), (Start: 31 @27045 has 4 MA's), (60, 27255), (68, 27324), (70, 27354), (73, 27381), (86, 27450), (102, 27588),

Gene: Vanisoa_35 Start: 27553, Stop: 28128, Start Num: 28

Candidate Starts for Vanisoa_35:

(14, 27469), (Start: 17 @27508 has 9 MA's), (Start: 28 @27553 has 79 MA's), (Start: 31 @27571 has 4 MA's), (32, 27589), (41, 27655), (45, 27688), (68, 27847), (73, 27904), (86, 27973), (102, 28111), (103, 28114),

Gene: VohminGhazi_37 Start: 24966, Stop: 25652, Start Num: 12

Candidate Starts for VohminGhazi_37:

(Start: 12 @24966 has 7 MA's), (Start: 17 @25029 has 9 MA's), (Start: 28 @25074 has 79 MA's), (Start: 31 @25092 has 4 MA's), (32, 25110), (33, 25131), (40, 25173), (41, 25176), (46, 25215), (52, 25245), (57, 25281), (60, 25302), (67, 25368), (71, 25410), (76, 25440), (79, 25452), (81, 25458), (82, 25467), (83, 25485), (84, 25488), (88, 25506), (90, 25524), (94, 25542), (97, 25584), (99, 25614), (102, 25635),

Gene: Waits_36 Start: 24649, Stop: 25215, Start Num: 28

Candidate Starts for Waits_36:

(Start: 27 @24640 has 9 MA's), (Start: 28 @24649 has 79 MA's), (32, 24685), (33, 24706), (34, 24712), (41, 24751), (42, 24754), (51, 24808), (60, 24865), (77, 25006), (79, 25015), (80, 25018), (86, 25060), (92, 25093), (99, 25177), (101, 25195), (102, 25198),

Gene: Warrior24_36 Start: 24641, Stop: 25207, Start Num: 28

Candidate Starts for Warrior24_36:

(Start: 27 @24632 has 9 MA's), (Start: 28 @24641 has 79 MA's), (32, 24677), (33, 24698), (34, 24704), (41, 24743), (42, 24746), (51, 24800), (60, 24857), (77, 24998), (79, 25007), (80, 25010), (86, 25052), (92, 25085), (99, 25169), (101, 25187), (102, 25190),

Gene: WorldCup_33 Start: 26031, Stop: 26690, Start Num: 13

Candidate Starts for WorldCup_33:

(13, 26031), (Start: 17 @26070 has 9 MA's), (Start: 27 @26106 has 9 MA's), (Start: 28 @26115 has 79 MA's), (Start: 31 @26133 has 4 MA's), (32, 26151), (41, 26217), (45, 26250), (68, 26409), (73, 26466), (94, 26580), (102, 26673),

Gene: WunderPhul_37 Start: 24737, Stop: 25423, Start Num: 12

Candidate Starts for WunderPhul_37:

(Start: 12 @24737 has 7 MA's), (Start: 17 @24800 has 9 MA's), (Start: 28 @24845 has 79 MA's), (30, 24860), (32, 24881), (33, 24902), (40, 24944), (41, 24947), (46, 24986), (52, 25016), (57, 25052), (60,

25073), (67, 25139), (71, 25181), (76, 25211), (79, 25223), (81, 25229), (82, 25238), (83, 25256), (84, 25259), (88, 25277), (90, 25295), (94, 25313), (97, 25355), (99, 25385), (102, 25406),

Gene: Zulu_37 Start: 24846, Stop: 25424, Start Num: 28

Candidate Starts for Zulu_37:

(Start: 12 @24738 has 7 MA's), (Start: 17 @24801 has 9 MA's), (Start: 27 @24837 has 9 MA's), (Start: 28 @24846 has 79 MA's), (Start: 31 @24864 has 4 MA's), (32, 24882), (33, 24903), (40, 24945), (41, 24948), (46, 24987), (52, 25017), (57, 25053), (60, 25074), (67, 25140), (71, 25182), (76, 25212), (79, 25224), (81, 25230), (82, 25239), (83, 25257), (84, 25260), (88, 25278), (90, 25296), (94, 25314), (97, 25356), (99, 25386), (102, 25407),