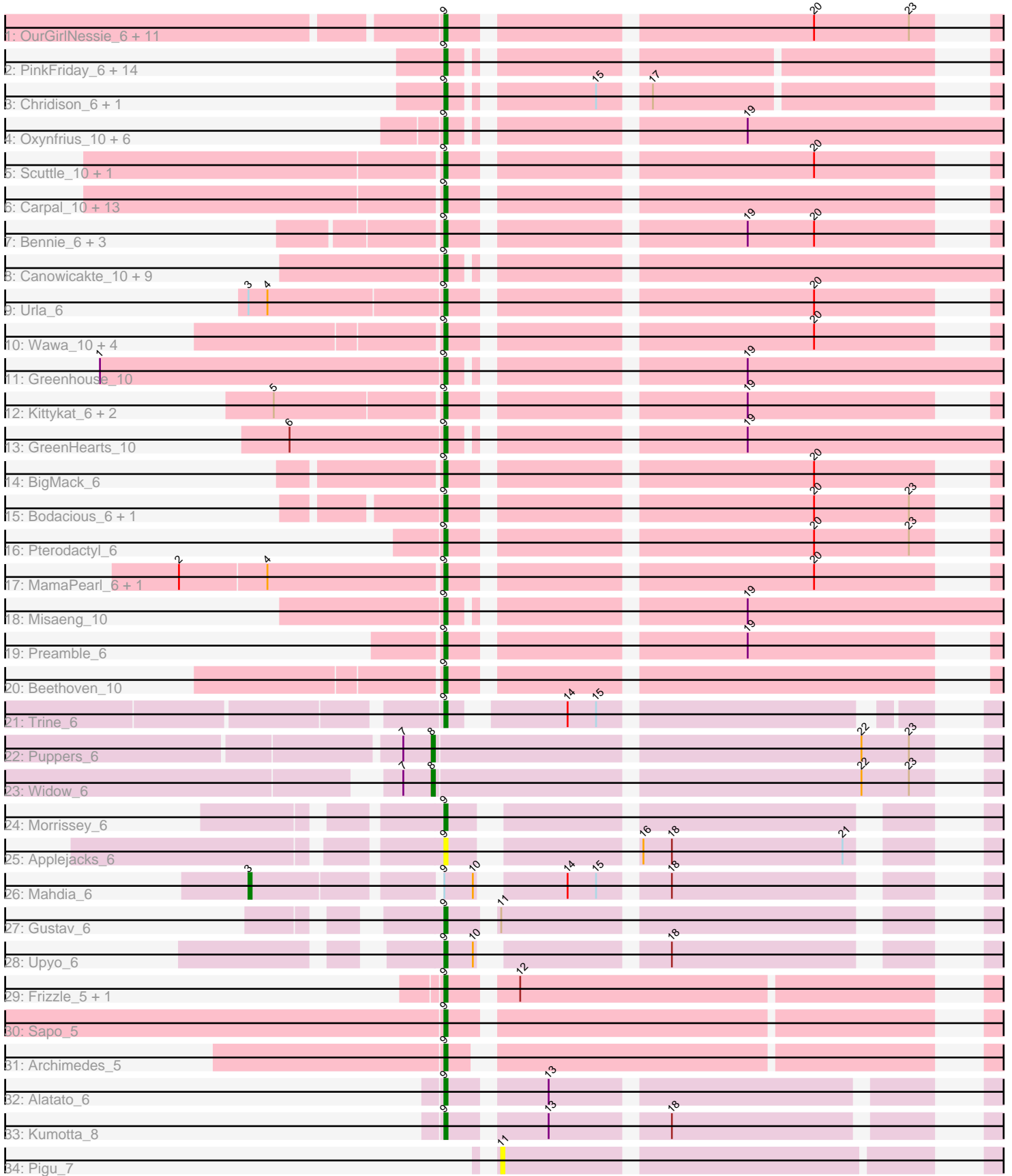


Pham 294592



Note: Tracks are now grouped by subcluster and scaled. Switching in subcluster is indicated by changes in track color. Track scale is now set by default to display the region 30 bp upstream of start 1 to 30 bp downstream of the last possible start. If this default region is judged to be packed too tightly with annotated starts, the track will be further scaled to only show that region of the ORF with annotated starts. This action will be indicated by adding "Zoomed" to the title. For starts, yellow indicates the location of called starts comprised solely of Glimmer/GeneMark auto-annotations, green indicates the location of called starts with at least 1 manual gene annotation.

Pham 294592 Report

This analysis was run 04/18/26 on database version 643.

Pham number 294592 has 101 members, 4 are drafts.

Phages represented in each track:

- Track 1 : OurGirlNessie_6, DrRobert_6, Lennox_6, Christian_6, Nancia_6, Makoto_6, Lucy_6, PitaDog_6, WonderBoy_6, CristinaYang_6, LilStuart_6, Lasagna_6
- Track 2 : PinkFriday_6, Maria1952_6, Temper16_6, Vulture_6, OMalley_6, Eunoia_6, KingBob_6, Pumancara_6, HunterDalle_6, Sergej_6, Aledel_6, Supakev_6, Daiboju_6, Riovina_6, Herb_6
- Track 3 : Chridison_6, AustinPowers_6
- Track 4 : Oxynfrius_10, Lakshmi_10, Albanese_10, Joann_10, RcigaStruga_10, Huntingdon_10, Nubia_10
- Track 5 : Scuttle_10, BrotherBLo_10
- Track 6 : Carpal_10, RAP15_10, Potatoes_10, Cholula_10, Fluke_10, Glenn_10, Jumboset_10, Savage2526_10, Rozby_10, TattModd_10, MrGloopy_10, Riverdale_10, Immaculata_10, MeganNoll_10
- Track 7 : Bennie_6, HeadNerd_6, Moki_6, Huckleberry_6
- Track 8 : Canowicakte_10, Suppi_10, Wayne_10, Vallejo_10, Litotes_10, PartyCup_10, Graynor_10, MrBoss_10, CallieOMalley_10, AppleCider_10
- Track 9 : Urla_6
- Track 10 : Wawa_10, Korra_10, Dino_10, Kalizoi_10, Zorro_10
- Track 11 : Greenhouse_10
- Track 12 : Kittykat_6, Gisselle_6, DreamTeam_6
- Track 13 : GreenHearts_10
- Track 14 : BigMack_6
- Track 15 : Bodacious_6, ChewChew_6
- Track 16 : Pterodactyl_6
- Track 17 : MamaPearl_6, EstebanJulior_6
- Track 18 : Misaeng_10
- Track 19 : Preamble_6
- Track 20 : Beethoven_10
- Track 21 : Trine_6
- Track 22 : Puppies_6
- Track 23 : Widow_6
- Track 24 : Morrissey_6
- Track 25 : Applejacks_6
- Track 26 : Mahdia_6
- Track 27 : Gustav_6
- Track 28 : Upyo_6
- Track 29 : Frizzle_5, Ghobes_5

- Track 30 : Sapo_5
- Track 31 : Archimedes_5
- Track 32 : Alatato_6
- Track 33 : Kumotta_8
- Track 34 : Pigu_7

Summary of Final Annotations (See graph section above for start numbers):

The start number called the most often in the published annotations is 9, it was called in 94 of the 97 non-draft genes in the pham.

Genes that call this "Most Annotated" start:

- Alatato_6, Albanese_10, Aledel_6, AppleCider_10, Applejacks_6, Archimedes_5, AustinPowers_6, Beethoven_10, Bennie_6, BigMack_6, Bodacious_6, BrotherBLo_10, CallieOMalley_10, Canowicakte_10, Carpal_10, ChewChew_6, Cholula_10, Chridison_6, Christian_6, CristinaYang_6, Daiboju_6, Dino_10, DrRobert_6, DreamTeam_6, EstebanJulior_6, Eunoia_6, Fluke_10, Frizzle_5, Ghobes_5, Gisselle_6, Glenn_10, Graynor_10, GreenHearts_10, Greenhouse_10, Gustav_6, HeadNerd_6, Herb_6, Huckleberry_6, HunterDalle_6, Huntingdon_10, Immaculata_10, Joann_10, Jumboset_10, Kalizoi_10, KingBob_6, Kittykat_6, Korra_10, Kumotta_8, Lakshmi_10, Lasagna_6, Lennox_6, LilStuart_6, Litotes_10, Lucy_6, Makoto_6, MamaPearl_6, Maria1952_6, MeganNoll_10, Misaeng_10, Moki_6, Morrissey_6, MrBoss_10, MrGloopy_10, Nancia_6, Nubia_10, OMalley_6, OurGirlNessie_6, Oxynfrius_10, PartyCup_10, PinkFriday_6, PitaDog_6, Potatoes_10, Preamble_6, Pterodactyl_6, Pumancara_6, RAP15_10, RcigaStruga_10, Riovina_6, Riverdale_10, Rozby_10, Sapo_5, Savage2526_10, Scuttle_10, Sergei_6, Supakev_6, Suppi_10, TattModd_10, Temper16_6, Trine_6, Upyo_6, Urla_6, Vallejo_10, Vulture_6, Wawa_10, Wayne_10, WonderBoy_6, Zorro_10,

Genes that have the "Most Annotated" start but do not call it:

- Mahdia_6,

Genes that do not have the "Most Annotated" start:

- Pigu_7, Puppies_6, Widow_6,

Summary by start number:

Start 3:

- Found in 2 of 101 (2.0%) of genes in pham
- Manual Annotations of this start: 1 of 97
- Called 50.0% of time when present
- Phage (with cluster) where this start called: Mahdia_6 (CD),

Start 8:

- Found in 2 of 101 (2.0%) of genes in pham
- Manual Annotations of this start: 2 of 97
- Called 100.0% of time when present
- Phage (with cluster) where this start called: Puppies_6 (CD), Widow_6 (CD),

Start 9:

- Found in 98 of 101 (97.0%) of genes in pham
- Manual Annotations of this start: 94 of 97
- Called 99.0% of time when present
- Phage (with cluster) where this start called: Alatato_6 (FB), Albanese_10 (AK), Aledel_6 (AK), AppleCider_10 (AK), Applejacks_6 (CD), Archimedes_5 (DA), AustinPowers_6 (AK), Beethoven_10 (AK), Bennie_6 (AK), BigMack_6 (AK), Bodacious_6 (AK), BrotherBLo_10 (AK), CallieOMalley_10 (AK), Canowicakte_10 (AK), Carpal_10 (AK), ChewChew_6 (AK), Cholula_10 (AK), Chridison_6 (AK), Christian_6 (AK), CristinaYang_6 (AK), Daiboju_6 (AK), Dino_10 (AK), DrRobert_6 (AK), DreamTeam_6 (AK), EstebanJulior_6 (AK), Eunoia_6 (AK), Fluke_10 (AK), Frizzle_5 (DA), Ghobes_5 (DA), Gisselle_6 (AK), Glenn_10 (AK), Graynor_10 (AK), GreenHearts_10 (AK), Greenhouse_10 (AK), Gustav_6 (CD), HeadNerd_6 (AK), Herb_6 (AK), Huckleberry_6 (AK), HunterDalle_6 (AK), Huntingdon_10 (AK), Immaculata_10 (AK), Joann_10 (AK), Jumboset_10 (AK), Kalizoi_10 (AK), KingBob_6 (AK), Kittykat_6 (AK), Korra_10 (AK), Kumotta_8 (FB), Lakshmi_10 (AK), Lasagna_6 (AK), Lennox_6 (AK), LilStuart_6 (AK), Litotes_10 (AK), Lucy_6 (AK), Makoto_6 (AK), MamaPearl_6 (AK), Maria1952_6 (AK), MeganNoll_10 (AK), Misaeng_10 (AK), Moki_6 (AK), Morrissey_6 (CD), MrBoss_10 (AK), MrGloopy_10 (AK), Nancia_6 (AK), Nubia_10 (AK), OMalley_6 (AK), OurGirlNessie_6 (AK), Oxynfrius_10 (AK), PartyCup_10 (AK), PinkFriday_6 (AK), PitaDog_6 (AK), Potatoes_10 (AK), Preamble_6 (AK), Pterodactyl_6 (AK), Pumancara_6 (AK), RAP15_10 (AK), RcigaStruga_10 (AK), Riovina_6 (AK), Riverdale_10 (AK), Rozby_10 (AK), Sapo_5 (DA), Savage2526_10 (AK), Scuttle_10 (AK), Sergei_6 (AK), Supakev_6 (AK), Suppi_10 (AK), TattModd_10 (AK), Temper16_6 (AK), Trine_6 (CD), Upyo_6 (CD), Urla_6 (AK), Vallejo_10 (AK), Vulture_6 (AK), Wawa_10 (AK), Wayne_10 (AK), WonderBoy_6 (AK), Zorro_10 (AK),

Start 11:

- Found in 2 of 101 (2.0%) of genes in pham
- No Manual Annotations of this start.
- Called 50.0% of time when present
- Phage (with cluster) where this start called: Pigu_7 (FB),

Summary by clusters:

There are 4 clusters represented in this pham: AK, DA, FB, CD,

Info for manual annotations of cluster AK:

- Start number 9 was manually annotated 84 times for cluster AK.

Info for manual annotations of cluster CD:

- Start number 3 was manually annotated 1 time for cluster CD.
- Start number 8 was manually annotated 2 times for cluster CD.
- Start number 9 was manually annotated 4 times for cluster CD.

Info for manual annotations of cluster DA:

- Start number 9 was manually annotated 4 times for cluster DA.

Info for manual annotations of cluster FB:

- Start number 9 was manually annotated 2 times for cluster FB.

Gene Information:

Gene: Alatato_6 Start: 5818, Stop: 5973, Start Num: 9
Candidate Starts for Alatato_6:
(Start: 9 @5818 has 94 MA's), (13, 5845),

Gene: Albanese_10 Start: 9061, Stop: 9255, Start Num: 9
Candidate Starts for Albanese_10:
(Start: 9 @9061 has 94 MA's), (19, 9142),

Gene: Aledel_6 Start: 6159, Stop: 6332, Start Num: 9
Candidate Starts for Aledel_6:
(Start: 9 @6159 has 94 MA's),

Gene: AppleCider_10 Start: 9015, Stop: 9209, Start Num: 9
Candidate Starts for AppleCider_10:
(Start: 9 @9015 has 94 MA's),

Gene: Applejacks_6 Start: 5826, Stop: 5984, Start Num: 9
Candidate Starts for Applejacks_6:
(Start: 9 @5826 has 94 MA's), (16, 5874), (18, 5883), (21, 5937),

Gene: Archimedes_5 Start: 5220, Stop: 5387, Start Num: 9
Candidate Starts for Archimedes_5:
(Start: 9 @5220 has 94 MA's),

Gene: AustinPowers_6 Start: 6160, Stop: 6333, Start Num: 9
Candidate Starts for AustinPowers_6:
(Start: 9 @6160 has 94 MA's), (15, 6199), (17, 6211),

Gene: Beethoven_10 Start: 8995, Stop: 9174, Start Num: 9
Candidate Starts for Beethoven_10:
(Start: 9 @8995 has 94 MA's),

Gene: Bennie_6 Start: 6140, Stop: 6319, Start Num: 9
Candidate Starts for Bennie_6:
(Start: 9 @6140 has 94 MA's), (19, 6224), (20, 6245),

Gene: BigMack_6 Start: 6140, Stop: 6319, Start Num: 9
Candidate Starts for BigMack_6:
(Start: 9 @6140 has 94 MA's), (20, 6245),

Gene: Bodacious_6 Start: 6138, Stop: 6317, Start Num: 9
Candidate Starts for Bodacious_6:
(Start: 9 @6138 has 94 MA's), (20, 6243), (23, 6273),

Gene: BrotherBLo_10 Start: 9002, Stop: 9181, Start Num: 9
Candidate Starts for BrotherBLo_10:
(Start: 9 @9002 has 94 MA's), (20, 9107),

Gene: CallieOMalley_10 Start: 9015, Stop: 9209, Start Num: 9
Candidate Starts for CallieOMalley_10:
(Start: 9 @9015 has 94 MA's),

Gene: Canowicakte_10 Start: 9050, Stop: 9244, Start Num: 9
Candidate Starts for Canowicakte_10:
(Start: 9 @9050 has 94 MA's),

Gene: Carpal_10 Start: 9002, Stop: 9181, Start Num: 9
Candidate Starts for Carpal_10:
(Start: 9 @9002 has 94 MA's),

Gene: ChewChew_6 Start: 6137, Stop: 6316, Start Num: 9
Candidate Starts for ChewChew_6:
(Start: 9 @6137 has 94 MA's), (20, 6242), (23, 6272),

Gene: Cholula_10 Start: 9047, Stop: 9226, Start Num: 9
Candidate Starts for Cholula_10:
(Start: 9 @9047 has 94 MA's),

Gene: Chridison_6 Start: 6160, Stop: 6333, Start Num: 9
Candidate Starts for Chridison_6:
(Start: 9 @6160 has 94 MA's), (15, 6199), (17, 6211),

Gene: Christian_6 Start: 6138, Stop: 6317, Start Num: 9
Candidate Starts for Christian_6:
(Start: 9 @6138 has 94 MA's), (20, 6243), (23, 6273),

Gene: CristinaYang_6 Start: 6138, Stop: 6317, Start Num: 9
Candidate Starts for CristinaYang_6:
(Start: 9 @6138 has 94 MA's), (20, 6243), (23, 6273),

Gene: Daiboju_6 Start: 6161, Stop: 6334, Start Num: 9
Candidate Starts for Daiboju_6:
(Start: 9 @6161 has 94 MA's),

Gene: Dino_10 Start: 9001, Stop: 9180, Start Num: 9
Candidate Starts for Dino_10:
(Start: 9 @9001 has 94 MA's), (20, 9106),

Gene: DrRobert_6 Start: 6138, Stop: 6317, Start Num: 9
Candidate Starts for DrRobert_6:
(Start: 9 @6138 has 94 MA's), (20, 6243), (23, 6273),

Gene: DreamTeam_6 Start: 6184, Stop: 6363, Start Num: 9
Candidate Starts for DreamTeam_6:
(5, 6133), (Start: 9 @6184 has 94 MA's), (19, 6268),

Gene: EstebanJulior_6 Start: 6182, Stop: 6361, Start Num: 9
Candidate Starts for EstebanJulior_6:
(2, 6101), (4, 6128), (Start: 9 @6182 has 94 MA's), (20, 6287),

Gene: Eunoia_6 Start: 6159, Stop: 6332, Start Num: 9
Candidate Starts for Eunoia_6:
(Start: 9 @6159 has 94 MA's),

Gene: Fluke_10 Start: 9043, Stop: 9222, Start Num: 9
Candidate Starts for Fluke_10:
(Start: 9 @9043 has 94 MA's),

Gene: Frizzle_5 Start: 5267, Stop: 5443, Start Num: 9
Candidate Starts for Frizzle_5:
(Start: 9 @5267 has 94 MA's), (12, 5285),

Gene: Ghobes_5 Start: 5267, Stop: 5443, Start Num: 9
Candidate Starts for Ghobes_5:
(Start: 9 @5267 has 94 MA's), (12, 5285),

Gene: Gisselle_6 Start: 6184, Stop: 6363, Start Num: 9
Candidate Starts for Gisselle_6:
(5, 6133), (Start: 9 @6184 has 94 MA's), (19, 6268),

Gene: Glenn_10 Start: 9053, Stop: 9232, Start Num: 9
Candidate Starts for Glenn_10:
(Start: 9 @9053 has 94 MA's),

Gene: Graynor_10 Start: 9039, Stop: 9233, Start Num: 9
Candidate Starts for Graynor_10:
(Start: 9 @9039 has 94 MA's),

Gene: GreenHearts_10 Start: 9107, Stop: 9301, Start Num: 9
Candidate Starts for GreenHearts_10:
(6, 9059), (Start: 9 @9107 has 94 MA's), (19, 9188),

Gene: Greenhouse_10 Start: 9032, Stop: 9226, Start Num: 9
Candidate Starts for Greenhouse_10:
(1, 8924), (Start: 9 @9032 has 94 MA's), (19, 9113),

Gene: Gustav_6 Start: 5862, Stop: 6029, Start Num: 9
Candidate Starts for Gustav_6:
(Start: 9 @5862 has 94 MA's), (11, 5874),

Gene: HeadNerd_6 Start: 6140, Stop: 6319, Start Num: 9
Candidate Starts for HeadNerd_6:
(Start: 9 @6140 has 94 MA's), (19, 6224), (20, 6245),

Gene: Herb_6 Start: 6161, Stop: 6334, Start Num: 9
Candidate Starts for Herb_6:
(Start: 9 @6161 has 94 MA's),

Gene: Huckleberry_6 Start: 6140, Stop: 6319, Start Num: 9
Candidate Starts for Huckleberry_6:
(Start: 9 @6140 has 94 MA's), (19, 6224), (20, 6245),

Gene: HunterDalle_6 Start: 6159, Stop: 6332, Start Num: 9
Candidate Starts for HunterDalle_6:
(Start: 9 @6159 has 94 MA's),

Gene: Huntingdon_10 Start: 9018, Stop: 9212, Start Num: 9

Candidate Starts for Huntingdon_10:
(Start: 9 @9018 has 94 MA's), (19, 9099),

Gene: Immaculata_10 Start: 9047, Stop: 9226, Start Num: 9
Candidate Starts for Immaculata_10:
(Start: 9 @9047 has 94 MA's),

Gene: Joann_10 Start: 9010, Stop: 9204, Start Num: 9
Candidate Starts for Joann_10:
(Start: 9 @9010 has 94 MA's), (19, 9091),

Gene: Jumboset_10 Start: 8996, Stop: 9175, Start Num: 9
Candidate Starts for Jumboset_10:
(Start: 9 @8996 has 94 MA's),

Gene: Kalizoi_10 Start: 8995, Stop: 9174, Start Num: 9
Candidate Starts for Kalizoi_10:
(Start: 9 @8995 has 94 MA's), (20, 9100),

Gene: KingBob_6 Start: 6161, Stop: 6334, Start Num: 9
Candidate Starts for KingBob_6:
(Start: 9 @6161 has 94 MA's),

Gene: Kittykat_6 Start: 6181, Stop: 6360, Start Num: 9
Candidate Starts for Kittykat_6:
(5, 6130), (Start: 9 @6181 has 94 MA's), (19, 6265),

Gene: Korra_10 Start: 9001, Stop: 9180, Start Num: 9
Candidate Starts for Korra_10:
(Start: 9 @9001 has 94 MA's), (20, 9106),

Gene: Kumotta_8 Start: 7171, Stop: 7326, Start Num: 9
Candidate Starts for Kumotta_8:
(Start: 9 @7171 has 94 MA's), (13, 7198), (18, 7231),

Gene: Lakshmi_10 Start: 9037, Stop: 9231, Start Num: 9
Candidate Starts for Lakshmi_10:
(Start: 9 @9037 has 94 MA's), (19, 9118),

Gene: Lasagna_6 Start: 6138, Stop: 6317, Start Num: 9
Candidate Starts for Lasagna_6:
(Start: 9 @6138 has 94 MA's), (20, 6243), (23, 6273),

Gene: Lennox_6 Start: 6138, Stop: 6317, Start Num: 9
Candidate Starts for Lennox_6:
(Start: 9 @6138 has 94 MA's), (20, 6243), (23, 6273),

Gene: LilStuart_6 Start: 6138, Stop: 6317, Start Num: 9
Candidate Starts for LilStuart_6:
(Start: 9 @6138 has 94 MA's), (20, 6243), (23, 6273),

Gene: Litotes_10 Start: 9003, Stop: 9197, Start Num: 9
Candidate Starts for Litotes_10:

(Start: 9 @9003 has 94 MA's),

Gene: Lucy_6 Start: 6129, Stop: 6308, Start Num: 9

Candidate Starts for Lucy_6:

(Start: 9 @6129 has 94 MA's), (20, 6234), (23, 6264),

Gene: Mahdia_6 Start: 5826, Stop: 6041, Start Num: 3

Candidate Starts for Mahdia_6:

(Start: 3 @5826 has 1 MA's), (Start: 9 @5880 has 94 MA's), (10, 5889), (14, 5910), (15, 5919), (18, 5937),

Gene: Makoto_6 Start: 6138, Stop: 6317, Start Num: 9

Candidate Starts for Makoto_6:

(Start: 9 @6138 has 94 MA's), (20, 6243), (23, 6273),

Gene: MamaPearl_6 Start: 6182, Stop: 6361, Start Num: 9

Candidate Starts for MamaPearl_6:

(2, 6101), (4, 6128), (Start: 9 @6182 has 94 MA's), (20, 6287),

Gene: Maria1952_6 Start: 6161, Stop: 6334, Start Num: 9

Candidate Starts for Maria1952_6:

(Start: 9 @6161 has 94 MA's),

Gene: MeganNoll_10 Start: 9053, Stop: 9232, Start Num: 9

Candidate Starts for MeganNoll_10:

(Start: 9 @9053 has 94 MA's),

Gene: Misaeng_10 Start: 9083, Stop: 9277, Start Num: 9

Candidate Starts for Misaeng_10:

(Start: 9 @9083 has 94 MA's), (19, 9164),

Gene: Moki_6 Start: 6140, Stop: 6319, Start Num: 9

Candidate Starts for Moki_6:

(Start: 9 @6140 has 94 MA's), (19, 6224), (20, 6245),

Gene: Morrissey_6 Start: 5871, Stop: 6029, Start Num: 9

Candidate Starts for Morrissey_6:

(Start: 9 @5871 has 94 MA's),

Gene: MrBoss_10 Start: 9003, Stop: 9197, Start Num: 9

Candidate Starts for MrBoss_10:

(Start: 9 @9003 has 94 MA's),

Gene: MrGloopy_10 Start: 8986, Stop: 9165, Start Num: 9

Candidate Starts for MrGloopy_10:

(Start: 9 @8986 has 94 MA's),

Gene: Nancia_6 Start: 6138, Stop: 6317, Start Num: 9

Candidate Starts for Nancia_6:

(Start: 9 @6138 has 94 MA's), (20, 6243), (23, 6273),

Gene: Nubia_10 Start: 8997, Stop: 9191, Start Num: 9

Candidate Starts for Nubia_10:

(Start: 9 @8997 has 94 MA's), (19, 9078),

Gene: OMalley_6 Start: 6159, Stop: 6332, Start Num: 9

Candidate Starts for OMalley_6:

(Start: 9 @6159 has 94 MA's),

Gene: OurGirlNessie_6 Start: 6129, Stop: 6308, Start Num: 9

Candidate Starts for OurGirlNessie_6:

(Start: 9 @6129 has 94 MA's), (20, 6234), (23, 6264),

Gene: Oxynfrius_10 Start: 9010, Stop: 9204, Start Num: 9

Candidate Starts for Oxynfrius_10:

(Start: 9 @9010 has 94 MA's), (19, 9091),

Gene: PartyCup_10 Start: 9050, Stop: 9244, Start Num: 9

Candidate Starts for PartyCup_10:

(Start: 9 @9050 has 94 MA's),

Gene: Pigu_7 Start: 5789, Stop: 5935, Start Num: 11

Candidate Starts for Pigu_7:

(11, 5789),

Gene: PinkFriday_6 Start: 6162, Stop: 6335, Start Num: 9

Candidate Starts for PinkFriday_6:

(Start: 9 @6162 has 94 MA's),

Gene: PitaDog_6 Start: 6129, Stop: 6308, Start Num: 9

Candidate Starts for PitaDog_6:

(Start: 9 @6129 has 94 MA's), (20, 6234), (23, 6264),

Gene: Potatoes_10 Start: 9047, Stop: 9226, Start Num: 9

Candidate Starts for Potatoes_10:

(Start: 9 @9047 has 94 MA's),

Gene: Preamble_6 Start: 6139, Stop: 6318, Start Num: 9

Candidate Starts for Preamble_6:

(Start: 9 @6139 has 94 MA's), (19, 6223),

Gene: Pterodactyl_6 Start: 6130, Stop: 6309, Start Num: 9

Candidate Starts for Pterodactyl_6:

(Start: 9 @6130 has 94 MA's), (20, 6235), (23, 6265),

Gene: Pumancara_6 Start: 6161, Stop: 6334, Start Num: 9

Candidate Starts for Pumancara_6:

(Start: 9 @6161 has 94 MA's),

Gene: Puppies_6 Start: 5783, Stop: 5965, Start Num: 8

Candidate Starts for Puppies_6:

(7, 5774), (Start: 8 @5783 has 2 MA's), (22, 5912), (23, 5927),

Gene: RAP15_10 Start: 9053, Stop: 9232, Start Num: 9

Candidate Starts for RAP15_10:

(Start: 9 @9053 has 94 MA's),

Gene: RcigaStruga_10 Start: 9018, Stop: 9212, Start Num: 9
Candidate Starts for RcigaStruga_10:
(Start: 9 @9018 has 94 MA's), (19, 9099),

Gene: Riovina_6 Start: 6159, Stop: 6332, Start Num: 9
Candidate Starts for Riovina_6:
(Start: 9 @6159 has 94 MA's),

Gene: Riverdale_10 Start: 8984, Stop: 9163, Start Num: 9
Candidate Starts for Riverdale_10:
(Start: 9 @8984 has 94 MA's),

Gene: Rozby_10 Start: 8984, Stop: 9163, Start Num: 9
Candidate Starts for Rozby_10:
(Start: 9 @8984 has 94 MA's),

Gene: Sapo_5 Start: 5262, Stop: 5438, Start Num: 9
Candidate Starts for Sapo_5:
(Start: 9 @5262 has 94 MA's),

Gene: Savage2526_10 Start: 9047, Stop: 9226, Start Num: 9
Candidate Starts for Savage2526_10:
(Start: 9 @9047 has 94 MA's),

Gene: Scuttle_10 Start: 9053, Stop: 9232, Start Num: 9
Candidate Starts for Scuttle_10:
(Start: 9 @9053 has 94 MA's), (20, 9158),

Gene: Sergei_6 Start: 6161, Stop: 6334, Start Num: 9
Candidate Starts for Sergei_6:
(Start: 9 @6161 has 94 MA's),

Gene: Supakev_6 Start: 6161, Stop: 6334, Start Num: 9
Candidate Starts for Supakev_6:
(Start: 9 @6161 has 94 MA's),

Gene: Suppi_10 Start: 9050, Stop: 9244, Start Num: 9
Candidate Starts for Suppi_10:
(Start: 9 @9050 has 94 MA's),

Gene: TattModd_10 Start: 9047, Stop: 9226, Start Num: 9
Candidate Starts for TattModd_10:
(Start: 9 @9047 has 94 MA's),

Gene: Temper16_6 Start: 6161, Stop: 6334, Start Num: 9
Candidate Starts for Temper16_6:
(Start: 9 @6161 has 94 MA's),

Gene: Trine_6 Start: 5823, Stop: 5981, Start Num: 9
Candidate Starts for Trine_6:
(Start: 9 @5823 has 94 MA's), (14, 5853), (15, 5862),

Gene: Upyo_6 Start: 5831, Stop: 5995, Start Num: 9
Candidate Starts for Upyo_6:
(Start: 9 @5831 has 94 MA's), (10, 5840), (18, 5888),

Gene: Urla_6 Start: 6185, Stop: 6364, Start Num: 9
Candidate Starts for Urla_6:
(Start: 3 @6125 has 1 MA's), (4, 6131), (Start: 9 @6185 has 94 MA's), (20, 6290),

Gene: Vallejo_10 Start: 8985, Stop: 9164, Start Num: 9
Candidate Starts for Vallejo_10:
(Start: 9 @8985 has 94 MA's),

Gene: Vulture_6 Start: 6159, Stop: 6332, Start Num: 9
Candidate Starts for Vulture_6:
(Start: 9 @6159 has 94 MA's),

Gene: Wawa_10 Start: 9022, Stop: 9201, Start Num: 9
Candidate Starts for Wawa_10:
(Start: 9 @9022 has 94 MA's), (20, 9127),

Gene: Wayne_10 Start: 9096, Stop: 9290, Start Num: 9
Candidate Starts for Wayne_10:
(Start: 9 @9096 has 94 MA's),

Gene: Widow_6 Start: 5774, Stop: 5956, Start Num: 8
Candidate Starts for Widow_6:
(7, 5765), (Start: 8 @5774 has 2 MA's), (22, 5903), (23, 5918),

Gene: WonderBoy_6 Start: 6138, Stop: 6317, Start Num: 9
Candidate Starts for WonderBoy_6:
(Start: 9 @6138 has 94 MA's), (20, 6243), (23, 6273),

Gene: Zorro_10 Start: 9001, Stop: 9180, Start Num: 9
Candidate Starts for Zorro_10:
(Start: 9 @9001 has 94 MA's), (20, 9106),