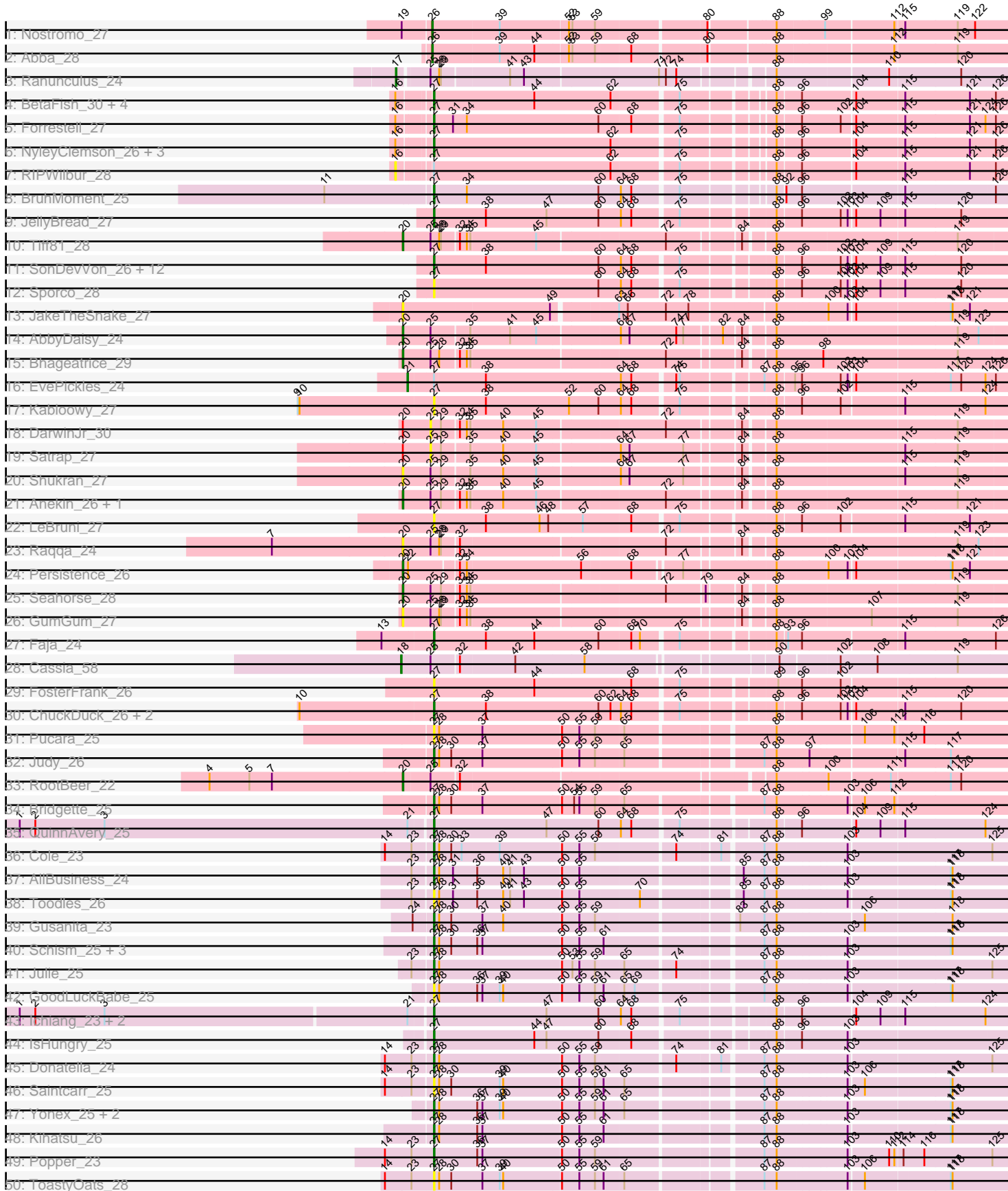
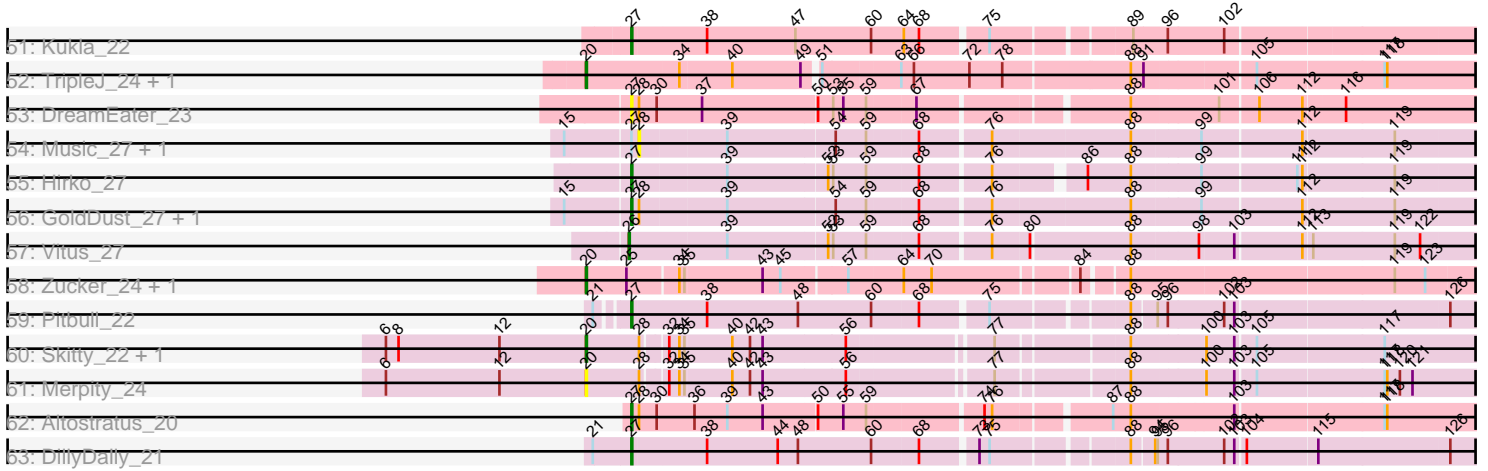


Pham 294602



Pham 294602



Note: Tracks are now grouped by subcluster and scaled. Switching in subcluster is indicated by changes in track color. Track scale is now set by default to display the region 30 bp upstream of start 1 to 30 bp downstream of the last possible start. If this default region is judged to be packed too tightly with annotated starts, the track will be further scaled to only show that region of the ORF with annotated starts. This action will be indicated by adding "Zoomed" to the title. For starts, yellow indicates the location of called starts comprised solely of Glimmer/GeneMark auto-annotations, green indicates the location of called starts with at least 1 manual gene annotation.

Pham 294602 Report

This analysis was run 04/18/26 on database version 643.

Pham number 294602 has 97 members, 34 are drafts.

Phages represented in each track:

- Track 1 : Nostromo_27
- Track 2 : Abba_28
- Track 3 : Ranunculus_24
- Track 4 : BetaFish_30, Beagle_31, RazzB_26, PhuzzTulsa_28, Pureglobe5_32
- Track 5 : Forrestell_27
- Track 6 : NyleyClemson_26, Hive_30, MellowYellow_27, Kubulix_31
- Track 7 : RIPWilbur_28
- Track 8 : BruhMoment_25
- Track 9 : JellyBread_27
- Track 10 : Tiff81_28
- Track 11 : SonDevVon_26, Vopal_28, Phrank15_26, MUWow_26, Raphaella_27, Sakai_27, NewKitty_28, AdaS_27, BillyTP_27, Mapleville_27, Lawnathon_27, Gorpy_27, Isolde_27
- Track 12 : Sporco_28
- Track 13 : JakeTheSnake_27
- Track 14 : AbbyDaisy_24
- Track 15 : Bhageatrice_29
- Track 16 : EvePickles_24
- Track 17 : Kabloowy_27
- Track 18 : DarwinJr_30
- Track 19 : Satrap_27
- Track 20 : Shukran_27
- Track 21 : Anekin_26, Crescenzo_27
- Track 22 : LeBruni_27
- Track 23 : Raqqa_24
- Track 24 : Persistence_26
- Track 25 : Seahorse_28
- Track 26 : GumGum_27
- Track 27 : Faja_24
- Track 28 : Cassia_58
- Track 29 : FosterFrank_26
- Track 30 : ChuckDuck_26, KayMoney_26, LittleRon_26
- Track 31 : Pucara_25
- Track 32 : Judy_26
- Track 33 : RootBeer_22
- Track 34 : Bridgette_25
- Track 35 : QuinnAvery_25

- Track 36 : Cole_23
- Track 37 : AllBusiness_24
- Track 38 : Toodles_26
- Track 39 : Gusanita_23
- Track 40 : Schism_25, Guinevere_25, Nandita_25, Lenoxika_25
- Track 41 : Julie_25
- Track 42 : GoodLuckBabe_25
- Track 43 : Ichiang_23, BigSherm_24, Halloweekend_23
- Track 44 : IsHungry_25
- Track 45 : Donatella_24
- Track 46 : Saintcarr_25
- Track 47 : Yonex_25, Ryan_25, Zaheer_25
- Track 48 : Kihatsu_26
- Track 49 : Popper_23
- Track 50 : ToastyOats_28
- Track 51 : Kukla_22
- Track 52 : TripleJ_24, PetriParty_23
- Track 53 : DreamEater_23
- Track 54 : Music_27, Gooberta_27
- Track 55 : Hirko_27
- Track 56 : GoldDust_27, Vibaki_27
- Track 57 : Vitus_27
- Track 58 : Zucker_24, Bauer_25
- Track 59 : Pitbull_22
- Track 60 : Skitty_22, MrSmee_22
- Track 61 : Merpity_24
- Track 62 : Altostratus_20
- Track 63 : DillyDally_21

Summary of Final Annotations (See graph section above for start numbers):

The start number called the most often in the published annotations is 27, it was called in 45 of the 63 non-draft genes in the pham.

Genes that call this "Most Annotated" start:

• AdaS_27, AllBusiness_24, Altostratus_20, Beagle_31, BetaFish_30, BigSherm_24, BillyTP_27, Bridgette_25, BruhMoment_25, ChuckDuck_26, Cole_23, DillyDally_21, Donatella_24, DreamEater_23, Faja_24, Forrestell_27, FosterFrank_26, GoldDust_27, GoodLuckBabe_25, Gorpy_27, Guinevere_25, Gusanita_23, Halloweekend_23, Hirko_27, Hive_30, Ichiang_23, IsHungry_25, Isolde_27, JellyBread_27, Judy_26, Julie_25, Kabloowy_27, KayMoney_26, Kihatsu_26, Kubulix_31, Kukla_22, Lawnathon_27, LeBruni_27, Lenoxika_25, LittleRon_26, MUWow_26, Mapleville_27, MellowYellow_27, Nandita_25, NewKitty_28, NyleyClemson_26, Phrank15_26, PhuzzTulsa_28, Pitbull_22, Popper_23, Pucara_25, Pureglobe5_32, QuinnAvery_25, Raphaella_27, RazzB_26, Ryan_25, Saintcarr_25, Sakai_27, Schism_25, SonDevVon_26, Sporco_28, ToastyOats_28, Toodles_26, Vibaki_27, Vopal_28, Yonex_25, Zaheer_25,

Genes that have the "Most Annotated" start but do not call it:

• EvePickles_24, Gooberta_27, Music_27, RIPWilbur_28,

Genes that do not have the "Most Annotated" start:

• Abba_28, AbbyDaisy_24, Anekin_26, Bauer_25, Bhageatrice_29, Cassia_58, Crescenzo_27, DarwinJr_30, GumGum_27, JakeTheSnake_27, Merpity_24, MrSmee_22, Nostromo_27, Persistence_26, PetriParty_23, Ranunculus_24, Raqqa_24, RootBeer_22, Satrap_27, Seahorse_28, Shukran_27, Skitty_22, Tiff81_28, TripleJ_24, Vitus_27, Zucker_24,

Summary by start number:

Start 16:

- Found in 11 of 97 (11.3%) of genes in pham
- No Manual Annotations of this start.
- Called 9.1% of time when present
- Phage (with cluster) where this start called: RIPWilbur_28 (AP2),

Start 17:

- Found in 1 of 97 (1.0%) of genes in pham
- Manual Annotations of this start: 1 of 63
- Called 100.0% of time when present
- Phage (with cluster) where this start called: Ranunculus_24 (AP),

Start 18:

- Found in 1 of 97 (1.0%) of genes in pham
- Manual Annotations of this start: 1 of 63
- Called 100.0% of time when present
- Phage (with cluster) where this start called: Cassia_58 (AZ1),

Start 20:

- Found in 21 of 97 (21.6%) of genes in pham
- Manual Annotations of this start: 12 of 63
- Called 90.5% of time when present
- Phage (with cluster) where this start called: AbbyDaisy_24 (AY), Anekin_26 (AY), Bauer_25 (FN), Bhageatrice_29 (AY), Crescenzo_27 (AY), GumGum_27 (AY), JakeTheSnake_27 (AY), Merpity_24 (FQ), MrSmee_22 (FQ), Persistence_26 (AY), PetriParty_23 (FJ), Raqqa_24 (AY), RootBeer_22 (FA), Seahorse_28 (AY), Shukran_27 (AY), Skitty_22 (FQ), Tiff81_28 (AY), TripleJ_24 (FJ), Zucker_24 (FN),

Start 21:

- Found in 7 of 97 (7.2%) of genes in pham
- Manual Annotations of this start: 1 of 63
- Called 14.3% of time when present
- Phage (with cluster) where this start called: EvePickles_24 (AY),

Start 25:

- Found in 16 of 97 (16.5%) of genes in pham
- No Manual Annotations of this start.
- Called 12.5% of time when present
- Phage (with cluster) where this start called: DarwinJr_30 (AY), Satrap_27 (AY),

Start 26:

- Found in 3 of 97 (3.1%) of genes in pham
- Manual Annotations of this start: 3 of 63

- Called 100.0% of time when present
- Phage (with cluster) where this start called: Abba_28 (AO3), Nostromo_27 (AO3), Vitus_27 (FL),

Start 27:

- Found in 71 of 97 (73.2%) of genes in pham
- Manual Annotations of this start: 45 of 63
- Called 94.4% of time when present
- Phage (with cluster) where this start called: AdaS_27 (AY), AllBusiness_24 (FF), Altostratus_20 (FS), Beagle_31 (AP2), BetaFish_30 (AP2), BigSherm_24 (FF), BillyTP_27 (AY), Bridgette_25 (FA), BruhMoment_25 (AP3), ChuckDuck_26 (FA), Cole_23 (FF), DillyDally_21 (singleton), Donatella_24 (FF), DreamEater_23 (FJ), Faja_24 (AY), Forrestell_27 (AP2), FosterFrank_26 (FA), GoldDust_27 (FL), GoodLuckBabe_25 (FF), Gorpy_27 (AY), Guinevere_25 (FF), Gusanita_23 (FF), Halloweekend_23 (FF), Hirko_27 (FL), Hive_30 (AP2), Ichiang_23 (FF), IsHungry_25 (FF), Isolde_27 (AY), JellyBread_27 (AY), Judy_26 (FA), Julie_25 (FF), Kabloowy_27 (AY), KayMoney_26 (FA), Kihatsu_26 (FF), Kubulix_31 (AP2), Kukla_22 (FJ), Lawnathon_27 (AY), LeBruni_27 (AY), Lenoxika_25 (FF), LittleRon_26 (FA), MUWow_26 (AY), Mapleville_27 (AY), MellowYellow_27 (AP2), Nandita_25 (FF), NewKitty_28 (AY), NyleyClemson_26 (AP2), Phrank15_26 (AY), PhuzzTulsa_28 (AP2), Pitbull_22 (FQ), Popper_23 (FF), Pucara_25 (FA), Pureglobe5_32 (AP2), QuinnAvery_25 (FF), Raphaella_27 (AY), RazzB_26 (AP2), Ryan_25 (FF), Saintcarr_25 (FF), Sakai_27 (AY), Schism_25 (FF), SonDevVon_26 (AY), Sporco_28 (AY), ToastyOats_28 (FF), Toodles_26 (FF), Vibaki_27 (FL), Vopal_28 (AY), Yonex_25 (FF), Zaheer_25 (FF),

Start 28:

- Found in 34 of 97 (35.1%) of genes in pham
- No Manual Annotations of this start.
- Called 5.9% of time when present
- Phage (with cluster) where this start called: Gooberta_27 (FL), Music_27 (FL),

Summary by clusters:

There are 14 clusters represented in this pham: FQ, singleton, FS, FA, AP2, AP3, AP, AO3, FF, AY, AZ1, FJ, FL, FN,

Info for manual annotations of cluster AO3:

- Start number 26 was manually annotated 2 times for cluster AO3.

Info for manual annotations of cluster AP:

- Start number 17 was manually annotated 1 time for cluster AP.

Info for manual annotations of cluster AP2:

- Start number 27 was manually annotated 6 times for cluster AP2.

Info for manual annotations of cluster AP3:

- Start number 27 was manually annotated 1 time for cluster AP3.

Info for manual annotations of cluster AY:

- Start number 20 was manually annotated 6 times for cluster AY.
- Start number 21 was manually annotated 1 time for cluster AY.
- Start number 27 was manually annotated 11 times for cluster AY.

Info for manual annotations of cluster AZ1:

- Start number 18 was manually annotated 1 time for cluster AZ1.

Info for manual annotations of cluster FA:

- Start number 20 was manually annotated 1 time for cluster FA.
- Start number 27 was manually annotated 4 times for cluster FA.

Info for manual annotations of cluster FF:

- Start number 27 was manually annotated 16 times for cluster FF.

Info for manual annotations of cluster FJ:

- Start number 20 was manually annotated 1 time for cluster FJ.
- Start number 27 was manually annotated 1 time for cluster FJ.

Info for manual annotations of cluster FL:

- Start number 26 was manually annotated 1 time for cluster FL.
- Start number 27 was manually annotated 3 times for cluster FL.

Info for manual annotations of cluster FN:

- Start number 20 was manually annotated 2 times for cluster FN.

Info for manual annotations of cluster FQ:

- Start number 20 was manually annotated 2 times for cluster FQ.
- Start number 27 was manually annotated 1 time for cluster FQ.

Info for manual annotations of cluster FS:

- Start number 27 was manually annotated 1 time for cluster FS.

Gene Information:

Gene: Abba_28 Start: 23837, Stop: 24787, Start Num: 26

Candidate Starts for Abba_28:

(Start: 26 @23837 has 3 MA's), (39, 23951), (44, 24011), (52, 24065), (53, 24071), (59, 24110), (68, 24167), (80, 24287), (88, 24389), (112, 24572), (119, 24677),

Gene: AbbyDaisy_24 Start: 18360, Stop: 19346, Start Num: 20

Candidate Starts for AbbyDaisy_24:

(Start: 20 @18360 has 12 MA's), (25, 18408), (35, 18471), (41, 18537), (45, 18582), (64, 18714), (67, 18729), (74, 18810), (77, 18822), (82, 18876), (84, 18903), (88, 18945), (119, 19245), (123, 19281),

Gene: AdaS_27 Start: 19401, Stop: 20348, Start Num: 27

Candidate Starts for AdaS_27:

(Start: 27 @19401 has 45 MA's), (38, 19488), (60, 19680), (64, 19716), (68, 19734), (75, 19806), (88, 19947), (96, 19983), (102, 20049), (103, 20061), (104, 20070), (109, 20112), (115, 20151), (120, 20247),

Gene: AllBusiness_24 Start: 18932, Stop: 19873, Start Num: 27

Candidate Starts for AllBusiness_24:

(23, 18899), (Start: 27 @18932 has 45 MA's), (28, 18941), (31, 18965), (36, 19004), (40, 19049), (41, 19061), (43, 19085), (50, 19145), (55, 19175), (85, 19424), (87, 19460), (88, 19478), (103, 19589),

(117, 19754), (118, 19757),

Gene: Altostratus_20 Start: 16612, Stop: 17556, Start Num: 27

Candidate Starts for Altostratus_20:

(Start: 27 @16612 has 45 MA's), (28, 16621), (30, 16642), (36, 16687), (39, 16726), (43, 16768), (50, 16828), (55, 16858), (59, 16885), (74, 17011), (76, 17020), (87, 17143), (88, 17161), (103, 17272), (117, 17437), (118, 17440),

Gene: Anekin_26 Start: 19364, Stop: 20353, Start Num: 20

Candidate Starts for Anekin_26:

(Start: 20 @19364 has 12 MA's), (25, 19412), (29, 19430), (32, 19457), (34, 19469), (35, 19475), (40, 19529), (45, 19586), (72, 19796), (84, 19907), (88, 19949), (119, 20252),

Gene: Bauer_25 Start: 19072, Stop: 20058, Start Num: 20

Candidate Starts for Bauer_25:

(Start: 20 @19072 has 12 MA's), (25, 19120), (34, 19177), (35, 19183), (43, 19273), (45, 19294), (57, 19366), (64, 19426), (70, 19459), (84, 19615), (88, 19657), (119, 19957), (123, 19993),

Gene: Beagle_31 Start: 18239, Stop: 19177, Start Num: 27

Candidate Starts for Beagle_31:

(16, 18191), (Start: 27 @18239 has 45 MA's), (44, 18410), (62, 18539), (75, 18644), (88, 18776), (96, 18812), (104, 18899), (115, 18980), (121, 19091), (126, 19133),

Gene: BetaFish_30 Start: 18442, Stop: 19380, Start Num: 27

Candidate Starts for BetaFish_30:

(16, 18394), (Start: 27 @18442 has 45 MA's), (44, 18613), (62, 18742), (75, 18847), (88, 18979), (96, 19015), (104, 19102), (115, 19183), (121, 19294), (126, 19336),

Gene: Bhageatrice_29 Start: 20688, Stop: 21674, Start Num: 20

Candidate Starts for Bhageatrice_29:

(Start: 20 @20688 has 12 MA's), (25, 20736), (28, 20751), (32, 20781), (34, 20793), (35, 20799), (72, 21120), (84, 21231), (88, 21273), (98, 21351), (119, 21573),

Gene: BigSherm_24 Start: 18768, Stop: 19712, Start Num: 27

Candidate Starts for BigSherm_24:

(1, 18072), (2, 18099), (3, 18219), (Start: 21 @18735 has 1 MA's), (Start: 27 @18768 has 45 MA's), (47, 18957), (60, 19044), (64, 19080), (68, 19098), (75, 19170), (88, 19311), (96, 19347), (104, 19434), (109, 19476), (115, 19515), (124, 19653),

Gene: BillyTP_27 Start: 19185, Stop: 20132, Start Num: 27

Candidate Starts for BillyTP_27:

(Start: 27 @19185 has 45 MA's), (38, 19272), (60, 19464), (64, 19500), (68, 19518), (75, 19590), (88, 19731), (96, 19767), (102, 19833), (103, 19845), (104, 19854), (109, 19896), (115, 19935), (120, 20031),

Gene: Bridgette_25 Start: 19437, Stop: 20381, Start Num: 27

Candidate Starts for Bridgette_25:

(Start: 27 @19437 has 45 MA's), (28, 19446), (30, 19467), (37, 19521), (50, 19653), (54, 19674), (55, 19683), (59, 19710), (65, 19755), (87, 19968), (88, 19986), (103, 20097), (106, 20121), (112, 20172),

Gene: BruhMoment_25 Start: 17728, Stop: 18663, Start Num: 27

Candidate Starts for BruhMoment_25:

(11, 17551), (Start: 27 @17728 has 45 MA's), (34, 17779), (60, 18004), (64, 18040), (68, 18058), (75, 18130), (88, 18262), (92, 18271), (96, 18298), (115, 18466), (126, 18619),

Gene: Cassia_58 Start: 39217, Stop: 40194, Start Num: 18

Candidate Starts for Cassia_58:

(Start: 18 @39217 has 1 MA's), (25, 39268), (32, 39313), (42, 39406), (58, 39523), (90, 39814), (102, 39910), (108, 39973), (119, 40111),

Gene: ChuckDuck_26 Start: 19302, Stop: 20249, Start Num: 27

Candidate Starts for ChuckDuck_26:

(10, 19077), (Start: 27 @19302 has 45 MA's), (38, 19389), (60, 19581), (62, 19602), (64, 19617), (68, 19635), (75, 19707), (88, 19848), (96, 19884), (102, 19950), (103, 19962), (104, 19971), (115, 20052), (120, 20148),

Gene: Cole_23 Start: 18430, Stop: 19374, Start Num: 27

Candidate Starts for Cole_23:

(14, 18352), (23, 18397), (Start: 27 @18430 has 45 MA's), (28, 18439), (30, 18460), (33, 18478), (39, 18544), (50, 18646), (55, 18676), (59, 18703), (74, 18829), (81, 18898), (87, 18961), (88, 18979), (103, 19090), (125, 19327),

Gene: Crescenzo_27 Start: 19292, Stop: 20281, Start Num: 20

Candidate Starts for Crescenzo_27:

(Start: 20 @19292 has 12 MA's), (25, 19340), (29, 19358), (32, 19385), (34, 19397), (35, 19403), (40, 19457), (45, 19514), (72, 19724), (84, 19835), (88, 19877), (119, 20180),

Gene: DarwinJr_30 Start: 20644, Stop: 21585, Start Num: 25

Candidate Starts for DarwinJr_30:

(Start: 20 @20596 has 12 MA's), (25, 20644), (29, 20662), (32, 20689), (34, 20701), (35, 20707), (40, 20761), (45, 20818), (72, 21028), (84, 21139), (88, 21181), (119, 21484),

Gene: DillyDally_21 Start: 18052, Stop: 18999, Start Num: 27

Candidate Starts for DillyDally_21:

(Start: 21 @18010 has 1 MA's), (Start: 27 @18052 has 45 MA's), (38, 18136), (44, 18220), (48, 18244), (60, 18331), (68, 18385), (73, 18445), (75, 18457), (88, 18598), (94, 18619), (95, 18622), (96, 18634), (102, 18700), (103, 18712), (104, 18721), (115, 18802), (126, 18955),

Gene: Donatella_24 Start: 18894, Stop: 19838, Start Num: 27

Candidate Starts for Donatella_24:

(14, 18816), (23, 18861), (Start: 27 @18894 has 45 MA's), (28, 18903), (50, 19110), (55, 19140), (59, 19167), (74, 19293), (81, 19362), (87, 19425), (88, 19443), (103, 19554), (125, 19791),

Gene: DreamEater_23 Start: 18211, Stop: 19155, Start Num: 27

Candidate Starts for DreamEater_23:

(Start: 27 @18211 has 45 MA's), (28, 18220), (30, 18241), (37, 18295), (50, 18427), (53, 18445), (55, 18457), (59, 18484), (67, 18538), (88, 18760), (101, 18853), (106, 18895), (112, 18946), (116, 18991),

Gene: EvePickles_24 Start: 17997, Stop: 18980, Start Num: 21

Candidate Starts for EvePickles_24:

(Start: 21 @17997 has 1 MA's), (Start: 27 @18036 has 45 MA's), (38, 18120), (64, 18348), (68, 18366), (74, 18432), (75, 18438), (87, 18564), (88, 18579), (95, 18603), (96, 18615), (102, 18681), (103, 18693), (104, 18702), (117, 18861), (120, 18879), (124, 18921), (126, 18936),

Gene: Faja_24 Start: 17929, Stop: 18873, Start Num: 27

Candidate Starts for Faja_24:

(13, 17845), (Start: 27 @17929 has 45 MA's), (38, 18013), (44, 18097), (60, 18205), (68, 18259), (70, 18274), (75, 18331), (88, 18472), (93, 18484), (96, 18508), (115, 18676), (126, 18829),

Gene: Forrestell_27 Start: 16947, Stop: 17885, Start Num: 27

Candidate Starts for Forrestell_27:

(16, 16899), (Start: 27 @16947 has 45 MA's), (31, 16980), (34, 17001), (60, 17226), (68, 17280), (75, 17352), (88, 17484), (96, 17520), (102, 17586), (104, 17607), (115, 17688), (121, 17799), (124, 17826), (126, 17841),

Gene: FosterFrank_26 Start: 19374, Stop: 20324, Start Num: 27

Candidate Starts for FosterFrank_26:

(Start: 27 @19374 has 45 MA's), (44, 19545), (68, 19707), (75, 19779), (89, 19923), (96, 19962), (102, 20028),

Gene: GoldDust_27 Start: 25550, Stop: 26509, Start Num: 27

Candidate Starts for GoldDust_27:

(15, 25475), (Start: 27 @25550 has 45 MA's), (28, 25559), (39, 25658), (54, 25781), (59, 25817), (68, 25874), (76, 25952), (88, 26111), (99, 26183), (112, 26297), (119, 26402),

Gene: Gooberta_27 Start: 25558, Stop: 26508, Start Num: 28

Candidate Starts for Gooberta_27:

(15, 25474), (Start: 27 @25549 has 45 MA's), (28, 25558), (39, 25657), (54, 25780), (59, 25816), (68, 25873), (76, 25951), (88, 26110), (99, 26182), (112, 26296), (119, 26401),

Gene: GoodLuckBabe_25 Start: 19039, Stop: 19983, Start Num: 27

Candidate Starts for GoodLuckBabe_25:

(Start: 27 @19039 has 45 MA's), (28, 19048), (36, 19114), (37, 19123), (39, 19153), (40, 19159), (50, 19255), (55, 19285), (59, 19312), (61, 19324), (65, 19357), (69, 19375), (87, 19570), (88, 19588), (103, 19699), (117, 19864), (118, 19867),

Gene: Gorpy_27 Start: 19410, Stop: 20357, Start Num: 27

Candidate Starts for Gorpy_27:

(Start: 27 @19410 has 45 MA's), (38, 19497), (60, 19689), (64, 19725), (68, 19743), (75, 19815), (88, 19956), (96, 19992), (102, 20058), (103, 20070), (104, 20079), (109, 20121), (115, 20160), (120, 20256),

Gene: Guinevere_25 Start: 18629, Stop: 19573, Start Num: 27

Candidate Starts for Guinevere_25:

(Start: 27 @18629 has 45 MA's), (28, 18638), (30, 18659), (36, 18704), (37, 18713), (50, 18845), (55, 18875), (61, 18914), (87, 19160), (88, 19178), (103, 19289), (117, 19454), (118, 19457),

Gene: GumGum_27 Start: 19350, Stop: 20336, Start Num: 20

Candidate Starts for GumGum_27:

(Start: 20 @19350 has 12 MA's), (25, 19398), (28, 19413), (29, 19416), (32, 19443), (34, 19455), (35, 19461), (84, 19893), (88, 19935), (107, 20094), (119, 20235),

Gene: Gusanita_23 Start: 18476, Stop: 19420, Start Num: 27

Candidate Starts for Gusanita_23:

(24, 18443), (Start: 27 @18476 has 45 MA's), (28, 18485), (30, 18506), (37, 18560), (40, 18596), (50, 18692), (55, 18722), (59, 18749), (83, 18965), (87, 19007), (88, 19025), (106, 19160), (118, 19304),

Gene: Halloweekend_23 Start: 18394, Stop: 19338, Start Num: 27

Candidate Starts for Halloweekend_23:

(1, 17698), (2, 17725), (3, 17845), (Start: 21 @18361 has 1 MA's), (Start: 27 @18394 has 45 MA's), (47, 18583), (60, 18670), (64, 18706), (68, 18724), (75, 18796), (88, 18937), (96, 18973), (104, 19060), (109, 19102), (115, 19141), (124, 19279),

Gene: Hirko_27 Start: 25896, Stop: 26837, Start Num: 27

Candidate Starts for Hirko_27:

(Start: 27 @25896 has 45 MA's), (39, 26004), (52, 26118), (53, 26124), (59, 26163), (68, 26220), (76, 26298), (86, 26391), (88, 26439), (99, 26511), (111, 26619), (112, 26625), (119, 26730),

Gene: Hive_30 Start: 18323, Stop: 19261, Start Num: 27

Candidate Starts for Hive_30:

(16, 18275), (Start: 27 @18323 has 45 MA's), (62, 18623), (75, 18728), (88, 18860), (96, 18896), (104, 18983), (115, 19064), (121, 19175), (126, 19217),

Gene: Ichiang_23 Start: 18411, Stop: 19355, Start Num: 27

Candidate Starts for Ichiang_23:

(1, 17715), (2, 17742), (3, 17862), (Start: 21 @18378 has 1 MA's), (Start: 27 @18411 has 45 MA's), (47, 18600), (60, 18687), (64, 18723), (68, 18741), (75, 18813), (88, 18954), (96, 18990), (104, 19077), (109, 19119), (115, 19158), (124, 19296),

Gene: IsHungry_25 Start: 19021, Stop: 19965, Start Num: 27

Candidate Starts for IsHungry_25:

(Start: 27 @19021 has 45 MA's), (44, 19189), (47, 19210), (60, 19297), (68, 19351), (88, 19564), (96, 19600), (103, 19678),

Gene: Isolde_27 Start: 19236, Stop: 20183, Start Num: 27

Candidate Starts for Isolde_27:

(Start: 27 @19236 has 45 MA's), (38, 19323), (60, 19515), (64, 19551), (68, 19569), (75, 19641), (88, 19782), (96, 19818), (102, 19884), (103, 19896), (104, 19905), (109, 19947), (115, 19986), (120, 20082),

Gene: JakeTheSnake_27 Start: 19259, Stop: 20248, Start Num: 20

Candidate Starts for JakeTheSnake_27:

(Start: 20 @19259 has 12 MA's), (49, 19508), (63, 19607), (66, 19622), (72, 19685), (78, 19721), (88, 19853), (100, 19931), (103, 19964), (104, 19973), (117, 20129), (118, 20132), (121, 20162),

Gene: JellyBread_27 Start: 19394, Stop: 20341, Start Num: 27

Candidate Starts for JellyBread_27:

(Start: 27 @19394 has 45 MA's), (38, 19481), (47, 19586), (60, 19673), (64, 19709), (68, 19727), (75, 19799), (88, 19940), (96, 19976), (102, 20042), (103, 20054), (104, 20063), (109, 20105), (115, 20144), (120, 20240),

Gene: Judy_26 Start: 19687, Stop: 20631, Start Num: 27

Candidate Starts for Judy_26:

(Start: 27 @19687 has 45 MA's), (28, 19696), (30, 19717), (37, 19771), (50, 19903), (55, 19933), (59, 19960), (65, 20005), (87, 20218), (88, 20236), (97, 20284), (115, 20437), (117, 20512),

Gene: Julie_25 Start: 19080, Stop: 20024, Start Num: 27

Candidate Starts for Julie_25:

(23, 19047), (Start: 27 @19080 has 45 MA's), (28, 19089), (50, 19296), (53, 19314), (55, 19326), (59, 19353), (65, 19398), (74, 19479), (87, 19611), (88, 19629), (103, 19740), (125, 19977),

Gene: Kabloowy_27 Start: 19590, Stop: 20537, Start Num: 27

Candidate Starts for Kabloowy_27:

(9, 19362), (10, 19365), (Start: 27 @19590 has 45 MA's), (38, 19677), (52, 19818), (60, 19869), (64, 19905), (68, 19923), (75, 19995), (88, 20136), (96, 20172), (102, 20238), (115, 20340), (124, 20478),

Gene: KayMoney_26 Start: 19306, Stop: 20253, Start Num: 27

Candidate Starts for KayMoney_26:

(10, 19081), (Start: 27 @19306 has 45 MA's), (38, 19393), (60, 19585), (62, 19606), (64, 19621), (68, 19639), (75, 19711), (88, 19852), (96, 19888), (102, 19954), (103, 19966), (104, 19975), (115, 20056), (120, 20152),

Gene: Kihatsu_26 Start: 18954, Stop: 19898, Start Num: 27

Candidate Starts for Kihatsu_26:

(Start: 27 @18954 has 45 MA's), (28, 18963), (36, 19029), (37, 19038), (50, 19170), (55, 19200), (61, 19239), (87, 19485), (88, 19503), (103, 19614), (117, 19779), (118, 19782),

Gene: Kubulix_31 Start: 18432, Stop: 19370, Start Num: 27

Candidate Starts for Kubulix_31:

(16, 18384), (Start: 27 @18432 has 45 MA's), (62, 18732), (75, 18837), (88, 18969), (96, 19005), (104, 19092), (115, 19173), (121, 19284), (126, 19326),

Gene: Kukla_22 Start: 17420, Stop: 18367, Start Num: 27

Candidate Starts for Kukla_22:

(Start: 27 @17420 has 45 MA's), (38, 17504), (47, 17609), (60, 17696), (64, 17732), (68, 17750), (75, 17822), (89, 17966), (96, 18005), (102, 18071),

Gene: Lawnathon_27 Start: 19330, Stop: 20277, Start Num: 27

Candidate Starts for Lawnathon_27:

(Start: 27 @19330 has 45 MA's), (38, 19417), (60, 19609), (64, 19645), (68, 19663), (75, 19735), (88, 19876), (96, 19912), (102, 19978), (103, 19990), (104, 19999), (109, 20041), (115, 20080), (120, 20176),

Gene: LeBruni_27 Start: 19299, Stop: 20252, Start Num: 27

Candidate Starts for LeBruni_27:

(Start: 27 @19299 has 45 MA's), (38, 19386), (46, 19479), (48, 19494), (57, 19551), (68, 19632), (75, 19704), (88, 19851), (96, 19887), (102, 19953), (115, 20055), (121, 20166),

Gene: Lenoxika_25 Start: 18625, Stop: 19569, Start Num: 27

Candidate Starts for Lenoxika_25:

(Start: 27 @18625 has 45 MA's), (28, 18634), (30, 18655), (36, 18700), (37, 18709), (50, 18841), (55, 18871), (61, 18910), (87, 19156), (88, 19174), (103, 19285), (117, 19450), (118, 19453),

Gene: LittleRon_26 Start: 19275, Stop: 20222, Start Num: 27

Candidate Starts for LittleRon_26:

(10, 19050), (Start: 27 @19275 has 45 MA's), (38, 19362), (60, 19554), (62, 19575), (64, 19590), (68, 19608), (75, 19680), (88, 19821), (96, 19857), (102, 19923), (103, 19935), (104, 19944), (115, 20025), (120, 20121),

Gene: MUWow_26 Start: 19494, Stop: 20441, Start Num: 27

Candidate Starts for MUWow_26:

(Start: 27 @19494 has 45 MA's), (38, 19581), (60, 19773), (64, 19809), (68, 19827), (75, 19899), (88, 20040), (96, 20076), (102, 20142), (103, 20154), (104, 20163), (109, 20205), (115, 20244), (120, 20340),

Gene: Mapleville_27 Start: 19400, Stop: 20347, Start Num: 27

Candidate Starts for Mapleville_27:

(Start: 27 @19400 has 45 MA's), (38, 19487), (60, 19679), (64, 19715), (68, 19733), (75, 19805), (88, 19946), (96, 19982), (102, 20048), (103, 20060), (104, 20069), (109, 20111), (115, 20150), (120, 20246),

Gene: MellowYellow_27 Start: 16974, Stop: 17912, Start Num: 27

Candidate Starts for MellowYellow_27:

(16, 16926), (Start: 27 @16974 has 45 MA's), (62, 17274), (75, 17379), (88, 17511), (96, 17547), (104, 17634), (115, 17715), (121, 17826), (126, 17868),

Gene: Merpity_24 Start: 17092, Stop: 18069, Start Num: 20

Candidate Starts for Merpity_24:

(6, 16855), (12, 16990), (Start: 20 @17092 has 12 MA's), (28, 17155), (32, 17179), (34, 17191), (35, 17197), (40, 17251), (42, 17272), (43, 17287), (56, 17383), (77, 17539), (88, 17671), (100, 17749), (103, 17782), (105, 17803), (117, 17947), (118, 17950), (120, 17965), (121, 17980),

Gene: MrSmee_22 Start: 17092, Stop: 18069, Start Num: 20

Candidate Starts for MrSmee_22:

(6, 16855), (8, 16870), (12, 16990), (Start: 20 @17092 has 12 MA's), (28, 17155), (32, 17179), (34, 17191), (35, 17197), (40, 17251), (42, 17272), (43, 17287), (56, 17383), (77, 17539), (88, 17671), (100, 17749), (103, 17782), (105, 17803), (117, 17947),

Gene: Music_27 Start: 25409, Stop: 26359, Start Num: 28

Candidate Starts for Music_27:

(15, 25325), (Start: 27 @25400 has 45 MA's), (28, 25409), (39, 25508), (54, 25631), (59, 25667), (68, 25724), (76, 25802), (88, 25961), (99, 26033), (112, 26147), (119, 26252),

Gene: Nandita_25 Start: 18629, Stop: 19573, Start Num: 27

Candidate Starts for Nandita_25:

(Start: 27 @18629 has 45 MA's), (28, 18638), (30, 18659), (36, 18704), (37, 18713), (50, 18845), (55, 18875), (61, 18914), (87, 19160), (88, 19178), (103, 19289), (117, 19454), (118, 19457),

Gene: NewKitty_28 Start: 19631, Stop: 20578, Start Num: 27

Candidate Starts for NewKitty_28:

(Start: 27 @19631 has 45 MA's), (38, 19718), (60, 19910), (64, 19946), (68, 19964), (75, 20036), (88, 20177), (96, 20213), (102, 20279), (103, 20291), (104, 20300), (109, 20342), (115, 20381), (120, 20477),

Gene: Nostromo_27 Start: 23313, Stop: 24266, Start Num: 26

Candidate Starts for Nostromo_27:

(19, 23265), (Start: 26 @23313 has 3 MA's), (39, 23427), (52, 23541), (53, 23547), (59, 23586), (80, 23763), (88, 23865), (99, 23937), (112, 24051), (115, 24066), (119, 24156), (122, 24186),

Gene: NyleyClemson_26 Start: 16919, Stop: 17857, Start Num: 27

Candidate Starts for NyleyClemson_26:

(16, 16871), (Start: 27 @16919 has 45 MA's), (62, 17219), (75, 17324), (88, 17456), (96, 17492), (104, 17579), (115, 17660), (121, 17771), (126, 17813),

Gene: Persistence_26 Start: 19282, Stop: 20262, Start Num: 20

Candidate Starts for Persistence_26:

(Start: 20 @19282 has 12 MA's), (22, 19291), (32, 19369), (34, 19381), (56, 19573), (68, 19654), (77, 19729), (88, 19867), (100, 19945), (103, 19978), (104, 19987), (117, 20143), (118, 20146), (121, 20176),

Gene: PetriParty_23 Start: 18266, Stop: 19261, Start Num: 20

Candidate Starts for PetriParty_23:

(Start: 20 @18266 has 12 MA's), (34, 18374), (40, 18434), (49, 18515), (51, 18527), (63, 18614), (66, 18629), (72, 18692), (78, 18728), (88, 18866), (91, 18878), (105, 18998), (117, 19142), (118, 19145),

Gene: Phrank15_26 Start: 19335, Stop: 20282, Start Num: 27

Candidate Starts for Phrank15_26:

(Start: 27 @19335 has 45 MA's), (38, 19422), (60, 19614), (64, 19650), (68, 19668), (75, 19740), (88, 19881), (96, 19917), (102, 19983), (103, 19995), (104, 20004), (109, 20046), (115, 20085), (120, 20181),

Gene: PhuzzTulsa_28 Start: 18221, Stop: 19159, Start Num: 27

Candidate Starts for PhuzzTulsa_28:

(16, 18173), (Start: 27 @18221 has 45 MA's), (44, 18392), (62, 18521), (75, 18626), (88, 18758), (96, 18794), (104, 18881), (115, 18962), (121, 19073), (126, 19115),

Gene: Pitbull_22 Start: 16646, Stop: 17593, Start Num: 27

Candidate Starts for Pitbull_22:

(Start: 21 @16619 has 1 MA's), (Start: 27 @16646 has 45 MA's), (38, 16730), (48, 16838), (60, 16925), (68, 16979), (75, 17051), (88, 17192), (95, 17216), (96, 17228), (102, 17294), (103, 17306), (126, 17549),

Gene: Popper_23 Start: 18534, Stop: 19478, Start Num: 27

Candidate Starts for Popper_23:

(14, 18450), (23, 18495), (Start: 27 @18534 has 45 MA's), (36, 18609), (37, 18618), (50, 18750), (55, 18780), (59, 18807), (87, 19065), (88, 19083), (103, 19194), (110, 19260), (112, 19269), (114, 19281), (116, 19314), (125, 19431),

Gene: Pucara_25 Start: 19341, Stop: 20285, Start Num: 27

Candidate Starts for Pucara_25:

(Start: 27 @19341 has 45 MA's), (28, 19350), (37, 19425), (50, 19557), (55, 19587), (59, 19614), (65, 19659), (88, 19890), (106, 20025), (112, 20076), (116, 20121),

Gene: Pureglobe5_32 Start: 18448, Stop: 19386, Start Num: 27

Candidate Starts for Pureglobe5_32:

(16, 18400), (Start: 27 @18448 has 45 MA's), (44, 18619), (62, 18748), (75, 18853), (88, 18985), (96, 19021), (104, 19108), (115, 19189), (121, 19300), (126, 19342),

Gene: QuinnAvery_25 Start: 18777, Stop: 19721, Start Num: 27

Candidate Starts for QuinnAvery_25:

(1, 18072), (2, 18099), (3, 18219), (Start: 21 @18744 has 1 MA's), (Start: 27 @18777 has 45 MA's), (47, 18966), (60, 19053), (64, 19089), (68, 19107), (75, 19179), (88, 19320), (96, 19356), (104, 19443), (109, 19485), (115, 19524), (124, 19662),

Gene: RIPWilbur_28 Start: 17536, Stop: 18522, Start Num: 16

Candidate Starts for RIPWilbur_28:

(16, 17536), (Start: 27 @17584 has 45 MA's), (62, 17884), (75, 17989), (88, 18121), (96, 18157), (104, 18244), (115, 18325), (121, 18436), (126, 18478),

Gene: Ranunculus_24 Start: 17342, Stop: 18316, Start Num: 17

Candidate Starts for Ranunculus_24:

(Start: 17 @17342 has 1 MA's), (25, 17390), (28, 17405), (29, 17408), (41, 17519), (43, 17543), (71, 17762), (72, 17774), (74, 17792), (88, 17924), (110, 18101), (120, 18218),

Gene: Raphaella_27 Start: 19401, Stop: 20348, Start Num: 27

Candidate Starts for Raphaella_27:

(Start: 27 @19401 has 45 MA's), (38, 19488), (60, 19680), (64, 19716), (68, 19734), (75, 19806), (88, 19947), (96, 19983), (102, 20049), (103, 20061), (104, 20070), (109, 20112), (115, 20151), (120, 20247),

Gene: Raqqa_24 Start: 18653, Stop: 19639, Start Num: 20

Candidate Starts for Raqqa_24:

(7, 18428), (Start: 20 @18653 has 12 MA's), (25, 18701), (28, 18716), (29, 18719), (32, 18746), (72, 19085), (84, 19196), (88, 19238), (119, 19538), (123, 19574),

Gene: RazzB_26 Start: 16747, Stop: 17685, Start Num: 27

Candidate Starts for RazzB_26:

(16, 16699), (Start: 27 @16747 has 45 MA's), (44, 16918), (62, 17047), (75, 17152), (88, 17284), (96, 17320), (104, 17407), (115, 17488), (121, 17599), (126, 17641),

Gene: RootBeer_22 Start: 17010, Stop: 17987, Start Num: 20

Candidate Starts for RootBeer_22:

(4, 16677), (5, 16746), (7, 16785), (Start: 20 @17010 has 12 MA's), (25, 17055), (32, 17100), (88, 17592), (100, 17670), (111, 17772), (117, 17868), (120, 17886),

Gene: Ryan_25 Start: 19219, Stop: 20163, Start Num: 27

Candidate Starts for Ryan_25:

(Start: 27 @19219 has 45 MA's), (28, 19228), (36, 19294), (37, 19303), (39, 19333), (40, 19339), (50, 19435), (55, 19465), (59, 19492), (61, 19504), (65, 19537), (87, 19750), (88, 19768), (103, 19879), (117, 20044), (118, 20047),

Gene: Saintcarr_25 Start: 18775, Stop: 19719, Start Num: 27

Candidate Starts for Saintcarr_25:

(14, 18697), (23, 18742), (Start: 27 @18775 has 45 MA's), (28, 18784), (30, 18805), (39, 18889), (40, 18895), (50, 18991), (55, 19021), (59, 19048), (61, 19060), (65, 19093), (87, 19306), (88, 19324), (103, 19435), (106, 19459), (117, 19600), (118, 19603),

Gene: Sakai_27 Start: 19410, Stop: 20357, Start Num: 27

Candidate Starts for Sakai_27:

(Start: 27 @19410 has 45 MA's), (38, 19497), (60, 19689), (64, 19725), (68, 19743), (75, 19815), (88, 19956), (96, 19992), (102, 20058), (103, 20070), (104, 20079), (109, 20121), (115, 20160), (120, 20256),

Gene: Satrap_27 Start: 19370, Stop: 20308, Start Num: 25

Candidate Starts for Satrap_27:

(Start: 20 @19322 has 12 MA's), (25, 19370), (29, 19388), (35, 19433), (40, 19487), (45, 19544), (64, 19676), (67, 19691), (77, 19784), (84, 19865), (88, 19907), (115, 20120), (119, 20207),

Gene: Schism_25 Start: 18629, Stop: 19573, Start Num: 27

Candidate Starts for Schism_25:

(Start: 27 @18629 has 45 MA's), (28, 18638), (30, 18659), (36, 18704), (37, 18713), (50, 18845), (55, 18875), (61, 18914), (87, 19160), (88, 19178), (103, 19289), (117, 19454), (118, 19457),

Gene: Seahorse_28 Start: 19765, Stop: 20751, Start Num: 20

Candidate Starts for Seahorse_28:

(Start: 20 @19765 has 12 MA's), (25, 19813), (29, 19831), (32, 19858), (34, 19870), (35, 19876), (72, 20197), (79, 20257), (84, 20308), (88, 20350), (119, 20650),

Gene: Shukran_27 Start: 19322, Stop: 20308, Start Num: 20

Candidate Starts for Shukran_27:

(Start: 20 @19322 has 12 MA's), (25, 19370), (29, 19388), (35, 19433), (40, 19487), (45, 19544), (64, 19676), (67, 19691), (77, 19784), (84, 19865), (88, 19907), (115, 20120), (119, 20207),

Gene: Skitty_22 Start: 17092, Stop: 18069, Start Num: 20

Candidate Starts for Skitty_22:

(6, 16855), (8, 16870), (12, 16990), (Start: 20 @17092 has 12 MA's), (28, 17155), (32, 17179), (34, 17191), (35, 17197), (40, 17251), (42, 17272), (43, 17287), (56, 17383), (77, 17539), (88, 17671), (100, 17749), (103, 17782), (105, 17803), (117, 17947),

Gene: SonDevVon_26 Start: 19403, Stop: 20350, Start Num: 27

Candidate Starts for SonDevVon_26:

(Start: 27 @19403 has 45 MA's), (38, 19490), (60, 19682), (64, 19718), (68, 19736), (75, 19808), (88, 19949), (96, 19985), (102, 20051), (103, 20063), (104, 20072), (109, 20114), (115, 20153), (120, 20249),

Gene: Sporco_28 Start: 19458, Stop: 20405, Start Num: 27

Candidate Starts for Sporco_28:

(Start: 27 @19458 has 45 MA's), (60, 19737), (64, 19773), (68, 19791), (75, 19863), (88, 20004), (96, 20040), (102, 20106), (103, 20118), (104, 20127), (109, 20169), (115, 20208), (120, 20304),

Gene: Tiff81_28 Start: 19493, Stop: 20479, Start Num: 20

Candidate Starts for Tiff81_28:

(Start: 20 @19493 has 12 MA's), (25, 19541), (28, 19556), (29, 19559), (32, 19586), (34, 19598), (35, 19604), (45, 19715), (72, 19925), (84, 20036), (88, 20078), (119, 20378),

Gene: ToastyOats_28 Start: 19233, Stop: 20177, Start Num: 27

Candidate Starts for ToastyOats_28:

(14, 19152), (23, 19197), (Start: 27 @19233 has 45 MA's), (28, 19242), (30, 19263), (37, 19317), (39, 19347), (40, 19353), (50, 19449), (55, 19479), (59, 19506), (61, 19518), (65, 19551), (87, 19764), (88, 19782), (103, 19893), (106, 19917), (117, 20058), (118, 20061),

Gene: Toodles_26 Start: 19062, Stop: 20003, Start Num: 27

Candidate Starts for Toodles_26:

(23, 19029), (Start: 27 @19062 has 45 MA's), (28, 19071), (31, 19095), (36, 19134), (40, 19179), (41, 19191), (43, 19215), (50, 19275), (55, 19305), (70, 19404), (85, 19554), (87, 19590), (88, 19608), (103, 19719), (117, 19884), (118, 19887),

Gene: TripleJ_24 Start: 18283, Stop: 19278, Start Num: 20

Candidate Starts for TripleJ_24:

(Start: 20 @18283 has 12 MA's), (34, 18391), (40, 18451), (49, 18532), (51, 18544), (63, 18631), (66, 18646), (72, 18709), (78, 18745), (88, 18883), (91, 18895), (105, 19015), (117, 19159), (118, 19162),

Gene: Vibaki_27 Start: 25425, Stop: 26384, Start Num: 27

Candidate Starts for Vibaki_27:

(15, 25350), (Start: 27 @25425 has 45 MA's), (28, 25434), (39, 25533), (54, 25656), (59, 25692), (68, 25749), (76, 25827), (88, 25986), (99, 26058), (112, 26172), (119, 26277),

Gene: Vitus_27 Start: 22213, Stop: 23169, Start Num: 26

Candidate Starts for Vitus_27:

(Start: 26 @22213 has 3 MA's), (39, 22327), (52, 22441), (53, 22447), (59, 22486), (68, 22543), (76, 22621), (80, 22663), (88, 22774), (98, 22843), (103, 22882), (112, 22957), (113, 22966), (119, 23062), (122, 23092),

Gene: Vopal_28 Start: 19473, Stop: 20420, Start Num: 27

Candidate Starts for Vopal_28:

(Start: 27 @19473 has 45 MA's), (38, 19560), (60, 19752), (64, 19788), (68, 19806), (75, 19878), (88, 20019), (96, 20055), (102, 20121), (103, 20133), (104, 20142), (109, 20184), (115, 20223), (120, 20319),

Gene: Yonex_25 Start: 19219, Stop: 20163, Start Num: 27

Candidate Starts for Yonex_25:

(Start: 27 @19219 has 45 MA's), (28, 19228), (36, 19294), (37, 19303), (39, 19333), (40, 19339), (50, 19435), (55, 19465), (59, 19492), (61, 19504), (65, 19537), (87, 19750), (88, 19768), (103, 19879), (117, 20044), (118, 20047),

Gene: Zaheer_25 Start: 19308, Stop: 20252, Start Num: 27

Candidate Starts for Zaheer_25:

(Start: 27 @19308 has 45 MA's), (28, 19317), (36, 19383), (37, 19392), (39, 19422), (40, 19428), (50, 19524), (55, 19554), (59, 19581), (61, 19593), (65, 19626), (87, 19839), (88, 19857), (103, 19968), (117, 20133), (118, 20136),

Gene: Zucker_24 Start: 18385, Stop: 19371, Start Num: 20

Candidate Starts for Zucker_24:

(Start: 20 @18385 has 12 MA's), (25, 18433), (34, 18490), (35, 18496), (43, 18586), (45, 18607), (57, 18679), (64, 18739), (70, 18772), (84, 18928), (88, 18970), (119, 19270), (123, 19306),