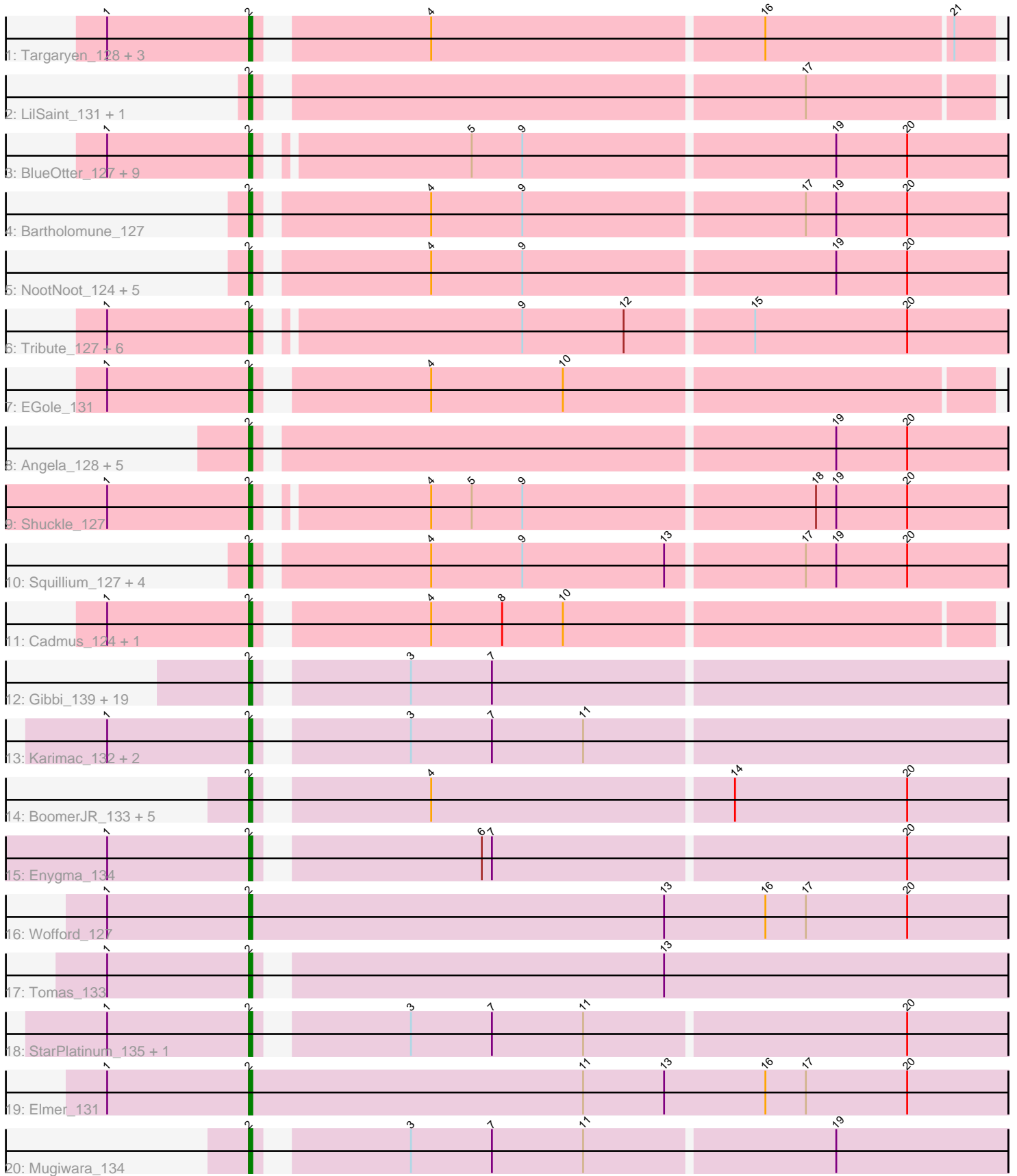


Pham 294654



Note: Tracks are now grouped by subcluster and scaled. Switching in subcluster is indicated by changes in track color. Track scale is now set by default to display the region 30 bp upstream of start 1 to 30 bp downstream of the last possible start. If this default region is judged to be packed too tightly with annotated starts, the track will be further scaled to only show that region of the ORF with annotated starts. This action will be indicated by adding "Zoomed" to the title. For starts, yellow indicates the location of called starts comprised solely of Glimmer/GeneMark auto-annotations, green indicates the location of called starts with at least 1 manual gene annotation.

Pham 294654 Report

This analysis was run 04/18/26 on database version 643.

Pham number 294654 has 81 members, 4 are drafts.

Phages represented in each track:

- Track 1 : Targaryen_128, Warpy_131, Evy_125, Jay2Jay_132
- Track 2 : LilSaint_131, Riptide_126
- Track 3 : BlueOtter_127, Leo04_129, Lululemon_127, HangryHippo_127, Coogler_127, Teutsch_127, Cross_128, Cursive_126, Watermoore_127, PacManQ_127
- Track 4 : Bartholomune_127
- Track 5 : NootNoot_124, WhereRU_126, Davielle_127, Persimmon_127, Braelyn_128, Navo_125
- Track 6 : Tribute_127, Peebs_126, Scheme_129, Sushi23_127, Pepperwood_127, Samisti12_129, Larnav_128
- Track 7 : EGole_131
- Track 8 : Angela_128, Anedea_132, MulchMansion_127, LilMartin_127, Bmoc_131, Marsus_128
- Track 9 : Shuckle_127
- Track 10 : Squillium_127, FreddyDRoo_126, Eliot67_125, PinkiePie_124, Liandry_127
- Track 11 : Cadmus_124, Daubenski_127
- Track 12 : Gibbi_139, CeilingFan_133, Jollison_132, SaltySpitooon_133, Spelly_135, IchabodCrane_128, Amabiko_134, PumpkinSpice_135, TomSawyer_134, Bordeaux_132, AcciDwight_139, KentuckyRacer_135, Quarant19_133, Birchlyn_132, Battuta_132, Wipeout_127, Rikishi_132, JimJam_136, Starbow_131, MindFlayer_129
- Track 13 : Karimac_132, Brizzy_131, Spilled_136
- Track 14 : BoomerJR_133, Genie2_133, Yaboi_132, AngryGiraffe_130, Stanimal_131, Sollertia_132
- Track 15 : Enygma_134
- Track 16 : Wofford_127
- Track 17 : Tomas_133
- Track 18 : StarPlatinum_135, LukeCage_132
- Track 19 : Elmer_131
- Track 20 : Mugiwara_134

Summary of Final Annotations (See graph section above for start numbers):

The start number called the most often in the published annotations is 2, it was called in 77 of the 77 non-draft genes in the pham.

Genes that call this "Most Annotated" start:

- AcciDwight_139, Amabiko_134, Anedea_132, Angela_128, AngryGiraffe_130, Bartholomune_127, Battuta_132, Birchlyn_132, BlueOtter_127, Bmoc_131, BoomerJR_133, Bordeaux_132, Braelyn_128, Brizzy_131, Cadmus_124, CeilingFan_133, Coogler_127, Cross_128, Cursive_126, Daubenski_127, Davielle_127, EGole_131, Eliot67_125, Elmer_131, Enygma_134, Evy_125, FreddyDRoo_126, Genie2_133, Gibbi_139, HangryHippo_127, IchabodCrane_128, Jay2Jay_132, JimJam_136, Jollison_132, Karimac_132, KentuckyRacer_135, Larnav_128, Leo04_129, Liandry_127, LilMartin_127, LilSaint_131, LukeCage_132, Lululemon_127, Marsus_128, MindFlayer_129, Mugiwara_134, MulchMansion_127, Navo_125, NootNoot_124, PacManQ_127, Peebs_126, Pepperwood_127, Persimmon_127, PinkiePie_124, PumpkinSpice_135, Quaran19_133, Rikishi_132, Riptide_126, SaltySpitooon_133, Samisti12_129, Scheme_129, Shuckle_127, Sollertia_132, Spelly_135, Spilled_136, Squillium_127, Stanimal_131, StarPlatinum_135, Starbow_131, Sushi23_127, Targaryen_128, Teutsch_127, TomSawyer_134, Tomas_133, Tribute_127, Warpy_131, Watermoore_127, WhereRU_126, Wipeout_127, Wofford_127, Yaboi_132,

Genes that have the "Most Annotated" start but do not call it:

-

Genes that do not have the "Most Annotated" start:

-

Summary by start number:

Start 2:

- Found in 81 of 81 (100.0%) of genes in pham
- Manual Annotations of this start: 77 of 77
- Called 100.0% of time when present
- Phage (with cluster) where this start called: AcciDwight_139 (BE2), Amabiko_134 (BE2), Anedea_132 (BE1), Angela_128 (BE1), AngryGiraffe_130 (BE2), Bartholomune_127 (BE1), Battuta_132 (BE2), Birchlyn_132 (BE2), BlueOtter_127 (BE1), Bmoc_131 (BE1), BoomerJR_133 (BE2), Bordeaux_132 (BE2), Braelyn_128 (BE1), Brizzy_131 (BE2), Cadmus_124 (BE1), CeilingFan_133 (BE2), Coogler_127 (BE1), Cross_128 (BE1), Cursive_126 (BE1), Daubenski_127 (BE1), Davielle_127 (BE1), EGole_131 (BE1), Eliot67_125 (BE1), Elmer_131 (BE2), Enygma_134 (BE2), Evy_125 (BE1), FreddyDRoo_126 (BE1), Genie2_133 (BE2), Gibbi_139 (BE2), HangryHippo_127 (BE1), IchabodCrane_128 (BE2), Jay2Jay_132 (BE1), JimJam_136 (BE2), Jollison_132 (BE2), Karimac_132 (BE2), KentuckyRacer_135 (BE2), Larnav_128 (BE1), Leo04_129 (BE1), Liandry_127 (BE1), LilMartin_127 (BE1), LilSaint_131 (BE1), LukeCage_132 (BE2), Lululemon_127 (BE1), Marsus_128 (BE1), MindFlayer_129 (BE2), Mugiwara_134 (BE2), MulchMansion_127 (BE1), Navo_125 (BE1), NootNoot_124 (BE1), PacManQ_127 (BE1), Peebs_126 (BE1), Pepperwood_127 (BE1), Persimmon_127 (BE1), PinkiePie_124 (BE1), PumpkinSpice_135 (BE2), Quaran19_133 (BE2), Rikishi_132 (BE2), Riptide_126 (BE1), SaltySpitooon_133 (BE2), Samisti12_129 (BE1), Scheme_129 (BE1), Shuckle_127 (BE1), Sollertia_132 (BE2), Spelly_135 (BE2), Spilled_136 (BE2), Squillium_127 (BE1), Stanimal_131 (BE2), StarPlatinum_135 (BE2), Starbow_131 (BE2), Sushi23_127 (BE1), Targaryen_128 (BE1), Teutsch_127 (BE1),

TomSawyer_134 (BE2), Tomas_133 (BE2), Tribute_127 (BE1), Warpy_131 (BE1), Watermoore_127 (BE1), WhereRU_126 (BE1), Wipeout_127 (BE2), Wofford_127 (BE2), Yaboi_132 (BE2),

Summary by clusters:

There are 2 clusters represented in this pham: BE2, BE1,

Info for manual annotations of cluster BE1:

•Start number 2 was manually annotated 43 times for cluster BE1.

Info for manual annotations of cluster BE2:

•Start number 2 was manually annotated 34 times for cluster BE2.

Gene Information:

Gene: AcciDwight_139 Start: 82654, Stop: 82866, Start Num: 2

Candidate Starts for AcciDwight_139:

(Start: 2 @82654 has 77 MA's), (3, 82693), (7, 82717),

Gene: Amabiko_134 Start: 82699, Stop: 82911, Start Num: 2

Candidate Starts for Amabiko_134:

(Start: 2 @82699 has 77 MA's), (3, 82738), (7, 82762),

Gene: Anedea_132 Start: 82693, Stop: 82908, Start Num: 2

Candidate Starts for Anedea_132:

(Start: 2 @82693 has 77 MA's), (19, 82858), (20, 82879),

Gene: Angela_128 Start: 82343, Stop: 82558, Start Num: 2

Candidate Starts for Angela_128:

(Start: 2 @82343 has 77 MA's), (19, 82508), (20, 82529),

Gene: AngryGiraffe_130 Start: 82587, Stop: 82799, Start Num: 2

Candidate Starts for AngryGiraffe_130:

(Start: 2 @82587 has 77 MA's), (4, 82632), (14, 82719), (20, 82770),

Gene: Bartholomune_127 Start: 82128, Stop: 82343, Start Num: 2

Candidate Starts for Bartholomune_127:

(Start: 2 @82128 has 77 MA's), (4, 82176), (9, 82203), (17, 82284), (19, 82293), (20, 82314),

Gene: Battuta_132 Start: 82672, Stop: 82884, Start Num: 2

Candidate Starts for Battuta_132:

(Start: 2 @82672 has 77 MA's), (3, 82711), (7, 82735),

Gene: Birchlyn_132 Start: 80559, Stop: 80771, Start Num: 2

Candidate Starts for Birchlyn_132:

(Start: 2 @80559 has 77 MA's), (3, 80598), (7, 80622),

Gene: BlueOtter_127 Start: 84382, Stop: 84594, Start Num: 2

Candidate Starts for BlueOtter_127:

(1, 84340), (Start: 2 @84382 has 77 MA's), (5, 84439), (9, 84454), (19, 84544), (20, 84565),

Gene: Bmoc_131 Start: 82638, Stop: 82853, Start Num: 2

Candidate Starts for Bmoc_131:

(Start: 2 @82638 has 77 MA's), (19, 82803), (20, 82824),

Gene: BoomerJR_133 Start: 83002, Stop: 83214, Start Num: 2

Candidate Starts for BoomerJR_133:

(Start: 2 @83002 has 77 MA's), (4, 83047), (14, 83134), (20, 83185),

Gene: Bordeaux_132 Start: 82827, Stop: 83039, Start Num: 2

Candidate Starts for Bordeaux_132:

(Start: 2 @82827 has 77 MA's), (3, 82866), (7, 82890),

Gene: Braelyn_128 Start: 83014, Stop: 83229, Start Num: 2

Candidate Starts for Braelyn_128:

(Start: 2 @83014 has 77 MA's), (4, 83062), (9, 83089), (19, 83179), (20, 83200),

Gene: Brizzy_131 Start: 82480, Stop: 82692, Start Num: 2

Candidate Starts for Brizzy_131:

(1, 82438), (Start: 2 @82480 has 77 MA's), (3, 82519), (7, 82543), (11, 82570),

Gene: Cadmus_124 Start: 82579, Stop: 82785, Start Num: 2

Candidate Starts for Cadmus_124:

(1, 82537), (Start: 2 @82579 has 77 MA's), (4, 82624), (8, 82645), (10, 82663),

Gene: CeilingFan_133 Start: 82590, Stop: 82802, Start Num: 2

Candidate Starts for CeilingFan_133:

(Start: 2 @82590 has 77 MA's), (3, 82629), (7, 82653),

Gene: Coogler_127 Start: 84407, Stop: 84619, Start Num: 2

Candidate Starts for Coogler_127:

(1, 84365), (Start: 2 @84407 has 77 MA's), (5, 84464), (9, 84479), (19, 84569), (20, 84590),

Gene: Cross_128 Start: 84383, Stop: 84595, Start Num: 2

Candidate Starts for Cross_128:

(1, 84341), (Start: 2 @84383 has 77 MA's), (5, 84440), (9, 84455), (19, 84545), (20, 84566),

Gene: Cursive_126 Start: 82592, Stop: 82804, Start Num: 2

Candidate Starts for Cursive_126:

(1, 82550), (Start: 2 @82592 has 77 MA's), (5, 82649), (9, 82664), (19, 82754), (20, 82775),

Gene: Daubenski_127 Start: 83815, Stop: 84021, Start Num: 2

Candidate Starts for Daubenski_127:

(1, 83773), (Start: 2 @83815 has 77 MA's), (4, 83860), (8, 83881), (10, 83899),

Gene: Davielle_127 Start: 82471, Stop: 82686, Start Num: 2

Candidate Starts for Davielle_127:

(Start: 2 @82471 has 77 MA's), (4, 82519), (9, 82546), (19, 82636), (20, 82657),

Gene: EGole_131 Start: 85416, Stop: 85622, Start Num: 2

Candidate Starts for EGole_131:

(1, 85374), (Start: 2 @85416 has 77 MA's), (4, 85461), (10, 85500),

Gene: Eliot67_125 Start: 82164, Stop: 82379, Start Num: 2

Candidate Starts for Eliot67_125:

(Start: 2 @82164 has 77 MA's), (4, 82212), (9, 82239), (13, 82281), (17, 82320), (19, 82329), (20, 82350),

Gene: Elmer_131 Start: 83820, Stop: 84044, Start Num: 2

Candidate Starts for Elmer_131:

(1, 83778), (Start: 2 @83820 has 77 MA's), (11, 83919), (13, 83943), (16, 83973), (17, 83985), (20, 84015),

Gene: Enygma_134 Start: 84511, Stop: 84723, Start Num: 2

Candidate Starts for Enygma_134:

(1, 84469), (Start: 2 @84511 has 77 MA's), (6, 84571), (7, 84574), (20, 84694),

Gene: Evy_125 Start: 84142, Stop: 84348, Start Num: 2

Candidate Starts for Evy_125:

(1, 84100), (Start: 2 @84142 has 77 MA's), (4, 84187), (16, 84283), (21, 84337),

Gene: FreddyDRoo_126 Start: 82164, Stop: 82379, Start Num: 2

Candidate Starts for FreddyDRoo_126:

(Start: 2 @82164 has 77 MA's), (4, 82212), (9, 82239), (13, 82281), (17, 82320), (19, 82329), (20, 82350),

Gene: Genie2_133 Start: 83116, Stop: 83328, Start Num: 2

Candidate Starts for Genie2_133:

(Start: 2 @83116 has 77 MA's), (4, 83161), (14, 83248), (20, 83299),

Gene: Gibbi_139 Start: 82811, Stop: 83023, Start Num: 2

Candidate Starts for Gibbi_139:

(Start: 2 @82811 has 77 MA's), (3, 82850), (7, 82874),

Gene: HangryHippo_127 Start: 84382, Stop: 84594, Start Num: 2

Candidate Starts for HangryHippo_127:

(1, 84340), (Start: 2 @84382 has 77 MA's), (5, 84439), (9, 84454), (19, 84544), (20, 84565),

Gene: IchabodCrane_128 Start: 82400, Stop: 82612, Start Num: 2

Candidate Starts for IchabodCrane_128:

(Start: 2 @82400 has 77 MA's), (3, 82439), (7, 82463),

Gene: Jay2Jay_132 Start: 84980, Stop: 85186, Start Num: 2

Candidate Starts for Jay2Jay_132:

(1, 84938), (Start: 2 @84980 has 77 MA's), (4, 85025), (16, 85121), (21, 85175),

Gene: JimJam_136 Start: 83221, Stop: 83433, Start Num: 2

Candidate Starts for JimJam_136:

(Start: 2 @83221 has 77 MA's), (3, 83260), (7, 83284),

Gene: Jollison_132 Start: 82655, Stop: 82867, Start Num: 2

Candidate Starts for Jollison_132:

(Start: 2 @82655 has 77 MA's), (3, 82694), (7, 82718),

Gene: Karimac_132 Start: 82938, Stop: 83150, Start Num: 2

Candidate Starts for Karimac_132:

(1, 82896), (Start: 2 @82938 has 77 MA's), (3, 82977), (7, 83001), (11, 83028),

Gene: KentuckyRacer_135 Start: 83086, Stop: 83298, Start Num: 2

Candidate Starts for KentuckyRacer_135:

(Start: 2 @83086 has 77 MA's), (3, 83125), (7, 83149),

Gene: Larnav_128 Start: 84366, Stop: 84578, Start Num: 2

Candidate Starts for Larnav_128:

(1, 84324), (Start: 2 @84366 has 77 MA's), (9, 84438), (12, 84468), (15, 84504), (20, 84549),

Gene: Leo04_129 Start: 84882, Stop: 85094, Start Num: 2

Candidate Starts for Leo04_129:

(1, 84840), (Start: 2 @84882 has 77 MA's), (5, 84939), (9, 84954), (19, 85044), (20, 85065),

Gene: Liandry_127 Start: 82871, Stop: 83086, Start Num: 2

Candidate Starts for Liandry_127:

(Start: 2 @82871 has 77 MA's), (4, 82919), (9, 82946), (13, 82988), (17, 83027), (19, 83036), (20, 83057),

Gene: LilMartin_127 Start: 82245, Stop: 82460, Start Num: 2

Candidate Starts for LilMartin_127:

(Start: 2 @82245 has 77 MA's), (19, 82410), (20, 82431),

Gene: LilSaint_131 Start: 82522, Stop: 82728, Start Num: 2

Candidate Starts for LilSaint_131:

(Start: 2 @82522 has 77 MA's), (17, 82675),

Gene: LukeCage_132 Start: 83715, Stop: 83927, Start Num: 2

Candidate Starts for LukeCage_132:

(1, 83673), (Start: 2 @83715 has 77 MA's), (3, 83754), (7, 83778), (11, 83805), (20, 83898),

Gene: Lululemon_127 Start: 83763, Stop: 83975, Start Num: 2

Candidate Starts for Lululemon_127:

(1, 83721), (Start: 2 @83763 has 77 MA's), (5, 83820), (9, 83835), (19, 83925), (20, 83946),

Gene: Marsus_128 Start: 82338, Stop: 82553, Start Num: 2

Candidate Starts for Marsus_128:

(Start: 2 @82338 has 77 MA's), (19, 82503), (20, 82524),

Gene: MindFlayer_129 Start: 82307, Stop: 82519, Start Num: 2

Candidate Starts for MindFlayer_129:

(Start: 2 @82307 has 77 MA's), (3, 82346), (7, 82370),

Gene: Mugiwara_134 Start: 83548, Stop: 83760, Start Num: 2

Candidate Starts for Mugiwara_134:

(Start: 2 @83548 has 77 MA's), (3, 83587), (7, 83611), (11, 83638), (19, 83710),

Gene: MulchMansion_127 Start: 82291, Stop: 82506, Start Num: 2

Candidate Starts for MulchMansion_127:

(Start: 2 @82291 has 77 MA's), (19, 82456), (20, 82477),

Gene: Navo_125 Start: 82676, Stop: 82891, Start Num: 2

Candidate Starts for Navo_125:

(Start: 2 @82676 has 77 MA's), (4, 82724), (9, 82751), (19, 82841), (20, 82862),

Gene: NootNoot_124 Start: 81785, Stop: 82000, Start Num: 2

Candidate Starts for NootNoot_124:

(Start: 2 @81785 has 77 MA's), (4, 81833), (9, 81860), (19, 81950), (20, 81971),

Gene: PacManQ_127 Start: 83763, Stop: 83975, Start Num: 2

Candidate Starts for PacManQ_127:

(1, 83721), (Start: 2 @83763 has 77 MA's), (5, 83820), (9, 83835), (19, 83925), (20, 83946),

Gene: Peebs_126 Start: 84179, Stop: 84391, Start Num: 2

Candidate Starts for Peebs_126:

(1, 84137), (Start: 2 @84179 has 77 MA's), (9, 84251), (12, 84281), (15, 84317), (20, 84362),

Gene: Pepperwood_127 Start: 84309, Stop: 84521, Start Num: 2

Candidate Starts for Pepperwood_127:

(1, 84267), (Start: 2 @84309 has 77 MA's), (9, 84381), (12, 84411), (15, 84447), (20, 84492),

Gene: Persimmon_127 Start: 81719, Stop: 81934, Start Num: 2

Candidate Starts for Persimmon_127:

(Start: 2 @81719 has 77 MA's), (4, 81767), (9, 81794), (19, 81884), (20, 81905),

Gene: PinkiePie_124 Start: 82871, Stop: 83086, Start Num: 2

Candidate Starts for PinkiePie_124:

(Start: 2 @82871 has 77 MA's), (4, 82919), (9, 82946), (13, 82988), (17, 83027), (19, 83036), (20, 83057),

Gene: PumpkinSpice_135 Start: 83263, Stop: 83475, Start Num: 2

Candidate Starts for PumpkinSpice_135:

(Start: 2 @83263 has 77 MA's), (3, 83302), (7, 83326),

Gene: Quaran19_133 Start: 82689, Stop: 82901, Start Num: 2

Candidate Starts for Quaran19_133:

(Start: 2 @82689 has 77 MA's), (3, 82728), (7, 82752),

Gene: Rikishi_132 Start: 82605, Stop: 82817, Start Num: 2

Candidate Starts for Rikishi_132:

(Start: 2 @82605 has 77 MA's), (3, 82644), (7, 82668),

Gene: Riptide_126 Start: 81546, Stop: 81752, Start Num: 2

Candidate Starts for Riptide_126:

(Start: 2 @81546 has 77 MA's), (17, 81699),

Gene: SaltySpittoon_133 Start: 82702, Stop: 82914, Start Num: 2

Candidate Starts for SaltySpittoon_133:

(Start: 2 @82702 has 77 MA's), (3, 82741), (7, 82765),

Gene: Samisti12_129 Start: 85558, Stop: 85770, Start Num: 2

Candidate Starts for Samisti12_129:

(1, 85516), (Start: 2 @85558 has 77 MA's), (9, 85630), (12, 85660), (15, 85696), (20, 85741),

Gene: Scheme_129 Start: 84964, Stop: 85176, Start Num: 2

Candidate Starts for Scheme_129:

(1, 84922), (Start: 2 @84964 has 77 MA's), (9, 85036), (12, 85066), (15, 85102), (20, 85147),

Gene: Shuckle_127 Start: 83413, Stop: 83625, Start Num: 2

Candidate Starts for Shuckle_127:

(1, 83371), (Start: 2 @83413 has 77 MA's), (4, 83458), (5, 83470), (9, 83485), (18, 83569), (19, 83575), (20, 83596),

Gene: Sollertia_132 Start: 83116, Stop: 83328, Start Num: 2

Candidate Starts for Sollertia_132:

(Start: 2 @83116 has 77 MA's), (4, 83161), (14, 83248), (20, 83299),

Gene: Spelly_135 Start: 82654, Stop: 82866, Start Num: 2

Candidate Starts for Spelly_135:

(Start: 2 @82654 has 77 MA's), (3, 82693), (7, 82717),

Gene: Spilled_136 Start: 82772, Stop: 82984, Start Num: 2

Candidate Starts for Spilled_136:

(1, 82730), (Start: 2 @82772 has 77 MA's), (3, 82811), (7, 82835), (11, 82862),

Gene: Squillium_127 Start: 82873, Stop: 83088, Start Num: 2

Candidate Starts for Squillium_127:

(Start: 2 @82873 has 77 MA's), (4, 82921), (9, 82948), (13, 82990), (17, 83029), (19, 83038), (20, 83059),

Gene: Stanimal_131 Start: 83005, Stop: 83217, Start Num: 2

Candidate Starts for Stanimal_131:

(Start: 2 @83005 has 77 MA's), (4, 83050), (14, 83137), (20, 83188),

Gene: StarPlatinum_135 Start: 83969, Stop: 84181, Start Num: 2

Candidate Starts for StarPlatinum_135:

(1, 83927), (Start: 2 @83969 has 77 MA's), (3, 84008), (7, 84032), (11, 84059), (20, 84152),

Gene: Starbow_131 Start: 82674, Stop: 82886, Start Num: 2

Candidate Starts for Starbow_131:

(Start: 2 @82674 has 77 MA's), (3, 82713), (7, 82737),

Gene: Sushi23_127 Start: 84535, Stop: 84747, Start Num: 2

Candidate Starts for Sushi23_127:

(1, 84493), (Start: 2 @84535 has 77 MA's), (9, 84607), (12, 84637), (15, 84673), (20, 84718),

Gene: Targaryen_128 Start: 85122, Stop: 85328, Start Num: 2

Candidate Starts for Targaryen_128:

(1, 85080), (Start: 2 @85122 has 77 MA's), (4, 85167), (16, 85263), (21, 85317),

Gene: Teutsch_127 Start: 84740, Stop: 84952, Start Num: 2

Candidate Starts for Teutsch_127:

(1, 84698), (Start: 2 @84740 has 77 MA's), (5, 84797), (9, 84812), (19, 84902), (20, 84923),

Gene: TomSawyer_134 Start: 82720, Stop: 82932, Start Num: 2

Candidate Starts for TomSawyer_134:

(Start: 2 @82720 has 77 MA's), (3, 82759), (7, 82783),

Gene: Tomas_133 Start: 85720, Stop: 85935, Start Num: 2

Candidate Starts for Tomas_133:

(1, 85678), (Start: 2 @85720 has 77 MA's), (13, 85834),

Gene: Tribute_127 Start: 84727, Stop: 84939, Start Num: 2

Candidate Starts for Tribute_127:

(1, 84685), (Start: 2 @84727 has 77 MA's), (9, 84799), (12, 84829), (15, 84865), (20, 84910),

Gene: Warpy_131 Start: 84634, Stop: 84840, Start Num: 2

Candidate Starts for Warpy_131:

(1, 84592), (Start: 2 @84634 has 77 MA's), (4, 84679), (16, 84775), (21, 84829),

Gene: Watermoore_127 Start: 84954, Stop: 85166, Start Num: 2

Candidate Starts for Watermoore_127:

(1, 84912), (Start: 2 @84954 has 77 MA's), (5, 85011), (9, 85026), (19, 85116), (20, 85137),

Gene: WhereRU_126 Start: 82471, Stop: 82686, Start Num: 2

Candidate Starts for WhereRU_126:

(Start: 2 @82471 has 77 MA's), (4, 82519), (9, 82546), (19, 82636), (20, 82657),

Gene: Wipeout_127 Start: 83044, Stop: 83256, Start Num: 2

Candidate Starts for Wipeout_127:

(Start: 2 @83044 has 77 MA's), (3, 83083), (7, 83107),

Gene: Wofford_127 Start: 83785, Stop: 84009, Start Num: 2

Candidate Starts for Wofford_127:

(1, 83743), (Start: 2 @83785 has 77 MA's), (13, 83908), (16, 83938), (17, 83950), (20, 83980),

Gene: Yaboi_132 Start: 82578, Stop: 82790, Start Num: 2

Candidate Starts for Yaboi_132:

(Start: 2 @82578 has 77 MA's), (4, 82623), (14, 82710), (20, 82761),