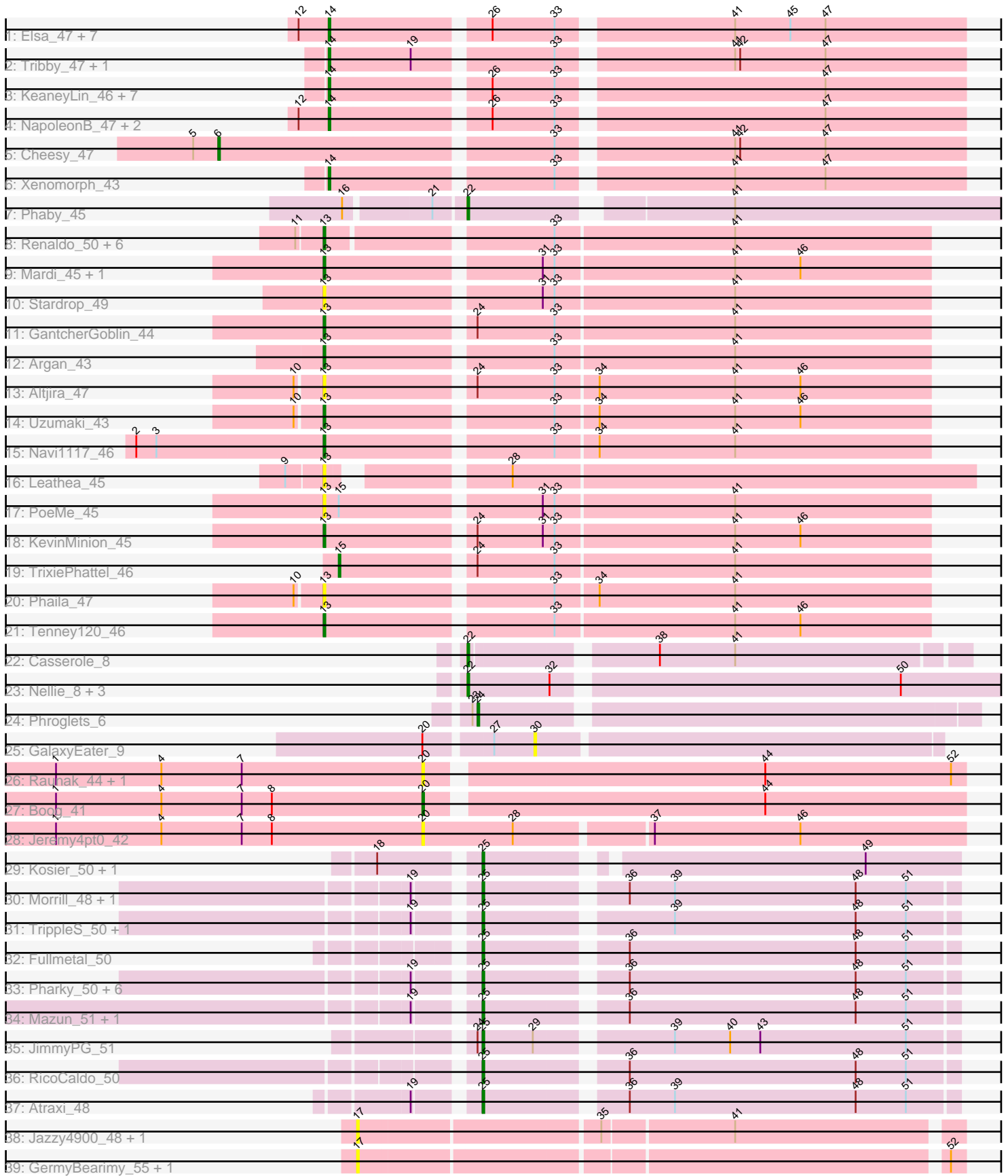


Pham 294661



Note: Tracks are now grouped by subcluster and scaled. Switching in subcluster is indicated by changes in track color. Track scale is now set by default to display the region 30 bp upstream of start 1 to 30 bp downstream of the last possible start. If this default region is judged to be packed too tightly with annotated starts, the track will be further scaled to only show that region of the ORF with annotated starts. This action will be indicated by adding "Zoomed" to the title. For starts, yellow indicates the location of called starts comprised solely of Glimmer/GeneMark auto-annotations, green indicates the location of called starts with at least 1 manual gene annotation.

Pham 294661 Report

This analysis was run 04/18/26 on database version 643.

Pham number 294661 has 79 members, 23 are drafts.

Phages represented in each track:

- Track 1 : Elsa_47, Arcadia_47, Nason_47, Heisenberger_46, Circum_49, Mudcat_44, JEGGS_46, YoshiYama_47
- Track 2 : Tribby_47, Correa_45
- Track 3 : KeaneyLin_46, GoCrazy_46, Mooshroom_49, Kardesai_48, Stardom_44, Benllo_46, Hankly_46, BenitoAntonio_47
- Track 4 : NapoleonB_47, Bowling_47, Dynamite_47
- Track 5 : Cheesy_47
- Track 6 : Xenomorph_43
- Track 7 : Phaby_45
- Track 8 : Renaldo_50, Barbonzobean_50, Muglass_47, Kinny_48, BarbieDoll_49, Biscute_45, Lewando_47
- Track 9 : Mardi_45, Zeina_46
- Track 10 : Stardrop_49
- Track 11 : GantcherGoblin_44
- Track 12 : Argan_43
- Track 13 : Altjira_47
- Track 14 : Uzumaki_43
- Track 15 : Navi1117_46
- Track 16 : Leathea_45
- Track 17 : PoeMe_45
- Track 18 : KevinMinion_45
- Track 19 : TrixiePhattel_46
- Track 20 : Phaila_47
- Track 21 : Tenney120_46
- Track 22 : Casserole_8
- Track 23 : Nellie_8, Brad_8, GurgleFerb_8, Adat_8
- Track 24 : Phroglets_6
- Track 25 : GalaxyEater_9
- Track 26 : Raunak_44, Spain_44
- Track 27 : Boog_41
- Track 28 : Jeremy4pt0_42
- Track 29 : Kosier_50, Fede_50
- Track 30 : Morrill_48, ThirteenKH_52
- Track 31 : TrippleS_50, Yafa_52
- Track 32 : Fullmetal_50
- Track 33 : Pharky_50, Phedro_50, StagePhright_50, Moleficent_51, Astartes_51, Phractured_50, PhriedRice_51

- Track 34 : Mazun_51, Keough_50
- Track 35 : JimmyPG_51
- Track 36 : RicoCaldo_50
- Track 37 : Atraxi_48
- Track 38 : Jazzy4900_48, Sunny4976_47
- Track 39 : GermyBearimy_55, Arzan_49

Summary of Final Annotations (See graph section above for start numbers):

The start number called the most often in the published annotations is 14, it was called in 20 of the 56 non-draft genes in the pham.

Genes that call this "Most Annotated" start:

- Arcadia_47, BenitoAntonio_47, Benllo_46, Bowling_47, Circum_49, Correa_45, Dynamite_47, Elsa_47, GoCrazy_46, Hankly_46, Heisenberger_46, JEGGS_46, Kardesai_48, KeaneyLin_46, Mooshroom_49, Mudcat_44, NapoleonB_47, Nason_47, Stardom_44, Tribby_47, Xenomorph_43, YoshiYama_47,

Genes that have the "Most Annotated" start but do not call it:

-

Genes that do not have the "Most Annotated" start:

- Adat_8, Altjira_47, Argan_43, Arzan_49, Astartes_51, Atraxi_48, BarbieDoll_49, Barbonzobean_50, Biscute_45, Boog_41, Brad_8, Casserole_8, Cheesy_47, Fede_50, Fullmetal_50, GalaxyEater_9, GantcherGoblin_44, GermyBearimy_55, GurgleFerb_8, Jazzy4900_48, Jeremy4pt0_42, JimmyPG_51, Keough_50, KevinMinion_45, Kinny_48, Kosier_50, Leathea_45, Lewando_47, Mardi_45, Mazun_51, Moleficent_51, Morrill_48, Muglass_47, Navi1117_46, Nellie_8, Phaby_45, Phaila_47, Pharky_50, Phedro_50, Phracted_50, PhriedRice_51, Phroglets_6, PoeMe_45, Raunak_44, Renaldo_50, RicoCaldo_50, Spain_44, StagePhright_50, Stardrop_49, Sunny4976_47, Tenney120_46, ThirteenKH_52, TrippleS_50, TrixiePhattel_46, Uzumaki_43, Yafa_52, Zeina_46,

Summary by start number:

Start 6:

- Found in 1 of 79 (1.3%) of genes in pham
- Manual Annotations of this start: 1 of 56
- Called 100.0% of time when present
- Phage (with cluster) where this start called: Cheesy_47 (AM),

Start 13:

- Found in 20 of 79 (25.3%) of genes in pham
- Manual Annotations of this start: 10 of 56
- Called 100.0% of time when present
- Phage (with cluster) where this start called: Altjira_47 (AU6), Argan_43 (AU6), BarbieDoll_49 (AU6), Barbonzobean_50 (AU6), Biscute_45 (AU6), GantcherGoblin_44 (AU6), KevinMinion_45 (AU6), Kinny_48 (AU6), Leathea_45 (AU6), Lewando_47 (AU6), Mardi_45 (AU6), Muglass_47 (AU6), Navi1117_46 (AU6), Phaila_47 (AU6), PoeMe_45 (AU6), Renaldo_50 (AU6), Stardrop_49 (AU6),

Tenney120_46 (AU6), Uzumaki_43 (AU6), Zeina_46 (AU6),

Start 14:

- Found in 22 of 79 (27.8%) of genes in pham
- Manual Annotations of this start: 20 of 56
- Called 100.0% of time when present
- Phage (with cluster) where this start called: Arcadia_47 (AM), BenitoAntonio_47 (AM), Benllo_46 (AM), Bowling_47 (AM), Circum_49 (AM), Correa_45 (AM), Dynamite_47 (AM), Elsa_47 (AM), GoCrazy_46 (AM), Hankly_46 (AM), Heisenberger_46 (AM), JEGGS_46 (AM), Kardesai_48 (AM), KeaneyLin_46 (AM), Mooshroom_49 (AM), Mudcat_44 (AM), NapoleonB_47 (AM), Nason_47 (AM), Stardom_44 (AM), Tribby_47 (AM), Xenomorph_43 (AM), YoshiYama_47 (AM),

Start 15:

- Found in 2 of 79 (2.5%) of genes in pham
- Manual Annotations of this start: 1 of 56
- Called 50.0% of time when present
- Phage (with cluster) where this start called: TrixiePhattel_46 (AU6),

Start 17:

- Found in 4 of 79 (5.1%) of genes in pham
- No Manual Annotations of this start.
- Called 100.0% of time when present
- Phage (with cluster) where this start called: Arzan_49 (FI), GermyBearimy_55 (FI), Jazzy4900_48 (FI), Sunny4976_47 (FI),

Start 20:

- Found in 5 of 79 (6.3%) of genes in pham
- Manual Annotations of this start: 1 of 56
- Called 80.0% of time when present
- Phage (with cluster) where this start called: Boog_41 (AW), Jeremy4pt0_42 (AW), Raunak_44 (AW), Spain_44 (AW),

Start 22:

- Found in 6 of 79 (7.6%) of genes in pham
- Manual Annotations of this start: 6 of 56
- Called 100.0% of time when present
- Phage (with cluster) where this start called: Adat_8 (AV), Brad_8 (AV), Casserole_8 (AV), GurpleFerb_8 (AV), Nellie_8 (AV), Phaby_45 (AU2),

Start 24:

- Found in 6 of 79 (7.6%) of genes in pham
- Manual Annotations of this start: 1 of 56
- Called 16.7% of time when present
- Phage (with cluster) where this start called: Phroglets_6 (AV),

Start 25:

- Found in 19 of 79 (24.1%) of genes in pham
- Manual Annotations of this start: 16 of 56
- Called 100.0% of time when present
- Phage (with cluster) where this start called: Astartes_51 (EK2), Atraxi_48 (EK2), Fede_50 (EK2), Fullmetal_50 (EK2), JimmyPG_51 (EK2), Keough_50 (EK2), Kosier_50 (EK2), Mazun_51 (EK2), Moleficent_51 (EK2), Morrill_48 (EK2),

Pharky_50 (EK2), Phedro_50 (EK2), Phracted_50 (EK2), PhriedRice_51 (EK2), RicoCaldo_50 (EK2), StagePhright_50 (EK2), ThirteenKH_52 (EK2), TrippleS_50 (EK2), Yafa_52 (EK2),

Start 30:

- Found in 1 of 79 (1.3%) of genes in pham
- No Manual Annotations of this start.
- Called 100.0% of time when present
- Phage (with cluster) where this start called: GalaxyEater_9 (AV),

Summary by clusters:

There are 7 clusters represented in this pham: AV, AM, AU2, AW, AU6, FI, EK2,

Info for manual annotations of cluster AM:

- Start number 6 was manually annotated 1 time for cluster AM.
- Start number 14 was manually annotated 20 times for cluster AM.

Info for manual annotations of cluster AU2:

- Start number 22 was manually annotated 1 time for cluster AU2.

Info for manual annotations of cluster AU6:

- Start number 13 was manually annotated 10 times for cluster AU6.
- Start number 15 was manually annotated 1 time for cluster AU6.

Info for manual annotations of cluster AV:

- Start number 22 was manually annotated 5 times for cluster AV.
- Start number 24 was manually annotated 1 time for cluster AV.

Info for manual annotations of cluster AW:

- Start number 20 was manually annotated 1 time for cluster AW.

Info for manual annotations of cluster EK2:

- Start number 25 was manually annotated 16 times for cluster EK2.

Gene Information:

Gene: Adat_8 Start: 4006, Stop: 4347, Start Num: 22

Candidate Starts for Adat_8:

(Start: 22 @4006 has 6 MA's), (32, 4054), (50, 4252),

Gene: Altjira_47 Start: 32911, Stop: 33258, Start Num: 13

Candidate Starts for Altjira_47:

(10, 32896), (Start: 13 @32911 has 10 MA's), (Start: 24 @32992 has 1 MA's), (33, 33037), (34, 33061), (41, 33142), (46, 33181),

Gene: Arcadia_47 Start: 31488, Stop: 31844, Start Num: 14

Candidate Starts for Arcadia_47:

(12, 31473), (Start: 14 @31488 has 20 MA's), (26, 31575), (33, 31611), (41, 31707), (45, 31740), (47, 31761),

Gene: Argan_43 Start: 31213, Stop: 31560, Start Num: 13

Candidate Starts for Argan_43:

(Start: 13 @31213 has 10 MA's), (33, 31339), (41, 31444),

Gene: Arzan_49 Start: 32711, Stop: 33049, Start Num: 17

Candidate Starts for Arzan_49:

(17, 32711), (52, 33041),

Gene: Astartes_51 Start: 50802, Stop: 51071, Start Num: 25

Candidate Starts for Astartes_51:

(19, 50772), (Start: 25 @50802 has 16 MA's), (36, 50877), (48, 51012), (51, 51042),

Gene: Atraxi_48 Start: 50596, Stop: 50865, Start Num: 25

Candidate Starts for Atraxi_48:

(19, 50566), (Start: 25 @50596 has 16 MA's), (36, 50671), (39, 50698), (48, 50806), (51, 50836),

Gene: BarbieDoll_49 Start: 33215, Stop: 33559, Start Num: 13

Candidate Starts for BarbieDoll_49:

(11, 33200), (Start: 13 @33215 has 10 MA's), (33, 33338), (41, 33443),

Gene: Barbonzobean_50 Start: 33259, Stop: 33603, Start Num: 13

Candidate Starts for Barbonzobean_50:

(11, 33244), (Start: 13 @33259 has 10 MA's), (33, 33382), (41, 33487),

Gene: BenitoAntonio_47 Start: 31051, Stop: 31407, Start Num: 14

Candidate Starts for BenitoAntonio_47:

(Start: 14 @31051 has 20 MA's), (26, 31138), (33, 31174), (47, 31324),

Gene: Benllo_46 Start: 31735, Stop: 32091, Start Num: 14

Candidate Starts for Benllo_46:

(Start: 14 @31735 has 20 MA's), (26, 31822), (33, 31858), (47, 32008),

Gene: Biscute_45 Start: 32867, Stop: 33211, Start Num: 13

Candidate Starts for Biscute_45:

(11, 32852), (Start: 13 @32867 has 10 MA's), (33, 32990), (41, 33095),

Gene: Boog_41 Start: 30265, Stop: 30576, Start Num: 20

Candidate Starts for Boog_41:

(1, 30046), (4, 30109), (7, 30157), (8, 30175), (Start: 20 @30265 has 1 MA's), (44, 30457),

Gene: Bowling_47 Start: 31260, Stop: 31616, Start Num: 14

Candidate Starts for Bowling_47:

(12, 31245), (Start: 14 @31260 has 20 MA's), (26, 31347), (33, 31383), (47, 31533),

Gene: Brad_8 Start: 4004, Stop: 4345, Start Num: 22

Candidate Starts for Brad_8:

(Start: 22 @4004 has 6 MA's), (32, 4052), (50, 4250),

Gene: Casserole_8 Start: 4130, Stop: 4408, Start Num: 22

Candidate Starts for Casserole_8:

(Start: 22 @4130 has 6 MA's), (38, 4229), (41, 4274),

Gene: Cheesy_47 Start: 31170, Stop: 31592, Start Num: 6
Candidate Starts for Cheesy_47:
(5, 31155), (Start: 6 @31170 has 1 MA's), (33, 31359), (41, 31455), (42, 31458), (47, 31509),

Gene: Circum_49 Start: 31899, Stop: 32255, Start Num: 14
Candidate Starts for Circum_49:
(12, 31884), (Start: 14 @31899 has 20 MA's), (26, 31986), (33, 32022), (41, 32118), (45, 32151), (47, 32172),

Gene: Correa_45 Start: 30356, Stop: 30712, Start Num: 14
Candidate Starts for Correa_45:
(Start: 14 @30356 has 20 MA's), (19, 30404), (33, 30479), (41, 30575), (42, 30578), (47, 30629),

Gene: Dynamite_47 Start: 31451, Stop: 31807, Start Num: 14
Candidate Starts for Dynamite_47:
(12, 31436), (Start: 14 @31451 has 20 MA's), (26, 31538), (33, 31574), (47, 31724),

Gene: Elsa_47 Start: 31488, Stop: 31844, Start Num: 14
Candidate Starts for Elsa_47:
(12, 31473), (Start: 14 @31488 has 20 MA's), (26, 31575), (33, 31611), (41, 31707), (45, 31740), (47, 31761),

Gene: Fede_50 Start: 51739, Stop: 52002, Start Num: 25
Candidate Starts for Fede_50:
(18, 51688), (Start: 25 @51739 has 16 MA's), (49, 51946),

Gene: Fullmetal_50 Start: 51136, Stop: 51405, Start Num: 25
Candidate Starts for Fullmetal_50:
(Start: 25 @51136 has 16 MA's), (36, 51211), (48, 51346), (51, 51376),

Gene: GalaxyEater_9 Start: 4729, Stop: 4965, Start Num: 30
Candidate Starts for GalaxyEater_9:
(Start: 20 @4669 has 1 MA's), (27, 4705), (30, 4729),

Gene: GantcherGoblin_44 Start: 31712, Stop: 32059, Start Num: 13
Candidate Starts for GantcherGoblin_44:
(Start: 13 @31712 has 10 MA's), (Start: 24 @31793 has 1 MA's), (33, 31838), (41, 31943),

Gene: GermyBearimy_55 Start: 34055, Stop: 34393, Start Num: 17
Candidate Starts for GermyBearimy_55:
(17, 34055), (52, 34385),

Gene: GoCrazy_46 Start: 31363, Stop: 31719, Start Num: 14
Candidate Starts for GoCrazy_46:
(Start: 14 @31363 has 20 MA's), (26, 31450), (33, 31486), (47, 31636),

Gene: GurgleFerb_8 Start: 4005, Stop: 4346, Start Num: 22
Candidate Starts for GurgleFerb_8:
(Start: 22 @4005 has 6 MA's), (32, 4053), (50, 4251),

Gene: Hankly_46 Start: 30664, Stop: 31020, Start Num: 14
Candidate Starts for Hankly_46:
(Start: 14 @30664 has 20 MA's), (26, 30751), (33, 30787), (47, 30937),

Gene: Heisenberger_46 Start: 30928, Stop: 31284, Start Num: 14

Candidate Starts for Heisenberger_46:

(12, 30913), (Start: 14 @30928 has 20 MA's), (26, 31015), (33, 31051), (41, 31147), (45, 31180), (47, 31201),

Gene: JEGGS_46 Start: 30982, Stop: 31338, Start Num: 14

Candidate Starts for JEGGS_46:

(12, 30967), (Start: 14 @30982 has 20 MA's), (26, 31069), (33, 31105), (41, 31201), (45, 31234), (47, 31255),

Gene: Jazzy4900_48 Start: 33511, Stop: 33849, Start Num: 17

Candidate Starts for Jazzy4900_48:

(17, 33511), (35, 33646), (41, 33721),

Gene: Jeremy4pt0_42 Start: 30259, Stop: 30573, Start Num: 20

Candidate Starts for Jeremy4pt0_42:

(1, 30040), (4, 30103), (7, 30151), (8, 30169), (Start: 20 @30259 has 1 MA's), (28, 30313), (37, 30388), (46, 30475),

Gene: JimmyPG_51 Start: 51514, Stop: 51783, Start Num: 25

Candidate Starts for JimmyPG_51:

(Start: 24 @51511 has 1 MA's), (Start: 25 @51514 has 16 MA's), (29, 51544), (39, 51616), (40, 51649), (43, 51667), (51, 51754),

Gene: Kardesai_48 Start: 31635, Stop: 31991, Start Num: 14

Candidate Starts for Kardesai_48:

(Start: 14 @31635 has 20 MA's), (26, 31722), (33, 31758), (47, 31908),

Gene: KeaneyLin_46 Start: 31363, Stop: 31719, Start Num: 14

Candidate Starts for KeaneyLin_46:

(Start: 14 @31363 has 20 MA's), (26, 31450), (33, 31486), (47, 31636),

Gene: Keough_50 Start: 50933, Stop: 51202, Start Num: 25

Candidate Starts for Keough_50:

(19, 50903), (Start: 25 @50933 has 16 MA's), (36, 51008), (48, 51143), (51, 51173),

Gene: KevinMinion_45 Start: 32466, Stop: 32813, Start Num: 13

Candidate Starts for KevinMinion_45:

(Start: 13 @32466 has 10 MA's), (Start: 24 @32547 has 1 MA's), (31, 32586), (33, 32592), (41, 32697), (46, 32736),

Gene: Kinny_48 Start: 33709, Stop: 34053, Start Num: 13

Candidate Starts for Kinny_48:

(11, 33694), (Start: 13 @33709 has 10 MA's), (33, 33832), (41, 33937),

Gene: Kosier_50 Start: 51683, Stop: 51946, Start Num: 25

Candidate Starts for Kosier_50:

(18, 51632), (Start: 25 @51683 has 16 MA's), (49, 51890),

Gene: Leathea_45 Start: 31388, Stop: 31747, Start Num: 13

Candidate Starts for Leathea_45:

(9, 31367), (Start: 13 @31388 has 10 MA's), (28, 31475),

Gene: Lewando_47 Start: 33001, Stop: 33345, Start Num: 13
Candidate Starts for Lewando_47:
(11, 32986), (Start: 13 @33001 has 10 MA's), (33, 33124), (41, 33229),

Gene: Mardi_45 Start: 31800, Stop: 32147, Start Num: 13
Candidate Starts for Mardi_45:
(Start: 13 @31800 has 10 MA's), (31, 31920), (33, 31926), (41, 32031), (46, 32070),

Gene: Mazun_51 Start: 51540, Stop: 51809, Start Num: 25
Candidate Starts for Mazun_51:
(19, 51510), (Start: 25 @51540 has 16 MA's), (36, 51615), (48, 51750), (51, 51780),

Gene: Moleficient_51 Start: 51144, Stop: 51413, Start Num: 25
Candidate Starts for Moleficient_51:
(19, 51114), (Start: 25 @51144 has 16 MA's), (36, 51219), (48, 51354), (51, 51384),

Gene: Mooshroom_49 Start: 31635, Stop: 31991, Start Num: 14
Candidate Starts for Mooshroom_49:
(Start: 14 @31635 has 20 MA's), (26, 31722), (33, 31758), (47, 31908),

Gene: Morrill_48 Start: 50575, Stop: 50844, Start Num: 25
Candidate Starts for Morrill_48:
(19, 50545), (Start: 25 @50575 has 16 MA's), (36, 50650), (39, 50677), (48, 50785), (51, 50815),

Gene: Mudcat_44 Start: 32341, Stop: 32697, Start Num: 14
Candidate Starts for Mudcat_44:
(12, 32326), (Start: 14 @32341 has 20 MA's), (26, 32428), (33, 32464), (41, 32560), (45, 32593), (47, 32614),

Gene: Muglass_47 Start: 32771, Stop: 33115, Start Num: 13
Candidate Starts for Muglass_47:
(11, 32756), (Start: 13 @32771 has 10 MA's), (33, 32894), (41, 32999),

Gene: NapoleonB_47 Start: 31451, Stop: 31807, Start Num: 14
Candidate Starts for NapoleonB_47:
(12, 31436), (Start: 14 @31451 has 20 MA's), (26, 31538), (33, 31574), (47, 31724),

Gene: Nason_47 Start: 31488, Stop: 31844, Start Num: 14
Candidate Starts for Nason_47:
(12, 31473), (Start: 14 @31488 has 20 MA's), (26, 31575), (33, 31611), (41, 31707), (45, 31740), (47, 31761),

Gene: Navi1117_46 Start: 32115, Stop: 32462, Start Num: 13
Candidate Starts for Navi1117_46:
(2, 32004), (3, 32016), (Start: 13 @32115 has 10 MA's), (33, 32241), (34, 32265), (41, 32346),

Gene: Nellie_8 Start: 4006, Stop: 4347, Start Num: 22
Candidate Starts for Nellie_8:
(Start: 22 @4006 has 6 MA's), (32, 4054), (50, 4252),

Gene: Phaby_45 Start: 33194, Stop: 33514, Start Num: 22
Candidate Starts for Phaby_45:

(16, 33128), (21, 33176), (Start: 22 @33194 has 6 MA's), (41, 33335),

Gene: Phaila_47 Start: 31602, Stop: 31949, Start Num: 13

Candidate Starts for Phaila_47:

(10, 31587), (Start: 13 @31602 has 10 MA's), (33, 31728), (34, 31752), (41, 31833),

Gene: Pharky_50 Start: 51140, Stop: 51409, Start Num: 25

Candidate Starts for Pharky_50:

(19, 51110), (Start: 25 @51140 has 16 MA's), (36, 51215), (48, 51350), (51, 51380),

Gene: Phedro_50 Start: 51140, Stop: 51409, Start Num: 25

Candidate Starts for Phedro_50:

(19, 51110), (Start: 25 @51140 has 16 MA's), (36, 51215), (48, 51350), (51, 51380),

Gene: Phractured_50 Start: 51140, Stop: 51409, Start Num: 25

Candidate Starts for Phractured_50:

(19, 51110), (Start: 25 @51140 has 16 MA's), (36, 51215), (48, 51350), (51, 51380),

Gene: PhriedRice_51 Start: 51244, Stop: 51513, Start Num: 25

Candidate Starts for PhriedRice_51:

(19, 51214), (Start: 25 @51244 has 16 MA's), (36, 51319), (48, 51454), (51, 51484),

Gene: Phroglets_6 Start: 3739, Stop: 4023, Start Num: 24

Candidate Starts for Phroglets_6:

(23, 3736), (Start: 24 @3739 has 1 MA's),

Gene: PoeMe_45 Start: 31971, Stop: 32318, Start Num: 13

Candidate Starts for PoeMe_45:

(Start: 13 @31971 has 10 MA's), (Start: 15 @31980 has 1 MA's), (31, 32091), (33, 32097), (41, 32202),

Gene: Raunak_44 Start: 30260, Stop: 30571, Start Num: 20

Candidate Starts for Raunak_44:

(1, 30041), (4, 30104), (7, 30152), (Start: 20 @30260 has 1 MA's), (44, 30452), (52, 30563),

Gene: Renaldo_50 Start: 33310, Stop: 33654, Start Num: 13

Candidate Starts for Renaldo_50:

(11, 33295), (Start: 13 @33310 has 10 MA's), (33, 33433), (41, 33538),

Gene: RicoCaldo_50 Start: 51222, Stop: 51491, Start Num: 25

Candidate Starts for RicoCaldo_50:

(Start: 25 @51222 has 16 MA's), (36, 51297), (48, 51432), (51, 51462),

Gene: Spain_44 Start: 30562, Stop: 30873, Start Num: 20

Candidate Starts for Spain_44:

(1, 30343), (4, 30406), (7, 30454), (Start: 20 @30562 has 1 MA's), (44, 30754), (52, 30865),

Gene: StagePhright_50 Start: 51140, Stop: 51409, Start Num: 25

Candidate Starts for StagePhright_50:

(19, 51110), (Start: 25 @51140 has 16 MA's), (36, 51215), (48, 51350), (51, 51380),

Gene: Stardom_44 Start: 30099, Stop: 30455, Start Num: 14

Candidate Starts for Stardom_44:

(Start: 14 @30099 has 20 MA's), (26, 30186), (33, 30222), (47, 30372),

Gene: Stardrop_49 Start: 32164, Stop: 32511, Start Num: 13
Candidate Starts for Stardrop_49:
(Start: 13 @32164 has 10 MA's), (31, 32284), (33, 32290), (41, 32395),

Gene: Sunny4976_47 Start: 33511, Stop: 33849, Start Num: 17
Candidate Starts for Sunny4976_47:
(17, 33511), (35, 33646), (41, 33721),

Gene: Tenney120_46 Start: 32008, Stop: 32355, Start Num: 13
Candidate Starts for Tenney120_46:
(Start: 13 @32008 has 10 MA's), (33, 32134), (41, 32239), (46, 32278),

Gene: ThirteenKH_52 Start: 50584, Stop: 50853, Start Num: 25
Candidate Starts for ThirteenKH_52:
(19, 50554), (Start: 25 @50584 has 16 MA's), (36, 50659), (39, 50686), (48, 50794), (51, 50824),

Gene: Tribby_47 Start: 31189, Stop: 31545, Start Num: 14
Candidate Starts for Tribby_47:
(Start: 14 @31189 has 20 MA's), (19, 31237), (33, 31312), (41, 31408), (42, 31411), (47, 31462),

Gene: TrippleS_50 Start: 50733, Stop: 51002, Start Num: 25
Candidate Starts for TrippleS_50:
(19, 50703), (Start: 25 @50733 has 16 MA's), (39, 50835), (48, 50943), (51, 50973),

Gene: TrixiePhattel_46 Start: 31685, Stop: 32023, Start Num: 15
Candidate Starts for TrixiePhattel_46:
(Start: 15 @31685 has 1 MA's), (Start: 24 @31757 has 1 MA's), (33, 31802), (41, 31907),

Gene: Uzumaki_43 Start: 31702, Stop: 32049, Start Num: 13
Candidate Starts for Uzumaki_43:
(10, 31687), (Start: 13 @31702 has 10 MA's), (33, 31828), (34, 31852), (41, 31933), (46, 31972),

Gene: Xenomorph_43 Start: 30900, Stop: 31256, Start Num: 14
Candidate Starts for Xenomorph_43:
(Start: 14 @30900 has 20 MA's), (33, 31023), (41, 31119), (47, 31173),

Gene: Yafa_52 Start: 50488, Stop: 50757, Start Num: 25
Candidate Starts for Yafa_52:
(19, 50458), (Start: 25 @50488 has 16 MA's), (39, 50590), (48, 50698), (51, 50728),

Gene: YoshiYama_47 Start: 31483, Stop: 31839, Start Num: 14
Candidate Starts for YoshiYama_47:
(12, 31468), (Start: 14 @31483 has 20 MA's), (26, 31570), (33, 31606), (41, 31702), (45, 31735), (47, 31756),

Gene: Zeina_46 Start: 32021, Stop: 32368, Start Num: 13
Candidate Starts for Zeina_46:
(Start: 13 @32021 has 10 MA's), (31, 32141), (33, 32147), (41, 32252), (46, 32291),