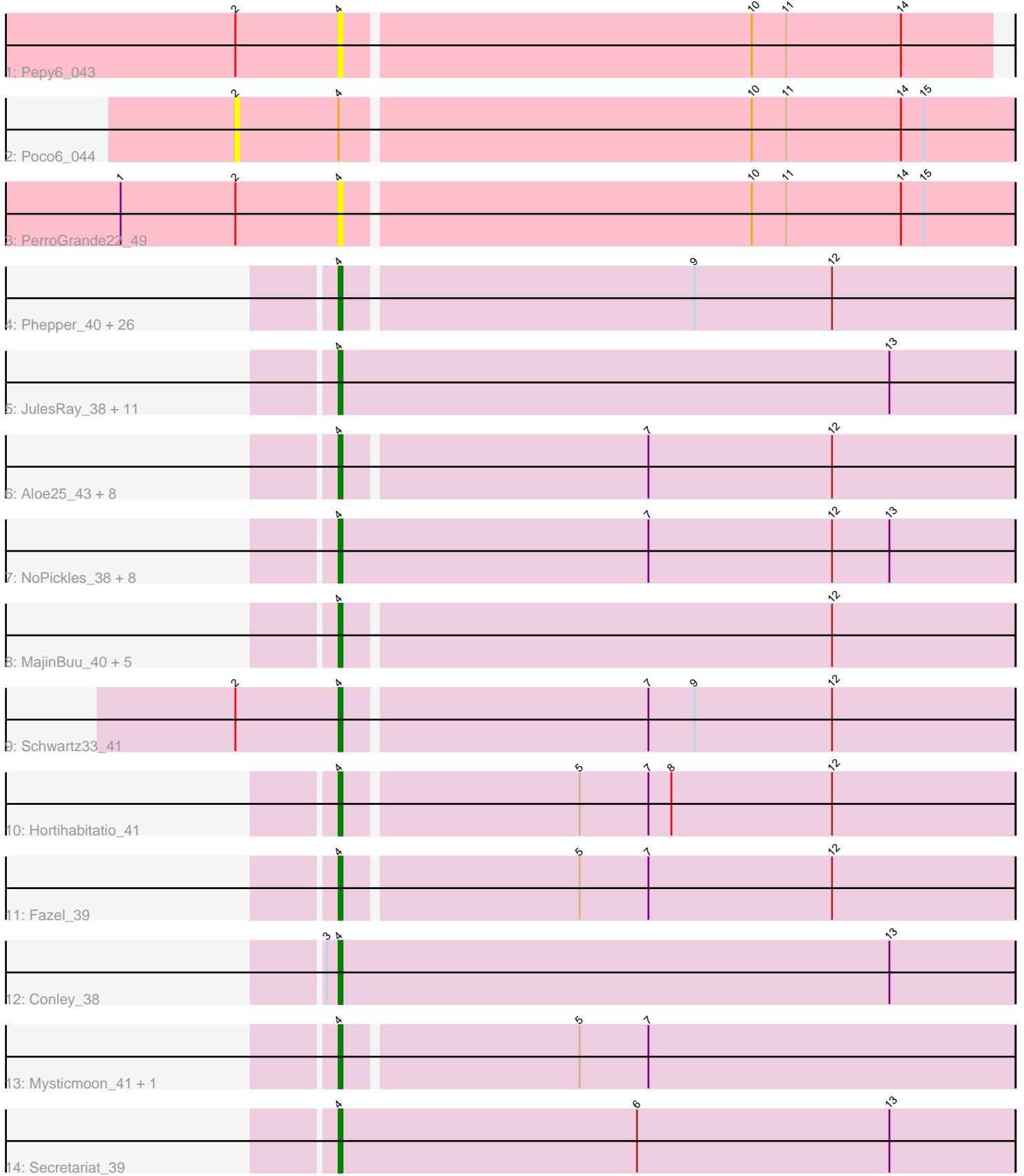


Pham 294684



Note: Tracks are now grouped by subcluster and scaled. Switching in subcluster is indicated by changes in track color. Track scale is now set by default to display the region 30 bp upstream of start 1 to 30 bp downstream of the last possible start. If this default region is judged to be packed too tightly with annotated starts, the track will be further scaled to only show that region of the ORF with annotated starts. This action will be indicated by adding "Zoomed" to the title. For starts, yellow indicates the location of called starts comprised solely of Glimmer/GeneMark auto-annotations, green indicates the location of called starts with at least 1 manual gene annotation.

Pham 294684 Report

This analysis was run 04/18/26 on database version 643.

Pham number 294684 has 73 members, 19 are drafts.

Phages represented in each track:

- Track 1 : Pepy6_043
- Track 2 : Poco6_044
- Track 3 : PerroGrande22_49
- Track 4 : Phepper_40, Untouchable_40, AlainaMarie_39, BluerMoon_39, Dialga_41, Burley_40, Arataki_39, Kenosha_40, Duffington_38, Demure_38, Chikenjars_39, Nadmeg_41, Zeph_41, Runhaar_40, CWormy_39, Eddiemania_41, Tonaltzin_41, ArtetaBall_41, Luthien_41, Citrus_39, Glintora_41, Madvan_40, Vardy_40, Hydrus_41, Nithya_39, EndAve_40, Crocheter_40
- Track 5 : JulesRay_38, Bugg_39, Dancer_38, Petite_40, Artorias_38, Tairn4Wing_41, Avazak_39, Captrips_38, Trufflozitus_42, FortCran_38, ChickyNuggy_40, Football_40
- Track 6 : Aloe25_43, SweetCrkHerbs_40, Rickmore_37, Perkunas_40, Gusicorn_40, PestoPenguin_44, Talon44_40, BetterYeti_40, ShaggyRogers_41
- Track 7 : NoPickles_38, Kerry_38, Magel_40, Capybara_39, Gill_39, Tanis_39, Roney_39, Gravy_38, Odesza_38
- Track 8 : MajinBuu_40, Figliar_40, Aflac_39, OlgasClover_40, Jodelie19_41, TenaciousP_40
- Track 9 : Schwartz33_41
- Track 10 : Hortihabitatio_41
- Track 11 : Fazel_39
- Track 12 : Conley_38
- Track 13 : Mysticmoon_41, Pherobrine_41
- Track 14 : Secretariat_39

Summary of Final Annotations (See graph section above for start numbers):

The start number called the most often in the published annotations is 4, it was called in 54 of the 54 non-draft genes in the pham.

Genes that call this "Most Annotated" start:

- Aflac_39, AlainaMarie_39, Aloe25_43, Arataki_39, ArtetaBall_41, Artorias_38, Avazak_39, BetterYeti_40, BluerMoon_39, Bugg_39, Burley_40, CWormy_39, Captrips_38, Capybara_39, ChickyNuggy_40, Chikenjars_39, Citrus_39, Conley_38, Crocheter_40, Dancer_38, Demure_38, Dialga_41, Duffington_38, Eddiemania_41,

EndAve_40, Fazel_39, Figliar_40, Football_40, FortCran_38, Gill_39, Glintora_41, Gravy_38, Gusicorn_40, Hortihabitatio_41, Hydrus_41, Jodelie19_41, JulesRay_38, Kenosha_40, Kerry_38, Luthien_41, Madvan_40, Magel_40, MajinBuu_40, Mysticmoon_41, Nadmeg_41, Nithya_39, NoPickles_38, Odesza_38, OlgasClover_40, Pepy6_043, Perkunas_40, PerroGrande22_49, PestoPenguin_44, Petite_40, Phepper_40, Pherobrine_41, Rickmore_37, Roney_39, Runhaar_40, Schwartz33_41, Secretariat_39, ShaggyRogers_41, SweetCrkHerbs_40, Tairn4Wing_41, Talon44_40, Tanis_39, TenaciousP_40, Tonaltzin_41, Trufflozitus_42, Untouchable_40, Vardy_40, Zeph_41,

Genes that have the "Most Annotated" start but do not call it:

- Poco6_044,

Genes that do not have the "Most Annotated" start:

-

Summary by start number:

Start 2:

- Found in 4 of 73 (5.5%) of genes in pham
- No Manual Annotations of this start.
- Called 25.0% of time when present
- Phage (with cluster) where this start called: Poco6_044 (CC),

Start 4:

- Found in 73 of 73 (100.0%) of genes in pham
- Manual Annotations of this start: 54 of 54
- Called 98.6% of time when present
- Phage (with cluster) where this start called: Aflac_39 (DJ), AlainaMarie_39 (DJ), Aloe25_43 (DJ), Arataki_39 (DJ), ArtetaBall_41 (DJ), Artorias_38 (DJ), Avazak_39 (DJ), BetterYeti_40 (DJ), BluerMoon_39 (DJ), Bugg_39 (DJ), Burley_40 (DJ), CWormy_39 (DJ), Captrips_38 (DJ), Capybara_39 (DJ), ChickyNugget_40 (DJ), Chickenjars_39 (DJ), Citrus_39 (DJ), Conley_38 (DJ), Crocheter_40 (DJ), Dancer_38 (DJ), Demure_38 (DJ), Dialga_41 (DJ), Duffington_38 (DJ), Eddiemania_41 (DJ), EndAve_40 (DJ), Fazel_39 (DJ), Figliar_40 (DJ), Football_40 (DJ), FortCran_38 (DJ), Gill_39 (DJ), Glintora_41 (DJ), Gravy_38 (DJ), Gusicorn_40 (DJ), Hortihabitatio_41 (DJ), Hydrus_41 (DJ), Jodelie19_41 (DJ), JulesRay_38 (DJ), Kenosha_40 (DJ), Kerry_38 (DJ), Luthien_41 (DJ), Madvan_40 (DJ), Magel_40 (DJ), MajinBuu_40 (DJ), Mysticmoon_41 (DJ), Nadmeg_41 (DJ), Nithya_39 (DJ), NoPickles_38 (DJ), Odesza_38 (DJ), OlgasClover_40 (DJ), Pepy6_043 (CC), Perkunas_40 (DJ), PerroGrande22_49 (CC), PestoPenguin_44 (DJ), Petite_40 (DJ), Phepper_40 (DJ), Pherobrine_41 (DJ), Rickmore_37 (DJ), Roney_39 (DJ), Runhaar_40 (DJ), Schwartz33_41 (DJ), Secretariat_39 (DJ), ShaggyRogers_41 (DJ), SweetCrkHerbs_40 (DJ), Tairn4Wing_41 (DJ), Talon44_40 (DJ), Tanis_39 (DJ), TenaciousP_40 (DJ), Tonaltzin_41 (DJ), Trufflozitus_42 (DJ), Untouchable_40 (DJ), Vardy_40 (DJ), Zeph_41 (DJ),

Summary by clusters:

There are 2 clusters represented in this pham: CC, DJ,

Info for manual annotations of cluster DJ:

- Start number 4 was manually annotated 54 times for cluster DJ.

Gene Information:

Gene: Aflac_39 Start: 32676, Stop: 32849, Start Num: 4

Candidate Starts for Aflac_39:

(Start: 4 @32676 has 54 MA's), (12, 32802),

Gene: AlainaMarie_39 Start: 32655, Stop: 32828, Start Num: 4

Candidate Starts for AlainaMarie_39:

(Start: 4 @32655 has 54 MA's), (9, 32745), (12, 32781),

Gene: Aloe25_43 Start: 32722, Stop: 32895, Start Num: 4

Candidate Starts for Aloe25_43:

(Start: 4 @32722 has 54 MA's), (7, 32800), (12, 32848),

Gene: Arataki_39 Start: 32015, Stop: 32188, Start Num: 4

Candidate Starts for Arataki_39:

(Start: 4 @32015 has 54 MA's), (9, 32105), (12, 32141),

Gene: ArtetaBall_41 Start: 33215, Stop: 33388, Start Num: 4

Candidate Starts for ArtetaBall_41:

(Start: 4 @33215 has 54 MA's), (9, 33305), (12, 33341),

Gene: Artorias_38 Start: 30361, Stop: 30537, Start Num: 4

Candidate Starts for Artorias_38:

(Start: 4 @30361 has 54 MA's), (13, 30505),

Gene: Avazak_39 Start: 30729, Stop: 30905, Start Num: 4

Candidate Starts for Avazak_39:

(Start: 4 @30729 has 54 MA's), (13, 30873),

Gene: BetterYeti_40 Start: 32721, Stop: 32894, Start Num: 4

Candidate Starts for BetterYeti_40:

(Start: 4 @32721 has 54 MA's), (7, 32799), (12, 32847),

Gene: BluerMoon_39 Start: 32673, Stop: 32846, Start Num: 4

Candidate Starts for BluerMoon_39:

(Start: 4 @32673 has 54 MA's), (9, 32763), (12, 32799),

Gene: Bugg_39 Start: 30408, Stop: 30584, Start Num: 4

Candidate Starts for Bugg_39:

(Start: 4 @30408 has 54 MA's), (13, 30552),

Gene: Burley_40 Start: 32679, Stop: 32852, Start Num: 4

Candidate Starts for Burley_40:

(Start: 4 @32679 has 54 MA's), (9, 32769), (12, 32805),

Gene: CWormy_39 Start: 32380, Stop: 32553, Start Num: 4

Candidate Starts for CWormy_39:

(Start: 4 @32380 has 54 MA's), (9, 32470), (12, 32506),

Gene: Captrips_38 Start: 30401, Stop: 30577, Start Num: 4
Candidate Starts for Captrips_38:
(Start: 4 @30401 has 54 MA's), (13, 30545),

Gene: Copybara_39 Start: 30791, Stop: 30967, Start Num: 4
Candidate Starts for Copybara_39:
(Start: 4 @30791 has 54 MA's), (7, 30872), (12, 30920), (13, 30935),

Gene: ChickyNuggy_40 Start: 30470, Stop: 30646, Start Num: 4
Candidate Starts for ChickyNuggy_40:
(Start: 4 @30470 has 54 MA's), (13, 30614),

Gene: Chikenjars_39 Start: 32666, Stop: 32839, Start Num: 4
Candidate Starts for Chikenjars_39:
(Start: 4 @32666 has 54 MA's), (9, 32756), (12, 32792),

Gene: Citrus_39 Start: 32942, Stop: 33115, Start Num: 4
Candidate Starts for Citrus_39:
(Start: 4 @32942 has 54 MA's), (9, 33032), (12, 33068),

Gene: Conley_38 Start: 31332, Stop: 31508, Start Num: 4
Candidate Starts for Conley_38:
(3, 31329), (Start: 4 @31332 has 54 MA's), (13, 31476),

Gene: Crocheter_40 Start: 33073, Stop: 33246, Start Num: 4
Candidate Starts for Crocheter_40:
(Start: 4 @33073 has 54 MA's), (9, 33163), (12, 33199),

Gene: Dancer_38 Start: 30101, Stop: 30277, Start Num: 4
Candidate Starts for Dancer_38:
(Start: 4 @30101 has 54 MA's), (13, 30245),

Gene: Demure_38 Start: 32015, Stop: 32188, Start Num: 4
Candidate Starts for Demure_38:
(Start: 4 @32015 has 54 MA's), (9, 32105), (12, 32141),

Gene: Dialga_41 Start: 33234, Stop: 33407, Start Num: 4
Candidate Starts for Dialga_41:
(Start: 4 @33234 has 54 MA's), (9, 33324), (12, 33360),

Gene: Duffington_38 Start: 32328, Stop: 32501, Start Num: 4
Candidate Starts for Duffington_38:
(Start: 4 @32328 has 54 MA's), (9, 32418), (12, 32454),

Gene: Eddiemania_41 Start: 33582, Stop: 33755, Start Num: 4
Candidate Starts for Eddiemania_41:
(Start: 4 @33582 has 54 MA's), (9, 33672), (12, 33708),

Gene: EndAve_40 Start: 32835, Stop: 33008, Start Num: 4
Candidate Starts for EndAve_40:
(Start: 4 @32835 has 54 MA's), (9, 32925), (12, 32961),

Gene: Fazel_39 Start: 32311, Stop: 32484, Start Num: 4
Candidate Starts for Fazel_39:
(Start: 4 @32311 has 54 MA's), (5, 32371), (7, 32389), (12, 32437),

Gene: Figliar_40 Start: 32982, Stop: 33155, Start Num: 4
Candidate Starts for Figliar_40:
(Start: 4 @32982 has 54 MA's), (12, 33108),

Gene: Football_40 Start: 30107, Stop: 30283, Start Num: 4
Candidate Starts for Football_40:
(Start: 4 @30107 has 54 MA's), (13, 30251),

Gene: FortCran_38 Start: 30361, Stop: 30537, Start Num: 4
Candidate Starts for FortCran_38:
(Start: 4 @30361 has 54 MA's), (13, 30505),

Gene: Gill_39 Start: 30808, Stop: 30984, Start Num: 4
Candidate Starts for Gill_39:
(Start: 4 @30808 has 54 MA's), (7, 30889), (12, 30937), (13, 30952),

Gene: Glintora_41 Start: 33299, Stop: 33472, Start Num: 4
Candidate Starts for Glintora_41:
(Start: 4 @33299 has 54 MA's), (9, 33389), (12, 33425),

Gene: Gravy_38 Start: 30481, Stop: 30657, Start Num: 4
Candidate Starts for Gravy_38:
(Start: 4 @30481 has 54 MA's), (7, 30562), (12, 30610), (13, 30625),

Gene: Gusicorn_40 Start: 32722, Stop: 32895, Start Num: 4
Candidate Starts for Gusicorn_40:
(Start: 4 @32722 has 54 MA's), (7, 32800), (12, 32848),

Gene: Hortihabitatio_41 Start: 32758, Stop: 32931, Start Num: 4
Candidate Starts for Hortihabitatio_41:
(Start: 4 @32758 has 54 MA's), (5, 32818), (7, 32836), (8, 32842), (12, 32884),

Gene: Hydrus_41 Start: 33591, Stop: 33764, Start Num: 4
Candidate Starts for Hydrus_41:
(Start: 4 @33591 has 54 MA's), (9, 33681), (12, 33717),

Gene: Jodelie19_41 Start: 34437, Stop: 34610, Start Num: 4
Candidate Starts for Jodelie19_41:
(Start: 4 @34437 has 54 MA's), (12, 34563),

Gene: JulesRay_38 Start: 30395, Stop: 30571, Start Num: 4
Candidate Starts for JulesRay_38:
(Start: 4 @30395 has 54 MA's), (13, 30539),

Gene: Kenosha_40 Start: 33483, Stop: 33656, Start Num: 4
Candidate Starts for Kenosha_40:
(Start: 4 @33483 has 54 MA's), (9, 33573), (12, 33609),

Gene: Kerry_38 Start: 30481, Stop: 30657, Start Num: 4

Candidate Starts for Kerry_38:
(Start: 4 @30481 has 54 MA's), (7, 30562), (12, 30610), (13, 30625),

Gene: Luthien_41 Start: 32833, Stop: 33006, Start Num: 4
Candidate Starts for Luthien_41:
(Start: 4 @32833 has 54 MA's), (9, 32923), (12, 32959),

Gene: Madvan_40 Start: 32714, Stop: 32887, Start Num: 4
Candidate Starts for Madvan_40:
(Start: 4 @32714 has 54 MA's), (9, 32804), (12, 32840),

Gene: Magel_40 Start: 30712, Stop: 30888, Start Num: 4
Candidate Starts for Magel_40:
(Start: 4 @30712 has 54 MA's), (7, 30793), (12, 30841), (13, 30856),

Gene: MajinBuu_40 Start: 33009, Stop: 33182, Start Num: 4
Candidate Starts for MajinBuu_40:
(Start: 4 @33009 has 54 MA's), (12, 33135),

Gene: Mysticmoon_41 Start: 33056, Stop: 33229, Start Num: 4
Candidate Starts for Mysticmoon_41:
(Start: 4 @33056 has 54 MA's), (5, 33116), (7, 33134),

Gene: Nadmeg_41 Start: 34146, Stop: 34319, Start Num: 4
Candidate Starts for Nadmeg_41:
(Start: 4 @34146 has 54 MA's), (9, 34236), (12, 34272),

Gene: Nithya_39 Start: 32656, Stop: 32829, Start Num: 4
Candidate Starts for Nithya_39:
(Start: 4 @32656 has 54 MA's), (9, 32746), (12, 32782),

Gene: NoPickles_38 Start: 30113, Stop: 30289, Start Num: 4
Candidate Starts for NoPickles_38:
(Start: 4 @30113 has 54 MA's), (7, 30194), (12, 30242), (13, 30257),

Gene: Odesza_38 Start: 30482, Stop: 30658, Start Num: 4
Candidate Starts for Odesza_38:
(Start: 4 @30482 has 54 MA's), (7, 30563), (12, 30611), (13, 30626),

Gene: OlgasClover_40 Start: 33721, Stop: 33894, Start Num: 4
Candidate Starts for OlgasClover_40:
(Start: 4 @33721 has 54 MA's), (12, 33847),

Gene: Pepy6_043 Start: 39982, Stop: 40149, Start Num: 4
Candidate Starts for Pepy6_043:
(2, 39955), (Start: 4 @39982 has 54 MA's), (10, 40087), (11, 40096), (14, 40126),

Gene: Perkunas_40 Start: 30763, Stop: 30936, Start Num: 4
Candidate Starts for Perkunas_40:
(Start: 4 @30763 has 54 MA's), (7, 30844), (12, 30892),

Gene: PerroGrande22_49 Start: 42016, Stop: 42189, Start Num: 4
Candidate Starts for PerroGrande22_49:

(1, 41959), (2, 41989), (Start: 4 @42016 has 54 MA's), (10, 42121), (11, 42130), (14, 42160), (15, 42166),

Gene: PestoPenguin_44 Start: 32722, Stop: 32895, Start Num: 4
Candidate Starts for PestoPenguin_44:
(Start: 4 @32722 has 54 MA's), (7, 32800), (12, 32848),

Gene: Petito_40 Start: 31866, Stop: 32042, Start Num: 4
Candidate Starts for Petito_40:
(Start: 4 @31866 has 54 MA's), (13, 32010),

Gene: Phepper_40 Start: 32713, Stop: 32886, Start Num: 4
Candidate Starts for Phepper_40:
(Start: 4 @32713 has 54 MA's), (9, 32803), (12, 32839),

Gene: Pherobrine_41 Start: 33357, Stop: 33530, Start Num: 4
Candidate Starts for Pherobrine_41:
(Start: 4 @33357 has 54 MA's), (5, 33417), (7, 33435),

Gene: Poco6_044 Start: 42042, Stop: 42242, Start Num: 2
Candidate Starts for Poco6_044:
(2, 42042), (Start: 4 @42069 has 54 MA's), (10, 42174), (11, 42183), (14, 42213), (15, 42219),

Gene: Rickmore_37 Start: 30767, Stop: 30940, Start Num: 4
Candidate Starts for Rickmore_37:
(Start: 4 @30767 has 54 MA's), (7, 30845), (12, 30893),

Gene: Roney_39 Start: 30803, Stop: 30979, Start Num: 4
Candidate Starts for Roney_39:
(Start: 4 @30803 has 54 MA's), (7, 30884), (12, 30932), (13, 30947),

Gene: Runhaar_40 Start: 32714, Stop: 32887, Start Num: 4
Candidate Starts for Runhaar_40:
(Start: 4 @32714 has 54 MA's), (9, 32804), (12, 32840),

Gene: Schwartz33_41 Start: 33151, Stop: 33324, Start Num: 4
Candidate Starts for Schwartz33_41:
(2, 33124), (Start: 4 @33151 has 54 MA's), (7, 33229), (9, 33241), (12, 33277),

Gene: Secretariat_39 Start: 32092, Stop: 32268, Start Num: 4
Candidate Starts for Secretariat_39:
(Start: 4 @32092 has 54 MA's), (6, 32170), (13, 32236),

Gene: ShaggyRogers_41 Start: 32720, Stop: 32893, Start Num: 4
Candidate Starts for ShaggyRogers_41:
(Start: 4 @32720 has 54 MA's), (7, 32798), (12, 32846),

Gene: SweetCrkHerbs_40 Start: 30436, Stop: 30609, Start Num: 4
Candidate Starts for SweetCrkHerbs_40:
(Start: 4 @30436 has 54 MA's), (7, 30517), (12, 30565),

Gene: Tairn4Wing_41 Start: 30751, Stop: 30927, Start Num: 4
Candidate Starts for Tairn4Wing_41:

(Start: 4 @30751 has 54 MA's), (13, 30895),

Gene: Talon44_40 Start: 30778, Stop: 30951, Start Num: 4

Candidate Starts for Talon44_40:

(Start: 4 @30778 has 54 MA's), (7, 30859), (12, 30907),

Gene: Tanis_39 Start: 30654, Stop: 30830, Start Num: 4

Candidate Starts for Tanis_39:

(Start: 4 @30654 has 54 MA's), (7, 30735), (12, 30783), (13, 30798),

Gene: TenaciousP_40 Start: 34101, Stop: 34274, Start Num: 4

Candidate Starts for TenaciousP_40:

(Start: 4 @34101 has 54 MA's), (12, 34227),

Gene: Tonaltzin_41 Start: 32671, Stop: 32844, Start Num: 4

Candidate Starts for Tonaltzin_41:

(Start: 4 @32671 has 54 MA's), (9, 32761), (12, 32797),

Gene: Trufflozitus_42 Start: 30752, Stop: 30928, Start Num: 4

Candidate Starts for Trufflozitus_42:

(Start: 4 @30752 has 54 MA's), (13, 30896),

Gene: Untouchable_40 Start: 33073, Stop: 33246, Start Num: 4

Candidate Starts for Untouchable_40:

(Start: 4 @33073 has 54 MA's), (9, 33163), (12, 33199),

Gene: Vardy_40 Start: 32680, Stop: 32853, Start Num: 4

Candidate Starts for Vardy_40:

(Start: 4 @32680 has 54 MA's), (9, 32770), (12, 32806),

Gene: Zeph_41 Start: 33571, Stop: 33744, Start Num: 4

Candidate Starts for Zeph_41:

(Start: 4 @33571 has 54 MA's), (9, 33661), (12, 33697),