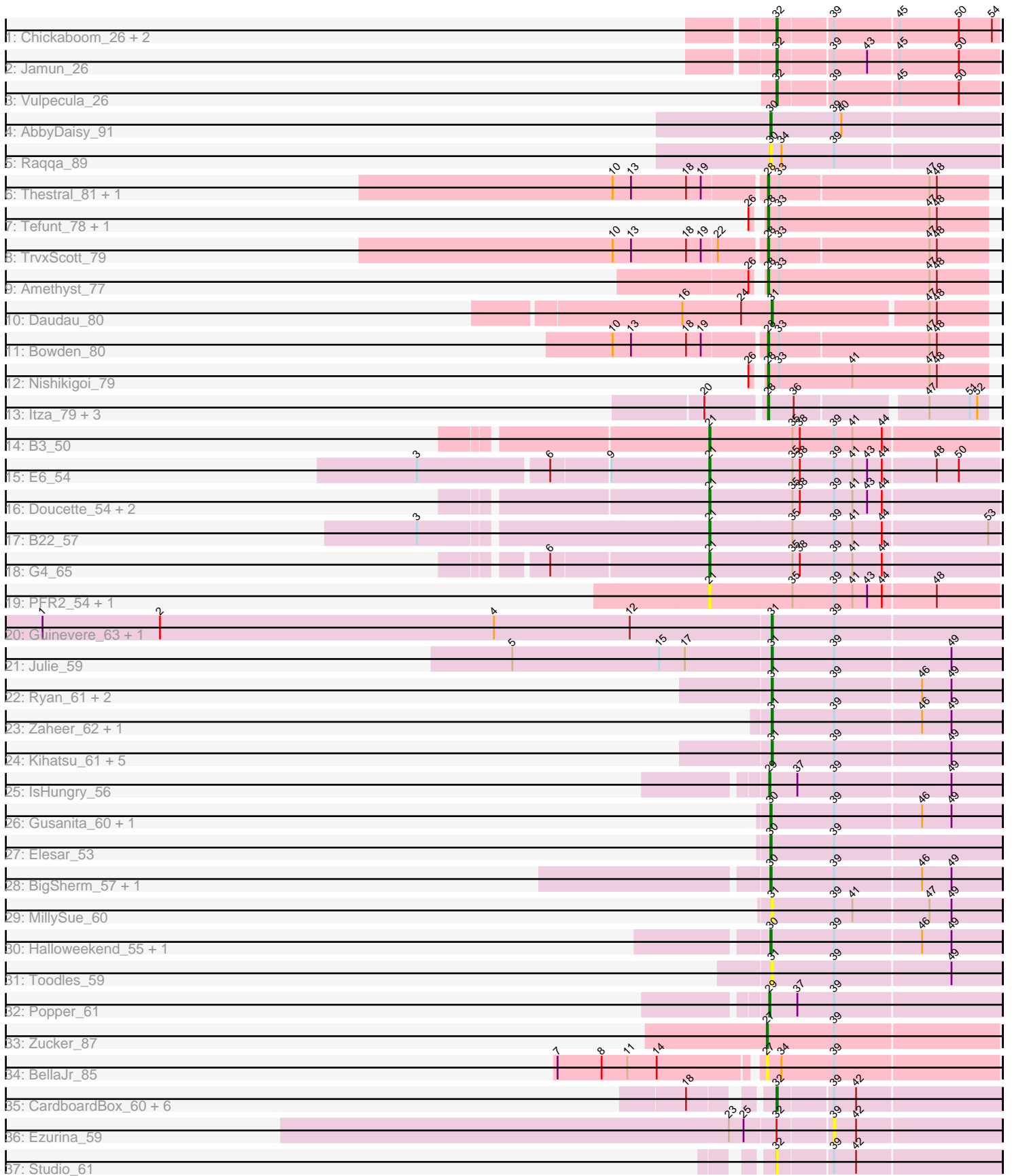


Pham 294723



Note: Tracks are now grouped by subcluster and scaled. Switching in subcluster is indicated by changes in track color. Track scale is now set by default to display the region 30 bp upstream of start 1 to 30 bp downstream of the last possible start. If this default region is judged to be packed too tightly with annotated starts, the track will be further scaled to only show that region of the ORF with annotated starts. This action will be indicated by adding "Zoomed" to the title. For starts, yellow indicates the location of called starts comprised solely of Glimmer/GeneMark auto-annotations, green indicates the location of called starts with at least 1 manual gene annotation.

Pham 294723 Report

This analysis was run 04/18/26 on database version 643.

Pham number 294723 has 65 members, 21 are drafts.

Phages represented in each track:

- Track 1 : Chickaboom_26, Brynnie_26, WileyE_26
- Track 2 : Jamun_26
- Track 3 : Vulpecula_26
- Track 4 : AbbyDaisy_91
- Track 5 : Raqqa_89
- Track 6 : Thestral_81, TinaBelcher_79
- Track 7 : Tefunt_78, Haizum_78
- Track 8 : TrvxScott_79
- Track 9 : Amethyst_77
- Track 10 : Daudau_80
- Track 11 : Bowden_80
- Track 12 : Nishikigoi_79
- Track 13 : Itza_79, VieEnRose_77, Celia_76, Urza_78
- Track 14 : B3_50
- Track 15 : E6_54
- Track 16 : Doucette_54, Anatole_48, E1_48
- Track 17 : B22_57
- Track 18 : G4_65
- Track 19 : PFR2_54, PFR1_52
- Track 20 : Guinevere_63, GoodLuckBabe_61
- Track 21 : Julie_59
- Track 22 : Ryan_61, QuinnAvery_62, Yonex_61
- Track 23 : Zaheer_62, Schism_62
- Track 24 : Kihatsu_61, ToastyOats_60, Nandita_60, Dirdigger_57, Lenoxika_57, lchiang_57
- Track 25 : IsHungry_56
- Track 26 : Gusanita_60, Donatella_60
- Track 27 : Elesar_53
- Track 28 : BigSherm_57, Cole_56
- Track 29 : MillySue_60
- Track 30 : Halloween_55, Saintcarr_59
- Track 31 : Toodles_59
- Track 32 : Popper_61
- Track 33 : Zucker_87
- Track 34 : BellaJr_85
- Track 35 : CardboardBox_60, Roberts_59, ChipsNGuac_60, Neuville_59, ChamoyPickle_61, Gerri43_60, AnnabelLee_61

- Track 36 : Ezurina_59
- Track 37 : Studio_61

Summary of Final Annotations (See graph section above for start numbers):

The start number called the most often in the published annotations is 28, it was called in 12 of the 44 non-draft genes in the pham.

Genes that call this "Most Annotated" start:

- Amethyst_77, Bowden_80, Celia_76, Haizum_78, Itza_79, Nishikigoi_79, Tefunt_78, Thestral_81, TinaBelcher_79, TrvxScott_79, Urza_78, VieEnRose_77,

Genes that have the "Most Annotated" start but do not call it:

-

Genes that do not have the "Most Annotated" start:

- AbbyDaisy_91, Anatole_48, AnnabelLee_61, B22_57, B3_50, BellaJr_85, BigSherm_57, Brynnie_26, CardboardBox_60, ChamoyPickle_61, Chickaboom_26, ChipsNGuac_60, Cole_56, Daudau_80, Dirtdigger_57, Donatella_60, Doucette_54, E1_48, E6_54, Elesar_53, Ezurina_59, G4_65, Gerri43_60, GoodLuckBabe_61, Guinevere_63, Gusanita_60, Halloweekend_55, Ichiang_57, IsHungry_56, Jamun_26, Julie_59, Kihatsu_61, Lenoxika_57, MillySue_60, Nandita_60, Neuville_59, PFR1_52, PFR2_54, Popper_61, QuinnAvery_62, Raqqa_89, Roberts_59, Ryan_61, Saintcarr_59, Schism_62, Studio_61, ToastyOats_60, Toodles_59, Vulpecula_26, WileyE_26, Yonex_61, Zaheer_62, Zucker_87,

Summary by start number:

Start 21:

- Found in 9 of 65 (13.8%) of genes in pham
- Manual Annotations of this start: 7 of 44
- Called 100.0% of time when present
- Phage (with cluster) where this start called: Anatole_48 (BV), B22_57 (BW), B3_50 (BV), Doucette_54 (BW), E1_48 (BV), E6_54 (BW), G4_65 (BW), PFR1_52 (BX), PFR2_54 (BX),

Start 27:

- Found in 2 of 65 (3.1%) of genes in pham
- Manual Annotations of this start: 1 of 44
- Called 100.0% of time when present
- Phage (with cluster) where this start called: BellaJr_85 (FN), Zucker_87 (FN),

Start 28:

- Found in 12 of 65 (18.5%) of genes in pham
- Manual Annotations of this start: 12 of 44
- Called 100.0% of time when present
- Phage (with cluster) where this start called: Amethyst_77 (BD2), Bowden_80 (BD2), Celia_76 (BD6), Haizum_78 (BD2), Itza_79 (BD6), Nishikigoi_79 (BD2), Tefunt_78 (BD2), Thestral_81 (BD2), TinaBelcher_79 (BD2), TrvxScott_79 (BD2), Urza_78 (BD6), VieEnRose_77 (BD6),

Start 29:

- Found in 2 of 65 (3.1%) of genes in pham
- Manual Annotations of this start: 2 of 44
- Called 100.0% of time when present
- Phage (with cluster) where this start called: IsHungry_56 (FF), Popper_61 (FF),

Start 30:

- Found in 9 of 65 (13.8%) of genes in pham
- Manual Annotations of this start: 6 of 44
- Called 100.0% of time when present
- Phage (with cluster) where this start called: AbbyDaisy_91 (AY), BigSherm_57 (FF), Cole_56 (FF), Donatella_60 (FF), Elesar_53 (FF), Gusanita_60 (FF), Halloweekend_55 (FF), Raqqa_89 (AY), Saintcarr_59 (FF),

Start 31:

- Found in 17 of 65 (26.2%) of genes in pham
- Manual Annotations of this start: 10 of 44
- Called 100.0% of time when present
- Phage (with cluster) where this start called: Daudau_80 (BD2), Dirtdigger_57 (FF), GoodLuckBabe_61 (FF), Guinevere_63 (FF), Ichiang_57 (FF), Julie_59 (FF), Kihatsu_61 (FF), Lenoxika_57 (FF), MillySue_60 (FF), Nandita_60 (FF), QuinnAvery_62 (FF), Ryan_61 (FF), Schism_62 (FF), ToastyOats_60 (FF), Toodles_59 (FF), Yonex_61 (FF), Zaheer_62 (FF),

Start 32:

- Found in 14 of 65 (21.5%) of genes in pham
- Manual Annotations of this start: 6 of 44
- Called 92.9% of time when present
- Phage (with cluster) where this start called: AnnabelLee_61 (FR), Brynnie_26 (AS1), CardboardBox_60 (FR), ChamoyPickle_61 (FR), Chickaboom_26 (AS1), ChipsNGuac_60 (FR), Gerri43_60 (FR), Jamun_26 (AS1), Neuville_59 (FR), Roberts_59 (FR), Studio_61 (FR), Vulpecula_26 (AS1), WileyE_26 (AS1),

Start 39:

- Found in 52 of 65 (80.0%) of genes in pham
- No Manual Annotations of this start.
- Called 1.9% of time when present
- Phage (with cluster) where this start called: Ezurina_59 (FR),

Summary by clusters:

There are 10 clusters represented in this pham: AS1, FR, BV, BW, BD6, FF, BD2, AY, BX, FN,

Info for manual annotations of cluster AS1:

- Start number 32 was manually annotated 5 times for cluster AS1.

Info for manual annotations of cluster AY:

- Start number 30 was manually annotated 1 time for cluster AY.

Info for manual annotations of cluster BD2:

- Start number 28 was manually annotated 8 times for cluster BD2.

- Start number 31 was manually annotated 1 time for cluster BD2.

Info for manual annotations of cluster BD6:

- Start number 28 was manually annotated 4 times for cluster BD6.

Info for manual annotations of cluster BV:

- Start number 21 was manually annotated 3 times for cluster BV.

Info for manual annotations of cluster BW:

- Start number 21 was manually annotated 4 times for cluster BW.

Info for manual annotations of cluster FF:

- Start number 29 was manually annotated 2 times for cluster FF.
- Start number 30 was manually annotated 5 times for cluster FF.
- Start number 31 was manually annotated 9 times for cluster FF.

Info for manual annotations of cluster FN:

- Start number 27 was manually annotated 1 time for cluster FN.

Info for manual annotations of cluster FR:

- Start number 32 was manually annotated 1 time for cluster FR.

Gene Information:

Gene: AbbyDaisy_91 Start: 51823, Stop: 52005, Start Num: 30

Candidate Starts for AbbyDaisy_91:

(Start: 30 @51823 has 6 MA's), (39, 51874), (40, 51880),

Gene: Amethyst_77 Start: 47739, Stop: 47560, Start Num: 28

Candidate Starts for Amethyst_77:

(26, 47745), (Start: 28 @47739 has 12 MA's), (33, 47730), (47, 47607), (48, 47601),

Gene: Anatole_48 Start: 31658, Stop: 31888, Start Num: 21

Candidate Starts for Anatole_48:

(Start: 21 @31658 has 7 MA's), (35, 31724), (38, 31730), (39, 31757), (41, 31772), (43, 31784), (44, 31796),

Gene: AnnabelLee_61 Start: 35531, Stop: 35355, Start Num: 32

Candidate Starts for AnnabelLee_61:

(18, 35582), (Start: 32 @35531 has 6 MA's), (39, 35489), (42, 35471),

Gene: B22_57 Start: 35089, Stop: 35319, Start Num: 21

Candidate Starts for B22_57:

(3, 34864), (Start: 21 @35089 has 7 MA's), (35, 35155), (39, 35188), (41, 35203), (44, 35227), (53, 35311),

Gene: B3_50 Start: 32321, Stop: 32551, Start Num: 21

Candidate Starts for B3_50:

(Start: 21 @32321 has 7 MA's), (35, 32387), (38, 32393), (39, 32420), (41, 32435), (44, 32459),

Gene: BellaJr_85 Start: 48775, Stop: 48960, Start Num: 27
Candidate Starts for BellaJr_85:
(7, 48616), (8, 48652), (11, 48673), (14, 48697), (Start: 27 @48775 has 1 MA's), (34, 48787), (39, 48829),

Gene: BigSherm_57 Start: 37321, Stop: 37506, Start Num: 30
Candidate Starts for BigSherm_57:
(Start: 30 @37321 has 6 MA's), (39, 37372), (46, 37441), (49, 37465),

Gene: Bowden_80 Start: 50655, Stop: 50479, Start Num: 28
Candidate Starts for Bowden_80:
(10, 50775), (13, 50760), (18, 50715), (19, 50703), (Start: 28 @50655 has 12 MA's), (33, 50646), (47, 50526), (48, 50520),

Gene: Brynnie_26 Start: 19958, Stop: 19785, Start Num: 32
Candidate Starts for Brynnie_26:
(Start: 32 @19958 has 6 MA's), (39, 19916), (45, 19865), (50, 19817), (54, 19790),

Gene: CardboardBox_60 Start: 35534, Stop: 35358, Start Num: 32
Candidate Starts for CardboardBox_60:
(18, 35585), (Start: 32 @35534 has 6 MA's), (39, 35492), (42, 35474),

Gene: Celia_76 Start: 48716, Stop: 48549, Start Num: 28
Candidate Starts for Celia_76:
(20, 48761), (Start: 28 @48716 has 12 MA's), (36, 48695), (47, 48596), (51, 48563), (52, 48557),

Gene: ChamoyPickle_61 Start: 36074, Stop: 35898, Start Num: 32
Candidate Starts for ChamoyPickle_61:
(18, 36125), (Start: 32 @36074 has 6 MA's), (39, 36032), (42, 36014),

Gene: Chickaboom_26 Start: 19048, Stop: 18875, Start Num: 32
Candidate Starts for Chickaboom_26:
(Start: 32 @19048 has 6 MA's), (39, 19006), (45, 18955), (50, 18907), (54, 18880),

Gene: ChipsNGuac_60 Start: 35534, Stop: 35358, Start Num: 32
Candidate Starts for ChipsNGuac_60:
(18, 35585), (Start: 32 @35534 has 6 MA's), (39, 35492), (42, 35474),

Gene: Cole_56 Start: 37374, Stop: 37559, Start Num: 30
Candidate Starts for Cole_56:
(Start: 30 @37374 has 6 MA's), (39, 37425), (46, 37494), (49, 37518),

Gene: Daudau_80 Start: 48697, Stop: 48527, Start Num: 31
Candidate Starts for Daudau_80:
(16, 48769), (24, 48721), (Start: 31 @48697 has 10 MA's), (47, 48574), (48, 48568),

Gene: Dirdigger_57 Start: 38079, Stop: 38264, Start Num: 31
Candidate Starts for Dirdigger_57:
(Start: 31 @38079 has 10 MA's), (39, 38130), (49, 38223),

Gene: Donatella_60 Start: 38288, Stop: 38473, Start Num: 30
Candidate Starts for Donatella_60:
(Start: 30 @38288 has 6 MA's), (39, 38339), (46, 38408), (49, 38432),

Gene: Doucette_54 Start: 34767, Stop: 34997, Start Num: 21

Candidate Starts for Doucette_54:

(Start: 21 @34767 has 7 MA's), (35, 34833), (38, 34839), (39, 34866), (41, 34881), (43, 34893), (44, 34905),

Gene: E1_48 Start: 31658, Stop: 31888, Start Num: 21

Candidate Starts for E1_48:

(Start: 21 @31658 has 7 MA's), (35, 31724), (38, 31730), (39, 31757), (41, 31772), (43, 31784), (44, 31796),

Gene: E6_54 Start: 34589, Stop: 34819, Start Num: 21

Candidate Starts for E6_54:

(3, 34364), (6, 34466), (9, 34511), (Start: 21 @34589 has 7 MA's), (35, 34655), (38, 34661), (39, 34688), (41, 34703), (43, 34715), (44, 34727), (48, 34769), (50, 34787),

Gene: Elesar_53 Start: 38195, Stop: 38380, Start Num: 30

Candidate Starts for Elesar_53:

(Start: 30 @38195 has 6 MA's), (39, 38246),

Gene: Ezurina_59 Start: 36392, Stop: 36258, Start Num: 39

Candidate Starts for Ezurina_59:

(23, 36470), (25, 36458), (Start: 32 @36434 has 6 MA's), (39, 36392), (42, 36374),

Gene: G4_65 Start: 36425, Stop: 36655, Start Num: 21

Candidate Starts for G4_65:

(6, 36302), (Start: 21 @36425 has 7 MA's), (35, 36491), (38, 36497), (39, 36524), (41, 36539), (44, 36563),

Gene: Gerri43_60 Start: 35534, Stop: 35358, Start Num: 32

Candidate Starts for Gerri43_60:

(18, 35585), (Start: 32 @35534 has 6 MA's), (39, 35492), (42, 35474),

Gene: GoodLuckBabe_61 Start: 37968, Stop: 38153, Start Num: 31

Candidate Starts for GoodLuckBabe_61:

(1, 37374), (2, 37470), (4, 37743), (12, 37854), (Start: 31 @37968 has 10 MA's), (39, 38019),

Gene: Guinevere_63 Start: 37945, Stop: 38130, Start Num: 31

Candidate Starts for Guinevere_63:

(1, 37351), (2, 37447), (4, 37720), (12, 37831), (Start: 31 @37945 has 10 MA's), (39, 37996),

Gene: Gusanita_60 Start: 38331, Stop: 38516, Start Num: 30

Candidate Starts for Gusanita_60:

(Start: 30 @38331 has 6 MA's), (39, 38382), (46, 38451), (49, 38475),

Gene: Haizum_78 Start: 48876, Stop: 48697, Start Num: 28

Candidate Starts for Haizum_78:

(26, 48882), (Start: 28 @48876 has 12 MA's), (33, 48867), (47, 48744), (48, 48738),

Gene: Halloweekend_55 Start: 37457, Stop: 37642, Start Num: 30

Candidate Starts for Halloweekend_55:

(Start: 30 @37457 has 6 MA's), (39, 37508), (46, 37577), (49, 37601),

Gene: Ichiang_57 Start: 37630, Stop: 37815, Start Num: 31

Candidate Starts for Ichiang_57:

(Start: 31 @37630 has 10 MA's), (39, 37681), (49, 37774),

Gene: IsHungry_56 Start: 36395, Stop: 36580, Start Num: 29

Candidate Starts for IsHungry_56:

(Start: 29 @36395 has 2 MA's), (37, 36416), (39, 36446), (49, 36539),

Gene: Itza_79 Start: 48649, Stop: 48482, Start Num: 28

Candidate Starts for Itza_79:

(20, 48694), (Start: 28 @48649 has 12 MA's), (36, 48628), (47, 48529), (51, 48496), (52, 48490),

Gene: Jamun_26 Start: 19555, Stop: 19382, Start Num: 32

Candidate Starts for Jamun_26:

(Start: 32 @19555 has 6 MA's), (39, 19513), (43, 19486), (45, 19462), (50, 19414),

Gene: Julie_59 Start: 38051, Stop: 38236, Start Num: 31

Candidate Starts for Julie_59:

(5, 37841), (15, 37961), (17, 37982), (Start: 31 @38051 has 10 MA's), (39, 38102), (49, 38195),

Gene: Kihatsu_61 Start: 39178, Stop: 39363, Start Num: 31

Candidate Starts for Kihatsu_61:

(Start: 31 @39178 has 10 MA's), (39, 39229), (49, 39322),

Gene: Lenoxika_57 Start: 37505, Stop: 37690, Start Num: 31

Candidate Starts for Lenoxika_57:

(Start: 31 @37505 has 10 MA's), (39, 37556), (49, 37649),

Gene: MillySue_60 Start: 37665, Stop: 37850, Start Num: 31

Candidate Starts for MillySue_60:

(Start: 31 @37665 has 10 MA's), (39, 37716), (41, 37731), (47, 37791), (49, 37809),

Gene: Nandita_60 Start: 38192, Stop: 38377, Start Num: 31

Candidate Starts for Nandita_60:

(Start: 31 @38192 has 10 MA's), (39, 38243), (49, 38336),

Gene: Neuville_59 Start: 35534, Stop: 35358, Start Num: 32

Candidate Starts for Neuville_59:

(18, 35585), (Start: 32 @35534 has 6 MA's), (39, 35492), (42, 35474),

Gene: Nishikigoi_79 Start: 48876, Stop: 48697, Start Num: 28

Candidate Starts for Nishikigoi_79:

(26, 48882), (Start: 28 @48876 has 12 MA's), (33, 48867), (41, 48807), (47, 48744), (48, 48738),

Gene: PFR1_52 Start: 35760, Stop: 35990, Start Num: 21

Candidate Starts for PFR1_52:

(Start: 21 @35760 has 7 MA's), (35, 35826), (39, 35859), (41, 35874), (43, 35886), (44, 35898), (48, 35940),

Gene: PFR2_54 Start: 37329, Stop: 37559, Start Num: 21

Candidate Starts for PFR2_54:

(Start: 21 @37329 has 7 MA's), (35, 37395), (39, 37428), (41, 37443), (43, 37455), (44, 37467), (48, 37509),

Gene: Popper_61 Start: 37590, Stop: 37775, Start Num: 29

Candidate Starts for Popper_61:

(Start: 29 @37590 has 2 MA's), (37, 37611), (39, 37641),

Gene: QuinnAvery_62 Start: 38995, Stop: 39180, Start Num: 31

Candidate Starts for QuinnAvery_62:

(Start: 31 @38995 has 10 MA's), (39, 39046), (46, 39115), (49, 39139),

Gene: Raqqa_89 Start: 49482, Stop: 49664, Start Num: 30

Candidate Starts for Raqqa_89:

(Start: 30 @49482 has 6 MA's), (34, 49491), (39, 49533),

Gene: Roberts_59 Start: 35534, Stop: 35358, Start Num: 32

Candidate Starts for Roberts_59:

(18, 35585), (Start: 32 @35534 has 6 MA's), (39, 35492), (42, 35474),

Gene: Ryan_61 Start: 38763, Stop: 38948, Start Num: 31

Candidate Starts for Ryan_61:

(Start: 31 @38763 has 10 MA's), (39, 38814), (46, 38883), (49, 38907),

Gene: Saintcarr_59 Start: 38472, Stop: 38657, Start Num: 30

Candidate Starts for Saintcarr_59:

(Start: 30 @38472 has 6 MA's), (39, 38523), (46, 38592), (49, 38616),

Gene: Schism_62 Start: 38785, Stop: 38970, Start Num: 31

Candidate Starts for Schism_62:

(Start: 31 @38785 has 10 MA's), (39, 38836), (46, 38905), (49, 38929),

Gene: Studio_61 Start: 36724, Stop: 36548, Start Num: 32

Candidate Starts for Studio_61:

(Start: 32 @36724 has 6 MA's), (39, 36682), (42, 36664),

Gene: Tefunt_78 Start: 48790, Stop: 48611, Start Num: 28

Candidate Starts for Tefunt_78:

(26, 48796), (Start: 28 @48790 has 12 MA's), (33, 48781), (47, 48658), (48, 48652),

Gene: Thestral_81 Start: 50682, Stop: 50506, Start Num: 28

Candidate Starts for Thestral_81:

(10, 50802), (13, 50787), (18, 50742), (19, 50730), (Start: 28 @50682 has 12 MA's), (33, 50673), (47, 50553), (48, 50547),

Gene: TinaBelcher_79 Start: 50544, Stop: 50368, Start Num: 28

Candidate Starts for TinaBelcher_79:

(10, 50664), (13, 50649), (18, 50604), (19, 50592), (Start: 28 @50544 has 12 MA's), (33, 50535), (47, 50415), (48, 50409),

Gene: ToastyOats_60 Start: 37925, Stop: 38110, Start Num: 31

Candidate Starts for ToastyOats_60:

(Start: 31 @37925 has 10 MA's), (39, 37976), (49, 38069),

Gene: Toodles_59 Start: 38784, Stop: 38969, Start Num: 31

Candidate Starts for Toodles_59:

(Start: 31 @38784 has 10 MA's), (39, 38835), (49, 38928),

Gene: TrvxScott_79 Start: 50651, Stop: 50475, Start Num: 28

Candidate Starts for TrvxScott_79:

(10, 50771), (13, 50756), (18, 50711), (19, 50699), (22, 50687), (Start: 28 @50651 has 12 MA's), (33, 50642), (47, 50522), (48, 50516),

Gene: Urza_78 Start: 48671, Stop: 48504, Start Num: 28

Candidate Starts for Urza_78:

(20, 48716), (Start: 28 @48671 has 12 MA's), (36, 48650), (47, 48551), (51, 48518), (52, 48512),

Gene: VieEnRose_77 Start: 48408, Stop: 48241, Start Num: 28

Candidate Starts for VieEnRose_77:

(20, 48453), (Start: 28 @48408 has 12 MA's), (36, 48387), (47, 48288), (51, 48255), (52, 48249),

Gene: Vulpecula_26 Start: 19553, Stop: 19380, Start Num: 32

Candidate Starts for Vulpecula_26:

(Start: 32 @19553 has 6 MA's), (39, 19511), (45, 19460), (50, 19412),

Gene: WileyE_26 Start: 19048, Stop: 18875, Start Num: 32

Candidate Starts for WileyE_26:

(Start: 32 @19048 has 6 MA's), (39, 19006), (45, 18955), (50, 18907), (54, 18880),

Gene: Yonex_61 Start: 38763, Stop: 38948, Start Num: 31

Candidate Starts for Yonex_61:

(Start: 31 @38763 has 10 MA's), (39, 38814), (46, 38883), (49, 38907),

Gene: Zaheer_62 Start: 38885, Stop: 39070, Start Num: 31

Candidate Starts for Zaheer_62:

(Start: 31 @38885 has 10 MA's), (39, 38936), (46, 39005), (49, 39029),

Gene: Zucker_87 Start: 50229, Stop: 50414, Start Num: 27

Candidate Starts for Zucker_87:

(Start: 27 @50229 has 1 MA's), (39, 50283),