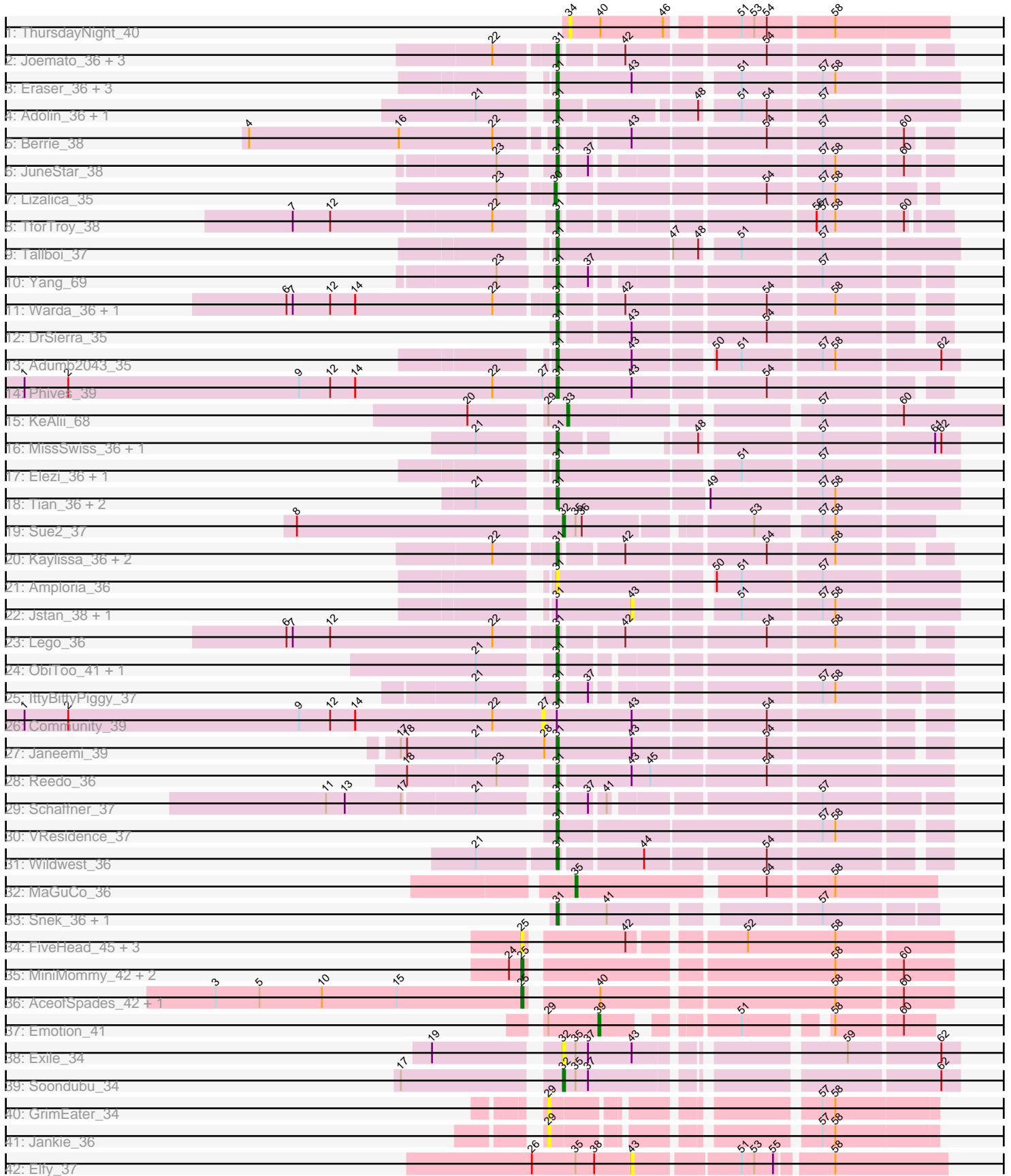


Pham 294724



Note: Tracks are now grouped by subcluster and scaled. Switching in subcluster is indicated by changes in track color. Track scale is now set by default to display the region 30 bp upstream of start 1 to 30 bp downstream of the last possible start. If this default region is judged to be packed too tightly with annotated starts, the track will be further scaled to only show that region of the ORF with annotated starts. This action will be indicated by adding "Zoomed" to the title. For starts, yellow indicates the location of called starts comprised solely of Glimmer/GeneMark auto-annotations, green indicates the location of called starts with at least 1 manual gene annotation.

Pham 294724 Report

This analysis was run 04/18/26 on database version 643.

Pham number 294724 has 65 members, 18 are drafts.

Phages represented in each track:

- Track 1 : ThursdayNight_40
- Track 2 : Joemato_36, JohnDoe_36, Simpson_38, Cyan_36
- Track 3 : Eraser_36, Niobe_36, Asa16_36, London_36
- Track 4 : Adolin_36, DrManhattan_36
- Track 5 : Berrie_38
- Track 6 : JuneStar_38
- Track 7 : Lizalica_35
- Track 8 : TforTroy_38
- Track 9 : Tallboi_37
- Track 10 : Yang_69
- Track 11 : Warda_36, Tbone_35
- Track 12 : DrSierra_35
- Track 13 : Adumb2043_35
- Track 14 : Phives_39
- Track 15 : KeAlii_68
- Track 16 : MissSwiss_36, PandaPo_36
- Track 17 : Elezi_36, Subaru_37
- Track 18 : Tian_36, Amyev_36, Pixelle_36
- Track 19 : Sue2_37
- Track 20 : Kaylissa_36, Tutumahutu_36, YesChef_36
- Track 21 : Amploria_36
- Track 22 : Jstan_38, Skelbel_37
- Track 23 : Lego_36
- Track 24 : ObiToo_41, Crewmate_42
- Track 25 : IttyBittyPiggy_37
- Track 26 : Community_39
- Track 27 : Janeemi_39
- Track 28 : Reedo_36
- Track 29 : Schaffner_37
- Track 30 : VResidence_37
- Track 31 : Wildwest_36
- Track 32 : MaGuCo_36
- Track 33 : Snek_36, Tweety19_36
- Track 34 : FiveHead_45, JohnThicc_44, LadyAstra_44, Origami_43
- Track 35 : MiniMommy_42, JasmineDragon_41, ShakeltOph_41
- Track 36 : AceofSpades_42, VroomVroom_41
- Track 37 : Emotion_41

- Track 38 : Exile_34
- Track 39 : Soondubu_34
- Track 40 : GrimEater_34
- Track 41 : Jankie_36
- Track 42 : Elfy_37

Summary of Final Annotations (See graph section above for start numbers):

The start number called the most often in the published annotations is 31, it was called in 37 of the 47 non-draft genes in the pham.

Genes that call this "Most Annotated" start:

- Adolin_36, Adumb2043_35, Amploria_36, Amyev_36, Asa16_36, Berrie_38, Crewmate_42, Cyan_36, DrManhattan_36, DrSierra_35, Elezi_36, Eraser_36, IttyBittyPiggy_37, Janeemi_39, Joemato_36, JohnDoe_36, JuneStar_38, Kaylissa_36, Lego_36, London_36, MissSwiss_36, Niobe_36, ObiToo_41, PandaPo_36, Phives_39, Pixelle_36, Reedo_36, Schaffner_37, Simpson_38, Snek_36, Subaru_37, Tallboi_37, Tbone_35, TforTroy_38, Tian_36, Tutumahutu_36, Tweety19_36, VResidence_37, Warda_36, Wildwest_36, Yang_69, YesChef_36,

Genes that have the "Most Annotated" start but do not call it:

- Community_39, Jstan_38, Skelbel_37,

Genes that do not have the "Most Annotated" start:

- AceofSpades_42, Elfy_37, Emotion_41, Exile_34, FiveHead_45, GrimEater_34, Jankie_36, JasmineDragon_41, JohnThicc_44, KeAlii_68, LadyAstra_44, Lizalica_35, MaGuCo_36, MiniMommy_42, Origami_43, ShakeltOph_41, Soondubu_34, Sue2_37, ThursdayNight_40, VroomVroom_41,

Summary by start number:

Start 25:

- Found in 9 of 65 (13.8%) of genes in pham
- Manual Annotations of this start: 4 of 47
- Called 100.0% of time when present
- Phage (with cluster) where this start called: AceofSpades_42 (AZ4), FiveHead_45 (AZ4), JasmineDragon_41 (AZ4), JohnThicc_44 (AZ4), LadyAstra_44 (AZ4), MiniMommy_42 (AZ4), Origami_43 (AZ4), ShakeltOph_41 (AZ4), VroomVroom_41 (AZ4),

Start 27:

- Found in 2 of 65 (3.1%) of genes in pham
- No Manual Annotations of this start.
- Called 50.0% of time when present
- Phage (with cluster) where this start called: Community_39 (AZ1),

Start 29:

- Found in 4 of 65 (6.2%) of genes in pham
- No Manual Annotations of this start.
- Called 50.0% of time when present

- Phage (with cluster) where this start called: GrimEater_34 (FP), Jankie_36 (FP),

Start 30:

- Found in 1 of 65 (1.5%) of genes in pham
- Manual Annotations of this start: 1 of 47
- Called 100.0% of time when present
- Phage (with cluster) where this start called: Lizalica_35 (AZ1),

Start 31:

- Found in 45 of 65 (69.2%) of genes in pham
- Manual Annotations of this start: 37 of 47
- Called 93.3% of time when present
- Phage (with cluster) where this start called: Adolin_36 (AZ1), Adumb2043_35 (AZ1), Amploria_36 (AZ1), Amyev_36 (AZ1), Asa16_36 (AZ1), Berrie_38 (AZ1), Crewmate_42 (AZ1), Cyan_36 (AZ1), DrManhattan_36 (AZ1), DrSierra_35 (AZ1), Elezi_36 (AZ1), Eraser_36 (AZ1), IttyBittyPiggy_37 (AZ1), Janeemi_39 (AZ1), Joemato_36 (AZ1), JohnDoe_36 (AZ1), JuneStar_38 (AZ1), Kaylissa_36 (AZ1), Lego_36 (AZ1), London_36 (AZ1), MissSwiss_36 (AZ1), Niobe_36 (AZ1), ObiToo_41 (AZ1), PandaPo_36 (AZ1), Phives_39 (AZ1), Pixelle_36 (AZ1), Reedo_36 (AZ1), Schaffner_37 (AZ1), Simpson_38 (AZ1), Snek_36 (AZ3), Subaru_37 (AZ1), Tallboi_37 (AZ1), Tbone_35 (AZ1), TforTroy_38 (AZ1), Tian_36 (AZ1), Tutumahutu_36 (AZ1), Tweety19_36 (AZ3), VResidence_37 (AZ1), Warda_36 (AZ1), Wildwest_36 (AZ1), Yang_69 (AZ1), YesChef_36 (AZ1),

Start 32:

- Found in 3 of 65 (4.6%) of genes in pham
- Manual Annotations of this start: 2 of 47
- Called 100.0% of time when present
- Phage (with cluster) where this start called: Exile_34 (AZ6), Soondubu_34 (AZ6), Sue2_37 (AZ1),

Start 33:

- Found in 1 of 65 (1.5%) of genes in pham
- Manual Annotations of this start: 1 of 47
- Called 100.0% of time when present
- Phage (with cluster) where this start called: KeAlii_68 (AZ1),

Start 34:

- Found in 1 of 65 (1.5%) of genes in pham
- No Manual Annotations of this start.
- Called 100.0% of time when present
- Phage (with cluster) where this start called: ThursdayNight_40 (AZ),

Start 35:

- Found in 5 of 65 (7.7%) of genes in pham
- Manual Annotations of this start: 1 of 47
- Called 20.0% of time when present
- Phage (with cluster) where this start called: MaGuCo_36 (AZ2),

Start 39:

- Found in 1 of 65 (1.5%) of genes in pham
- Manual Annotations of this start: 1 of 47
- Called 100.0% of time when present

- Phage (with cluster) where this start called: Emotion_41 (AZ4),

Start 43:

- Found in 15 of 65 (23.1%) of genes in pham
- No Manual Annotations of this start.
- Called 20.0% of time when present
- Phage (with cluster) where this start called: Elfy_37 (FP), Jstan_38 (AZ1), Skelbel_37 (AZ1),

Summary by clusters:

There are 7 clusters represented in this pham: FP, AZ, AZ1, AZ2, AZ3, AZ4, AZ6,

Info for manual annotations of cluster AZ1:

- Start number 30 was manually annotated 1 time for cluster AZ1.
- Start number 31 was manually annotated 35 times for cluster AZ1.
- Start number 32 was manually annotated 1 time for cluster AZ1.
- Start number 33 was manually annotated 1 time for cluster AZ1.

Info for manual annotations of cluster AZ2:

- Start number 35 was manually annotated 1 time for cluster AZ2.

Info for manual annotations of cluster AZ3:

- Start number 31 was manually annotated 2 times for cluster AZ3.

Info for manual annotations of cluster AZ4:

- Start number 25 was manually annotated 4 times for cluster AZ4.
- Start number 39 was manually annotated 1 time for cluster AZ4.

Info for manual annotations of cluster AZ6:

- Start number 32 was manually annotated 1 time for cluster AZ6.

Gene Information:

Gene: AceofSpades_42 Start: 27647, Stop: 27459, Start Num: 25

Candidate Starts for AceofSpades_42:

(3, 27794), (5, 27773), (10, 27743), (15, 27707), (Start: 25 @27647 has 4 MA's), (40, 27617), (58, 27512), (60, 27482),

Gene: Adolin_36 Start: 24646, Stop: 24473, Start Num: 31

Candidate Starts for Adolin_36:

(21, 24676), (Start: 31 @24646 has 37 MA's), (48, 24586), (51, 24571), (54, 24559), (57, 24535),

Gene: Adumb2043_35 Start: 25817, Stop: 25638, Start Num: 31

Candidate Starts for Adumb2043_35:

(Start: 31 @25817 has 37 MA's), (43, 25781), (50, 25748), (51, 25736), (57, 25700), (58, 25694), (62, 25646),

Gene: Amploria_36 Start: 26000, Stop: 25821, Start Num: 31

Candidate Starts for Amploria_36:

(Start: 31 @26000 has 37 MA's), (50, 25931), (51, 25919), (57, 25883),

Gene: Amyev_36 Start: 27343, Stop: 27161, Start Num: 31

Candidate Starts for Amyev_36:

(21, 27373), (Start: 31 @27343 has 37 MA's), (49, 27274), (57, 27223), (58, 27217),

Gene: Asa16_36 Start: 27387, Stop: 27208, Start Num: 31

Candidate Starts for Asa16_36:

(Start: 31 @27387 has 37 MA's), (43, 27351), (51, 27306), (57, 27270), (58, 27264),

Gene: Berrie_38 Start: 27347, Stop: 27180, Start Num: 31

Candidate Starts for Berrie_38:

(4, 27488), (16, 27416), (22, 27371), (Start: 31 @27347 has 37 MA's), (43, 27317), (54, 27257), (57, 27233), (60, 27197),

Gene: Community_39 Start: 28086, Stop: 27907, Start Num: 27

Candidate Starts for Community_39:

(1, 28335), (2, 28314), (9, 28203), (12, 28188), (14, 28176), (22, 28110), (27, 28086), (Start: 31 @28080 has 37 MA's), (43, 28044), (54, 27984),

Gene: Crewmate_42 Start: 26882, Stop: 26715, Start Num: 31

Candidate Starts for Crewmate_42:

(21, 26912), (Start: 31 @26882 has 37 MA's),

Gene: Cyan_36 Start: 25787, Stop: 25620, Start Num: 31

Candidate Starts for Cyan_36:

(22, 25814), (Start: 31 @25787 has 37 MA's), (42, 25760), (54, 25697),

Gene: DrManhattan_36 Start: 24637, Stop: 24464, Start Num: 31

Candidate Starts for DrManhattan_36:

(21, 24667), (Start: 31 @24637 has 37 MA's), (48, 24577), (51, 24562), (54, 24550), (57, 24526),

Gene: DrSierra_35 Start: 24646, Stop: 24479, Start Num: 31

Candidate Starts for DrSierra_35:

(Start: 31 @24646 has 37 MA's), (43, 24616), (54, 24556),

Gene: Elezi_36 Start: 27403, Stop: 27224, Start Num: 31

Candidate Starts for Elezi_36:

(Start: 31 @27403 has 37 MA's), (51, 27322), (57, 27286),

Gene: Elfy_37 Start: 25651, Stop: 25511, Start Num: 43

Candidate Starts for Elfy_37:

(26, 25699), (Start: 35 @25678 has 1 MA's), (38, 25669), (43, 25651), (51, 25603), (53, 25597), (55, 25588), (58, 25564),

Gene: Emotion_41 Start: 27364, Stop: 27236, Start Num: 39

Candidate Starts for Emotion_41:

(29, 27388), (Start: 39 @27364 has 1 MA's), (51, 27313), (58, 27280), (60, 27250),

Gene: Eraser_36 Start: 27394, Stop: 27215, Start Num: 31

Candidate Starts for Eraser_36:

(Start: 31 @27394 has 37 MA's), (43, 27358), (51, 27313), (57, 27277), (58, 27271),

Gene: Exile_34 Start: 27957, Stop: 27790, Start Num: 32

Candidate Starts for Exile_34:

(19, 28011), (Start: 32 @27957 has 2 MA's), (Start: 35 @27951 has 1 MA's), (37, 27945), (43, 27924), (59, 27840), (62, 27798),

Gene: FiveHead_45 Start: 27507, Stop: 27322, Start Num: 25

Candidate Starts for FiveHead_45:

(Start: 25 @27507 has 4 MA's), (42, 27465), (52, 27417), (58, 27375),

Gene: GrimEater_34 Start: 24905, Stop: 24747, Start Num: 29

Candidate Starts for GrimEater_34:

(29, 24905), (57, 24800), (58, 24794),

Gene: IttyBittyPiggy_37 Start: 25993, Stop: 25829, Start Num: 31

Candidate Starts for IttyBittyPiggy_37:

(21, 26023), (Start: 31 @25993 has 37 MA's), (37, 25981), (57, 25885), (58, 25879),

Gene: Janeemi_39 Start: 28091, Stop: 27918, Start Num: 31

Candidate Starts for Janeemi_39:

(17, 28166), (18, 28163), (21, 28130), (28, 28097), (Start: 31 @28091 has 37 MA's), (43, 28055), (54, 27995),

Gene: Jankie_36 Start: 25085, Stop: 24927, Start Num: 29

Candidate Starts for Jankie_36:

(29, 25085), (57, 24980), (58, 24974),

Gene: JasmineDragon_41 Start: 27365, Stop: 27177, Start Num: 25

Candidate Starts for JasmineDragon_41:

(24, 27371), (Start: 25 @27365 has 4 MA's), (58, 27230), (60, 27200),

Gene: Joemato_36 Start: 25818, Stop: 25651, Start Num: 31

Candidate Starts for Joemato_36:

(22, 25845), (Start: 31 @25818 has 37 MA's), (42, 25791), (54, 25728),

Gene: JohnDoe_36 Start: 25809, Stop: 25642, Start Num: 31

Candidate Starts for JohnDoe_36:

(22, 25836), (Start: 31 @25809 has 37 MA's), (42, 25782), (54, 25719),

Gene: JohnThicc_44 Start: 27507, Stop: 27322, Start Num: 25

Candidate Starts for JohnThicc_44:

(Start: 25 @27507 has 4 MA's), (42, 27465), (52, 27417), (58, 27375),

Gene: Jstan_38 Start: 27352, Stop: 27209, Start Num: 43

Candidate Starts for Jstan_38:

(Start: 31 @27388 has 37 MA's), (43, 27352), (51, 27307), (57, 27271), (58, 27265),

Gene: JuneStar_38 Start: 28123, Stop: 27959, Start Num: 31

Candidate Starts for JuneStar_38:

(23, 28144), (Start: 31 @28123 has 37 MA's), (37, 28111), (57, 28015), (58, 28009), (60, 27979),

Gene: Kaylissa_36 Start: 25754, Stop: 25587, Start Num: 31

Candidate Starts for Kaylissa_36:

(22, 25781), (Start: 31 @25754 has 37 MA's), (42, 25727), (54, 25664), (58, 25634),

Gene: KeAlii_68 Start: 26504, Stop: 26304, Start Num: 33

Candidate Starts for KeAlii_68:

(20, 26543), (29, 26513), (Start: 33 @26504 has 1 MA's), (57, 26399), (60, 26363),

Gene: LadyAstra_44 Start: 27607, Stop: 27422, Start Num: 25

Candidate Starts for LadyAstra_44:

(Start: 25 @27607 has 4 MA's), (42, 27565), (52, 27517), (58, 27475),

Gene: Lego_36 Start: 25700, Stop: 25533, Start Num: 31

Candidate Starts for Lego_36:

(6, 25826), (7, 25823), (12, 25805), (22, 25727), (Start: 31 @25700 has 37 MA's), (42, 25673), (54, 25610), (58, 25580),

Gene: Lizalica_35 Start: 25602, Stop: 25441, Start Num: 30

Candidate Starts for Lizalica_35:

(23, 25626), (Start: 30 @25602 has 1 MA's), (54, 25512), (57, 25488), (58, 25482),

Gene: London_36 Start: 27403, Stop: 27224, Start Num: 31

Candidate Starts for London_36:

(Start: 31 @27403 has 37 MA's), (43, 27367), (51, 27322), (57, 27286), (58, 27280),

Gene: MaGuCo_36 Start: 26435, Stop: 26274, Start Num: 35

Candidate Starts for MaGuCo_36:

(Start: 35 @26435 has 1 MA's), (54, 26351), (58, 26321),

Gene: MiniMommy_42 Start: 27366, Stop: 27178, Start Num: 25

Candidate Starts for MiniMommy_42:

(24, 27372), (Start: 25 @27366 has 4 MA's), (58, 27231), (60, 27201),

Gene: MissSwiss_36 Start: 24686, Stop: 24537, Start Num: 31

Candidate Starts for MissSwiss_36:

(21, 24716), (Start: 31 @24686 has 37 MA's), (48, 24650), (57, 24599), (61, 24548), (62, 24545),

Gene: Niobe_36 Start: 27388, Stop: 27209, Start Num: 31

Candidate Starts for Niobe_36:

(Start: 31 @27388 has 37 MA's), (43, 27352), (51, 27307), (57, 27271), (58, 27265),

Gene: ObiToo_41 Start: 26622, Stop: 26455, Start Num: 31

Candidate Starts for ObiToo_41:

(21, 26652), (Start: 31 @26622 has 37 MA's),

Gene: Origami_43 Start: 27399, Stop: 27214, Start Num: 25

Candidate Starts for Origami_43:

(Start: 25 @27399 has 4 MA's), (42, 27357), (52, 27309), (58, 27267),

Gene: PandaPo_36 Start: 24689, Stop: 24540, Start Num: 31

Candidate Starts for PandaPo_36:

(21, 24719), (Start: 31 @24689 has 37 MA's), (48, 24653), (57, 24602), (61, 24551), (62, 24548),

Gene: Phives_39 Start: 27908, Stop: 27735, Start Num: 31

Candidate Starts for Phives_39:

(1, 28163), (2, 28142), (9, 28031), (12, 28016), (14, 28004), (22, 27938), (27, 27914), (Start: 31 @27908 has 37 MA's), (43, 27872), (54, 27812),

Gene: Pixelle_36 Start: 27363, Stop: 27181, Start Num: 31

Candidate Starts for Pixelle_36:

(21, 27393), (Start: 31 @27363 has 37 MA's), (49, 27294), (57, 27243), (58, 27237),

Gene: Reedo_36 Start: 24760, Stop: 24581, Start Num: 31

Candidate Starts for Reedo_36:

(18, 24823), (23, 24781), (Start: 31 @24760 has 37 MA's), (43, 24727), (45, 24718), (54, 24664),

Gene: Schaffner_37 Start: 26900, Stop: 26736, Start Num: 31

Candidate Starts for Schaffner_37:

(11, 26999), (13, 26990), (17, 26963), (21, 26930), (Start: 31 @26900 has 37 MA's), (37, 26888), (41, 26882), (57, 26792),

Gene: ShakeltOph_41 Start: 27365, Stop: 27177, Start Num: 25

Candidate Starts for ShakeltOph_41:

(24, 27371), (Start: 25 @27365 has 4 MA's), (58, 27230), (60, 27200),

Gene: Simpson_38 Start: 25818, Stop: 25651, Start Num: 31

Candidate Starts for Simpson_38:

(22, 25845), (Start: 31 @25818 has 37 MA's), (42, 25791), (54, 25728),

Gene: Skelbel_37 Start: 27352, Stop: 27209, Start Num: 43

Candidate Starts for Skelbel_37:

(Start: 31 @27388 has 37 MA's), (43, 27352), (51, 27307), (57, 27271), (58, 27265),

Gene: Snek_36 Start: 25070, Stop: 24912, Start Num: 31

Candidate Starts for Snek_36:

(Start: 31 @25070 has 37 MA's), (41, 25049), (57, 24962),

Gene: Soondubu_34 Start: 27961, Stop: 27794, Start Num: 32

Candidate Starts for Soondubu_34:

(17, 28030), (Start: 32 @27961 has 2 MA's), (Start: 35 @27955 has 1 MA's), (37, 27949), (62, 27802),

Gene: Subaru_37 Start: 27403, Stop: 27224, Start Num: 31

Candidate Starts for Subaru_37:

(Start: 31 @27403 has 37 MA's), (51, 27322), (57, 27286),

Gene: Sue2_37 Start: 26877, Stop: 26719, Start Num: 32

Candidate Starts for Sue2_37:

(8, 26997), (Start: 32 @26877 has 2 MA's), (Start: 35 @26871 has 1 MA's), (36, 26868), (53, 26796), (57, 26769), (58, 26763),

Gene: Tallboi_37 Start: 27555, Stop: 27376, Start Num: 31

Candidate Starts for Tallboi_37:

(Start: 31 @27555 has 37 MA's), (47, 27501), (48, 27489), (51, 27474), (57, 27438),

Gene: Tbone_35 Start: 25613, Stop: 25446, Start Num: 31

Candidate Starts for Tbone_35:

(6, 25739), (7, 25736), (12, 25718), (14, 25706), (22, 25640), (Start: 31 @25613 has 37 MA's), (42, 25586), (54, 25523), (58, 25493),

Gene: TforTroy_38 Start: 26539, Stop: 26378, Start Num: 31
Candidate Starts for TforTroy_38:
(7, 26653), (12, 26635), (22, 26560), (Start: 31 @26539 has 37 MA's), (56, 26434), (57, 26431), (58, 26425), (60, 26395),

Gene: ThursdayNight_40 Start: 27462, Stop: 27292, Start Num: 34
Candidate Starts for ThursdayNight_40:
(34, 27462), (40, 27447), (46, 27417), (51, 27387), (53, 27381), (54, 27375), (58, 27345),

Gene: Tian_36 Start: 27343, Stop: 27161, Start Num: 31
Candidate Starts for Tian_36:
(21, 27373), (Start: 31 @27343 has 37 MA's), (49, 27274), (57, 27223), (58, 27217),

Gene: Tutumahutu_36 Start: 25785, Stop: 25618, Start Num: 31
Candidate Starts for Tutumahutu_36:
(22, 25812), (Start: 31 @25785 has 37 MA's), (42, 25758), (54, 25695), (58, 25665),

Gene: Tweety19_36 Start: 25069, Stop: 24911, Start Num: 31
Candidate Starts for Tweety19_36:
(Start: 31 @25069 has 37 MA's), (41, 25048), (57, 24961),

Gene: VResidence_37 Start: 25954, Stop: 25781, Start Num: 31
Candidate Starts for VResidence_37:
(Start: 31 @25954 has 37 MA's), (57, 25834), (58, 25828),

Gene: VroomVroom_41 Start: 27510, Stop: 27322, Start Num: 25
Candidate Starts for VroomVroom_41:
(3, 27657), (5, 27636), (10, 27606), (15, 27570), (Start: 25 @27510 has 4 MA's), (40, 27480), (58, 27375), (60, 27345),

Gene: Warda_36 Start: 25789, Stop: 25622, Start Num: 31
Candidate Starts for Warda_36:
(6, 25915), (7, 25912), (12, 25894), (14, 25882), (22, 25816), (Start: 31 @25789 has 37 MA's), (42, 25762), (54, 25699), (58, 25669),

Gene: Wildwest_36 Start: 25977, Stop: 25810, Start Num: 31
Candidate Starts for Wildwest_36:
(21, 26013), (Start: 31 @25977 has 37 MA's), (44, 25941), (54, 25887),

Gene: Yang_69 Start: 26035, Stop: 25871, Start Num: 31
Candidate Starts for Yang_69:
(23, 26056), (Start: 31 @26035 has 37 MA's), (37, 26023), (57, 25927),

Gene: YesChef_36 Start: 25762, Stop: 25595, Start Num: 31
Candidate Starts for YesChef_36:
(22, 25789), (Start: 31 @25762 has 37 MA's), (42, 25735), (54, 25672), (58, 25642),