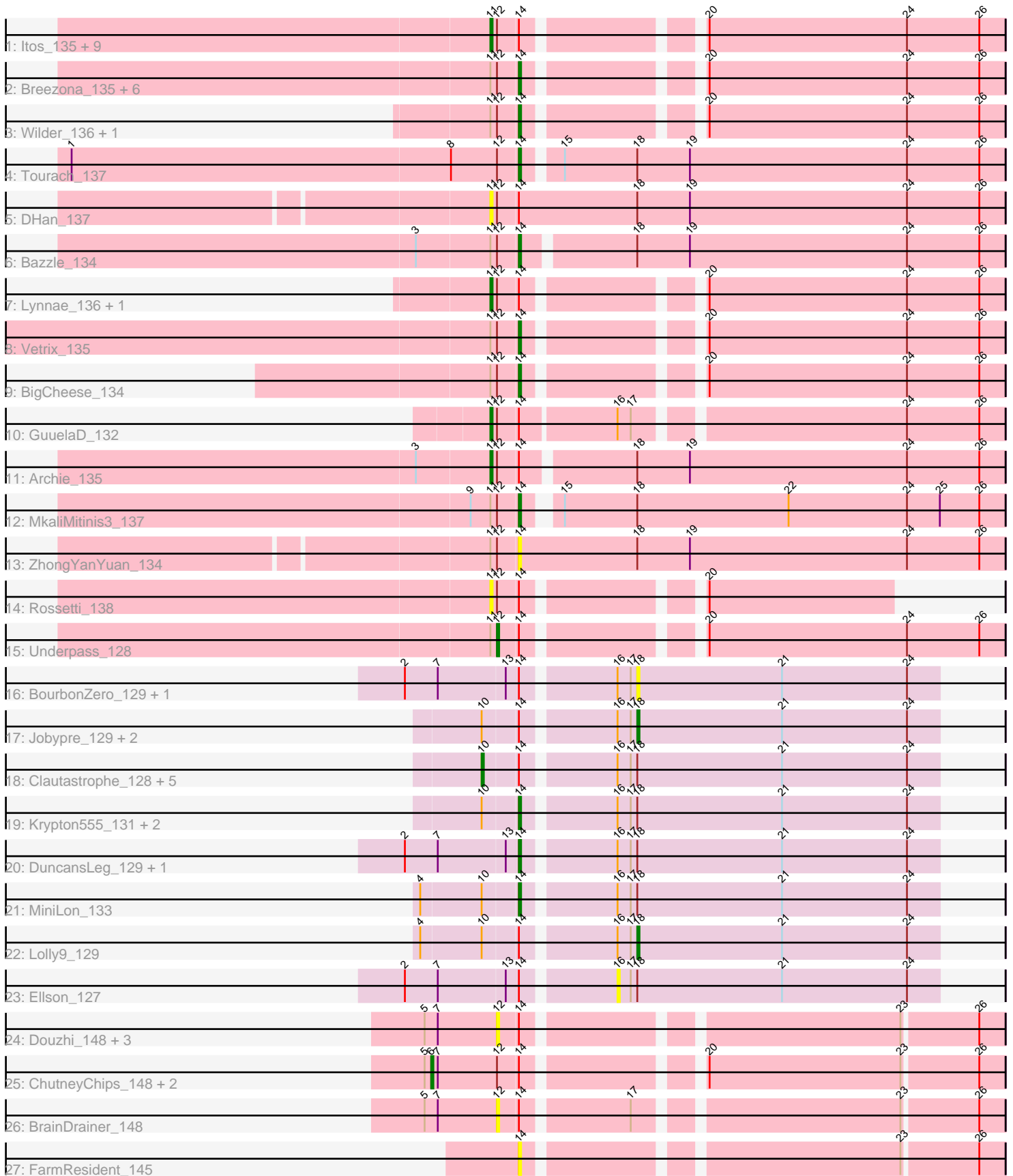


Pham 294751



Note: Tracks are now grouped by subcluster and scaled. Switching in subcluster is indicated by changes in track color. Track scale is now set by default to display the region 30 bp upstream of start 1 to 30 bp downstream of the last possible start. If this default region is judged to be packed too tightly with annotated starts, the track will be further scaled to only show that region of the ORF with annotated starts. This action will be indicated by adding "Zoomed" to the title. For starts, yellow indicates the location of called starts comprised solely of Glimmer/GeneMark auto-annotations, green indicates the location of called starts with at least 1 manual gene annotation.

Pham 294751 Report

This analysis was run 04/18/26 on database version 643.

Pham number 294751 has 60 members, 18 are drafts.

Phages represented in each track:

- Track 1 : Itos_135, Gabriela_135, Miley16_135, Crossroads_138, DrSeegs_133, SoJulia_139, Lewan_137, Wigglewiggles_136, Loadrie_136, Soap141_137
- Track 2 : Breezona_135, Nicholasp3_136, Netyap_133, Zakai_137, Gardann_135, Winky_135, Faith1_133
- Track 3 : Wilder_136, LilDestine_132
- Track 4 : Tourach_137
- Track 5 : DHan_137
- Track 6 : Bazzle_134
- Track 7 : Lynnae_136, Kahlid_135
- Track 8 : Vetrix_135
- Track 9 : BigCheese_134
- Track 10 : GuuelaD_132
- Track 11 : Archie_135
- Track 12 : MkaliMitinis3_137
- Track 13 : ZhongYanYuan_134
- Track 14 : Rossetti_138
- Track 15 : Underpass_128
- Track 16 : BourbonZero_129, KirDoubleO7_126
- Track 17 : Jobypre_129, MsGreen_130, Red305_130
- Track 18 : Clautastrophe_128, Finnry_127, Bellis_129, Samty_127, Snenia_128, Jubie_129
- Track 19 : Krypton555_131, Lumos_129, TriFive_130
- Track 20 : DuncansLeg_129, Whirlwind_130
- Track 21 : MiniLon_133
- Track 22 : Lolly9_129
- Track 23 : Ellson_127
- Track 24 : Douzhi_148, PYPDinur_147, Sheng711_148, Quby_148
- Track 25 : ChutneyChips_148, Kropertea_141, DyoEdafos_149
- Track 26 : BrainDrainer_148
- Track 27 : FarmResident_145

Summary of Final Annotations (See graph section above for start numbers):

The start number called the most often in the published annotations is 14, it was called in 20 of the 42 non-draft genes in the pham.

Genes that call this "Most Annotated" start:

- Bazzle_134, BigCheese_134, Breezona_135, DuncansLeg_129, Faith1_133, FarmResident_145, Gardann_135, Krypton555_131, LilDestine_132, Lumos_129, MiniLon_133, MkaliMitinis3_137, Netyap_133, Nicholasp3_136, Tourach_137, TriFive_130, Vetrix_135, Whirlwind_130, Wilder_136, Winky_135, Zakai_137, ZhongYanYuan_134,

Genes that have the "Most Annotated" start but do not call it:

- Archie_135, Bellis_129, BourbonZero_129, BrainDrainer_148, ChutneyChips_148, Clautastrophe_128, Crossroads_138, DHan_137, Douzhi_148, DrSeegs_133, DyoEdafos_149, Ellson_127, Finnry_127, Gabriela_135, GuuelaD_132, Itos_135, Jobypre_129, Jubie_129, Kahlid_135, KirDoubleO7_126, Kropertea_141, Lewan_137, Loadrie_136, Lolly9_129, Lynnae_136, Miley16_135, MsGreen_130, PYPDinur_147, Quby_148, Red305_130, Rossetti_138, Samty_127, Sheng711_148, Snenia_128, SoJulia_139, Soap141_137, Underpass_128, Wigglewiggie_136,

Genes that do not have the "Most Annotated" start:

-

Summary by start number:

Start 6:

- Found in 3 of 60 (5.0%) of genes in pham
- Manual Annotations of this start: 1 of 42
- Called 100.0% of time when present
- Phage (with cluster) where this start called: ChutneyChips_148 (L4), DyoEdafos_149 (L4), Kropertea_141 (L4),

Start 10:

- Found in 14 of 60 (23.3%) of genes in pham
- Manual Annotations of this start: 6 of 42
- Called 42.9% of time when present
- Phage (with cluster) where this start called: Bellis_129 (L3), Clautastrophe_128 (L3), Finnry_127 (L3), Jubie_129 (L3), Samty_127 (L3), Snenia_128 (L3),

Start 11:

- Found in 31 of 60 (51.7%) of genes in pham
- Manual Annotations of this start: 11 of 42
- Called 51.6% of time when present
- Phage (with cluster) where this start called: Archie_135 (L2), Crossroads_138 (L2), DHan_137 (L2), DrSeegs_133 (L2), Gabriela_135 (L2), GuuelaD_132 (L2), Itos_135 (L2), Kahlid_135 (L2), Lewan_137 (L2), Loadrie_136 (L2), Lynnae_136 (L2), Miley16_135 (L2), Rossetti_138 (L2), SoJulia_139 (L2), Soap141_137 (L2), Wigglewiggie_136 (L2),

Start 12:

- Found in 40 of 60 (66.7%) of genes in pham
- Manual Annotations of this start: 1 of 42
- Called 15.0% of time when present

- Phage (with cluster) where this start called: BrainDrainer_148 (L4), Douzhi_148 (L4), PYPDinur_147 (L4), Quby_148 (L4), Sheng711_148 (L4), Underpass_128 (L2),

Start 14:

- Found in 60 of 60 (100.0%) of genes in pham
- Manual Annotations of this start: 20 of 42
- Called 36.7% of time when present
- Phage (with cluster) where this start called: Bazzle_134 (L2), BigCheese_134 (L2), Breezona_135 (L2), DuncansLeg_129 (L3), Faith1_133 (L2), FarmResident_145 (L4), Gardann_135 (L2), Krypton555_131 (L3), LilDestine_132 (L2), Lumos_129 (L3), MiniLon_133 (L3), MkaliMitinis3_137 (L2), Netyap_133 (L2), Nicholasp3_136 (L2), Tourach_137 (L2), TriFive_130 (L3), Vetrix_135 (L2), Whirlwind_130 (L3), Wilder_136 (L2), Winky_135 (L2), Zakai_137 (L2), ZhongYanYuan_134 (L2),

Start 16:

- Found in 20 of 60 (33.3%) of genes in pham
- No Manual Annotations of this start.
- Called 5.0% of time when present
- Phage (with cluster) where this start called: Ellson_127 (L3),

Start 18:

- Found in 25 of 60 (41.7%) of genes in pham
- Manual Annotations of this start: 3 of 42
- Called 24.0% of time when present
- Phage (with cluster) where this start called: BourbonZero_129 (L3), Jobypre_129 (L3), KirDoubleO7_126 (L3), Lolly9_129 (L3), MsGreen_130 (L3), Red305_130 (L3),

Summary by clusters:

There are 3 clusters represented in this pham: L4, L2, L3,

Info for manual annotations of cluster L2:

- Start number 11 was manually annotated 11 times for cluster L2.
- Start number 12 was manually annotated 1 time for cluster L2.
- Start number 14 was manually annotated 14 times for cluster L2.

Info for manual annotations of cluster L3:

- Start number 10 was manually annotated 6 times for cluster L3.
- Start number 14 was manually annotated 6 times for cluster L3.
- Start number 18 was manually annotated 3 times for cluster L3.

Info for manual annotations of cluster L4:

- Start number 6 was manually annotated 1 time for cluster L4.

Gene Information:

Gene: Archie_135 Start: 70781, Stop: 70554, Start Num: 11

Candidate Starts for Archie_135:

(3, 70814), (Start: 11 @70781 has 11 MA's), (Start: 12 @70778 has 1 MA's), (Start: 14 @70769 has 20 MA's), (Start: 18 @70721 has 3 MA's), (19, 70697), (24, 70598), (26, 70565),

Gene: Bazzle_134 Start: 71163, Stop: 70948, Start Num: 14
Candidate Starts for Bazzle_134:
(3, 71208), (Start: 11 @71175 has 11 MA's), (Start: 12 @71172 has 1 MA's), (Start: 14 @71163 has 20 MA's), (Start: 18 @71115 has 3 MA's), (19, 71091), (24, 70992), (26, 70959),

Gene: Bellis_129 Start: 69492, Stop: 69292, Start Num: 10
Candidate Starts for Bellis_129:
(Start: 10 @69492 has 6 MA's), (Start: 14 @69477 has 20 MA's), (16, 69438), (17, 69432), (Start: 18 @69429 has 3 MA's), (21, 69363), (24, 69306),

Gene: BigCheese_134 Start: 70424, Stop: 70221, Start Num: 14
Candidate Starts for BigCheese_134:
(Start: 11 @70436 has 11 MA's), (Start: 12 @70433 has 1 MA's), (Start: 14 @70424 has 20 MA's), (20, 70355), (24, 70265), (26, 70232),

Gene: BourbonZero_129 Start: 69697, Stop: 69560, Start Num: 18
Candidate Starts for BourbonZero_129:
(2, 69796), (7, 69781), (13, 69751), (Start: 14 @69745 has 20 MA's), (16, 69706), (17, 69700), (Start: 18 @69697 has 3 MA's), (21, 69631), (24, 69574),

Gene: BrainDrainer_148 Start: 72473, Stop: 72264, Start Num: 12
Candidate Starts for BrainDrainer_148:
(5, 72506), (7, 72500), (Start: 12 @72473 has 1 MA's), (Start: 14 @72464 has 20 MA's), (17, 72419), (23, 72308), (26, 72275),

Gene: Breezona_135 Start: 70759, Stop: 70556, Start Num: 14
Candidate Starts for Breezona_135:
(Start: 11 @70771 has 11 MA's), (Start: 12 @70768 has 1 MA's), (Start: 14 @70759 has 20 MA's), (20, 70690), (24, 70600), (26, 70567),

Gene: ChutneyChips_148 Start: 72315, Stop: 72076, Start Num: 6
Candidate Starts for ChutneyChips_148:
(5, 72318), (Start: 6 @72315 has 1 MA's), (7, 72312), (Start: 12 @72285 has 1 MA's), (Start: 14 @72276 has 20 MA's), (20, 72207), (23, 72120), (26, 72087),

Gene: Clautastrophe_128 Start: 69603, Stop: 69403, Start Num: 10
Candidate Starts for Clautastrophe_128:
(Start: 10 @69603 has 6 MA's), (Start: 14 @69588 has 20 MA's), (16, 69549), (17, 69543), (Start: 18 @69540 has 3 MA's), (21, 69474), (24, 69417),

Gene: Crossroads_138 Start: 70705, Stop: 70490, Start Num: 11
Candidate Starts for Crossroads_138:
(Start: 11 @70705 has 11 MA's), (Start: 12 @70702 has 1 MA's), (Start: 14 @70693 has 20 MA's), (20, 70624), (24, 70534), (26, 70501),

Gene: DHan_137 Start: 71152, Stop: 70919, Start Num: 11
Candidate Starts for DHan_137:
(Start: 11 @71152 has 11 MA's), (Start: 12 @71149 has 1 MA's), (Start: 14 @71140 has 20 MA's), (Start: 18 @71086 has 3 MA's), (19, 71062), (24, 70963), (26, 70930),

Gene: Douzhi_148 Start: 72645, Stop: 72436, Start Num: 12
Candidate Starts for Douzhi_148:

(5, 72678), (7, 72672), (Start: 12 @72645 has 1 MA's), (Start: 14 @72636 has 20 MA's), (23, 72480), (26, 72447),

Gene: DrSeegs_133 Start: 70771, Stop: 70556, Start Num: 11

Candidate Starts for DrSeegs_133:

(Start: 11 @70771 has 11 MA's), (Start: 12 @70768 has 1 MA's), (Start: 14 @70759 has 20 MA's), (20, 70690), (24, 70600), (26, 70567),

Gene: DuncansLeg_129 Start: 69771, Stop: 69586, Start Num: 14

Candidate Starts for DuncansLeg_129:

(2, 69822), (7, 69807), (13, 69777), (Start: 14 @69771 has 20 MA's), (16, 69732), (17, 69726), (Start: 18 @69723 has 3 MA's), (21, 69657), (24, 69600),

Gene: DyoEdafos_149 Start: 72181, Stop: 71942, Start Num: 6

Candidate Starts for DyoEdafos_149:

(5, 72184), (Start: 6 @72181 has 1 MA's), (7, 72178), (Start: 12 @72151 has 1 MA's), (Start: 14 @72142 has 20 MA's), (20, 72073), (23, 71986), (26, 71953),

Gene: Ellson_127 Start: 69988, Stop: 69842, Start Num: 16

Candidate Starts for Ellson_127:

(2, 70078), (7, 70063), (13, 70033), (Start: 14 @70027 has 20 MA's), (16, 69988), (17, 69982), (Start: 18 @69979 has 3 MA's), (21, 69913), (24, 69856),

Gene: Faith1_133 Start: 70067, Stop: 69864, Start Num: 14

Candidate Starts for Faith1_133:

(Start: 11 @70079 has 11 MA's), (Start: 12 @70076 has 1 MA's), (Start: 14 @70067 has 20 MA's), (20, 69998), (24, 69908), (26, 69875),

Gene: FarmResident_145 Start: 71991, Stop: 71791, Start Num: 14

Candidate Starts for FarmResident_145:

(Start: 14 @71991 has 20 MA's), (23, 71835), (26, 71802),

Gene: Finnry_127 Start: 69840, Stop: 69640, Start Num: 10

Candidate Starts for Finnry_127:

(Start: 10 @69840 has 6 MA's), (Start: 14 @69825 has 20 MA's), (16, 69786), (17, 69780), (Start: 18 @69777 has 3 MA's), (21, 69711), (24, 69654),

Gene: Gabriela_135 Start: 69867, Stop: 69652, Start Num: 11

Candidate Starts for Gabriela_135:

(Start: 11 @69867 has 11 MA's), (Start: 12 @69864 has 1 MA's), (Start: 14 @69855 has 20 MA's), (20, 69786), (24, 69696), (26, 69663),

Gene: Gardann_135 Start: 70532, Stop: 70329, Start Num: 14

Candidate Starts for Gardann_135:

(Start: 11 @70544 has 11 MA's), (Start: 12 @70541 has 1 MA's), (Start: 14 @70532 has 20 MA's), (20, 70463), (24, 70373), (26, 70340),

Gene: GuuelaD_132 Start: 70588, Stop: 70370, Start Num: 11

Candidate Starts for GuuelaD_132:

(Start: 11 @70588 has 11 MA's), (Start: 12 @70585 has 1 MA's), (Start: 14 @70576 has 20 MA's), (16, 70534), (17, 70528), (24, 70414), (26, 70381),

Gene: Itos_135 Start: 68985, Stop: 68770, Start Num: 11

Candidate Starts for Itos_135:

(Start: 11 @68985 has 11 MA's), (Start: 12 @68982 has 1 MA's), (Start: 14 @68973 has 20 MA's), (20, 68904), (24, 68814), (26, 68781),

Gene: Jobypre_129 Start: 69538, Stop: 69401, Start Num: 18

Candidate Starts for Jobypre_129:

(Start: 10 @69601 has 6 MA's), (Start: 14 @69586 has 20 MA's), (16, 69547), (17, 69541), (Start: 18 @69538 has 3 MA's), (21, 69472), (24, 69415),

Gene: Jubie_129 Start: 69736, Stop: 69536, Start Num: 10

Candidate Starts for Jubie_129:

(Start: 10 @69736 has 6 MA's), (Start: 14 @69721 has 20 MA's), (16, 69682), (17, 69676), (Start: 18 @69673 has 3 MA's), (21, 69607), (24, 69550),

Gene: Kahlid_135 Start: 70468, Stop: 70253, Start Num: 11

Candidate Starts for Kahlid_135:

(Start: 11 @70468 has 11 MA's), (Start: 12 @70465 has 1 MA's), (Start: 14 @70456 has 20 MA's), (20, 70387), (24, 70297), (26, 70264),

Gene: KirDoubleO7_126 Start: 69670, Stop: 69533, Start Num: 18

Candidate Starts for KirDoubleO7_126:

(2, 69769), (7, 69754), (13, 69724), (Start: 14 @69718 has 20 MA's), (16, 69679), (17, 69673), (Start: 18 @69670 has 3 MA's), (21, 69604), (24, 69547),

Gene: Kropertea_141 Start: 71849, Stop: 71610, Start Num: 6

Candidate Starts for Kropertea_141:

(5, 71852), (Start: 6 @71849 has 1 MA's), (7, 71846), (Start: 12 @71819 has 1 MA's), (Start: 14 @71810 has 20 MA's), (20, 71741), (23, 71654), (26, 71621),

Gene: Krypton555_131 Start: 69967, Stop: 69782, Start Num: 14

Candidate Starts for Krypton555_131:

(Start: 10 @69982 has 6 MA's), (Start: 14 @69967 has 20 MA's), (16, 69928), (17, 69922), (Start: 18 @69919 has 3 MA's), (21, 69853), (24, 69796),

Gene: Lewan_137 Start: 71114, Stop: 70899, Start Num: 11

Candidate Starts for Lewan_137:

(Start: 11 @71114 has 11 MA's), (Start: 12 @71111 has 1 MA's), (Start: 14 @71102 has 20 MA's), (20, 71033), (24, 70943), (26, 70910),

Gene: LilDestine_132 Start: 69626, Stop: 69423, Start Num: 14

Candidate Starts for LilDestine_132:

(Start: 11 @69638 has 11 MA's), (Start: 12 @69635 has 1 MA's), (Start: 14 @69626 has 20 MA's), (20, 69557), (24, 69467), (26, 69434),

Gene: Loadrie_136 Start: 71095, Stop: 70880, Start Num: 11

Candidate Starts for Loadrie_136:

(Start: 11 @71095 has 11 MA's), (Start: 12 @71092 has 1 MA's), (Start: 14 @71083 has 20 MA's), (20, 71014), (24, 70924), (26, 70891),

Gene: Lolly9_129 Start: 70076, Stop: 69939, Start Num: 18

Candidate Starts for Lolly9_129:

(4, 70166), (Start: 10 @70139 has 6 MA's), (Start: 14 @70124 has 20 MA's), (16, 70085), (17, 70079), (Start: 18 @70076 has 3 MA's), (21, 70010), (24, 69953),

Gene: Lumos_129 Start: 69583, Stop: 69398, Start Num: 14

Candidate Starts for Lumos_129:

(Start: 10 @69598 has 6 MA's), (Start: 14 @69583 has 20 MA's), (16, 69544), (17, 69538), (Start: 18 @69535 has 3 MA's), (21, 69469), (24, 69412),

Gene: Lynnae_136 Start: 70281, Stop: 70066, Start Num: 11

Candidate Starts for Lynnae_136:

(Start: 11 @70281 has 11 MA's), (Start: 12 @70278 has 1 MA's), (Start: 14 @70269 has 20 MA's), (20, 70200), (24, 70110), (26, 70077),

Gene: Miley16_135 Start: 70771, Stop: 70556, Start Num: 11

Candidate Starts for Miley16_135:

(Start: 11 @70771 has 11 MA's), (Start: 12 @70768 has 1 MA's), (Start: 14 @70759 has 20 MA's), (20, 70690), (24, 70600), (26, 70567),

Gene: MiniLon_133 Start: 70125, Stop: 69940, Start Num: 14

Candidate Starts for MiniLon_133:

(4, 70167), (Start: 10 @70140 has 6 MA's), (Start: 14 @70125 has 20 MA's), (16, 70086), (17, 70080), (Start: 18 @70077 has 3 MA's), (21, 70011), (24, 69954),

Gene: MkaliMitinis3_137 Start: 70464, Stop: 70252, Start Num: 14

Candidate Starts for MkaliMitinis3_137:

(9, 70485), (Start: 11 @70476 has 11 MA's), (Start: 12 @70473 has 1 MA's), (Start: 14 @70464 has 20 MA's), (15, 70452), (Start: 18 @70419 has 3 MA's), (22, 70350), (24, 70296), (25, 70281), (26, 70263),

Gene: MsGreen_130 Start: 69538, Stop: 69401, Start Num: 18

Candidate Starts for MsGreen_130:

(Start: 10 @69601 has 6 MA's), (Start: 14 @69586 has 20 MA's), (16, 69547), (17, 69541), (Start: 18 @69538 has 3 MA's), (21, 69472), (24, 69415),

Gene: Netyap_133 Start: 70473, Stop: 70270, Start Num: 14

Candidate Starts for Netyap_133:

(Start: 11 @70485 has 11 MA's), (Start: 12 @70482 has 1 MA's), (Start: 14 @70473 has 20 MA's), (20, 70404), (24, 70314), (26, 70281),

Gene: Nicholasp3_136 Start: 70532, Stop: 70329, Start Num: 14

Candidate Starts for Nicholasp3_136:

(Start: 11 @70544 has 11 MA's), (Start: 12 @70541 has 1 MA's), (Start: 14 @70532 has 20 MA's), (20, 70463), (24, 70373), (26, 70340),

Gene: PYPDinur_147 Start: 72457, Stop: 72248, Start Num: 12

Candidate Starts for PYPDinur_147:

(5, 72490), (7, 72484), (Start: 12 @72457 has 1 MA's), (Start: 14 @72448 has 20 MA's), (23, 72292), (26, 72259),

Gene: Quby_148 Start: 72325, Stop: 72116, Start Num: 12

Candidate Starts for Quby_148:

(5, 72358), (7, 72352), (Start: 12 @72325 has 1 MA's), (Start: 14 @72316 has 20 MA's), (23, 72160), (26, 72127),

Gene: Red305_130 Start: 69538, Stop: 69401, Start Num: 18

Candidate Starts for Red305_130:

(Start: 10 @69601 has 6 MA's), (Start: 14 @69586 has 20 MA's), (16, 69547), (17, 69541), (Start: 18 @69538 has 3 MA's), (21, 69472), (24, 69415),

Gene: Rossetti_138 Start: 71009, Stop: 70845, Start Num: 11

Candidate Starts for Rossetti_138:

(Start: 11 @71009 has 11 MA's), (Start: 12 @71006 has 1 MA's), (Start: 14 @70997 has 20 MA's), (20, 70928),

Gene: Samty_127 Start: 69583, Stop: 69383, Start Num: 10

Candidate Starts for Samty_127:

(Start: 10 @69583 has 6 MA's), (Start: 14 @69568 has 20 MA's), (16, 69529), (17, 69523), (Start: 18 @69520 has 3 MA's), (21, 69454), (24, 69397),

Gene: Sheng711_148 Start: 72041, Stop: 71832, Start Num: 12

Candidate Starts for Sheng711_148:

(5, 72074), (7, 72068), (Start: 12 @72041 has 1 MA's), (Start: 14 @72032 has 20 MA's), (23, 71876), (26, 71843),

Gene: Snenia_128 Start: 69602, Stop: 69402, Start Num: 10

Candidate Starts for Snenia_128:

(Start: 10 @69602 has 6 MA's), (Start: 14 @69587 has 20 MA's), (16, 69548), (17, 69542), (Start: 18 @69539 has 3 MA's), (21, 69473), (24, 69416),

Gene: SoJulia_139 Start: 72547, Stop: 72332, Start Num: 11

Candidate Starts for SoJulia_139:

(Start: 11 @72547 has 11 MA's), (Start: 12 @72544 has 1 MA's), (Start: 14 @72535 has 20 MA's), (20, 72466), (24, 72376), (26, 72343),

Gene: Soap141_137 Start: 71440, Stop: 71225, Start Num: 11

Candidate Starts for Soap141_137:

(Start: 11 @71440 has 11 MA's), (Start: 12 @71437 has 1 MA's), (Start: 14 @71428 has 20 MA's), (20, 71359), (24, 71269), (26, 71236),

Gene: Tourach_137 Start: 72248, Stop: 72033, Start Num: 14

Candidate Starts for Tourach_137:

(1, 72449), (8, 72278), (Start: 12 @72257 has 1 MA's), (Start: 14 @72248 has 20 MA's), (15, 72233), (Start: 18 @72200 has 3 MA's), (19, 72176), (24, 72077), (26, 72044),

Gene: TriFive_130 Start: 69699, Stop: 69514, Start Num: 14

Candidate Starts for TriFive_130:

(Start: 10 @69714 has 6 MA's), (Start: 14 @69699 has 20 MA's), (16, 69660), (17, 69654), (Start: 18 @69651 has 3 MA's), (21, 69585), (24, 69528),

Gene: Underpass_128 Start: 65581, Stop: 65369, Start Num: 12

Candidate Starts for Underpass_128:

(Start: 11 @65584 has 11 MA's), (Start: 12 @65581 has 1 MA's), (Start: 14 @65572 has 20 MA's), (20, 65503), (24, 65413), (26, 65380),

Gene: Vetrrix_135 Start: 71069, Stop: 70866, Start Num: 14

Candidate Starts for Vetrrix_135:

(Start: 11 @71081 has 11 MA's), (Start: 12 @71078 has 1 MA's), (Start: 14 @71069 has 20 MA's), (20, 71000), (24, 70910), (26, 70877),

Gene: Whirlwind_130 Start: 70059, Stop: 69874, Start Num: 14

Candidate Starts for Whirlwind_130:

(2, 70110), (7, 70095), (13, 70065), (Start: 14 @70059 has 20 MA's), (16, 70020), (17, 70014), (Start: 18 @70011 has 3 MA's), (21, 69945), (24, 69888),

Gene: Wigglewigggle_136 Start: 70677, Stop: 70462, Start Num: 11

Candidate Starts for Wigglewigggle_136:

(Start: 11 @70677 has 11 MA's), (Start: 12 @70674 has 1 MA's), (Start: 14 @70665 has 20 MA's), (20, 70596), (24, 70506), (26, 70473),

Gene: Wilder_136 Start: 70310, Stop: 70107, Start Num: 14

Candidate Starts for Wilder_136:

(Start: 11 @70322 has 11 MA's), (Start: 12 @70319 has 1 MA's), (Start: 14 @70310 has 20 MA's), (20, 70241), (24, 70151), (26, 70118),

Gene: Winky_135 Start: 70760, Stop: 70557, Start Num: 14

Candidate Starts for Winky_135:

(Start: 11 @70772 has 11 MA's), (Start: 12 @70769 has 1 MA's), (Start: 14 @70760 has 20 MA's), (20, 70691), (24, 70601), (26, 70568),

Gene: Zakai_137 Start: 70470, Stop: 70267, Start Num: 14

Candidate Starts for Zakai_137:

(Start: 11 @70482 has 11 MA's), (Start: 12 @70479 has 1 MA's), (Start: 14 @70470 has 20 MA's), (20, 70401), (24, 70311), (26, 70278),

Gene: ZhongYanYuan_134 Start: 70480, Stop: 70259, Start Num: 14

Candidate Starts for ZhongYanYuan_134:

(Start: 11 @70492 has 11 MA's), (Start: 12 @70489 has 1 MA's), (Start: 14 @70480 has 20 MA's), (Start: 18 @70426 has 3 MA's), (19, 70402), (24, 70303), (26, 70270),