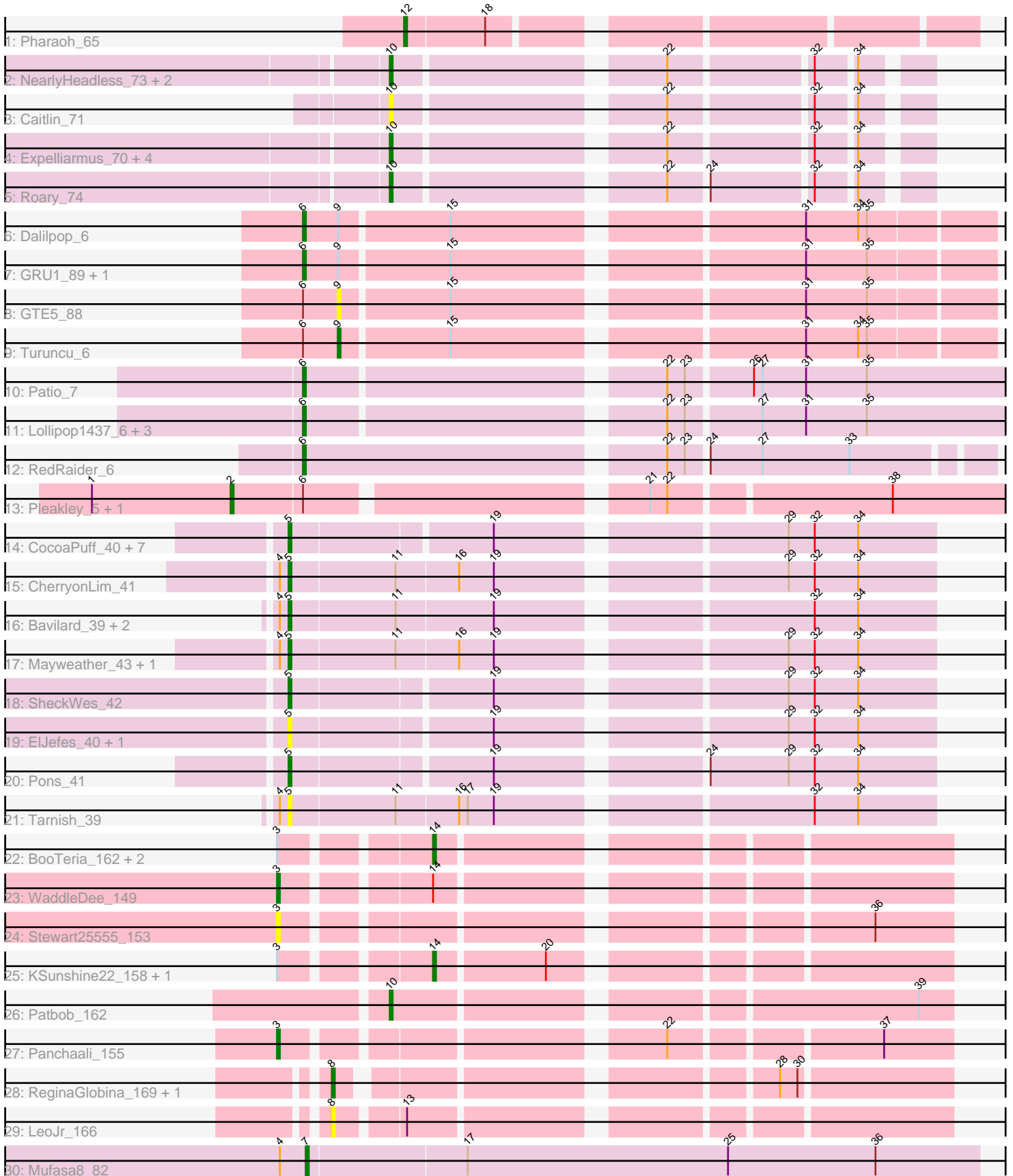


Pham 294775



Note: Tracks are now grouped by subcluster and scaled. Switching in subcluster is indicated by changes in track color. Track scale is now set by default to display the region 30 bp upstream of start 1 to 30 bp downstream of the last possible start. If this default region is judged to be packed too tightly with annotated starts, the track will be further scaled to only show that region of the ORF with annotated starts. This action will be indicated by adding "Zoomed" to the title. For starts, yellow indicates the location of called starts comprised solely of Glimmer/GeneMark auto-annotations, green indicates the location of called starts with at least 1 manual gene annotation.

Pham 294775 Report

This analysis was run 04/18/26 on database version 643.

Pham number 294775 has 56 members, 15 are drafts.

Phages represented in each track:

- Track 1 : Pharaoh_65
- Track 2 : NearlyHeadless_73, Saintus_68, Dixon_72
- Track 3 : Caitlin_71
- Track 4 : Expelliarmus_70, Groundhog_72, Astro_73, Danforth_73, Smeadley_73
- Track 5 : Roary_74
- Track 6 : Dalilpop_6
- Track 7 : GRU1_89, Flapper_6
- Track 8 : GTE5_88
- Track 9 : Turuncu_6
- Track 10 : Patio_7
- Track 11 : Lollipop1437_6, Float294_6, Ennea_6, Skysand_6
- Track 12 : RedRaider_6
- Track 13 : Pleakley_5, Fury_5
- Track 14 : CocoaPuff_40, Balloona_38, BigChungus_39, SummitAcademy_39, Vine_42, Yucky_42, PotPie_40, Feastonyeet_39
- Track 15 : CherryonLim_41
- Track 16 : Bavidard_39, Elinal_43, KayGee_41
- Track 17 : Mayweather_43, Lauer_36
- Track 18 : SheckWes_42
- Track 19 : ElJefes_40, McDazzle_41
- Track 20 : Pons_41
- Track 21 : Tarnish_39
- Track 22 : BooTeria_162, Emmetator_156, DunneganBoMo_153
- Track 23 : WaddleDee_149
- Track 24 : Stewart25555_153
- Track 25 : KSunshine22_158, Ellewin_153
- Track 26 : Patbob_162
- Track 27 : Panchaali_155
- Track 28 : ReginaGlobina_169, Atuin_156
- Track 29 : LeoJr_166
- Track 30 : Mufasa8_82

Summary of Final Annotations (See graph section above for start numbers):

The start number called the most often in the published annotations is 5, it was called in 13 of the 41 non-draft genes in the pham.

Genes that call this "Most Annotated" start:

- Balloona_38, Bavidard_39, BigChungus_39, CherryonLim_41, CocoaPuff_40, ElJefes_40, Elinal_43, Feastonyeet_39, KayGee_41, Lauer_36, Mayweather_43, McDazzle_41, Pons_41, PotPie_40, SheckWes_42, SummitAcademy_39, Tarnish_39, Vine_42, Yucky_42,

Genes that have the "Most Annotated" start but do not call it:

-

Genes that do not have the "Most Annotated" start:

- Astro_73, Atuin_156, BooTeria_162, Caitlin_71, Dalilpop_6, Danforth_73, Dixon_72, DunneganBoMo_153, Ellewin_153, Emmetator_156, Ennea_6, Expelliarmus_70, Flapper_6, Float294_6, Fury_5, GRU1_89, GTE5_88, Groundhog_72, KSunshine22_158, LeoJr_166, Lollipop1437_6, Mufasa8_82, NearlyHeadless_73, Panchaali_155, Patbob_162, Patio_7, Pharaoh_65, Pleakley_5, RedRaider_6, ReginaGlobina_169, Roary_74, Saintus_68, Skysand_6, Smeadley_73, Stewart25555_153, Turuncu_6, WaddleDee_149,

Summary by start number:

Start 2:

- Found in 2 of 56 (3.6%) of genes in pham
- Manual Annotations of this start: 2 of 41
- Called 100.0% of time when present
- Phage (with cluster) where this start called: Fury_5 (CR5), Pleakley_5 (CR5),

Start 3:

- Found in 8 of 56 (14.3%) of genes in pham
- Manual Annotations of this start: 2 of 41
- Called 37.5% of time when present
- Phage (with cluster) where this start called: Panchaali_155 (FC), Stewart25555_153 (FC), WaddleDee_149 (FC),

Start 5:

- Found in 19 of 56 (33.9%) of genes in pham
- Manual Annotations of this start: 13 of 41
- Called 100.0% of time when present
- Phage (with cluster) where this start called: Balloona_38 (CT), Bavidard_39 (CT), BigChungus_39 (CT), CherryonLim_41 (CT), CocoaPuff_40 (CT), ElJefes_40 (CT), Elinal_43 (CT), Feastonyeet_39 (CT), KayGee_41 (CT), Lauer_36 (CT), Mayweather_43 (CT), McDazzle_41 (CT), Pons_41 (CT), PotPie_40 (CT), SheckWes_42 (CT), SummitAcademy_39 (CT), Tarnish_39 (CT), Vine_42 (CT), Yucky_42 (CT),

Start 6:

- Found in 13 of 56 (23.2%) of genes in pham
- Manual Annotations of this start: 8 of 41
- Called 69.2% of time when present
- Phage (with cluster) where this start called: Dalilpop_6 (CR1), Ennea_6 (CR3), Flapper_6 (CR1), Float294_6 (CR3), GRU1_89 (CR1), Lollipop1437_6 (CR3),

Patio_7 (CR3), RedRaider_6 (CR3), Skysand_6 (CR3),

Start 7:

- Found in 1 of 56 (1.8%) of genes in pham
- Manual Annotations of this start: 1 of 41
- Called 100.0% of time when present
- Phage (with cluster) where this start called: Mufasa8_82 (FG),

Start 8:

- Found in 3 of 56 (5.4%) of genes in pham
- Manual Annotations of this start: 1 of 41
- Called 100.0% of time when present
- Phage (with cluster) where this start called: Atuin_156 (FC), LeoJr_166 (FC), ReginaGlobina_169 (FC),

Start 9:

- Found in 5 of 56 (8.9%) of genes in pham
- Manual Annotations of this start: 1 of 41
- Called 40.0% of time when present
- Phage (with cluster) where this start called: GTE5_88 (CR1), Turuncu_6 (CR1),

Start 10:

- Found in 11 of 56 (19.6%) of genes in pham
- Manual Annotations of this start: 10 of 41
- Called 100.0% of time when present
- Phage (with cluster) where this start called: Astro_73 (A8), Caitlin_71 (A8), Danforth_73 (A8), Dixon_72 (A8), Expelliarmus_70 (A8), Groundhog_72 (A8), NearlyHeadless_73 (A8), Patbob_162 (FC), Roary_74 (A8), Saintus_68 (A8), Smeadley_73 (A8),

Start 12:

- Found in 1 of 56 (1.8%) of genes in pham
- Manual Annotations of this start: 1 of 41
- Called 100.0% of time when present
- Phage (with cluster) where this start called: Pharaoh_65 (A12),

Start 14:

- Found in 6 of 56 (10.7%) of genes in pham
- Manual Annotations of this start: 2 of 41
- Called 83.3% of time when present
- Phage (with cluster) where this start called: BooTeria_162 (FC), DunneganBoMo_153 (FC), Ellewin_153 (FC), Emmetator_156 (FC), KSunshine22_158 (FC),

Summary by clusters:

There are 8 clusters represented in this pham: CR3, CR1, CR5, A12, FC, FG, A8, CT,

Info for manual annotations of cluster A12:

- Start number 12 was manually annotated 1 time for cluster A12.

Info for manual annotations of cluster A8:

- Start number 10 was manually annotated 9 times for cluster A8.

Info for manual annotations of cluster CR1:

- Start number 6 was manually annotated 2 times for cluster CR1.
- Start number 9 was manually annotated 1 time for cluster CR1.

Info for manual annotations of cluster CR3:

- Start number 6 was manually annotated 6 times for cluster CR3.

Info for manual annotations of cluster CR5:

- Start number 2 was manually annotated 2 times for cluster CR5.

Info for manual annotations of cluster CT:

- Start number 5 was manually annotated 13 times for cluster CT.

Info for manual annotations of cluster FC:

- Start number 3 was manually annotated 2 times for cluster FC.
- Start number 8 was manually annotated 1 time for cluster FC.
- Start number 10 was manually annotated 1 time for cluster FC.
- Start number 14 was manually annotated 2 times for cluster FC.

Info for manual annotations of cluster FG:

- Start number 7 was manually annotated 1 time for cluster FG.

Gene Information:

Gene: Astro_73 Start: 40939, Stop: 40778, Start Num: 10

Candidate Starts for Astro_73:

(Start: 10 @40939 has 10 MA's), (22, 40855), (32, 40810), (34, 40798),

Gene: Atuin_156 Start: 110180, Stop: 110365, Start Num: 8

Candidate Starts for Atuin_156:

(Start: 8 @110180 has 1 MA's), (28, 110309), (30, 110315),

Gene: Balloona_38 Start: 28381, Stop: 28175, Start Num: 5

Candidate Starts for Balloona_38:

(Start: 5 @28381 has 13 MA's), (19, 28315), (29, 28225), (32, 28216), (34, 28201),

Gene: Bavilard_39 Start: 28599, Stop: 28390, Start Num: 5

Candidate Starts for Bavilard_39:

(4, 28602), (Start: 5 @28599 has 13 MA's), (11, 28563), (19, 28530), (32, 28431), (34, 28416),

Gene: BigChungus_39 Start: 28782, Stop: 28576, Start Num: 5

Candidate Starts for BigChungus_39:

(Start: 5 @28782 has 13 MA's), (19, 28716), (29, 28626), (32, 28617), (34, 28602),

Gene: BooTeria_162 Start: 107851, Stop: 108009, Start Num: 14

Candidate Starts for BooTeria_162:

(Start: 3 @107806 has 2 MA's), (Start: 14 @107851 has 2 MA's),

Gene: Caitlin_71 Start: 40640, Stop: 40479, Start Num: 10

Candidate Starts for Caitlin_71:

(Start: 10 @40640 has 10 MA's), (22, 40556), (32, 40511), (34, 40499),

Gene: CherryonLim_41 Start: 29932, Stop: 29723, Start Num: 5

Candidate Starts for CherryonLim_41:

(4, 29935), (Start: 5 @29932 has 13 MA's), (11, 29896), (16, 29875), (19, 29863), (29, 29773), (32, 29764), (34, 29749),

Gene: CocoaPuff_40 Start: 28796, Stop: 28590, Start Num: 5

Candidate Starts for CocoaPuff_40:

(Start: 5 @28796 has 13 MA's), (19, 28730), (29, 28640), (32, 28631), (34, 28616),

Gene: Dalilpop_6 Start: 4569, Stop: 4790, Start Num: 6

Candidate Starts for Dalilpop_6:

(Start: 6 @4569 has 8 MA's), (Start: 9 @4581 has 1 MA's), (15, 4617), (31, 4728), (34, 4746), (35, 4749),

Gene: Danforth_73 Start: 40987, Stop: 40826, Start Num: 10

Candidate Starts for Danforth_73:

(Start: 10 @40987 has 10 MA's), (22, 40903), (32, 40858), (34, 40846),

Gene: Dixon_72 Start: 40507, Stop: 40346, Start Num: 10

Candidate Starts for Dixon_72:

(Start: 10 @40507 has 10 MA's), (22, 40423), (32, 40378), (34, 40366),

Gene: DunneganBoMo_153 Start: 107120, Stop: 107278, Start Num: 14

Candidate Starts for DunneganBoMo_153:

(Start: 3 @107075 has 2 MA's), (Start: 14 @107120 has 2 MA's),

Gene: ElJefes_40 Start: 29121, Stop: 28915, Start Num: 5

Candidate Starts for ElJefes_40:

(Start: 5 @29121 has 13 MA's), (19, 29055), (29, 28965), (32, 28956), (34, 28941),

Gene: Elinal_43 Start: 29167, Stop: 28958, Start Num: 5

Candidate Starts for Elinal_43:

(4, 29170), (Start: 5 @29167 has 13 MA's), (11, 29131), (19, 29098), (32, 28999), (34, 28984),

Gene: Ellewin_153 Start: 107224, Stop: 107382, Start Num: 14

Candidate Starts for Ellewin_153:

(Start: 3 @107179 has 2 MA's), (Start: 14 @107224 has 2 MA's), (20, 107260),

Gene: Emmetator_156 Start: 107433, Stop: 107591, Start Num: 14

Candidate Starts for Emmetator_156:

(Start: 3 @107388 has 2 MA's), (Start: 14 @107433 has 2 MA's),

Gene: Ennea_6 Start: 4376, Stop: 4606, Start Num: 6

Candidate Starts for Ennea_6:

(Start: 6 @4376 has 8 MA's), (22, 4490), (23, 4496), (27, 4520), (31, 4535), (35, 4556),

Gene: Expelliarmus_70 Start: 40711, Stop: 40550, Start Num: 10

Candidate Starts for Expelliarmus_70:

(Start: 10 @40711 has 10 MA's), (22, 40627), (32, 40582), (34, 40570),

Gene: Feastonyeet_39 Start: 28782, Stop: 28576, Start Num: 5

Candidate Starts for Feastonyeet_39:

(Start: 5 @28782 has 13 MA's), (19, 28716), (29, 28626), (32, 28617), (34, 28602),

Gene: Flapper_6 Start: 3864, Stop: 4085, Start Num: 6

Candidate Starts for Flapper_6:

(Start: 6 @3864 has 8 MA's), (Start: 9 @3876 has 1 MA's), (15, 3912), (31, 4023), (35, 4044),

Gene: Float294_6 Start: 4362, Stop: 4592, Start Num: 6

Candidate Starts for Float294_6:

(Start: 6 @4362 has 8 MA's), (22, 4476), (23, 4482), (27, 4506), (31, 4521), (35, 4542),

Gene: Fury_5 Start: 2948, Stop: 3193, Start Num: 2

Candidate Starts for Fury_5:

(1, 2900), (Start: 2 @2948 has 2 MA's), (Start: 6 @2972 has 8 MA's), (21, 3077), (22, 3083), (38, 3155),

Gene: GRU1_89 Start: 62882, Stop: 63103, Start Num: 6

Candidate Starts for GRU1_89:

(Start: 6 @62882 has 8 MA's), (Start: 9 @62894 has 1 MA's), (15, 62930), (31, 63041), (35, 63062),

Gene: GTE5_88 Start: 63789, Stop: 63998, Start Num: 9

Candidate Starts for GTE5_88:

(Start: 6 @63777 has 8 MA's), (Start: 9 @63789 has 1 MA's), (15, 63825), (31, 63936), (35, 63957),

Gene: Groundhog_72 Start: 40917, Stop: 40756, Start Num: 10

Candidate Starts for Groundhog_72:

(Start: 10 @40917 has 10 MA's), (22, 40833), (32, 40788), (34, 40776),

Gene: KSunshine22_158 Start: 108183, Stop: 108341, Start Num: 14

Candidate Starts for KSunshine22_158:

(Start: 3 @108138 has 2 MA's), (Start: 14 @108183 has 2 MA's), (20, 108219),

Gene: KayGee_41 Start: 29167, Stop: 28958, Start Num: 5

Candidate Starts for KayGee_41:

(4, 29170), (Start: 5 @29167 has 13 MA's), (11, 29131), (19, 29098), (32, 28999), (34, 28984),

Gene: Lauer_36 Start: 29997, Stop: 29788, Start Num: 5

Candidate Starts for Lauer_36:

(4, 30000), (Start: 5 @29997 has 13 MA's), (11, 29961), (16, 29940), (19, 29928), (29, 29838), (32, 29829), (34, 29814),

Gene: LeoJr_166 Start: 110788, Stop: 110976, Start Num: 8

Candidate Starts for LeoJr_166:

(Start: 8 @110788 has 1 MA's), (13, 110809),

Gene: Lollipop1437_6 Start: 4364, Stop: 4594, Start Num: 6

Candidate Starts for Lollipop1437_6:

(Start: 6 @4364 has 8 MA's), (22, 4478), (23, 4484), (27, 4508), (31, 4523), (35, 4544),

Gene: Mayweather_43 Start: 29791, Stop: 29582, Start Num: 5

Candidate Starts for Mayweather_43:

(4, 29794), (Start: 5 @29791 has 13 MA's), (11, 29755), (16, 29734), (19, 29722), (29, 29632), (32, 29623), (34, 29608),

Gene: McDazzle_41 Start: 29115, Stop: 28909, Start Num: 5

Candidate Starts for McDazzle_41:

(Start: 5 @29115 has 13 MA's), (19, 29049), (29, 28959), (32, 28950), (34, 28935),

Gene: Mufasa8_82 Start: 49257, Stop: 49487, Start Num: 7

Candidate Starts for Mufasa8_82:

(4, 49248), (Start: 7 @49257 has 1 MA's), (17, 49311), (25, 49401), (36, 49452),

Gene: NearlyHeadless_73 Start: 40753, Stop: 40592, Start Num: 10

Candidate Starts for NearlyHeadless_73:

(Start: 10 @40753 has 10 MA's), (22, 40669), (32, 40624), (34, 40612),

Gene: Panchaali_155 Start: 107904, Stop: 108107, Start Num: 3

Candidate Starts for Panchaali_155:

(Start: 3 @107904 has 2 MA's), (22, 108018), (37, 108084),

Gene: Patbob_162 Start: 111552, Stop: 111728, Start Num: 10

Candidate Starts for Patbob_162:

(Start: 10 @111552 has 10 MA's), (39, 111717),

Gene: Patio_7 Start: 5032, Stop: 5262, Start Num: 6

Candidate Starts for Patio_7:

(Start: 6 @5032 has 8 MA's), (22, 5146), (23, 5152), (26, 5173), (27, 5176), (31, 5191), (35, 5212),

Gene: Pharaoh_65 Start: 41502, Stop: 41326, Start Num: 12

Candidate Starts for Pharaoh_65:

(Start: 12 @41502 has 1 MA's), (18, 41475),

Gene: Pleakley_5 Start: 2948, Stop: 3193, Start Num: 2

Candidate Starts for Pleakley_5:

(1, 2900), (Start: 2 @2948 has 2 MA's), (Start: 6 @2972 has 8 MA's), (21, 3077), (22, 3083), (38, 3155),

Gene: Pons_41 Start: 29139, Stop: 28933, Start Num: 5

Candidate Starts for Pons_41:

(Start: 5 @29139 has 13 MA's), (19, 29073), (24, 29010), (29, 28983), (32, 28974), (34, 28959),

Gene: PotPie_40 Start: 30073, Stop: 29867, Start Num: 5

Candidate Starts for PotPie_40:

(Start: 5 @30073 has 13 MA's), (19, 30007), (29, 29917), (32, 29908), (34, 29893),

Gene: RedRaider_6 Start: 4303, Stop: 4524, Start Num: 6

Candidate Starts for RedRaider_6:

(Start: 6 @4303 has 8 MA's), (22, 4420), (23, 4426), (24, 4432), (27, 4450), (33, 4480),

Gene: ReginaGlobina_169 Start: 112062, Stop: 112247, Start Num: 8

Candidate Starts for ReginaGlobina_169:

(Start: 8 @112062 has 1 MA's), (28, 112191), (30, 112197),

Gene: Roary_74 Start: 40972, Stop: 40811, Start Num: 10

Candidate Starts for Roary_74:

(Start: 10 @40972 has 10 MA's), (22, 40888), (24, 40876), (32, 40843), (34, 40831),

Gene: Saintus_68 Start: 37637, Stop: 37476, Start Num: 10
Candidate Starts for Saintus_68:
(Start: 10 @37637 has 10 MA's), (22, 37553), (32, 37508), (34, 37496),

Gene: SheckWes_42 Start: 28660, Stop: 28454, Start Num: 5
Candidate Starts for SheckWes_42:
(Start: 5 @28660 has 13 MA's), (19, 28594), (29, 28504), (32, 28495), (34, 28480),

Gene: Skysand_6 Start: 4364, Stop: 4594, Start Num: 6
Candidate Starts for Skysand_6:
(Start: 6 @4364 has 8 MA's), (22, 4478), (23, 4484), (27, 4508), (31, 4523), (35, 4544),

Gene: Smeadley_73 Start: 40833, Stop: 40672, Start Num: 10
Candidate Starts for Smeadley_73:
(Start: 10 @40833 has 10 MA's), (22, 40749), (32, 40704), (34, 40692),

Gene: Stewart25555_153 Start: 108142, Stop: 108345, Start Num: 3
Candidate Starts for Stewart25555_153:
(Start: 3 @108142 has 2 MA's), (36, 108319),

Gene: SummitAcademy_39 Start: 28702, Stop: 28496, Start Num: 5
Candidate Starts for SummitAcademy_39:
(Start: 5 @28702 has 13 MA's), (19, 28636), (29, 28546), (32, 28537), (34, 28522),

Gene: Tarnish_39 Start: 29209, Stop: 29000, Start Num: 5
Candidate Starts for Tarnish_39:
(4, 29212), (Start: 5 @29209 has 13 MA's), (11, 29173), (16, 29152), (17, 29149), (19, 29140), (32, 29041), (34, 29026),

Gene: Turuncu_6 Start: 3772, Stop: 3981, Start Num: 9
Candidate Starts for Turuncu_6:
(Start: 6 @3760 has 8 MA's), (Start: 9 @3772 has 1 MA's), (15, 3808), (31, 3919), (34, 3937), (35, 3940),

Gene: Vine_42 Start: 29438, Stop: 29232, Start Num: 5
Candidate Starts for Vine_42:
(Start: 5 @29438 has 13 MA's), (19, 29372), (29, 29282), (32, 29273), (34, 29258),

Gene: WaddleDee_149 Start: 106261, Stop: 106464, Start Num: 3
Candidate Starts for WaddleDee_149:
(Start: 3 @106261 has 2 MA's), (Start: 14 @106306 has 2 MA's),

Gene: Yucky_42 Start: 29378, Stop: 29172, Start Num: 5
Candidate Starts for Yucky_42:
(Start: 5 @29378 has 13 MA's), (19, 29312), (29, 29222), (32, 29213), (34, 29198),