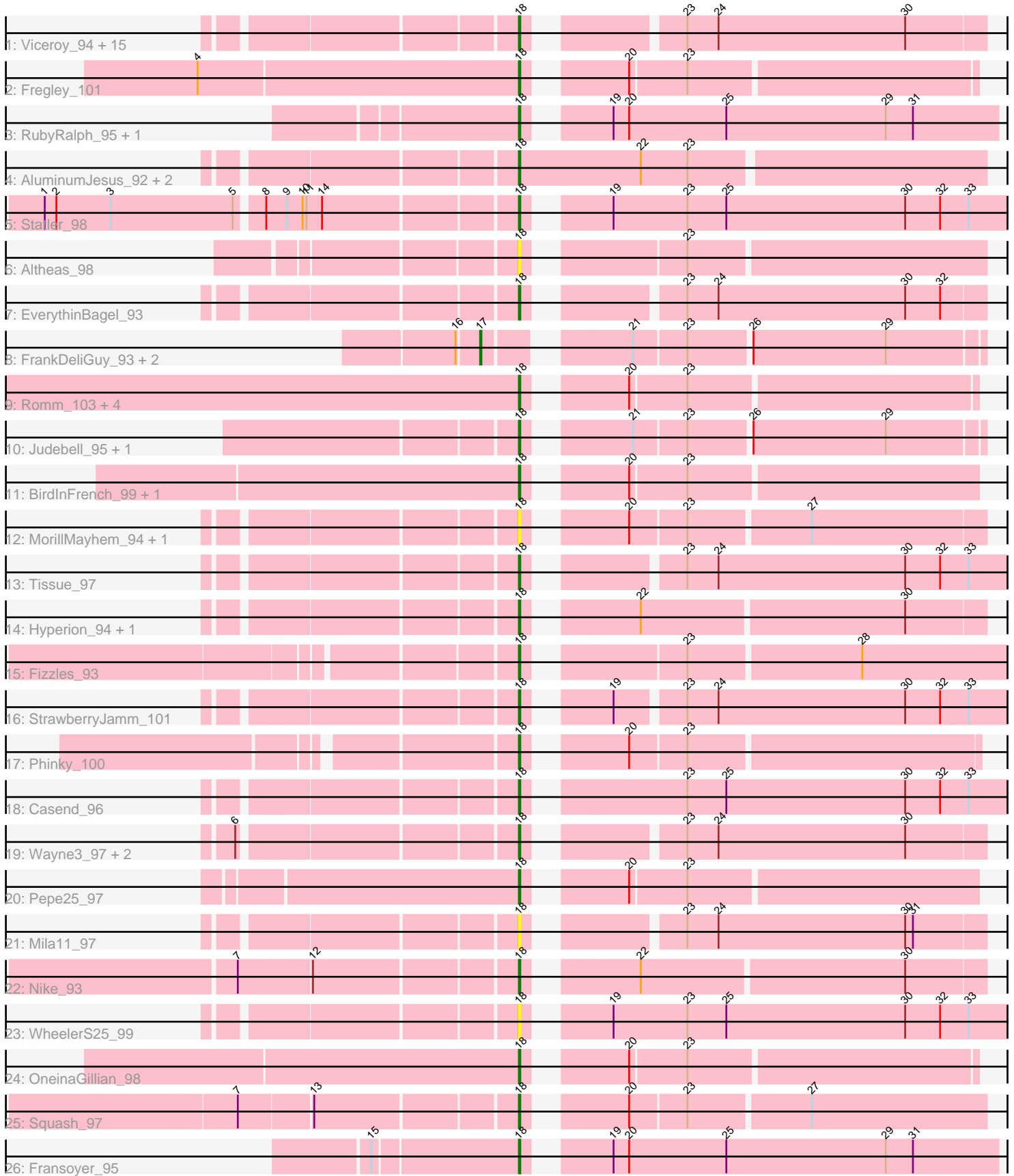


Pham 294776



Note: Tracks are now grouped by subcluster and scaled. Switching in subcluster is indicated by changes in track color. Track scale is now set by default to display the region 30 bp upstream of start 1 to 30 bp downstream of the last possible start. If this default region is judged to be packed too tightly with annotated starts, the track will be further scaled to only show that region of the ORF with annotated starts. This action will be indicated by adding "Zoomed" to the title. For starts, yellow indicates the location of called starts comprised solely of Glimmer/GeneMark auto-annotations, green indicates the location of called starts with at least 1 manual gene annotation.

Pham 294776 Report

This analysis was run 04/18/26 on database version 643.

Pham number 294776 has 56 members, 8 are drafts.

Phages represented in each track:

- Track 1 : Viceroy_94, Namago_97, Mentos_99, Rudy_93, DonaldDuck_95, Kyva_100, Grassboy_100, Zagie_97, SallyK_97, Lonelysoil_93, Sillytadpoles_96, Teehee_96, Zhafia_98, Jehoshaphat_97, Quammi_95, Llemily_95
- Track 2 : Fregley_101
- Track 3 : RubyRalph_95, SadLad_96
- Track 4 : AluminumJesus_92, Gazebo_94, Blab_92
- Track 5 : Statler_98
- Track 6 : Altheas_98
- Track 7 : EverythinBagel_93
- Track 8 : FrankDeliGuy_93, Rowlf_92, SlySloth_97
- Track 9 : Romm_103, KillerQueen_103, Kelcole_100, RobinRose_103, Tempo_102
- Track 10 : Judebell_95, BabyDotz_93
- Track 11 : BirdInFrench_99, Wilca_99
- Track 12 : MorillMayhem_94, BaconCheese_98
- Track 13 : Tissue_97
- Track 14 : Hyperion_94, Mashley_94
- Track 15 : Fizzles_93
- Track 16 : StrawberryJamm_101
- Track 17 : Phinky_100
- Track 18 : Casend_96
- Track 19 : Wayne3_97, Wheelie_95, Phabia_95
- Track 20 : Pepe25_97
- Track 21 : Mila11_97
- Track 22 : Nike_93
- Track 23 : WheelerS25_99
- Track 24 : OneinaGillian_98
- Track 25 : Squash_97
- Track 26 : Fransoyer_95

Summary of Final Annotations (See graph section above for start numbers):

The start number called the most often in the published annotations is 18, it was called in 46 of the 48 non-draft genes in the pham.

Genes that call this "Most Annotated" start:

- Altheas_98, AluminumJesus_92, BabyDotz_93, BaconCheese_98, BirdInFrench_99, Blab_92, Casend_96, DonaldDuck_95, EverythinBagel_93, Fizzles_93, Fransoyer_95, Fregley_101, Gazebo_94, Grassboy_100, Hyperion_94, Jehoshaphat_97, Judebell_95, Kelcole_100, KillerQueen_103, Kyva_100, Llemily_95, Lonelysoil_93, Mashley_94, Mentos_99, Mila11_97, MorillMayhem_94, Namago_97, Nike_93, OneinaGillian_98, Pepe25_97, Phabia_95, Phinky_100, Quammi_95, RobinRose_103, Romm_103, RubyRalph_95, Rudy_93, SadLad_96, SallyK_97, Sillytadpoles_96, Squash_97, Statler_98, StrawberryJamm_101, Teehee_96, Tempo_102, Tissue_97, Viceroy_94, Wayne3_97, WheelerS25_99, Wheelie_95, Wilca_99, Zagie_97, Zhafia_98,

Genes that have the "Most Annotated" start but do not call it:

-

Genes that do not have the "Most Annotated" start:

- FrankDeliGuy_93, Rowlf_92, SlySloth_97,

Summary by start number:

Start 17:

- Found in 3 of 56 (5.4%) of genes in pham
- Manual Annotations of this start: 2 of 48
- Called 100.0% of time when present
- Phage (with cluster) where this start called: FrankDeliGuy_93 (EG), Rowlf_92 (EG), SlySloth_97 (EG),

Start 18:

- Found in 53 of 56 (94.6%) of genes in pham
- Manual Annotations of this start: 46 of 48
- Called 100.0% of time when present
- Phage (with cluster) where this start called: Altheas_98 (EG), AluminumJesus_92 (EG), BabyDotz_93 (EG), BaconCheese_98 (EG), BirdInFrench_99 (EG), Blab_92 (EG), Casend_96 (EG), DonaldDuck_95 (EG), EverythinBagel_93 (EG), Fizzles_93 (EG), Fransoyer_95 (EG), Fregley_101 (EG), Gazebo_94 (EG), Grassboy_100 (EG), Hyperion_94 (EG), Jehoshaphat_97 (EG), Judebell_95 (EG), Kelcole_100 (EG), KillerQueen_103 (EG), Kyva_100 (EG), Llemily_95 (EG), Lonelysoil_93 (EG), Mashley_94 (EG), Mentos_99 (EG), Mila11_97 (EG), MorillMayhem_94 (EG), Namago_97 (EG), Nike_93 (EG), OneinaGillian_98 (EG), Pepe25_97 (EG), Phabia_95 (EG), Phinky_100 (EG), Quammi_95 (EG), RobinRose_103 (EG), Romm_103 (EG), RubyRalph_95 (EG), Rudy_93 (EG), SadLad_96 (EG), SallyK_97 (EG), Sillytadpoles_96 (EG), Squash_97 (EG), Statler_98 (EG), StrawberryJamm_101 (EG), Teehee_96 (EG), Tempo_102 (EG), Tissue_97 (EG), Viceroy_94 (EG), Wayne3_97 (EG), WheelerS25_99 (EG), Wheelie_95 (EG), Wilca_99 (EG), Zagie_97 (EG), Zhafia_98 (EG),

Summary by clusters:

There is one cluster represented in this pham: EG

Info for manual annotations of cluster EG:

- Start number 17 was manually annotated 2 times for cluster EG.
- Start number 18 was manually annotated 46 times for cluster EG.

Gene Information:

Gene: Altheas_98 Start: 58956, Stop: 58630, Start Num: 18

Candidate Starts for Altheas_98:

(Start: 18 @58956 has 46 MA's), (23, 58854),

Gene: AluminumJesus_92 Start: 57388, Stop: 57038, Start Num: 18

Candidate Starts for AluminumJesus_92:

(Start: 18 @57388 has 46 MA's), (22, 57295), (23, 57259),

Gene: BabyDotz_93 Start: 59232, Stop: 58912, Start Num: 18

Candidate Starts for BabyDotz_93:

(Start: 18 @59232 has 46 MA's), (21, 59169), (23, 59130), (26, 59085), (29, 58983),

Gene: BaconCheese_98 Start: 59330, Stop: 59007, Start Num: 18

Candidate Starts for BaconCheese_98:

(Start: 18 @59330 has 46 MA's), (20, 59270), (23, 59228), (27, 59138),

Gene: BirdInFrench_99 Start: 59663, Stop: 59343, Start Num: 18

Candidate Starts for BirdInFrench_99:

(Start: 18 @59663 has 46 MA's), (20, 59603), (23, 59561),

Gene: Blab_92 Start: 57961, Stop: 57611, Start Num: 18

Candidate Starts for Blab_92:

(Start: 18 @57961 has 46 MA's), (22, 57868), (23, 57832),

Gene: Casend_96 Start: 58580, Stop: 58188, Start Num: 18

Candidate Starts for Casend_96:

(Start: 18 @58580 has 46 MA's), (23, 58475), (25, 58445), (30, 58307), (32, 58280), (33, 58259),

Gene: DonaldDuck_95 Start: 57965, Stop: 57642, Start Num: 18

Candidate Starts for DonaldDuck_95:

(Start: 18 @57965 has 46 MA's), (23, 57869), (24, 57845), (30, 57701),

Gene: EverythinBagel_93 Start: 57764, Stop: 57441, Start Num: 18

Candidate Starts for EverythinBagel_93:

(Start: 18 @57764 has 46 MA's), (23, 57668), (24, 57644), (30, 57500), (32, 57473),

Gene: Fizzles_93 Start: 57979, Stop: 57638, Start Num: 18

Candidate Starts for Fizzles_93:

(Start: 18 @57979 has 46 MA's), (23, 57877), (28, 57748),

Gene: FrankDeliGuy_93 Start: 58269, Stop: 57925, Start Num: 17

Candidate Starts for FrankDeliGuy_93:

(16, 58284), (Start: 17 @58269 has 2 MA's), (21, 58182), (23, 58143), (26, 58098), (29, 57996),

Gene: Fransoyer_95 Start: 59536, Stop: 59192, Start Num: 18

Candidate Starts for Fransoyer_95:

(15, 59644), (Start: 18 @59536 has 46 MA's), (19, 59488), (20, 59476), (25, 59401), (29, 59278), (31, 59257),

Gene: Fregley_101 Start: 59890, Stop: 59573, Start Num: 18
Candidate Starts for Fregley_101:
(4, 60133), (Start: 18 @59890 has 46 MA's), (20, 59830), (23, 59788),

Gene: Gazebo_94 Start: 57966, Stop: 57616, Start Num: 18
Candidate Starts for Gazebo_94:
(Start: 18 @57966 has 46 MA's), (22, 57873), (23, 57837),

Gene: Grassboy_100 Start: 58866, Stop: 58543, Start Num: 18
Candidate Starts for Grassboy_100:
(Start: 18 @58866 has 46 MA's), (23, 58770), (24, 58746), (30, 58602),

Gene: Hyperion_94 Start: 58008, Stop: 57682, Start Num: 18
Candidate Starts for Hyperion_94:
(Start: 18 @58008 has 46 MA's), (22, 57939), (30, 57741),

Gene: Jehoshaphat_97 Start: 58599, Stop: 58276, Start Num: 18
Candidate Starts for Jehoshaphat_97:
(Start: 18 @58599 has 46 MA's), (23, 58503), (24, 58479), (30, 58335),

Gene: Judebell_95 Start: 57999, Stop: 57679, Start Num: 18
Candidate Starts for Judebell_95:
(Start: 18 @57999 has 46 MA's), (21, 57936), (23, 57897), (26, 57852), (29, 57750),

Gene: Kelcole_100 Start: 60397, Stop: 60080, Start Num: 18
Candidate Starts for Kelcole_100:
(Start: 18 @60397 has 46 MA's), (20, 60337), (23, 60295),

Gene: KillerQueen_103 Start: 60316, Stop: 59999, Start Num: 18
Candidate Starts for KillerQueen_103:
(Start: 18 @60316 has 46 MA's), (20, 60256), (23, 60214),

Gene: Kyva_100 Start: 58890, Stop: 58567, Start Num: 18
Candidate Starts for Kyva_100:
(Start: 18 @58890 has 46 MA's), (23, 58794), (24, 58770), (30, 58626),

Gene: Llemily_95 Start: 57660, Stop: 57337, Start Num: 18
Candidate Starts for Llemily_95:
(Start: 18 @57660 has 46 MA's), (23, 57564), (24, 57540), (30, 57396),

Gene: Lonelysoil_93 Start: 57421, Stop: 57098, Start Num: 18
Candidate Starts for Lonelysoil_93:
(Start: 18 @57421 has 46 MA's), (23, 57325), (24, 57301), (30, 57157),

Gene: Mashley_94 Start: 58097, Stop: 57771, Start Num: 18
Candidate Starts for Mashley_94:
(Start: 18 @58097 has 46 MA's), (22, 58028), (30, 57830),

Gene: Mentos_99 Start: 59051, Stop: 58728, Start Num: 18
Candidate Starts for Mentos_99:
(Start: 18 @59051 has 46 MA's), (23, 58955), (24, 58931), (30, 58787),

Gene: Mila11_97 Start: 59881, Stop: 59558, Start Num: 18
Candidate Starts for Mila11_97:
(Start: 18 @59881 has 46 MA's), (23, 59785), (24, 59761), (30, 59617), (31, 59611),

Gene: MorillMayhem_94 Start: 58220, Stop: 57897, Start Num: 18
Candidate Starts for MorillMayhem_94:
(Start: 18 @58220 has 46 MA's), (20, 58160), (23, 58118), (27, 58028),

Gene: Namago_97 Start: 58147, Stop: 57824, Start Num: 18
Candidate Starts for Namago_97:
(Start: 18 @58147 has 46 MA's), (23, 58051), (24, 58027), (30, 57883),

Gene: Nike_93 Start: 58369, Stop: 58043, Start Num: 18
Candidate Starts for Nike_93:
(7, 58570), (12, 58516), (Start: 18 @58369 has 46 MA's), (22, 58300), (30, 58102),

Gene: OneinaGillian_98 Start: 59292, Stop: 58975, Start Num: 18
Candidate Starts for OneinaGillian_98:
(Start: 18 @59292 has 46 MA's), (20, 59232), (23, 59190),

Gene: Pepe25_97 Start: 58582, Stop: 58262, Start Num: 18
Candidate Starts for Pepe25_97:
(Start: 18 @58582 has 46 MA's), (20, 58522), (23, 58480),

Gene: Phabia_95 Start: 57997, Stop: 57674, Start Num: 18
Candidate Starts for Phabia_95:
(6, 58192), (Start: 18 @57997 has 46 MA's), (23, 57901), (24, 57877), (30, 57733),

Gene: Phinky_100 Start: 59739, Stop: 59419, Start Num: 18
Candidate Starts for Phinky_100:
(Start: 18 @59739 has 46 MA's), (20, 59679), (23, 59637),

Gene: Quammi_95 Start: 57942, Stop: 57619, Start Num: 18
Candidate Starts for Quammi_95:
(Start: 18 @57942 has 46 MA's), (23, 57846), (24, 57822), (30, 57678),

Gene: RobinRose_103 Start: 60420, Stop: 60103, Start Num: 18
Candidate Starts for RobinRose_103:
(Start: 18 @60420 has 46 MA's), (20, 60360), (23, 60318),

Gene: Romm_103 Start: 60417, Stop: 60100, Start Num: 18
Candidate Starts for Romm_103:
(Start: 18 @60417 has 46 MA's), (20, 60357), (23, 60315),

Gene: Rowlf_92 Start: 57836, Stop: 57492, Start Num: 17
Candidate Starts for Rowlf_92:
(16, 57851), (Start: 17 @57836 has 2 MA's), (21, 57749), (23, 57710), (26, 57665), (29, 57563),

Gene: RubyRalph_95 Start: 59140, Stop: 58796, Start Num: 18
Candidate Starts for RubyRalph_95:
(Start: 18 @59140 has 46 MA's), (19, 59092), (20, 59080), (25, 59005), (29, 58882), (31, 58861),

Gene: Rudy_93 Start: 57808, Stop: 57485, Start Num: 18

Candidate Starts for Rudy_93:

(Start: 18 @57808 has 46 MA's), (23, 57712), (24, 57688), (30, 57544),

Gene: SadLad_96 Start: 60059, Stop: 59715, Start Num: 18

Candidate Starts for SadLad_96:

(Start: 18 @60059 has 46 MA's), (19, 60011), (20, 59999), (25, 59924), (29, 59801), (31, 59780),

Gene: SallyK_97 Start: 58963, Stop: 58640, Start Num: 18

Candidate Starts for SallyK_97:

(Start: 18 @58963 has 46 MA's), (23, 58867), (24, 58843), (30, 58699),

Gene: Sillytadpoles_96 Start: 57648, Stop: 57325, Start Num: 18

Candidate Starts for Sillytadpoles_96:

(Start: 18 @57648 has 46 MA's), (23, 57552), (24, 57528), (30, 57384),

Gene: SlySloth_97 Start: 57790, Stop: 57446, Start Num: 17

Candidate Starts for SlySloth_97:

(16, 57805), (Start: 17 @57790 has 2 MA's), (21, 57703), (23, 57664), (26, 57619), (29, 57517),

Gene: Squash_97 Start: 58351, Stop: 58025, Start Num: 18

Candidate Starts for Squash_97:

(7, 58552), (13, 58498), (Start: 18 @58351 has 46 MA's), (20, 58291), (23, 58249), (27, 58159),

Gene: Statler_98 Start: 58394, Stop: 58002, Start Num: 18

Candidate Starts for Statler_98:

(1, 58739), (2, 58730), (3, 58688), (5, 58595), (8, 58577), (9, 58562), (10, 58550), (11, 58547), (14, 58535), (Start: 18 @58394 has 46 MA's), (19, 58346), (23, 58289), (25, 58259), (30, 58121), (32, 58094), (33, 58073),

Gene: StrawberryJamm_101 Start: 57923, Stop: 57540, Start Num: 18

Candidate Starts for StrawberryJamm_101:

(Start: 18 @57923 has 46 MA's), (19, 57875), (23, 57827), (24, 57803), (30, 57659), (32, 57632), (33, 57611),

Gene: Teehee_96 Start: 58596, Stop: 58273, Start Num: 18

Candidate Starts for Teehee_96:

(Start: 18 @58596 has 46 MA's), (23, 58500), (24, 58476), (30, 58332),

Gene: Tempo_102 Start: 60454, Stop: 60137, Start Num: 18

Candidate Starts for Tempo_102:

(Start: 18 @60454 has 46 MA's), (20, 60394), (23, 60352),

Gene: Tissue_97 Start: 58587, Stop: 58204, Start Num: 18

Candidate Starts for Tissue_97:

(Start: 18 @58587 has 46 MA's), (23, 58491), (24, 58467), (30, 58323), (32, 58296), (33, 58275),

Gene: Viceroy_94 Start: 57763, Stop: 57440, Start Num: 18

Candidate Starts for Viceroy_94:

(Start: 18 @57763 has 46 MA's), (23, 57667), (24, 57643), (30, 57499),

Gene: Wayne3_97 Start: 58566, Stop: 58243, Start Num: 18

Candidate Starts for Wayne3_97:

(6, 58761), (Start: 18 @58566 has 46 MA's), (23, 58470), (24, 58446), (30, 58302),

Gene: WheelerS25_99 Start: 58674, Stop: 58282, Start Num: 18

Candidate Starts for WheelerS25_99:

(Start: 18 @58674 has 46 MA's), (19, 58626), (23, 58569), (25, 58539), (30, 58401), (32, 58374), (33, 58353),

Gene: Wheelie_95 Start: 57887, Stop: 57564, Start Num: 18

Candidate Starts for Wheelie_95:

(6, 58082), (Start: 18 @57887 has 46 MA's), (23, 57791), (24, 57767), (30, 57623),

Gene: Wilca_99 Start: 59663, Stop: 59343, Start Num: 18

Candidate Starts for Wilca_99:

(Start: 18 @59663 has 46 MA's), (20, 59603), (23, 59561),

Gene: Zagie_97 Start: 58408, Stop: 58085, Start Num: 18

Candidate Starts for Zagie_97:

(Start: 18 @58408 has 46 MA's), (23, 58312), (24, 58288), (30, 58144),

Gene: Zhafia_98 Start: 58442, Stop: 58119, Start Num: 18

Candidate Starts for Zhafia_98:

(Start: 18 @58442 has 46 MA's), (23, 58346), (24, 58322), (30, 58178),