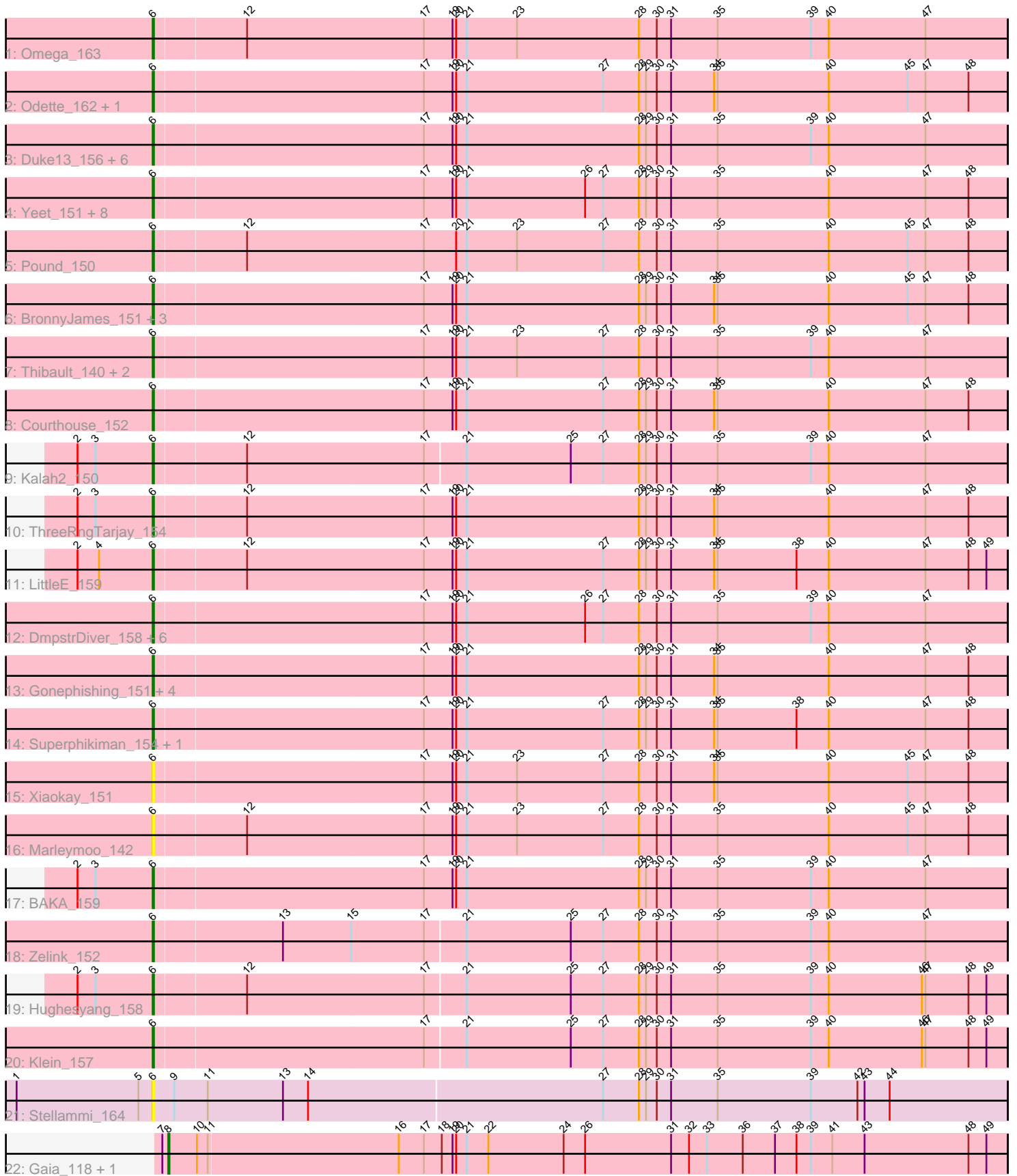


Pham 294792



Note: Tracks are now grouped by subcluster and scaled. Switching in subcluster is indicated by changes in track color. Track scale is now set by default to display the region 30 bp upstream of start 1 to 30 bp downstream of the last possible start. If this default region is judged to be packed too tightly with annotated starts, the track will be further scaled to only show that region of the ORF with annotated starts. This action will be indicated by adding "Zoomed" to the title. For starts, yellow indicates the location of called starts comprised solely of Glimmer/GeneMark auto-annotations, green indicates the location of called starts with at least 1 manual gene annotation.

Pham 294792 Report

This analysis was run 04/18/26 on database version 643.

Pham number 294792 has 54 members, 12 are drafts.

Phages represented in each track:

- Track 1 : Omega_163
- Track 2 : Odette_162, Schatzie_153
- Track 3 : Duke13_156, EricMillard_152, Optimus_150, Bagrid_162, Lucky2013_149, MiaZeal_156, Porcelain_153
- Track 4 : Yeet_151, HokkenD_153, Dove_145, Phoebus_159, Redno2_152, Bombitas_145, Hidrated_146, JuicyJay_153, NihilNomen_160
- Track 5 : Pound_150
- Track 6 : BronnyJames_151, Nibley_150, Shaboozey_154, KashFlow_156
- Track 7 : Thibault_140, Bobby_148, Constella_150
- Track 8 : Courthouse_152
- Track 9 : Kalah2_150
- Track 10 : ThreeRngTarjay_154
- Track 11 : LittleE_159
- Track 12 : DmpstrDiver_158, Halley_159, Wanda_157, Dallas_158, Beem_159, Ejimix_150, Minerva_157
- Track 13 : Gonephishing_151, Hannaconda_151, Rearden_151, Nekros_155, Squint_149
- Track 14 : Superphikiman_154, Ariel_156
- Track 15 : Xiaokay_151
- Track 16 : Marleymoo_142
- Track 17 : BAKA_159
- Track 18 : Zelink_152
- Track 19 : Hughesyang_158
- Track 20 : Klein_157
- Track 21 : Stellammi_164
- Track 22 : Gaia_118, Nebkiss_119

Summary of Final Annotations (See graph section above for start numbers):

The start number called the most often in the published annotations is 6, it was called in 40 of the 42 non-draft genes in the pham.

Genes that call this "Most Annotated" start:

- Ariel_156, BAKA_159, Bagrid_162, Beem_159, Bobby_148, Bombitas_145, BronnyJames_151, Constella_150, Courthouse_152, Dallas_158, DmpstrDiver_158, Dove_145, Duke13_156, Ejimix_150, EricMillard_152, Gonephishing_151, Halley_159, Hannaconda_151, Hidrated_146, HokkenD_153, Hughesyang_158, JuicyJay_153, Kalah2_150, KashFlow_156, Klein_157, LittleE_159, Lucky2013_149, Marleymoo_142, MiaZeal_156, Minerva_157, Nekros_155, Nibley_150, NihilNomen_160, Odette_162, Omega_163, Optimus_150, Phoebus_159, Porcelain_153, Pound_150, Rearden_151, Redno2_152, Schatzie_153, Shaboozey_154, Squint_149, Stellammi_164, Superphikiman_154, Thibault_140, ThreeRngTarjay_154, Wanda_157, Xiaokay_151, Yeet_151, Zelink_152,

Genes that have the "Most Annotated" start but do not call it:

-

Genes that do not have the "Most Annotated" start:

- Gaia_118, Nebkiss_119,

Summary by start number:

Start 6:

- Found in 52 of 54 (96.3%) of genes in pham
- Manual Annotations of this start: 40 of 42
- Called 100.0% of time when present
- Phage (with cluster) where this start called: Ariel_156 (J), BAKA_159 (J), Bagrid_162 (J), Beem_159 (J), Bobby_148 (J), Bombitas_145 (J), BronnyJames_151 (J), Constella_150 (J), Courthouse_152 (J), Dallas_158 (J), DmpstrDiver_158 (J), Dove_145 (J), Duke13_156 (J), Ejimix_150 (J), EricMillard_152 (J), Gonephishing_151 (J), Halley_159 (J), Hannaconda_151 (J), Hidrated_146 (J), HokkenD_153 (J), Hughesyang_158 (J), JuicyJay_153 (J), Kalah2_150 (J), KashFlow_156 (J), Klein_157 (J), LittleE_159 (J), Lucky2013_149 (J), Marleymoo_142 (J), MiaZeal_156 (J), Minerva_157 (J), Nekros_155 (J), Nibley_150 (J), NihilNomen_160 (J), Odette_162 (J), Omega_163 (J), Optimus_150 (J), Phoebus_159 (J), Porcelain_153 (J), Pound_150 (J), Rearden_151 (J), Redno2_152 (J), Schatzie_153 (J), Shaboozey_154 (J), Squint_149 (J), Stellammi_164 (UNK), Superphikiman_154 (J), Thibault_140 (J), ThreeRngTarjay_154 (J), Wanda_157 (J), Xiaokay_151 (J), Yeet_151 (J), Zelink_152 (J),

Start 8:

- Found in 2 of 54 (3.7%) of genes in pham
- Manual Annotations of this start: 2 of 42
- Called 100.0% of time when present
- Phage (with cluster) where this start called: Gaia_118 (X), Nebkiss_119 (X),

Summary by clusters:

There are 3 clusters represented in this pham: X, UNK, J,

Info for manual annotations of cluster J:

- Start number 6 was manually annotated 40 times for cluster J.

Info for manual annotations of cluster X:

- Start number 8 was manually annotated 2 times for cluster X.

Gene Information:

Gene: Ariel_156 Start: 80329, Stop: 81039, Start Num: 6

Candidate Starts for Ariel_156:

(Start: 6 @80329 has 40 MA's), (17, 80551), (19, 80575), (20, 80578), (21, 80587), (27, 80701), (28, 80731), (29, 80737), (30, 80746), (31, 80758), (34, 80794), (35, 80797), (38, 80863), (40, 80890), (47, 80971), (48, 81007),

Gene: BAKA_159 Start: 84277, Stop: 84987, Start Num: 6

Candidate Starts for BAKA_159:

(2, 84214), (3, 84229), (Start: 6 @84277 has 40 MA's), (17, 84499), (19, 84523), (20, 84526), (21, 84535), (28, 84679), (29, 84685), (30, 84694), (31, 84706), (35, 84745), (39, 84823), (40, 84838), (47, 84919),

Gene: Bagrid_162 Start: 85506, Stop: 86216, Start Num: 6

Candidate Starts for Bagrid_162:

(Start: 6 @85506 has 40 MA's), (17, 85728), (19, 85752), (20, 85755), (21, 85764), (28, 85908), (29, 85914), (30, 85923), (31, 85935), (35, 85974), (39, 86052), (40, 86067), (47, 86148),

Gene: Beem_159 Start: 85469, Stop: 86179, Start Num: 6

Candidate Starts for Beem_159:

(Start: 6 @85469 has 40 MA's), (17, 85691), (19, 85715), (20, 85718), (21, 85727), (26, 85826), (27, 85841), (28, 85871), (30, 85886), (31, 85898), (35, 85937), (39, 86015), (40, 86030), (47, 86111),

Gene: Bobby_148 Start: 85819, Stop: 86529, Start Num: 6

Candidate Starts for Bobby_148:

(Start: 6 @85819 has 40 MA's), (17, 86041), (19, 86065), (20, 86068), (21, 86077), (23, 86119), (27, 86191), (28, 86221), (30, 86236), (31, 86248), (35, 86287), (39, 86365), (40, 86380), (47, 86461),

Gene: Bombitas_145 Start: 81475, Stop: 82185, Start Num: 6

Candidate Starts for Bombitas_145:

(Start: 6 @81475 has 40 MA's), (17, 81697), (19, 81721), (20, 81724), (21, 81733), (26, 81832), (27, 81847), (28, 81877), (29, 81883), (30, 81892), (31, 81904), (35, 81943), (40, 82036), (47, 82117), (48, 82153),

Gene: BronnyJames_151 Start: 80590, Stop: 81300, Start Num: 6

Candidate Starts for BronnyJames_151:

(Start: 6 @80590 has 40 MA's), (17, 80812), (19, 80836), (20, 80839), (21, 80848), (28, 80992), (29, 80998), (30, 81007), (31, 81019), (34, 81055), (35, 81058), (40, 81151), (45, 81217), (47, 81232), (48, 81268),

Gene: Constella_150 Start: 82508, Stop: 83218, Start Num: 6

Candidate Starts for Constella_150:

(Start: 6 @82508 has 40 MA's), (17, 82730), (19, 82754), (20, 82757), (21, 82766), (23, 82808), (27, 82880), (28, 82910), (30, 82925), (31, 82937), (35, 82976), (39, 83054), (40, 83069), (47, 83150),

Gene: Courthouse_152 Start: 80187, Stop: 80897, Start Num: 6

Candidate Starts for Courthouse_152:

(Start: 6 @80187 has 40 MA's), (17, 80409), (19, 80433), (20, 80436), (21, 80445), (27, 80559), (28, 80589), (29, 80595), (30, 80604), (31, 80616), (34, 80652), (35, 80655), (40, 80748), (47, 80829), (48,

80865),

Gene: Dallas_158 Start: 84692, Stop: 85402, Start Num: 6

Candidate Starts for Dallas_158:

(Start: 6 @84692 has 40 MA's), (17, 84914), (19, 84938), (20, 84941), (21, 84950), (26, 85049), (27, 85064), (28, 85094), (30, 85109), (31, 85121), (35, 85160), (39, 85238), (40, 85253), (47, 85334),

Gene: DmpstrDiver_158 Start: 83419, Stop: 84129, Start Num: 6

Candidate Starts for DmpstrDiver_158:

(Start: 6 @83419 has 40 MA's), (17, 83641), (19, 83665), (20, 83668), (21, 83677), (26, 83776), (27, 83791), (28, 83821), (30, 83836), (31, 83848), (35, 83887), (39, 83965), (40, 83980), (47, 84061),

Gene: Dove_145 Start: 79831, Stop: 80541, Start Num: 6

Candidate Starts for Dove_145:

(Start: 6 @79831 has 40 MA's), (17, 80053), (19, 80077), (20, 80080), (21, 80089), (26, 80188), (27, 80203), (28, 80233), (29, 80239), (30, 80248), (31, 80260), (35, 80299), (40, 80392), (47, 80473), (48, 80509),

Gene: Duke13_156 Start: 82773, Stop: 83483, Start Num: 6

Candidate Starts for Duke13_156:

(Start: 6 @82773 has 40 MA's), (17, 82995), (19, 83019), (20, 83022), (21, 83031), (28, 83175), (29, 83181), (30, 83190), (31, 83202), (35, 83241), (39, 83319), (40, 83334), (47, 83415),

Gene: Ejimix_150 Start: 83680, Stop: 84390, Start Num: 6

Candidate Starts for Ejimix_150:

(Start: 6 @83680 has 40 MA's), (17, 83902), (19, 83926), (20, 83929), (21, 83938), (26, 84037), (27, 84052), (28, 84082), (30, 84097), (31, 84109), (35, 84148), (39, 84226), (40, 84241), (47, 84322),

Gene: EricMillard_152 Start: 84116, Stop: 84826, Start Num: 6

Candidate Starts for EricMillard_152:

(Start: 6 @84116 has 40 MA's), (17, 84338), (19, 84362), (20, 84365), (21, 84374), (28, 84518), (29, 84524), (30, 84533), (31, 84545), (35, 84584), (39, 84662), (40, 84677), (47, 84758),

Gene: Gaia_118 Start: 66289, Stop: 66987, Start Num: 8

Candidate Starts for Gaia_118:

(7, 66286), (Start: 8 @66289 has 2 MA's), (10, 66313), (11, 66322), (16, 66478), (17, 66499), (18, 66514), (19, 66523), (20, 66526), (21, 66535), (22, 66553), (24, 66616), (26, 66634), (31, 66706), (32, 66721), (33, 66736), (36, 66766), (37, 66793), (38, 66811), (39, 66823), (41, 66841), (43, 66868), (48, 66955), (49, 66970),

Gene: Gonephishing_151 Start: 82284, Stop: 82994, Start Num: 6

Candidate Starts for Gonephishing_151:

(Start: 6 @82284 has 40 MA's), (17, 82506), (19, 82530), (20, 82533), (21, 82542), (28, 82686), (29, 82692), (30, 82701), (31, 82713), (34, 82749), (35, 82752), (40, 82845), (47, 82926), (48, 82962),

Gene: Halley_159 Start: 83996, Stop: 84706, Start Num: 6

Candidate Starts for Halley_159:

(Start: 6 @83996 has 40 MA's), (17, 84218), (19, 84242), (20, 84245), (21, 84254), (26, 84353), (27, 84368), (28, 84398), (30, 84413), (31, 84425), (35, 84464), (39, 84542), (40, 84557), (47, 84638),

Gene: Hannaconda_151 Start: 84288, Stop: 84998, Start Num: 6

Candidate Starts for Hannaconda_151:

(Start: 6 @84288 has 40 MA's), (17, 84510), (19, 84534), (20, 84537), (21, 84546), (28, 84690), (29, 84696), (30, 84705), (31, 84717), (34, 84753), (35, 84756), (40, 84849), (47, 84930), (48, 84966),

Gene: Hidrated_146 Start: 83298, Stop: 84008, Start Num: 6

Candidate Starts for Hidrated_146:

(Start: 6 @83298 has 40 MA's), (17, 83520), (19, 83544), (20, 83547), (21, 83556), (26, 83655), (27, 83670), (28, 83700), (29, 83706), (30, 83715), (31, 83727), (35, 83766), (40, 83859), (47, 83940), (48, 83976),

Gene: HokkenD_153 Start: 85553, Stop: 86263, Start Num: 6

Candidate Starts for HokkenD_153:

(Start: 6 @85553 has 40 MA's), (17, 85775), (19, 85799), (20, 85802), (21, 85811), (26, 85910), (27, 85925), (28, 85955), (29, 85961), (30, 85970), (31, 85982), (35, 86021), (40, 86114), (47, 86195), (48, 86231),

Gene: Hughesyang_158 Start: 84577, Stop: 85284, Start Num: 6

Candidate Starts for Hughesyang_158:

(2, 84514), (3, 84529), (Start: 6 @84577 has 40 MA's), (12, 84652), (17, 84799), (21, 84832), (25, 84919), (27, 84946), (28, 84976), (29, 84982), (30, 84991), (31, 85003), (35, 85042), (39, 85120), (40, 85135), (46, 85213), (47, 85216), (48, 85252), (49, 85267),

Gene: JuicyJay_153 Start: 85200, Stop: 85910, Start Num: 6

Candidate Starts for JuicyJay_153:

(Start: 6 @85200 has 40 MA's), (17, 85422), (19, 85446), (20, 85449), (21, 85458), (26, 85557), (27, 85572), (28, 85602), (29, 85608), (30, 85617), (31, 85629), (35, 85668), (40, 85761), (47, 85842), (48, 85878),

Gene: Kalah2_150 Start: 83707, Stop: 84414, Start Num: 6

Candidate Starts for Kalah2_150:

(2, 83644), (3, 83659), (Start: 6 @83707 has 40 MA's), (12, 83782), (17, 83929), (21, 83962), (25, 84049), (27, 84076), (28, 84106), (29, 84112), (30, 84121), (31, 84133), (35, 84172), (39, 84250), (40, 84265), (47, 84346),

Gene: KashFlow_156 Start: 84101, Stop: 84811, Start Num: 6

Candidate Starts for KashFlow_156:

(Start: 6 @84101 has 40 MA's), (17, 84323), (19, 84347), (20, 84350), (21, 84359), (28, 84503), (29, 84509), (30, 84518), (31, 84530), (34, 84566), (35, 84569), (40, 84662), (45, 84728), (47, 84743), (48, 84779),

Gene: Klein_157 Start: 82067, Stop: 82774, Start Num: 6

Candidate Starts for Klein_157:

(Start: 6 @82067 has 40 MA's), (17, 82289), (21, 82322), (25, 82409), (27, 82436), (28, 82466), (29, 82472), (30, 82481), (31, 82493), (35, 82532), (39, 82610), (40, 82625), (46, 82703), (47, 82706), (48, 82742), (49, 82757),

Gene: LittleE_159 Start: 83924, Stop: 84634, Start Num: 6

Candidate Starts for LittleE_159:

(2, 83861), (4, 83879), (Start: 6 @83924 has 40 MA's), (12, 83999), (17, 84146), (19, 84170), (20, 84173), (21, 84182), (27, 84296), (28, 84326), (29, 84332), (30, 84341), (31, 84353), (34, 84389), (35, 84392), (38, 84458), (40, 84485), (47, 84566), (48, 84602), (49, 84617),

Gene: Lucky2013_149 Start: 79061, Stop: 79771, Start Num: 6

Candidate Starts for Lucky2013_149:

(Start: 6 @79061 has 40 MA's), (17, 79283), (19, 79307), (20, 79310), (21, 79319), (28, 79463), (29, 79469), (30, 79478), (31, 79490), (35, 79529), (39, 79607), (40, 79622), (47, 79703),

Gene: Marleymoo_142 Start: 81207, Stop: 81917, Start Num: 6
Candidate Starts for Marleymoo_142:

(Start: 6 @81207 has 40 MA's), (12, 81282), (17, 81429), (19, 81453), (20, 81456), (21, 81465), (23, 81507), (27, 81579), (28, 81609), (30, 81624), (31, 81636), (35, 81675), (40, 81768), (45, 81834), (47, 81849), (48, 81885),

Gene: MiaZeal_156 Start: 80208, Stop: 80918, Start Num: 6
Candidate Starts for MiaZeal_156:

(Start: 6 @80208 has 40 MA's), (17, 80430), (19, 80454), (20, 80457), (21, 80466), (28, 80610), (29, 80616), (30, 80625), (31, 80637), (35, 80676), (39, 80754), (40, 80769), (47, 80850),

Gene: Minerva_157 Start: 83303, Stop: 84013, Start Num: 6
Candidate Starts for Minerva_157:

(Start: 6 @83303 has 40 MA's), (17, 83525), (19, 83549), (20, 83552), (21, 83561), (26, 83660), (27, 83675), (28, 83705), (30, 83720), (31, 83732), (35, 83771), (39, 83849), (40, 83864), (47, 83945),

Gene: Nebkiss_119 Start: 65215, Stop: 65913, Start Num: 8
Candidate Starts for Nebkiss_119:

(7, 65212), (Start: 8 @65215 has 2 MA's), (10, 65239), (11, 65248), (16, 65404), (17, 65425), (18, 65440), (19, 65449), (20, 65452), (21, 65461), (22, 65479), (24, 65542), (26, 65560), (31, 65632), (32, 65647), (33, 65662), (36, 65692), (37, 65719), (38, 65737), (39, 65749), (41, 65767), (43, 65794), (48, 65881), (49, 65896),

Gene: Nekros_155 Start: 83601, Stop: 84311, Start Num: 6
Candidate Starts for Nekros_155:

(Start: 6 @83601 has 40 MA's), (17, 83823), (19, 83847), (20, 83850), (21, 83859), (28, 84003), (29, 84009), (30, 84018), (31, 84030), (34, 84066), (35, 84069), (40, 84162), (47, 84243), (48, 84279),

Gene: Nibley_150 Start: 80167, Stop: 80877, Start Num: 6
Candidate Starts for Nibley_150:

(Start: 6 @80167 has 40 MA's), (17, 80389), (19, 80413), (20, 80416), (21, 80425), (28, 80569), (29, 80575), (30, 80584), (31, 80596), (34, 80632), (35, 80635), (40, 80728), (45, 80794), (47, 80809), (48, 80845),

Gene: NihilNomen_160 Start: 83326, Stop: 84036, Start Num: 6
Candidate Starts for NihilNomen_160:

(Start: 6 @83326 has 40 MA's), (17, 83548), (19, 83572), (20, 83575), (21, 83584), (26, 83683), (27, 83698), (28, 83728), (29, 83734), (30, 83743), (31, 83755), (35, 83794), (40, 83887), (47, 83968), (48, 84004),

Gene: Odette_162 Start: 85622, Stop: 86332, Start Num: 6
Candidate Starts for Odette_162:

(Start: 6 @85622 has 40 MA's), (17, 85844), (19, 85868), (20, 85871), (21, 85880), (27, 85994), (28, 86024), (29, 86030), (30, 86039), (31, 86051), (34, 86087), (35, 86090), (40, 86183), (45, 86249), (47, 86264), (48, 86300),

Gene: Omega_163 Start: 85097, Stop: 85807, Start Num: 6
Candidate Starts for Omega_163:

(Start: 6 @85097 has 40 MA's), (12, 85172), (17, 85319), (19, 85343), (20, 85346), (21, 85355), (23, 85397), (28, 85499), (30, 85514), (31, 85526), (35, 85565), (39, 85643), (40, 85658), (47, 85739),

Gene: Optimus_150 Start: 82593, Stop: 83303, Start Num: 6

Candidate Starts for Optimus_150:

(Start: 6 @82593 has 40 MA's), (17, 82815), (19, 82839), (20, 82842), (21, 82851), (28, 82995), (29, 83001), (30, 83010), (31, 83022), (35, 83061), (39, 83139), (40, 83154), (47, 83235),

Gene: Phoebus_159 Start: 87013, Stop: 87723, Start Num: 6

Candidate Starts for Phoebus_159:

(Start: 6 @87013 has 40 MA's), (17, 87235), (19, 87259), (20, 87262), (21, 87271), (26, 87370), (27, 87385), (28, 87415), (29, 87421), (30, 87430), (31, 87442), (35, 87481), (40, 87574), (47, 87655), (48, 87691),

Gene: Porcelain_153 Start: 80007, Stop: 80717, Start Num: 6

Candidate Starts for Porcelain_153:

(Start: 6 @80007 has 40 MA's), (17, 80229), (19, 80253), (20, 80256), (21, 80265), (28, 80409), (29, 80415), (30, 80424), (31, 80436), (35, 80475), (39, 80553), (40, 80568), (47, 80649),

Gene: Pound_150 Start: 82016, Stop: 82726, Start Num: 6

Candidate Starts for Pound_150:

(Start: 6 @82016 has 40 MA's), (12, 82091), (17, 82238), (20, 82265), (21, 82274), (23, 82316), (27, 82388), (28, 82418), (30, 82433), (31, 82445), (35, 82484), (40, 82577), (45, 82643), (47, 82658), (48, 82694),

Gene: Rearden_151 Start: 80837, Stop: 81547, Start Num: 6

Candidate Starts for Rearden_151:

(Start: 6 @80837 has 40 MA's), (17, 81059), (19, 81083), (20, 81086), (21, 81095), (28, 81239), (29, 81245), (30, 81254), (31, 81266), (34, 81302), (35, 81305), (40, 81398), (47, 81479), (48, 81515),

Gene: Redno2_152 Start: 81126, Stop: 81836, Start Num: 6

Candidate Starts for Redno2_152:

(Start: 6 @81126 has 40 MA's), (17, 81348), (19, 81372), (20, 81375), (21, 81384), (26, 81483), (27, 81498), (28, 81528), (29, 81534), (30, 81543), (31, 81555), (35, 81594), (40, 81687), (47, 81768), (48, 81804),

Gene: Schatzie_153 Start: 83676, Stop: 84386, Start Num: 6

Candidate Starts for Schatzie_153:

(Start: 6 @83676 has 40 MA's), (17, 83898), (19, 83922), (20, 83925), (21, 83934), (27, 84048), (28, 84078), (29, 84084), (30, 84093), (31, 84105), (34, 84141), (35, 84144), (40, 84237), (45, 84303), (47, 84318), (48, 84354),

Gene: Shaboozey_154 Start: 80611, Stop: 81321, Start Num: 6

Candidate Starts for Shaboozey_154:

(Start: 6 @80611 has 40 MA's), (17, 80833), (19, 80857), (20, 80860), (21, 80869), (28, 81013), (29, 81019), (30, 81028), (31, 81040), (34, 81076), (35, 81079), (40, 81172), (45, 81238), (47, 81253), (48, 81289),

Gene: Squint_149 Start: 79996, Stop: 80706, Start Num: 6

Candidate Starts for Squint_149:

(Start: 6 @79996 has 40 MA's), (17, 80218), (19, 80242), (20, 80245), (21, 80254), (28, 80398), (29, 80404), (30, 80413), (31, 80425), (34, 80461), (35, 80464), (40, 80557), (47, 80638), (48, 80674),

Gene: Stellammi_164 Start: 70885, Stop: 71595, Start Num: 6

Candidate Starts for Stellammi_164:

(1, 70771), (5, 70873), (Start: 6 @70885 has 40 MA's), (9, 70903), (11, 70930), (13, 70993), (14, 71014), (27, 71257), (28, 71287), (29, 71293), (30, 71302), (31, 71314), (35, 71353), (39, 71431), (42, 71470), (43, 71476), (44, 71497),

Gene: Superphikiman_154 Start: 80469, Stop: 81179, Start Num: 6

Candidate Starts for Superphikiman_154:

(Start: 6 @80469 has 40 MA's), (17, 80691), (19, 80715), (20, 80718), (21, 80727), (27, 80841), (28, 80871), (29, 80877), (30, 80886), (31, 80898), (34, 80934), (35, 80937), (38, 81003), (40, 81030), (47, 81111), (48, 81147),

Gene: Thibault_140 Start: 80399, Stop: 81109, Start Num: 6

Candidate Starts for Thibault_140:

(Start: 6 @80399 has 40 MA's), (17, 80621), (19, 80645), (20, 80648), (21, 80657), (23, 80699), (27, 80771), (28, 80801), (30, 80816), (31, 80828), (35, 80867), (39, 80945), (40, 80960), (47, 81041),

Gene: ThreeRngTarjay_154 Start: 84534, Stop: 85244, Start Num: 6

Candidate Starts for ThreeRngTarjay_154:

(2, 84471), (3, 84486), (Start: 6 @84534 has 40 MA's), (12, 84609), (17, 84756), (19, 84780), (20, 84783), (21, 84792), (28, 84936), (29, 84942), (30, 84951), (31, 84963), (34, 84999), (35, 85002), (40, 85095), (47, 85176), (48, 85212),

Gene: Wanda_157 Start: 81775, Stop: 82485, Start Num: 6

Candidate Starts for Wanda_157:

(Start: 6 @81775 has 40 MA's), (17, 81997), (19, 82021), (20, 82024), (21, 82033), (26, 82132), (27, 82147), (28, 82177), (30, 82192), (31, 82204), (35, 82243), (39, 82321), (40, 82336), (47, 82417),

Gene: Xiaokay_151 Start: 83339, Stop: 84049, Start Num: 6

Candidate Starts for Xiaokay_151:

(Start: 6 @83339 has 40 MA's), (17, 83561), (19, 83585), (20, 83588), (21, 83597), (23, 83639), (27, 83711), (28, 83741), (30, 83756), (31, 83768), (34, 83804), (35, 83807), (40, 83900), (45, 83966), (47, 83981), (48, 84017),

Gene: Yeet_151 Start: 83070, Stop: 83780, Start Num: 6

Candidate Starts for Yeet_151:

(Start: 6 @83070 has 40 MA's), (17, 83292), (19, 83316), (20, 83319), (21, 83328), (26, 83427), (27, 83442), (28, 83472), (29, 83478), (30, 83487), (31, 83499), (35, 83538), (40, 83631), (47, 83712), (48, 83748),

Gene: Zelink_152 Start: 83501, Stop: 84208, Start Num: 6

Candidate Starts for Zelink_152:

(Start: 6 @83501 has 40 MA's), (13, 83606), (15, 83663), (17, 83723), (21, 83756), (25, 83843), (27, 83870), (28, 83900), (30, 83915), (31, 83927), (35, 83966), (39, 84044), (40, 84059), (47, 84140),