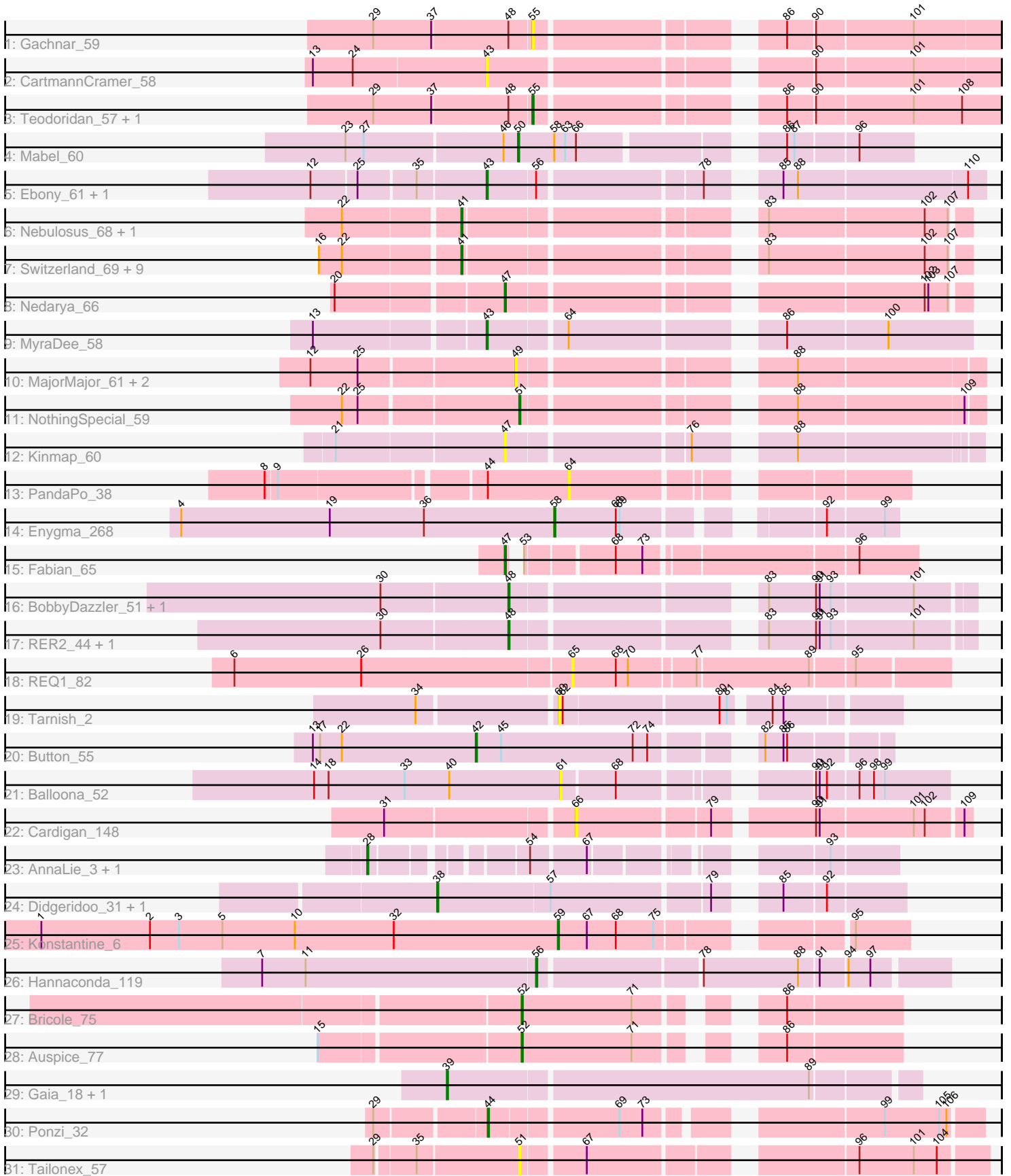


Pham 294822



Note: Tracks are now grouped by subcluster and scaled. Switching in subcluster is indicated by changes in track color. Track scale is now set by default to display the region 30 bp upstream of start 1 to 30 bp downstream of the last possible start. If this default region is judged to be packed too tightly with annotated starts, the track will be further scaled to only show that region of the ORF with annotated starts. This action will be indicated by adding "Zoomed" to the title. For starts, yellow indicates the location of called starts comprised solely of Glimmer/GeneMark auto-annotations, green indicates the location of called starts with at least 1 manual gene annotation.

Pham 294822 Report

This analysis was run 04/18/26 on database version 643.

Pham number 294822 has 50 members, 14 are drafts.

Phages represented in each track:

- Track 1 : Gachnar_59
- Track 2 : CartmannCramer_58
- Track 3 : Teodoridan_57, IgnatiusPatJac_59
- Track 4 : Mabel_60
- Track 5 : Ebony_61, Salz_60
- Track 6 : Nebulosus_68, Epsocamisio_67
- Track 7 : Switzerland_69, Battleship_72, MinecraftSteve_70, ShayRa_70, Anaysia_70, LastResort_68, JSwag_69, Strosahl_70, Remus_70, ReMo_68
- Track 8 : Nedarya_66
- Track 9 : MyraDee_58
- Track 10 : MajorMajor_61, Bradman_61, Quokka_60
- Track 11 : NothingSpecial_59
- Track 12 : Kinmap_60
- Track 13 : PandaPo_38
- Track 14 : Enygma_268
- Track 15 : Fabian_65
- Track 16 : BobbyDazzler_51, Yoncess_50
- Track 17 : RER2_44, Krishelle_51
- Track 18 : REQ1_82
- Track 19 : Tarnish_2
- Track 20 : Button_55
- Track 21 : Balloona_52
- Track 22 : Cardigan_148
- Track 23 : AnnaLie_3, BelmontSKP_3
- Track 24 : Didgeridoo_31, Finalfrontier_30
- Track 25 : Konstantine_6
- Track 26 : Hannaconda_119
- Track 27 : Bricole_75
- Track 28 : Auspice_77
- Track 29 : Gaia_18, Nebkiss_19
- Track 30 : Ponzi_32
- Track 31 : Tailonex_57

Summary of Final Annotations (See graph section above for start numbers):

The start number called the most often in the published annotations is 41, it was called in 12 of the 36 non-draft genes in the pham.

Genes that call this "Most Annotated" start:

- Anaysia_70, Battleship_72, Epsocamisio_67, JSwag_69, LastResort_68, MinecraftSteve_70, Nebulosus_68, ReMo_68, Remus_70, ShayRa_70, Strosahl_70, Switzerland_69,

Genes that have the "Most Annotated" start but do not call it:

-

Genes that do not have the "Most Annotated" start:

- AnnaLie_3, Auspice_77, Balloona_52, BelmontSKP_3, BobbyDazzler_51, Bradman_61, Bricole_75, Button_55, Cardigan_148, CartmannCramer_58, Didgeridoo_31, Ebony_61, Enygma_268, Fabian_65, Finalfrontier_30, Gachnar_59, Gaia_18, Hannaconda_119, IgnatiusPatJac_59, Kinmap_60, Konstantine_6, Krishelle_51, Mabel_60, MajorMajor_61, MyraDee_58, Nebkiss_19, Nedarya_66, NothingSpecial_59, PandaPo_38, Ponzi_32, Quokka_60, REQ1_82, RER2_44, Salz_60, Tailonex_57, Tarnish_2, Teodoridan_57, Yoncess_50,

Summary by start number:

Start 28:

- Found in 2 of 50 (4.0%) of genes in pham
- Manual Annotations of this start: 2 of 36
- Called 100.0% of time when present
- Phage (with cluster) where this start called: AnnaLie_3 (EB), BelmontSKP_3 (EB),

Start 38:

- Found in 2 of 50 (4.0%) of genes in pham
- Manual Annotations of this start: 2 of 36
- Called 100.0% of time when present
- Phage (with cluster) where this start called: Didgeridoo_31 (EB), Finalfrontier_30 (EB),

Start 39:

- Found in 2 of 50 (4.0%) of genes in pham
- Manual Annotations of this start: 2 of 36
- Called 100.0% of time when present
- Phage (with cluster) where this start called: Gaia_18 (X), Nebkiss_19 (X),

Start 41:

- Found in 12 of 50 (24.0%) of genes in pham
- Manual Annotations of this start: 12 of 36
- Called 100.0% of time when present
- Phage (with cluster) where this start called: Anaysia_70 (A15), Battleship_72 (A15), Epsocamisio_67 (A15), JSwag_69 (A15), LastResort_68 (A15), MinecraftSteve_70 (A15), Nebulosus_68 (A15), ReMo_68 (A15), Remus_70 (A15), ShayRa_70 (A15), Strosahl_70 (A15), Switzerland_69 (A15),

Start 42:

- Found in 1 of 50 (2.0%) of genes in pham

- Manual Annotations of this start: 1 of 36
- Called 100.0% of time when present
- Phage (with cluster) where this start called: Button_55 (CT),

Start 43:

- Found in 4 of 50 (8.0%) of genes in pham
- Manual Annotations of this start: 3 of 36
- Called 100.0% of time when present
- Phage (with cluster) where this start called: CartmannCramer_58 (A1), Ebony_61 (A11), MyraDee_58 (A18), Salz_60 (A11),

Start 44:

- Found in 2 of 50 (4.0%) of genes in pham
- Manual Annotations of this start: 1 of 36
- Called 50.0% of time when present
- Phage (with cluster) where this start called: Ponzi_32 (singleton),

Start 47:

- Found in 3 of 50 (6.0%) of genes in pham
- Manual Annotations of this start: 2 of 36
- Called 100.0% of time when present
- Phage (with cluster) where this start called: Fabian_65 (BF), Kinmap_60 (A21), Nedarya_66 (A15),

Start 48:

- Found in 7 of 50 (14.0%) of genes in pham
- Manual Annotations of this start: 3 of 36
- Called 57.1% of time when present
- Phage (with cluster) where this start called: BobbyDazzler_51 (CA), Krishelle_51 (CA), RER2_44 (CA), Yoncess_50 (CA),

Start 49:

- Found in 3 of 50 (6.0%) of genes in pham
- No Manual Annotations of this start.
- Called 100.0% of time when present
- Phage (with cluster) where this start called: Bradman_61 (A2), MajorMajor_61 (A2), Quokka_60 (A2),

Start 50:

- Found in 1 of 50 (2.0%) of genes in pham
- Manual Annotations of this start: 1 of 36
- Called 100.0% of time when present
- Phage (with cluster) where this start called: Mabel_60 (A11),

Start 51:

- Found in 2 of 50 (4.0%) of genes in pham
- Manual Annotations of this start: 1 of 36
- Called 100.0% of time when present
- Phage (with cluster) where this start called: NothingSpecial_59 (A2), Tailonex_57 (singleton),

Start 52:

- Found in 2 of 50 (4.0%) of genes in pham

- Manual Annotations of this start: 2 of 36
- Called 100.0% of time when present
- Phage (with cluster) where this start called: Auspice_77 (M1), Bricole_75 (M1),

Start 55:

- Found in 3 of 50 (6.0%) of genes in pham
- Manual Annotations of this start: 1 of 36
- Called 100.0% of time when present
- Phage (with cluster) where this start called: Gachnar_59 (A1), IgnatiusPatJac_59 (A1), Teodoridan_57 (A1),

Start 56:

- Found in 3 of 50 (6.0%) of genes in pham
- Manual Annotations of this start: 1 of 36
- Called 33.3% of time when present
- Phage (with cluster) where this start called: Hannaconda_119 (J),

Start 58:

- Found in 2 of 50 (4.0%) of genes in pham
- Manual Annotations of this start: 1 of 36
- Called 50.0% of time when present
- Phage (with cluster) where this start called: Enyigma_268 (BE2),

Start 59:

- Found in 1 of 50 (2.0%) of genes in pham
- Manual Annotations of this start: 1 of 36
- Called 100.0% of time when present
- Phage (with cluster) where this start called: Konstantine_6 (H1),

Start 60:

- Found in 1 of 50 (2.0%) of genes in pham
- No Manual Annotations of this start.
- Called 100.0% of time when present
- Phage (with cluster) where this start called: Tarnish_2 (CT),

Start 61:

- Found in 1 of 50 (2.0%) of genes in pham
- No Manual Annotations of this start.
- Called 100.0% of time when present
- Phage (with cluster) where this start called: Balloona_52 (CT),

Start 64:

- Found in 2 of 50 (4.0%) of genes in pham
- No Manual Annotations of this start.
- Called 50.0% of time when present
- Phage (with cluster) where this start called: PandaPo_38 (AZ1),

Start 65:

- Found in 1 of 50 (2.0%) of genes in pham
- No Manual Annotations of this start.
- Called 100.0% of time when present
- Phage (with cluster) where this start called: REQ1_82 (CF),

Start 66:

- Found in 2 of 50 (4.0%) of genes in pham
- No Manual Annotations of this start.
- Called 50.0% of time when present
- Phage (with cluster) where this start called: Cardigan_148 (DD),

Summary by clusters:

There are 19 clusters represented in this pham: A15, A21, singleton, H1, A11, A18, DD, J, CF, EB, A1, BF, A2, M1, AZ1, BE2, X, CA, CT,

Info for manual annotations of cluster A1:

- Start number 55 was manually annotated 1 time for cluster A1.

Info for manual annotations of cluster A11:

- Start number 43 was manually annotated 2 times for cluster A11.
- Start number 50 was manually annotated 1 time for cluster A11.

Info for manual annotations of cluster A15:

- Start number 41 was manually annotated 12 times for cluster A15.
- Start number 47 was manually annotated 1 time for cluster A15.

Info for manual annotations of cluster A18:

- Start number 43 was manually annotated 1 time for cluster A18.

Info for manual annotations of cluster A2:

- Start number 51 was manually annotated 1 time for cluster A2.

Info for manual annotations of cluster BE2:

- Start number 58 was manually annotated 1 time for cluster BE2.

Info for manual annotations of cluster BF:

- Start number 47 was manually annotated 1 time for cluster BF.

Info for manual annotations of cluster CA:

- Start number 48 was manually annotated 3 times for cluster CA.

Info for manual annotations of cluster CT:

- Start number 42 was manually annotated 1 time for cluster CT.

Info for manual annotations of cluster EB:

- Start number 28 was manually annotated 2 times for cluster EB.
- Start number 38 was manually annotated 2 times for cluster EB.

Info for manual annotations of cluster H1:

- Start number 59 was manually annotated 1 time for cluster H1.

Info for manual annotations of cluster J:

- Start number 56 was manually annotated 1 time for cluster J.

Info for manual annotations of cluster M1:

- Start number 52 was manually annotated 2 times for cluster M1.

Info for manual annotations of cluster X:

- Start number 39 was manually annotated 2 times for cluster X.

Gene Information:

Gene: Anaysia_70 Start: 39921, Stop: 39553, Start Num: 41

Candidate Starts for Anaysia_70:

(16, 40029), (22, 40011), (Start: 41 @39921 has 12 MA's), (83, 39711), (102, 39585), (107, 39567),

Gene: AnnaLie_3 Start: 681, Stop: 1031, Start Num: 28

Candidate Starts for AnnaLie_3:

(Start: 28 @681 has 2 MA's), (54, 786), (67, 828), (93, 978),

Gene: Auspice_77 Start: 49327, Stop: 49590, Start Num: 52

Candidate Starts for Auspice_77:

(15, 49174), (Start: 52 @49327 has 2 MA's), (71, 49417), (86, 49498),

Gene: Balloona_52 Start: 38168, Stop: 37893, Start Num: 61

Candidate Starts for Balloona_52:

(14, 38369), (18, 38357), (33, 38294), (40, 38258), (61, 38168), (68, 38126), (90, 38000), (91, 37997), (92, 37991), (96, 37967), (98, 37955), (99, 37946),

Gene: Battleship_72 Start: 40127, Stop: 39759, Start Num: 41

Candidate Starts for Battleship_72:

(16, 40235), (22, 40217), (Start: 41 @40127 has 12 MA's), (83, 39917), (102, 39791), (107, 39773),

Gene: BelmontSKP_3 Start: 681, Stop: 1031, Start Num: 28

Candidate Starts for BelmontSKP_3:

(Start: 28 @681 has 2 MA's), (54, 786), (67, 828), (93, 978),

Gene: BobbyDazzler_51 Start: 36743, Stop: 36405, Start Num: 48

Candidate Starts for BobbyDazzler_51:

(30, 36845), (Start: 48 @36743 has 3 MA's), (83, 36566), (90, 36527), (91, 36524), (93, 36515), (101, 36449),

Gene: Bradman_61 Start: 38947, Stop: 38609, Start Num: 49

Candidate Starts for Bradman_61:

(12, 39106), (25, 39067), (49, 38947), (88, 38755),

Gene: Bricole_75 Start: 48816, Stop: 49079, Start Num: 52

Candidate Starts for Bricole_75:

(Start: 52 @48816 has 2 MA's), (71, 48906), (86, 48987),

Gene: Button_55 Start: 37507, Stop: 37208, Start Num: 42

Candidate Starts for Button_55:

(13, 37642), (17, 37636), (22, 37618), (Start: 42 @37507 has 1 MA's), (45, 37486), (72, 37378), (74, 37366), (82, 37303), (85, 37288), (86, 37285),

Gene: Cardigan_148 Start: 81042, Stop: 81335, Start Num: 66
Candidate Starts for Cardigan_148:
(31, 80895), (66, 81042), (79, 81144), (90, 81216), (91, 81219), (101, 81294), (102, 81303), (109, 81330),

Gene: CartmannCramer_58 Start: 42140, Stop: 41766, Start Num: 43
Candidate Starts for CartmannCramer_58:
(13, 42278), (24, 42245), (Start: 43 @42140 has 3 MA's), (90, 41912), (101, 41834),

Gene: Didgeridoo_31 Start: 22465, Stop: 22809, Start Num: 38
Candidate Starts for Didgeridoo_31:
(Start: 38 @22465 has 2 MA's), (57, 22555), (79, 22678), (85, 22714), (92, 22747),

Gene: Ebony_61 Start: 38810, Stop: 38445, Start Num: 43
Candidate Starts for Ebony_61:
(12, 38942), (25, 38906), (35, 38864), (Start: 43 @38810 has 3 MA's), (Start: 56 @38771 has 1 MA's), (78, 38648), (85, 38606), (88, 38594), (110, 38459),

Gene: Enygma_268 Start: 121650, Stop: 121411, Start Num: 58
Candidate Starts for Enygma_268:
(4, 121953), (19, 121830), (36, 121752), (Start: 58 @121650 has 1 MA's), (68, 121599), (69, 121596), (92, 121467), (99, 121422),

Gene: Epsocamisio_67 Start: 39456, Stop: 39088, Start Num: 41
Candidate Starts for Epsocamisio_67:
(22, 39546), (Start: 41 @39456 has 12 MA's), (83, 39246), (102, 39120), (107, 39102),

Gene: Fabian_65 Start: 36190, Stop: 36489, Start Num: 47
Candidate Starts for Fabian_65:
(Start: 47 @36190 has 2 MA's), (53, 36193), (68, 36259), (73, 36280), (96, 36442),

Gene: Finalfrontier_30 Start: 22829, Stop: 23173, Start Num: 38
Candidate Starts for Finalfrontier_30:
(Start: 38 @22829 has 2 MA's), (57, 22919), (79, 23042), (85, 23078), (92, 23111),

Gene: Gachnar_59 Start: 40593, Stop: 40255, Start Num: 55
Candidate Starts for Gachnar_59:
(29, 40719), (37, 40671), (Start: 48 @40611 has 3 MA's), (Start: 55 @40593 has 1 MA's), (86, 40422), (90, 40401), (101, 40323),

Gene: Gaia_18 Start: 17322, Stop: 17690, Start Num: 39
Candidate Starts for Gaia_18:
(Start: 39 @17322 has 2 MA's), (89, 17610),

Gene: Hannaconda_119 Start: 67166, Stop: 67480, Start Num: 56
Candidate Starts for Hannaconda_119:
(7, 66944), (11, 66980), (Start: 56 @67166 has 1 MA's), (78, 67289), (88, 67367), (91, 67382), (94, 67403), (97, 67421),

Gene: IgnatiusPatJac_59 Start: 40122, Stop: 39781, Start Num: 55
Candidate Starts for IgnatiusPatJac_59:

(29, 40248), (37, 40200), (Start: 48 @40140 has 3 MA's), (Start: 55 @40122 has 1 MA's), (86, 39951), (90, 39930), (101, 39852), (108, 39813),

Gene: JSwag_69 Start: 39645, Stop: 39277, Start Num: 41

Candidate Starts for JSwag_69:

(16, 39753), (22, 39735), (Start: 41 @39645 has 12 MA's), (83, 39435), (102, 39309), (107, 39291),

Gene: Kinmap_60 Start: 38242, Stop: 37898, Start Num: 47

Candidate Starts for Kinmap_60:

(21, 38374), (Start: 47 @38242 has 2 MA's), (76, 38104), (88, 38041),

Gene: Konstantine_6 Start: 4385, Stop: 4636, Start Num: 59

Candidate Starts for Konstantine_6:

(1, 3959), (2, 4049), (3, 4073), (5, 4109), (10, 4169), (32, 4250), (Start: 59 @4385 has 1 MA's), (67, 4409), (68, 4433), (75, 4463), (95, 4592),

Gene: Krishelle_51 Start: 37066, Stop: 36728, Start Num: 48

Candidate Starts for Krishelle_51:

(30, 37168), (Start: 48 @37066 has 3 MA's), (83, 36889), (90, 36850), (91, 36847), (93, 36838), (101, 36772),

Gene: LastResort_68 Start: 39697, Stop: 39329, Start Num: 41

Candidate Starts for LastResort_68:

(16, 39805), (22, 39787), (Start: 41 @39697 has 12 MA's), (83, 39487), (102, 39361), (107, 39343),

Gene: Mabel_60 Start: 38750, Stop: 38463, Start Num: 50

Candidate Starts for Mabel_60:

(23, 38888), (27, 38873), (46, 38762), (Start: 50 @38750 has 1 MA's), (Start: 58 @38720 has 1 MA's), (63, 38711), (66, 38702), (86, 38561), (87, 38555), (96, 38507),

Gene: MajorMajor_61 Start: 38947, Stop: 38609, Start Num: 49

Candidate Starts for MajorMajor_61:

(12, 39106), (25, 39067), (49, 38947), (88, 38755),

Gene: MinecraftSteve_70 Start: 39933, Stop: 39565, Start Num: 41

Candidate Starts for MinecraftSteve_70:

(16, 40041), (22, 40023), (Start: 41 @39933 has 12 MA's), (83, 39723), (102, 39597), (107, 39579),

Gene: MyraDee_58 Start: 36584, Stop: 36225, Start Num: 43

Candidate Starts for MyraDee_58:

(13, 36716), (Start: 43 @36584 has 3 MA's), (64, 36524), (86, 36374), (100, 36293),

Gene: Nebkiss_19 Start: 17323, Stop: 17691, Start Num: 39

Candidate Starts for Nebkiss_19:

(Start: 39 @17323 has 2 MA's), (89, 17611),

Gene: Nebulosus_68 Start: 39693, Stop: 39325, Start Num: 41

Candidate Starts for Nebulosus_68:

(22, 39783), (Start: 41 @39693 has 12 MA's), (83, 39483), (102, 39357), (107, 39339),

Gene: Nedarya_66 Start: 39619, Stop: 39284, Start Num: 47

Candidate Starts for Nedarya_66:

(20, 39748), (Start: 47 @39619 has 2 MA's), (102, 39316), (103, 39313), (107, 39298),

Gene: NothingSpecial_59 Start: 39991, Stop: 39656, Start Num: 51
Candidate Starts for NothingSpecial_59:
(22, 40126), (25, 40114), (Start: 51 @39991 has 1 MA's), (88, 39802), (109, 39670),

Gene: PandaPo_38 Start: 27626, Stop: 27865, Start Num: 64
Candidate Starts for PandaPo_38:
(8, 27398), (9, 27407), (Start: 44 @27563 has 1 MA's), (64, 27626),

Gene: Ponzi_32 Start: 17880, Stop: 17527, Start Num: 44
Candidate Starts for Ponzi_32:
(29, 17964), (Start: 44 @17880 has 1 MA's), (69, 17781), (73, 17763), (99, 17604), (105, 17559), (106, 17553),

Gene: Quokka_60 Start: 38947, Stop: 38609, Start Num: 49
Candidate Starts for Quokka_60:
(12, 39106), (25, 39067), (49, 38947), (88, 38755),

Gene: REQ1_82 Start: 49241, Stop: 49534, Start Num: 65
Candidate Starts for REQ1_82:
(6, 48968), (26, 49073), (65, 49241), (68, 49277), (70, 49286), (77, 49337), (89, 49427), (95, 49460),

Gene: RER2_44 Start: 33569, Stop: 33231, Start Num: 48
Candidate Starts for RER2_44:
(30, 33671), (Start: 48 @33569 has 3 MA's), (83, 33392), (90, 33353), (91, 33350), (93, 33341), (101, 33275),

Gene: ReMo_68 Start: 39694, Stop: 39326, Start Num: 41
Candidate Starts for ReMo_68:
(16, 39802), (22, 39784), (Start: 41 @39694 has 12 MA's), (83, 39484), (102, 39358), (107, 39340),

Gene: Remus_70 Start: 39685, Stop: 39317, Start Num: 41
Candidate Starts for Remus_70:
(16, 39793), (22, 39775), (Start: 41 @39685 has 12 MA's), (83, 39475), (102, 39349), (107, 39331),

Gene: Salz_60 Start: 38758, Stop: 38393, Start Num: 43
Candidate Starts for Salz_60:
(12, 38890), (25, 38854), (35, 38812), (Start: 43 @38758 has 3 MA's), (Start: 56 @38719 has 1 MA's), (78, 38596), (85, 38554), (88, 38542), (110, 38407),

Gene: ShayRa_70 Start: 39881, Stop: 39513, Start Num: 41
Candidate Starts for ShayRa_70:
(16, 39989), (22, 39971), (Start: 41 @39881 has 12 MA's), (83, 39671), (102, 39545), (107, 39527),

Gene: Strosahl_70 Start: 39685, Stop: 39317, Start Num: 41
Candidate Starts for Strosahl_70:
(16, 39793), (22, 39775), (Start: 41 @39685 has 12 MA's), (83, 39475), (102, 39349), (107, 39331),

Gene: Switzerland_69 Start: 40020, Stop: 39652, Start Num: 41
Candidate Starts for Switzerland_69:
(16, 40128), (22, 40110), (Start: 41 @40020 has 12 MA's), (83, 39810), (102, 39684), (107, 39666),

Gene: Tailonex_57 Start: 40296, Stop: 39958, Start Num: 51

Candidate Starts for Tailonex_57:

(29, 40407), (35, 40377), (Start: 51 @40296 has 1 MA's), (67, 40248), (96, 40059), (101, 40014), (104, 39996),

Gene: Tarnish_2 Start: 748, Stop: 1005, Start Num: 60

Candidate Starts for Tarnish_2:

(34, 640), (60, 748), (62, 751), (80, 874), (81, 880), (84, 907), (85, 916),

Gene: Teodoridan_57 Start: 39474, Stop: 39133, Start Num: 55

Candidate Starts for Teodoridan_57:

(29, 39600), (37, 39552), (Start: 48 @39492 has 3 MA's), (Start: 55 @39474 has 1 MA's), (86, 39303), (90, 39282), (101, 39204), (108, 39165),

Gene: Yoncess_50 Start: 36451, Stop: 36113, Start Num: 48

Candidate Starts for Yoncess_50:

(30, 36553), (Start: 48 @36451 has 3 MA's), (83, 36274), (90, 36235), (91, 36232), (93, 36223), (101, 36157),