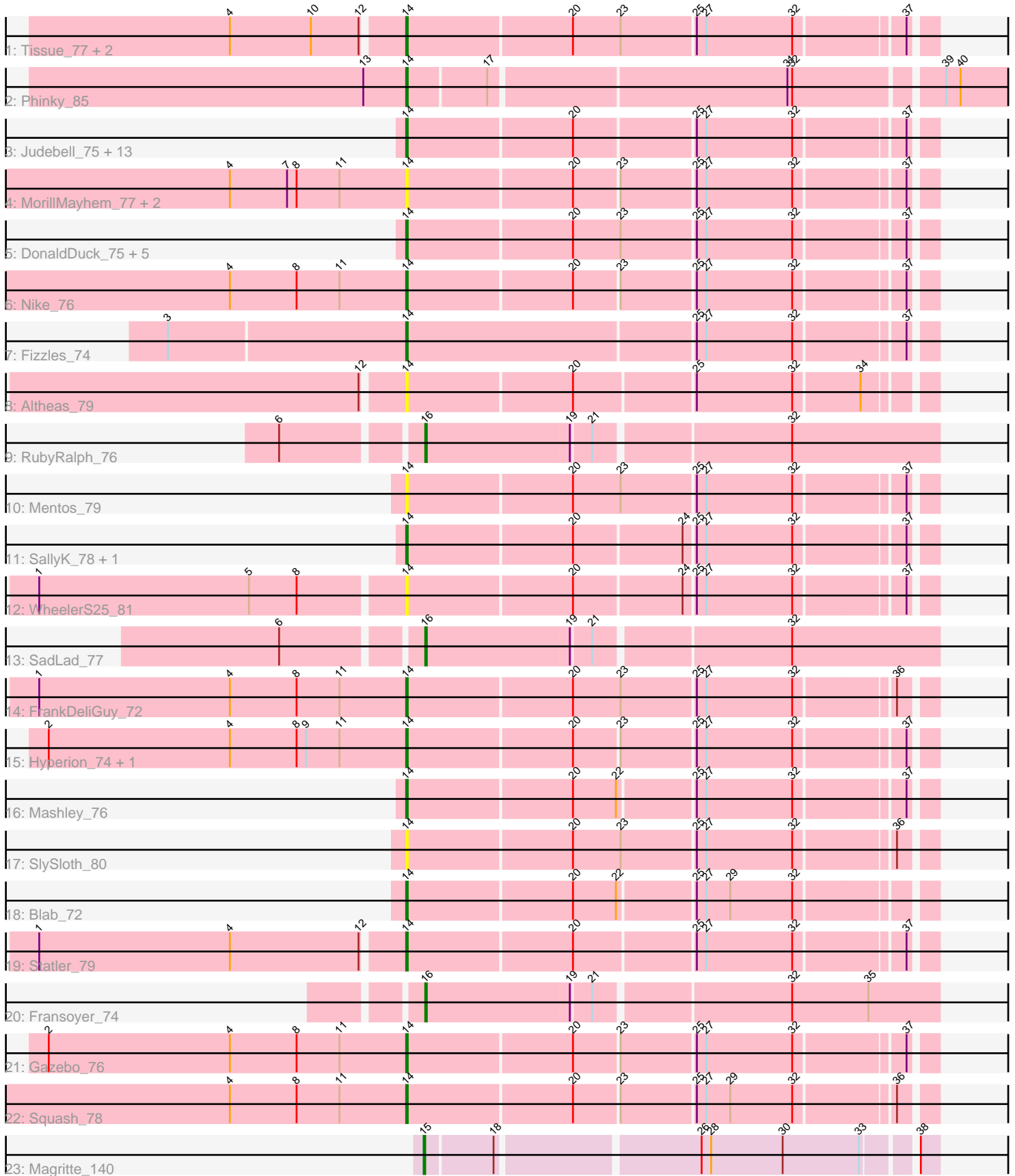


Pham 294844



Note: Tracks are now grouped by subcluster and scaled. Switching in subcluster is indicated by changes in track color. Track scale is now set by default to display the region 30 bp upstream of start 1 to 30 bp downstream of the last possible start. If this default region is judged to be packed too tightly with annotated starts, the track will be further scaled to only show that region of the ORF with annotated starts. This action will be indicated by adding "Zoomed" to the title. For starts, yellow indicates the location of called starts comprised solely of Glimmer/GeneMark auto-annotations, green indicates the location of called starts with at least 1 manual gene annotation.

## Pham 294844 Report

This analysis was run 04/18/26 on database version 643.

Pham number 294844 has 47 members, 7 are drafts.

Phages represented in each track:

- Track 1 : Tissue\_77, Grassboy\_79, Kyva\_79
- Track 2 : Phinky\_85
- Track 3 : Judebell\_75, Phabia\_75, Quammi\_74, Zagie\_76, BabyDotz\_73, Lonelysoil\_73, Casend\_76, Wayne3\_77, Wheelie\_75, Rudy\_73, Zhafia\_78, Teehee\_76, StrawberryJamm\_80, Jehoshaphat\_77
- Track 4 : MorillMayhem\_77, BaconCheese\_81, Mila11\_79
- Track 5 : DonaldDuck\_75, Namago\_77, EverythinBagel\_75, Viceroy\_74, Llemily\_75, Sillytadpoles\_76
- Track 6 : Nike\_76
- Track 7 : Fizzles\_74
- Track 8 : Altheas\_79
- Track 9 : RubyRalph\_76
- Track 10 : Mentos\_79
- Track 11 : SallyK\_78, Rowlf\_73
- Track 12 : WheelerS25\_81
- Track 13 : SadLad\_77
- Track 14 : FrankDeliGuy\_72
- Track 15 : Hyperion\_74, AluminumJesus\_72
- Track 16 : Mashley\_76
- Track 17 : SlySloth\_80
- Track 18 : Blab\_72
- Track 19 : Statler\_79
- Track 20 : Fransoyer\_74
- Track 21 : Gazebo\_76
- Track 22 : Squash\_78
- Track 23 : Magritte\_140

### ***Summary of Final Annotations (See graph section above for start numbers):***

The start number called the most often in the published annotations is 14, it was called in 36 of the 40 non-draft genes in the pham.

Genes that call this "Most Annotated" start:

- Altheas\_79, AluminumJesus\_72, BabyDotz\_73, BaconCheese\_81, Blab\_72, Casend\_76, DonaldDuck\_75, EverythinBagel\_75, Fizzles\_74, FrankDeliGuy\_72, Gazebo\_76, Grassboy\_79, Hyperion\_74, Jehoshaphat\_77, Judebell\_75, Kyva\_79, Llemily\_75, Lonelysoil\_73, Mashley\_76, Mentos\_79, Mila11\_79, MorillMayhem\_77, Namago\_77, Nike\_76, Phabia\_75, Phinky\_85, Quammi\_74, Rowlf\_73, Rudy\_73, SallyK\_78, Sillytadpoles\_76, SlySloth\_80, Squash\_78, Statler\_79, StrawberryJamm\_80, Teehee\_76, Tissue\_77, Viceroy\_74, Wayne3\_77, WheelerS25\_81, Wheelie\_75, Zagie\_76, Zhafia\_78,

Genes that have the "Most Annotated" start but do not call it:

- 

Genes that do not have the "Most Annotated" start:

- Fransoyer\_74, Magritte\_140, RubyRalph\_76, SadLad\_77,

### Summary by start number:

Start 14:

- Found in 43 of 47 ( 91.5% ) of genes in pham
- Manual Annotations of this start: 36 of 40
- Called 100.0% of time when present
- Phage (with cluster) where this start called: Altheas\_79 (EG), AluminumJesus\_72 (EG), BabyDotz\_73 (EG), BaconCheese\_81 (EG), Blab\_72 (EG), Casend\_76 (EG), DonaldDuck\_75 (EG), EverythinBagel\_75 (EG), Fizzles\_74 (EG), FrankDeliGuy\_72 (EG), Gazebo\_76 (EG), Grassboy\_79 (EG), Hyperion\_74 (EG), Jehoshaphat\_77 (EG), Judebell\_75 (EG), Kyva\_79 (EG), Llemily\_75 (EG), Lonelysoil\_73 (EG), Mashley\_76 (EG), Mentos\_79 (EG), Mila11\_79 (EG), MorillMayhem\_77 (EG), Namago\_77 (EG), Nike\_76 (EG), Phabia\_75 (EG), Phinky\_85 (EG), Quammi\_74 (EG), Rowlf\_73 (EG), Rudy\_73 (EG), SallyK\_78 (EG), Sillytadpoles\_76 (EG), SlySloth\_80 (EG), Squash\_78 (EG), Statler\_79 (EG), StrawberryJamm\_80 (EG), Teehee\_76 (EG), Tissue\_77 (EG), Viceroy\_74 (EG), Wayne3\_77 (EG), WheelerS25\_81 (EG), Wheelie\_75 (EG), Zagie\_76 (EG), Zhafia\_78 (EG),

Start 15:

- Found in 1 of 47 ( 2.1% ) of genes in pham
- Manual Annotations of this start: 1 of 40
- Called 100.0% of time when present
- Phage (with cluster) where this start called: Magritte\_140 (singleton),

Start 16:

- Found in 3 of 47 ( 6.4% ) of genes in pham
- Manual Annotations of this start: 3 of 40
- Called 100.0% of time when present
- Phage (with cluster) where this start called: Fransoyer\_74 (EG), RubyRalph\_76 (EG), SadLad\_77 (EG),

### Summary by clusters:

There are 2 clusters represented in this pham: EG, singleton,

Info for manual annotations of cluster EG:

- Start number 14 was manually annotated 36 times for cluster EG.
- Start number 16 was manually annotated 3 times for cluster EG.

**Gene Information:**

Gene: Altheas\_79 Start: 51911, Stop: 51600, Start Num: 14

Candidate Starts for Altheas\_79:

(12, 51935), (Start: 14 @51911 has 36 MA's), (20, 51809), (25, 51737), (32, 51677), (34, 51638),

Gene: AluminumJesus\_72 Start: 50517, Stop: 50206, Start Num: 14

Candidate Starts for AluminumJesus\_72:

(2, 50742), (4, 50628), (8, 50586), (9, 50580), (11, 50559), (Start: 14 @50517 has 36 MA's), (20, 50415), (23, 50388), (25, 50343), (27, 50337), (32, 50283), (37, 50220),

Gene: BabyDotz\_73 Start: 51913, Stop: 51602, Start Num: 14

Candidate Starts for BabyDotz\_73:

(Start: 14 @51913 has 36 MA's), (20, 51811), (25, 51739), (27, 51733), (32, 51679), (37, 51616),

Gene: BaconCheese\_81 Start: 52843, Stop: 52532, Start Num: 14

Candidate Starts for BaconCheese\_81:

(4, 52954), (7, 52918), (8, 52912), (11, 52885), (Start: 14 @52843 has 36 MA's), (20, 52741), (23, 52714), (25, 52669), (27, 52663), (32, 52609), (37, 52546),

Gene: Blab\_72 Start: 50808, Stop: 50497, Start Num: 14

Candidate Starts for Blab\_72:

(Start: 14 @50808 has 36 MA's), (20, 50706), (22, 50679), (25, 50634), (27, 50628), (29, 50613), (32, 50574),

Gene: Casend\_76 Start: 51470, Stop: 51159, Start Num: 14

Candidate Starts for Casend\_76:

(Start: 14 @51470 has 36 MA's), (20, 51368), (25, 51296), (27, 51290), (32, 51236), (37, 51173),

Gene: DonaldDuck\_75 Start: 50822, Stop: 50508, Start Num: 14

Candidate Starts for DonaldDuck\_75:

(Start: 14 @50822 has 36 MA's), (20, 50720), (23, 50690), (25, 50645), (27, 50639), (32, 50585), (37, 50522),

Gene: EverythinBagel\_75 Start: 51307, Stop: 50993, Start Num: 14

Candidate Starts for EverythinBagel\_75:

(Start: 14 @51307 has 36 MA's), (20, 51205), (23, 51175), (25, 51130), (27, 51124), (32, 51070), (37, 51007),

Gene: Fizzles\_74 Start: 50820, Stop: 50506, Start Num: 14

Candidate Starts for Fizzles\_74:

(3, 50967), (Start: 14 @50820 has 36 MA's), (25, 50643), (27, 50637), (32, 50583), (37, 50520),

Gene: FrankDeliGuy\_72 Start: 50918, Stop: 50604, Start Num: 14

Candidate Starts for FrankDeliGuy\_72:

(1, 51149), (4, 51029), (8, 50987), (11, 50960), (Start: 14 @50918 has 36 MA's), (20, 50816), (23, 50786), (25, 50741), (27, 50735), (32, 50681), (36, 50624),

Gene: Fransoyer\_74 Start: 51279, Stop: 50968, Start Num: 16

Candidate Starts for Fransoyer\_74:

(Start: 16 @51279 has 3 MA's), (19, 51189), (21, 51177), (32, 51060), (35, 51012),

Gene: Gazebo\_76 Start: 51735, Stop: 51424, Start Num: 14

Candidate Starts for Gazebo\_76:

(2, 51960), (4, 51846), (8, 51804), (11, 51777), (Start: 14 @51735 has 36 MA's), (20, 51633), (23, 51606), (25, 51561), (27, 51555), (32, 51501), (37, 51438),

Gene: Grassboy\_79 Start: 51602, Stop: 51288, Start Num: 14

Candidate Starts for Grassboy\_79:

(4, 51707), (10, 51656), (12, 51626), (Start: 14 @51602 has 36 MA's), (20, 51500), (23, 51470), (25, 51425), (27, 51419), (32, 51365), (37, 51302),

Gene: Hyperion\_74 Start: 50998, Stop: 50687, Start Num: 14

Candidate Starts for Hyperion\_74:

(2, 51223), (4, 51109), (8, 51067), (9, 51061), (11, 51040), (Start: 14 @50998 has 36 MA's), (20, 50896), (23, 50869), (25, 50824), (27, 50818), (32, 50764), (37, 50701),

Gene: Jehoshaphat\_77 Start: 51738, Stop: 51427, Start Num: 14

Candidate Starts for Jehoshaphat\_77:

(Start: 14 @51738 has 36 MA's), (20, 51636), (25, 51564), (27, 51558), (32, 51504), (37, 51441),

Gene: Judebell\_75 Start: 50962, Stop: 50651, Start Num: 14

Candidate Starts for Judebell\_75:

(Start: 14 @50962 has 36 MA's), (20, 50860), (25, 50788), (27, 50782), (32, 50728), (37, 50665),

Gene: Kyva\_79 Start: 51626, Stop: 51312, Start Num: 14

Candidate Starts for Kyva\_79:

(4, 51731), (10, 51680), (12, 51650), (Start: 14 @51626 has 36 MA's), (20, 51524), (23, 51494), (25, 51449), (27, 51443), (32, 51389), (37, 51326),

Gene: Llemily\_75 Start: 50517, Stop: 50203, Start Num: 14

Candidate Starts for Llemily\_75:

(Start: 14 @50517 has 36 MA's), (20, 50415), (23, 50385), (25, 50340), (27, 50334), (32, 50280), (37, 50217),

Gene: Lonelysoil\_73 Start: 50274, Stop: 49963, Start Num: 14

Candidate Starts for Lonelysoil\_73:

(Start: 14 @50274 has 36 MA's), (20, 50172), (25, 50100), (27, 50094), (32, 50040), (37, 49977),

Gene: Magritte\_140 Start: 87455, Stop: 87751, Start Num: 15

Candidate Starts for Magritte\_140:

(Start: 15 @87455 has 1 MA's), (18, 87494), (26, 87614), (28, 87620), (30, 87665), (33, 87713), (38, 87740),

Gene: Mashley\_76 Start: 51520, Stop: 51209, Start Num: 14

Candidate Starts for Mashley\_76:

(Start: 14 @51520 has 36 MA's), (20, 51418), (22, 51391), (25, 51346), (27, 51340), (32, 51286), (37, 51223),

Gene: Mentos\_79 Start: 52190, Stop: 51876, Start Num: 14

Candidate Starts for Mentos\_79:

(Start: 14 @52190 has 36 MA's), (20, 52088), (23, 52058), (25, 52013), (27, 52007), (32, 51953), (37, 51890),

Gene: Mila11\_79 Start: 52894, Stop: 52583, Start Num: 14

Candidate Starts for Mila11\_79:

(4, 53005), (7, 52969), (8, 52963), (11, 52936), (Start: 14 @52894 has 36 MA's), (20, 52792), (23, 52765), (25, 52720), (27, 52714), (32, 52660), (37, 52597),

Gene: MorillMayhem\_77 Start: 51733, Stop: 51422, Start Num: 14

Candidate Starts for MorillMayhem\_77:

(4, 51844), (7, 51808), (8, 51802), (11, 51775), (Start: 14 @51733 has 36 MA's), (20, 51631), (23, 51604), (25, 51559), (27, 51553), (32, 51499), (37, 51436),

Gene: Namago\_77 Start: 50967, Stop: 50656, Start Num: 14

Candidate Starts for Namago\_77:

(Start: 14 @50967 has 36 MA's), (20, 50865), (23, 50835), (25, 50790), (27, 50784), (32, 50730), (37, 50667),

Gene: Nike\_76 Start: 51878, Stop: 51567, Start Num: 14

Candidate Starts for Nike\_76:

(4, 51989), (8, 51947), (11, 51920), (Start: 14 @51878 has 36 MA's), (20, 51776), (23, 51749), (25, 51704), (27, 51698), (32, 51644), (37, 51581),

Gene: Phabia\_75 Start: 50929, Stop: 50618, Start Num: 14

Candidate Starts for Phabia\_75:

(Start: 14 @50929 has 36 MA's), (20, 50827), (25, 50755), (27, 50749), (32, 50695), (37, 50632),

Gene: Phinky\_85 Start: 54145, Stop: 53765, Start Num: 14

Candidate Starts for Phinky\_85:

(13, 54172), (Start: 14 @54145 has 36 MA's), (17, 54097), (31, 53917), (32, 53914), (39, 53827), (40, 53818),

Gene: Quammi\_74 Start: 50629, Stop: 50318, Start Num: 14

Candidate Starts for Quammi\_74:

(Start: 14 @50629 has 36 MA's), (20, 50527), (25, 50455), (27, 50449), (32, 50395), (37, 50332),

Gene: Rowlf\_73 Start: 50836, Stop: 50525, Start Num: 14

Candidate Starts for Rowlf\_73:

(Start: 14 @50836 has 36 MA's), (20, 50734), (24, 50668), (25, 50662), (27, 50656), (32, 50602), (37, 50539),

Gene: RubyRalph\_76 Start: 51304, Stop: 50993, Start Num: 16

Candidate Starts for RubyRalph\_76:

(6, 51385), (Start: 16 @51304 has 3 MA's), (19, 51214), (21, 51202), (32, 51085),

Gene: Rudy\_73 Start: 50665, Stop: 50354, Start Num: 14

Candidate Starts for Rudy\_73:

(Start: 14 @50665 has 36 MA's), (20, 50563), (25, 50491), (27, 50485), (32, 50431), (37, 50368),

Gene: SadLad\_77 Start: 52210, Stop: 51899, Start Num: 16

Candidate Starts for SadLad\_77:

(6, 52291), (Start: 16 @52210 has 3 MA's), (19, 52120), (21, 52108), (32, 51991),

Gene: SallyK\_78 Start: 52367, Stop: 52056, Start Num: 14

Candidate Starts for SallyK\_78:

(Start: 14 @52367 has 36 MA's), (20, 52265), (24, 52199), (25, 52193), (27, 52187), (32, 52133), (37, 52070),

Gene: Sillytadpoles\_76 Start: 50505, Stop: 50191, Start Num: 14

Candidate Starts for Sillytadpoles\_76:

(Start: 14 @50505 has 36 MA's), (20, 50403), (23, 50373), (25, 50328), (27, 50322), (32, 50268), (37, 50205),

Gene: SlySloth\_80 Start: 51475, Stop: 51161, Start Num: 14

Candidate Starts for SlySloth\_80:

(Start: 14 @51475 has 36 MA's), (20, 51373), (23, 51343), (25, 51298), (27, 51292), (32, 51238), (36, 51181),

Gene: Squash\_78 Start: 51600, Stop: 51289, Start Num: 14

Candidate Starts for Squash\_78:

(4, 51711), (8, 51669), (11, 51642), (Start: 14 @51600 has 36 MA's), (20, 51498), (23, 51471), (25, 51426), (27, 51420), (29, 51405), (32, 51366), (36, 51309),

Gene: Statler\_79 Start: 51552, Stop: 51241, Start Num: 14

Candidate Starts for Statler\_79:

(1, 51777), (4, 51657), (12, 51576), (Start: 14 @51552 has 36 MA's), (20, 51450), (25, 51378), (27, 51372), (32, 51318), (37, 51255),

Gene: StrawberryJamm\_80 Start: 50770, Stop: 50459, Start Num: 14

Candidate Starts for StrawberryJamm\_80:

(Start: 14 @50770 has 36 MA's), (20, 50668), (25, 50596), (27, 50590), (32, 50536), (37, 50473),

Gene: Teehee\_76 Start: 51735, Stop: 51424, Start Num: 14

Candidate Starts for Teehee\_76:

(Start: 14 @51735 has 36 MA's), (20, 51633), (25, 51561), (27, 51555), (32, 51501), (37, 51438),

Gene: Tissue\_77 Start: 51233, Stop: 50919, Start Num: 14

Candidate Starts for Tissue\_77:

(4, 51338), (10, 51287), (12, 51257), (Start: 14 @51233 has 36 MA's), (20, 51131), (23, 51101), (25, 51056), (27, 51050), (32, 50996), (37, 50933),

Gene: Viceroy\_74 Start: 50638, Stop: 50324, Start Num: 14

Candidate Starts for Viceroy\_74:

(Start: 14 @50638 has 36 MA's), (20, 50536), (23, 50506), (25, 50461), (27, 50455), (32, 50401), (37, 50338),

Gene: Wayne3\_77 Start: 51498, Stop: 51187, Start Num: 14

Candidate Starts for Wayne3\_77:

(Start: 14 @51498 has 36 MA's), (20, 51396), (25, 51324), (27, 51318), (32, 51264), (37, 51201),

Gene: WheelerS25\_81 Start: 52133, Stop: 51822, Start Num: 14

Candidate Starts for WheelerS25\_81:

(1, 52358), (5, 52226), (8, 52196), (Start: 14 @52133 has 36 MA's), (20, 52031), (24, 51965), (25, 51959), (27, 51953), (32, 51899), (37, 51836),

Gene: Wheelie\_75 Start: 50819, Stop: 50508, Start Num: 14

Candidate Starts for Wheelie\_75:

(Start: 14 @50819 has 36 MA's), (20, 50717), (25, 50645), (27, 50639), (32, 50585), (37, 50522),

Gene: Zagie\_76 Start: 51047, Stop: 50736, Start Num: 14

Candidate Starts for Zagie\_76:

(Start: 14 @51047 has 36 MA's), (20, 50945), (25, 50873), (27, 50867), (32, 50813), (37, 50750),

Gene: Zhafia\_78 Start: 51299, Stop: 50988, Start Num: 14

Candidate Starts for Zhafia\_78:

(Start: 14 @51299 has 36 MA's), (20, 51197), (25, 51125), (27, 51119), (32, 51065), (37, 51002),