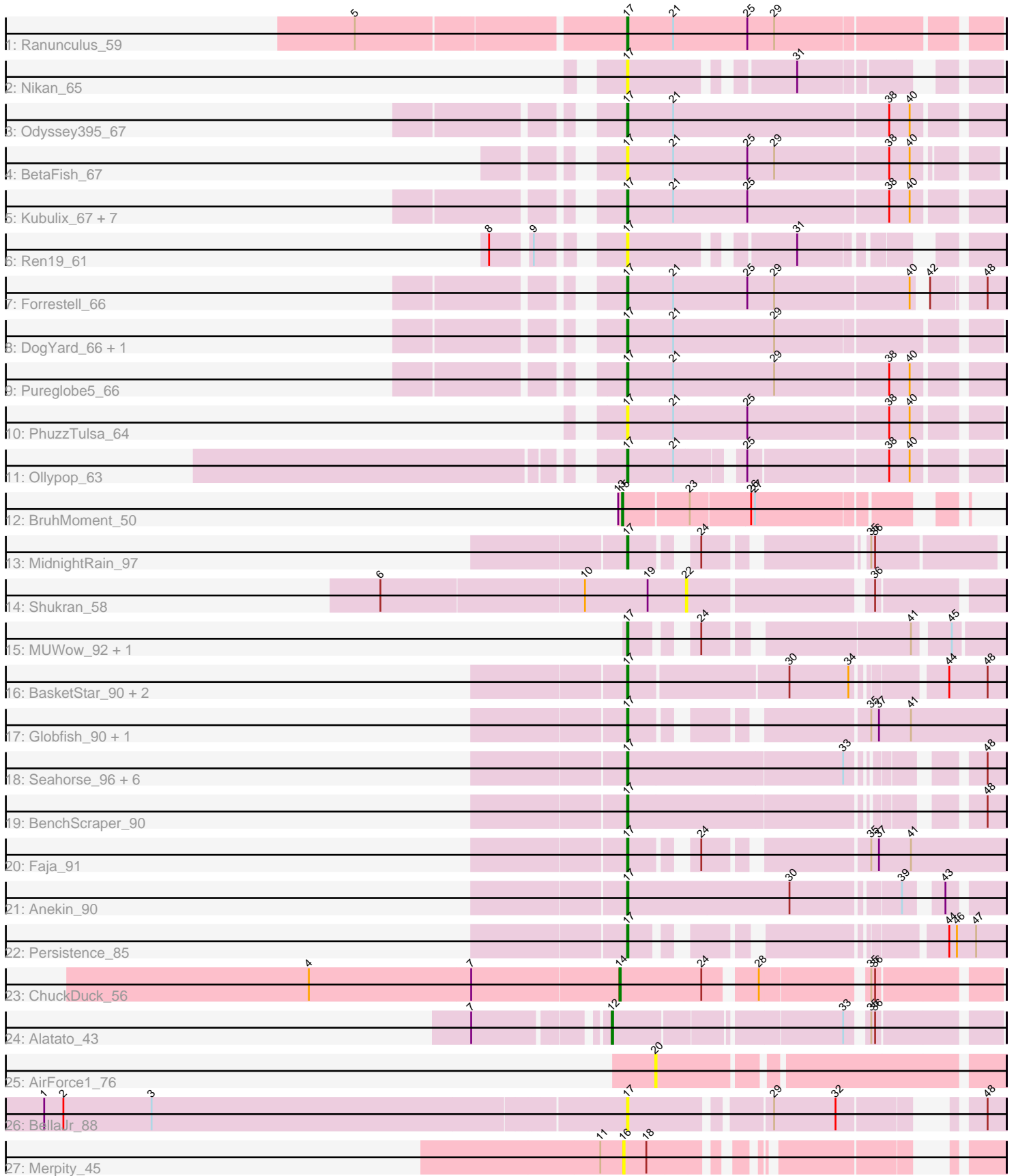


Pham 294852



Note: Tracks are now grouped by subcluster and scaled. Switching in subcluster is indicated by changes in track color. Track scale is now set by default to display the region 30 bp upstream of start 1 to 30 bp downstream of the last possible start. If this default region is judged to be packed too tightly with annotated starts, the track will be further scaled to only show that region of the ORF with annotated starts. This action will be indicated by adding "Zoomed" to the title. For starts, yellow indicates the location of called starts comprised solely of Glimmer/GeneMark auto-annotations, green indicates the location of called starts with at least 1 manual gene annotation.

## Pham 294852 Report

This analysis was run 04/18/26 on database version 643.

Pham number 294852 has 45 members, 18 are drafts.

Phages represented in each track:

- Track 1 : Ranunculus\_59
- Track 2 : Nikan\_65
- Track 3 : Odyssey395\_67
- Track 4 : BetaFish\_67
- Track 5 : Kubulix\_67, RIPWilbur\_66, MellowYellow\_67, NyleyClemson\_66, Beagle\_67, RazzB\_66, Pointis\_64, Hive\_63
- Track 6 : Ren19\_61
- Track 7 : Forrestell\_66
- Track 8 : DogYard\_66, Popstraw\_62
- Track 9 : Pureglobe5\_66
- Track 10 : PhuzzTulsa\_64
- Track 11 : Ollypop\_63
- Track 12 : BruhMoment\_50
- Track 13 : MidnightRain\_97
- Track 14 : Shukran\_58
- Track 15 : MUWow\_92, NewKitty\_91
- Track 16 : BasketStar\_90, DarwinJr\_94, Isolde\_91
- Track 17 : Globfish\_90, SpicyFrank\_92
- Track 18 : Seahorse\_96, Gorpy\_88, Mapleville\_84, Crescenzo\_93, Nyilah\_97, Richie\_93, Sakai\_87
- Track 19 : BenchScraper\_90
- Track 20 : Faja\_91
- Track 21 : Anekin\_90
- Track 22 : Persistence\_85
- Track 23 : ChuckDuck\_56
- Track 24 : Alatato\_43
- Track 25 : AirForce1\_76
- Track 26 : BellaJr\_88
- Track 27 : Merpity\_45

### ***Summary of Final Annotations (See graph section above for start numbers):***

The start number called the most often in the published annotations is 17, it was called in 24 of the 27 non-draft genes in the pham.

Genes that call this "Most Annotated" start:

- Anekin\_90, BasketStar\_90, Beagle\_67, BellaJr\_88, BenchScraper\_90, BetaFish\_67, Crescenzo\_93, DarwinJr\_94, DogYard\_66, Faja\_91, Forrestell\_66, Globfish\_90, Gorpy\_88, Hive\_63, Isolde\_91, Kubulix\_67, MUWow\_92, Mapleville\_84, MellowYellow\_67, MidnightRain\_97, NewKitty\_91, Nikan\_65, Nyilah\_97, NyleyClemson\_66, Odyssey395\_67, Ollypop\_63, Persistence\_85, PhuzzTulsa\_64, Pointis\_64, Popstraw\_62, Pureglobe5\_66, RIPWilbur\_66, Ranunculus\_59, RazzB\_66, Ren19\_61, Richie\_93, Sakai\_87, Seahorse\_96, SpicyFrank\_92,

Genes that have the "Most Annotated" start but do not call it:

- 

Genes that do not have the "Most Annotated" start:

- AirForce1\_76, Alatato\_43, BruhMoment\_50, ChuckDuck\_56, Merpity\_45, Shukran\_58,

### Summary by start number:

Start 12:

- Found in 1 of 45 ( 2.2% ) of genes in pham
- Manual Annotations of this start: 1 of 27
- Called 100.0% of time when present
- Phage (with cluster) where this start called: Alatato\_43 (FB),

Start 14:

- Found in 1 of 45 ( 2.2% ) of genes in pham
- Manual Annotations of this start: 1 of 27
- Called 100.0% of time when present
- Phage (with cluster) where this start called: ChuckDuck\_56 (FA),

Start 15:

- Found in 1 of 45 ( 2.2% ) of genes in pham
- Manual Annotations of this start: 1 of 27
- Called 100.0% of time when present
- Phage (with cluster) where this start called: BruhMoment\_50 (AP3),

Start 16:

- Found in 1 of 45 ( 2.2% ) of genes in pham
- No Manual Annotations of this start.
- Called 100.0% of time when present
- Phage (with cluster) where this start called: Merpity\_45 (FQ),

Start 17:

- Found in 39 of 45 ( 86.7% ) of genes in pham
- Manual Annotations of this start: 24 of 27
- Called 100.0% of time when present
- Phage (with cluster) where this start called: Anekin\_90 (AY), BasketStar\_90 (AY), Beagle\_67 (AP2), BellaJr\_88 (FN), BenchScraper\_90 (AY), BetaFish\_67 (AP2), Crescenzo\_93 (AY), DarwinJr\_94 (AY), DogYard\_66 (AP2), Faja\_91 (AY), Forrestell\_66 (AP2), Globfish\_90 (AY), Gorpy\_88 (AY), Hive\_63 (AP2), Isolde\_91 (AY), Kubulix\_67 (AP2), MUWow\_92 (AY), Mapleville\_84 (AY), MellowYellow\_67 (AP2), MidnightRain\_97 (AY), NewKitty\_91 (AY), Nikan\_65 (AP2), Nyilah\_97 (AY),

NyleyClemson\_66 (AP2), Odyssey395\_67 (AP2), Ollypop\_63 (AP2), Persistence\_85 (AY), PhuzzTulsa\_64 (AP2), Pointis\_64 (AP2), Popstraw\_62 (AP2), Pureglobe5\_66 (AP2), RIPWilbur\_66 (AP2), Ranunculus\_59 (AP), RazzB\_66 (AP2), Ren19\_61 (AP2), Richie\_93 (AY), Sakai\_87 (AY), Seahorse\_96 (AY), SpicyFrank\_92 (AY),

Start 20:

- Found in 1 of 45 ( 2.2% ) of genes in pham
- No Manual Annotations of this start.
- Called 100.0% of time when present
- Phage (with cluster) where this start called: AirForce1\_76 (FL),

Start 22:

- Found in 1 of 45 ( 2.2% ) of genes in pham
- No Manual Annotations of this start.
- Called 100.0% of time when present
- Phage (with cluster) where this start called: Shukran\_58 (AY),

### **Summary by clusters:**

There are 9 clusters represented in this pham: FQ, FA, AP2, AP3, AP, FB, AY, FL, FN,

Info for manual annotations of cluster AP:

- Start number 17 was manually annotated 1 time for cluster AP.

Info for manual annotations of cluster AP2:

- Start number 17 was manually annotated 10 times for cluster AP2.

Info for manual annotations of cluster AP3:

- Start number 15 was manually annotated 1 time for cluster AP3.

Info for manual annotations of cluster AY:

- Start number 17 was manually annotated 13 times for cluster AY.

Info for manual annotations of cluster FA:

- Start number 14 was manually annotated 1 time for cluster FA.

Info for manual annotations of cluster FB:

- Start number 12 was manually annotated 1 time for cluster FB.

### **Gene Information:**

Gene: AirForce1\_76 Start: 43771, Stop: 44016, Start Num: 20

Candidate Starts for AirForce1\_76:

(20, 43771),

Gene: Alatato\_43 Start: 27741, Stop: 28007, Start Num: 12

Candidate Starts for Alatato\_43:

(7, 27651), (Start: 12 @27741 has 1 MA's), (33, 27906), (35, 27918), (36, 27921),

Gene: Anekin\_90 Start: 50152, Stop: 50415, Start Num: 17

Candidate Starts for Anekin\_90:

(Start: 17 @50152 has 24 MA's), (30, 50278), (39, 50356), (43, 50377),

Gene: BasketStar\_90 Start: 49766, Stop: 50035, Start Num: 17

Candidate Starts for BasketStar\_90:

(Start: 17 @49766 has 24 MA's), (30, 49886), (34, 49931), (44, 49991), (48, 50021),

Gene: Beagle\_67 Start: 42365, Stop: 42090, Start Num: 17

Candidate Starts for Beagle\_67:

(Start: 17 @42365 has 24 MA's), (21, 42329), (25, 42272), (38, 42164), (40, 42149),

Gene: BellaJr\_88 Start: 49498, Stop: 49731, Start Num: 17

Candidate Starts for BellaJr\_88:

(1, 49054), (2, 49069), (3, 49138), (Start: 17 @49498 has 24 MA's), (29, 49594), (32, 49642), (48, 49717),

Gene: BenchScraper\_90 Start: 48171, Stop: 48425, Start Num: 17

Candidate Starts for BenchScraper\_90:

(Start: 17 @48171 has 24 MA's), (48, 48411),

Gene: BetaFish\_67 Start: 43321, Stop: 43055, Start Num: 17

Candidate Starts for BetaFish\_67:

(Start: 17 @43321 has 24 MA's), (21, 43285), (25, 43228), (29, 43207), (38, 43120), (40, 43105),

Gene: BruhMoment\_50 Start: 39910, Stop: 39683, Start Num: 15

Candidate Starts for BruhMoment\_50:

(13, 39913), (Start: 15 @39910 has 1 MA's), (23, 39862), (26, 39817), (27, 39814),

Gene: ChuckDuck\_56 Start: 35927, Stop: 36187, Start Num: 14

Candidate Starts for ChuckDuck\_56:

(4, 35687), (7, 35813), (Start: 14 @35927 has 1 MA's), (24, 35990), (28, 36023), (35, 36098), (36, 36101),

Gene: Crescenzo\_93 Start: 51175, Stop: 51429, Start Num: 17

Candidate Starts for Crescenzo\_93:

(Start: 17 @51175 has 24 MA's), (33, 51340), (48, 51415),

Gene: DarwinJr\_94 Start: 51289, Stop: 51558, Start Num: 17

Candidate Starts for DarwinJr\_94:

(Start: 17 @51289 has 24 MA's), (30, 51409), (34, 51454), (44, 51514), (48, 51544),

Gene: DogYard\_66 Start: 42560, Stop: 42288, Start Num: 17

Candidate Starts for DogYard\_66:

(Start: 17 @42560 has 24 MA's), (21, 42524), (29, 42446),

Gene: Faja\_91 Start: 50148, Stop: 50402, Start Num: 17

Candidate Starts for Faja\_91:

(Start: 17 @50148 has 24 MA's), (24, 50187), (35, 50298), (37, 50304), (41, 50328),

Gene: Forrestell\_66 Start: 41892, Stop: 41626, Start Num: 17

Candidate Starts for Forrestell\_66:

(Start: 17 @41892 has 24 MA's), (21, 41856), (25, 41799), (29, 41778), (40, 41676), (42, 41673), (48, 41640),

Gene: Globfish\_90 Start: 48891, Stop: 49145, Start Num: 17

Candidate Starts for Globfish\_90:

(Start: 17 @48891 has 24 MA's), (35, 49041), (37, 49047), (41, 49071),

Gene: Gorpy\_88 Start: 50899, Stop: 51153, Start Num: 17

Candidate Starts for Gorpy\_88:

(Start: 17 @50899 has 24 MA's), (33, 51064), (48, 51139),

Gene: Hive\_63 Start: 42585, Stop: 42313, Start Num: 17

Candidate Starts for Hive\_63:

(Start: 17 @42585 has 24 MA's), (21, 42549), (25, 42492), (38, 42384), (40, 42369),

Gene: Isolde\_91 Start: 50741, Stop: 51010, Start Num: 17

Candidate Starts for Isolde\_91:

(Start: 17 @50741 has 24 MA's), (30, 50861), (34, 50906), (44, 50966), (48, 50996),

Gene: Kubulix\_67 Start: 42478, Stop: 42203, Start Num: 17

Candidate Starts for Kubulix\_67:

(Start: 17 @42478 has 24 MA's), (21, 42442), (25, 42385), (38, 42277), (40, 42262),

Gene: MUWow\_92 Start: 50937, Stop: 51179, Start Num: 17

Candidate Starts for MUWow\_92:

(Start: 17 @50937 has 24 MA's), (24, 50973), (41, 51117), (45, 51141),

Gene: Mapleville\_84 Start: 48385, Stop: 48639, Start Num: 17

Candidate Starts for Mapleville\_84:

(Start: 17 @48385 has 24 MA's), (33, 48550), (48, 48625),

Gene: MellowYellow\_67 Start: 42565, Stop: 42293, Start Num: 17

Candidate Starts for MellowYellow\_67:

(Start: 17 @42565 has 24 MA's), (21, 42529), (25, 42472), (38, 42364), (40, 42349),

Gene: Merpity\_45 Start: 28400, Stop: 28615, Start Num: 16

Candidate Starts for Merpity\_45:

(11, 28382), (16, 28400), (18, 28418),

Gene: MidnightRain\_97 Start: 51392, Stop: 51628, Start Num: 17

Candidate Starts for MidnightRain\_97:

(Start: 17 @51392 has 24 MA's), (24, 51431), (35, 51536), (36, 51539),

Gene: NewKitty\_91 Start: 50380, Stop: 50622, Start Num: 17

Candidate Starts for NewKitty\_91:

(Start: 17 @50380 has 24 MA's), (24, 50416), (41, 50560), (45, 50584),

Gene: Nikan\_65 Start: 42436, Stop: 42206, Start Num: 17

Candidate Starts for Nikan\_65:

(Start: 17 @42436 has 24 MA's), (31, 42328),

Gene: Nyilah\_97 Start: 49853, Stop: 50107, Start Num: 17

Candidate Starts for Nyilah\_97:

(Start: 17 @49853 has 24 MA's), (33, 50018), (48, 50093),

Gene: NyleyClemson\_66 Start: 42180, Stop: 41908, Start Num: 17

Candidate Starts for NyleyClemson\_66:

(Start: 17 @42180 has 24 MA's), (21, 42144), (25, 42087), (38, 41979), (40, 41964),

Gene: Odyssey395\_67 Start: 42602, Stop: 42327, Start Num: 17

Candidate Starts for Odyssey395\_67:

(Start: 17 @42602 has 24 MA's), (21, 42566), (38, 42401), (40, 42386),

Gene: Ollypop\_63 Start: 43106, Stop: 42852, Start Num: 17

Candidate Starts for Ollypop\_63:

(Start: 17 @43106 has 24 MA's), (21, 43070), (25, 43028), (38, 42923), (40, 42908),

Gene: Persistence\_85 Start: 47551, Stop: 47787, Start Num: 17

Candidate Starts for Persistence\_85:

(Start: 17 @47551 has 24 MA's), (44, 47743), (46, 47749), (47, 47764),

Gene: PhuzzTulsa\_64 Start: 42826, Stop: 42554, Start Num: 17

Candidate Starts for PhuzzTulsa\_64:

(Start: 17 @42826 has 24 MA's), (21, 42790), (25, 42733), (38, 42625), (40, 42610),

Gene: Pointis\_64 Start: 42405, Stop: 42130, Start Num: 17

Candidate Starts for Pointis\_64:

(Start: 17 @42405 has 24 MA's), (21, 42369), (25, 42312), (38, 42204), (40, 42189),

Gene: Popstraw\_62 Start: 42319, Stop: 42047, Start Num: 17

Candidate Starts for Popstraw\_62:

(Start: 17 @42319 has 24 MA's), (21, 42283), (29, 42205),

Gene: Pureglobe5\_66 Start: 42849, Stop: 42574, Start Num: 17

Candidate Starts for Pureglobe5\_66:

(Start: 17 @42849 has 24 MA's), (21, 42813), (29, 42735), (38, 42648), (40, 42633),

Gene: RIPWilbur\_66 Start: 42443, Stop: 42171, Start Num: 17

Candidate Starts for RIPWilbur\_66:

(Start: 17 @42443 has 24 MA's), (21, 42407), (25, 42350), (38, 42242), (40, 42227),

Gene: Ranunculus\_59 Start: 44856, Stop: 44584, Start Num: 17

Candidate Starts for Ranunculus\_59:

(5, 45054), (Start: 17 @44856 has 24 MA's), (21, 44820), (25, 44763), (29, 44742),

Gene: RazzB\_66 Start: 42311, Stop: 42039, Start Num: 17

Candidate Starts for RazzB\_66:

(Start: 17 @42311 has 24 MA's), (21, 42275), (25, 42218), (38, 42110), (40, 42095),

Gene: Ren19\_61 Start: 42043, Stop: 41816, Start Num: 17

Candidate Starts for Ren19\_61:

(8, 42118), (9, 42091), (Start: 17 @42043 has 24 MA's), (31, 41935),

Gene: Richie\_93 Start: 50743, Stop: 50997, Start Num: 17

Candidate Starts for Richie\_93:

(Start: 17 @50743 has 24 MA's), (33, 50908), (48, 50983),

Gene: Sakai\_87 Start: 49610, Stop: 49864, Start Num: 17

Candidate Starts for Sakai\_87:

(Start: 17 @49610 has 24 MA's), (33, 49775), (48, 49850),

Gene: Seahorse\_96 Start: 54256, Stop: 54510, Start Num: 17

Candidate Starts for Seahorse\_96:

(Start: 17 @54256 has 24 MA's), (33, 54421), (48, 54496),

Gene: Shukran\_58 Start: 32719, Stop: 32940, Start Num: 22

Candidate Starts for Shukran\_58:

(6, 32485), (10, 32641), (19, 32689), (22, 32719), (36, 32851),

Gene: SpicyFrank\_92 Start: 49662, Stop: 49916, Start Num: 17

Candidate Starts for SpicyFrank\_92:

(Start: 17 @49662 has 24 MA's), (35, 49812), (37, 49818), (41, 49842),