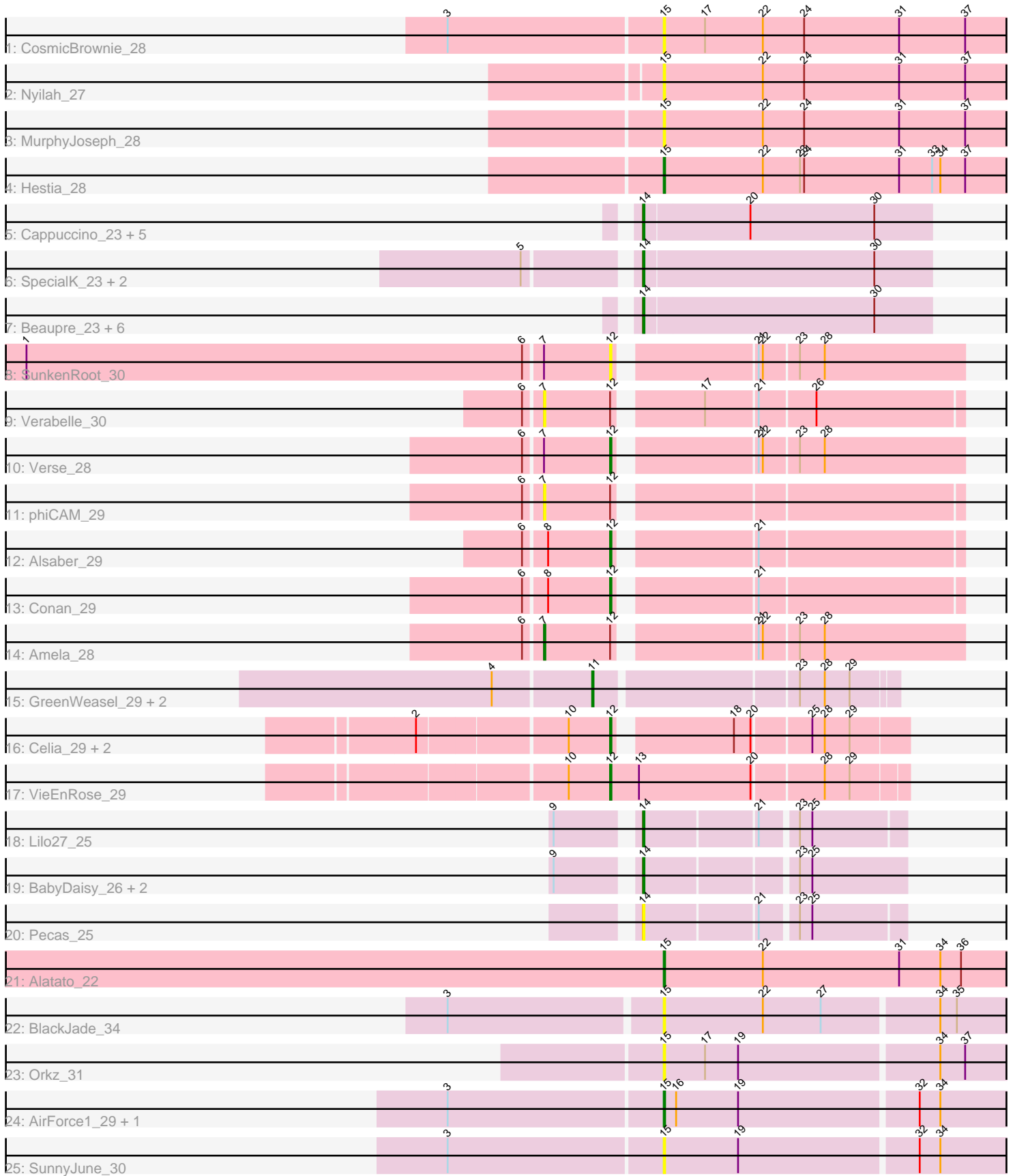


# Pham 294853



Note: Tracks are now grouped by subcluster and scaled. Switching in subcluster is indicated by changes in track color. Track scale is now set by default to display the region 30 bp upstream of start 1 to 30 bp downstream of the last possible start. If this default region is judged to be packed too tightly with annotated starts, the track will be further scaled to only show that region of the ORF with annotated starts. This action will be indicated by adding "Zoomed" to the title. For starts, yellow indicates the location of called starts comprised solely of Glimmer/GeneMark auto-annotations, green indicates the location of called starts with at least 1 manual gene annotation.

## Pham 294853 Report

This analysis was run 04/18/26 on database version 643.

Pham number 294853 has 45 members, 11 are drafts.

Phages represented in each track:

- Track 1 : CosmicBrownie\_28
- Track 2 : Nyilah\_27
- Track 3 : MurphyJoseph\_28
- Track 4 : Hestia\_28
- Track 5 : Cappuccino\_23, Sabourin\_23, Sooty\_23, Kalimba\_23, Gambol\_23, Donkey\_23
- Track 6 : SpecialK\_23, Halsey\_23, Moss\_23
- Track 7 : Beaupre\_23, Stuu\_23, Gumpizza\_23, Ashes\_23, Giorgio\_23, RockScotty\_23, Mysterium\_23
- Track 8 : SunkenRoot\_30
- Track 9 : Verabelle\_30
- Track 10 : Verse\_28
- Track 11 : phiCAM\_29
- Track 12 : Alsaber\_29
- Track 13 : Conan\_29
- Track 14 : Amela\_28
- Track 15 : GreenWeasel\_29, BroPlease\_28, phiHau3\_29
- Track 16 : Celia\_29, Itza\_29, Urza\_29
- Track 17 : VieEnRose\_29
- Track 18 : Lilo27\_25
- Track 19 : BabyDaisy\_26, Finalfrontier\_26, Kate33\_25
- Track 20 : Pecas\_25
- Track 21 : Alatato\_22
- Track 22 : BlackJade\_34
- Track 23 : Orkz\_31
- Track 24 : AirForce1\_29, Jinkies\_31
- Track 25 : SunnyJune\_30

### ***Summary of Final Annotations (See graph section above for start numbers):***

The start number called the most often in the published annotations is 14, it was called in 20 of the 34 non-draft genes in the pham.

Genes that call this "Most Annotated" start:

- Ashes\_23, BabyDaisy\_26, Beaupre\_23, Cappuccino\_23, Donkey\_23, Finalfrontier\_26, Gambol\_23, Giorgio\_23, Gumpizza\_23, Halsey\_23, Kalimba\_23, Kate33\_25, Lilo27\_25, Moss\_23, Mysterium\_23, Pecas\_25, RockScotty\_23, Sabourin\_23, Sooty\_23, SpecialK\_23, Stuu\_23,

Genes that have the "Most Annotated" start but do not call it:

- 

Genes that do not have the "Most Annotated" start:

- AirForce1\_29, Alatato\_22, Alsaber\_29, Amela\_28, BlackJade\_34, BroPlease\_28, Celia\_29, Conan\_29, CosmicBrownie\_28, GreenWeasel\_29, Hestia\_28, Itza\_29, Jinkies\_31, MurphyJoseph\_28, Nyilah\_27, Orkz\_31, SunkenRoot\_30, SunnyJune\_30, Urza\_29, Verabelle\_30, Verse\_28, VieEnRose\_29, phiCAM\_29, phiHau3\_29,

### Summary by start number:

Start 7:

- Found in 5 of 45 ( 11.1% ) of genes in pham
- Manual Annotations of this start: 1 of 34
- Called 60.0% of time when present
- Phage (with cluster) where this start called: Amela\_28 (BD3), Verabelle\_30 (BD3), phiCAM\_29 (BD3),

Start 11:

- Found in 3 of 45 ( 6.7% ) of genes in pham
- Manual Annotations of this start: 3 of 34
- Called 100.0% of time when present
- Phage (with cluster) where this start called: BroPlease\_28 (BD4), GreenWeasel\_29 (BD4), phiHau3\_29 (BD4),

Start 12:

- Found in 11 of 45 ( 24.4% ) of genes in pham
- Manual Annotations of this start: 7 of 34
- Called 72.7% of time when present
- Phage (with cluster) where this start called: Alsaber\_29 (BD3), Celia\_29 (BD6), Conan\_29 (BD3), Itza\_29 (BD6), SunkenRoot\_30 (BD3), Urza\_29 (BD6), Verse\_28 (BD3), VieEnRose\_29 (BD6),

Start 14:

- Found in 21 of 45 ( 46.7% ) of genes in pham
- Manual Annotations of this start: 20 of 34
- Called 100.0% of time when present
- Phage (with cluster) where this start called: Ashes\_23 (AZ5), BabyDaisy\_26 (EB), Beaupre\_23 (AZ5), Cappuccino\_23 (AZ5), Donkey\_23 (AZ5), Finalfrontier\_26 (EB), Gambol\_23 (AZ5), Giorgio\_23 (AZ5), Gumpizza\_23 (AZ5), Halsey\_23 (AZ5), Kalimba\_23 (AZ5), Kate33\_25 (EB), Lilo27\_25 (EB), Moss\_23 (AZ5), Mysterium\_23 (AZ5), Pecas\_25 (EB), RockScotty\_23 (AZ5), Sabourin\_23 (AZ5), Sooty\_23 (AZ5), SpecialK\_23 (AZ5), Stuu\_23 (AZ5),

Start 15:

- Found in 10 of 45 ( 22.2% ) of genes in pham
- Manual Annotations of this start: 3 of 34

- Called 100.0% of time when present
- Phage (with cluster) where this start called: AirForce1\_29 (FL), Alatato\_22 (FB), BlackJade\_34 (FL), CosmicBrownie\_28 (AY), Hestia\_28 (AY), Jinkies\_31 (FL), MurphyJoseph\_28 (AY), Nyilah\_27 (AY), Orkz\_31 (FL), SunnyJune\_30 (FL),

### **Summary by clusters:**

There are 8 clusters represented in this pham: EB, BD4, FB, BD6, BD3, AY, FL, AZ5,

Info for manual annotations of cluster AY:

- Start number 15 was manually annotated 1 time for cluster AY.

Info for manual annotations of cluster AZ5:

- Start number 14 was manually annotated 16 times for cluster AZ5.

Info for manual annotations of cluster BD3:

- Start number 7 was manually annotated 1 time for cluster BD3.
- Start number 12 was manually annotated 3 times for cluster BD3.

Info for manual annotations of cluster BD4:

- Start number 11 was manually annotated 3 times for cluster BD4.

Info for manual annotations of cluster BD6:

- Start number 12 was manually annotated 4 times for cluster BD6.

Info for manual annotations of cluster EB:

- Start number 14 was manually annotated 4 times for cluster EB.

Info for manual annotations of cluster FB:

- Start number 15 was manually annotated 1 time for cluster FB.

Info for manual annotations of cluster FL:

- Start number 15 was manually annotated 1 time for cluster FL.

### **Gene Information:**

Gene: AirForce1\_29 Start: 22259, Stop: 22513, Start Num: 15

Candidate Starts for AirForce1\_29:

(3, 22106), (Start: 15 @22259 has 3 MA's), (16, 22268), (19, 22313), (32, 22439), (34, 22454),

Gene: Alatato\_22 Start: 17463, Stop: 17723, Start Num: 15

Candidate Starts for Alatato\_22:

(Start: 15 @17463 has 3 MA's), (22, 17535), (31, 17634), (34, 17664), (36, 17679),

Gene: Alsaber\_29 Start: 23589, Stop: 23822, Start Num: 12

Candidate Starts for Alsaber\_29:

(6, 23529), (8, 23544), (Start: 12 @23589 has 7 MA's), (21, 23679),

Gene: Amela\_28 Start: 24358, Stop: 24642, Start Num: 7

Candidate Starts for Amela\_28:

(6, 24346), (Start: 7 @24358 has 1 MA's), (Start: 12 @24406 has 7 MA's), (21, 24496), (22, 24499), (23, 24523), (28, 24541),

Gene: Ashes\_23 Start: 18268, Stop: 18474, Start Num: 14  
Candidate Starts for Ashes\_23:  
(Start: 14 @18268 has 20 MA's), (30, 18433),

Gene: BabyDaisy\_26 Start: 19813, Stop: 19992, Start Num: 14  
Candidate Starts for BabyDaisy\_26:  
(9, 19762), (Start: 14 @19813 has 20 MA's), (23, 19915), (25, 19924),

Gene: Beaupre\_23 Start: 18269, Stop: 18475, Start Num: 14  
Candidate Starts for Beaupre\_23:  
(Start: 14 @18269 has 20 MA's), (30, 18434),

Gene: BlackJade\_34 Start: 24870, Stop: 25124, Start Num: 15  
Candidate Starts for BlackJade\_34:  
(3, 24720), (Start: 15 @24870 has 3 MA's), (22, 24942), (27, 24984), (34, 25065), (35, 25077),

Gene: BroPlease\_28 Start: 22457, Stop: 22663, Start Num: 11  
Candidate Starts for BroPlease\_28:  
(4, 22388), (Start: 11 @22457 has 3 MA's), (23, 22595), (28, 22613), (29, 22631),

Gene: Cappuccino\_23 Start: 18179, Stop: 18385, Start Num: 14  
Candidate Starts for Cappuccino\_23:  
(Start: 14 @18179 has 20 MA's), (20, 18254), (30, 18344),

Gene: Celia\_29 Start: 23000, Stop: 23194, Start Num: 12  
Candidate Starts for Celia\_29:  
(2, 22868), (10, 22970), (Start: 12 @23000 has 7 MA's), (18, 23075), (20, 23087), (25, 23126), (28, 23135), (29, 23153),

Gene: Conan\_29 Start: 23488, Stop: 23721, Start Num: 12  
Candidate Starts for Conan\_29:  
(6, 23428), (8, 23443), (Start: 12 @23488 has 7 MA's), (21, 23578),

Gene: CosmicBrownie\_28 Start: 20183, Stop: 20443, Start Num: 15  
Candidate Starts for CosmicBrownie\_28:  
(3, 20030), (Start: 15 @20183 has 3 MA's), (17, 20213), (22, 20255), (24, 20285), (31, 20354), (37, 20402),

Gene: Donkey\_23 Start: 18179, Stop: 18385, Start Num: 14  
Candidate Starts for Donkey\_23:  
(Start: 14 @18179 has 20 MA's), (20, 18254), (30, 18344),

Gene: Finalfrontier\_26 Start: 20179, Stop: 20358, Start Num: 14  
Candidate Starts for Finalfrontier\_26:  
(9, 20128), (Start: 14 @20179 has 20 MA's), (23, 20281), (25, 20290),

Gene: Gambol\_23 Start: 18179, Stop: 18385, Start Num: 14  
Candidate Starts for Gambol\_23:  
(Start: 14 @18179 has 20 MA's), (20, 18254), (30, 18344),

Gene: Giorgio\_23 Start: 18276, Stop: 18482, Start Num: 14

Candidate Starts for Giorgio\_23:

(Start: 14 @18276 has 20 MA's), (30, 18441),

Gene: GreenWeasel\_29 Start: 22466, Stop: 22672, Start Num: 11

Candidate Starts for GreenWeasel\_29:

(4, 22397), (Start: 11 @22466 has 3 MA's), (23, 22604), (28, 22622), (29, 22640),

Gene: Gumpizza\_23 Start: 18269, Stop: 18475, Start Num: 14

Candidate Starts for Gumpizza\_23:

(Start: 14 @18269 has 20 MA's), (30, 18434),

Gene: Halsey\_23 Start: 18274, Stop: 18480, Start Num: 14

Candidate Starts for Halsey\_23:

(5, 18202), (Start: 14 @18274 has 20 MA's), (30, 18439),

Gene: Hestia\_28 Start: 20403, Stop: 20663, Start Num: 15

Candidate Starts for Hestia\_28:

(Start: 15 @20403 has 3 MA's), (22, 20475), (23, 20502), (24, 20505), (31, 20574), (33, 20598), (34, 20604), (37, 20622),

Gene: Itza\_29 Start: 22914, Stop: 23108, Start Num: 12

Candidate Starts for Itza\_29:

(2, 22782), (10, 22884), (Start: 12 @22914 has 7 MA's), (18, 22989), (20, 23001), (25, 23040), (28, 23049), (29, 23067),

Gene: Jinkies\_31 Start: 24736, Stop: 24990, Start Num: 15

Candidate Starts for Jinkies\_31:

(3, 24583), (Start: 15 @24736 has 3 MA's), (16, 24745), (19, 24790), (32, 24916), (34, 24931),

Gene: Kalimba\_23 Start: 18180, Stop: 18386, Start Num: 14

Candidate Starts for Kalimba\_23:

(Start: 14 @18180 has 20 MA's), (20, 18255), (30, 18345),

Gene: Kate33\_25 Start: 19636, Stop: 19815, Start Num: 14

Candidate Starts for Kate33\_25:

(9, 19585), (Start: 14 @19636 has 20 MA's), (23, 19738), (25, 19747),

Gene: Lilo27\_25 Start: 19648, Stop: 19824, Start Num: 14

Candidate Starts for Lilo27\_25:

(9, 19597), (Start: 14 @19648 has 20 MA's), (21, 19726), (23, 19750), (25, 19759),

Gene: Moss\_23 Start: 18269, Stop: 18475, Start Num: 14

Candidate Starts for Moss\_23:

(5, 18197), (Start: 14 @18269 has 20 MA's), (30, 18434),

Gene: MurphyJoseph\_28 Start: 20309, Stop: 20569, Start Num: 15

Candidate Starts for MurphyJoseph\_28:

(Start: 15 @20309 has 3 MA's), (22, 20381), (24, 20411), (31, 20480), (37, 20528),

Gene: Mysterium\_23 Start: 18269, Stop: 18475, Start Num: 14

Candidate Starts for Mysterium\_23:

(Start: 14 @18269 has 20 MA's), (30, 18434),

Gene: Nyilah\_27 Start: 20212, Stop: 20472, Start Num: 15

Candidate Starts for Nyilah\_27:

(Start: 15 @20212 has 3 MA's), (22, 20284), (24, 20314), (31, 20383), (37, 20431),

Gene: Orkz\_31 Start: 21461, Stop: 21715, Start Num: 15

Candidate Starts for Orkz\_31:

(Start: 15 @21461 has 3 MA's), (17, 21491), (19, 21515), (34, 21656), (37, 21674),

Gene: Pecas\_25 Start: 19672, Stop: 19848, Start Num: 14

Candidate Starts for Pecas\_25:

(Start: 14 @19672 has 20 MA's), (21, 19750), (23, 19774), (25, 19783),

Gene: RockScotty\_23 Start: 18245, Stop: 18451, Start Num: 14

Candidate Starts for RockScotty\_23:

(Start: 14 @18245 has 20 MA's), (30, 18410),

Gene: Sabourin\_23 Start: 18178, Stop: 18384, Start Num: 14

Candidate Starts for Sabourin\_23:

(Start: 14 @18178 has 20 MA's), (20, 18253), (30, 18343),

Gene: Sooty\_23 Start: 18181, Stop: 18387, Start Num: 14

Candidate Starts for Sooty\_23:

(Start: 14 @18181 has 20 MA's), (20, 18256), (30, 18346),

Gene: SpecialK\_23 Start: 18176, Stop: 18382, Start Num: 14

Candidate Starts for SpecialK\_23:

(5, 18104), (Start: 14 @18176 has 20 MA's), (30, 18341),

Gene: Stuu\_23 Start: 18268, Stop: 18474, Start Num: 14

Candidate Starts for Stuu\_23:

(Start: 14 @18268 has 20 MA's), (30, 18433),

Gene: SunkenRoot\_30 Start: 24203, Stop: 24439, Start Num: 12

Candidate Starts for SunkenRoot\_30:

(1, 23783), (6, 24143), (Start: 7 @24155 has 1 MA's), (Start: 12 @24203 has 7 MA's), (21, 24293), (22, 24296), (23, 24320), (28, 24338),

Gene: SunnyJune\_30 Start: 23435, Stop: 23689, Start Num: 15

Candidate Starts for SunnyJune\_30:

(3, 23282), (Start: 15 @23435 has 3 MA's), (19, 23489), (32, 23615), (34, 23630),

Gene: Urza\_29 Start: 22935, Stop: 23129, Start Num: 12

Candidate Starts for Urza\_29:

(2, 22803), (10, 22905), (Start: 12 @22935 has 7 MA's), (18, 23010), (20, 23022), (25, 23061), (28, 23070), (29, 23088),

Gene: Verabelle\_30 Start: 23699, Stop: 23980, Start Num: 7

Candidate Starts for Verabelle\_30:

(6, 23687), (Start: 7 @23699 has 1 MA's), (Start: 12 @23747 has 7 MA's), (17, 23801), (21, 23837), (26, 23876),

Gene: Verse\_28 Start: 24400, Stop: 24636, Start Num: 12

Candidate Starts for Verse\_28:

(6, 24340), (Start: 7 @24352 has 1 MA's), (Start: 12 @24400 has 7 MA's), (21, 24490), (22, 24493), (23, 24517), (28, 24535),

Gene: VieEnRose\_29 Start: 23003, Stop: 23209, Start Num: 12

Candidate Starts for VieEnRose\_29:

(10, 22973), (Start: 12 @23003 has 7 MA's), (13, 23024), (20, 23105), (28, 23153), (29, 23171),

Gene: phiCAM\_29 Start: 25497, Stop: 25778, Start Num: 7

Candidate Starts for phiCAM\_29:

(6, 25485), (Start: 7 @25497 has 1 MA's), (Start: 12 @25545 has 7 MA's),

Gene: phiHau3\_29 Start: 22430, Stop: 22636, Start Num: 11

Candidate Starts for phiHau3\_29:

(4, 22361), (Start: 11 @22430 has 3 MA's), (23, 22568), (28, 22586), (29, 22604),