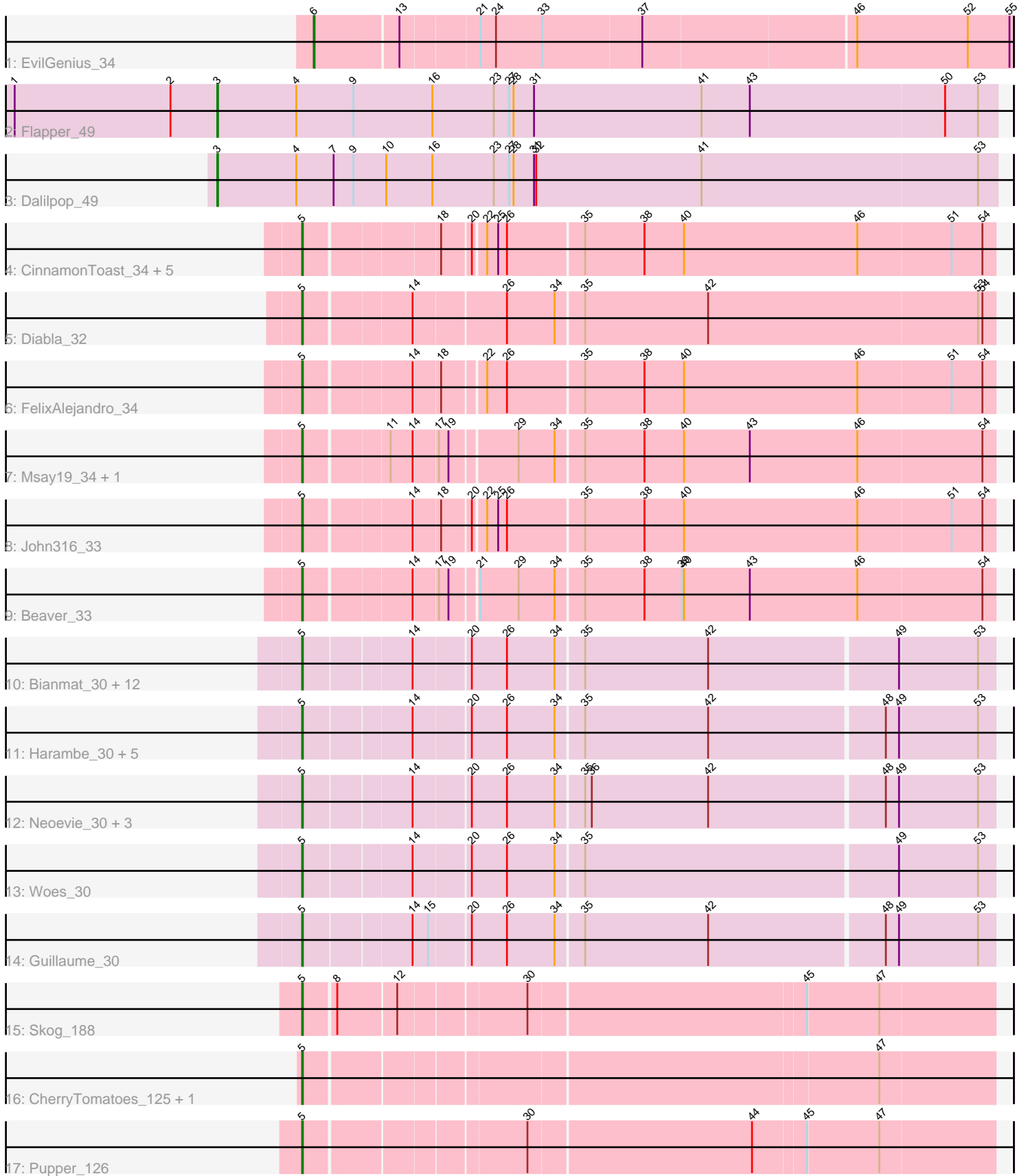


Pham 294858



Note: Tracks are now grouped by subcluster and scaled. Switching in subcluster is indicated by changes in track color. Track scale is now set by default to display the region 30 bp upstream of start 1 to 30 bp downstream of the last possible start. If this default region is judged to be packed too tightly with annotated starts, the track will be further scaled to only show that region of the ORF with annotated starts. This action will be indicated by adding "Zoomed" to the title. For starts, yellow indicates the location of called starts comprised solely of Glimmer/GeneMark auto-annotations, green indicates the location of called starts with at least 1 manual gene annotation.

Pham 294858 Report

This analysis was run 04/18/26 on database version 643.

Pham number 294858 has 44 members, 2 are drafts.

Phages represented in each track:

- Track 1 : EvilGenius_34
- Track 2 : Flapper_49
- Track 3 : Dalilpop_49
- Track 4 : CinnamonToast_34, Boneham_33, Jellybones_33, Butterball_33, BirksAndSocks_33, BillyBobJr_34
- Track 5 : Diabla_32
- Track 6 : FelixAlejandro_34
- Track 7 : Msay19_34, Poland_34
- Track 8 : John316_33
- Track 9 : Beaver_33
- Track 10 : Bianmat_30, Jams_30, Kaseim_30, GalacticEye_30, Minos_31, Lidong_30, Charianelly_30, Shelley_30, Teal_30, Newt_31, Berries_30, Hello_30, MrWormie_30
- Track 11 : Harambe_30, Lahirium_30, Jormungandr_30, Sticker17_30, Damp_30, Luker_31
- Track 12 : Neoevie_30, Anamika_30, Nimi13_30, Hail2Pitt_30
- Track 13 : Woes_30
- Track 14 : Guillaume_30
- Track 15 : Skog_188
- Track 16 : CherryTomatoes_125, SCentae_125
- Track 17 : Pupper_126

Summary of Final Annotations (See graph section above for start numbers):

The start number called the most often in the published annotations is 5, it was called in 39 of the 42 non-draft genes in the pham.

Genes that call this "Most Annotated" start:

- Anamika_30, Beaver_33, Berries_30, Bianmat_30, BillyBobJr_34, BirksAndSocks_33, Boneham_33, Butterball_33, Charianelly_30, CherryTomatoes_125, CinnamonToast_34, Damp_30, Diabla_32, FelixAlejandro_34, GalacticEye_30, Guillaume_30, Hail2Pitt_30, Harambe_30, Hello_30, Jams_30, Jellybones_33, John316_33, Jormungandr_30, Kaseim_30, Lahirium_30, Lidong_30, Luker_31, Minos_31, MrWormie_30, Msay19_34, Neoevie_30, Newt_31, Nimi13_30,

Poland_34, Pupper_126, SCentae_125, Shelley_30, Skog_188, Sticker17_30, Teal_30, Woes_30,

Genes that have the "Most Annotated" start but do not call it:

-

Genes that do not have the "Most Annotated" start:

- Dalilpop_49, EvilGenius_34, Flapper_49,

Summary by start number:

Start 3:

- Found in 2 of 44 (4.5%) of genes in pham
- Manual Annotations of this start: 2 of 42
- Called 100.0% of time when present
- Phage (with cluster) where this start called: Dalilpop_49 (CR1), Flapper_49 (CR1),

Start 5:

- Found in 41 of 44 (93.2%) of genes in pham
- Manual Annotations of this start: 39 of 42
- Called 100.0% of time when present
- Phage (with cluster) where this start called: Anamika_30 (CS3), Beaver_33 (CS2), Berries_30 (CS3), Bianmat_30 (CS3), BillyBobJr_34 (CS2), BirksAndSocks_33 (CS2), Boneham_33 (CS2), Butterball_33 (CS2), Charianelly_30 (CS3), CherryTomatoes_125 (DO), CinnamonToast_34 (CS2), Damp_30 (CS3), Diabla_32 (CS2), FelixAlejandro_34 (CS2), GalacticEye_30 (CS3), Guillaume_30 (CS3), Hail2Pitt_30 (CS3), Harambe_30 (CS3), Hello_30 (CS3), Jams_30 (CS3), Jellybones_33 (CS2), John316_33 (CS2), Jormungandr_30 (CS3), Kaseim_30 (CS3), Lahirium_30 (CS3), Lidong_30 (CS3), Luker_31 (CS3), Minos_31 (CS3), MrWormie_30 (CS3), Msay19_34 (CS2), Neoevie_30 (CS3), Newt_31 (CS3), Nimi13_30 (CS3), Poland_34 (CS2), Pupper_126 (DO), SCentae_125 (DO), Shelley_30 (CS3), Skog_188 (DO), Sticker17_30 (CS3), Teal_30 (CS3), Woes_30 (CS3),

Start 6:

- Found in 1 of 44 (2.3%) of genes in pham
- Manual Annotations of this start: 1 of 42
- Called 100.0% of time when present
- Phage (with cluster) where this start called: EvilGenius_34 (A2),

Summary by clusters:

There are 5 clusters represented in this pham: DO, CR1, A2, CS3, CS2,

Info for manual annotations of cluster A2:

- Start number 6 was manually annotated 1 time for cluster A2.

Info for manual annotations of cluster CR1:

- Start number 3 was manually annotated 2 times for cluster CR1.

Info for manual annotations of cluster CS2:

- Start number 5 was manually annotated 10 times for cluster CS2.

Info for manual annotations of cluster CS3:

- Start number 5 was manually annotated 25 times for cluster CS3.

Info for manual annotations of cluster DO:

- Start number 5 was manually annotated 4 times for cluster DO.

Gene Information:

Gene: Anamika_30 Start: 38386, Stop: 39288, Start Num: 5

Candidate Starts for Anamika_30:

(Start: 5 @38386 has 39 MA's), (14, 38524), (20, 38593), (26, 38641), (34, 38704), (35, 38740), (36, 38749), (42, 38908), (48, 39142), (49, 39160), (53, 39265),

Gene: Beaver_33 Start: 37866, Stop: 38768, Start Num: 5

Candidate Starts for Beaver_33:

(Start: 5 @37866 has 39 MA's), (14, 38001), (17, 38031), (19, 38043), (21, 38076), (29, 38127), (34, 38175), (35, 38211), (38, 38292), (39, 38343), (40, 38346), (43, 38436), (46, 38583), (54, 38751),

Gene: Berries_30 Start: 38356, Stop: 39258, Start Num: 5

Candidate Starts for Berries_30:

(Start: 5 @38356 has 39 MA's), (14, 38494), (20, 38563), (26, 38611), (34, 38674), (35, 38710), (42, 38878), (49, 39130), (53, 39235),

Gene: Bianmat_30 Start: 38396, Stop: 39298, Start Num: 5

Candidate Starts for Bianmat_30:

(Start: 5 @38396 has 39 MA's), (14, 38534), (20, 38603), (26, 38651), (34, 38714), (35, 38750), (42, 38918), (49, 39170), (53, 39275),

Gene: BillyBobJr_34 Start: 37893, Stop: 38795, Start Num: 5

Candidate Starts for BillyBobJr_34:

(Start: 5 @37893 has 39 MA's), (18, 38061), (20, 38097), (22, 38112), (25, 38127), (26, 38139), (35, 38238), (38, 38319), (40, 38373), (46, 38610), (51, 38736), (54, 38778),

Gene: BirksAndSocks_33 Start: 37840, Stop: 38742, Start Num: 5

Candidate Starts for BirksAndSocks_33:

(Start: 5 @37840 has 39 MA's), (18, 38008), (20, 38044), (22, 38059), (25, 38074), (26, 38086), (35, 38185), (38, 38266), (40, 38320), (46, 38557), (51, 38683), (54, 38725),

Gene: Boneham_33 Start: 37839, Stop: 38741, Start Num: 5

Candidate Starts for Boneham_33:

(Start: 5 @37839 has 39 MA's), (18, 38007), (20, 38043), (22, 38058), (25, 38073), (26, 38085), (35, 38184), (38, 38265), (40, 38319), (46, 38556), (51, 38682), (54, 38724),

Gene: Butterball_33 Start: 37839, Stop: 38741, Start Num: 5

Candidate Starts for Butterball_33:

(Start: 5 @37839 has 39 MA's), (18, 38007), (20, 38043), (22, 38058), (25, 38073), (26, 38085), (35, 38184), (38, 38265), (40, 38319), (46, 38556), (51, 38682), (54, 38724),

Gene: Charianelly_30 Start: 38106, Stop: 39008, Start Num: 5

Candidate Starts for Charianelly_30:

(Start: 5 @38106 has 39 MA's), (14, 38244), (20, 38313), (26, 38361), (34, 38424), (35, 38460), (42, 38628), (49, 38880), (53, 38985),

Gene: CherryTomatoes_125 Start: 82351, Stop: 83241, Start Num: 5

Candidate Starts for CherryTomatoes_125:

(Start: 5 @82351 has 39 MA's), (47, 83086),

Gene: CinnamonToast_34 Start: 37893, Stop: 38795, Start Num: 5

Candidate Starts for CinnamonToast_34:

(Start: 5 @37893 has 39 MA's), (18, 38061), (20, 38097), (22, 38112), (25, 38127), (26, 38139), (35, 38238), (38, 38319), (40, 38373), (46, 38610), (51, 38736), (54, 38778),

Gene: Dalilpop_49 Start: 37250, Stop: 38311, Start Num: 3

Candidate Starts for Dalilpop_49:

(Start: 3 @37250 has 2 MA's), (4, 37358), (7, 37409), (9, 37436), (10, 37481), (16, 37544), (23, 37628), (27, 37649), (28, 37655), (31, 37682), (32, 37685), (41, 37910), (53, 38285),

Gene: Damp_30 Start: 37270, Stop: 38172, Start Num: 5

Candidate Starts for Damp_30:

(Start: 5 @37270 has 39 MA's), (14, 37408), (20, 37477), (26, 37525), (34, 37588), (35, 37624), (42, 37792), (48, 38026), (49, 38044), (53, 38149),

Gene: Diabla_32 Start: 37690, Stop: 38598, Start Num: 5

Candidate Starts for Diabla_32:

(Start: 5 @37690 has 39 MA's), (14, 37825), (26, 37942), (34, 38005), (35, 38041), (42, 38209), (53, 38575), (54, 38581),

Gene: EvilGenius_34 Start: 25671, Stop: 26591, Start Num: 6

Candidate Starts for EvilGenius_34:

(Start: 6 @25671 has 1 MA's), (13, 25779), (21, 25881), (24, 25902), (33, 25965), (37, 26097), (46, 26379), (52, 26529), (55, 26586),

Gene: FelixAlejandro_34 Start: 38037, Stop: 38939, Start Num: 5

Candidate Starts for FelixAlejandro_34:

(Start: 5 @38037 has 39 MA's), (14, 38172), (18, 38205), (22, 38256), (26, 38283), (35, 38382), (38, 38463), (40, 38517), (46, 38754), (51, 38880), (54, 38922),

Gene: Flapper_49 Start: 36682, Stop: 37743, Start Num: 3

Candidate Starts for Flapper_49:

(1, 36406), (2, 36619), (Start: 3 @36682 has 2 MA's), (4, 36790), (9, 36868), (16, 36976), (23, 37060), (27, 37081), (28, 37087), (31, 37114), (41, 37342), (43, 37408), (50, 37672), (53, 37717),

Gene: GalacticEye_30 Start: 38068, Stop: 38970, Start Num: 5

Candidate Starts for GalacticEye_30:

(Start: 5 @38068 has 39 MA's), (14, 38206), (20, 38275), (26, 38323), (34, 38386), (35, 38422), (42, 38590), (49, 38842), (53, 38947),

Gene: Guillaume_30 Start: 38118, Stop: 39020, Start Num: 5

Candidate Starts for Guillaume_30:

(Start: 5 @38118 has 39 MA's), (14, 38256), (15, 38274), (20, 38325), (26, 38373), (34, 38436), (35, 38472), (42, 38640), (48, 38874), (49, 38892), (53, 38997),

Gene: Hail2Pitt_30 Start: 38595, Stop: 39497, Start Num: 5

Candidate Starts for Hail2Pitt_30:

(Start: 5 @38595 has 39 MA's), (14, 38733), (20, 38802), (26, 38850), (34, 38913), (35, 38949), (36, 38958), (42, 39117), (48, 39351), (49, 39369), (53, 39474),

Gene: Harambe_30 Start: 38385, Stop: 39287, Start Num: 5

Candidate Starts for Harambe_30:

(Start: 5 @38385 has 39 MA's), (14, 38523), (20, 38592), (26, 38640), (34, 38703), (35, 38739), (42, 38907), (48, 39141), (49, 39159), (53, 39264),

Gene: Hello_30 Start: 38347, Stop: 39249, Start Num: 5

Candidate Starts for Hello_30:

(Start: 5 @38347 has 39 MA's), (14, 38485), (20, 38554), (26, 38602), (34, 38665), (35, 38701), (42, 38869), (49, 39121), (53, 39226),

Gene: Jams_30 Start: 37556, Stop: 38458, Start Num: 5

Candidate Starts for Jams_30:

(Start: 5 @37556 has 39 MA's), (14, 37694), (20, 37763), (26, 37811), (34, 37874), (35, 37910), (42, 38078), (49, 38330), (53, 38435),

Gene: Jellybones_33 Start: 37898, Stop: 38800, Start Num: 5

Candidate Starts for Jellybones_33:

(Start: 5 @37898 has 39 MA's), (18, 38066), (20, 38102), (22, 38117), (25, 38132), (26, 38144), (35, 38243), (38, 38324), (40, 38378), (46, 38615), (51, 38741), (54, 38783),

Gene: John316_33 Start: 37851, Stop: 38753, Start Num: 5

Candidate Starts for John316_33:

(Start: 5 @37851 has 39 MA's), (14, 37986), (18, 38019), (20, 38055), (22, 38070), (25, 38085), (26, 38097), (35, 38196), (38, 38277), (40, 38331), (46, 38568), (51, 38694), (54, 38736),

Gene: Jormungandr_30 Start: 38100, Stop: 39002, Start Num: 5

Candidate Starts for Jormungandr_30:

(Start: 5 @38100 has 39 MA's), (14, 38238), (20, 38307), (26, 38355), (34, 38418), (35, 38454), (42, 38622), (48, 38856), (49, 38874), (53, 38979),

Gene: Kaseim_30 Start: 37541, Stop: 38443, Start Num: 5

Candidate Starts for Kaseim_30:

(Start: 5 @37541 has 39 MA's), (14, 37679), (20, 37748), (26, 37796), (34, 37859), (35, 37895), (42, 38063), (49, 38315), (53, 38420),

Gene: Lahirium_30 Start: 38622, Stop: 39524, Start Num: 5

Candidate Starts for Lahirium_30:

(Start: 5 @38622 has 39 MA's), (14, 38760), (20, 38829), (26, 38877), (34, 38940), (35, 38976), (42, 39144), (48, 39378), (49, 39396), (53, 39501),

Gene: Lidong_30 Start: 38356, Stop: 39258, Start Num: 5

Candidate Starts for Lidong_30:

(Start: 5 @38356 has 39 MA's), (14, 38494), (20, 38563), (26, 38611), (34, 38674), (35, 38710), (42, 38878), (49, 39130), (53, 39235),

Gene: Luker_31 Start: 38575, Stop: 39477, Start Num: 5

Candidate Starts for Luker_31:

(Start: 5 @38575 has 39 MA's), (14, 38713), (20, 38782), (26, 38830), (34, 38893), (35, 38929), (42, 39097), (48, 39331), (49, 39349), (53, 39454),

Gene: Minos_31 Start: 38098, Stop: 39000, Start Num: 5

Candidate Starts for Minos_31:

(Start: 5 @38098 has 39 MA's), (14, 38236), (20, 38305), (26, 38353), (34, 38416), (35, 38452), (42, 38620), (49, 38872), (53, 38977),

Gene: MrWormie_30 Start: 37259, Stop: 38161, Start Num: 5

Candidate Starts for MrWormie_30:

(Start: 5 @37259 has 39 MA's), (14, 37397), (20, 37466), (26, 37514), (34, 37577), (35, 37613), (42, 37781), (49, 38033), (53, 38138),

Gene: Msay19_34 Start: 38032, Stop: 38934, Start Num: 5

Candidate Starts for Msay19_34:

(Start: 5 @38032 has 39 MA's), (11, 38137), (14, 38167), (17, 38197), (19, 38209), (29, 38293), (34, 38341), (35, 38377), (38, 38458), (40, 38512), (43, 38602), (46, 38749), (54, 38917),

Gene: Neoevie_30 Start: 38362, Stop: 39264, Start Num: 5

Candidate Starts for Neoevie_30:

(Start: 5 @38362 has 39 MA's), (14, 38500), (20, 38569), (26, 38617), (34, 38680), (35, 38716), (36, 38725), (42, 38884), (48, 39118), (49, 39136), (53, 39241),

Gene: Newt_31 Start: 38589, Stop: 39491, Start Num: 5

Candidate Starts for Newt_31:

(Start: 5 @38589 has 39 MA's), (14, 38727), (20, 38796), (26, 38844), (34, 38907), (35, 38943), (42, 39111), (49, 39363), (53, 39468),

Gene: Nimi13_30 Start: 38107, Stop: 39009, Start Num: 5

Candidate Starts for Nimi13_30:

(Start: 5 @38107 has 39 MA's), (14, 38245), (20, 38314), (26, 38362), (34, 38425), (35, 38461), (36, 38470), (42, 38629), (48, 38863), (49, 38881), (53, 38986),

Gene: Poland_34 Start: 38011, Stop: 38913, Start Num: 5

Candidate Starts for Poland_34:

(Start: 5 @38011 has 39 MA's), (11, 38116), (14, 38146), (17, 38176), (19, 38188), (29, 38272), (34, 38320), (35, 38356), (38, 38437), (40, 38491), (43, 38581), (46, 38728), (54, 38896),

Gene: Pupper_126 Start: 83200, Stop: 84090, Start Num: 5

Candidate Starts for Pupper_126:

(Start: 5 @83200 has 39 MA's), (30, 83473), (44, 83770), (45, 83839), (47, 83935),

Gene: SCentae_125 Start: 83353, Stop: 84243, Start Num: 5

Candidate Starts for SCentae_125:

(Start: 5 @83353 has 39 MA's), (47, 84088),

Gene: Shelley_30 Start: 37583, Stop: 38485, Start Num: 5

Candidate Starts for Shelley_30:

(Start: 5 @37583 has 39 MA's), (14, 37721), (20, 37790), (26, 37838), (34, 37901), (35, 37937), (42, 38105), (49, 38357), (53, 38462),

Gene: Skog_188 Start: 113083, Stop: 113973, Start Num: 5

Candidate Starts for Skog_188:

(Start: 5 @113083 has 39 MA's), (8, 113122), (12, 113194), (30, 113356), (45, 113722), (47, 113818),

Gene: Sticker17_30 Start: 38098, Stop: 39000, Start Num: 5

Candidate Starts for Sticker17_30:

(Start: 5 @38098 has 39 MA's), (14, 38236), (20, 38305), (26, 38353), (34, 38416), (35, 38452), (42, 38620), (48, 38854), (49, 38872), (53, 38977),

Gene: Teal_30 Start: 38566, Stop: 39468, Start Num: 5

Candidate Starts for Teal_30:

(Start: 5 @38566 has 39 MA's), (14, 38704), (20, 38773), (26, 38821), (34, 38884), (35, 38920), (42, 39088), (49, 39340), (53, 39445),

Gene: Woes_30 Start: 38617, Stop: 39519, Start Num: 5

Candidate Starts for Woes_30:

(Start: 5 @38617 has 39 MA's), (14, 38755), (20, 38824), (26, 38872), (34, 38935), (35, 38971), (49, 39391), (53, 39496),