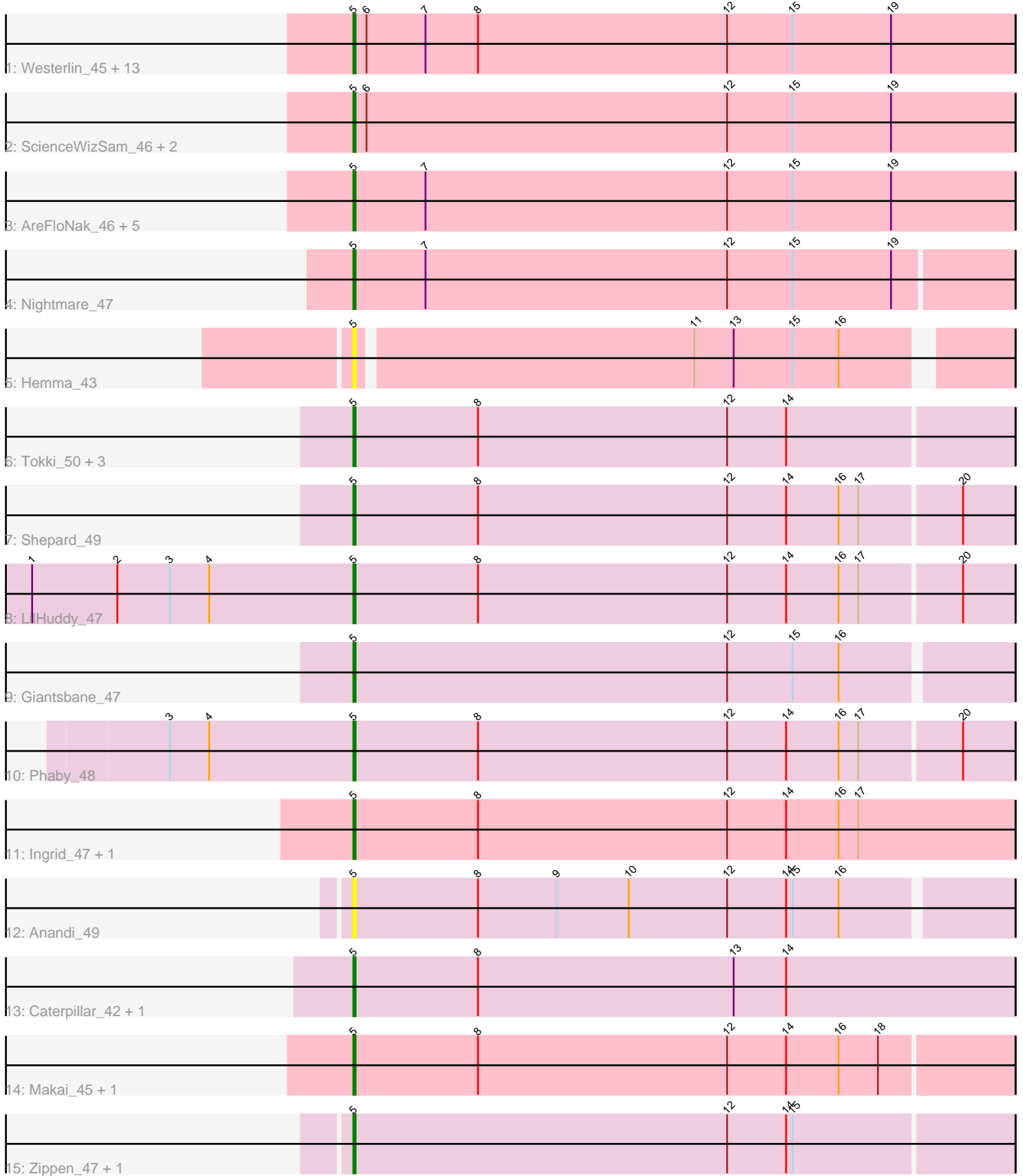


Pham 294870



Note: Tracks are now grouped by subcluster and scaled. Switching in subcluster is indicated by changes in track color. Track scale is now set by default to display the region 30 bp upstream of start 1 to 30 bp downstream of the last possible start. If this default region is judged to be packed too tightly with annotated starts, the track will be further scaled to only show that region of the ORF with annotated starts. This action will be indicated by adding "Zoomed" to the title. For starts, yellow indicates the location of called starts comprised solely of Glimmer/GeneMark auto-annotations, green indicates the location of called starts with at least 1 manual gene annotation.

Pham 294870 Report

This analysis was run 04/18/26 on database version 643.

Pham number 294870 has 42 members, 8 are drafts.

Phages represented in each track:

- Track 1 : Westerlin_45, Brunswick_46, Tatanka_44, ElephantMan_45, Tenno_46, Teacup_46, LucySwiss_46, Acai_47, Issa_45, Synepsis_44, Dinallo_45, Niktson_45, CapnMurica_43, MiniBagel_45
- Track 2 : ScienceWizSam_46, DevitoJr_44, Trustiboi_45
- Track 3 : AreFloNak_46, Gordon_43, Breylor17_46, Darby_44, CastorTray_48, Nivinsha_46
- Track 4 : Nightmare_47
- Track 5 : Hemma_43
- Track 6 : Tokki_50, Chlochlo_47, Tipton_48, Bouchard_46
- Track 7 : Shepard_49
- Track 8 : LilHuddy_47
- Track 9 : Giantsbane_47
- Track 10 : Phaby_48
- Track 11 : Ingrid_47, Loretta_47
- Track 12 : Anandi_49
- Track 13 : Caterpillar_42, MediumFry_43
- Track 14 : Makai_45, Truckee_43
- Track 15 : Zippen_47, Inked_49

Summary of Final Annotations (See graph section above for start numbers):

The start number called the most often in the published annotations is 5, it was called in 34 of the 34 non-draft genes in the pham.

Genes that call this "Most Annotated" start:

- Acai_47, Anandi_49, AreFloNak_46, Bouchard_46, Breylor17_46, Brunswick_46, CapnMurica_43, CastorTray_48, Caterpillar_42, Chlochlo_47, Darby_44, DevitoJr_44, Dinallo_45, ElephantMan_45, Giantsbane_47, Gordon_43, Hemma_43, Ingrid_47, Inked_49, Issa_45, LilHuddy_47, Loretta_47, LucySwiss_46, Makai_45, MediumFry_43, MiniBagel_45, Nightmare_47, Niktson_45, Nivinsha_46, Phaby_48, ScienceWizSam_46, Shepard_49, Synepsis_44, Tatanka_44, Teacup_46, Tenno_46, Tipton_48, Tokki_50, Truckee_43, Trustiboi_45, Westerlin_45, Zippen_47,

Genes that have the "Most Annotated" start but do not call it:

-

Genes that do not have the "Most Annotated" start:

-

Summary by start number:

Start 5:

- Found in 42 of 42 (100.0%) of genes in pham
- Manual Annotations of this start: 34 of 34
- Called 100.0% of time when present
- Phage (with cluster) where this start called: Acai_47 (AU1), Anandi_49 (AU4), AreFloNak_46 (AU1), Bouchard_46 (AU2), Breylor17_46 (AU1), Brunswick_46 (AU1), CapnMurica_43 (AU1), CastorTray_48 (AU1), Caterpillar_42 (AU4), Chlochlo_47 (AU2), Darby_44 (AU1), DevitoJr_44 (AU1), Dinallo_45 (AU1), ElephantMan_45 (AU1), Giantsbane_47 (AU2), Gordon_43 (AU1), Hemma_43 (AU1), Ingrid_47 (AU3), Inked_49 (AU7), Issa_45 (AU1), LilHuddy_47 (AU2), Loretta_47 (AU3), LucySwiss_46 (AU1), Makai_45 (AU5), MediumFry_43 (AU4), MiniBagel_45 (AU1), Nightmare_47 (AU1), Niktson_45 (AU1), Nivinsha_46 (AU1), Phaby_48 (AU2), ScienceWizSam_46 (AU1), Shepard_49 (AU2), Synopsis_44 (AU1), Tatanka_44 (AU1), Teacup_46 (AU1), Tenno_46 (AU1), Tipton_48 (AU2), Tokki_50 (AU2), Truckee_43 (AU5), Trustiboi_45 (AU1), Westerlin_45 (AU1), Zippen_47 (AU7),

Summary by clusters:

There are 6 clusters represented in this pham: AU1, AU3, AU2, AU5, AU4, AU7,

Info for manual annotations of cluster AU1:

- Start number 5 was manually annotated 19 times for cluster AU1.

Info for manual annotations of cluster AU2:

- Start number 5 was manually annotated 7 times for cluster AU2.

Info for manual annotations of cluster AU3:

- Start number 5 was manually annotated 2 times for cluster AU3.

Info for manual annotations of cluster AU4:

- Start number 5 was manually annotated 2 times for cluster AU4.

Info for manual annotations of cluster AU5:

- Start number 5 was manually annotated 2 times for cluster AU5.

Info for manual annotations of cluster AU7:

- Start number 5 was manually annotated 2 times for cluster AU7.

Gene Information:

Gene: Acai_47 Start: 34277, Stop: 34579, Start Num: 5

Candidate Starts for Acai_47:

(Start: 5 @34277 has 34 MA's), (6, 34283), (7, 34310), (8, 34334), (12, 34448), (15, 34478), (19, 34523),

Gene: Anandi_49 Start: 34587, Stop: 34883, Start Num: 5

Candidate Starts for Anandi_49:

(Start: 5 @34587 has 34 MA's), (8, 34644), (9, 34680), (10, 34713), (12, 34758), (14, 34785), (15, 34788), (16, 34809),

Gene: AreFloNak_46 Start: 34044, Stop: 34346, Start Num: 5

Candidate Starts for AreFloNak_46:

(Start: 5 @34044 has 34 MA's), (7, 34077), (12, 34215), (15, 34245), (19, 34290),

Gene: Bouchard_46 Start: 34278, Stop: 34577, Start Num: 5

Candidate Starts for Bouchard_46:

(Start: 5 @34278 has 34 MA's), (8, 34335), (12, 34449), (14, 34476),

Gene: Breylor17_46 Start: 34842, Stop: 35144, Start Num: 5

Candidate Starts for Breylor17_46:

(Start: 5 @34842 has 34 MA's), (7, 34875), (12, 35013), (15, 35043), (19, 35088),

Gene: Brunswick_46 Start: 33924, Stop: 34226, Start Num: 5

Candidate Starts for Brunswick_46:

(Start: 5 @33924 has 34 MA's), (6, 33930), (7, 33957), (8, 33981), (12, 34095), (15, 34125), (19, 34170),

Gene: CapnMurica_43 Start: 34822, Stop: 35124, Start Num: 5

Candidate Starts for CapnMurica_43:

(Start: 5 @34822 has 34 MA's), (6, 34828), (7, 34855), (8, 34879), (12, 34993), (15, 35023), (19, 35068),

Gene: CastorTray_48 Start: 34652, Stop: 34954, Start Num: 5

Candidate Starts for CastorTray_48:

(Start: 5 @34652 has 34 MA's), (7, 34685), (12, 34823), (15, 34853), (19, 34898),

Gene: Caterpillar_42 Start: 33123, Stop: 33425, Start Num: 5

Candidate Starts for Caterpillar_42:

(Start: 5 @33123 has 34 MA's), (8, 33180), (13, 33297), (14, 33321),

Gene: Chlochlo_47 Start: 34022, Stop: 34321, Start Num: 5

Candidate Starts for Chlochlo_47:

(Start: 5 @34022 has 34 MA's), (8, 34079), (12, 34193), (14, 34220),

Gene: Darby_44 Start: 33824, Stop: 34126, Start Num: 5

Candidate Starts for Darby_44:

(Start: 5 @33824 has 34 MA's), (7, 33857), (12, 33995), (15, 34025), (19, 34070),

Gene: DevitoJr_44 Start: 34012, Stop: 34314, Start Num: 5

Candidate Starts for DevitoJr_44:

(Start: 5 @34012 has 34 MA's), (6, 34018), (12, 34183), (15, 34213), (19, 34258),

Gene: Dinallo_45 Start: 35131, Stop: 35433, Start Num: 5

Candidate Starts for Dinallo_45:

(Start: 5 @35131 has 34 MA's), (6, 35137), (7, 35164), (8, 35188), (12, 35302), (15, 35332), (19, 35377),

Gene: ElephantMan_45 Start: 34497, Stop: 34799, Start Num: 5
Candidate Starts for ElephantMan_45:
(Start: 5 @34497 has 34 MA's), (6, 34503), (7, 34530), (8, 34554), (12, 34668), (15, 34698), (19, 34743),

Gene: Giantsbane_47 Start: 33208, Stop: 33504, Start Num: 5
Candidate Starts for Giantsbane_47:
(Start: 5 @33208 has 34 MA's), (12, 33379), (15, 33409), (16, 33430),

Gene: Gordon_43 Start: 34647, Stop: 34946, Start Num: 5
Candidate Starts for Gordon_43:
(Start: 5 @34647 has 34 MA's), (7, 34680), (12, 34818), (15, 34848), (19, 34893),

Gene: Hemma_43 Start: 31081, Stop: 31365, Start Num: 5
Candidate Starts for Hemma_43:
(Start: 5 @31081 has 34 MA's), (11, 31231), (13, 31249), (15, 31276), (16, 31297),

Gene: Ingrid_47 Start: 33951, Stop: 34253, Start Num: 5
Candidate Starts for Ingrid_47:
(Start: 5 @33951 has 34 MA's), (8, 34008), (12, 34122), (14, 34149), (16, 34173), (17, 34182),

Gene: Inked_49 Start: 35083, Stop: 35382, Start Num: 5
Candidate Starts for Inked_49:
(Start: 5 @35083 has 34 MA's), (12, 35254), (14, 35281), (15, 35284),

Gene: Issa_45 Start: 34116, Stop: 34418, Start Num: 5
Candidate Starts for Issa_45:
(Start: 5 @34116 has 34 MA's), (6, 34122), (7, 34149), (8, 34173), (12, 34287), (15, 34317), (19, 34362),

Gene: LilHuddy_47 Start: 34159, Stop: 34458, Start Num: 5
Candidate Starts for LilHuddy_47:
(1, 34012), (2, 34051), (3, 34075), (4, 34093), (Start: 5 @34159 has 34 MA's), (8, 34216), (12, 34330), (14, 34357), (16, 34381), (17, 34390), (20, 34435),

Gene: Loretta_47 Start: 33951, Stop: 34253, Start Num: 5
Candidate Starts for Loretta_47:
(Start: 5 @33951 has 34 MA's), (8, 34008), (12, 34122), (14, 34149), (16, 34173), (17, 34182),

Gene: LucySwiss_46 Start: 33918, Stop: 34220, Start Num: 5
Candidate Starts for LucySwiss_46:
(Start: 5 @33918 has 34 MA's), (6, 33924), (7, 33951), (8, 33975), (12, 34089), (15, 34119), (19, 34164),

Gene: Makai_45 Start: 34138, Stop: 34437, Start Num: 5
Candidate Starts for Makai_45:
(Start: 5 @34138 has 34 MA's), (8, 34195), (12, 34309), (14, 34336), (16, 34360), (18, 34378),

Gene: MediumFry_43 Start: 33426, Stop: 33728, Start Num: 5
Candidate Starts for MediumFry_43:
(Start: 5 @33426 has 34 MA's), (8, 33483), (13, 33600), (14, 33624),

Gene: MiniBagel_45 Start: 34804, Stop: 35106, Start Num: 5

Candidate Starts for MiniBagel_45:

(Start: 5 @34804 has 34 MA's), (6, 34810), (7, 34837), (8, 34861), (12, 34975), (15, 35005), (19, 35050),

Gene: Nightmare_47 Start: 35063, Stop: 35362, Start Num: 5

Candidate Starts for Nightmare_47:

(Start: 5 @35063 has 34 MA's), (7, 35096), (12, 35234), (15, 35264), (19, 35309),

Gene: Niktson_45 Start: 34497, Stop: 34799, Start Num: 5

Candidate Starts for Niktson_45:

(Start: 5 @34497 has 34 MA's), (6, 34503), (7, 34530), (8, 34554), (12, 34668), (15, 34698), (19, 34743),

Gene: Nivinsha_46 Start: 34044, Stop: 34346, Start Num: 5

Candidate Starts for Nivinsha_46:

(Start: 5 @34044 has 34 MA's), (7, 34077), (12, 34215), (15, 34245), (19, 34290),

Gene: Phaby_48 Start: 34705, Stop: 35004, Start Num: 5

Candidate Starts for Phaby_48:

(3, 34621), (4, 34639), (Start: 5 @34705 has 34 MA's), (8, 34762), (12, 34876), (14, 34903), (16, 34927), (17, 34936), (20, 34981),

Gene: ScienceWizSam_46 Start: 34154, Stop: 34456, Start Num: 5

Candidate Starts for ScienceWizSam_46:

(Start: 5 @34154 has 34 MA's), (6, 34160), (12, 34325), (15, 34355), (19, 34400),

Gene: Shepard_49 Start: 34232, Stop: 34531, Start Num: 5

Candidate Starts for Shepard_49:

(Start: 5 @34232 has 34 MA's), (8, 34289), (12, 34403), (14, 34430), (16, 34454), (17, 34463), (20, 34508),

Gene: Synopsis_44 Start: 34166, Stop: 34468, Start Num: 5

Candidate Starts for Synopsis_44:

(Start: 5 @34166 has 34 MA's), (6, 34172), (7, 34199), (8, 34223), (12, 34337), (15, 34367), (19, 34412),

Gene: Tatanka_44 Start: 34336, Stop: 34638, Start Num: 5

Candidate Starts for Tatanka_44:

(Start: 5 @34336 has 34 MA's), (6, 34342), (7, 34369), (8, 34393), (12, 34507), (15, 34537), (19, 34582),

Gene: Teacup_46 Start: 34526, Stop: 34828, Start Num: 5

Candidate Starts for Teacup_46:

(Start: 5 @34526 has 34 MA's), (6, 34532), (7, 34559), (8, 34583), (12, 34697), (15, 34727), (19, 34772),

Gene: Tenno_46 Start: 34812, Stop: 35114, Start Num: 5

Candidate Starts for Tenno_46:

(Start: 5 @34812 has 34 MA's), (6, 34818), (7, 34845), (8, 34869), (12, 34983), (15, 35013), (19, 35058),

Gene: Tipton_48 Start: 34681, Stop: 34980, Start Num: 5

Candidate Starts for Tipton_48:

(Start: 5 @34681 has 34 MA's), (8, 34738), (12, 34852), (14, 34879),

Gene: Tokki_50 Start: 34333, Stop: 34632, Start Num: 5

Candidate Starts for Tokki_50:

(Start: 5 @34333 has 34 MA's), (8, 34390), (12, 34504), (14, 34531),

Gene: Truckee_43 Start: 33926, Stop: 34225, Start Num: 5

Candidate Starts for Truckee_43:

(Start: 5 @33926 has 34 MA's), (8, 33983), (12, 34097), (14, 34124), (16, 34148), (18, 34166),

Gene: Trustiboi_45 Start: 34372, Stop: 34674, Start Num: 5

Candidate Starts for Trustiboi_45:

(Start: 5 @34372 has 34 MA's), (6, 34378), (12, 34543), (15, 34573), (19, 34618),

Gene: Westerlin_45 Start: 35634, Stop: 35936, Start Num: 5

Candidate Starts for Westerlin_45:

(Start: 5 @35634 has 34 MA's), (6, 35640), (7, 35667), (8, 35691), (12, 35805), (15, 35835), (19, 35880),

Gene: Zippen_47 Start: 34782, Stop: 35081, Start Num: 5

Candidate Starts for Zippen_47:

(Start: 5 @34782 has 34 MA's), (12, 34953), (14, 34980), (15, 34983),