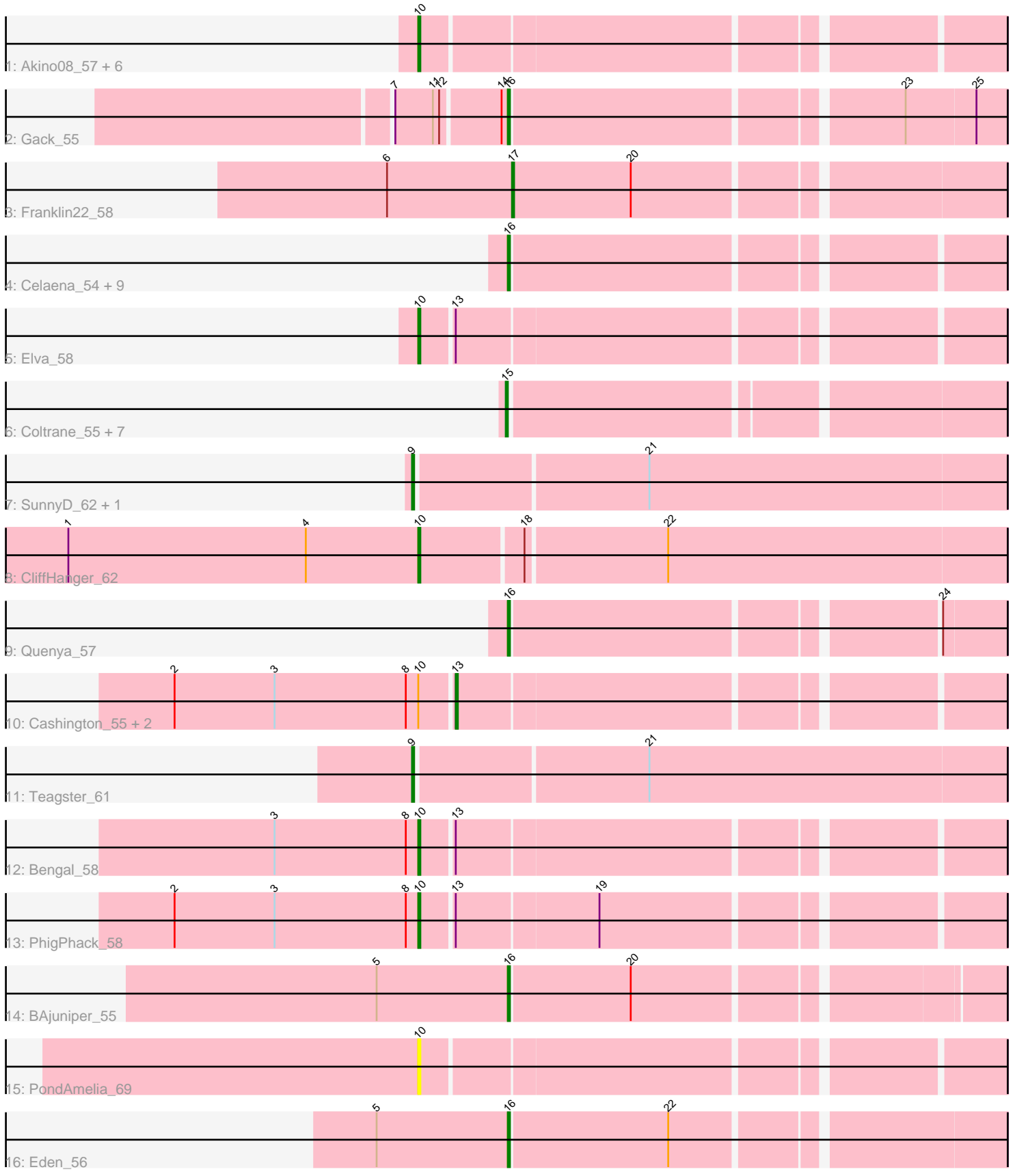


Pham 294875



Note: Tracks are now grouped by subcluster and scaled. Switching in subcluster is indicated by changes in track color. Track scale is now set by default to display the region 30 bp upstream of start 1 to 30 bp downstream of the last possible start. If this default region is judged to be packed too tightly with annotated starts, the track will be further scaled to only show that region of the ORF with annotated starts. This action will be indicated by adding "Zoomed" to the title. For starts, yellow indicates the location of called starts comprised solely of Glimmer/GeneMark auto-annotations, green indicates the location of called starts with at least 1 manual gene annotation.

Pham 294875 Report

This analysis was run 04/18/26 on database version 643.

Pham number 294875 has 41 members, 5 are drafts.

Phages represented in each track:

- Track 1 : Akino08_57, Stromboli_56, BabyYoda_56, WalkingDead_58, Icarian_59, DirtyBubble_55, Loviatar_57
- Track 2 : Gack_55
- Track 3 : Franklin22_58
- Track 4 : Celaena_54, Kieran_53, Bachaco_54, FlameThrower_53, Kamdara_53, Sharkboy_54, Katzastrophic_55, Dismas_54, ChiliPepper_53, Rona_53
- Track 5 : Elva_58
- Track 6 : Coltrane_55, Brahms_55, Armstrong_55, Clayda5_57, Bernstein_55, Vitas_55, Rollins_55, Skylord_55
- Track 7 : SunnyD_62, Shayna_62
- Track 8 : CliffHanger_62
- Track 9 : Quenya_57
- Track 10 : Cashington_55, Milomuff_57, Solea_58
- Track 11 : Teagster_61
- Track 12 : Bengal_58
- Track 13 : PhigPhack_58
- Track 14 : BAjuniper_55
- Track 15 : PondAmelia_69
- Track 16 : Eden_56

Summary of Final Annotations (See graph section above for start numbers):

The start number called the most often in the published annotations is 16, it was called in 13 of the 36 non-draft genes in the pham.

Genes that call this "Most Annotated" start:

- BAjuniper_55, Bachaco_54, Celaena_54, ChiliPepper_53, Dismas_54, Eden_56, FlameThrower_53, Gack_55, Kamdara_53, Katzastrophic_55, Kieran_53, Quenya_57, Rona_53, Sharkboy_54,

Genes that have the "Most Annotated" start but do not call it:

-

Genes that do not have the "Most Annotated" start:

- Akino08_57, Armstrong_55, BabyYoda_56, Bengal_58, Bernstein_55, Brahms_55, Cashington_55, Clayda5_57, CliffHanger_62, Coltrane_55, DirtyBubble_55, Elva_58, Franklin22_58, Icarian_59, Loviatar_57, Milomuff_57, PhigPhack_58, PondAmelia_69, Rollins_55, Shayna_62, Skylord_55, Solea_58, Stromboli_56, SunnyD_62, Teagster_61, Vitas_55, WalkingDead_58,

Summary by start number:

Start 9:

- Found in 3 of 41 (7.3%) of genes in pham
- Manual Annotations of this start: 3 of 36
- Called 100.0% of time when present
- Phage (with cluster) where this start called: Shayna_62 (EB), SunnyD_62 (EB), Teagster_61 (EB),

Start 10:

- Found in 15 of 41 (36.6%) of genes in pham
- Manual Annotations of this start: 10 of 36
- Called 80.0% of time when present
- Phage (with cluster) where this start called: Akino08_57 (EB), BabyYoda_56 (EB), Bengal_58 (EB), CliffHanger_62 (EB), DirtyBubble_55 (EB), Elva_58 (EB), Icarian_59 (EB), Loviatar_57 (EB), PhigPhack_58 (EB), PondAmelia_69 (EB), Stromboli_56 (EB), WalkingDead_58 (EB),

Start 13:

- Found in 6 of 41 (14.6%) of genes in pham
- Manual Annotations of this start: 1 of 36
- Called 50.0% of time when present
- Phage (with cluster) where this start called: Cashington_55 (EB), Milomuff_57 (EB), Solea_58 (EB),

Start 15:

- Found in 8 of 41 (19.5%) of genes in pham
- Manual Annotations of this start: 8 of 36
- Called 100.0% of time when present
- Phage (with cluster) where this start called: Armstrong_55 (EB), Bernstein_55 (EB), Brahms_55 (EB), Clayda5_57 (EB), Coltrane_55 (EB), Rollins_55 (EB), Skylord_55 (EB), Vitas_55 (EB),

Start 16:

- Found in 14 of 41 (34.1%) of genes in pham
- Manual Annotations of this start: 13 of 36
- Called 100.0% of time when present
- Phage (with cluster) where this start called: BAjuniper_55 (EB), Bachaco_54 (EB), Celaena_54 (EB), ChiliPepper_53 (EB), Dismas_54 (EB), Eden_56 (EB), FlameThrower_53 (EB), Gack_55 (EB), Kamdara_53 (EB), Katzastrophic_55 (EB), Kieran_53 (EB), Quenya_57 (EB), Rona_53 (EB), Sharkboy_54 (EB),

Start 17:

- Found in 1 of 41 (2.4%) of genes in pham
- Manual Annotations of this start: 1 of 36
- Called 100.0% of time when present
- Phage (with cluster) where this start called: Franklin22_58 (EB),

Summary by clusters:

There is one cluster represented in this pham: EB

Info for manual annotations of cluster EB:

- Start number 9 was manually annotated 3 times for cluster EB.
- Start number 10 was manually annotated 10 times for cluster EB.
- Start number 13 was manually annotated 1 time for cluster EB.
- Start number 15 was manually annotated 8 times for cluster EB.
- Start number 16 was manually annotated 13 times for cluster EB.
- Start number 17 was manually annotated 1 time for cluster EB.

Gene Information:

Gene: Akino08_57 Start: 38324, Stop: 38584, Start Num: 10

Candidate Starts for Akino08_57:

(Start: 10 @38324 has 10 MA's),

Gene: Armstrong_55 Start: 34759, Stop: 34983, Start Num: 15

Candidate Starts for Armstrong_55:

(Start: 15 @34759 has 8 MA's),

Gene: BAjuniper_55 Start: 37299, Stop: 37520, Start Num: 16

Candidate Starts for BAjuniper_55:

(5, 37236), (Start: 16 @37299 has 13 MA's), (20, 37356),

Gene: BabyYoda_56 Start: 37257, Stop: 37517, Start Num: 10

Candidate Starts for BabyYoda_56:

(Start: 10 @37257 has 10 MA's),

Gene: Bachaco_54 Start: 37983, Stop: 38204, Start Num: 16

Candidate Starts for Bachaco_54:

(Start: 16 @37983 has 13 MA's),

Gene: Bengal_58 Start: 36486, Stop: 36746, Start Num: 10

Candidate Starts for Bengal_58:

(3, 36417), (8, 36480), (Start: 10 @36486 has 10 MA's), (Start: 13 @36501 has 1 MA's),

Gene: Bernstein_55 Start: 34757, Stop: 34981, Start Num: 15

Candidate Starts for Bernstein_55:

(Start: 15 @34757 has 8 MA's),

Gene: Brahms_55 Start: 34659, Stop: 34883, Start Num: 15

Candidate Starts for Brahms_55:

(Start: 15 @34659 has 8 MA's),

Gene: Cashington_55 Start: 35827, Stop: 36072, Start Num: 13

Candidate Starts for Cashington_55:

(2, 35695), (3, 35743), (8, 35806), (Start: 10 @35812 has 10 MA's), (Start: 13 @35827 has 1 MA's),

Gene: Celaena_54 Start: 37745, Stop: 37966, Start Num: 16
Candidate Starts for Celaena_54:
(Start: 16 @37745 has 13 MA's),

Gene: ChiliPepper_53 Start: 37055, Stop: 37276, Start Num: 16
Candidate Starts for ChiliPepper_53:
(Start: 16 @37055 has 13 MA's),

Gene: Clayda5_57 Start: 34724, Stop: 34948, Start Num: 15
Candidate Starts for Clayda5_57:
(Start: 15 @34724 has 8 MA's),

Gene: CliffHanger_62 Start: 35855, Stop: 36130, Start Num: 10
Candidate Starts for CliffHanger_62:
(1, 35687), (4, 35801), (Start: 10 @35855 has 10 MA's), (18, 35903), (22, 35969),

Gene: Coltrane_55 Start: 34659, Stop: 34883, Start Num: 15
Candidate Starts for Coltrane_55:
(Start: 15 @34659 has 8 MA's),

Gene: DirtyBubble_55 Start: 36927, Stop: 37187, Start Num: 10
Candidate Starts for DirtyBubble_55:
(Start: 10 @36927 has 10 MA's),

Gene: Dismas_54 Start: 36976, Stop: 37197, Start Num: 16
Candidate Starts for Dismas_54:
(Start: 16 @36976 has 13 MA's),

Gene: Eden_56 Start: 35874, Stop: 36098, Start Num: 16
Candidate Starts for Eden_56:
(5, 35811), (Start: 16 @35874 has 13 MA's), (22, 35949),

Gene: Elva_58 Start: 37321, Stop: 37581, Start Num: 10
Candidate Starts for Elva_58:
(Start: 10 @37321 has 10 MA's), (Start: 13 @37336 has 1 MA's),

Gene: FlameThrower_53 Start: 36782, Stop: 37003, Start Num: 16
Candidate Starts for FlameThrower_53:
(Start: 16 @36782 has 13 MA's),

Gene: Franklin22_58 Start: 35518, Stop: 35742, Start Num: 17
Candidate Starts for Franklin22_58:
(6, 35458), (Start: 17 @35518 has 1 MA's), (20, 35575),

Gene: Gack_55 Start: 35465, Stop: 35689, Start Num: 16
Candidate Starts for Gack_55:
(7, 35414), (11, 35432), (12, 35435), (14, 35462), (Start: 16 @35465 has 13 MA's), (23, 35642), (25, 35675),

Gene: Icarian_59 Start: 37925, Stop: 38185, Start Num: 10
Candidate Starts for Icarian_59:
(Start: 10 @37925 has 10 MA's),

Gene: Kamdara_53 Start: 37014, Stop: 37235, Start Num: 16
Candidate Starts for Kamdara_53:
(Start: 16 @37014 has 13 MA's),

Gene: Katzastrophic_55 Start: 37292, Stop: 37513, Start Num: 16
Candidate Starts for Katzastrophic_55:
(Start: 16 @37292 has 13 MA's),

Gene: Kieran_53 Start: 37017, Stop: 37238, Start Num: 16
Candidate Starts for Kieran_53:
(Start: 16 @37017 has 13 MA's),

Gene: Loviatar_57 Start: 38339, Stop: 38599, Start Num: 10
Candidate Starts for Loviatar_57:
(Start: 10 @38339 has 10 MA's),

Gene: Milomuff_57 Start: 36355, Stop: 36600, Start Num: 13
Candidate Starts for Milomuff_57:
(2, 36223), (3, 36271), (8, 36334), (Start: 10 @36340 has 10 MA's), (Start: 13 @36355 has 1 MA's),

Gene: PhigPhack_58 Start: 36350, Stop: 36610, Start Num: 10
Candidate Starts for PhigPhack_58:
(2, 36233), (3, 36281), (8, 36344), (Start: 10 @36350 has 10 MA's), (Start: 13 @36365 has 1 MA's),
(19, 36431),

Gene: PondAmelia_69 Start: 37304, Stop: 37564, Start Num: 10
Candidate Starts for PondAmelia_69:
(Start: 10 @37304 has 10 MA's),

Gene: Quenya_57 Start: 37424, Stop: 37645, Start Num: 16
Candidate Starts for Quenya_57:
(Start: 16 @37424 has 13 MA's), (24, 37616),

Gene: Rollins_55 Start: 34757, Stop: 34981, Start Num: 15
Candidate Starts for Rollins_55:
(Start: 15 @34757 has 8 MA's),

Gene: Rona_53 Start: 36967, Stop: 37188, Start Num: 16
Candidate Starts for Rona_53:
(Start: 16 @36967 has 13 MA's),

Gene: Sharkboy_54 Start: 37066, Stop: 37287, Start Num: 16
Candidate Starts for Sharkboy_54:
(Start: 16 @37066 has 13 MA's),

Gene: Shayna_62 Start: 36677, Stop: 36955, Start Num: 9
Candidate Starts for Shayna_62:
(Start: 9 @36677 has 3 MA's), (21, 36785),

Gene: Skylord_55 Start: 34698, Stop: 34922, Start Num: 15
Candidate Starts for Skylord_55:
(Start: 15 @34698 has 8 MA's),

Gene: Solea_58 Start: 36354, Stop: 36599, Start Num: 13

Candidate Starts for Solea_58:

(2, 36222), (3, 36270), (8, 36333), (Start: 10 @36339 has 10 MA's), (Start: 13 @36354 has 1 MA's),

Gene: Stromboli_56 Start: 37294, Stop: 37554, Start Num: 10

Candidate Starts for Stromboli_56:

(Start: 10 @37294 has 10 MA's),

Gene: SunnyD_62 Start: 36683, Stop: 36961, Start Num: 9

Candidate Starts for SunnyD_62:

(Start: 9 @36683 has 3 MA's), (21, 36791),

Gene: Teagster_61 Start: 36981, Stop: 37259, Start Num: 9

Candidate Starts for Teagster_61:

(Start: 9 @36981 has 3 MA's), (21, 37089),

Gene: Vitas_55 Start: 34730, Stop: 34954, Start Num: 15

Candidate Starts for Vitas_55:

(Start: 15 @34730 has 8 MA's),

Gene: WalkingDead_58 Start: 38049, Stop: 38309, Start Num: 10

Candidate Starts for WalkingDead_58:

(Start: 10 @38049 has 10 MA's),