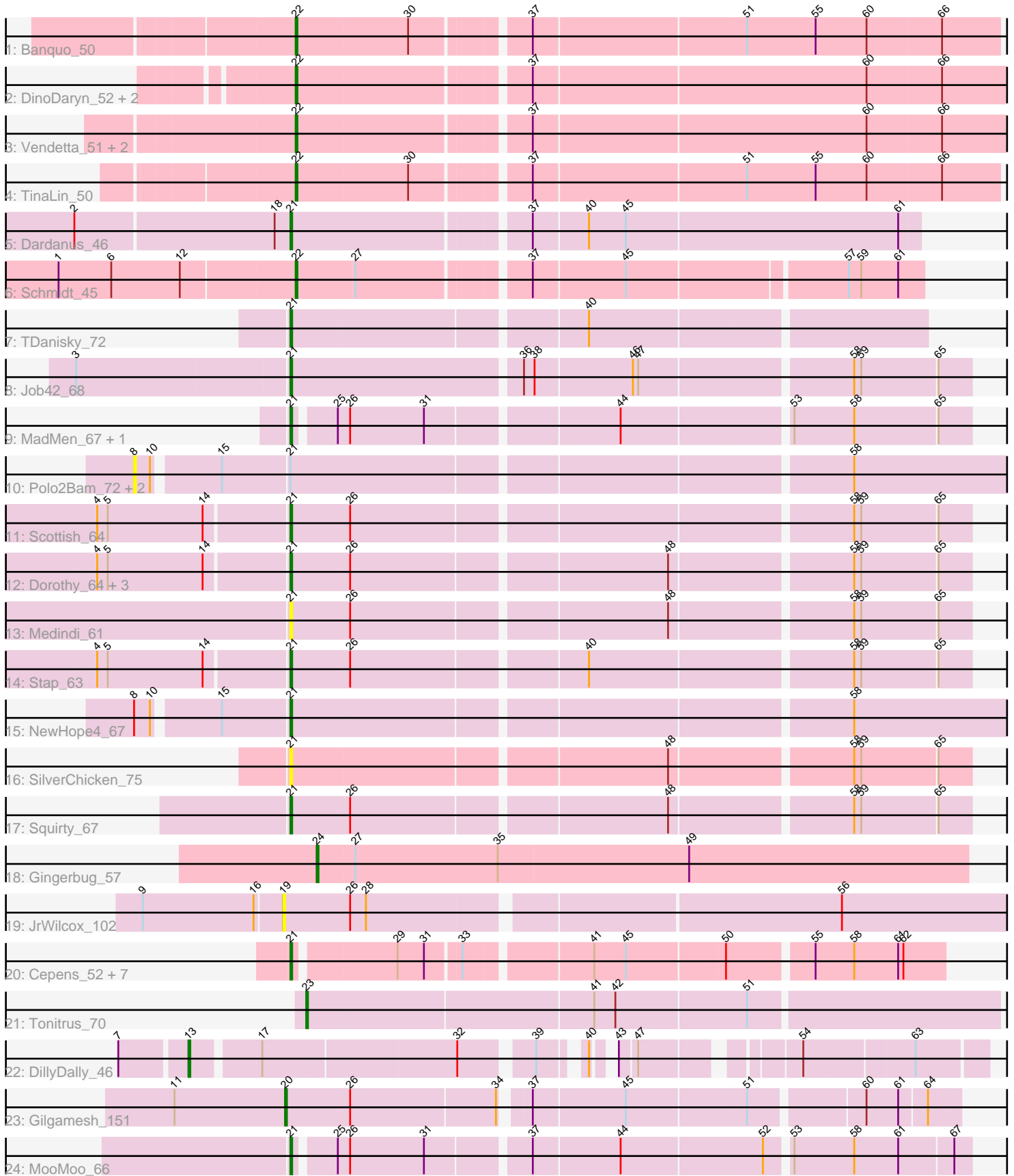


Pham 294881



Note: Tracks are now grouped by subcluster and scaled. Switching in subcluster is indicated by changes in track color. Track scale is now set by default to display the region 30 bp upstream of start 1 to 30 bp downstream of the last possible start. If this default region is judged to be packed too tightly with annotated starts, the track will be further scaled to only show that region of the ORF with annotated starts. This action will be indicated by adding "Zoomed" to the title. For starts, yellow indicates the location of called starts comprised solely of Glimmer/GeneMark auto-annotations, green indicates the location of called starts with at least 1 manual gene annotation.

Pham 294881 Report

This analysis was run 04/18/26 on database version 643.

Pham number 294881 has 41 members, 6 are drafts.

Phages represented in each track:

- Track 1 : Banquo_50
- Track 2 : DinoDaryn_52, Huffy_52, TZGordon_53
- Track 3 : Vendetta_51, Goib_52, Splinter_51
- Track 4 : TinaLin_50
- Track 5 : Dardanus_46
- Track 6 : Schmidt_45
- Track 7 : TDanisky_72
- Track 8 : Job42_68
- Track 9 : MadMen_67, Leozinho_66
- Track 10 : Polo2Bam_72, Enzomatic_73, SeaLumen_70
- Track 11 : Scottish_64
- Track 12 : Dorothy_64, Sassafras_64, KingMidas_65, RedBird_64
- Track 13 : Medindi_61
- Track 14 : Stap_63
- Track 15 : NewHope4_67
- Track 16 : SilverChicken_75
- Track 17 : Squirty_67
- Track 18 : Gingerbug_57
- Track 19 : JrWilcox_102
- Track 20 : Cepens_52, PR_52, D12_51, Megabear_52, Jeon_52, Argie_53, GodPhather_53, Taptic_52
- Track 21 : Tonitrus_70
- Track 22 : DillyDally_46
- Track 23 : Gilgamesh_151
- Track 24 : MooMoo_66

Summary of Final Annotations (See graph section above for start numbers):

The start number called the most often in the published annotations is 21, it was called in 22 of the 35 non-draft genes in the pham.

Genes that call this "Most Annotated" start:

- Argie_53, Cepens_52, D12_51, Dardanus_46, Dorothy_64, GodPhather_53, Jeon_52, Job42_68, KingMidas_65, Leozinho_66, MadMen_67, Medindi_61,

Megabear_52, MooMoo_66, NewHope4_67, PR_52, RedBird_64, Sassafras_64, Scottish_64, SilverChicken_75, Squirty_67, Stap_63, TDanisky_72, Taptic_52,

Genes that have the "Most Annotated" start but do not call it:

- Enzomatic_73, Polo2Bam_72, SeaLumen_70,

Genes that do not have the "Most Annotated" start:

- Banquo_50, DillyDally_46, DinoDaryn_52, Gilgamesh_151, Gingerbug_57, Goib_52, Huffy_52, JrWilcox_102, Schmidt_45, Splinter_51, TZGordon_53, TinaLin_50, Tonitrus_70, Vendetta_51,

Summary by start number:

Start 8:

- Found in 4 of 41 (9.8%) of genes in pham
- No Manual Annotations of this start.
- Called 75.0% of time when present
- Phage (with cluster) where this start called: Enzomatic_73 (F1), Polo2Bam_72 (F1), SeaLumen_70 (F1),

Start 13:

- Found in 1 of 41 (2.4%) of genes in pham
- Manual Annotations of this start: 1 of 35
- Called 100.0% of time when present
- Phage (with cluster) where this start called: DillyDally_46 (singleton),

Start 19:

- Found in 1 of 41 (2.4%) of genes in pham
- No Manual Annotations of this start.
- Called 100.0% of time when present
- Phage (with cluster) where this start called: JrWilcox_102 (GL),

Start 20:

- Found in 1 of 41 (2.4%) of genes in pham
- Manual Annotations of this start: 1 of 35
- Called 100.0% of time when present
- Phage (with cluster) where this start called: Gilgamesh_151 (singleton),

Start 21:

- Found in 27 of 41 (65.9%) of genes in pham
- Manual Annotations of this start: 22 of 35
- Called 88.9% of time when present
- Phage (with cluster) where this start called: Argie_53 (W), Cepens_52 (W), D12_51 (W), Dardanus_46 (CU3), Dorothy_64 (F1), GodPhather_53 (W), Jeon_52 (W), Job42_68 (F1), KingMidas_65 (F1), Leozinho_66 (F1), MadMen_67 (F1), Medindi_61 (F1), Megabear_52 (W), MooMoo_66 (singleton), NewHope4_67 (F1), PR_52 (W), RedBird_64 (F1), Sassafras_64 (F1), Scottish_64 (F1), SilverChicken_75 (F2), Squirty_67 (F3), Stap_63 (F1), TDanisky_72 (F1), Taptic_52 (W),

Start 22:

- Found in 9 of 41 (22.0%) of genes in pham
- Manual Annotations of this start: 9 of 35
- Called 100.0% of time when present

- Phage (with cluster) where this start called: Banquo_50 (CU1), DinoDaryn_52 (CU1), Goib_52 (CU1), Huff_52 (CU1), Schmidt_45 (CU4), Splinter_51 (CU1), TZGordon_53 (CU1), TinaLin_50 (CU1), Vendetta_51 (CU1),

Start 23:

- Found in 1 of 41 (2.4%) of genes in pham
- Manual Annotations of this start: 1 of 35
- Called 100.0% of time when present
- Phage (with cluster) where this start called: Tonitrus_70 (singleton),

Start 24:

- Found in 1 of 41 (2.4%) of genes in pham
- Manual Annotations of this start: 1 of 35
- Called 100.0% of time when present
- Phage (with cluster) where this start called: Gingerbug_57 (GF),

Summary by clusters:

There are 10 clusters represented in this pham: F1, F2, CU4, CU3, CU1, singleton, GF, F3, W, GL,

Info for manual annotations of cluster CU1:

- Start number 22 was manually annotated 8 times for cluster CU1.

Info for manual annotations of cluster CU3:

- Start number 21 was manually annotated 1 time for cluster CU3.

Info for manual annotations of cluster CU4:

- Start number 22 was manually annotated 1 time for cluster CU4.

Info for manual annotations of cluster F1:

- Start number 21 was manually annotated 11 times for cluster F1.

Info for manual annotations of cluster F3:

- Start number 21 was manually annotated 1 time for cluster F3.

Info for manual annotations of cluster GF:

- Start number 24 was manually annotated 1 time for cluster GF.

Info for manual annotations of cluster W:

- Start number 21 was manually annotated 8 times for cluster W.

Gene Information:

Gene: Argie_53 Start: 44207, Stop: 44548, Start Num: 21

Candidate Starts for Argie_53:

(Start: 21 @44207 has 22 MA's), (29, 44261), (31, 44276), (33, 44294), (41, 44360), (45, 44378), (50, 44432), (55, 44477), (58, 44498), (61, 44522), (62, 44525),

Gene: Banquo_50 Start: 32516, Stop: 32896, Start Num: 22
Candidate Starts for Banquo_50:
(Start: 22 @32516 has 9 MA's), (30, 32579), (37, 32639), (51, 32756), (55, 32795), (60, 32822), (66, 32864),

Gene: Cepens_52 Start: 43922, Stop: 44263, Start Num: 21
Candidate Starts for Cepens_52:
(Start: 21 @43922 has 22 MA's), (29, 43976), (31, 43991), (33, 44009), (41, 44075), (45, 44093), (50, 44147), (55, 44192), (58, 44213), (61, 44237), (62, 44240),

Gene: D12_51 Start: 44470, Stop: 44811, Start Num: 21
Candidate Starts for D12_51:
(Start: 21 @44470 has 22 MA's), (29, 44524), (31, 44539), (33, 44557), (41, 44623), (45, 44641), (50, 44695), (55, 44740), (58, 44761), (61, 44785), (62, 44788),

Gene: Dardanus_46 Start: 31283, Stop: 31621, Start Num: 21
Candidate Starts for Dardanus_46:
(2, 31163), (18, 31274), (Start: 21 @31283 has 22 MA's), (37, 31409), (40, 31439), (45, 31460), (61, 31610),

Gene: DillyDally_46 Start: 29839, Stop: 30222, Start Num: 13
Candidate Starts for DillyDally_46:
(7, 29803), (Start: 13 @29839 has 1 MA's), (17, 29875), (32, 29980), (39, 30016), (40, 30034), (43, 30040), (47, 30049), (54, 30124), (63, 30184),

Gene: DinoDaryn_52 Start: 33048, Stop: 33431, Start Num: 22
Candidate Starts for DinoDaryn_52:
(Start: 22 @33048 has 9 MA's), (37, 33171), (60, 33354), (66, 33396),

Gene: Dorothy_64 Start: 42261, Stop: 42623, Start Num: 21
Candidate Starts for Dorothy_64:
(4, 42156), (5, 42162), (14, 42216), (Start: 21 @42261 has 22 MA's), (26, 42294), (48, 42465), (58, 42561), (59, 42564), (65, 42606),

Gene: Enzomatic_73 Start: 42241, Stop: 42768, Start Num: 8
Candidate Starts for Enzomatic_73:
(8, 42241), (10, 42250), (15, 42283), (Start: 21 @42319 has 22 MA's), (58, 42619),

Gene: Gilgamesh_151 Start: 125936, Stop: 126292, Start Num: 20
Candidate Starts for Gilgamesh_151:
(11, 125873), (Start: 20 @125936 has 1 MA's), (26, 125972), (34, 126053), (37, 126065), (45, 126116), (51, 126182), (60, 126242), (61, 126260), (64, 126275),

Gene: Gingerbug_57 Start: 33770, Stop: 34138, Start Num: 24
Candidate Starts for Gingerbug_57:
(Start: 24 @33770 has 1 MA's), (27, 33791), (35, 33872), (49, 33980),

Gene: GodPhather_53 Start: 44710, Stop: 45051, Start Num: 21
Candidate Starts for GodPhather_53:
(Start: 21 @44710 has 22 MA's), (29, 44764), (31, 44779), (33, 44797), (41, 44863), (45, 44881), (50, 44935), (55, 44980), (58, 45001), (61, 45025), (62, 45028),

Gene: Goib_52 Start: 33585, Stop: 33968, Start Num: 22

Candidate Starts for Goib_52:

(Start: 22 @33585 has 9 MA's), (37, 33708), (60, 33891), (66, 33933),

Gene: Huffu_52 Start: 33048, Stop: 33431, Start Num: 22

Candidate Starts for Huffu_52:

(Start: 22 @33048 has 9 MA's), (37, 33171), (60, 33354), (66, 33396),

Gene: Jeon_52 Start: 44452, Stop: 44793, Start Num: 21

Candidate Starts for Jeon_52:

(Start: 21 @44452 has 22 MA's), (29, 44506), (31, 44521), (33, 44539), (41, 44605), (45, 44623), (50, 44677), (55, 44722), (58, 44743), (61, 44767), (62, 44770),

Gene: Job42_68 Start: 44715, Stop: 45080, Start Num: 21

Candidate Starts for Job42_68:

(3, 44598), (Start: 21 @44715 has 22 MA's), (36, 44841), (38, 44847), (46, 44901), (47, 44904), (58, 45018), (59, 45021), (65, 45063),

Gene: JrWilcox_102 Start: 57042, Stop: 57449, Start Num: 19

Candidate Starts for JrWilcox_102:

(9, 56964), (16, 57027), (19, 57042), (26, 57078), (28, 57087), (56, 57342),

Gene: KingMidas_65 Start: 43159, Stop: 43521, Start Num: 21

Candidate Starts for KingMidas_65:

(4, 43054), (5, 43060), (14, 43114), (Start: 21 @43159 has 22 MA's), (26, 43192), (48, 43363), (58, 43459), (59, 43462), (65, 43504),

Gene: Leozinho_66 Start: 42196, Stop: 42552, Start Num: 21

Candidate Starts for Leozinho_66:

(Start: 21 @42196 has 22 MA's), (25, 42217), (26, 42223), (31, 42265), (44, 42367), (53, 42457), (58, 42490), (65, 42535),

Gene: MadMen_67 Start: 43664, Stop: 44020, Start Num: 21

Candidate Starts for MadMen_67:

(Start: 21 @43664 has 22 MA's), (25, 43685), (26, 43691), (31, 43733), (44, 43835), (53, 43925), (58, 43958), (65, 44003),

Gene: Medindi_61 Start: 39515, Stop: 39877, Start Num: 21

Candidate Starts for Medindi_61:

(Start: 21 @39515 has 22 MA's), (26, 39548), (48, 39719), (58, 39815), (59, 39818), (65, 39860),

Gene: Megabear_52 Start: 43843, Stop: 44184, Start Num: 21

Candidate Starts for Megabear_52:

(Start: 21 @43843 has 22 MA's), (29, 43897), (31, 43912), (33, 43930), (41, 43996), (45, 44014), (50, 44068), (55, 44113), (58, 44134), (61, 44158), (62, 44161),

Gene: MooMoo_66 Start: 43589, Stop: 43945, Start Num: 21

Candidate Starts for MooMoo_66:

(Start: 21 @43589 has 22 MA's), (25, 43610), (26, 43616), (31, 43658), (37, 43712), (44, 43760), (52, 43838), (53, 43850), (58, 43883), (61, 43907), (67, 43937),

Gene: NewHope4_67 Start: 42465, Stop: 42914, Start Num: 21

Candidate Starts for NewHope4_67:

(8, 42387), (10, 42396), (15, 42429), (Start: 21 @42465 has 22 MA's), (58, 42765),

Gene: PR_52 Start: 44447, Stop: 44788, Start Num: 21

Candidate Starts for PR_52:

(Start: 21 @44447 has 22 MA's), (29, 44501), (31, 44516), (33, 44534), (41, 44600), (45, 44618), (50, 44672), (55, 44717), (58, 44738), (61, 44762), (62, 44765),

Gene: Polo2Bam_72 Start: 42241, Stop: 42768, Start Num: 8

Candidate Starts for Polo2Bam_72:

(8, 42241), (10, 42250), (15, 42283), (Start: 21 @42319 has 22 MA's), (58, 42619),

Gene: RedBird_64 Start: 42140, Stop: 42502, Start Num: 21

Candidate Starts for RedBird_64:

(4, 42035), (5, 42041), (14, 42095), (Start: 21 @42140 has 22 MA's), (26, 42173), (48, 42344), (58, 42440), (59, 42443), (65, 42485),

Gene: Sassafras_64 Start: 42458, Stop: 42820, Start Num: 21

Candidate Starts for Sassafras_64:

(4, 42353), (5, 42359), (14, 42413), (Start: 21 @42458 has 22 MA's), (26, 42491), (48, 42662), (58, 42758), (59, 42761), (65, 42803),

Gene: Schmidt_45 Start: 30353, Stop: 30685, Start Num: 22

Candidate Starts for Schmidt_45:

(1, 30221), (6, 30251), (12, 30290), (Start: 22 @30353 has 9 MA's), (27, 30386), (37, 30476), (45, 30527), (57, 30644), (59, 30650), (61, 30671),

Gene: Scottish_64 Start: 42414, Stop: 42776, Start Num: 21

Candidate Starts for Scottish_64:

(4, 42309), (5, 42315), (14, 42369), (Start: 21 @42414 has 22 MA's), (26, 42447), (58, 42714), (59, 42717), (65, 42759),

Gene: SeaLumen_70 Start: 42241, Stop: 42768, Start Num: 8

Candidate Starts for SeaLumen_70:

(8, 42241), (10, 42250), (15, 42283), (Start: 21 @42319 has 22 MA's), (58, 42619),

Gene: SilverChicken_75 Start: 42112, Stop: 42474, Start Num: 21

Candidate Starts for SilverChicken_75:

(Start: 21 @42112 has 22 MA's), (48, 42316), (58, 42412), (59, 42415), (65, 42457),

Gene: Splinter_51 Start: 33608, Stop: 33991, Start Num: 22

Candidate Starts for Splinter_51:

(Start: 22 @33608 has 9 MA's), (37, 33731), (60, 33914), (66, 33956),

Gene: Squirty_67 Start: 43396, Stop: 43758, Start Num: 21

Candidate Starts for Squirty_67:

(Start: 21 @43396 has 22 MA's), (26, 43429), (48, 43600), (58, 43696), (59, 43699), (65, 43741),

Gene: Stap_63 Start: 42347, Stop: 42709, Start Num: 21

Candidate Starts for Stap_63:

(4, 42242), (5, 42248), (14, 42302), (Start: 21 @42347 has 22 MA's), (26, 42380), (40, 42506), (58, 42647), (59, 42650), (65, 42692),

Gene: TDanisky_72 Start: 43265, Stop: 43606, Start Num: 21

Candidate Starts for TDanisky_72:

(Start: 21 @43265 has 22 MA's), (40, 43424),

Gene: TZGordon_53 Start: 32954, Stop: 33337, Start Num: 22

Candidate Starts for TZGordon_53:

(Start: 22 @32954 has 9 MA's), (37, 33077), (60, 33260), (66, 33302),

Gene: Taptic_52 Start: 43843, Stop: 44184, Start Num: 21

Candidate Starts for Taptic_52:

(Start: 21 @43843 has 22 MA's), (29, 43897), (31, 43912), (33, 43930), (41, 43996), (45, 44014), (50, 44068), (55, 44113), (58, 44134), (61, 44158), (62, 44161),

Gene: TinaLin_50 Start: 32410, Stop: 32790, Start Num: 22

Candidate Starts for TinaLin_50:

(Start: 22 @32410 has 9 MA's), (30, 32473), (37, 32533), (51, 32650), (55, 32689), (60, 32716), (66, 32758),

Gene: Tonitrus_70 Start: 51892, Stop: 52272, Start Num: 23

Candidate Starts for Tonitrus_70:

(Start: 23 @51892 has 1 MA's), (41, 52051), (42, 52063), (51, 52135),

Gene: Vendetta_51 Start: 33608, Stop: 33991, Start Num: 22

Candidate Starts for Vendetta_51:

(Start: 22 @33608 has 9 MA's), (37, 33731), (60, 33914), (66, 33956),