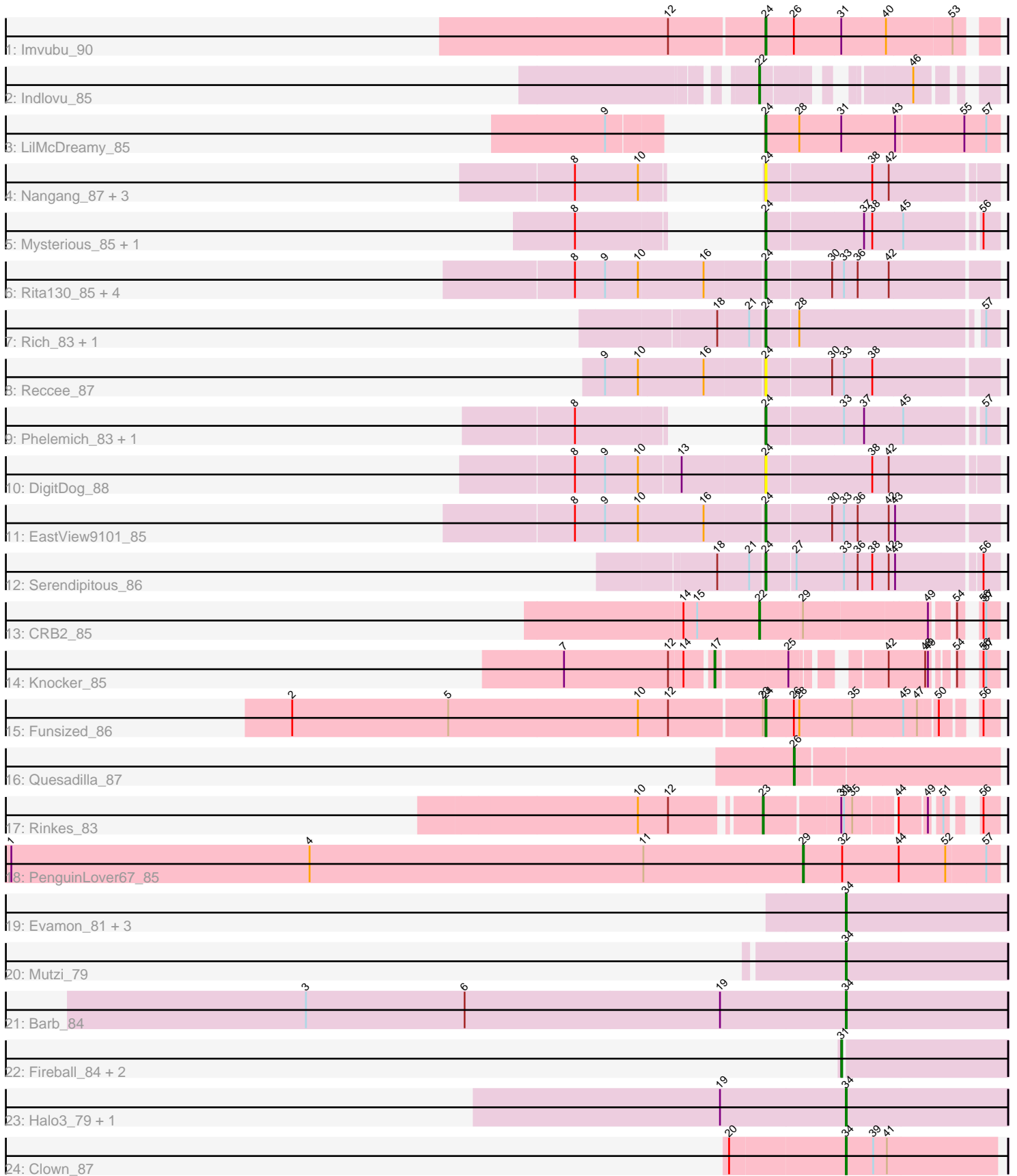


Pham 294887



Note: Tracks are now grouped by subcluster and scaled. Switching in subcluster is indicated by changes in track color. Track scale is now set by default to display the region 30 bp upstream of start 1 to 30 bp downstream of the last possible start. If this default region is judged to be packed too tightly with annotated starts, the track will be further scaled to only show that region of the ORF with annotated starts. This action will be indicated by adding "Zoomed" to the title. For starts, yellow indicates the location of called starts comprised solely of Glimmer/GeneMark auto-annotations, green indicates the location of called starts with at least 1 manual gene annotation.

Pham 294887 Report

This analysis was run 04/18/26 on database version 643.

Pham number 294887 has 40 members, 9 are drafts.

Phages represented in each track:

- Track 1 : Imvubu_90
- Track 2 : Indlovu_85
- Track 3 : LilMcDreamy_85
- Track 4 : Nangang_87, Shenyu_87, StinkyVeggy_84, KarasumaRum_84
- Track 5 : Mysterious_85, Nehemiah_85
- Track 6 : Rita130_85, Donny_86, Acadian_86, SirJeffery_84, Suigeneris_87
- Track 7 : Rich_83, Bae_84
- Track 8 : Reccee_87
- Track 9 : Phelemich_83, Reprobate_85
- Track 10 : DigitDog_88
- Track 11 : EastView9101_85
- Track 12 : Serendipitous_86
- Track 13 : CRB2_85
- Track 14 : Knocker_85
- Track 15 : Funsized_86
- Track 16 : Quesadilla_87
- Track 17 : Rinkes_83
- Track 18 : PenguinLover67_85
- Track 19 : Evamon_81, SmokingBunny_82, Salvador_81, Togo_81
- Track 20 : Mutzi_79
- Track 21 : Barb_84
- Track 22 : Fireball_84, TillyBobJoe_79, Nubi_83
- Track 23 : Halo3_79, CoveyB_82
- Track 24 : Clown_87

Summary of Final Annotations (See graph section above for start numbers):

The start number called the most often in the published annotations is 24, it was called in 13 of the 31 non-draft genes in the pham.

Genes that call this "Most Annotated" start:

- Acadian_86, Bae_84, DigitDog_88, Donny_86, EastView9101_85, Funsized_86, Imvubu_90, KarasumaRum_84, LilMcDreamy_85, Mysterious_85, Nangang_87, Nehemiah_85, Phelemich_83, Reccee_87, Reprobate_85, Rich_83, Rita130_85,

Serendipitous_86, Shenyu_87, SirJeffery_84, StinkyVeggy_84, Suigeneris_87,

Genes that have the "Most Annotated" start but do not call it:

-

Genes that do not have the "Most Annotated" start:

- Barb_84, CRB2_85, Clown_87, CoveyB_82, Evamon_81, Fireball_84, Halo3_79, Indlovu_85, Knocker_85, Mutzi_79, Nubi_83, PenguinLover67_85, Quesadilla_87, Rinkes_83, Salvador_81, SmokingBunny_82, TillyBobJoe_79, Togo_81,

Summary by start number:

Start 17:

- Found in 1 of 40 (2.5%) of genes in pham
- Manual Annotations of this start: 1 of 31
- Called 100.0% of time when present
- Phage (with cluster) where this start called: Knocker_85 (B9),

Start 22:

- Found in 2 of 40 (5.0%) of genes in pham
- Manual Annotations of this start: 2 of 31
- Called 100.0% of time when present
- Phage (with cluster) where this start called: CRB2_85 (B9), Indlovu_85 (B11),

Start 23:

- Found in 2 of 40 (5.0%) of genes in pham
- Manual Annotations of this start: 1 of 31
- Called 50.0% of time when present
- Phage (with cluster) where this start called: Rinkes_83 (B9),

Start 24:

- Found in 22 of 40 (55.0%) of genes in pham
- Manual Annotations of this start: 13 of 31
- Called 100.0% of time when present
- Phage (with cluster) where this start called: Acadian_86 (B5), Bae_84 (B5), DigitDog_88 (B5), Donny_86 (B5), EastView9101_85 (B5), Funsized_86 (B9), Imvubu_90 (B10), KarasumaRum_84 (B5), LilMcDreamy_85 (B12), Mysterious_85 (B5), Nangang_87 (B5), Nehemiah_85 (B5), Phelemich_83 (B5), Reccee_87 (B5), Reprobate_85 (B5), Rich_83 (B5), Rita130_85 (B5), Serendipitous_86 (B5), Shenyu_87 (B5), SirJeffery_84 (B5), StinkyVeggy_84 (B5), Suigeneris_87 (B5),

Start 26:

- Found in 3 of 40 (7.5%) of genes in pham
- Manual Annotations of this start: 1 of 31
- Called 33.3% of time when present
- Phage (with cluster) where this start called: Quesadilla_87 (B9),

Start 29:

- Found in 2 of 40 (5.0%) of genes in pham
- Manual Annotations of this start: 1 of 31
- Called 50.0% of time when present
- Phage (with cluster) where this start called: PenguinLover67_85 (B9),

Start 31:

- Found in 6 of 40 (15.0%) of genes in pham
- Manual Annotations of this start: 3 of 31
- Called 50.0% of time when present
- Phage (with cluster) where this start called: Fireball_84 (DC1), Nubi_83 (DC1), TillyBobJoe_79 (DC1),

Start 34:

- Found in 9 of 40 (22.5%) of genes in pham
- Manual Annotations of this start: 9 of 31
- Called 100.0% of time when present
- Phage (with cluster) where this start called: Barb_84 (DC1), Clown_87 (DC2), CoveyB_82 (DC1), Evamon_81 (DC1), Halo3_79 (DC1), Mutzi_79 (DC1), Salvador_81 (DC1), SmokingBunny_82 (DC1), Togo_81 (DC1),

Summary by clusters:

There are 7 clusters represented in this pham: B5, B12, B10, B11, DC2, B9, DC1,

Info for manual annotations of cluster B10:

- Start number 24 was manually annotated 1 time for cluster B10.

Info for manual annotations of cluster B11:

- Start number 22 was manually annotated 1 time for cluster B11.

Info for manual annotations of cluster B12:

- Start number 24 was manually annotated 1 time for cluster B12.

Info for manual annotations of cluster B5:

- Start number 24 was manually annotated 10 times for cluster B5.

Info for manual annotations of cluster B9:

- Start number 17 was manually annotated 1 time for cluster B9.
- Start number 22 was manually annotated 1 time for cluster B9.
- Start number 23 was manually annotated 1 time for cluster B9.
- Start number 24 was manually annotated 1 time for cluster B9.
- Start number 26 was manually annotated 1 time for cluster B9.
- Start number 29 was manually annotated 1 time for cluster B9.

Info for manual annotations of cluster DC1:

- Start number 31 was manually annotated 3 times for cluster DC1.
- Start number 34 was manually annotated 8 times for cluster DC1.

Info for manual annotations of cluster DC2:

- Start number 34 was manually annotated 1 time for cluster DC2.

Gene Information:

Gene: Acadian_86 Start: 64696, Stop: 64454, Start Num: 24

Candidate Starts for Acadian_86:

(8, 64897), (9, 64864), (10, 64828), (16, 64759), (Start: 24 @64696 has 13 MA's), (30, 64627), (33, 64615), (36, 64600), (42, 64567),

Gene: Bae_84 Start: 65056, Stop: 64823, Start Num: 24

Candidate Starts for Bae_84:

(18, 65104), (21, 65071), (Start: 24 @65056 has 13 MA's), (28, 65023), (57, 64837),

Gene: Barb_84 Start: 53980, Stop: 54156, Start Num: 34

Candidate Starts for Barb_84:

(3, 53392), (6, 53566), (19, 53845), (Start: 34 @53980 has 9 MA's),

Gene: CRB2_85 Start: 66826, Stop: 66605, Start Num: 22

Candidate Starts for CRB2_85:

(14, 66907), (15, 66892), (Start: 22 @66826 has 2 MA's), (Start: 29 @66781 has 1 MA's), (49, 66652), (54, 66634), (56, 66622), (57, 66619),

Gene: Clown_87 Start: 55358, Stop: 55522, Start Num: 34

Candidate Starts for Clown_87:

(20, 55235), (Start: 34 @55358 has 9 MA's), (39, 55388), (41, 55403),

Gene: CoveyB_82 Start: 53467, Stop: 53643, Start Num: 34

Candidate Starts for CoveyB_82:

(19, 53332), (Start: 34 @53467 has 9 MA's),

Gene: DigitDog_88 Start: 65196, Stop: 64957, Start Num: 24

Candidate Starts for DigitDog_88:

(8, 65397), (9, 65364), (10, 65328), (13, 65286), (Start: 24 @65196 has 13 MA's), (38, 65085), (42, 65067),

Gene: Donny_86 Start: 64530, Stop: 64288, Start Num: 24

Candidate Starts for Donny_86:

(8, 64731), (9, 64698), (10, 64662), (16, 64593), (Start: 24 @64530 has 13 MA's), (30, 64461), (33, 64449), (36, 64434), (42, 64401),

Gene: EastView9101_85 Start: 64441, Stop: 64199, Start Num: 24

Candidate Starts for EastView9101_85:

(8, 64642), (9, 64609), (10, 64573), (16, 64504), (Start: 24 @64441 has 13 MA's), (30, 64372), (33, 64360), (36, 64345), (42, 64312), (43, 64306),

Gene: Evamon_81 Start: 53374, Stop: 53550, Start Num: 34

Candidate Starts for Evamon_81:

(Start: 34 @53374 has 9 MA's),

Gene: Fireball_84 Start: 53836, Stop: 54012, Start Num: 31

Candidate Starts for Fireball_84:

(Start: 31 @53836 has 3 MA's),

Gene: Funsized_86 Start: 67570, Stop: 67346, Start Num: 24

Candidate Starts for Funsized_86:

(2, 68083), (5, 67912), (10, 67705), (12, 67672), (Start: 23 @67573 has 1 MA's), (Start: 24 @67570 has 13 MA's), (Start: 26 @67540 has 1 MA's), (28, 67534), (35, 67477), (45, 67423), (47, 67408), (50, 67390), (56, 67363),

Gene: Halo3_79 Start: 53805, Stop: 53981, Start Num: 34

Candidate Starts for Halo3_79:

(19, 53670), (Start: 34 @53805 has 9 MA's),

Gene: Imvubu_90 Start: 65577, Stop: 65344, Start Num: 24

Candidate Starts for Imvubu_90:

(12, 65679), (Start: 24 @65577 has 13 MA's), (Start: 26 @65547 has 1 MA's), (Start: 31 @65496 has 3 MA's), (40, 65448), (53, 65379),

Gene: Indlovu_85 Start: 66174, Stop: 65995, Start Num: 22

Candidate Starts for Indlovu_85:

(Start: 22 @66174 has 2 MA's), (46, 66054),

Gene: KarasumaRum_84 Start: 64594, Stop: 64355, Start Num: 24

Candidate Starts for KarasumaRum_84:

(8, 64690), (10, 64621), (Start: 24 @64594 has 13 MA's), (38, 64483), (42, 64465),

Gene: Knocker_85 Start: 66543, Stop: 66316, Start Num: 17

Candidate Starts for Knocker_85:

(7, 66699), (12, 66585), (14, 66570), (Start: 17 @66543 has 1 MA's), (25, 66474), (42, 66402), (48, 66363), (49, 66360), (54, 66345), (56, 66333), (57, 66330),

Gene: LilMcDreamy_85 Start: 64982, Stop: 64734, Start Num: 24

Candidate Starts for LilMcDreamy_85:

(9, 65042), (Start: 24 @64982 has 13 MA's), (28, 64946), (Start: 31 @64901 has 3 MA's), (43, 64844), (55, 64772), (57, 64748),

Gene: Mutzi_79 Start: 53940, Stop: 54116, Start Num: 34

Candidate Starts for Mutzi_79:

(Start: 34 @53940 has 9 MA's),

Gene: Mysterious_85 Start: 64739, Stop: 64503, Start Num: 24

Candidate Starts for Mysterious_85:

(8, 64835), (Start: 24 @64739 has 13 MA's), (37, 64637), (38, 64628), (45, 64595), (56, 64520),

Gene: Nangang_87 Start: 65197, Stop: 64958, Start Num: 24

Candidate Starts for Nangang_87:

(8, 65293), (10, 65224), (Start: 24 @65197 has 13 MA's), (38, 65086), (42, 65068),

Gene: Nehemiah_85 Start: 64619, Stop: 64383, Start Num: 24

Candidate Starts for Nehemiah_85:

(8, 64715), (Start: 24 @64619 has 13 MA's), (37, 64517), (38, 64508), (45, 64475), (56, 64400),

Gene: Nubi_83 Start: 53251, Stop: 53427, Start Num: 31

Candidate Starts for Nubi_83:

(Start: 31 @53251 has 3 MA's),

Gene: PenguinLover67_85 Start: 64569, Stop: 64360, Start Num: 29

Candidate Starts for PenguinLover67_85:

(1, 65436), (4, 65109), (11, 64743), (Start: 29 @64569 has 1 MA's), (32, 64527), (44, 64467), (52, 64416), (57, 64374),

Gene: Phelemich_83 Start: 64664, Stop: 64428, Start Num: 24

Candidate Starts for Phelemich_83:

(8, 64760), (Start: 24 @64664 has 13 MA's), (33, 64583), (37, 64562), (45, 64520), (57, 64442),

Gene: Quesadilla_87 Start: 65727, Stop: 65512, Start Num: 26

Candidate Starts for Quesadilla_87:

(Start: 26 @65727 has 1 MA's),

Gene: Reccee_87 Start: 65000, Stop: 64758, Start Num: 24

Candidate Starts for Reccee_87:

(9, 65168), (10, 65132), (16, 65063), (Start: 24 @65000 has 13 MA's), (30, 64931), (33, 64919), (38, 64889),

Gene: Reprobate_85 Start: 64669, Stop: 64433, Start Num: 24

Candidate Starts for Reprobate_85:

(8, 64765), (Start: 24 @64669 has 13 MA's), (33, 64588), (37, 64567), (45, 64525), (57, 64447),

Gene: Rich_83 Start: 65123, Stop: 64890, Start Num: 24

Candidate Starts for Rich_83:

(18, 65171), (21, 65138), (Start: 24 @65123 has 13 MA's), (28, 65090), (57, 64904),

Gene: Rinkes_83 Start: 65423, Stop: 65226, Start Num: 23

Candidate Starts for Rinkes_83:

(10, 65543), (12, 65510), (Start: 23 @65423 has 1 MA's), (Start: 31 @65348 has 3 MA's), (33, 65345), (35, 65336), (44, 65297), (49, 65270), (51, 65261), (56, 65243),

Gene: Rita130_85 Start: 64670, Stop: 64428, Start Num: 24

Candidate Starts for Rita130_85:

(8, 64871), (9, 64838), (10, 64802), (16, 64733), (Start: 24 @64670 has 13 MA's), (30, 64601), (33, 64589), (36, 64574), (42, 64541),

Gene: Salvador_81 Start: 53372, Stop: 53548, Start Num: 34

Candidate Starts for Salvador_81:

(Start: 34 @53372 has 9 MA's),

Gene: Serendipitous_86 Start: 64542, Stop: 64303, Start Num: 24

Candidate Starts for Serendipitous_86:

(18, 64590), (21, 64557), (Start: 24 @64542 has 13 MA's), (27, 64512), (33, 64461), (36, 64446), (38, 64431), (42, 64413), (43, 64407), (56, 64320),

Gene: Shenyu_87 Start: 65195, Stop: 64974, Start Num: 24

Candidate Starts for Shenyu_87:

(8, 65291), (10, 65222), (Start: 24 @65195 has 13 MA's), (38, 65084), (42, 65066),

Gene: SirJeffery_84 Start: 64480, Stop: 64238, Start Num: 24

Candidate Starts for SirJeffery_84:

(8, 64681), (9, 64648), (10, 64612), (16, 64543), (Start: 24 @64480 has 13 MA's), (30, 64411), (33, 64399), (36, 64384), (42, 64351),

Gene: SmokingBunny_82 Start: 54368, Stop: 54544, Start Num: 34

Candidate Starts for SmokingBunny_82:

(Start: 34 @54368 has 9 MA's),

Gene: StinkyVeggy_84 Start: 64594, Stop: 64355, Start Num: 24

Candidate Starts for StinkyVeggy_84:

(8, 64690), (10, 64621), (Start: 24 @64594 has 13 MA's), (38, 64483), (42, 64465),

Gene: Suigeneris_87 Start: 64918, Stop: 64676, Start Num: 24

Candidate Starts for Suigeneris_87:

(8, 65119), (9, 65086), (10, 65050), (16, 64981), (Start: 24 @64918 has 13 MA's), (30, 64849), (33, 64837), (36, 64822), (42, 64789),

Gene: TillyBobJoe_79 Start: 53254, Stop: 53430, Start Num: 31

Candidate Starts for TillyBobJoe_79:

(Start: 31 @53254 has 3 MA's),

Gene: Togo_81 Start: 54368, Stop: 54544, Start Num: 34

Candidate Starts for Togo_81:

(Start: 34 @54368 has 9 MA's),