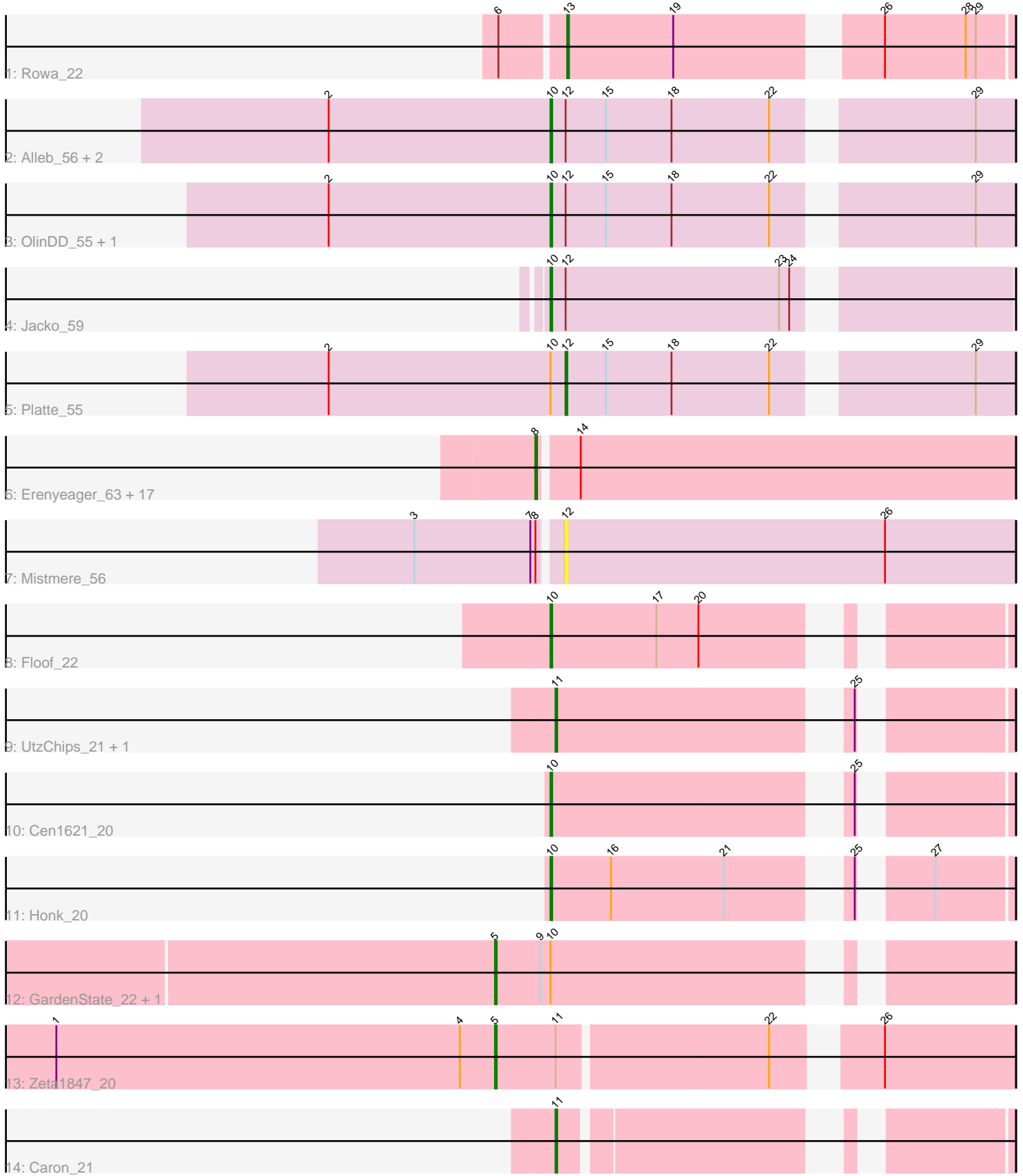


Pham 294913



Note: Tracks are now grouped by subcluster and scaled. Switching in subcluster is indicated by changes in track color. Track scale is now set by default to display the region 30 bp upstream of start 1 to 30 bp downstream of the last possible start. If this default region is judged to be packed too tightly with annotated starts, the track will be further scaled to only show that region of the ORF with annotated starts. This action will be indicated by adding "Zoomed" to the title. For starts, yellow indicates the location of called starts comprised solely of Glimmer/GeneMark auto-annotations, green indicates the location of called starts with at least 1 manual gene annotation.

Pham 294913 Report

This analysis was run 04/18/26 on database version 643.

Pham number 294913 has 36 members, 7 are drafts.

Phages represented in each track:

- Track 1 : Rowa_22
- Track 2 : Alleb_56, Pioneer3_55, Tandem_55
- Track 3 : OlinDD_55, Hortus1_55
- Track 4 : Jacko_59
- Track 5 : Platte_55
- Track 6 : Erenyeager_63, SteakFry_116, Necrophoxinus_65, Welcome_64, Casablanacas_64, DustyDino_66, HollowPurple_64, Deschain_64, Lyell_63, RunningBrook_64, StevieWelch_63, SteakFry_62, Shroomer_66, Yuma_62, Issa7_62, Fork_59, ASegato_62, Musetta_63
- Track 7 : Mistmere_56
- Track 8 : Floof_22
- Track 9 : UtzChips_21, Barnstormer_21
- Track 10 : Cen1621_20
- Track 11 : Honk_20
- Track 12 : GardenState_22, IAmGroot_22
- Track 13 : Zeta1847_20
- Track 14 : Caron_21

Summary of Final Annotations (See graph section above for start numbers):

The start number called the most often in the published annotations is 8, it was called in 12 of the 29 non-draft genes in the pham.

Genes that call this "Most Annotated" start:

- ASegato_62, Casablanacas_64, Deschain_64, DustyDino_66, Erenyeager_63, Fork_59, HollowPurple_64, Issa7_62, Lyell_63, Musetta_63, Necrophoxinus_65, RunningBrook_64, Shroomer_66, SteakFry_116, SteakFry_62, StevieWelch_63, Welcome_64, Yuma_62,

Genes that have the "Most Annotated" start but do not call it:

- Mistmere_56,

Genes that do not have the "Most Annotated" start:

- Alleb_56, Barnstormer_21, Caron_21, Cen1621_20, Floof_22, GardenState_22, Honk_20, Hortus1_55, IAmGroot_22, Jacko_59, OlinDD_55, Pioneer3_55, Platte_55, Rowa_22, Tandem_55, UtzChips_21, Zeta1847_20,

Summary by start number:

Start 5:

- Found in 3 of 36 (8.3%) of genes in pham
- Manual Annotations of this start: 3 of 29
- Called 100.0% of time when present
- Phage (with cluster) where this start called: GardenState_22 (EH), IAmGroot_22 (EH), Zeta1847_20 (EH),

Start 8:

- Found in 19 of 36 (52.8%) of genes in pham
- Manual Annotations of this start: 12 of 29
- Called 94.7% of time when present
- Phage (with cluster) where this start called: ASegato_62 (ED2), Casablanacas_64 (ED2), Deschain_64 (ED2), DustyDino_66 (ED2), Erenyeager_63 (ED2), Fork_59 (ED2), HollowPurple_64 (ED2), Issa7_62 (ED2), Lyell_63 (ED2), Musetta_63 (ED2), Necrophoxinus_65 (ED2), RunningBrook_64 (ED2), Shroomer_66 (ED2), SteakFry_116 (ED2), SteakFry_62 (ED2), StevieWelch_63 (ED2), Welcome_64 (ED2), Yuma_62 (ED2),

Start 10:

- Found in 12 of 36 (33.3%) of genes in pham
- Manual Annotations of this start: 9 of 29
- Called 75.0% of time when present
- Phage (with cluster) where this start called: Alleb_56 (ED1), Cen1621_20 (EH), Floof_22 (EH), Honk_20 (EH), Hortus1_55 (ED1), Jacko_59 (ED1), OlinDD_55 (ED1), Pioneer3_55 (ED1), Tandem_55 (ED1),

Start 11:

- Found in 4 of 36 (11.1%) of genes in pham
- Manual Annotations of this start: 3 of 29
- Called 75.0% of time when present
- Phage (with cluster) where this start called: Barnstormer_21 (EH), Caron_21 (EH), UtzChips_21 (EH),

Start 12:

- Found in 8 of 36 (22.2%) of genes in pham
- Manual Annotations of this start: 1 of 29
- Called 25.0% of time when present
- Phage (with cluster) where this start called: Mistmere_56 (ED3), Platte_55 (ED1),

Start 13:

- Found in 1 of 36 (2.8%) of genes in pham
- Manual Annotations of this start: 1 of 29
- Called 100.0% of time when present
- Phage (with cluster) where this start called: Rowa_22 (BL),

Summary by clusters:

There are 5 clusters represented in this pham: ED2, BL, ED1, EH, ED3,

Info for manual annotations of cluster BL:

- Start number 13 was manually annotated 1 time for cluster BL.

Info for manual annotations of cluster ED1:

- Start number 10 was manually annotated 6 times for cluster ED1.
- Start number 12 was manually annotated 1 time for cluster ED1.

Info for manual annotations of cluster ED2:

- Start number 8 was manually annotated 12 times for cluster ED2.

Info for manual annotations of cluster EH:

- Start number 5 was manually annotated 3 times for cluster EH.
- Start number 10 was manually annotated 3 times for cluster EH.
- Start number 11 was manually annotated 3 times for cluster EH.

Gene Information:

Gene: ASegato_62 Start: 35643, Stop: 35921, Start Num: 8

Candidate Starts for ASegato_62:

(Start: 8 @35643 has 12 MA's), (14, 35664),

Gene: Alleb_56 Start: 35613, Stop: 35867, Start Num: 10

Candidate Starts for Alleb_56:

(2, 35481), (Start: 10 @35613 has 9 MA's), (Start: 12 @35622 has 1 MA's), (15, 35646), (18, 35685), (22, 35742), (29, 35844),

Gene: Barnstormer_21 Start: 18602, Stop: 18829, Start Num: 11

Candidate Starts for Barnstormer_21:

(Start: 11 @18602 has 3 MA's), (25, 18755),

Gene: Caron_21 Start: 17996, Stop: 18214, Start Num: 11

Candidate Starts for Caron_21:

(Start: 11 @17996 has 3 MA's),

Gene: Casablanacas_64 Start: 35383, Stop: 35661, Start Num: 8

Candidate Starts for Casablanacas_64:

(Start: 8 @35383 has 12 MA's), (14, 35404),

Gene: Cen1621_20 Start: 17053, Stop: 17283, Start Num: 10

Candidate Starts for Cen1621_20:

(Start: 10 @17053 has 9 MA's), (25, 17209),

Gene: Deschain_64 Start: 36047, Stop: 36325, Start Num: 8

Candidate Starts for Deschain_64:

(Start: 8 @36047 has 12 MA's), (14, 36068),

Gene: DustyDino_66 Start: 36241, Stop: 36519, Start Num: 8

Candidate Starts for DustyDino_66:

(Start: 8 @36241 has 12 MA's), (14, 36262),

Gene: Erenyeager_63 Start: 35633, Stop: 35911, Start Num: 8

Candidate Starts for Erenyeager_63:

(Start: 8 @35633 has 12 MA's), (14, 35654),

Gene: Floof_22 Start: 18710, Stop: 18940, Start Num: 10

Candidate Starts for Floof_22:

(Start: 10 @18710 has 9 MA's), (17, 18773), (20, 18797),

Gene: Fork_59 Start: 35293, Stop: 35571, Start Num: 8

Candidate Starts for Fork_59:

(Start: 8 @35293 has 12 MA's), (14, 35314),

Gene: GardenState_22 Start: 19038, Stop: 19304, Start Num: 5

Candidate Starts for GardenState_22:

(Start: 5 @19038 has 3 MA's), (9, 19065), (Start: 10 @19071 has 9 MA's),

Gene: HollowPurple_64 Start: 35849, Stop: 36127, Start Num: 8

Candidate Starts for HollowPurple_64:

(Start: 8 @35849 has 12 MA's), (14, 35870),

Gene: Honk_20 Start: 16911, Stop: 17141, Start Num: 10

Candidate Starts for Honk_20:

(Start: 10 @16911 has 9 MA's), (16, 16947), (21, 17013), (25, 17067), (27, 17097),

Gene: Hortus1_55 Start: 35603, Stop: 35857, Start Num: 10

Candidate Starts for Hortus1_55:

(2, 35471), (Start: 10 @35603 has 9 MA's), (Start: 12 @35612 has 1 MA's), (15, 35636), (18, 35675), (22, 35732), (29, 35834),

Gene: IAmGroot_22 Start: 19699, Stop: 19965, Start Num: 5

Candidate Starts for IAmGroot_22:

(Start: 5 @19699 has 3 MA's), (9, 19726), (Start: 10 @19732 has 9 MA's),

Gene: Issa7_62 Start: 35297, Stop: 35575, Start Num: 8

Candidate Starts for Issa7_62:

(Start: 8 @35297 has 12 MA's), (14, 35318),

Gene: Jacko_59 Start: 34558, Stop: 34809, Start Num: 10

Candidate Starts for Jacko_59:

(Start: 10 @34558 has 9 MA's), (Start: 12 @34567 has 1 MA's), (23, 34693), (24, 34699),

Gene: Lyell_63 Start: 35552, Stop: 35830, Start Num: 8

Candidate Starts for Lyell_63:

(Start: 8 @35552 has 12 MA's), (14, 35573),

Gene: Mistmere_56 Start: 34447, Stop: 34713, Start Num: 12

Candidate Starts for Mistmere_56:

(3, 34363), (7, 34432), (Start: 8 @34435 has 12 MA's), (Start: 12 @34447 has 1 MA's), (26, 34636),

Gene: Musetta_63 Start: 36013, Stop: 36291, Start Num: 8

Candidate Starts for Musetta_63:

(Start: 8 @36013 has 12 MA's), (14, 36034),

Gene: Necrophoxinus_65 Start: 36247, Stop: 36525, Start Num: 8

Candidate Starts for Necrophoxinus_65:

(Start: 8 @36247 has 12 MA's), (14, 36268),

Gene: OlinDD_55 Start: 35602, Stop: 35856, Start Num: 10

Candidate Starts for OlinDD_55:

(2, 35470), (Start: 10 @35602 has 9 MA's), (Start: 12 @35611 has 1 MA's), (15, 35635), (18, 35674), (22, 35731), (29, 35833),

Gene: Pioneer3_55 Start: 35610, Stop: 35864, Start Num: 10

Candidate Starts for Pioneer3_55:

(2, 35478), (Start: 10 @35610 has 9 MA's), (Start: 12 @35619 has 1 MA's), (15, 35643), (18, 35682), (22, 35739), (29, 35841),

Gene: Platte_55 Start: 35404, Stop: 35649, Start Num: 12

Candidate Starts for Platte_55:

(2, 35263), (Start: 10 @35395 has 9 MA's), (Start: 12 @35404 has 1 MA's), (15, 35428), (18, 35467), (22, 35524), (29, 35626),

Gene: Rowa_22 Start: 18255, Stop: 18494, Start Num: 13

Candidate Starts for Rowa_22:

(6, 18219), (Start: 13 @18255 has 1 MA's), (19, 18318), (26, 18420), (28, 18468), (29, 18474),

Gene: RunningBrook_64 Start: 36241, Stop: 36519, Start Num: 8

Candidate Starts for RunningBrook_64:

(Start: 8 @36241 has 12 MA's), (14, 36262),

Gene: Shroomer_66 Start: 35783, Stop: 36061, Start Num: 8

Candidate Starts for Shroomer_66:

(Start: 8 @35783 has 12 MA's), (14, 35804),

Gene: SteakFry_116 Start: 61045, Stop: 61323, Start Num: 8

Candidate Starts for SteakFry_116:

(Start: 8 @61045 has 12 MA's), (14, 61066),

Gene: SteakFry_62 Start: 35849, Stop: 36127, Start Num: 8

Candidate Starts for SteakFry_62:

(Start: 8 @35849 has 12 MA's), (14, 35870),

Gene: StevieWelch_63 Start: 35633, Stop: 35911, Start Num: 8

Candidate Starts for StevieWelch_63:

(Start: 8 @35633 has 12 MA's), (14, 35654),

Gene: Tandem_55 Start: 35549, Stop: 35803, Start Num: 10

Candidate Starts for Tandem_55:

(2, 35417), (Start: 10 @35549 has 9 MA's), (Start: 12 @35558 has 1 MA's), (15, 35582), (18, 35621), (22, 35678), (29, 35780),

Gene: UtzChips_21 Start: 18590, Stop: 18817, Start Num: 11

Candidate Starts for UtzChips_21:

(Start: 11 @18590 has 3 MA's), (25, 18743),

Gene: Welcome_64 Start: 35998, Stop: 36276, Start Num: 8
Candidate Starts for Welcome_64:
(Start: 8 @35998 has 12 MA's), (14, 36019),

Gene: Yuma_62 Start: 35567, Stop: 35845, Start Num: 8
Candidate Starts for Yuma_62:
(Start: 8 @35567 has 12 MA's), (14, 35588),

Gene: Zeta1847_20 Start: 18641, Stop: 18922, Start Num: 5
Candidate Starts for Zeta1847_20:
(1, 18380), (4, 18620), (Start: 5 @18641 has 3 MA's), (Start: 11 @18677 has 3 MA's), (22, 18797), (26, 18845),