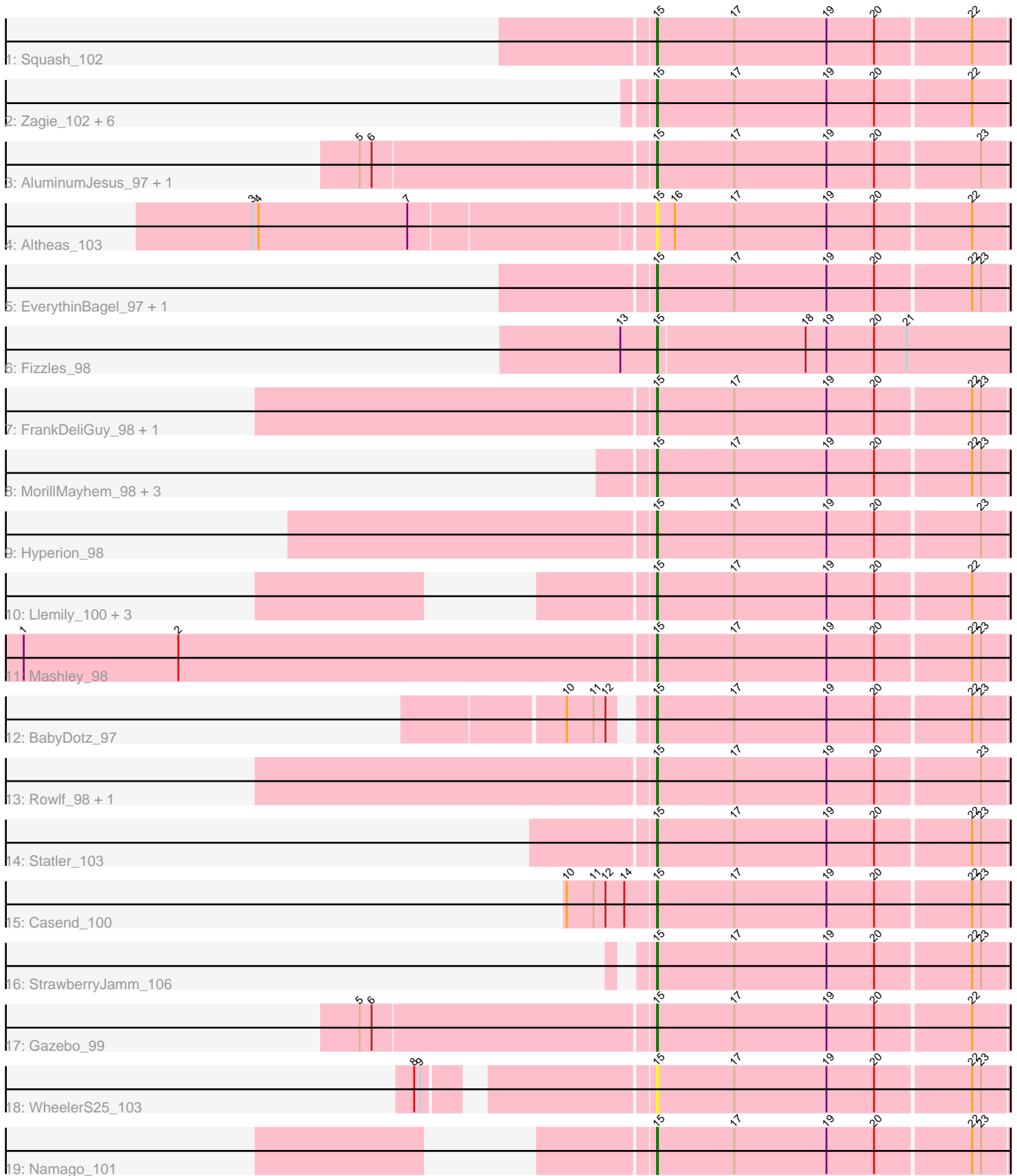


Pham 294922



Note: Tracks are now grouped by subcluster and scaled. Switching in subcluster is indicated by changes in track color. Track scale is now set by default to display the region 30 bp upstream of start 1 to 30 bp downstream of the last possible start. If this default region is judged to be packed too tightly with annotated starts, the track will be further scaled to only show that region of the ORF with annotated starts. This action will be indicated by adding "Zoomed" to the title. For starts, yellow indicates the location of called starts comprised solely of Glimmer/GeneMark auto-annotations, green indicates the location of called starts with at least 1 manual gene annotation.

Pham 294922 Report

This analysis was run 04/18/26 on database version 643.

Pham number 294922 has 35 members, 7 are drafts.

Phages represented in each track:

- Track 1 : Squash_102
- Track 2 : Zagie_102, Viceroy_99, Rudy_98, Kyva_105, Grassboy_105, Lonelysoil_98, Quammi_100
- Track 3 : AluminumJesus_97, Blab_97
- Track 4 : Altheas_103
- Track 5 : EverythinBagel_97, Judebell_99
- Track 6 : Fizzles_98
- Track 7 : FrankDeliGuy_98, SlySloth_103
- Track 8 : MorillMayhem_98, BaconCheese_102, Mila11_101, Nike_98
- Track 9 : Hyperion_98
- Track 10 : Llemily_100, DonaldDuck_100, Sillytadpoles_101, Zhafia_103
- Track 11 : Mashley_98
- Track 12 : BabyDotz_97
- Track 13 : Rowlf_98, Mentos_104
- Track 14 : Statler_103
- Track 15 : Casend_100
- Track 16 : StrawberryJamm_106
- Track 17 : Gazebo_99
- Track 18 : WheelerS25_103
- Track 19 : Namago_101

Summary of Final Annotations (See graph section above for start numbers):

The start number called the most often in the published annotations is 15, it was called in 28 of the 28 non-draft genes in the pham.

Genes that call this "Most Annotated" start:

- Altheas_103, AluminumJesus_97, BabyDotz_97, BaconCheese_102, Blab_97, Casend_100, DonaldDuck_100, EverythinBagel_97, Fizzles_98, FrankDeliGuy_98, Gazebo_99, Grassboy_105, Hyperion_98, Judebell_99, Kyva_105, Llemily_100, Lonelysoil_98, Mashley_98, Mentos_104, Mila11_101, MorillMayhem_98, Namago_101, Nike_98, Quammi_100, Rowlf_98, Rudy_98, Sillytadpoles_101, SlySloth_103, Squash_102, Statler_103, StrawberryJamm_106, Viceroy_99, WheelerS25_103, Zagie_102, Zhafia_103,

Genes that have the "Most Annotated" start but do not call it:

-

Genes that do not have the "Most Annotated" start:

-

Summary by start number:

Start 15:

- Found in 35 of 35 (100.0%) of genes in pham
- Manual Annotations of this start: 28 of 28
- Called 100.0% of time when present
- Phage (with cluster) where this start called: Altheas_103 (EG), AluminumJesus_97 (EG), BabyDotz_97 (EG), BaconCheese_102 (EG), Blab_97 (EG), Casend_100 (EG), DonaldDuck_100 (EG), EverythinBagel_97 (EG), Fizzles_98 (EG), FrankDeliGuy_98 (EG), Gazebo_99 (EG), Grassboy_105 (EG), Hyperion_98 (EG), Judebell_99 (EG), Kyva_105 (EG), Llemily_100 (EG), Lonelysoil_98 (EG), Mashley_98 (EG), Mentos_104 (EG), Mila11_101 (EG), MorillMayhem_98 (EG), Namago_101 (EG), Nike_98 (EG), Quammi_100 (EG), Rowlf_98 (EG), Rudy_98 (EG), Sillytadpoles_101 (EG), SlySloth_103 (EG), Squash_102 (EG), Statler_103 (EG), StrawberryJamm_106 (EG), Viceroy_99 (EG), WheelerS25_103 (EG), Zagie_102 (EG), Zhafia_103 (EG),

Summary by clusters:

There is one cluster represented in this pham: EG

Info for manual annotations of cluster EG:

- Start number 15 was manually annotated 28 times for cluster EG.

Gene Information:

Gene: Altheas_103 Start: 60624, Stop: 60274, Start Num: 15

Candidate Starts for Altheas_103:

(3, 61017), (4, 61011), (7, 60861), (Start: 15 @60624 has 28 MA's), (16, 60606), (17, 60549), (19, 60456), (20, 60408), (22, 60315),

Gene: AluminumJesus_97 Start: 59060, Stop: 58710, Start Num: 15

Candidate Starts for AluminumJesus_97:

(5, 59345), (6, 59333), (Start: 15 @59060 has 28 MA's), (17, 58985), (19, 58892), (20, 58844), (23, 58742),

Gene: BabyDotz_97 Start: 60530, Stop: 60180, Start Num: 15

Candidate Starts for BabyDotz_97:

(10, 60596), (11, 60569), (12, 60557), (Start: 15 @60530 has 28 MA's), (17, 60455), (19, 60362), (20, 60314), (22, 60221), (23, 60212),

Gene: BaconCheese_102 Start: 60595, Stop: 60245, Start Num: 15

Candidate Starts for BaconCheese_102:

(Start: 15 @60595 has 28 MA's), (17, 60520), (19, 60427), (20, 60379), (22, 60286), (23, 60277),

Gene: Blab_97 Start: 59633, Stop: 59283, Start Num: 15

Candidate Starts for Blab_97:

(5, 59918), (6, 59906), (Start: 15 @59633 has 28 MA's), (17, 59558), (19, 59465), (20, 59417), (23, 59315),

Gene: Casend_100 Start: 59864, Stop: 59514, Start Num: 15

Candidate Starts for Casend_100:

(10, 59951), (11, 59924), (12, 59912), (14, 59894), (Start: 15 @59864 has 28 MA's), (17, 59789), (19, 59696), (20, 59648), (22, 59555), (23, 59546),

Gene: DonaldDuck_100 Start: 59448, Stop: 59098, Start Num: 15

Candidate Starts for DonaldDuck_100:

(Start: 15 @59448 has 28 MA's), (17, 59373), (19, 59280), (20, 59232), (22, 59139),

Gene: EverythinBagel_97 Start: 59029, Stop: 58679, Start Num: 15

Candidate Starts for EverythinBagel_97:

(Start: 15 @59029 has 28 MA's), (17, 58954), (19, 58861), (20, 58813), (22, 58720), (23, 58711),

Gene: Fizzles_98 Start: 59525, Stop: 59166, Start Num: 15

Candidate Starts for Fizzles_98:

(13, 59561), (Start: 15 @59525 has 28 MA's), (18, 59378), (19, 59357), (20, 59309), (21, 59276),

Gene: FrankDeliGuy_98 Start: 59788, Stop: 59438, Start Num: 15

Candidate Starts for FrankDeliGuy_98:

(Start: 15 @59788 has 28 MA's), (17, 59713), (19, 59620), (20, 59572), (22, 59479), (23, 59470),

Gene: Gazebo_99 Start: 59638, Stop: 59288, Start Num: 15

Candidate Starts for Gazebo_99:

(5, 59923), (6, 59911), (Start: 15 @59638 has 28 MA's), (17, 59563), (19, 59470), (20, 59422), (22, 59329),

Gene: Grassboy_105 Start: 60349, Stop: 59999, Start Num: 15

Candidate Starts for Grassboy_105:

(Start: 15 @60349 has 28 MA's), (17, 60274), (19, 60181), (20, 60133), (22, 60040),

Gene: Hyperion_98 Start: 59365, Stop: 59015, Start Num: 15

Candidate Starts for Hyperion_98:

(Start: 15 @59365 has 28 MA's), (17, 59290), (19, 59197), (20, 59149), (23, 59047),

Gene: Judebell_99 Start: 59264, Stop: 58914, Start Num: 15

Candidate Starts for Judebell_99:

(Start: 15 @59264 has 28 MA's), (17, 59189), (19, 59096), (20, 59048), (22, 58955), (23, 58946),

Gene: Kyva_105 Start: 60373, Stop: 60023, Start Num: 15

Candidate Starts for Kyva_105:

(Start: 15 @60373 has 28 MA's), (17, 60298), (19, 60205), (20, 60157), (22, 60064),

Gene: Llemily_100 Start: 59143, Stop: 58793, Start Num: 15

Candidate Starts for Llemily_100:

(Start: 15 @59143 has 28 MA's), (17, 59068), (19, 58975), (20, 58927), (22, 58834),

Gene: Lonelysoil_98 Start: 58904, Stop: 58554, Start Num: 15

Candidate Starts for Lonelysoil_98:

(Start: 15 @58904 has 28 MA's), (17, 58829), (19, 58736), (20, 58688), (22, 58595),

Gene: Mashley_98 Start: 59362, Stop: 59012, Start Num: 15

Candidate Starts for Mashley_98:

(1, 59989), (2, 59833), (Start: 15 @59362 has 28 MA's), (17, 59287), (19, 59194), (20, 59146), (22, 59053), (23, 59044),

Gene: Mentos_104 Start: 60481, Stop: 60134, Start Num: 15

Candidate Starts for Mentos_104:

(Start: 15 @60481 has 28 MA's), (17, 60406), (19, 60313), (20, 60265), (23, 60163),

Gene: Mila11_101 Start: 61146, Stop: 60796, Start Num: 15

Candidate Starts for Mila11_101:

(Start: 15 @61146 has 28 MA's), (17, 61071), (19, 60978), (20, 60930), (22, 60837), (23, 60828),

Gene: MorillMayhem_98 Start: 59485, Stop: 59135, Start Num: 15

Candidate Starts for MorillMayhem_98:

(Start: 15 @59485 has 28 MA's), (17, 59410), (19, 59317), (20, 59269), (22, 59176), (23, 59167),

Gene: Namago_101 Start: 59431, Stop: 59081, Start Num: 15

Candidate Starts for Namago_101:

(Start: 15 @59431 has 28 MA's), (17, 59356), (19, 59263), (20, 59215), (22, 59122), (23, 59113),

Gene: Nike_98 Start: 59974, Stop: 59624, Start Num: 15

Candidate Starts for Nike_98:

(Start: 15 @59974 has 28 MA's), (17, 59899), (19, 59806), (20, 59758), (22, 59665), (23, 59656),

Gene: Quammi_100 Start: 59425, Stop: 59075, Start Num: 15

Candidate Starts for Quammi_100:

(Start: 15 @59425 has 28 MA's), (17, 59350), (19, 59257), (20, 59209), (22, 59116),

Gene: Rowlf_98 Start: 59714, Stop: 59364, Start Num: 15

Candidate Starts for Rowlf_98:

(Start: 15 @59714 has 28 MA's), (17, 59639), (19, 59546), (20, 59498), (23, 59396),

Gene: Rudy_98 Start: 59291, Stop: 58941, Start Num: 15

Candidate Starts for Rudy_98:

(Start: 15 @59291 has 28 MA's), (17, 59216), (19, 59123), (20, 59075), (22, 58982),

Gene: Sillytadpoles_101 Start: 59131, Stop: 58781, Start Num: 15

Candidate Starts for Sillytadpoles_101:

(Start: 15 @59131 has 28 MA's), (17, 59056), (19, 58963), (20, 58915), (22, 58822),

Gene: SlySloth_103 Start: 59707, Stop: 59360, Start Num: 15

Candidate Starts for SlySloth_103:

(Start: 15 @59707 has 28 MA's), (17, 59632), (19, 59539), (20, 59491), (22, 59398), (23, 59389),

Gene: Squash_102 Start: 59899, Stop: 59549, Start Num: 15

Candidate Starts for Squash_102:

(Start: 15 @59899 has 28 MA's), (17, 59824), (19, 59731), (20, 59683), (22, 59590),

Gene: Statler_103 Start: 59985, Stop: 59635, Start Num: 15

Candidate Starts for Statler_103:

(Start: 15 @59985 has 28 MA's), (17, 59910), (19, 59817), (20, 59769), (22, 59676), (23, 59667),

Gene: StrawberryJamm_106 Start: 59386, Stop: 59039, Start Num: 15

Candidate Starts for StrawberryJamm_106:

(Start: 15 @59386 has 28 MA's), (17, 59311), (19, 59218), (20, 59170), (22, 59077), (23, 59068),

Gene: Viceroy_99 Start: 59246, Stop: 58896, Start Num: 15

Candidate Starts for Viceroy_99:

(Start: 15 @59246 has 28 MA's), (17, 59171), (19, 59078), (20, 59030), (22, 58937),

Gene: WheelerS25_103 Start: 59939, Stop: 59589, Start Num: 15

Candidate Starts for WheelerS25_103:

(8, 60140), (9, 60134), (Start: 15 @59939 has 28 MA's), (17, 59864), (19, 59771), (20, 59723), (22, 59630), (23, 59621),

Gene: Zagie_102 Start: 59891, Stop: 59541, Start Num: 15

Candidate Starts for Zagie_102:

(Start: 15 @59891 has 28 MA's), (17, 59816), (19, 59723), (20, 59675), (22, 59582),

Gene: Zhafia_103 Start: 59925, Stop: 59575, Start Num: 15

Candidate Starts for Zhafia_103:

(Start: 15 @59925 has 28 MA's), (17, 59850), (19, 59757), (20, 59709), (22, 59616),