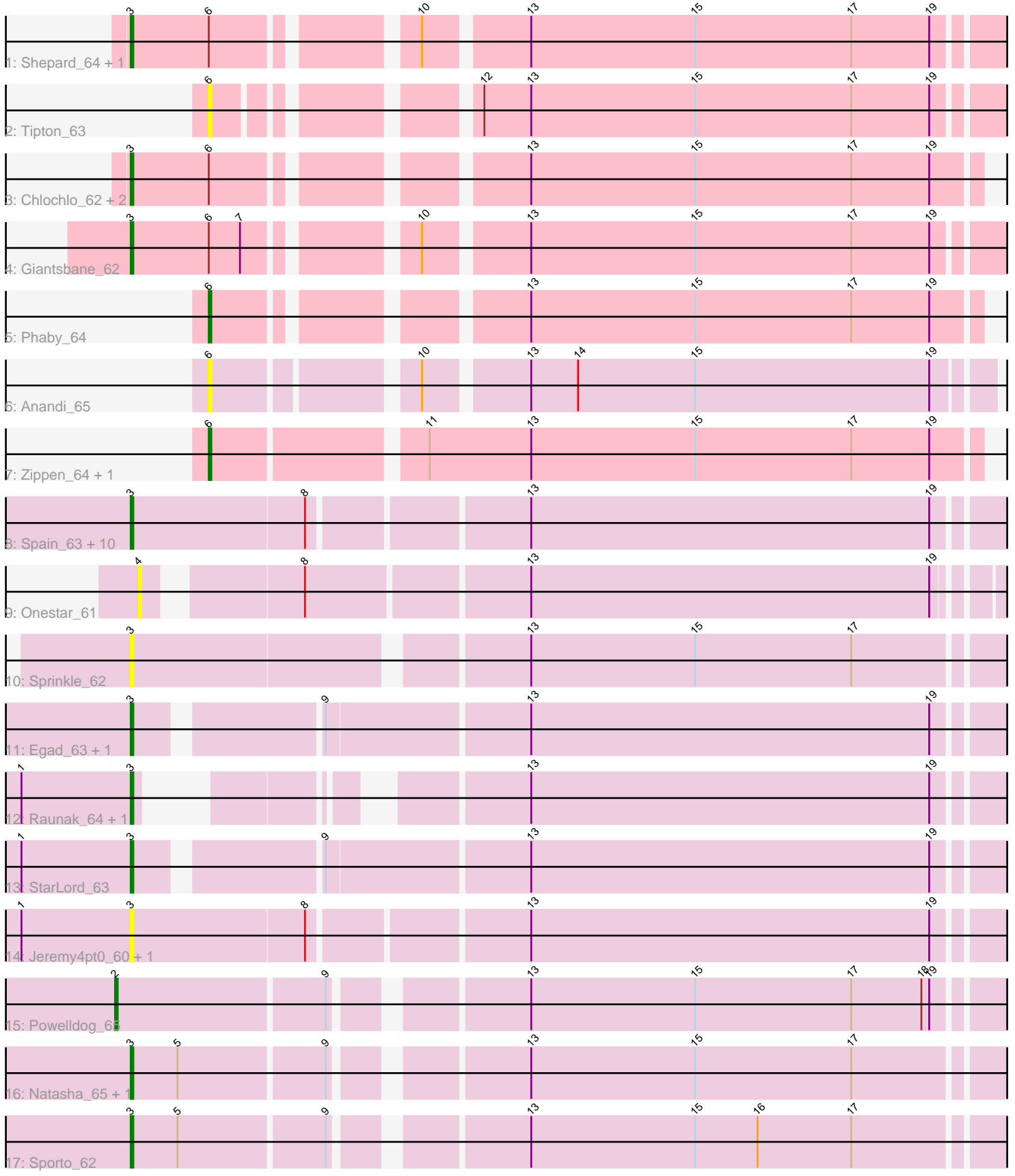


Pham 294925



Note: Tracks are now grouped by subcluster and scaled. Switching in subcluster is indicated by changes in track color. Track scale is now set by default to display the region 30 bp upstream of start 1 to 30 bp downstream of the last possible start. If this default region is judged to be packed too tightly with annotated starts, the track will be further scaled to only show that region of the ORF with annotated starts. This action will be indicated by adding "Zoomed" to the title. For starts, yellow indicates the location of called starts comprised solely of Glimmer/GeneMark auto-annotations, green indicates the location of called starts with at least 1 manual gene annotation.

## Pham 294925 Report

This analysis was run 04/18/26 on database version 643.

Pham number 294925 has 35 members, 8 are drafts.

Phages represented in each track:

- Track 1 : Shepard\_64, LilHuddy\_63
- Track 2 : Tipton\_63
- Track 3 : Chlochlo\_62, Bouchard\_62, Tokki\_67
- Track 4 : Giantsbane\_62
- Track 5 : Phaby\_64
- Track 6 : Anandi\_65
- Track 7 : Zippen\_64, Inked\_65
- Track 8 : Spain\_63, Salk\_63, DoctorPepper\_62, Stayer\_63, Sloopyjoe\_63, Linda\_63, Boog\_62, BronxBay\_63, Michelle\_63, MrAaronian\_63, Djungelskog\_62
- Track 9 : Onestar\_61
- Track 10 : Sprinkle\_62
- Track 11 : Egad\_63, ProfFrink\_63
- Track 12 : Raunak\_64, Shiba\_62
- Track 13 : StarLord\_63
- Track 14 : Jeremy4pt0\_60, HerbBucket\_61
- Track 15 : PowellDog\_65
- Track 16 : Natasha\_65, RustyBoy\_66
- Track 17 : Sporto\_62

### ***Summary of Final Annotations (See graph section above for start numbers):***

The start number called the most often in the published annotations is 3, it was called in 23 of the 27 non-draft genes in the pham.

Genes that call this "Most Annotated" start:

- Boog\_62, Bouchard\_62, BronxBay\_63, Chlochlo\_62, Djungelskog\_62, DoctorPepper\_62, Egad\_63, Giantsbane\_62, HerbBucket\_61, Jeremy4pt0\_60, LilHuddy\_63, Linda\_63, Michelle\_63, MrAaronian\_63, Natasha\_65, ProfFrink\_63, Raunak\_64, RustyBoy\_66, Salk\_63, Shepard\_64, Shiba\_62, Sloopyjoe\_63, Spain\_63, Sporto\_62, Sprinkle\_62, StarLord\_63, Stayer\_63, Tokki\_67,

Genes that have the "Most Annotated" start but do not call it:

-

Genes that do not have the "Most Annotated" start:

- Anandi\_65, Inked\_65, Onestar\_61, Phaby\_64, Powellldog\_65, Tipton\_63, Zippen\_64,

### Summary by start number:

Start 2:

- Found in 1 of 35 ( 2.9% ) of genes in pham
- Manual Annotations of this start: 1 of 27
- Called 100.0% of time when present
- Phage (with cluster) where this start called: Powellldog\_65 (AW),

Start 3:

- Found in 28 of 35 ( 80.0% ) of genes in pham
- Manual Annotations of this start: 23 of 27
- Called 100.0% of time when present
- Phage (with cluster) where this start called: Boog\_62 (AW), Bouchard\_62 (AU2), BronxBay\_63 (AW), Chlochlo\_62 (AU2), Djungelskog\_62 (AW), DoctorPepper\_62 (AW), Egad\_63 (AW), Giantsbane\_62 (AU2), HerbBucket\_61 (AW), Jeremy4pt0\_60 (AW), LilHuddy\_63 (AU2), Linda\_63 (AW), Michelle\_63 (AW), MrAaronian\_63 (AW), Natasha\_65 (AW), ProfFrink\_63 (AW), Raunak\_64 (AW), RustyBoy\_66 (AW), Salk\_63 (AW), Shepard\_64 (AU2), Shiba\_62 (AW), Sloopyjoe\_63 (AW), Spain\_63 (AW), Sporto\_62 (AW), Sprinkle\_62 (AW), StarLord\_63 (AW), Stayer\_63 (AW), Tokki\_67 (AU2),

Start 4:

- Found in 1 of 35 ( 2.9% ) of genes in pham
- No Manual Annotations of this start.
- Called 100.0% of time when present
- Phage (with cluster) where this start called: Onestar\_61 (AW),

Start 6:

- Found in 11 of 35 ( 31.4% ) of genes in pham
- Manual Annotations of this start: 3 of 27
- Called 45.5% of time when present
- Phage (with cluster) where this start called: Anandi\_65 (AU4), Inked\_65 (AU7), Phaby\_64 (AU2), Tipton\_63 (AU2), Zippen\_64 (AU7),

### Summary by clusters:

There are 4 clusters represented in this pham: AU2, AU7, AW, AU4,

Info for manual annotations of cluster AU2:

- Start number 3 was manually annotated 6 times for cluster AU2.
- Start number 6 was manually annotated 1 time for cluster AU2.

Info for manual annotations of cluster AU7:

- Start number 6 was manually annotated 2 times for cluster AU7.

Info for manual annotations of cluster AW:

- Start number 2 was manually annotated 1 time for cluster AW.
- Start number 3 was manually annotated 17 times for cluster AW.

**Gene Information:**

Gene: Anandi\_65 Start: 43587, Stop: 43865, Start Num: 6

Candidate Starts for Anandi\_65:

(Start: 6 @43587 has 3 MA's), (10, 43656), (13, 43692), (14, 43710), (15, 43755), (19, 43845),

Gene: Boog\_62 Start: 41296, Stop: 41628, Start Num: 3

Candidate Starts for Boog\_62:

(Start: 3 @41296 has 23 MA's), (8, 41362), (13, 41440), (19, 41593),

Gene: Bouchard\_62 Start: 43508, Stop: 43810, Start Num: 3

Candidate Starts for Bouchard\_62:

(Start: 3 @43508 has 23 MA's), (Start: 6 @43538 has 3 MA's), (13, 43640), (15, 43703), (17, 43763), (19, 43793),

Gene: BronxBay\_63 Start: 41552, Stop: 41884, Start Num: 3

Candidate Starts for BronxBay\_63:

(Start: 3 @41552 has 23 MA's), (8, 41618), (13, 41696), (19, 41849),

Gene: Chlochlo\_62 Start: 43034, Stop: 43336, Start Num: 3

Candidate Starts for Chlochlo\_62:

(Start: 3 @43034 has 23 MA's), (Start: 6 @43064 has 3 MA's), (13, 43166), (15, 43229), (17, 43289), (19, 43319),

Gene: Djungelskog\_62 Start: 41551, Stop: 41883, Start Num: 3

Candidate Starts for Djungelskog\_62:

(Start: 3 @41551 has 23 MA's), (8, 41617), (13, 41695), (19, 41848),

Gene: DoctorPepper\_62 Start: 41256, Stop: 41588, Start Num: 3

Candidate Starts for DoctorPepper\_62:

(Start: 3 @41256 has 23 MA's), (8, 41322), (13, 41400), (19, 41553),

Gene: Egad\_63 Start: 41553, Stop: 41879, Start Num: 3

Candidate Starts for Egad\_63:

(Start: 3 @41553 has 23 MA's), (9, 41616), (13, 41691), (19, 41844),

Gene: Giantsbane\_62 Start: 42221, Stop: 42541, Start Num: 3

Candidate Starts for Giantsbane\_62:

(Start: 3 @42221 has 23 MA's), (Start: 6 @42251 has 3 MA's), (7, 42263), (10, 42317), (13, 42353), (15, 42416), (17, 42476), (19, 42506),

Gene: HerbBucket\_61 Start: 41293, Stop: 41610, Start Num: 3

Candidate Starts for HerbBucket\_61:

(1, 41251), (Start: 3 @41293 has 23 MA's), (8, 41359), (13, 41422), (19, 41575),

Gene: Inked\_65 Start: 44293, Stop: 44580, Start Num: 6

Candidate Starts for Inked\_65:

(Start: 6 @44293 has 3 MA's), (11, 44368), (13, 44407), (15, 44470), (17, 44530), (19, 44560),

Gene: Jeremy4pt0\_60 Start: 41251, Stop: 41583, Start Num: 3

Candidate Starts for Jeremy4pt0\_60:

(1, 41209), (Start: 3 @41251 has 23 MA's), (8, 41317), (13, 41395), (19, 41548),

Gene: LilHuddy\_63 Start: 43331, Stop: 43651, Start Num: 3

Candidate Starts for LilHuddy\_63:

(Start: 3 @43331 has 23 MA's), (Start: 6 @43361 has 3 MA's), (10, 43427), (13, 43463), (15, 43526), (17, 43586), (19, 43616),

Gene: Linda\_63 Start: 41549, Stop: 41881, Start Num: 3

Candidate Starts for Linda\_63:

(Start: 3 @41549 has 23 MA's), (8, 41615), (13, 41693), (19, 41846),

Gene: Michelle\_63 Start: 41551, Stop: 41883, Start Num: 3

Candidate Starts for Michelle\_63:

(Start: 3 @41551 has 23 MA's), (8, 41617), (13, 41695), (19, 41848),

Gene: MrAaronian\_63 Start: 41551, Stop: 41883, Start Num: 3

Candidate Starts for MrAaronian\_63:

(Start: 3 @41551 has 23 MA's), (8, 41617), (13, 41695), (19, 41848),

Gene: Natasha\_65 Start: 41511, Stop: 41825, Start Num: 3

Candidate Starts for Natasha\_65:

(Start: 3 @41511 has 23 MA's), (5, 41529), (9, 41583), (13, 41646), (15, 41709), (17, 41769),

Gene: Onestar\_61 Start: 41324, Stop: 41641, Start Num: 4

Candidate Starts for Onestar\_61:

(4, 41324), (8, 41375), (13, 41456), (19, 41609),

Gene: Phaby\_64 Start: 43940, Stop: 44212, Start Num: 6

Candidate Starts for Phaby\_64:

(Start: 6 @43940 has 3 MA's), (13, 44042), (15, 44105), (17, 44165), (19, 44195),

Gene: Powelldog\_65 Start: 41968, Stop: 42291, Start Num: 2

Candidate Starts for Powelldog\_65:

(Start: 2 @41968 has 1 MA's), (9, 42046), (13, 42109), (15, 42172), (17, 42232), (18, 42259), (19, 42262),

Gene: ProfFrink\_63 Start: 41552, Stop: 41878, Start Num: 3

Candidate Starts for ProfFrink\_63:

(Start: 3 @41552 has 23 MA's), (9, 41615), (13, 41690), (19, 41843),

Gene: Raunak\_64 Start: 41249, Stop: 41539, Start Num: 3

Candidate Starts for Raunak\_64:

(1, 41207), (Start: 3 @41249 has 23 MA's), (13, 41351), (19, 41504),

Gene: RustyBoy\_66 Start: 41710, Stop: 42024, Start Num: 3

Candidate Starts for RustyBoy\_66:

(Start: 3 @41710 has 23 MA's), (5, 41728), (9, 41782), (13, 41845), (15, 41908), (17, 41968),

Gene: Salk\_63 Start: 41549, Stop: 41881, Start Num: 3

Candidate Starts for Salk\_63:

(Start: 3 @41549 has 23 MA's), (8, 41615), (13, 41693), (19, 41846),

Gene: Shepard\_64 Start: 43190, Stop: 43510, Start Num: 3  
Candidate Starts for Shepard\_64:  
(Start: 3 @43190 has 23 MA's), (Start: 6 @43220 has 3 MA's), (10, 43286), (13, 43322), (15, 43385),  
(17, 43445), (19, 43475),

Gene: Shiba\_62 Start: 41249, Stop: 41539, Start Num: 3  
Candidate Starts for Shiba\_62:  
(1, 41207), (Start: 3 @41249 has 23 MA's), (13, 41351), (19, 41504),

Gene: Sloopyjoe\_63 Start: 41553, Stop: 41885, Start Num: 3  
Candidate Starts for Sloopyjoe\_63:  
(Start: 3 @41553 has 23 MA's), (8, 41619), (13, 41697), (19, 41850),

Gene: Spain\_63 Start: 41551, Stop: 41883, Start Num: 3  
Candidate Starts for Spain\_63:  
(Start: 3 @41551 has 23 MA's), (8, 41617), (13, 41695), (19, 41848),

Gene: Sporto\_62 Start: 42677, Stop: 42991, Start Num: 3  
Candidate Starts for Sporto\_62:  
(Start: 3 @42677 has 23 MA's), (5, 42695), (9, 42749), (13, 42812), (15, 42875), (16, 42899), (17,  
42935),

Gene: Sprinkle\_62 Start: 41712, Stop: 42032, Start Num: 3  
Candidate Starts for Sprinkle\_62:  
(Start: 3 @41712 has 23 MA's), (13, 41853), (15, 41916), (17, 41976),

Gene: StarLord\_63 Start: 41552, Stop: 41878, Start Num: 3  
Candidate Starts for StarLord\_63:  
(1, 41510), (Start: 3 @41552 has 23 MA's), (9, 41615), (13, 41690), (19, 41843),

Gene: Stayer\_63 Start: 41549, Stop: 41881, Start Num: 3  
Candidate Starts for Stayer\_63:  
(Start: 3 @41549 has 23 MA's), (8, 41615), (13, 41693), (19, 41846),

Gene: Tipton\_63 Start: 43711, Stop: 43998, Start Num: 6  
Candidate Starts for Tipton\_63:  
(Start: 6 @43711 has 3 MA's), (12, 43792), (13, 43810), (15, 43873), (17, 43933), (19, 43963),

Gene: Tokki\_67 Start: 43544, Stop: 43864, Start Num: 3  
Candidate Starts for Tokki\_67:  
(Start: 3 @43544 has 23 MA's), (Start: 6 @43574 has 3 MA's), (13, 43676), (15, 43739), (17, 43799),  
(19, 43829),

Gene: Zippen\_64 Start: 43993, Stop: 44277, Start Num: 6  
Candidate Starts for Zippen\_64:  
(Start: 6 @43993 has 3 MA's), (11, 44068), (13, 44107), (15, 44170), (17, 44230), (19, 44260),