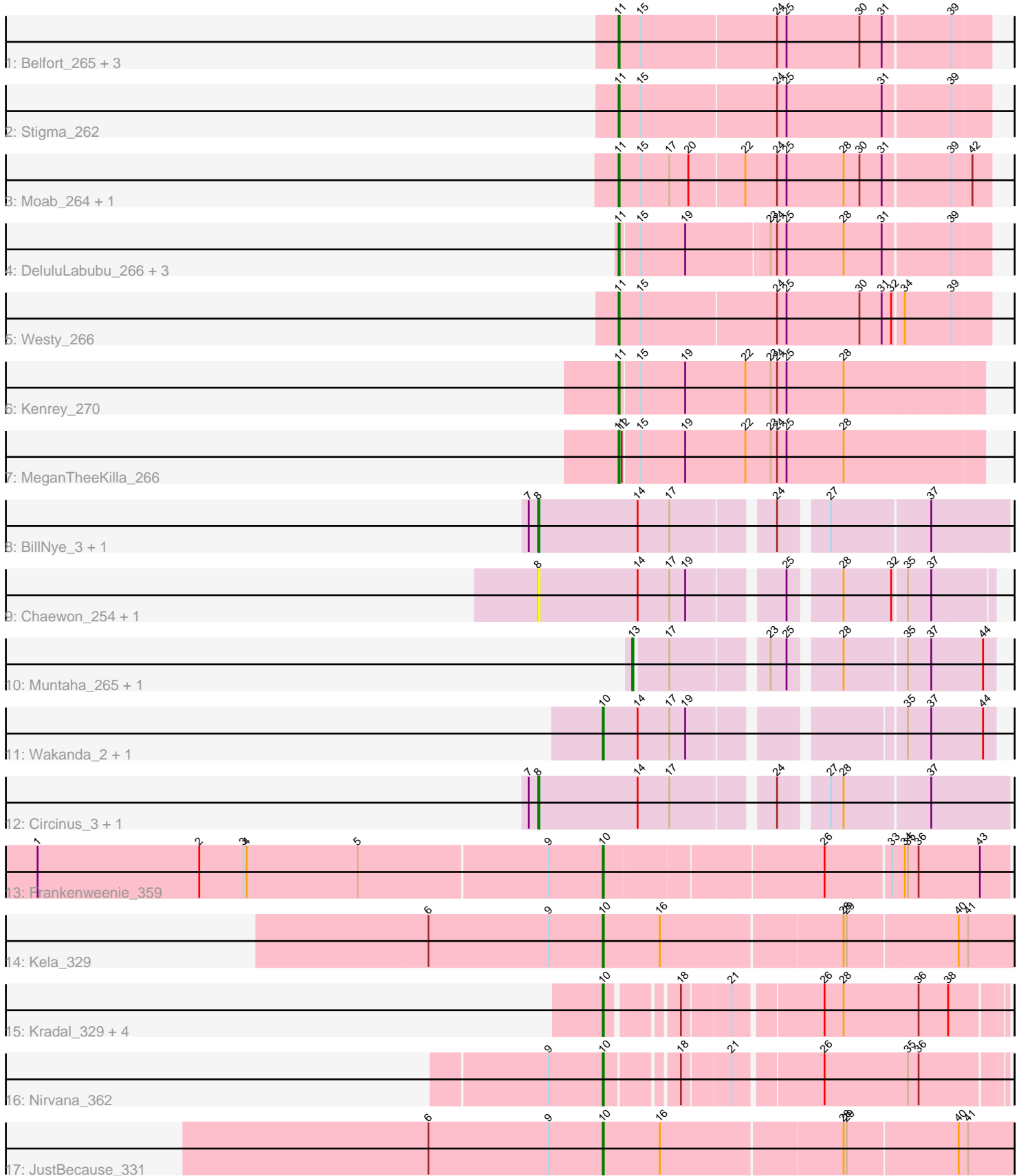


Pham 294937



Note: Tracks are now grouped by subcluster and scaled. Switching in subcluster is indicated by changes in track color. Track scale is now set by default to display the region 30 bp upstream of start 1 to 30 bp downstream of the last possible start. If this default region is judged to be packed too tightly with annotated starts, the track will be further scaled to only show that region of the ORF with annotated starts. This action will be indicated by adding "Zoomed" to the title. For starts, yellow indicates the location of called starts comprised solely of Glimmer/GeneMark auto-annotations, green indicates the location of called starts with at least 1 manual gene annotation.

Pham 294937 Report

This analysis was run 04/18/26 on database version 643.

Pham number 294937 has 33 members, 4 are drafts.

Phages represented in each track:

- Track 1 : Belfort_265, Karp_265, Comrade_260, SparkleGoddess_264
- Track 2 : Stigma_262
- Track 3 : Moab_264, Patelgo_267
- Track 4 : DeluluLabubu_266, Gilson_264, Maupel_270, Francob_267
- Track 5 : Westy_266
- Track 6 : Kenrey_270
- Track 7 : MeganTheeKilla_266
- Track 8 : BillNye_3, BillNye_249
- Track 9 : Chaewon_254, Chaewon_5
- Track 10 : Muntaha_265, Muntaha_2
- Track 11 : Wakanda_2, Wakanda_261
- Track 12 : Circinus_3, Circinus_248
- Track 13 : Frankenweenie_359
- Track 14 : Kela_329
- Track 15 : Kradal_329, Quantum_327, EhyElimayoE_332, Satis_329, Sarkar_343
- Track 16 : Nirvana_362
- Track 17 : JustBecause_331

Summary of Final Annotations (See graph section above for start numbers):

The start number called the most often in the published annotations is 11, it was called in 13 of the 29 non-draft genes in the pham.

Genes that call this "Most Annotated" start:

- Belfort_265, Comrade_260, DeluluLabubu_266, Francob_267, Gilson_264, Karp_265, Kenrey_270, Maupel_270, MeganTheeKilla_266, Moab_264, Patelgo_267, SparkleGoddess_264, Stigma_262, Westy_266,

Genes that have the "Most Annotated" start but do not call it:

-

Genes that do not have the "Most Annotated" start:

- BillNye_249, BillNye_3, Chaewon_254, Chaewon_5, Circinus_248, Circinus_3, EhyElimayoE_332, Frankenweenie_359, JustBecause_331, Kela_329, Kradal_329,

Muntaha_2, Muntaha_265, Nirvana_362, Quantum_327, Sarkar_343, Satis_329, Wakanda_2, Wakanda_261,

Summary by start number:

Start 8:

- Found in 6 of 33 (18.2%) of genes in pham
- Manual Annotations of this start: 4 of 29
- Called 100.0% of time when present
- Phage (with cluster) where this start called: BillNye_249 (BK2), BillNye_3 (BK2), Chaewon_254 (BK2), Chaewon_5 (BK2), Circinus_248 (BK2), Circinus_3 (BK2),

Start 10:

- Found in 11 of 33 (33.3%) of genes in pham
- Manual Annotations of this start: 10 of 29
- Called 100.0% of time when present
- Phage (with cluster) where this start called: EhyElimayoE_332 (BM), Frankenweenie_359 (BM), JustBecause_331 (BM), Kela_329 (BM), Kradal_329 (BM), Nirvana_362 (BM), Quantum_327 (BM), Sarkar_343 (BM), Satis_329 (BM), Wakanda_2 (BK2), Wakanda_261 (BK2),

Start 11:

- Found in 14 of 33 (42.4%) of genes in pham
- Manual Annotations of this start: 13 of 29
- Called 100.0% of time when present
- Phage (with cluster) where this start called: Belfort_265 (BK1), Comrade_260 (BK1), DeluluLabubu_266 (BK1), Francob_267 (BK1), Gilson_264 (BK1), Karp_265 (BK1), Kenrey_270 (BK1), Maupel_270 (BK1), MeganTheeKilla_266 (BK1), Moab_264 (BK1), Patelgo_267 (BK1), SparkleGoddess_264 (BK1), Stigma_262 (BK1), Westy_266 (BK1),

Start 13:

- Found in 2 of 33 (6.1%) of genes in pham
- Manual Annotations of this start: 2 of 29
- Called 100.0% of time when present
- Phage (with cluster) where this start called: Muntaha_2 (BK2), Muntaha_265 (BK2),

Summary by clusters:

There are 3 clusters represented in this pham: BM, BK1, BK2,

Info for manual annotations of cluster BK1:

- Start number 11 was manually annotated 13 times for cluster BK1.

Info for manual annotations of cluster BK2:

- Start number 8 was manually annotated 4 times for cluster BK2.
- Start number 10 was manually annotated 2 times for cluster BK2.
- Start number 13 was manually annotated 2 times for cluster BK2.

Info for manual annotations of cluster BM:

- Start number 10 was manually annotated 8 times for cluster BM.

Gene Information:

Gene: Belfort_265 Start: 126637, Stop: 126978, Start Num: 11

Candidate Starts for Belfort_265:

(Start: 11 @126637 has 13 MA's), (15, 126658), (24, 126784), (25, 126793), (30, 126862), (31, 126883), (39, 126943),

Gene: BillNye_3 Start: 1039, Stop: 1449, Start Num: 8

Candidate Starts for BillNye_3:

(7, 1030), (Start: 8 @1039 has 4 MA's), (14, 1132), (17, 1162), (24, 1249), (27, 1288), (37, 1378),

Gene: BillNye_249 Start: 125861, Stop: 126271, Start Num: 8

Candidate Starts for BillNye_249:

(7, 125852), (Start: 8 @125861 has 4 MA's), (14, 125954), (17, 125984), (24, 126071), (27, 126110), (37, 126200),

Gene: Chaewon_254 Start: 126768, Stop: 127163, Start Num: 8

Candidate Starts for Chaewon_254:

(Start: 8 @126768 has 4 MA's), (14, 126861), (17, 126891), (19, 126906), (25, 126987), (28, 127029), (32, 127074), (35, 127086), (37, 127107),

Gene: Chaewon_5 Start: 1041, Stop: 1436, Start Num: 8

Candidate Starts for Chaewon_5:

(Start: 8 @1041 has 4 MA's), (14, 1134), (17, 1164), (19, 1179), (25, 1260), (28, 1302), (32, 1347), (35, 1359), (37, 1380),

Gene: Circinus_3 Start: 1078, Stop: 1488, Start Num: 8

Candidate Starts for Circinus_3:

(7, 1069), (Start: 8 @1078 has 4 MA's), (14, 1171), (17, 1201), (24, 1288), (27, 1327), (28, 1339), (37, 1417),

Gene: Circinus_248 Start: 125405, Stop: 125815, Start Num: 8

Candidate Starts for Circinus_248:

(7, 125396), (Start: 8 @125405 has 4 MA's), (14, 125498), (17, 125528), (24, 125615), (27, 125654), (28, 125666), (37, 125744),

Gene: Comrade_260 Start: 126776, Stop: 127117, Start Num: 11

Candidate Starts for Comrade_260:

(Start: 11 @126776 has 13 MA's), (15, 126797), (24, 126923), (25, 126932), (30, 127001), (31, 127022), (39, 127082),

Gene: DeluluLabubu_266 Start: 126437, Stop: 126772, Start Num: 11

Candidate Starts for DeluluLabubu_266:

(Start: 11 @126437 has 13 MA's), (15, 126455), (19, 126497), (23, 126572), (24, 126578), (25, 126587), (28, 126641), (31, 126677), (39, 126737),

Gene: EhyElimayoE_332 Start: 178762, Stop: 178415, Start Num: 10

Candidate Starts for EhyElimayoE_332:

(Start: 10 @178762 has 10 MA's), (18, 178708), (21, 178666), (26, 178588), (28, 178570), (36, 178501), (38, 178474),

Gene: Francob_267 Start: 126631, Stop: 126966, Start Num: 11

Candidate Starts for Francob_267:

(Start: 11 @126631 has 13 MA's), (15, 126649), (19, 126691), (23, 126766), (24, 126772), (25, 126781), (28, 126835), (31, 126871), (39, 126931),

Gene: Frankenweenie_359 Start: 192379, Stop: 192002, Start Num: 10

Candidate Starts for Frankenweenie_359:

(1, 192910), (2, 192757), (3, 192715), (4, 192712), (5, 192607), (9, 192430), (Start: 10 @192379 has 10 MA's), (26, 192181), (33, 192121), (34, 192109), (35, 192106), (36, 192097), (43, 192040),

Gene: Gilson_264 Start: 126168, Stop: 126503, Start Num: 11

Candidate Starts for Gilson_264:

(Start: 11 @126168 has 13 MA's), (15, 126186), (19, 126228), (23, 126303), (24, 126309), (25, 126318), (28, 126372), (31, 126408), (39, 126468),

Gene: JustBecause_331 Start: 175882, Stop: 175484, Start Num: 10

Candidate Starts for JustBecause_331:

(6, 176047), (9, 175933), (Start: 10 @175882 has 10 MA's), (16, 175828), (28, 175660), (29, 175657), (40, 175555), (41, 175546),

Gene: Karp_265 Start: 128234, Stop: 128575, Start Num: 11

Candidate Starts for Karp_265:

(Start: 11 @128234 has 13 MA's), (15, 128255), (24, 128381), (25, 128390), (30, 128459), (31, 128480), (39, 128540),

Gene: Kela_329 Start: 176783, Stop: 176385, Start Num: 10

Candidate Starts for Kela_329:

(6, 176948), (9, 176834), (Start: 10 @176783 has 10 MA's), (16, 176729), (28, 176561), (29, 176558), (40, 176456), (41, 176447),

Gene: Kenrey_270 Start: 127380, Stop: 127718, Start Num: 11

Candidate Starts for Kenrey_270:

(Start: 11 @127380 has 13 MA's), (15, 127398), (19, 127440), (22, 127497), (23, 127521), (24, 127527), (25, 127536), (28, 127590),

Gene: Kradal_329 Start: 178759, Stop: 178412, Start Num: 10

Candidate Starts for Kradal_329:

(Start: 10 @178759 has 10 MA's), (18, 178705), (21, 178663), (26, 178585), (28, 178567), (36, 178498), (38, 178471),

Gene: Maupel_270 Start: 125361, Stop: 125696, Start Num: 11

Candidate Starts for Maupel_270:

(Start: 11 @125361 has 13 MA's), (15, 125379), (19, 125421), (23, 125496), (24, 125502), (25, 125511), (28, 125565), (31, 125601), (39, 125661),

Gene: MeganTheeKilla_266 Start: 125979, Stop: 126317, Start Num: 11

Candidate Starts for MeganTheeKilla_266:

(Start: 11 @125979 has 13 MA's), (12, 125982), (15, 125997), (19, 126039), (22, 126096), (23, 126120), (24, 126126), (25, 126135), (28, 126189),

Gene: Moab_264 Start: 127015, Stop: 127356, Start Num: 11

Candidate Starts for Moab_264:

(Start: 11 @127015 has 13 MA's), (15, 127036), (17, 127063), (20, 127081), (22, 127132), (24, 127162), (25, 127171), (28, 127225), (30, 127240), (31, 127261), (39, 127321), (42, 127339),

Gene: Muntaha_265 Start: 126426, Stop: 126731, Start Num: 13
Candidate Starts for Muntaha_265:
(Start: 13 @126426 has 2 MA's), (17, 126456), (23, 126537), (25, 126552), (28, 126594), (35, 126651),
(37, 126672), (44, 126720),

Gene: Muntaha_2 Start: 749, Stop: 1054, Start Num: 13
Candidate Starts for Muntaha_2:
(Start: 13 @749 has 2 MA's), (17, 779), (23, 860), (25, 875), (28, 917), (35, 974), (37, 995), (44, 1043),

Gene: Nirvana_362 Start: 195822, Stop: 195472, Start Num: 10
Candidate Starts for Nirvana_362:
(9, 195873), (Start: 10 @195822 has 10 MA's), (18, 195765), (21, 195723), (26, 195645), (35, 195567),
(36, 195558),

Gene: Patelgo_267 Start: 127948, Stop: 128289, Start Num: 11
Candidate Starts for Patelgo_267:
(Start: 11 @127948 has 13 MA's), (15, 127969), (17, 127996), (20, 128014), (22, 128065), (24,
128095), (25, 128104), (28, 128158), (30, 128173), (31, 128194), (39, 128254), (42, 128272),

Gene: Quantum_327 Start: 178753, Stop: 178406, Start Num: 10
Candidate Starts for Quantum_327:
(Start: 10 @178753 has 10 MA's), (18, 178699), (21, 178657), (26, 178579), (28, 178561), (36,
178492), (38, 178465),

Gene: Sarkar_343 Start: 178803, Stop: 178456, Start Num: 10
Candidate Starts for Sarkar_343:
(Start: 10 @178803 has 10 MA's), (18, 178749), (21, 178707), (26, 178629), (28, 178611), (36,
178542), (38, 178515),

Gene: Satis_329 Start: 179094, Stop: 178747, Start Num: 10
Candidate Starts for Satis_329:
(Start: 10 @179094 has 10 MA's), (18, 179040), (21, 178998), (26, 178920), (28, 178902), (36,
178833), (38, 178806),

Gene: SparkleGoddess_264 Start: 127503, Stop: 127844, Start Num: 11
Candidate Starts for SparkleGoddess_264:
(Start: 11 @127503 has 13 MA's), (15, 127524), (24, 127650), (25, 127659), (30, 127728), (31,
127749), (39, 127809),

Gene: Stigma_262 Start: 127216, Stop: 127557, Start Num: 11
Candidate Starts for Stigma_262:
(Start: 11 @127216 has 13 MA's), (15, 127237), (24, 127363), (25, 127372), (31, 127462), (39,
127522),

Gene: Wakanda_2 Start: 866, Stop: 1201, Start Num: 10
Candidate Starts for Wakanda_2:
(Start: 10 @866 has 10 MA's), (14, 899), (17, 929), (19, 944), (35, 1121), (37, 1142), (44, 1190),

Gene: Wakanda_261 Start: 125707, Stop: 126042, Start Num: 10
Candidate Starts for Wakanda_261:
(Start: 10 @125707 has 10 MA's), (14, 125740), (17, 125770), (19, 125785), (35, 125962), (37,
125983), (44, 126031),

Gene: Westy_266 Start: 128040, Stop: 128381, Start Num: 11

Candidate Starts for Westy_266:

(Start: 11 @128040 has 13 MA's), (15, 128061), (24, 128187), (25, 128196), (30, 128265), (31, 128286), (32, 128295), (34, 128304), (39, 128346),