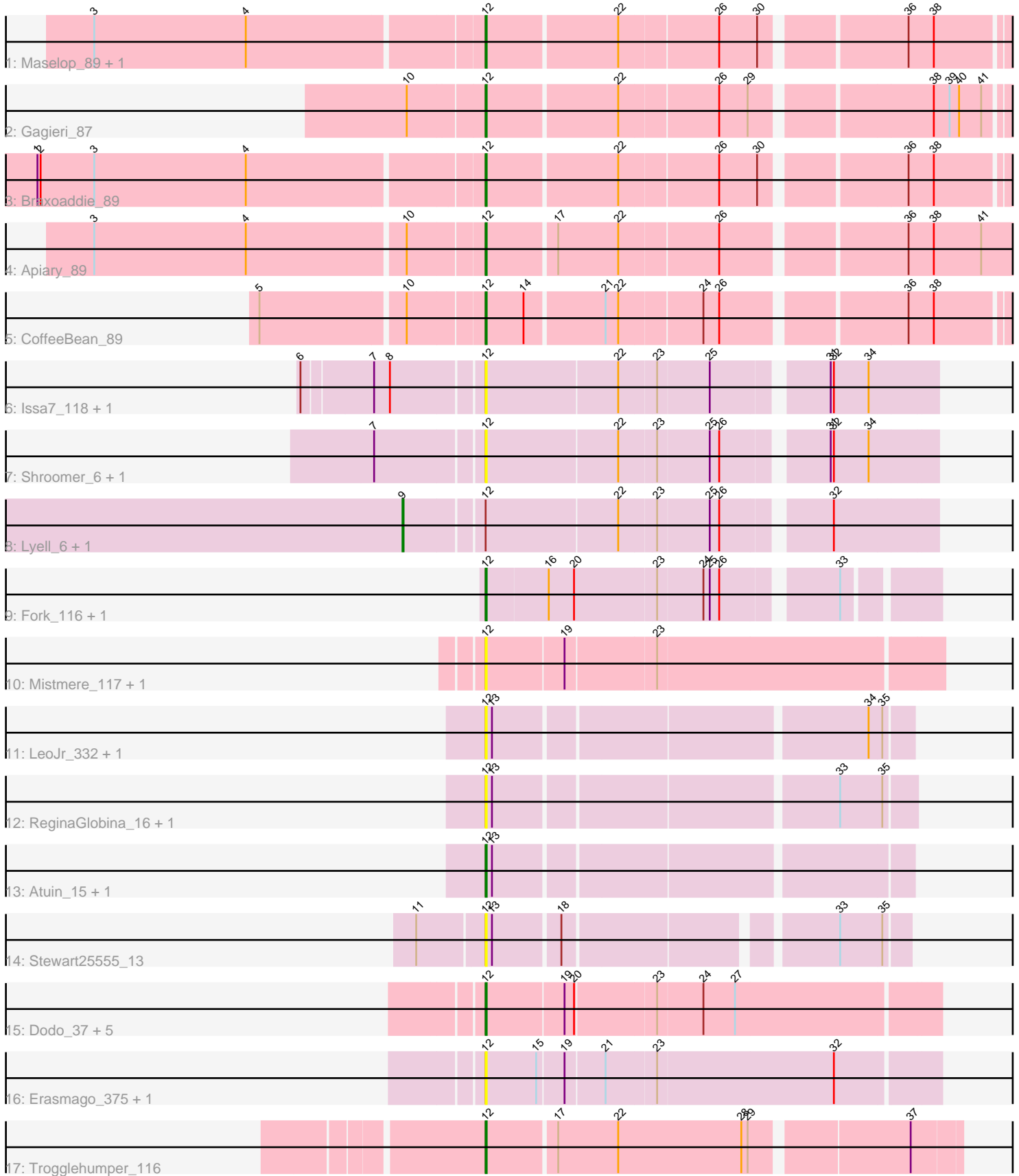


Pham 294953



Note: Tracks are now grouped by subcluster and scaled. Switching in subcluster is indicated by changes in track color. Track scale is now set by default to display the region 30 bp upstream of start 1 to 30 bp downstream of the last possible start. If this default region is judged to be packed too tightly with annotated starts, the track will be further scaled to only show that region of the ORF with annotated starts. This action will be indicated by adding "Zoomed" to the title. For starts, yellow indicates the location of called starts comprised solely of Glimmer/GeneMark auto-annotations, green indicates the location of called starts with at least 1 manual gene annotation.

Pham 294953 Report

This analysis was run 04/18/26 on database version 643.

Pham number 294953 has 32 members, 15 are drafts.

Phages represented in each track:

- Track 1 : Maselop_89, Polyuyuki_88
- Track 2 : Gagieri_87
- Track 3 : Braxoaddie_89
- Track 4 : Apiary_89
- Track 5 : CoffeeBean_89
- Track 6 : Issa7_118, Issa7_4
- Track 7 : Shroomer_6, Shroomer_125
- Track 8 : Lyell_6, Lyell_121
- Track 9 : Fork_116, Fork_4
- Track 10 : Mistmere_117, Mistmere_5
- Track 11 : LeoJr_332, LeoJr_19
- Track 12 : ReginaGlobina_16, ReginaGlobina_327
- Track 13 : Atuin_15, Atuin_315
- Track 14 : Stewart25555_13
- Track 15 : Dodo_37, PauloDiaboli_36, A3Wally_389, A3Wally_36, PauloDiaboli_391, Dodo_387
- Track 16 : Erasmago_375, Erasmago_37
- Track 17 : Trogglehumper_116

Summary of Final Annotations (See graph section above for start numbers):

The start number called the most often in the published annotations is 12, it was called in 15 of the 17 non-draft genes in the pham.

Genes that call this "Most Annotated" start:

- A3Wally_36, A3Wally_389, Apiary_89, Atuin_15, Atuin_315, Braxoaddie_89, CoffeeBean_89, Dodo_37, Dodo_387, Erasmago_37, Erasmago_375, Fork_116, Fork_4, Gagieri_87, Issa7_118, Issa7_4, LeoJr_19, LeoJr_332, Maselop_89, Mistmere_117, Mistmere_5, PauloDiaboli_36, PauloDiaboli_391, Polyuyuki_88, ReginaGlobina_16, ReginaGlobina_327, Shroomer_125, Shroomer_6, Stewart25555_13, Trogglehumper_116,

Genes that have the "Most Annotated" start but do not call it:

- Lyell_121, Lyell_6,

Genes that do not have the "Most Annotated" start:

-

Summary by start number:

Start 9:

- Found in 2 of 32 (6.2%) of genes in pham
- Manual Annotations of this start: 2 of 17
- Called 100.0% of time when present
- Phage (with cluster) where this start called: Lyell_121 (ED2), Lyell_6 (ED2),

Start 12:

- Found in 32 of 32 (100.0%) of genes in pham
- Manual Annotations of this start: 15 of 17
- Called 93.8% of time when present
- Phage (with cluster) where this start called: A3Wally_36 (GD1), A3Wally_389 (GD1), Apiary_89 (CR6), Atuin_15 (FC), Atuin_315 (FC), Braxoaddie_89 (CR6), CoffeeBean_89 (CR6), Dodo_37 (GD1), Dodo_387 (GD1), Erasmago_37 (GD2), Erasmago_375 (GD2), Fork_116 (ED2), Fork_4 (ED2), Gagieri_87 (CR6), Issa7_118 (ED2), Issa7_4 (ED2), LeoJr_19 (FC), LeoJr_332 (FC), Maselop_89 (CR6), Mistmere_117 (ED3), Mistmere_5 (ED3), PauloDiaboli_36 (GD1), PauloDiaboli_391 (GD1), Polyuyuki_88 (CR6), ReginaGlobina_16 (FC), ReginaGlobina_327 (FC), Shroomer_125 (ED2), Shroomer_6 (ED2), Stewart25555_13 (FC), Trooglehumper_116 (singleton),

Summary by clusters:

There are 7 clusters represented in this pham: GD1, singleton, CR6, GD2, ED2, ED3, FC,

Info for manual annotations of cluster CR6:

- Start number 12 was manually annotated 6 times for cluster CR6.

Info for manual annotations of cluster ED2:

- Start number 9 was manually annotated 2 times for cluster ED2.
- Start number 12 was manually annotated 2 times for cluster ED2.

Info for manual annotations of cluster FC:

- Start number 12 was manually annotated 2 times for cluster FC.

Info for manual annotations of cluster GD1:

- Start number 12 was manually annotated 4 times for cluster GD1.

Gene Information:

Gene: A3Wally_389 Start: 191584, Stop: 191994, Start Num: 12

Candidate Starts for A3Wally_389:

(Start: 12 @191584 has 15 MA's), (19, 191656), (20, 191665), (23, 191737), (24, 191779), (27, 191809),

Gene: A3Wally_36 Start: 12363, Stop: 12773, Start Num: 12

Candidate Starts for A3Wally_36:

(Start: 12 @12363 has 15 MA's), (19, 12435), (20, 12444), (23, 12516), (24, 12558), (27, 12588),

Gene: Apiary_89 Start: 62187, Stop: 62666, Start Num: 12

Candidate Starts for Apiary_89:

(3, 61830), (4, 61974), (10, 62118), (Start: 12 @62187 has 15 MA's), (17, 62250), (22, 62307), (26, 62397), (36, 62556), (38, 62580), (41, 62625),

Gene: Atuin_15 Start: 8154, Stop: 8531, Start Num: 12

Candidate Starts for Atuin_15:

(Start: 12 @8154 has 15 MA's), (13, 8160),

Gene: Atuin_315 Start: 185042, Stop: 185419, Start Num: 12

Candidate Starts for Atuin_315:

(Start: 12 @185042 has 15 MA's), (13, 185048),

Gene: Braxoaddie_89 Start: 62185, Stop: 62655, Start Num: 12

Candidate Starts for Braxoaddie_89:

(1, 61774), (2, 61777), (3, 61828), (4, 61972), (Start: 12 @62185 has 15 MA's), (22, 62305), (26, 62395), (30, 62431), (36, 62554), (38, 62578),

Gene: CoffeeBean_89 Start: 62131, Stop: 62601, Start Num: 12

Candidate Starts for CoffeeBean_89:

(5, 61930), (10, 62062), (Start: 12 @62131 has 15 MA's), (14, 62167), (21, 62239), (22, 62251), (24, 62326), (26, 62341), (36, 62500), (38, 62524),

Gene: Dodo_37 Start: 12210, Stop: 12620, Start Num: 12

Candidate Starts for Dodo_37:

(Start: 12 @12210 has 15 MA's), (19, 12282), (20, 12291), (23, 12363), (24, 12405), (27, 12435),

Gene: Dodo_387 Start: 190410, Stop: 190820, Start Num: 12

Candidate Starts for Dodo_387:

(Start: 12 @190410 has 15 MA's), (19, 190482), (20, 190491), (23, 190563), (24, 190605), (27, 190635),

Gene: Erasmago_375 Start: 188148, Stop: 188558, Start Num: 12

Candidate Starts for Erasmago_375:

(Start: 12 @188148 has 15 MA's), (15, 188196), (19, 188220), (21, 188256), (23, 188301), (32, 188466),

Gene: Erasmago_37 Start: 13639, Stop: 14049, Start Num: 12

Candidate Starts for Erasmago_37:

(Start: 12 @13639 has 15 MA's), (15, 13687), (19, 13711), (21, 13747), (23, 13792), (32, 13957),

Gene: Fork_116 Start: 60897, Stop: 60511, Start Num: 12

Candidate Starts for Fork_116:

(Start: 12 @60897 has 15 MA's), (16, 60840), (20, 60816), (23, 60741), (24, 60699), (25, 60693), (26, 60684), (33, 60588),

Gene: Fork_4 Start: 1906, Stop: 1520, Start Num: 12

Candidate Starts for Fork_4:

(Start: 12 @1906 has 15 MA's), (16, 1849), (20, 1825), (23, 1750), (24, 1708), (25, 1702), (26, 1693), (33, 1597),

Gene: Gagieri_87 Start: 61764, Stop: 62234, Start Num: 12

Candidate Starts for Gagieri_87:

(10, 61695), (Start: 12 @61764 has 15 MA's), (22, 61884), (26, 61974), (29, 62001), (38, 62157), (39, 62172), (40, 62181), (41, 62202),

Gene: Issa7_118 Start: 61084, Stop: 60686, Start Num: 12

Candidate Starts for Issa7_118:

(6, 61243), (7, 61180), (8, 61165), (Start: 12 @61084 has 15 MA's), (22, 60961), (23, 60928), (25, 60880), (31, 60784), (32, 60781), (34, 60748),

Gene: Issa7_4 Start: 1926, Stop: 1528, Start Num: 12

Candidate Starts for Issa7_4:

(6, 2085), (7, 2022), (8, 2007), (Start: 12 @1926 has 15 MA's), (22, 1803), (23, 1770), (25, 1722), (31, 1626), (32, 1623), (34, 1590),

Gene: LeoJr_332 Start: 185758, Stop: 186135, Start Num: 12

Candidate Starts for LeoJr_332:

(Start: 12 @185758 has 15 MA's), (13, 185764), (34, 186097), (35, 186109),

Gene: LeoJr_19 Start: 8455, Stop: 8832, Start Num: 12

Candidate Starts for LeoJr_19:

(Start: 12 @8455 has 15 MA's), (13, 8461), (34, 8794), (35, 8806),

Gene: Lyell_6 Start: 2101, Stop: 1634, Start Num: 9

Candidate Starts for Lyell_6:

(Start: 9 @2101 has 2 MA's), (Start: 12 @2032 has 15 MA's), (22, 1909), (23, 1876), (25, 1828), (26, 1819), (32, 1729),

Gene: Lyell_121 Start: 61268, Stop: 60801, Start Num: 9

Candidate Starts for Lyell_121:

(Start: 9 @61268 has 2 MA's), (Start: 12 @61199 has 15 MA's), (22, 61076), (23, 61043), (25, 60995), (26, 60986), (32, 60896),

Gene: Maselop_89 Start: 62196, Stop: 62666, Start Num: 12

Candidate Starts for Maselop_89:

(3, 61839), (4, 61983), (Start: 12 @62196 has 15 MA's), (22, 62316), (26, 62406), (30, 62442), (36, 62565), (38, 62589),

Gene: Mistmere_117 Start: 59358, Stop: 58945, Start Num: 12

Candidate Starts for Mistmere_117:

(Start: 12 @59358 has 15 MA's), (19, 59286), (23, 59205),

Gene: Mistmere_5 Start: 1757, Stop: 1344, Start Num: 12

Candidate Starts for Mistmere_5:

(Start: 12 @1757 has 15 MA's), (19, 1685), (23, 1604),

Gene: PauloDiaboli_36 Start: 12203, Stop: 12613, Start Num: 12

Candidate Starts for PauloDiaboli_36:

(Start: 12 @12203 has 15 MA's), (19, 12275), (20, 12284), (23, 12356), (24, 12398), (27, 12428),

Gene: PauloDiaboli_391 Start: 188832, Stop: 189242, Start Num: 12

Candidate Starts for PauloDiaboli_391:

(Start: 12 @188832 has 15 MA's), (19, 188904), (20, 188913), (23, 188985), (24, 189027), (27, 189057),

Gene: Polyuyki_88 Start: 62206, Stop: 62676, Start Num: 12

Candidate Starts for Polyuyki_88:

(3, 61849), (4, 61993), (Start: 12 @62206 has 15 MA's), (22, 62326), (26, 62416), (30, 62452), (36, 62575), (38, 62599),

Gene: ReginaGlobina_16 Start: 8305, Stop: 8685, Start Num: 12

Candidate Starts for ReginaGlobina_16:

(Start: 12 @8305 has 15 MA's), (13, 8311), (33, 8617), (35, 8656),

Gene: ReginaGlobina_327 Start: 185752, Stop: 186132, Start Num: 12

Candidate Starts for ReginaGlobina_327:

(Start: 12 @185752 has 15 MA's), (13, 185758), (33, 186064), (35, 186103),

Gene: Shroomer_6 Start: 1929, Stop: 1531, Start Num: 12

Candidate Starts for Shroomer_6:

(7, 2025), (Start: 12 @1929 has 15 MA's), (22, 1806), (23, 1773), (25, 1725), (26, 1716), (31, 1629), (32, 1626), (34, 1593),

Gene: Shroomer_125 Start: 61992, Stop: 61594, Start Num: 12

Candidate Starts for Shroomer_125:

(7, 62088), (Start: 12 @61992 has 15 MA's), (22, 61869), (23, 61836), (25, 61788), (26, 61779), (31, 61692), (32, 61689), (34, 61656),

Gene: Stewart25555_13 Start: 6240, Stop: 6602, Start Num: 12

Candidate Starts for Stewart25555_13:

(11, 6180), (Start: 12 @6240 has 15 MA's), (13, 6246), (18, 6306), (33, 6540), (35, 6579),

Gene: Trogglehumper_116 Start: 78341, Stop: 77916, Start Num: 12

Candidate Starts for Trogglehumper_116:

(Start: 12 @78341 has 15 MA's), (17, 78278), (22, 78221), (28, 78104), (29, 78098), (37, 77960),