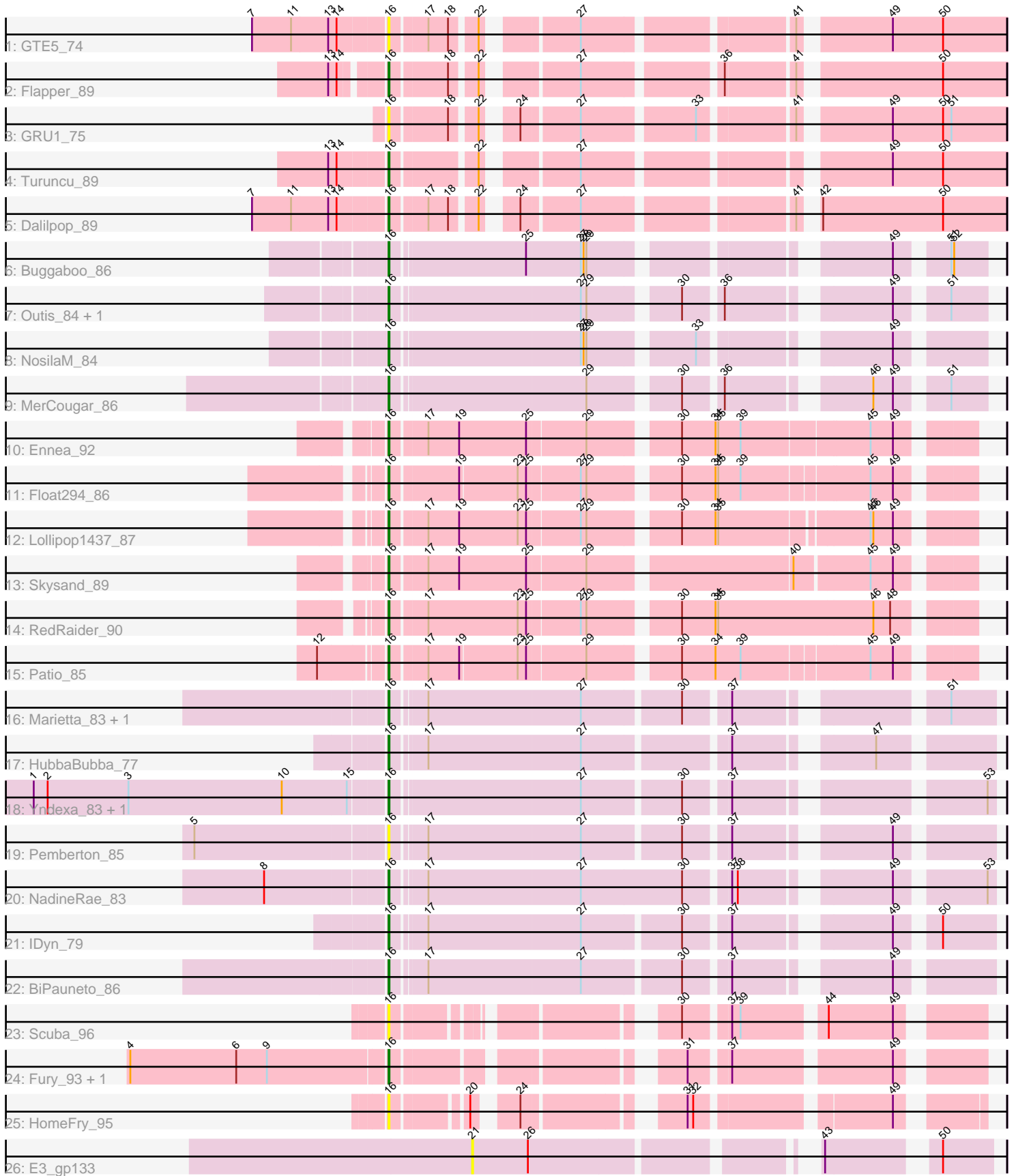


Pham 294974



Note: Tracks are now grouped by subcluster and scaled. Switching in subcluster is indicated by changes in track color. Track scale is now set by default to display the region 30 bp upstream of start 1 to 30 bp downstream of the last possible start. If this default region is judged to be packed too tightly with annotated starts, the track will be further scaled to only show that region of the ORF with annotated starts. This action will be indicated by adding "Zoomed" to the title. For starts, yellow indicates the location of called starts comprised solely of Glimmer/GeneMark auto-annotations, green indicates the location of called starts with at least 1 manual gene annotation.

Pham 294974 Report

This analysis was run 04/18/26 on database version 643.

Pham number 294974 has 30 members, 6 are drafts.

Phages represented in each track:

- Track 1 : GTE5_74
- Track 2 : Flapper_89
- Track 3 : GRU1_75
- Track 4 : Turuncu_89
- Track 5 : Dalilpop_89
- Track 6 : Buggaboo_86
- Track 7 : Outis_84, StarStruck_84
- Track 8 : NosilaM_84
- Track 9 : MerCougar_86
- Track 10 : Ennea_92
- Track 11 : Float294_86
- Track 12 : Lollipop1437_87
- Track 13 : Skysand_89
- Track 14 : RedRaider_90
- Track 15 : Patio_85
- Track 16 : Marietta_83, WhoseManz_83
- Track 17 : HubbaBubba_77
- Track 18 : Yndexa_83, Sukkupi_83
- Track 19 : Pemberton_85
- Track 20 : NadineRae_83
- Track 21 : IDyn_79
- Track 22 : BiPauneto_86
- Track 23 : Scuba_96
- Track 24 : Fury_93, Pleakley_93
- Track 25 : HomeFry_95
- Track 26 : E3_gp133

Summary of Final Annotations (See graph section above for start numbers):

The start number called the most often in the published annotations is 16, it was called in 24 of the 24 non-draft genes in the pham.

Genes that call this "Most Annotated" start:

- BiPauneto_86, Buggaboo_86, Dalilpop_89, Ennea_92, Flapper_89, Float294_86, Fury_93, GRU1_75, GTE5_74, HomeFry_95, HubbaBubba_77, IDyn_79, Lollipop1437_87, Marietta_83, MerCougar_86, NadineRae_83, NosilaM_84, Outis_84, Patio_85, Pemberton_85, Pleakley_93, RedRaider_90, Scuba_96, Skysand_89, StarStruck_84, Sukkupi_83, Turuncu_89, WhoseManz_83, Yndexa_83,

Genes that have the "Most Annotated" start but do not call it:

-

Genes that do not have the "Most Annotated" start:

- E3_gp133,

Summary by start number:

Start 16:

- Found in 29 of 30 (96.7%) of genes in pham
- Manual Annotations of this start: 24 of 24
- Called 100.0% of time when present
- Phage (with cluster) where this start called: BiPauneto_86 (CR4), Buggaboo_86 (CR2), Dalilpop_89 (CR1), Ennea_92 (CR3), Flapper_89 (CR1), Float294_86 (CR3), Fury_93 (CR5), GRU1_75 (CR1), GTE5_74 (CR1), HomeFry_95 (CR5), HubbaBubba_77 (CR4), IDyn_79 (CR4), Lollipop1437_87 (CR3), Marietta_83 (CR4), MerCougar_86 (CR2), NadineRae_83 (CR4), NosilaM_84 (CR2), Outis_84 (CR2), Patio_85 (CR3), Pemberton_85 (CR4), Pleakley_93 (CR5), RedRaider_90 (CR3), Scuba_96 (CR5), Skysand_89 (CR3), StarStruck_84 (CR2), Sukkupi_83 (CR4), Turuncu_89 (CR1), WhoseManz_83 (CR4), Yndexa_83 (CR4),

Start 21:

- Found in 1 of 30 (3.3%) of genes in pham
- No Manual Annotations of this start.
- Called 100.0% of time when present
- Phage (with cluster) where this start called: E3_gp133 (singleton),

Summary by clusters:

There are 6 clusters represented in this pham: CR2, CR3, singleton, CR1, CR4, CR5,

Info for manual annotations of cluster CR1:

- Start number 16 was manually annotated 3 times for cluster CR1.

Info for manual annotations of cluster CR2:

- Start number 16 was manually annotated 5 times for cluster CR2.

Info for manual annotations of cluster CR3:

- Start number 16 was manually annotated 6 times for cluster CR3.

Info for manual annotations of cluster CR4:

- Start number 16 was manually annotated 8 times for cluster CR4.

Info for manual annotations of cluster CR5:

- Start number 16 was manually annotated 2 times for cluster CR5.

Gene Information:

Gene: BiPauneto_86 Start: 61366, Stop: 61935, Start Num: 16

Candidate Starts for BiPauneto_86:

(Start: 16 @61366 has 24 MA's), (17, 61399), (27, 61561), (30, 61660), (37, 61702), (49, 61843),

Gene: Buggaboo_86 Start: 63771, Stop: 64322, Start Num: 16

Candidate Starts for Buggaboo_86:

(Start: 16 @63771 has 24 MA's), (25, 63909), (27, 63966), (28, 63969), (29, 63972), (49, 64239), (51, 64284), (52, 64287),

Gene: Dalilpop_89 Start: 63669, Stop: 64238, Start Num: 16

Candidate Starts for Dalilpop_89:

(7, 63531), (11, 63573), (13, 63612), (14, 63621), (Start: 16 @63669 has 24 MA's), (17, 63705), (18, 63726), (22, 63750), (24, 63774), (27, 63831), (41, 64032), (42, 64041), (50, 64170),

Gene: E3_gp133 Start: 88048, Stop: 88518, Start Num: 21

Candidate Starts for E3_gp133:

(21, 88048), (26, 88108), (43, 88366), (50, 88465),

Gene: Ennea_92 Start: 63889, Stop: 64464, Start Num: 16

Candidate Starts for Ennea_92:

(Start: 16 @63889 has 24 MA's), (17, 63925), (19, 63958), (25, 64030), (29, 64090), (30, 64174), (34, 64210), (35, 64213), (39, 64237), (45, 64369), (49, 64393),

Gene: Flapper_89 Start: 63538, Stop: 64107, Start Num: 16

Candidate Starts for Flapper_89:

(13, 63490), (14, 63499), (Start: 16 @63538 has 24 MA's), (18, 63595), (22, 63619), (27, 63700), (36, 63832), (41, 63901), (50, 64039),

Gene: Float294_86 Start: 63789, Stop: 64358, Start Num: 16

Candidate Starts for Float294_86:

(Start: 16 @63789 has 24 MA's), (19, 63858), (23, 63918), (25, 63927), (27, 63981), (29, 63987), (30, 64071), (34, 64107), (35, 64110), (39, 64134), (45, 64263), (49, 64287),

Gene: Fury_93 Start: 61531, Stop: 62052, Start Num: 16

Candidate Starts for Fury_93:

(4, 61261), (6, 61375), (9, 61408), (Start: 16 @61531 has 24 MA's), (31, 61783), (37, 61819), (49, 61975),

Gene: GRU1_75 Start: 55116, Stop: 55685, Start Num: 16

Candidate Starts for GRU1_75:

(Start: 16 @55116 has 24 MA's), (18, 55173), (22, 55197), (24, 55221), (27, 55278), (33, 55389), (41, 55479), (49, 55563), (50, 55617), (51, 55626),

Gene: GTE5_74 Start: 56009, Stop: 56578, Start Num: 16

Candidate Starts for GTE5_74:

(7, 55871), (11, 55913), (13, 55952), (14, 55961), (Start: 16 @56009 has 24 MA's), (17, 56045), (18, 56066), (22, 56090), (27, 56171), (41, 56372), (49, 56456), (50, 56510),

Gene: HomeFry_95 Start: 60610, Stop: 61113, Start Num: 16

Candidate Starts for HomeFry_95:

(Start: 16 @60610 has 24 MA's), (20, 60679), (24, 60712), (31, 60850), (32, 60856), (49, 61039),

Gene: HubbaBubba_77 Start: 57693, Stop: 58262, Start Num: 16
Candidate Starts for HubbaBubba_77:
(Start: 16 @57693 has 24 MA's), (17, 57726), (27, 57888), (37, 58029), (47, 58152),

Gene: IDyn_79 Start: 58347, Stop: 58916, Start Num: 16
Candidate Starts for IDyn_79:
(Start: 16 @58347 has 24 MA's), (17, 58380), (27, 58542), (30, 58641), (37, 58683), (49, 58824), (50, 58860),

Gene: Lollipop1437_87 Start: 63571, Stop: 64140, Start Num: 16
Candidate Starts for Lollipop1437_87:
(Start: 16 @63571 has 24 MA's), (17, 63607), (19, 63640), (23, 63703), (25, 63712), (27, 63766), (29, 63772), (30, 63856), (34, 63892), (35, 63895), (45, 64045), (46, 64048), (49, 64069),

Gene: Marietta_83 Start: 59020, Stop: 59589, Start Num: 16
Candidate Starts for Marietta_83:
(Start: 16 @59020 has 24 MA's), (17, 59053), (27, 59215), (30, 59314), (37, 59356), (51, 59542),

Gene: MerCougar_86 Start: 63955, Stop: 64506, Start Num: 16
Candidate Starts for MerCougar_86:
(Start: 16 @63955 has 24 MA's), (29, 64156), (30, 64240), (36, 64276), (46, 64402), (49, 64423), (51, 64468),

Gene: NadineRae_83 Start: 58857, Stop: 59435, Start Num: 16
Candidate Starts for NadineRae_83:
(8, 58734), (Start: 16 @58857 has 24 MA's), (17, 58890), (27, 59052), (30, 59160), (37, 59202), (38, 59208), (49, 59343), (53, 59427),

Gene: NosilaM_84 Start: 62812, Stop: 63363, Start Num: 16
Candidate Starts for NosilaM_84:
(Start: 16 @62812 has 24 MA's), (27, 63007), (28, 63010), (29, 63013), (33, 63112), (49, 63280),

Gene: Outis_84 Start: 63228, Stop: 63779, Start Num: 16
Candidate Starts for Outis_84:
(Start: 16 @63228 has 24 MA's), (27, 63423), (29, 63429), (30, 63513), (36, 63549), (49, 63696), (51, 63741),

Gene: Patio_85 Start: 62788, Stop: 63357, Start Num: 16
Candidate Starts for Patio_85:
(12, 62725), (Start: 16 @62788 has 24 MA's), (17, 62824), (19, 62857), (23, 62917), (25, 62926), (29, 62986), (30, 63070), (34, 63106), (39, 63133), (45, 63262), (49, 63286),

Gene: Pemberton_85 Start: 59267, Stop: 59836, Start Num: 16
Candidate Starts for Pemberton_85:
(5, 59069), (Start: 16 @59267 has 24 MA's), (17, 59300), (27, 59462), (30, 59561), (37, 59603), (49, 59744),

Gene: Pleakley_93 Start: 61532, Stop: 62053, Start Num: 16
Candidate Starts for Pleakley_93:
(4, 61262), (6, 61376), (9, 61409), (Start: 16 @61532 has 24 MA's), (31, 61784), (37, 61820), (49, 61976),

Gene: RedRaider_90 Start: 64988, Stop: 65569, Start Num: 16

Candidate Starts for RedRaider_90:

(Start: 16 @64988 has 24 MA's), (17, 65024), (23, 65120), (25, 65129), (27, 65183), (29, 65189), (30, 65273), (34, 65309), (35, 65312), (46, 65477), (48, 65495),

Gene: Scuba_96 Start: 61876, Stop: 62385, Start Num: 16

Candidate Starts for Scuba_96:

(Start: 16 @61876 has 24 MA's), (30, 62110), (37, 62152), (39, 62161), (44, 62239), (49, 62308),

Gene: Skysand_89 Start: 63735, Stop: 64307, Start Num: 16

Candidate Starts for Skysand_89:

(Start: 16 @63735 has 24 MA's), (17, 63771), (19, 63804), (25, 63876), (29, 63936), (40, 64137), (45, 64212), (49, 64236),

Gene: StarStruck_84 Start: 63228, Stop: 63779, Start Num: 16

Candidate Starts for StarStruck_84:

(Start: 16 @63228 has 24 MA's), (27, 63423), (29, 63429), (30, 63513), (36, 63549), (49, 63696), (51, 63741),

Gene: Sukkupi_83 Start: 60734, Stop: 61303, Start Num: 16

Candidate Starts for Sukkupi_83:

(1, 60362), (2, 60377), (3, 60464), (10, 60629), (15, 60698), (Start: 16 @60734 has 24 MA's), (27, 60929), (30, 61028), (37, 61070), (53, 61295),

Gene: Turuncu_89 Start: 63164, Stop: 63733, Start Num: 16

Candidate Starts for Turuncu_89:

(13, 63107), (14, 63116), (Start: 16 @63164 has 24 MA's), (22, 63245), (27, 63326), (49, 63611), (50, 63665),

Gene: WhoseManz_83 Start: 58680, Stop: 59249, Start Num: 16

Candidate Starts for WhoseManz_83:

(Start: 16 @58680 has 24 MA's), (17, 58713), (27, 58875), (30, 58974), (37, 59016), (51, 59202),

Gene: Yndexa_83 Start: 60734, Stop: 61303, Start Num: 16

Candidate Starts for Yndexa_83:

(1, 60362), (2, 60377), (3, 60464), (10, 60629), (15, 60698), (Start: 16 @60734 has 24 MA's), (27, 60929), (30, 61028), (37, 61070), (53, 61295),