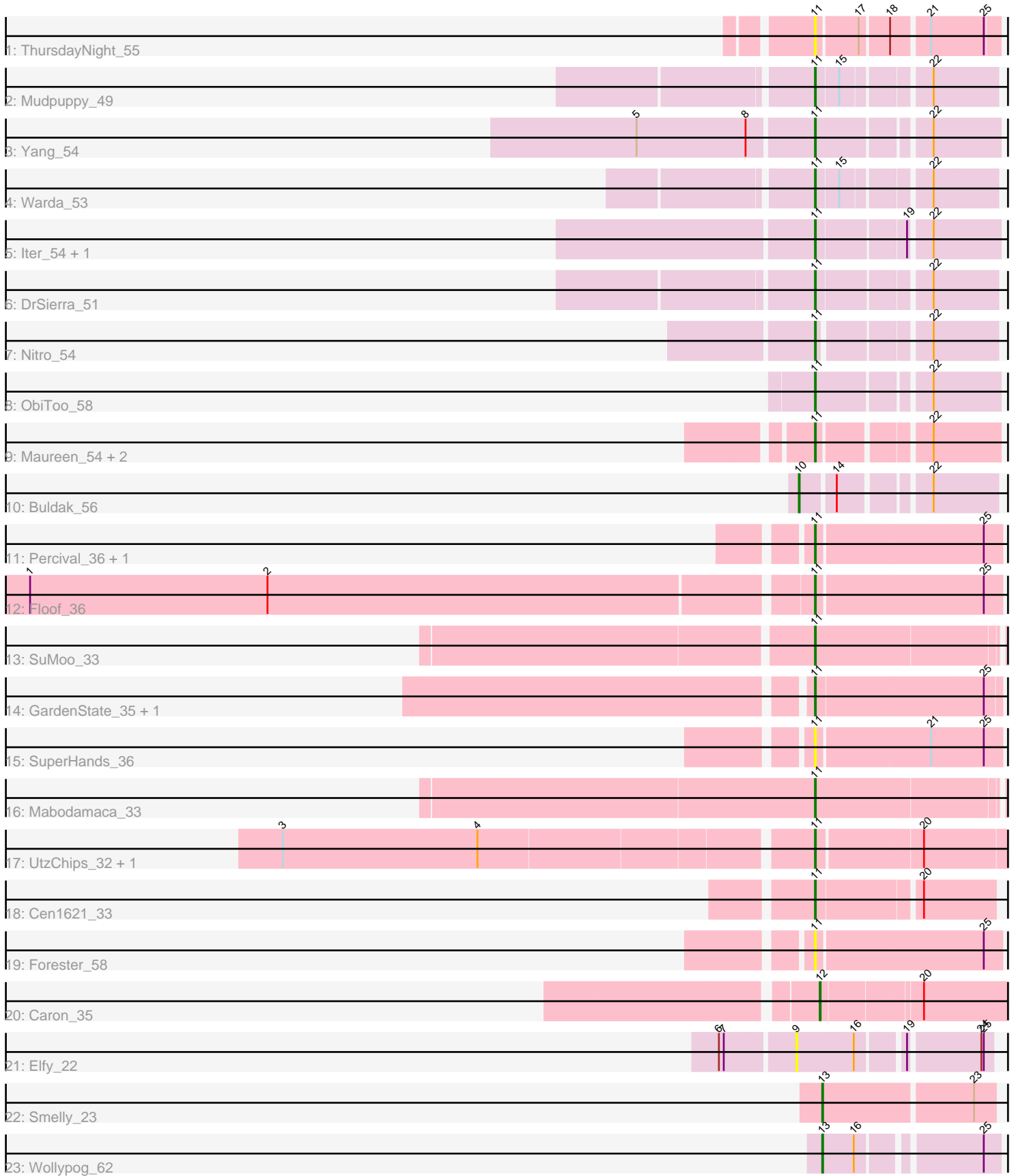


Pham 294986



Note: Tracks are now grouped by subcluster and scaled. Switching in subcluster is indicated by changes in track color. Track scale is now set by default to display the region 30 bp upstream of start 1 to 30 bp downstream of the last possible start. If this default region is judged to be packed too tightly with annotated starts, the track will be further scaled to only show that region of the ORF with annotated starts. This action will be indicated by adding "Zoomed" to the title. For starts, yellow indicates the location of called starts comprised solely of Glimmer/GeneMark auto-annotations, green indicates the location of called starts with at least 1 manual gene annotation.

## Pham 294986 Report

This analysis was run 04/18/26 on database version 643.

Pham number 294986 has 29 members, 5 are drafts.

Phages represented in each track:

- Track 1 : ThursdayNight\_55
- Track 2 : Mudpuppy\_49
- Track 3 : Yang\_54
- Track 4 : Warda\_53
- Track 5 : Iter\_54, Ascela\_54
- Track 6 : DrSierra\_51
- Track 7 : Nitro\_54
- Track 8 : ObiToo\_58
- Track 9 : Maureen\_54, IUFootball\_54, Liebe\_54
- Track 10 : Buldak\_56
- Track 11 : Percival\_36, Gretchen\_36
- Track 12 : Floof\_36
- Track 13 : SuMoo\_33
- Track 14 : GardenState\_35, IAmGroot\_35
- Track 15 : SuperHands\_36
- Track 16 : Mabodamaca\_33
- Track 17 : UtzChips\_32, Barnstormer\_32
- Track 18 : Cen1621\_33
- Track 19 : Forester\_58
- Track 20 : Caron\_35
- Track 21 : Elfy\_22
- Track 22 : Smelly\_23
- Track 23 : Wollypog\_62

### ***Summary of Final Annotations (See graph section above for start numbers):***

The start number called the most often in the published annotations is 11, it was called in 20 of the 24 non-draft genes in the pham.

Genes that call this "Most Annotated" start:

- Ascela\_54, Barnstormer\_32, Cen1621\_33, DrSierra\_51, Floof\_36, Forester\_58, GardenState\_35, Gretchen\_36, IAmGroot\_35, IUFootball\_54, Iter\_54, Liebe\_54, Mabodamaca\_33, Maureen\_54, Mudpuppy\_49, Nitro\_54, ObiToo\_58, Percival\_36, SuMoo\_33, SuperHands\_36, ThursdayNight\_55, UtzChips\_32, Warda\_53, Yang\_54,

Genes that have the "Most Annotated" start but do not call it:

- 

Genes that do not have the "Most Annotated" start:

- Buldak\_56, Caron\_35, Elfy\_22, Smelly\_23, Wollypog\_62,

### Summary by start number:

Start 9:

- Found in 1 of 29 ( 3.4% ) of genes in pham
- No Manual Annotations of this start.
- Called 100.0% of time when present
- Phage (with cluster) where this start called: Elfy\_22 (FP),

Start 10:

- Found in 1 of 29 ( 3.4% ) of genes in pham
- Manual Annotations of this start: 1 of 24
- Called 100.0% of time when present
- Phage (with cluster) where this start called: Buldak\_56 (EB),

Start 11:

- Found in 24 of 29 ( 82.8% ) of genes in pham
- Manual Annotations of this start: 20 of 24
- Called 100.0% of time when present
- Phage (with cluster) where this start called: Ascela\_54 (AZ1), Barnstormer\_32 (EH), Cen1621\_33 (EH), DrSierra\_51 (AZ1), Floof\_36 (EH), Forester\_58 (EH), GardenState\_35 (EH), Gretchen\_36 (EH), IAmGroot\_35 (EH), IUFootball\_54 (AZ2), Iter\_54 (AZ1), Liebe\_54 (AZ2), Mabodamaca\_33 (EH), Maureen\_54 (AZ2), Mudpuppy\_49 (AZ1), Nitro\_54 (AZ1), ObiToo\_58 (AZ1), Percival\_36 (EH), SuMoo\_33 (EH), SuperHands\_36 (EH), ThursdayNight\_55 (AZ), UtzChips\_32 (EH), Warda\_53 (AZ1), Yang\_54 (AZ1),

Start 12:

- Found in 1 of 29 ( 3.4% ) of genes in pham
- Manual Annotations of this start: 1 of 24
- Called 100.0% of time when present
- Phage (with cluster) where this start called: Caron\_35 (EH),

Start 13:

- Found in 2 of 29 ( 6.9% ) of genes in pham
- Manual Annotations of this start: 2 of 24
- Called 100.0% of time when present
- Phage (with cluster) where this start called: Smelly\_23 (GK), Wollypog\_62 (singleton),

### Summary by clusters:

There are 8 clusters represented in this pham: FP, singleton, EH, EB, AZ1, AZ2, AZ, GK,

Info for manual annotations of cluster AZ1:

- Start number 11 was manually annotated 8 times for cluster AZ1.

Info for manual annotations of cluster AZ2:

- Start number 11 was manually annotated 2 times for cluster AZ2.

Info for manual annotations of cluster EB:

- Start number 10 was manually annotated 1 time for cluster EB.

Info for manual annotations of cluster EH:

- Start number 11 was manually annotated 10 times for cluster EH.
- Start number 12 was manually annotated 1 time for cluster EH.

Info for manual annotations of cluster GK:

- Start number 13 was manually annotated 1 time for cluster GK.

### ***Gene Information:***

Gene: Ascela\_54 Start: 38184, Stop: 38390, Start Num: 11

Candidate Starts for Ascela\_54:

(Start: 11 @38184 has 20 MA's), (19, 38286), (22, 38310),

Gene: Barnstormer\_32 Start: 23785, Stop: 24018, Start Num: 11

Candidate Starts for Barnstormer\_32:

(3, 23161), (4, 23401), (Start: 11 @23785 has 20 MA's), (20, 23908),

Gene: Buldak\_56 Start: 36115, Stop: 36327, Start Num: 10

Candidate Starts for Buldak\_56:

(Start: 10 @36115 has 1 MA's), (14, 36154), (22, 36250),

Gene: Caron\_35 Start: 24264, Stop: 24491, Start Num: 12

Candidate Starts for Caron\_35:

(Start: 12 @24264 has 1 MA's), (20, 24378),

Gene: Cen1621\_33 Start: 23276, Stop: 23482, Start Num: 11

Candidate Starts for Cen1621\_33:

(Start: 11 @23276 has 20 MA's), (20, 23396),

Gene: DrSierra\_51 Start: 36255, Stop: 36458, Start Num: 11

Candidate Starts for DrSierra\_51:

(Start: 11 @36255 has 20 MA's), (22, 36381),

Gene: Elfy\_22 Start: 19143, Stop: 19358, Start Num: 9

Candidate Starts for Elfy\_22:

(6, 19056), (7, 19062), (9, 19143), (16, 19212), (19, 19263), (24, 19344), (25, 19347),

Gene: Floof\_36 Start: 25209, Stop: 25427, Start Num: 11

Candidate Starts for Floof\_36:

(1, 24261), (2, 24555), (Start: 11 @25209 has 20 MA's), (25, 25407),

Gene: Forester\_58 Start: 26635, Stop: 26853, Start Num: 11

Candidate Starts for Forester\_58:  
(Start: 11 @26635 has 20 MA's), (25, 26833),

Gene: GardenState\_35 Start: 24724, Stop: 24942, Start Num: 11  
Candidate Starts for GardenState\_35:  
(Start: 11 @24724 has 20 MA's), (25, 24925),

Gene: Gretchen\_36 Start: 26317, Stop: 26535, Start Num: 11  
Candidate Starts for Gretchen\_36:  
(Start: 11 @26317 has 20 MA's), (25, 26515),

Gene: IAmGroot\_35 Start: 25389, Stop: 25607, Start Num: 11  
Candidate Starts for IAmGroot\_35:  
(Start: 11 @25389 has 20 MA's), (25, 25590),

Gene: IUFootball\_54 Start: 39610, Stop: 39810, Start Num: 11  
Candidate Starts for IUFootball\_54:  
(Start: 11 @39610 has 20 MA's), (22, 39730),

Gene: Iter\_54 Start: 38176, Stop: 38382, Start Num: 11  
Candidate Starts for Iter\_54:  
(Start: 11 @38176 has 20 MA's), (19, 38278), (22, 38302),

Gene: Liebe\_54 Start: 39610, Stop: 39810, Start Num: 11  
Candidate Starts for Liebe\_54:  
(Start: 11 @39610 has 20 MA's), (22, 39730),

Gene: Mabodamaca\_33 Start: 24562, Stop: 24792, Start Num: 11  
Candidate Starts for Mabodamaca\_33:  
(Start: 11 @24562 has 20 MA's),

Gene: Maureen\_54 Start: 39609, Stop: 39809, Start Num: 11  
Candidate Starts for Maureen\_54:  
(Start: 11 @39609 has 20 MA's), (22, 39729),

Gene: Mudpuppy\_49 Start: 37133, Stop: 37333, Start Num: 11  
Candidate Starts for Mudpuppy\_49:  
(Start: 11 @37133 has 20 MA's), (15, 37160), (22, 37256),

Gene: Nitro\_54 Start: 39215, Stop: 39412, Start Num: 11  
Candidate Starts for Nitro\_54:  
(Start: 11 @39215 has 20 MA's), (22, 39335),

Gene: ObiToo\_58 Start: 38862, Stop: 39068, Start Num: 11  
Candidate Starts for ObiToo\_58:  
(Start: 11 @38862 has 20 MA's), (22, 38988),

Gene: Percival\_36 Start: 26151, Stop: 26369, Start Num: 11  
Candidate Starts for Percival\_36:  
(Start: 11 @26151 has 20 MA's), (25, 26349),

Gene: Smelly\_23 Start: 17195, Stop: 17398, Start Num: 13  
Candidate Starts for Smelly\_23:

(Start: 13 @17195 has 2 MA's), (23, 17372),

Gene: SuMoo\_33 Start: 23508, Stop: 23738, Start Num: 11

Candidate Starts for SuMoo\_33:

(Start: 11 @23508 has 20 MA's),

Gene: SuperHands\_36 Start: 26654, Stop: 26872, Start Num: 11

Candidate Starts for SuperHands\_36:

(Start: 11 @26654 has 20 MA's), (21, 26789), (25, 26852),

Gene: ThursdayNight\_55 Start: 38698, Stop: 38901, Start Num: 11

Candidate Starts for ThursdayNight\_55:

(Start: 11 @38698 has 20 MA's), (17, 38746), (18, 38779), (21, 38821), (25, 38884),

Gene: UtzChips\_32 Start: 23770, Stop: 24003, Start Num: 11

Candidate Starts for UtzChips\_32:

(3, 23146), (4, 23386), (Start: 11 @23770 has 20 MA's), (20, 23893),

Gene: Warda\_53 Start: 37573, Stop: 37773, Start Num: 11

Candidate Starts for Warda\_53:

(Start: 11 @37573 has 20 MA's), (15, 37600), (22, 37696),

Gene: Wollypog\_62 Start: 47163, Stop: 47354, Start Num: 13

Candidate Starts for Wollypog\_62:

(Start: 13 @47163 has 2 MA's), (16, 47202), (25, 47334),

Gene: Yang\_54 Start: 38204, Stop: 38410, Start Num: 11

Candidate Starts for Yang\_54:

(5, 37991), (8, 38126), (Start: 11 @38204 has 20 MA's), (22, 38330),