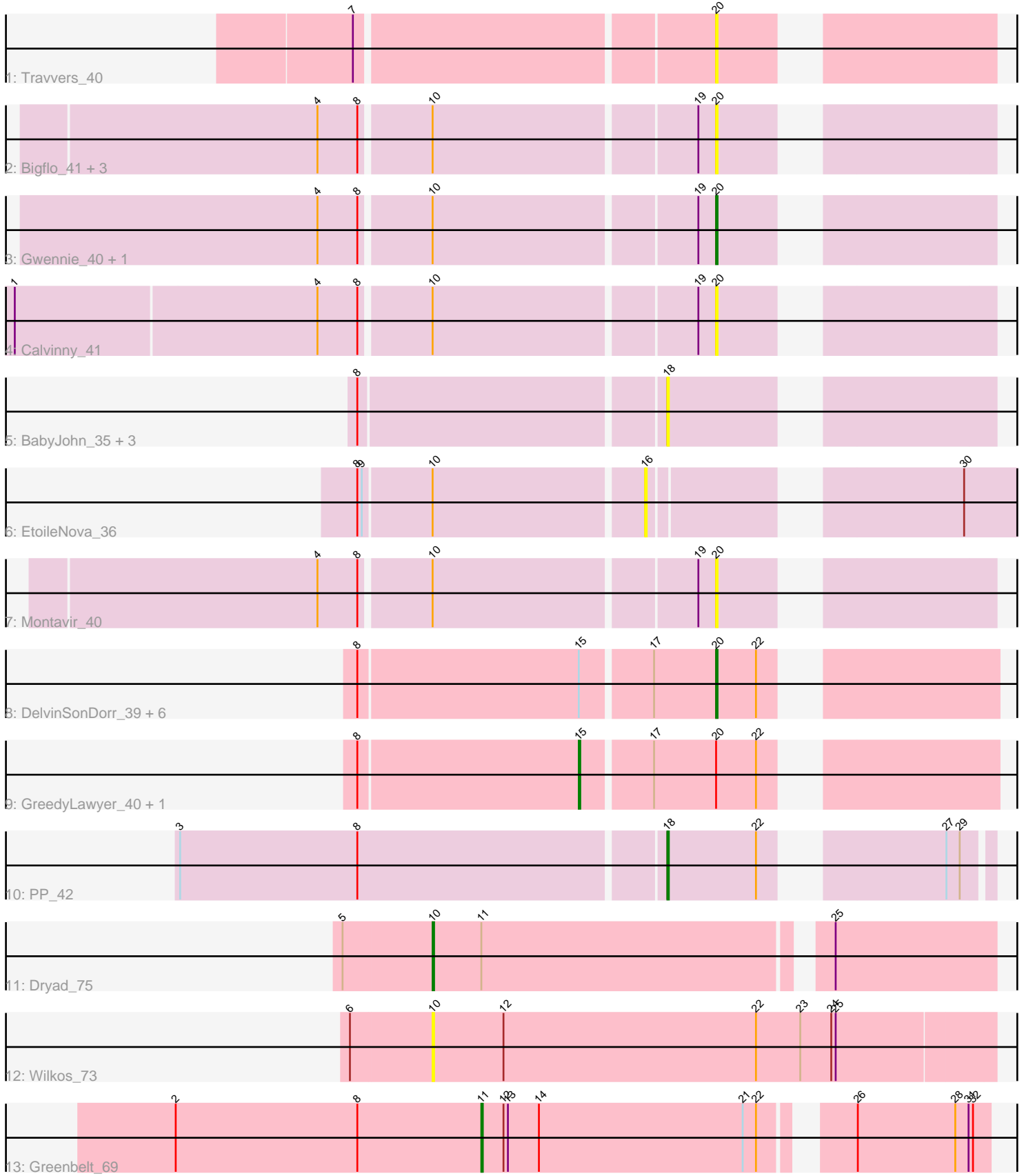


Pham 295007



Note: Tracks are now grouped by subcluster and scaled. Switching in subcluster is indicated by changes in track color. Track scale is now set by default to display the region 30 bp upstream of start 1 to 30 bp downstream of the last possible start. If this default region is judged to be packed too tightly with annotated starts, the track will be further scaled to only show that region of the ORF with annotated starts. This action will be indicated by adding "Zoomed" to the title. For starts, yellow indicates the location of called starts comprised solely of Glimmer/GeneMark auto-annotations, green indicates the location of called starts with at least 1 manual gene annotation.

Pham 295007 Report

This analysis was run 04/18/26 on database version 643.

Pham number 295007 has 27 members, 18 are drafts.

Phages represented in each track:

- Track 1 : Travvers_40
- Track 2 : Bigflo_41, ClownCar_41, Croquant_42, Lowa_41
- Track 3 : Gwennie_40, Colbster_41
- Track 4 : Calvinny_41
- Track 5 : BabyJohn_35, Zarafa_36, Chiqui_35, DropBear_36
- Track 6 : EtoileNova_36
- Track 7 : Montavir_40
- Track 8 : DelvinSonDorr_39, Garak_41, SuperCallie99_40, Candra_40, EricB_40, BennyP_40, Pmask_40
- Track 9 : GreedyLawyer_40, DaVinci_40
- Track 10 : PP_42
- Track 11 : Dryad_75
- Track 12 : Wilkos_73
- Track 13 : Greenbelt_69

Summary of Final Annotations (See graph section above for start numbers):

The start number called the most often in the published annotations is 20, it was called in 4 of the 9 non-draft genes in the pham.

Genes that call this "Most Annotated" start:

- BennyP_40, Bigflo_41, Calvinny_41, Candra_40, ClownCar_41, Colbster_41, Croquant_42, DelvinSonDorr_39, EricB_40, Garak_41, Gwennie_40, Lowa_41, Montavir_40, Pmask_40, SuperCallie99_40, Travvers_40,

Genes that have the "Most Annotated" start but do not call it:

- DaVinci_40, GreedyLawyer_40,

Genes that do not have the "Most Annotated" start:

- BabyJohn_35, Chiqui_35, DropBear_36, Dryad_75, EtoileNova_36, Greenbelt_69, PP_42, Wilkos_73, Zarafa_36,

Summary by start number:

Start 10:

- Found in 11 of 27 (40.7%) of genes in pham
- Manual Annotations of this start: 1 of 9
- Called 18.2% of time when present
- Phage (with cluster) where this start called: Dryad_75 (BN), Wilkos_73 (BN),

Start 11:

- Found in 2 of 27 (7.4%) of genes in pham
- Manual Annotations of this start: 1 of 9
- Called 50.0% of time when present
- Phage (with cluster) where this start called: Greenbelt_69 (BN),

Start 15:

- Found in 9 of 27 (33.3%) of genes in pham
- Manual Annotations of this start: 2 of 9
- Called 22.2% of time when present
- Phage (with cluster) where this start called: DaVinci_40 (A6), GreedyLawyer_40 (A6),

Start 16:

- Found in 1 of 27 (3.7%) of genes in pham
- No Manual Annotations of this start.
- Called 100.0% of time when present
- Phage (with cluster) where this start called: EtoileNova_36 (A3),

Start 18:

- Found in 5 of 27 (18.5%) of genes in pham
- Manual Annotations of this start: 1 of 9
- Called 100.0% of time when present
- Phage (with cluster) where this start called: BabyJohn_35 (A3), Chiqui_35 (A3), DropBear_36 (A3), PP_42 (A7), Zarafa_36 (A3),

Start 20:

- Found in 18 of 27 (66.7%) of genes in pham
- Manual Annotations of this start: 4 of 9
- Called 88.9% of time when present
- Phage (with cluster) where this start called: BennyP_40 (A6), Bigflo_41 (A3), Calvinny_41 (A3), Candra_40 (A6), ClownCar_41 (A3), Colbster_41 (A3), Croquant_42 (A3), DelvinSonDorr_39 (A6), EricB_40 (A6), Garak_41 (A6), Gwennie_40 (A3), Lova_41 (A3), Montavir_40 (A3), Pmask_40 (A6), SuperCallie99_40 (A6), Travvers_40 (A2),

Summary by clusters:

There are 5 clusters represented in this pham: A3, A2, BN, A7, A6,

Info for manual annotations of cluster A3:

- Start number 20 was manually annotated 1 time for cluster A3.

Info for manual annotations of cluster A6:

- Start number 15 was manually annotated 2 times for cluster A6.
- Start number 20 was manually annotated 3 times for cluster A6.

Info for manual annotations of cluster A7:

- Start number 18 was manually annotated 1 time for cluster A7.

Info for manual annotations of cluster BN:

- Start number 10 was manually annotated 1 time for cluster BN.
- Start number 11 was manually annotated 1 time for cluster BN.

Gene Information:

Gene: BabyJohn_35 Start: 27894, Stop: 27706, Start Num: 18

Candidate Starts for BabyJohn_35:

(8, 28092), (Start: 18 @27894 has 1 MA's),

Gene: BennyP_40 Start: 26382, Stop: 26224, Start Num: 20

Candidate Starts for BennyP_40:

(8, 26616), (Start: 15 @26469 has 2 MA's), (17, 26424), (Start: 20 @26382 has 4 MA's), (22, 26355),

Gene: Bigflo_41 Start: 28347, Stop: 28192, Start Num: 20

Candidate Starts for Bigflo_41:

(4, 28602), (8, 28575), (Start: 10 @28530 has 1 MA's), (19, 28359), (Start: 20 @28347 has 4 MA's),

Gene: Calvinny_41 Start: 28173, Stop: 28018, Start Num: 20

Candidate Starts for Calvinny_41:

(1, 28629), (4, 28428), (8, 28401), (Start: 10 @28356 has 1 MA's), (19, 28185), (Start: 20 @28173 has 4 MA's),

Gene: Candra_40 Start: 26418, Stop: 26260, Start Num: 20

Candidate Starts for Candra_40:

(8, 26652), (Start: 15 @26505 has 2 MA's), (17, 26460), (Start: 20 @26418 has 4 MA's), (22, 26391),

Gene: Chiqui_35 Start: 27903, Stop: 27715, Start Num: 18

Candidate Starts for Chiqui_35:

(8, 28101), (Start: 18 @27903 has 1 MA's),

Gene: ClownCar_41 Start: 28165, Stop: 28010, Start Num: 20

Candidate Starts for ClownCar_41:

(4, 28420), (8, 28393), (Start: 10 @28348 has 1 MA's), (19, 28177), (Start: 20 @28165 has 4 MA's),

Gene: Colbster_41 Start: 28348, Stop: 28193, Start Num: 20

Candidate Starts for Colbster_41:

(4, 28603), (8, 28576), (Start: 10 @28531 has 1 MA's), (19, 28360), (Start: 20 @28348 has 4 MA's),

Gene: Croquant_42 Start: 28346, Stop: 28191, Start Num: 20

Candidate Starts for Croquant_42:

(4, 28601), (8, 28574), (Start: 10 @28529 has 1 MA's), (19, 28358), (Start: 20 @28346 has 4 MA's),

Gene: DaVinci_40 Start: 26470, Stop: 26225, Start Num: 15

Candidate Starts for DaVinci_40:

(8, 26617), (Start: 15 @26470 has 2 MA's), (17, 26425), (Start: 20 @26383 has 4 MA's), (22, 26356),

Gene: DelvinSonDorr_39 Start: 26378, Stop: 26220, Start Num: 20
Candidate Starts for DelvinSonDorr_39:
(8, 26612), (Start: 15 @26465 has 2 MA's), (17, 26420), (Start: 20 @26378 has 4 MA's), (22, 26351),

Gene: DropBear_36 Start: 27668, Stop: 27480, Start Num: 18
Candidate Starts for DropBear_36:
(8, 27866), (Start: 18 @27668 has 1 MA's),

Gene: Dryad_75 Start: 51427, Stop: 51068, Start Num: 10
Candidate Starts for Dryad_75:
(5, 51487), (Start: 10 @51427 has 1 MA's), (Start: 11 @51394 has 1 MA's), (25, 51175),

Gene: EricB_40 Start: 26375, Stop: 26217, Start Num: 20
Candidate Starts for EricB_40:
(8, 26609), (Start: 15 @26462 has 2 MA's), (17, 26417), (Start: 20 @26375 has 4 MA's), (22, 26348),

Gene: EtoileNova_36 Start: 27630, Stop: 27385, Start Num: 16
Candidate Starts for EtoileNova_36:
(8, 27816), (9, 27813), (Start: 10 @27768 has 1 MA's), (16, 27630), (30, 27453),

Gene: Garak_41 Start: 26383, Stop: 26225, Start Num: 20
Candidate Starts for Garak_41:
(8, 26617), (Start: 15 @26470 has 2 MA's), (17, 26425), (Start: 20 @26383 has 4 MA's), (22, 26356),

Gene: GreedyLawyer_40 Start: 26469, Stop: 26224, Start Num: 15
Candidate Starts for GreedyLawyer_40:
(8, 26616), (Start: 15 @26469 has 2 MA's), (17, 26424), (Start: 20 @26382 has 4 MA's), (22, 26355),

Gene: Greenbelt_69 Start: 46762, Stop: 46442, Start Num: 11
Candidate Starts for Greenbelt_69:
(2, 46969), (8, 46846), (Start: 11 @46762 has 1 MA's), (12, 46747), (13, 46744), (14, 46723), (21, 46585), (22, 46576), (26, 46531), (28, 46465), (31, 46456), (32, 46453),

Gene: Gwennie_40 Start: 28348, Stop: 28193, Start Num: 20
Candidate Starts for Gwennie_40:
(4, 28603), (8, 28576), (Start: 10 @28531 has 1 MA's), (19, 28360), (Start: 20 @28348 has 4 MA's),

Gene: Lowa_41 Start: 28340, Stop: 28185, Start Num: 20
Candidate Starts for Lowa_41:
(4, 28595), (8, 28568), (Start: 10 @28523 has 1 MA's), (19, 28352), (Start: 20 @28340 has 4 MA's),

Gene: Montavir_40 Start: 28348, Stop: 28193, Start Num: 20
Candidate Starts for Montavir_40:
(4, 28603), (8, 28576), (Start: 10 @28531 has 1 MA's), (19, 28360), (Start: 20 @28348 has 4 MA's),

Gene: PP_42 Start: 32157, Stop: 31975, Start Num: 18
Candidate Starts for PP_42:
(3, 32478), (8, 32358), (Start: 18 @32157 has 1 MA's), (22, 32097), (27, 32001), (29, 31992),

Gene: Pmask_40 Start: 26376, Stop: 26218, Start Num: 20
Candidate Starts for Pmask_40:
(8, 26610), (Start: 15 @26463 has 2 MA's), (17, 26418), (Start: 20 @26376 has 4 MA's), (22, 26349),

Gene: SuperCallie99_40 Start: 26374, Stop: 26216, Start Num: 20

Candidate Starts for SuperCallie99_40:

(8, 26608), (Start: 15 @26461 has 2 MA's), (17, 26416), (Start: 20 @26374 has 4 MA's), (22, 26347),

Gene: Travvers_40 Start: 27752, Stop: 27597, Start Num: 20

Candidate Starts for Travvers_40:

(7, 27983), (Start: 20 @27752 has 4 MA's),

Gene: Wilkos_73 Start: 50809, Stop: 50432, Start Num: 10

Candidate Starts for Wilkos_73:

(6, 50863), (Start: 10 @50809 has 1 MA's), (12, 50761), (22, 50590), (23, 50560), (24, 50539), (25, 50536),

Gene: Zarafa_36 Start: 27670, Stop: 27482, Start Num: 18

Candidate Starts for Zarafa_36:

(8, 27868), (Start: 18 @27670 has 1 MA's),