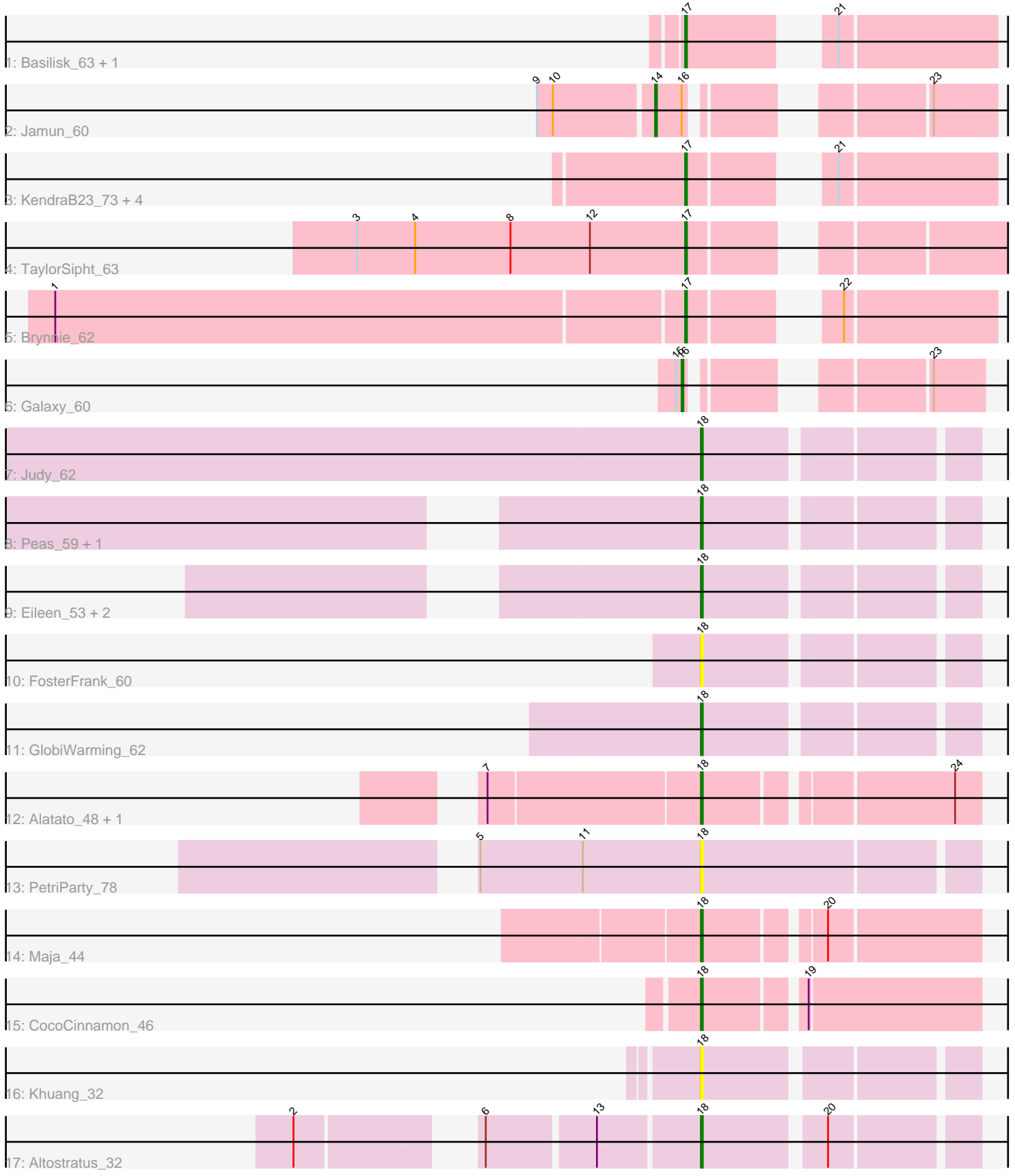


Pham 295015



Note: Tracks are now grouped by subcluster and scaled. Switching in subcluster is indicated by changes in track color. Track scale is now set by default to display the region 30 bp upstream of start 1 to 30 bp downstream of the last possible start. If this default region is judged to be packed too tightly with annotated starts, the track will be further scaled to only show that region of the ORF with annotated starts. This action will be indicated by adding "Zoomed" to the title. For starts, yellow indicates the location of called starts comprised solely of Glimmer/GeneMark auto-annotations, green indicates the location of called starts with at least 1 manual gene annotation.

## Pham 295015 Report

This analysis was run 04/18/26 on database version 643.

Pham number 295015 has 26 members, 9 are drafts.

Phages represented in each track:

- Track 1 : Basilisk\_63, Vulpecula\_62
- Track 2 : Jamun\_60
- Track 3 : KendraB23\_73, Gravel\_73, Toad24\_65, Pelletreau\_73, Eesa\_62
- Track 4 : TaylorSipht\_63
- Track 5 : Brynnie\_62
- Track 6 : Galaxy\_60
- Track 7 : Judy\_62
- Track 8 : Peas\_59, Henrique\_60
- Track 9 : Eileen\_53, Karkharias\_57, HotPotato\_58
- Track 10 : FosterFrank\_60
- Track 11 : GlobiWarming\_62
- Track 12 : Alatato\_48, LeBruni\_67
- Track 13 : PetriParty\_78
- Track 14 : Maja\_44
- Track 15 : CocoCinnamon\_46
- Track 16 : Khuang\_32
- Track 17 : Altostratus\_32

### ***Summary of Final Annotations (See graph section above for start numbers):***

The start number called the most often in the published annotations is 18, it was called in 9 of the 17 non-draft genes in the pham.

Genes that call this "Most Annotated" start:

- Alatato\_48, Altostratus\_32, CocoCinnamon\_46, Eileen\_53, FosterFrank\_60, GlobiWarming\_62, Henrique\_60, HotPotato\_58, Judy\_62, Karkharias\_57, Khuang\_32, LeBruni\_67, Maja\_44, Peas\_59, PetriParty\_78,

Genes that have the "Most Annotated" start but do not call it:

- 

Genes that do not have the "Most Annotated" start:

- Basilisk\_63, Brynnie\_62, Eesa\_62, Galaxy\_60, Gravel\_73, Jamun\_60, KendraB23\_73, Pelletreau\_73, TaylorSipht\_63, Toad24\_65, Vulpecula\_62,

### Summary by start number:

#### Start 14:

- Found in 1 of 26 ( 3.8% ) of genes in pham
- Manual Annotations of this start: 1 of 17
- Called 100.0% of time when present
- Phage (with cluster) where this start called: Jamun\_60 (AS1),

#### Start 16:

- Found in 2 of 26 ( 7.7% ) of genes in pham
- Manual Annotations of this start: 1 of 17
- Called 50.0% of time when present
- Phage (with cluster) where this start called: Galaxy\_60 (AS1),

#### Start 17:

- Found in 9 of 26 ( 34.6% ) of genes in pham
- Manual Annotations of this start: 6 of 17
- Called 100.0% of time when present
- Phage (with cluster) where this start called: Basilisk\_63 (AS1), Brynnie\_62 (AS1), Eesa\_62 (AS1), Gravel\_73 (AS1), KendraB23\_73 (AS1), Pelletreau\_73 (AS1), TaylorSipt\_63 (AS1), Toad24\_65 (AS1), Vulpecula\_62 (AS1),

#### Start 18:

- Found in 15 of 26 ( 57.7% ) of genes in pham
- Manual Annotations of this start: 9 of 17
- Called 100.0% of time when present
- Phage (with cluster) where this start called: Alatato\_48 (FB), Altostratus\_32 (FS), CocoCinnamon\_46 (FO), Eileen\_53 (FA), FosterFrank\_60 (FA), GlobiWarming\_62 (FA), Henrique\_60 (FA), HotPotato\_58 (FA), Judy\_62 (FA), Karkharias\_57 (FA), Khuang\_32 (FS), LeBruni\_67 (AY), Maja\_44 (FO), Peas\_59 (FA), PetriParty\_78 (FJ),

### Summary by clusters:

There are 7 clusters represented in this pham: AS1, FS, FA, FB, AY, FJ, FO,

#### Info for manual annotations of cluster AS1:

- Start number 14 was manually annotated 1 time for cluster AS1.
- Start number 16 was manually annotated 1 time for cluster AS1.
- Start number 17 was manually annotated 6 times for cluster AS1.

#### Info for manual annotations of cluster FA:

- Start number 18 was manually annotated 5 times for cluster FA.

#### Info for manual annotations of cluster FB:

- Start number 18 was manually annotated 1 time for cluster FB.

#### Info for manual annotations of cluster FO:

- Start number 18 was manually annotated 2 times for cluster FO.

#### Info for manual annotations of cluster FS:

- Start number 18 was manually annotated 1 time for cluster FS.

**Gene Information:**

Gene: Alatato\_48 Start: 29479, Stop: 29622, Start Num: 18

Candidate Starts for Alatato\_48:

(7, 29362), (Start: 18 @29479 has 9 MA's), (24, 29608),

Gene: Altostratus\_32 Start: 23255, Stop: 23115, Start Num: 18

Candidate Starts for Altostratus\_32:

(2, 23444), (6, 23366), (13, 23309), (Start: 18 @23255 has 9 MA's), (20, 23192),

Gene: Basilisk\_63 Start: 37425, Stop: 37571, Start Num: 17

Candidate Starts for Basilisk\_63:

(Start: 17 @37425 has 6 MA's), (21, 37485),

Gene: Brynnie\_62 Start: 37628, Stop: 37771, Start Num: 17

Candidate Starts for Brynnie\_62:

(1, 37277), (Start: 17 @37628 has 6 MA's), (22, 37688),

Gene: CocoCinnamon\_46 Start: 31408, Stop: 31554, Start Num: 18

Candidate Starts for CocoCinnamon\_46:

(Start: 18 @31408 has 9 MA's), (19, 31459),

Gene: Eesa\_62 Start: 38648, Stop: 38791, Start Num: 17

Candidate Starts for Eesa\_62:

(Start: 17 @38648 has 6 MA's), (21, 38705),

Gene: Eileen\_53 Start: 34007, Stop: 34147, Start Num: 18

Candidate Starts for Eileen\_53:

(Start: 18 @34007 has 9 MA's),

Gene: FosterFrank\_60 Start: 35927, Stop: 36067, Start Num: 18

Candidate Starts for FosterFrank\_60:

(Start: 18 @35927 has 9 MA's),

Gene: Galaxy\_60 Start: 36232, Stop: 36360, Start Num: 16

Candidate Starts for Galaxy\_60:

(15, 36229), (Start: 16 @36232 has 1 MA's), (23, 36334),

Gene: GlobiWarming\_62 Start: 36338, Stop: 36478, Start Num: 18

Candidate Starts for GlobiWarming\_62:

(Start: 18 @36338 has 9 MA's),

Gene: Gravel\_73 Start: 38904, Stop: 39047, Start Num: 17

Candidate Starts for Gravel\_73:

(Start: 17 @38904 has 6 MA's), (21, 38961),

Gene: Henrique\_60 Start: 35955, Stop: 36095, Start Num: 18

Candidate Starts for Henrique\_60:

(Start: 18 @35955 has 9 MA's),

Gene: HotPotato\_58 Start: 36668, Stop: 36808, Start Num: 18  
Candidate Starts for HotPotato\_58:  
(Start: 18 @36668 has 9 MA's),

Gene: Jamun\_60 Start: 37626, Stop: 37775, Start Num: 14  
Candidate Starts for Jamun\_60:  
(9, 37563), (10, 37572), (Start: 14 @37626 has 1 MA's), (Start: 16 @37641 has 1 MA's), (23, 37743),

Gene: Judy\_62 Start: 37292, Stop: 37432, Start Num: 18  
Candidate Starts for Judy\_62:  
(Start: 18 @37292 has 9 MA's),

Gene: Karkharias\_57 Start: 36158, Stop: 36298, Start Num: 18  
Candidate Starts for Karkharias\_57:  
(Start: 18 @36158 has 9 MA's),

Gene: KendraB23\_73 Start: 38609, Stop: 38752, Start Num: 17  
Candidate Starts for KendraB23\_73:  
(Start: 17 @38609 has 6 MA's), (21, 38666),

Gene: Khuang\_32 Start: 23901, Stop: 23761, Start Num: 18  
Candidate Starts for Khuang\_32:  
(Start: 18 @23901 has 9 MA's),

Gene: LeBruni\_67 Start: 34896, Stop: 35039, Start Num: 18  
Candidate Starts for LeBruni\_67:  
(7, 34779), (Start: 18 @34896 has 9 MA's), (24, 35025),

Gene: Maja\_44 Start: 31812, Stop: 31955, Start Num: 18  
Candidate Starts for Maja\_44:  
(Start: 18 @31812 has 9 MA's), (20, 31872),

Gene: Peas\_59 Start: 37976, Stop: 38116, Start Num: 18  
Candidate Starts for Peas\_59:  
(Start: 18 @37976 has 9 MA's),

Gene: Pelletreau\_73 Start: 38904, Stop: 39047, Start Num: 17  
Candidate Starts for Pelletreau\_73:  
(Start: 17 @38904 has 6 MA's), (21, 38961),

Gene: PetriParty\_78 Start: 42194, Stop: 42343, Start Num: 18  
Candidate Starts for PetriParty\_78:  
(5, 42071), (11, 42128), (Start: 18 @42194 has 9 MA's),

Gene: TaylorSipht\_63 Start: 38119, Stop: 38274, Start Num: 17  
Candidate Starts for TaylorSipht\_63:  
(3, 37933), (4, 37966), (8, 38020), (12, 38065), (Start: 17 @38119 has 6 MA's),

Gene: Toad24\_65 Start: 38661, Stop: 38804, Start Num: 17  
Candidate Starts for Toad24\_65:  
(Start: 17 @38661 has 6 MA's), (21, 38718),

Gene: Vulpecula\_62 Start: 36799, Stop: 36945, Start Num: 17  
Candidate Starts for Vulpecula\_62:  
(Start: 17 @36799 has 6 MA's), (21, 36859),