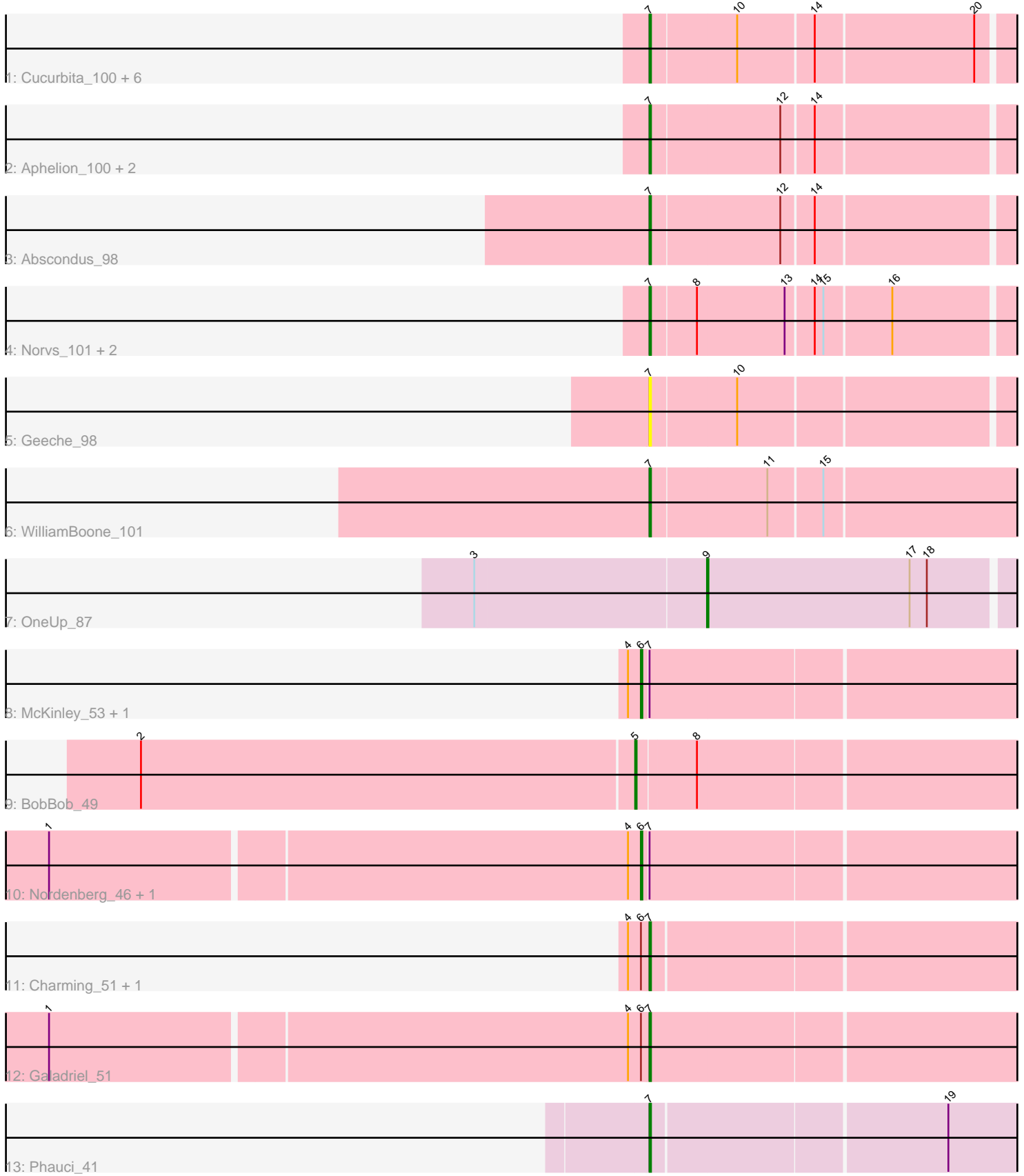


Pham 295018



Note: Tracks are now grouped by subcluster and scaled. Switching in subcluster is indicated by changes in track color. Track scale is now set by default to display the region 30 bp upstream of start 1 to 30 bp downstream of the last possible start. If this default region is judged to be packed too tightly with annotated starts, the track will be further scaled to only show that region of the ORF with annotated starts. This action will be indicated by adding "Zoomed" to the title. For starts, yellow indicates the location of called starts comprised solely of Glimmer/GeneMark auto-annotations, green indicates the location of called starts with at least 1 manual gene annotation.

Pham 295018 Report

This analysis was run 04/18/26 on database version 643.

Pham number 295018 has 26 members, 1 are drafts.

Phages represented in each track:

- Track 1 : Cucurbita_100, Toniann_101, Lozinak_99, Bachita_101, PhinkBoden_98, Smoothie_100, Engineer_100
- Track 2 : Aphelion_100, Miskis_93, Dusty_97
- Track 3 : Abscondus_98
- Track 4 : Norvs_101, Culver_101, ClubL_100
- Track 5 : Geeche_98
- Track 6 : WilliamBoone_101
- Track 7 : OneUp_87
- Track 8 : McKinley_53, Tangent_51
- Track 9 : BobBob_49
- Track 10 : Nordenberg_46, Paries_54
- Track 11 : Charming_51, Rofo_50
- Track 12 : Galadriel_51
- Track 13 : Phauci_41

Summary of Final Annotations (See graph section above for start numbers):

The start number called the most often in the published annotations is 7, it was called in 19 of the 25 non-draft genes in the pham.

Genes that call this "Most Annotated" start:

- Abscondus_98, Aphelion_100, Bachita_101, Charming_51, ClubL_100, Cucurbita_100, Culver_101, Dusty_97, Engineer_100, Galadriel_51, Geeche_98, Lozinak_99, Miskis_93, Norvs_101, Phauci_41, PhinkBoden_98, Rofo_50, Smoothie_100, Toniann_101, WilliamBoone_101,

Genes that have the "Most Annotated" start but do not call it:

- McKinley_53, Nordenberg_46, Paries_54, Tangent_51,

Genes that do not have the "Most Annotated" start:

- BobBob_49, OneUp_87,

Summary by start number:

Start 5:

- Found in 1 of 26 (3.8%) of genes in pham
- Manual Annotations of this start: 1 of 25
- Called 100.0% of time when present
- Phage (with cluster) where this start called: BobBob_49 (DE1),

Start 6:

- Found in 7 of 26 (26.9%) of genes in pham
- Manual Annotations of this start: 4 of 25
- Called 57.1% of time when present
- Phage (with cluster) where this start called: McKinley_53 (DE1), Nordenberg_46 (DE1), Paries_54 (DE1), Tangent_51 (DE1),

Start 7:

- Found in 24 of 26 (92.3%) of genes in pham
- Manual Annotations of this start: 19 of 25
- Called 83.3% of time when present
- Phage (with cluster) where this start called: Abscondus_98 (CQ1), Aphelion_100 (CQ1), Bachita_101 (CQ1), Charming_51 (DE1), ClubL_100 (CQ1), Cucurbita_100 (CQ1), Culver_101 (CQ1), Dusty_97 (CQ1), Engineer_100 (CQ1), Galadriel_51 (DE1), Geeche_98 (CQ1), Lozinak_99 (CQ1), Miskis_93 (CQ1), Norvs_101 (CQ1), Phauci_41 (DE2), PhinkBoden_98 (CQ1), Rofo_50 (DE1), Smoothie_100 (CQ1), Toniann_101 (CQ1), WilliamBoone_101 (CQ1),

Start 9:

- Found in 1 of 26 (3.8%) of genes in pham
- Manual Annotations of this start: 1 of 25
- Called 100.0% of time when present
- Phage (with cluster) where this start called: OneUp_87 (CQ2),

Summary by clusters:

There are 4 clusters represented in this pham: CQ2, CQ1, DE2, DE1,

Info for manual annotations of cluster CQ1:

- Start number 7 was manually annotated 15 times for cluster CQ1.

Info for manual annotations of cluster CQ2:

- Start number 9 was manually annotated 1 time for cluster CQ2.

Info for manual annotations of cluster DE1:

- Start number 5 was manually annotated 1 time for cluster DE1.
- Start number 6 was manually annotated 4 times for cluster DE1.
- Start number 7 was manually annotated 3 times for cluster DE1.

Info for manual annotations of cluster DE2:

- Start number 7 was manually annotated 1 time for cluster DE2.

Gene Information:

Gene: Abscondus_98 Start: 59189, Stop: 59440, Start Num: 7

Candidate Starts for Abscondus_98:
(Start: 7 @59189 has 19 MA's), (12, 59276), (14, 59297),

Gene: Aphelion_100 Start: 60742, Stop: 60993, Start Num: 7
Candidate Starts for Aphelion_100:
(Start: 7 @60742 has 19 MA's), (12, 60829), (14, 60850),

Gene: Bachita_101 Start: 60400, Stop: 60651, Start Num: 7
Candidate Starts for Bachita_101:
(Start: 7 @60400 has 19 MA's), (10, 60457), (14, 60508), (20, 60616),

Gene: BobBob_49 Start: 42241, Stop: 42510, Start Num: 5
Candidate Starts for BobBob_49:
(2, 41902), (Start: 5 @42241 has 1 MA's), (8, 42280),

Gene: Charming_51 Start: 42689, Stop: 42949, Start Num: 7
Candidate Starts for Charming_51:
(4, 42677), (Start: 6 @42686 has 4 MA's), (Start: 7 @42689 has 19 MA's),

Gene: ClubL_100 Start: 59332, Stop: 59583, Start Num: 7
Candidate Starts for ClubL_100:
(Start: 7 @59332 has 19 MA's), (8, 59362), (13, 59422), (14, 59440), (15, 59446), (16, 59491),

Gene: Cucurbita_100 Start: 60907, Stop: 61158, Start Num: 7
Candidate Starts for Cucurbita_100:
(Start: 7 @60907 has 19 MA's), (10, 60964), (14, 61015), (20, 61123),

Gene: Culver_101 Start: 59232, Stop: 59483, Start Num: 7
Candidate Starts for Culver_101:
(Start: 7 @59232 has 19 MA's), (8, 59262), (13, 59322), (14, 59340), (15, 59346), (16, 59391),

Gene: Dusty_97 Start: 59248, Stop: 59499, Start Num: 7
Candidate Starts for Dusty_97:
(Start: 7 @59248 has 19 MA's), (12, 59335), (14, 59356),

Gene: Engineer_100 Start: 60373, Stop: 60624, Start Num: 7
Candidate Starts for Engineer_100:
(Start: 7 @60373 has 19 MA's), (10, 60430), (14, 60481), (20, 60589),

Gene: Galadriel_51 Start: 43146, Stop: 43409, Start Num: 7
Candidate Starts for Galadriel_51:
(1, 42741), (4, 43134), (Start: 6 @43143 has 4 MA's), (Start: 7 @43146 has 19 MA's),

Gene: Geeche_98 Start: 59471, Stop: 59722, Start Num: 7
Candidate Starts for Geeche_98:
(Start: 7 @59471 has 19 MA's), (10, 59528),

Gene: Lozinak_99 Start: 60211, Stop: 60462, Start Num: 7
Candidate Starts for Lozinak_99:
(Start: 7 @60211 has 19 MA's), (10, 60268), (14, 60319), (20, 60427),

Gene: McKinley_53 Start: 43714, Stop: 43980, Start Num: 6
Candidate Starts for McKinley_53:

(4, 43705), (Start: 6 @43714 has 4 MA's), (Start: 7 @43717 has 19 MA's),

Gene: Miskis_93 Start: 58911, Stop: 59162, Start Num: 7

Candidate Starts for Miskis_93:

(Start: 7 @58911 has 19 MA's), (12, 58998), (14, 59019),

Gene: Nordenberg_46 Start: 42499, Stop: 42765, Start Num: 6

Candidate Starts for Nordenberg_46:

(1, 42097), (4, 42490), (Start: 6 @42499 has 4 MA's), (Start: 7 @42502 has 19 MA's),

Gene: Norvs_101 Start: 60240, Stop: 60491, Start Num: 7

Candidate Starts for Norvs_101:

(Start: 7 @60240 has 19 MA's), (8, 60270), (13, 60330), (14, 60348), (15, 60354), (16, 60399),

Gene: OneUp_87 Start: 56617, Stop: 56829, Start Num: 9

Candidate Starts for OneUp_87:

(3, 56458), (Start: 9 @56617 has 1 MA's), (17, 56758), (18, 56770),

Gene: Paries_54 Start: 43970, Stop: 44236, Start Num: 6

Candidate Starts for Paries_54:

(1, 43568), (4, 43961), (Start: 6 @43970 has 4 MA's), (Start: 7 @43973 has 19 MA's),

Gene: Phauci_41 Start: 38587, Stop: 38928, Start Num: 7

Candidate Starts for Phauci_41:

(Start: 7 @38587 has 19 MA's), (19, 38785),

Gene: PhinkBoden_98 Start: 60001, Stop: 60252, Start Num: 7

Candidate Starts for PhinkBoden_98:

(Start: 7 @60001 has 19 MA's), (10, 60058), (14, 60109), (20, 60217),

Gene: Rofo_50 Start: 43078, Stop: 43338, Start Num: 7

Candidate Starts for Rofo_50:

(4, 43066), (Start: 6 @43075 has 4 MA's), (Start: 7 @43078 has 19 MA's),

Gene: Smoothie_100 Start: 60211, Stop: 60462, Start Num: 7

Candidate Starts for Smoothie_100:

(Start: 7 @60211 has 19 MA's), (10, 60268), (14, 60319), (20, 60427),

Gene: Tangent_51 Start: 42698, Stop: 42961, Start Num: 6

Candidate Starts for Tangent_51:

(4, 42689), (Start: 6 @42698 has 4 MA's), (Start: 7 @42701 has 19 MA's),

Gene: Toniann_101 Start: 60180, Stop: 60431, Start Num: 7

Candidate Starts for Toniann_101:

(Start: 7 @60180 has 19 MA's), (10, 60237), (14, 60288), (20, 60396),

Gene: WilliamBoone_101 Start: 58943, Stop: 59200, Start Num: 7

Candidate Starts for WilliamBoone_101:

(Start: 7 @58943 has 19 MA's), (11, 59021), (15, 59057),