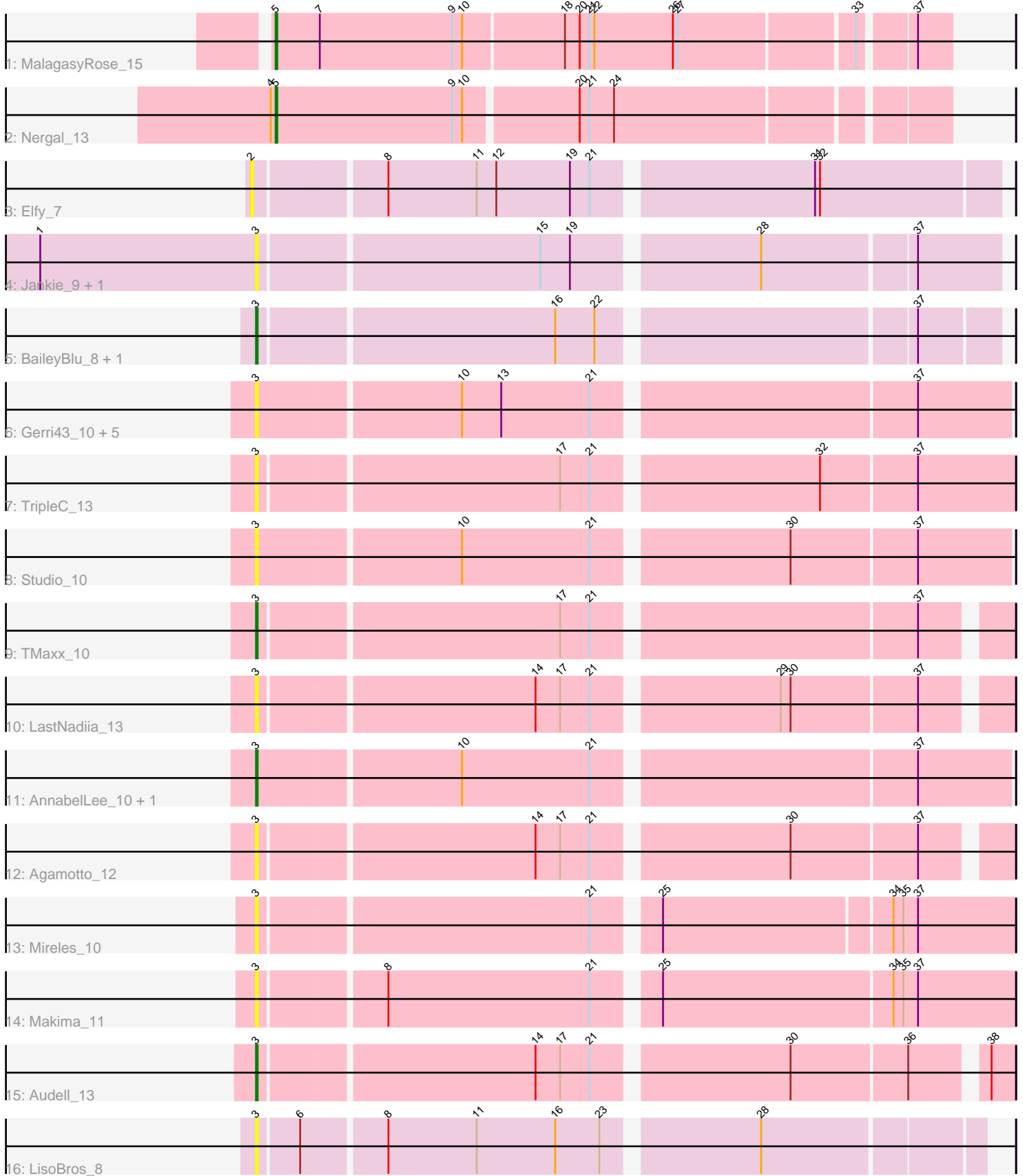


Pham 295037



Note: Tracks are now grouped by subcluster and scaled. Switching in subcluster is indicated by changes in track color. Track scale is now set by default to display the region 30 bp upstream of start 1 to 30 bp downstream of the last possible start. If this default region is judged to be packed too tightly with annotated starts, the track will be further scaled to only show that region of the ORF with annotated starts. This action will be indicated by adding "Zoomed" to the title. For starts, yellow indicates the location of called starts comprised solely of Glimmer/GeneMark auto-annotations, green indicates the location of called starts with at least 1 manual gene annotation.

Pham 295037 Report

This analysis was run 04/18/26 on database version 643.

Pham number 295037 has 24 members, 17 are drafts.

Phages represented in each track:

- Track 1 : MalagasyRose_15
- Track 2 : Nergal_13
- Track 3 : Elfy_7
- Track 4 : Jankie_9, GrimEater_9
- Track 5 : BaileyBlu_8, CallinAllBarbz_8
- Track 6 : Gerri43_10, ChamoyPickle_10, Roberts_10, Neuville_10, CardboardBox_10, ChipsNGuac_10
- Track 7 : TripleC_13
- Track 8 : Studio_10
- Track 9 : TMaxx_10
- Track 10 : LastNadiia_13
- Track 11 : AnnabelLee_10, Ezurina_9
- Track 12 : Agamoto_12
- Track 13 : Mireles_10
- Track 14 : Makima_11
- Track 15 : Audell_13
- Track 16 : LisoBros_8

Summary of Final Annotations (See graph section above for start numbers):

The start number called the most often in the published annotations is 3, it was called in 5 of the 7 non-draft genes in the pham.

Genes that call this "Most Annotated" start:

- Agamoto_12, AnnabelLee_10, Audell_13, BaileyBlu_8, CallinAllBarbz_8, CardboardBox_10, ChamoyPickle_10, ChipsNGuac_10, Ezurina_9, Gerri43_10, GrimEater_9, Jankie_9, LastNadiia_13, LisoBros_8, Makima_11, Mireles_10, Neuville_10, Roberts_10, Studio_10, TMaxx_10, TripleC_13,

Genes that have the "Most Annotated" start but do not call it:

-

Genes that do not have the "Most Annotated" start:

- Elfy_7, MalagasyRose_15, Nergal_13,

Summary by start number:

Start 2:

- Found in 1 of 24 (4.2%) of genes in pham
- No Manual Annotations of this start.
- Called 100.0% of time when present
- Phage (with cluster) where this start called: Elfy_7 (FP),

Start 3:

- Found in 21 of 24 (87.5%) of genes in pham
- Manual Annotations of this start: 5 of 7
- Called 100.0% of time when present
- Phage (with cluster) where this start called: Agamoto_12 (FR), AnnabelLee_10 (FR), Audell_13 (FR), BaileyBlu_8 (FP), CallinAllBarbz_8 (FP), CardboardBox_10 (FR), ChamoyPickle_10 (FR), ChipsNGuac_10 (FR), Ezurina_9 (FR), Gerri43_10 (FR), GrimEater_9 (FP), Jankie_9 (FP), LastNadiia_13 (FR), LisoBros_8 (UNK), Makima_11 (FR), Mireles_10 (FR), Neuville_10 (FR), Roberts_10 (FR), Studio_10 (FR), TMaxx_10 (FR), TripleC_13 (FR),

Start 5:

- Found in 2 of 24 (8.3%) of genes in pham
- Manual Annotations of this start: 2 of 7
- Called 100.0% of time when present
- Phage (with cluster) where this start called: MalagasyRose_15 (AG), Nergal_13 (AG),

Summary by clusters:

There are 4 clusters represented in this pham: FP, FR, UNK, AG,

Info for manual annotations of cluster AG:

- Start number 5 was manually annotated 2 times for cluster AG.

Info for manual annotations of cluster FP:

- Start number 3 was manually annotated 2 times for cluster FP.

Info for manual annotations of cluster FR:

- Start number 3 was manually annotated 3 times for cluster FR.

Gene Information:

Gene: Agamoto_12 Start: 9771, Stop: 10199, Start Num: 3

Candidate Starts for Agamoto_12:

(Start: 3 @9771 has 5 MA's), (14, 9933), (17, 9948), (21, 9966), (30, 10077), (37, 10152),

Gene: AnnabelLee_10 Start: 6689, Stop: 7129, Start Num: 3

Candidate Starts for AnnabelLee_10:

(Start: 3 @6689 has 5 MA's), (10, 6809), (21, 6887), (37, 7073),

Gene: Audell_13 Start: 10041, Stop: 10469, Start Num: 3
Candidate Starts for Audell_13:
(Start: 3 @10041 has 5 MA's), (14, 10203), (17, 10218), (21, 10236), (30, 10347), (36, 10416), (38, 10455),

Gene: BaileyBlu_8 Start: 5760, Stop: 6185, Start Num: 3
Candidate Starts for BaileyBlu_8:
(Start: 3 @5760 has 5 MA's), (16, 5934), (22, 5958), (37, 6138),

Gene: CallinAllBarbz_8 Start: 5770, Stop: 6195, Start Num: 3
Candidate Starts for CallinAllBarbz_8:
(Start: 3 @5770 has 5 MA's), (16, 5944), (22, 5968), (37, 6148),

Gene: CardboardBox_10 Start: 6689, Stop: 7129, Start Num: 3
Candidate Starts for CardboardBox_10:
(Start: 3 @6689 has 5 MA's), (10, 6809), (13, 6833), (21, 6887), (37, 7073),

Gene: ChamoyPickle_10 Start: 6689, Stop: 7129, Start Num: 3
Candidate Starts for ChamoyPickle_10:
(Start: 3 @6689 has 5 MA's), (10, 6809), (13, 6833), (21, 6887), (37, 7073),

Gene: ChipsNGuac_10 Start: 6689, Stop: 7129, Start Num: 3
Candidate Starts for ChipsNGuac_10:
(Start: 3 @6689 has 5 MA's), (10, 6809), (13, 6833), (21, 6887), (37, 7073),

Gene: Elfy_7 Start: 5675, Stop: 6109, Start Num: 2
Candidate Starts for Elfy_7:
(2, 5675), (8, 5750), (11, 5804), (12, 5816), (19, 5861), (21, 5873), (31, 5999), (32, 6002),

Gene: Ezurina_9 Start: 6254, Stop: 6694, Start Num: 3
Candidate Starts for Ezurina_9:
(Start: 3 @6254 has 5 MA's), (10, 6374), (21, 6452), (37, 6638),

Gene: Gerri43_10 Start: 6689, Stop: 7129, Start Num: 3
Candidate Starts for Gerri43_10:
(Start: 3 @6689 has 5 MA's), (10, 6809), (13, 6833), (21, 6887), (37, 7073),

Gene: GrimEater_9 Start: 5769, Stop: 6197, Start Num: 3
Candidate Starts for GrimEater_9:
(1, 5637), (Start: 3 @5769 has 5 MA's), (15, 5934), (19, 5952), (28, 6057), (37, 6147),

Gene: Jankie_9 Start: 5768, Stop: 6196, Start Num: 3
Candidate Starts for Jankie_9:
(1, 5636), (Start: 3 @5768 has 5 MA's), (15, 5933), (19, 5951), (28, 6056), (37, 6146),

Gene: LastNadiia_13 Start: 8993, Stop: 9421, Start Num: 3
Candidate Starts for LastNadiia_13:
(Start: 3 @8993 has 5 MA's), (14, 9155), (17, 9170), (21, 9188), (29, 9293), (30, 9299), (37, 9374),

Gene: LisoBros_8 Start: 6055, Stop: 6471, Start Num: 3
Candidate Starts for LisoBros_8:
(Start: 3 @6055 has 5 MA's), (6, 6079), (8, 6127), (11, 6181), (16, 6229), (23, 6256), (28, 6343),

Gene: Makima_11 Start: 8080, Stop: 8520, Start Num: 3

Candidate Starts for Makima_11:

(Start: 3 @8080 has 5 MA's), (8, 8152), (21, 8275), (25, 8308), (34, 8446), (35, 8452), (37, 8461),

Gene: MalagasyRose_15 Start: 9283, Stop: 9678, Start Num: 5

Candidate Starts for MalagasyRose_15:

(Start: 5 @9283 has 2 MA's), (7, 9310), (9, 9391), (10, 9397), (18, 9457), (20, 9466), (21, 9472), (22, 9475), (26, 9523), (27, 9526), (33, 9628), (37, 9658),

Gene: Mireles_10 Start: 6479, Stop: 6916, Start Num: 3

Candidate Starts for Mireles_10:

(Start: 3 @6479 has 5 MA's), (21, 6674), (25, 6707), (34, 6842), (35, 6848), (37, 6857),

Gene: Nergal_13 Start: 9749, Stop: 10141, Start Num: 5

Candidate Starts for Nergal_13:

(4, 9746), (Start: 5 @9749 has 2 MA's), (9, 9857), (10, 9863), (20, 9929), (21, 9935), (24, 9950),

Gene: Neuville_10 Start: 6689, Stop: 7129, Start Num: 3

Candidate Starts for Neuville_10:

(Start: 3 @6689 has 5 MA's), (10, 6809), (13, 6833), (21, 6887), (37, 7073),

Gene: Roberts_10 Start: 6689, Stop: 7129, Start Num: 3

Candidate Starts for Roberts_10:

(Start: 3 @6689 has 5 MA's), (10, 6809), (13, 6833), (21, 6887), (37, 7073),

Gene: Studio_10 Start: 6445, Stop: 6885, Start Num: 3

Candidate Starts for Studio_10:

(Start: 3 @6445 has 5 MA's), (10, 6565), (21, 6643), (30, 6754), (37, 6829),

Gene: TMaxx_10 Start: 6580, Stop: 7008, Start Num: 3

Candidate Starts for TMaxx_10:

(Start: 3 @6580 has 5 MA's), (17, 6757), (21, 6775), (37, 6961),

Gene: TripleC_13 Start: 10062, Stop: 10502, Start Num: 3

Candidate Starts for TripleC_13:

(Start: 3 @10062 has 5 MA's), (17, 10239), (21, 10257), (32, 10386), (37, 10443),