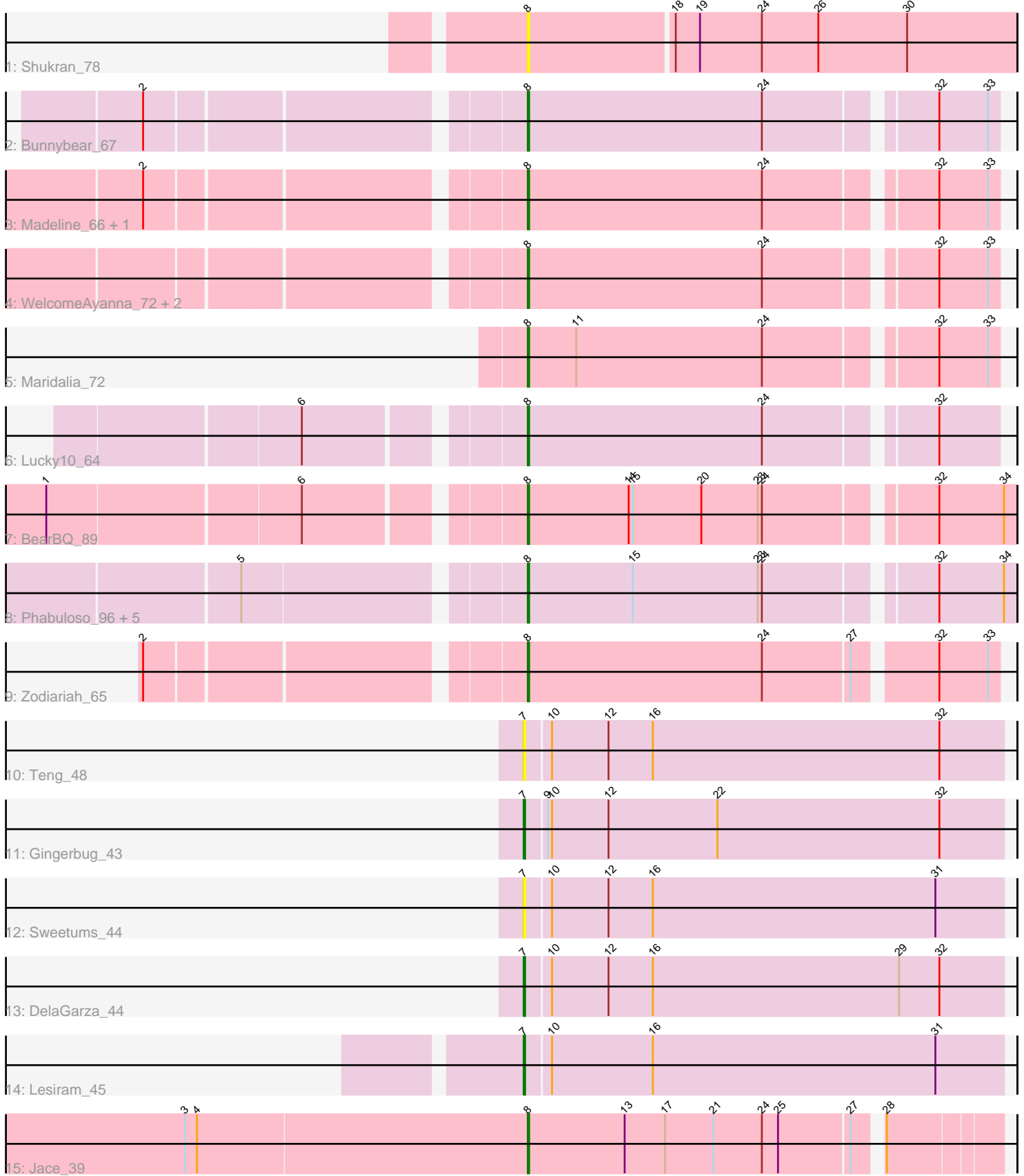


Pham 295059



Note: Tracks are now grouped by subcluster and scaled. Switching in subcluster is indicated by changes in track color. Track scale is now set by default to display the region 30 bp upstream of start 1 to 30 bp downstream of the last possible start. If this default region is judged to be packed too tightly with annotated starts, the track will be further scaled to only show that region of the ORF with annotated starts. This action will be indicated by adding "Zoomed" to the title. For starts, yellow indicates the location of called starts comprised solely of Glimmer/GeneMark auto-annotations, green indicates the location of called starts with at least 1 manual gene annotation.

## Pham 295059 Report

This analysis was run 04/18/26 on database version 643.

Pham number 295059 has 23 members, 4 are drafts.

Phages represented in each track:

- Track 1 : Shukran\_78
- Track 2 : Bunnybear\_67
- Track 3 : Madeline\_66, Madavieve\_68
- Track 4 : WelcomeAyanna\_72, RavenCo17\_68, ThankyouJordi\_72
- Track 5 : Maridalia\_72
- Track 6 : Lucky10\_64
- Track 7 : BearBQ\_89
- Track 8 : Phabuloso\_96, BotCity\_91, Kenna\_84, BENtherdunthat\_89, Lutum\_90, Getalong\_92
- Track 9 : Zodiariah\_65
- Track 10 : Teng\_48
- Track 11 : Gingerbug\_43
- Track 12 : Sweetums\_44
- Track 13 : DelaGarza\_44
- Track 14 : Lesiram\_45
- Track 15 : Jace\_39

### ***Summary of Final Annotations (See graph section above for start numbers):***

The start number called the most often in the published annotations is 8, it was called in 16 of the 19 non-draft genes in the pham.

Genes that call this "Most Annotated" start:

- BENtherdunthat\_89, BearBQ\_89, BotCity\_91, Bunnybear\_67, Getalong\_92, Jace\_39, Kenna\_84, Lucky10\_64, Lutum\_90, Madavieve\_68, Madeline\_66, Maridalia\_72, Phabuloso\_96, RavenCo17\_68, Shukran\_78, ThankyouJordi\_72, WelcomeAyanna\_72, Zodiariah\_65,

Genes that have the "Most Annotated" start but do not call it:

- 

Genes that do not have the "Most Annotated" start:

- DelaGarza\_44, Gingerbug\_43, Lesiram\_45, Sweetums\_44, Teng\_48,

## Summary by start number:

### Start 7:

- Found in 5 of 23 ( 21.7% ) of genes in pham
- Manual Annotations of this start: 3 of 19
- Called 100.0% of time when present
- Phage (with cluster) where this start called: DelaGarza\_44 (GF), Gingerbug\_43 (GF), Lesiram\_45 (GF), Sweetums\_44 (GF), Teng\_48 (GF),

### Start 8:

- Found in 18 of 23 ( 78.3% ) of genes in pham
- Manual Annotations of this start: 16 of 19
- Called 100.0% of time when present
- Phage (with cluster) where this start called: BENtherdunthat\_89 (DN1), BearBQ\_89 (DN), BotCity\_91 (DN), Bunnybear\_67 (CZ), Getalong\_92 (DN1), Jace\_39 (singleton), Kenna\_84 (DN1), Lucky10\_64 (DH), Lutum\_90 (DN1), Madavieve\_68 (CZ1), Madeline\_66 (CZ1), Maridalia\_72 (CZ1), Phabuloso\_96 (DN1), RavenCo17\_68 (CZ8), Shukran\_78 (AY), ThankyouJordi\_72 (CZ1), WelcomeAyanna\_72 (CZ1), Zodiariah\_65 (DW),

## Summary by clusters:

There are 10 clusters represented in this pham: DN, singleton, DH, CZ, CZ1, CZ8, GF, DN1, AY, DW,

### Info for manual annotations of cluster CZ:

- Start number 8 was manually annotated 1 time for cluster CZ.

### Info for manual annotations of cluster CZ1:

- Start number 8 was manually annotated 4 times for cluster CZ1.

### Info for manual annotations of cluster CZ8:

- Start number 8 was manually annotated 1 time for cluster CZ8.

### Info for manual annotations of cluster DH:

- Start number 8 was manually annotated 1 time for cluster DH.

### Info for manual annotations of cluster DN:

- Start number 8 was manually annotated 2 times for cluster DN.

### Info for manual annotations of cluster DN1:

- Start number 8 was manually annotated 5 times for cluster DN1.

### Info for manual annotations of cluster DW:

- Start number 8 was manually annotated 1 time for cluster DW.

### Info for manual annotations of cluster GF:

- Start number 7 was manually annotated 3 times for cluster GF.

## Gene Information:

Gene: BENtherdunthat\_89 Start: 48908, Stop: 49252, Start Num: 8  
Candidate Starts for BENtherdunthat\_89:  
(5, 48719), (Start: 8 @48908 has 16 MA's), (15, 48986), (23, 49079), (24, 49082), (32, 49196), (34, 49244),

Gene: BearBQ\_89 Start: 50470, Stop: 50814, Start Num: 8  
Candidate Starts for BearBQ\_89:  
(1, 50149), (6, 50329), (Start: 8 @50470 has 16 MA's), (14, 50545), (15, 50548), (20, 50599), (23, 50641), (24, 50644), (32, 50758), (34, 50806),

Gene: BotCity\_91 Start: 50437, Stop: 50781, Start Num: 8  
Candidate Starts for BotCity\_91:  
(5, 50248), (Start: 8 @50437 has 16 MA's), (15, 50515), (23, 50608), (24, 50611), (32, 50725), (34, 50773),

Gene: Bunnybear\_67 Start: 47210, Stop: 47542, Start Num: 8  
Candidate Starts for Bunnybear\_67:  
(2, 46955), (Start: 8 @47210 has 16 MA's), (24, 47384), (32, 47498), (33, 47534),

Gene: DelaGarza\_44 Start: 26877, Stop: 26524, Start Num: 7  
Candidate Starts for DelaGarza\_44:  
(Start: 7 @26877 has 3 MA's), (10, 26859), (12, 26817), (16, 26784), (29, 26601), (32, 26571),

Gene: Getalong\_92 Start: 51363, Stop: 51707, Start Num: 8  
Candidate Starts for Getalong\_92:  
(5, 51174), (Start: 8 @51363 has 16 MA's), (15, 51441), (23, 51534), (24, 51537), (32, 51651), (34, 51699),

Gene: Gingerbug\_43 Start: 27395, Stop: 27042, Start Num: 7  
Candidate Starts for Gingerbug\_43:  
(Start: 7 @27395 has 3 MA's), (9, 27380), (10, 27377), (12, 27335), (22, 27254), (32, 27089),

Gene: Jace\_39 Start: 29450, Stop: 29782, Start Num: 8  
Candidate Starts for Jace\_39:  
(3, 29198), (4, 29207), (Start: 8 @29450 has 16 MA's), (13, 29522), (17, 29552), (21, 29588), (24, 29624), (25, 29636), (27, 29687), (28, 29702),

Gene: Kenna\_84 Start: 48181, Stop: 48525, Start Num: 8  
Candidate Starts for Kenna\_84:  
(5, 47992), (Start: 8 @48181 has 16 MA's), (15, 48259), (23, 48352), (24, 48355), (32, 48469), (34, 48517),

Gene: Lesiram\_45 Start: 26848, Stop: 26495, Start Num: 7  
Candidate Starts for Lesiram\_45:  
(Start: 7 @26848 has 3 MA's), (10, 26830), (16, 26755), (31, 26545),

Gene: Lucky10\_64 Start: 40485, Stop: 40817, Start Num: 8  
Candidate Starts for Lucky10\_64:  
(6, 40344), (Start: 8 @40485 has 16 MA's), (24, 40659), (32, 40773),

Gene: Lutum\_90 Start: 49343, Stop: 49687, Start Num: 8  
Candidate Starts for Lutum\_90:

(5, 49154), (Start: 8 @49343 has 16 MA's), (15, 49421), (23, 49514), (24, 49517), (32, 49631), (34, 49679),

Gene: Madavieve\_68 Start: 47342, Stop: 47674, Start Num: 8

Candidate Starts for Madavieve\_68:

(2, 47087), (Start: 8 @47342 has 16 MA's), (24, 47516), (32, 47630), (33, 47666),

Gene: Madeline\_66 Start: 47902, Stop: 48234, Start Num: 8

Candidate Starts for Madeline\_66:

(2, 47647), (Start: 8 @47902 has 16 MA's), (24, 48076), (32, 48190), (33, 48226),

Gene: Maridalia\_72 Start: 47222, Stop: 47554, Start Num: 8

Candidate Starts for Maridalia\_72:

(Start: 8 @47222 has 16 MA's), (11, 47258), (24, 47396), (32, 47510), (33, 47546),

Gene: Phabuloso\_96 Start: 50835, Stop: 51179, Start Num: 8

Candidate Starts for Phabuloso\_96:

(5, 50646), (Start: 8 @50835 has 16 MA's), (15, 50913), (23, 51006), (24, 51009), (32, 51123), (34, 51171),

Gene: RavenCo17\_68 Start: 47032, Stop: 47364, Start Num: 8

Candidate Starts for RavenCo17\_68:

(Start: 8 @47032 has 16 MA's), (24, 47206), (32, 47320), (33, 47356),

Gene: Shukran\_78 Start: 45292, Stop: 45648, Start Num: 8

Candidate Starts for Shukran\_78:

(Start: 8 @45292 has 16 MA's), (18, 45397), (19, 45415), (24, 45460), (26, 45502), (30, 45568),

Gene: Sweetums\_44 Start: 26961, Stop: 26608, Start Num: 7

Candidate Starts for Sweetums\_44:

(Start: 7 @26961 has 3 MA's), (10, 26943), (12, 26901), (16, 26868), (31, 26658),

Gene: Teng\_48 Start: 26868, Stop: 26515, Start Num: 7

Candidate Starts for Teng\_48:

(Start: 7 @26868 has 3 MA's), (10, 26850), (12, 26808), (16, 26775), (32, 26562),

Gene: ThankyouJordi\_72 Start: 49350, Stop: 49682, Start Num: 8

Candidate Starts for ThankyouJordi\_72:

(Start: 8 @49350 has 16 MA's), (24, 49524), (32, 49638), (33, 49674),

Gene: WelcomeAyanna\_72 Start: 49497, Stop: 49829, Start Num: 8

Candidate Starts for WelcomeAyanna\_72:

(Start: 8 @49497 has 16 MA's), (24, 49671), (32, 49785), (33, 49821),

Gene: Zodiariah\_65 Start: 48508, Stop: 48843, Start Num: 8

Candidate Starts for Zodiariah\_65:

(2, 48253), (Start: 8 @48508 has 16 MA's), (24, 48682), (27, 48745), (32, 48799), (33, 48835),