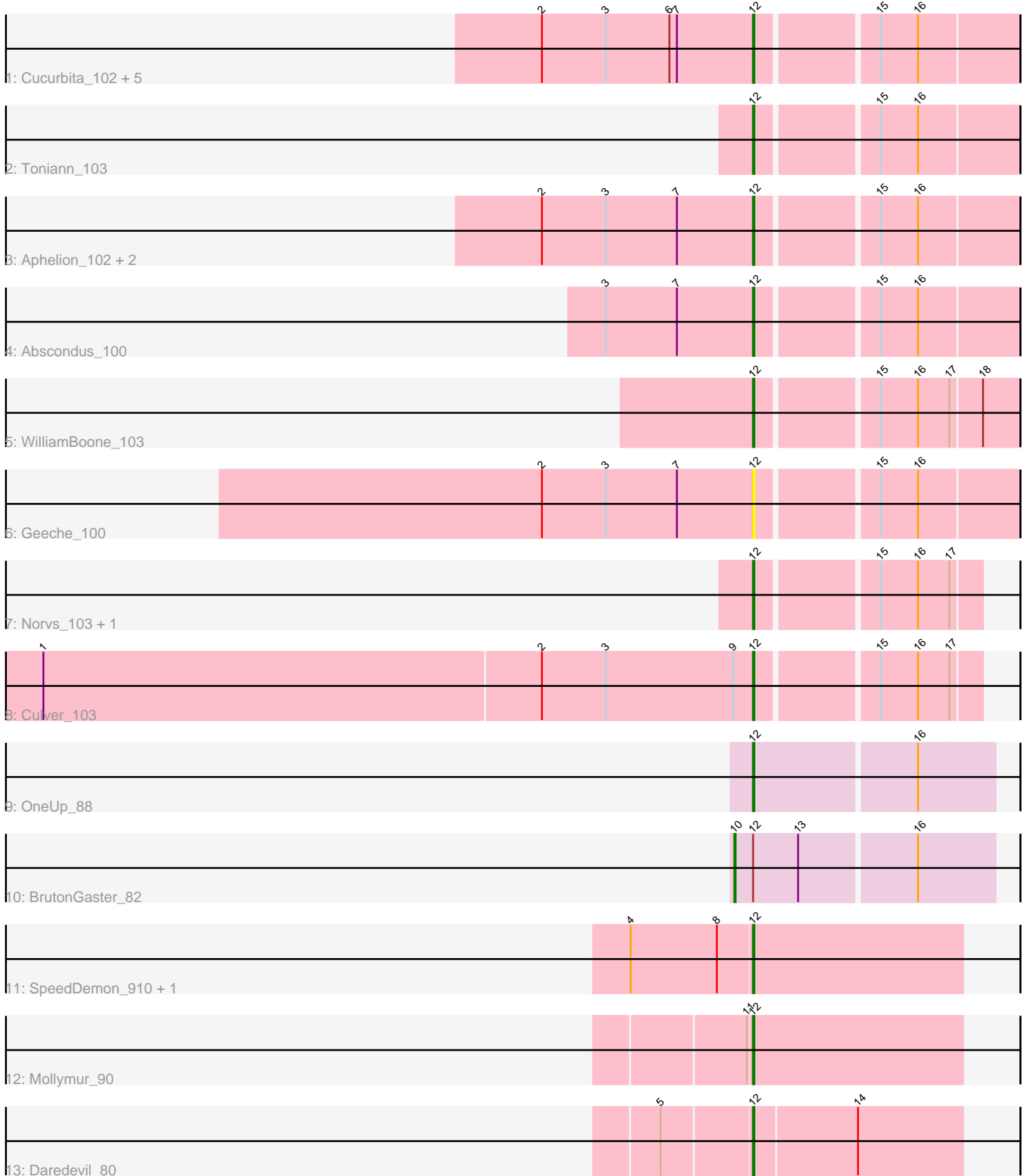


Pham 295084



Note: Tracks are now grouped by subcluster and scaled. Switching in subcluster is indicated by changes in track color. Track scale is now set by default to display the region 30 bp upstream of start 1 to 30 bp downstream of the last possible start. If this default region is judged to be packed too tightly with annotated starts, the track will be further scaled to only show that region of the ORF with annotated starts. This action will be indicated by adding "Zoomed" to the title. For starts, yellow indicates the location of called starts comprised solely of Glimmer/GeneMark auto-annotations, green indicates the location of called starts with at least 1 manual gene annotation.

Pham 295084 Report

This analysis was run 04/18/26 on database version 643.

Pham number 295084 has 22 members, 1 are drafts.

Phages represented in each track:

- Track 1 : Cucurbita_102, Bachita_103, PhinkBoden_100, Smoothie_102, Engineer_102, Lozinak_101
- Track 2 : Toniann_103
- Track 3 : Aphelion_102, Miskis_95, Dusty_99
- Track 4 : Abscondus_100
- Track 5 : WilliamBoone_103
- Track 6 : Geeche_100
- Track 7 : Norvs_103, ClubL_102
- Track 8 : Culver_103
- Track 9 : OneUp_88
- Track 10 : BrutonGaster_82
- Track 11 : SpeedDemon_910, Bantam_90
- Track 12 : Mollymur_90
- Track 13 : Daredevil_80

Summary of Final Annotations (See graph section above for start numbers):

The start number called the most often in the published annotations is 12, it was called in 20 of the 21 non-draft genes in the pham.

Genes that call this "Most Annotated" start:

- Abscondus_100, Aphelion_102, Bachita_103, Bantam_90, ClubL_102, Cucurbita_102, Culver_103, Daredevil_80, Dusty_99, Engineer_102, Geeche_100, Lozinak_101, Miskis_95, Mollymur_90, Norvs_103, OneUp_88, PhinkBoden_100, Smoothie_102, SpeedDemon_910, Toniann_103, WilliamBoone_103,

Genes that have the "Most Annotated" start but do not call it:

- BrutonGaster_82,

Genes that do not have the "Most Annotated" start:

-

Summary by start number:

Start 10:

- Found in 1 of 22 (4.5%) of genes in pham
- Manual Annotations of this start: 1 of 21
- Called 100.0% of time when present
- Phage (with cluster) where this start called: BrutonGaster_82 (CQ2),

Start 12:

- Found in 22 of 22 (100.0%) of genes in pham
- Manual Annotations of this start: 20 of 21
- Called 95.5% of time when present
- Phage (with cluster) where this start called: Abscondus_100 (CQ1), Aphelion_102 (CQ1), Bachita_103 (CQ1), Bantam_90 (DL), ClubL_102 (CQ1), Cucurbita_102 (CQ1), Culver_103 (CQ1), Daredevil_80 (DL), Dusty_99 (CQ1), Engineer_102 (CQ1), Geeche_100 (CQ1), Lozinak_101 (CQ1), Miskis_95 (CQ1), Mollymur_90 (DL), Norvs_103 (CQ1), OneUp_88 (CQ2), PhinkBoden_100 (CQ1), Smoothie_102 (CQ1), SpeedDemon_910 (DL), Toniann_103 (CQ1), WilliamBoone_103 (CQ1),

Summary by clusters:

There are 3 clusters represented in this pham: CQ2, CQ1, DL,

Info for manual annotations of cluster CQ1:

- Start number 12 was manually annotated 15 times for cluster CQ1.

Info for manual annotations of cluster CQ2:

- Start number 10 was manually annotated 1 time for cluster CQ2.
- Start number 12 was manually annotated 1 time for cluster CQ2.

Info for manual annotations of cluster DL:

- Start number 12 was manually annotated 4 times for cluster DL.

Gene Information:

Gene: Abscondus_100 Start: 59662, Stop: 59859, Start Num: 12

Candidate Starts for Abscondus_100:

(3, 59545), (7, 59602), (Start: 12 @59662 has 20 MA's), (15, 59752), (16, 59782),

Gene: Aphelion_102 Start: 61215, Stop: 61412, Start Num: 12

Candidate Starts for Aphelion_102:

(2, 61047), (3, 61098), (7, 61155), (Start: 12 @61215 has 20 MA's), (15, 61305), (16, 61335),

Gene: Bachita_103 Start: 60873, Stop: 61070, Start Num: 12

Candidate Starts for Bachita_103:

(2, 60705), (3, 60756), (6, 60807), (7, 60813), (Start: 12 @60873 has 20 MA's), (15, 60963), (16, 60993),

Gene: Bantam_90 Start: 61545, Stop: 61378, Start Num: 12

Candidate Starts for Bantam_90:

(4, 61641), (8, 61572), (Start: 12 @61545 has 20 MA's),

Gene: BrutonGaster_82 Start: 54964, Stop: 55164, Start Num: 10

Candidate Starts for BrutonGaster_82:

(Start: 10 @54964 has 1 MA's), (Start: 12 @54979 has 20 MA's), (13, 55015), (16, 55105),

Gene: ClubL_102 Start: 59803, Stop: 59970, Start Num: 12

Candidate Starts for ClubL_102:

(Start: 12 @59803 has 20 MA's), (15, 59893), (16, 59923), (17, 59947),

Gene: Cucurbita_102 Start: 61380, Stop: 61577, Start Num: 12

Candidate Starts for Cucurbita_102:

(2, 61212), (3, 61263), (6, 61314), (7, 61320), (Start: 12 @61380 has 20 MA's), (15, 61470), (16, 61500),

Gene: Culver_103 Start: 59702, Stop: 59869, Start Num: 12

Candidate Starts for Culver_103:

(1, 59138), (2, 59534), (3, 59585), (9, 59687), (Start: 12 @59702 has 20 MA's), (15, 59792), (16, 59822), (17, 59846),

Gene: Daredevil_80 Start: 57192, Stop: 57028, Start Num: 12

Candidate Starts for Daredevil_80:

(5, 57261), (Start: 12 @57192 has 20 MA's), (14, 57111),

Gene: Dusty_99 Start: 59721, Stop: 59918, Start Num: 12

Candidate Starts for Dusty_99:

(2, 59553), (3, 59604), (7, 59661), (Start: 12 @59721 has 20 MA's), (15, 59811), (16, 59841),

Gene: Engineer_102 Start: 60846, Stop: 61043, Start Num: 12

Candidate Starts for Engineer_102:

(2, 60678), (3, 60729), (6, 60780), (7, 60786), (Start: 12 @60846 has 20 MA's), (15, 60936), (16, 60966),

Gene: Geeche_100 Start: 59944, Stop: 60141, Start Num: 12

Candidate Starts for Geeche_100:

(2, 59776), (3, 59827), (7, 59884), (Start: 12 @59944 has 20 MA's), (15, 60034), (16, 60064),

Gene: Lozinak_101 Start: 60684, Stop: 60881, Start Num: 12

Candidate Starts for Lozinak_101:

(2, 60516), (3, 60567), (6, 60618), (7, 60624), (Start: 12 @60684 has 20 MA's), (15, 60774), (16, 60804),

Gene: Miskis_95 Start: 59384, Stop: 59581, Start Num: 12

Candidate Starts for Miskis_95:

(2, 59216), (3, 59267), (7, 59324), (Start: 12 @59384 has 20 MA's), (15, 59474), (16, 59504),

Gene: Mollymur_90 Start: 62338, Stop: 62171, Start Num: 12

Candidate Starts for Mollymur_90:

(11, 62341), (Start: 12 @62338 has 20 MA's),

Gene: Norvs_103 Start: 60711, Stop: 60878, Start Num: 12

Candidate Starts for Norvs_103:

(Start: 12 @60711 has 20 MA's), (15, 60801), (16, 60831), (17, 60855),

Gene: OneUp_88 Start: 56848, Stop: 57033, Start Num: 12

Candidate Starts for OneUp_88:

(Start: 12 @56848 has 20 MA's), (16, 56974),

Gene: PhinkBoden_100 Start: 60474, Stop: 60671, Start Num: 12

Candidate Starts for PhinkBoden_100:

(2, 60306), (3, 60357), (6, 60408), (7, 60414), (Start: 12 @60474 has 20 MA's), (15, 60564), (16, 60594),

Gene: Smoothie_102 Start: 60684, Stop: 60881, Start Num: 12

Candidate Starts for Smoothie_102:

(2, 60516), (3, 60567), (6, 60618), (7, 60624), (Start: 12 @60684 has 20 MA's), (15, 60774), (16, 60804),

Gene: SpeedDemon_910 Start: 63466, Stop: 63299, Start Num: 12

Candidate Starts for SpeedDemon_910:

(4, 63562), (8, 63493), (Start: 12 @63466 has 20 MA's),

Gene: Toniann_103 Start: 60654, Stop: 60851, Start Num: 12

Candidate Starts for Toniann_103:

(Start: 12 @60654 has 20 MA's), (15, 60744), (16, 60774),

Gene: WilliamBoone_103 Start: 59422, Stop: 59619, Start Num: 12

Candidate Starts for WilliamBoone_103:

(Start: 12 @59422 has 20 MA's), (15, 59512), (16, 59542), (17, 59566), (18, 59590),