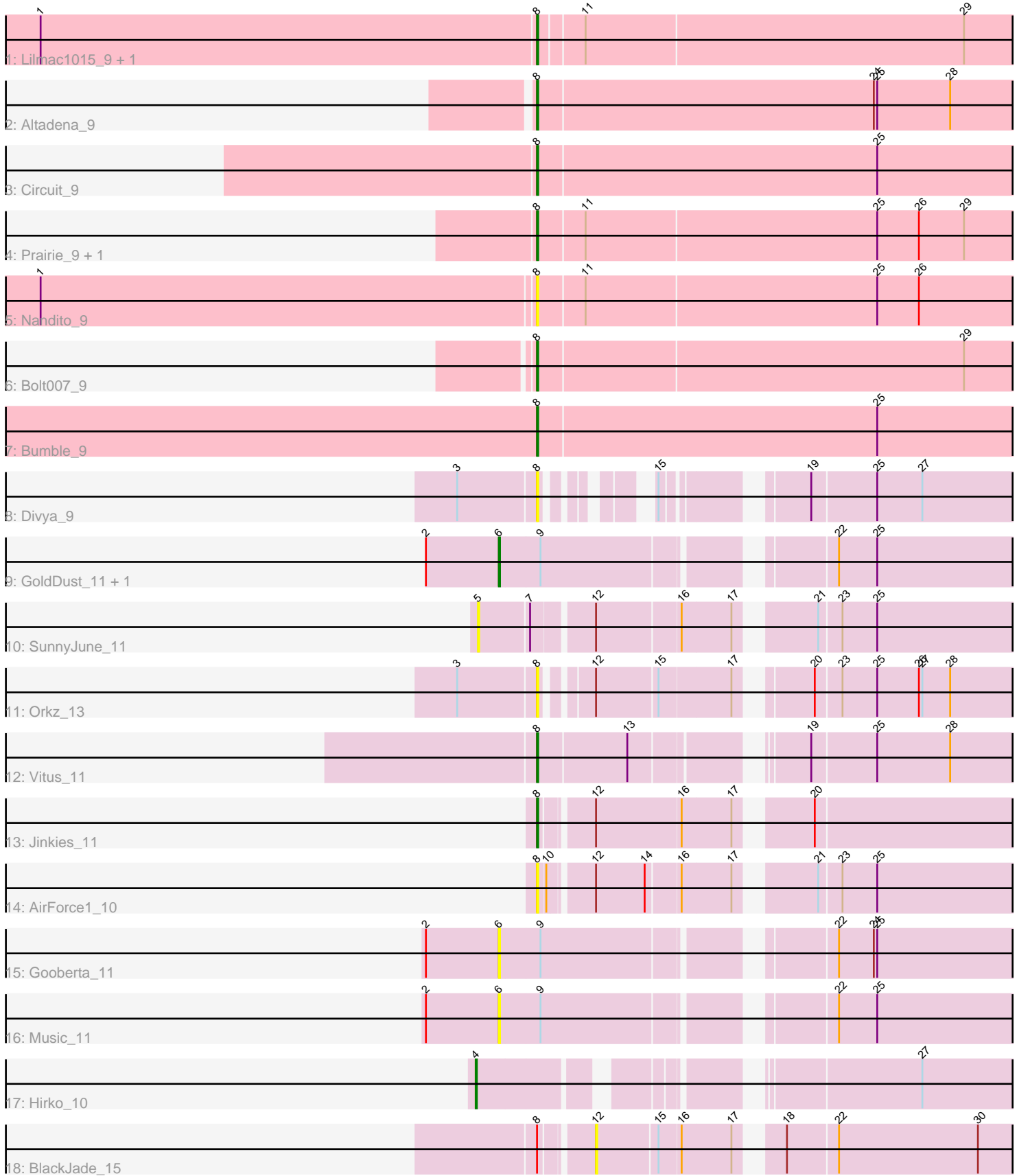


Pham 295092



Note: Tracks are now grouped by subcluster and scaled. Switching in subcluster is indicated by changes in track color. Track scale is now set by default to display the region 30 bp upstream of start 1 to 30 bp downstream of the last possible start. If this default region is judged to be packed too tightly with annotated starts, the track will be further scaled to only show that region of the ORF with annotated starts. This action will be indicated by adding "Zoomed" to the title. For starts, yellow indicates the location of called starts comprised solely of Glimmer/GeneMark auto-annotations, green indicates the location of called starts with at least 1 manual gene annotation.

## Pham 295092 Report

This analysis was run 04/18/26 on database version 643.

Pham number 295092 has 21 members, 9 are drafts.

Phages represented in each track:

- Track 1 : Lilmac1015\_9, CalWood4100\_9
- Track 2 : Altadena\_9
- Track 3 : Circuit\_9
- Track 4 : Prairie\_9, Klevey\_9
- Track 5 : Nandito\_9
- Track 6 : Bolt007\_9
- Track 7 : Bumble\_9
- Track 8 : Divya\_9
- Track 9 : GoldDust\_11, Vibaki\_11
- Track 10 : SunnyJune\_11
- Track 11 : Orkz\_13
- Track 12 : Vitus\_11
- Track 13 : Jinkies\_11
- Track 14 : AirForce1\_10
- Track 15 : Gooberta\_11
- Track 16 : Music\_11
- Track 17 : Hirko\_10
- Track 18 : BlackJade\_15

### ***Summary of Final Annotations (See graph section above for start numbers):***

The start number called the most often in the published annotations is 8, it was called in 9 of the 12 non-draft genes in the pham.

Genes that call this "Most Annotated" start:

- AirForce1\_10, Altadena\_9, Bolt007\_9, Bumble\_9, CalWood4100\_9, Circuit\_9, Divya\_9, Jinkies\_11, Klevey\_9, Lilmac1015\_9, Nandito\_9, Orkz\_13, Prairie\_9, Vitus\_11,

Genes that have the "Most Annotated" start but do not call it:

- BlackJade\_15,

Genes that do not have the "Most Annotated" start:

- GoldDust\_11, Gooberta\_11, Hirko\_10, Music\_11, SunnyJune\_11, Vibaki\_11,

### **Summary by start number:**

#### Start 4:

- Found in 1 of 21 ( 4.8% ) of genes in pham
- Manual Annotations of this start: 1 of 12
- Called 100.0% of time when present
- Phage (with cluster) where this start called: Hirko\_10 (FL),

#### Start 5:

- Found in 1 of 21 ( 4.8% ) of genes in pham
- No Manual Annotations of this start.
- Called 100.0% of time when present
- Phage (with cluster) where this start called: SunnyJune\_11 (FL),

#### Start 6:

- Found in 4 of 21 ( 19.0% ) of genes in pham
- Manual Annotations of this start: 2 of 12
- Called 100.0% of time when present
- Phage (with cluster) where this start called: GoldDust\_11 (FL), Gooberta\_11 (FL), Music\_11 (FL), Vibaki\_11 (FL),

#### Start 8:

- Found in 15 of 21 ( 71.4% ) of genes in pham
- Manual Annotations of this start: 9 of 12
- Called 93.3% of time when present
- Phage (with cluster) where this start called: AirForce1\_10 (FL), Altadena\_9 (FH), Bolt007\_9 (FH), Bumble\_9 (FH), CalWood4100\_9 (FH), Circuit\_9 (FH), Divya\_9 (FL), Jinkies\_11 (FL), Klevey\_9 (FH), Lilmac1015\_9 (FH), Nandito\_9 (FH), Orkz\_13 (FL), Prairie\_9 (FH), Vitus\_11 (FL),

#### Start 12:

- Found in 5 of 21 ( 23.8% ) of genes in pham
- No Manual Annotations of this start.
- Called 20.0% of time when present
- Phage (with cluster) where this start called: BlackJade\_15 (FL),

### **Summary by clusters:**

There are 2 clusters represented in this pham: FH, FL,

Info for manual annotations of cluster FH:

- Start number 8 was manually annotated 7 times for cluster FH.

Info for manual annotations of cluster FL:

- Start number 4 was manually annotated 1 time for cluster FL.
- Start number 6 was manually annotated 2 times for cluster FL.
- Start number 8 was manually annotated 2 times for cluster FL.

### **Gene Information:**

Gene: AirForce1\_10 Start: 7934, Stop: 8320, Start Num: 8

Candidate Starts for AirForce1\_10:

(Start: 8 @7934 has 9 MA's), (10, 7940), (12, 7973), (14, 8015), (16, 8042), (17, 8084), (21, 8138), (23, 8156), (25, 8186),

Gene: Altadena\_9 Start: 8045, Stop: 8473, Start Num: 8

Candidate Starts for Altadena\_9:

(Start: 8 @8045 has 9 MA's), (24, 8333), (25, 8336), (28, 8399),

Gene: BlackJade\_15 Start: 10304, Stop: 10651, Start Num: 12

Candidate Starts for BlackJade\_15:

(Start: 8 @10265 has 9 MA's), (12, 10304), (15, 10355), (16, 10373), (17, 10415), (18, 10442), (22, 10484), (30, 10604),

Gene: Bolt007\_9 Start: 7996, Stop: 8418, Start Num: 8

Candidate Starts for Bolt007\_9:

(Start: 8 @7996 has 9 MA's), (29, 8359),

Gene: Bumble\_9 Start: 8062, Stop: 8487, Start Num: 8

Candidate Starts for Bumble\_9:

(Start: 8 @8062 has 9 MA's), (25, 8353),

Gene: CalWood4100\_9 Start: 7982, Stop: 8401, Start Num: 8

Candidate Starts for CalWood4100\_9:

(1, 7556), (Start: 8 @7982 has 9 MA's), (11, 8018), (29, 8342),

Gene: Circuit\_9 Start: 8048, Stop: 8473, Start Num: 8

Candidate Starts for Circuit\_9:

(Start: 8 @8048 has 9 MA's), (25, 8339),

Gene: Divya\_9 Start: 7596, Stop: 7934, Start Num: 8

Candidate Starts for Divya\_9:

(3, 7530), (Start: 8 @7596 has 9 MA's), (15, 7650), (19, 7746), (25, 7800), (27, 7839),

Gene: GoldDust\_11 Start: 10176, Stop: 10595, Start Num: 6

Candidate Starts for GoldDust\_11:

(2, 10113), (Start: 6 @10176 has 2 MA's), (9, 10209), (22, 10428), (25, 10461),

Gene: Gooberta\_11 Start: 10176, Stop: 10595, Start Num: 6

Candidate Starts for Gooberta\_11:

(2, 10113), (Start: 6 @10176 has 2 MA's), (9, 10209), (22, 10428), (24, 10458), (25, 10461),

Gene: Hirko\_10 Start: 9608, Stop: 10018, Start Num: 4

Candidate Starts for Hirko\_10:

(Start: 4 @9608 has 1 MA's), (27, 9923),

Gene: Jinkies\_11 Start: 8933, Stop: 9322, Start Num: 8

Candidate Starts for Jinkies\_11:

(Start: 8 @8933 has 9 MA's), (12, 8972), (16, 9044), (17, 9086), (20, 9137),

Gene: Klevey\_9 Start: 7989, Stop: 8411, Start Num: 8

Candidate Starts for Klevey\_9:

(Start: 8 @7989 has 9 MA's), (11, 8028), (25, 8277), (26, 8313), (29, 8352),

Gene: Lilmac1015\_9 Start: 7982, Stop: 8401, Start Num: 8

Candidate Starts for Lilmac1015\_9:

(1, 7556), (Start: 8 @7982 has 9 MA's), (11, 8018), (29, 8342),

Gene: Music\_11 Start: 10046, Stop: 10465, Start Num: 6

Candidate Starts for Music\_11:

(2, 9983), (Start: 6 @10046 has 2 MA's), (9, 10079), (22, 10298), (25, 10331),

Gene: Nandito\_9 Start: 8001, Stop: 8423, Start Num: 8

Candidate Starts for Nandito\_9:

(1, 7578), (Start: 8 @8001 has 9 MA's), (11, 8040), (25, 8289), (26, 8325),

Gene: Orkz\_13 Start: 8699, Stop: 9076, Start Num: 8

Candidate Starts for Orkz\_13:

(3, 8633), (Start: 8 @8699 has 9 MA's), (12, 8732), (15, 8783), (17, 8843), (20, 8891), (23, 8912), (25, 8942), (26, 8978), (27, 8981), (28, 9005),

Gene: Prairie\_9 Start: 7989, Stop: 8411, Start Num: 8

Candidate Starts for Prairie\_9:

(Start: 8 @7989 has 9 MA's), (11, 8028), (25, 8277), (26, 8313), (29, 8352),

Gene: SunnyJune\_11 Start: 9266, Stop: 9703, Start Num: 5

Candidate Starts for SunnyJune\_11:

(5, 9266), (7, 9308), (12, 9356), (16, 9425), (17, 9467), (21, 9521), (23, 9539), (25, 9569),

Gene: Vibaki\_11 Start: 10082, Stop: 10474, Start Num: 6

Candidate Starts for Vibaki\_11:

(2, 10019), (Start: 6 @10082 has 2 MA's), (9, 10115), (22, 10307), (25, 10340),

Gene: Vitus\_11 Start: 9895, Stop: 10281, Start Num: 8

Candidate Starts for Vitus\_11:

(Start: 8 @9895 has 9 MA's), (13, 9970), (19, 10093), (25, 10147), (28, 10210),