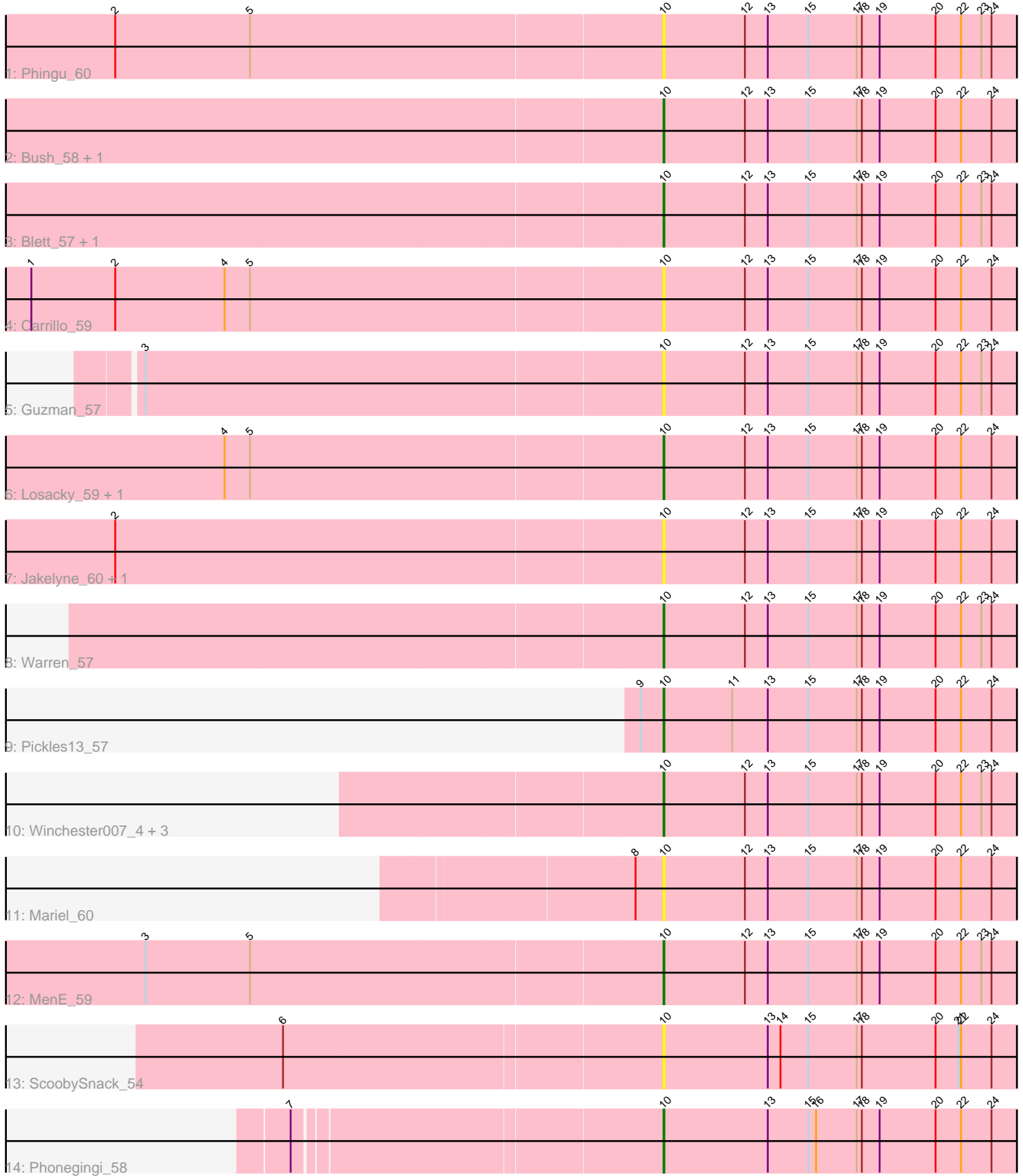


Pham 295095



Note: Tracks are now grouped by subcluster and scaled. Switching in subcluster is indicated by changes in track color. Track scale is now set by default to display the region 30 bp upstream of start 1 to 30 bp downstream of the last possible start. If this default region is judged to be packed too tightly with annotated starts, the track will be further scaled to only show that region of the ORF with annotated starts. This action will be indicated by adding "Zoomed" to the title. For starts, yellow indicates the location of called starts comprised solely of Glimmer/GeneMark auto-annotations, green indicates the location of called starts with at least 1 manual gene annotation.

Pham 295095 Report

This analysis was run 04/18/26 on database version 643.

Pham number 295095 has 21 members, 10 are drafts.

Phages represented in each track:

- Track 1 : Phingu_60
- Track 2 : Bush_58, CookieDog_57
- Track 3 : Blett_57, NCRodriguez_59
- Track 4 : Carrillo_59
- Track 5 : Guzman_57
- Track 6 : Losacky_59, Antuna_59
- Track 7 : Jakelyne_60, Violeta_59
- Track 8 : Warren_57
- Track 9 : Pickles13_57
- Track 10 : Winchester007_4, PhillyJawn_58, Appa_57, Dropshot_57
- Track 11 : Mariel_60
- Track 12 : MenE_59
- Track 13 : ScoobySnack_54
- Track 14 : Phonegingi_58

Summary of Final Annotations (See graph section above for start numbers):

The start number called the most often in the published annotations is 10, it was called in 11 of the 11 non-draft genes in the pham.

Genes that call this "Most Annotated" start:

- Antuna_59, Appa_57, Blett_57, Bush_58, Carrillo_59, CookieDog_57, Dropshot_57, Guzman_57, Jakelyne_60, Losacky_59, Mariel_60, MenE_59, NCRodriguez_59, PhillyJawn_58, Phingu_60, Phonegingi_58, Pickles13_57, ScoobySnack_54, Violeta_59, Warren_57, Winchester007_4,

Genes that have the "Most Annotated" start but do not call it:

-

Genes that do not have the "Most Annotated" start:

-

Summary by start number:

Start 10:

- Found in 21 of 21 (100.0%) of genes in pham
- Manual Annotations of this start: 11 of 11
- Called 100.0% of time when present
- Phage (with cluster) where this start called: Antuna_59 (GA), Appa_57 (GA), Blett_57 (GA), Bush_58 (GA), Carrillo_59 (GA), CookieDog_57 (GA), Dropshot_57 (GA), Guzman_57 (GA), Jakelyne_60 (GA), Losacky_59 (GA), Mariel_60 (GA), MenE_59 (GA), NCRodriguez_59 (GA), PhillyJawn_58 (GA), Phingu_60 (GA), Phonegingi_58 (GA), Pickles13_57 (GA), ScoobySnack_54 (GA), Violeta_59 (GA), Warren_57 (GA), Winchester007_4 (GA),

Summary by clusters:

There is one cluster represented in this pham: GA

Info for manual annotations of cluster GA:

- Start number 10 was manually annotated 11 times for cluster GA.

Gene Information:

Gene: Antuna_59 Start: 34183, Stop: 34620, Start Num: 10

Candidate Starts for Antuna_59:

(4, 33676), (5, 33706), (Start: 10 @34183 has 11 MA's), (12, 34279), (13, 34306), (15, 34354), (17, 34411), (18, 34417), (19, 34438), (20, 34504), (22, 34534), (24, 34570),

Gene: Appa_57 Start: 33948, Stop: 34385, Start Num: 10

Candidate Starts for Appa_57:

(Start: 10 @33948 has 11 MA's), (12, 34044), (13, 34071), (15, 34119), (17, 34176), (18, 34182), (19, 34203), (20, 34269), (22, 34299), (23, 34323), (24, 34335),

Gene: Blett_57 Start: 34133, Stop: 34570, Start Num: 10

Candidate Starts for Blett_57:

(Start: 10 @34133 has 11 MA's), (12, 34229), (13, 34256), (15, 34304), (17, 34361), (18, 34367), (19, 34388), (20, 34454), (22, 34484), (23, 34508), (24, 34520),

Gene: Bush_58 Start: 34082, Stop: 34519, Start Num: 10

Candidate Starts for Bush_58:

(Start: 10 @34082 has 11 MA's), (12, 34178), (13, 34205), (15, 34253), (17, 34310), (18, 34316), (19, 34337), (20, 34403), (22, 34433), (24, 34469),

Gene: Carrillo_59 Start: 34056, Stop: 34493, Start Num: 10

Candidate Starts for Carrillo_59:

(1, 33321), (2, 33420), (4, 33549), (5, 33579), (Start: 10 @34056 has 11 MA's), (12, 34152), (13, 34179), (15, 34227), (17, 34284), (18, 34290), (19, 34311), (20, 34377), (22, 34407), (24, 34443),

Gene: CookieDog_57 Start: 34056, Stop: 34493, Start Num: 10

Candidate Starts for CookieDog_57:

(Start: 10 @34056 has 11 MA's), (12, 34152), (13, 34179), (15, 34227), (17, 34284), (18, 34290), (19, 34311), (20, 34377), (22, 34407), (24, 34443),

Gene: Dropshot_57 Start: 33783, Stop: 34220, Start Num: 10

Candidate Starts for Dropshot_57:

(Start: 10 @33783 has 11 MA's), (12, 33879), (13, 33906), (15, 33954), (17, 34011), (18, 34017), (19, 34038), (20, 34104), (22, 34134), (23, 34158), (24, 34170),

Gene: Guzman_57 Start: 34003, Stop: 34440, Start Num: 10

Candidate Starts for Guzman_57:

(3, 33403), (Start: 10 @34003 has 11 MA's), (12, 34099), (13, 34126), (15, 34174), (17, 34231), (18, 34237), (19, 34258), (20, 34324), (22, 34354), (23, 34378), (24, 34390),

Gene: Jakelyne_60 Start: 34149, Stop: 34586, Start Num: 10

Candidate Starts for Jakelyne_60:

(2, 33513), (Start: 10 @34149 has 11 MA's), (12, 34245), (13, 34272), (15, 34320), (17, 34377), (18, 34383), (19, 34404), (20, 34470), (22, 34500), (24, 34536),

Gene: Losacky_59 Start: 34314, Stop: 34751, Start Num: 10

Candidate Starts for Losacky_59:

(4, 33807), (5, 33837), (Start: 10 @34314 has 11 MA's), (12, 34410), (13, 34437), (15, 34485), (17, 34542), (18, 34548), (19, 34569), (20, 34635), (22, 34665), (24, 34701),

Gene: Mariel_60 Start: 34532, Stop: 34969, Start Num: 10

Candidate Starts for Mariel_60:

(8, 34499), (Start: 10 @34532 has 11 MA's), (12, 34628), (13, 34655), (15, 34703), (17, 34760), (18, 34766), (19, 34787), (20, 34853), (22, 34883), (24, 34919),

Gene: MenE_59 Start: 34205, Stop: 34642, Start Num: 10

Candidate Starts for MenE_59:

(3, 33605), (5, 33728), (Start: 10 @34205 has 11 MA's), (12, 34301), (13, 34328), (15, 34376), (17, 34433), (18, 34439), (19, 34460), (20, 34526), (22, 34556), (23, 34580), (24, 34592),

Gene: NCRodriguez_59 Start: 34274, Stop: 34711, Start Num: 10

Candidate Starts for NCRodriguez_59:

(Start: 10 @34274 has 11 MA's), (12, 34370), (13, 34397), (15, 34445), (17, 34502), (18, 34508), (19, 34529), (20, 34595), (22, 34625), (23, 34649), (24, 34661),

Gene: PhillyJawn_58 Start: 33945, Stop: 34382, Start Num: 10

Candidate Starts for PhillyJawn_58:

(Start: 10 @33945 has 11 MA's), (12, 34041), (13, 34068), (15, 34116), (17, 34173), (18, 34179), (19, 34200), (20, 34266), (22, 34296), (23, 34320), (24, 34332),

Gene: Phingu_60 Start: 34169, Stop: 34606, Start Num: 10

Candidate Starts for Phingu_60:

(2, 33533), (5, 33692), (Start: 10 @34169 has 11 MA's), (12, 34265), (13, 34292), (15, 34340), (17, 34397), (18, 34403), (19, 34424), (20, 34490), (22, 34520), (23, 34544), (24, 34556),

Gene: Phonegingi_58 Start: 34265, Stop: 34702, Start Num: 10

Candidate Starts for Phonegingi_58:

(7, 33854), (Start: 10 @34265 has 11 MA's), (13, 34388), (15, 34436), (16, 34445), (17, 34493), (18, 34499), (19, 34520), (20, 34586), (22, 34616), (24, 34652),

Gene: Pickles13_57 Start: 34624, Stop: 35061, Start Num: 10

Candidate Starts for Pickles13_57:

(9, 34597), (Start: 10 @34624 has 11 MA's), (11, 34705), (13, 34747), (15, 34795), (17, 34852), (18, 34858), (19, 34879), (20, 34945), (22, 34975), (24, 35011),

Gene: ScoobySnack_54 Start: 33919, Stop: 34356, Start Num: 10

Candidate Starts for ScoobySnack_54:

(6, 33487), (Start: 10 @33919 has 11 MA's), (13, 34042), (14, 34057), (15, 34090), (17, 34147), (18, 34153), (20, 34240), (21, 34267), (22, 34270), (24, 34306),

Gene: Violeta_59 Start: 34047, Stop: 34484, Start Num: 10

Candidate Starts for Violeta_59:

(2, 33411), (Start: 10 @34047 has 11 MA's), (12, 34143), (13, 34170), (15, 34218), (17, 34275), (18, 34281), (19, 34302), (20, 34368), (22, 34398), (24, 34434),

Gene: Warren_57 Start: 34005, Stop: 34442, Start Num: 10

Candidate Starts for Warren_57:

(Start: 10 @34005 has 11 MA's), (12, 34101), (13, 34128), (15, 34176), (17, 34233), (18, 34239), (19, 34260), (20, 34326), (22, 34356), (23, 34380), (24, 34392),

Gene: Winchester007_4 Start: 1219, Stop: 1656, Start Num: 10

Candidate Starts for Winchester007_4:

(Start: 10 @1219 has 11 MA's), (12, 1315), (13, 1342), (15, 1390), (17, 1447), (18, 1453), (19, 1474), (20, 1540), (22, 1570), (23, 1594), (24, 1606),