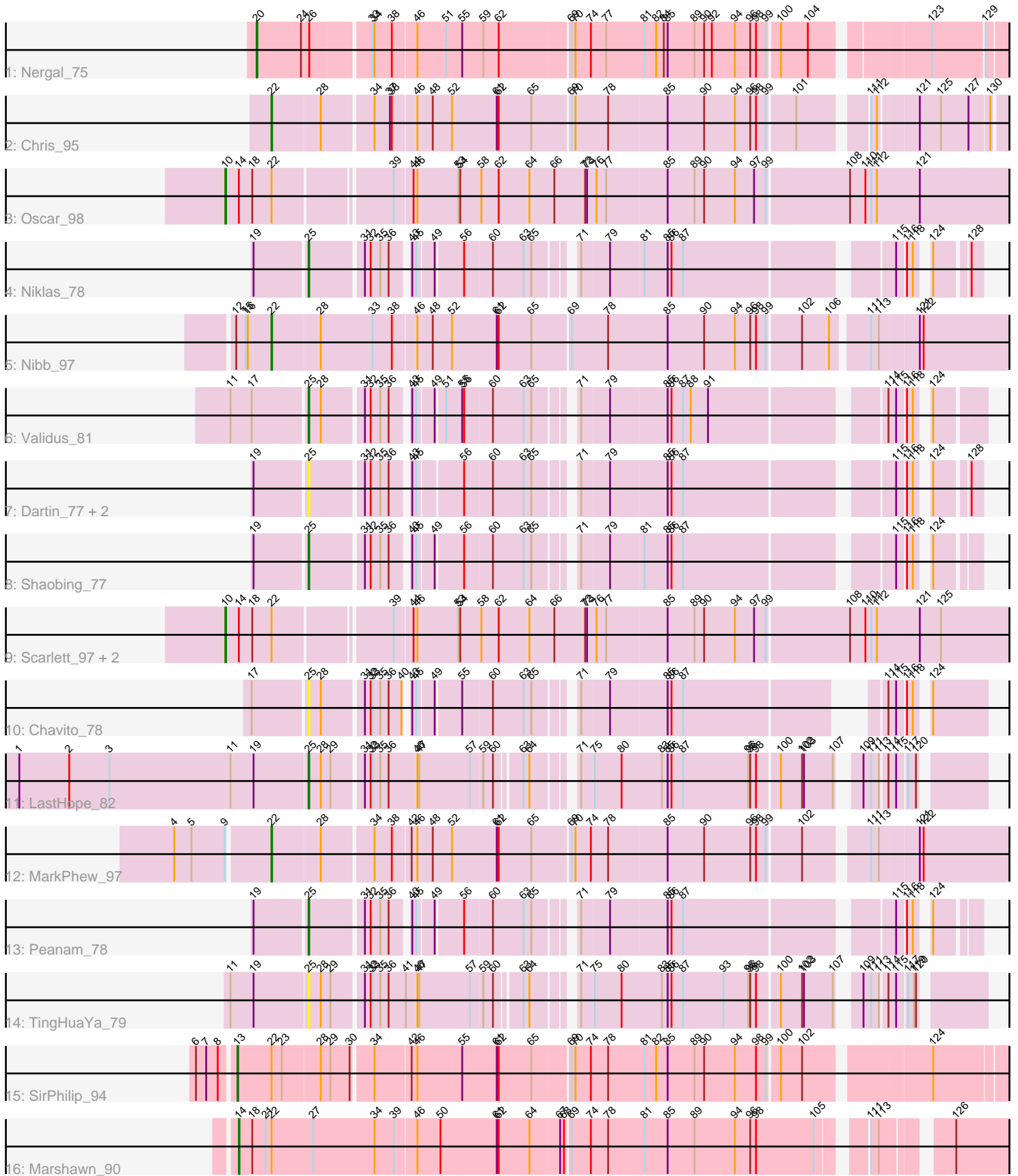


Pham 295104



Note: Tracks are now grouped by subcluster and scaled. Switching in subcluster is indicated by changes in track color. Track scale is now set by default to display the region 30 bp upstream of start 1 to 30 bp downstream of the last possible start. If this default region is judged to be packed too tightly with annotated starts, the track will be further scaled to only show that region of the ORF with annotated starts. This action will be indicated by adding "Zoomed" to the title. For starts, yellow indicates the location of called starts comprised solely of Glimmer/GeneMark auto-annotations, green indicates the location of called starts with at least 1 manual gene annotation.

Pham 295104 Report

This analysis was run 04/18/26 on database version 643.

Pham number 295104 has 20 members, 5 are drafts.

Phages represented in each track:

- Track 1 : Nergal_75
- Track 2 : Chris_95
- Track 3 : Oscar_98
- Track 4 : Niklas_78
- Track 5 : Nibb_97
- Track 6 : Validus_81
- Track 7 : Dartin_77, Richo_77, McMater_77
- Track 8 : Shaobing_77
- Track 9 : Scarlett_97, LeMond_97, KiSi_98
- Track 10 : Chavito_78
- Track 11 : LastHope_82
- Track 12 : MarkPhew_97
- Track 13 : Peanam_78
- Track 14 : TingHuaYa_79
- Track 15 : SirPhilip_94
- Track 16 : Marshawn_90

Summary of Final Annotations (See graph section above for start numbers):

The start number called the most often in the published annotations is 25, it was called in 5 of the 15 non-draft genes in the pham.

Genes that call this "Most Annotated" start:

- Chavito_78, Dartin_77, LastHope_82, McMater_77, Niklas_78, Peanam_78, Richo_77, Shaobing_77, TingHuaYa_79, Validus_81,

Genes that have the "Most Annotated" start but do not call it:

-

Genes that do not have the "Most Annotated" start:

- Chris_95, KiSi_98, LeMond_97, MarkPhew_97, Marshawn_90, Nergal_75, Nibb_97, Oscar_98, Scarlett_97, SirPhilip_94,

Summary by start number:

Start 10:

- Found in 4 of 20 (20.0%) of genes in pham
- Manual Annotations of this start: 4 of 15
- Called 100.0% of time when present
- Phage (with cluster) where this start called: KiSi_98 (K1), LeMond_97 (K1), Oscar_98 (K1), Scarlett_97 (K1),

Start 13:

- Found in 1 of 20 (5.0%) of genes in pham
- Manual Annotations of this start: 1 of 15
- Called 100.0% of time when present
- Phage (with cluster) where this start called: SirPhilip_94 (K6),

Start 14:

- Found in 5 of 20 (25.0%) of genes in pham
- Manual Annotations of this start: 1 of 15
- Called 20.0% of time when present
- Phage (with cluster) where this start called: Marshawn_90 (K6),

Start 20:

- Found in 1 of 20 (5.0%) of genes in pham
- Manual Annotations of this start: 1 of 15
- Called 100.0% of time when present
- Phage (with cluster) where this start called: Nergal_75 (AG),

Start 22:

- Found in 9 of 20 (45.0%) of genes in pham
- Manual Annotations of this start: 3 of 15
- Called 33.3% of time when present
- Phage (with cluster) where this start called: Chris_95 (K1), MarkPhew_97 (K1), Nibb_97 (K1),

Start 25:

- Found in 10 of 20 (50.0%) of genes in pham
- Manual Annotations of this start: 5 of 15
- Called 100.0% of time when present
- Phage (with cluster) where this start called: Chavito_78 (K1), Dartin_77 (K1), LastHope_82 (K1), McMater_77 (K1), Niklas_78 (K1), Peanam_78 (K1), Richo_77 (K1), Shaobing_77 (K1), TingHuaYa_79 (K1), Validus_81 (K1),

Summary by clusters:

There are 3 clusters represented in this pham: K1, K6, AG,

Info for manual annotations of cluster AG:

- Start number 20 was manually annotated 1 time for cluster AG.

Info for manual annotations of cluster K1:

- Start number 10 was manually annotated 4 times for cluster K1.
- Start number 22 was manually annotated 3 times for cluster K1.
- Start number 25 was manually annotated 5 times for cluster K1.

Info for manual annotations of cluster K6:

- Start number 13 was manually annotated 1 time for cluster K6.
- Start number 14 was manually annotated 1 time for cluster K6.

Gene Information:

Gene: Chavito_78 Start: 51311, Stop: 52174, Start Num: 25

Candidate Starts for Chavito_78:

(17, 51233), (Start: 25 @51311 has 5 MA's), (28, 51329), (31, 51386), (32, 51395), (33, 51398), (35, 51410), (36, 51422), (40, 51440), (43, 51443), (45, 51449), (49, 51473), (55, 51509), (60, 51551), (63, 51599), (65, 51611), (71, 51659), (79, 51701), (85, 51788), (86, 51794), (87, 51812), (114, 52049), (115, 52061), (116, 52073), (118, 52082), (124, 52094),

Gene: Chris_95 Start: 58806, Stop: 59939, Start Num: 22

Candidate Starts for Chris_95:

(Start: 22 @58806 has 3 MA's), (28, 58878), (34, 58947), (37, 58971), (38, 58974), (46, 59010), (48, 59034), (52, 59064), (61, 59133), (62, 59136), (65, 59187), (69, 59241), (70, 59247), (78, 59298), (85, 59388), (90, 59445), (94, 59493), (96, 59517), (98, 59526), (99, 59541), (101, 59577), (111, 59667), (112, 59676), (121, 59730), (125, 59763), (127, 59805), (130, 59835),

Gene: Dartin_77 Start: 50562, Stop: 51440, Start Num: 25

Candidate Starts for Dartin_77:

(19, 50487), (Start: 25 @50562 has 5 MA's), (31, 50637), (32, 50646), (35, 50661), (36, 50673), (43, 50694), (45, 50700), (56, 50763), (60, 50802), (63, 50850), (65, 50862), (71, 50910), (79, 50952), (85, 51039), (86, 51045), (87, 51063), (115, 51345), (116, 51357), (118, 51366), (124, 51378), (128, 51423),

Gene: KiSi_98 Start: 59172, Stop: 60431, Start Num: 10

Candidate Starts for KiSi_98:

(Start: 10 @59172 has 4 MA's), (Start: 14 @59193 has 1 MA's), (18, 59214), (Start: 22 @59244 has 3 MA's), (39, 59409), (44, 59436), (46, 59442), (53, 59505), (54, 59508), (58, 59541), (62, 59568), (64, 59616), (66, 59655), (72, 59703), (73, 59706), (76, 59721), (77, 59736), (85, 59829), (89, 59871), (90, 59886), (94, 59934), (97, 59964), (99, 59982), (108, 60102), (110, 60126), (111, 60135), (112, 60144), (121, 60210), (125, 60243),

Gene: LastHope_82 Start: 50083, Stop: 51000, Start Num: 25

Candidate Starts for LastHope_82:

(1, 49636), (2, 49714), (3, 49777), (11, 49966), (19, 50002), (Start: 25 @50083 has 5 MA's), (28, 50101), (29, 50116), (31, 50158), (32, 50167), (33, 50170), (35, 50182), (36, 50194), (46, 50239), (47, 50242), (57, 50320), (59, 50338), (60, 50350), (63, 50386), (64, 50395), (71, 50446), (75, 50464), (80, 50506), (83, 50569), (85, 50578), (86, 50584), (87, 50602), (95, 50701), (96, 50704), (98, 50713), (100, 50743), (102, 50773), (103, 50776), (107, 50821), (109, 50842), (111, 50854), (113, 50866), (114, 50875), (115, 50887), (117, 50899), (120, 50911),

Gene: LeMond_97 Start: 59129, Stop: 60388, Start Num: 10

Candidate Starts for LeMond_97:

(Start: 10 @59129 has 4 MA's), (Start: 14 @59150 has 1 MA's), (18, 59171), (Start: 22 @59201 has 3 MA's), (39, 59366), (44, 59393), (46, 59399), (53, 59462), (54, 59465), (58, 59498), (62, 59525), (64, 59573), (66, 59612), (72, 59660), (73, 59663), (76, 59678), (77, 59693), (85, 59786), (89, 59828), (90, 59843), (94, 59891), (97, 59921), (99, 59939), (108, 60059), (110, 60083), (111, 60092), (112, 60101), (121, 60167), (125, 60200),

Gene: MarkPhew_97 Start: 58854, Stop: 60011, Start Num: 22

Candidate Starts for MarkPhew_97:

(4, 58713), (5, 58740), (9, 58791), (Start: 22 @58854 has 3 MA's), (28, 58926), (34, 58995), (38, 59022), (42, 59049), (46, 59058), (48, 59082), (52, 59112), (61, 59181), (62, 59184), (65, 59235), (69, 59289), (70, 59295), (74, 59319), (78, 59346), (85, 59436), (90, 59493), (96, 59565), (98, 59574), (99, 59589), (102, 59634), (111, 59721), (113, 59733), (121, 59790), (122, 59796),

Gene: Marshawn_90 Start: 58111, Stop: 59241, Start Num: 14

Candidate Starts for Marshawn_90:

(Start: 14 @58111 has 1 MA's), (18, 58132), (21, 58153), (Start: 22 @58162 has 3 MA's), (27, 58225), (34, 58321), (39, 58351), (46, 58384), (50, 58420), (61, 58507), (62, 58510), (64, 58558), (67, 58603), (68, 58609), (69, 58615), (74, 58645), (78, 58672), (81, 58729), (85, 58765), (89, 58807), (94, 58870), (96, 58894), (98, 58903), (105, 58993), (111, 59047), (113, 59059), (126, 59143),

Gene: McMater_77 Start: 50562, Stop: 51440, Start Num: 25

Candidate Starts for McMater_77:

(19, 50487), (Start: 25 @50562 has 5 MA's), (31, 50637), (32, 50646), (35, 50661), (36, 50673), (43, 50694), (45, 50700), (56, 50763), (60, 50802), (63, 50850), (65, 50862), (71, 50910), (79, 50952), (85, 51039), (86, 51045), (87, 51063), (115, 51345), (116, 51357), (118, 51366), (124, 51378), (128, 51423),

Gene: Nergal_75 Start: 50377, Stop: 51474, Start Num: 20

Candidate Starts for Nergal_75:

(Start: 20 @50377 has 1 MA's), (24, 50446), (26, 50455), (33, 50539), (34, 50542), (38, 50566), (46, 50602), (51, 50647), (55, 50671), (59, 50704), (62, 50728), (69, 50833), (70, 50839), (74, 50863), (77, 50887), (81, 50947), (82, 50965), (84, 50977), (85, 50983), (89, 51025), (90, 51040), (92, 51052), (94, 51088), (96, 51112), (98, 51121), (99, 51136), (100, 51151), (104, 51190), (123, 51343), (129, 51418),

Gene: Nibb_97 Start: 58597, Stop: 59775, Start Num: 22

Candidate Starts for Nibb_97:

(12, 58543), (15, 58558), (16, 58561), (Start: 22 @58597 has 3 MA's), (28, 58669), (33, 58747), (38, 58777), (46, 58813), (48, 58837), (52, 58867), (61, 58936), (62, 58939), (65, 58990), (69, 59044), (78, 59101), (85, 59194), (90, 59251), (94, 59299), (96, 59323), (98, 59332), (99, 59347), (102, 59392), (106, 59434), (111, 59485), (113, 59497), (121, 59554), (122, 59560),

Gene: Niklas_78 Start: 50623, Stop: 51501, Start Num: 25

Candidate Starts for Niklas_78:

(19, 50548), (Start: 25 @50623 has 5 MA's), (31, 50698), (32, 50707), (35, 50722), (36, 50734), (43, 50755), (45, 50761), (49, 50785), (56, 50824), (60, 50863), (63, 50911), (65, 50923), (71, 50971), (79, 51013), (81, 51064), (85, 51100), (86, 51106), (87, 51124), (115, 51406), (116, 51418), (118, 51427), (124, 51439), (128, 51484),

Gene: Oscar_98 Start: 59051, Stop: 60310, Start Num: 10

Candidate Starts for Oscar_98:

(Start: 10 @59051 has 4 MA's), (Start: 14 @59072 has 1 MA's), (18, 59093), (Start: 22 @59123 has 3 MA's), (39, 59288), (44, 59315), (46, 59321), (53, 59384), (54, 59387), (58, 59420), (62, 59447), (64, 59495), (66, 59534), (72, 59582), (73, 59585), (76, 59600), (77, 59615), (85, 59708), (89, 59750), (90, 59765), (94, 59813), (97, 59843), (99, 59861), (108, 59981), (110, 60005), (111, 60014), (112, 60023), (121, 60089),

Gene: Peanam_78 Start: 50581, Stop: 51459, Start Num: 25

Candidate Starts for Peanam_78:

(19, 50506), (Start: 25 @50581 has 5 MA's), (31, 50656), (32, 50665), (35, 50680), (36, 50692), (43, 50713), (45, 50719), (49, 50743), (56, 50782), (60, 50821), (63, 50869), (65, 50881), (71, 50929), (79, 50971), (85, 51058), (86, 51064), (87, 51082), (115, 51364), (116, 51376), (118, 51385), (124, 51397),

Gene: Richo_77 Start: 50562, Stop: 51440, Start Num: 25

Candidate Starts for Richo_77:

(19, 50487), (Start: 25 @50562 has 5 MA's), (31, 50637), (32, 50646), (35, 50661), (36, 50673), (43, 50694), (45, 50700), (56, 50763), (60, 50802), (63, 50850), (65, 50862), (71, 50910), (79, 50952), (85, 51039), (86, 51045), (87, 51063), (115, 51345), (116, 51357), (118, 51366), (124, 51378), (128, 51423),

Gene: Scarlett_97 Start: 58920, Stop: 60179, Start Num: 10

Candidate Starts for Scarlett_97:

(Start: 10 @58920 has 4 MA's), (Start: 14 @58941 has 1 MA's), (18, 58962), (Start: 22 @58992 has 3 MA's), (39, 59157), (44, 59184), (46, 59190), (53, 59253), (54, 59256), (58, 59289), (62, 59316), (64, 59364), (66, 59403), (72, 59451), (73, 59454), (76, 59469), (77, 59484), (85, 59577), (89, 59619), (90, 59634), (94, 59682), (97, 59712), (99, 59730), (108, 59850), (110, 59874), (111, 59883), (112, 59892), (121, 59958), (125, 59991),

Gene: Shaobing_77 Start: 50598, Stop: 51476, Start Num: 25

Candidate Starts for Shaobing_77:

(19, 50523), (Start: 25 @50598 has 5 MA's), (31, 50673), (32, 50682), (35, 50697), (36, 50709), (43, 50730), (45, 50736), (49, 50760), (56, 50799), (60, 50838), (63, 50886), (65, 50898), (71, 50946), (79, 50988), (81, 51039), (85, 51075), (86, 51081), (87, 51099), (115, 51381), (116, 51393), (118, 51402), (124, 51414),

Gene: SirPhilip_94 Start: 58988, Stop: 60181, Start Num: 13

Candidate Starts for SirPhilip_94:

(6, 58934), (7, 58949), (8, 58967), (Start: 13 @58988 has 1 MA's), (Start: 22 @59039 has 3 MA's), (23, 59054), (28, 59111), (29, 59123), (30, 59150), (34, 59180), (42, 59234), (46, 59243), (55, 59312), (61, 59366), (62, 59369), (65, 59420), (69, 59474), (70, 59480), (74, 59504), (78, 59531), (81, 59588), (82, 59606), (85, 59624), (89, 59666), (90, 59681), (94, 59729), (98, 59762), (99, 59777), (100, 59792), (102, 59822), (124, 59993),

Gene: TingHuaYa_79 Start: 50154, Stop: 51071, Start Num: 25

Candidate Starts for TingHuaYa_79:

(11, 50037), (19, 50073), (Start: 25 @50154 has 5 MA's), (28, 50172), (29, 50187), (31, 50229), (32, 50238), (33, 50241), (35, 50253), (36, 50265), (41, 50292), (46, 50310), (47, 50313), (57, 50391), (59, 50409), (60, 50421), (63, 50457), (64, 50466), (71, 50517), (75, 50535), (80, 50577), (83, 50640), (85, 50649), (86, 50655), (87, 50673), (93, 50733), (95, 50772), (96, 50775), (98, 50784), (100, 50814), (102, 50844), (103, 50847), (107, 50892), (109, 50913), (111, 50925), (113, 50937), (114, 50946), (115, 50958), (117, 50970), (119, 50979), (120, 50982),

Gene: Validus_81 Start: 51145, Stop: 52035, Start Num: 25

Candidate Starts for Validus_81:

(11, 51034), (17, 51067), (Start: 25 @51145 has 5 MA's), (28, 51163), (31, 51220), (32, 51229), (35, 51244), (36, 51256), (43, 51277), (45, 51283), (49, 51307), (51, 51319), (55, 51343), (56, 51346), (60, 51385), (63, 51433), (65, 51445), (71, 51493), (79, 51535), (85, 51622), (86, 51628), (87, 51646), (88, 51658), (91, 51682), (114, 51919), (115, 51931), (116, 51943), (118, 51952), (124, 51964),