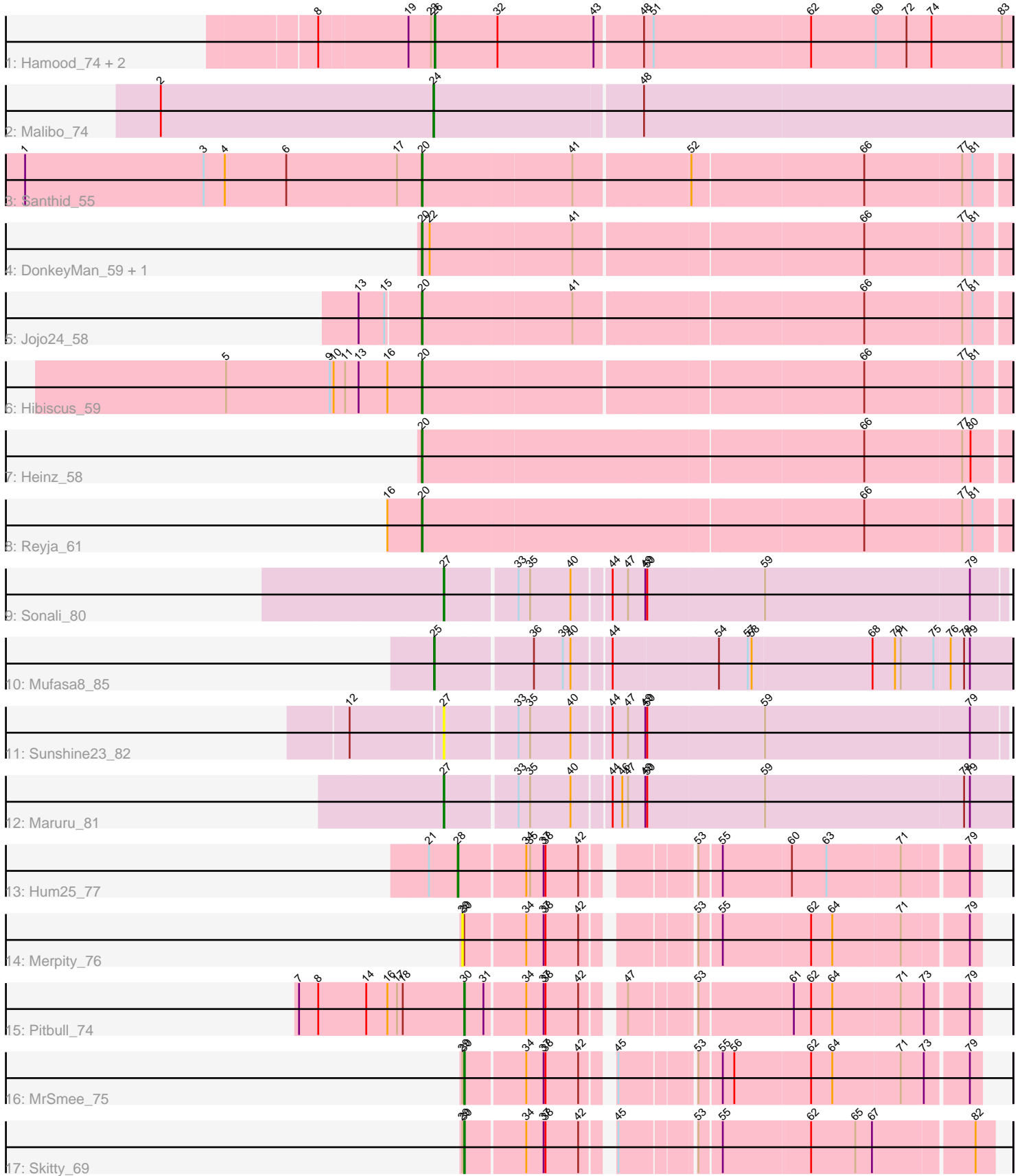


# Pham 295106



Note: Tracks are now grouped by subcluster and scaled. Switching in subcluster is indicated by changes in track color. Track scale is now set by default to display the region 30 bp upstream of start 1 to 30 bp downstream of the last possible start. If this default region is judged to be packed too tightly with annotated starts, the track will be further scaled to only show that region of the ORF with annotated starts. This action will be indicated by adding "Zoomed" to the title. For starts, yellow indicates the location of called starts comprised solely of Glimmer/GeneMark auto-annotations, green indicates the location of called starts with at least 1 manual gene annotation.

## Pham 295106 Report

This analysis was run 04/18/26 on database version 643.

Pham number 295106 has 20 members, 2 are drafts.

Phages represented in each track:

- Track 1 : Hamood\_74, Chop\_74, GrandSlam\_74
- Track 2 : Malibo\_74
- Track 3 : Santhid\_55
- Track 4 : DonkeyMan\_59, Tarzan\_59
- Track 5 : Jojo24\_58
- Track 6 : Hibiscus\_59
- Track 7 : Heinz\_58
- Track 8 : Reyja\_61
- Track 9 : Sonali\_80
- Track 10 : Mufasa8\_85
- Track 11 : Sunshine23\_82
- Track 12 : Maruru\_81
- Track 13 : Hum25\_77
- Track 14 : Merpity\_76
- Track 15 : Pitbull\_74
- Track 16 : MrSmee\_75
- Track 17 : Skitty\_69

### ***Summary of Final Annotations (See graph section above for start numbers):***

The start number called the most often in the published annotations is 20, it was called in 7 of the 18 non-draft genes in the pham.

Genes that call this "Most Annotated" start:

- DonkeyMan\_59, Heinz\_58, Hibiscus\_59, Jojo24\_58, Reyja\_61, Santhid\_55, Tarzan\_59,

Genes that have the "Most Annotated" start but do not call it:

- 

Genes that do not have the "Most Annotated" start:

- Chop\_74, GrandSlam\_74, Hamood\_74, Hum25\_77, Malibo\_74, Maruru\_81, Merpity\_76, MrSmee\_75, Mufasa8\_85, Pitbull\_74, Skitty\_69, Sonali\_80, Sunshine23\_82,

## Summary by start number:

### Start 20:

- Found in 7 of 20 ( 35.0% ) of genes in pham
- Manual Annotations of this start: 7 of 18
- Called 100.0% of time when present
- Phage (with cluster) where this start called: DonkeyMan\_59 (DY), Heinz\_58 (DY), Hibiscus\_59 (DY), Jojo24\_58 (DY), Reyja\_61 (DY), Santhid\_55 (DY), Tarzan\_59 (DY),

### Start 24:

- Found in 1 of 20 ( 5.0% ) of genes in pham
- Manual Annotations of this start: 1 of 18
- Called 100.0% of time when present
- Phage (with cluster) where this start called: Malibo\_74 (DW),

### Start 25:

- Found in 1 of 20 ( 5.0% ) of genes in pham
- Manual Annotations of this start: 1 of 18
- Called 100.0% of time when present
- Phage (with cluster) where this start called: Mufasa8\_85 (FG),

### Start 26:

- Found in 3 of 20 ( 15.0% ) of genes in pham
- Manual Annotations of this start: 3 of 18
- Called 100.0% of time when present
- Phage (with cluster) where this start called: Chop\_74 (DI), GrandSlam\_74 (DI), Hamood\_74 (DI),

### Start 27:

- Found in 3 of 20 ( 15.0% ) of genes in pham
- Manual Annotations of this start: 2 of 18
- Called 100.0% of time when present
- Phage (with cluster) where this start called: Maruru\_81 (FG), Sonali\_80 (FG), Sunshine23\_82 (FG),

### Start 28:

- Found in 1 of 20 ( 5.0% ) of genes in pham
- Manual Annotations of this start: 1 of 18
- Called 100.0% of time when present
- Phage (with cluster) where this start called: Hum25\_77 (FQ),

### Start 29:

- Found in 3 of 20 ( 15.0% ) of genes in pham
- No Manual Annotations of this start.
- Called 33.3% of time when present
- Phage (with cluster) where this start called: Merpity\_76 (FQ),

### Start 30:

- Found in 4 of 20 ( 20.0% ) of genes in pham
- Manual Annotations of this start: 3 of 18
- Called 75.0% of time when present

- Phage (with cluster) where this start called: MrSmee\_75 (FQ), Pitbull\_74 (FQ), Skitty\_69 (FQ),

### **Summary by clusters:**

There are 5 clusters represented in this pham: DW, FQ, DY, DI, FG,

Info for manual annotations of cluster DI:

- Start number 26 was manually annotated 3 times for cluster DI.

Info for manual annotations of cluster DW:

- Start number 24 was manually annotated 1 time for cluster DW.

Info for manual annotations of cluster DY:

- Start number 20 was manually annotated 7 times for cluster DY.

Info for manual annotations of cluster FG:

- Start number 25 was manually annotated 1 time for cluster FG.
- Start number 27 was manually annotated 2 times for cluster FG.

Info for manual annotations of cluster FQ:

- Start number 28 was manually annotated 1 time for cluster FQ.
- Start number 30 was manually annotated 3 times for cluster FQ.

### **Gene Information:**

Gene: Chop\_74 Start: 49201, Stop: 50076, Start Num: 26

Candidate Starts for Chop\_74:

(8, 49030), (19, 49162), (23, 49195), (Start: 26 @49201 has 3 MA's), (32, 49294), (43, 49441), (48, 49510), (51, 49525), (62, 49765), (69, 49864), (72, 49912), (74, 49951), (83, 50059),

Gene: DonkeyMan\_59 Start: 38622, Stop: 39494, Start Num: 20

Candidate Starts for DonkeyMan\_59:

(Start: 20 @38622 has 7 MA's), (22, 38634), (41, 38847), (66, 39276), (77, 39426), (81, 39441),

Gene: GrandSlam\_74 Start: 49201, Stop: 50076, Start Num: 26

Candidate Starts for GrandSlam\_74:

(8, 49030), (19, 49162), (23, 49195), (Start: 26 @49201 has 3 MA's), (32, 49294), (43, 49441), (48, 49510), (51, 49525), (62, 49765), (69, 49864), (72, 49912), (74, 49951), (83, 50059),

Gene: Hamood\_74 Start: 49201, Stop: 50076, Start Num: 26

Candidate Starts for Hamood\_74:

(8, 49030), (19, 49162), (23, 49195), (Start: 26 @49201 has 3 MA's), (32, 49294), (43, 49441), (48, 49510), (51, 49525), (62, 49765), (69, 49864), (72, 49912), (74, 49951), (83, 50059),

Gene: Heinz\_58 Start: 37588, Stop: 38469, Start Num: 20

Candidate Starts for Heinz\_58:

(Start: 20 @37588 has 7 MA's), (66, 38251), (77, 38401), (80, 38413),

Gene: Hibiscus\_59 Start: 37479, Stop: 38351, Start Num: 20

Candidate Starts for Hibiscus\_59:

(5, 37173), (9, 37335), (10, 37341), (11, 37359), (13, 37380), (16, 37425), (Start: 20 @37479 has 7 MA's), (66, 38133), (77, 38283), (81, 38298),

Gene: Hum25\_77 Start: 39455, Stop: 40183, Start Num: 28

Candidate Starts for Hum25\_77:

(21, 39410), (Start: 28 @39455 has 1 MA's), (34, 39554), (35, 39560), (37, 39581), (38, 39584), (42, 39635), (53, 39773), (55, 39803), (60, 39905), (63, 39959), (71, 40070), (79, 40166),

Gene: Jojo24\_58 Start: 37912, Stop: 38784, Start Num: 20

Candidate Starts for Jojo24\_58:

(13, 37819), (15, 37858), (Start: 20 @37912 has 7 MA's), (41, 38137), (66, 38566), (77, 38716), (81, 38731),

Gene: Malibo\_74 Start: 48036, Stop: 48914, Start Num: 24

Candidate Starts for Malibo\_74:

(2, 47619), (Start: 24 @48036 has 1 MA's), (48, 48348),

Gene: Maruru\_81 Start: 50216, Stop: 51058, Start Num: 27

Candidate Starts for Maruru\_81:

(Start: 27 @50216 has 2 MA's), (33, 50321), (35, 50339), (40, 50402), (44, 50456), (46, 50471), (47, 50480), (49, 50507), (50, 50510), (59, 50684), (78, 50987), (79, 50996),

Gene: Merpity\_76 Start: 39442, Stop: 40167, Start Num: 29

Candidate Starts for Merpity\_76:

(29, 39442), (Start: 30 @39445 has 3 MA's), (34, 39535), (37, 39562), (38, 39565), (42, 39616), (53, 39754), (55, 39784), (62, 39919), (64, 39952), (71, 40054), (79, 40150),

Gene: MrSmee\_75 Start: 39017, Stop: 39739, Start Num: 30

Candidate Starts for MrSmee\_75:

(29, 39014), (Start: 30 @39017 has 3 MA's), (34, 39107), (37, 39134), (38, 39137), (42, 39188), (45, 39221), (53, 39326), (55, 39356), (56, 39374), (62, 39491), (64, 39524), (71, 39626), (73, 39659), (79, 39722),

Gene: Mufasa8\_85 Start: 50444, Stop: 51298, Start Num: 25

Candidate Starts for Mufasa8\_85:

(Start: 25 @50444 has 1 MA's), (36, 50588), (39, 50633), (40, 50642), (44, 50696), (54, 50852), (57, 50897), (58, 50903), (68, 51086), (70, 51119), (71, 51128), (75, 51179), (76, 51203), (78, 51224), (79, 51233),

Gene: Pitbull\_74 Start: 38878, Stop: 39600, Start Num: 30

Candidate Starts for Pitbull\_74:

(7, 38620), (8, 38650), (14, 38725), (16, 38758), (17, 38773), (18, 38782), (Start: 30 @38878 has 3 MA's), (31, 38908), (34, 38968), (37, 38995), (38, 38998), (42, 39049), (47, 39097), (53, 39187), (61, 39325), (62, 39352), (64, 39385), (71, 39487), (73, 39520), (79, 39583),

Gene: Reyja\_61 Start: 39095, Stop: 39976, Start Num: 20

Candidate Starts for Reyja\_61:

(16, 39041), (Start: 20 @39095 has 7 MA's), (66, 39758), (77, 39908), (81, 39923),

Gene: Santhid\_55 Start: 36515, Stop: 37387, Start Num: 20

Candidate Starts for Santhid\_55:

(1, 35897), (3, 36176), (4, 36209), (6, 36305), (17, 36476), (Start: 20 @36515 has 7 MA's), (41, 36740), (52, 36911), (66, 37169), (77, 37319), (81, 37334),

Gene: Skitty\_69 Start: 37268, Stop: 38008, Start Num: 30

Candidate Starts for Skitty\_69:

(29, 37265), (Start: 30 @37268 has 3 MA's), (34, 37358), (37, 37385), (38, 37388), (42, 37439), (45, 37472), (53, 37577), (55, 37607), (62, 37739), (65, 37808), (67, 37832), (82, 37979),

Gene: Sonali\_80 Start: 50220, Stop: 51053, Start Num: 27

Candidate Starts for Sonali\_80:

(Start: 27 @50220 has 2 MA's), (33, 50325), (35, 50343), (40, 50406), (44, 50460), (47, 50484), (49, 50511), (50, 50514), (59, 50688), (79, 51000),

Gene: Sunshine23\_82 Start: 50194, Stop: 51027, Start Num: 27

Candidate Starts for Sunshine23\_82:

(12, 50056), (Start: 27 @50194 has 2 MA's), (33, 50299), (35, 50317), (40, 50380), (44, 50434), (47, 50458), (49, 50485), (50, 50488), (59, 50662), (79, 50974),

Gene: Tarzan\_59 Start: 37877, Stop: 38749, Start Num: 20

Candidate Starts for Tarzan\_59:

(Start: 20 @37877 has 7 MA's), (22, 37889), (41, 38102), (66, 38531), (77, 38681), (81, 38696),